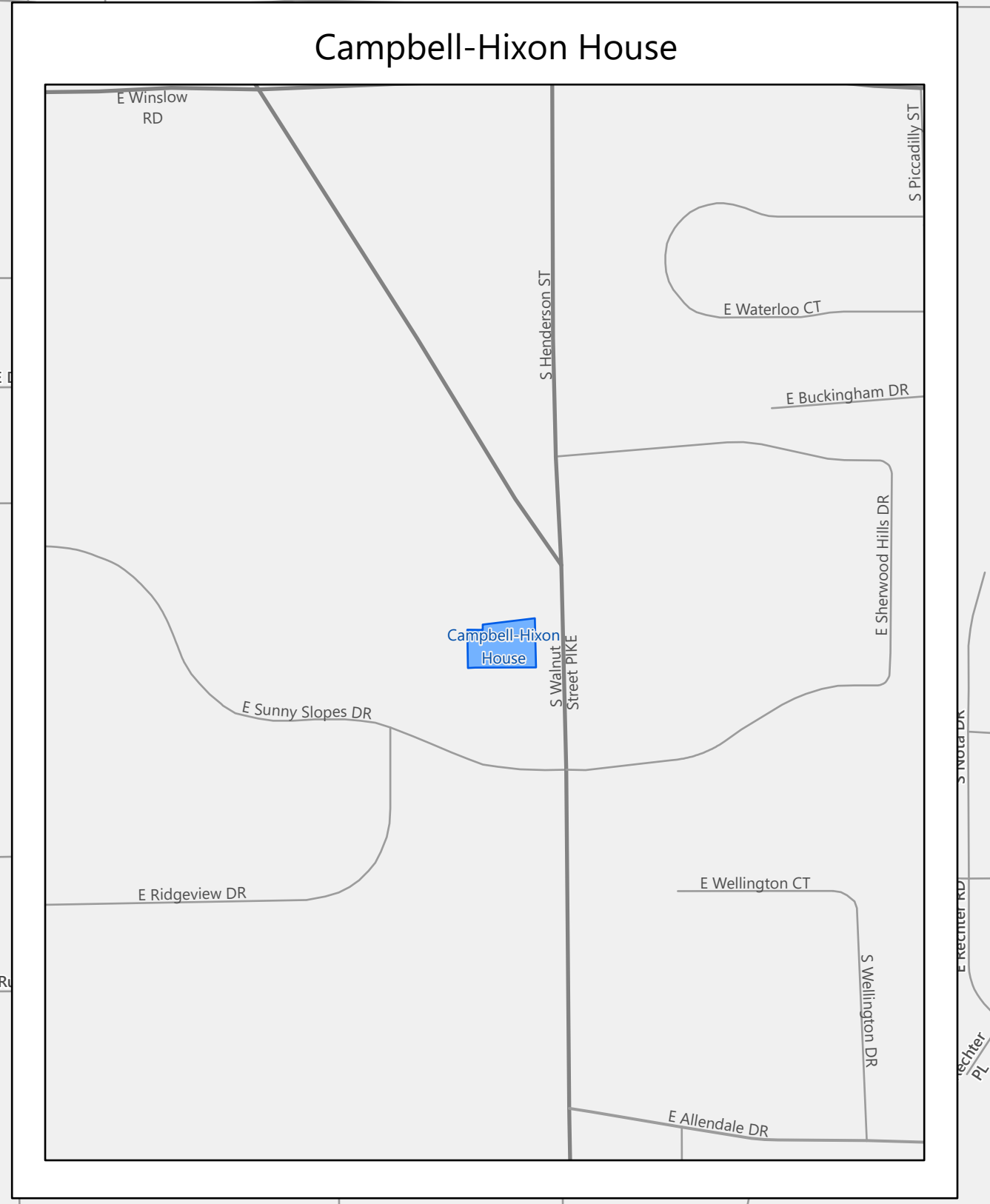
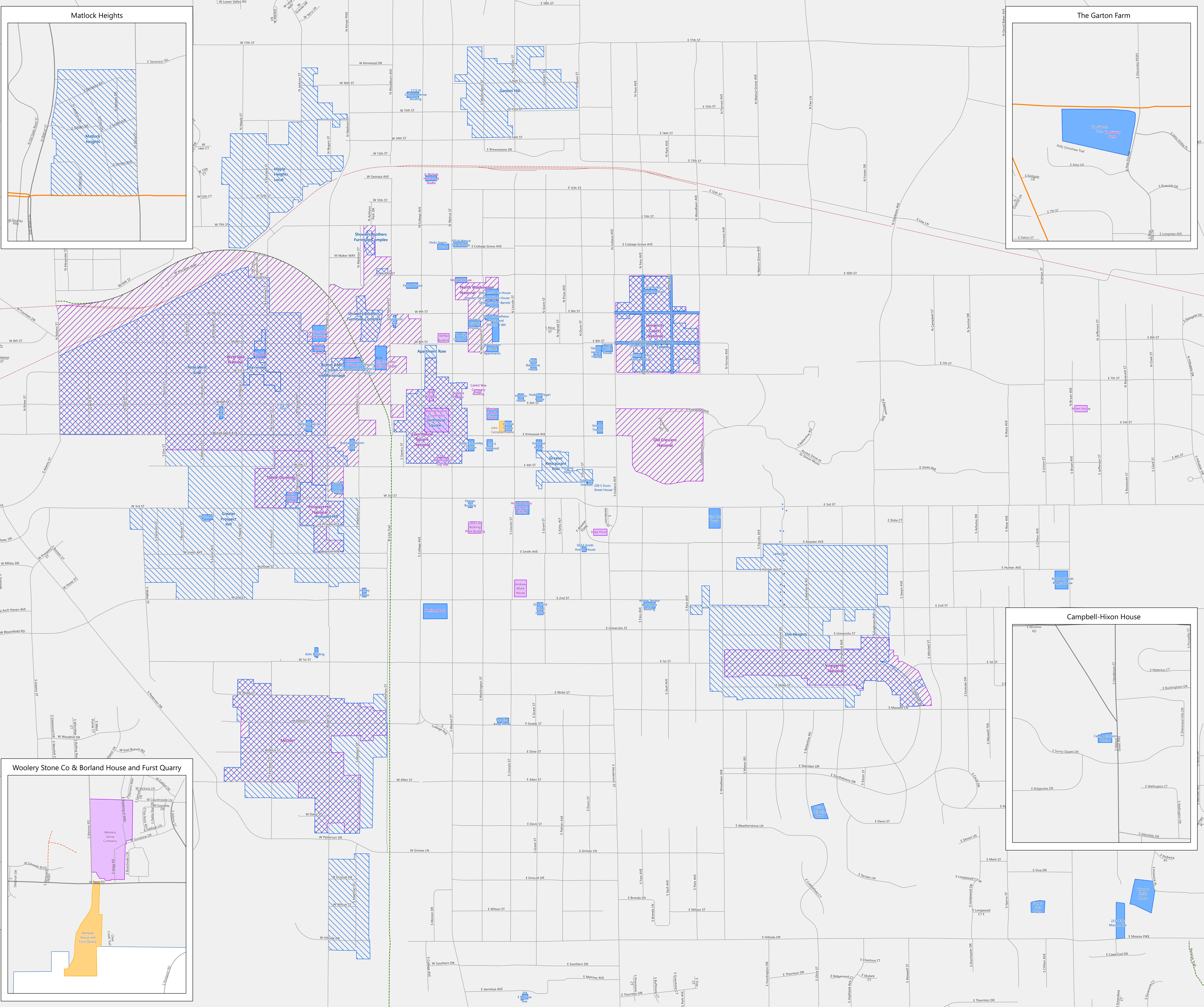
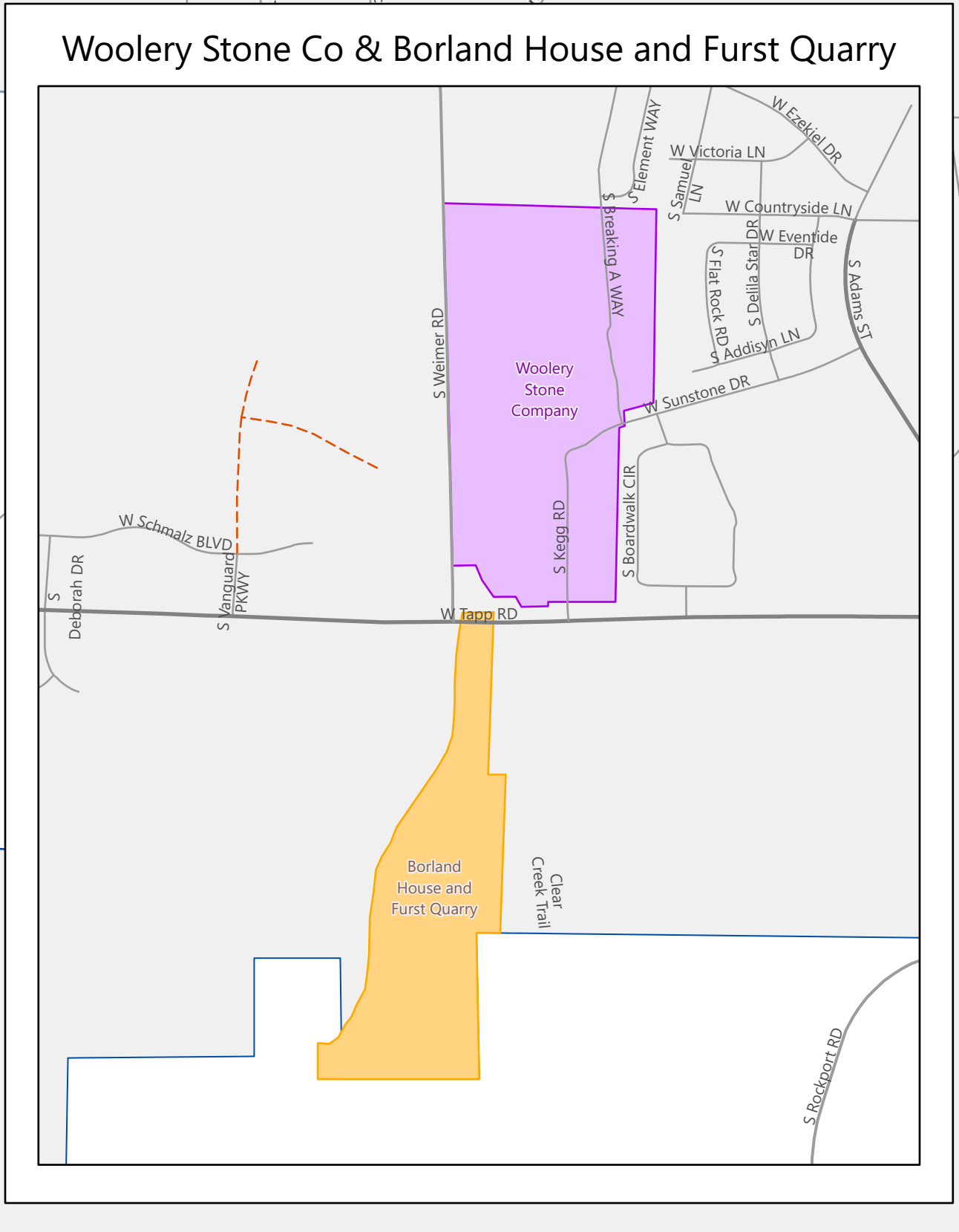
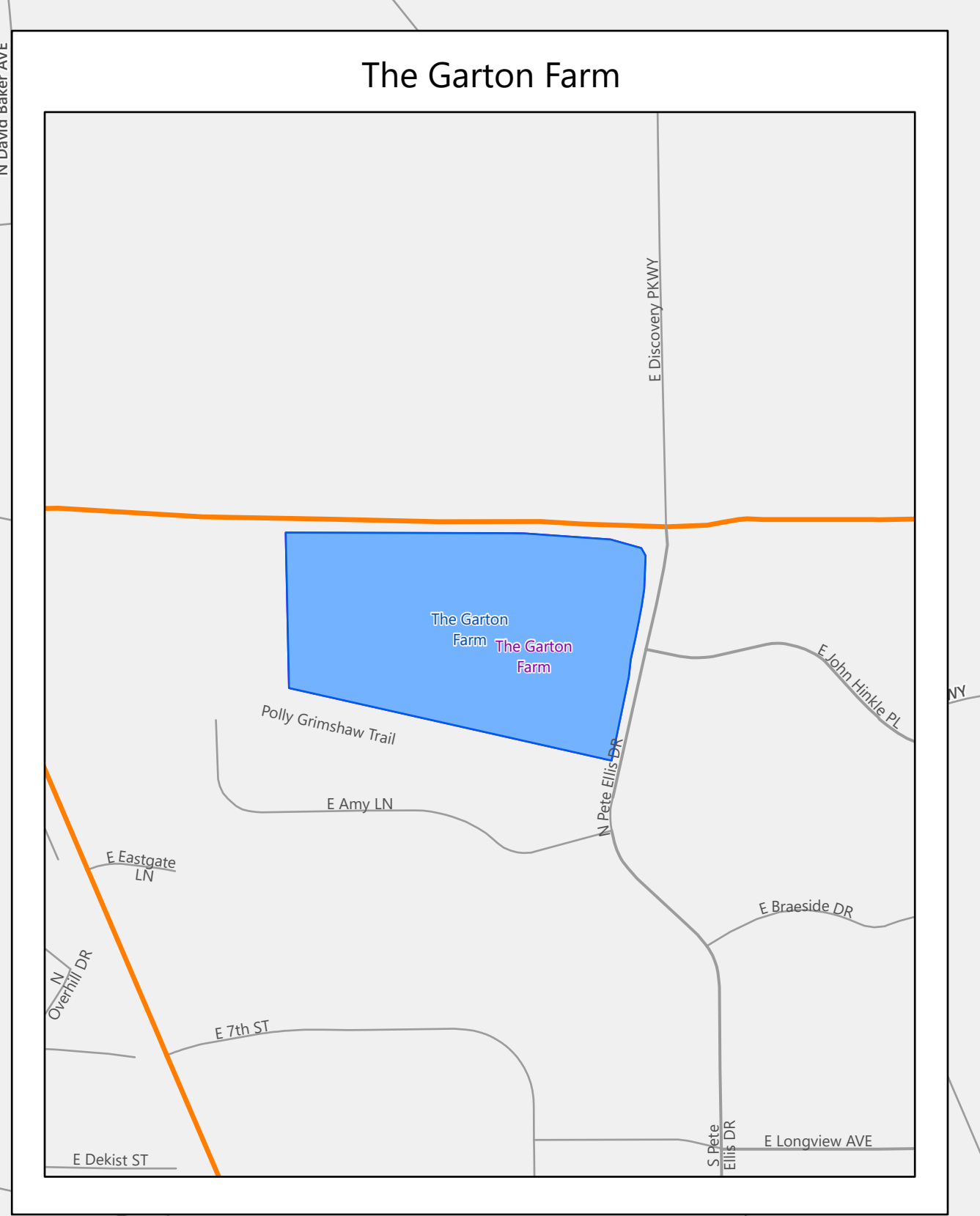


# Bloomington Registered Historic Districts

## Map Legend

-  Local Historic Conservation District
-  Local Historic District
-  Local Historic Sites/Places
-  National Registered Sites/Places
-  National Registered Districts
-  State Historic Sites/Places
-  State Historic Districts
-  Bloomington Municipal Boundary



Produced: 12/6/2022



Layout: AllHistoricResources\_48x36  
 Project: HistoricResourcesMaps

This map was produced by the City of Bloomington GIS, for use by the City and general public, as map information. The planimetric information is based on aerial orthorectified imagery from March 2016. Supplemental updates are made from development drawings, plats, and other sources. The accuracy of information contained in this document is based on National Mapping Standards, however it is NOT warranted. The Corporation boundary reflects annexations effective as of the print date on this map.