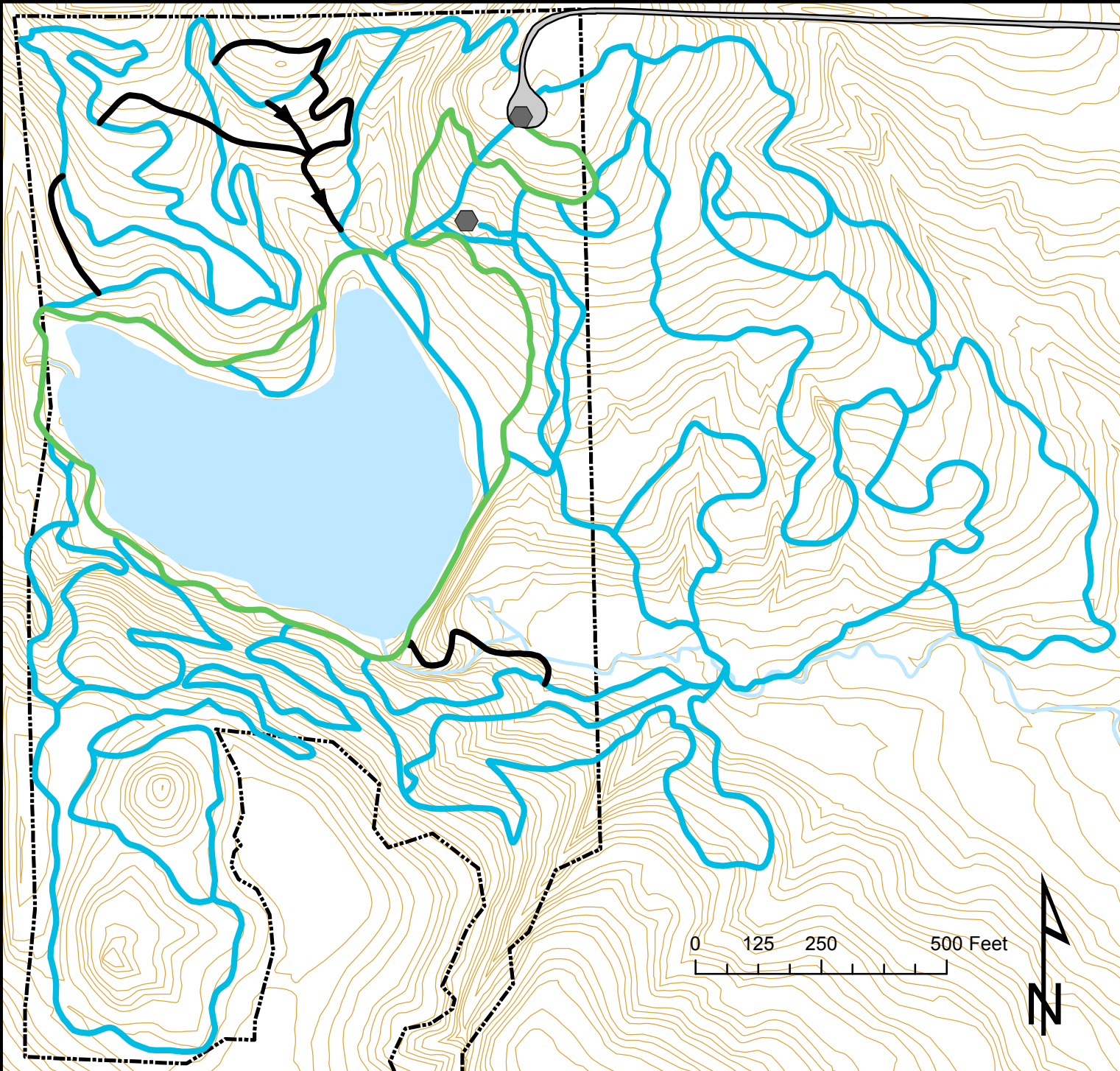


# WAPEHANI MOUNTAIN BIKE PARK



## Trails by Difficulty Rating

— Easy

— Intermediate

— Expert

**Clockwise direction is recommended**

— 2 ft Contour Intervals

— Weimer Lake and streams

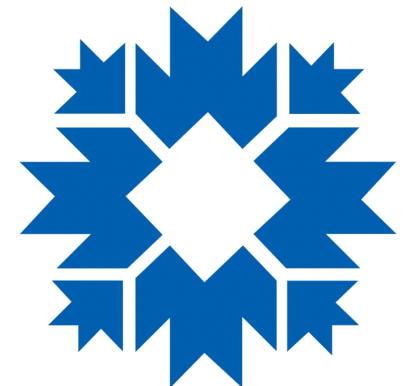
— Wapehani Rd. and Parking Lot

— City of Bloomington Property (2008)

— Picnic Tables and Bike Racks

Projection: NAD 1983 State Plane Indiana West.

Last Date Revised: 05/10/2013



**CITY OF BLOOMINGTON**  
parks and recreation