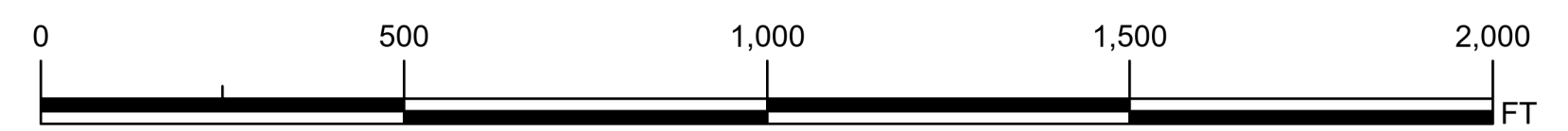


This map was produced by the City of Bloomington GIS, for use by the City and general public as map information. The planimetric information is based on aerial orthorectified flown in March 2016. Supplemental updates are made from development drawings, plats, and other sources. The accuracy of information contained in this document is based on National Mapping Standards, however it is NOT warranted. The Corporation boundary reflects annexations effective as of the print date on this map.

**Map Legend**

- Mixed-Use Downtown Courthouse Square
- Mixed-Use Downtown Downtown Core
- Mixed-Use Downtown Downtown Edges
- Mixed-Use Downtown Downtown Gateway
- Mixed-Use Downtown Showers Technology
- Mixed-Use Downtown University Village
- Other Zoning Boundaries



Produced: 1/5/2022

