

ORDINANCE 94-69

**AN ORDINANCE CONCERNING THE VOLUNTARY ANNEXATION OF
ADJACENT AND CONTIGUOUS TERRITORY
(Funkhouser and Minnick Properties)**

WHEREAS, the real estate described in this ordinance is adjacent to and sufficiently contiguous with boundary of the City of Bloomington to meet the statutory requirements set out in IC 36-4-3-1.5 for annexation by the City; and

WHEREAS, as required by IC 36-4-3-5, the owners of this real estate have petitioned for annexation by the City;

NOW, THEREFORE, BE IT ORDAINED BY THE COMMON COUNCIL OF THE CITY OF BLOOMINGTON, INDIANA:

SECTION 1. That the following described land, commonly known as the Funkhouser and Minnick properties, which are located at 627 and just east of 715 South Anna Lee Lane, be annexed to and declared a part of the City of Bloomington, Indiana, to-wit:

The Funkhouser Property:

A part of Seminary Lot Number 186 in the Northeast Quarter of Section 6, Township 8 North, Range 1 West, Monroe County, Indiana, and being more particularly described as follows:

COMMENCING at the northwest corner of Seminary Lot Number 180; thence EAST 900 feet; thence SOUTH 1384.25 feet to the southwest corner of land of Funkhouser (Deed Record 131, Page 403); thence EAST 150 feet, more or less, along the south line of said land of Funkhouser to the POINT OF BEGINNING; thence continuing EAST 274.00 feet along the said south line of land of Funkhouser to the southeast corner thereof; thence NORTH 308.25 feet along the east line of land of Funkhouser to the northeast corner thereof; thence WEST 424.00 feet along the said north line of land of Funkhouser; thence SOUTH 40.00 feet; thence EAST 150.00 feet; thence SOUTH 268.25 feet to the Point of Beginning, containing 2.08 acres, more or less.

And, the Minnick Property:

A part of Seminary Lot Number 186 in the Northeast Quarter of Section 6, Township 8 North, Range 1 West, Monroe County, Indiana, and being more particularly described as follows:

COMMENCING at the northwest corner of Seminary Lot Number 180; thence EAST 900 feet; thence SOUTH 1384.25 feet to the northwest corner of land of Minnick (Deed Record 93, Page 403); thence EAST 150 feet, more or less, along the north line of said land of Minnick to the POINT OF BEGINNING; thence continuing EAST 274.00 feet along the said north line of land of Minnick to the northeast corner thereof; thence SOUTH 102.75 feet along the east line of land of Minnick to the southeast corner thereof; thence WEST 274.00 feet along the said south line of land of Minnick; thence NORTH 102.75 feet to the Point of Beginning, containing 0.65 acres, more or less.


SECTION 2. Be it further ordained, that the boundaries of the City of Bloomington shall be, and the same are, hereby declared to be extended so as to include all of the real estate hereinabove described as part of the City of Bloomington, Indiana.

SECTION 3. Pursuant to I.C. 36-4-3-3(d), the above described territory, which is hereby annexed to and declared a part of the City of Bloomington, Indiana, shall be assigned to Bloomington Common Council District One.

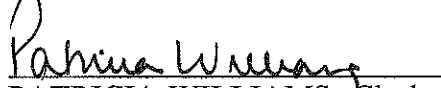
SECTION 4. Pursuant to I.C.36-4-3-7(d) and (e) this ordinance shall take effect the second

January 1 that follows its passage and adoption by the Common Council of the City of Bloomington and approval of the Mayor, and the City herein acknowledges its obligations at the time of the annexation.

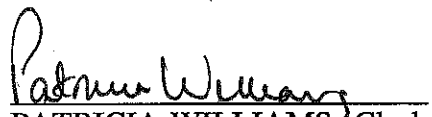
PASSED and ADOPTED by the Common Council of the City of Bloomington, Monroe County, Indiana, upon this 14 day of December, 1994.


JIM SHERMAN, President
Bloomington Common Council


ATTEST:


PATRICIA WILLIAMS, Clerk
City of Bloomington

PRESENTED by me to the Mayor of the City of Bloomington, Monroe County, Indiana, upon this 15 day of December, 1994.


PATRICIA WILLIAMS, Clerk
City of Bloomington

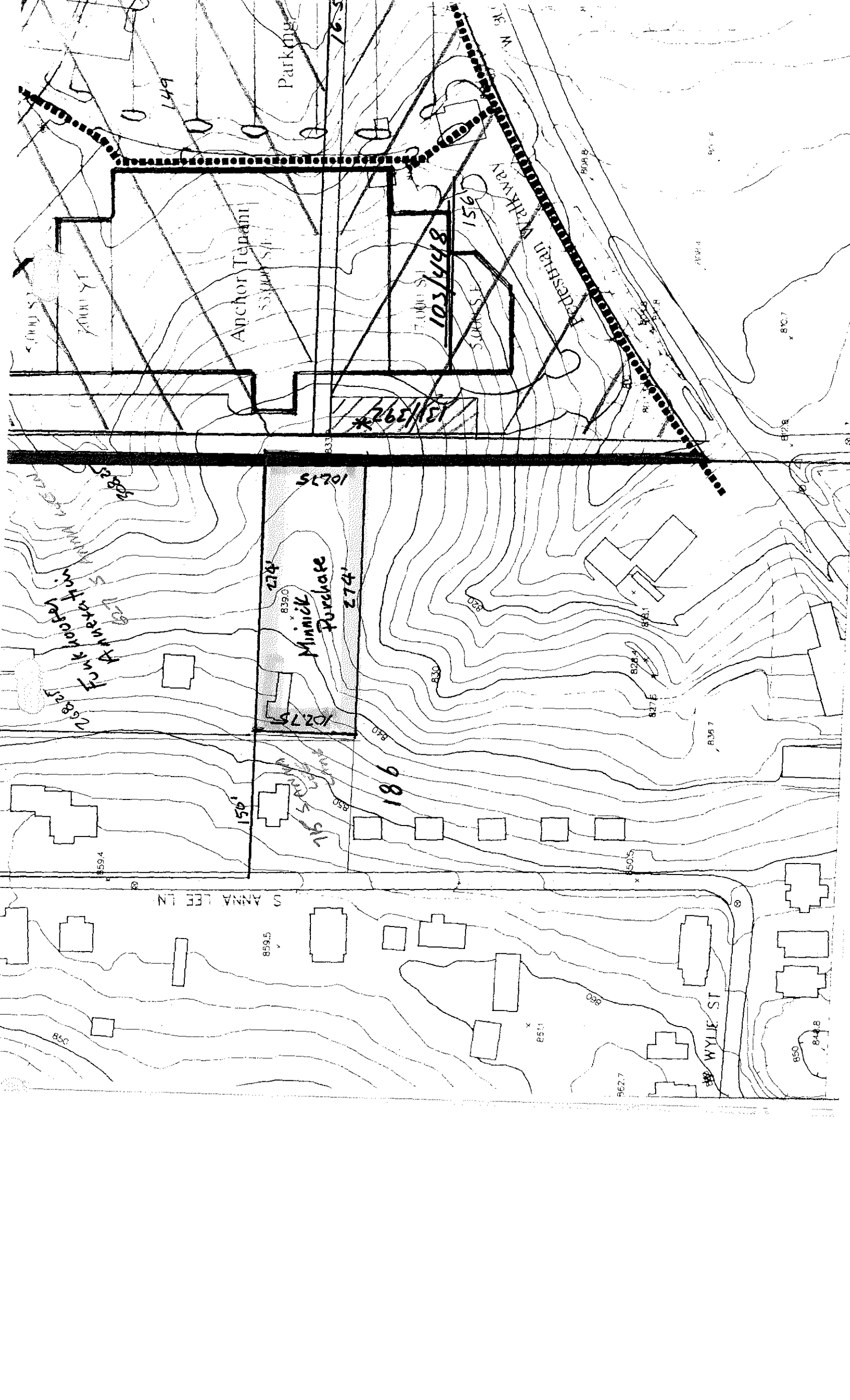
SIGNED and APPROVED by me upon this 15th day of December, 1994.


TOMILEA ALLISON, Mayor
City of Bloomington

SYNOPSIS

This ordinance annexes the Funkhouser and Minnick properties which are located at 627 and just east of 715 South Anna Lee Lane.

Signatures to
HT (Legal)
Fire District



149

Parkway

Anchor Tenant
33000 S.F.

874/501
7,000 S.F.

Pedestrian Pathway

181/297*

10275

Minnick Purchase

274' x 830'

274'

10275

186

U.S. ANNA LEE LN

859.5

WYLLIE ST

850

844.8

850

862.7

851.1

850.5

859.4

836.7

826.4

827.6

841.1

830

840

840

833

820.7

872.8

808.8

808.4

805.6

5,000 S.F.

7,000 S.F.

1551

26825
27825
28825
29825
30825
31825
32825
33825
34825
35825
36825
37825
38825
39825
40825
41825
42825
43825
44825
45825
46825
47825
48825
49825
50825
51825
52825
53825
54825
55825
56825
57825
58825
59825
60825
61825
62825
63825
64825
65825
66825
67825
68825
69825
70825
71825
72825
73825
74825
75825
76825
77825
78825
79825
80825
81825
82825
83825
84825
85825
86825
87825
88825
89825
90825
91825
92825
93825
94825
95825
96825
97825
98825
99825
100825
101825
102825
103825
104825
105825
106825
107825
108825
109825
110825
111825
112825
113825
114825
115825
116825
117825
118825
119825
120825
121825
122825
123825
124825
125825
126825
127825
128825
129825
130825
131825
132825
133825
134825
135825
136825
137825
138825
139825
140825
141825
142825
143825
144825
145825
146825
147825
148825
149825
150825
151825
152825
153825
154825
155825
156825
157825
158825
159825
160825
161825
162825
163825
164825
165825
166825
167825
168825
169825
170825
171825
172825
173825
174825
175825
176825
177825
178825
179825
180825
181825
182825
183825
184825
185825
186825
187825
188825
189825
190825
191825
192825
193825
194825
195825
196825
197825
198825
199825
200825
201825
202825
203825
204825
205825
206825
207825
208825
209825
210825
211825
212825
213825
214825
215825
216825
217825
218825
219825
220825
221825
222825
223825
224825
225825
226825
227825
228825
229825
230825
231825
232825
233825
234825
235825
236825
237825
238825
239825
240825
241825
242825
243825
244825
245825
246825
247825
248825
249825
250825
251825
252825
253825
254825
255825
256825
257825
258825
259825
260825
261825
262825
263825
264825
265825
266825
267825
268825
269825
270825
271825
272825
273825
274825
275825
276825
277825
278825
279825
280825
281825
282825
283825
284825
285825
286825
287825
288825
289825
290825
291825
292825
293825
294825
295825
296825
297825
298825
299825
300825
301825
302825
303825
304825
305825
306825
307825
308825
309825
310825
311825
312825
313825
314825
315825
316825
317825
318825
319825
320825
321825
322825
323825
324825
325825
326825
327825
328825
329825
330825
331825
332825
333825
334825
335825
336825
337825
338825
339825
340825
341825
342825
343825
344825
345825
346825
347825
348825
349825
350825
351825
352825
353825
354825
355825
356825
357825
358825
359825
360825
361825
362825
363825
364825
365825
366825
367825
368825
369825
370825
371825
372825
373825
374825
375825
376825
377825
378825
379825
380825
381825
382825
383825
384825
385825
386825
387825
388825
389825
390825
391825
392825
393825
394825
395825
396825
397825
398825
399825
400825
401825
402825
403825
404825
405825
406825
407825
408825
409825
410825
411825
412825
413825
414825
415825
416825
417825
418825
419825
420825
421825
422825
423825
424825
425825
426825
427825
428825
429825
430825
431825
432825
433825
434825
435825
436825
437825
438825
439825
440825
441825
442825
443825
444825
445825
446825
447825
448825
449825
450825
451825
452825
453825
454825
455825
456825
457825
458825
459825
460825
461825
462825
463825
464825
465825
466825
467825
468825
469825
470825
471825
472825
473825
474825
475825
476825
477825
478825
479825
480825
481825
482825
483825
484825
485825
486825
487825
488825
489825
490825
491825
492825
493825
494825
495825
496825
497825
498825
499825
500825
501825
502825
503825
504825
505825
506825
507825
508825
509825
510825
511825
512825
513825
514825
515825
516825
517825
518825
519825
520825
521825
522825
523825
524825
525825
526825
527825
528825
529825
530825
531825
532825
533825
534825
535825
536825
537825
538825
539825
540825
541825
542825
543825
544825
545825
546825
547825
548825
549825
550825
551825
552825
553825
554825
555825
556825
557825
558825
559825
560825
561825
562825
563825
564825
565825
566825
567825
568825
569825
570825
571825
572825
573825
574825
575825
576825
577825
578825
579825
580825
581825
582825
583825
584825
585825
586825
587825
588825
589825
590825
591825
592825
593825
594825
595825
596825
597825
598825
599825
600825
601825
602825
603825
604825
605825
606825
607825
608825
609825
610825
611825
612825
613825
614825
615825
616825
617825
618825
619825
620825
621825
622825
623825
624825
625825
626825
627825
628825
629825
630825
631825
632825
633825
634825
635825
636825
637825
638825
639825
640825
641825
642825
643825
644825
645825
646825
647825
648825
649825
650825
651825
652825
653825
654825
655825
656825
657825
658825
659825
660825
661825
662825
663825
664825
665825
666825
667825
668825
669825
670825
671825
672825
673825
674825
675825
676825
677825
678825
679825
680825
681825
682825
683825
684825
685825
686825
687825
688825
689825
690825
691825
692825
693825
694825
695825
696825
697825
698825
699825
700825
701825
702825
703825
704825
705825
706825
707825
708825
709825
710825
711825
712825
713825
714825
715825
716825
717825
718825
719825
720825
721825
722825
723825
724825
725825
726825
727825
728825
729825
730825
731825
732825
733825
734825
735825
736825
737825
738825
739825
740825
741825
742825
743825
744825
745825
746825
747825
748825
749825
750825
751825
752825
753825
754825
755825
756825
757825
758825
759825
760825
761825
762825
763825
764825
765825
766825
767825
768825
769825
770825
771825
772825
773825
774825
775825
776825
777825
778825
779825
780825
781825
782825
783825
784825
785825
786825
787825
788825
789825
790825
791825
792825
793825
794825
795825
796825
797825
798825
799825
800825
801825
802825
803825
804825
805825
806825
807825
808825
809825
810825
811825
812825
813825
814825
815825
816825
817825
818825
819825
820825
821825
822825
823825
824825
825825
826825
827825
828825
829825
830825
831825
832825
833825
834825
835825
836825
837825
838825
839825
840825
841825
842825
843825
844825
845825
846825
847825
848825
849825
850825
851825
852825
853825
854825
855825
856825
857825
858825
859825
860825
861825
862825
863825
864825
865825
866825
867825
868825
869825
870825
871825
872825
873825
874825
875825
876825
877825
878825
879825
880825
881825
882825
883825
884825
885825
886825
887825
888825
889825
890825
891825
892825
893825
894825
895825
896825
897825
898825
899825
900825
901825
902825
903825
904825
905825
906825
907825
908825
909825
910825
911825
912825
913825
914825
915825
916825
917825
918825
919825
920825
921825
922825
923825
924825
925825
926825
927825
928825
929825
930825
931825
932825
933825
934825
935825
936825
937825
938825
939825
940825
941825
942825
943825
944825
945825
946825
947825
948825
949825
950825
951825
952825
953825
954825
955825
956825
957825
958825
959825
960825
961825
962825
963825
964825
965825
966825
967825
968825
969825
970825
971825
972825
973825
974825
975825
976825
977825
978825
979825
980825
981825
982825
983825
984825
985825
986825
987825
988825
989825
990825
991825
992825
993825
994825
995825
996825
997825
998825
999825
1000825