

**RESOLUTION 17-11**

**A RESOLUTION CONCERNING THE INITIATION OF PROCEEDINGS  
TO CONSIDER PROPOSED ANNEXATION BY  
THE CITY OF BLOOMINGTON, MONROE COUNTY, INDIANA  
(Northeast Bloomington Annexation Area)**

WHEREAS, the City of Bloomington (“City”) has studied the City’s municipal boundaries, surrounding urban territory, provision of local government services, and opportunities for growth and development of the City and its surrounding community; and

WHEREAS, the City has identified potential areas outside of the City’s current municipal boundaries for consideration of annexation to the City, including the “Northeast Bloomington Annexation Area”, depicted and described in Exhibit A attached hereto; and

WHEREAS, the City has developed proposed plans for the extension of capital and noncapital services in the Northeast Bloomington Annexation Area, and identified the estimated fiscal impact on taxpayers in the Northeast Bloomington Annexation Area; and

WHEREAS, prior to introduction of an annexation ordinance, conducting a public hearing, or considering adoption of an ordinance to annex the Northeast Bloomington Annexation Area, the City desires to conduct an outreach program to inform citizens regarding the proposed annexation; and

WHEREAS, the City will provide notice to landowners of the dates, times, and locations of public information meetings to provide citizens with information regarding the proposed annexation; and

WHEREAS, the City desires to take the first step of initiating the process for considering the annexation of the Northeast Bloomington Annexation Area set forth herein.

NOW, THEREFORE, BE IT RESOLVED BY THE COMMON COUNCIL OF THE CITY OF BLOOMINGTON, MONROE COUNTY, INDIANA, THAT:


SECTION 1. The City hereby initiates the process for considering the annexation of the Northeast Bloomington Annexation Area, as generally described and depicted in Exhibit A attached hereto and incorporated herein by reference.

SECTION 2. The City hereby adopts the preliminary Fiscal Plan for Municipal Annexation (version 1.0), prepared by Reedy Financial Group P.C. and dated February 3, 2017, as the proposed plans for the extension of capital and noncapital services in the Northeast Bloomington Annexation Area.


SECTION 3. The Northeast Bloomington Annexation Area and proposed plans set forth herein are a part of a continuing process for annexation review and consideration by the City. The City reserves the right to amend this resolution, the Northeast Bloomington Annexation Area, and/or the fiscal plan as may otherwise be permitted or required by Ind. Code § 36-4-3 *et seq.*

SECTION 4. The provisions and descriptions of this Resolution, the Northeast Bloomington Annexation Area, and the fiscal plans are severable, and if a court of competent jurisdiction determines any portion(s) invalid for any reason, such determination shall not affect the remaining portions thereof.

PASSED by the Common Council of the City of Bloomington, Monroe County, Indiana, upon this 15 day of February, 2017.


  
SUSAN SANDBERG, President  
Bloomington Common Council

ATTEST:

  
NICOLE BOLDEN, Clerk  
City of Bloomington

PRESENTED by me to the Mayor of the City of Bloomington, Monroe County, Indiana, upon this 16 day of February, 2017.

ATTEST:

  
NICOLE BOLDEN, Clerk  
City of Bloomington

SIGNED and APPROVED by me upon this 16<sup>th</sup> day of February, 2017.

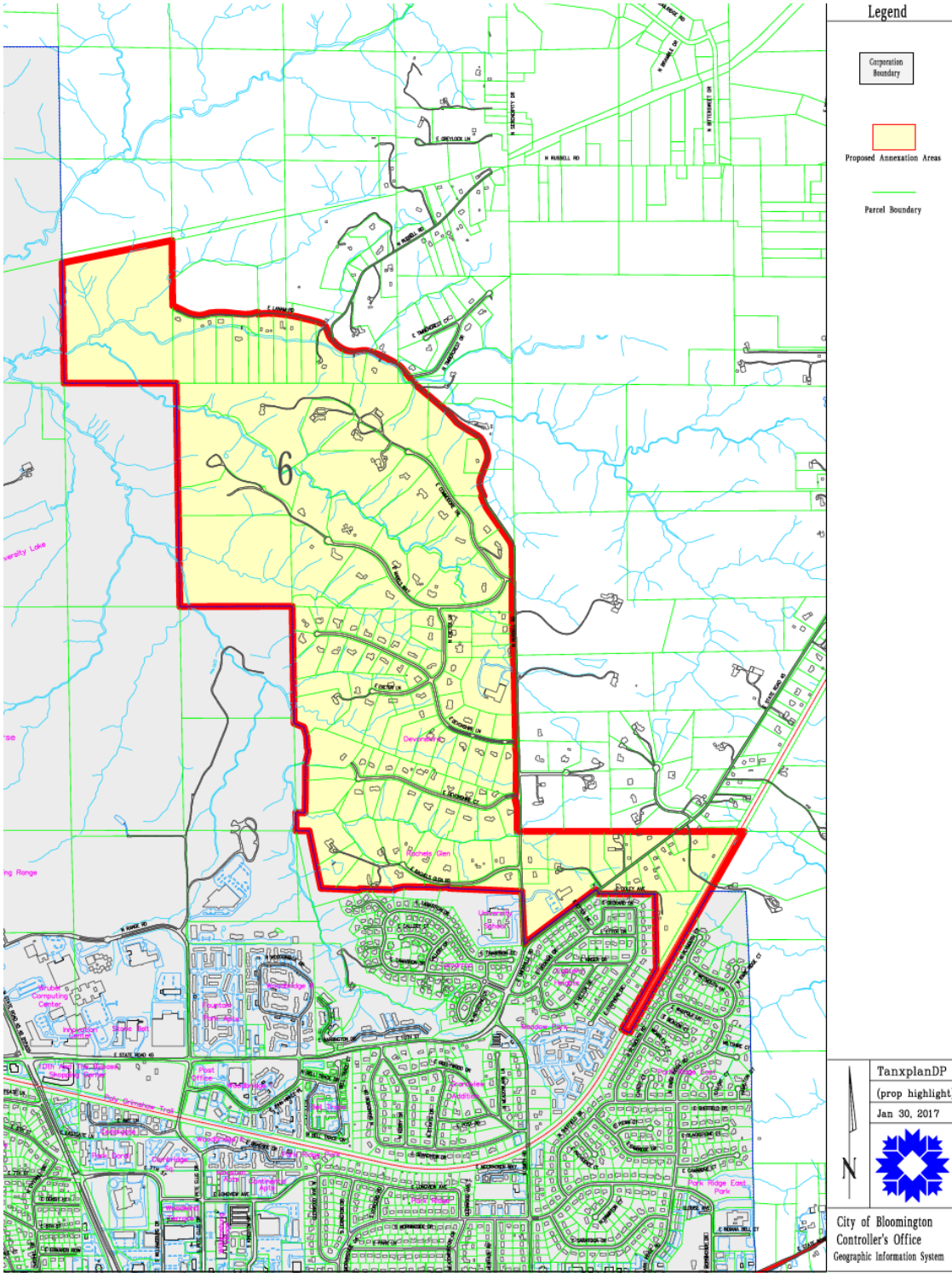
  
JOHN HAMILTON, Mayor  
City of Bloomington

#### Synopsis

This resolution initiates the process for considering the annexation of the Northeast Bloomington Annexation Area, as generally described and depicted in Exhibit A, which is attached to the resolution. It also adopts a preliminary Fiscal Plan for this annexation, as the proposed plans for the extension of capital and noncapital services in this area, with the understanding that it is subject to amendment as part of a continuing process for annexation review and consideration by the City. The next step in this continuing process will be the conducting of an Outreach Program which is intended to give landowners more information about the proposed annexation.


# Exhibit A

## Northeast Bloomington Annexation Area

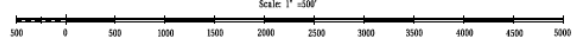


- Legend**
- Corporation Boundary
  - Proposed Annexation Areas
  - Parcel Boundary

TanxplanDP  
 (prop highlight)  
 Jan 30, 2017



City of Bloomington  
 Controller's Office  
 Geographic Information System



City of Bloomington, Indiana  
 Geographic Information System

This map was produced by the City of Bloomington GIS for use by the City and general public as map information. The geographic and electronic information is based on aerial photography from March 1998 and March 2002. Aerials from other aerial photography taken in April 1998, April 2001, March 2004, and April 2005. Information is updated by GIS technicians from development drawings, plans, and other sources. The accuracy of information contained in this document is based on National Mapping Standards, version 1 & 2, 1973.

The Corporation boundary reflects annexation effective January 1, 2011.  
 Information and Technology Services Department  
 7 January 2017

### Proposed Annexation Areas 2017 Area 6

**Important Notice Regarding Liability:**  
 The positions of underground utilities are shown approximately. For line locations in the area of National University, call 812-335-3265. For home water, sewer, gas, telephone, and electric lines, call 1-800-360-5844. To have utility location marked, call 812-335-3265.