

RESOLUTION 04-16

(Passed 9-0)

TO ADOPT A WRITTEN FISCAL PLAN AND TO ESTABLISH A POLICY FOR THE PROVISION OF CITY SERVICES TO AN ANNEXED AREA (Hoadley Quarries Area)

- WHEREAS, the City of Bloomington desires to annex the area known as the Hoadley Quarries Area, which is more specifically described in Ordinance 04-25; and
- WHEREAS, responsible planning and state law require adoption of a fiscal plan and a definite policy for the provision of City services to the annexed area; and
- WHEREAS, such a plan has been developed and presented to the Common Council, entitled, "Fiscal Plan, Annexation of the Hoadley Quarries Area";

NOW, THEREFORE, BE IT HEREBY RESOLVED BY THE COMMON COUNCIL OF THE CITY OF BLOOMINGTON, MONROE COUNTY, INDIANA, THAT:

SECTION 1. The Common Council of the City of Bloomington, Monroe County, Indiana, hereby approves and adopts the Fiscal Plan, Annexation of the Hoadley Quarries Area, which plan is attached hereto and made a part hereof, and hereby approves and adopts the specific policies for implementation of the plan as set out therein, and establishes a definite policy to provide services in accordance with said plan.

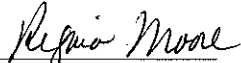
SECTION 2. Any monies necessary for the provision of services as described and itemized in the attached plan shall be budgeted and appropriated from the applicable fund, pursuant to state law and the City's budget procedure.

SECTION 3. It is anticipated that this annexation will not result in the elimination of jobs for employees of other governmental entities, but in the event it does, then the Director of Employee Services of the City of Bloomington is hereby directed to assist such employees in obtaining new employment but nothing herein shall require the City to hire such employees.

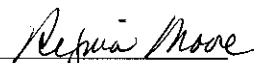
PASSED AND ADOPTED by the Common Council of the City of Bloomington, Monroe County, Indiana, upon this 8th day of September, 2004.


MICHAEL DEIKHOFF, President
Bloomington Common Council

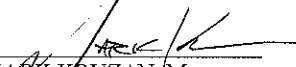
ATTEST:


REGINA MOORE, Clerk
City of Bloomington

PRESENTED by me to the Mayor of the City of Bloomington, Monroe County, Indiana, upon this 8th day of September, 2004.


REGINA MOORE, Clerk
City of Bloomington

SIGNED and APPROVED by me upon this 8TH day of SEPTEMBER, 2004.


MARK KRIZAN, Mayor
City of Bloomington

SYNOPSIS

This resolution approves and adopts the Fiscal Plan, Annexation of the Hoadley Quarries Area. A fiscal plan is required by state law and sets forth a schedule and policy for the implementation of the various services the City will provide to the annexed area.

*Signed copies to:
legale (5)
controller
ES*

RESOLUTION 04-16

(Passed 9-0)

TO ADOPT A WRITTEN FISCAL PLAN AND TO ESTABLISH A POLICY FOR THE PROVISION OF CITY SERVICES TO AN ANNEXED AREA (Hoadley Quarries Area)

- WHEREAS, the City of Bloomington desires to annex the area known as the Hoadley Quarries Area, which is more specifically described in Ordinance 04-25; and
WHEREAS, responsible planning and state law require adoption of a fiscal plan and a definite policy for the provision of City services to the annexed area; and
WHEREAS, such a plan has been developed and presented to the Common Council, entitled, "Fiscal Plan, Annexation of the Hoadley Quarries Area";

NOW, THEREFORE, BE IT HEREBY RESOLVED BY THE COMMON COUNCIL OF THE CITY OF BLOOMINGTON, MONROE COUNTY, INDIANA, THAT:

SECTION 1. The Common Council of the City of Bloomington, Monroe County, Indiana, hereby approves and adopts the Fiscal Plan, Annexation of the Hoadley Quarries Area, which plan is attached hereto and made a part hereof, and hereby approves and adopts the specific policies for implementation of the plan as set out therein, and establishes a definite policy to provide services in accordance with said plan.

SECTION 2. Any monies necessary for the provision of services as described and itemized in the attached plan shall be budgeted and appropriated from the applicable fund, pursuant to state law and the City's budget procedure.

SECTION 3. It is anticipated that this annexation will not result in the elimination of jobs for employees of other governmental entities, but in the event it does, then the Director of Employee Services of the City of Bloomington is hereby directed to assist such employees in obtaining new employment but nothing herein shall require the City to hire such employees.

PASSED AND ADOPTED by the Common Council of the City of Bloomington, Monroe County, Indiana, upon this 8th day of September, 2004.

[Signature]
MICHAEL DEIKHOFF, President
Bloomington Common Council

ATTEST:

[Signature]
REGINA MOORE, Clerk
City of Bloomington

PRESENTED by me to the Mayor of the City of Bloomington, Monroe County, Indiana, upon this 8th day of September, 2004.

[Signature]
REGINA MOORE, Clerk
City of Bloomington

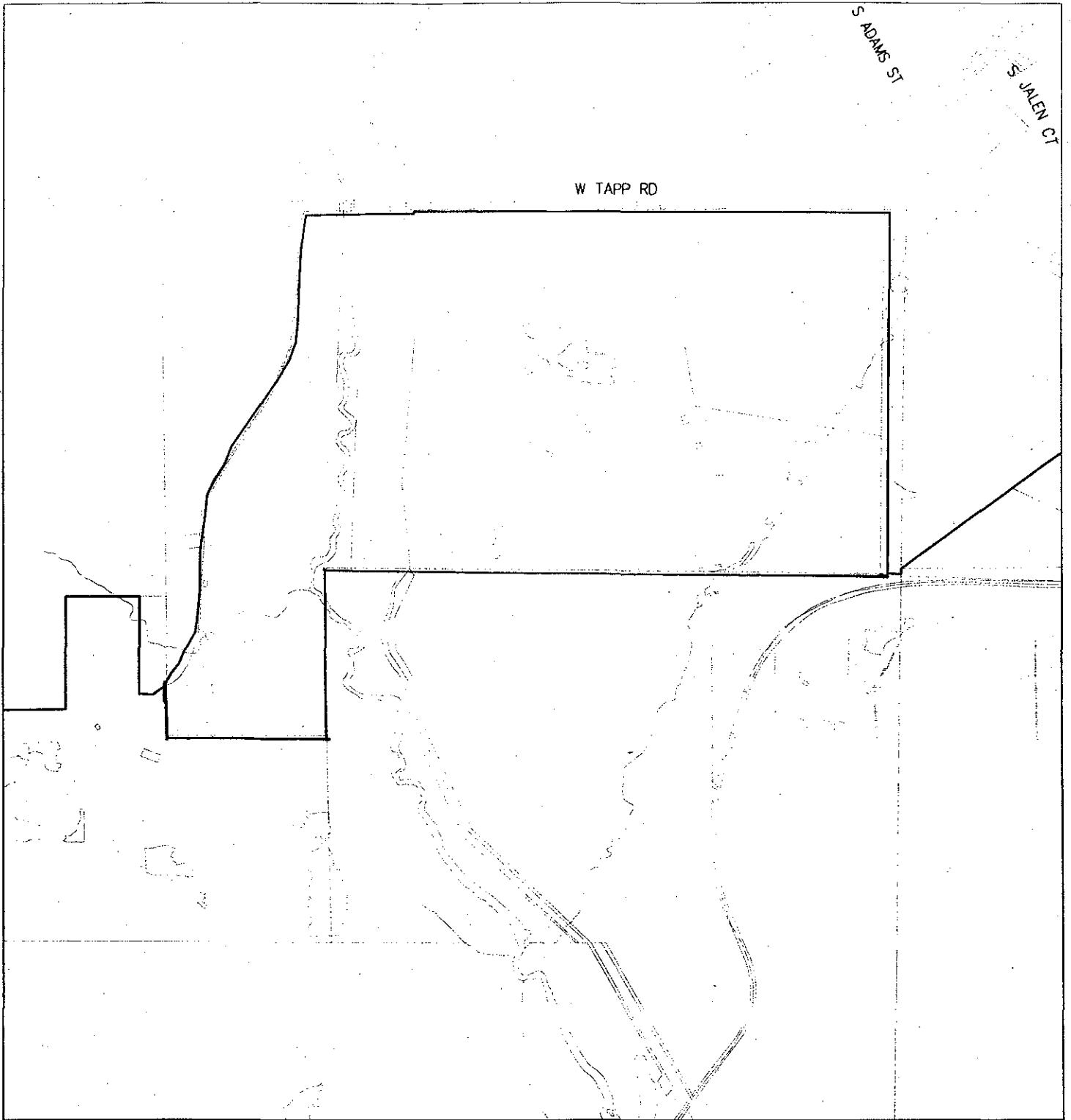
SIGNED and APPROVED by me upon this 8th day of September, 2004.

[Signature]
MARK KRUZAN, Mayor
City of Bloomington

SYNOPSIS

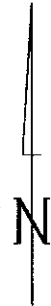
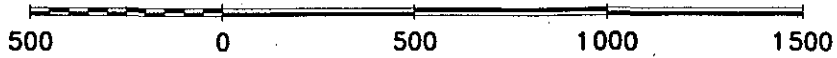
This resolution approves and adopts the Fiscal Plan, Annexation of the Hoadley Quarries Area. A fiscal plan is required by state law and sets forth a schedule and policy for the implementation of the various services the City will provide to the annexed area.

Signed copies to:
League (5)
Controller
ES



Hoadley Quarries

By: clarks
28 Jul 04



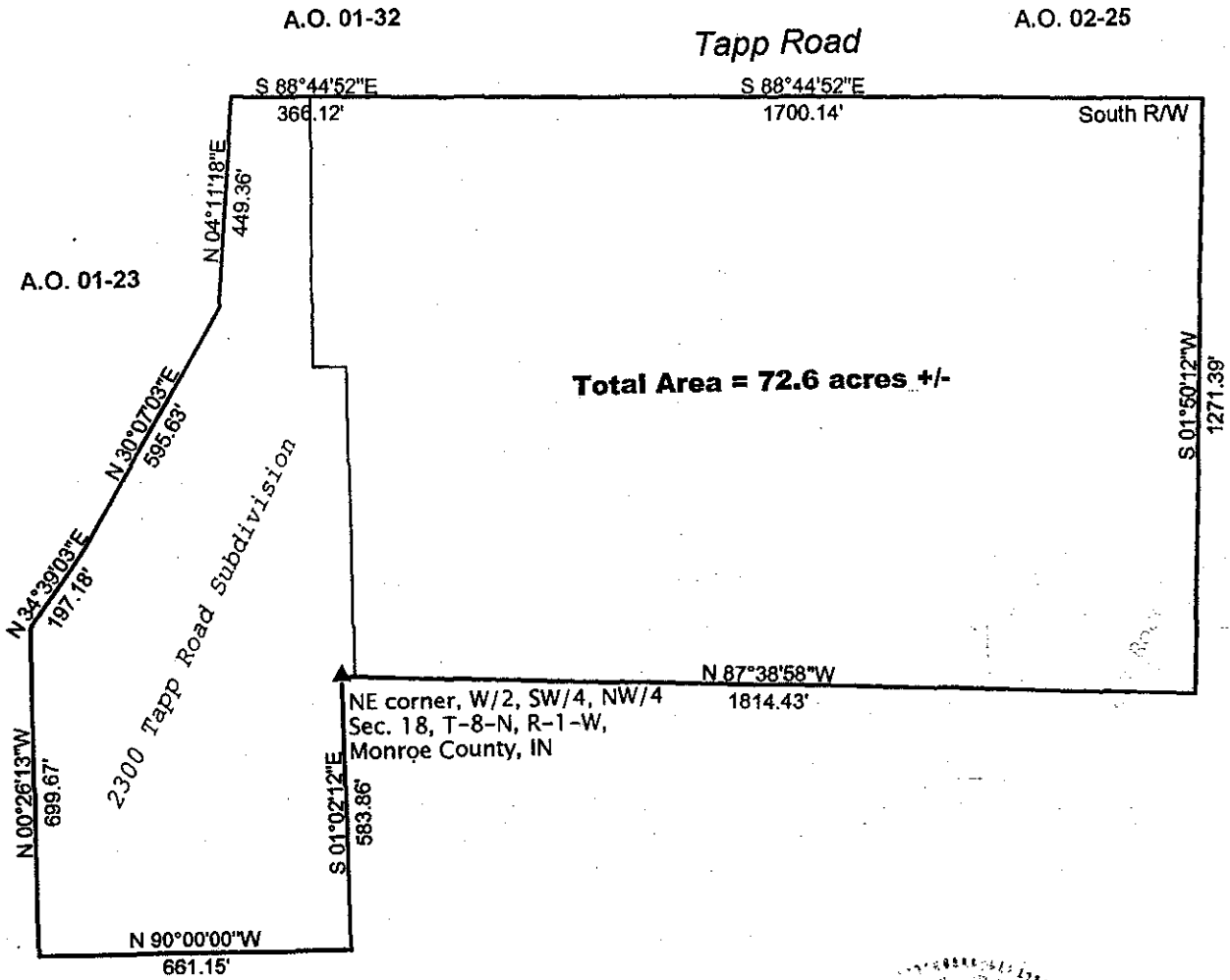
Controller's Office

Scale: 1" = 500'

For reference only; map information NOT warranted.

Bloomington Annexations Hoadley Quarries Area

Job #389



A.O. 01-23

A.O. 01-32

Tapp Road

A.O. 02-25

2300 Tapp Road subdivision



Jess A. Gwinn

 Jess A. Gwinn, RLS #9300019
 RR #1, Box 285
 Solsberry, IN 47459
 812/876-7111

3/24/04

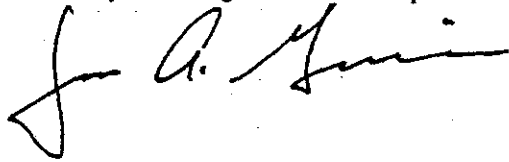
**LEGAL DESCRIPTION
BLOOMINGTON ANNEXATIONS
HOADLEY QUARRIES AREA
JOB #389**

A part of the northeast quarter of Section 18, Township 8 North, Range 1 West, Monroe County, Indiana, and being more particularly described as follows:

Beginning at the northeast corner of the west half of the southwest quarter of said northeast quarter; thence South 1 degree 02 minutes 12 seconds East 583.86 feet on the east line of said west half; thence North 90 degrees 00 minutes 00 seconds West 661.15 feet to the west line of the aforesaid northeast quarter; thence North 0 degrees 26 minutes 13 seconds West 699.67 feet to a point on the east line Annexation Ordinance 01-23; thence on said east line the following three (3) courses: 1) North 34 degrees 39 minutes 03 seconds East 197.18 feet; thence 2) North 30 degrees 07 minutes 03 seconds East 595.63 feet; thence 3) North 4 degrees 11 minutes 18 seconds East 449.36 feet to the south right-of-way line of Tapp Road; thence South 88 degrees 44 minutes 52 seconds East 366.12 feet on said south right-of-way line to the southeast corner of Annexation Ordinance 01-32; thence continuing South 88 degrees 44 minutes 52 seconds East along said right-of-way line and the south line of Annexation Ordinance 02-25 a distance of 1700.14 feet; thence South 1 degree 50 minutes 12 seconds West 1271.39 feet on the west line of said Annexation Ordinance 02-25; thence North 87 degrees 38 minutes 58 seconds West 1814.43 feet to the POINT OF BEGINNING; said described tract containing 72.60 acres, more or less.

This deed description was prepared in the office without benefit of a field survey of examination of adjoining deeds.

The survey work shown hereon was performed either by me or under my direct supervision and control and to the best of my knowledge and belief was performed according to the survey requirements in 865 IAC 1-12-1 to 19.



Jess A. Gwinn, RLS #9300019
RR #1, Box 285
Solsberry, IN 47459
812/876-7111

3/24/04

