

AGENDA

UTILITIES SERVICE BOARD MEETING

Utilities Service Center Board Room
City of Bloomington Utilities
600 E Miller Dr
Bloomington, IN 47401

Seth Debro, President
Kirk White, Vice President
Jeff Ehman
Amanda Burnham
Jim Sherman
Megan Parmenter
Molly Stewart
David Hittle, ex officio
Matt Flaherty, ex officio

This meeting may be attended electronically via Zoom by using the following link:

[Join Zoom Meeting](#)

Meeting ID: 860 6026 2999

Passcode: 390372

Monday, October 20, 2025

4:00 p.m. Property & Planning Subcommittee

- White, Chair
- Ehman
- Sherman
- (alternate) Stewart

- I. Call to order
- II. Rural Sanitary Sewer Service in Monroe County - Richard Martin
- III. Petitions and communications*
- IV. Adjournment

* Public comment will be limited to 5 minutes per person

Rural Sanitary Sewer Service in Monroe County

Presentation to Utility Services Board,
City of Bloomington Utilities Department
by Richard Martin, President,
Monroe County Redevelopment Commission
October 2025

Rural Sanitary Sewer Service Summary

- Monroe County Redevelopment Commission is actively seeking a Residential TIF opportunity where anticipated housing density requires sanitary sewer services: hence, collaboration with sanitary sewer system operators is essential.
- Monroe County has 12 sanitary sewer treatment facilities:
 - Municipal (Bloomington - 2, Ellettsville - 1),
 - Wastewater District (SCRSD - 3),
 - Government (State - 1) and
 - Mixed Ownership (Public/Private – 6).
- Municipal systems serve rural areas as well as incorporated areas.
- Several localized treatment facilities for individual industrial facilities (pre-treatment, remediation, isolated location)
- South Central Regional Sewer District (SCRSD)
 - Serves 4 primary areas in Monroe County and 1 primary area in northern Lawrence County.
 - Operates 4 treatment plants and also delivers sewage to CBU for treatment.
 - Collaborates with 5 different water utilities to obtain water usage information.
 - Operates several kinds of treatment facilities.

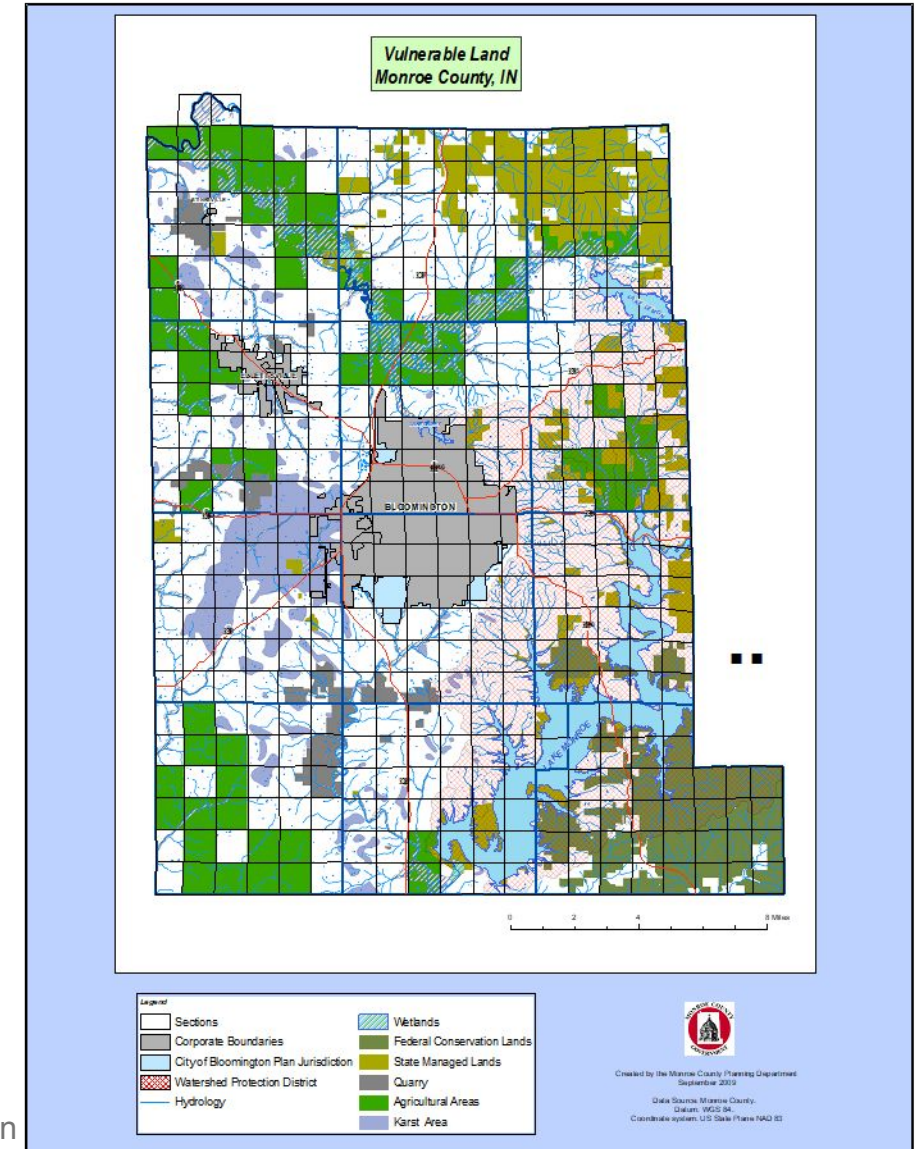
NPDES Permits in Monroe County

Permit Name	Class	Facility Type Desc	Total Actual Average Flow (MGD)	Design Flow (MGD)
BLOOMINGTON S (DILLMAN ROAD)	IV	Municipal or Water District	11	15.0
BLOOMINGTON N (BLUCHER POOLE)	IV	Municipal or Water District	2	6.0
ELLETTSVILLE MUNICIPAL WWTP	III	Municipal or Water District	1.6	2.3
SOUTH CENTRAL RSD (CASLON WWTP)	II	Municipal or Water District	0.113	0.3
SOUTH CENTRAL INDIANA RSD (STINESVILLE WWTP)	I	Municipal or Water District	0.008	0.039
SOUTH CENTRAL RSD (NORTH PARK WWTP)	I	Municipal or Water District	0.019	0.1
PAYNETOWN STATE RECREATION AREA	I	State Government	0.002	0.045
UNIONVILLE ELEMENTARY SCHOOL WWTP	I	Mixed Ownership (e.g., Public/Private)		0.021
HARDIN-MONROE, INC.	I	Mixed Ownership (e.g., Public/Private)		0.006
SALT CREEK SERVICES WWTP	I	Mixed Ownership (e.g., Public/Private)	0.004	0.015
CAMP HUNT WWTP	I	Mixed Ownership (e.g., Public/Private)	0.001	0.01
PEDIGO BAY WWTP	I	Mixed Ownership (e.g., Public/Private)	0.001	0.022

Socio-ecological constraints

Monroe County has several socio-ecological constraints that impact suitable locations for sanitary sewer treatment plant and collection system construction and operation:

- State water body to receive outfall at rated capacity
- Elevation variability over collection system limiting gravity-based flow
- Shallow soils limiting depth to rock for piping
- Karst formations of unknown stability and function
- Suitable treatment plant service area
- Sufficient utilization density to offset costs
- Multi-jurisdictional service providers
- Residential and commercial use regulations



South Central Regional Sewer District

- Designated as a “special district” of Indiana government - IDEM
- Authorized to provide sanitary sewer service in a prescribed territory for:
 - Monroe County outside corporate limits of Bloomington and Ellettsville;
 - Lawrence County Marshall Township (north central area of county).
- Operate as 5 divisions with distinct service areas –
 - Lake Monroe: The Point, surrounding development and Harrodsburg
 - Stinesville: existing community
 - North Park: North Park PUD of Monroe County along west SR46
 - Briarwood: subdivisions and commercial areas at intersection of SR37 and Old SR37 near Juda, Indiana, in Lawrence County
 - Van Buren: 2 subdivisions on west SR45 and Bryn Mawr subdivision on eastside

SCRSD organization

- Board of Trustees appointed by governmental units -
 - Monroe County Commissioners – 4, Lawrence County Commissioners - 1
 - Monroe County Council – 1, City of Bloomington - 1
 - Governor of Indiana – 4
- No employees – utilize contracts for all services
 - Operations and Maintenance – Bynum Fanyo Utilities
 - Treatment plants and collection systems
 - IDEM liaison
 - Billing and Purchasing - Bynum Fanyo Utilities
 - Billing and accounts receivable, including Lien processing
 - Purchasing and accounts payable
 - Accounting and Financial Reporting - Stampfli Associates CPAS
 - Monthly payments and financial statements
 - Support Trustee monitoring of contract services
 - State and Federal Government reporting
 - Project specific contracts (plant construction, collection expansion, major maintenance and specialized services).

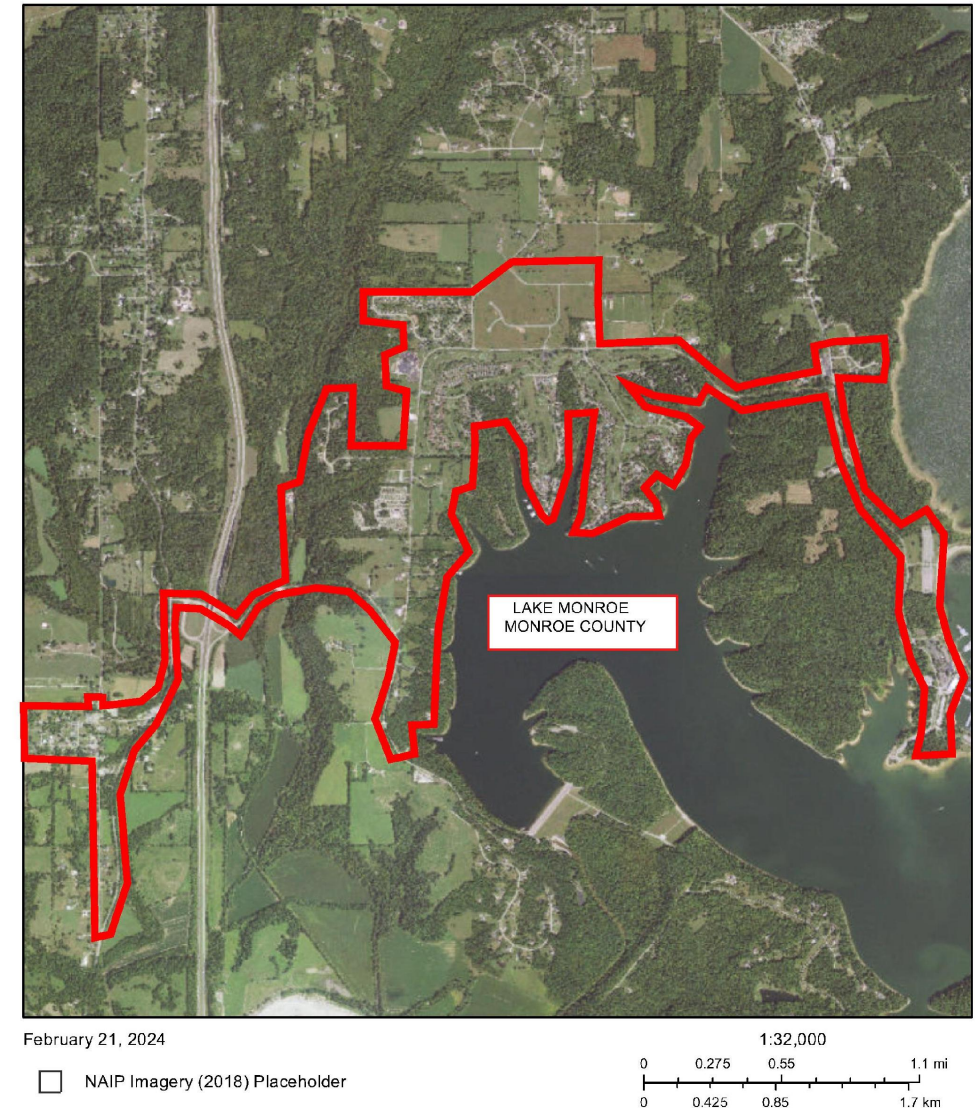
Lake Monroe Division

Approximately 1300 customers serviced by a
1 treatment plant on Foggy Bottom Rd.
Collection system consists of 29 lift stations, most
with dual pump and alarm system.
Water meter readings used to calculate billing are
provided by Southern Monroe Water Corporation.
Current charges: Base amount – \$42.75/mo.
over 2000 gpm - \$6.25/1000 gal.

Caslon Wastewater Treatment Plant

- 0.3 MGD Class II Facility
- Extended Aeration System
- 1 Million Gallon Equalization Basin
- Ultraviolet Disinfection
- Average Flow: 0.089 MGD
- Peak Flow: 0.93 MGD

LAKE MONROE SERVICE AREA



U.S. Geological Survey (USGS), Indiana Department of Transportation (INDOT), U.S. Census Bureau (USCB), Indiana Geographic Information Council (IGIC), UIITS, Indiana Spatial Data Portal, National Agriculture Imagery Program (NAIP), Farm Services Agency (FSA), U.S. Department of Agriculture (USDA), UIITS, Indiana Spatial Data Portal

Stinesville Division

Approximately 100 customers serviced by septic tanks and gray water treatment plant on Moon Rd.

Collection system consists of 3 lift stations, one with dual pump and alarm and 100 septic tanks.

SCRSD owns the septic tanks and property owner responsible for connection of septic tank.

Water meter readings used to calculate billing are provided by Bean Blossom Patricksburg Water Corporation (1000 gal. resolution)

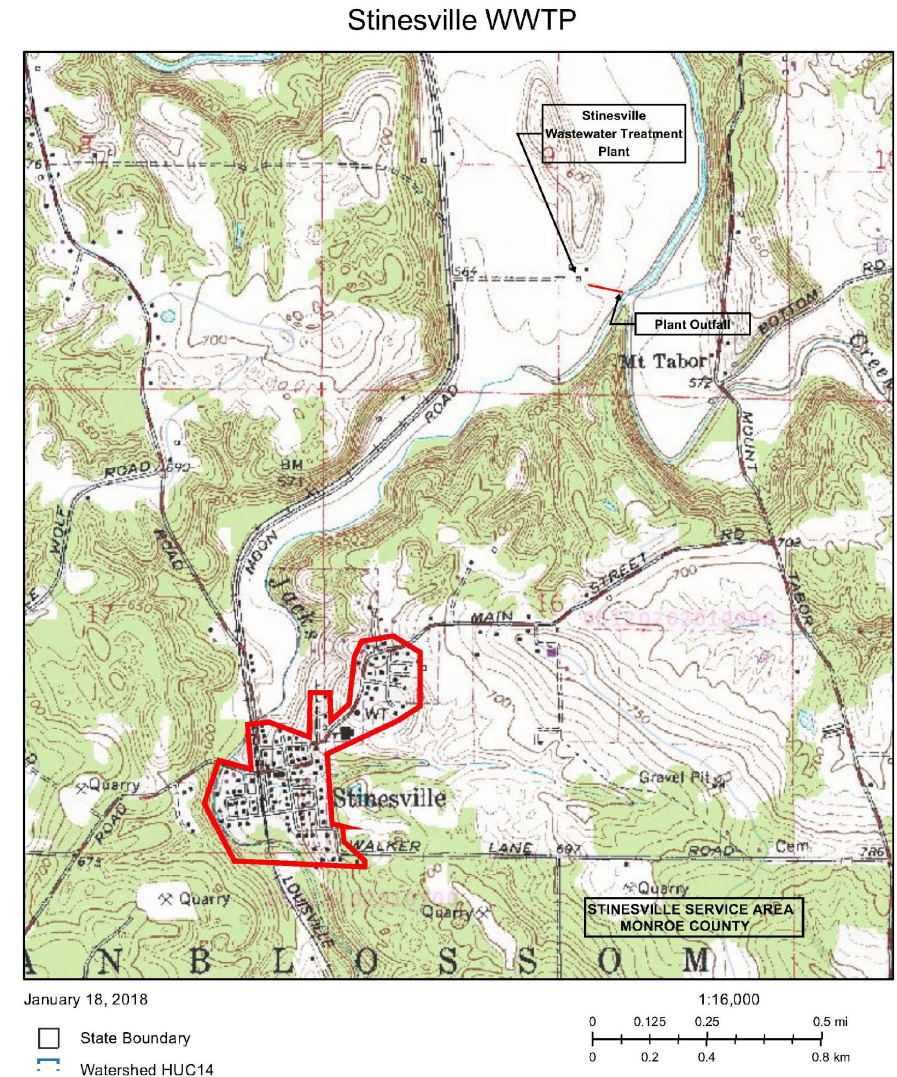
Current charges: Base amount – \$32.69/mo.
over 2000 gpm - \$11.75/1000 gal.
Unmetered - \$45.00/mo.

Stinesville Wastewater Treatment Plant

- 0.039 MGD Class I Facility
- Two-Cell Aerated Lagoon System
- Chemical Disinfection
- Average Flow: 0.006 MGD
- Peak Flow: 0.064 MGD

10/20/2025

Prepared by Richard Martin



United States Geological Survey (USGS)
U.S. Geological Survey
Indiana Department of Transportation (INDOT), U.S. Census Bureau (USCB)
Indiana Geographic Information Council (IGIC), UITS, Indiana Spatial Data
Portal

North Park Division

Approximately 6 customers, all commercial, currently serviced by treatment plant on Hunter Valley Rd.
Service area is North Park PUD in SR46 TIF District.
Currently deployed collection system consists of 1 lift station with dual pumps and alarm.
Water meter readings used to calculate sewer charges are provided by City of Bloomington.

Current charges: Base amount – \$63.80/mo.
over 2000 gpm - \$10.45/1000 gal.
variable meter charge - \$8.36 to \$591.47

North Park Wastewater Treatment Plant

- 0.01 MGD Class I Facility
- Extended Aeration System
- Ultraviolet Disinfection
- Average Flow: 0.019 MGD
- Peak Flow: 0.107 MGD

10/20/2025

Prepared by Richard Martin



U.S. Geological Survey (USGS), Indiana Department of Transportation (INDOT), U.S. Census Bureau (USCB), Indiana Geographic Information Council (IGIC), UITS, Indiana Spatial Data Portal
National Agriculture Imagery Program (NAIP), Farm Services Agency (FSA), U.S. Department of Agriculture (USDA), UITS, Indiana Spatial Data Portal

Briarwood Division

Approximately 100 customers, a mix of residential and commercial, serviced by treatment plant on Briarwood Lane.

Collection system consists of 4 lift stations, with dual pump and alarms.

Water service provided by North Lawrence Water Corporation but does not provide meter readings.

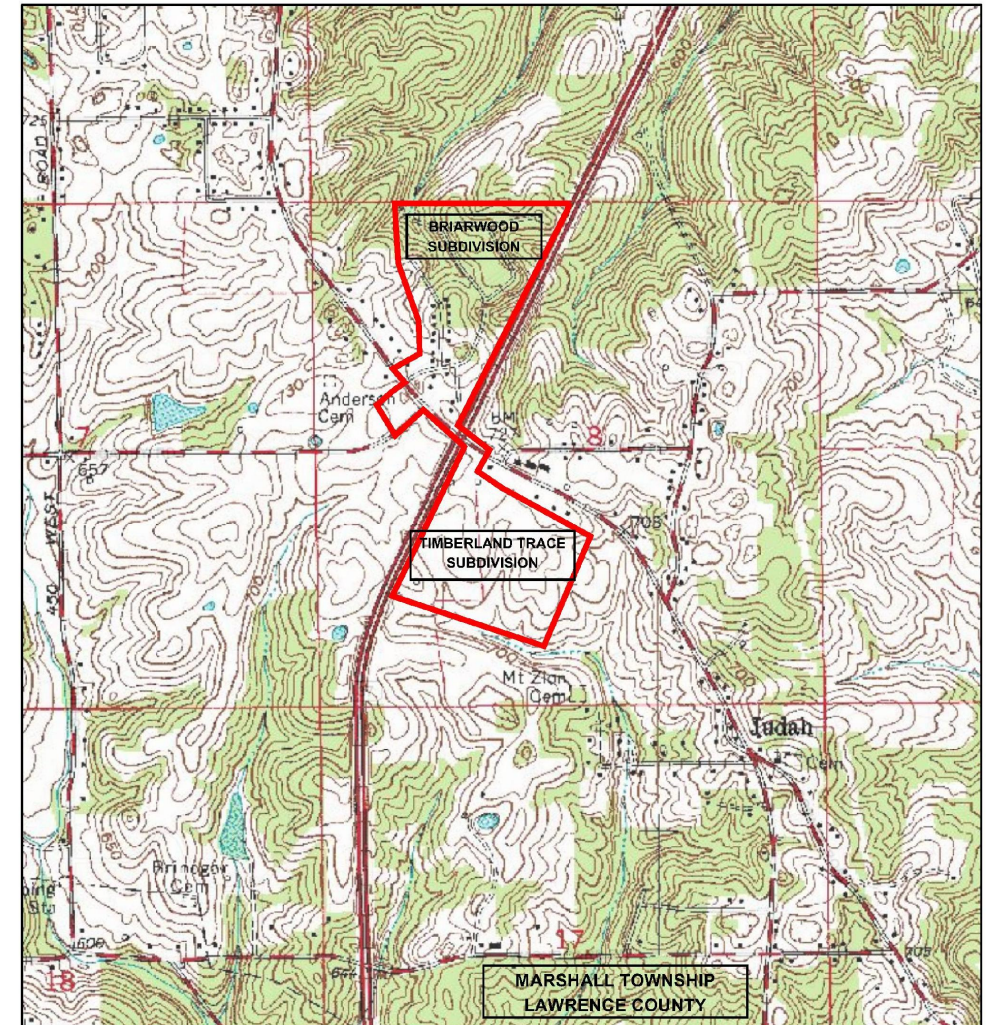
Current charges: \$67.00/Equivalent Dwelling Unit. Equivalent Dwelling Unit basis provided by State of Indiana – range is 1 to 7 EDU at division locations.

Briarwood Wastewater Treatment Plant

- 0.037 MGD Class I Facility
- Extended Aeration System
- Ultraviolet Disinfection
- Average Flow: 0.025 MGD
- Peak Flow: 0.031 MGD

10/20/2025

Briarwood Service Area



February 5, 2018

□ State Boundary

1:16,000

0 0.125 0.25 0.5 mi
0 0.2 0.4 0.8 km

United States Geological Survey (USGS)
Indiana Department of Transportation (INDOT), U.S. Census Bureau (USCB)
Indiana Geographic Information Council (IGIC), UITS, Indiana Spatial Data
Portal

Van Buren Division

Approximately 170 customers serviced by CBU.
Two distinct collection systems, each having 1 lift station with dual pump and alarm.

Area 1 located along West SR45 connects to a CBU lift station near the Monroe County Highway Garage on Kirby Road.

Water reading used to calculate sewer charge provided by Van Buren Water Corporation.

Area 2 located along S. Snoddy Rd. connects to CBU at S. Snoddy Rd..

Water reading used to calculate sewer charge provided by Eastern Monroe Water Corporation.

Current charges: Base amount – \$69.00/mo.

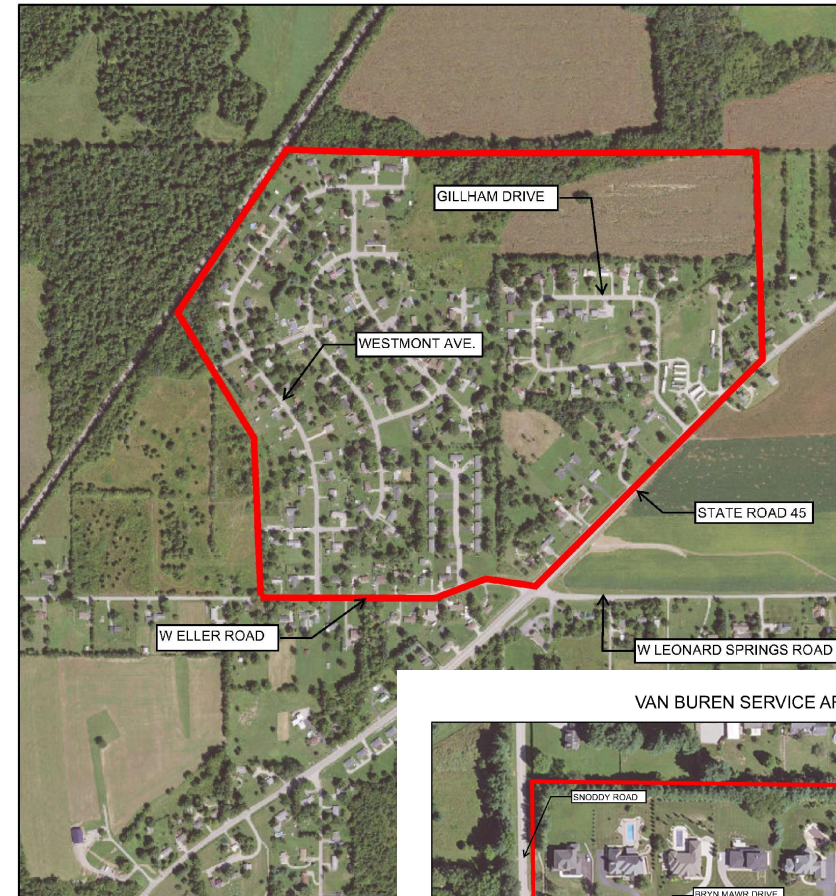
over 2000 gpm - \$11.45/1K

Unmetered - \$80.45

Reserved connection - \$36.00

10/20/2025

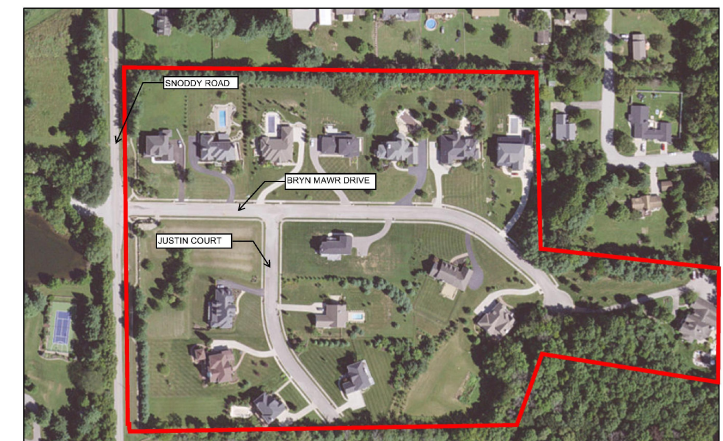
VAN BUREN SERVICE AREA 1 OF 2



February 21, 2024

□ NAIP Imagery (2018) Placeholder

VAN BUREN SERVICE AREA 2 OF 2



February 21, 2024

□ NAIP Imagery (2018) Placeholder

0 0.015 0.03 0.06 mi
0 0.0275 0.055 0.11 km
U.S. Geological Survey (2023), Indiana Department of Transportation (INDOT), U.S. Census Bureau (2020), Indiana Geographic Information

SCRSD – CBU Agreement Highlights

- Project initiated in 2004 – 2005 to remediate wide-spread septic system failures at two subdivisions on West SR45.
- Cooperative effort between CBU and SCRSD signed in May 2005.
 - CBU built new lift station in Sunrise Estates and force main to Monroe County Highway Garage manhole.
 - SCRSD built collection system for Sunrise Estates (35 lots), Lonbar Estates (17) and Westmount Estates (115 lots).
 - 166 of about 300 planned and approved connections are in service – rest on septic or vacant.
 - 40-year term beginning with first utilization of treatment services.
 - SCRSD has loan from USDA Rural Development with ~\$50,000 annual debt service payment through 2044.
- Bryn Mawr subdivision of 17 lots and 1 lift station added to division at a later time.
- SCRSD maintains both collection systems and lift stations.
- CBU bills SCRSD based upon reported total volume treated from each collection system based upon water usage (Summer discount applies).
- Average monthly billing for 1/2025 – 8/2025 is \$5,240 for Area 1 and \$890 for Area 2.