



City of Bloomington Common Council

Legislative Packet - Addendum

Issued on Wednesday, 20 July 2022

Wednesday, 20 July 2022

Regular Session at 6:30 pm

Bloomington - Monroe County, Indiana
Local Public Officials' Statement on the Reversal of Roe v. Wade
July 1, 2022

In response to the devastating and harmful decision by the US Supreme Court to overturn Roe v. Wade, the undersigned public officials in Bloomington, Monroe County, and Township government stand together in support of an individual's right to bodily autonomy and reproductive choice. Further,

- As community leaders in Bloomington-Monroe County, we are proud to fund the healthcare, childcare, and birth control needs of low-income individuals and families through multiple local grant programs and through Township assistance. We stand with Planned Parenthood and the All Options Pregnancy Center as they meet the reproductive healthcare needs of the most vulnerable in our community, and
- We call upon State Legislators in Indiana to exercise reason and respect, and to protect individuals' right to make their own healthcare decisions in consultation with their own healthcare providers. We object to any legislative course of action that further erodes a person's right to choose.

Thoughtful compassion is the foundation of any just, equitable community. As public officials, it is our responsibility to speak out when we see rights stripped away from our residents, and it is our obligation to oppose decisions that will cause unjust hardship and increase poverty for those we represent. We object to any civil or human right being taken away by activists on the US Supreme Court and to any legislative action that undermines the well-being of our residents or the State of Indiana.

Kim Alexander

Bloomington Township Trustee

Nicole Bolden

Bloomington City Clerk

Michelle Bright

Benton Township Trustee

Nicole Browne

Monroe County Clerk

Dan Combs

Perry Township Trustee

Jennifer Crossley

Monroe County Council – District IV

Trent Deckard

Monroe County Council – At Large

Lorraine Merriman Farrell

Bloomington Township Board

Matt Flaherty

Bloomington Common Council – At Large

Penny Githens

Monroe County Commissioner

John Hamilton

Mayor – City of Bloomington

Joe Husk

Benton Township Board

Peter Iversen

Monroe County Council – District I

Lee Jones

Monroe County Commissioner

Hans Kelson

Benton Township Board

Jessica McClellan

Monroe County Treasurer

Geoff McKim

Monroe County Council – At Large

Cheryl Munson

Monroe County Council – At Large

Isabel Piedmont-Smith

Bloomington Common Council – District V

Dave Rollo

Bloomington Common Council – District IV

Kate Rosenbarger

Bloomington Common Council – District I

Susan Sandberg

Bloomington Common Council – At Large

Eric Schmitz

Monroe County Recorder

Sue Sgambelluri

Bloomington Common Council – District II

Judy Sharp

Monroe County Assessor

Jim Sims

Bloomington Common Council – At Large

Catherine Smith

Monroe County Auditor

Ron Smith

Bloomington Common Council – District III

William E. Smith III

Van Buren Township Board

Vic Streiff

Polk Township Board

Barb Sturbaum

Perry Township Board

Julie Thomas

Monroe County Commissioner

Stephen Volan

Bloomington Common Council – District VI

Kate Wiltz

Monroe County Council – District II

Community Advisory on Public Safety (CAPS) Commission

2022 Annual Report

July 20, 2022

Presented by: Jason Michalek, Nejla Routsong



Statutory Authority: Ordinance 20-20

The CAPS Commission's goal is to **increase the safety of all Bloomington community members, especially those often marginalized** due to race, disability, gender, sexual identity, or sexual orientation.

The Commission will **perform research and gather data on the perceptions and preferences about public safety from community members, with specific focus on data gathered from minority community members**, individuals who are disabled, and other often marginalized community members.

The CAPS Commission will:

- research **evidence-based alternatives to traditional policing**,
- identify **best practices in public safety** globally and
- evaluate the efficacy of such practices for implementation in Bloomington, and will
- make recommendations to the Common Council, the Board of Public Safety, and/or the Mayor or the Mayor's designee on policies and programs that **enhance public safety for all community members**.

Summary

The CAPS Commission was created to enhance public safety for all by researching the experiences of those who have previously been marginalized in our community, and to make recommendations utilizing the results of our research, proven models and best practices. We hope to achieve this goal in three ways:

1. By welcoming speakers from our community and policy experts to inform and educate us on important issues,
2. By listening to marginalized people in our community in our research and amplifying their voices in our recommendations,
3. Most importantly, we hope to achieve this goal by making participation in our community's civic process more equally accessible to every member of our community.

Work Completed by Commission as a Whole

- Foundational and Governance Policies
- Speakers to our Commission
 - Chris Richardson, Support Team Assisted Response (STAR), Denver, CO
 - Alex Vitale, Professor of Sociology and Coordinator of the Policing and Social Justice Project, Brooklyn College and CUNY-GC
 - Jada Bee, Anti-Racism Speaker, Black Lives Matter, Bloomington
 - Nick Voyles, Executive Director, Indiana Recovery Alliance
- 21-02 Resolution Condemning Islamophobia and Anti-Muslim Violence
- 22-01 Resolution Condemning Antisemitism and Anti-Jewish Violence

Work Completed in Committees

- Conflict Resolution
- Alternatives to Policing and Crisis Response
- Reparations and Atonement
- Housing
- Research

Recommendations

- **Inclusive quorum rules** - Work to change the State law's mandating in-person quorum for all commission/committee meetings which discriminates against disabled and other marginalized commissioners who can only attend meetings online
- **Cost assistance** - Create a budget for any city commission members who lack access to the following items needed to carry out their duties: childcare, technology and research materials
- **Transportation** – Parking should be made available to all commission members in the main city lot; Bloomington Transit should be encouraged to add an hourly stop at city hall going in both directions to/from bus terminal

THANK YOU.

Questions?



--	--	--

2022 Annual Report

Community Advisory on Public Safety Commission (CAPS)

City of Bloomington, Indiana

The Commission

The CAPS Commission’s goal is to increase the safety of all Bloomington community members, especially those often marginalized due to race, disability, gender, sexual identity, and/or sexual orientation.

The Commission will perform research and gather data on the perceptions and preferences about public safety from community members, with specific focus on data gathered from minority community members, individuals who are disabled, and other often marginalized community members.

The CAPS Commission will research evidence-based alternatives to traditional policing, identify best practices in public safety globally and evaluate the efficacy of such practices for implementation in Bloomington, and will make recommendations to the Common Council, the Board of Public Safety, and/or the Mayor or the Mayor’s designee on policies and programs that enhance public safety for all community members.

The CAPS Commission will be composed of 11 voting members appointed by the Common Council. Each member shall have one vote and shall serve without compensation. The Commission will meet one time each month.

Statutory Authority: [Ordinance 20-20](#)

Who We Are

2022 Members: Commissioner Kamala Brown-Sparks (Co-Chair, Feb-May), Commissioner Eliza Carey, Commissioner Shelby Ford, Commissioner Alexander Mann, Commissioner Jason Michálek, Commissioner Renée Miller, Commissioner Nejlâ Routsong (Co-Chair, Feb-May)

--	--	--

2021 Members: Commissioner Kamala Brown-Sparks (Co-Chair), Commissioner Arvind Jagdish, Commissioner Nicole Johnson, Commissioner Alexander Mann, Commissioner Renée Miller (Co-Chair), Commissioner Nejlâ Routsong, Commissioner Jonathan Wunrow

Staff Liaisons: Stephen Lucas, Abbi Knipstine, Rebecca Boustani (retired)

Summary

The CAPS Commission was created to enhance public safety for all by researching the experiences of those who have previously been marginalized in our community, and to make recommendations utilizing the results of our research, proven models and best practices. We hope to achieve this goal in three ways:

1. By welcoming speakers from our community and policy experts to inform and educate us on important issues,
2. By listening to marginalized people in our community in our research and amplifying their voices in our recommendations,
3. Most importantly, we hope to achieve this goal by making participation in our community’s civic process more equally accessible to every member of our community.

Organizational Governance

Before turning to our central mission, we created foundational policies and procedures to ensure the effective functioning of our Commission. First, we adopted Robert’s Rules of Order for meeting policy guidelines. We also quickly created a Conflict Resolution committee to create a fair process for handling disputes between Commissioners.

Next, we created several other committees, which are detailed below, to complete more work with fewer members, as well as to allow us all to specialize in the work that best suits our abilities, interests, and backgrounds. More recently, we chose a three-month rotation of two Co-Chairs to lead the Commission from February 2022 going forward. This allows a more diverse and egalitarian distribution of opportunities and responsibilities for all our members.

--	--	--

Work Completed by Commission as a Whole

Completed Work

- Foundational and Governance Policies created
- Speakers to our Commission
 - Chris Richardson, Denver’s Support Team Assisted Response (STAR) Program
 - Alex Vitale, Professor of Sociology and Coordinator of the Policing and Social Justice Project, Brooklyn College and CUNY-GC
 - Jada Bee, Anti-Racism Speaker, Black Lives Matter, Bloomington
- 21-02 [Resolution Condemning Islamophobia and Anti-Muslim Violence](#)
 - Passed December 9, 2021: 6-0-0
 - Community endorsements: 9
 - Organizational sponsors: 4
- 22-01 [Resolution Condemning Antisemitism and Anti-Jewish Violence](#)
 - Passed March 22, 2022: 8-0-0
 - Community endorsements: 7
 - Organizational sponsors: 4

Current and Upcoming Work

- Speakers to our Commission
 - Nick Voyles, Executive Director, Indiana Recovery Alliance

Work Completed in Committees

- Conflict Resolution
 - *Purpose:* To conduct research and make recommendations on restorative justice-based governance, meeting guidelines and conflict resolution procedures that encourage healthy, safe and equitable methods of communication.
 - *Completed Work:* Referred the mediation of ongoing conflicts to an external body, the Community Justice and Mediation Center. Agreed to follow guidance from Black Lives Matter, Bloomington to use a restorative-justice based model. Discussed restorative justice-based model, sociocracy, or dynamic governance.
 - *Current and Upcoming Work:* Recommend specific procedures to be followed in case of internal conflicts between CAPS members.

--	--	--

- Alternative Policing & Crisis Response
 - *Purpose:* To research best practices and perform community outreach to make specific policy recommendations regarding alternative policing and public safety methods which will reduce crime, costs and injustice.
 - *Completed Work:* Research has been conducted on the Denver STAR program and the Ithaca model.
 - *Current and Upcoming Work:* Conduct community outreach, especially with members who are the most marginalized by current practices of policing and crisis response. Consult with the Bloomington Police, EMS and Fire Departments. Evaluate models for best practice. Recommend specific alternative policing models.
- Reparations & Atonement
 - *Purpose:* To improve public safety by promoting truthful narratives of history, current social justice outcomes and stronger community trust among previously marginalized people of Bloomington.
 - *Completed Work:* Conducted research on existing racial inequities using quantitative public safety-related indicators, including public health and criminal justice outcomes. Established communication with the Monroe County History Center for the purpose of conducting future research and/or outreach on racial history.
 - Communicated with Mayor Hamilton regarding the Mayors Organized for Reparations and Equity (MORE) coalition and urged him to join.
 - *Current and Upcoming Work:* Preparing Resolution 22-02 Public Safety Response to Religious Violence to address the public safety needs highlighted in CAPS Resolutions 21-02 and 22-01.
- Housing
 - *Purpose:* To evaluate the impact of the lack of access to safe and affordable housing on public safety in Bloomington, particularly the impact on marginalized community members; and to make policy recommendations to effectively address lack of housing as a public safety concern.
 - *Completed Work:* Decided to focus on three areas of focus, after first identifying the scope and nature of the problem: 1) Urgent actions to address the symptoms of the problem, 2) Systemic solutions to the problem, 3) Criminalization of poverty and the unhoused.
 - *Current and Upcoming Work:* Best practices to research include city-led social housing programs, housing first programs, sustainable funding sources and stakeholder-led governance for housing policy. Community outreach plans may include consulting with: Monroe County United Way, other local non-profit providers of services to the unhoused members of

--	--	--

our community, CDFI-Friendly Bloomington, and the Office of Economic and Sustainable Development (ESD) to identify greatest gaps and areas of need.

- Research
 - *Purpose:* To research and gather data from minority community members, as well as individuals who are disabled and otherwise marginalized. We recognize that many voices have been left out of important government conversations. The mission of this Committee is to bring those voices to light.
 - *Completed Work:* In partnership with the IU School of Social Work, we gathered critical information on the meaning of public safety for those in significant segments of our community. Primary concerns found within the community survey pertained to the following: financial security; housing; law enforcement responses; regulation and availability of community spaces; mental health resources and substance use response; and harm reduction. During this segment of the research committee’s work, 40 stakeholders were interviewed—each one’s identity will remain anonymous. Please see Appendix 1 for elaboration on this critical research.
 - *Current and Upcoming Work:* *In addition to the recommendation in our appended report, our committee recommends further collaboration of the CAPS commission towards shared efforts of other commissions, Council members, and any other entities working to address the safety concerns we've highlighted thus far. Additionally, as our continued research gives voice to segments of our community that have been historically neglected, we call upon the council as our appointing entity to address the issues our findings reveal.*

Additional Recommendations

The CAPS Commission strongly believes that ensuring equal access to our city’s governance process is the surest and most sustainable way to achieve safer, more just and more peaceful communities by enabling those who are the most marginalized in our city to shape our policies themselves. As our commission is composed mainly of marginalized members of our community, we feel that the CAPS Commission is well-positioned to inform the City on how it might include a wider and more egalitarian swath of Bloomington residents in its civic endeavors, including its commissions.

--	--	--

1. Commission members who are unable to attend in-person meetings due to a recognized medical disability should have their online attendance in the meetings count toward achieving the majority quorum required for the meetings to take place. Any commission tasked with serving the disabled communities specifically, such as ours, is structurally discriminated against by the current policy, which only counts in-person attendance for achieving required quorums, regardless of the ability status of online commissioners. CAPS has been forced to cancel 4-5 monthly committee meetings due to this requirement in 2022 alone, which we see as a major structural challenge in effective functioning associated with having a higher number of disabled Commissioners due to our Commission's focus.
2. Several of our members are unable to pay for the costs associated with service to the Commission, due to the widespread discrimination against marginalized communities in our socioeconomic systems. We should be clear that we are making these recommendations not in self-interest, but in the interest of removing barriers to entry for other marginalized people in our city's civic process. Since not all city commissions have equal needs, we suggest setting up one fund in each area for all Commissions to share which would be controlled by the City and adjusted each year as needed.
 - a. A childcare budget should be made available for Commission members who are unable to access the needed childcare to perform their required duties, such as attend meetings. The city might also provide childcare services on-site to fulfill this need.
 - b. A budget for access to needed technology and internet services for online meetings, especially for those who are unable to attend meetings in person due to disability.
 - c. A budget for conducting research should be provided to all commissions to accommodate any members who may not have the personal funds needed to educate themselves on their commission's issues, especially those commissions specifically tasked with conducting research on existing models and best practices, such as ours. Research funds would be specifically used to purchase or access academic or other educational materials which require funds for access, such as books, scholarly articles or paywalled news articles which are not accessible by the public library.
3. Transportation is an important issue for access to official Commission and committee meetings.
 - a. Parking in the city lot should be made accessible through passes or another way to all commission members attending commission and committee meetings, as there often is not adequate parking available between the hours of 9-5 for non-city staff. If this is not possible due to

--	--	--

scarcity of parking spots, then a parking offset fund should be established for Commission members to access to offset their parking expenses incurred during official meeting times.

- b. Bloomington Transit should be encouraged to place more bus stops at or near city hall to ensure equal access to our city's governance process. Currently, the closest stops for leaving city hall are several blocks away, which can be a challenge especially for the elderly and/or disabled.

Safety Interview Research Findings

Opportunities for Increasing Safety in Our Community

Research Committee
Community Advisory on Public Safety
Commission

Mission and Purpose

Research Committee's Mission

As the research committee, we hope to gather data from minority community members, individuals who are disabled, and other often marginalized community members. In partnership with the IU School of Social Work, we gathered critical information on what public safety means within this community. Primary concerns found within the community survey pertained to financial security, housing, law enforcement responses, regulation and availability of community spaces, mental health resources & substance use response and harm reduction. We recognize that many voices have been left out of important government conversations. The mission of this Committee is to bring those voices to light. During this segment of the research committee's work 40 stakeholders were interviewed. Each one's identity will remain anonymous.

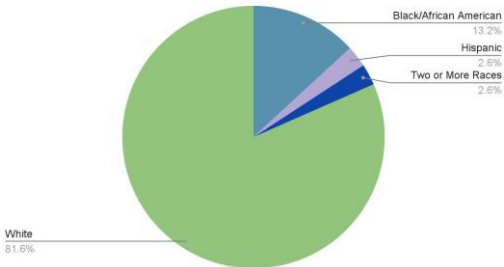
Mission and Purpose

Research Committee's Purpose

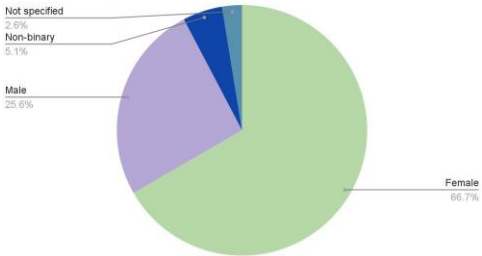
With the research presented today, we hope that other CAPS commission committees can better understand what community members are saying about safety. We also hope this can start a dialogue with the commission as a whole and other government bodies in discussing steps to address these concerns. We as the research committee are dedicated to serving and helping our community in having a voice to communicate their needs. We as the research committee will do so to the best of our abilities.

Demographics

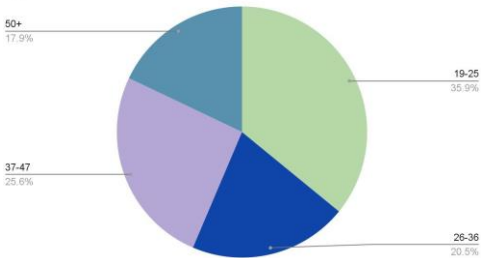
Race



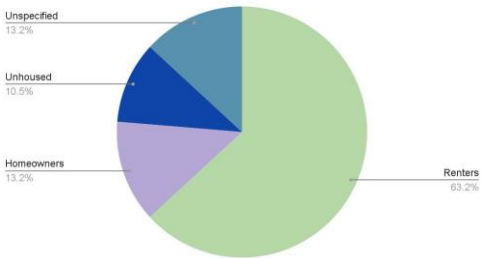
Gender Identity



Age



Housing Status



Safety Concerns Identified

Financial Security

Housing Security

Law Enforcement Responses

Regulation and availability of community spaces

Mental health resources

Substance use responses and harm reduction

Financial Security

Food insecurity

Job opportunity

Low wages

Affordable healthcare

Limited affordable housing options

Financial Security

- Respondent 26: “Do I have affordable housing? No.”
- Respondent 27: They mention that financial security is one of their top challenges. They are sleeping out on the street with all of their belongings in a plastic bag

Housing Security

Transitional housing

Shelters

Barriers to housing: Cost, availability of affordable appropriate options, felonies, lack of credit, high rent deposits, inadequate income

Housing Security

- Respondent #3: Their housing is only affordable because they have a two income household. This suggests that we need more affordable housing options for single earner households
- Respondent #6: "I think more affordable housing would help with the overall safety of the community."
- Respondent #10: The community needs more housing for low to moderate income individuals and families; transitional housing units; treatment facilities for substance use disorder and mental health needs (both residential and outpatient)

Police Interactions

Fear of police officers

Officers were reportedly friendly to some, but were ineffective at addressing the safety issue

Law enforcement responses to the public

- Respondent 9 had called the police in attempt to prevent their boyfriend from taking their child from the parents home where the child was staying at the time. The boyfriend left before police became involved but the caller felt they **like the officers took the statement seriously although said they never followed up.**
- Respondent 28 called the police in 2008 when their home was broken into. They **felt that the police were not incredibly helpful**, but acknowledged that there wasn't much for them to do since the person only stole loose change and some money. Respondent took officers advice in getting a security system.

Law enforcement responses to the public

- Respondent 7: Reports fearful of the police. “I wish I had another choice other than calling the police. That is the only choice I have. **I would be afraid to be harmed or seen as a criminal.**”
- Respondent #8: “One police department, not enough first responders for a town this big.”
- One respondent did not want to be on record when they said, “just have the police get out of the way.”

Additional Safety Concerns

Regulation and availability of community spaces

- Respondent 38: Expressed desire for “**community living spaces where we could be self supporting of each other.**”
- Respondent 15: Advocated for better **separation of the campus community by campus police** so that “the Bloomington non-college community, [has] plenty of **safe places to go outside for children and families.**”

Structural limitations

- Respondent 28: Communicated a desire for “more accessible **public bathrooms in the city that can be used by anyone**” with an emphasis on people experiencing homelessness
- Respondent 38: Expressed **their biggest issue is just “finding a place to sleep”**

Accessibility

- Respondent 11: The participant stated that one of the biggest challenges to their safety are the sidewalks around Bloomington. The conditions of the sidewalks make it challenging for them to walk around downtown feeling safe. **Already having balance issues, they feels forced to use their cane in town, but it is still hard to use it with all of the uneven surfaces.** They stated that “the sidewalks are just horrible, you’d think that Bloomington would have more pride than to let them get this bad.”
- Respondent 13: Another identified challenge was mental health and feeling of safety involving the **stigma associated with dementia and being able to fully utilize the space of Bloomington.** They stated that, “It seems that people have less kindness and wanting to help others, I fear that if I get turned around or am taking longer to find the right words that I will be criticized, treated badly, and not assisted.” **They do not like the usual difference in treatment they received after someone finds out that they are living with dementia.**

Mental Health Resources

- Respondent 2: Spoke about difficulty accessing health services – specifically “health and mental health providers, who are often **booked out for up to a year in advance.**”
- Respondent 9: Spoke about domestic abuse and lack of resources: “**Poor mental health [resources] makes them lack motivation to take the steps they feel are necessary** to leave their child’s father.

Substance use responses and harm reduction

- Respondent 38 reported “I was a victim of a violent crime and I was **taken to jail because they found drugs on me. So I didn’t get help for being a victim and was harmed.**”
- Respondent 9 said they **have a past with substance abuse so do not trust the police to help them if they are in a dangerous situation.**

Research Committee Recommendations

Continue to **gather input from marginalized community members.**

While we have respondents represented from diverse communities in our surveys we believe that **we still need to hear more from underrepresented community members.**

Specifically, **we are missing voices from Asian American and Pacific Islander communities.** Also, we believe **more focused research on accessibility and the needs of community members with disabilities** should be conducted. We note and recommend having two of our CAPS seats filled by someone in the AAPI and Indigenous communities and feel that would be appropriate.

Focus groups could be helpful to gain a deeper and more complete understanding of how to increase safety in Bloomington.

Alternative approaches to safety that extend beyond policing should be explored with community members in order to **find more anti-oppressive, anti-racist and effective strategies.**

Education should be provided to elected and governmental officials, and community members on these alternatives

UTILITY NOTES

- 1) ALL PROJECTS WILL REQUIRE A PRE-CONSTRUCTION MEETING WITH THE CITY OF BLOOMINGTON UTILITIES PRIOR TO THE START OF CONSTRUCTION. THE CONTRACTOR AND/OR DEVELOPER MUST CONTACT THE UTILITIES TECHNICIAN AT (812) 349-3633 TO SCHEDULE THE MEETING.
- 2) CONTRACTOR SHALL NOTIFY THE CITY OF BLOOMINGTON UTILITIES ENGINEERING DEPARTMENT ONE (1) WORKING DAY PRIOR TO CONSTRUCTION OF ANY WATER OR SANITARY SEWER UTILITY WORK. A CBU INSPECTOR MUST HAVE NOTICE SO WORK CAN BE INSPECTED, DOCUMENTED, AND A PROPER AS-BUILT MADE. WHEN A CONTRACTOR WORKS ON WEEKENDS, A CBU DESIGNATED HOLIDAY, OR BEYOND NORMAL CBU WORK HOURS, THE CONTRACTOR WILL PAY FOR THE INSPECTOR'S OVERTIME FOR CBU WORK HOURS AND HOLIDAY INFORMATION, PLEASE CONTACT THE CITY OF BLOOMINGTON UTILITIES ENGINEERING DEPARTMENT AT (812)349-3660.
- 3) SEE SPECIFICATIONS FOR SIZES OF WATER SERVICE LINES AND SEWER LATERALS NOT SPECIFICALLY NOTED ON THE PLANS.
- 4) MS-4 IF SHOWN ON THE PLANS, MINIMUM SEWER ELEVATION, IT INDICATES THE LOWEST FLOOR ELEVATION THAT WILL ALLOW GRAVITY SEWER SERVICE WITHOUT A SPECIAL BACKWATER VALVE. ANY FLOOR ELEVATION THAT WILL BE SERVED BY GRAVITY SEWER MUST BE ABOVE THE RIM ELEVATION OF THE UPSTREAM SANITARY MANHOLE. IF NOT A BACKWATER VALVE MUST BE INSTALLED ACCORDING TO SEC. 400(A) OF THE UNIFORM PLUMBING CODE. SEE SPECIFICATIONS PACKET FOR MORE DETAIL.
- 5) ON ALL EXISTING SANITARY MAINS, WYES SHALL BE CUT AND SLEEVED IN PLACE BY CITY OF BLOOMINGTON UTILITIES PERSONNEL WITH CITY OF BLOOMINGTON UTILITIES FURNISHING ALL MATERIAL, EQUIPMENT, AND LABOR NECESSARY FOR INSTALLATION. DEVELOPER SHALL PROVIDE ALL NECESSARY EXCAVATION, SHORING, BACKFILL, AND SURFACE REPAIR. PLEASE CONTACT NANCY AXSON AT (812) 349-3689 FOR MORE INFORMATION.
- 6) WHEN CONNECTING A NEW PIPE TO AN EXISTING MANHOLE, THE MANHOLE SHALL BE CORE-DRILLED. PIPE SHALL BE CONNECTED TO THE MANHOLE BY EITHER A FLEXIBLE BOOT KOP-IN-SEAL, 1 OR 2 FLEXIBLE CONNECTOR OR APPROVED EQUAL TABLE AND TROUGH SHALL BE MODIFIED AS NECESSARY TO DIRECT THE FLOW FROM THE NEW PIPE. INVERT OF CONNECTION SHALL BE NO MORE THAN ONE FOOT HIGHER THAN THE INVERT OUT FOR THIS STRUCTURE.
- 7) IN ACCORDANCE WITH SECTION 4.5.2.1.5.1. OF THE CBU CONSTRUCTION SPECIFICATIONS ALL SEWER LATERALS SHALL HAVE A CLEAN-OUT AT LEAST EVERY 90 FEET. ALL CLEAN-OUTS, WHETHER IN GRASSY AREAS OR IN PAVEMENT, SHALL BE SUB-SURFACE AND PROTECTED BY A SUITABLE METAL CASTING SUCH AS EAST JORDAN CATALOGUE NO. 2975 OR NEENAH CATALOGUE NO. R-1074-A. IN GRASSY AREAS, THE CASTING SHALL BE PROVIDED WITH A CIRCULAR CONCRETE COLLAR FLUSH WITH THE TOP OF THE CASTING AND THE GROUND SURFACE. THE COLLAR SHALL BE MINIMUM 4" THICK AND SHALL EXTEND AT LEAST 8" BEYOND THE OUTSIDE OF THE CASTING ON ALL SIDES. IN PAVEMENT, THE TOP OF THE CASTING SHALL BE FLUSH WITH THE SURROUNDING PAVEMENT. TOP OF CLEAN-OUT SHALL BE NO MORE THAN 3" BELOW THE TOP OF THE CASTING. A #10 INSULATED SOLID COPPER LOCATOR WIRE SHALL BE WRAPPED AROUND ALL NON-METALLIC PIPES SO THAT ONE REVOLUTION IS MADE AT LEAST EVERY PIPE JOINT. SPLICES ARE TO BE MADE WITH AN APPROVED CONNECTOR, AND ARE TO BE SUITABLY PROTECTED AGAINST CORROSION. THE WIRE IS TO BE BROUGHT TO THE SURFACE WITH A CLEAN-OUT IN A CASTING. ALSO SEE THE CBU CONSTRUCTION SPECIFICATIONS FOR THE "STANDARD SANITARY LATERAL CLEAN-OUT DETAIL #19".
- 8) WHEREVER C900 PIPE IS USED FOR SEWER, ALL WYES SHALL BE HARCO, SIZED FOR C900 ON THE RUN AND SDR-35 ON THE BRANCH. TRANSITION FROM C900 TO SDR-35 PIPE SHALL BE MADE BY USE OF A HARCO C900 TO SDR-35 ADAPTER WYES. ALL D.I.P. USED FOR SANITARY SEWER SHALL HAVE CERAMIC EPOXY LINING, MINIMUM THICKNESS 40 MILS, AND SHALL BE PROTECTO 401, AS MANUFACTURED BY INDOURON PROTECTIVE COATINGS. WYES FOR D.I.P. TO SDR-35 ADAPTER WYES.

UTILITY KEY NOTES

- WATER LINE NOTES (W)
1. DOMESTIC WATER METER IN VAULT
 2. 12" x 6" TAPPING VALVE AND SADDLE
 3. POST INDICATOR VALVE
 4. FIRE DEPARTMENT CONNECTION
 5. RESET EXISTING MAIN HOLE CASTING
 6. EXISTING 30" STEEL CASING, DO NOT DISTURB
 7. SEE PLUMBING PLAN FOR CONTINUATION OF WATER AND FIRE
- SANITARY SEWER NOTES (S)
1. 8" SANITARY LINE FROM BUILDING. SEE PLUMBING PLAN.
 2. PVC SDR 35 SANITARY CLEANOUT PER CBU STANDARD DETAIL 19 (SEE DETAIL ON DETAILS SHEET).
 3. SANITARY MAN HOLE. SEE DETAIL
- STORM SEWER NOTES (D)
1. EXISTING STRUCTURE AND PVC PIPE SHALL REMAIN
 2. 12" INSERT A TEE CONNECTION INTO EXISTING CMP PIPE CUT EXISTING CMP PIPE FOR 12" INSERT A TEE. INSTALL PER MANUFACTURERS REQUIREMENTS.
 3. 8" ROOF DRAIN PIPE. SEE PLUMBING PLAN FOR CONTINUATION.
 4. GRAVEL FRENCH DRAIN WITH UNDERDRAIN. SEE DETAIL SHEET
 5. 6" PIPE FROM FLOOR DRAIN. SEE PLUMBING PLAN FOR CONTINUATION.
 6. FLOOR DRAIN. SEE PLUMBING PLAN
 7. 12" PIPE FROM GARAGE DRAINS. SEE PLUMBING PLAN FOR CONTINUATION
 8. OIL WATER SEPARATOR STRIEM MODEL # 05100.
 9. CONTECH CMP DETENTION SYSTEM. 3 LENGTHS OF 36" CMP. CONTRACTOR SHALL PROVIDE COMPLETE SHOP DRAWINGS FOR THE SYSTEM
 10. ADJUST CONCRETE STORM LID TO FINISH GRADE
 11. CONNECT EXISTING STORM PIPE TO BOX CULVERT. CORE AND REMOVE BLOCKS AS NECESSARY AND NEW PIPE GROUT IN PLACE.
 12. FIELD VERIFY CONDITION OF BOX CULVERT FOR INSTALLATION OF STR USE. REMOVE EXISTING CULVERT BLOCKS AND INSTALL PREFABRICATED 3 SIZED CONCRETE STRUCTURE OVER EXISTING CULVERT OPENING. CONTRACTOR SHALL PROVIDE CERTIFIED SHOP DRAWINGS FOR STRUCTURE.
- ELECTRIC NOTES (E)
1. EXISTING ELECTRICAL SPLICE BOX SHALL REMAIN. RESET IN NEW SIDEWALK. COORDINATE WITH DUKE
 2. RELOCATED ELECTRICAL LINE BY DUKE ENERGY. COORDINATE RELOCATION WITH DUKE.
 3. EXISTING ELECTRICAL LINE LOCATION. LINE WILL BE RELOCATED BY DUKE. COORDINATE WITH DUKE ENERGY.
 4. NEW LARGE DUKE PREFABRICATED PIT PAD BY CONTRACTOR. COORDINATE WITH DUKE
 5. PVC CONDUITS BY SITE CONTRACTOR FOR DUKE POWER LINE FEEDS. COORDINATE WITH ELECTRICAL PLANS.
- PAVEMENT (P)
1. ASPHALT PATCH IN ALLEY AFTER UTILITY WORK IS COMPLETE
 2. REINSTALL EXISTING SIGN AT COMPLETION OF PROJECT
- GAZ
1. ADJUST EXISTING GAS VALVE TO FINISH GRADE. SEE GRADING PLAN

UTILITY CONTACTS

AT&T (Phone) Brent McCabe - (812) 334-4521
4517 E. Indiana Bell Ct.
P.O. Box 56
Bloomington, Indiana 47408
bmi1792@att.com

COMCAST (Cable) Scott Cripe (812) 322-9612
2450 S. Henderson St.
Bloomington, IN 47401
scott_cripe@cable.comcast.com

UDW REMC 812-384-4446
1466 West State Road 54
Bloomfield, IN 47424

VECTREN (Gas) Doug Anderson (812) 330-4031
205 S. Madison
Bloomington, IN 47404
danderson@vectren.com

CITY OF BLOOMINGTON UTILITIES (Water/Sewer) Nancy Axson (812) 349-3689
600 E. Miller Dr.
Bloomington, IN 47402
axsonn@bloomington.in.gov

335 W. 8th Street
335 W. 8th Street
Bloomington, Indiana
47404

Owner
PEERLESS DEVELOPMENT
501 North Clinton Street
Chicago, Illinois 60654

Architect
RATIO
101 South Pennsylvania Street
Indianapolis, Indiana 46204
317-633-0400

Structural Engineer & BRUMLEVE, INC.
LYNCH, HARRISON & BRUMLEVE, INC.
550 Virginia Avenue
Indianapolis, Indiana 46203
317-423-1550

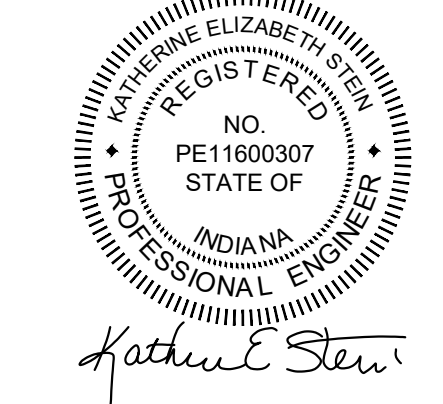
Mechanical / Electrical Engineer
CIRCLE DESIGN GROUP
9229 Delegates Row, Suite 150
Indianapolis, Indiana 46240
317-781-6200

Civil Engineer
SMITH DESIGN GROUP
2755 East Canada Drive, Suite 101
Bloomington, Indiana 47401
812-336-6536

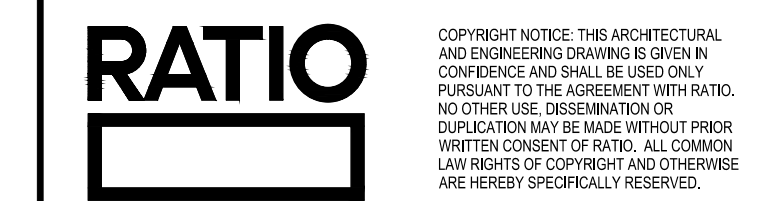
Technology Consultant
ENGINEERING PLUS
9018 Heritage Parkway, Suite 1000
Woodridge, Illinois 60517
630-786-4200

Interior Designer
CLINE DESIGN
125 N. Harrington St.
Raleigh, NC 27603
704-333-7272

04/15/2022

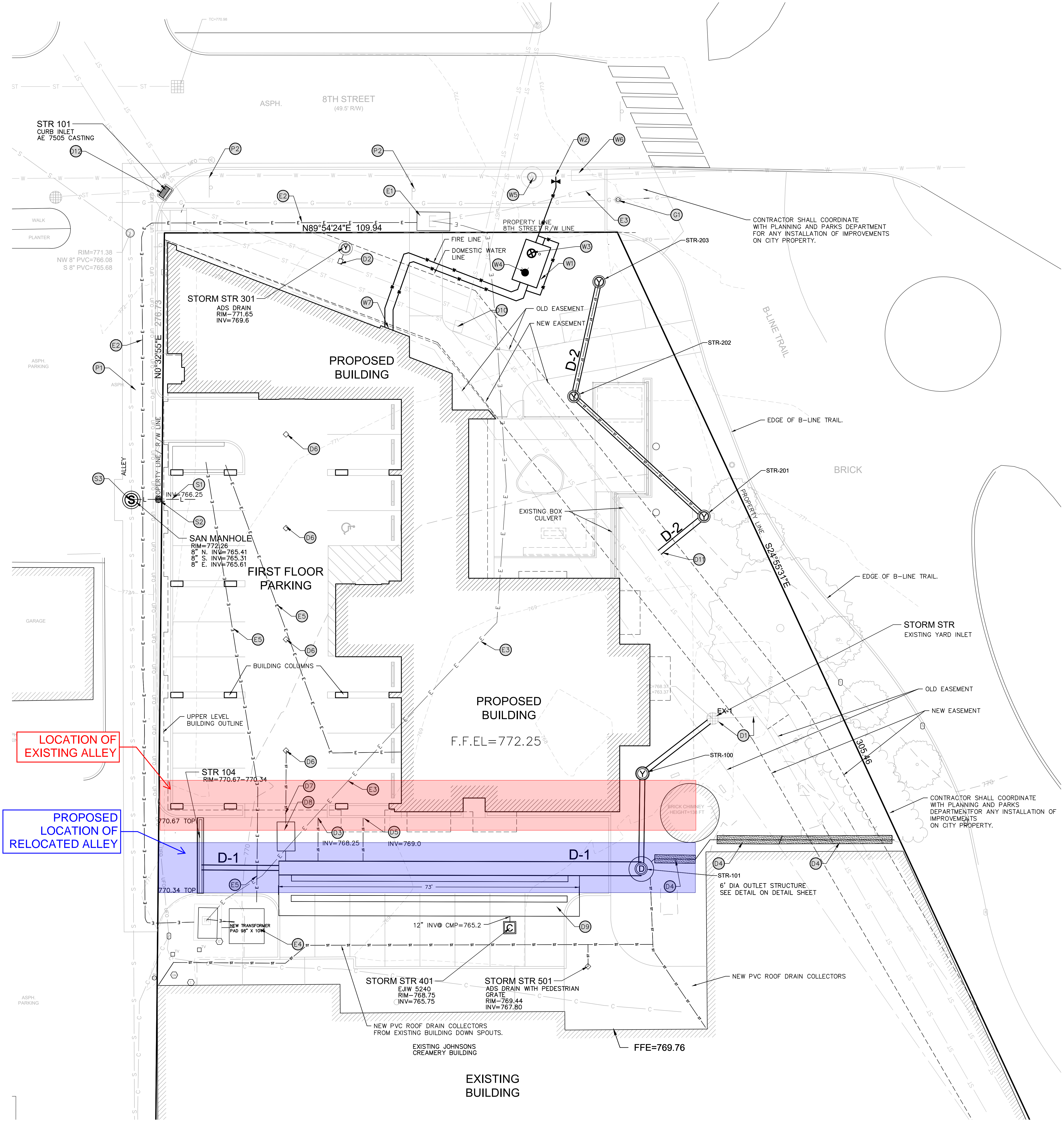


SHEET ISSUE		
1	100% DD	2/3/2022
2	GRADING PERMIT SUBMITTAL	3/10/2022
3	50% CD SET	3/17/2022
4	CBU SUBMISSION	3/23/2022
5	GMP AND PERMIT SET	4/15/2022



PROJECT NO. 21041.000
SHEET TITLE
UTILITY PLAN

SHEET NUMBER
C201



LOCATION OF EXISTING ALLEY

PROPOSED LOCATION OF RELOCATED ALLEY

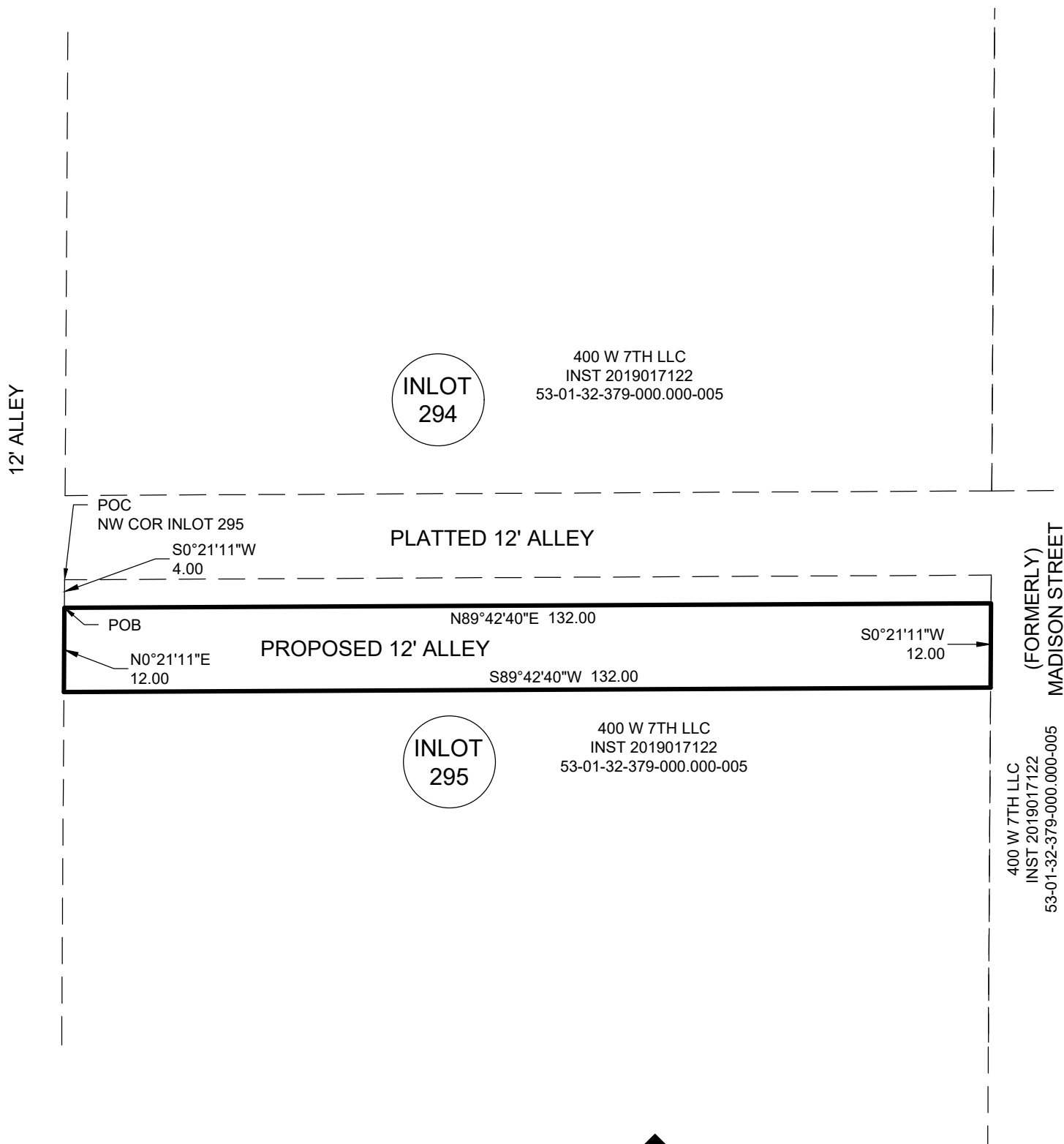
EXHIBIT 'A'

12' ALLEY

LEGAL DESCRIPTION

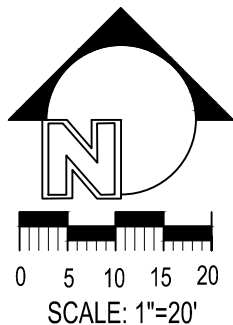
BEING A PART OF INLOT 295 IN THE ORIGINAL PLAT OF THE TOWN OF BLOOMINGTON, AS SHOWN IN THE PLAT THEREOF, RECORDED IN PLAT BOOK A, PAGE 5, IN THE OFFICE OF THE RECORDER OF MONROE COUNTY, INDIANA, DESCRIBED AS FOLLOWS:

COMMENCING AT THE NORTHWEST CORNER OF INLOT 295, THENCE SOUTH 00 DEGREES 21 MINUTES 11 SECONDS WEST (INDIANA STATE PLANE, WEST ZONE) ALONG THE WEST LINE THEREOF 4.00 FEET TO THE POINT OF BEGINNING; THENCE NORTH 89 DEGREES 42 MINUTES 40 SECONDS EAST 132.00 FEET TO THE EAST LINE OF SAID INLOT 295; THENCE ALONG SAID EAST LINE SOUTH 00 DEGREES 21 MINUTES 11 SECONDS WEST 12.00 FEET; THENCE SOUTH 89 DEGREES 42 MINUTES 40 SECONDS WEST 132.00 FEET TO THE AFORESAID WEST LINE OF SAID INLOT 295; THENCE ALONG SAID WEST LINE NORTH 00 DEGREES 21 MINUTES 11 SECONDS EAST TO THE POINT OF BEGINNING, CONTAINING 0.036 ACRES, MORE OR LESS.



NOTE:

THIS EXHIBIT WAS PREPARED BASED UPON DOCUMENTS OBTAINED FROM THE OFFICE OF THE RECORDER OF MONROE COUNTY, AND OTHER SOURCES AND IS NOT INTENDED TO BE REPRESENTED AS A RETRACEMENT OR ORIGINAL BOUNDARY SURVEY, A ROUTE SURVEY OR A SURVEYOR LOCATION REPORT.



SMITH DESIGN GROUP

CIVIL ENGINEERING - LAND SURVEYING
2755 E Canada Dr Suite 101 Bloomington, IN 47401
(812) 336-6536 - smithdginc.com
JOB:6028 DATE:07/20/2022 PAGE: 1/1