



City of Bloomington Common Council

Legislative Packet

Regular Session

19 October 2011

For background material related to Ordinances 11-17 and 11-18, please consult the [Legislative Packet](#) issued in interest of the 05 October 2011 meeting. For background material related to Resolution 11-14, please consult the [Legislative packet](#) issued in interest of 12 October 2011.

Office of the Common Council
P.O. Box 100
401 North Morton Street
Bloomington, Indiana 47402

812.349.3409

council@bloomington.in.gov
<http://www.bloomington.in.gov/council>



Packet Related Material

Memo

Agenda

Calendar

Notices and Agendas:

None

Legislation for Second Reading:

- **Res 11-14** Authorizing a Loan Under the Bloomington Investment Incentive Fund - Re: \$75,000 to ProWinds, Inc. for Inventory and Improvements at 1400 East Third Street

Contact:

Adam Wason at 349-3418 or wasona@bloomington.in.gov

Miah Michaelsen at 349-3418 or michaelm@bloomington.in.gov

Danise Alano-Martin at 349-3418 or alanod@bloomington.in.gov

Please see the [12 October 2011](#) Council Legislative Packet for the associated legislation, supplemental material and summary.

- **Ord 11-18** To Amend Title 15 of the Bloomington Municipal Code Entitled “Vehicles and Traffic” - Re: To Allow Emergency Responders to Operate Various Types of Motor Vehicles on the B-Line, City Parks, and Similar Areas and to Allow Emergency Responders to Operate Off-Road Vehicles on City Streets
 - *Contact: Patty Mulvihill at 349-3426 or mulvihill@bloomington.in.gov*
- **Ord 11-17** To Rezone a 2.2 Acre Property from Residential Single Family (RS) to a Planned Unit Development to Allow a Cooperative Housing Development to be Constructed. - Re: 415 ½ N. Spring Street (Bloomington Cooperative Plots)
 - *Contact: Pat Shay at 349-3524 or shayp@bloomington.in.gov*

Please see the [5 October 2011](#) Council Legislative Packet for the associated legislation, supplemental material and summaries.

Legislation and Background Material for First Reading:

- **Ord 11-19** To Amend Title 15 of the Bloomington Municipal Code Entitled “Vehicles and Traffic” – Re: Angle Parking, No Parking, Limited Parking, Loading Zones, Residential Neighborhood Permit Parking, Accessible Parking, Loading Zones and Mid-Block Crosswalks
 - Memo to the Council from Susie Johnson, Director of Public Works; Maps

Contact:
Susie Johnson at 349-3411 or johnsons@bloomington.in.gov

Minutes from Regular Session:

None

Memo

Reminder: Staff/Council Internal Work Session on Friday October 21st

Three Items Ready for Final Action and One Item Ready for Introduction at the Regular Session on Wednesday, October 19th

There are three items ready for final action and one item ready for introduction at the Regular Session next Wednesday. The three items ready for final action include one resolution and two ordinances; the related material and summaries can be found as indicated above. The item ready for introduction is included in this packet and summarized herein.

First Readings

Item One – Ord 11-19 – Amending Title 15 (Vehicles and Traffic)

The item ready for first reading on Wednesday, October 19th is **Ord 11-19** which presents what are expected to be the last amendments to Title 15 (Vehicles and Traffic) for the year. These changes are summarized in the following charts and affect Angle Parking, No Parking, Limited Parking, Loading Zones, Residential Neighborhood Permit Parking, Accessible Parking, Loading Zones and Mid-Block Crosswalks.

**PARKING CONTROLS
(CHAPTER 15.32)**

**SCHEDULE L – ANGLED PARKING
(Section 15.32.030)
(Section 1 of the Ordinance)**

Location	Action and Rationale
<ul style="list-style-type: none">• Walnut and First Alley West of Walnut (North Side) and• Walnut and Gentry (North Side) <i>(Map 7)</i>	<p>This section adds Angled Parking at these two locations in order to increase parking in this area. Public Works had been planning to propose this, but wanted to wait until after the signal improvements were completed. The Traffic Commission considered this at their September, 2010 and January, 2011 meeting. <i>Note that Section 4 of the ordinance removes the current measurements for parallel parking here and changes the hours of enforcement in these blocks.</i></p>

**SCHEDULE M – NO PARKING ZONES
(SECTION 15.32.080)
(Sections 2-3 of the Ordinance)**

Location	Action and Rationale
<ul style="list-style-type: none">• Hawthorne (South of Third Street – East Side) <i>Map 1</i>• Jordan (North of Atwater – East Side) <i>Map 2</i>	<p>These sections extend the No Parking Zone from 35' to 105'</p> <p>These sections also add a 58' No Parking Zone</p> <p>History and Rationale: The extension and addition of these No Parking Zones was brought forward on behalf of the Indiana University Transit as result of the Campus Master Plan (Plan). The Circulation and Parking section of the Plan recommends that Routes A and B have a more direct access to campus rather than merely circulate around it. These parking changes will allow the Route B bus to do so. The changes were recommended by the Traffic Commission at their July, 2011 meeting.</p>

SCHEDULE N – LIMITED PARKING ZONES
(SECTION 15.32.090)
(Sections 4-5 of the Ordinance)

Location	Action and Rationale
<ul style="list-style-type: none">• Fourth Street (Walnut and College – North Side) <i>Map 7</i>• Fourth Street (First Alley West of Walnut to College– South Side) <i>Map 7</i>	<p>These sections shift the hours of enforcement for these 2-hour limited parking zones from 8 a.m. to 5 p.m. Monday through Friday (annotated in the BMC as 2 Hr. [3]) to 5 a.m. to 5 p.m. Monday through Saturday (annotated in the BMC at 2 Hr. [8]) to be consistent with enforcement in adjacent areas. They also reflect the existing limited parking zone on the north side of the block west of the mid-block alley. These changes were considered by the Traffic Commission at their September, 2010 and January, 2011 meetings.</p>
<ul style="list-style-type: none">• College Avenue (Eleventh Street to Railroad Underpass – West Side) <i>Map 3</i>	<p>These sections convert unlimited parking to 2-hour parking from 5 a.m. to 5 p.m. Monday through Saturday at the request of Scholars Inn which, in effect, will replace some of the resident parking with customer parking.</p>

SCHEDULE O – LOADING ZONES
(SECTION 15.32.100)
(Sections 6 - 7 of the Ordinance)

Location	Action and Rationale
<ul style="list-style-type: none">• 100 Block of West Fourth Street (First Space East of Alley – North Side) <i>Map 7</i>	<p>These sections make the existing Loading Zone an angled parking space to conform to the other angled spaces on that end of the block.</p>

SCHEDULE S – ACCESSIBLE PARKING FOR PERSONS WITH PHYSICAL DISABILITIES
(SECTION 15.32.150)
(Section 8 of the Ordinance)

Location	Action and Rationale
<ul style="list-style-type: none">• 350 West 11th Street (First Space East of Driveway – North Side) <i>Map 4</i>	<p>This section adds an Accessible Parking space at the request of the Upland Brewery. This was considered by the Traffic Commission at their July, 2011 meeting.</p>

RESIDENTIAL NEIGHBORHOOD PERMIT PARKING (15.37)
(SECTION 15.37.020)

**Old Northeast Downtown University Proximate
Residential Neighborhood Permit Parking Zone – Zone 4
(Sections 9 - 10 of the Ordinance)**

Location

- East Seventh Street (North Walnut to North Dunn – North/South Side of Street)
Map 5

Action and Rationale

This block is listed as both in the Residential Neighborhood Permit Parking Zone 4 and as a 2-hour limited parking zone (from 8:00 a.m. to 5:00 p.m. on Monday through Friday). Susie Johnson tells me that it has never been treated as being in Zone 4 and that no one residing in that block has ever been granted a parking permit. This change reflects that practice and removes the block from Zone 4.

MISCELLANEOUS TRAFFIC RULES (15.60)
(PEDESTRIANS – SECTION 15.60.050)
(Section 11 of the Ordinance)

Location

The following Crossings Along the B-Line Trail:

- North Fairview Street
- North Rogers Street
- West Eighth Street
- West Seventh Street
- West Sixth Street
- West Kirkwood Avenue Trail
- West Fourth Street
- West Second Street
- West First Street
- West Dodds Street
- West Allen Street

Action and Rationale

This section adds mid-block crosswalks where the B-Line Trail crosses streets from Allen on the south to Fairview on the north.

**NOTICE AND AGENDA
BLOOMINGTON COMMON COUNCIL REGULAR SESSION
7:30 P.M., WEDNESDAY, OCTOBER 19, 2011
COUNCIL CHAMBERS
SHOWERS BUILDING, 401 N. MORTON ST.**

I. ROLL CALL

II. AGENDA SUMMATION

III. APPROVAL OF MINUTES FOR: *None*

IV. REPORTS FROM: (A maximum of twenty minutes is set aside for each part of this section.)

- 1. Councilmembers**
- 2. The Mayor and City Offices**
- 3. Council Committees**
- 4. Public ***

V. APPOINTMENTS TO BOARDS AND COMMISSIONS

VI. LEGISLATION FOR SECOND READING AND RESOLUTIONS

1. Resolution 11-14 Authorizing a Loan Under The Bloomington Investment Incentive Fund- Re: \$75,000 to ProWinds, Inc. for Inventory and Improvements at 1400 East Third Street

Committee Recommendation: Do Pass 8 – 0 – 0

2. Ordinance 11-18 To Amend Title 15 of the Bloomington Municipal Code Entitled “Vehicles and Traffic” - Re: To Allow Emergency Responders to Operate Various Types of Motor Vehicles on the B-Line, City Parks, and Similar Areas and to Allow Emergency Responders to Operate Off-Road Vehicles on City Streets.

Committee Recommendation: Do Pass 8 – 0 – 1

3. Ordinance 11-17 To Rezone a 2.2 Acre Property from Residential Single Family (RS) to a Planned Unit Development to Allow a Cooperative Housing Development to be Constructed. - Re: 415 ½ N. Spring Street (Bloomington Cooperative Plots)

Committee Recommendation: Do Pass 6 – 0 – 2

VII. LEGISLATION FOR FIRST READING

1. Ordinance 11-19 – To Amend Title 15 of the Bloomington Municipal Code Entitled "Vehicles & Traffic" – Re: Angle Parking, No Parking, Limited Parking, Loading Zones, Residential Neighborhood Permit Parking, Accessible Parking, Loading Zones and Mid-Block Crosswalks

VIII. ADDITIONAL PUBLIC COMMENT * (A maximum of twenty-five minutes is set aside for this section.);

IX. COUNCIL SCHEDULE

X. ADJOURNMENT

* Members of the public may speak on matters of community concern not listed on the agenda at one of the two *Reports from the Public* opportunities. Citizens may speak at one of these periods, but not both. Speakers are allowed five minutes; this time allotment may be reduced by the presiding officer if numerous people wish to speak.



**City of Bloomington
Office of the Common Council**

To: Council Members
From: Council Office
Re: Calendar for the Week of 17 October – 22 October 2011

Monday, 17 October 2011

11:45 am Inclusive Recreation Advisory Council, Hooker Room
12:00 pm Bloomington Entertainment and Arts District Advisory Committee, McCloskey
12:00 pm Farmers' Market Advisory Council, Showers Building, Parks Room 250
4:00 pm Metropolitan Planning Organization Policy Committee I-69 Subcommittee, McCloskey
5:30 pm Bicycle & Pedestrian Safety Commission, Hooker Room

Tuesday, 18 October 2011

8:00 am Community Development Block Grant Agency Training, McCloskey
9:00 am Emergency Management Advisory Council, Council Chambers
11:30 am Plan Commission Work Session, Kelly
4:00 pm Board of Public Safety, McCloskey
5:00 pm Community and Family Resources Commission, Council Chambers
5:30 pm Animal Control Commission, McCloskey
5:30 pm Joint Bloomington-Monroe County Deer Task Force, Hooker Room
7:00 pm A Migrant Journey: A Discussion with Mexican Migrant Rights Advocate Jacqueline Garcia Salamanca, Council Chambers

Wednesday, 19 October 2011

1:00 pm Metropolitan Planning Organization Policy Committee I-69 Subcommittee, Hooker Room
5:00 pm Growth Policies Plan Steering Committee, Council Chambers
5:00 pm Bloomington Community Arts Commission, McCloskey
7:30 pm Common Council Regular Session, Council Chambers

Thursday, 20 October 2011

8:00 am Bloomington Housing Authority, 1007 N. Summit, Community Room
1:30 pm Tapp Road Bid Opening, Hooker Room
3:30 pm Bloomington Municipal Facilities Corporation, Dunlap
5:30 pm Board of Zoning Appeals, Council Chambers
7:00 pm Environmental Commission, McCloskey

Friday, 21 October 2011

12:00 pm Council Internal Work Session, Hooker Room
12:00 pm Domestic Violence Task Force, McCloskey

Saturday, 22 October 2011

9:00 am Bloomington Community Farmers' Market, Showers Common, 401 N. Morton

Posted and Distributed: Friday, 14 October 2011

ORDINANCE 11-19

**TO AMEND TITLE 15 OF THE BLOOMINGTON MUNICIPAL CODE
ENTITLED “VEHICLES AND TRAFFIC” -**

Re: Angle Parking, No Parking, Limited Parking, Loading Zones, Residential
Neighborhood Permit Parking, Accessible Parking, Loading Zones and
Mid-Block Crosswalks

WHEREAS, the Traffic Commission has recommended certain changes be made in
Title 15 of Bloomington Municipal Code entitled “Vehicles and
Traffic”;

NOW, THEREFORE, BE IT HEREBY ORDAINED BY THE COMMON COUNCIL
OF THE CITY OF BLOOMINGTON, MONROE COUNTY, INDIANA, THAT:

SECTION 1. Section 15.32.030 - Schedule L (Angle Parking) shall be amended to add
the following:

ANGLE PARKING

Street	From	To	Side of Street
Fourth Street	Walnut Street	1st Alley West of Walnut Street	North
Fourth Street	College Avenue	Gentry Street	North

SECTION 2. Section 15.32.080 - Schedule M (No Parking Zones) shall be amended to
delete the following:

NO PARKING ZONES

Street	From	To	Side of Street	Time of Restrict.
Hawthorne Drive	30' S. of Third St.	Third Street	East	Any Time

SECTION 3. Section 15.32.080 Schedule M (No Parking Zones) shall be amended to
add the following:

NO PARKING ZONES

Street	From	To	Side of Street	Time of Restrict.
Hawthorne Drive	Third Street	105' South of Third Street	East	Any Time
Jordan Avenue	Atwater Avenue	58' North of Atwater Avenue	East	Any Time

SECTION 4. Section 15.32.090 Schedule N (Limited Parking Zones) shall be amended to delete the following:

LIMITED PARKING ZONES

Street	From	To	Side of Street	Limit
Fourth Street	78 feet west of Walnut Street	Walnut Street	North	2 Hr. (3)
Fourth Street	1 st Alley W. of Walnut	College Avenue	South	2 Hr. (3)

SECTION 5. Section 15.32.090 Schedule N (Limited Parking Zones) shall be amended to add the following:

LIMITED PARKING ZONES

Street	From	To	Side of Street	Limit
College Avenue	Eleventh Street	Railroad overpass North of Eleventh Street	West	2 Hr. (8)
Fourth Street	Walnut Street	College Avenue	North	2 Hr. (8)
Fourth Street	1 st Alley West of Walnut Street	College Avenue	South	2 Hr. (8)

SECTION 6. Section 15.32.100 Schedule O (Loading Zones) shall be amended to delete the following:

LOADING ZONES

100 Block of Fourth Street 78' west of Walnut Street to 100' west of Walnut Street on the north side.

SECTION 7. Section 15.32.100 Schedule O (Loading Zones) shall be amended to add the following:

LOADING ZONES

100 Block of West Fourth Street - the first space east of the alley on the north side of Fourth Street

SECTION 8. Section 15.32.150 Schedule S (Accessible Parking for Persons with Physical Disabilities) shall be amended to add the following:

ACCESSIBLE PARKING FOR PERSONS WITH PHYSICAL DISABILITIES

350 West 11th Street – first space east of the driveway on the north side of 11th Street

SECTION 9. Section 15.37.020 entitled “Applicability” shall be amended to delete the following area from Old Northeast Downtown University Proximate Residential Neighborhood Permit Parking Zone (Zone 4):

Street	From	To	Side of Street
East 7 th	North Walnut	North Dunn	North/South

SECTION 10. Section 15.37.020 entitled “Applicability” shall be amended to add the following area to Old Northeast Downtown University Proximate Residential Neighborhood Permit Parking Zone (Zone 4):

Street	From	To	Side of Street
East 7 th Street	North Washington Street	North Dunn Street	North/South

SECTION 11. Section 15.60.050 entitled Pedestrians shall be amended to add the following:

- North Fairview Street @ the B-Line Trail
- North Rogers Street @ the B-Line Trail
- West Eighth Street @ the B-Line Trail
- West Seventh Street @ the B-Line Trail
- West Sixth Street @ the B-Line Trail
- West Kirkwood Avenue @ the B-Line Trail
- West Fourth Street @ the B-Line Trail
- West Second Street @ the B-Line Trail
- West First Street @ the B-Line Trail
- West Dodds Street @ the B-Line Trail
- West Allen Street @ the B-Line Trail

SECTION 12. If any section, sentence or provision of this ordinance, or the application thereof to any person or circumstances shall be declared invalid, such invalidity shall not affect any of the other sections, sentences, provisions, or applications of this ordinance which can be given effect without the invalid provision or application, and to this end the provisions of this ordinance are declared to be severable.

SECTION 13. This ordinance shall be in full force and effect from and after its passage by the Common Council of the City of Bloomington and the approval of the Mayor.

PASSED AND ADOPTED by the Common Council of the City of Bloomington, Monroe County, Indiana, upon this _____ day of _____, 2011.

SUSAN SANDBERG, President
Bloomington Common Council

ATTEST:

REGINA MOORE, Clerk
City of Bloomington

PRESENTED by me to the Mayor of the City of Bloomington, Monroe County, Indiana, upon this _____ day of _____, 2011.

REGINA MOORE, Clerk
City of Bloomington

SIGNED and APPROVED by me upon this _____ day of _____, 2011.

MARK KRUZAN, Mayor
City of Bloomington

SYNOPSIS

This ordinance makes several changes to the Bloomington Municipal Code. This includes angle parking, no parking zones, limited parking zones, loading zones, accessible parking for persons with physical disabilities, residential neighborhood permit parking zones, and pedestrian crosswalks.

To: Common Council
From: Susie Johnson
Re: Ordinance 11-19
Date: September 29, 2011

The following outlines the specific changes proposed to Title 15 of the Municipal Code.

Section 1: This section adds angle parking to 4th Street between Walnut Street and the first alley West of Walnut Street (North Side), and between College Avenue and Gentry Street (North Side). This request was recommended for approval by the Bloomington Traffic Commission at their January meeting.

Section 2: & 3: These sections allow for the removal of parking on Hawthorne Drive and Jordan Avenue to accommodate changes requested by Indiana University Transit which is in the process of improving their 'B' Route per their Circulation and Parking section of the Campus Master Plan. The Master Plan recommends that the A Route and the B Route be rerouted to a more direct in and out of campus route, rather than the current routing which loops completely around the core of campus. This request was recommended for approval by the Bloomington Traffic Commission at their July meeting. (Map 1, 2)

Section 4: These sections remove specific measured distances from the current code to allow angle parking on 4th St. from College to Gentry.

Section 5: This section allows for Monday through Saturday enforcement of limited parking (2 hour) in on 4th St from College to Gentry (the new angled parking) and on College just north of 11th St. to accommodate Scholars Inn, which has begun to see storage parking since the new apartments have been built. This request was recommended for approval by the Bloomington Traffic Commission at their July meeting. (Map 3, 7)

Section 6: This section deletes the current loading zone on 4th St. where the new angled parking is proposed and its measured location from Schedule O. (Map 7)

Section 7: This section adds a new loading zone on 4th St at the same location with a new description of the location reflecting the change to accommodate the angle parking. (Map 7)

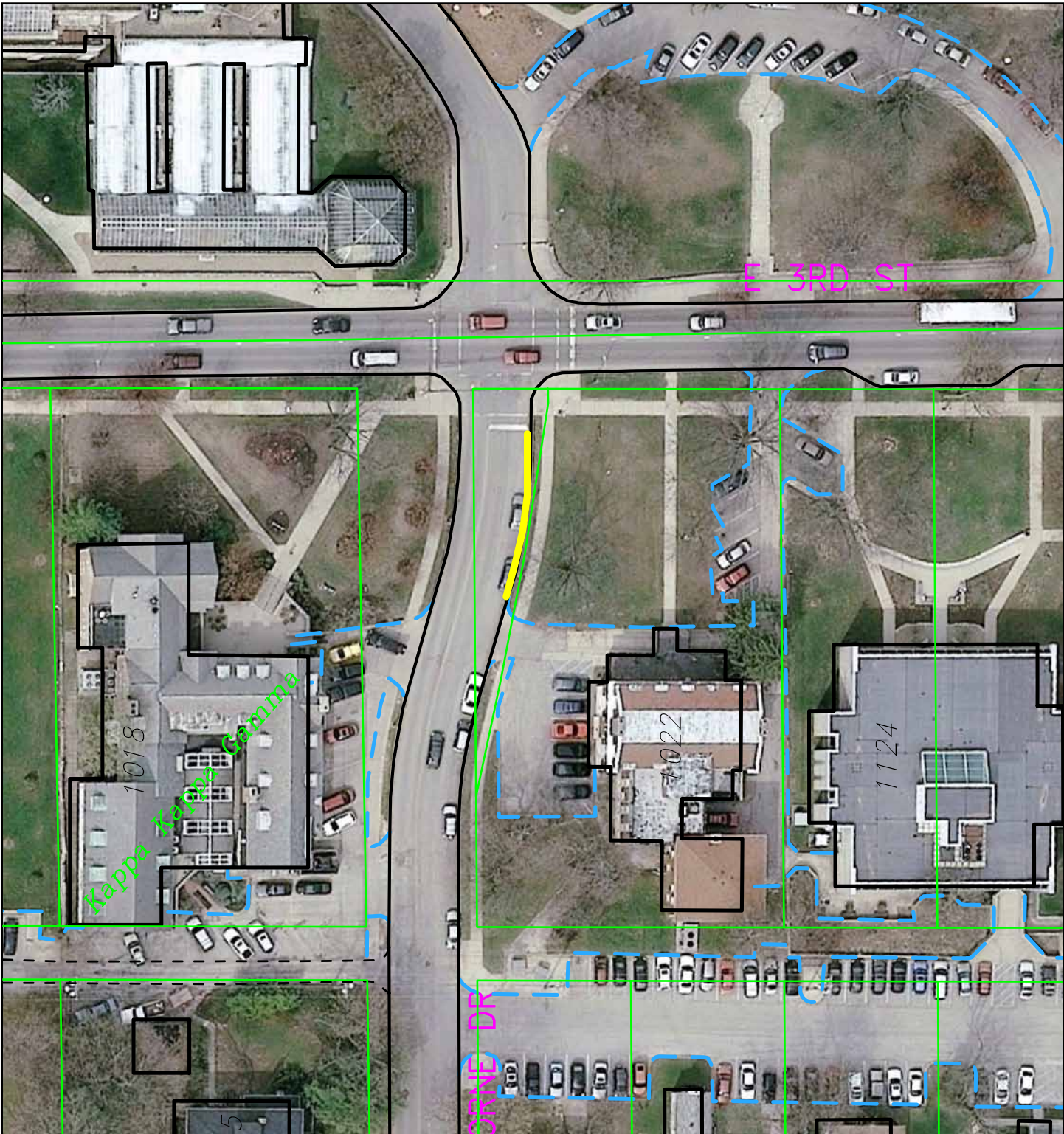
Section 8: This section adds an accessible parking space on 11th Street adjacent to the Upland Brewery per their request and was recommended for approval by the Bloomington Traffic Commission at their July meeting. (Map 4)

Section 9: & 10: These sections correct the limits of the Old Northeast Downtown University Proximate Residential Neighborhood Permit Parking Zone (Zone 4) to **not** include the block of 7th Street between Walnut Street and Washington Street. This is simply a correction to reflect what is listed in Schedule N and how it is currently enforced. (Map 5)

Section 11: This section adds the street crossings along the B-Line Trail to the Bloomington Municipal Code as mid-block crossings for pedestrians. These include; Allen Street, Dodds Street, First Street, Second Street, Fourth Street, Kirkwood Avenue, Sixth Street, Seventh Street, Eighth Street, Rogers Street, and Fairview Street. (Map 6)

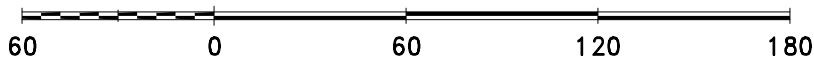
Section 12: Severability clause

Section 13: Effective date



Map 1

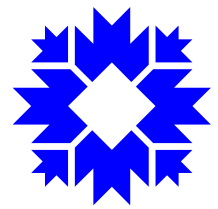
By: wykoffj
28 Sep 11



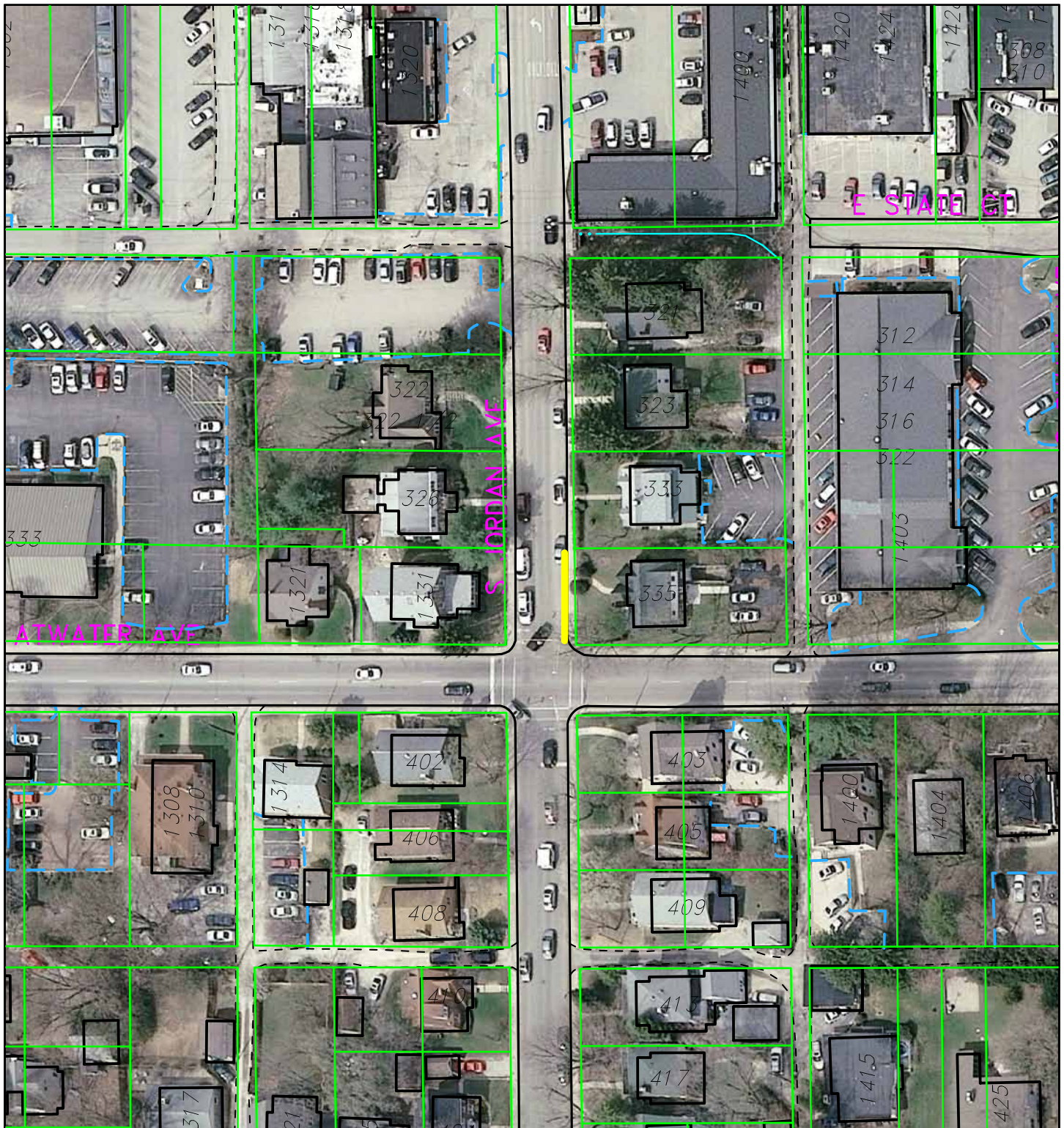
For reference only; map information NOT warranted.



City of Bloomington
Engineering

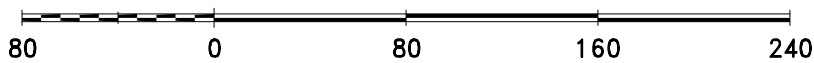


Scale: 1" = 60'



Map 2

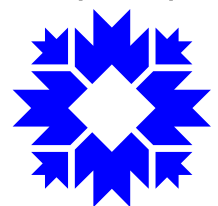
By: wykoffj
29 Sep 11



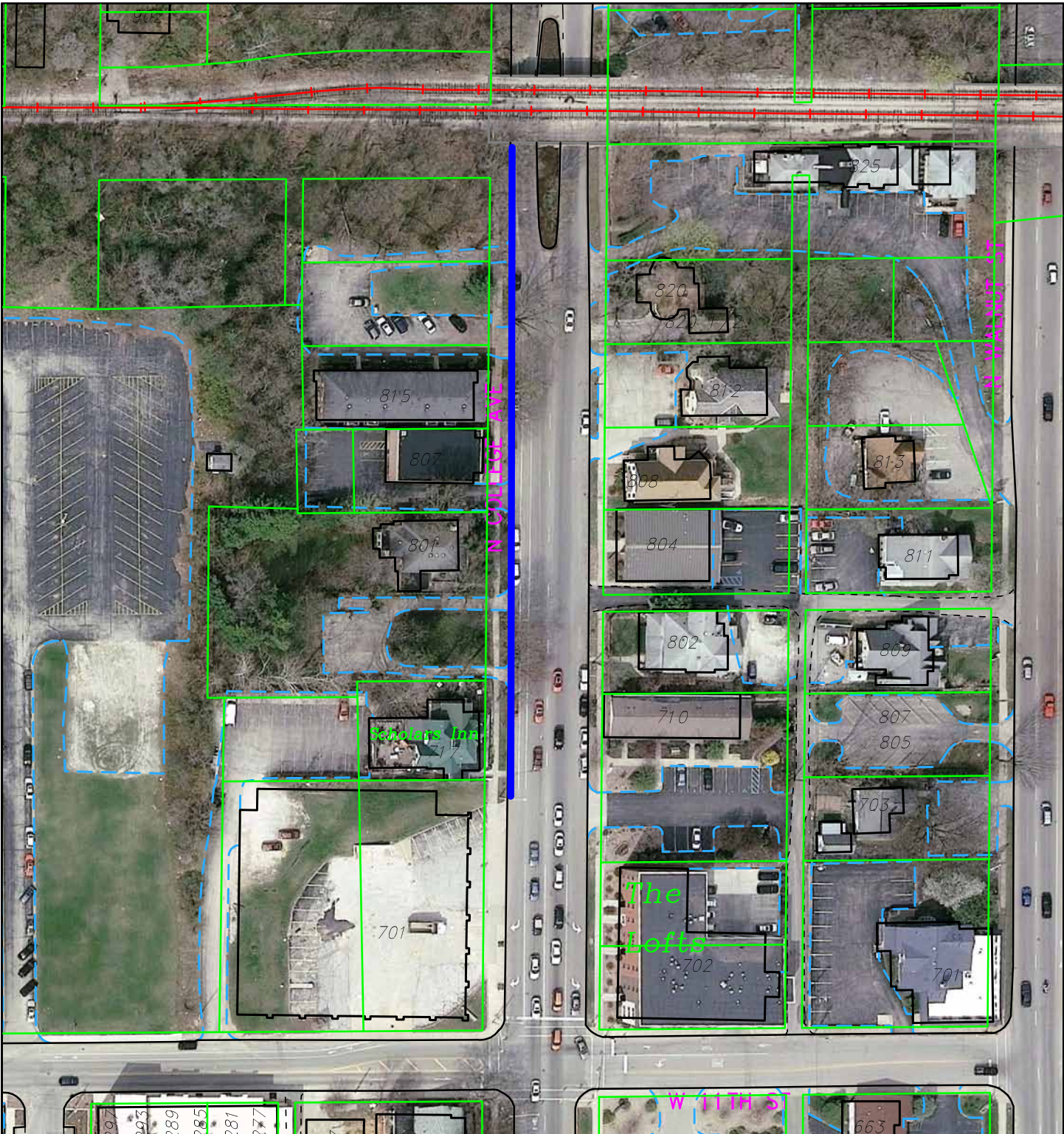
For reference only; map information NOT warranted.



City of Bloomington
Engineering

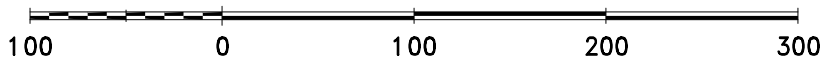


Scale: 1" = 80'



Map 3

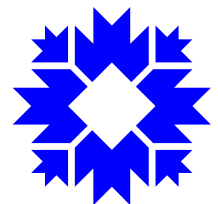
By: wykoffj
29 Sep 11



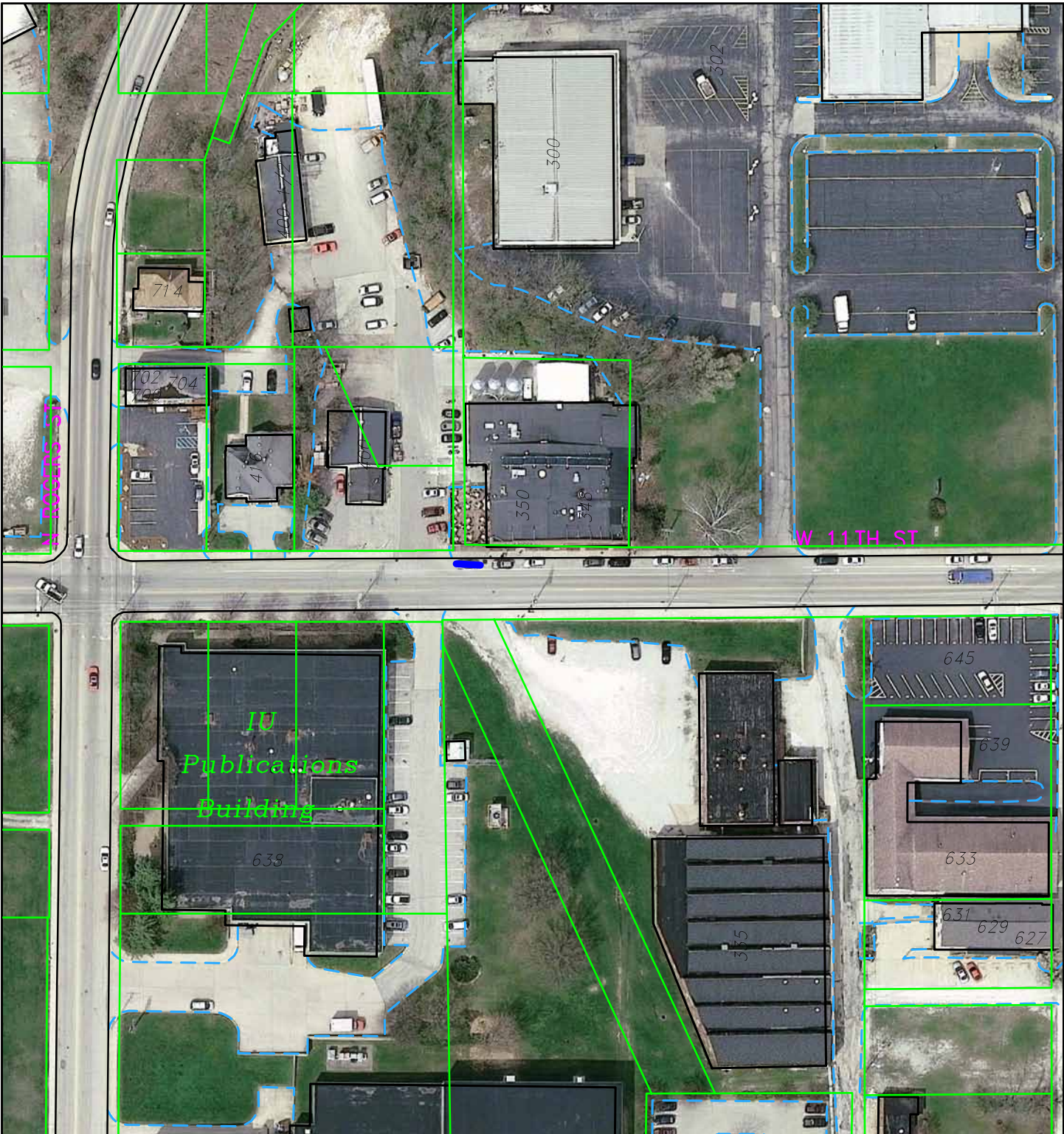
For reference only; map information NOT warranted.



City of Bloomington
Engineering

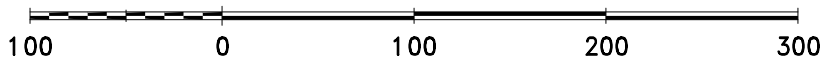


Scale: 1" = 100'

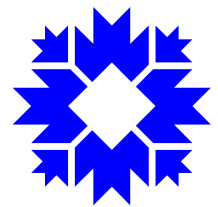


Map 4

By: wykoffj
29 Sep 11

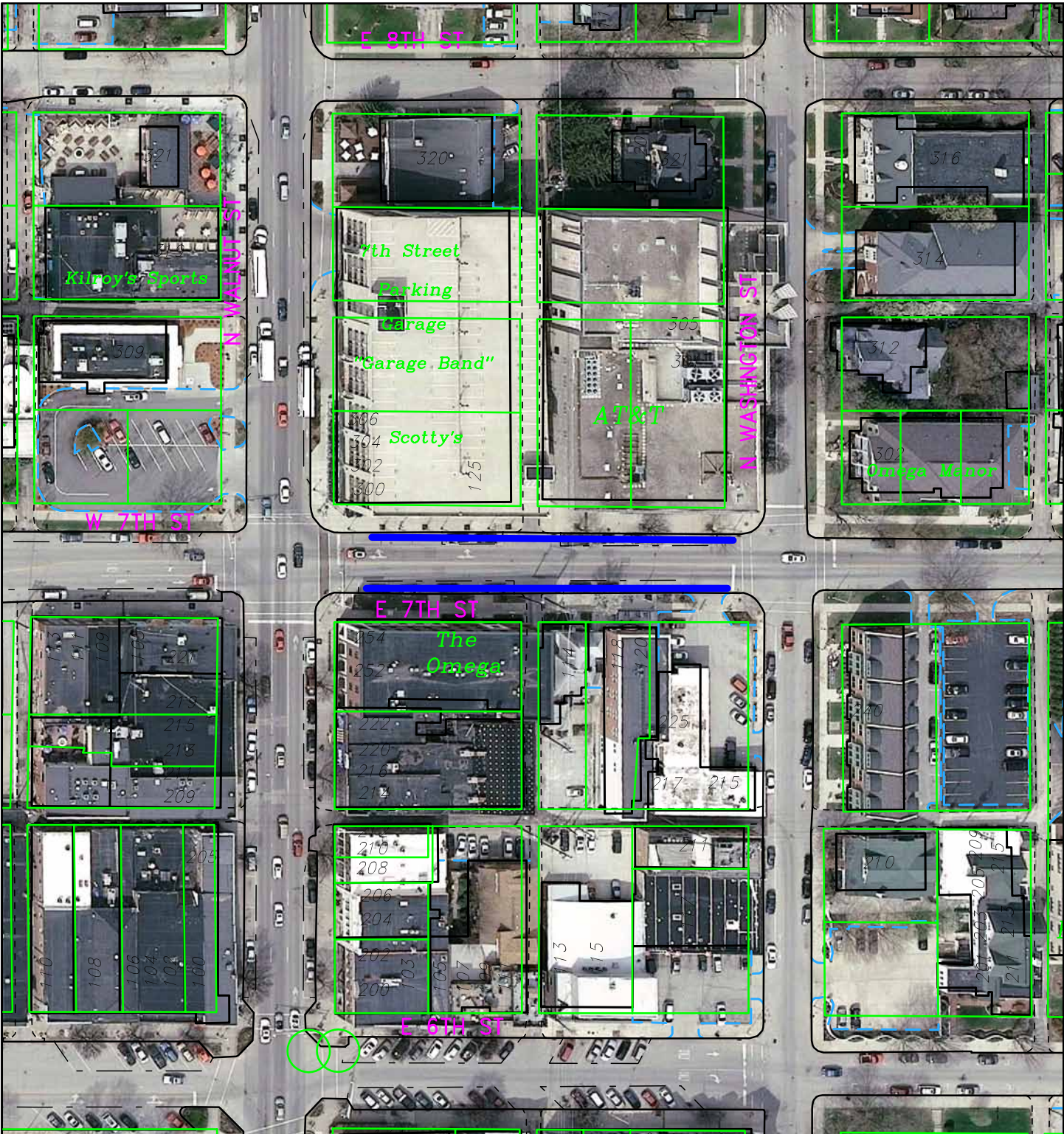


City of Bloomington
Engineering



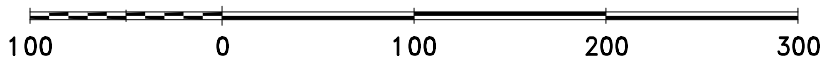
Scale: 1" = 100'

For reference only; map information NOT warranted.



Map 5

By: wykoffj
29 Sep 11

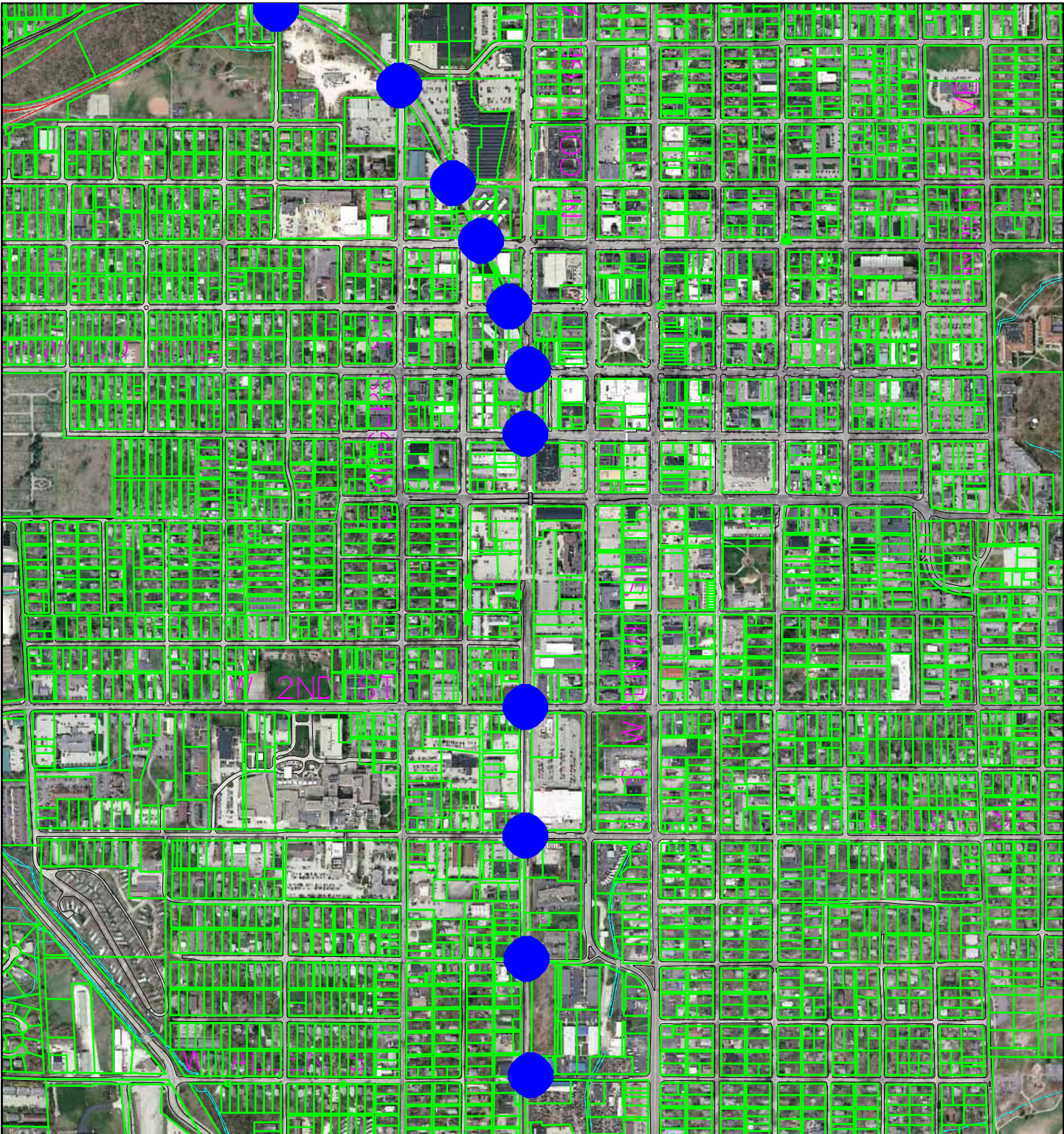


For reference only; map information NOT warranted.

City of Bloomington
Engineering

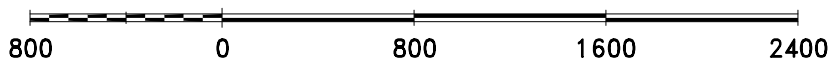
N

Scale: 1" = 100'

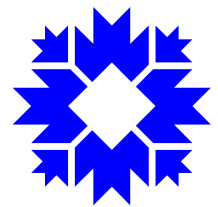


Map 6

By: wykoffj
29 Sep 11

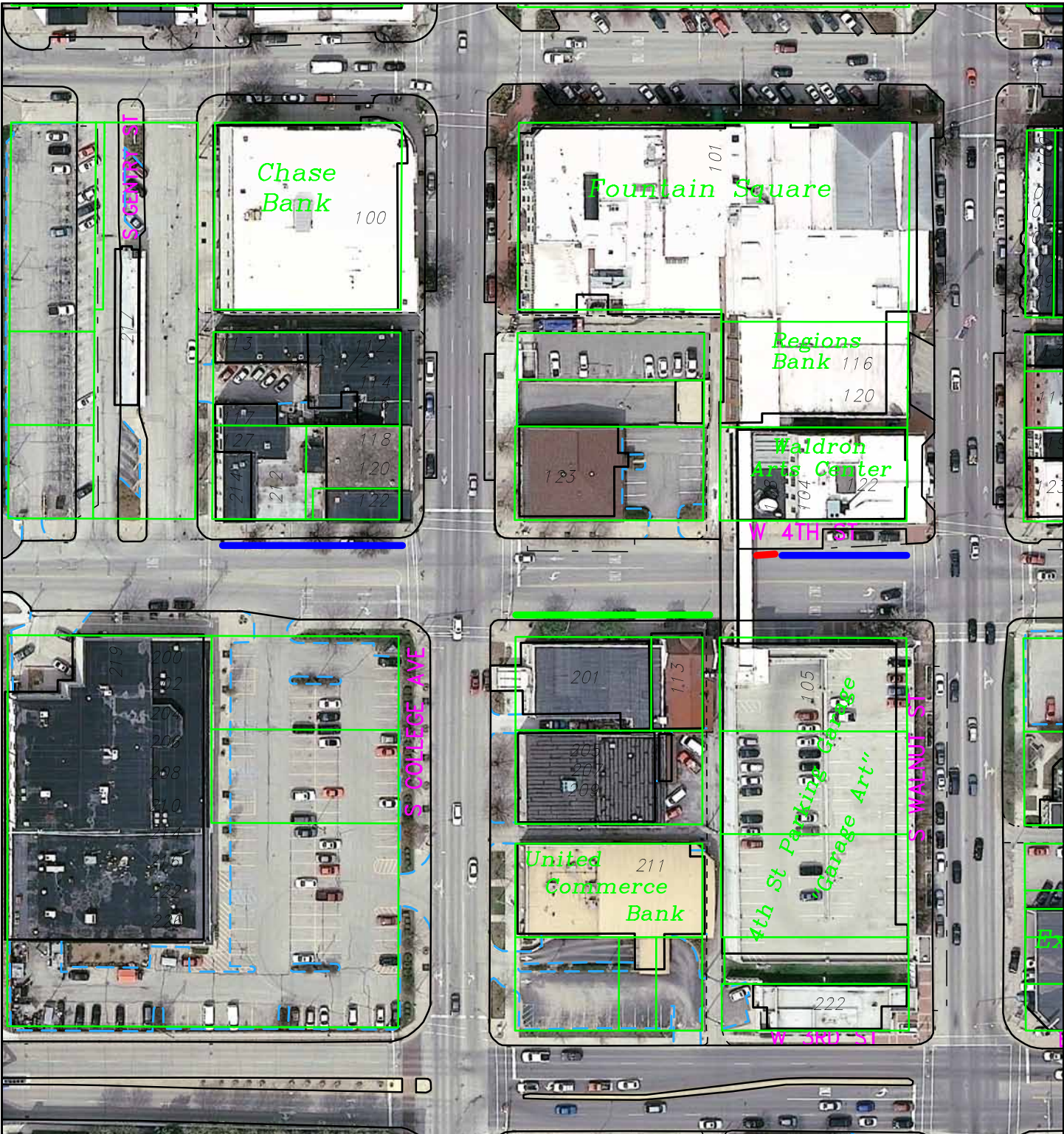


City of Bloomington
Engineering



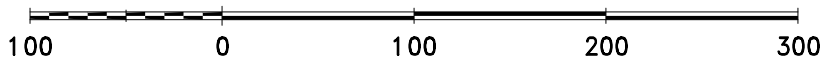
Scale: 1" = 800'

For reference only; map information NOT warranted.



Map 7

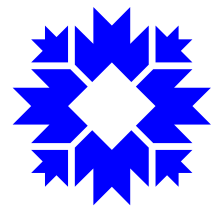
By: wykoffj
29 Sep 11



For reference only; map information NOT warranted.



City of Bloomington
Engineering



Scale: 1" = 100'