



# SIBLING CITIES USA

BLOOMINGTON-PALO ALTO  
ANNUAL REPORT FOR 2022

# INTRODUCTION

On February 15, 2022, the mayors of Bloomington, IN and Palo Alto, CA entered the first-ever Sibling Cities agreement during a launch celebration. This report summarizes the highlights from the following year.



CITY OF  
BLOOMINGTON



CITY OF  
PALO  
ALTO

## AGREEMENT For The Establishment Of A SIBLING CITY RELATIONSHIP

The City of Bloomington, Indiana, and the City of Palo Alto, California, share a common interest in promoting understanding, friendship, and relationship with their fellow Americans across the miles.

The City Councils of Bloomington and Palo Alto have each adopted resolutions to promote this common interest by entering a Sibling City relationship between the two cities and have authorized their mayors to enter this Agreement.

Sibling Cities USA was founded in 2021 to promote relationships between U.S. cities and promote national unity through three pillars of connection: community, commerce, and civil discourse.

Therefore, the two cities agree to build connections in the areas of community, commerce, and civil discourse, and in particular education, technology, sustainability practices, culture, business, sports, and the arts; and, therefore,

Hereby PROCLAIM THEMSELVES SIBLING CITIES effective as of December 1, 2021, the date on which both City Councils had passed authorizing resolutions. This Agreement shall remain in force in perpetuity so long as neither city terminates it.

John Hamilton, Mayor  
City of Bloomington

Pat Burt, Mayor  
City of Palo Alto

Tom DuBois, former Mayor  
City of Palo Alto

Executed this 15<sup>th</sup> day of February, 2022

# THREE PILLARS OF CONNECTION

## COMMUNITY

We connect community organizations to build friendship, respect, and cultural understanding

## COMMERCE

We encourage economic collaboration and sharing of best practices for equitable growth, innovation, and shared prosperity

## CIVIL DISCOURSE

We foster understanding, respect, and trust through discussions on challenging policy issues

# Bipartisan National Support for SCUSA

I applaud this inaugural effort ... and hope it leads to many future Sibling City relationships that connect and unite us as a nation. *-Rep. Anna Eshoo (CA)*

We look forward to the mutual respect, bridging of divides, and unifying pride in being fellow Americans that we believe could result from such a program. *-Tom Cochran, CEO US Conf of Mayors*

Sibling Cities USA takes an approach ... that recognizes the essential role communities play in our democracy. It is a welcome effort in these divided times. *-David Mathews, former Cabinet Secretary*

# 2022 SCUSA LEADERSHIP

VICKI VEENKER



Founder &  
CEO

KAREN HOWE FERNANDEZ



Bloomington  
Coordinator

ANDIE REED



Former Palo Alto  
Coordinator & Neighbors  
Abroad Liaison

# 2022 HIGHLIGHTS

**Virtual Kickoff**  
February 2022

**High School  
Essay Contest**  
March 2022

**Delegation Visit To  
Bloomington**  
May 2022

**Bloomington Innovation  
Award Celebration**  
May 2022

# 2022 HIGHLIGHTS

Bloomington Sign  
Unveiled at PA City Hall

August 2022

Civil Discourse  
Launch  
February 2023

Delegation Visit to  
Palo Alto  
November 2022

# PALO ALTO-BLOOMINGTON KICKOFF EVENT

February 2022

- Mayors signed Sibling Cities Agreement
- 150 Attendees

## Keynote Speakers:



**Cornell William Brooks**  
Former NAACP President and  
Harvard Professor



**Tara VanDerveer**  
Indiana University Alumna  
and Stanford Women's  
Basketball Head Coach



# DELEGATION VISITS BLOOMINGTON

May 2022

- Dimension Mill Visit
- City Hall Tour with Mayor Hamilton
- Lunch Meeting at IU Cook Center for Arts & Humanities with BEDC and Chamber of Commerce



# DELEGATION VISITS BLOOMINGTON

May 2022

- Visit to Teacher's Warehouse
- Brown County sightseeing with concert by Jacobs School of Music students at Nashville Art Guild
- Gathering with members of the Bloomington Rotary Club



# DELEGATION VISITS

## PALO ALTO

November 2022

- Welcome Lunch by Neighbors Abroad
- Climate Summit with US Department of Energy Asst. Secretary Ali Nouri
- Civil Discourse Planning Meeting
- Economic Roundtable at City Hall with the PA Chamber of Commerce





# DELEGATION VISITS

## PALO ALTO

November 2022

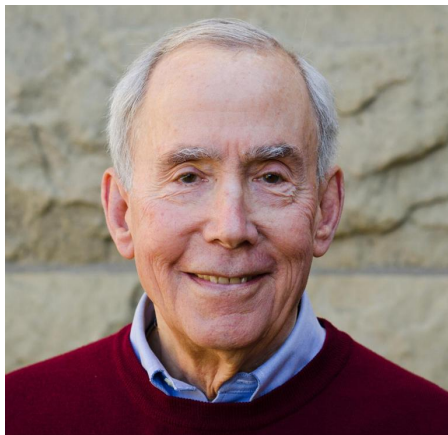
- IU Alumni Association Reception
- Stanford, Art Center, Downtown, and other tours
- Jacobs School String Quartet Performance
- Rotary dinner



# CIVIL DISCOURSE LAUNCH

February 2023

- 40+ Attendees
- Event included our first cross-cities discussion groups



**Tom Ehrlich**  
Former Stanford Dean  
and  
IU President



**Joan Blades**  
Co-Founder,  
Living Room  
Conversations

## Keynote Speakers:

# IMPACT METRICS

6

High school Essay  
Contest winners

10

Joint Steering  
Comm. Meetings

26

Delegates visit their  
Sibling City led by Rotary

36

Connected  
organizations

65

Attend Civil Discourse  
Planning Meeting

150

Attendees at Virtual  
Kickoff

200

Attend Climate  
Summit

200

Cans of food & \$1000  
raised in Kiwanis fundraiser

200+

Participants and  
supporters

# LOOKING FORWARD

- **COMMUNITY:** Counterpart groups will continue to meet, exchange ideas, and undertake joint projects
- **COMMERCE:** The business communities will continue to share best practices and discuss economic development
- **CIVIL DISCOURSE:** Town Halls and small group discussions will take place throughout the year



# ESSAY WINNERS TO TRAVEL TO THE NETHERLANDS

## Summer 2023

- High school students wrote about civil courage
- 6 winners; 3 from each city
- Winners will travel to Enschede, Muenster, & Amsterdam
- Sponsored by Neighbors Abroad





# FALL 2023 CIVIL DISCOURSE TOWN HALLS

**August 2023**

Regional Divides:  
What's the need for  
Sibling Cities?

**November 2023**

Race, Equity, &  
Belonging

**October 2023**

Climate Action &  
Sustainability

# WANT TO GET INVOLVED?

## **Civil Discourse**

- Join a Town Hall Planning Group
- Host a Living Room Conversation

## **Counterpart Connection**

- Community Group Projects
- Business/Commerce Connections

## **SCUSA Leadership**

Join a Committee:

- Joint Steering Comm.
- Civil Discourse

# CONTACT US!

**Vicki Veenker:**

[vicki@siblingcitiesusa.org](mailto:vicki@siblingcitiesusa.org)

**Karen Howe Fernandez:**

[bloomington@siblingcitiesusa.org](mailto:bloomington@siblingcitiesusa.org)

# Field Reconnaissance Study

## Street, Sidewalk, Sidepath & Curb Ramp Asset Condition Data

---

Adam Wason

Director, Department of Public Works

June 7 , 2022



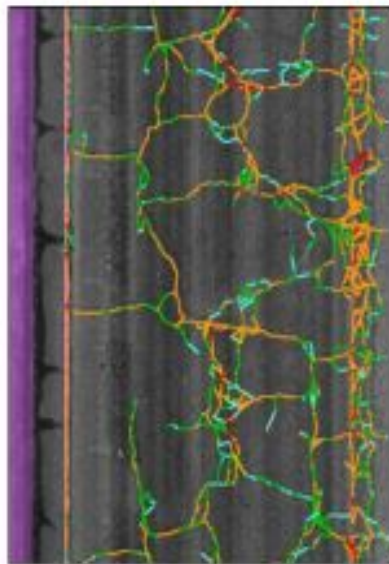
# Field Reconnaissance Data

- Survey projects conducted:
  - 2017-2018 (a big first)
  - 2022
- Condition data sets collected:
  - Street Pavement
  - Sidewalks/Sidepaths
  - Accessible Curb Ramps

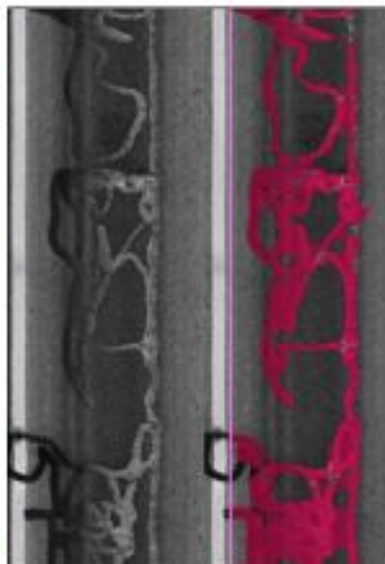


# LCMS-2 PAVEMENT DISTRESS ANALYSIS

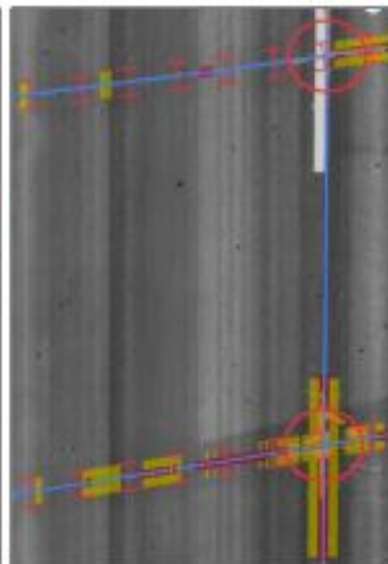
Cracks



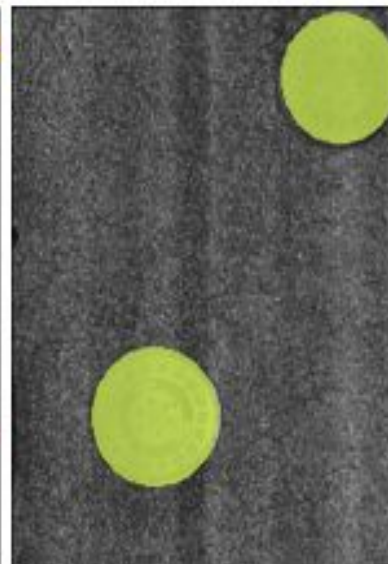
Sealed cracks



Concrete Joints



Utilities



# Quick Facts - Street Paving

- Streets and Bicycle lanes
- Pavement provides smooth, all weather surface
- Supports wide range of transportation types and users
- New ADA infrastructure required for paving





# Street Assets - Types by Mileage

- **Streets:** 239 miles
- **Bicycle Lanes:** 39 miles
- **Sidepaths:** 22.9 miles
- **Sidewalks:** 251.3 miles





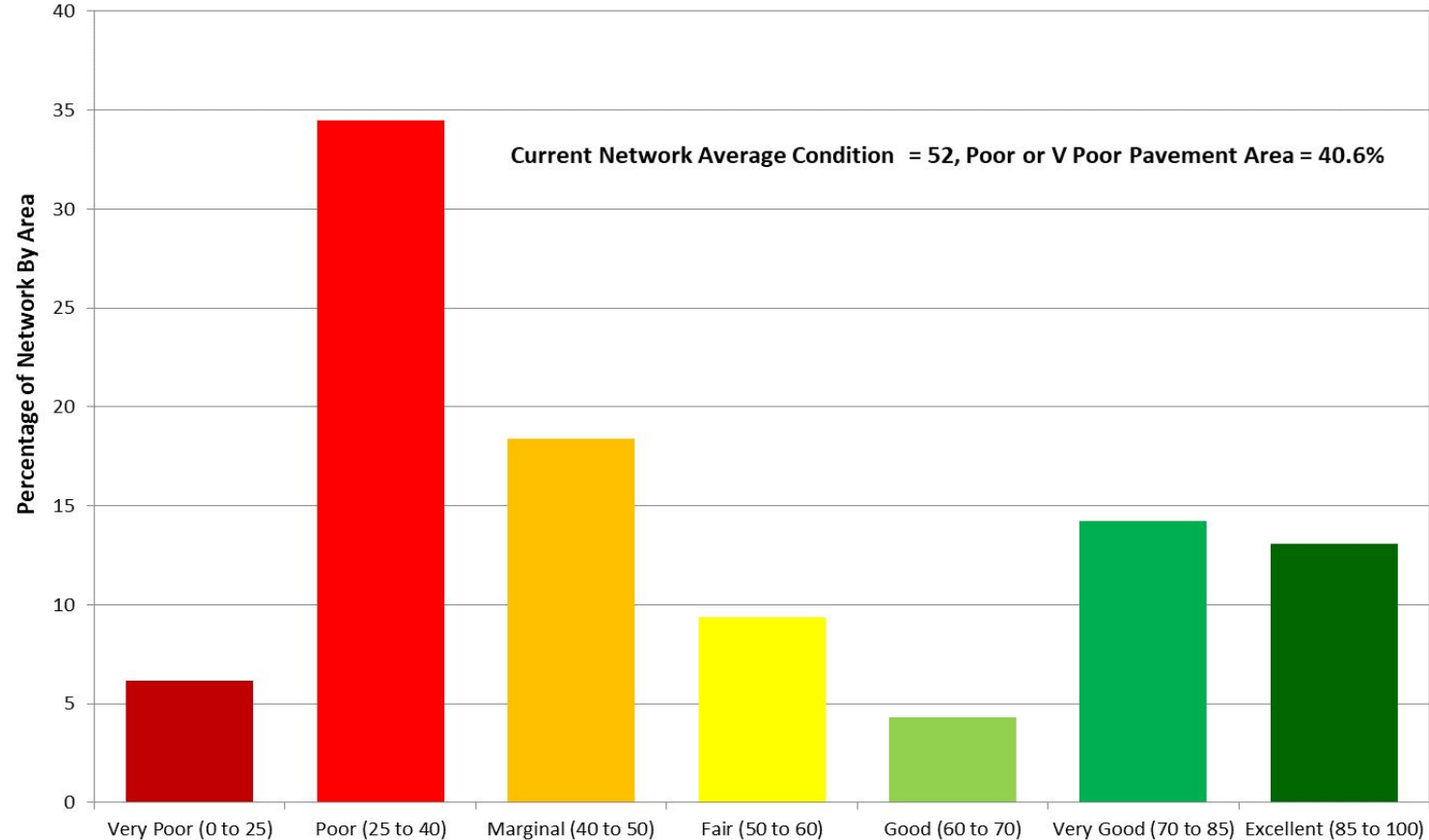
# Street Assets - Types by Square Footage

- **Streets:** 6,662,937,600 sq. feet
- **Bicycle Lanes:** 1,087,257,600 sq. feet
- **Sidepaths:** 638,415,360 sq. feet
- **Sidewalks:** 7,005,841,920 sq. feet



# Bloomington IN

## Current Pavement Condition Rating Using Descriptive Terms



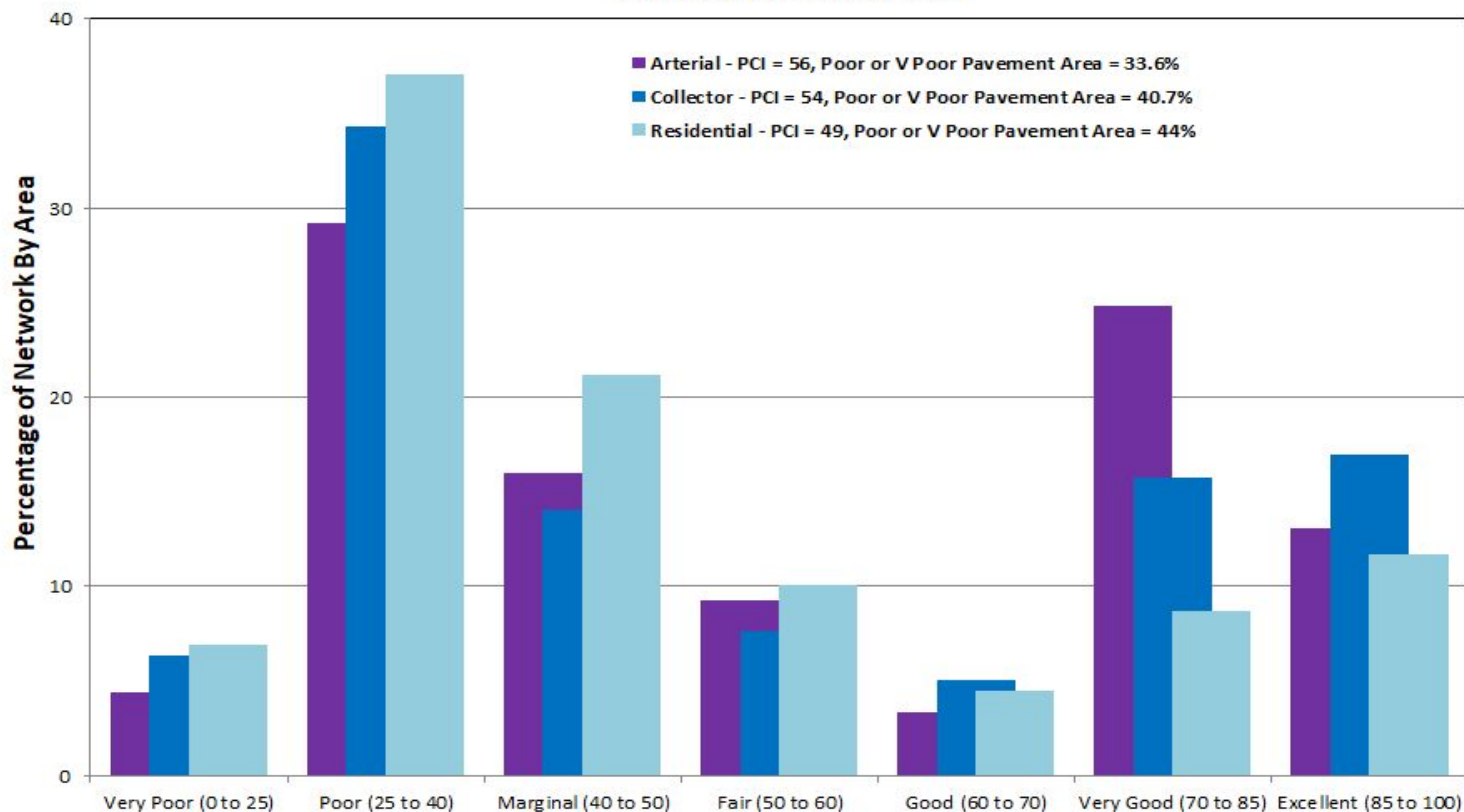
Current Pavement Condition Index (CPCI) Using Descriptive Terms

Current PCI Date = March 2023

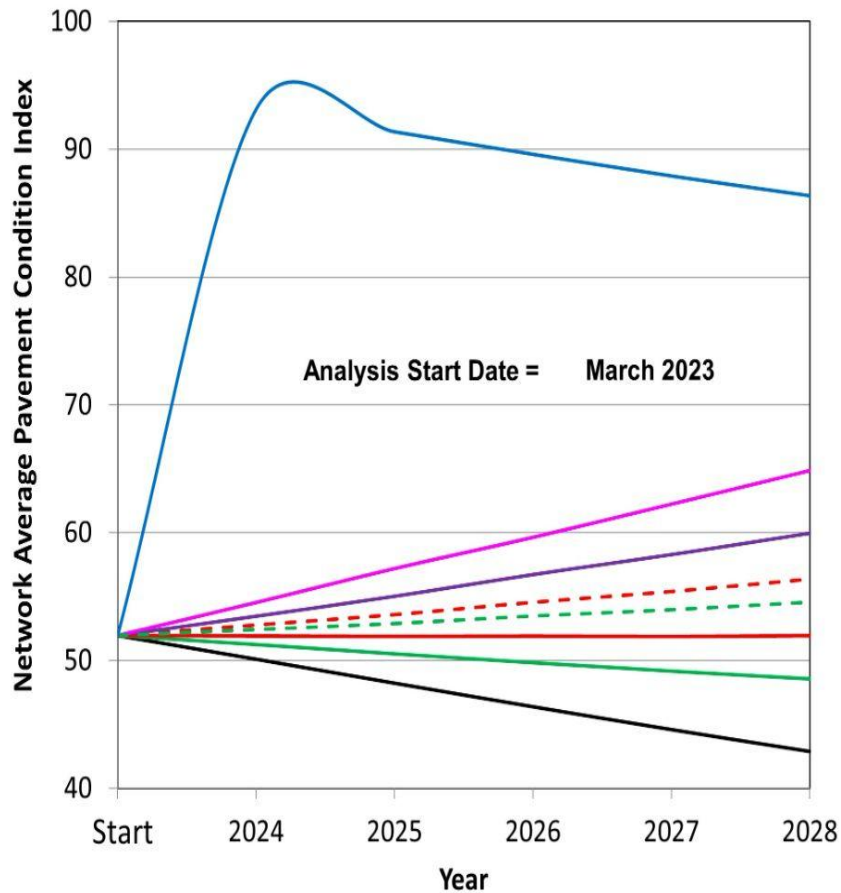
# Bloomington IN

## Current Pavement Condition Rating Using Descriptive Terms

### By Functional Class Group



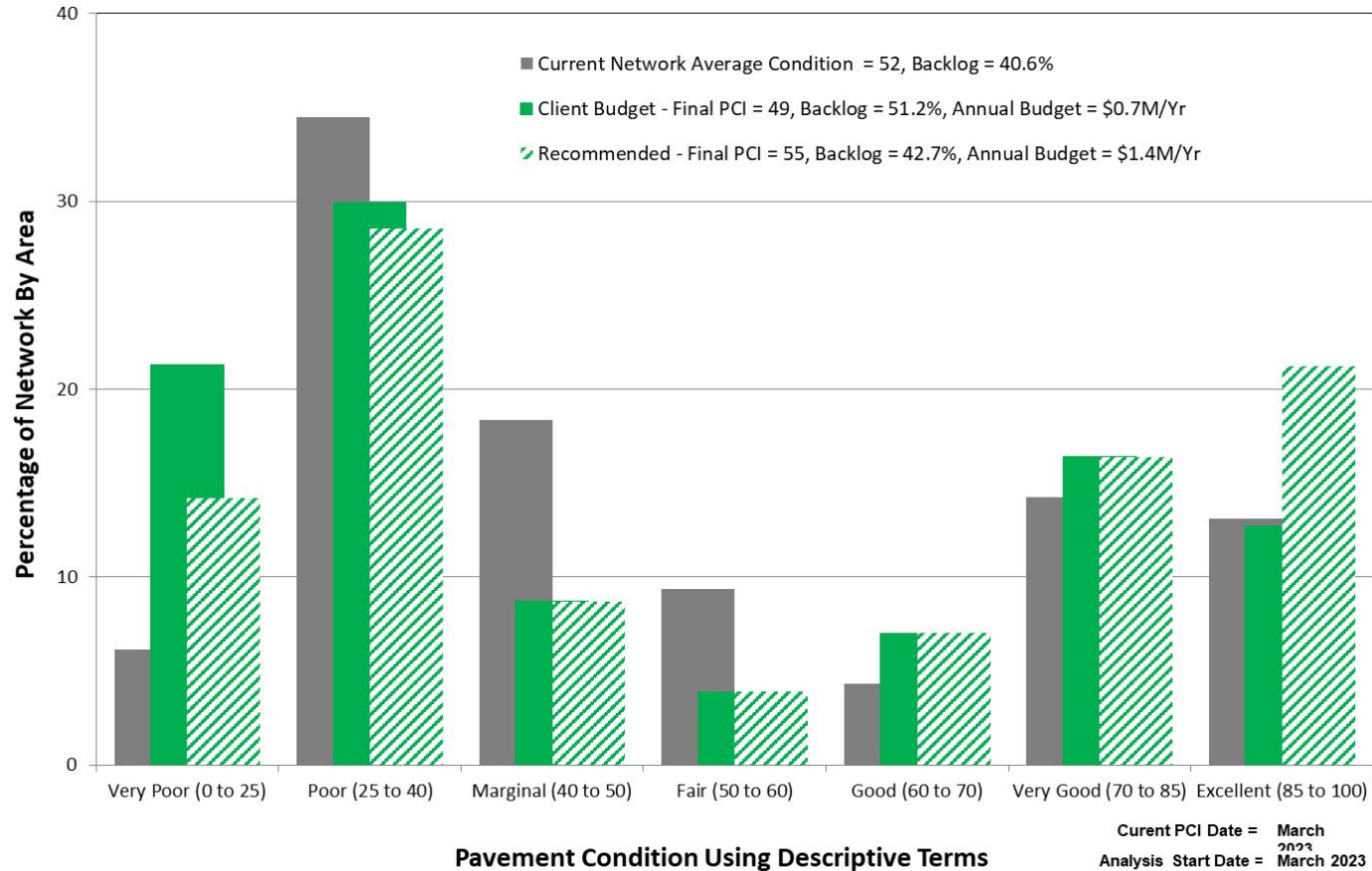
Current PCI Date = March



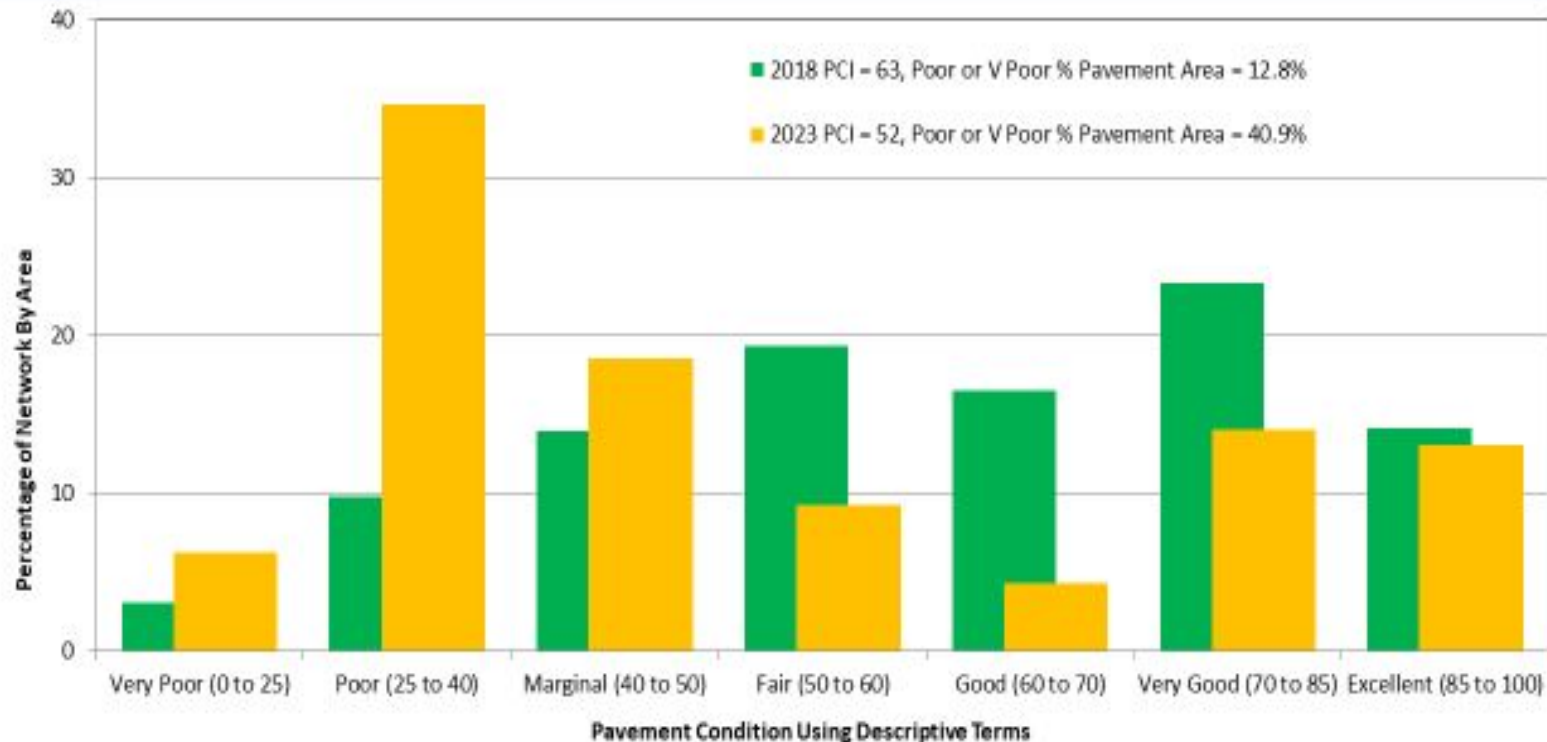
- Do Nothing - Final PCI = 43, Backlog = 59.1%, Annual Budget = \$0M/Yr
- Client Budget - Final PCI = 49, Backlog = 51.2%, Annual Budget = \$0.7M/Yr
- Steady State PCI - Final PCI = 52, Backlog = 46.4%, Annual Budget = \$1.1M/Yr
- - Steady State Backlog - Final PCI = 56, Backlog = 40.2%, Annual Budget = \$1.6M/Yr
- PCI Control - Final PCI = 60, Backlog = 35.1%, Annual Budget = \$2M/Yr
- PCI Target - Final PCI = 65, Backlog = 27.7%, Annual Budget = \$2.6M/Yr
- - Recommended - Final PCI = 55, Backlog = 42.7%, Annual Budget = \$1.4M/Yr
- Fix All - Final PCI = 86, Backlog = 0%, Annual Budget = \$6.04M/Yr

# Bloomington IN

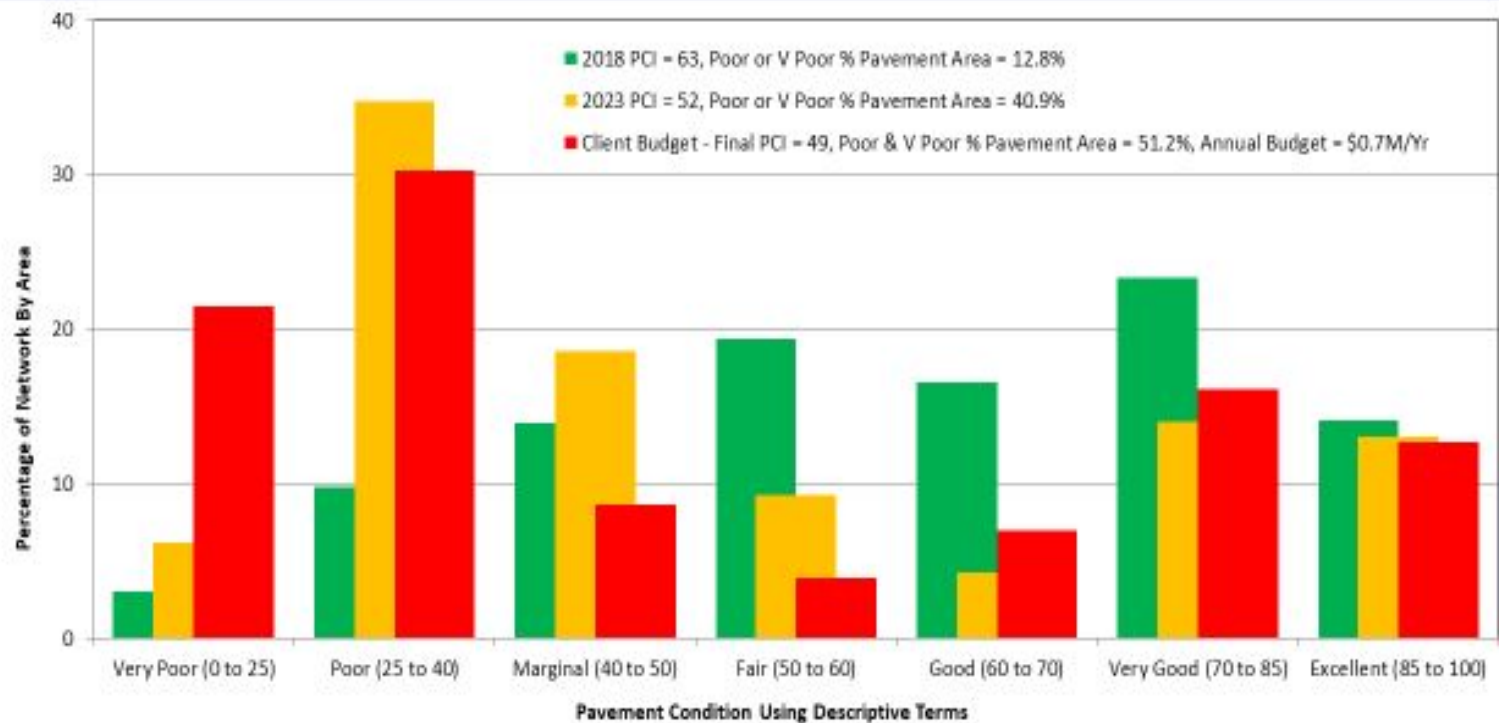
## Current Condition Versus 5-Year Post Rehab Condition



# 2018 VS CURRENT CONDITION



# 2018 VS CURRENT CONDITION VS 5-YEAR POST REHAB



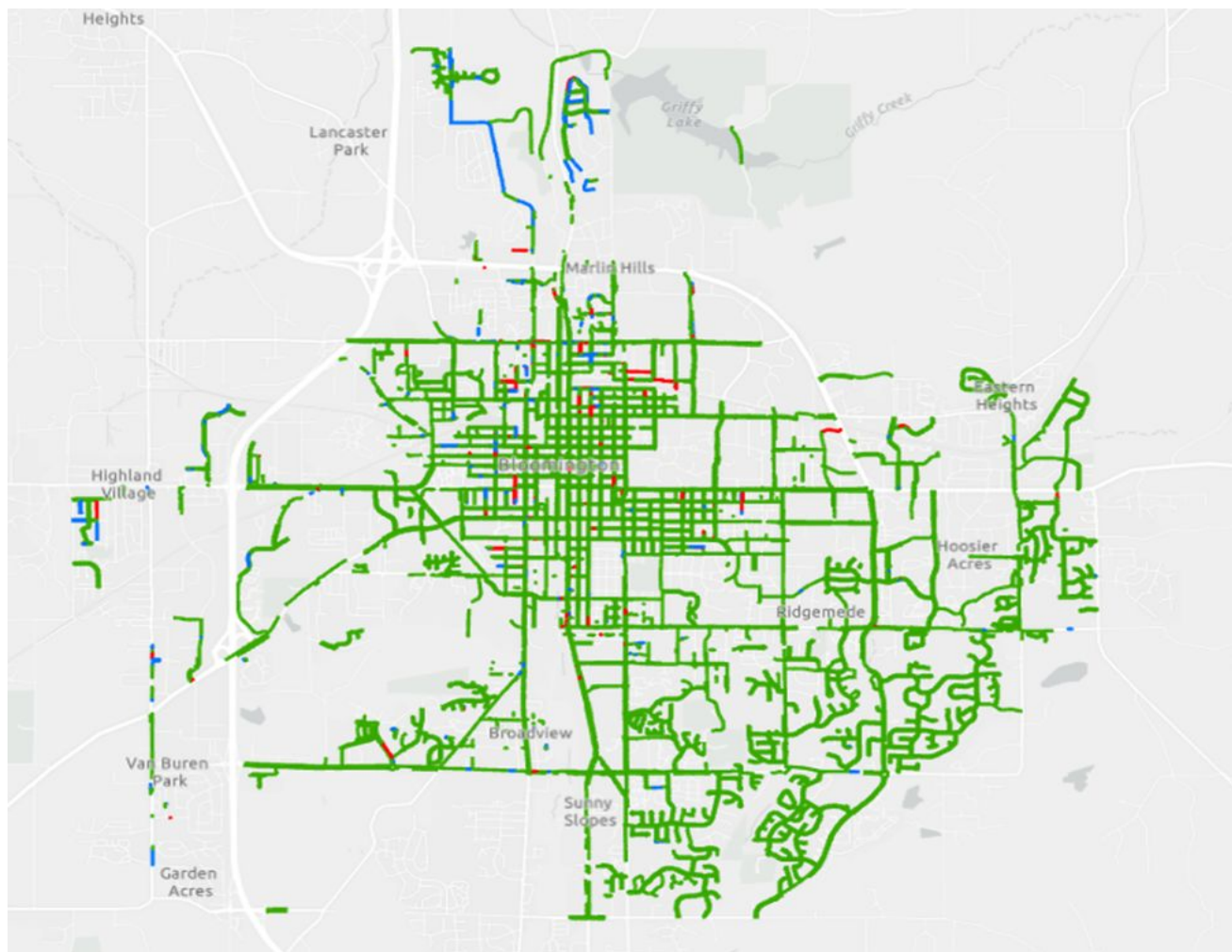


# Quick Facts - Sidewalks

- 251.3 miles of sidewalks
  - Concrete (91%)
  - Brick & Stamped Brick (1%)
  - Asphalt (8%)
- Condition Ratings
  - Good: 239.5 miles
  - Fair: 7.6 miles
  - Poor: 4.2 miles
  - No Sidewalk: 169.5 miles





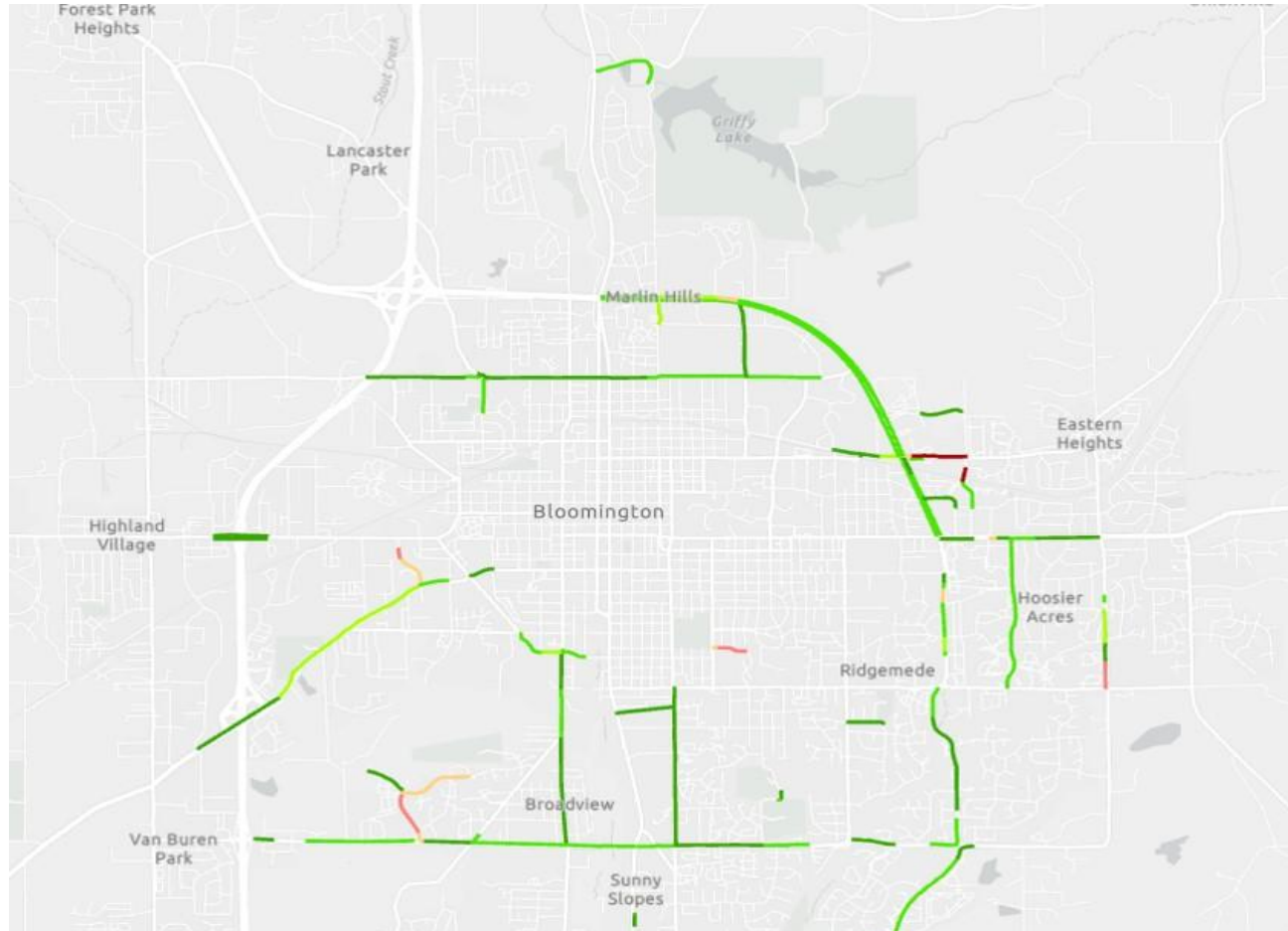


# Quick Facts - Sidepaths

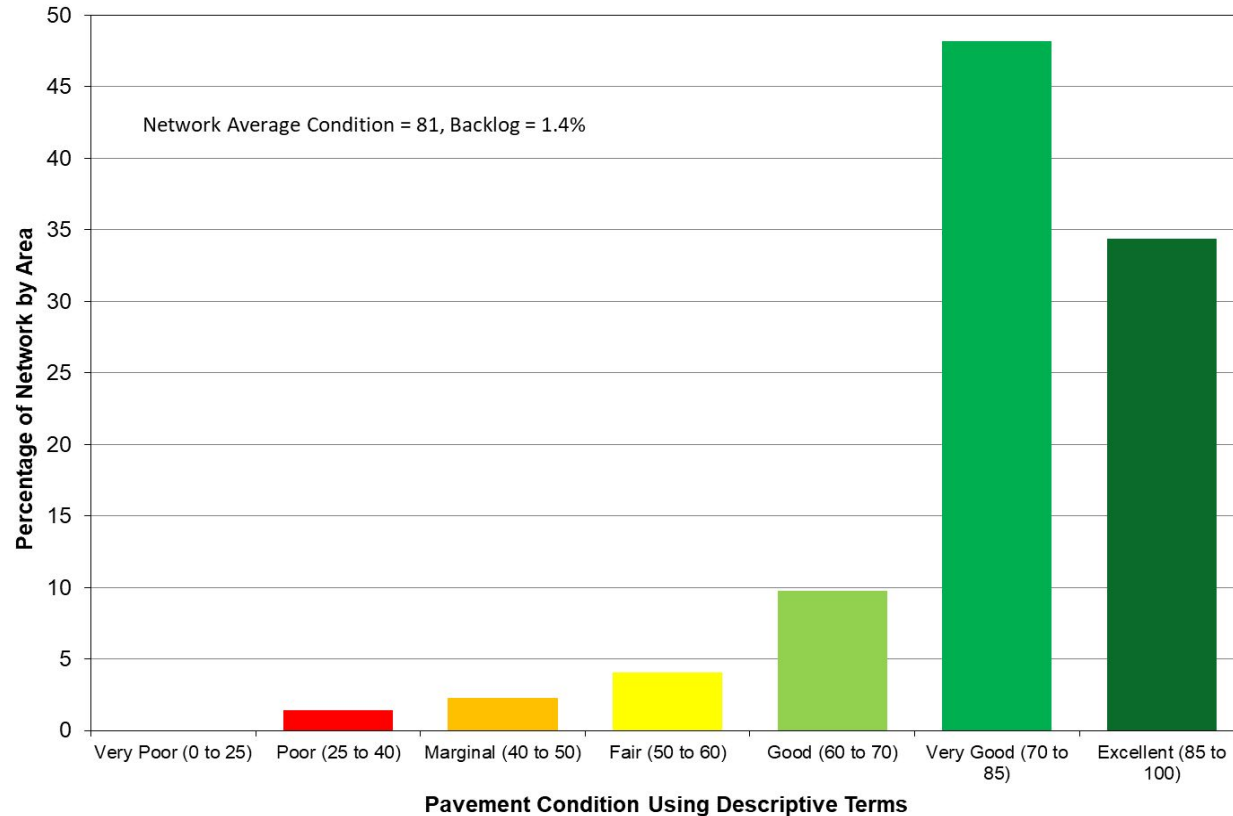
- 22.9 lane miles of public sidepaths
  - Adjacent to public ROW
  - Asphalt (21.5 miles)
  - Concrete (1.4 miles)
- Average Condition: 81 PCI



# Sidepath Location/Condition Map



# Sidepath - Pavement Condition Data



# OVERVIEW OF RAMP TYPES



Type V

Ramp Required



Type IV  
*Three or More Deficiencies*

Deficiencies: VIF = No Facility, Ramp Cross Slope > 2, Landing Length < 46 in, Landing width < 46 in, Landing Cross Slope > 2



Type III

*Two Deficiencies*

Deficiencies: VIF = Textured, Ramp Cross Slope > 2



Type II

*One Deficiency*

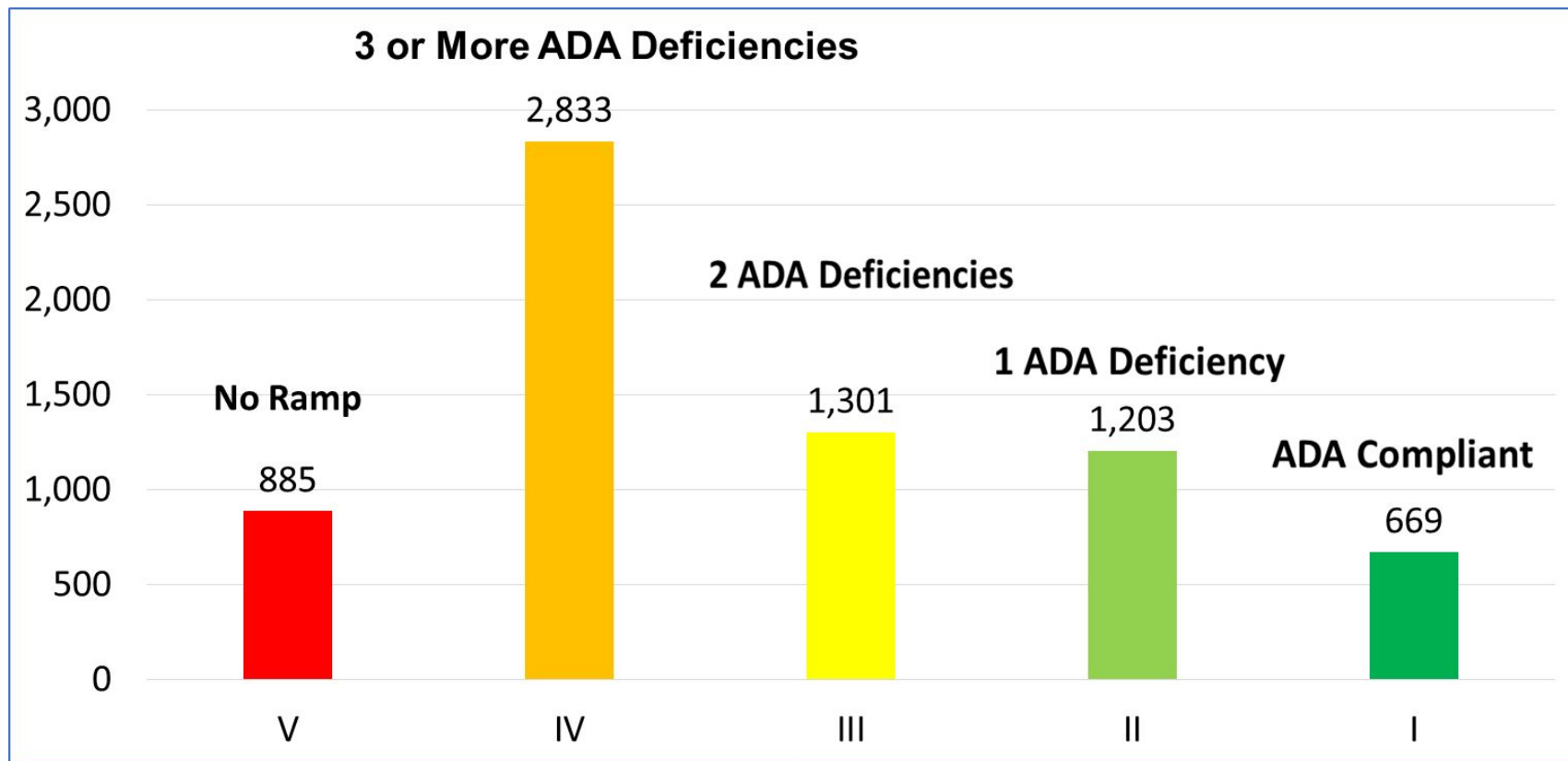
Deficiency: Landing Run Slope > 2



Type I

*No Deficiencies, all measurements are within ADA compliance range and the VIF value is truncated domes*

# Accessible Curb Ramp Type Analysis





# OVERVIEW OF RAMP CONDITIONS



**Poor**

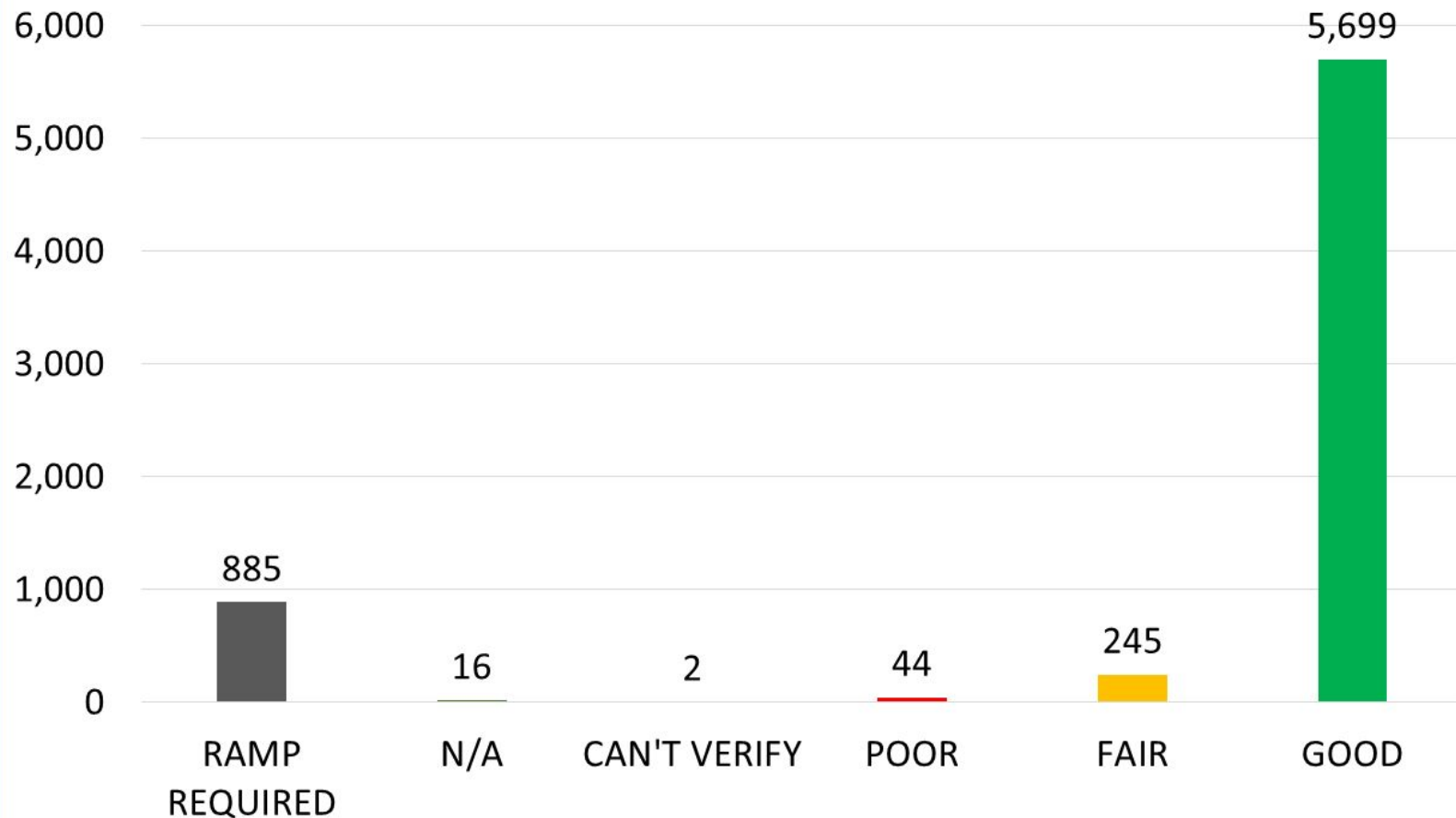


**Fair**



**Good**

## Total Ramps by Condition



# Project Next Steps

- Data collected:
  - Import to City asset management software
  - Uploading data to City GIS maps
  - B-Clear Data Portal - Available to the Public
  - <https://data.bloomington.in.gov/stories/s/uks5-36kc>



Search by address, intersect



Search by address, intersection, or street

West  
Brook  
Downs

Forest Park  
Heights

Lancaster  
Park

New  
Unionville

Griffy  
Lake

Griffy  
Creek

Marion  
Hills

Eastern  
Heights

Highland  
Village

Monroe  
County  
Airport

Van Buren  
Park

Garden  
Acres

Stoddard  
view

Sunny  
Slopes

Ridgemoor

Hoover  
Acres

Knight  
Ridge

1mi

Layer List

Layers

- ☒ Transportation Infrastructure Condition Data ...
  - ☒ Curb Ramps Condition Data ...
    - Good
    - Fair
    - Poor
    - No Rating
  - ☒ Street Condition Data ...
    - Excellent
    - Very Good
    - Good
    - Fair
    - Marginal
    - Poor
    - Very Poor
  - ☒ Sidewalk Condition Data ...
    - Excellent
    - Very Good
    - Good
    - Fair
    - Marginal
    - No Rating
  - ☒ Sidewalk Condition Data ...
    - Good
    - Fair
    - Poor
    - No Rating
  - ☐ Missing Infrastructure ...
  - ☒ Missing Curb Ramps ...

# PROPOSAL TO ADJUST SERVICE FEES

---

Adam Wason

Director, Department of Public Works

June 7 , 2022



# Increased Solid Waste Disposal and Recycling Processing Costs

- Increased fees for recycling processing, and solid waste disposal, combined with increased tonnages have resulted in increased disposal and processing costs from 2017 through 2022



# Solid Waste and Recycling Tonnages

	2018	2019	2020	2021	2022
Solid Waste	6,771.20	7,194.86	8,060.86	8,260.53	7,917.53
Recycling	3,414.68	3,154.71	3,881.76	3,629.73	2,593.81

# Solid Waste Disposal and Recycling Processing Costs

	2018	2019	2020	2021	2022
Solid Waste (\$43.87/ton)	\$282,167	\$225,903	\$342,722	\$360,471	\$281,024
Recycling (\$27.19/ton)	N/A	\$54,960	\$97,281	\$93,603	\$56,121

# Areas of Increased Operational Costs

- Increased operational costs associated with general supply cost increases, fuel cost increases, vehicle maintenance cost increases, and utility cost increases have been ongoing and absorbed on an annual basis.

# Increased Operational Costs

Cost per Category	2017	2022
Fuel	\$68,473.89	\$195,053.83
Motor Repair	\$172,551.00	\$359,640.00
Utilities/Operational Expenses	\$18,715.26	\$44,809.10
	\$259,740.15	\$599,502.93

# Impacts of Increased Costs

- Not keeping up with needed investment on capital asset replacement for trucks.
  - Instead of one truck purchased for replacement each year, we have only been able to purchase one every other year
- Given the heavy duty use, Sanitation trucks should be on a 7 year replacement cycle and we're currently at a 10-12 year cycle, which will only exacerbate maintenance costs over time.

# Successes from Sanitation Modernization

- Resident satisfaction with garbage collection has increased as shown in the results of the community from 2017 to 2021
  - 2017 - 78% overall satisfaction
  - 2019 - 84% overall satisfaction
  - 2021 - 83% overall satisfaction
- Diversion rates have increased over this time period as well
  - 2017 - 32%
  - 2022 - 35%



# Successes from Sanitation Modernization

- Worker's compensation and serious injury rates have been significantly reduced.
- From an annual high point of nearly \$170,000 of total workers compensation costs in 2016 to a low point of \$10,655 in annual costs in 2021, the new system is proving to reduce injuries.




# Proposal to Adjust Service Fees

- Given the rising costs of operations, rates need to be adjusted simply to meet operational costs, and to properly invest in capital replacement
- After the 2023 budget hearings, the administration heard from several council members that were interested in exploring a reduction of the amount of general fund support to Sanitation.

# Annual Amounts of General Fund Support for Sanitation Division

	2018	2019	2020	2021	2022
General Fund Support Amount	\$919,786.41	\$985,625.08	\$1,009,620.10	\$978,492.12	\$1,107,486.09

# Proposal to Adjust Service Fees - Models

	35 Gallon    % 	64 Gallon    % 	96 Gallon    % 
Current Rates	\$6.51	\$11.61	\$18.52
No GF Support Reduction	\$8.15-\$9.78    25%	\$16.06 - \$19.72    38%	\$28.79 - \$34.55    55%
25% GF Support Reduction	\$9.23 - \$11.08    42%	\$18.24 - \$21.89    57%	\$32.48 - \$38.98    75%
50% GF Support Reduction	\$10.31 - \$12.37    58%	\$20.42 - \$24.50    76%	\$36.19 - \$43.43    95%
75% GF Support Reduction	\$11.39 - \$13.67    75%	\$22.59 - \$27.11    95%	\$39.90 - \$47.88    115%
100% GF Support Reduction	\$12.47 - \$14.96    92%	\$24.77 - \$29.72    113%	\$43.61 - \$52.33    135%

# Proposal to Adjust Other Service Fees

Additional Weekly Pickups	35 Gallon	64 Gallon	96 Gallon
Current	\$1.89	\$3.38	\$5.38
Proposed	\$3.78	\$6.76	\$10.76

Item Collected	Large Items	Appliances
Current Rate	\$10	\$10
Proposed	\$25	\$35

# THANK YOU.

Questions?

