

CITY OF BLOOMINGTON

PARKING COMMISSION

Regular Meeting

PACKET

January 25, 2024

Thursday, January 25, 2024

Hybrid Meeting in in the Hooker Conference Room (Room #245) of City Hall and Remotely on Zoom

5:30 PM — 7:00 PM

The City is committed to providing equal access to information. However, despite our efforts, at times, portions of our board and commission packets are not accessible for some individuals. If you encounter difficulties accessing material in this packet, please contact Melissa Hirtzel at hirtzelm@bloomington.in.gov and provide your name, contact information, and a link to or description of the document or web page you are having problems with.

PARKING COMMISSION REGULAR MEETING

January 25, 2024, 5:30 PM — 7:00 PM

The meeting will be held both in person in the Hooker Conference Room (Room #245) of City Hall at the Showers Building, 401 N. Morton Street, Bloomington, Indiana and through a virtual platform via Zoom using the following link:

<https://bloomington.zoom.us/j/6359441221>

Meeting ID: 635 944 1221

Passcode: COBPT

Dial by your location: 312 626 6799 (Chicago)

- I. Call to Order
- II. Approval of Minutes
 - A. August 24, 2023
 - B. September 28, 2023
 - C. October 26, 2023
- III. Reports from Commissioners and City Offices
- IV. Reports from the Public
 - A. 121 N Pete Ellis Dr - Craig Miller - *Can the 14 angled parking spaces in the ROW be reserved for business tenants during business hours?*
 - B. 7th St and Kirkwood accessible parking needs - Denise Valkyrie
 - C. Springhill Suites valet parking process - Korey Alexander
- V. Discussions of Resolutions
- VI. Discussions of Topics Not the Subject of Resolutions
 - A. No-parking signs on E Maxwell Ln east of High St
 - B. Zone 6 parking
 - C. Current distribution of loading zones
 - D. On-street parking/3-lane section east of Atwater and Woodlawn
- VII. Topic Suggestions for Future Agendas
- VIII. Member Announcements
- IX. Commission Schedule (Regular Meeting and Work Session)
- X. Adjournment

Auxiliary aids for people with disabilities are available upon request with advance notice.

Please call (812) 349-3429 or E-mail human.rights@bloomington.in.gov.

Next Regular Meeting: February 22, 2024, 5:30 PM — 7:00 PM
Deadline for Next Regular Meeting Packet Material: Monday, February 19, 2024

PARKING COMMISSION REGULAR MEETING

Minutes

Date: 8/24/2023, 5:30 PM

The meeting was held hybridly in the Hooker Conference Room and remotely on Zoom.

Parking Commission minutes are transcribed in a summarized outline manner. Audio recordings of the meeting are available in the Planning and Transportation Department for reference.

Attendance

Parking Commissioners present:

Ben Dalton (Chair), Jack Wanninger (Vice-Chair), Eoban Binder (Secretary), Christopher Emge, David Wolfe Bender, Michael Schnoll, Stephen Volan

Parking Commissioners absent:

Wahl

Others in Attendance:

Ryan Robling, Karina Pazos (CoB staff)

- I. Call to Order – (~ 5:30 PM)**
- II. Approval of Minutes – none**
- III. Reports from Commissioners & City Offices**
 - A. Karina Pazos reports the Streets and Roadways Steering Committee is seeking members (two members from Parking Commission); looking to work on Vision Zero plan, and applying for grants. All grant applications require a steering committee. Emge asks for clarification on committee's goals. Staff: seeking amendment to Transportation Plan, starting with a Council resolution. Funding is approved but amendment resolution is still pending. CM Volan raises question about relationship between parking and safety. Dalton volunteers to serve on the steering committee.
 - B. Jack Wanninger report: Applied for Neighborhood Zone 1 parking permit. Had praise for how smoothly the system works.
- IV. Reports from the Public (none)**
- V. Discussions of Resolutions**
 - A. Resolution 23-03 - Accessible parking for persons with disabilities (staff)
 - Audrey Brittingham, city attorney: wanting to update Title 15 line to ensure downtown parking accessible spaces are not to be limited to 4 hours, but

to unlimited time just like the other spaces around them. Various questions from commission on exact language, and the result of the new language. Motion from CM Volan for positive recommendation. Motion carries: 4 yes; 1 no; 3 abstain

VI. Discussions of Topics Not the Subject of Resolutions

- Emge: revisiting loading zones and how they are managed and periodically reviewed.
- Wolf Bender: revisiting meter rates. Dalton suggests expanding this to reviewing more data overall and then making certain recommendations, which could include meter rates. Discussion of timing with respect to old and new council in January; commission should produce a report for council; Bender volunteers to begin creating outline.
- Wanninger: possible inconsistencies in parking violations language, and class C traffic infractions (\$50). But, bike lane is only class B violation. CM Volan: strategies for enforcement, and for signage. Many cars continue to stop in 3rd St bike lane. Is enforcement responsibility of Bloomington Police department? Parking enforcement? IU Police? IU Parking?

VII. Commission Schedule (Regular Meeting and Work Session)

- Next Work Meeting: none scheduled
- Next Regular Meeting: Sep 28, 2023, 5:30 PM — 7:00 PM

VIII. Adjournment – CM Volan moves to adjourn; Wanninger seconds. Adjourned ~6:35 PM

PARKING COMMISSION REGULAR MEETING

Minutes

Date: 9/28/2023, 5:30 PM

The meeting was held hybridly in the Hooker Conference Room and remotely on Zoom.

Parking Commission minutes are transcribed in a summarized outline manner. Audio recordings of the meeting are available in the Planning and Transportation Department for reference.

Attendance

Parking Commissioners present:

Ben Dalton (Chair), Jack Wanninger (Vice-Chair), Eoban Binder (Secretary), Stephen Volan, Christopher Emge

Parking Commissioners absent:

Schnoll, Wolfe Bender, Wahl

Others in Attendance:

Ryan Robling, Karina Pazos (CoB staff)

- I. **Call to Order** – (~ 5:30 PM)
- II. **Approval of Minutes** – Minutes amended to note Wanninger is Vice-Chair, not CM Volan. CM Volan moves to approve; Emge seconds. Approved unanimously.
- III. **Reports from Commissioners & City Offices**
 - A. Robling: memo from Stephen Lucas on subject of creating Transportation Advisory Commission.
 - B. Response from Emge: CM Volan is on committee evaluating merging transportation commissions; has commission ever applied for grants / appropriations? CM Volan: should all the commissions have the same rules, responsibilities, etc? More than the baseline of officers, having bylaws, etc.
 - C. Annual report is supposed to be submitted each October. Binder: perhaps there should be a template? CM Volan: has already been proposed
 - D. CM Volan: if commissions are being merged anyway, Parking Commission shouldn't spend time on its own governance/language. Dalton: we typically have a full docket, so how would a single merged commission not be overburdened? More discussion of scope of Parking Commission.
- IV. **Reports from the Public**
 - Terra Trace resident complaint about ineligibility to purchase Zone 6 permit.

- Discussion: tried to do this already, didn't get anywhere with council with idea of different pricing for multifamily. Dalton: what about limited number of additional permits, lottery system? Emge: could Parking Services even operate a system like this? (Question directed to Rayeann Cox; Cox refers commission to ask this question of Michelle Wahl).
- Wolfe Bender: wants to look at numbers more closely; which neighborhood zones are under-capacity, over-capacity, etc?
- Robling: no official position from staff on Zone 6 issue yet, but may have it for next time.

V. Discussions of Resolutions

- A. Resolution 23-03 - Accessible parking for persons with disabilities (staff)
- Audrey Brittingham, city attorney: wanting to update Title 15 line to ensure downtown parking accessible spaces are not to be limited to 4 hours, but to unlimited time just like the other spaces around them. Various questions from commission on exact language, and the result of the new language. Motion from CM Volan for positive recommendation
 - Motion carries: 4 yes; 1 no; 3 abstain

VI. Discussions of Topics Not the Subject of Resolutions

- Loading zone distribution, enforcement hours. Cox: most zones are placed as-needed, trying to avoid trucks blocking travel lanes, etc. Robling: by default they are 24/7. CM Volan: sounds like a title 15 change would be in order. Cox: staff uses chalk on tires, checks back after 30 minutes
- Atwater on-street parking between Woodlawn and Faculty. Was it added before? (yes) why was it removed? (staff thought it was in ordinance, but actually was not). Traffic flow, safety concerns, merits of travel lane vs. parking. Robling: Atwater and 3rd are next in line to be studied more closely, after College/Walnut corridor study.

VI. Topic Suggestions for Future Agendas

- Loading zone relocations; joint meeting with traffic commission?
- Wolfe Bender wants to draft proposal for presentation of findings of commission; questions on timeline
- CM Volan: Title 15 changes, effective deadline is december

VII. Member Announcements

- CM Volan giving talk about college campuses on October 12 at Collins LLC.
- Wanninger: police have no citations issued for the last 5 years; CM Volan: suggestion to check City Clerk's office / T2 records. Wanninger: will be reaching out also to IUPD.

VIII. Commission Schedule (Regular Meeting and Work Session)

- Next Work Meeting: none scheduled
- Next Regular Meeting: Oct 26, 2023, 5:30 PM — 7:00 PM

IX. **Adjournment** – CM Volan moves to adjourn; Binder seconds. Adjourned ~6:55 PM

PARKING COMMISSION REGULAR MEETING

Minutes

Date: 10/26/2023, 5:30 PM

The meeting was held hybridly in the Hooker Conference Room and remotely on Zoom.

Parking Commission minutes are transcribed in a summarized outline manner. Audio recordings of the meeting are available in the Planning and Transportation Department for reference.

Attendance

Parking Commissioners present:

Ben Dalton (Chair), Jack Wanninger (Vice-Chair), Eoban Binder (Secretary), Stephen Volan, Christopher Emge, Michelle Wahl

Parking Commissioners absent:

Schnoll, Wolfe Bender

Others in Attendance:

Ryan Robling, Karina Pazos (CoB staff)

- I. **Call to Order** – (~ 5:30 PM)
- II. **Approval of Minutes** – June minutes approved unanimously
- III. **Reports from Commissioners & City Offices**
 - A. Robling: Showed letter drafted to City Council summing up Parking Commission's previous discussion of Council's request for comments on city commissions' processes and procedures
 - B. Wahl: Presented parking system usage report, consisting of neighborhood permit sales, garage transient revenue, garage monthly revenue, and garage average occupancy (transient and monthly combined) percentage.
 - C. Robling: Transportation Advisory Commission proposal;
- IV. **Reports from the Public**
 - 146 Willow Ct. (Gabriel Farmer, Donna Crawford); neighbors' cars frequently parked in cul-de-sac, making it difficult for vehicles to turn around; residents cited instances of a bus, waste collection truck, and ambulance all having difficulties. CoB staff will work to address.
 - 416 E. 17th St (Matt Winter); resident lives in neighborhood permit zone 6 and is ineligible to purchase a permit due to living in a multifamily building.
 - Courthouse square (Annabelle Klemsz); resident was unhappy about parking options downtown, felt unsafe parking in garages and also believed it was too expensive. CM Volan followed up individually.

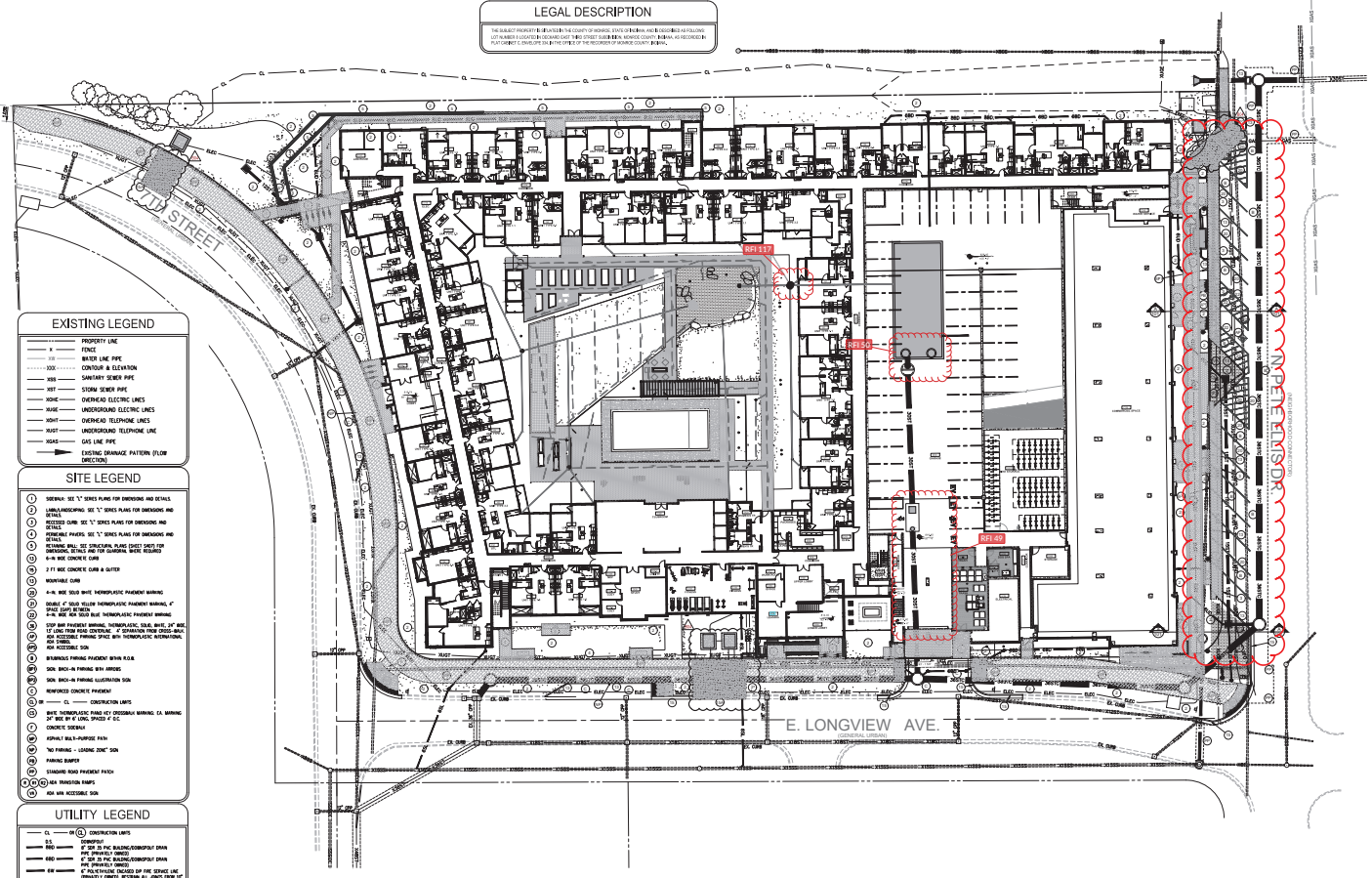
- 319 W. 15th St. (Jessica Shurr) resident lives in a single-family home but is not within a neighborhood zone; inquired how to get a zone created.

V. Commission Schedule (Regular Meeting and Work Session)

- Next Work Meeting: none scheduled
- Next Regular Meeting: Nov 16, 2023, 5:30 PM — 7:00 PM

VI. Adjournment – Adjourned ~7:02 PM

LEGAL DESCRIPTION
 THE SUBJECT PROPERTY IS LOCATED IN THE COUNTY OF MARICOPA, STATE OF ARIZONA, AND IS DESCRIBED AS FOLLOWS:
 LOT 14, BLOCK 1, CURRY URBAN PROPERTY, AS SHOWN ON A MAP OF SAID COUNTY, MARICOPA, AS RECORDED IN
 THE PUBLIC RECORDS OF THE OFFICE OF THE COUNTY CLERK OF SAID COUNTY.



EXISTING LEGEND

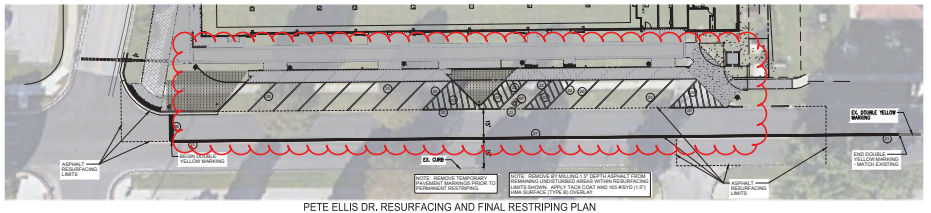
- PROPERTY LINE
- FENCE
- WATER LINE PIPE
- CONTOUR & ELEVATION
- SANITARY SEWER PIPE
- STORM SEWER PIPE
- OVERHEAD ELECTRIC LINES
- UNDERGROUND ELECTRIC LINES
- OVERHEAD TELEPHONE LINES
- UNDERGROUND TELEPHONE LINES
- GAS LINE PIPE
- EXISTING DRAINAGE PATTERN (FLOW DIRECTION)

SITE LEGEND

- 1/2" CONC. CURB & GUTTER
- 4" CONC. CURB & GUTTER
- 6" CONC. CURB & GUTTER
- 8" CONC. CURB & GUTTER
- 10" CONC. CURB & GUTTER
- 12" CONC. CURB & GUTTER
- 14" CONC. CURB & GUTTER
- 16" CONC. CURB & GUTTER
- 18" CONC. CURB & GUTTER
- 20" CONC. CURB & GUTTER
- 22" CONC. CURB & GUTTER
- 24" CONC. CURB & GUTTER
- 26" CONC. CURB & GUTTER
- 28" CONC. CURB & GUTTER
- 30" CONC. CURB & GUTTER
- 32" CONC. CURB & GUTTER
- 34" CONC. CURB & GUTTER
- 36" CONC. CURB & GUTTER
- 38" CONC. CURB & GUTTER
- 40" CONC. CURB & GUTTER
- 42" CONC. CURB & GUTTER
- 44" CONC. CURB & GUTTER
- 46" CONC. CURB & GUTTER
- 48" CONC. CURB & GUTTER
- 50" CONC. CURB & GUTTER
- 52" CONC. CURB & GUTTER
- 54" CONC. CURB & GUTTER
- 56" CONC. CURB & GUTTER
- 58" CONC. CURB & GUTTER
- 60" CONC. CURB & GUTTER
- 62" CONC. CURB & GUTTER
- 64" CONC. CURB & GUTTER
- 66" CONC. CURB & GUTTER
- 68" CONC. CURB & GUTTER
- 70" CONC. CURB & GUTTER
- 72" CONC. CURB & GUTTER
- 74" CONC. CURB & GUTTER
- 76" CONC. CURB & GUTTER
- 78" CONC. CURB & GUTTER
- 80" CONC. CURB & GUTTER
- 82" CONC. CURB & GUTTER
- 84" CONC. CURB & GUTTER
- 86" CONC. CURB & GUTTER
- 88" CONC. CURB & GUTTER
- 90" CONC. CURB & GUTTER
- 92" CONC. CURB & GUTTER
- 94" CONC. CURB & GUTTER
- 96" CONC. CURB & GUTTER
- 98" CONC. CURB & GUTTER
- 100" CONC. CURB & GUTTER

UTILITY LEGEND

- 1/2" CONC. CURB & GUTTER
- 4" CONC. CURB & GUTTER
- 6" CONC. CURB & GUTTER
- 8" CONC. CURB & GUTTER
- 10" CONC. CURB & GUTTER
- 12" CONC. CURB & GUTTER
- 14" CONC. CURB & GUTTER
- 16" CONC. CURB & GUTTER
- 18" CONC. CURB & GUTTER
- 20" CONC. CURB & GUTTER
- 22" CONC. CURB & GUTTER
- 24" CONC. CURB & GUTTER
- 26" CONC. CURB & GUTTER
- 28" CONC. CURB & GUTTER
- 30" CONC. CURB & GUTTER
- 32" CONC. CURB & GUTTER
- 34" CONC. CURB & GUTTER
- 36" CONC. CURB & GUTTER
- 38" CONC. CURB & GUTTER
- 40" CONC. CURB & GUTTER
- 42" CONC. CURB & GUTTER
- 44" CONC. CURB & GUTTER
- 46" CONC. CURB & GUTTER
- 48" CONC. CURB & GUTTER
- 50" CONC. CURB & GUTTER
- 52" CONC. CURB & GUTTER
- 54" CONC. CURB & GUTTER
- 56" CONC. CURB & GUTTER
- 58" CONC. CURB & GUTTER
- 60" CONC. CURB & GUTTER
- 62" CONC. CURB & GUTTER
- 64" CONC. CURB & GUTTER
- 66" CONC. CURB & GUTTER
- 68" CONC. CURB & GUTTER
- 70" CONC. CURB & GUTTER
- 72" CONC. CURB & GUTTER
- 74" CONC. CURB & GUTTER
- 76" CONC. CURB & GUTTER
- 78" CONC. CURB & GUTTER
- 80" CONC. CURB & GUTTER
- 82" CONC. CURB & GUTTER
- 84" CONC. CURB & GUTTER
- 86" CONC. CURB & GUTTER
- 88" CONC. CURB & GUTTER
- 90" CONC. CURB & GUTTER
- 92" CONC. CURB & GUTTER
- 94" CONC. CURB & GUTTER
- 96" CONC. CURB & GUTTER
- 98" CONC. CURB & GUTTER
- 100" CONC. CURB & GUTTER



NOTE: SEE MAINTENANCE OF TRAFFIC PLAN ON SHEET C306 FOR WORK WITHIN THE RIGHT OF WAY.

NOTE: FOR SITE RELATED ELECTRICAL ITEMS SEE "E" SERIES PLAN SHEETS.

NOTE TO CONTRACTOR
 THE CONTRACTOR SHALL BE RESPONSIBLE FOR VERIFYING THE ACCURACY OF ALL INFORMATION PROVIDED TO HIM BY THE ARCHITECT. ANY CHANGES TO THE INFORMATION PROVIDED TO HIM BY THE ARCHITECT SHALL BE THE RESPONSIBILITY OF THE CONTRACTOR. THE CONTRACTOR SHALL BE RESPONSIBLE FOR OBTAINING ALL NECESSARY PERMITS AND APPROVALS FROM THE APPLICABLE AGENCIES.

SCALE: 1"=20'







Karina Pazos <karina.pazos@bloomington.in.gov>

Re: Disabled parking in the City of Bloomington and Safety on Kirkwood, Walnut and College Streets

2 messages

Ryan Robling <roblingr@bloomington.in.gov>

Fri, Dec 15, 2023 at 3:50 PM

To: dvalkyri@iu.edu

Cc: Michael Shermis <cca@bloomington.in.gov>, Karina Pazos <karina.pazos@bloomington.in.gov>

Denise,

Thank you for sharing your thoughtful insights on Kirkwood, and 7th Street. Your perspective on the Kirkwood closure, along with detailed suggestions, is invaluable for our considerations of the Kirkwood Corridor. I will ensure your thoughts and recommendations are included in our ongoing planning for the Kirkwood corridor.

To address concerns on 7th St., I'll connect with Parking Services to gather insights and explore potential solutions. I've also included Karina Pazos, the Parking Commission staff liaison. She may reach out to you in order to include this matter on a future Parking Commission agenda for broader discussion and consideration.

Thank you for sharing your thoughts. Your advocacy for improved accessibility is truly appreciated.

If you have any questions or concerns please do not hesitate to contact me.

Thanks,

Ryan

On Mon, Nov 6, 2023 at 9:16 AM Michael Shermis <cca@bloomington.in.gov> wrote:

Ryan, can you cc me when you respond to this e-mail. Or if you have, please send me what you responded so I can see if I should also respond. Thanks. Michael

----- Forwarded message -----

From: **Valkyrie, Denise L** <dvalkyri@iu.edu>

Date: Fri, Oct 27, 2023 at 6:09 PM

Subject: Disabled parking in the City of Bloomington and Safety on Kirkwood, Walnut and College Streets

To: cca@bloomington.in.gov <cca@bloomington.in.gov>, planning@bloomington.in.gov <planning@bloomington.in.gov>

To the Traffic and Parking Commission and Council for Community Accessibility

Concerning Kirkwood Avenue between Indiana and Walnut.

I have copied some comments that I have made concerning the closing of Kirkwood.

I wish that they would leave it closed traveling East. I also hope that they only allowed drop off/pick up and handicapped parking on the side of the westbound lane and eliminate all other parking between Indiana and Walnut. I wish they would leave the area in front of the library as it was. The Kirkwood area needs the outdoor seating and could do it year round. Additionally, Indiana is one way north, turning west onto Kirkwood is the direction that Bloomington Transit utilizes for passengers. These changes would make it safer for all riders and drivers to pick up and drop off on the north side of the street. Those with disabilities could easily get the their

destinations, bringing them back to Kirkwood. Traffic wouldn't be blocked by delivery trucks. I propose something similar for Walnut and College as well. We have seen during the spring, summer, and early fall that those without disabilities could not access the area easily. Many employees uber/lyft or ride the bus to and from work because it is less expensive for them than owning a vehicle or they park at the end of a bus line and ride the bus in if they live further away. This is similar to larger metro areas as well. How do I know this? I actually talk to the passengers as I transport people to the businesses either to visit and spend money or work there. I have in a period of 4 years driven over 5 thousand people in Bloomington. 5 thousand people for very different reasons. I've seen firsthand where it is the most difficult to pick up and drop off and the reasons why it is.

Boulder, Colorado has a similar setup to this and it gets much more snow and weather there than we do.

Furthermore, the Handicapped parking that was available in front of the Monroe County Health Department was eliminated along with all of the parking along 7th between College and Walnut. This is not acceptable for disabled employees and disabled people needing access in this area. My sister can no longer drive to work at Indiana Limestone due to the lack of access in the area. Either parking garage or street parking requires her to walk further than she can and either means that she would be walking on a steep incline either there or back. There is no difficulty due to topography on 7th street between College and Walnut to accommodate handicapped parking.

Thank you for your consideration. I am available to answer any questions that you may have and to verify my claims.

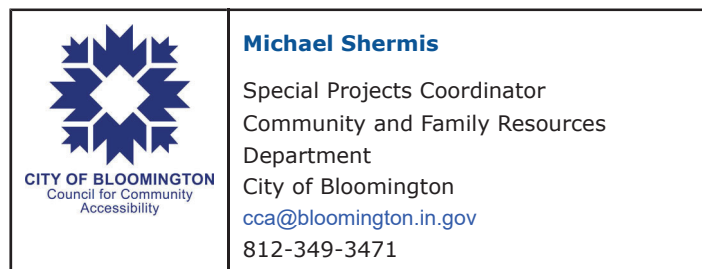
Denise Valkyrie

2503 S. Milton Drive

Bloomington, IN 47403

812-361-4652

--



--

Ryan Robling

Planning Services Manager

Planning and Transportation

Direct: 812-349-3459

Office: 812-349-3423

Karina Pazos <karina.pazos@bloomington.in.gov>
To: Ryan Robling <roblingr@bloomington.in.gov>
Cc: dvalkyri@iu.edu, Michael Shermis <cca@bloomington.in.gov>

Wed, Jan 17, 2024 at 2:44 PM

Hi Denise,

I'm going to go ahead and add this as a topic of discussion on the agenda for next week's Parking Commission meeting. Parking Commission meets every last or second to last Thursday of the month. The next meeting is next Thursday the 25th, 5:30 - 7pm and it is held in-person as well as virtually with the following Zoom link:
<https://bloomington.zoom.us/j/6359441221?pwd=bXRYTnNJV2xMbTRLLeE00QW9XWnRjQT09>

If you're able to attend, it would be great to hear your thoughts and further discuss any questions that might arise during the meeting.

Thanks,
Karina

[Quoted text hidden]

--

	<p>Karina Pazos (she/her)</p> <p>Long Range Planner</p> <p>Planning and Transportation Department</p> <p>City of Bloomington, IN</p> <p>karina.pazos@bloomington.in.gov</p> <p>812.349.3423</p> <p>bloomington.in.gov</p>
---	--



Karina Pazos <karina.pazos@bloomington.in.gov>

Re: [Planning] Re: Valet parking permits

3 messages

Ryan Robling <roblingr@bloomington.in.gov>
To: kalexander@sophimobility.com
Cc: Karina Pazos <karina.pazos@bloomington.in.gov>

Mon, Dec 11, 2023 at 10:41 AM

Korey,

This is something we'd be happy to take a look at. I'm including Karina Pazos who is the staff liaison for the Parking Commission. She'll be your point of contact and will help you get any answers and on the Parking Commission agenda. She's currently out for the holidays but will get in touch with you as soon as she gets back.

Feel free to let me know if you have any questions in the meantime.

Thanks,

Ryan

----- Forwarded message -----

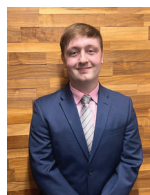
From: **Korey Alexander** <kalexander@sophimobility.com>
Date: Fri, Dec 8, 2023 at 1:47 PM
Subject: [Planning] Re: Valet parking permits
To: <planning@bloomington.in.gov>

Attached is the front of the hotel on the meters I was referring to that would transition into a valet/hotel loading zone.

Best Regards,

Korey Alexander
Operations Manager
SOPHI Mobility

☎ (574)-248-1991
🌐 www.sophimobility.com
✉ kalexander@sophimobility.com



On Fri, Dec 8, 2023 at 1:43 PM Korey Alexander <kalexander@sophimobility.com> wrote:
Hello to whom this may concern,

My name is Korey and I am the operations manager for SOPHI Mobility LLC. We are based out of South Bend and Indianapolis. We were currently scoping hotels in the Bloomington area that were interested in adding valet parking service for their guests. Specifically Springhill Suites was one interest.

I reached out to the city and was pointed in this direction to contact the parking commission. I didn't have any luck getting connected with the right person.

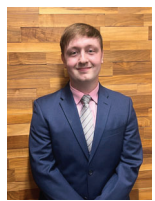
I was curious about what the process would be for us to service a hotel or restaurant in the area for permitting. This usually requires us to transition city meters into a valet loading zone. In particular we want to first see if we can service the Springhill Suites Bloomington. The address is [501 N College](#) and the meters would be at least the 4 if not 6 total spots including the 1 spot for the 15 min loading zone.

Just curious on if that's something the city would allow and what the process would be.

Thank you for your time! Feel free to give me a phone call whenever. Appreciate it. Hope to talk soon.

Best Regards,

Korey Alexander
Operations Manager
SOPHI Mobility



(574)-248-1991
 www.sophimobility.com
 kalexander@sophimobility.com

--

Ryan Robling

Planning Services Manager
Planning and Transportation
Direct: 812-349-3459
Office: 812-349-3423

Korey Alexander <kalexander@sophimobility.com> Mon, Dec 11, 2023 at 10:43 AM
To: Ryan Robling <roblingr@bloomington.in.gov>
Cc: Karina Pazos <karina.pazos@bloomington.in.gov>

Ryan,

Thank you for replying so quickly and giving me an update. Much appreciated. I look forward to hearing from Karina whenever she returns. Happy Holidays to you and your team!

Talk soon.

Best Regards,

Korey Alexander
Operations Manager
SOPHI Mobility

(574)-248-1991
 www.sophimobility.com
 kalexander@sophimobility.com



[Quoted text hidden]
[Quoted text hidden]

--

Ryan Robling

Planning Services Manager
Planning and Transportation
Direct: 812-349-3459
Office: 812-349-3423

Karina Pazos <karina.pazos@bloomington.in.gov>
To: Korey Alexander <kalexander@sophimobility.com>
Cc: Ryan Robling <roblingr@bloomington.in.gov>

Wed, Jan 17, 2024 at 5:10 PM

Hi Korey,

I'm going to go ahead and add this as a topic of discussion on the agenda for next week's Parking Commission meeting. Parking Commission meets every last or second to last Thursday of the month. The next meeting is next Thursday the 25th, 5:30 - 7pm and it is held in-person as well as virtually with the following Zoom link:
<https://bloomington.zoom.us/j/6359441221?pwd=bXRYTnNJV2xMbTRLLeE00QW9XWnRjQT09>

If you're able to attend, it would be great to hear your thoughts and further discuss any questions that might arise during the meeting. If you're not able to attend, then I will follow up with next steps after the meeting.

Thanks,
Karina

[Quoted text hidden]
--

	<p>Karina Pazos (she/her)</p> <p>Long Range Planner</p> <p>Planning and Transportation Department</p> <p>City of Bloomington, IN karina.pazos@bloomington.in.gov 812.349.3423 bloomington.in.gov</p>
---	---



Karina Pazos <karina.pazos@bloomington.in.gov>

No Parking Sign Request from Citizen

4 messages

Joy Brown <joy.brown@bloomington.in.gov>
To: Karina Pazos <karina.pazos@bloomington.in.gov>
Cc: Ryan Robling <roblingr@bloomington.in.gov>

Tue, Jan 16, 2024 at 1:53 PM

Hello Karina,

I received a call today from a citizen who wants to request residential no parking signage on his street. He called parking services first, was transferred to the Planning and Transportation Department, and ended up with me. I am not sure how the decision of where to put no parking signs is made within the City, but was told by Neil, Jackie, and Ryan this may be something under your purview or that you would know the correct person this should go to in parking services. The caller would like no parking signs on E Maxwell Ln to the east of S High Street. His name is Jim Julovich and phone number is 812-327-4702. I'm sure he'd be glad to discuss this further with the person in charge of making this sort of change.

Cheers,

Joy Brown (she/her)
Zoning Compliance Planner
Planning & Transportation Department
City of Bloomington, IN
joy.brown@bloomington.in.gov
812-349-3592 | bloomington.in.gov

Karina Pazos <karina.pazos@bloomington.in.gov>
To: Joy Brown <joy.brown@bloomington.in.gov>
Cc: Ryan Robling <roblingr@bloomington.in.gov>

Tue, Jan 16, 2024 at 2:18 PM

Thanks, Joy. I'll give them a call and find out the next steps.

[Quoted text hidden]

--

	<p>Karina Pazos (she/her) Long Range Planner Planning and Transportation Department City of Bloomington, IN karina.pazos@bloomington.in.gov 812.349.3423 bloomington.in.gov</p>
---	--

Karina Pazos <karina.pazos@bloomington.in.gov>
To: "julovich@yahoo.com" <julovich@yahoo.com>

Mon, Jan 22, 2024 at 4:19 PM

Hi Jim,

I'm looking more closely at E Maxwell Ln (on Google Maps) from Henderson to east of High St. Here are my initial notes:

- From Henderson to Woodlawn, there are curb bump-outs on the south side of the street at the intersections so that means it wouldn't make sense to add 'no parking' signs in that section of Maxwell. Additionally, one benefit of having this on-street parking is that it acts as traffic calming, meaning that drivers tend to drive slower when there are cars parked adjacent to them on a narrow street.
- From Woodlawn to Manor, there are 'no parking' signs on the north side of the street and there aren't any bump-outs on the south side of the street, but the right-of-way width is sufficient to allow for on-street parking (neighborhood permit required during certain times) for the purpose of traffic calming as well as having other on-street parking options for properties with limited parking.
- From Manor to Mitchell, there is also sufficient right-of-way width to allow for on-street parking for the purpose of traffic calming as well as having other parking options for properties with limited parking, due to lack of driveways for example. The on-street parking on this section also requires a neighborhood permit during certain times of the day/week.
- From Mitchell to High, I only see one 'no parking' sign but the right-of-way width is narrower in this section so I'm not sure if drivers are naturally discouraged from parking on this section of Maxwell and so the presence of 'no parking' signs might not be necessary here.
- East of High St, the right-of-way width is much narrower and I see one 'no parking' sign close to the intersection. Is this the section of Maxwell that you're concerned with on-street parking? I would assume that because the pavement is so narrow that drivers wouldn't really park on the street here, but if this is the section that you are seeing a lot of cars parked then I'm guessing drivers feel more comfortable doing so because it is much more residential and lower traffic volumes than the sections west of High St.

Please let me know which section of Maxwell St you are seeing an on-street parking issue and if you can send me pictures of the issue, that would help us better understand the situation as well.

Thank you,
Karina

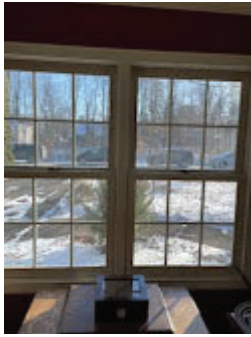
[Quoted text hidden]

James Julovich <julovich@yahoo.com>
To: Karina Pazos <karina.pazos@bloomington.in.gov>

Mon, Jan 22, 2024 at 4:40 PM

- East of High St, the right-of-way width is much narrower and I see one 'no parking' sign close to the intersection. Is this the section of Maxwell that you're concerned with on-street parking? I would assume that because the pavement is so narrow that drivers wouldn't really park on the street here, but if this is the section that you are seeing a lot of cars parked then I'm guessing drivers feel more comfortable doing so because it is much more residential and lower traffic volumes than the sections west of High St.

Yes, this is the street. There is a no parking sign on the corner, but people start parking 4 houses east of the no parking sign on both sides of the street including cutouts. If you would walk the side streets west of E. Maxwell, this area is equally more residential with lower traffic, but each street had no parking signs. It was only after walking diagonally toward mother bears did we see the volume of no parking signs in front of homes and on streets. Really Karina, all we would like is to have equal consideration like these other streets that don't have cars parked on their streets on a daily basis. I have enclosed a picture; this is what it looks like twice a day, every day. Please see what can be done. Thank you so much! Jim Julovich



IMG_4806.jpg
47K

