



# City of Bloomington Common Council

## Legislative Packet – Addendum

Posted on Wednesday, 27 March 2024

Wednesday, 27 March 2024

Regular Session at 6:30 pm

# NOMINATION

## Lower Cascades Historic District

# Nomination: HD 23-01

STAFF RECOMMENDATION

SUMMARY

CONTRIBUTING



- Address: Lower Cascades
- Petitioner: HPC

Image source: [https://www.wbiw.com/2022/09/09/celebrate-lower-cascades-park-on-sunday-sept-18/#google\\_vignette](https://www.wbiw.com/2022/09/09/celebrate-lower-cascades-park-on-sunday-sept-18/#google_vignette)

# CRITERIA

## 1) Historic:

- a) Has significant character, interest, or value as part of the development, heritage, or cultural characteristics of the city, state, or nation; or is associated with a person who played a significant role in local, state, or national history;  
or
- b) Is the site of an historic event; or
- c) Exemplifies the cultural, political, economic, social, or historic heritage of the community.

## 2) Architectural:

- a) Embodies distinguishing characteristics of an architectural or engineering type; or
- b) Is the work of a designer whose individual work has significantly influenced the development of the community; or
- c) Is the work of a designer of such prominence that such work gains its value from the designer's reputation; or
- d) Contains elements of design, detail, materials, or craftsmanship which represent a significant innovation; or
- e) Contains any architectural style, detail, or other element in danger of being lost; or
- f) Owing to its unique location or physical characteristics, represents an established and familiar visual feature of the city; or
- g) Exemplifies the built environment in an era of history characterized by a distinctive architectural style

# Background

“The district’s hydrology centers on Cascades Creek which is located in the bottomlands. The stream flows north and drains into Griffy Creek approximately a half-mile north of the district. The stretches of Cascades Creek that are within the district have been channelized and its bottom is primarily bedrock. The creek’s minor tributaries drain the uplands and valley slopes, and cut to the bedrock resulting in outcroppings and small waterfalls (NRHP NOMINATION).”

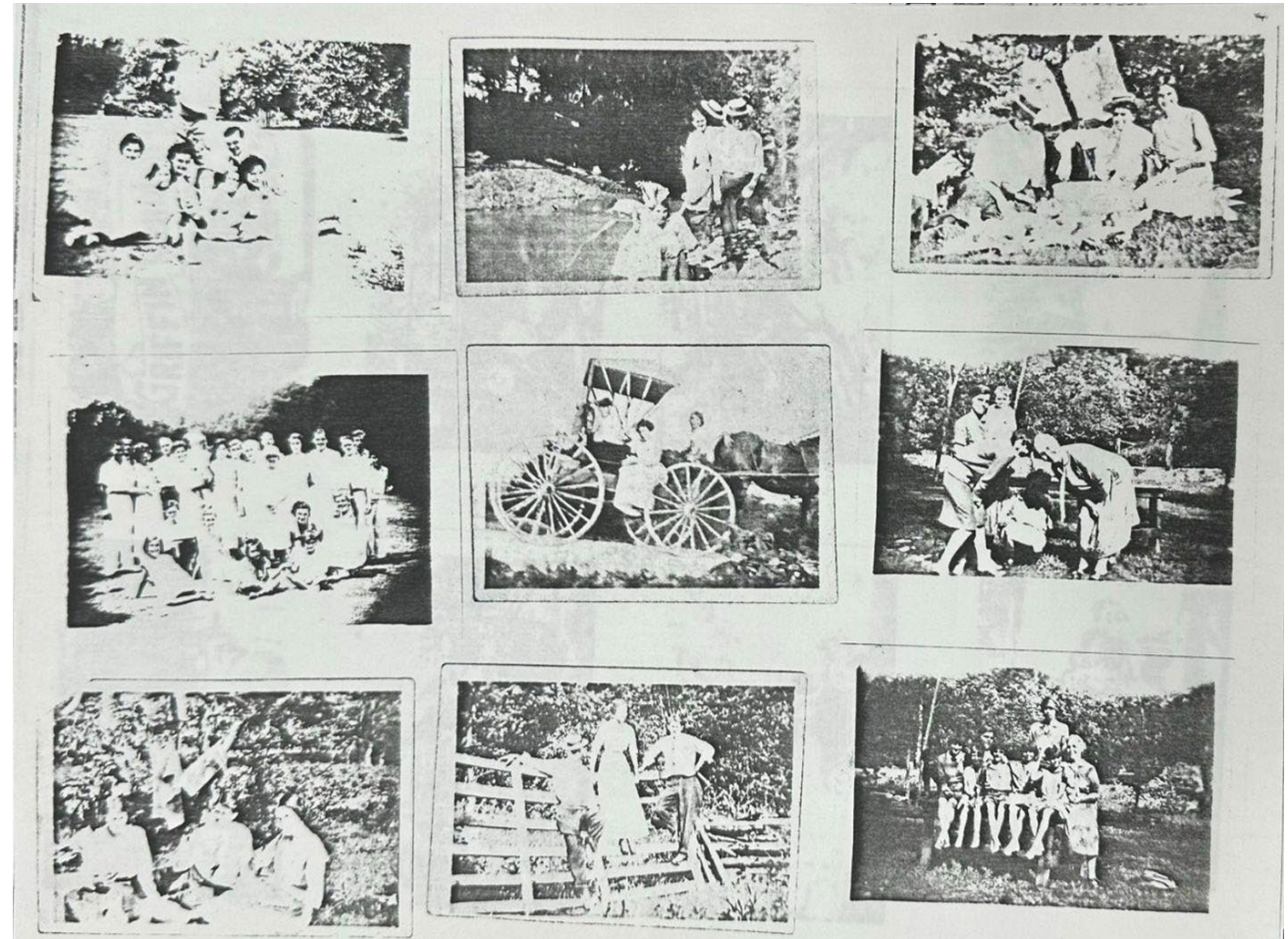


Image source: MCHC archives

# Background

“The district’s hydrology centers on Cascades Creek which is located in the bottomlands. The stream flows north and drains into Griffy Creek approximately a half-mile north of the district. The stretches of Cascades Creek that are within the district have been channelized and its bottom is primarily bedrock. The creek’s minor tributaries drain the uplands and valley slopes, and cut to the bedrock resulting in outcroppings and small waterfalls (NRHP NOMINATION).”

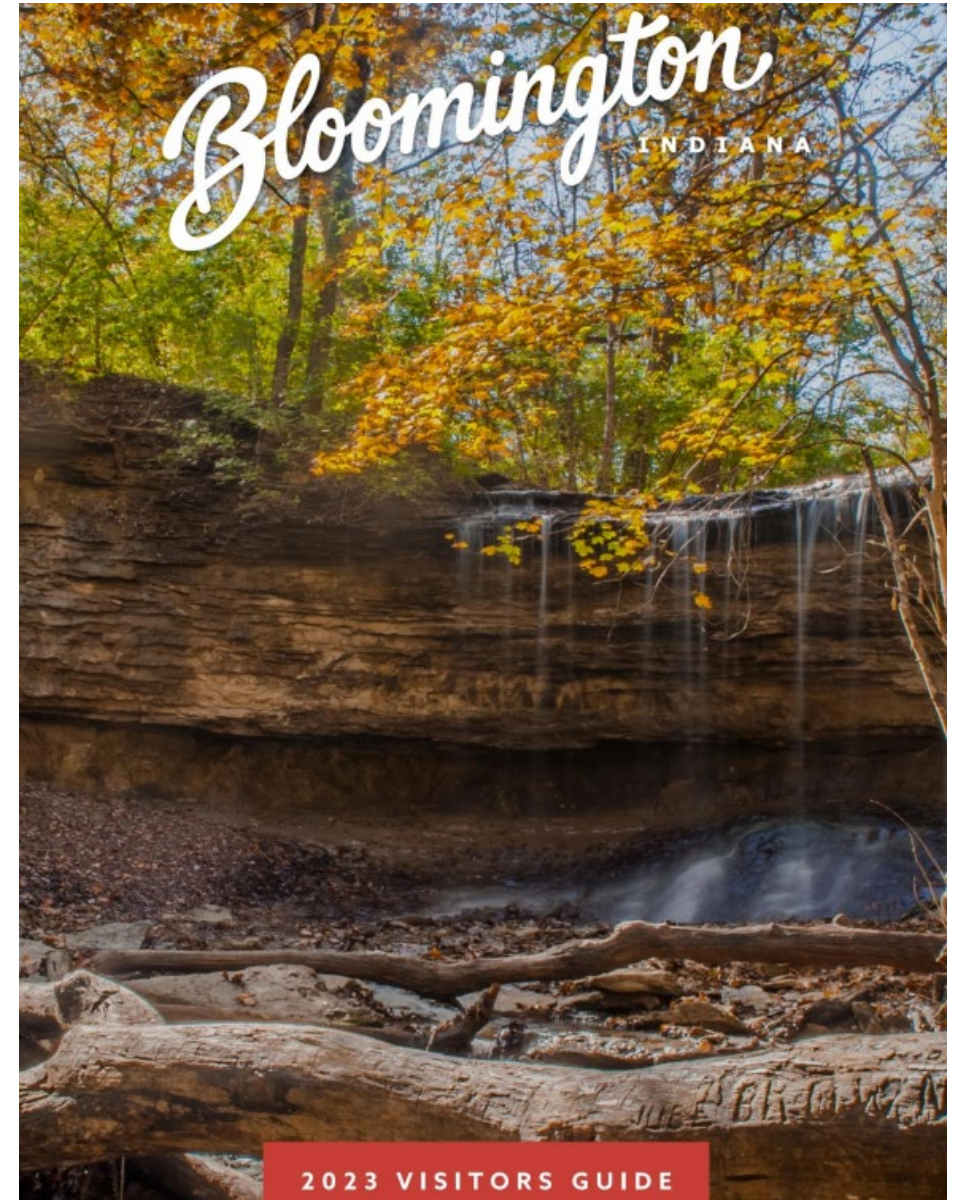


Image source: Bloomington Visitor's guide

“The park contains Works Progress Administration (WPA) constructed resources: stream retaining walls, two shelters, a well house, 29 stone picnic tables, a campfire circle, and three wishing well drinking fountains. Except for certain portions of the stream’s retaining walls, the WPA resources are primarily constructed with rusticated limestone ashlar (e.g. blocks) laid in a common bond and represents the WPA’s use of regional materials in its projects.”



From the Visitor’s Guide

## Historic surveys rating and designations:

The Lower Cascades is currently going through the nomination process to be included in the National Register of Historic Places as part of a larger district that also includes the golf courses and the Upper Cascades.

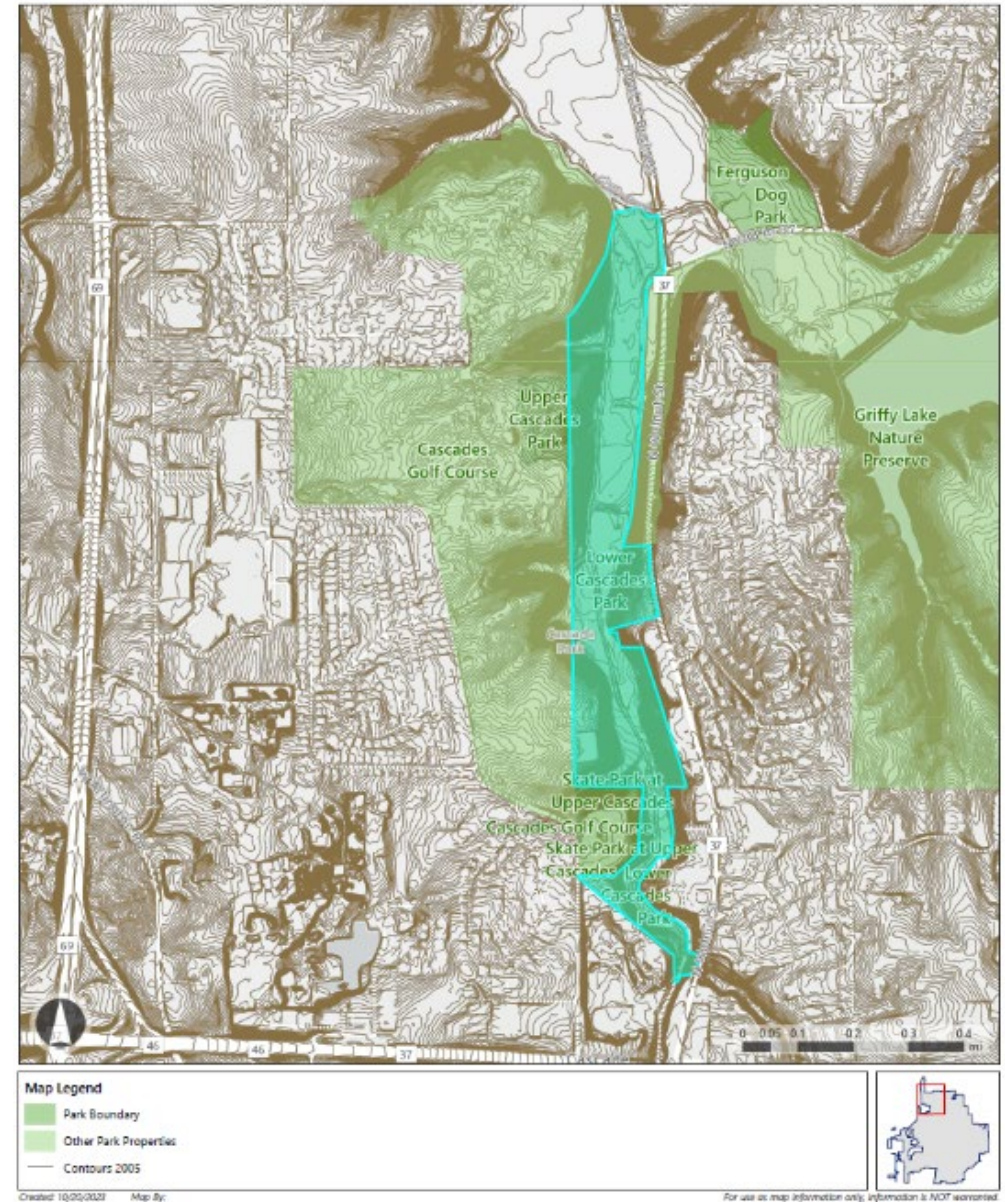
The following ratings are based on the HALS survey and the National Register of Historic Places Nomination prepared by Christopher Baas and J.P. Hall for the Parks and Recreation Department in 2021.

## Contributing:

- Monroe County Bridge # 413, 1926.
- 4 Metal/Concrete Pedestrian Bridges, c. 1960's.
- 24 limestone picnic tables, WPA Rustic, c.1936.
- Wishing Well Drinking Fountain, WPA Rustic, 1936.
- Waterfall Shelter, WPA Rustic, 1936.
- Well House, WPA Rustic, 1936.
- Limestone Benches, WPA Rustic, c. 1936. Contributing. (structure)
- Concrete Pedestrian Bridge, c. 1935, Contributing. (structure)
- Cascade Park Bath House (Sycamore Shelter), WPA Rustic, 1938

## Non-Contributing:

- Pedestrian Bridge, 2000's.
- Playground (southeast of the Sycamore Shelter and west of the Cascades Creek), c. 1980s.
- Playground, modern east of Cascades Creek and Old State Road 37). 2006.



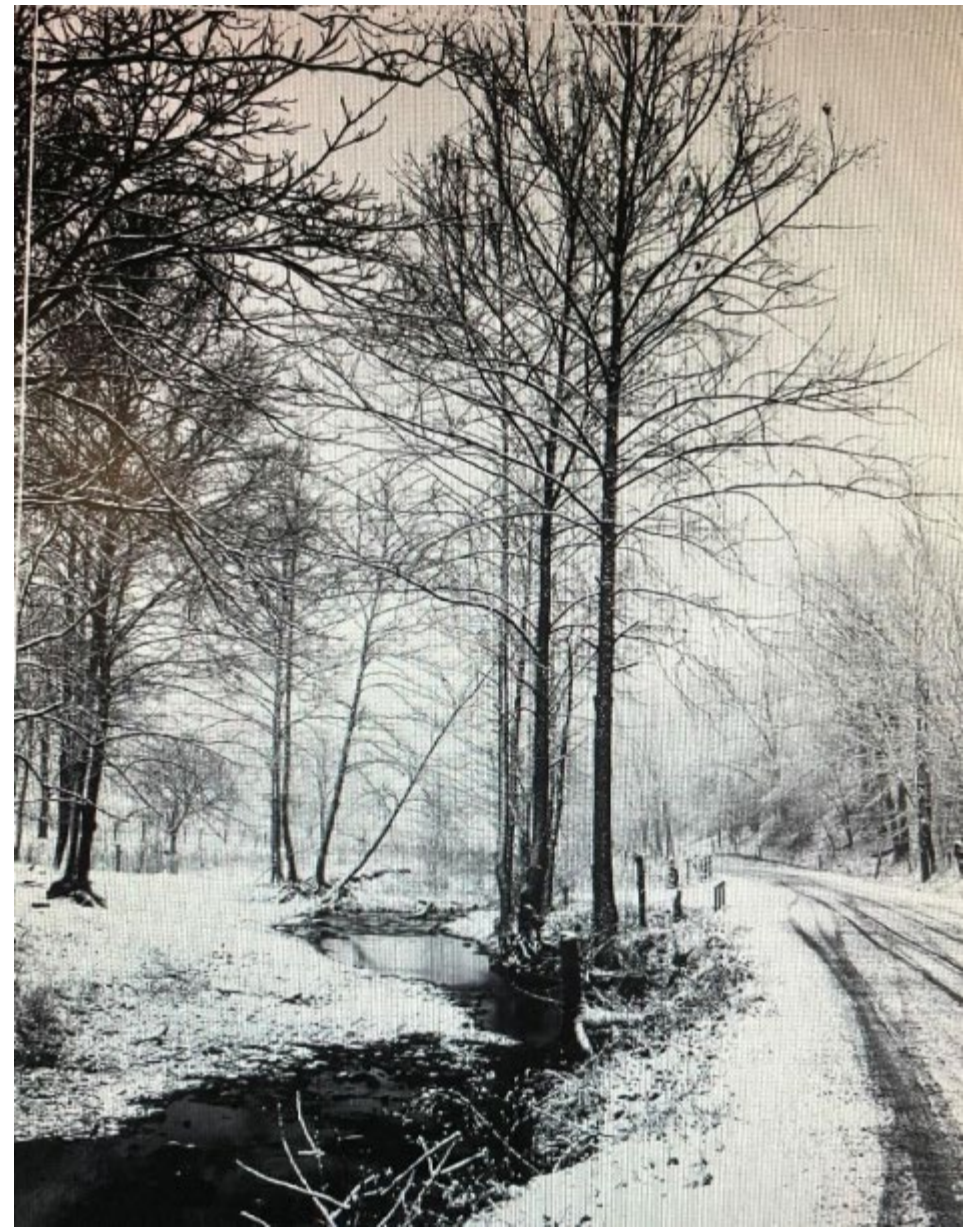
Created: 10/02/2023 Map By:

For use as map information only, information is NOT guaranteed



**1(a) Has significant character, interest, or value as part of the development, heritage, or cultural characteristics of the city, state, or nation; or is associated with a person who played a significant role in local, state, or national history; or**

The natural geographic beauty of the area led to the creation of the Cascades Park by the City of Bloomington in 1924. James Coffman wrote in his thesis titled *Cascades Park : a preservation and recreation development plan, Bloomington, Indiana* “The original intent was to preserve a naturally beautiful site.”



From Blue Ridge Mini - Documentary

**1(c) Exemplifies the cultural, political, economic, social, or historic heritage of the community.**

The Lower Cascades Park has been maintained by the City of Bloomington and enjoyed by both its residents and visitors alike for almost 100 years. During this time countless memories, picnics, races, and peaceful days have been enjoyed by community members. The history of the Cascades Park has been documented in different articles, documentaries, and even a masters thesis in 1984. In 1997 *BRI News* published an article providing information on the history of the Cascades Park stating that “In 1921, however, the owners of the stone and gravel quarry at the southern edge of the cascades planned to expand it northward, along the highway and creek bed. In response, the city’s first park board was established and chartered to protect the “beauty spot of the southern part of the state (BRI 1997, 1).”



## 2(g) Exemplifies the built environment in an era of history characterized by a distinctive architectural style

The WPA structures including the two shelters, picnic tables, and wishing wells were built during the 1930's as part of the federal initiatives to alleviate the economic hardships affecting the entire population during the Great Depression. The City of Bloomington qualified for funds due to the economic impact felt directly by the quarries and other industries. Funds were requested for different initiatives throughout Bloomington but a sizable portion was allocated to the construction of various structures in both the Upper and Lower Cascades including the two main roofed activity structures, picnic tables, and wishing wells, amongst others.



Image 3: Waterfall Shelter House, looking southwest.

Shelter - Turner Falls State Park - Oklahoma

The carping critic may well skip this subject unless he would merely praise for beauty. The free-hand lines of the shingle courses doubled every fourth or fifth course for scale and accent, the well-sealed pole rafter ends, the rugged informality and textural quality of the stone work, the batter of the wall - all combine to the success of this structure.

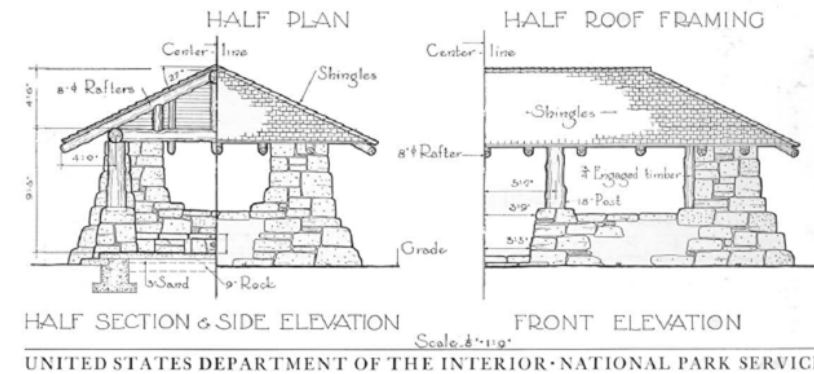
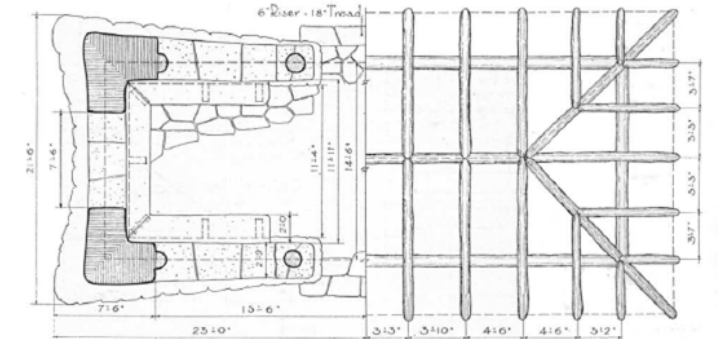




Image 3: Waterfall Cascades (Sycamore) Shelter House, looking southwest.



Image 4: Sycamore Shelter



Image 5: Well House, looking southwest.



Image 6: Limestone bench southeast of the Sycamore Shelter, looking east.



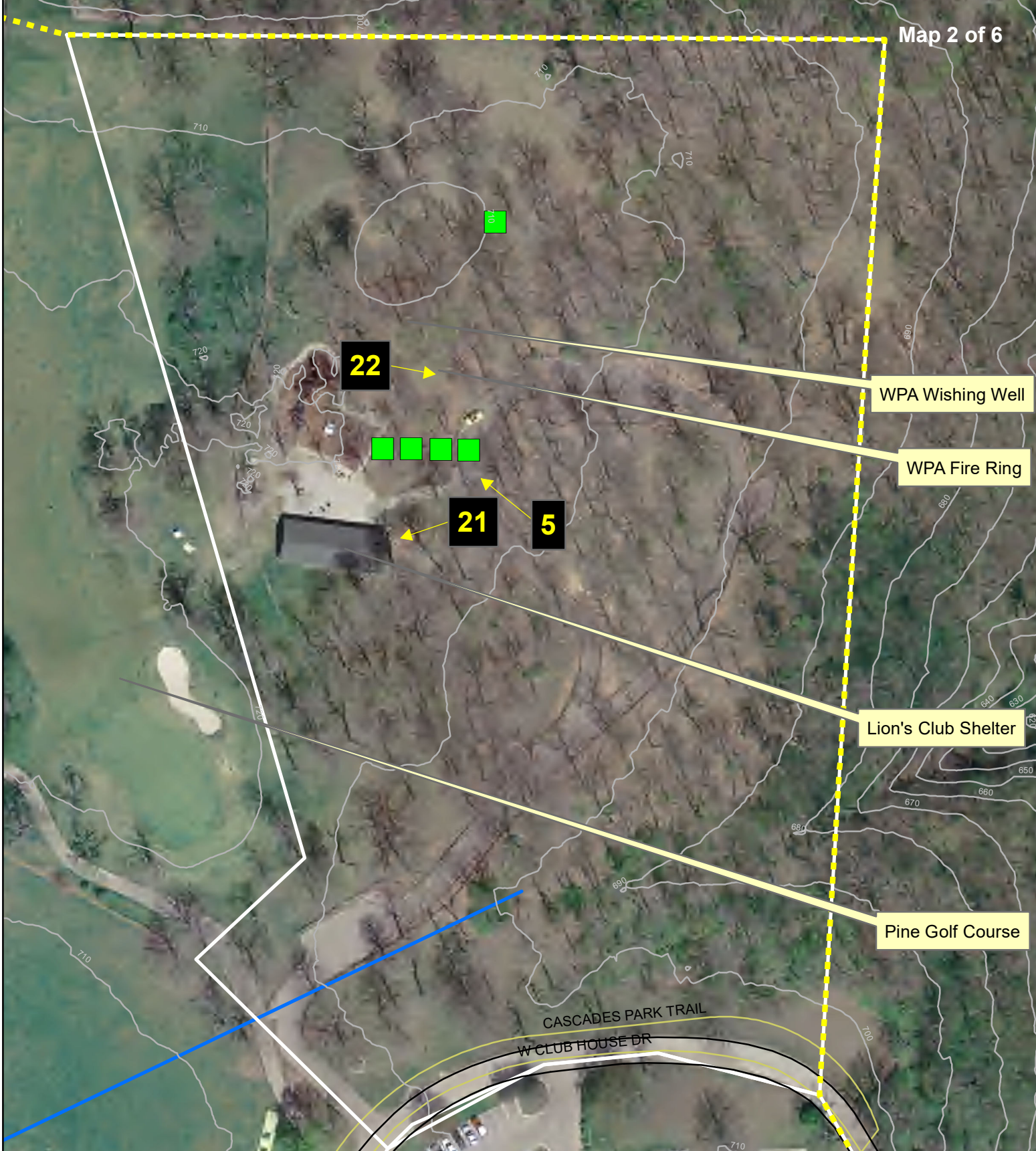
Image 7: Concrete Pedestrian Bridge, looking southwest





Image 8: Stone Picnic Tables





### Lion's Club Shelter--Upper Cascades

Cascades Park Historic Landscape District  
Bloomington, Indiana

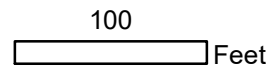
National Register Photo Locations

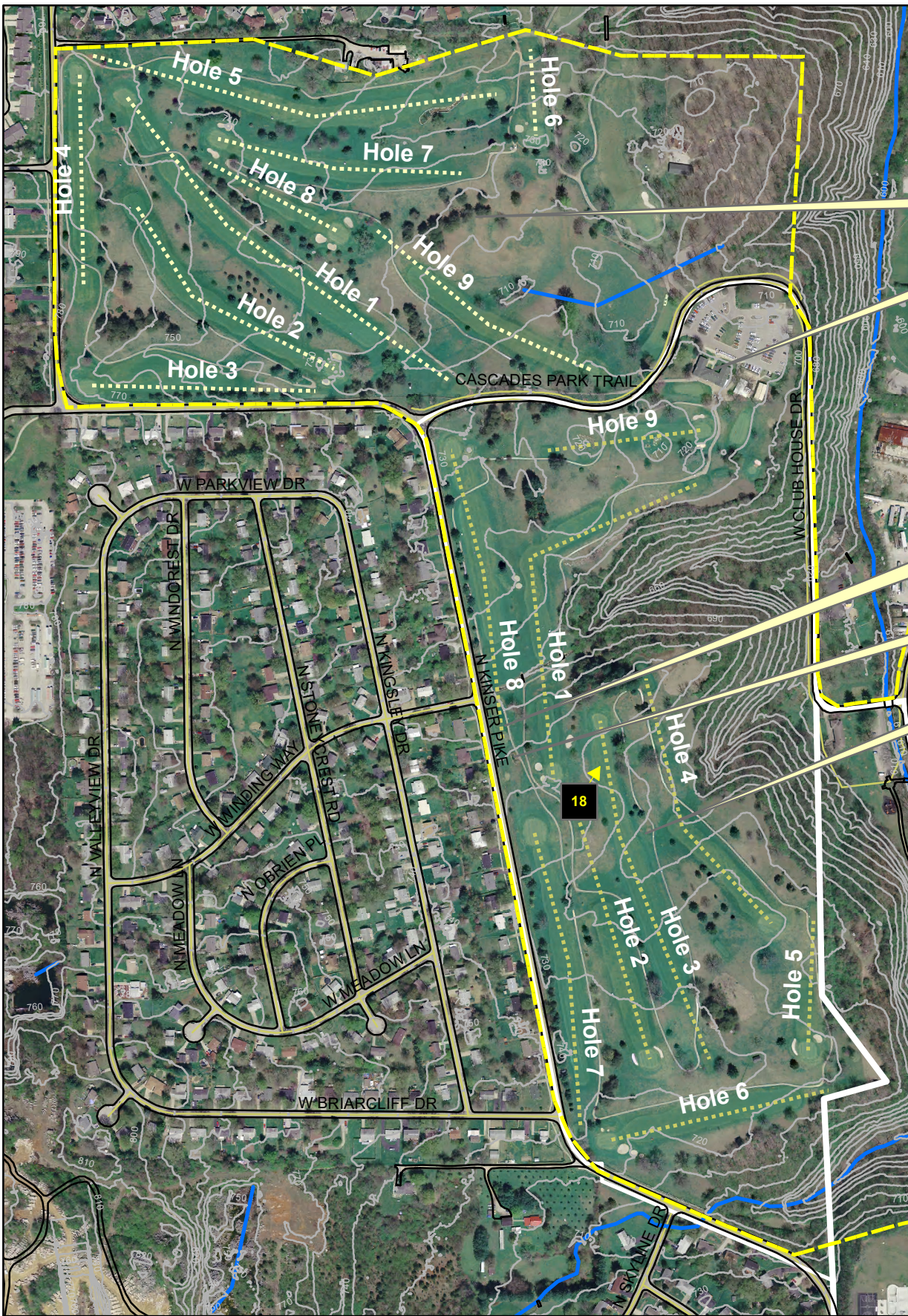
1

### Legend

- Picnic Tables
- Historic District Boundary
- 10-foot Contours
- Streams

1 inch = 100 feet





Pine Golf Course

Club House

Location of Original Club House

Eddie Lawson Memorial

Quarry Golf Course






### Pine and Quarry Golf Courses-Upper Cascades

Cascades Park Historic Landscape District  
Bloomington, Indiana  
Historic American Landscape Survey

Large Format Photography  
Location and Direction

1

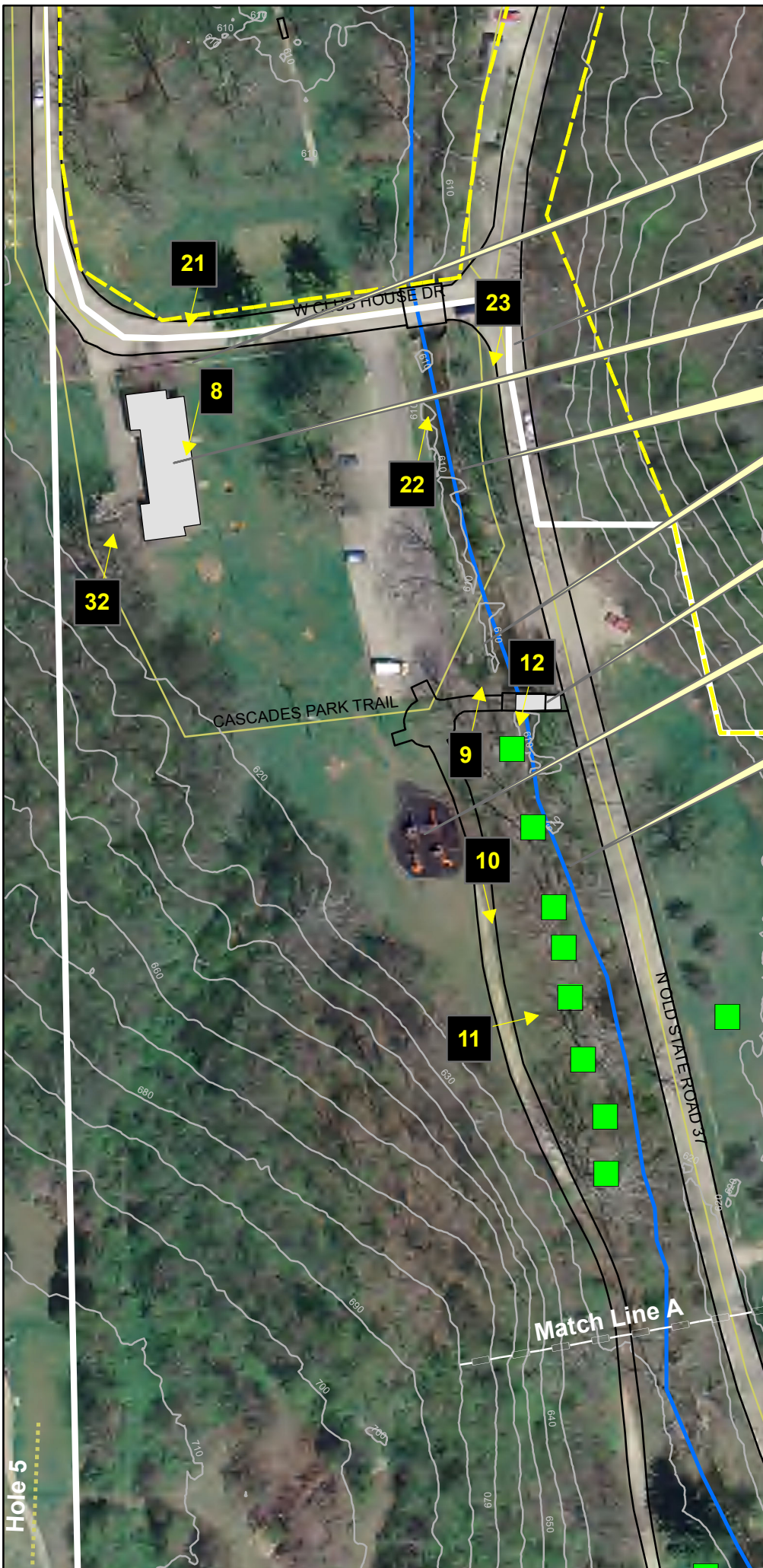
### Legend

-  National\_Register\_Boundary
-  Pine GC Layout
-  Quarry GC Layout
-  10-foot Contours
-  Streams

1 inch = 500 feet  
1,000

Feet





Concrete Retaining Wall

Historic Park Entrance

WPA Sycamore Shelter

WPA Constructed Stone Retaining Walls Along Cascades Creek

WPA Wishing Well

Pedestrian Bridge

Playground

Cascades Creek


Sycamore Shelter Section--Lower Cascades

Cascades Park Historic Landscape District  
Bloomington, Indiana  
Historic American Landscape Survey

Large Format Photography  
Location and Direction

1

### Legend

 National\_Register\_Boundary

 WPA Picnic Tables

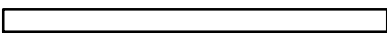
 10-foot Contours

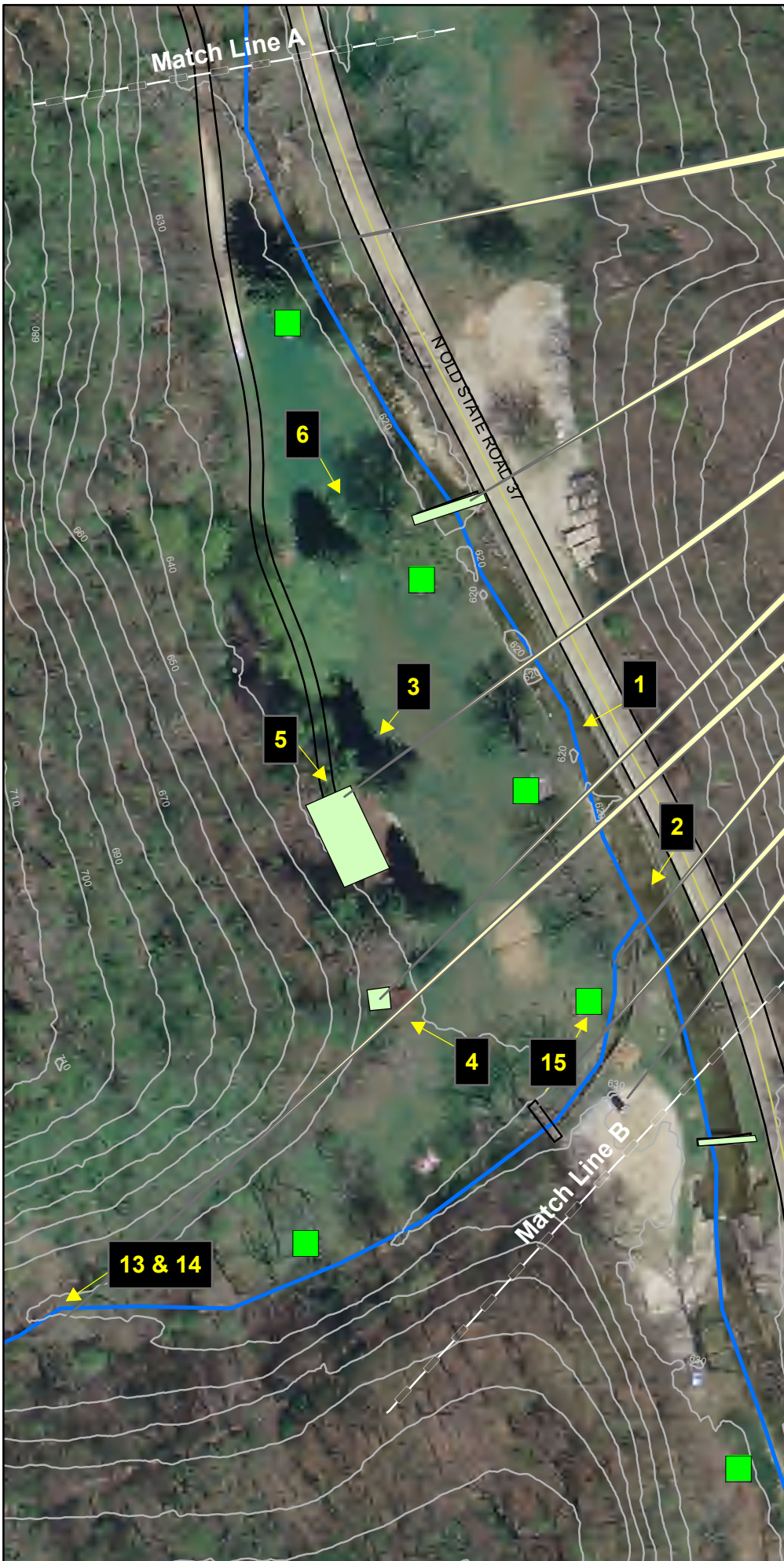
 Streams



1 inch = 100 feet

200

 Feet



- Cascades Creek
- Pedestrian Bridge
- WPA Waterfall Shelter
- WPA Well House
- Waterfall
- Tributary
- Pedestrian Bridge
- Parking Lot

**Waterfall Shelter Section--Lower Cascades**  
**Cascades Park Historic Landscape District**  
**Bloomington, Indiana**  
**Historic American Landscape Survey**

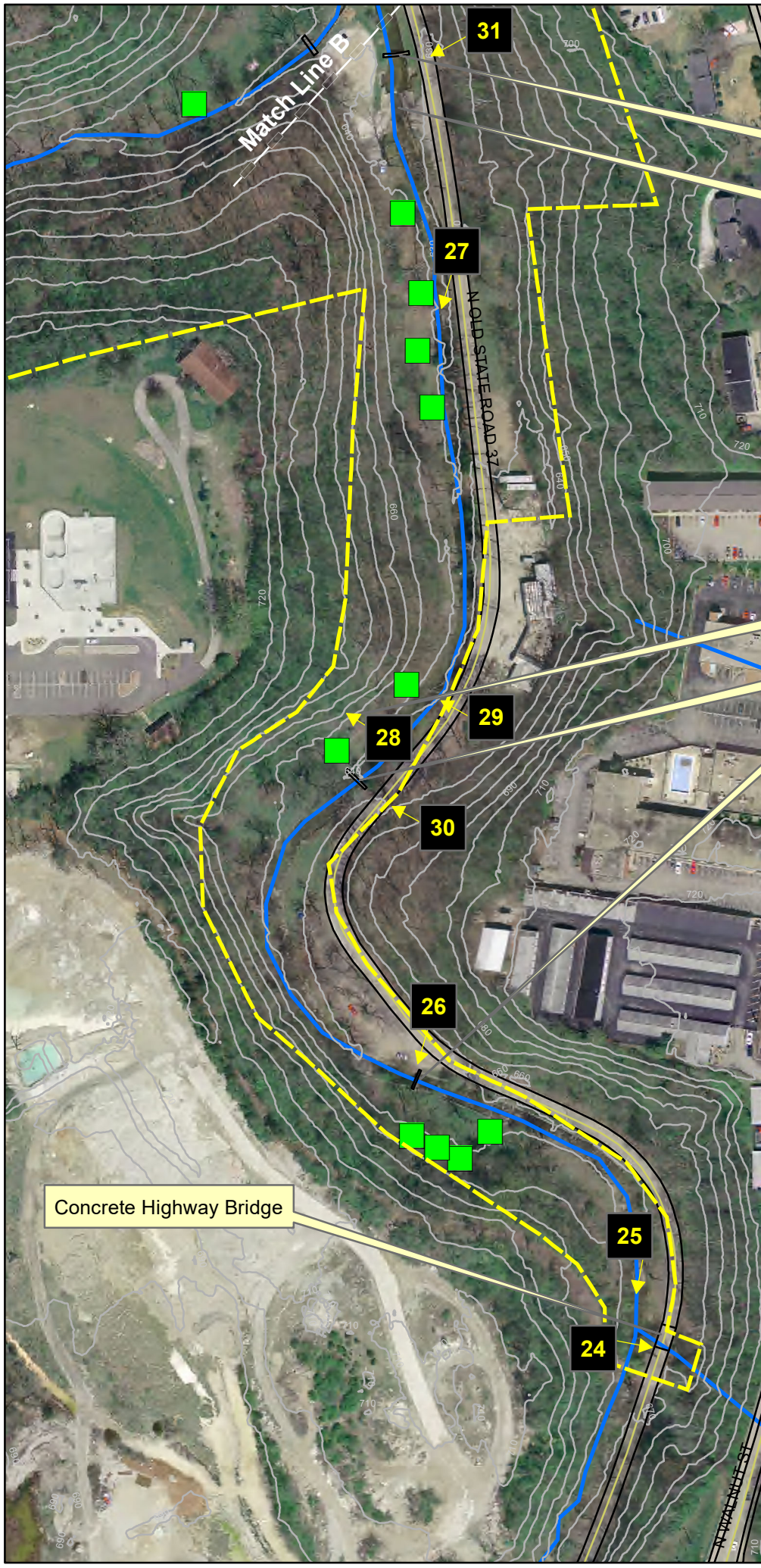
Large Format Photography Location and Direction **1**

**Legend**

- District Boundary
- Picnic\_Tables
- 10-foot Contours
- Streams



1 inch = 100 feet  
 200  
 Feet



Pedestrian Bridge

Low Water Crossing

WPA Wishing Well

Pedestrian Bridge

Pedestrian Bridge

**Highway Bridge Section--Lower Cascades**

**Cascades Park Historic Landscape District  
Bloomington, Indiana  
Historic American Landscape Survey**

Large Format Photography  
Location and Direction **1**

**Legend**

District Boundary

Picnic Tables

10-foot Contours

Streams

Concrete Highway Bridge



1 inch = 200 feet

400

Feet

**\*\*\* Amendment Form \*\*\***

**Resolution #:** 2024-04  
**Amendment #:** Am 01  
**Submitted By:** Cm. Stosberg  
**Date:** March 27, 2024

**Proposed Amendment:**

1. Resolution 2024-04 shall be amended by inserting the “Whereas” clauses shown below before the last Whereas clause:

WHEREAS, Indiana does not have a comprehensive water management plan to guide consumers, government entities, utilities, and other stakeholders when faced with questions or concerns regarding allocation of water resources between entities; and

WHEREAS, water is a limited and essential resource, and following a set of best practices for water resource management is the best chance to foster cooperation between neighboring entities and to avoid larger water wars; and

2. Resolution 2024-04 shall be amended by inserting a new Section 2 and renumbering subsequent sections accordingly. The new Section 2 shall read as follows:

SECTION 2. The City of Bloomington encourages the Indiana General Assembly, with meaningful opportunities for public involvement, establish a comprehensive water management plan.

**Synopsis**

This amendment inserts two additional Whereas clauses to highlight the issue of water resource management within the State, as well as adds a new Section 2 to encourage the Indiana General Assembly establish a state-wide comprehensive water management plan.

**03/27/24 Regular Session Action:** Pending