

## **Report of the Common Council Sidewalk Committee January 18, 2006**

### **Committee Members and Staff**

The members of the 2006 Committee were appointed by the President of the Council in 2005 and included:

- Tim Mayer, At-Large (Chair)
- David Rollo, District 4
- Chris Sturbaum, District 1
- Steve Volan, District 6

The committee members were assisted by the following persons:

#### **Council Office**

Dan Sherman, Council Administrator/Attorney

Stacy Jane Rhoads, Assistant Administrator

#### **Public Works**

Julio Alonso, Director

Justin Wykoff, Manager of Engineering Services

#### **Planning**

Scott Robinson, Long Range / Transportation Manager

Raymond Hess, Transportation Planner

Russell White, Zoning Compliance Planner

#### **HAND**

Bob Woolford, Housing Coordinator

#### **Parks and Recreation**

Steve Cotter, Natural Resources Manager

### **Schedule and Topics of Meetings**

The Committee met five times in the fall of 2005 in the course of making its recommendations for funding allocations in 2006. Here is a brief overview of what occurred at those meetings (the memoranda of which are available in the Council Office):

#### **October 5<sup>th</sup> and October 17<sup>th</sup>, 2005 at noon in the McCloskey Room**

- Elected a Chairperson (Tim Mayer);
- Requested the Council Office to make a record of the meetings;
- Reviewed money available in the Alternative Transportation Fund for 2006 (this money derives from neighborhood parking revenues that

- are in excess of program expenses and was increased from \$185,000 to \$200,000 in 2006)
- Discussed sidewalk standards (in particular the INDOT ramp regulations);
  - Reviewed previous allocations and projects (see Chart);
  - Reviewed other recent, ongoing, or future sidewalk projects and heard presentations from:
    - Planning (e.g. revising the Greenways Plan)
    - Parks and Recreation (Southeast Park Trail, Lower Cascades Park, Renwick, CSX Corridor, Jackson Creek Trail, and Thomson Park)
    - HAND (various projects in targeted neighborhoods including Broadview and upper Westside areas)
    - Public Works (Hazard Elimination and Safety Fund projects at 17<sup>th</sup> and Fee Lane and Basswood and West Second Street)
  - Reviewed the Sidewalk Inventory;
  - Reviewed and affirmed a statement of criteria for selecting sidewalk proposals that include:
    - Safety considerations, Roadway classification, Pedestrian usage, Proximity to points of destination, and Costs/feasibility.
  - Discussed the role of City of Bloomington Utilities in funding some projects with Nathan Schulte.
  - Began receiving estimates and reviewing proposed projects in the following order:
    - Continuation of previously funded projects
    - Extension of previously funded projects
    - Other previously discussed projects
    - Reconsideration of previously denied projects
    - New projects

**November 14<sup>th</sup> and December 5<sup>th</sup>, 2005 at noon in the McCloskey Room:**

- Continued receiving estimates and reviewing proposed projects
- Heard from Todd Thompson, a property owner on North Kinser, advocating for the sidewalk project on North Kinser being reconsidered by the Committee after a denial last year.

**December 12, 2005 at noon in the McCloskey Room to:**

- Recommended allocation of \$153,239.47 to fund the construction of two projects (on Queensway and Roosevelt) and \$30,000 for the design of four projects (on Maxwell Lane, Arden, East Second, and East 11<sup>th</sup>) (See Recommendations and Chart for further details).

- Found that stormwater costs amount to about half of these sidewalk project costs and are the primary constraint on completion of many of them. Discussed sharing labor and material and perhaps dedicating a small portion of stormwater revenues as a means to move these projects along.
- Approved the minutes from the October 3<sup>rd</sup> and 17<sup>th</sup>, 2005 and delegated the approval of the minutes for the remaining meetings to the President after review and comment by members.
- Agreed to submit the Sidewalk Report to the Council by mid-January, 2006; and
- Agreed to meet by early February in order to explore:
  - 4) how the Committee might better partner with CBU to address the stormwater component of sidewalk projects; and
  - 4) how to make the Committee more efficient given the amount of money it allots and the time and resources it takes to make that decision.
- Agreed to meet in mid-September to begin the deliberations for 2007.

### **Highlights of Committee Deliberations**

#### Alternative Transportation Fund – 2006 – Increased from \$185,000 to \$200,000

The Committee makes recommendations regarding the use of the Alternative Transportation Fund (ATF), which is funded primarily by surplus revenues from the Neighborhood Parking Program (BMC 15.37.160). This year those funds were increased from \$185,000 to \$200,000. Please see the recommendations below for information regarding the 2006 allocations and fund balances.

#### Review of Proposals

The Committee deliberations regarding sidewalk proposals are summarized in the attached chart of Recommendations for Use of Alternative Transportation Funds for 2006. After reviewing the status of previously funded projects, the committee considered proposals for funding in the following order: continuation of previously funded projects; Extension of previously funded projects; Previously discussed but unfunded projects; Reconsideration of previously denied projects; and New projects. At the end of the deliberations, the Committee was faced with requests of around \$2 million in sidewalks and about \$185,000 in funding. Given this gap between requests and funding, it recommending:

- funding the construction of two projects on Queens Way and Roosevelt,
- funding design for four projects on Maxwell Lane, Arden Drive, East 2<sup>nd</sup> and East 11<sup>th</sup> Street;
- awaiting design work for Marilyn Drive and the availability of other funding for Jefferson Street; and
- not funding the remaining ones.

Issues for Attention Early in 2006

The Committee decided to meet early in 2006 to find ways to move projects with a large stormwater component forward and to streamline the decision-making process.

Committee Recommendations:

After five meetings the Committee made the following Recommendations:

1. **Allocate the \$200,000 of Alternative Transportation Funds appropriated in 2006 in the following manner:**

<b>\$200,000</b>	<b>Annual Appropriation</b>
<b>- \$15,000</b>	<b>Traffic Calming</b>
<b>\$185,000</b>	<b>Sidewalk Projects</b>

2. **Fund the following projects:**

**Construction – Queens Way and Roosevelt - 53,239.47**

- **Queens Way - Sussex to High (south side) -- \$25,969.68**  
- It is the missing link connecting High to Renwick and does not have a large storm water component.
- **Roosevelt Street - Fourth to Fifth (east side) -- \$127, 269.79 (with curbs on the opposite of the street)**  
- This project ties in with the recent improvements made by the private sector (Doug McCoy), which make this a through-street.

**Design Only – Maxwell Lane, Arden, East Second & East Eleventh -**

**\$30,000** The Committee agreed to initiate design of the following projects in the interest of furthering them along. The total project costs noted below include design and construction of the sidewalk.

- **East Maxwell Lane – Highland to Sheridan (north side) - \$10,000**  
 Total Project Cost: Two blocks - \$138,138.86  
 - This project would complete missing links on Maxwell Lane between Henderson and High Street.
  
- **Arden – From High to Windsor (south side) -- \$5,000;**  
 Total Project Cost: Two blocks - \$59,486.72  
 - This project provides a safe walk way for the neighborhood's many children.
  
- **East Second Street - Woodcrest to 300' east (north side) - \$5,000;**  
 Total Project Costs: Half a block - \$31,574.66  
 - This project is the missing link on the north side of the street from College Mall to the west.
  
- **East Eleventh Street – Washington to Lincoln (north side) - \$10,000**  
 Total Project Cost: One block - \$60,151.41  
 - This project would install a missing sidewalk in the urban core area.

*Note: At the end-of-the-year, Justin indicated to the Council Office that there was a shortfall in funding for projects bid-out or constructed in 2005, but that the Greenways fund will be able to cover the shortfall by applying funds to the Nancy Street project because it is on the Greenways Plan.*

# Queens Way

High Street to Sussex Drive

<i>Item</i>	<i>Quantity</i>	<i>Unit</i>	<i>Unit Price</i>	<i>Total Price</i>
Mobilization and Demobilization	1	EA	\$4,000.00 / EA	\$4,000.00
B Borrow for Structural Backfill		CYS	\$26.00 / CYS	
Bituminous Base		Ton	\$30.00 / Ton	
Bituminous Material for Tack		Ton	\$105.00 / Ton	
Bituminous Overlay (2" x 12')		LF	\$5.42 / LF	
Bituminous Surface		Ton	\$37.00 / Ton	
Bituminous Surface Milling		SYS	\$2.00 / SYS	
Pedestrian Bridge (20 feet)		EA	\$10,000.00 / EA	
Casting, Adjust to Grade	2	EA	\$500.00 / EA	\$1,000.00
Casting, Storm Inlet/Manhole		EA	\$1,800.00 / EA	
Cement Concrete Pavement 7"		SF	\$4.50 / SF	
Comp. Agg. No. 53	90	Ton	\$10.00 / Ton	\$900.00
Compacted Agg. for Base		Ton	\$16.80 / Ton	
Compacted Agg. for Shoulder		Ton	\$13.25 / Ton	
Concrete Curb and Gutter		LF	\$18.00 / LF	
Concrete Curb, Type B	330	LF	\$15.00 / LF	\$4,950.00
Construction Sign, Type A		EA	\$50.00 / EA	
Excavation, Common	120	CYS	\$18.00 / CYS	\$2,160.00
Sodding	270	SYS	\$5.00 / SYS	\$1,350.00
Guard Rail, w-beam, 6'-3" spc.		LF	\$48.00 / LF	
Perforated Pipe, Plastic 6"		LF	\$3.00 / LF	
Reinforcing Steel - Epoxy		CYS	\$0.60 / CYS	
Right of Way		SF	\$2.50 / SF	
Roadway Loop, Cable 1C/14		LF	\$0.45 / LF	
Roadway Loop, Saw and Seal		LF	\$11.00 / LF	
Roll Curb		LF	\$16.00 / LF	
Sidewalk, 4'		LF	\$15.00 / LF	
Sidewalk, 5'	300	LF	\$22.00 / LF	\$6,600.00
Stop Signs		EA	\$150.00 / EA	
Storm Sewer, 12"		LF	\$25.00 / LF	
Storm Sewer, 18"		LF	\$30.00 / LF	
Storm Sewer, 24"		LF	\$35.00 / LF	
Storm Sewer, 36"		LF	\$40.00 / LF	
Street Tree Removal		EA	\$1,000.00 / EA	
Street Trees	6	EA	\$150.00 / EA	\$900.00

**Subtotal:** \$21,860.00

**Additional 10%:** \$2,186.00

**Design:** \$1,923.68

**Total Estimate:** \$25,969.68



## Roosevelt Street

4th Street to 5th Street (East Side)

<i>Item</i>	<i>Quantity</i>	<i>Unit</i>	<i>Unit Price</i>	<i>Total Price</i>
Mobilization and Demobilization	1	EA	\$5,000.00 / EA	\$5,000.00
B Borrow for Structural Backfill	60	CYS	\$26.00 / CYS	\$1,560.00
Bituminous Base		Ton	\$30.00 / Ton	
Bituminous Material for Tack		Ton	\$105.00 / Ton	
Bituminous Overlay (2" x 12')		LF	\$5.42 / LF	
Bituminous Surface	100	Ton	\$37.00 / Ton	\$3,700.00
Bituminous Surface Milling		SYS	\$2.00 / SYS	
Brick Pavers		SF	\$8.50 / SF	
Casting, Adjust to Grade		EA	\$500.00 / EA	
Casting, Storm Inlet/Manhole	12	EA	\$1,800.00 / EA	\$21,600.00
Cement Concrete Pavement 7"	1980	SF	\$4.50 / SF	\$8,910.00
Comp. Agg. No. 53	140	Ton	\$10.00 / Ton	\$1,400.00
Compacted Agg. for Base		Ton	\$16.80 / Ton	
Compacted Agg. for Shoulder		Ton	\$13.25 / Ton	
Concrete Curb and Gutter		LF	\$18.00 / LF	
Concrete Curb, Type B	906	LF	\$15.00 / LF	\$13,590.00
Construction Sign, Type A	6	EA	\$50.00 / EA	\$300.00
Excavation, Common	252	CYS	\$18.00 / CYS	\$4,536.00
Saw Cut (Pavement)	800	LF	\$2.20 / LF	\$1,760.00
Retaining Wall		SF	\$15.00 / SF	
Perforated Pipe, Plastic 6"		LF	\$3.00 / LF	
Reinforcing Steel - Epoxy		CYS	\$0.60 / CYS	
Right of Way		SF	\$2.50 / SF	
Nursery Sodding	800	SYS	\$6.00 / SYS	\$4,800.00
Topsoil	120	Ton	\$18.00 / Ton	\$2,160.00
Roll Curb		LF	\$12.00 / LF	
Sidewalk, 4'		LF	\$15.00 / LF	
Sidewalk, 5'	413	LF	\$22.00 / LF	\$9,086.00
Stop Signs		EA	\$150.00 / EA	
Storm Sewer, 12"	600	LF	\$25.00 / LF	\$15,000.00
Storm Sewer, 18"	110	LF	\$30.00 / LF	\$3,300.00
Storm Sewer, 24"		LF	\$35.00 / LF	
Storm Sewer, 36"		LF	\$40.00 / LF	
Street Signs		EA	\$100.00 / EA	
Street Trees	10	EA	\$150.00 / EA	\$1,500.00

**Subtotal:** \$98,202.00

**Additional 20%:** \$19,640.40

**Design:** \$9,427.39

**Total Estimate:** \$127,269.79



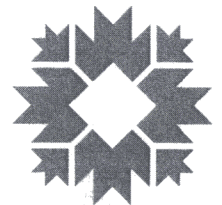


Roosevelt Street  
 (4th Street to 5th Street)

By: wykoffj  
 11 Jan 05



City of Bloomington  
 Engineering



Scale: 1" = 100'

For reference only; map information NOT warranted.

## Engineer's Estimate

Maxwell Lane Sidewalk (Highland Avenue to Jordan Avenue) - North Side

Item	Quantity	Unit	Unit Price	Total Price
Mobilization and Demobilization	1	EA	\$3,000.00 / EA	\$3,000.00
B Borrow for Structural Backfill	20	CYS	\$45.00 / CYS	\$900.00
Bituminous Base		Ton	\$30.00 / Ton	
Bituminous Material for Tack		Ton	\$105.00 / Ton	
Bituminous Overlay (2" x 12')		LF	\$5.42 / LF	
Bituminous Surface	60	Ton	\$47.00 / Ton	\$2,820.00
Bituminous Base		Ton	\$44.00 / Ton	
Bituminous Surface Milling		SYS	\$2.00 / SYS	
Brick Sidewalk Ramp (ADA Compliant)	3	EA	\$500.00 / EA	\$1,500.00
Casting, Adjust to Grade		EA	\$500.00 / EA	
Casting, Storm Inlet/Manhole	5	EA	\$1,800.00 / EA	\$9,000.00
Cement Concrete Pavement 7"	1220	SF	\$4.50 / SF	\$5,490.00
Comp. Agg. No. 53	120	Ton	\$10.00 / Ton	\$1,200.00
Compacted Agg. for Base		Ton	\$16.80 / Ton	
Compacted Agg. for Shoulder		Ton	\$13.25 / Ton	
Concrete Curb and Gutter	370	LF	\$18.00 / LF	\$6,660.00
Concrete Curb, Type B		LF	\$15.00 / LF	
Construction Sign, Type A	4	EA	\$50.00 / EA	\$200.00
Excavation, Common	240	CYS	\$18.00 / CYS	\$4,320.00
Geotextile		SYS	\$3.50 / SYS	
Tree/Vegetation Removal		EA	\$500.00 / EA	
Perforated Pipe, Plastic 6"		LF	\$3.00 / LF	
Reinforcing Steel - Epoxy		CYS	\$0.60 / CYS	
Right of Way		SF	\$2.50 / SF	
Topsoil	80	Ton	\$10.00 / Ton	\$800.00
Sod	275	SYS	\$4.50 / SYS	\$1,237.50
Roll Curb		LF	\$12.00 / LF	
Sidewalk, 4'		LF	\$15.00 / LF	
Sidewalk, 5'	353	LF	\$22.00 / LF	\$7,766.00
Stop Signs		EA	\$150.00 / EA	
Storm Sewer, 12"		LF	\$25.00 / LF	
Storm Sewer, 18"	250	LF	\$30.00 / LF	\$7,500.00
Storm Sewer, 24"		LF	\$35.00 / LF	
Storm Sewer, 36"		LF	\$40.00 / LF	
Street Signs*	4	EA	\$100.00 / EA	\$400.00
P - Cabinet*		EA	\$12,000.00 / EA	
30 Foot Strain Pole*		EA	\$4,600.00 / EA	
Camera Arm*		EA	\$1,500.00 / EA	
Signal Head (3 Section L.E.D.)*		EA	\$1,150.00 / EA	
Signal Head (5 Section L.E.D.)*		EA	\$1,914.00 / EA	
Pedestrian Signal L.E.D. Countdown*		EA	\$800.00 / EA	
Solo Pro Camera w/Junction Boxes*		EA	\$10,000.00 / EA	
Pedestrian Button Actuator*		EA	\$250.00 / EA	
Signal Service Connection*		EA	\$2,500.00 / EA	
Pavement Marking - 6" White*		LF	\$0.42 / LF	
Pavement Marking - Double Yellow*		LF	\$0.70 / LF	
Pavement Marking - Stop Bars*		LF	\$2.50 / LF	
Pavement Marking - Arrow Straight*		EA	\$175.00 / EA	
Pavement Marking - Arrow Turn*		EA	\$175.00 / EA	
Pavement Marking - Combination Arrow*		EA	\$200.00 / EA	
Street Trees (2-1/2" Caliper)	9	EA	\$275.00 / EA	\$2,475.00

<b>Subtotal:</b>	\$55,268.50
<b>Additional 10%:</b>	\$5,526.85
<b>Design:</b>	\$4,863.63
<b>Total Estimate:</b>	\$65,658.98

\*Direct Traffic Signal Installation Costs



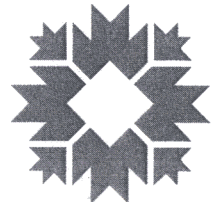
By: wykoffj  
14 Nov 05



For reference only; map information NOT warranted.



City of Bloomington  
Engineering



Scale: 1" = 100'

## Engineer's Estimate

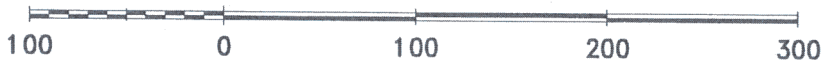
Maxwell Lane Sidewalk (Jordan Avenue to Sheridan Drive) - North Side

Item	Quantity	Unit	Unit Price	Total Price
Mobilization and Demobilization	1	EA	\$3,000.00 / EA	\$3,000.00
B Borrow for Structural Backfill	24	CYS	\$45.00 / CYS	\$1,080.00
Bituminous Base		Ton	\$30.00 / Ton	
Bituminous Material for Tack		Ton	\$105.00 / Ton	
Bituminous Overlay (2" x 12')		LF	\$5.42 / LF	
Bituminous Surface	85	Ton	\$47.00 / Ton	\$3,995.00
Bituminous Base		Ton	\$44.00 / Ton	
Bituminous Surface Milling		SYS	\$2.00 / SYS	
Brick Sidewalk Ramp (ADA Compliant)	2	EA	\$500.00 / EA	\$1,000.00
Casting, Adjust to Grade		EA	\$500.00 / EA	
Casting, Storm Inlet/Manhole	5	EA	\$1,800.00 / EA	\$9,000.00
Cement Concrete Pavement 7"	620	SF	\$4.50 / SF	\$2,790.00
Comp. Agg. No. 53	130	Ton	\$10.00 / Ton	\$1,300.00
Compacted Agg. for Base		Ton	\$16.80 / Ton	
Compacted Agg. for Shoulder		Ton	\$13.25 / Ton	
Concrete Curb and Gutter	520	LF	\$18.00 / LF	\$9,360.00
Concrete Curb, Type B		LF	\$15.00 / LF	
Construction Sign, Type A	4	EA	\$50.00 / EA	\$200.00
Excavation, Common	320	CYS	\$18.00 / CYS	\$5,760.00
Geotextile		SYS	\$3.50 / SYS	
Tree/Vegetation Removal		EA	\$500.00 / EA	
Perforated Pipe, Plastic 6"		LF	\$3.00 / LF	
Reinforcing Steel - Epoxy		CYS	\$0.60 / CYS	
Right of Way		SF	\$2.50 / SF	
Topsoil	100	Ton	\$10.00 / Ton	\$1,000.00
Sod	360	SYS	\$4.50 / SYS	\$1,620.00
Roll Curb		LF	\$12.00 / LF	
Sidewalk, 4'		LF	\$15.00 / LF	
Sidewalk, 5'	465	LF	\$22.00 / LF	\$10,230.00
Stop Signs		EA	\$150.00 / EA	
Storm Sewer, 12"		LF	\$25.00 / LF	
Storm Sewer, 18"	260	LF	\$30.00 / LF	\$7,800.00
Storm Sewer, 24"		LF	\$35.00 / LF	
Storm Sewer, 36"		LF	\$40.00 / LF	
Street Signs*	4	EA	\$100.00 / EA	\$400.00
P - Cabinet*		EA	\$12,000.00 / EA	
30 Foot Strain Pole*		EA	\$4,600.00 / EA	
Camera Arm*		EA	\$1,500.00 / EA	
Signal Head (3 Section L.E.D.)*		EA	\$1,150.00 / EA	
Signal Head (5 Section L.E.D.)*		EA	\$1,914.00 / EA	
Pedestrian Signal L.E.D. Countdown*		EA	\$800.00 / EA	
Solo Pro Camera w/Junction Boxes*		EA	\$10,000.00 / EA	
Pedestrian Button Actuator*		EA	\$250.00 / EA	
Signal Service Connection*		EA	\$2,500.00 / EA	
Pavement Marking - 6" White*		LF	\$0.42 / LF	
Pavement Marking - Double Yellow*		LF	\$0.70 / LF	
Pavement Marking - Stop Bars*		LF	\$2.50 / LF	
Pavement Marking - Arrow Straight*		EA	\$175.00 / EA	
Pavement Marking - Arrow Turn*		EA	\$175.00 / EA	
Pavement Marking - Combination Arrow*		EA	\$200.00 / EA	
Street Trees (2-1/2" Caliper)	9	EA	\$275.00 / EA	\$2,475.00
			<b>Subtotal:</b>	\$61,010.00
			<b>Additional 10%:</b>	\$6,101.00
			<b>Design:</b>	\$5,368.88
			<b>Total Estimate:</b>	\$72,479.88

\*Direct Traffic Signal Installation Costs



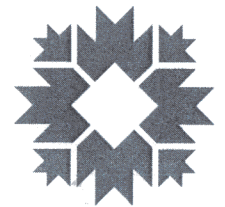
By: wykoffj  
14 Nov 05



For reference only; map information NOT warranted.



City of Bloomington  
Engineering



Scale: 1" = 100'

## Engineer's Estimate

Arden Drive (High Street to Windsor Drive) - South Side

Item	Quantity	Unit	Unit Price	Total Price
Mobilization and Demobilization	1	EA	\$3,000.00 / EA	\$3,000.00
B Borrow for Structural Backfill	24	CYS	\$45.00 / CYS	\$1,080.00
Bituminous Base		Ton	\$30.00 / Ton	
Bituminous Material for Tack		Ton	\$105.00 / Ton	
Bituminous Overlay (2" x 12')		LF	\$5.42 / LF	
Bituminous Surface	20	Ton	\$47.00 / Ton	\$940.00
Bituminous Base		Ton	\$44.00 / Ton	
Bituminous Surface Milling		SYS	\$2.00 / SYS	
Brick Sidewalk Ramp (ADA Compliant)	3	EA	\$500.00 / EA	\$1,500.00
Casting, Adjust to Grade		EA	\$500.00 / EA	
Casting, Storm Inlet/Manhole	6	EA	\$1,800.00 / EA	\$10,800.00
Cement Concrete Pavement 7"	450	SF	\$4.50 / SF	\$2,025.00
Comp. Agg. No. 53		Ton	\$10.00 / Ton	
Compacted Agg. for Base		Ton	\$16.80 / Ton	
Compacted Agg. for Shoulder		Ton	\$13.25 / Ton	
Concrete Curb and Gutter	340	LF	\$18.00 / LF	\$6,120.00
Concrete Curb, Type B		LF	\$15.00 / LF	
Construction Sign, Type A		EA	\$50.00 / EA	
Excavation, Common	250	CYS	\$18.00 / CYS	\$4,500.00
Geotextile		SYS	\$3.50 / SYS	
Tree/Vegetation Removal		EA	\$500.00 / EA	
Perforated Pipe, Plastic 6"		LF	\$3.00 / LF	
Reinforcing Steel - Epoxy		CYS	\$0.60 / CYS	
Right of Way		SF	\$2.50 / SF	
Topsoil		Ton	\$10.00 / Ton	
Sod		SYS	\$4.50 / SYS	
Roll Curb		LF	\$12.00 / LF	
Sidewalk, 4'		LF	\$15.00 / LF	
Sidewalk, 5'	314	LF	\$22.00 / LF	\$6,908.00
Stop Signs		EA	\$150.00 / EA	
Storm Sewer, 12"		LF	\$25.00 / LF	
Storm Sewer, 18"		LF	\$30.00 / LF	
Storm Sewer, 24"	330	LF	\$35.00 / LF	\$11,550.00
Storm Sewer, 36"		LF	\$40.00 / LF	
Street Signs*		EA	\$100.00 / EA	
P - Cabinet*		EA	\$12,000.00 / EA	
30 Foot Strain Pole*		EA	\$4,600.00 / EA	
Camera Arm*		EA	\$1,500.00 / EA	
Signal Head (3 Section L.E.D.)*		EA	\$1,150.00 / EA	
Signal Head (5 Section L.E.D.)*		EA	\$1,914.00 / EA	
Pedestrian Signal L.E.D. Countdown*		EA	\$800.00 / EA	
Solo Pro Camera w/Junction Boxes*		EA	\$10,000.00 / EA	
Pedestrian Button Actuator*		EA	\$250.00 / EA	
Signal Service Connection*		EA	\$2,500.00 / EA	
Pavement Marking - 6" White*		LF	\$0.42 / LF	
Pavement Marking - Double Yellow*		LF	\$0.70 / LF	
Pavement Marking - Stop Bars*		LF	\$2.50 / LF	
Pavement Marking - Arrow Straight*		EA	\$175.00 / EA	
Pavement Marking - Arrow Turn*		EA	\$175.00 / EA	
Pavement Marking - Combination Arrow*		EA	\$200.00 / EA	
Street Trees (2-1/2" Caliper)	6	EA	\$275.00 / EA	\$1,650.00

<b>Subtotal:</b>	\$50,073.00
<b>Additional 10%:</b>	\$5,007.30
<b>Design:</b>	\$4,406.42
<b>Total Estimate:</b>	\$59,486.72

\*Direct Traffic Signal Installation Costs



## Engineer's Estimate

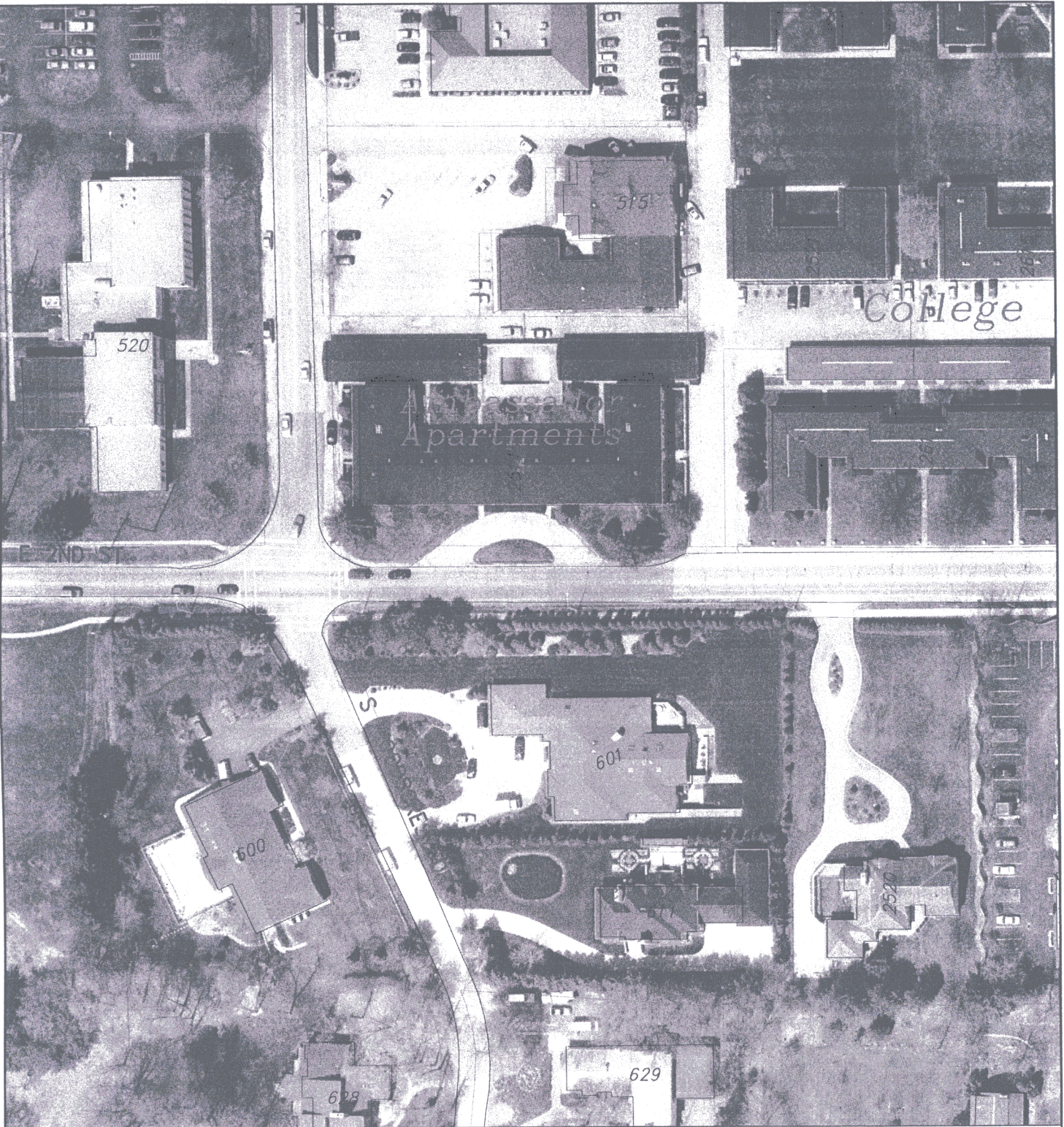
2nd Street Sidewalk - Woodcrest to 300 feet East (North Side)

Item	Quantity	Unit	Unit Price	Total Price
Mobilization and Demobilization	1	EA	\$3,000.00 / EA	\$3,000.00
B Borrow for Structural Backfill		CYS	\$26.00 / CYS	
Bituminous Base		Ton	\$30.00 / Ton	
Bituminous Material for Tack		Ton	\$105.00 / Ton	
Bituminous Overlay (2" x 12')		LF	\$5.42 / LF	
Bituminous Surface	20	Ton	\$47.00 / Ton	\$940.00
Bituminous Base		Ton	\$44.00 / Ton	
Bituminous Surface Milling		SYS	\$2.00 / SYS	
Casting, Adjust to Grade		EA	\$500.00 / EA	
Casting, Storm Inlet/Manhole		EA	\$1,800.00 / EA	
Cement Concrete Pavement 7"	1800	SF	\$4.50 / SF	\$8,100.00
Comp. Agg. No. 53	60	Ton	\$10.00 / Ton	\$600.00
Compacted Agg. for Base		Ton	\$16.80 / Ton	
Compacted Agg. for Shoulder		Ton	\$13.25 / Ton	
Concrete Curb and Gutter		LF	\$18.00 / LF	
Concrete Curb, Type B		LF	\$15.00 / LF	
Construction Sign, Type A		EA	\$50.00 / EA	
Excavation, Common		CYS	\$18.00 / CYS	
Geotextile		SYS	\$3.50 / SYS	
Tree/Vegetation Removal		EA	\$500.00 / EA	
Perforated Pipe, Plastic 6"		LF	\$3.00 / LF	
Reinforcing Steel - Epoxy		CYS	\$0.60 / CYS	
Right of Way		SF	\$2.50 / SF	
Topsoil	40	Ton	\$10.00 / Ton	\$400.00
Sod	200	SYS	\$4.50 / SYS	\$900.00
Roll Curb	300	LF	\$12.00 / LF	\$3,600.00
Sidewalk Ramp	6	EA	\$300.00 / EA	\$1,800.00
Brick Sidewalk Ramps	1	EA	\$550.00 / EA	\$550.00
Sidewalk, 5'	304	LF	\$22.00 / LF	\$6,688.00
Stop Signs		EA	\$150.00 / EA	
Storm Sewer, 12"		LF	\$25.00 / LF	
Storm Sewer, 18"		LF	\$30.00 / LF	
Storm Sewer, 24"		LF	\$35.00 / LF	
Storm Sewer, 36"		LF	\$40.00 / LF	
Street Signs*		EA	\$100.00 / EA	
P - Cabinet*		EA	\$12,000.00 / EA	
30 Foot Strain Pole*		EA	\$4,600.00 / EA	
Camera Arm*		EA	\$1,500.00 / EA	
Signal Head (3 Section L.E.D.)*		EA	\$1,150.00 / EA	
Signal Head (5 Section L.E.D.)*		EA	\$1,914.00 / EA	
Pedestrian Signal L.E.D. Countdown*		EA	\$800.00 / EA	
Solo Pro Camera w/Junction Boxes*		EA	\$10,000.00 / EA	
Pedestrian Button Actuator*		EA	\$250.00 / EA	
Signal Service Connection*		EA	\$2,500.00 / EA	
Pavement Marking - 6" White*		LF	\$0.42 / LF	
Pavement Marking - Double Yellow*		LF	\$0.70 / LF	
Pavement Marking - Stop Bars*		LF	\$2.50 / LF	
Pavement Marking - Arrow Straight*		EA	\$175.00 / EA	
Pavement Marking - Arrow Turn*		EA	\$175.00 / EA	
Pavement Marking - Combination Arrow*		EA	\$200.00 / EA	
Street Trees (2-1/2" Caliper)		EA	\$275.00 / EA	

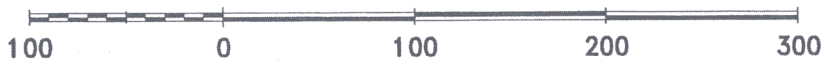
Subtotal:	\$26,578.00
Additional 10%:	\$2,657.80
Design:	\$2,338.86
<b>Total Estimate:</b>	<b>\$31,574.66</b>

\*Direct Traffic Signal Installation Costs

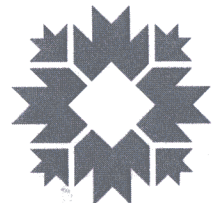




By: wykoffj  
7 Nov 05



City of Bloomington  
Engineering



Scale: 1" = 100'

For reference only; map information NOT warranted.

## Engineer's Estimate

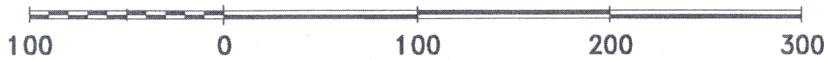
11th Street Sidewalk (Washington Street to Lincoln Street) - North Side

Item	Quantity	Unit	Unit Price	Total Price
Mobilization and Demobilization	1	EA	\$3,000.00 / EA	\$3,000.00
B Borrow for Structural Backfill	20	CYS	\$45.00 / CYS	\$900.00
Bituminous Base		Ton	\$30.00 / Ton	
Bituminous Material for Tack		Ton	\$105.00 / Ton	
Bituminous Overlay (2" x 12')		LF	\$5.42 / LF	
Bituminous Surface	40	Ton	\$47.00 / Ton	\$1,880.00
Bituminous Base		Ton	\$44.00 / Ton	
Bituminous Surface Milling		SYS	\$2.00 / SYS	
Brick Sidewalk Ramp (ADA Compliant)	5	EA	\$500.00 / EA	\$2,500.00
Casting, Adjust to Grade		EA	\$500.00 / EA	
Casting, Storm Inlet/Manhole	5	EA	\$1,800.00 / EA	\$9,000.00
Cement Concrete Pavement 7"	450	SF	\$4.50 / SF	\$2,025.00
Comp. Agg. No. 53	100	Ton	\$10.00 / Ton	\$1,000.00
Compacted Agg. for Base		Ton	\$16.80 / Ton	
Compacted Agg. for Shoulder		Ton	\$13.25 / Ton	
Concrete Curb and Gutter	370	LF	\$18.00 / LF	\$6,660.00
Concrete Curb, Type B		LF	\$15.00 / LF	
Construction Sign, Type A	2	EA	\$50.00 / EA	\$100.00
Excavation, Common	160	CYS	\$18.00 / CYS	\$2,880.00
Geotextile		SYS	\$3.50 / SYS	
Tree/Vegetation Removal		EA	\$500.00 / EA	
Perforated Pipe, Plastic 6"		LF	\$3.00 / LF	
Reinforcing Steel - Epoxy		CYS	\$0.60 / CYS	
Right of Way		SF	\$2.50 / SF	
Topsoil	100	Ton	\$10.00 / Ton	\$1,000.00
Sod	275	SYS	\$4.50 / SYS	\$1,237.50
Roll Curb		LF	\$12.00 / LF	
Sidewalk, 4'		LF	\$15.00 / LF	
Sidewalk, 5'	350	LF	\$22.00 / LF	\$7,700.00
Stop Signs		EA	\$150.00 / EA	
Storm Sewer, 12"	370	LF	\$25.00 / LF	\$9,250.00
Storm Sewer, 18"		LF	\$30.00 / LF	
Storm Sewer, 24"		LF	\$35.00 / LF	
Storm Sewer, 36"		LF	\$40.00 / LF	
Street Signs*	4	EA	\$100.00 / EA	\$400.00
P - Cabinet*		EA	\$12,000.00 / EA	
30 Foot Strain Pole*		EA	\$4,600.00 / EA	
Camera Arm*		EA	\$1,500.00 / EA	
Signal Head (3 Section L.E.D.)*		EA	\$1,150.00 / EA	
Signal Head (5 Section L.E.D.)*		EA	\$1,914.00 / EA	
Pedestrian Signal L.E.D. Countdown*		EA	\$800.00 / EA	
Solo Pro Camera w/Junction Boxes*		EA	\$10,000.00 / EA	
Pedestrian Button Actuator*		EA	\$250.00 / EA	
Signal Service Connection*		EA	\$2,500.00 / EA	
Pavement Marking - 6" White*		LF	\$0.42 / LF	
Pavement Marking - Double Yellow*		LF	\$0.70 / LF	
Pavement Marking - Stop Bars*		LF	\$2.50 / LF	
Pavement Marking - Arrow Straight*		EA	\$175.00 / EA	
Pavement Marking - Arrow Turn*		EA	\$175.00 / EA	
Pavement Marking - Combination Arrow*		EA	\$200.00 / EA	
Street Trees (2-1/2" Caliper)	4	EA	\$275.00 / EA	\$1,100.00
			<b>Subtotal:</b>	\$50,632.50
			<b>Additional 10%:</b>	\$5,063.25
			<b>Design:</b>	\$4,455.66
			<b>Total Estimate:</b>	\$60,151.41

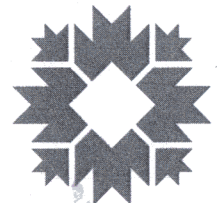
\*Direct Traffic Signal Installation Costs



By: wykoffj  
7 Nov 05



City of Bloomington  
Engineering



Scale: 1" = 100'

For reference only; map information NOT warranted.

**Council Sidewalk Committee  
Recommendations for Use of Alternative Transportation Funds for 2006**

**Shaded Rows – Indicate Projects Recommended for funding.**

Street	Side	From/To	Phase	Preparation of Estimates	Notes	Other Funding Source	Sponsor	Recommended Funding 2006
<b>Continuation of Previously Funded Projects</b>								
<b>Queens Way</b>	South	Sussex to High Street	Construction	\$25,969.68	<p><b>Need:</b> The Council committed to provide sidewalks on Queens Way at the time the Renwick PUD was approved in order to offer a safe pedestrian route on what will become a through street.</p> <p><b>Other:</b></p> <p>►: Recommend funding for this last leg of sidewalk between the Renwick development and High Street.</p>	None	Rollo	\$25,969.68
<b>Marilyn Drive</b>	South	Nancy Street to High Street	Construction	<p>w/ piping along street - \$165,424.25</p> <p>w/ piping north - \$119,000</p>	<p><b>Need:</b> This project is on the Greenways Plan and is one phase of a sidewalk that would connect Southdown to High Street via Circle, Ruby, Nancy and Marilyn.</p> <p><b>Other:</b> There are two alternatives for the routing of stormwater that affect the cost of this project. The cost for the route along Marilyn is uncertain because of the risk of hitting rock. Justin has sought borings, but estimates that with 8' trench down Marilyn it would cost an additional \$12,500 if crew hit rock at 3'. The stormwater costs should be explored further with the Utilities department.</p> <p>►: Design costs have already been funded, but the cost of construction will not be known until a route for the stormwater is chosen. The Committee recommends revisiting construction next year.</p>	Storm Water	Rollo	
<b>Roosevelt</b>	West	4 <sup>th</sup> to 5 <sup>th</sup> Street	Construction	\$86,340.82	<p><b>Need:</b> This project ties in with the recent improvements made by the private sector (Doug McCoy), which make this a through-street.</p>	?	Mayer	\$127,269.79
	East	4 <sup>th</sup> to 5 <sup>th</sup> Street	Construction	<p>\$127,269.79 w/curbs</p> <p>\$86,340.82 w/o curbs</p>	<p><b>Other:</b> The two single-family houses at 105 &amp; 109 South Roosevelt were not required to install sidewalks at the time they were permitted. At that time, Planning did not require sidewalk installations for single-family homes on infill projects.</p> <p>►: Recommend funding a sidewalk on the east side of the street with curbs on the west side.</p>			
<b>SUB-TOTAL</b>				<p>High: \$318,664</p> <p>Low: \$231,311</p>				

Extension of Previously Funded Project								
<b>Jefferson</b>	East	3 <sup>rd</sup> to 4 <sup>th</sup> Street	Design and Construction	\$136,243.20 w/ curbs \$73,252.08 w/o curbs	<p><b>Need:</b> Greenacres is a largely rental area without sidewalks. In 2002 and 2003 the Committee funded sidewalk and stormwater design projects for Jefferson from 3<sup>rd</sup> to 10<sup>th</sup> and 5<sup>th</sup> from Union to Overhill.</p> <p><b>Other:</b> Committee inquired whether DPW would be able to assist with this project? It appears that Jane Fleig is working on the big stormwater issues on 4<sup>th</sup>.</p> <p>►: Committee will consider this project in future years when money for the large stormwater costs is available.</p>	?	Mayer	
<b>Jefferson</b>	East	4 <sup>th</sup> to 5 <sup>th</sup> Street	Design and Construction	\$142,747.20 w/curbs \$69,796.19 w/o curbs		?	Mayer	
<b>Maxwell Lane</b>	North	Highland to Jordan	Design and Construction	\$65,658.98 – w/ tree plot and piping	<p><b>Need:</b> Maxwell Lane is an arterial used by many pedestrians. The Committee has already installed sidewalks between Henderson and Woodlawn and Sheridan to the Clifton sidepath. This would be the last link between Henderson and High Street.</p> <p><b>Other:</b> The City could construct the sidewalk at the edge of the roadway, but that would increase costs due to the piping of the stormwater that now flows in a ditch.</p> <p>►: Committee recommended funding design of this two-block project.</p>		Rollo	\$10,000 for design of this two block project.
<b>Maxwell Lane</b>	North	Jordan to Sheridan	Design and Construction	\$72,479.88 – w/ tree plot and piping				
<b>Nancy Street</b>	West/	Mark Street to Hillside Drive	Design and Construction	\$142,282.01	<p><b>Need:</b> This project was proposed by the neighbors. It would connect the sidewalks on Hillside to the Greenways project further north on Nancy and provide a place for students in the apartments south of Hillside and other neighbors to walk to and from campus and other destinations to the north.</p> <p><b>Other:</b> The previously funded sidewalk on Nancy was extended from Marilyn to Mark Street.</p> <p>►: The previous extension will alleviate conditions for many pedestrians who can choose Mark and Longwood rather than Nancy Street. Further extension to Hillside rates lower than other projects being considered this round.</p>		Rollo	
<b>South Walnut</b>	West	Hoosier Street to Legends Parking Lot	Design and Construction	\$65,967.26	<p><b>Need:</b> The Committee recognized the need for a sidewalk along the west side of Walnut south of Tapp Road and worked with DPW to install one from Pinewood north.</p> <p><b>Other:</b></p> <p>►: The Committee should await developments at the Winston/Thomas Plant, see whether DPW will be able to assist with the project, and get a better sense of the potential usage of this pedestrian way.</p>	?	Julio Alonso	
<b>South Walnut</b>	West	Winston-Thomas (CBU) to Nat'l Guard Armory	Design and Construction	\$93,056.04		?	Julio Alonso	
SUB-TOTAL				High: \$718,435 Low: \$582,492				
Previously Discussed But Unfunded Projects								
<b>South Rogers</b>	West	Rockport Road to Country Club Drive	Design and Construction	No Estimate - Scope of Project	<p><b>Need:</b> South Rogers is a busy and fast flowing arterial that serves many neighborhoods.</p> <p><b>Other:</b> Future improvements at the intersection of South Rogers and Country Club Road will include 500' of sidewalk. Stormwater needs to go east and could provide sidepath.</p> <p>►: CDBG funds will be used to design and acquire ROW for this project. There is no need to commit ATF monies at this time.</p>	CDBG – design CBU?	Sturbaum	

Reconsideration of Previously Denied Projects								
<b>North Kinser Pike</b>	West	Acuff to End of Residences	Design and Construction	\$338,908.48 w/ half for ROW (Fall 2004)	<p><b>Need:</b> This project was requested last year by Todd Thompson and, after denial, was requested for reconsideration this year.</p> <p><b>Other:</b> Mr. Todd Thompson attended and participated in the discussion on November 14<sup>th</sup>. The Committee inquired whether property owners would dedicate ROW. Staff reminded him of the criteria, list of competing projects, and amount of available funds. It appears the neighbors may be working with the property owner behind them to use an area for a walkway.</p> <p>►: The Committee decided not to recommend funding, but would reconsider if all the property owners agreed to dedicate the ROW.</p>		Thompson (Resident)	
<b>Henderson Street</b>	West	Maxwell Lane to Hillside Drive	Design and Construction	\$51,452.28 – Dodds to Maxwell \$47,692.26 – Dixie to Dodds \$36,409.82 – Allen to Dixie \$46,564.85 – Creek to Allen \$46,564.85 – Creek to Davis \$49,664.34 – Davis to Grimes	<p><b>Need:</b> Jan Sorby of the Bryan Park Neighborhood Association submitted this request last year and requested reconsideration after it had been denied.</p> <p><b>Other:</b> There were questions about whether the sidewalk would hinder parking at Bender Apartments and whether parallel parking would adequately serve the tenants. Since the total cost of the project approached \$500,000, the City should explore installing appropriate crosswalks, which some thought shouldn't be placed at Brenda. There were no estimates for the segment south of Grimes Lane and also questions about the improvements to be made by the South Dunn PUD and how that might affect future pedestrian usage.</p> <p>►: Project is expensive and redundant (given sidewalk on east side of the street). City should encourage crosswalks that align with improvements in the Park and with some of the improvements to be made by the developer of the South Dunn project.</p>		Sabbagh (Jan Sorby)	
SUB-TOTAL				\$617,257				
New Projects								
<b>Arden Drive</b>	South	Wilton Drive to High Street	Design and Construction	\$59,486.72 -- High to Windsor \$118,771.49 – Wilton to <u>Windsor</u> \$178,258.21	<p><b>Need:</b> The neighbors met with Councilmember Rollo and wanted a sidewalk to help their kids get to High Street and Southeast Park.</p> <p><b>Other:</b> The Committee discussed which side of the street was appropriate. Justin didn't have a preference for side of street and anticipated piping stormwater. Given the new trail going up the east side of High Street and the nature of the intersection, the south side was preferred.</p> <p>►: Recommend funds for design.</p>		Rollo (Arden Place NA)	\$5,000 Design
<b>East 2<sup>nd</sup></b>	North	Woodcrest East for the length of one parcel	Design and Construction	\$31,574.66	<p><b>Need:</b> This is the sole segment of missing sidewalk on the north and south side of East 2<sup>nd</sup> between College Mall Road and High Street.</p> <p><b>Other:</b> Committee preferred efforts to save large pine tree by routing sidewalk closer to the building. Justin plans for 6' wide sidewalk.</p> <p>►: Recommend funding for design. Urge DPW to provide the labor.</p>		Mayer	\$5,000 Design
<b>East 11<sup>th</sup></b>	North	Washington to Lincoln	Design and Construction	\$60,151.41 w/curb on one side, but not the other	<p><b>Need:</b> Councilmember Volan identified this as block in the urban core without a sidewalk.</p> <p><b>Other:</b> Justin had no preference for side of street which meant issues of parking and vegetation were similar on both sides.</p> <p>►: Recommend funding design.</p>		Volan	\$10,000 Design

<b>East 17<sup>th</sup></b>	South	Dunn Street to Fee Lane	Design and Construction	\$60,406.83 – Indiana to Fess \$64,445.44 – Woodlawn to Forrest <u>\$140,464.37</u> – Fess to <u>Woodlawn</u> <b>\$265,316.64</b>	<b>Need:</b> Carolyn McClary requested this project after her experience walking to and from basketball games <b>Other:</b> Justin indicated that Hazard Elimination and Safety (HES) funds will be used to redo the intersection of 17 <sup>th</sup> and Fee Lane. City will work with IU on the acquisition of ROW. City will also put in a sidepath on the north side of the street up to St. Paul’s Church. <b>►:</b> The Committee thought there were a number of unknown factors – the sidepath, HES improvements, IU contributions – to recommend any improvements at this time. Better crosswalks may be the best alternative.		Carolyn McClary	
SUB-TOTAL				\$535,301				
GRAND TOTAL				High: \$2,189,656 Low: \$1,966,361				
<b>Projects Funded Through Other Sources</b>								
<b>North Maple</b>	Split	15 <sup>th</sup> to 17 <sup>th</sup> Street		Done - 2004	N/A	HAND and DPW	Sturbaum	N/A
<b>Wylie and Dixie</b>	?	West of Fairview	Rehab WPA Sidewalks	N/A	N/A	HAND, BUEA, and DPW	Jack Baker (McDoel NA)	N/A

**COUNCIL SIDEWALK COMMITTEE PROJECTS**

**2006**

<b>Type of Project/Site</b>	<b>Estimated</b>	<b>Recommendation</b>	<b>Actual</b>	<b>Date Completed</b>	<b>Comments</b>
Queens Way, Sussex to High (south side)	\$25,969.68	\$25,969.68			It is the missing link, connecting High to Renwick.
Roosevelt, Fourth to Fifth (east side)	\$127, 269.79 with curbs	\$127,269.79			This ties in with the recent improvements made by Doug McCoy which made Roosevelt a through-street.
Arden – From High to Windsor (south side)	\$59,486.72	\$5,000 (design only)			This project provides a safe walk way for the neighborhood's many children to travel to a near-by school & park.
E. 2nd -- Woodcrest to 300' east (north side)	\$31,574.66	\$5,000 (design only)			This project is the missing link on the north side of the street from College Mall to the west. Justin suggested that in future years, the Committee might provide material and ask CBU to install.
11th Street– Washington to Lincoln (north side)	\$60,151.41	\$10,000 (design only)			
Maxwell -- Highland to Jordan (north side)	\$65,658.98 with tree plot & piping	\$5,000 (design only)			This 2-block project completes the missing link on Maxwell between Henderson & High.
Maxwell -- Jordan to Sheridan (north side)	\$72,479.88 with tree plot & piping	\$5,000 (design only)			This 2-block project completes the missing link on Maxwell between Henderson & High.
<b>Total:</b>		<b>\$183,239.47</b>			



2005					
Type of Project/Site	Estimated	Recommendation	Actual	Date Complete	Comments
Sidewalk Project - Maxwell Lane from Clifton Sidepath to High Street (north side)	\$65,175.00	\$65,175.00			Since 1999, the Committee has funded sidewalks on Maxwell Lane between Henderson and High Street. The first project was north of Bryan Park and ran from Henderson Street to Manor Road and connected to an existing sidewalk that runs to Jordan Avenue. The second project connected a sidewalk on Sheridan with the Clifton sidepath. This project would connect the latter sidewalk to High Street. The Committee recommended that a cross walk be placed on High Street (to connect with an existing sidewalk) and that sidewalk be placed to preserve trees, if that isn't possible, include a tree plot.
Sidewalk Project - Queens Way from Chelsea to Sussex (south side)	\$35,729.00	\$35,729.00			The Renwick developer will install a sidewalk on the south side of Queens Way from the new development to Monclair Avenue. The Committee received estimates for installing sidewalks the rest of the way to High Street (\$83,700), funded the first leg between Montclair and Sussex in 2004.
Sidewalk Design - Marilyn from Nancy Street to High Street (south side)	\$155,216 (one block only)	\$11,497.54 (design only)			This project begins completion of the western end of what's known as the Southeast Neighborhood Initiative. This initiative will eventually connect the walking/biking lane on Southdowns / Jordan with sidewalks at Covenanter / High Street. The City has already completed a sidewalk from Mitchell / Southdowns to Ruby / Nancy Street, and Nancy Street from Ruby to Marilyn Drive. This allocation funds design costs and gives staff an opportunity to determine whether there are storm water costs that might be borne by CBU. One more leg on Southdowns from Jordan to Mitchell would complete this initiative.
Sidewalk Design - Roosevelt from 4th to 5th Street (east side)	\$86,340.00	\$6,395.62 (design only)			This is a new project that would complement new private development on Roosevelt that will make it a through-street and include a sidepath on 4 <sup>th</sup> Street. The estimate for the project is \$86,340 and this recommendation funds the design costs.
<b>Total:</b>	<b>\$187,244.00</b>				

2004					
Type of Project/Site	Estimated	Recommendation	Actual	Date Completed	Comments
Sidewalk Project - 10th Street for 350 feet West of Grandview (south side)		\$45,000.00			The Council funded this proejct in 2003 and approximately \$6,344 was spent that year on designing the sidewalk and acquiring right-of-way, but the remaining funds were not encumbered for its construction. The Committee recommends using unspent and unencumbered funds from previous years to fund this project.
Sidewalk Project - Nancy Street from Ruby Lane to Marilyn Drive (west side)	\$45,628.00	\$45,628.00			The Committee recommended funding this segment of the larger South East Neighborhood Initiative. That initiative first received funding in 2002 (see below).
Sidewalk Project - Jefferson Street between 7th and 8th (east side)	\$114,000.00	\$114,000.00			The Committee recommended funding this first segment of the larger Jefferson Street project, which has been designed as a result of previous funding in 2002 (see below). This segment, unlike the others, does not require a large complement of storm water funds.
Sidewalk Project - Winfield Road from Fair Oaks Lane to Existing Sidewalk just south of Rechter Road (east side)	\$45,096.00	\$27, 000 (+\$18,096 from Wininger/Stolberg)			The Committee recommended funding this project in concert with the developer of the Renwick PUD (Wininger / Stolberg) who has offered to pay for the cost of materials (approximately \$18,096).
Sidewalk Project - Queens Way from Montclair Avenue to Chelsea Court (south side)	\$22,139.00	\$22,139.00			The Committee recommended funding this and the previous project in order to have sidewalks in place before the Renwick PUD gets well under way.
<b>Total:</b>		\$253,767.00			This amount includes \$151,000 of funds appropriated for sidewalks this year and unspent monies from previous years. If there are not enough monies in the Alternative Transportation Fund in 2004, then the Committee will need to decide whether to recommend use of 2005 funds for these purposes.

2003					
Type of Project/Site	Estimated	Recommendation	Actual	Date Complete	Comments
Sidewalk Project - East 5th Street from 1 block east of Overhill (deadend) to Overhill.	\$255,596.00	\$52,597.00			On 6/18/03, the Council approved the Committee recommendation to allocate \$52,597 contingent upon the availability of storm water funds.
Sidewalk Project - 10th Street for 350 feet west of Grandview Drive (south side)	\$43,975.00	\$43,975.00			
Sidewalk Project - Walnut Street from Bank One (Country Club/Winslow) to Hoosier Street (west side)	\$104,354.00	\$63,427.00			On 6/2/03 the Committee recommended allocating the remaining funds (\$63,427) to this project and discussed ways to reduce its cost.
<b>Total:</b>		<b>\$159,999.00</b>			

2002

Type of Project/Site	Estimated Cost	Recommendation	Actual Cost	Date Complete	Comments
Sidewalk Project - Southdowns from Jordan and along the north side of Circle and Ruby lane to Nancy Street.	\$148,000.00	\$108,731 (+ \$39,000 from Greenways)			The original estimate was for a sidewalk on the north side of the street, but the Engineering staff and neighborhood preferred south side at estimated cost of \$129,000 (and an additional \$19,000 for the leg from Jordan to Mitchel). On 6/19/02 the Council allocated \$59,547 for this project and, as noted below, on 12/18/02, the Council voted to shift \$49,184 from the East 2nd Street project to this one as well. On May 8, 2003 the Greenways group agreed to fund the remaining \$39,000.
Design for sidewalk and storm water project - Jefferson Street from East 3rd to East 10th Street.	\$27,840.00	\$27,840.00			
Design for sidewalk and stormwater project - East 5th Street from 1 block east of Overhill to Union.	\$28,832.00	\$28,832.00			
Streetscape Plan - East 2nd from High Street to College Mall Road.	\$49,184.00	\$0.00			On 12/18/02 the Common Council voted to shift these funds (\$49,184) to the Ruby Lane project (above)
Sidewalk design - East Allen from Lincoln to Henderson Street	\$4,000 - \$8,000	\$7,400.00			
<b>Total:</b>	<b>about \$160,000</b>	<b>\$172,803.00</b>			

## 1996 - 2001

### 2001

Site	Cost
Maxwell Ln - Henderson to Manor Rd	\$2,607.85
N. Kinser - BHSN to Ridgefield	\$395.00
Winslow Road	\$27,000.00
Hillsdale Drive	\$34,752.70
Parkridge Road	\$22,990.00
N Dunn - 45/46 to Tammarack	\$74,746.70
Maxwell Ln - Sheridan to Clifton	\$10,700.00
Sare Road	\$275.00
Clifton MUP - Maxwell to 1st	\$1,532.75
Grimes - Henderson to Woodlawn	
<b>Total 2001</b>	<b>\$175,000.00</b>

### 2000

Site	Cost
Maxwell Ln - Henderson to Manor Rd	\$29,516.54
Hillsdale - 3rd to 5th	\$21,000.00
Hillsdale - 5th to 7th	\$24,885.00
Parkridge - Cambridge to Sheffield	\$29,800.00
N Kinser - BHSN to Ridgefield	\$46,960.53
Clifton MUP	
Sare Road	\$14,860.00
<b>Total 2000</b>	<b>\$167,022.07</b>

### 1999

Site	Cost
Maxwell Ln - Henderson to Manor	\$145,105.57
3rd & Union	\$4,186.43
Atwater - Mitchell to High	\$708.00
Clifton MUP	
<b>Total 1999</b>	<b>\$150,000.00</b>

### 1998

Site	Cost
Kinser - Marsh to Skyline	\$19,456.88
Covenantor - High to Nota	\$14,548.08
Atwater - Mitchell to High	\$430.04
Kirkwood I - Walnut to Grant	\$115,565.00
Parkridge	
<b>Total 1998</b>	<b>\$150,000.00</b>

### 1997

Site	Cost
7th - Bryan to Hillsdale	\$18,052.65
2nd - Walnut to Basswood	\$1,900.00
Willow Manor	\$5,408.00
Atwater	\$9,281.25
S Walnut Sanitation and Animal	\$2,658.75
6th St	\$3,363.40
17th & Kinser	\$3,600.00
Ramps	\$24,000.00
Parkridge east Park	\$10,000.00
downtown lights	\$10,000.00
RR xings (sidewalks on 7th & 8th)	\$10,000.00
signals 10th & Fee - 2nd & rogers	\$10,000.00
Road Markings	\$20,514.50
<b>Total 1997</b>	<b>\$128,778.55</b>

### 1996

Site	Cost
7th - Bryan to Hillsdale	\$81,264.97
Ramps	\$28,800.03
Traffic Calming	\$38,035.00
<b>Total 1996</b>	<b>\$148,100.00</b>