

**BLOOMINGTON TRAFFIC COMMISSION  
AGENDA  
January 24, 2018  
4:30 P.M. – COUNCIL CHAMBERS**

- I. Call to Order
- II. Election of Chair and Vice Chair
- III. Approval of Minutes – December 13, 2017
- IV. Public Comment
- V. Communications from Commission
- VI. Reports from Staff
- VII. Old Business
- VIII. New Business
  - A. 6<sup>th</sup> Street and Maple Street intersection - remove on-street parking\*
  - B. Southern Drive – remove on-street parking\*
  - C. Washington Street - remove on-street parking\*
- IX. Traffic Inquiries
  - A. Martha Street – no parking request
- X. Adjournment

*Next meeting – February 28, 2018*

*\*Action Requested/Public comment prior to any vote (limited to five minutes per speaker)*

**Auxiliary aids for people with disabilities are available upon request with adequate notice. Please call (812) 349-3429 or e-mail [human.rights@bloomington.in.gov](mailto:human.rights@bloomington.in.gov).**

**City of Bloomington Traffic Commission Minutes  
December 13, 2017 in the Council Chambers, City Hall**

*Traffic Commission minutes are transcribed in a summarized outline manner. Audio recordings of the meeting are available in the Planning and Transportation Department for reference.*

**Attendance**

Traffic Commission: Abigail Pietsch, Andrew Cibor, Chris Etter, Larry Haywood, Judi Maki, Joe VanDeventer, Sarah Ryterband, and Shane Rasche,

Others in Attendance: Sara Gomez (Staff), Wylie Hoover (6<sup>th</sup> Street Neighborhood), Donna Storm (Middle Way House), Scott Robinson (Staff), and SeyedAmir Kaboli Farshchi (Staff)

- I. **Call to Order** (~4:35 PM)
- II. **Approval of Minutes** – October 25, 2017- Ms. Ryterband motioned to approve the minutes. Mr. Haywood seconded the motion. **The motion passed 8-0.**
- III. **Public Comment** – none.
- IV. **Communications from Commission** – Mr. Cibor provided an update on a number of on-going and upcoming city transportation projects such as Rockport Road Sidewalk, Kinser Pike Sidewalk, signalized intersections, and the Trades District. Information for these and other projects is available on the City’s website.
- V. **Reports from Staff** – Mr. Robinson gave a summary about the Downtown Parking Study and some meetings between the consultant, DESMAN, and various downtown stakeholders on December 6<sup>th</sup> and December 7<sup>th</sup>, 2017. He asked commissioners to complete the online survey of parking study and share it with others.
- VI. **Old Business**
  - A. **Neighborhood Traffic Calming Program** – Mr. Robinson asked for guidance from the commission regarding Neighborhood Traffic Calming Program. He said the current program is complicated and challenging. Moving forward staff would like to change and improve the program to be more responsive to resident needs. He suggested finding a temporary traffic solution could be helpful and provide better customer service. Ms. Ryterband asked staff about the current speed and traffic counts for Moores Pike and Olcott Boulevard. Staff will provide an update at a future meeting.

## **VII. New Business**

### **A. Parking changes (Bus Zone, Limited Parking, No Parking) for sections of S. Washington Street**

– Ms. Gomez gave an overview of this request as detailed in the packet. She explained the history behind this request and some of the current challenges. Staff is seeking recommendations from the Commission. Ms. Ryterband asked how many parking spaces will be lost and Ms. Gomez answered between seven to ten spaces. Ms. Maki asked who uses parking spaces in that area, Ms. Gomes' response was mostly residents of apartments. Mr. Etter talked about new apartments which were built during past few years and parking problems. Ms. Ryterband suggested asking business owners to use their use their parking lots during off-hours and Mr. Cibor said shared parking should be part of the Parking Study. Ms. Storm talked about some parking issues for Middle Way House. They use two hours parking spots and move their cars frequently since they do not have enough staff and time to enforce the reserved parking spaces designed for Middle Way House. Not having access to these reserved spaces causes safety issues for their volunteers and clients – especially during nights. Mr. Cibor motioned to install yellow curbs at the driveways; Ms. Ryterband seconded. **The motion passed 8-0.**

**B. Accessible Parking** – Mr. Robinson gave a summary about accessible parking changes as detailed in the packet. Ms. Ryterband commented about how few existing accessible parking spaces there are and Mr. Cibor said there are not enough. Mr. Cibor motioned to approve as detailed in the staff report to install accessible parking and to revise Title 15; Ms. Maki seconded. **The motion passed 8-0.**

## **VIII. Traffic Inquiries**

**A. Rogers Street and 6th Street – pedestrian crossing.** – Mr. Farshchi gave an overview of one Traffic Inquiry regarding pedestrian crossing improvements at the intersection of 6<sup>th</sup> Street and Rogers Street. He said staff requests guidance from the Commission on any next steps such as data, further analysis, and any possible solutions. Mr. Hoover, who made the request, said this is based on low visibility and safety issues. He asked the Commission to consider installing a flashing crosswalk at the intersection of 6<sup>th</sup> Street and Rogers Street. Mr. Rasche talked about the traffic flow in that area. Mr. Cibor asked about the reason why people use that intersection more than the other ones. Ms. Ryterband agreed with the challenges and asked staff to study about the number of pedestrian and bicyclist crossing that area as well as possible solutions. Mr. Robinson talked about the big picture and more traffic issues are anticipated in this area because of the Trades District and B-Line Trial.

## **IX. Adjournment (~5:35 PM)**

*Next meeting – January 24, 2018*

*\*Action requested*

---

## MEMORANDUM

---

To: Traffic Commission  
From: Sara Gomez, Engineering Field Specialist  
Date: January 24, 2018  
Re: 6<sup>th</sup> and Maple – Remove On-Street Parking to Improve Line of Sight

---

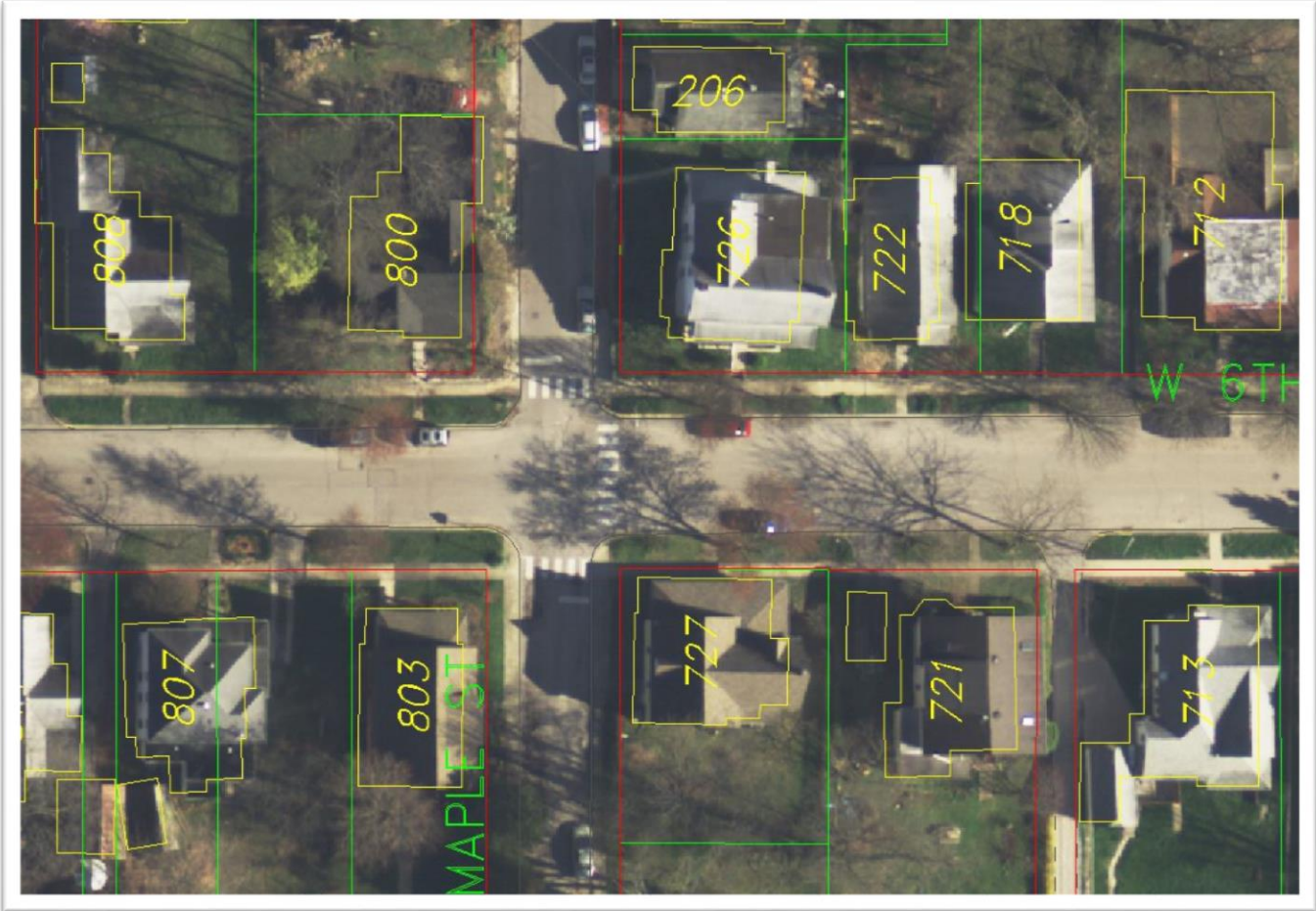
---

### **Background**

This inquiry is in response to a concern Parking Enforcement received from a crossing guard regarding on-street parking creating line of sight challenges at the 6th Street intersection with Maple Street. When heading north or south on Maple attempting to cross or turn onto 6<sup>th</sup> St it is difficult to see around the parked cars on the north or south side of 6<sup>th</sup> St. The crossing guard stated this affects the safety of the crosswalks on 6<sup>th</sup> and Maple during their shift.

City staff evaluated the intersection and determined that sight distance at this intersection could be improved for southbound and northbound vehicles on Maple St by removing one to two spaces on the north and south side of 6<sup>th</sup> St east and west of Maple.

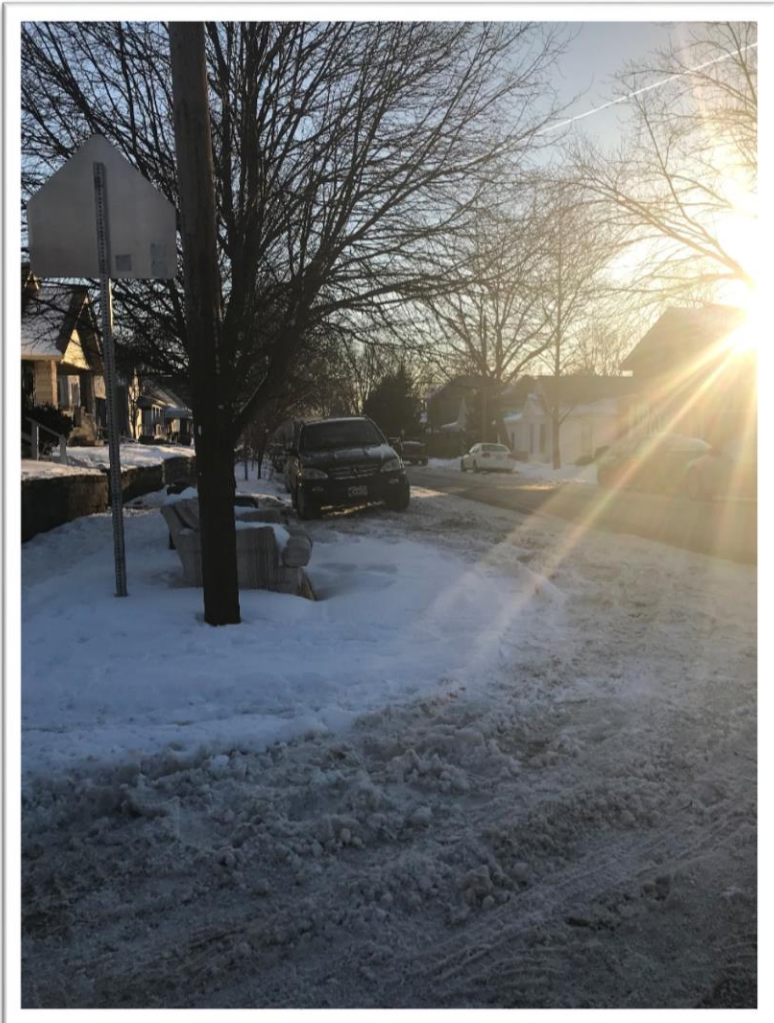
**Recommendation:** Staff recommends removing one to two parking spaces on the north and south side of 6<sup>th</sup> St directly east and west of Maple St. and installing yellow curb. A more detailed Title 15 amendment would be prepared if this request is forwarded to the Common Council for their consideration.



Aerial view of 6<sup>th</sup> and Maple intersection



Drivers' line of sight looking west at 6th St traveling south on Maple St



Current drivers' line of sight looking east at 6th St traveling south on Maple St



Current drivers' line of sight looking west at 6th St traveling north on Maple St



Current drivers' line of sight looking east at 6th St traveling north on Maple St

---

## MEMORANDUM

---

To: Traffic Commission  
From: Liz Carter, Engineering Technician  
Date: January 24, 2018  
Re: East Southern Dr. – Remove On-Street Parking to Facilitate Sanitation Truck Access

---

### **Background**

This inquiry is in response to a concern brought to our attention by Adam Wason, Director of Public Works, after Sanitation Department personnel relayed to him that they struggled to get sanitation trucks through Southern Drive as well as to turn them around at the dead end. The concern is that on-street parking on the north and south sides of Southern Drive does not leave adequate space in the street for sanitation trucks to complete their work.

City staff evaluated the street and determined that the maximum width of the street was 24' in the center, 22' on the west side, and 21' 6" on the east side. There is a "No Parking Here to Corner" sign on the north side of the street located 88' east of the Walnut/Southern intersection.

**Recommendation:** Staff recommends removing on-street parking on the south side of Southern Drive. A more detailed Title 15 amendment would be prepared if this request is forwarded to the Common Council for their consideration.





Looking east on E. Southern Drive.



Looking west on E. Southern Dr.



Parking is allowed on north and south sides of street except where the "No Parking Here to Corner" sign is situated.

88'  
"No Parking Here to Corner" sign

22'

E Southern Dr

E Southern Dr

24'

E Southern Dr

21'-6"

E Southern Dr

End of Street

E Southern Dr

---

## MEMORANDUM

---

To: Traffic Commission  
From: Liz Carter, Engineering Technician  
Date: January 24, 2018  
Re: Washington Street North of 19<sup>th</sup> – Remove On-Street Parking to Allow EMS Access

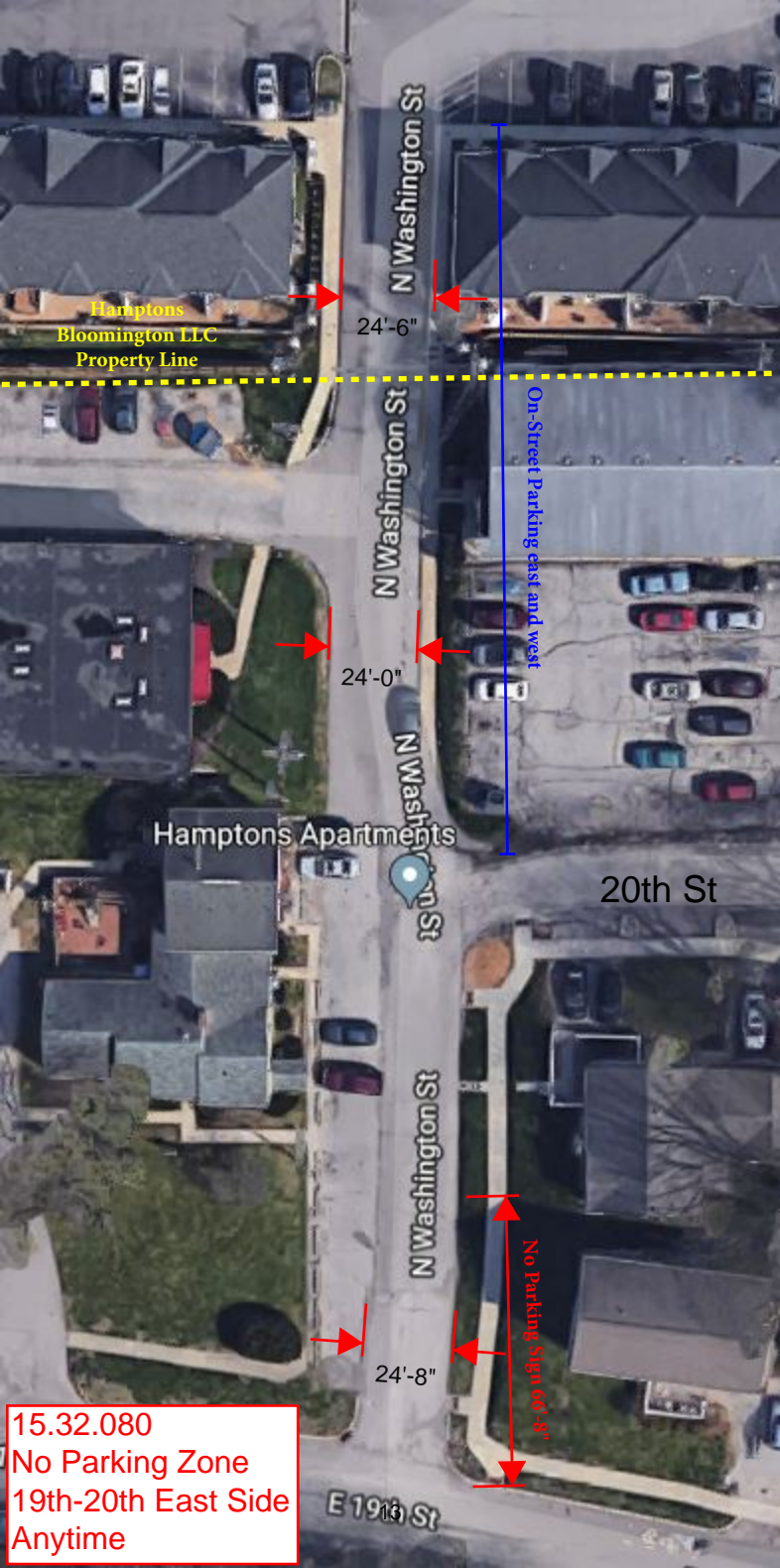
---

### **Background**

This inquiry is in response to a concern brought to our attention by Adam Wason, Director of Public Works, after Emergency Management Services personnel relayed to him that they could not drive emergency vehicles through Washington Street north of 19<sup>th</sup> Street. The concern is that on-street parking on the east and west side of Washington Street, north of 19<sup>th</sup> Street, does not leave adequate space in the street for an emergency vehicle to pass.

City staff evaluated the street and determined that, at a maximum width of 24' 8", N. Washington was not wide enough to accommodate on-street parking while keeping appropriate clearance for emergency vehicles. Between 19<sup>th</sup> and 20<sup>th</sup> Streets, there is angled parking to the west and a no parking sign 66' 8" from the intersection of Washington and 19<sup>th</sup> Streets on the east side of the street. Based on 15.32.080 of the municipal code, there is no parking on the east side of Washington Street between 19<sup>th</sup> and 20<sup>th</sup> Streets any time. North of 20<sup>th</sup> Street, there is on-street parking on both the east and west sides of the street.

**Recommendation:** Staff recommends removing on-street parking on both the east and west sides of N. Washington Street from 19<sup>th</sup> Street to the Hamptons Apartments property line. A more detailed Title 15 amendment would be prepared if this request is forwarded to the Common Council for their consideration. Furthermore, if this request were to be approved, staff recommends requesting that the property owner to the north of the city-owned section of Washington Street also establish no on-street parking on the east and west sides of the street.



Hamptons  
Bloomington LLC  
Property Line

24'-6"

24'-0"

Hamptons Apartments

On-Street Parking east and west

20th St

24'-8"

No Parking Sign 66'-8"

15.32.080  
No Parking Zone  
19th-20th East Side  
Anytime

E 19th St



---

**MEMORANDUM**

---

To: Traffic Commission  
From: Seyedamir Kaboli Farshchi, Long Range Planner  
Date: January 18, 2018  
Re: Traffic Inquiries

---

---

**Background**

The Planning and Transportation Department received one Traffic Inquiry from the public this month, which is outlined below. The nature of Traffic Inquiries vary, but are within the purview of the Traffic Commission. The intent of the Traffic Inquiry process is to hear citizen requests and then leverage both the advisory role of the Commission, as well as citizen input, before a request is formally considered. The Traffic Inquiries process also allows City staff to properly evaluate and prepare information for any potential future action items to be heard by the Commission.

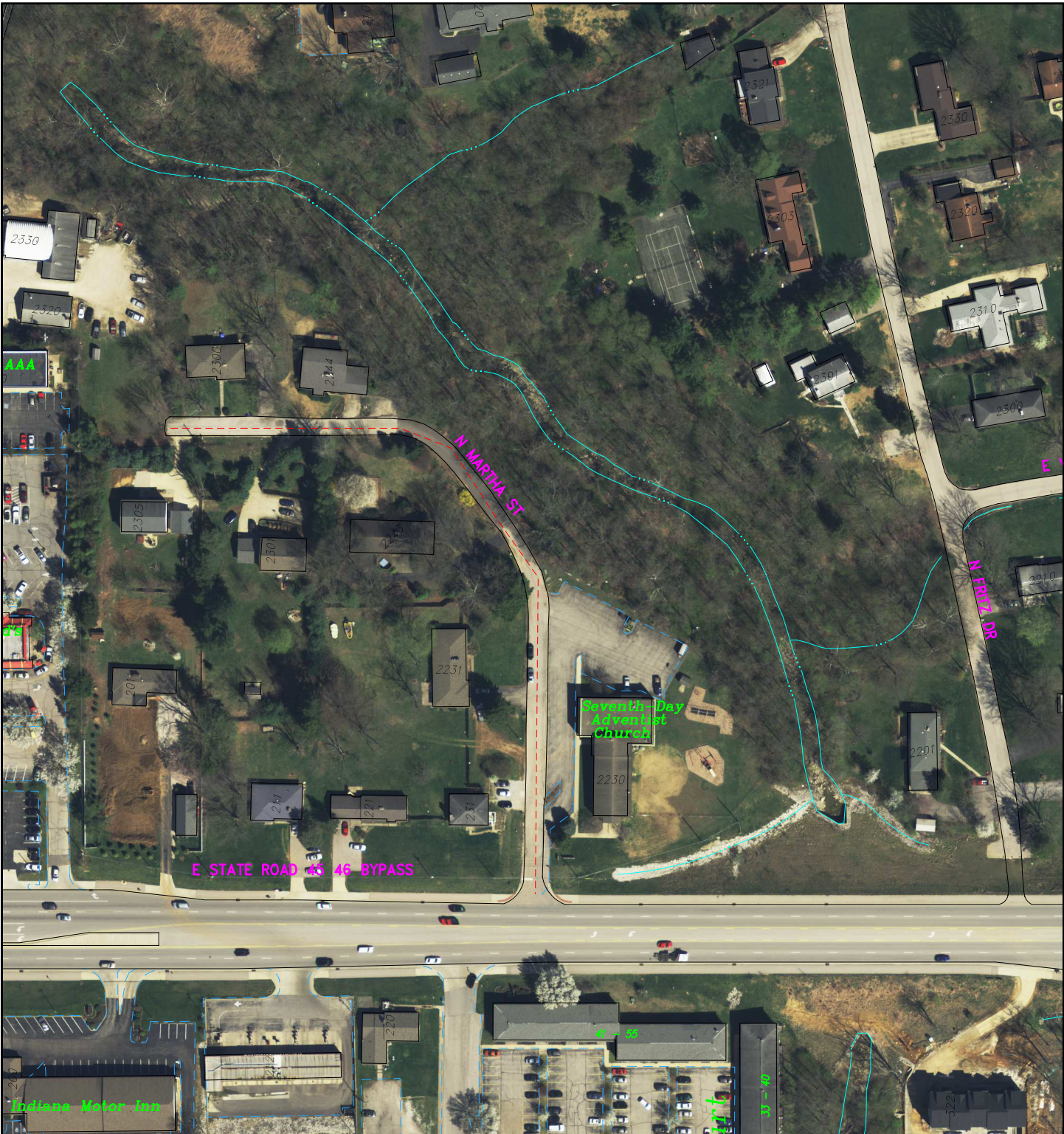
Basic information on Traffic Inquiries received by the Department are summarized below, as well as listed on the agenda. A respective map is included for each Traffic Inquiry within the meeting packet for reference. Citizens that make Traffic Inquiries (either by phone, email, letter, U-Report, or in person) will be invited to attend the respective Traffic Commission meeting and given an opportunity to provide additional information.

**Traffic Inquiries**

- Martha Street – no parking request for south side of the street (U-Report).
  - U-Report – “Every time there is an IU sporting event or the neighborhood students have a party, people park on both sides of our narrow street and block us in. Is there anyway to put ‘no parking’ signs on the south side of the street (Martha St.)?” Note – a photo was submitted and was taken at night but is not included with this packet.

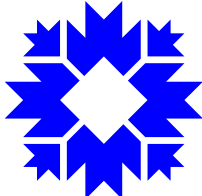
**Recommendations**

Staff requests that the Traffic Commission identify if a Traffic Inquiry needs further analysis before a future case can be heard. The specific types of data and information that the Traffic Commission would like to review, as well as any possible solutions to consider, are also requested by staff.



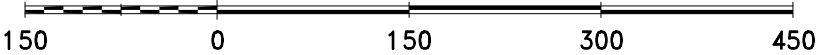
### Martha Street - Traffic Inquiry

City of Bloomington  
Planning & Transportation



Scale: 1" = 150'

By: robinsos  
19 Jan 18



For reference only; map information NOT warranted.