

**BLOOMINGTON TRAFFIC COMMISSION
AGENDA
January 28, 2015
5:30 P.M. – COUNCIL CHAMBERS**

- I. Call to Order
- II. Approval of Minutes – December 17, 2014
- III. Communications from Commission
- IV. Reports from Staff
 - A. FHWA Approval to Experiment – Bicycle Boxes and other markings
 - B. Fairview Street Sidewalk – design contract
 - C. 10th Street and Woodlawn Avenue Study and Extension
- V. Traffic Inquiries
 - A. 3rd Street and Patterson Drive – right turn lane
 - B. 3rd Street and Liberty Drive – congestion
 - C. 3rd Street and Indiana Avenue – right turn on red restriction
- VI. Old Business - none
- VII. New Business –
 - A. Hillsdale Drive and 5th Street – parking restriction*
 - B. Monon Drive and Walnut Street – parking restriction*
- VIII. Adjournment

Next meeting –February 25, 2015

*(*Recommendations Requested / Public comment prior to vote – limited to five minutes per speaker)*

**City of Bloomington Traffic Commission Minutes
December 17, 2014 in the Council Chambers, City Hall**

Traffic Commission minutes are transcribed in a summarized outline manner. Audio recordings of the meeting are available in the Planning and Transportation Department for reference.

Attendance

Traffic Commission: Mike Avila, James Batcho, Ryan Cobine, Judi Maki, Sarah Ryterband, Joe VanDeventer, and Scott Wickersham.

Others in Attendance: Ed Deckard, Nate Nickel (Staff) and Scott Robinson (Staff).

- I. Call to Order (~5:30 PM)**
- II. Approval of Minutes – none**
- III. Communications from Commission - none**
- IV. Reports from Staff**
- V. Traffic Inquiries**
 - A. Smith House – parking**
 - B. 10th Street and Monroe Street – speed**
 - C. Monon Drive and Walnut Street - parking:** Mr. Deckard spoke regarding traffic issues along Monon Drive that are occurring as a result of on-street parking. He made a request to restrict parking along the south-side of Monon Drive to better accommodate fire trucks, ambulances and other large vehicles.
- VI. Old Business - none**
- VII. New Business –**
 - A. Wylie Street and Henderson Street – parking restriction -** Mr. Cobine motioned, and Mr. Wickersham seconded, to approve the recommendation as presented. The motion passed 7-0.
 - B. Wylie Street and IU Health Bloomington – parking restriction and Loading Zone -** Mr. Cobine motioned, and Mr. Batcho seconded, to approve the recommendation as presented. The motion passed 7-0.
- VIII. Adjournment (~6:45 PM)**

Next meeting – January 28, 2015



U.S. Department
of Transportation
**Federal Highway
Administration**

OCT 15 2014
1200 New Jersey Avenue, SE
Washington, D.C. 20590

OCT - 9 2014

In Reply Refer to:
HOTO-1

Tom Micuda, AICP
Director
Planning and Transportation Department
City of Bloomington
P.O. Box 100
401 North Morton Street, Suite 130
Bloomington, IN 47402

Dear Mr. Miduca:

Thank you for your October 5 revised request to experiment with bicycle boxes, dashed bicycle lanes, and an alternative design of the shared-lane marking at various locations in the City. Your revised request to experiment is approved limited to the locations stated in the request. In the event you would like to expand these experimental devices to additional locations, please contact us stating that you would like to expand the experiment.

We look forward to receiving your semi-annual status update(s) and your final evaluation report at the end of the study period in accordance with Item I of Paragraph 11 in Section 1A.10 of the 2009 *Manual on Uniform Traffic Control Devices for Streets and Highways*.

For recordkeeping purposes, we have assigned the following Official Ruling number and title: "9(09)-71(E) – various Bicycle Facilities – Bloomington, IN." Please refer to this number and title in future correspondence.

Thank you for your interest in improving traffic safety for bicyclists.

Sincerely yours,

Mark R. Kehrli
Director, Office of Transportation
Operations



MEMORANDUM

To: Traffic Commission
From: Nate Nickel, Senior Long Range Planner
Date: January 20, 2015
Re: Traffic Inquiries

Background

The Planning and Transportation Department has received several Traffic Inquiries from the public, which are outlined below. The nature of Traffic Inquiries vary, but are within the purview of the Traffic Commission. The intent of Traffic Inquiries is to hear citizen requests and then leverage both the advisory role of the Commission, as well as citizen input, before a request is formally considered. The Traffic Inquiries process also allows City staff to properly evaluate and prepare information for any potential future Traffic Inquiries to be heard by the Commission.

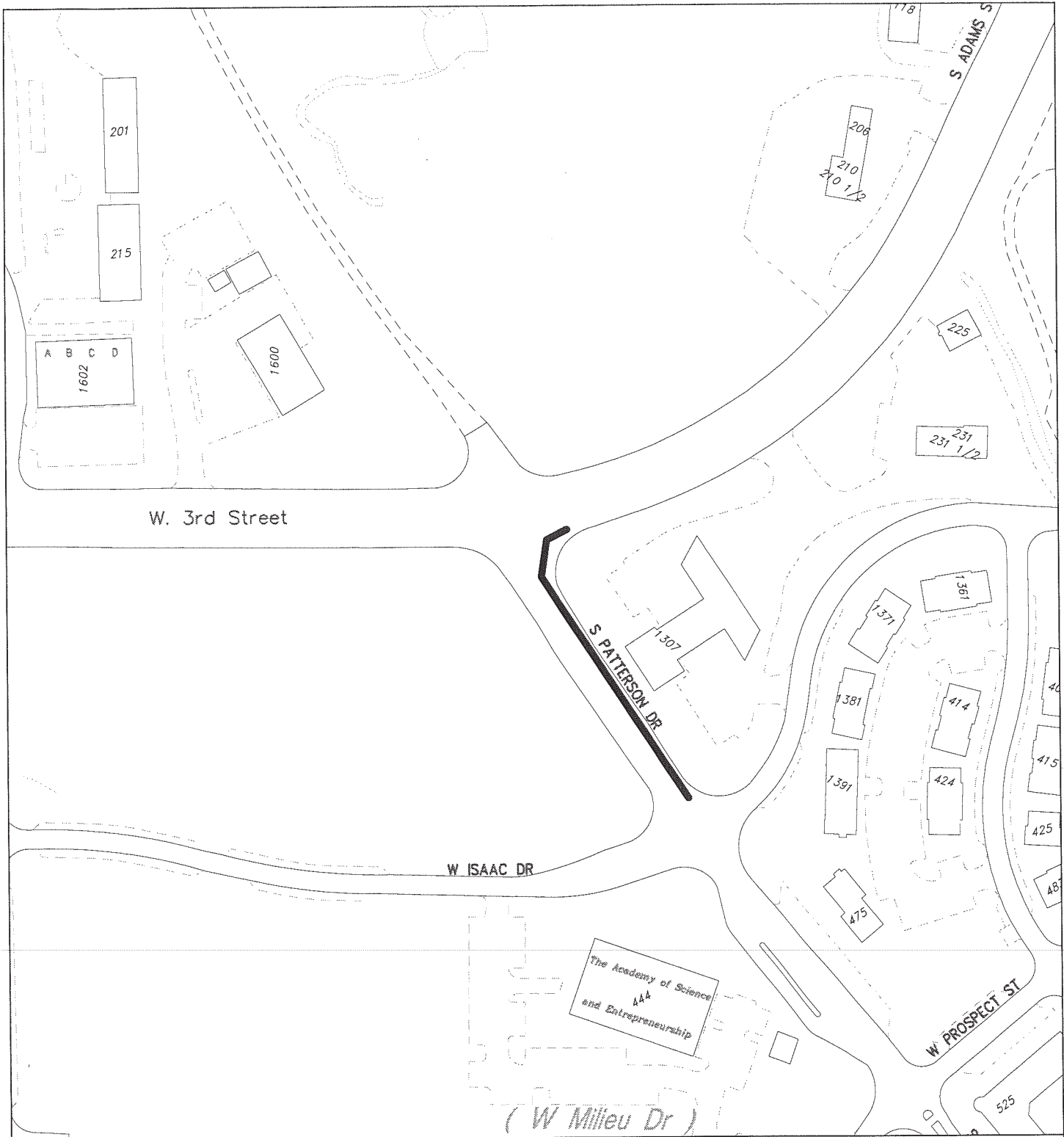
Basic information on Traffic Inquiries received by the Department are summarized below, as well as listed on the agenda. A respective map and site photos are also included for each Traffic Inquiry within the meeting packet for reference. Citizens that make Traffic Inquiries (either by phone, email, letter, U-Report, or in person) will be invited to attend the respective Traffic Commission meeting and given an opportunity to provide additional information.

Traffic Inquiries

- W. 3rd Street and Patterson Drive – right turn lane
- W. 3rd Street and Liberty Drive – congestion
- E. 3rd Street and Indiana Avenue – right turn on red restriction

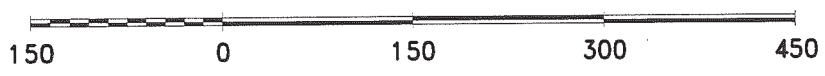
Recommendations

Staff requests that the Traffic Commission identify those Traffic Inquiries that will need further analysis before a future case can be heard. Specific types of information, as well as possible solutions to consider, are also requested by staff.



W. 3rd Street and Patterson Drive – Right Turn Lane

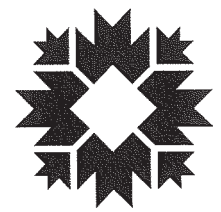
By: nickeln
15 Jan 15



For reference only; map information NOT warranted.



City of Bloomington



Scale: 1" = 150'



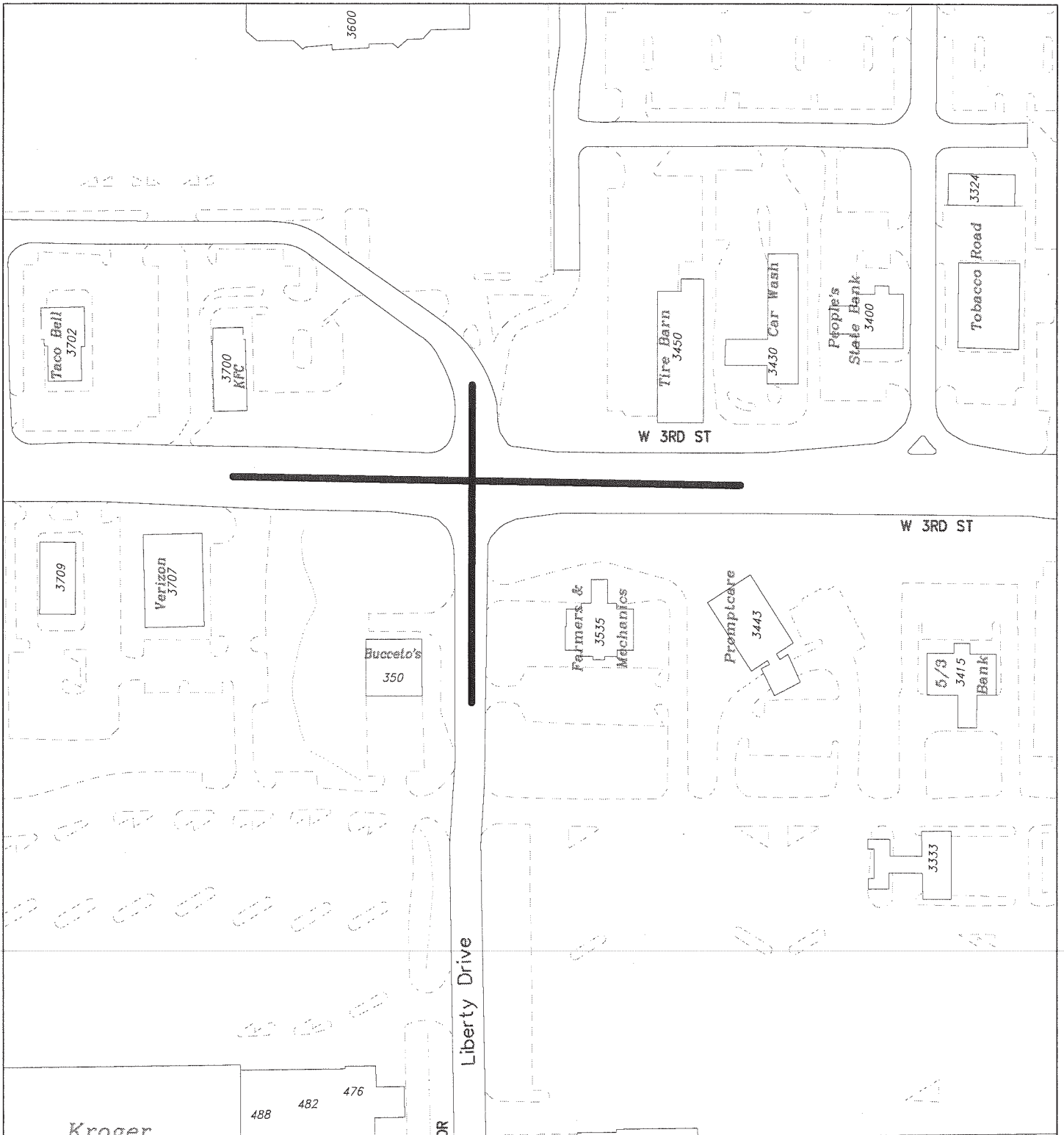
Patterson Drive looking northbound towards W. 3rd Street (~40 feet).



W. 3rd Street looking east from the intersection of Patterson Drive (~60 feet).

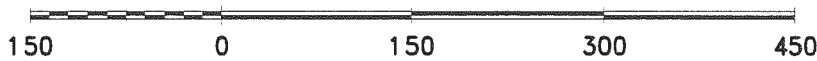


W. 3rd Street looking west from the intersection of Patterson Drive (~60 feet).



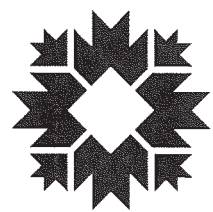
W. 3rd Street and Liberty Drive - Congestion

By: nickeln
15 Jan 15



For reference only; map information NOT warranted.

City of Bloomington



Scale: 1" = 150'



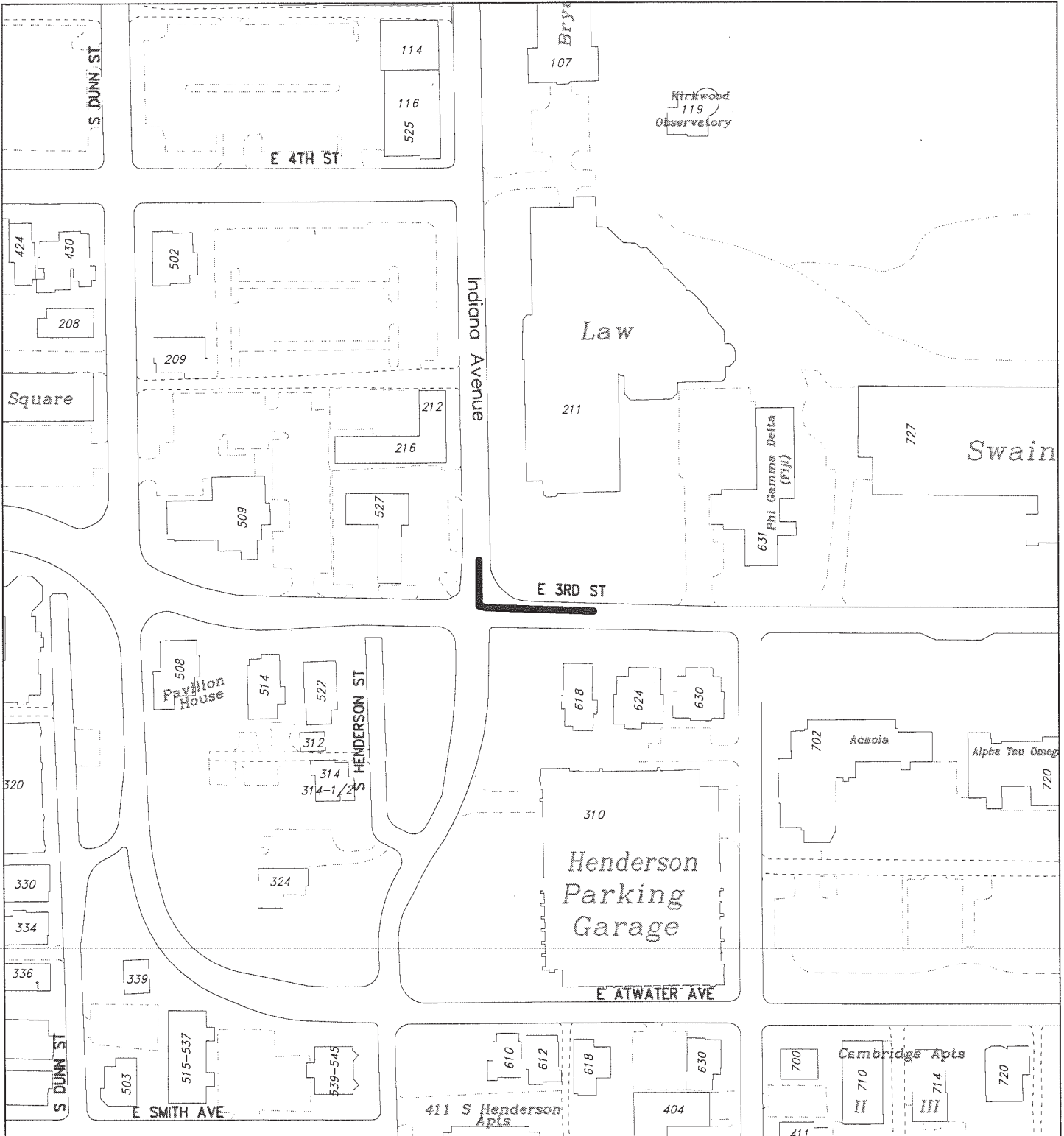
Liberty Drive looking northbound towards W. 3rd Street (~35 feet).



Liberty Drive looking southbound towards W. 3rd Street (~45 feet).



W. 3rd Street looking westbound towards Liberty Drive (~65 feet).



E. 3rd Street and Indiana Avenue – Right Turn on Red Restriction

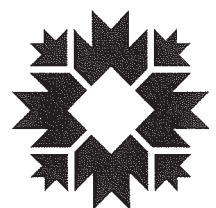
By: nickeln
15 Jan 15



For reference only; map information NOT warranted.



City of Bloomington



Scale: 1" = 150'



E. 3rd Street looking westbound towards Indiana Avenue (~30 feet).



Looking northbound down Indiana Avenue at the intersection with E. 3rd Street (~35 feet).



Looking eastbound down E. 3rd Street from the intersection with Indiana Avenue (~30 feet).



MEMORANDUM

To: Traffic Commission
From: Scott Robinson, Planning Services Manager
Date: January 21, 2015
Re: Hillsdale Drive No Parking Zone Request

Background

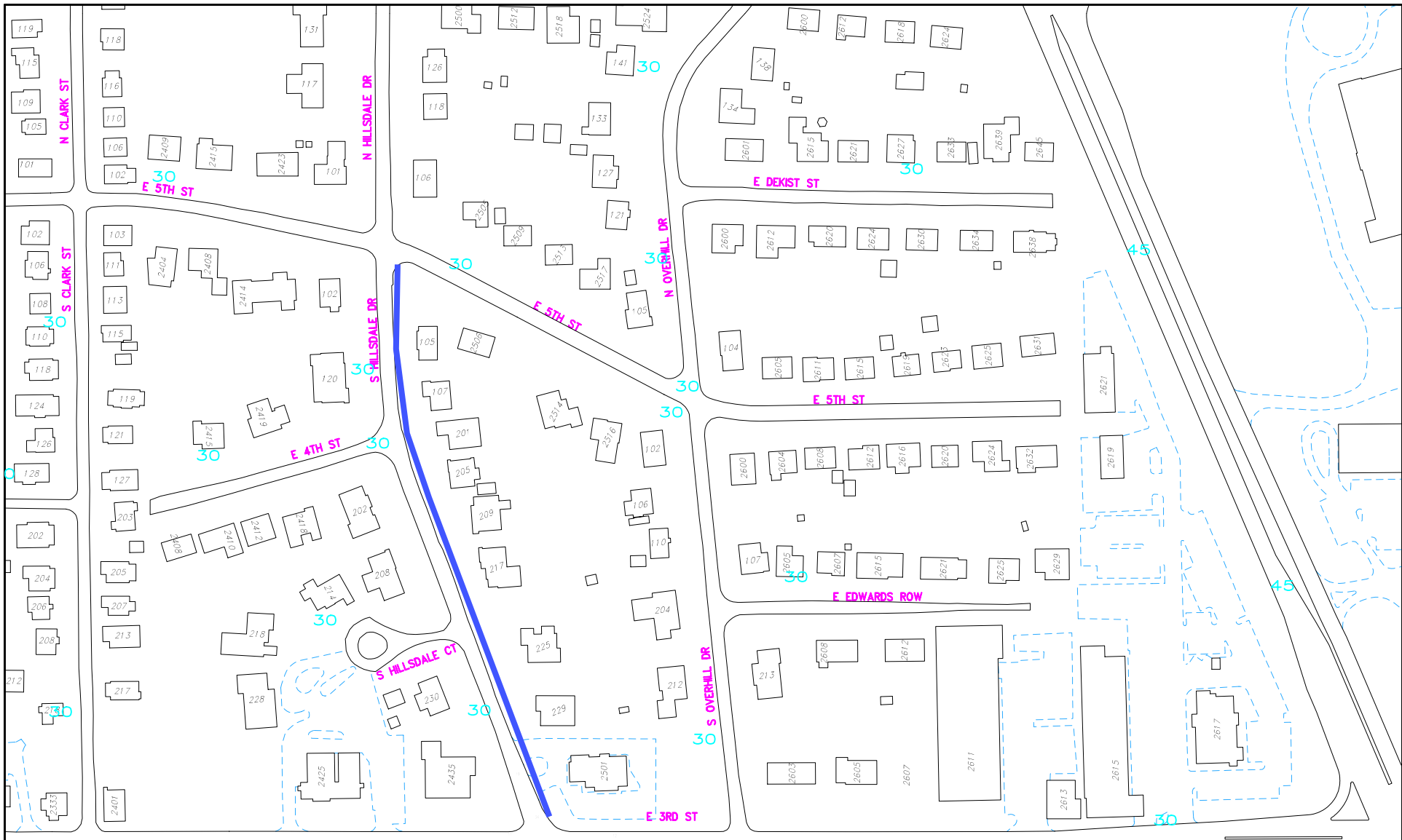
The City of Bloomington Planning and Transportation Department received a request from a citizen to make changes to the on-street parking conditions along Hillsdale between E. 3rd Street and E 5th Street. Currently there are no parking restrictions along this section of Hillsdale Drive. The request would like to limit parking to one side of the street because of the narrow width of the pavement (~ 24 feet wide) and general concerns over access with vehicles parked on both sides of the street. Additionally, many homes are rental in this area which tends to increase parking demands. The Traffic Commission reviewed the request at their October 22, 2014 meeting. Nobody was present to discuss the request. The consensus of the Commission was to move forward with this parking restriction request.

To accommodate this request, Title 15 of the Bloomington Municipal Code would need to be amended. Specifically, 15.32.080, Schedule M – No Parking Zones, would need to include the location for the no parking area along Hillsdale Drive. If approved, a detailed amendment will be prepared once this request is forwarded to the Common Council for their consideration.



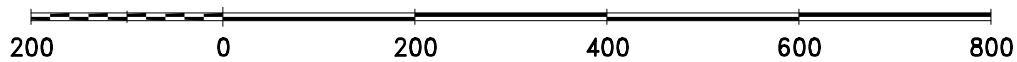
Hillsdale Drive looking south towards 3rd Street

Recommendation: Staff recommends a no parking zone along the east side of Hillsdale Drive, from 5th Street to 3rd Street. The east side of the street is preferred because there is currently not a sidewalk where the west side has a sidewalk, which is beneficial to accommodating on-street parking. No parking for this request would be for any time under the standard provisions of 15.32.080 No Parking Zones.



Hillsdale Drive and 5th Street - parking

By: robinsos
14 Oct 14



For reference only; map information NOT warranted.

City of Bloomington
Planning & Transportation



Scale: 1" = 200'



MEMORANDUM

To: Traffic Commission
From: Scott Robinson, Planning Services Manager
Date: January 21, 2015
Re: Monon Drive No Parking Zone Request

Background

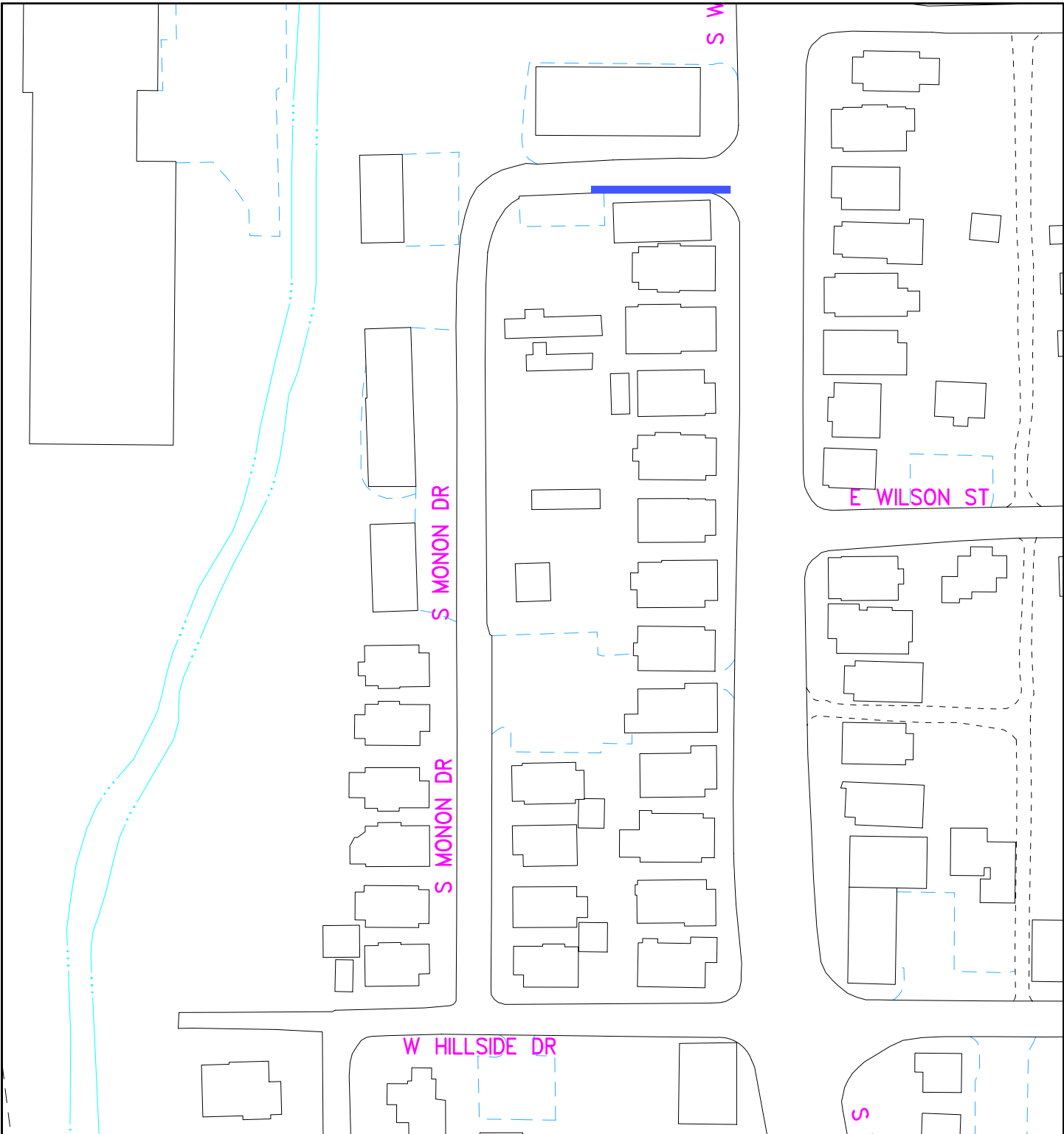
The City of Bloomington Planning and Transportation Department received a request from a citizen to make changes to the on-street parking conditions along W. Monon Drive just west of S. Walnut Street. Currently there are no parking restrictions along this section of Monon Drive. The request would like to limit parking to one side of the street because of the narrow width of the pavement (~ 25 feet wide) and the stop condition at South Walnut Street conflicts with on-street parked vehicles. Additionally, with vehicles parked on both sides of the street the narrow road width further limits access to large delivery, service, and emergency vehicles onto Monon Drive. Concerns over emergency and other City service access and general safety were expressed when vehicles are parked on both sides of Monon Drive. The Traffic Commission reviewed the request at their December 17, 2014 meeting. Mr. Deckard was presented his request to the Commission. The consensus of the Commission was to move forward with this parking restriction request.

To accommodate this request, Title 15 of the Bloomington Municipal Code would need to be amended. Specifically, 15.32.080, Schedule M – No Parking Zones, would need to include the location for the no parking area along Monon Drive. If approved, a detailed amendment will be prepared once this request is forwarded to the Common Council for their consideration.



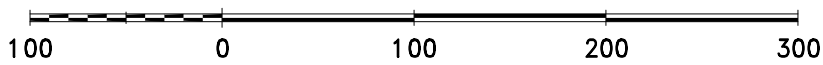
Monon Drive looking east towards Walnut Street

Recommendation: Staff recommends a no parking zone along the south side of Monon Drive, from Walnut Street to ~80' west of Walnut Street where the driveway begins for the building at 1300 S. Walnut Street. No parking for this request would be for any time under the standard provisions of 15.32.080 No Parking Zones.

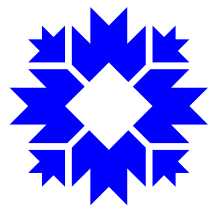


Monon Drive - Parking

By: robinsos
9 Dec 14



City of Bloomington
Planning & Transportation



Scale: 1" = 100'

For reference only; map information NOT warranted.