

**BLOOMINGTON TRAFFIC COMMISSION**  
**AGENDA**  
**September 23, 2015**  
**5:30 P.M. – KELLY ROOM (Suite #155), CITY HALL**

- I. Call to Order
- II. Approval of Minutes – August 26, 2015
- III. Public Comment
- IV. Communications from Commission
- V. Reports from Staff –
  - A. Crosswalk Marking Guidance – update
- VI. Old Business - none
- VII. New Business –
  - A. On-street parking – revise current spaces along E. 7<sup>th</sup> Street for Bloomington Transit bus stops.
  - B. On-street parking configurations – discussion for new development projects.
- VIII. Traffic Inquiries –
  - A. On-street parking - revise the current time regulations for 2 on-street parking spaces located at 1290-1270 N. College Avenue (in front of the Gateway Building) and 1 on-street parking space located at 601 N. College Avenue (in front of the 10<sup>th</sup> & College Building).
- IX. Adjournment

*Next meeting – October 21, 2015*

**City of Bloomington Traffic Commission Minutes (Draft)**  
**August 26, 2015 in the Hooker Conference Room, City Hall**

*Traffic Commission minutes are transcribed in a summarized outline manner. Audio recordings of the meeting are available in the Planning and Transportation Department for reference.*

**Attendance**

Traffic Commission: Andrew Cibor, Ryan Cobine, Judi Maki, Abigail Pietsch, Shane Rasche (proxy for James Batcho), Sarah Ryterband, Joe VanDeventer, and Scott Wickersham

Others in Attendance: Paula Gilbertson, Nate Nickel (Staff), and Scott Robinson (Staff).

- I. Call to Order** (~5:30 PM)
- II. Approval of Minutes** – June 24, 2015 (Ms. Maki motioned, and Mr. Cibor seconded, to approve the minutes. The motion passed 8-0).
- III. Communications from Commission** – Mr. Cibor noted changes anticipated with I-69 construction, including detours and routes for construction vehicles.
- IV. Public Comment** - none.
- V. Reports from Staff**
  - A.** Mr. Nickel introduced Neil Kopper, the City's new Project Engineer. He also provided the 2016 meeting schedule and mentioned some future agenda items. Potential topics include revisiting a previous traffic inquiry, developing crosswalk guidance, and reviewing parking configurations for new development proposals. Ms. Ryterband mentioned that back-in parking would have been perfect for 2<sup>nd</sup> Street and Fess Avenue.
- VI. Old Business** - none
- VII. New Business** –
  - A.** On-street parking day and time regulations E. 2<sup>nd</sup> Street – Mr. Nickel presented the staff report to change the day and time parking regulations for eleven on-street spaces between Fess Avenue and Henderson Street (located in front of the Bloomingfoods store). Mr. Cobine motioned, and Mr. Wickersham seconded, to approve the recommendation as presented and forward to the City Council. Ms. Gilbertson was pleased with the proposed changes and that it will better address their concerns of vehicle storage over the weekend. Mr. Cibor asked if other on-street spaces were available on the weekend. Mr. Nickel said that neighborhood parking

permits are only required Monday – Friday, 8 AM – 5 PM. The Motion passed 8-0.

**VIII. Traffic Inquiries - none**

**IX. Adjournment (~5:45 PM)**

*Next meeting – September 23, 2015*



---

## MEMORANDUM

---

To: Traffic Commission  
From: Scott Robinson, Planning Services Manager  
Date: September 16, 2015  
Re: 7<sup>th</sup> Street Bloomington Transit Bus Zones – Bus Stop Modifications

---

### Background

The City of Bloomington Planning and Transportation Department, in conjunction with Bloomington Transit, would like to formalize several transit stops along 7<sup>th</sup> Street, from Walnut Street to Indiana Avenue. This is in response to a pattern of property damage crashes by larger vehicles passing transit buses in the opposite direction as well as a means to improve transit accessibility for customers at several transit stops.

The creation of bus pull-off areas along this narrow section of 7<sup>th</sup> Street allows buses to better anticipate and avoid crash hazards from oncoming vehicles, as well as improves visibility, accessibility, and safety for transit riders getting on or off the bus. The creation of these bus zones will impact the location of several on-street metered parking spaces. Staff also evaluated curb extensions as an alternative option to improve accessibility, but this option did not adequately address the concern over crash hazards for vehicles. Below are photos of both existing and proposed transit stops.



*Left: 7<sup>th</sup> and Washington, south side, existing stop; Right: 7<sup>th</sup> and Grant, south side, existing stop.*





*Top Left: 7<sup>th</sup> and Grant looking east; Top Right: 7<sup>th</sup> and Grant looking west; Bottom Left: 7<sup>th</sup> and Dunn, south side, proposed stop; Bottom Right: 7<sup>th</sup> and Dunn, north side, existing stop.*





*Top Left: 7<sup>th</sup> and Grant, north side, existing stop (passenger waiting); Top Right: 7<sup>th</sup> and Grant, north side, proposed stop; Bottom Left: 7<sup>th</sup> and Lincoln, north side, proposed stop; Bottom Right: 7<sup>th</sup> and Washington, existing stop.*



*Left: 7<sup>th</sup> and Washington, looking east, existing stop; Right: 7<sup>th</sup> and Walnut, north side, existing stop.*

To accommodate this request, the Bloomington Municipal Code would need to be amended. Specifically, Title 15.32.110, Schedule P – Bus Zones would need to include the location for five bus zones. Staff also recommends moving one additional stop, east of Dunn Street, which is already within a no parking area and does not need to be included in Schedule P. Staff will work with Bloomington Transit on moving this stop closer to the intersection of Dunn Street and 7<sup>th</sup> Street, as well as with Parking Enforcement on any impacts to metered parking spaces from bus zones. An illustration is included for reference on the six total bus stop locations, stops to be relocated, and possible impacts to metered parking spaces.

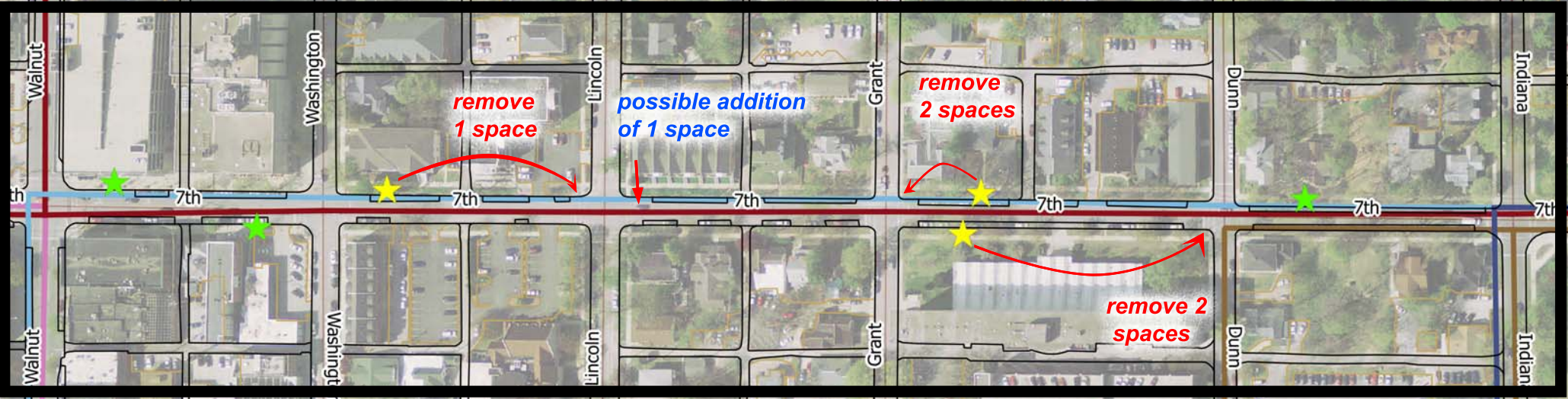
**Recommendation:** Staff recommends adding the following general locations to Title 15.32.110 Bus Zones, Schedule P: 7<sup>th</sup> Street and Walnut Street on the north side of 7<sup>th</sup> Street; 7<sup>th</sup> Street and Washington Street on the south side of 7<sup>th</sup> Street; 7<sup>th</sup> Street and Lincoln Street on the north side of 7<sup>th</sup> Street; 7<sup>th</sup> Street and Grant Street on the north side of 7<sup>th</sup> Street; and 7<sup>th</sup> Street and Dunn Street on the south side of 7<sup>th</sup> Street. If approved, a more detailed amendment will be prepared once this request is forwarded to the Common Council for their consideration. Bloomington Transit will also install concrete pads at locations where they are needed for these bus zones. These pads will provide improved access from the sidewalk to the curb for transit riders getting on and off buses.



# W 7th St Bus Stop Relocation Proposal - Alt. B

7/21/15

- \* Relocation of 3 transit stops
- \* Net removal of 4 to 5 on-street metered parking spaces



## Benefits to BT Transit:

- \* Improves accessibility of transit stops located behind on-street parking.
- \* Creates pull-off areas to reduce crash hazards for vehicles passing buses in the opposite direction.

**Legend**

- ★ BTransitBusStops
- ★ Relocation
- EdgeOfPavement
- BTransitBusRoutes
- 6
- 9cwe





---

## MEMORANDUM

---

To: Traffic Commission  
From: Nate Nickel, Senior Long Range Planner  
Date: September 23, 2015  
Re: Traffic Inquiry

---

---

### **Background**

The Planning and Transportation Department received a Traffic Inquiry from the public this month, which is outlined below. The nature of Traffic Inquiries vary, but are within the purview of the Traffic Commission. The intent of Traffic Inquiries is to hear citizen requests and then leverage both the advisory role of the Commission, as well as citizen input, before a request is formally considered. The Traffic Inquiries process also allows City staff to properly evaluate and prepare information for any potential future Traffic Inquiries to be heard by the Commission.

Basic information on Traffic Inquiries received by the Department are summarized below, as well as listed on the agenda. A respective map and site photos are also included for each Traffic Inquiry within the meeting packet for reference. Citizens that make Traffic Inquiries (either by phone, email, letter, U-Report, or in person) will be invited to attend the respective Traffic Commission meeting and given an opportunity to provide additional information.

### **Traffic Inquiries**

- The property owner requests to revise the on-street parking time regulations at both 1290-1270 N. College Avenue (the Gateway Building) and at 601 N. College Avenue (the 10<sup>th</sup> & College Building). This would be done by converting two existing 2-hour parking spaces at 1290-1270 N. College Avenue to 15 minute loading zone spaces and one currently metered parking space at 601 N. College Avenue to a 15 minute loading zone space (the parking meter would be removed).

### **Recommendations**

Staff requests that the Traffic Commission identify if this Traffic Inquiry needs further analysis before a future case can be heard. Specific types of information, as well as possible solutions to consider, are also requested by staff.

W 17TH ST

201

1290

1280

1217

1270

1211

1250

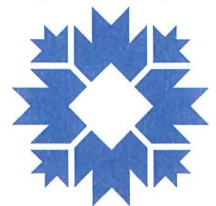
Cherry

1290-1270 N. College Avenue (Gateway Building)  
Change time regulations for 2 on-street parking spaces

By: nickeln  
4 Sep 15



City of Bloomington  
Planning & Transportation

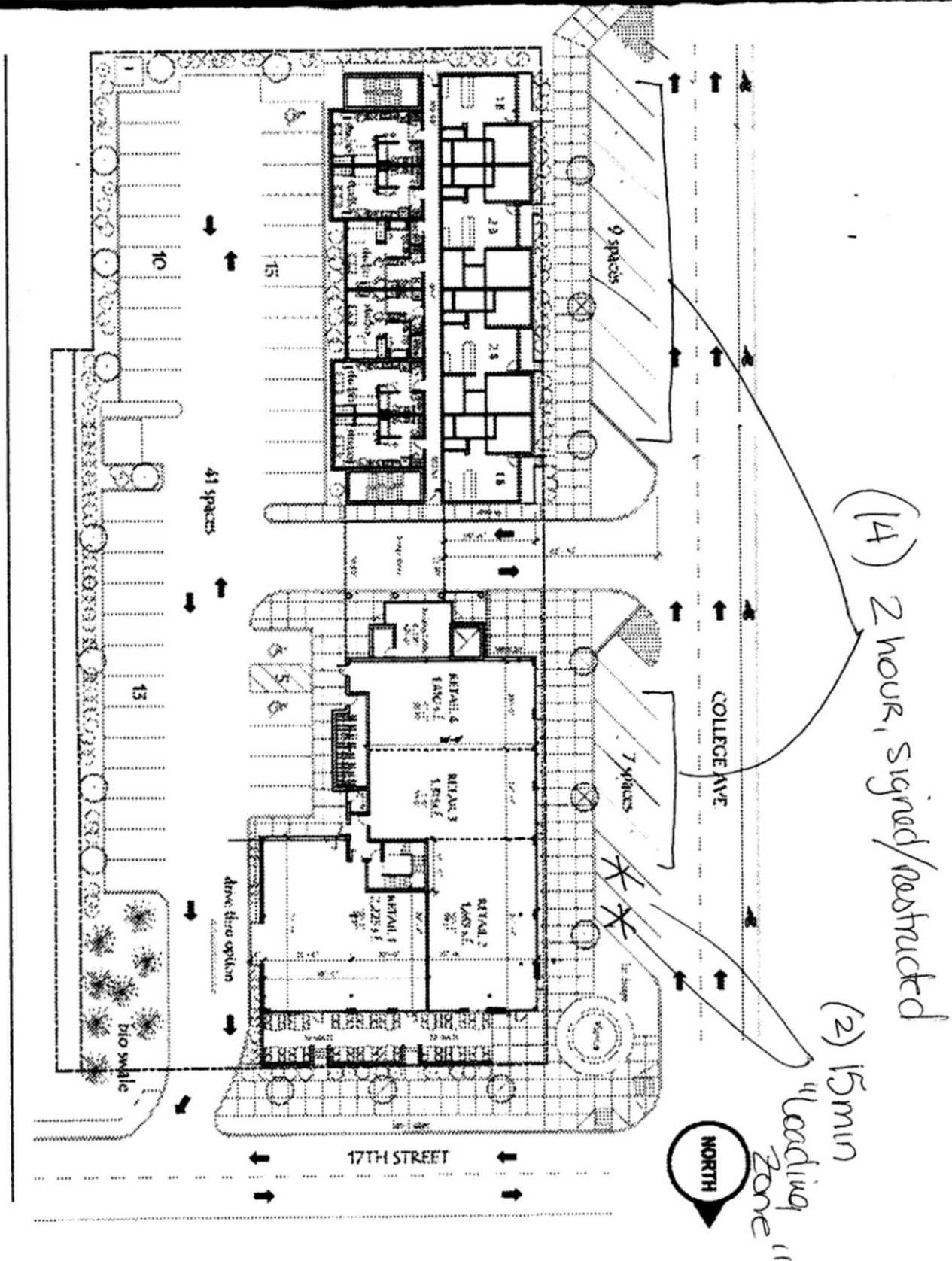


Scale: 1" = 50'

For reference only; map information NOT warranted.



Petitioner's Map: 1290-1270 N. College Ave. (Gateway Building)



COMMERCIAL SPACES

**GATEWAY**  
APARTMENTS & RETAIL

Cedarview Management  
(812) 339-8777  
info@biocominglongateway.com



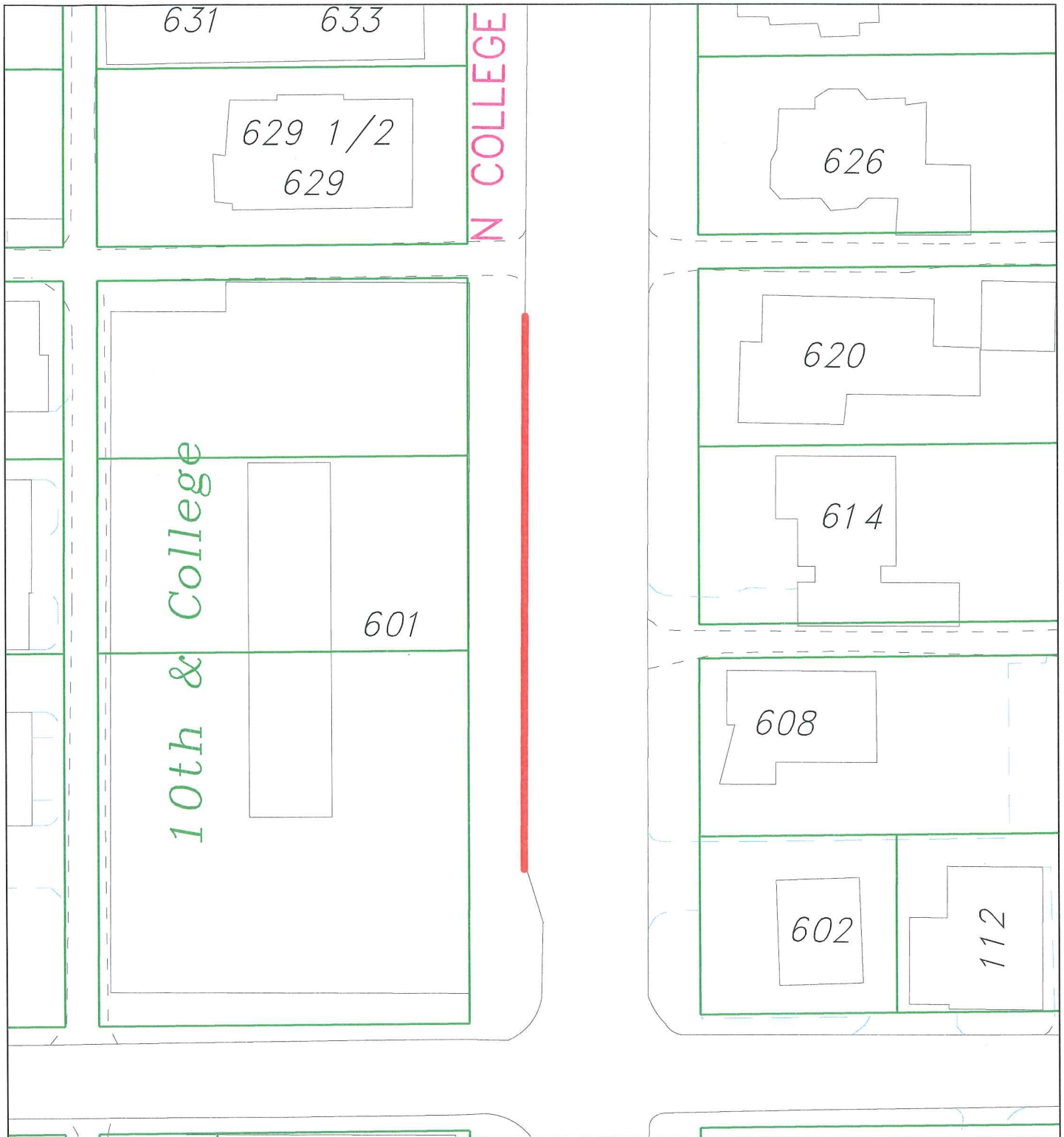


Looking north along N. College Avenue (~57') at the on-street parking spaces in front of the Gateway building. The intersection of W. 17<sup>th</sup> Street is in the left of the photo.



Looking south along N. College Avenue (~57') at the on-street parking spaces located in front of the Gateway building.



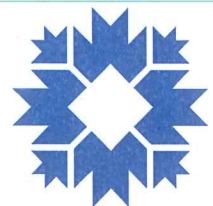


601 N. College Avenue (10th & College building)  
 Change time regulations for 1 on-street parking space.

By: nickeln  
 4 Sep 15

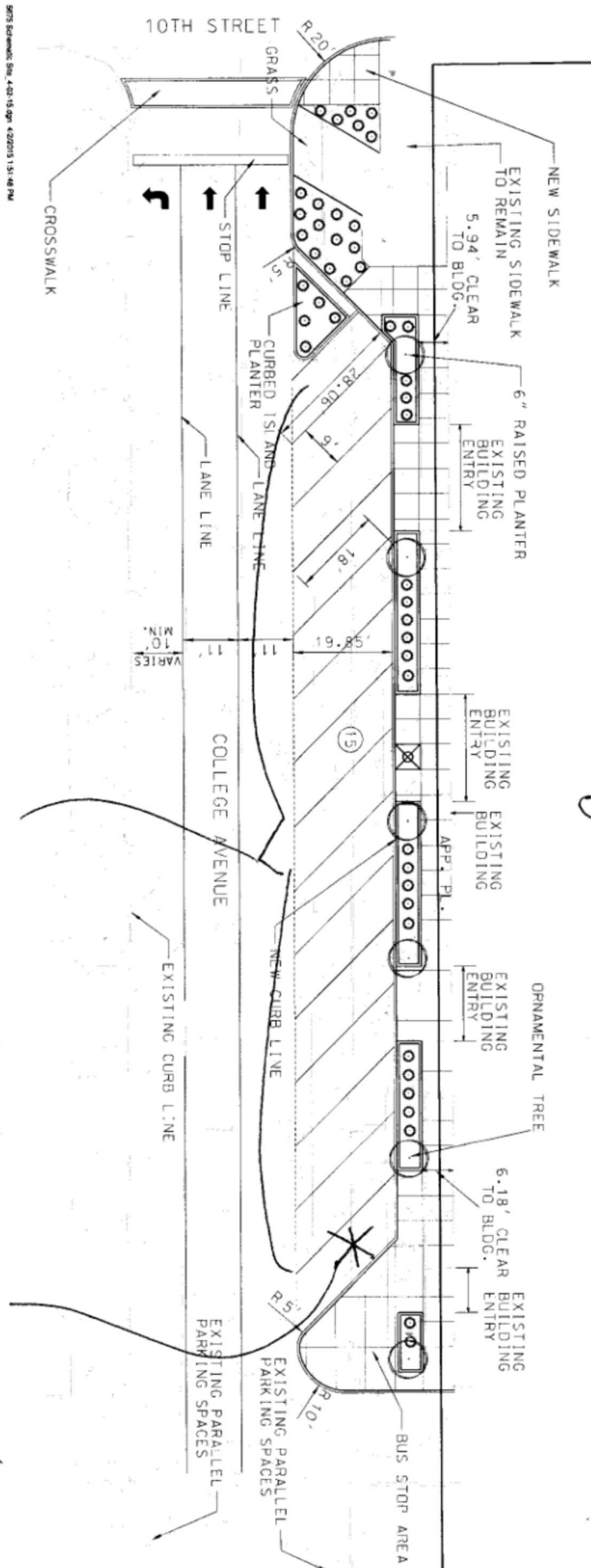


City of Bloomington  
 Planning & Transportation



Scale: 1" = 50'

For reference only; map information NOT warranted.



Tenth & College Building

2 hour, metered

15 minute metered (?)



**Petitioner's Map: 601 N. College Ave. (10th & College Building)**





Looking north at the on-street parking spaces located along N. College Avenue (~57'), in front of the 10<sup>th</sup> & College building.



Looking south at the on-street parking spaces located along N. College Avenue (~57'), in front of the 10<sup>th</sup> & College building.