

**BLOOMINGTON TRAFFIC COMMISSION
AGENDA
October 21, 2015
5:30 P.M. – COUNCIL CHAMBERS**

- I. Call to Order
- II. Approval of Minutes – September 23, 2015
- III. Public Comment
- IV. Communications from Commission
- V. Reports from Staff –
 - A. Winslow Rd. and Walnut St. Pike improvements
 - B. S. High Street traffic counts update
- VI. Old Business - none
- VII. New Business –
 - A. On-street parking - revise the current time regulations for 2 on-street parking spaces located at 1290-1270 N. College Avenue (in front of the Gateway Building) and 1 on-street parking space located at 601 N. College Avenue (in front of the 10th & College Building).
 - B. No parking zone - N. Dunn Street on the west-side of street between E. 10th Street and E. 12th Street.
- VIII. Traffic Inquiries –
 - A. Revise no-parking area to allow parking on a paved pull-off areas located at 2401 and 2408 E. 4th Street.
- IX. Adjournment

Next meeting – November 18, 2015

**City of Bloomington Traffic Commission Minutes
September 23, 2015 in the Council Chambers, City Hall**

Traffic Commission minutes are transcribed in a summarized outline manner. Audio recordings of the meeting are available in the Planning and Transportation Department for reference.

Attendance

Traffic Commission: Ron Arthur (proxy for Joe VanDeventer), James Batcho, Andrew Cibor, Ryan Cobine, Judi Maki and Scott Wickersham

Others in Attendance: Suzanne O'Connell (Cedarview Management), Ian Patton (Bloomington Transit) and Scott Robinson (Staff)

- I. Call to Order (~5:35 PM)**
- II. Approval of Minutes** – August 26, 2015. Ms. Maki motioned, and Mr. Batcho seconded, to approve the minutes. The motion passed 6-0.
- III. Communications from Commission** - none
- IV. Public Comment** - none.
- V. Reports from Staff**
 - A. Crosswalk Marking Guidance** - Mr. Robinson said staff has found several guidelines around the country to compare. Using one location as a test, staff found the Boulder, Colorado guide as a good starting point to evaluate crosswalk requests. Staff will next evaluate recent crosswalk requests using the Boulder guide. Mr. Robinson also mentioned that Title 15 amendments are being prepared to bring forward to City Council for their action. These will include recent positive recommendations by the Traffic Commission.
- VI. Old Business** - none
- VII. New Business** –
 - A. On-street parking – revise current spaces along E. 7th Street for Bloomington Transit bus stops.** Staff suggested several bus zones be established that also include moving some of the current stop locations. This will improve safety and accessibility along 7th Street. Mr. Patton said the changes are consistent with meeting the needs for Bloomington Transit. This is a busy corridor that has over 164 bus trips per school day. Commission members agreed these changes are needed and it would improve the existing conditions. Mr. Cobine motioned, and Mr. Batcho

seconded, to approve the recommendation as presented and forward to the City Council. The motion passed 6-0.

- B. On-Street parking configurations discussion:** Mr. Robinson said staff is seeking guidance on the types of on-street parking configurations supported by the Commission. No decision is needed tonight. This is important for new developments seeking to use on-street parking. City policy generally supports on-street parking but does not provide guidance on the appropriate configuration. Mr. Cibor said national trends are moving towards back-in parking and away from angled parking because it is safer. There are national guidelines that look at speed, traffic volumes, and sight distances that help with designing on-street spaces. Mr. Batcho mentioned the safety concerns with angled parking and the blind spots created when backing out into traffic. Several members expressed the need to explore back-in parking options because of the added safety benefits.

VIII. Traffic Inquiries

- A. On-street parking - revise the current time regulations for 2 on-street parking spaces located at 1290-1270 N. College Avenue (in front of the Gateway Building) and 1 on-street parking space located at 601 N. College Avenue (in front of the 10th & College Building).** Mr. Robinson provided an overview of the request and Ms. O'Connell explained the 15 minute time restriction was needed to better support the retail businesses at these locations. Mr. Cobine said the meters were installed to improve quicker turnover for parking spaces in the Downtown. Mr. Cibor said ADA parking needs also need to be considered for on-street parking. The consensus of the Commission was to have staff prepare a parking proposal for their October meeting.

IX. Adjournment (~6:35 PM)

Next meeting – October 21, 2015

City of Bloomington
Planning and Transportation Department
 401 N. Morton St., Suite 130
 Bloomington, IN 47404

Site Code: s4039
 Station ID: SN:024813
 S. High St.
 E. Rock Creek Dr. to E. Meadowbluff Ct.
 Latitude: 0' 0.0000 Undefined

Northbound

Start Time	1	16	21	26	31	36	41	46	51	56	61	66	71	76	Total	Pace Speed	Number in Pace
	15	20	25	30	35	40	45	50	55	60	65	70	75	999			
07/22/15	0	0	0	0	3	0	0	0	0	0	0	0	0	0	3	26-35	3
01:00	0	0	1	0	1	1	1	0	0	0	0	0	0	0	4	29-38	2
02:00	0	0	0	1	0	0	0	0	0	0	0	0	0	0	1	19-28	1
03:00	0	0	0	2	0	0	1	0	0	0	0	0	0	0	3	20-29	2
04:00	0	0	0	0	0	2	0	0	0	0	0	0	0	0	2	30-39	2
05:00	0	0	0	2	2	4	0	0	0	0	0	0	0	0	8	30-39	6
06:00	0	0	2	9	10	11	5	2	0	0	0	0	0	0	39	30-39	21
07:00	1	0	4	29	57	56	12	1	0	0	0	0	0	0	160	31-40	113
08:00	3	6	21	59	57	43	4	0	0	0	0	0	0	0	193	26-35	116
09:00	4	1	5	31	43	36	9	0	0	0	0	0	0	0	129	31-40	79
10:00	2	1	2	23	54	35	10	1	0	0	0	0	0	0	128	31-40	89
11:00	4	0	12	20	46	33	4	1	1	0	0	0	0	0	121	31-40	79
12 PM	9	3	7	24	62	24	9	3	1	0	0	0	0	0	142	26-35	86
13:00	2	1	11	32	40	34	4	0	0	0	0	0	0	0	124	30-39	74
14:00	0	1	4	20	39	39	8	1	0	0	0	0	0	0	112	31-40	78
15:00	2	2	2	14	36	30	7	1	0	0	0	0	0	0	94	31-40	66
16:00	0	0	4	11	54	35	7	1	0	0	0	0	0	0	112	31-40	89
17:00	2	0	4	16	43	47	8	1	0	0	0	0	0	0	121	31-40	90
18:00	4	0	4	20	44	44	14	1	0	0	0	0	0	0	131	31-40	88
19:00	0	0	2	17	25	25	6	1	0	0	0	0	0	0	76	31-40	50
20:00	0	0	2	7	31	13	0	0	0	0	0	0	0	0	53	31-40	44
21:00	3	0	1	9	25	18	1	0	1	0	0	0	0	0	58	31-40	43
22:00	0	0	3	3	14	11	1	1	0	0	0	0	0	0	33	31-40	25
23:00	0	0	2	3	8	2	4	0	0	0	0	0	0	0	19	26-35	11
Total	36	15	93	352	694	543	115	15	3	0	0	0	0	0	1866		
Percent	1.9%	0.8%	5.0%	18.9%	37.2%	29.1%	6.2%	0.8%	0.2%	0.0%	0.0%	0.0%	0.0%	0.0%			
AM Peak	09:00	08:00	08:00	08:00	07:00	07:00	07:00	06:00	11:00						08:00		
Vol.	4	6	21	59	57	56	12	2	1						193		
PM Peak	12:00	12:00	13:00	13:00	12:00	17:00	18:00	12:00	12:00						12:00		
Vol.	9	3	11	32	62	47	14	3	1						142		

City of Bloomington
Planning and Transportation Department
 401 N. Morton St., Suite 130
 Bloomington, IN 47404

Site Code: s4039
 Station ID: SN:024813
 S. High St.
 E. Rock Creek Dr. to E. Meadowbluff Ct.
 Latitude: 0' 0.0000 Undefined

Northbound

Start Time	1	16	21	26	31	36	41	46	51	56	61	66	71	76	Total	Pace Speed	Number in Pace
	15	20	25	30	35	40	45	50	55	60	65	70	75	999			
07/23/15	0	0	0	1	0	3	2	0	0	0	0	0	0	0	6	35-44	5
01:00	0	0	0	2	0	2	0	0	0	0	0	0	0	0	4	20-29	2
02:00	0	0	0	1	0	1	0	0	0	0	0	0	0	0	2	19-28	1
03:00	0	0	0	1	1	0	0	0	0	0	0	0	0	0	2	24-33	2
04:00	0	0	0	1	0	0	0	0	0	0	0	0	0	0	1	19-28	1
05:00	0	0	0	0	2	2	1	0	0	0	0	0	0	0	5	31-40	4
06:00	0	0	1	6	19	8	2	2	0	0	0	0	0	0	38	30-39	27
07:00	1	0	11	35	54	48	9	2	0	0	0	0	0	0	160	31-40	102
08:00	3	3	26	45	57	36	5	0	0	0	0	0	0	0	175	26-35	102
09:00	4	4	8	31	52	36	8	0	0	0	1	0	0	0	144	31-40	88
10:00	0	0	3	35	45	31	12	3	1	0	0	0	0	0	130	26-35	80
11:00	0	1	6	24	63	37	8	2	0	0	0	0	0	0	141	31-40	100
12 PM	2	0	8	42	51	33	6	1	0	0	0	0	0	0	143	26-35	93
13:00	4	2	5	19	44	34	7	3	0	0	0	0	0	0	118	31-40	78
14:00	1	0	5	16	58	46	5	3	0	0	0	0	0	0	134	31-40	104
15:00	4	0	0	18	42	44	7	1	0	0	0	0	0	0	116	31-40	86
16:00	4	0	6	18	38	30	10	0	1	0	0	0	0	0	107	31-40	68
17:00	4	5	26	28	58	43	11	0	0	0	0	0	0	0	175	31-40	101
18:00	2	4	11	28	44	31	6	1	0	0	0	0	0	0	127	31-40	75
19:00	0	0	5	16	31	24	9	2	1	0	0	0	0	0	88	31-40	55
20:00	1	1	4	9	21	20	3	0	0	0	0	0	0	0	59	31-40	41
21:00	0	0	5	8	18	10	2	1	0	0	0	0	0	0	44	30-39	28
22:00	0	0	1	8	6	7	2	0	0	0	0	0	0	0	24	26-35	14
23:00	0	0	0	3	5	4	1	0	0	0	0	0	0	0	13	31-40	9
Total	30	20	131	395	709	530	116	21	3	0	1	0	0	0	1956		
Percent	1.5%	1.0%	6.7%	20.2%	36.2%	27.1%	5.9%	1.1%	0.2%	0.0%	0.1%	0.0%	0.0%	0.0%			
AM Peak	09:00	09:00	08:00	08:00	11:00	07:00	10:00	10:00	10:00		09:00					08:00	
Vol.	4	4	26	45	63	48	12	3	1		1				175		
PM Peak	13:00	17:00	17:00	12:00	14:00	14:00	17:00	13:00	16:00							17:00	
Vol.	4	5	26	42	58	46	11	3	1						175		
Total	66	35	224	747	1403	1073	231	36	6	0	1	0	0	0	3822		
Percent	1.7%	0.9%	5.9%	19.5%	36.7%	28.1%	6.0%	0.9%	0.2%	0.0%	0.0%	0.0%	0.0%	0.0%			

15th Percentile : 26 MPH
 50th Percentile : 32 MPH
 85th Percentile : 38 MPH
 95th Percentile : 41 MPH

Stats
 10 MPH Pace Speed : 31-40 MPH
 Number in Pace : 2476
 Percent in Pace : 64.8%
 Number of Vehicles > 30 MPH : 2750
 Percent of Vehicles > 30 MPH : 72.0%
 Mean Speed(Average) : 33 MPH

City of Bloomington
Planning and Transportation Department
 401 N. Morton St., Suite 130
 Bloomington, IN 47404

Site Code: s4039
 Station ID: SN:024813
 S. High St.
 E. Rock Creek Dr. to E. Meadowbluff Ct.
 Latitude: 0' 0.0000 Undefined

Southbound

Start Time	1	16	21	26	31	36	41	46	51	56	61	66	71	76	Total	Pace Speed	Number in Pace
	15	20	25	30	35	40	45	50	55	60	65	70	75	999			
07/22/15	0	0	0	4	3	5	1	0	0	0	0	0	0	0	13	31-40	8
01:00	0	0	0	0	4	4	0	0	0	0	0	0	0	0	8	31-40	8
02:00	0	1	1	0	1	2	0	0	0	0	0	0	0	0	5	30-39	3
03:00	0	0	0	0	1	0	0	1	0	0	0	0	0	0	2	24-33	1
04:00	0	0	0	0	0	1	1	0	0	0	0	0	0	0	2	34-43	2
05:00	0	0	0	0	1	3	0	0	0	0	0	0	0	0	4	31-40	4
06:00	0	1	0	3	5	10	2	0	0	0	0	0	0	0	21	31-40	15
07:00	1	0	0	6	9	11	5	1	0	0	0	0	0	0	33	31-40	20
08:00	2	2	11	13	24	18	6	2	0	0	0	0	0	0	78	31-40	42
09:00	3	5	14	19	39	19	5	2	0	0	0	0	0	0	106	26-35	58
10:00	1	0	3	11	42	22	11	2	0	0	0	0	0	0	92	31-40	64
11:00	2	0	18	25	62	29	3	1	1	0	0	0	0	0	141	31-40	91
12 PM	2	4	15	46	49	22	4	0	1	0	0	0	0	0	143	26-35	95
13:00	1	2	7	21	60	30	3	0	0	0	0	0	0	0	124	31-40	90
14:00	6	1	18	24	72	38	9	1	0	0	0	0	0	0	169	31-40	110
15:00	1	0	2	28	56	44	13	0	0	0	0	0	0	0	144	31-40	100
16:00	2	1	5	37	66	67	8	0	0	0	0	0	1	0	187	31-40	133
17:00	6	4	8	28	96	67	13	0	0	0	0	0	0	0	222	31-40	163
18:00	2	0	0	27	59	53	14	2	2	0	0	0	0	0	159	31-40	112
19:00	0	0	3	23	55	37	8	2	0	0	0	0	0	0	128	31-40	92
20:00	0	0	2	17	56	36	6	0	0	0	0	0	0	0	117	31-40	92
21:00	2	1	3	8	45	18	3	2	0	0	0	0	0	0	82	31-40	63
22:00	0	1	1	5	19	15	2	1	0	0	0	0	0	0	44	31-40	34
23:00	1	0	1	3	9	10	0	0	0	0	0	0	0	0	24	31-40	19
Total	32	23	112	348	833	561	117	17	4	0	0	0	1	0	2048		
Percent	1.6%	1.1%	5.5%	17.0%	40.7%	27.4%	5.7%	0.8%	0.2%	0.0%	0.0%	0.0%	0.0%	0.0%			
AM Peak	09:00	09:00	11:00	11:00	11:00	11:00	10:00	08:00	11:00						11:00		
Vol.	3	5	18	25	62	29	11	2	1						141		
PM Peak	14:00	12:00	14:00	12:00	17:00	16:00	18:00	18:00	18:00				16:00		17:00		
Vol.	6	4	18	46	96	67	14	2	2				1		222		

City of Bloomington
Planning and Transportation Department
 401 N. Morton St., Suite 130
 Bloomington, IN 47404

Site Code: s4039
 Station ID: SN:024813
 S. High St.
 E. Rock Creek Dr. to E. Meadowbluff Ct.
 Latitude: 0' 0.000 Undefined

Southbound

Start Time	1	16	21	26	31	36	41	46	51	56	61	66	71	76	Total	Pace Speed	Number in Pace
	15	20	25	30	35	40	45	50	55	60	65	70	75	999			
07/23/15	0	0	0	1	7	3	3	0	0	0	0	0	0	0	14	30-39	10
01:00	0	0	0	2	7	2	1	0	0	0	0	0	0	0	12	31-40	9
02:00	0	0	1	1	0	2	1	0	0	0	0	0	0	0	5	36-45	3
03:00	0	0	0	1	0	2	0	0	0	1	0	0	0	0	4	29-38	2
04:00	0	0	0	0	1	0	0	0	0	0	0	0	0	0	1	24-33	1
05:00	0	0	1	1	2	3	0	0	0	0	0	0	0	0	7	30-39	5
06:00	0	0	1	1	8	3	1	0	0	0	0	0	0	0	14	31-40	11
07:00	1	1	2	10	11	7	2	1	0	0	0	0	0	0	35	26-35	21
08:00	5	0	5	25	29	12	4	0	0	0	0	0	0	0	80	26-35	54
09:00	3	4	12	16	34	21	3	0	0	0	0	0	0	0	93	31-40	55
10:00	1	0	6	15	27	17	8	3	0	0	0	0	0	0	77	31-40	44
11:00	0	0	15	25	60	31	14	0	0	0	0	0	0	0	145	31-40	91
12 PM	3	1	10	32	56	31	7	0	0	0	0	0	0	0	140	26-35	88
13:00	5	1	8	16	55	26	6	0	0	0	0	0	0	0	117	31-40	81
14:00	0	0	22	27	57	27	11	0	0	0	0	0	0	0	144	31-40	84
15:00	1	0	2	23	94	50	6	2	1	0	0	0	0	0	179	31-40	144
16:00	4	0	3	34	90	73	11	1	0	0	0	0	0	0	216	31-40	163
17:00	6	2	4	48	98	50	17	1	0	0	0	0	0	0	226	31-40	148
18:00	2	0	7	30	69	49	8	0	0	0	0	0	0	0	165	31-40	118
19:00	0	2	24	21	67	46	9	1	0	0	0	0	0	0	170	31-40	113
20:00	0	0	8	21	48	21	6	0	0	0	0	0	0	0	104	31-40	69
21:00	0	0	1	8	32	32	8	0	0	0	0	0	0	0	81	31-40	64
22:00	0	0	0	4	21	9	7	1	0	0	0	0	0	0	42	31-40	30
23:00	0	0	1	0	5	7	3	1	1	0	0	0	0	0	18	31-40	12
Total	31	11	133	362	878	524	136	11	2	1	0	0	0	0	2089		
Percent	1.5%	0.5%	6.4%	17.3%	42.0%	25.1%	6.5%	0.5%	0.1%	0.0%	0.0%	0.0%	0.0%	0.0%			
AM Peak	08:00	09:00	11:00	08:00	11:00	11:00	11:00	10:00		03:00					11:00		
Vol.	5	4	15	25	60	31	14	3		1					145		
PM Peak	17:00	17:00	19:00	17:00	17:00	16:00	17:00	15:00							17:00		
Vol.	6	2	24	48	98	73	17	2		1					226		
Total	63	34	245	710	1711	1085	253	28	6	1	0	0	1	0	4137		
Percent	1.5%	0.8%	5.9%	17.2%	41.4%	26.2%	6.1%	0.7%	0.1%	0.0%	0.0%	0.0%	0.0%	0.0%			

15th Percentile : 26 MPH
 50th Percentile : 32 MPH
 85th Percentile : 38 MPH
 95th Percentile : 41 MPH

Stats
 10 MPH Pace Speed : 31-40 MPH
 Number in Pace : 2796
 Percent in Pace : 67.6%
 Number of Vehicles > 30 MPH : 3085
 Percent of Vehicles > 30 MPH : 74.6%
 Mean Speed(Average) : 33 MPH

City of Bloomington
Planning and Transportation Department
 401 N. Morton St., Suite 130
 Bloomington, IN 47404

Site Code: s4039
 Station ID: SN:024813
 S. High St.
 E. Rock Creek Dr. to E. Meadowbluff Ct.
 Latitude: 0' 0.000 Undefined

Northbound, Southbound

Start Time	1	16	21	26	31	36	41	46	51	56	61	66	71	76	Total	Pace Speed	Number in Pace
07/22/15	0	0	0	4	6	5	1	0	0	0	0	0	0	0	16	31-40	11
01:00	0	0	1	0	5	5	1	0	0	0	0	0	0	0	12	31-40	10
02:00	0	1	1	1	1	2	0	0	0	0	0	0	0	0	6	29-38	3
03:00	0	0	0	2	1	0	1	1	0	0	0	0	0	0	5	26-35	3
04:00	0	0	0	0	0	3	1	0	0	0	0	0	0	0	4	34-43	4
05:00	0	0	0	2	3	7	0	0	0	0	0	0	0	0	12	31-40	10
06:00	0	1	2	12	15	21	7	2	0	0	0	0	0	0	60	31-40	36
07:00	2	0	4	35	66	67	17	2	0	0	0	0	0	0	193	31-40	133
08:00	5	8	32	72	81	61	10	2	0	0	0	0	0	0	271	26-35	153
09:00	7	6	19	50	82	55	14	2	0	0	0	0	0	0	235	31-40	137
10:00	3	1	5	34	96	57	21	3	0	0	0	0	0	0	220	31-40	153
11:00	6	0	30	45	108	62	7	2	2	0	0	0	0	0	262	31-40	170
12 PM	11	7	22	70	111	46	13	3	2	0	0	0	0	0	285	26-35	181
13:00	3	3	18	53	100	64	7	0	0	0	0	0	0	0	248	31-40	164
14:00	6	2	22	44	111	77	17	2	0	0	0	0	0	0	281	31-40	188
15:00	3	2	4	42	92	74	20	1	0	0	0	0	0	0	238	31-40	166
16:00	2	1	9	48	120	102	15	1	0	0	0	0	1	0	299	31-40	222
17:00	8	4	12	44	139	114	21	1	0	0	0	0	0	0	343	31-40	253
18:00	6	0	4	47	103	97	28	3	2	0	0	0	0	0	290	31-40	200
19:00	0	0	5	40	80	62	14	3	0	0	0	0	0	0	204	31-40	142
20:00	0	0	4	24	87	49	6	0	0	0	0	0	0	0	170	31-40	136
21:00	5	1	4	17	70	36	4	2	1	0	0	0	0	0	140	31-40	106
22:00	0	1	4	8	33	26	3	2	0	0	0	0	0	0	77	31-40	59
23:00	1	0	3	6	17	12	4	0	0	0	0	0	0	0	43	31-40	29
Total	68	38	205	700	1527	1104	232	32	7	0	0	0	1	0	3914		
Percent	1.7%	1.0%	5.2%	17.9%	39.0%	28.2%	5.9%	0.8%	0.2%	0.0%	0.0%	0.0%	0.0%	0.0%			
AM Peak	09:00	08:00	08:00	08:00	11:00	07:00	10:00	10:00	11:00						08:00		
Vol.	7	8	32	72	108	67	21	3	2						271		
PM Peak	12:00	12:00	12:00	12:00	17:00	17:00	18:00	12:00	12:00				16:00		17:00		
Vol.	11	7	22	70	139	114	28	3	2				1		343		

City of Bloomington
Planning and Transportation Department
 401 N. Morton St., Suite 130
 Bloomington, IN 47404

Site Code: s4039
 Station ID: SN:024813
 S. High St.
 E. Rock Creek Dr. to E. Meadowbluff Ct.
 Latitude: 0' 0.000 Undefined

Northbound, Southbound

Start Time	1	16	21	26	31	36	41	46	51	56	61	66	71	76	Total	Pace Speed	Number in Pace
	15	20	25	30	35	40	45	50	55	60	65	70	75	999			
07/23/15	0	0	0	2	7	6	5	0	0	0	0	0	0	0	20	31-40	13
01:00	0	0	0	4	7	4	1	0	0	0	0	0	0	0	16	31-40	11
02:00	0	0	1	2	0	3	1	0	0	0	0	0	0	0	7	36-45	4
03:00	0	0	0	2	1	2	0	0	0	1	0	0	0	0	6	31-40	3
04:00	0	0	0	1	1	0	0	0	0	0	0	0	0	0	2	24-33	2
05:00	0	0	1	1	4	5	1	0	0	0	0	0	0	0	12	31-40	9
06:00	0	0	2	7	27	11	3	2	0	0	0	0	0	0	52	31-40	38
07:00	2	1	13	45	65	55	11	3	0	0	0	0	0	0	195	31-40	120
08:00	8	3	31	70	86	48	9	0	0	0	0	0	0	0	255	26-35	156
09:00	7	8	20	47	86	57	11	0	0	0	1	0	0	0	237	31-40	143
10:00	1	0	9	50	72	48	20	6	1	0	0	0	0	0	207	26-35	122
11:00	0	1	21	49	123	68	22	2	0	0	0	0	0	0	286	31-40	191
12 PM	5	1	18	74	107	64	13	1	0	0	0	0	0	0	283	26-35	181
13:00	9	3	13	35	99	60	13	3	0	0	0	0	0	0	235	31-40	159
14:00	1	0	27	43	115	73	16	3	0	0	0	0	0	0	278	31-40	188
15:00	5	0	2	41	136	94	13	3	1	0	0	0	0	0	295	31-40	230
16:00	8	0	9	52	128	103	21	1	1	0	0	0	0	0	323	31-40	231
17:00	10	7	30	76	156	93	28	1	0	0	0	0	0	0	401	31-40	249
18:00	4	4	18	58	113	80	14	1	0	0	0	0	0	0	292	31-40	193
19:00	0	2	29	37	98	70	18	3	1	0	0	0	0	0	258	31-40	168
20:00	1	1	12	30	69	41	9	0	0	0	0	0	0	0	163	31-40	110
21:00	0	0	6	16	50	42	10	1	0	0	0	0	0	0	125	31-40	92
22:00	0	0	1	12	27	16	9	1	0	0	0	0	0	0	66	31-40	43
23:00	0	0	1	3	10	11	4	1	1	0	0	0	0	0	31	31-40	21
Total	61	31	264	757	1587	1054	252	32	5	1	1	0	0	0	4045		
Percent	1.5%	0.8%	6.5%	18.7%	39.2%	26.1%	6.2%	0.8%	0.1%	0.0%	0.0%	0.0%	0.0%	0.0%			
AM Peak	08:00	09:00	08:00	08:00	11:00	11:00	11:00	10:00	10:00	03:00	09:00				11:00		
Vol.	8	8	31	70	123	68	22	6	1	1	1				286		
PM Peak	17:00	17:00	17:00	17:00	17:00	16:00	17:00	13:00	15:00						17:00		
Vol.	10	7	30	76	156	103	28	3	1						401		
Total	129	69	469	1457	3114	2158	484	64	12	1	1	0	1	0	7959		
Percent	1.6%	0.9%	5.9%	18.3%	39.1%	27.1%	6.1%	0.8%	0.2%	0.0%	0.0%	0.0%	0.0%	0.0%			

15th Percentile : 26 MPH
 50th Percentile : 32 MPH
 85th Percentile : 38 MPH
 95th Percentile : 41 MPH

Stats
 10 MPH Pace Speed : 31-40 MPH
 Number in Pace : 5272
 Percent in Pace : 66.2%
 Number of Vehicles > 30 MPH : 5835
 Percent of Vehicles > 30 MPH : 73.3%
 Mean Speed(Average) : 33 MPH

City of Bloomington
Planning and Transportation Department
 401 N. Morton St., Suite 130
 Bloomington, IN 47404

Site Code: s4039
 Station ID: SN:024811
 S. High St.
 E. Rock Creek Dr. to E. Meadowbluff Ct.
 Latitude: 0' 0.0000 Undefined

Northbound

Start Time	1	16	21	26	31	36	41	46	51	56	61	66	71	76	Total	Pace Speed	Number in Pace
09/23/15	0	0	1	1	1	1	0	0	0	0	0	0	0	0	4	19-28	2
01:00	0	0	0	1	0	0	0	0	0	0	0	0	0	0	1	19-28	1
02:00	0	0	0	0	0	0	0	0	0	0	0	0	0	0	0	*	*
03:00	0	0	0	0	1	0	0	0	0	0	0	0	0	0	1	24-33	1
04:00	0	0	0	1	2	0	0	0	0	0	0	0	0	0	3	25-34	3
05:00	0	0	0	1	5	3	1	0	0	0	0	0	0	0	10	30-39	8
06:00	0	0	1	12	17	8	1	1	0	0	0	0	0	0	40	26-35	29
07:00	3	0	11	90	104	24	3	0	0	0	0	0	0	0	235	26-35	194
08:00	1	2	22	94	85	19	1	0	0	0	0	0	0	0	224	26-35	179
09:00	10	13	49	87	31	12	0	0	0	0	0	0	0	0	202	21-30	136
10:00	2	0	9	26	59	23	4	0	1	0	0	0	0	0	124	26-35	85
11:00	2	0	11	37	47	16	3	0	0	0	0	0	0	0	116	26-35	84
12 PM	3	0	12	31	58	26	2	1	0	0	0	0	0	0	133	26-35	89
13:00	5	0	7	34	36	32	2	0	0	0	0	0	0	0	116	26-35	70
14:00	1	0	4	20	48	24	6	0	0	0	0	0	0	0	103	31-40	72
15:00	2	8	38	44	49	8	0	0	0	0	0	0	0	0	149	26-35	93
16:00	5	2	11	36	61	17	3	0	0	0	0	0	0	0	135	26-35	97
17:00	2	3	14	31	64	26	5	0	0	0	0	0	0	0	145	26-35	95
18:00	5	1	16	43	63	28	4	0	1	0	0	0	0	0	161	26-35	106
19:00	1	0	8	37	36	14	2	0	0	0	0	0	0	0	98	26-35	73
20:00	0	0	2	16	33	13	0	0	0	0	0	0	0	0	64	26-35	49
21:00	0	0	0	13	17	13	1	0	0	0	0	0	0	0	44	31-40	30
22:00	0	0	0	6	10	4	0	1	0	0	0	0	0	0	21	26-35	16
23:00	0	0	1	1	1	1	0	0	0	0	0	0	0	0	4	19-28	2
Total	42	29	217	662	828	312	38	3	2	0	0	0	0	0	2133		
Percent	2.0%	1.4%	10.2%	31.0%	38.8%	14.6%	1.8%	0.1%	0.1%	0.0%	0.0%	0.0%	0.0%	0.0%			
AM Peak	09:00	09:00	09:00	08:00	07:00	07:00	10:00	06:00	10:00						07:00		
Vol.	10	13	49	94	104	24	4	1	1						235		
PM Peak	13:00	15:00	15:00	15:00	17:00	13:00	14:00	12:00	18:00						18:00		
Vol.	5	8	38	44	64	32	6	1	1						161		

City of Bloomington
Planning and Transportation Department
 401 N. Morton St., Suite 130
 Bloomington, IN 47404

Site Code: s4039
 Station ID: SN:024811
 S. High St.
 E. Rock Creek Dr. to E. Meadowbluff Ct.
 Latitude: 0' 0.0000 Undefined

Northbound

Start Time	1	16	21	26	31	36	41	46	51	56	61	66	71	76	Total	Pace Speed	Number in Pace
	15	20	25	30	35	40	45	50	55	60	65	70	75	999			
09/24/15	0	0	2	1	1	1	0	0	0	0	0	0	0	0	5	21-30	3
01:00	0	0	0	0	3	0	0	0	0	0	0	0	0	0	3	26-35	3
02:00	0	0	0	0	1	1	0	0	0	0	0	0	0	0	2	29-38	2
03:00	0	0	0	1	2	0	0	0	0	0	0	0	0	0	3	25-34	3
04:00	0	0	0	1	1	2	0	0	0	0	0	0	0	0	4	29-38	3
05:00	1	0	1	2	1	1	0	0	0	0	0	0	0	0	6	26-35	3
06:00	0	0	3	20	15	8	0	0	0	0	0	0	0	0	46	26-35	35
07:00	1	1	16	90	92	28	0	0	0	0	0	0	0	0	228	26-35	182
08:00	7	23	96	77	56	14	1	0	0	0	0	0	0	0	274	21-30	173
09:00	2	2	9	37	53	19	5	1	0	0	0	0	0	0	128	26-35	90
10:00	0	2	3	36	60	18	6	0	0	0	0	0	0	0	125	26-35	96
11:00	1	4	11	26	39	21	2	1	0	0	0	0	0	0	105	26-35	65
12 PM	2	0	11	34	64	21	2	1	0	0	0	0	0	0	135	26-35	98
13:00	2	0	5	30	48	22	2	0	0	0	0	0	0	0	109	26-35	78
14:00	2	0	3	26	51	22	6	0	0	0	0	0	0	0	110	26-35	77
15:00	0	6	36	36	47	14	1	0	0	0	0	0	0	0	140	26-35	83
16:00	4	2	10	33	68	15	3	0	0	0	0	0	0	0	135	26-35	101
17:00	4	0	10	30	66	36	2	0	0	0	0	0	0	0	148	31-40	102
18:00	1	2	7	45	49	16	2	0	0	0	0	0	0	0	122	26-35	94
19:00	1	1	9	29	41	11	0	0	0	0	0	0	0	0	92	26-35	70
20:00	1	0	8	21	25	13	0	0	0	0	0	0	0	0	68	26-35	46
21:00	0	0	1	11	23	9	1	0	0	0	0	0	0	0	45	26-35	34
22:00	0	0	1	7	10	4	1	0	0	0	0	0	0	0	23	26-35	17
23:00	0	0	0	1	4	1	0	0	0	0	0	0	0	0	6	28-37	5
Total	29	43	242	594	820	297	34	3	0	0	0	0	0	0	2062		
Percent	1.4%	2.1%	11.7%	28.8%	39.8%	14.4%	1.6%	0.1%	0.0%	0.0%	0.0%	0.0%	0.0%	0.0%			
AM Peak	08:00	08:00	08:00	07:00	07:00	07:00	10:00	09:00							08:00		
Vol.	7	23	96	90	92	28	6	1							274		
PM Peak	16:00	15:00	15:00	18:00	16:00	17:00	14:00	12:00							17:00		
Vol.	4	6	36	45	68	36	6	1							148		
Total	71	72	459	1256	1648	609	72	6	2	0	0	0	0	0	4195		
Percent	1.7%	1.7%	10.9%	29.9%	39.3%	14.5%	1.7%	0.1%	0.0%	0.0%	0.0%	0.0%	0.0%	0.0%			

15th Percentile : 25 MPH
 50th Percentile : 30 MPH
 85th Percentile : 35 MPH
 95th Percentile : 38 MPH

Stats
 10 MPH Pace Speed : 26-35 MPH
 Number in Pace : 2904
 Percent in Pace : 69.2%
 Number of Vehicles > 30 MPH : 2337
 Percent of Vehicles > 30 MPH : 55.7%
 Mean Speed(Average) : 31 MPH

City of Bloomington
Planning and Transportation Department
 401 N. Morton St., Suite 130
 Bloomington, IN 47404

Site Code: s4039
 Station ID: SN:024811
 S. High St.
 E. Rock Creek Dr. to E. Meadowbluff Ct.
 Latitude: 0' 0.0000 Undefined

Southbound

Start Time	1	16	21	26	31	36	41	46	51	56	61	66	71	76	Total	Pace Speed	Number in Pace
	15	20	25	30	35	40	45	50	55	60	65	70	75	999			
09/23/15	0	0	0	1	3	7	0	0	0	0	0	0	0	0	11	31-40	10
01:00	0	0	0	0	0	1	1	0	0	0	0	0	0	0	2	34-43	2
02:00	0	0	0	1	1	1	0	0	0	0	0	0	0	0	3	24-33	2
03:00	0	0	0	0	1	0	2	0	0	0	0	0	0	0	3	34-43	2
04:00	0	0	0	0	0	1	0	1	0	0	0	0	0	0	2	29-38	1
05:00	0	0	0	1	1	5	2	0	0	0	0	0	0	0	9	36-45	7
06:00	0	0	0	0	8	7	0	3	2	0	0	0	0	0	20	31-40	15
07:00	6	0	1	16	27	15	4	1	0	0	0	0	0	0	70	26-35	43
08:00	3	1	16	27	48	19	3	4	1	0	0	0	0	0	122	26-35	75
09:00	7	8	17	34	35	17	4	2	0	0	0	0	0	0	124	26-35	69
10:00	2	1	6	10	22	14	7	1	0	0	0	0	0	0	63	31-40	36
11:00	3	0	11	35	39	20	10	3	0	0	0	0	0	0	121	26-35	74
12 PM	5	0	8	22	42	35	13	3	1	0	0	0	0	0	129	31-40	77
13:00	3	1	7	26	45	30	3	2	1	0	0	0	0	0	118	31-40	75
14:00	0	3	6	23	61	25	8	4	1	1	0	0	0	0	132	31-40	86
15:00	7	7	27	37	54	30	6	1	0	0	0	0	0	0	169	26-35	91
16:00	6	0	20	44	108	53	15	1	0	1	0	0	0	0	248	31-40	161
17:00	4	0	15	48	114	97	17	2	1	0	0	0	0	0	298	31-40	211
18:00	5	3	9	33	67	70	11	6	1	0	0	0	0	0	205	31-40	137
19:00	1	0	3	20	58	48	13	1	1	0	0	0	0	0	145	31-40	106
20:00	6	0	6	27	56	55	7	0	0	0	0	0	0	0	157	31-40	111
21:00	0	0	1	6	26	29	2	1	0	0	0	0	0	0	65	31-40	55
22:00	0	0	0	7	13	12	8	0	0	0	0	0	0	0	40	31-40	25
23:00	0	0	1	2	7	8	1	0	0	0	0	0	0	0	19	31-40	15
Total	58	24	154	420	836	599	137	36	9	2	0	0	0	0	2275		
Percent	2.5%	1.1%	6.8%	18.5%	36.7%	26.3%	6.0%	1.6%	0.4%	0.1%	0.0%	0.0%	0.0%	0.0%			
AM Peak	09:00	09:00	09:00	11:00	08:00	11:00	11:00	08:00	06:00						09:00		
Vol.	7	8	17	35	48	20	10	4	2						124		
PM Peak	15:00	15:00	15:00	17:00	17:00	17:00	17:00	18:00	12:00	14:00					17:00		
Vol.	7	7	27	48	114	97	17	6	1	1					298		

City of Bloomington
Planning and Transportation Department
 401 N. Morton St., Suite 130
 Bloomington, IN 47404

Site Code: s4039
 Station ID: SN:024811
 S. High St.
 E. Rock Creek Dr. to E. Meadowbluff Ct.
 Latitude: 0' 0.000 Undefined

Southbound

Start Time	1	16	21	26	31	36	41	46	51	56	61	66	71	76	Total	Pace Speed	Number in Pace
	15	20	25	30	35	40	45	50	55	60	65	70	75	999			
09/24/15	0	0	0	1	1	4	2	0	0	0	0	0	0	0	8	34-43	6
01:00	0	0	0	1	1	0	0	0	0	0	0	0	0	0	2	24-33	2
02:00	0	0	0	2	2	0	0	0	0	0	0	0	0	0	4	25-34	4
03:00	0	0	0	0	2	1	0	0	0	0	0	0	0	0	3	29-38	3
04:00	0	0	0	0	0	1	0	1	0	0	0	0	0	0	2	29-38	1
05:00	1	0	1	0	2	3	1	2	0	0	0	0	0	0	10	31-40	5
06:00	1	0	1	2	12	7	3	0	0	0	0	0	0	0	26	31-40	19
07:00	4	0	3	16	42	13	3	0	0	0	0	0	0	0	81	26-35	58
08:00	6	21	35	31	19	8	1	0	0	0	0	0	0	0	121	21-30	66
09:00	4	1	8	16	27	19	0	1	1	0	0	0	0	0	77	31-40	46
10:00	0	0	6	14	28	14	3	1	2	0	0	0	0	0	68	31-40	42
11:00	0	1	15	16	28	28	3	6	0	0	0	0	0	0	97	31-40	56
12 PM	3	1	4	19	39	41	10	5	2	0	0	0	0	0	124	31-40	80
13:00	4	0	9	24	29	25	9	2	1	0	0	0	0	0	103	29-38	54
14:00	4	2	3	25	58	38	9	5	0	1	0	0	0	0	145	31-40	96
15:00	8	12	26	54	40	33	9	4	1	0	0	0	0	0	187	26-35	94
16:00	4	2	23	37	80	66	16	4	2	0	0	0	0	0	234	31-40	146
17:00	6	1	15	49	115	84	11	1	1	0	0	0	0	0	283	31-40	199
18:00	3	1	5	28	47	56	9	2	1	0	0	0	0	0	152	31-40	103
19:00	1	0	8	20	58	44	14	0	0	0	0	0	0	0	145	31-40	102
20:00	2	0	7	16	44	54	8	2	0	0	0	0	0	0	133	31-40	98
21:00	0	0	1	6	26	37	11	2	1	0	0	0	0	0	84	31-40	63
22:00	0	0	2	2	17	18	5	1	0	0	0	0	0	0	45	31-40	35
23:00	0	0	1	2	10	4	4	1	0	0	0	0	0	0	22	31-40	14
Total	51	42	173	381	727	598	131	40	12	1	0	0	0	0	2156		
Percent	2.4%	1.9%	8.0%	17.7%	33.7%	27.7%	6.1%	1.9%	0.6%	0.0%	0.0%	0.0%	0.0%	0.0%			
AM Peak	08:00	08:00	08:00	08:00	07:00	11:00	06:00	11:00	10:00						08:00		
Vol.	6	21	35	31	42	28	3	6	2						121		
PM Peak	15:00	15:00	15:00	15:00	17:00	17:00	16:00	12:00	12:00	14:00					17:00		
Vol.	8	12	26	54	115	84	16	5	2	1					283		
Total	109	66	327	801	1563	1197	268	76	21	3	0	0	0	0	4431		
Percent	2.5%	1.5%	7.4%	18.1%	35.3%	27.0%	6.0%	1.7%	0.5%	0.1%	0.0%	0.0%	0.0%	0.0%			

15th Percentile : 26 MPH
 50th Percentile : 32 MPH
 85th Percentile : 38 MPH
 95th Percentile : 42 MPH

Stats
 10 MPH Pace Speed : 31-40 MPH
 Number in Pace : 2760
 Percent in Pace : 62.3%
 Number of Vehicles > 30 MPH : 3128
 Percent of Vehicles > 30 MPH : 70.6%
 Mean Speed(Average) : 33 MPH

City of Bloomington
Planning and Transportation Department
 401 N. Morton St., Suite 130
 Bloomington, IN 47404

Site Code: s4039
 Station ID: SN:024811
 S. High St.
 E. Rock Creek Dr. to E. Meadowbluff Ct.
 Latitude: 0' 0.000 Undefined

Northbound, Southbound

Start Time	1	16	21	26	31	36	41	46	51	56	61	66	71	76	Total	Pace Speed	Number in Pace
09/23/15	0	0	1	2	4	8	0	0	0	0	0	0	0	0	15	31-40	12
01:00	0	0	0	1	0	1	1	0	0	0	0	0	0	0	3	34-43	2
02:00	0	0	0	1	1	1	0	0	0	0	0	0	0	0	3	24-33	2
03:00	0	0	0	0	2	0	2	0	0	0	0	0	0	0	4	25-34	2
04:00	0	0	0	1	2	1	0	1	0	0	0	0	0	0	5	31-40	3
05:00	0	0	0	2	6	8	3	0	0	0	0	0	0	0	19	31-40	14
06:00	0	0	1	12	25	15	1	4	2	0	0	0	0	0	60	31-40	40
07:00	9	0	12	106	131	39	7	1	0	0	0	0	0	0	305	26-35	237
08:00	4	3	38	121	133	38	4	4	1	0	0	0	0	0	346	26-35	254
09:00	17	21	66	121	66	29	4	2	0	0	0	0	0	0	326	26-35	187
10:00	4	1	15	36	81	37	11	1	1	0	0	0	0	0	187	31-40	118
11:00	5	0	22	72	86	36	13	3	0	0	0	0	0	0	237	26-35	158
12 PM	8	0	20	53	100	61	15	4	1	0	0	0	0	0	262	31-40	161
13:00	8	1	14	60	81	62	5	2	1	0	0	0	0	0	234	31-40	143
14:00	1	3	10	43	109	49	14	4	1	1	0	0	0	0	235	31-40	158
15:00	9	15	65	81	103	38	6	1	0	0	0	0	0	0	318	26-35	184
16:00	11	2	31	80	169	70	18	1	0	1	0	0	0	0	383	26-35	249
17:00	6	3	29	79	178	123	22	2	1	0	0	0	0	0	443	31-40	301
18:00	10	4	25	76	130	98	15	6	2	0	0	0	0	0	366	31-40	228
19:00	2	0	11	57	94	62	15	1	1	0	0	0	0	0	243	31-40	156
20:00	6	0	8	43	89	68	7	0	0	0	0	0	0	0	221	31-40	157
21:00	0	0	1	19	43	42	3	1	0	0	0	0	0	0	109	31-40	85
22:00	0	0	0	13	23	16	8	1	0	0	0	0	0	0	61	31-40	39
23:00	0	0	2	3	8	9	1	0	0	0	0	0	0	0	23	31-40	17
Total	100	53	371	1082	1664	911	175	39	11	2	0	0	0	0	4408		
Percent	2.3%	1.2%	8.4%	24.5%	37.7%	20.7%	4.0%	0.9%	0.2%	0.0%	0.0%	0.0%	0.0%	0.0%			
AM Peak	09:00	09:00	09:00	08:00	08:00	07:00	11:00	06:00	06:00						08:00		
Vol.	17	21	66	121	133	39	13	4	2						346		
PM Peak	16:00	15:00	15:00	15:00	17:00	17:00	17:00	18:00	18:00	14:00					17:00		
Vol.	11	15	65	81	178	123	22	6	2	1					443		

City of Bloomington
Planning and Transportation Department
 401 N. Morton St., Suite 130
 Bloomington, IN 47404

Site Code: s4039
 Station ID: SN:024811
 S. High St.
 E. Rock Creek Dr. to E. Meadowbluff Ct.
 Latitude: 0' 0.0000 Undefined

Northbound, Southbound

Start Time	1	16	21	26	31	36	41	46	51	56	61	66	71	76	Total	Pace Speed	Number in Pace
	15	20	25	30	35	40	45	50	55	60	65	70	75	999			
09/24/15	0	0	2	2	2	5	2	0	0	0	0	0	0	0	13	36-45	7
01:00	0	0	0	1	4	0	0	0	0	0	0	0	0	0	5	26-35	5
02:00	0	0	0	2	3	1	0	0	0	0	0	0	0	0	6	26-35	5
03:00	0	0	0	1	4	1	0	0	0	0	0	0	0	0	6	28-37	5
04:00	0	0	0	1	1	3	0	1	0	0	0	0	0	0	6	31-40	4
05:00	2	0	2	2	3	4	1	2	0	0	0	0	0	0	16	31-40	7
06:00	1	0	4	22	27	15	3	0	0	0	0	0	0	0	72	26-35	49
07:00	5	1	19	106	134	41	3	0	0	0	0	0	0	0	309	26-35	240
08:00	13	44	131	108	75	22	2	0	0	0	0	0	0	0	395	21-30	239
09:00	6	3	17	53	80	38	5	2	1	0	0	0	0	0	205	26-35	133
10:00	0	2	9	50	88	32	9	1	2	0	0	0	0	0	193	26-35	138
11:00	1	5	26	42	67	49	5	7	0	0	0	0	0	0	202	31-40	116
12 PM	5	1	15	53	103	62	12	6	2	0	0	0	0	0	259	31-40	165
13:00	6	0	14	54	77	47	11	2	1	0	0	0	0	0	212	26-35	131
14:00	6	2	6	51	109	60	15	5	0	1	0	0	0	0	255	31-40	169
15:00	8	18	62	90	87	47	10	4	1	0	0	0	0	0	327	26-35	177
16:00	8	4	33	70	148	81	19	4	2	0	0	0	0	0	369	31-40	229
17:00	10	1	25	79	181	120	13	1	1	0	0	0	0	0	431	31-40	301
18:00	4	3	12	73	96	72	11	2	1	0	0	0	0	0	274	26-35	169
19:00	2	1	17	49	99	55	14	0	0	0	0	0	0	0	237	31-40	154
20:00	3	0	15	37	69	67	8	2	0	0	0	0	0	0	201	31-40	136
21:00	0	0	2	17	49	46	12	2	1	0	0	0	0	0	129	31-40	95
22:00	0	0	3	9	27	22	6	1	0	0	0	0	0	0	68	31-40	49
23:00	0	0	1	3	14	5	4	1	0	0	0	0	0	0	28	30-39	19
Total	80	85	415	975	1547	895	165	43	12	1	0	0	0	0	4218		
Percent	1.9%	2.0%	9.8%	23.1%	36.7%	21.2%	3.9%	1.0%	0.3%	0.0%	0.0%	0.0%	0.0%	0.0%			
AM Peak	08:00	08:00	08:00	08:00	07:00	11:00	10:00	11:00	10:00						08:00		
Vol.	13	44	131	108	134	49	9	7	2						395		
PM Peak	17:00	15:00	15:00	15:00	17:00	17:00	16:00	12:00	12:00	14:00					17:00		
Vol.	10	18	62	90	181	120	19	6	2	1					431		
Total	180	138	786	2057	3211	1806	340	82	23	3	0	0	0	0	8626		
Percent	2.1%	1.6%	9.1%	23.8%	37.2%	20.9%	3.9%	1.0%	0.3%	0.0%	0.0%	0.0%	0.0%	0.0%			

15th Percentile : 25 MPH
 50th Percentile : 31 MPH
 85th Percentile : 37 MPH
 95th Percentile : 40 MPH

Stats
 10 MPH Pace Speed : 26-35 MPH
 Number in Pace : 5268
 Percent in Pace : 61.1%
 Number of Vehicles > 30 MPH : 5465
 Percent of Vehicles > 30 MPH : 63.4%
 Mean Speed(Average) : 32 MPH



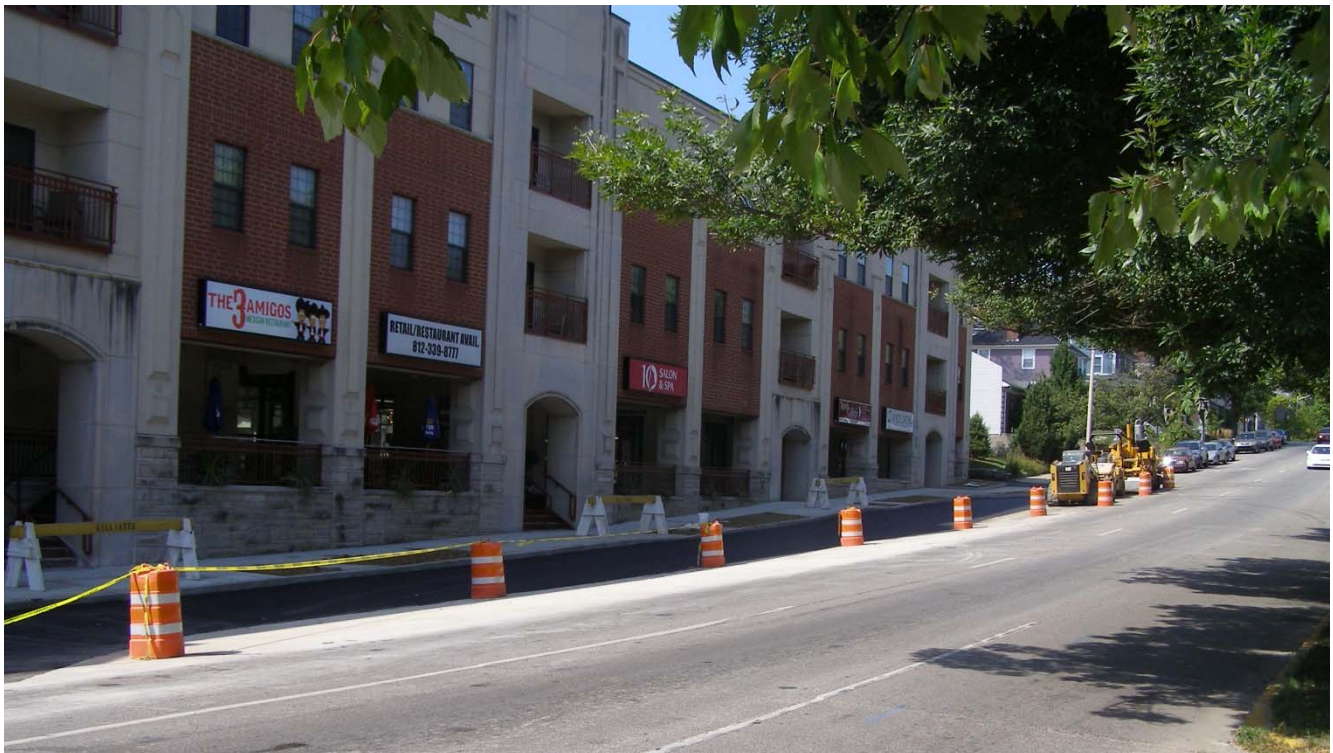
MEMORANDUM

To: Traffic Commission
From: Scott Robinson, Planning Services Manager
Date: October 21, 2015
Re: On-street parking modifications for 601 and 1290 North College Avenue

Background

A traffic inquiry by Cedarview Management was discussed at the September 23, 2015 Traffic Commission meeting regarding on-street parking time regulations. The request was to consider changing the time regulations for several parking spaces to 15 minutes to allow for pick-up and carry out purposes at 601 N. College Avenue and 1290 N. College Avenue. The consensus of the Traffic Commission was to move forward with this request.

Currently at 601 N. College Avenue, also known as 10th and College, there are 15 metered on-street angled parking spaces. One space, the most northern spot, is identified as a desirable location for a 15 minute parking space to allow for pickup and carry out purposes. Additionally, at 1290 N. College Avenue, known as the Gateway, there are 16 on-street, 2-hour angled parking spaces. Two spaces, the most northern spots, are identified as desirable locations for 15 minute parking spaces to also allow for pickup and carry out purposes. Respective site schematics are included in the packet for reference.



10th and College on-street parking – one 15 minute parking space.



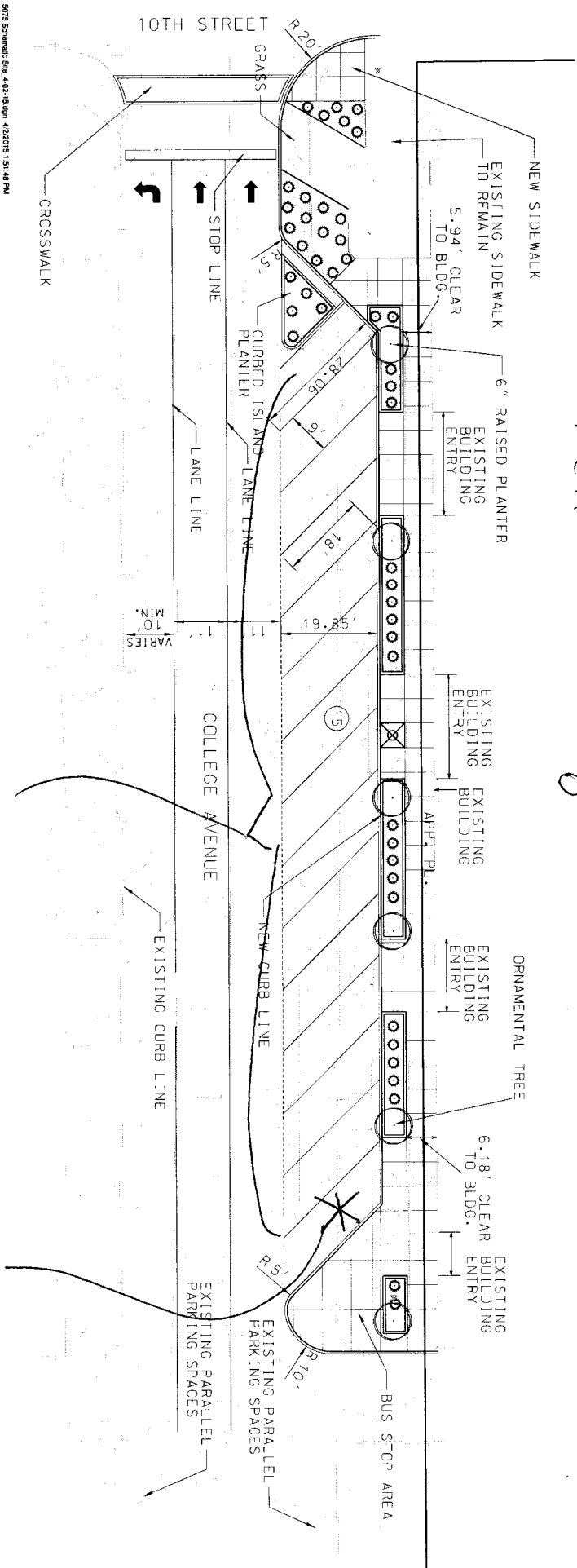
The Gateway on-street parking – two 15 minute parking spaces and one ADA parking spaces.

Following discussion at the September meeting and further consideration over American with Disabilities Act (ADA) parking requirements, staff has determined that one handicapped parking space must also be provided at the Gateway location. Currently there are no on-street ADA accessible parking spaces as required by the City's adoption of Public Rights-of-Way Accessibility Guidelines (PROWAG) at this location. The guidelines require at least one ADA on-street parking space for every 1 to 25 on-street parking spaces (*R214 On-Street Parking Spaces*). The 10th and College location currently has one on-street ADA parking space immediately north of the proposed 15 minute space. Thus, at this time no additional ADA parking spaces are needed.

To accommodate this request, the Bloomington Municipal Code would need to be amended. Specifically, Title 15.32.090 Limited Parking Zones, Schedule N and Title 15.32.150 Accessible Parking for Persons with Physical Disabilities, Schedule S would need to be changed. A total of three 15 minute, any time, parking restrictions will be added to Schedule N. A total of one ADA parking space would be added to Schedule S. If approved, a more detailed amendment will be prepared once this request is forwarded to the Common Council for their consideration

Recommendation: Staff recommends modifying the following general locations to Title 15.32.090 Limited Parking Zones, Schedule N: College Avenue, change 30' south of 17th Street to ~50' south of 17th Street, on the east side of the street, so two, 2 hour limit, for any time parking spaces can change into 2, 15 minute limit, for any time parking spaces; College Avenue, add 30' south of 17th Street to ~50 south of 17th Street, on the east side of the street, 15 minute limit, for any time; and add College Avenue, ~260' north of 10th street to ~275' north of 10th Street, on the west side of the street, 15 minute limit, for any time. Staff also recommends modifying Title 15.32.150 Accessible Parking for Persons with Physical Disabilities, Schedule S to include one space in the 1200 Block of North College Avenue – the first space north of the driveway entrance to the Gateway on the east side of College Avenue.

Tenth & College Building

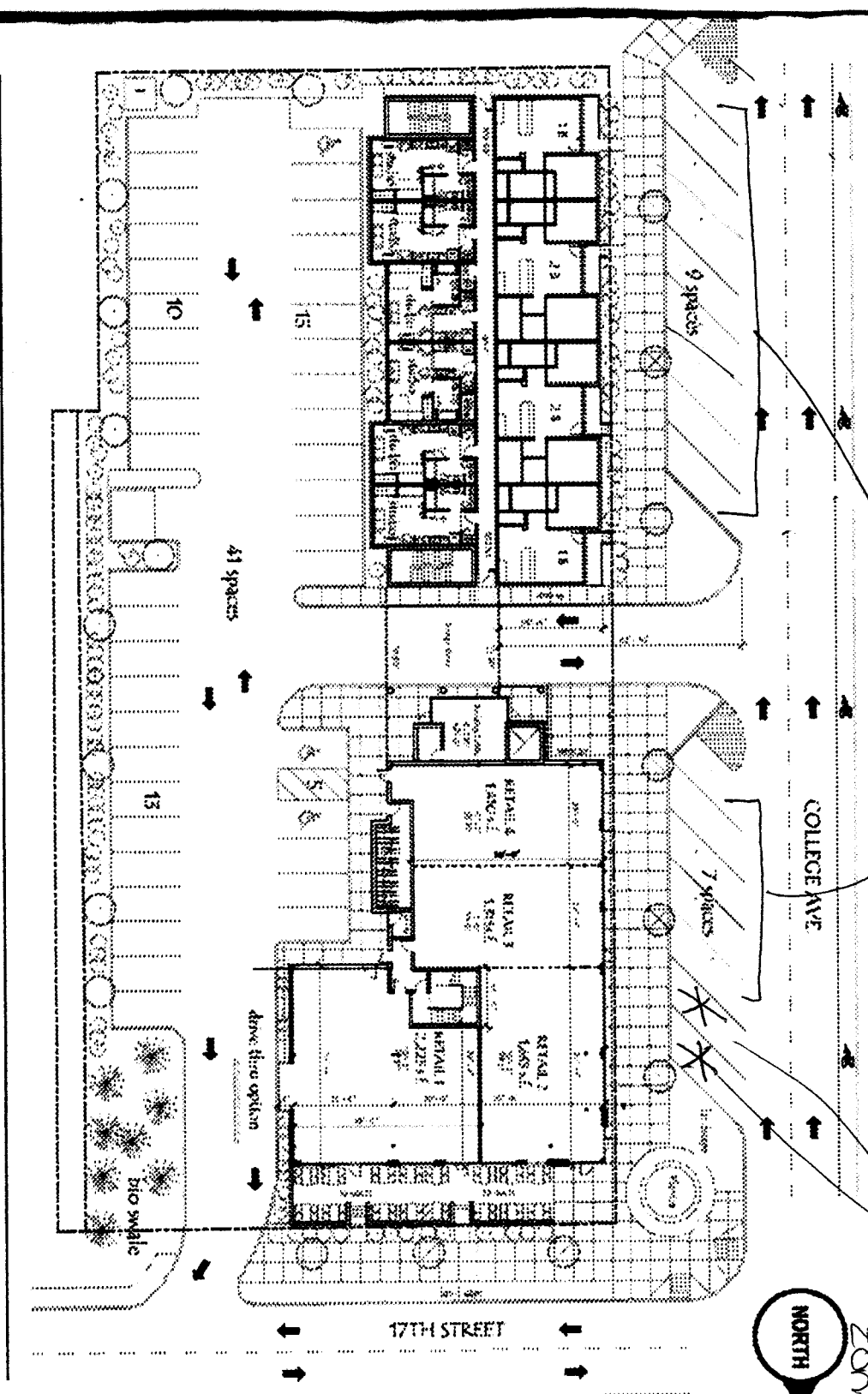


9075 Schematic Site 4.02.15.dgn 1/20/15 1:51:48 PM

2 hour, metered

15 minute metered (?)





(14) 2 hour, signed/restricted

(2) 15min "loading zone"



COMMERCIAL SPACES

GATEWAY

APARTMENTS & RETAIL

Cedarview Management

(812) 339-8777

info@biocomingateway.com



MEMORANDUM

To: Traffic Commission
From: Nate Nickel, Sr. Long Range Planner
Date: October 21, 2015
Re: N. Dunn Street No Parking Zone

Background

The Planning and Transportation Department received a request from the Public Works Department to restrict parking on N. Dunn Street, specifically between E. 12th and E. 10th Streets. The restriction would create a no parking zone on the west side of the street, thus only allowing parking on the east side of the street. This request is in response to the extreme difficulty that both Sanitation Department trash trucks and Street Department snow plows have experienced in navigating this narrow section of N. Dunn Street (approximately 20'). The narrow road width, combined with the current configuration of parking being allowed on both sides of the street, is causing a conflict with these large municipal vehicles and is a potential safety concern.



Looking north on N. Dunn Street from the intersection of E. Cottage Grove Avenue.



Looking south on N. Dunn Street from the intersection of E. Cottage Grove Avenue.



Looking north on N. Dunn Street from the intersection with E. 10th Street.



Looking south on N. Dunn Street from the intersection with E. 11th Street.

To accommodate this request, the Bloomington Municipal Code would need to be amended. Specifically, Title 15.32.080, Schedule M – No Parking Zones would need to include N. Dunn Street from E. 12th Street to E. 10th Street, with a “West” Side of Street and an “Any Time” Restrict. If approved, ‘No Parking’ signs would be placed along the entire west side of N. Dunn Street within this designated area in order to reflect the amendment.

Recommendation: Staff recommends amending Title 15.32.080, Schedule M – No Parking Zones to create a no parking zone along the west side of N. Dunn Street between E. 12th and E. 10th Streets.



MEMORANDUM

To: Traffic Commission
From: Nate Nickel, Senior Long Range Planner
Date: October 21, 2015
Re: Traffic Inquiries

Background

The Planning and Transportation Department has received several Traffic Inquiries from the public, which are outlined below. The nature of Traffic Inquiries vary, but are within the purview of the Traffic Commission. The intent of Traffic Inquiries is to hear citizen requests and then leverage both the advisory role of the Commission, as well as citizen input, before a request is formally considered. The Traffic Inquiries process also allows City staff to properly evaluate and prepare information for any potential future Traffic Inquiries to be heard by the Commission.

Basic information on Traffic Inquiries received by the Department are summarized below, as well as listed on the agenda. A respective map and site photos are also included for each Traffic Inquiry within the meeting packet for reference. Citizens that make Traffic Inquiries (either by phone, email, letter, U-Report, or in person) will be invited to attend the respective Traffic Commission meeting and given an opportunity to provide additional information.

Traffic Inquiries

- Revise no-parking area to allow parking on a paved pull-off areas located at 2401 and 2408 E. 4th Street.

Recommendations

Staff requests that the Traffic Commission identify those Traffic Inquiries that will need further analysis before a future case can be heard. Specific types of information, as well as possible solutions to consider, are also requested by staff.



2401 & 2408 E. 4th Street

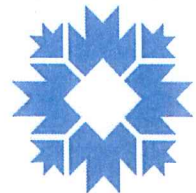
Allow on-street parking for the paved pull-off areas at these locations

By: nickeln
8 Oct 15



For reference only; map information NOT warranted.

City of Bloomington
Planning & Transportation



Scale: 1" = 50'





The dead-end of E. 4th Street (~20'), with the paved pull-off parking areas of 2408 (left) and 2401 (right).



A close-up look at the pull-off parking area located at 2401 E. 4th Street.