

# **Transportation Improvement Program**

**Fiscal Years 2009 through 2012**

***Adopted***  
**June 13, 2008**



*(This page intentionally left blank.)*

## Table of Contents

<b>Introduction</b>	3
Applicability	3
Air Quality	3
Fiscal Constraint	3
Year of Implementation Dollars	3
Amendment Process	3
Project Selection	4
FY 2009-2012 TIP Development Timeline	4
<b>TIP Development Process</b>	5
<b>Annual Listing of Projects</b>	6
Fiscal Year 2008 Listing of Obligated Projects Table	7
<b>Local Revenue &amp; Expenditure Summary</b>	8
Revenue Table	8
Expenditure Table	9
<b>Programmed Projects</b>	
State of Indiana	10
Summary of Programmed Expenditures	17
Monroe County	18
Summary of Programmed Expenditures	25
City of Bloomington	26
Summary of Programmed Expenditures	38
Town of Ellettsville	39
Summary of Programmed Expenditures	41
Rural Transit	42
Summary of Programmed Expenditures	43
Bloomington Transit	44
Summary of Programmed Expenditures	45
Indiana University Campus Bus	46
Summary of Programmed Expenditures	46
<b>Listing of Local Public Agency Projects by Year</b>	47
<b>Abbreviations and Acronym List</b>	50
<b>MPA/UAB Boundary Map</b>	51
<b>Adoption/Amendment Resolutions</b>	52

*(This page intentionally left blank.)*

## Introduction

The Transportation Improvement Program (TIP) is a strategic capital planning document used by the Bloomington/Monroe County Metropolitan Planning Organization (MPO) to program funding for transportation projects. Pursuant to the Safe, Accountable, Flexible, Efficient Transportation Equity Act: A Legacy for Users (SAFETEA-LU), the TIP must include at least four fiscal years, and is updated annually. The TIP includes the list of priority projects to be carried out in each of the four years indicated in the document. The TIP must be consistent with the *2030 Long Range Transportation Plan*, the *Transit Development Plan*, and other planning studies developed by the Bloomington/Monroe County MPO and its local stakeholders.

### ***Applicability***

The TIP is a multi-modal capital budgeting tool that specifies an implementation timetable, funding sources, and responsible agencies for transportation related projects. Projects come from any one of the following six implementing agencies (refer to page 51 for a map of the MPO's urbanized area boundary):

- The Indiana Department of Transportation\*
- Monroe County\*
- City of Bloomington
- Town of Ellettsville
- Bloomington Public Transportation Corporation (Bloomington Transit)
- Rural Transit\*
- Indiana University Campus Bus
- Monroe County Community School Corporation\*
- Richland-Bean Blossom Community School Corporation\*

*\*Note: These agencies service an area larger than the MPO's urbanized area and may have capital projects that use federal funding which are not reflected in this document.*

### ***Air Quality***

The MPO, the Federal Highway Administration (FHWA), and the Federal Transit Administration (FTA) must all determine that new, or amended, TIP documents conform with the State's Air Quality Plan's purpose of attaining the National Ambient Air Quality Standards (NAAQS). The only exception is for amendments involving projects explicitly exempted by the U.S. Environmental Protection Agency's (EPA) conformity regulation. The Bloomington/Monroe County MPO is exempt from the air quality requirements because it has not been designated as a non-attainment area.

### ***Fiscal Constraint***

The TIP must be financially constrained by year and include only those projects for which funding has been identified - using current, or reasonably available, revenue sources. The financial plan in the TIP is developed by the MPO in cooperation with the State of Indiana and area transit operators. In order to enable the MPO to conduct adequate financial planning, both the state and transit operators provide the MPO with information early in the TIP development process. The information provided by these groups concerns the likely amount of Federal and State funding available to the MPO.

### ***Year of Implementation Dollars***

SAFETEA-LU mandates that the TIP reflect project costs in year of implementation dollars. By doing so, projects should anticipate less unforeseen cost over-runs which could jeopardize project implementation. Consequently, a four percent (4%) inflation factor was applied to all phases of all local projects identified in the TIP (FY 2009 was used as the base year). This inflation rate was agreed upon by local project implementing agencies.

### ***Amendment Process***

The TIP may be modified at any time, provided that appropriate public involvement occurs. However, minor TIP amendments may, unless specifically required by the MPO's Public Participation Plan, be made without public involvement. Additionally, projects may be advanced from future years to current years, without a TIP amendment so long as each year of the TIP cycle remains fiscally constrained. The TIP must be approved by the MPO and the Governor of the State of Indiana. A conformity determination must also be made by the FHWA and the FTA. Once approved, the TIP then becomes, without modification, part of the Statewide Transportation Improvement Program (STIP). The frequency and cycle for updating the TIP should be compatible with that of the STIP.

**Project Selection**

Projects listed in the TIP typically originate in the Long Range Transportation Plan (LRTP) developed by the MPO in cooperation with the respective implementing agencies involved in the planning process. These implementing agencies then carry out the transportation plan's specific elements in the TIP. As a result, the TIP serves as a strategic management tool that accomplishes the objectives of the MPO transportation plan.

Project prioritization is an important element of the TIP, especially since the demand for Federal-aid transportation projects usually exceeds the level of Federal funds available for use. State highway projects in the TIP have been prioritized by the Indiana Department of Transportation. Local Federal-aid highway improvement projects programmed by the City of Bloomington, Monroe County and the Town of Ellettsville have been prioritized according to resource availability. Highway improvement projects in the MPO's urbanized area may be prioritized based on the following general hierarchy:

1. Unfunded capital projects that have been programmed and are ready for contract letting;
2. Capital projects programmed for construction that will be ready for contract letting in the immediate future;
3. Projects involving traffic operation or system management improvements;
4. Projects programmed for right-of-way acquisition, and
5. Projects programmed for preliminary engineering and/or advanced studies.

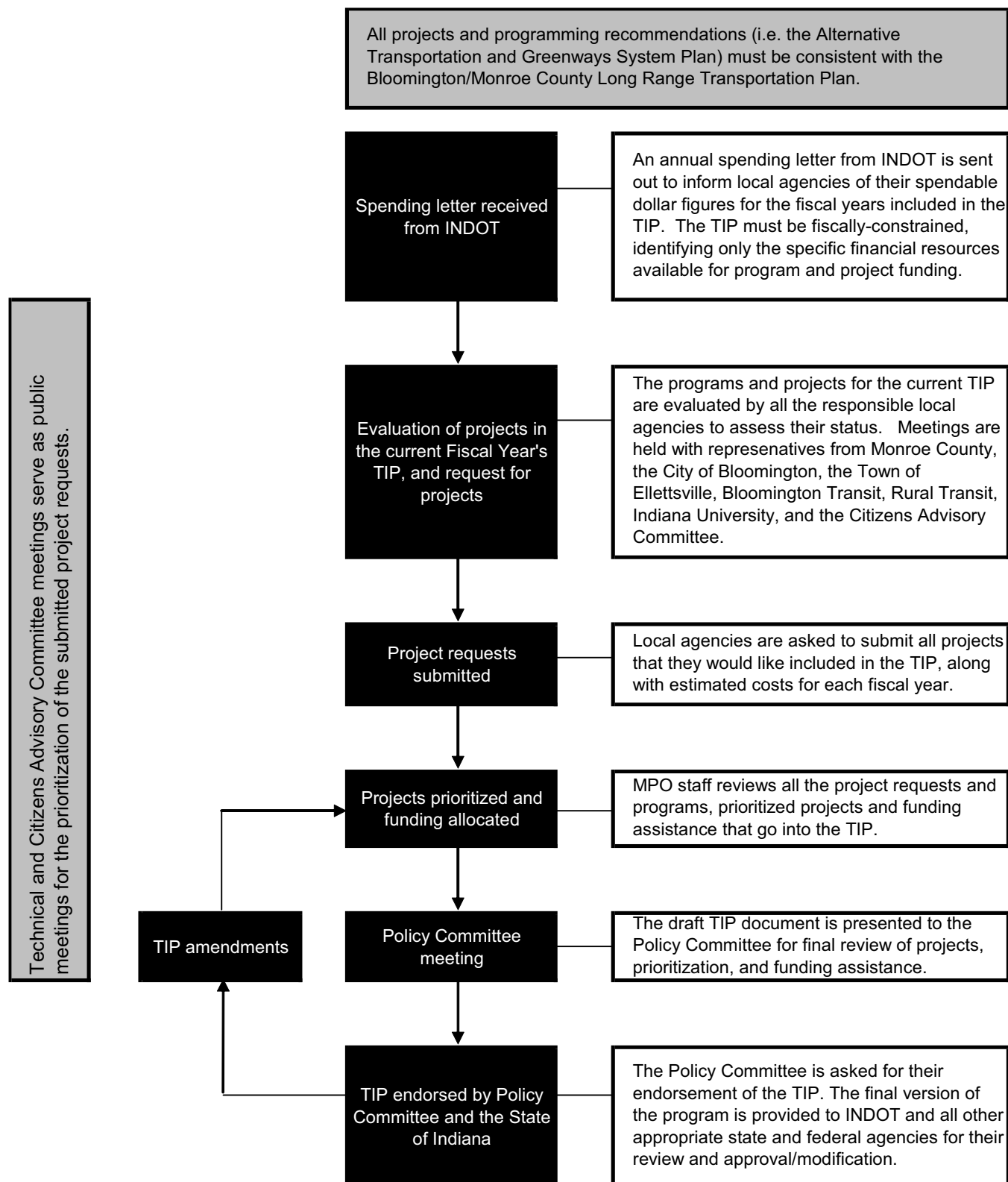
Projects initiated locally are jointly prioritized according to the type of activity scheduled in the TIP and the Federal funding category. The process of prioritizing projects is also influenced by state and local policy-level decision making and the availability of Federal, state, and local funds. Wherever possible, technical and non-technical factors are jointly used to identify projects which have the greatest need for implementation.

**FY 2009-2012 TIP Development Timeline**

The following list provides a chronology of events and meetings that have taken place in development of this document:

<u>Date</u>	<u>Description</u>
12/13/2007	Meeting with LPAs to discuss potential projects
2/5/2008	Follow-up meeting with LPAs to review potential projects and revenue estimates
2/22/2008	Draft TIP project listing first presented to the Technical Advisory Committee
2/27/2008	Draft TIP project listing first presented to the Citizens Advisory Committee
3/7/2008	Draft TIP project listing first presented to the Policy Committee
3/26/2008	Draft TIP project listing consideration by the Citizens Advisory Committee
3/28/2008	Draft TIP project listing consideration by the Technical Advisory Committee
4/17-5/16/2008	30 Day public review period (legal notice 4/17/08)
4/23/2008	Draft TIP document review by the Citizens Advisory Committee
4/25/2008	Draft TIP document review by the Technical Advisory Committee
5/9/2008	Draft TIP document review by the Policy Committee
5/23/2008	Final draft TIP document review/recommendation by the Technical Advisory Committee
5/28/2008	Final draft TIP document review/recommendation by the Citizens Advisory Committee
6/13/2008	Final TIP document review/adoption by the Policy Committee

## TIP Development Process



## Annual Listing of Projects

SAFETEA-LU requires Metropolitan Planning Organizations to prepare an annual listing of projects, including investments in pedestrian walkways and bicycle transportation facilities, for which Federal funds have been obligated in the preceding year. The listing shall be published or otherwise made available by the cooperative effort of the State, transit operators, and the Metropolitan Planning Organization for public review. The listing shall be consistent with the funding categories identified in each Transportation Improvement Program (TIP). This requirement has been revised by the SAFETEA-LU, 23 U.S.C. 134(j)(7)(B), 23 U.S.C. 135(g)(4)(B), 49 U.S.C. 5303(j)(7)(B), and 49 U.S.C. 5304(g)(4)(B).

An obligation could be defined as the federal government's legal commitment to pay the federal share of a project's cost. An obligated project is one that has been authorized by a federal agency, such as the Federal Highway Administration (FHWA) or the Federal Transit Administration (FTA). Obligated projects are not necessarily initiated or completed in the programmed year and the amount of the obligation may not necessarily equal the total cost of the project. For FTA projects, obligation occurs when the FTA grant is awarded. For FHWA projects, obligation occurs when a project agreement is executed and the state/grantee requests that the funds be obligated.

The following table provides information on transportation projects in the Bloomington/Monroe County Metropolitan Planning Organization's Urbanized Area which have obligated the spending of federal funds. The information provided below is consistent with project listings of the FY 2007-2009 TIP. The list provides information on the amount of funds programmed in the TIP, the amount of funds obligated during the past fiscal year(s) and the amount of funds remaining and available for use in subsequent years.

Fiscal Year 2008 Listing of Obligated Projects							
LPA	2008 Projects	Brief Description	Phase	Federal Program	Programmed Federal Funding	Obligated Federal Funding	Remaining Funds
BL	Rogers Street & Country Club Drive	Intersection modernization with a new traffic signal, turn lanes, sidewalk/sidepath, roadway widening and stormwater drainage improvements	CON	STP	\$ 2,007,948	\$ 1,798,102	\$ 209,846 *
BL	West 3rd Street	Road reconstruction, channelized intersections, drainage improvements, sidewalks/sidepaths, landscaping and signalization	ROW	TEA-21	\$ 1,586,767	\$ 206,968	\$ 1,379,799 *
BL	B-Line Trail	Site acquisition and construction of a downtown multi-use trail for non-motorized use, including site amenities, landscaping, and plaza space. (~.68 miles long)	CON	TE	\$ 2,820,000	\$ 2,820,000	\$ - *
BL	17th Street & Fee Lane	Intersection modernization with new sidepath, signalization upgrade, turn lanes, and sight distance correction.	CON	HES	\$ 694,386	\$ 553,692	\$ 140,694 *
MC	Vernal Pike Phase I	Road reconstruction and safety improvements from Hartstrait Rd to Curry Pike including pavement, curb & gutter, sidewalk, drainage, and bridge widening	CON	STP	\$ 6,565,120	\$ 4,496,074	\$ 2,069,046 *
MC	Bridge #78	Bridge reconstruction at Rogers St. and Clear Creek	CON	STP	\$ 890,496	\$ 829,693	\$ 60,803 *
MC	Bridge #902	Bridge reconstruction at 1st St. and Walnut St.	CON	STP	\$ 3,220,000	\$ 2,931,887	\$ 288,113 *
MCCSC	MCCSC Bike/ped Education	Biking and walking campaign at Batchelor Middle School; walking school bus fro Summit Elementary; International Walk to School Day activities; & bicycle rodeos.	n/a	SRTS	\$ 53,500	\$ 53,500	\$ - *
RBBCSC	RBBCSC Bike/ped Education	Biking and walking campaign at Edgewood campus including bicycle rodeos and walking school bus program	n/a	SRTS	\$ 23,000	\$ 23,000	\$ - *

\*These projects are not necessarily completed yet and may need a portion of or all remaining funds.



Fiscal Year 2008 Listing of Obligated Projects (Continued)							
LPA	2008 Projects	Brief Description	Phase	Federal Program	Programmed Federal Funding	Obligated Federal Funding	Remaining Funds
BT	Operational Assistance	Federal, State and Local Assistance for the operation of BT's fixed route & Access Service.	n/a	FTA 5307	\$ 900,000	\$ 900,000	\$ -
BT	Passenger Shelters	Purchase of passenger shelters for BT stops	n/a	FTA 5307	\$ 20,000	\$ 20,000	\$ -
BT	Security Cameras	Security camera system for facilities	n/a	FTA 5307	\$ 40,000	\$ 40,000	\$ -
BT	Paratransit Scheduling System	Purchase of new paratransit scheduling system	n/a	FTA 5307	\$ 60,000	\$ 60,000	\$ -
BT	Maintenance	Capitalize the purchase of engine/transmission rebuilds & tires	n/a	FTA 5307	\$ 59,488	\$ 59,488	\$ -
BT	Administrative Vehicles	Purchase supervisory vehicle and handicapped accessible van.	n/a	FTA 5307	\$ 32,000	\$ 32,000	\$ -
BT	Cleaning Equipment	Replace bus cleaning equipment and upgrade wash bay heat, heat retention, drainage and lighting	n/a	FTA 5307	\$ 320,000	\$ 320,000	\$ -
RT	Operating Budget	Operating budget assistance	n/a	FTA 5311	\$ 450,000	\$ 450,000	\$ -
RT	Capital Budget	Capital budget assistance. Replace 2 diesel buses and radio equipment	n/a	FTA 5311	\$ 110,000	\$ 110,000	\$ -
MPO	Change Order Reserve	Change Orders executed for Vernal Pike Phase I (Monroe County) and Rogers Street (City of Bloomington)	n/a	STP	\$ 113,911	\$ 57,779	\$ 56,132
TOTAL					\$ 19,852,705	\$ 15,704,404	\$ 4,148,301

## Local Revenue & Expenditure Summary

In order to remain fiscally constrained, the Transportation Improvement Program must balance estimated project expenditures with expected funding revenues. In addition, each particular source of funding must be used in a manner consistent with its designated purpose. The process of balancing expenditures across the portfolio of available funds requires cooperation and support from all of the MPO stakeholders. The Fiscal Year used for the purposes of the TIP begins on July 1 and ends on June 30. Thus, Fiscal Year 2009 begins on July 1, 2008 and ends on June 30, 2009.

The tables in this section summarize the projected local revenues and expenditures for Fiscal Years 2009 through 2012. They do not include programmed funds or projects for the State of Indiana, as these are subject to statewide financial constraints beyond the purview of the MPO. Non-local revenue forecasts are based on past receipts, projections from the FHWA, FTA, and INDOT, anticipated Federal spending authorization levels, and consultations with appropriate Federal and state funding agencies. Local funding forecasts are derived from a similar methodology and through extensive coordination with local agencies. Project expenditures are based on realistic cost estimates provided by the implementing agency for each project.

### Projected Revenues for Local Projects

The table below summarizes the projected funding available, by funding source, for programming in the FY 2009-2012 TIP. The STP line highlights estimated spending authority available through FY 2012 from the SAFETEA-LU transportation bill. The TEA-21 line shows spending authority that was carried over from the previous transportation bill through special TIP amendments. This table does not include Federal revenues that may be added through special Congressional earmarks in the future. Any project utilizing such funds has been marked as "Illustrative" and is not counted in the fiscal constraint analysis.

#### Revenues

Funding Source	Fiscal Year				
	2009	2010	2011	2012	TOTAL
TEA-21	\$ 1,646,767	\$ -	\$ -	\$ -	\$ 1,646,767
STP	\$ 3,684,739	\$ 2,720,869	\$ 2,720,869	\$ 2,720,869	\$ 11,847,346
State	\$ 200,000	\$ -	\$ -	\$ -	\$ 200,000
TE	\$ 669,610	\$ 1,000,000	\$ -	\$ -	\$ 1,669,610
SRTS	\$ 635,000	\$ -	\$ -	\$ -	\$ 635,000
HSIP/HES	\$ 729,951	\$ 175,951	\$ 175,951	\$ 175,951	\$ 1,257,804
Bridge	\$ -	\$ 103,680	\$ -	\$ 57,024	\$ 160,704
FTA 5307/09	\$ 9,611,558	\$ 2,512,774	\$ 1,452,293	\$ 1,524,148	\$ 15,100,773
FTA 5310	\$ 160,000	\$ -	\$ -	\$ -	\$ 160,000
FTA 5311	\$ 661,020	\$ 676,000	\$ 697,600	\$ 739,200	\$ 2,773,820
FTA 5316	\$ 269,200	\$ 216,320	\$ 224,973	\$ 233,972	\$ 944,465
FTA 5317	\$ 87,200	\$ 27,040	\$ 28,122	\$ 29,246	\$ 171,608
PMTF	\$ 2,052,272	\$ 2,134,363	\$ 2,219,737	\$ 2,308,527	\$ 8,714,899
Farebox	\$ 1,185,600	\$ 1,233,024	\$ 1,282,345	\$ 1,333,639	\$ 5,034,608
Local	\$ 12,260,521	\$ 6,986,903	\$ 9,434,072	\$ 4,458,719	\$ 33,140,214
<b>TOTAL</b>	<b>\$ 33,853,438</b>	<b>\$ 17,786,924</b>	<b>\$ 18,235,962</b>	<b>\$ 13,581,294</b>	<b>\$ 83,457,618</b>

### Programmed Expenditures for Local Projects

The table below summarizes the programmed local expenditures, by funding source, for projects in the FY 2009-2012 TIP. The available STP funding has been programmed to ensure a 5% reserve to cover project cost overruns. Any usage of funds from this reserve will be subject to the MPO's Change Order Policy. The TEA-21 funding carried over from the previous transportation bill has been fully programmed and will remain assigned to the projects it was allocated to at the end of that funding cycle.

#### Expenditures

Funding Source	Fiscal Year				
	2009	2010	2011	2012	TOTAL
TEA-21	\$ 1,646,767	\$ -	\$ -	\$ -	\$ 1,646,767
STP	\$ 3,653,315	\$ 2,676,464	\$ 2,663,043	\$ 2,636,043	\$ 11,628,867
State	\$ 200,000	\$ -	\$ -	\$ -	\$ 200,000
TE	\$ 669,610	\$ 1,000,000	\$ -	\$ -	\$ 1,669,610
SRTS	\$ 635,000	\$ -	\$ -	\$ -	\$ 635,000
HSIP/HES	\$ 554,000	\$ -	\$ -	\$ -	\$ 554,000
Bridge	\$ -	\$ 103,680	\$ -	\$ 57,024	\$ 160,704
FTA 5307/09	\$ 9,611,558	\$ 2,512,774	\$ 1,452,293	\$ 1,524,148	\$ 15,100,773
FTA 5310	\$ 160,000	\$ -	\$ -	\$ -	\$ 160,000
FTA 5311	\$ 661,020	\$ 676,000	\$ 697,600	\$ 739,200	\$ 2,773,820
FTA 5316	\$ 269,200	\$ 216,320	\$ 224,973	\$ 233,972	\$ 944,465
FTA 5317	\$ 87,200	\$ 27,040	\$ 28,122	\$ 29,246	\$ 171,608
PMTF	\$ 2,052,272	\$ 2,134,363	\$ 2,219,737	\$ 2,308,527	\$ 8,714,899
Farebox	\$ 1,185,600	\$ 1,233,024	\$ 1,282,345	\$ 1,333,639	\$ 5,034,608
Local	\$ 12,260,521	\$ 6,986,903	\$ 9,434,072	\$ 4,458,719	\$ 33,140,214
<b>TOTAL</b>	<b>\$ 33,646,063</b>	<b>\$ 17,566,569</b>	<b>\$ 18,002,185</b>	<b>\$ 13,320,517</b>	<b>\$ 82,535,335</b>

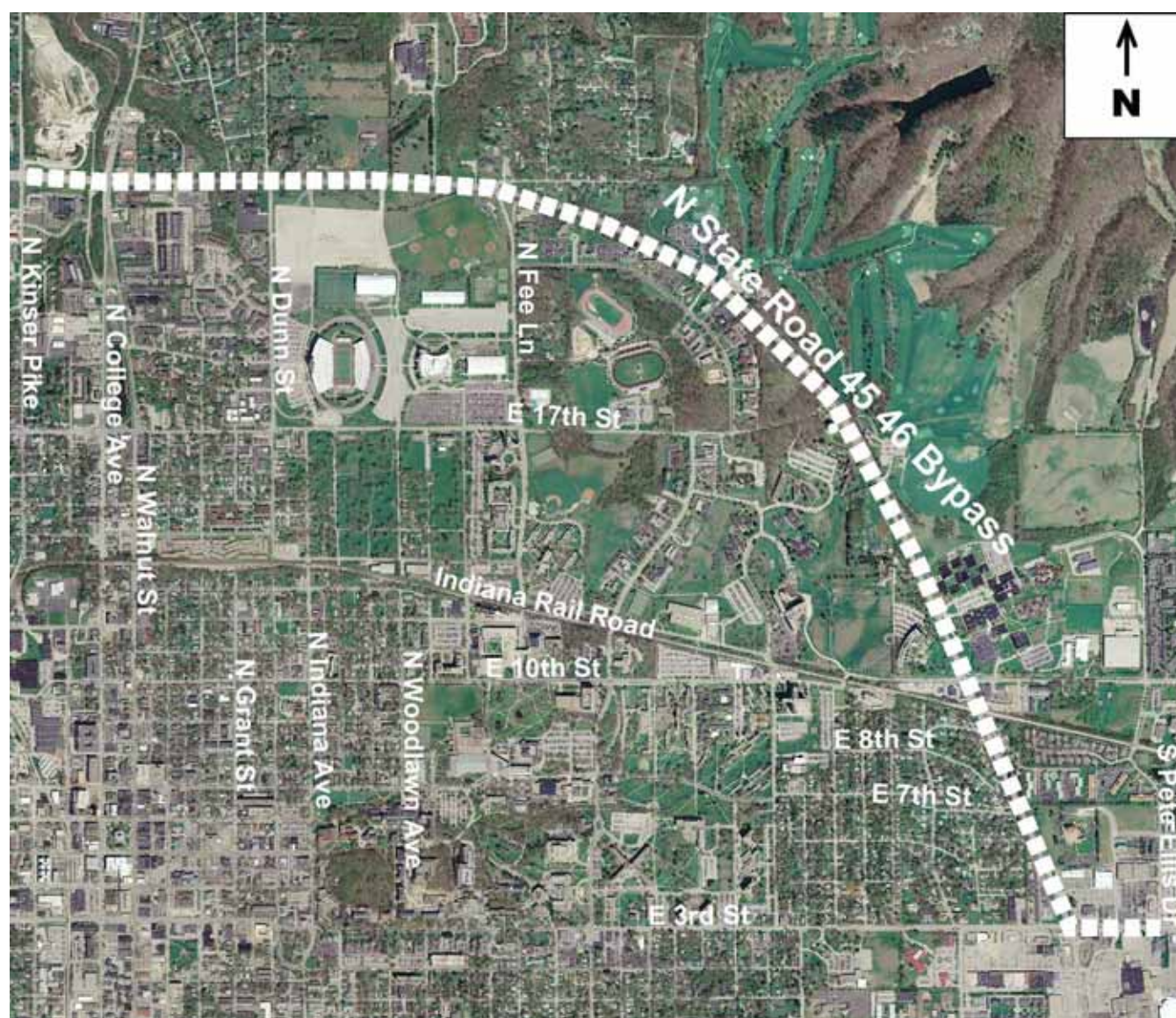
### Programmed Projects

The following tables provide a description of each project programmed in the Transportation Improvement Program for fiscal years 2009 to 2012. The tables are organized by implementing entity in the following order: Indiana Department of Transportation, Monroe County, City of Bloomington, Town of Ellettsville, Rural Transit, Bloomington Transit, and Indiana University Campus Transit. At the end of each agency's section is a summary of programmed expenditures by funding source for each fiscal year.

Additionally, each project which involves an identifiable location is also accompanied by a visualization of the approximate project boundaries. The dashed white lines provide an estimation of project location based on best available information available at the time this document was developed. These graphics are provided for the sake of reference only and should not be interpreted as exact delineations of project alignment.

## Programmed Projects: State of Indiana

State of Indiana Projects		Funding Source	2009	2010	2011	2012
<b>Project:</b> State Road 45/46 Bypass	PE	STP				
<b>Location:</b> Kinser Pike to Pete Ellis Dr.		State				
<b>Description:</b> Added travel lanes, including 2 bridges, signals, sidepaths, pedestrian underpass. DES. #'s: 0300585, 9010075, 9611470, (~2.80 miles)	ROW	STP				
		State				
<b>DES#:</b> (see Description above)	CON	STP	\$ 18,601,574			
<b>Support:</b> Expansion/Major Improvements		State	\$ 4,650,394			
<b>Allied Projects:</b> State Road 45 projects	<b>TOTAL</b>		\$ 23,251,968	\$ -	\$ -	





## Programmed Projects: State of Indiana

State of Indiana Projects		Funding Source	2009	2010	2011	2012
<b>Project:</b> State Road 45/46	PE ROW CON					
<b>Location:</b> Monroe Street to Kinser Pike						
<b>Description:</b> Pavement rehabilitation (~.48 miles long)						
<b>DES#:</b> 0600811	CON	STP	\$ 1,840,000			
<b>Support:</b> Non-Interstate Preservation		State	\$ 460,000			
<b>Allied Projects:</b> State Road 45/46 projects		<b>TOTAL</b>	\$ 2,300,000	\$ -	\$ -	





## Programmed Projects: State of Indiana

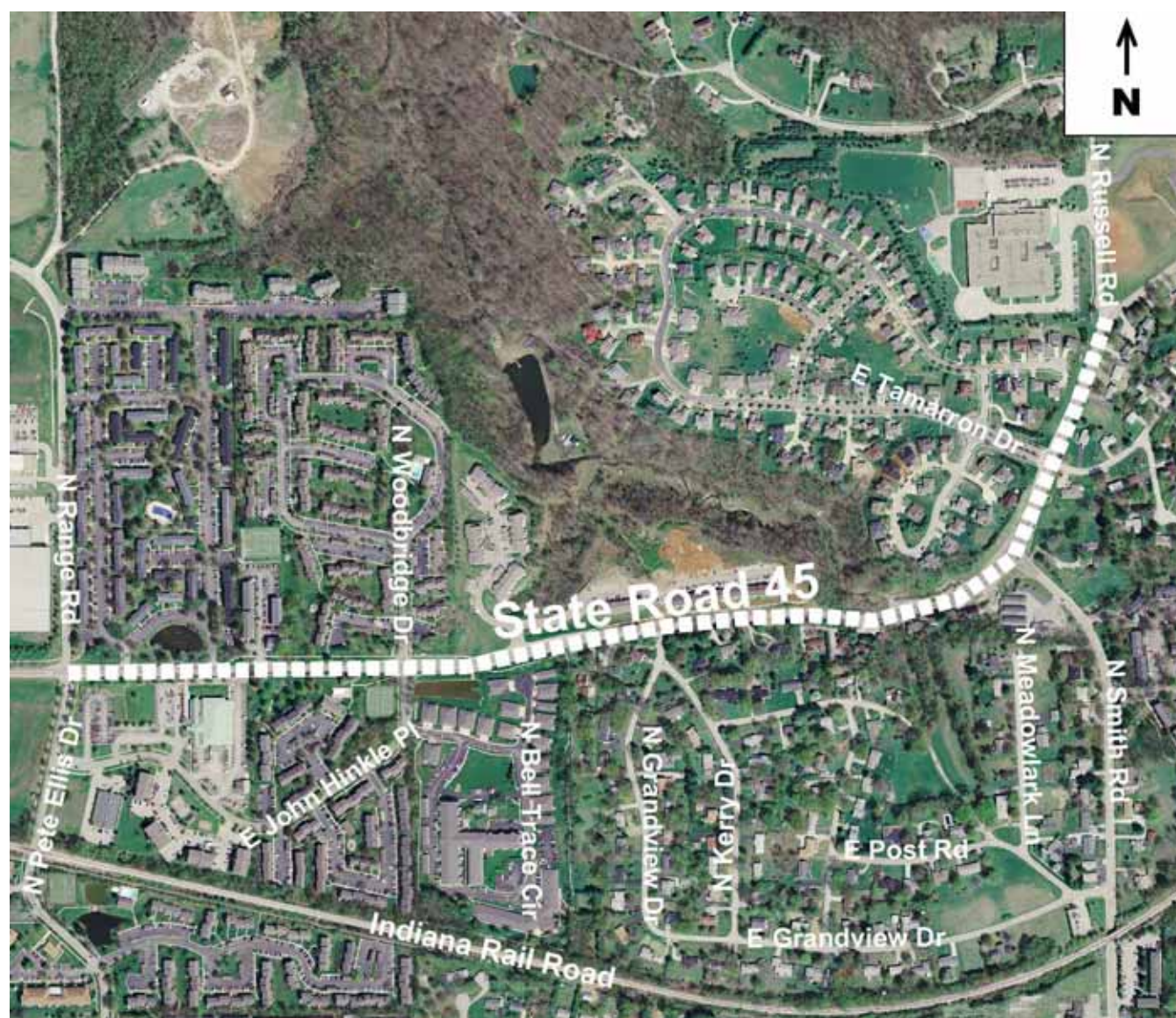
State of Indiana Projects		Funding Source	Fiscal Year			
			2009	2010	2011	2012
<b>Project:</b> State Road 45	PE					
<b>Location:</b> 0.1 miles east of SR 45/46 Bypass to 0.1 miles east of Pete Ellis Drive						
<b>Description:</b> Added travel lanes, traffic signals (~.30 miles long)	ROW	STP State				
<b>DES#:</b> 8824615, 947897A	CON	STP State	\$ 1,711,327			
<b>Support:</b> Non-Interstate Preservation Program			\$ 427,832			
<b>Allied Projects:</b> State Road 45/46 Bypass, State Road 45		<b>TOTAL</b>	\$ 2,139,159	\$ -	\$ -	





## Programmed Projects: State of Indiana

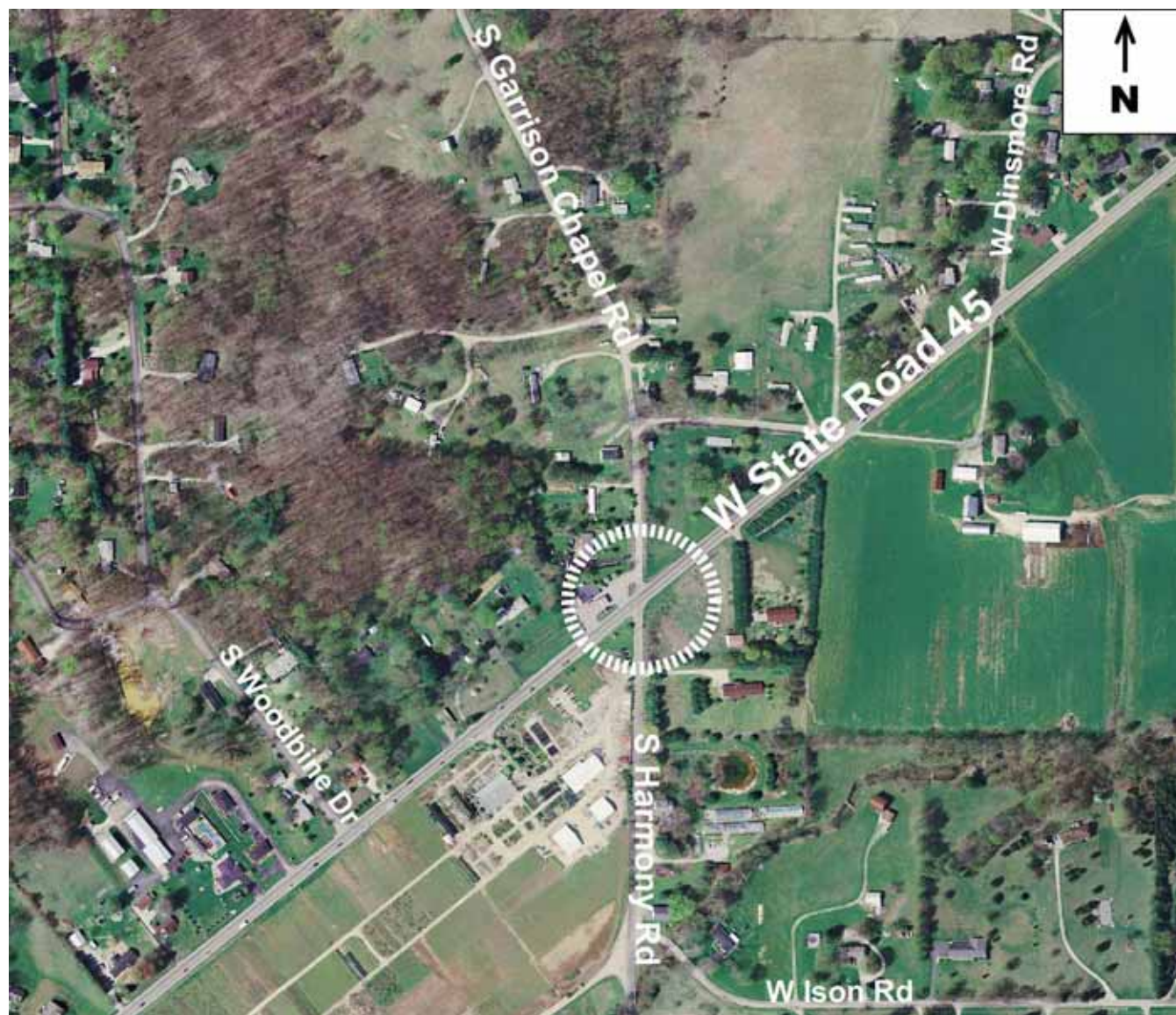
State of Indiana Projects		Funding Source	Fiscal Year			
			2009	2010	2011	2012
<b>Project:</b> State Road 45	PE	STP				
<b>Location:</b> Pete Ellis Drive to Russell Road		State				
<b>Description:</b> Road reconstruction, widening up to 3 lanes with intersection improvements, signals as warranted, sidewalk/sidepaths, concrete curb & gutter, drainage and landscaping. (~.88 miles long)	ROW	STP	\$ 750,000			
<b>DES#:</b> 9902910	CON	State			\$ 3,994,482	
<b>Support:</b> Safety					\$ 998,620	
<b>Allied Projects:</b> State Road 45/46 Bypass	<b>TOTAL</b>		\$ 750,000	\$ -	\$ 4,993,102	





# Programmed Projects: State of Indiana

State of Indiana Projects		Funding Source	2009	2010	2011	2012
<b>Project:</b> State Road 45	PE ROW CON	STP State				
<b>Location:</b> Intersection of State Road 45 and Garrison Chapel Rd.		STP State		\$ 88,000 \$ 22,000		
<b>Description:</b> Intersection improvement with added turn lanes		STP State				
<b>DES#:</b> 0710011						
<b>Support:</b> Non-Interstate Preservation						
<b>Allied Projects:</b> n/a		<b>TOTAL</b>	\$ -	\$ 110,000	\$ -	\$ -





## Programmed Projects: State of Indiana

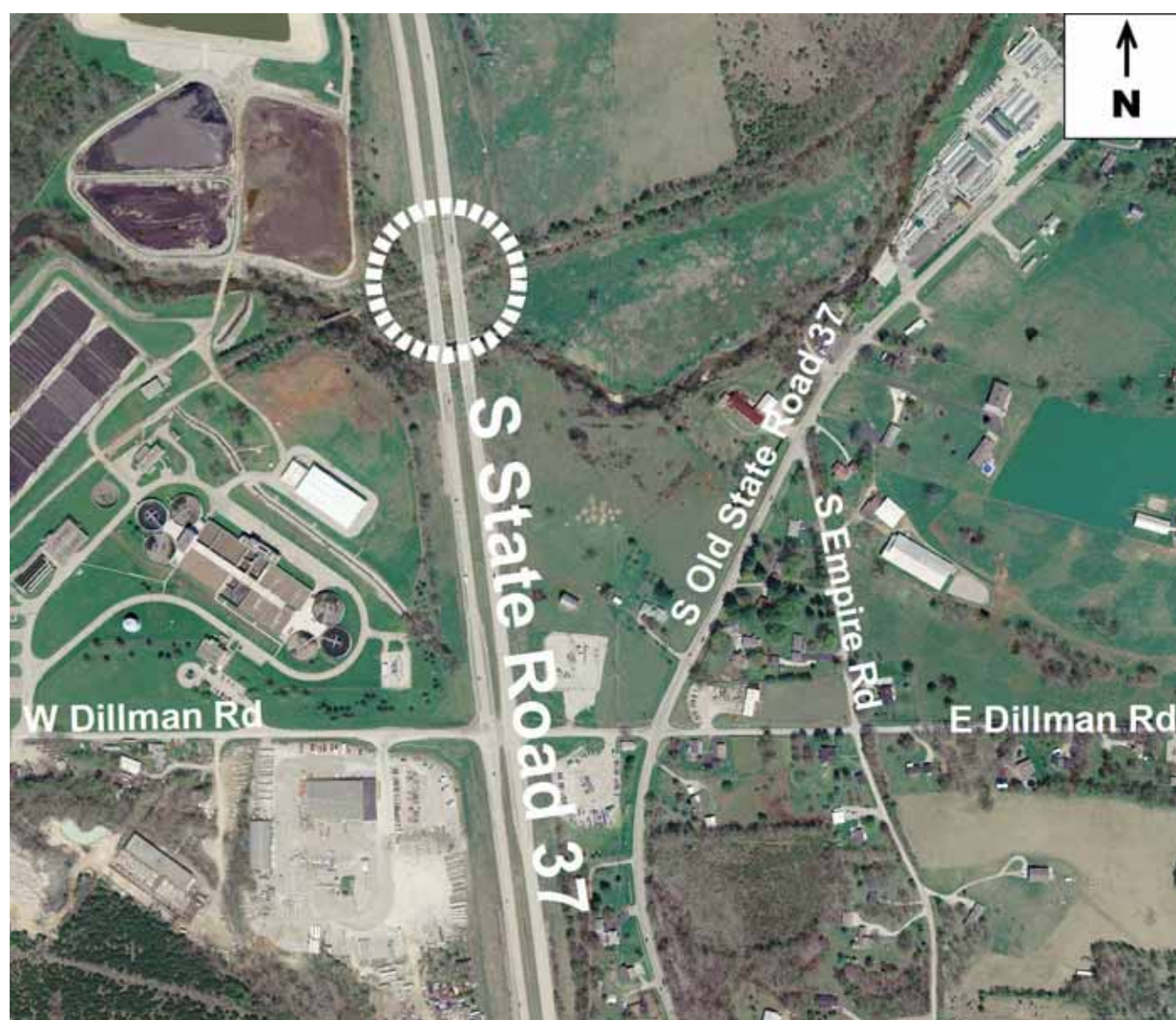
State of Indiana Projects		Funding Source	2009	2010	2011	2012
<b>Project:</b> State Road 46	PE	STP State				
<b>Location:</b> Intersection of SR 46 and Smith Road		STP State				
<b>Description:</b> Intersection improvements	ROW	STP State				
<b>DES#:</b> 0100773	CON	STP State		\$ 224,000		
<b>Support:</b> Safety Improvements		STP State		\$ 56,000		
<b>Allied Projects:</b> n/a	<b>TOTAL</b>		\$ -	\$ 280,000	\$ -	\$ -





# Programmed Projects: State of Indiana

State of Indiana Projects		Funding Source	2009	2010	2011	2012
<b>Project:</b> State Road 37	PE	STP				
<b>Location:</b> NB/SB bridges over railroad, 3.65 mile south of SR 45		State				
<b>Description:</b> Bridge rehabilitation	ROW					
<b>DES#:</b> 0400322, 0400324	CON	STP	\$ 400,000			
<b>Support:</b> Bridge Preservation		State	\$ 100,000			
<b>Allied Projects:</b> n/a	<b>TOTAL</b>		\$ 500,000	\$ -	\$ -	



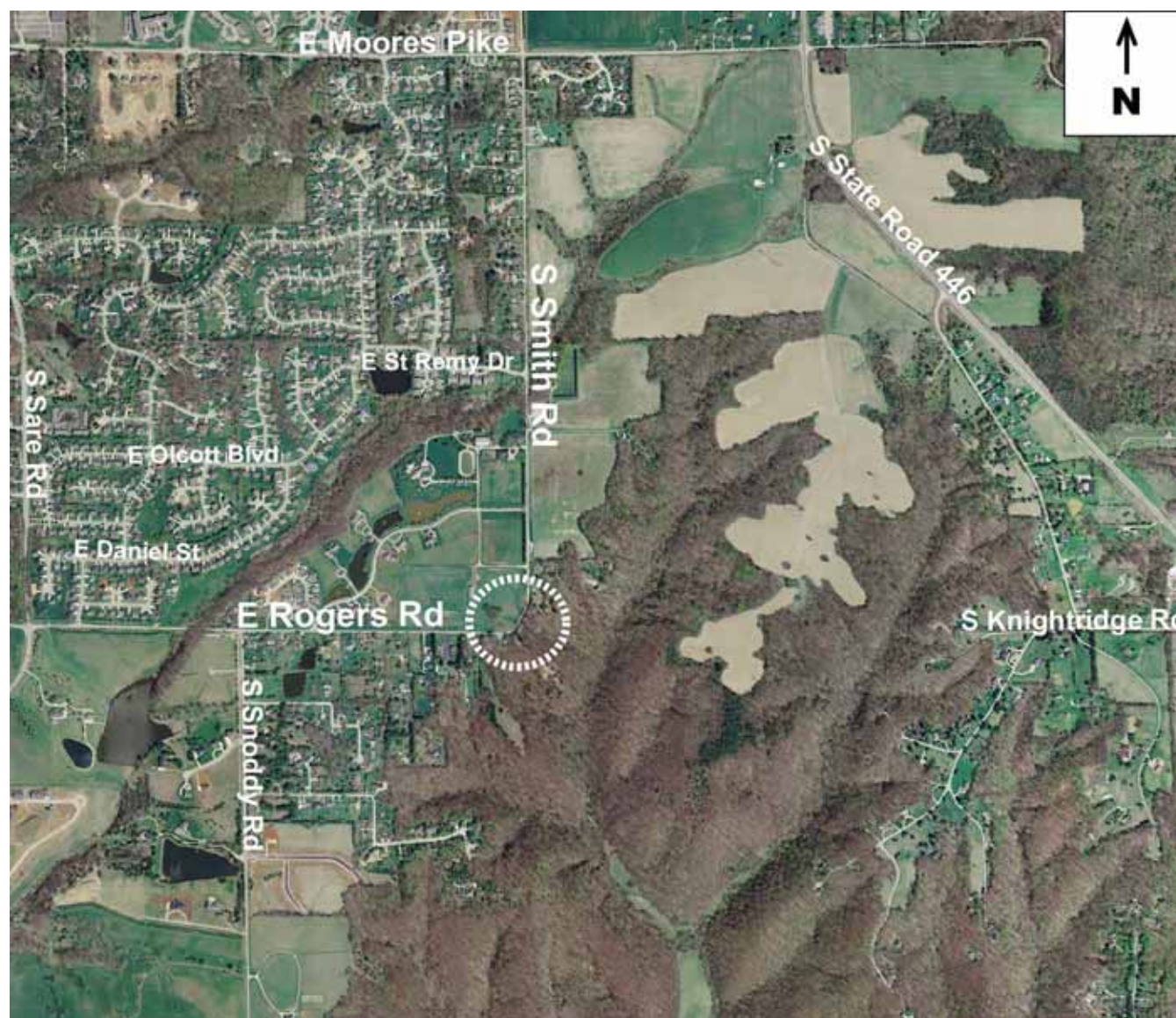
**Programmed Projects: State of Indiana****Summary of Programmed Expenditures:**

Funding Source	Fiscal Year				
	2009	2010	2011	2012	TOTAL
NHS	\$ -	\$ -		\$ -	\$ -
STP	\$ 21,462,901	\$ 1,352,000	\$ 3,994,482	\$ -	\$ 26,809,383
TE	\$ -	\$ -	\$ -	\$ -	\$ -
State	\$ 5,178,226	\$ 338,000	\$ 998,620	\$ -	\$ -
Local	\$ -	\$ -	\$ -	\$ -	\$ -
<b>TOTAL</b>	\$ 26,641,127	\$ 1,690,000	\$ 4,993,102	\$ -	\$ 26,809,383



## Programmed Projects: Monroe County

Monroe County Projects		Funding Source	Fiscal Year			
			2009	2010	2011	2012
<b>Project:</b> Rogers Road & Smith Road						
<b>Location:</b> Intersection of Rogers Road and Smith Road	PE					
<b>Description:</b> Curve realignment and reconstruction.	ROW					
<b>DES#:</b> 0600173	CON	HES	\$ 554,000			
<b>Support:</b> LRTP		STP	\$ 56,132			
		Local	\$ 103,568			
<b>Allied Projects:</b> n/a	<b>TOTAL</b>		\$ 713,700	\$ -	\$ -	\$ -





## Programmed Projects: Monroe County

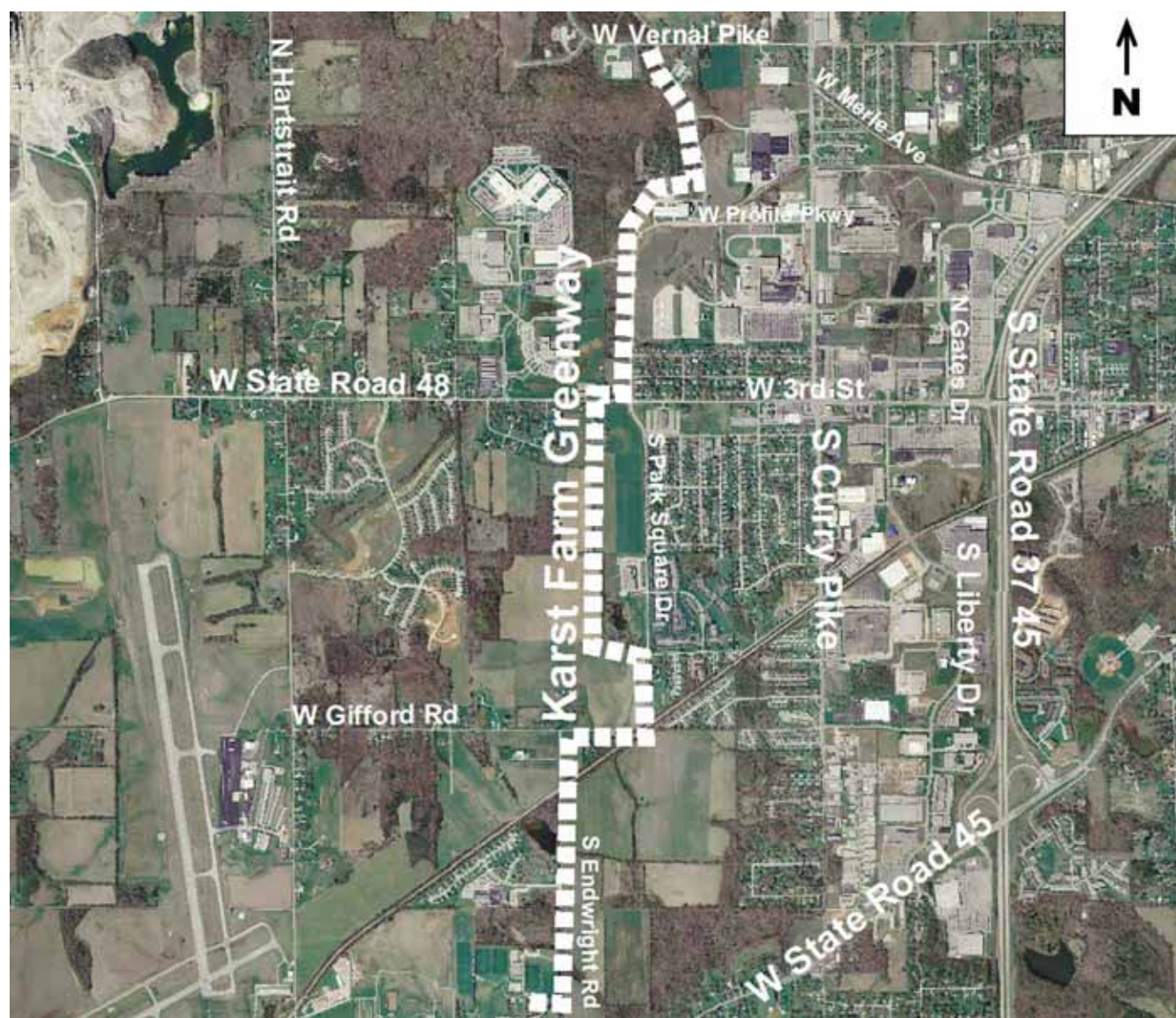
Monroe County Projects		Funding Source	Fiscal Year			
			2009	2010	2011	2012
<b>Project:</b> Vernal Pike (Phase II)	PE	Local				
<b>Location:</b> Curry Pike to Woodyard Road						
<b>Description:</b> Road reconstruction & safety improvements, including bituminous pavement, curb & gutter, sidewalk and drainage appurtenances. (~1.03 miles long)	ROW	Local				
<b>DES#:</b> 9485590	CON	STP	\$ 3,461,140			
<b>Support:</b> LRTP		Local	\$ 3,452,785			
<b>Allied Projects:</b> Vernal Pike (Phase I), Curry Pike	<b>TOTAL</b>		\$ 6,913,925	\$ -	\$ -	\$ -





# Programmed Projects: Monroe County

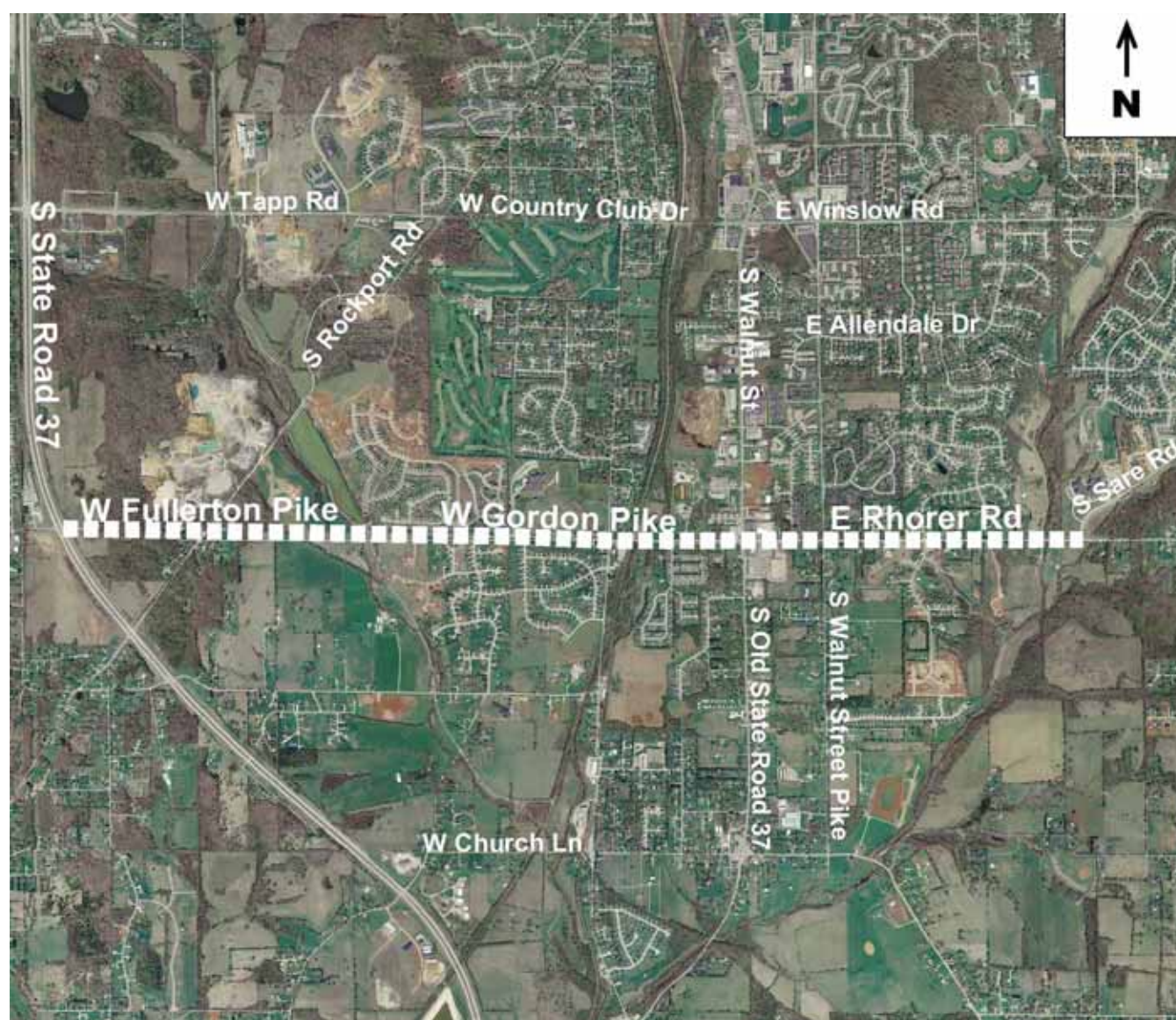
Monroe County Projects		Funding Source	Fiscal Year			
			2009	2010	2011	2012
<b>Project:</b> Karst Farm Greenway (Phase I)	PE	Local				
<b>Location:</b> South of Vernal Pike to Karst Farm Park						
<b>Description:</b> Preliminary engineering, Right-of-Way and construction of a multi-use trail for non-motorized use, including site amenities (~4.00 miles long)	ROW	Local	\$ 240,000			
<b>DES#:</b> 0600370	CON	TE		\$ 1,000,000		
<b>Support:</b> LRTP, MCATGSP, BATGSP, ERCP		Local		\$ 257,000		
<b>Allied Projects:</b> Ellettsville-Stinesville Trail, B-Line Trail	<b>TOTAL</b>		\$ 240,000	\$ 1,257,000	\$ -	\$ -





## Programmed Projects: Monroe County

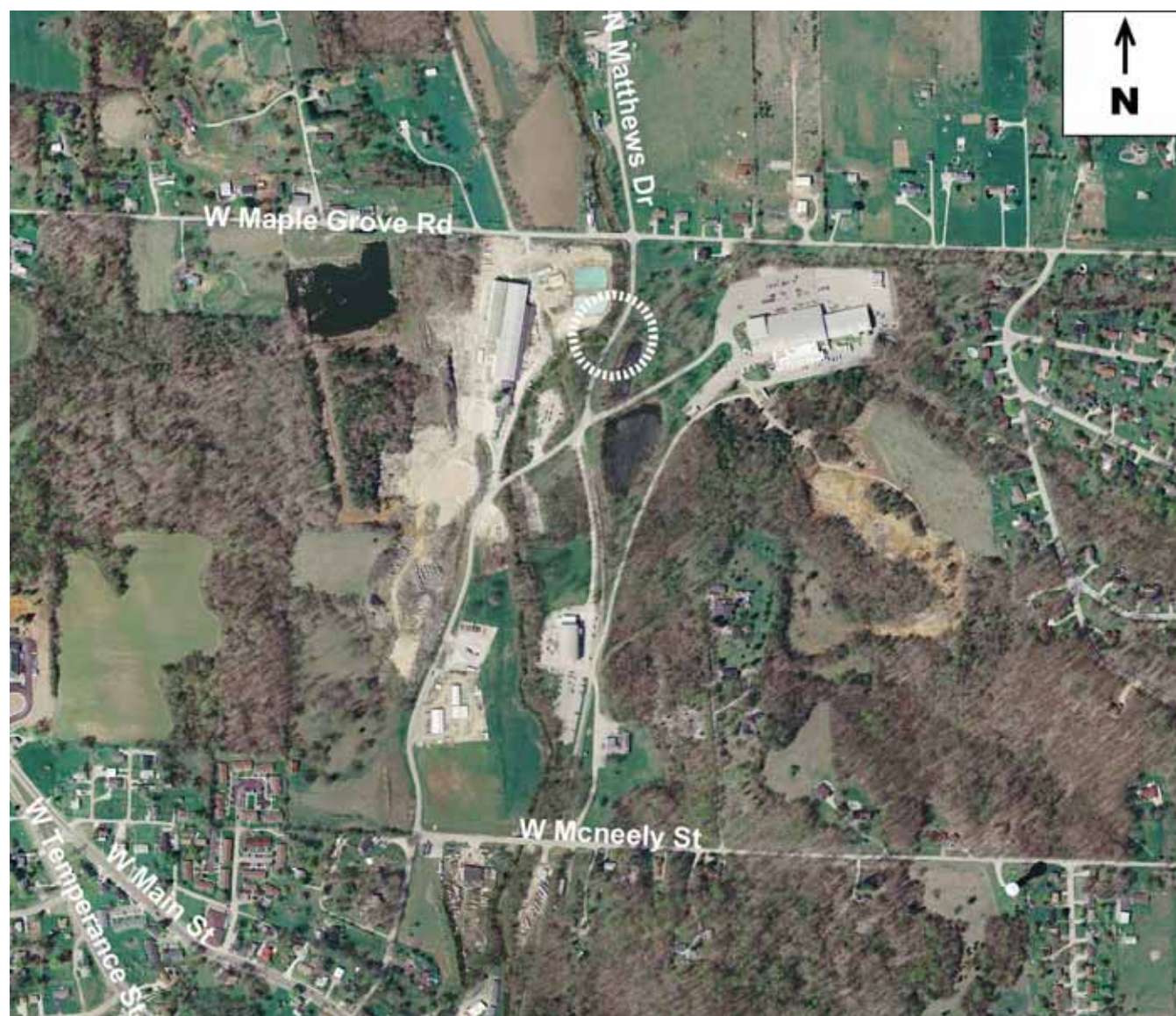
Monroe County Projects		Funding Source	Fiscal Year			
			2009	2010	2011	2012
<b>Project:</b> Fullerton Pike/Gordon Pike/Rhorer Rd.	PE	Local	\$ 550,000	\$ 550,000	\$ 550,000	\$ 108,000
<b>Location:</b> SR 37 to Sare Road						
<b>Description:</b> Road reconstruction and safety improvements, including bituminous pavement, curb, gutter, sidewalk, side path, bridges and drainage appurtenances. (~3.21 miles long)	ROW	Local				\$ 550,000
<b>DES#:</b> 0801059	CON					
<b>Support:</b> GPP, LRTP						
<b>Allied Projects:</b> SR 37/I-69, Sare Road	<b>TOTAL</b>		\$ 550,000	\$ 550,000	\$ 550,000	\$ 658,000





## Programmed Projects: Monroe County

Monroe County Projects		Funding Source	Fiscal Year			
			2009	2010	2011	2012
<b>Project:</b> Mt. Tabor Road Bridge #33	PE ROW CON	Local	\$ 50,000	\$ 50,000	\$ 50,000	\$ 25,000
<b>Location:</b> Over Jack's Defeat Creek, between McNeely Street & Maple Grove Road						
<b>Description:</b> Bridge replacement		Local				\$ 25,000
<b>DES#:</b> 0801060						
<b>Support:</b> Bridge Inventory & Safety Inspection, LRTP						
<b>Allied Projects:</b>		<b>TOTAL</b>	\$ 50,000	\$ 50,000	\$ 50,000	\$ 50,000





## Programmed Projects: Monroe County

Monroe County Projects		Funding Source	Fiscal Year			
			2009	2010	2011	2012
<b>Project:</b> Bridge Inventory (Phases I & II)	PE	Local		\$ 25,920		\$ 14,256
<b>Location:</b> Throughout Monroe County		BR		\$ 103,680		\$ 57,024
<b>Description:</b> Reinspection of all 137 structures over 20 feet in span length in accordance with the National Bridge Inspection Standards established by the Federal Highway Administration.	ROW					
<b>DES#:</b> Project No. BR-NBIS	CON					
<b>Support:</b> LRTP						
<b>Allied Projects:</b> n/a		<b>TOTAL</b>	\$ -	\$ 129,600	\$ -	\$ 71,280

## Programmed Projects: Monroe County Community School Corporation

Monroe County Community School Corporation Projects		Funding Source	Fiscal Year			
			2009	2010	2011	2012
<b>Project:</b> MCCSC Bike/Ped Education	SRTS					
<b>Location:</b> Various MCCSC & RBBCSC schools						
<b>Description:</b> Biking and walking campaigns at MCCSC and RBBCSC Schools; walking school bus; International Walk to School Day activities; & bicycle rodeos			\$ 75,000			
<b>DES#:</b> 0800012						
<b>Support:</b> MCATGSP						
<b>Allied Projects:</b> MCCSC Batchelor Middle School Project		<b>TOTAL</b>	\$ 75,000	\$ -	\$ -	\$ -

## Programmed Projects: Monroe County Community School Corporation

Monroe County Community School Corporation Projects		Funding Source	Fiscal Year			
			2009	2010	2011	2012
<b>Project:</b> MCCSC Batchelor Middle Infrastructure						
<b>Location:</b> Batchelor Middle School property and adjacent roads (Rogers Street & Gordon Pike)	PE	SRTS	\$ 10,000			
<b>Description:</b> 700 ft of sidewalk and improved crossings on Gordon Pike and Rogers Street	ROW					
<b>DES#:</b> 0710204	CON	SRTS	\$ 50,000			
<b>Support:</b> MCATGSP						
<b>Allied Projects:</b> MCCSC Non-Infrastructure Project	<b>TOTAL</b>		\$ 60,000	\$ -	\$ -	\$ -



# **Programmed Projects: Monroe County & Monroe County Community School Corporation**

## **Summary of Programmed Expenditures:**

Funding Source	Fiscal Year				
	2009	2010	2011	2012	TOTAL
TEA-21	\$ -	\$ -	\$ -	\$ -	\$ -
STP	\$ 3,517,272	\$ -	\$ -	\$ -	\$ 3,517,272
State	\$ -	\$ -	\$ -	\$ -	\$ -
TE	\$ -	\$ 1,000,000	\$ -	\$ -	\$ 1,000,000
SRTS	\$ 135,000	\$ -	\$ -	\$ -	\$ 135,000
HSIP	\$ 554,000	\$ -	\$ -	\$ -	\$ 554,000
Bridge	\$ -	\$ 103,680	\$ -	\$ 57,024	\$ 160,704
FTA 5307/5309	\$ -	\$ -	\$ -	\$ -	\$ -
FTA 5310	\$ -	\$ -	\$ -	\$ -	\$ -
FTA 5311	\$ -	\$ -	\$ -	\$ -	\$ -
FTA 5316	\$ -	\$ -	\$ -	\$ -	\$ -
FTA 5317	\$ -	\$ -	\$ -	\$ -	\$ -
PMTF	\$ -	\$ -	\$ -	\$ -	\$ -
Farebox	\$ -	\$ -	\$ -	\$ -	\$ -
Local	\$ 4,396,353	\$ 882,920	\$ 600,000	\$ 722,256	\$ 6,601,529
<b>TOTAL</b>	<b>\$ 8,602,625</b>	<b>\$ 1,986,600</b>	<b>\$ 600,000</b>	<b>\$ 779,280</b>	<b>\$ 11,968,505</b>



## Programmed Projects: City of Bloomington

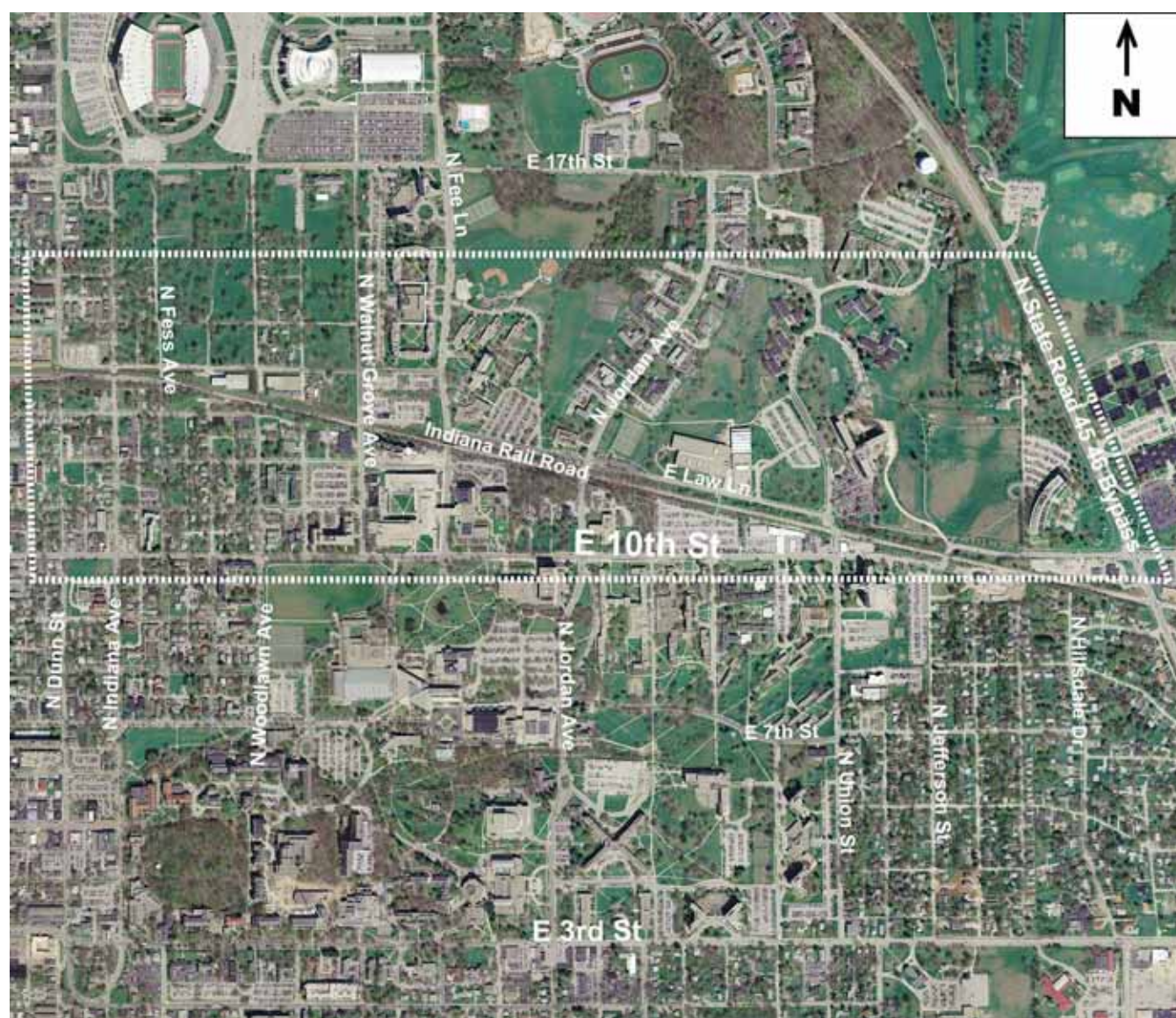
City of Bloomington Projects		Funding Source	Fiscal Year			
			2009	2010	2011	2012
<b>Project:</b> West 3rd Street	PE					
<b>Location:</b> State Road 37 to Landmark Avenue						
<b>Description:</b> Road reconstruction, channelized intersections, drainage improvements, sidewalks/sidepath, landscaping and signalization. (~.90 miles long)	ROW	TEA-21	\$ 1,586,767			
		Bond	\$ 1,232,705			
<b>DES#:</b> 0300766	CON	STP		\$ 1,756,421	\$ 607,000	
<b>Support:</b> LRTP, GPP, BATGSP		Bond	\$ 1,245,600	\$ 2,818,088	\$ 319,000	
<b>Allied Projects:</b> n/a		<b>TOTAL</b>	\$ 4,065,072	\$ 4,574,509	\$ 926,000	\$ -





## Programmed Projects: City of Bloomington

City of Bloomington Projects		Funding Source	Fiscal Year			
			2009	2010	2011	2012
<b>Project:</b> North Campus Area Study	PE	TEA-21	\$ 60,000			
<b>Location:</b> Dunn Street to State Road 45/46 Bypass		Local	\$ 15,000			
<b>Description:</b> Area study to evaluate current and future transportation conditions for all modes of travel within the study area (refer to 2009-2010 UPWP).	ROW					
<b>DES#:</b> 0400319	CON					
<b>Support:</b> LRTP						
<b>Allied Projects:</b> n/a		<b>TOTAL</b>	\$ 75,000	\$ -	\$ -	\$ -





## Programmed Projects: City of Bloomington

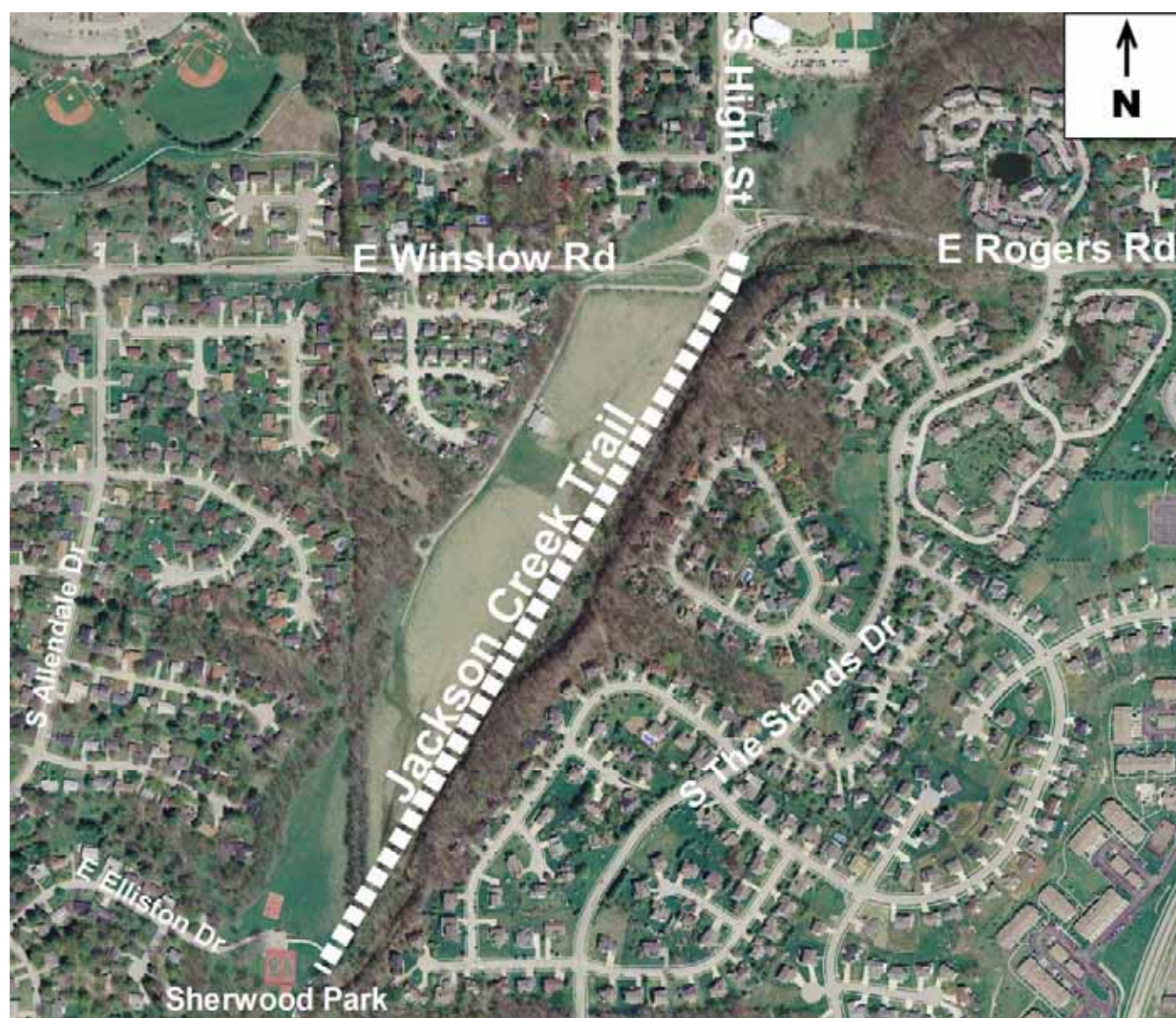
City of Bloomington Projects		Funding Source	Fiscal Year			
			2009	2010	2011	2012
<b>Project:</b> SR 45/46 Pedestrian Overpass	PE					
<b>Location:</b> Intersection of 10th Street & SR 45/46 Bypass						
<b>Description:</b> Construction of new pedestrian overpass to facilitate crossing of upgraded State Road 45/46 Bypass.	ROW	State	\$ 200,000			
<b>DES#:</b> 9968230	CON	STP				
<b>Support:</b> LRTP, GPP, BATGSP		Local				
<b>Allied Projects:</b> State Road 45/46 Bypass		<b>TOTAL</b>	\$ 200,000	\$ -	\$ -	\$ -





## Programmed Projects: City of Bloomington

City of Bloomington Projects		Funding Source	Fiscal Year			
			2009	2010	2011	2012
<b>Project:</b> Jackson Creek Trail (Phase I)	PE	Local	\$ 114,300			
<b>Location:</b> Adjacent to Jackson Creek, Rogers Road to Sherwood Oaks Park						
<b>Description:</b> Site acquisition, design and construction of a multi-use trail for non-motorized use, including site amenities.	ROW					
<b>DES#:</b> 0200987	CON	TE	\$ 500,000			
<b>Support:</b> LRTP, GPP, BATGSP, PMP		Local	\$ 14,050			
<b>Allied Projects:</b> Clear Creek Trail, Bloomington Rail Trail		<b>TOTAL</b>	\$ 628,350	\$ -	\$ -	\$ -





## Programmed Projects: City of Bloomington

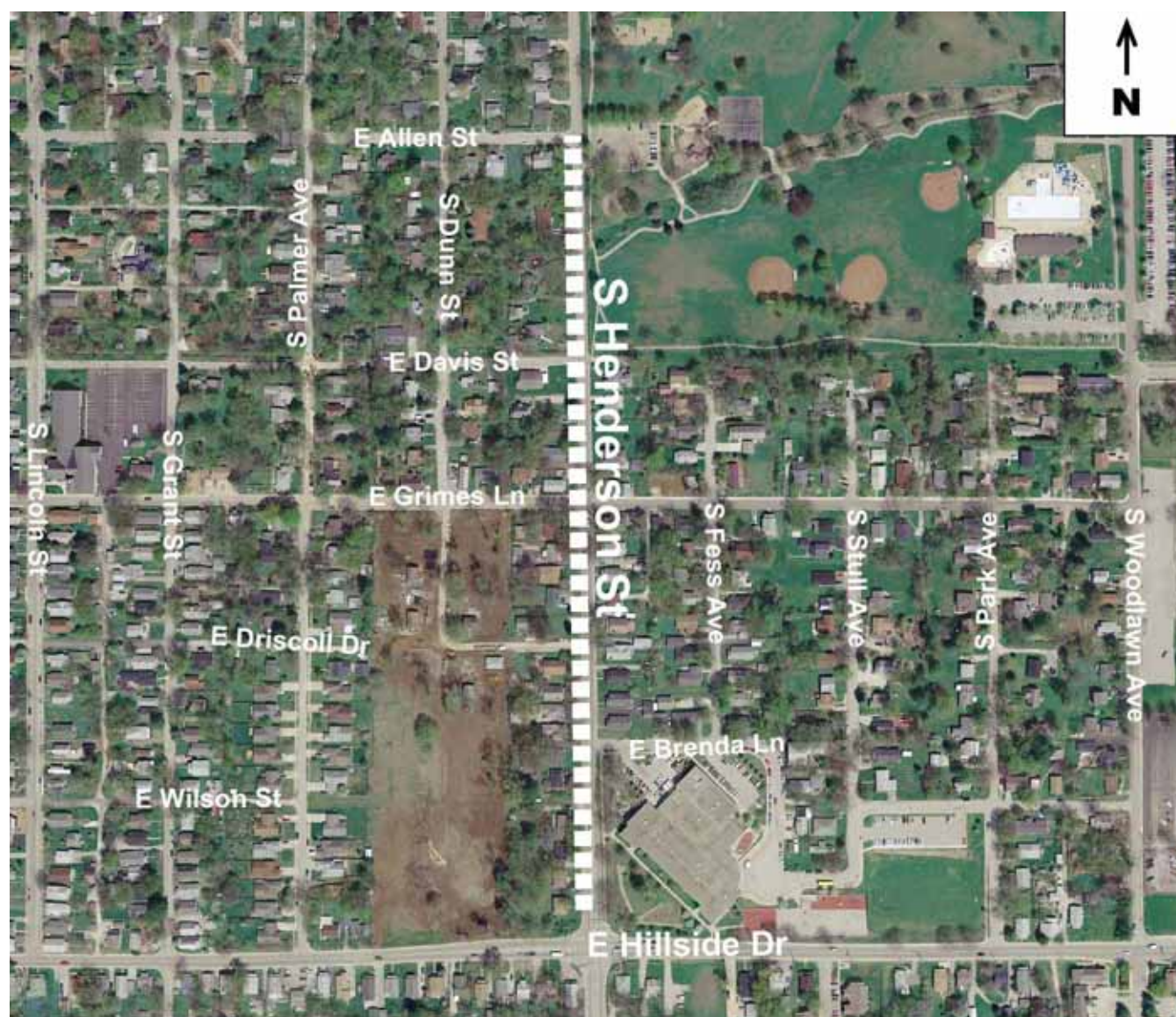
City of Bloomington Projects		Funding Source	Fiscal Year			
			2009	2010	2011	2012
<b>Project:</b> Atwater/Henderson Signal	PE	Local	\$ 103,000			
<b>Location:</b> Intersection of Atwater & Henderson						
<b>Description:</b> Intersection safety improvements and installation of traffic signal	ROW	Local	\$ 40,000			
<b>DES#:</b> To be Assigned	CON	Local		\$ 30,000		
<b>Support:</b> Crash Report						
<b>Allied Projects:</b>		<b>TOTAL</b>	\$ 143,000	\$ 30,000	\$ -	\$ -





## Programmed Projects: City of Bloomington

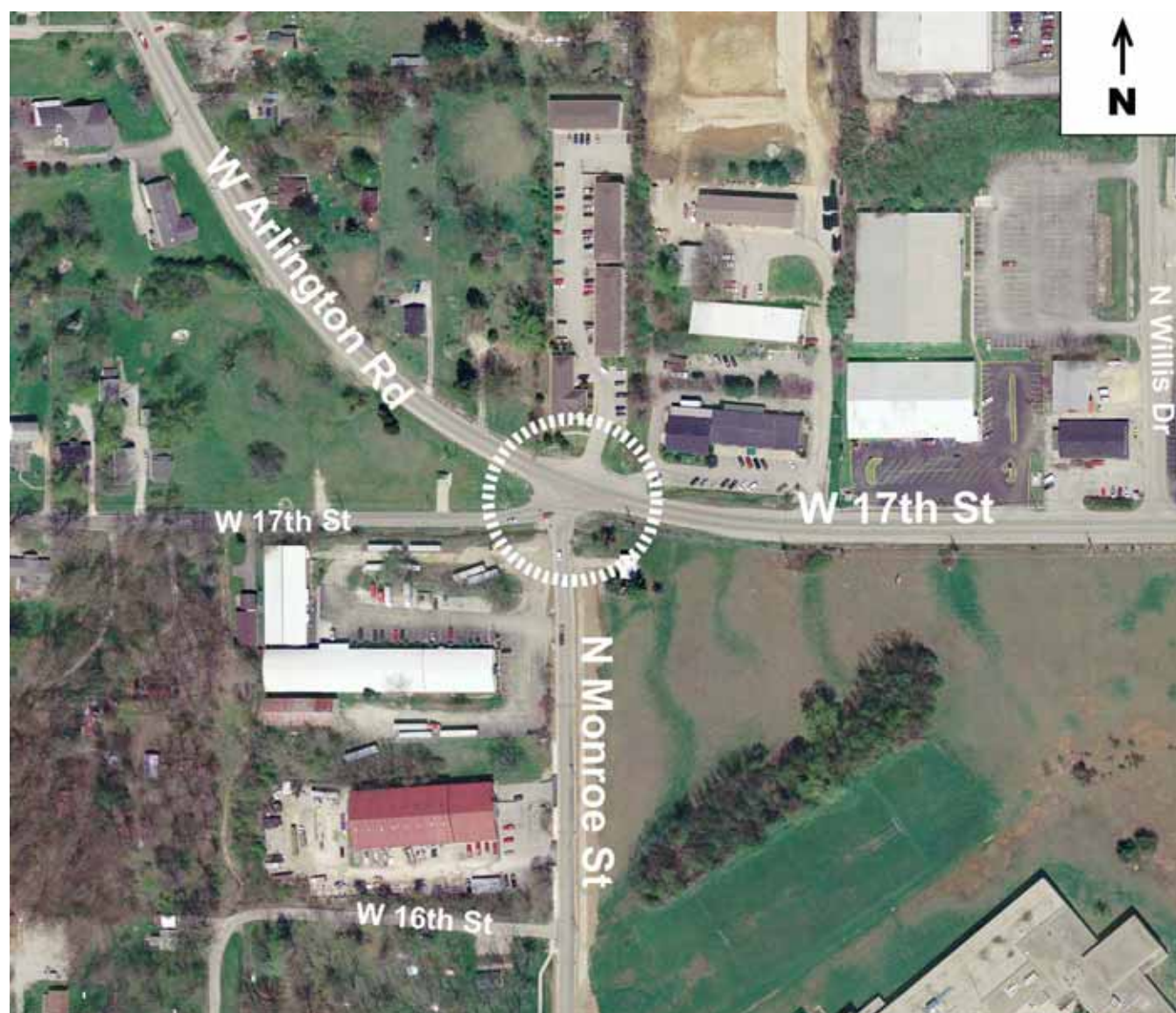
City of Bloomington Projects		Funding Source	Fiscal Year			
			2009	2010	2011	2012
<b>Project:</b> Sidewalk Construction						
<b>Location:</b> Henderson Street between Hillside Drive and Allen Street	PE					
<b>Description:</b> Safe Routes to School sidewalk construction project to improve safety for children walking to Templeton School	ROW					
<b>DES#:</b> 0800014, 0800041	CON	SRTS	\$ 250,000			
<b>Support:</b> BATGSP		Local	\$ 420,000			
<b>Allied Projects:</b>	<b>TOTAL</b>		\$ 670,000	\$ -	\$ -	\$ -





## Programmed Projects: City of Bloomington

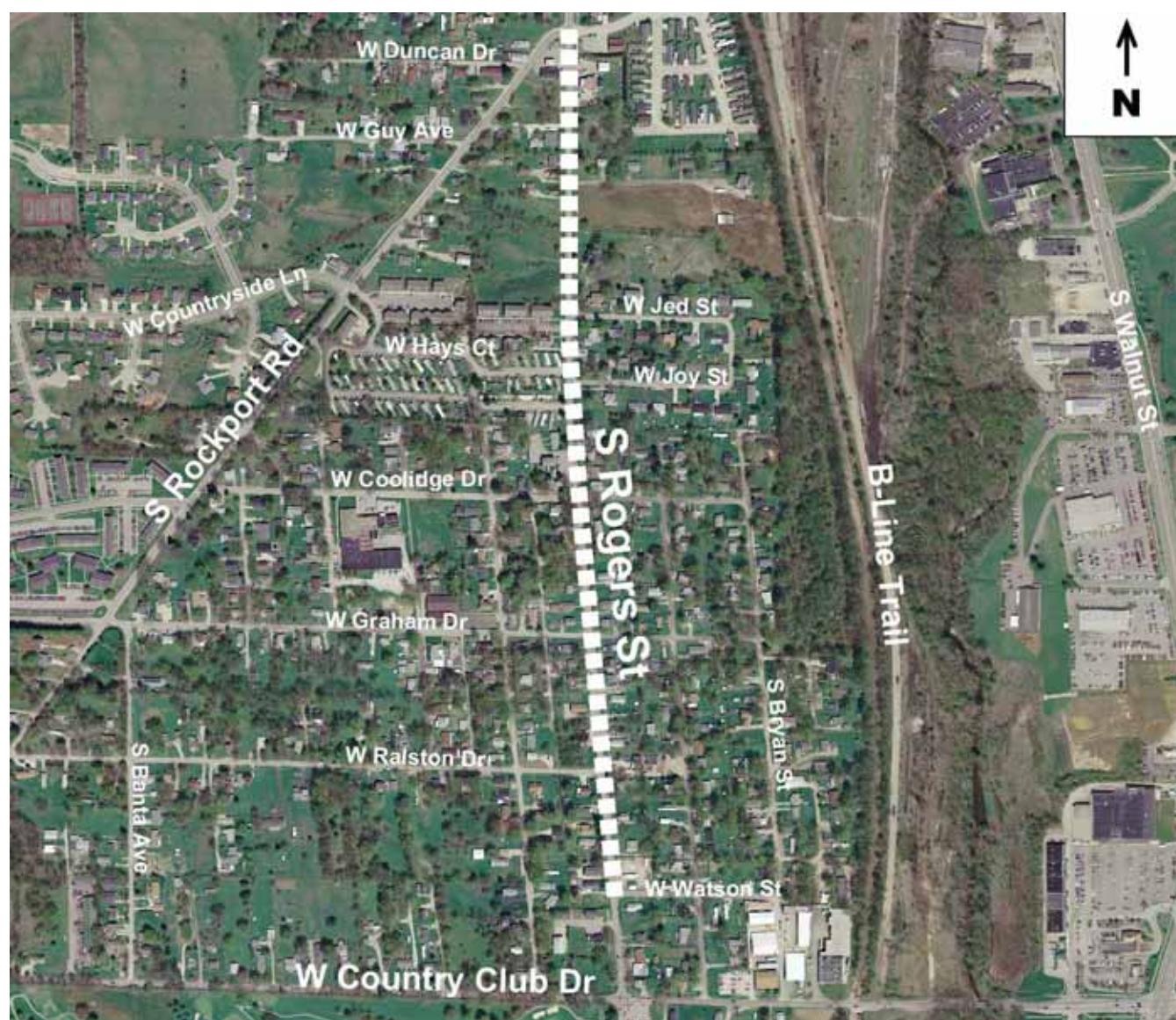
City of Bloomington Projects		Funding Source	Fiscal Year			
			2009	2010	2011	2012
<b>Project:</b> Roundabout Construction		PE		\$ 200,000		
<b>Location:</b> Intersection of Arlington Road, 17th Street and Monroe Street		Local		\$ 50,000		
<b>Description:</b> Construction of a roundabout to serve this intersection of three streets to improve safety and facilitate better traffic flow		STP			\$ 700,000	
		Local			\$ 175,000	
<b>DES#:</b> To be Assigned		CON				\$ 2,500,000
<b>Support:</b> BATGSP		Local				\$ 625,000
<b>Allied Projects:</b>		<b>TOTAL</b>	\$ -	\$ 250,000	\$ 875,000	\$ 3,125,000





## Programmed Projects: City of Bloomington

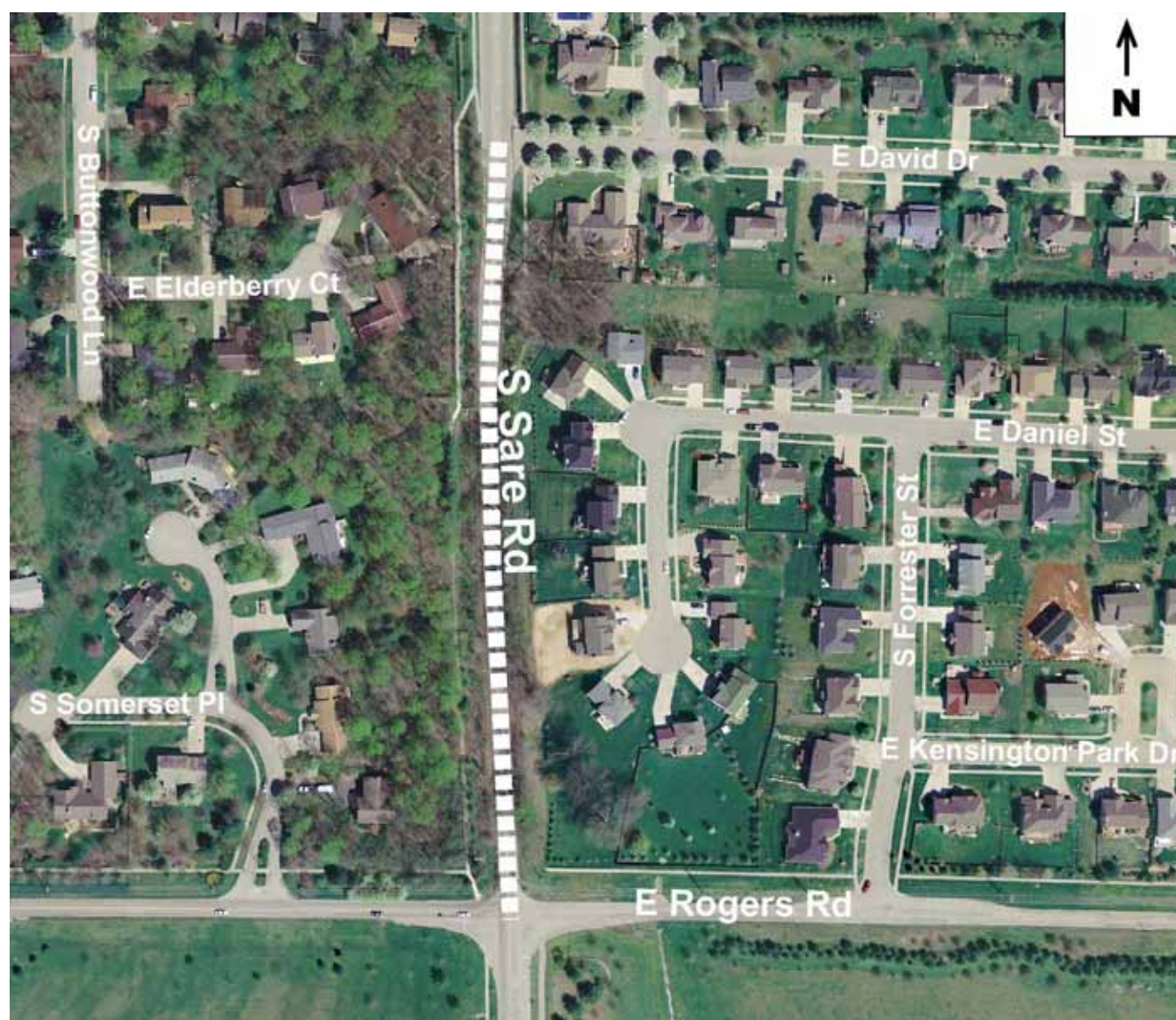
City of Bloomington Projects		Funding Source	Fiscal Year			
			2009	2010	2011	2012
<b>Project:</b> Rogers Street	<b>Location:</b> Rockport Road to Watson Street	PE				
<b>Description:</b> Safety improvements, including bituminous pavement, curb & gutter, drainage appurtenances and improvements, construction of sidewalk and a sidepath. (~.61 miles long)						
<b>DES#:</b> 0600496	<b>Support:</b> LRTP, GPP, BATGSP	ROW		\$ 584,000 \$ 146,000		
		CON			\$ 500,000 \$ 125,000	
<b>Allied Projects:</b> B-Line Trail		<b>TOTAL</b>	\$ -	\$ 730,000	\$ 625,000	\$ -





## Programmed Projects: City of Bloomington

City of Bloomington Projects		Funding Source	Fiscal Year			
			2009	2010	2011	2012
<b>Project:</b> Sare Road (Phase I)	PE	Local	\$ 20,000	\$ 20,000		
<b>Location:</b> Rogers Road to David Drive						
<b>Description:</b> Road reconstruction, channelized intersections, roundabout construction at Rogers Road intersection, drainage, sidewalks/sidepath, and landscaping. (~.18 miles long)	ROW	Local		\$ 75,000		
<b>DES#:</b> To Be Assigned	CON	STP			\$ 720,000	
<b>Support:</b> LRTP, GPP, BATGSP		Local			\$ 180,000	
<b>Allied Projects:</b> n/a		<b>TOTAL</b>	\$ 20,000	\$ 95,000	\$ 900,000	\$ -





## Programmed Projects: City of Bloomington

City of Bloomington Projects		Funding Source	Fiscal Year			
			2009	2010	2011	2012
<b>Project:</b> Sare Road (Phase II)						
<b>Location:</b> McCartney Lane to 400 feet south of Moores Pike	PE					
<b>Description:</b> Road reconstruction, channelized intersections, drainage, sidewalks/sidepath, landscaping. (~.39 miles long)	ROW	Local		\$ 75,000		
<b>DES#:</b> N/A - LOCAL FUNDING ONLY	CON					
<b>Support:</b> LRTP, GPP, ATGSP						
<b>Allied Projects:</b> n/a		<b>TOTAL</b>	\$ -	\$ 75,000	\$ -	\$ -



## Programmed Projects: City of Bloomington

City of Bloomington Projects		Funding Source	Fiscal Year			
			2009	2010	2011	2012
<b>Project:</b> Tapp Road (Phase III)						
<b>Location:</b> Existing 4-lane section of Tapp Road to 200 feet east of Weimer Road	PE					
<b>Description:</b> Road reconstruction, widen to 4 lanes with channelized intersections, wiring for future signalization, sidewalk/sidepath, possible bike lanes, landscaping, drainage facilities. (~.21 miles long)	ROW	TIF			\$ 225,000	
	CON	TIF			\$ 2,935,000	
<b>DES#:</b> N/A - LOCAL FUNDING ONLY						
<b>Support:</b> LRTP, GPP, BATGSP						
<b>Allied Projects:</b> Tapp Road (Phase II)	<b>TOTAL</b>		\$ -	\$ -	\$ 3,160,000	\$ -





## Programmed Projects: City of Bloomington

City of Bloomington Projects		Funding Source	Fiscal Year			
			2009	2010	2011	2012
<b>Project:</b> Weimer Road Realignment	PE					
<b>Location:</b> Tapp Road to Wapehani Road						
<b>Description:</b> Realignment of Weimer Road to the west of the existing intersection with Tapp Road. (~.50 miles long)	ROW					
<b>DES#:</b> N/A - LOCAL FUNDING ONLY	CON	TIF			\$ 2,057,189	
<b>Support:</b> LRTP						
<b>Allied Projects:</b> Tapp Road (Phase III)		<b>TOTAL</b>	\$ -	\$ -	\$ 2,057,189	\$ -



**Programmed Projects: City of Bloomington****Summary of Programmed Expenditures:**

Funding Source	Fiscal Year				
	2009	2010	2011	2012	TOTAL
TEA-21	\$ 1,646,767	\$ -	\$ -	\$ -	\$ 1,646,767
STP	\$ -	\$ 2,540,421	\$ 2,527,000	\$ 2,500,000	\$ 7,567,421
State	\$ 200,000	\$ -	\$ -	\$ -	\$ 200,000
TE	\$ 500,000	\$ -	\$ -	\$ -	\$ 500,000
SRTS	\$ 250,000	\$ -	\$ -	\$ -	\$ 250,000
HSIP	\$ -	\$ -	\$ -	\$ -	\$ -
Bridge	\$ -	\$ -	\$ -	\$ -	\$ -
FTA 5307/5309	\$ -	\$ -	\$ -	\$ -	\$ -
FTA 5310	\$ -	\$ -	\$ -	\$ -	\$ -
FTA 5311	\$ -	\$ -	\$ -	\$ -	\$ -
FTA 5316	\$ -	\$ -	\$ -	\$ -	\$ -
FTA 5317	\$ -	\$ -	\$ -	\$ -	\$ -
PMTF	\$ -	\$ -	\$ -	\$ -	\$ -
Farebox	\$ -	\$ -	\$ -	\$ -	\$ -
Local	\$ 3,204,655	\$ 3,214,088	\$ 6,016,189	\$ 625,000	\$ 13,059,932
<b>TOTAL</b>	<b>\$ 5,801,422</b>	<b>\$ 5,754,509</b>	<b>\$ 8,543,189</b>	<b>\$ 3,125,000</b>	<b>\$ 23,224,120</b>



# Programmed Projects: Town of Ellettsville

Town of Ellettsville Projects		Funding Source	Fiscal Year			
			2009	2010	2011	2012
<b>Project:</b> Ellettsville Trail	PE					
<b>Location:</b>						
<b>Description:</b> Site acquisition and construction of a multi-use trail for non-motorized use, including site amenities.	ROW					
<b>DES#:</b> 0301167	CON	TE	\$ 169,610			
<b>Support:</b> n/a		Local	\$ 42,403			
<b>Allied Projects:</b> B-Line Trail, Ellettsville-Stinesville Trail		<b>TOTAL</b>	\$ 212,013	\$ -	\$ -	\$ -

## Programmed Projects: Richland-Bean Blossom Community School Corporation

Richland-Bean Blossom Com. School Corp. Projects		Funding Source	Fiscal Year			
			2009	2010	2011	2012
<b>Project:</b> RBBCSC Sidewalk Construction						
<b>Location:</b> Reeves Rd./Sale St., Edgewood Dr., Ridge Springs Ln.	PE	SRTS	\$ 33,000			
<b>Description:</b> Construction of sidewalks along Reeves Rd./Sale St., Edgewood Dr., and Ridge Springs Ln. to connect the Edgewood campus w/ surrounding neighborhoods	ROW	SRTS	\$ 32,619			
	CON	SRTS	\$ 184,381			
<b>DES#:</b> 0800021						
<b>Support:</b> n/a						
<b>Allied Projects:</b> B-Line Trail, Ellettsville-Stinesville Trail		<b>TOTAL</b>	\$ 250,000	\$ -	\$ -	\$ -



# **Programmed Projects: Town of Ellettsville & Richland-Bean Blossom Community School Corporation**

## **Summary of Programmed Expenditures:**

Funding Source	Fiscal Year				
	2009	2010	2011	2012	TOTAL
TEA-21	\$ -	\$ -	\$ -	\$ -	\$ -
STP	\$ -	\$ -	\$ -	\$ -	\$ -
State	\$ -	\$ -	\$ -	\$ -	\$ -
TE	\$ 169,610	\$ -	\$ -	\$ -	\$ 169,610
SRTS	\$ 250,000	\$ -	\$ -	\$ -	\$ 250,000
HSIP	\$ -	\$ -	\$ -	\$ -	\$ -
Bridge	\$ -	\$ -	\$ -	\$ -	\$ -
FTA 5307/5309	\$ -	\$ -	\$ -	\$ -	\$ -
FTA 5310	\$ -	\$ -	\$ -	\$ -	\$ -
FTA 5311	\$ -	\$ -	\$ -	\$ -	\$ -
FTA 5316	\$ -	\$ -	\$ -	\$ -	\$ -
FTA 5317	\$ -	\$ -	\$ -	\$ -	\$ -
PMTF	\$ -	\$ -	\$ -	\$ -	\$ -
Farebox	\$ -	\$ -	\$ -	\$ -	\$ -
Local	\$ 42,403	\$ -	\$ -	\$ -	\$ 42,403
<b>TOTAL</b>	\$ 462,013	\$ -	\$ -	\$ -	\$ 462,013



## Programmed Projects: Rural Transit

Rural Transit Projects		Fiscal Year			
		2009	2010	2011	2012
<b>Project:</b> Operating Budget	FTA 5311	\$ 567,020	\$ 580,000	\$ 600,000	\$ 640,000
<b>Description:</b> Operating budget assistance.	Local&PMTF	\$ 594,690	\$ 670,000	\$ 800,000	\$ 1,010,000
<b>DES#:</b> n/a					
<b>Support:</b> Coordinated Plan	<b>TOTAL</b>	\$ 1,161,710	\$ 1,250,000	\$ 1,400,000	\$ 1,650,000
<b>Project:</b> Operating Assistance	FTA 5316	\$ 30,800			
<b>Description:</b> Operating budget to augment service for job access and persons with disabilities	FTA 5317	\$ 30,800			
	Local	\$ 70,425			
<b>DES#:</b>					
<b>Support:</b> Coordinated Plan	<b>TOTAL</b>	\$ 132,025	\$ -	\$ -	\$ -
<b>Project:</b> Capital Budget	FTA 5311	\$ 94,000	\$ 96,000	\$ 97,600	\$ 99,200
<b>Description:</b> Capital budget assistance. Replace 2 light transit vehicles w/lift, radios, & emergency equip. each year. Larger vehicle in 2012. Repeater station for mobile radios in 2008.	Local&PMTF	\$ 23,500	\$ 24,000	\$ 24,400	\$ 24,800
<b>DES#:</b> n/a					
<b>Support:</b> Coordinated Plan	<b>TOTAL</b>	\$ 117,500	\$ 120,000	\$ 122,000	\$ 124,000
<b>Project:</b> Capital Assistance	FTA 5316	\$ 30,400			
<b>Description:</b> Purchase of 2 diesel light transit vehicles to augment service for job access and persons with disabilities	FTA 5317	\$ 30,400			
	Local	\$ 53,200			
<b>DES#:</b> n/a					
<b>Support:</b> Coordinated Plan	<b>TOTAL</b>	\$ 114,000	\$ -	\$ -	\$ -
<b>Project:</b> Capital Equipment	FTA 5310	\$ 160,000			
<b>Description:</b> Replacement of 4 vehicles with over 250,000 miles	Local	\$ 40,000			
<b>DES#:</b> n/a					
<b>Support:</b> Coordinated Plan	<b>TOTAL</b>	\$ 200,000	\$ -	\$ -	\$ -

**Programmed Projects: Rural Transit****Summary of Programmed Expenditures:**

Funding Source	Fiscal Year				
	2009	2010	2011	2012	TOTAL
TEA-21	\$ -	\$ -	\$ -	\$ -	\$ -
STP	\$ -	\$ -	\$ -	\$ -	\$ -
State	\$ -	\$ -	\$ -	\$ -	\$ -
TE	\$ -	\$ -	\$ -	\$ -	\$ -
SRTS	\$ -	\$ -	\$ -	\$ -	\$ -
HSIP	\$ -	\$ -	\$ -	\$ -	\$ -
Bridge	\$ -	\$ -	\$ -	\$ -	\$ -
FTA 5307/09	\$ -	\$ -	\$ -	\$ -	\$ -
FTA 5310	\$ 160,000	\$ -	\$ -	\$ -	\$ 160,000
FTA 5311	\$ 661,020	\$ 676,000	\$ 697,600	\$ 739,200	\$ 2,773,820
FTA 5316	\$ 61,200	\$ -	\$ -	\$ -	\$ 61,200
FTA 5317	\$ 61,200	\$ -	\$ -	\$ -	\$ 61,200
PMTF	\$ -	\$ -	\$ -	\$ -	\$ -
Farebox	\$ -	\$ -	\$ -	\$ -	\$ -
Local	\$ 781,815	\$ 694,000	\$ 824,400	\$ 1,034,800	\$ 3,335,015
TOTAL	\$ 1,725,235	\$ 1,370,000	\$ 1,522,000	\$ 1,774,000	\$ 6,391,235

## Programmed Projects: Bloomington Transit

Bloomington Transit Projects		Fiscal Year			
		2009	2010	2011	2012
<b>Project:</b> Operational Assistance	FTA 5307	\$ 936,000	\$ 973,440	\$ 1,012,378	\$ 1,052,873
<b>Description:</b> Federal, State and Local Assistance for the operation of BT's fixed route & Access Service including late weeknight servic.	FTA 5316	\$ 208,000	\$ 216,320	\$ 224,973	\$ 233,972
	FTA 5317	\$ 26,000	\$ 27,040	\$ 28,122	\$ 29,246
	PMTF	\$ 2,052,272	\$ 2,134,363	\$ 2,219,737	\$ 2,308,527
	Local	\$ 1,742,000	\$ 1,811,680	\$ 1,884,147	\$ 1,959,513
<b>DES#:</b> n/a	Fares	\$ 1,185,600	\$ 1,233,024	\$ 1,282,345	\$ 1,333,639
<b>Support:</b> LRTP, GPP, TDP	<b>TOTAL</b>	\$ 6,149,872	\$ 6,395,867	\$ 6,651,702	\$ 6,917,770
<b>Project:</b> 35 Foot Buses	FTA 5307	\$ 816,000			
<b>Description:</b> Purchase of new 35-foot buses.	Local	\$ 204,000			
<b>DES#:</b> n/a					
<b>Support:</b> LRTP, TDP	<b>TOTAL</b>	\$ 1,020,000	\$ -	\$ -	\$ -
<b>Project:</b> 25 Foot Buses	FTA 5307			\$ 60,000	\$ 62,400
<b>Description:</b> Purchase of new 25-foot buses.	Local			\$ 15,000	\$ 15,600
<b>DES#:</b> n/a					
<b>Support:</b> LRTP, TDP	<b>TOTAL</b>	\$ -	\$ -	\$ 75,000	\$ 78,000
<b>Project:</b> 40 Foot Buses	FTA 5307	\$ 560,000	\$ 291,200		
<b>Description:</b> Purchase of 40 foot buses	Local	\$ 140,000	\$ 72,800		
<b>DES#:</b> n/a					
<b>Support:</b> LRTP, TDP	<b>TOTAL</b>	\$ 700,000	\$ 364,000	\$ -	\$ -
<b>Project:</b> BT Access Vehicles	FTA 5307	\$ 67,492	\$ 70,192	\$ 72,999	\$ 75,919
<b>Description:</b> Capitalize BT Access vehicles for use in Paratransit service.	Local	\$ 16,873	\$ 17,548	\$ 18,250	\$ 18,980
<b>DES#:</b> n/a					
<b>Support:</b> LRTP, TDP	<b>TOTAL</b>	\$ 84,365	\$ 87,740	\$ 91,249	\$ 94,899
<b>Project:</b> Downtown Transfer Facility	FTA 5309	\$ <b>5,326,198</b>			
<b>Description:</b> Environmental assessment, land acquisition, architectural design & engineering, and construction of Downtown Transfer Facility.	Local	\$ 1,331,550			
<b>DES#:</b> n/a					
<b>Support:</b> LRTP, GPP, TDP	<b>TOTAL</b>	\$ 6,657,748	\$ -	\$ -	\$ -
<b>Project:</b> Passenger Shelters	FTA 5307		\$ 21,600		\$ 23,363
<b>Description:</b> Purchase of passenger shelter for BT stops.	Local		\$ 5,400		\$ 5,841
<b>DES#:</b> n/a					
<b>Support:</b> LRTP, GPP, TDP	<b>TOTAL</b>	\$ -	\$ 27,000	\$ -	\$ 29,203

**Note:** The figure in bold represents a total of four earmarks from 2006, 2007, 2008, & 2009



## Programmed Projects: Bloomington Transit

Bloomington Transit Projects		Fiscal Year			
		2009	2010	2011	2012
<b>Project:</b> Fare Collection Equipment	FTA 5307	\$ 344,000			
<b>Description:</b> Upgrade and/or replace fare collection equipment.	Local	\$ 86,000			
<b>DES#:</b> n/a					
<b>Support:</b> LRTP, TDP	<b>TOTAL</b>	\$ 430,000	\$ -	\$ -	\$ -

<b>Project:</b> Maintenance	FTA 5307	\$ 61,868	\$ 64,343	\$ 66,916	\$ 69,593
<b>Description:</b> Capitalize the purchase of engine/transmission rebuilds & tires.	Local	\$ 14,872	\$ 15,467	\$ 16,086	\$ 16,729
<b>DES#:</b> n/a					
<b>Support:</b> LRTP, TDP	<b>TOTAL</b>	\$ 76,740	\$ 79,810	\$ 83,002	\$ 86,322

## Programmed Projects: Bloomington Transit

### Summary of Programmed Expenditures:

Funding Source	Fiscal Year				
	2009	2010	2011	2012	TOTAL
TEA-21	\$ -	\$ -	\$ -	\$ -	\$ -
STP	\$ -	\$ -	\$ -	\$ -	\$ -
State	\$ -	\$ -	\$ -	\$ -	\$ -
TE	\$ -	\$ -	\$ -	\$ -	\$ -
SRTS	\$ -	\$ -	\$ -	\$ -	\$ -
HSIP	\$ -	\$ -	\$ -	\$ -	\$ -
Bridge	\$ -	\$ -	\$ -	\$ -	\$ -
FTA 5307/5309	\$ 8,111,558	\$ 1,420,774	\$ 1,212,293	\$ 1,284,148	\$ 12,028,773
FTA 5310	\$ -	\$ -	\$ -	\$ -	\$ -
FTA 5311	\$ -	\$ -	\$ -	\$ -	\$ -
FTA 5316	\$ 208,000	\$ 216,320	\$ 224,973	\$ 233,972	\$ 883,265
FTA 5317	\$ 26,000	\$ 27,040	\$ 28,122	\$ 29,246	\$ 110,408
PMTF	\$ 2,052,272	\$ 2,134,363	\$ 2,219,737	\$ 2,308,527	\$ 8,714,899
Farebox	\$ 1,185,600	\$ 1,233,024	\$ 1,282,345	\$ 1,333,639	\$ 5,034,608
Local	\$ 3,535,295	\$ 1,922,895	\$ 1,933,483	\$ 2,016,663	\$ 9,408,335
<b>TOTAL</b>	\$ 15,118,725	\$ 6,954,416	\$ 6,900,953	\$ 7,206,194	\$ 36,180,288

## Programmed Projects: Indiana University Transit

Indiana University Transit Projects		Fiscal Year			
		2009	2010	2011	2012
<b>Project:</b> Park & Ride Improvements	FTA 5309	\$ 1,500,000			
<b>Description:</b> Physical improvements to the IU Park & Ride station at the IU Football Stadium parking lot.	Local	\$ 300,000			
<b>DES#:</b> n/a					
<b>Support:</b> n/a	<b>TOTAL</b>	\$ 1,800,000	\$ -	\$ -	\$ -
<b>Project:</b> Fleet Expansion	FTA 5309		\$ 852,000		
<b>Description:</b> Three 40' diesel buses	Local		\$ 213,000		
<b>DES#:</b> n/a					
<b>Support:</b> n/a	<b>TOTAL</b>	\$ -	\$ 1,065,000	\$ -	\$ -
<b>Project:</b> Passenger Amenities	FTA 5309		\$ 160,000	\$ 160,000	\$ 160,000
<b>Description:</b> Passenger shelters	Local		\$ 40,000	\$ 40,000	\$ 40,000
<b>DES#:</b> n/a					
<b>Support:</b> n/a	<b>TOTAL</b>		\$ 200,000	\$ 200,000	\$ 200,000
<b>Project:</b> Garage Safety and Efficiency	FTA 5309		\$ 80,000	\$ 80,000	\$ 80,000
<b>Description:</b> Miscellaneous capital equipment	Local		\$ 20,000	\$ 20,000	\$ 20,000
<b>DES#:</b> n/a					
<b>Support:</b> n/a	<b>TOTAL</b>		\$ 100,000	\$ 100,000	\$ 100,000

## Programmed Projects: Indiana University Transit

### Summary of Programmed Expenditures:

Funding Source	Fiscal Year				
	2009	2010	2011	2012	TOTAL
TEA-21	\$ -	\$ -	\$ -	\$ -	\$ -
STP	\$ -	\$ -	\$ -	\$ -	\$ -
State	\$ -	\$ -	\$ -	\$ -	\$ -
TE	\$ -	\$ -	\$ -	\$ -	\$ -
SRTS	\$ -	\$ -	\$ -	\$ -	\$ -
HSIP	\$ -	\$ -	\$ -	\$ -	\$ -
Bridge	\$ -	\$ -	\$ -	\$ -	\$ -
FTA 5307/09	\$ 1,500,000	\$ 1,092,000	\$ 240,000	\$ 240,000	\$ 3,072,000
FTA 5310	\$ -	\$ -	\$ -	\$ -	\$ -
FTA 5311	\$ -	\$ -	\$ -	\$ -	\$ -
FTA 5316	\$ -	\$ -	\$ -	\$ -	\$ -
FTA 5317	\$ -	\$ -	\$ -	\$ -	\$ -
PMTF	\$ -	\$ -	\$ -	\$ -	\$ -
Farebox	\$ -	\$ -	\$ -	\$ -	\$ -
Local	\$ 300,000	\$ 273,000	\$ 60,000	\$ 60,000	\$ 693,000
<b>TOTAL</b>	\$ 1,800,000	\$ 1,365,000	\$ 300,000	\$ 300,000	\$ 3,765,000

## Listing of Local Public Agency Projects by Year

The following set of tables and charts represents a compilation of annual expenditures and the funding sources for all local projects (note: these tables do not include information about Indiana Department of Transportation projects). It should be noted that 5% of available STP funding has been set aside in a Change Order Reserve. The intent of setting aside this money is to provide a source of revenue to cover project cost overruns. Any use of funds from this reserve will be subject to the MPO's Change Order Policy.

2009 Local Public Agency Project Listing

2009 Local Projects	Phase	TEA-21	STP	State	TE	SRTS	HESHIP	Bridge	FTA 5307/09	FTA 5310	FTA 5311	FTA 5316	FTA 5317	PMTF	Farebox	Local	TOTAL
BL Atwater Ave/Henderson St. Signal	PE															\$ 103,000	\$ 103,000
BL Atwater Ave/Henderson St. Signal	ROW															\$ 40,000	\$ 40,000
BL SR 45/46 Pedestrian Overpass	ROW			\$ 200,000													\$ 200,000
BL N. Campus Area Study	PE	\$ 60,000														\$ 15,000	\$ 75,000
BL Jackson Creek Trail	PE															\$ 114,300	\$ 114,300
BL Jackson Creek Trail	ROW				\$ 500,000											\$ 14,050	\$ 514,050
BL West 3rd Street	CON	\$ 1,586,767														\$ 1,232,705	\$ 2,819,472
BL West 3rd Street	CON															\$ 1,245,600	\$ 1,245,600
BL Siderail Construction	CON					\$ 250,000										\$ 420,000	\$ 670,000
BL Sare Road (Phase I)	PE															\$ 20,000	\$ 20,000
MC Vernal Pike (Phase II)	CON		\$ 3,461,140													\$ 3,452,785	\$ 6,913,925
MC Smith and Rogers Realignment	CON		\$ 96,132				\$ 554,000									\$ 103,568	\$ 713,700
MC Fullerton Pike/Gordon Pike/Rhorer Rd.	PE															\$ 550,000	\$ 550,000
MC Mt. Tabor Road Bridge #33	PE															\$ 50,000	\$ 50,000
MC Karst Farm Greenway (Phase I)	ROW															\$ 240,000	\$ 240,000
MCCSC Bike/Ped Education	n/a					\$ 75,000											\$ 75,000
MCCSC Batchelor Middle Infrastructure	PE					\$ 10,000										\$ 10,000	\$ 10,000
MCCSC Batchelor Middle Infrastructure	CON					\$ 50,000											\$ 50,000
EV Ellettsville Trail	CON		\$ 169,610													\$ 42,403	\$ 212,013
RBBCSC Edgewood Sidewalks	PE					\$ 33,000										\$ 33,000	\$ 33,000
RBBCSC Edgewood Sidewalks	ROW					\$ 32,619											\$ 32,619
RBBCSC Edgewood Sidewalks	CON					\$ 184,381											\$ 184,381
BT Operational Assistance	n/a								\$ 936,000			\$ 208,000	\$ 26,000	\$ 2,052,272	\$ 1,185,600	\$ 1,742,000	\$ 6,149,872
BT 35 Foot Buses	n/a								\$ 816,000							\$ 204,000	\$ 1,020,000
BT 40 Foot Buses	n/a								\$ 560,000							\$ 140,000	\$ 700,000
BT Maintenance	n/a								\$ 61,868							\$ 14,872	\$ 76,740
BT Access Vehicles	n/a								\$ 67,402							\$ 16,873	\$ 84,275
BT Downtown Transfer Facility	n/a								\$ 5,326,198							\$ 1,331,550	\$ 6,657,748
BT Fare Collection Equipment	n/a								\$ 344,000							\$ 86,000	\$ 430,000
IU Park and Ride Improvements	n/a								\$ 1,500,000							\$ 300,000	\$ 1,800,000
RT Operating Budget	n/a									\$ 567,020		\$ 30,800	\$ 30,800			\$ 594,690	\$ 1,161,710
RT Operating Assistance	n/a											\$ 30,400	\$ 30,400			\$ 70,425	\$ 132,025
RT Capital Assistance	n/a											\$ 94,000				\$ 53,200	\$ 114,000
RT Capital Budget	n/a															\$ 23,500	\$ 117,500
RT Capital Equipment	n/a															\$ 40,000	\$ 200,000
MPO 5% Change Order Reserve	n/a		\$ 136,043							\$ 160,000							\$ 336,043
<b>TOTAL</b>		\$ 1,646,767	\$ 3,653,315	\$ 200,000	\$ 689,610	\$ 635,000	\$ 554,000	\$ -	\$ 9,611,598	\$ 160,000	\$ 661,020	\$ 269,200	\$ 87,200	\$ 2,052,272	\$ 1,185,600	#####	\$ 33,646,063



2010 Local Public Agency Project Listing

2010 Local Projects	Phase	TEA-21	STP	State	TE	SRTS	HSIP	Bridge	FTA 530709	FTA 5310	FTA 5311	FTA 5316	FTA 5317	PMTF	Farebox	Local	TOTAL
BL West 3rd St.	CON		\$ 1,756,421													\$ 2,818,088	\$ 4,574,509
BL Rogers Street	ROW		\$ 584,000													\$ 146,000	\$ 730,000
BL Sare Road (Phase I)	PE															\$ 20,000	\$ 20,000
BL Sare Road (Phase I)	ROW															\$ 75,000	\$ 75,000
BL Sare Road (Phase II)	ROW															\$ 75,000	\$ 75,000
BL 17th St/Arlington Rd Roundabout	PE		\$ 200,000													\$ 50,000	\$ 250,000
BL Atwater/Henderson Signal	CON															\$ 30,000	\$ 30,000
MC Karst Farm Greenway (Phase I)	CON				\$ 1,000,000											\$ 257,000	\$ 1,257,000
MC Bridge Inventory (Phases I & II)	PE							\$ 103,680								\$ 25,920	\$ 129,600
MC Mt. Tabor Road Bridge #33	PE															\$ 550,000	\$ 550,000
MC Fullerton Pike/Gordon Pike/Rhorer Rd	PE															\$ 1,811,680	\$ 6,395,867
BT Operational Assistance	n/a								\$ 973,440			\$ 216,320	\$ 27,040	\$ 2,134,363	\$ 1,233,024	\$ 72,800	\$ 384,000
BT 40 Foot Buses	n/a								\$ 291,200							\$ 5,400	\$ 27,000
BT Passenger Shelters	n/a								\$ 21,600							\$ 15,487	\$ 79,810
BT Maintenance	n/a								\$ 64,343							\$ 17,548	\$ 87,740
BT Access Vehicles	n/a								\$ 70,192							\$ 40,000	\$ 200,000
IU Passenger Amenities	n/a								\$ 160,000							\$ 213,000	\$ 1,065,000
IU Fleet Expansion	n/a								\$ 852,000							\$ 20,000	\$ 100,000
IU Garage Safety and Efficiency	n/a								\$ 80,000							\$ 670,000	\$ 1,250,000
RT Operating Budget	n/a															\$ 24,000	\$ 120,000
RT Capital Budget	n/a															\$ 136,043	\$ 136,043
MPO 5% Change Order Reserve	n/a															\$ 676,000	\$ 2,134,363
<b>TOTAL</b>									\$ -	\$ -	\$ -	\$ 216,320	\$ 27,040	\$ 2,134,363	\$ 1,233,024	\$ 6,986,903	\$ 17,566,569

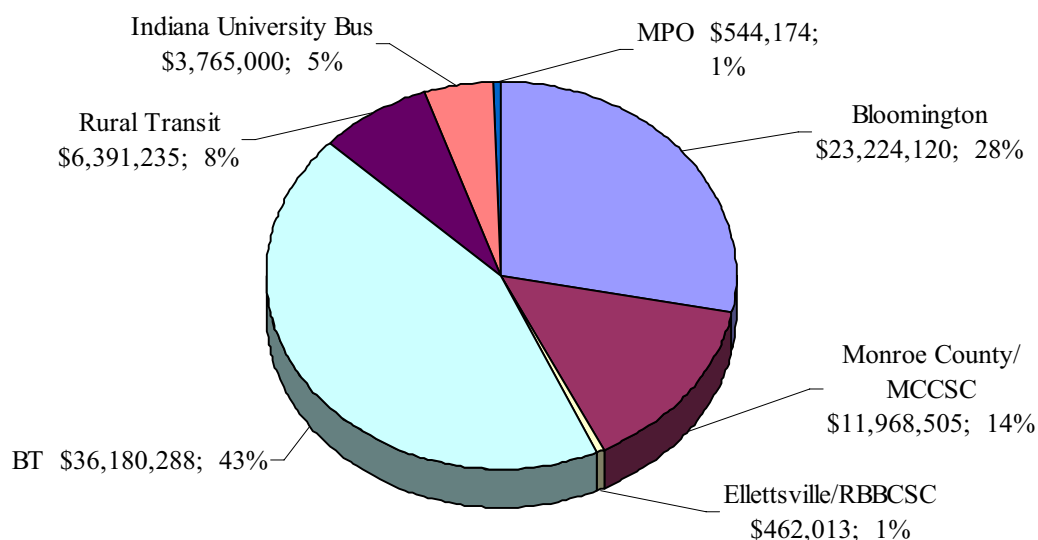
2011 Local Public Agency Project Listing

2011 Local Projects	Phase	TEA-21	STP	State	TE	SRTS	HSIP	Bridge	FTA 530709	FTA 5310	FTA 5311	FTA 5316	FTA 5317	PMTF	Farebox	Local	TOTAL
BL West 3rd St.	CON		\$ 607,000													\$ 319,000	\$ 926,000
BL Rogers Street	CON		\$ 500,000													\$ 125,000	\$ 625,000
BL Sare Road (Phase I)	CON		\$ 720,000													\$ 180,000	\$ 900,000
BL Tapp Road (Phase II)	ROW															\$ 225,000	\$ 225,000
BL Tapp Road (Phase III)	CON															\$ 2,695,000	\$ 2,695,000
BL 17th St/Arlington Rd Roundabout	ROW		\$ 700,000													\$ 175,000	\$ 875,000
BL Wenner Road Realignment	CON															\$ 2,057,189	\$ 2,057,189
MC Fullerton Pike/Gordon Pike/Rhorer Rd	PE															\$ 50,000	\$ 50,000
MC Mt. Tabor Road Bridge #33	PE															\$ 1,884,147	\$ 6,651,702
BT Operational Assistance	n/a								\$ 1,012,378			\$ 224,973	\$ 28,122	\$ 2,219,737	\$ 1,282,345	\$ 16,086	\$ 83,002
BT Maintenance	n/a								\$ 66,916							\$ 18,250	\$ 91,249
BT Access Vehicles	n/a								\$ 72,999							\$ 15,000	\$ 75,000
BT 25 Foot Buses	n/a								\$ 60,000							\$ 40,000	\$ 200,000
IU Passenger Amenities	n/a								\$ 160,000							\$ 20,000	\$ 100,000
IU Garage Safety and Efficiency	n/a								\$ 80,000							\$ 800,000	\$ 1,400,000
RT Operating Budget	n/a															\$ 24,000	\$ 122,000
RT Capital Budget	n/a															\$ 97,600	\$ 97,600
MPO 5% Change Order Reserve	n/a															\$ 697,600	\$ 2,219,737
<b>TOTAL</b>									\$ -	\$ -	\$ -	\$ 224,973	\$ 28,122	\$ 2,219,737	\$ 1,282,345	\$ 9,434,072	\$ 18,002,185

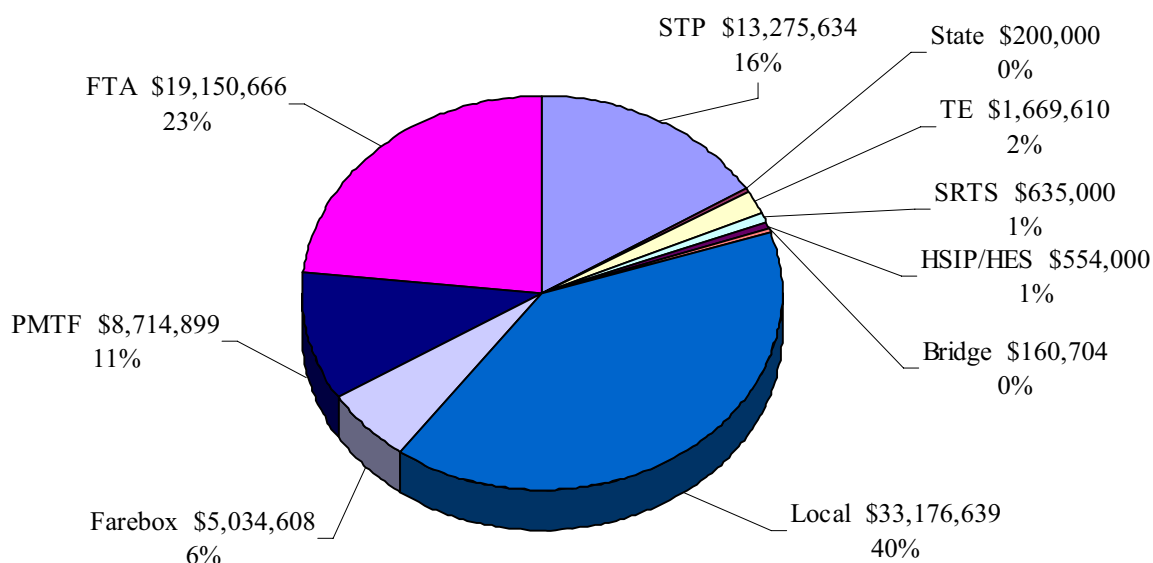
2012 Local Public Agency Project Listing

2012 Local Projects	Phase	TEA-21	STP	State	TE	SRTS	HSIP	Bridge	FTA 530709	FTA 5310	FTA 5311	FTA 5316	FTA 5317	PMTF	Farebox	Local	TOTAL
BL 17th St/Arlington Rd Roundabout	CON		\$ 2,500,000													\$ 625,000	\$ 3,125,000
MC Bridge Inventory (Phase I & II)	PE															\$ 14,256	\$ 71,280
MC Fullerton Pike/Gordon Pike/Rhorer Rd	PE							\$ 57,024								\$ 108,000	\$ 108,000
MC Fullerton Pike/Gordon Pike/Rhorer Rd	ROW															\$ 550,000	\$ 550,000
MC Mt. Tabor Road Bridge #33	PE															\$ 25,000	\$ 25,000
MC Mt. Tabor Road Bridge #33	ROW															\$ 25,000	\$ 25,000
BT Operational Assistance	n/a								\$ 1,052,873			\$ 233,972	\$ 29,246	\$ 2,308,527	\$ 1,333,639	\$ 1,959,513	\$ 6,917,770
BT Maintenance	n/a								\$ 69,593							\$ 16,729	\$ 86,322
BT Passenger Shelters	n/a								\$ 23,363							\$ 5,841	\$ 29,203
BT Access Vehicles	n/a								\$ 75,919							\$ 19,990	\$ 94,909
BT 25 Foot Buses	n/a								\$ 62,400							\$ 15,600	\$ 76,000
IU Passenger Amenities	n/a								\$ 160,000							\$ 40,000	\$ 200,000
IU Garage Safety and Efficiency	n/a								\$ 80,000							\$ 20,000	\$ 100,000
RT Operating Budget	n/a															\$ 1,010,000	\$ 1,650,000
RT Capital Budget	n/a															\$ 24,800	\$ 124,000
MPO 5% Change Order Reserve	n/a															\$ 4,458,719	\$ 13,320,517
<b>TOTAL</b>									\$ -	\$ -	\$ -	\$ 233,972	\$ 29,246	\$ 2,308,527	\$ 1,333,639	\$ 4,458,719	\$ 13,320,517

### **FY 2009-2012 Total Expenditures on Local Projects by Implementing Agency**



### **FY 2009-2012 Total Expenditures for Local Projects by Funding Source**



*\*It should be noted that expenditures related to transit include operational expenses.*

*\*\*Expenditure for Monroe County include expenditures for Monroe County Community School Corporation; Expenditures for Ellettsville include expenditures for Richland Bean Blossom Community School Corporation.*

**FY 2009 – 2012 Transportation Improvement Program**  
Bloomington/Monroe County Metropolitan Planning Organization

## Abbreviations and Acronyms List

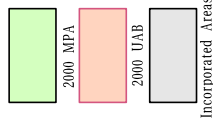
3C	Continuing, Comprehensive, and Cooperative Planning Process
ADA	Americans with Disabilities Act
BATGSP	Bloomington Alternative Transportation & Greenways System Plan
BL	City of Bloomington
CAC	Citizens Advisory Committee
BOND	Municipal Bond
BR	Bridge Replacement and Rehabilitation
BT	Bloomington Transit
CDBG	Community Development Block Grant
CMAQ	Congestion Mitigation and Air Quality
CON	Construction
EJ	Environmental Justice
ERCP	Ellettsville Rural Community Plan
EV	Town of Ellettsville
FHWA	Federal Highway Administration
FTA	Federal Transit Administration
FY	Fiscal Year (for the TIP: July 1 through June 30)
GPP	Growth Policies Plan
HES	Hazard Elimination Safety Program
HPMS	Highway Performance Monitoring System
HSIP	Highway Safety Improvement Program
IM	Interstate Maintenance
IN	State of Indiana
INDOT	Indiana Department of Transportation
INSTIP	Indiana State Transportation Improvement Program
IU	Indiana University
LPA	Local Public Agency
L RTP	Long Range Transportation Plan
MC	Monroe County
MCATGSP	Monroe County Alternative Transportation and Greenways System Plan
MCCSC	Monroe County Community School Corporation
MPA	Metropolitan Planning Area
MPO	Metropolitan Planning Organization
MTP	Master Thoroughfare Plan
NHS	National Highway System
PC	Policy Committee
PE	Preliminary Engineering
PMP	Parks Master Plan
PMTF	Public Mass Transportation Fund
RABA	Revenue Aligned Budget Authority
RBBCSC	Richland-Bean Blossom Community School Corporation
ROW	Right-of-Way
RT	Rural Transit
SAFETEA-LU	Safe, Affordable, Flexible, Efficient Transportation Equity Act: A Legacy for Users
SRTS	Safe Routes to School
STP	Surface Transportation Program
TAC	Technical Advisory Committee
TDF	Travel Demand Forecast
TDM	Travel Demand Model
TEA-21	Transportation Equity Act for the 21 <sup>st</sup> Century
TE	Transportation Enhancements
TIF	Tax Increment Financing District
TIP	Transportation Improvement Program
TIS	Traffic Impact Study
TOD	Transit Oriented Development
UAB	Urbanized Area Boundary
UMTA	Urban Mass Transit Administration
UPWP	Unified Planning Work Program



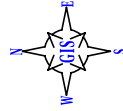


Metropolitan Planning Area (MPA)/Urbanized Area Boundary (UAB) Map

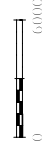
The Urbanized Area Boundary is the geographic area in which the metropolitan planning process must be carried out. It shall at a minimum cover the statistical geographic area which has a population of 50,000 (as determined by the Census Bureau). The Metropolitan Planning Area represents an adjustment or revision to the Urbanized Area Boundary to smooth out geographic irregularities and establish more logical boundary lines, instead of those established by the Census Bureau.



Feb 13, 2007



Scale: 1" = 6000'



This map was produced by the City of Bloomington GIS for use as map information only. Map is NOT warranted.

Tmropa05pB

## ADOPTION RESOLUTION FY 2008-15

**RESOLUTION ADOPTING THE TRANSPORTATION IMPROVEMENT PROGRAM FOR FISCAL YEARS 2009 THROUGH 2012** as presented to the Policy Committee of the Bloomington/Monroe County Metropolitan Planning Organization (MPO) on June 13, 2008.

**WHEREAS**, the Bloomington/Monroe County Metropolitan Planning Organization (MPO) is the organization designated by the Governor of Indiana as the Metropolitan Planning Organization responsible for carrying out, with the State of Indiana, the provisions of 23 U.S.C. 134, and capable of meeting the requirements thereof for the Bloomington, Indiana urbanized area; and

**WHEREAS**, the MPO must develop and adopt a Transportation Improvement Program (TIP) detailing all transportation projects that are anticipated to use Federal Highway Administration and Federal Transit Administration funding in the MPO urbanized area over the next four year(s); and

**WHEREAS**, the Technical Advisory Committee recommended adoption of the Transportation Improvement Program at their meeting on May 23, 2008 as did the Citizens Advisory Committee at their meeting on May 28, 2008; and

**WHEREAS**, the work conducted to create the Transportation Improvement Program was performed under Element 201 of the Fiscal Year 2008 Unified Planning Work Program for the MPO.

**NOW, THEREFORE, BE IT RESOLVED:**

- (1) That the Bloomington/Monroe County Metropolitan Planning Organization hereby adopts the Fiscal Years 2009-2012 Transportation Improvement Program; and
- (2) That project listings for INDOT will reflect those in the FY 2008-2011 Transportation Improvement Program
- (3) That the project details for the SR 45 at Garrison Chapel Rd. intersection project (DES# 0710011) will include Engineering in 2009 totaling \$133,000.
- (4) That the adopted document shall be forwarded to all relevant public officials and government agencies, and shall be available for public inspection during regular business hours at the City of Bloomington Planning Department, located in the Showers Center City Hall at 401 North Morton Street, Bloomington, Indiana.

PASSED AND ADOPTED by the Policy Committee by a vote of 8 - 0, upon this 13<sup>th</sup> day of June, 2008.

  
Lynn Coyne  
Vice-Chair, Policy Committee  
Bloomington/Monroe County MPO

  
Attest: Josh Desmond  
Director  
Bloomington/Monroe County MPO