

Transportation Improvement Program Fiscal Years 2014 - 2017

**Adopted
June 14, 2013**

**Last Amended
April 10, 2015**

The preparation of this report has been financed in part through grant[s] from the Federal Highway Administration and Federal Transit Administration, U.S. Department of Transportation, under the Metropolitan Planning Program, Section 104(f) of Title 23, U.S. Code. The contents of this report do not necessarily reflect the official views or policy of the U.S. Department of Transportation.

TABLE OF CONTENTS

I. INTRODUCTION	1
A. Applicability	1
B. Air Quality	1
C. Fiscal Constraint	1
D. Year of Implementation Dollars	1
E. Complete Streets	2
F. Project Selection	2
G. Amendment Process	2
II. FISCAL YEAR 2014 - 2017 TIP DEVELOPMENT TIMELINE	3
IV. LOCAL REVENUE & EXPENDITURE SUMMARY	5
A. Projected Revenues for Local Projects	5
B. Programmed Expenditures for Local Projects	6
C. Programmed Projects for State Projects	6
D. Programmed Projects	7
Programmed Projects: State of Indiana	8
Programmed Projects: Monroe County	18
Programmed Projects: City of Bloomington	24
Programmed Projects: Bloomington Transit	41
Programmed Projects: Rural Transit	44
Programmed Projects: Monroe County Community School Corporation	45
APPENDIX I: ABBREVIATIONS AND DEFINITIONS LIST	I
APPENDIX II: COMPLETE STREETS COMPLIANCE	II
APPENDIX III: TOTAL EXPENDITURE CHARTS	IV
APPENDIX IV: LISTING OF PROJECTS BY YEAR	V
APPENDIX V: URBANIZED AREA BOUNDARY	X
APPENDIX VI: SELF CERTIFICATION	X
APPENDIX VII: AMENDMENT RESOLUTIONS	XI

(This page intentionally left blank.)

I. Introduction

The Transportation Improvement Program (TIP) is a strategic capital planning document used by the Bloomington/Monroe County Metropolitan Planning Organization (BMCMPPO) to program funding for transportation projects. Pursuant to the most recent transportation legislation, Moving Ahead for Progress in the 21st Century, or MAP-21, the TIP must include at least four fiscal years. The TIP includes the list of priority projects to be carried out in each of the four years indicated in the document. The TIP must be consistent with the 2030 Long Range Transportation Plan, the Transit Development Plan, and other planning studies developed by the BMCMPPO and its local stakeholders.

A. Applicability

The TIP is a multi-modal capital budgeting tool that specifies an implementation timetable, funding sources, and agencies responsible for transportation related projects within the BMCMPPO metropolitan planning area (MPA). Projects come from any one of the following seven implementing agencies (refer to Appendix V for a map of the BMCMPPO's urbanized area boundary):

- The Indiana Department of Transportation*
- Monroe County*
- City of Bloomington
- Town of Ellettsville
- Bloomington Public Transportation Corporation (Bloomington Transit)
- Rural Transit*
- Indiana University

*Some agencies serve an area larger than the BMCMPPO's urbanized area and may have projects that use federal funding which are not reflected in this document.

B. Air Quality

The BMCMPPO, the Federal Highway Administration (FHWA), and the Federal Transit Administration (FTA) must all determine that new, or amended, TIP documents conform with the State's Air Quality Plan's purpose of attaining the National Ambient Air Quality Standards (NAAQS). The only exception is for amendments involving projects explicitly exempted by the U.S. Environmental Protection Agency's (EPA) conformity regulation. The Bloomington/Monroe County BMCMPPO is exempt from the air quality requirements because it has not been designated as a non-attainment area.

C. Fiscal Constraint

The TIP must be financially constrained by year and include only those projects for which funding has been identified - using current or reasonably available revenue sources. The financial plan in the TIP is developed by the BMCMPPO in cooperation with the State of Indiana and area transit operators. In order to enable the BMCMPPO to conduct adequate financial planning, both the state and transit operators provide the BMCMPPO with information early in the TIP development process. The information provided by these groups concerns the likely amount of Federal and State funding available to the BMCMPPO.

D. Year of Implementation Dollars

MAP-21 mandates that the TIP reflect project costs in year of implementation dollars. By doing so, projects should anticipate less unforeseen cost over-runs which could jeopardize project implementation. Consequently, a four percent (4%) inflation factor was applied to all phases of all local projects identified in the TIP (FY 2014 was used as the base year). This inflation rate was agreed upon by Local Public Agencies (LPAs) in early 2008.

E. Complete Streets

On January 9, 2009 the Policy Committee adopted a Complete Streets Policy. The purpose of the policy is to ensure that all federally funded local road projects are designed and built to adequately accommodate all users of a corridor including: pedestrians, bicyclists, users of mass transit, people with disabilities, the elderly, motorists, freight providers, emergency responders, and adjacent land users. Project submittals by LPAs demonstrate compliance with the policy where applicable. This information is reviewed by the Citizens Advisory Committee and Technical Advisory Committee. The Policy Committee certifies through resolution that applicable projects are either compliant or exempt from the Complete Streets Policy. A table at the end of the document (Appendix II) illustrates local project compliance with the Complete Streets Policy.

F. Project Selection

Projects listed in the TIP typically originate in the Long Range Transportation Plan (LRTP) developed by the BMCMPPO in cooperation with the respective implementing agencies involved in the planning process. These implementing agencies then carry out the transportation plan's specific elements in the TIP. As a result, the TIP serves as a strategic management tool that accomplishes the objectives of the BMCMPPO transportation plan.

Project prioritization is an important element of the TIP, especially since the demand for Federal-aid transportation projects usually exceeds the level of Federal funds available for use. State highway projects in the TIP have been prioritized by the Indiana Department of Transportation. Local Federal-aid highway improvement projects programmed by the City of Bloomington, Monroe County and the Town of Ellettsville have been prioritized according to resource availability. Transportation improvement projects in the BMCMPPO's urbanized area may be prioritized based on the following general hierarchy:

1. Unfunded capital projects that have been programmed and are ready for contract letting;
2. Capital projects programmed for construction that will be ready for contract letting in the immediate future;
3. Projects involving traffic operation or system management improvements;
4. Projects programmed for right-of-way acquisition, and
5. Projects programmed for preliminary engineering and/or advanced studies.

Projects initiated locally are jointly prioritized according to the type of activity scheduled in the TIP and the Federal funding category. The process of prioritizing projects is also influenced by state and local policy-level decision making and the availability of Federal, state, and local funds. Wherever possible, technical and non-technical factors are jointly used to identify projects which have the greatest need for implementation.

G. Amendment Process

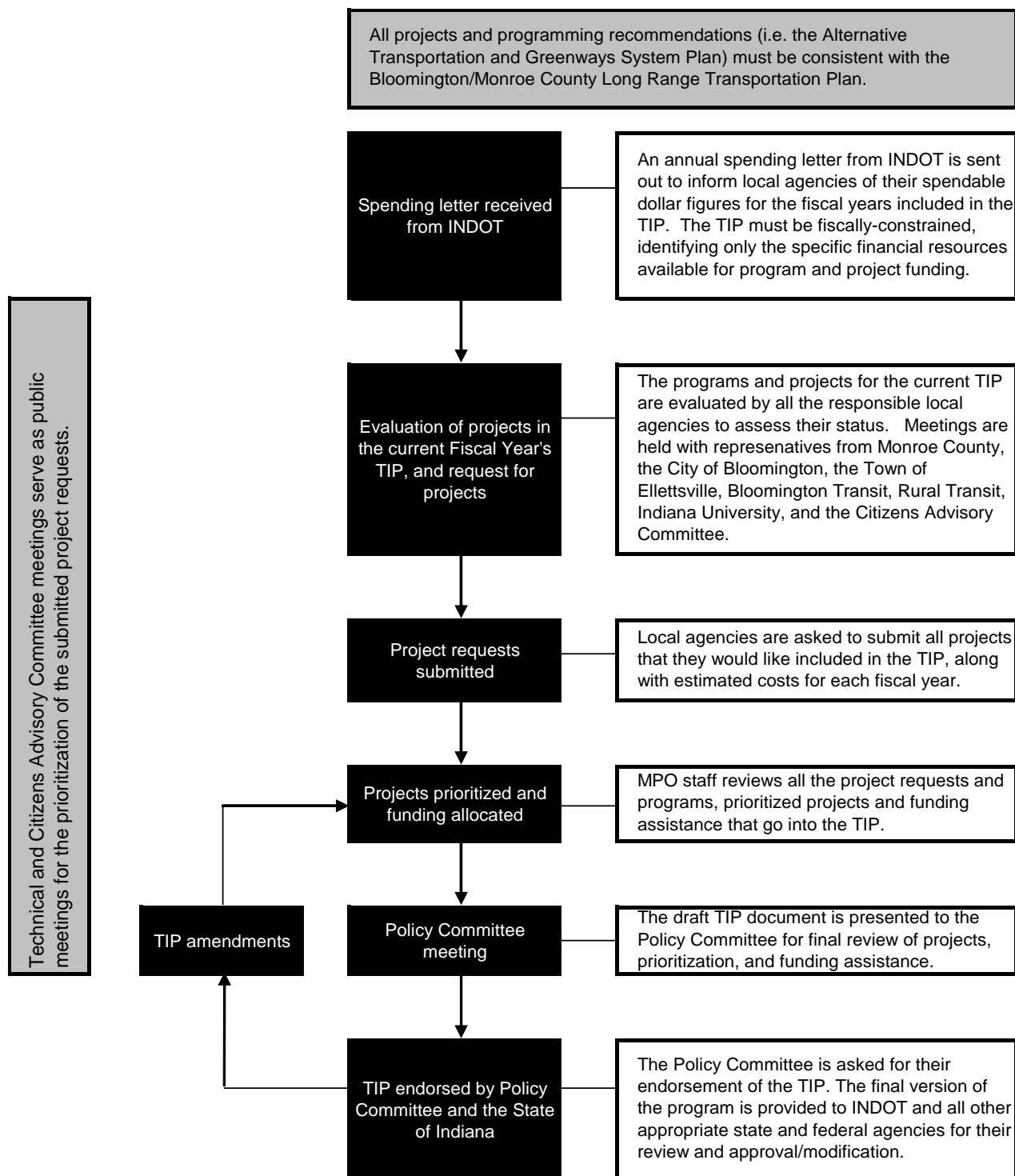
The TIP may be modified pursuant to the procedures outlined in the BMCMPPO's Public Participation Plan. The scope of a TIP amendment will dictate the level of public participation solicited (major amendment, minor amendment, administrative modification). The TIP must be approved by the BMCMPPO and the Governor of the State of Indiana. A conformity determination must also be made by the FHWA and the FTA. Once approved, the TIP then becomes, without modification, part of the Statewide Transportation Improvement Program (STIP). The frequency and cycle for updating the TIP should be compatible with that of the STIP.

II. Fiscal Year 2014 - 2017 TIP Development Timeline

The following list provides a chronology of events that have taken place throughout the development of this document:

<u>Date</u>	<u>Description</u>
Jan. 31, 2013	Call for projects is issued to LPAs
Feb. 12, 2013	Kick-off meeting with LPAs to discuss funding and projects
Feb. 27, 2013	First review of draft TIP by Technical Advisory Committee Citizens Advisory Committee
Mar. 1, 2013	Call for Projects ends, project submittals due
Mar. 21, 2013	Meeting with LPAs to discuss project submittals and available budget
Mar. 27, 2013.....	Second review of draft TIP by Technical Advisory Committee and Citizens Advisory Committee
Apr. 12, 2013.....	First review of draft TIP by the Policy Committee
Apr. 24, 2013.....	Review and recommendation by the Technical Advisory Committee and Citizens Advisory Committee
May 3 to Jun. 3, 2013.....	Thirty day public comment and review period
Jun. 14, 2013.....	Policy Committee approves 2014-2017 Transportation Improvement Program
October 11, 2013.....	Policy Committee amend TIP to include MCCSC and INDOT Bridge Inspection projects
February 7, 2014.....	Policy Committee amends TIP to include projects awarded HSIP & TA funds, and amendments as requested by INDOT, BL, MC and BT
April 11, 2014.....	Administrative approvals to amend TIP as requested by BL and BT
September 12, 2014.....	Policy Committee amend TIP to include INDOT QA/QC Bridge Insp. Data
November 7, 2014.....	Policy Committee amend TIP as requested by MC, BL and INDOT
January 9, 2015.....	Policy Committee amend TIP as requested by INDOT
March 6, 2015.....	Policy Committee amend TIP as requested by INDOT

III. TIP Development Process



IV. Local Revenue & Expenditure Summary

In order to remain fiscally constrained, the Transportation Improvement Program must balance estimated project expenditures with expected funding revenues. In addition, each particular source of funding must be used in a manner consistent with its designated purpose. The process of balancing expenditures across the portfolio of available funds requires cooperation and support from all of the BMCMPPO stakeholders. The Fiscal Year used for the purposes of the TIP begins on July 1 and ends on June 30. Thus, Fiscal Year 2014 begins on July 1, 2013 and ends on June 30, 2018.

The tables in this section summarize the projected local revenues and expenditures for fiscal years 2014 through 2017. They do not include programmed funds or projects for the State of Indiana, as these are subject to statewide financial constraints beyond the scope of the BMCMPPO. Non-local revenue forecasts are based on past receipts, projections from the FHWA, FTA, and INDOT, anticipated Federal spending authorization levels, and consultations with appropriate Federal and State funding agencies. Local funding forecasts are derived from a similar methodology and through extensive coordination with local agencies. Project expenditures are based on realistic cost estimates provided by the implementing agency for each project.

A. Projected Revenues for Local Projects

The table below summarizes the projected funding available, by funding source, for programming in the FY 2014-2017 TIP. The STP line highlights estimated spending authority available through FY 2017. This table does not include Federal revenues that may be added in the future through special Congressional earmarks, discretionary funding sources, or other grants. Any project utilizing such funds has been marked as “Illustrative” and is not counted in the fiscal constraint analysis.

Funding Source	Fiscal Year				
	2014	2015	2016	2017	TOTAL
STP	\$ 5,587,268	\$ 2,562,050	\$ 2,562,050	\$ 2,562,050	\$ 13,273,418
STP Balance	\$ -	\$ -	\$ 5,353,491	\$ 5,353,491	
TE	\$ 1,630,000	\$ -	\$ -	\$ -	\$ 1,630,000
TA	\$ 313,248	\$ 156,624	\$ 152,762	\$ 152,762	\$ 775,396
TA Balance	\$ -	\$ -	\$ 312,962	\$ 244,924	
HSIP	\$ 814,442	\$ 503,064	\$ 389,686	\$ 389,686	\$ 2,096,878
HSIP Balance			\$ 1,558,848	\$ 0	
Bridge	\$ 71,614	\$ -	\$ 66,106	\$ -	\$ 137,720
SRTS	\$ 20,000	\$ 55,000	\$ -	\$ -	\$ 75,000
FTA 5307/09	\$ 2,427,128	\$ 3,086,737	\$ 3,400,178	\$ 4,034,673	\$ 12,948,716
FTA 5311	\$ 713,651	\$ 742,139	\$ 816,353	\$ 897,988	\$ 3,170,131
FTA 5316	\$ 286,047	\$ -	\$ -	\$ -	\$ 286,047
FTA 5317	\$ 47,500	\$ -	\$ -	\$ -	\$ 47,500
PMTF	\$ 2,857,110	\$ 2,971,394	\$ 3,109,649	\$ 3,255,373	\$ 12,193,527
Farebox	\$ 1,609,939	\$ 1,674,336	\$ 1,741,310	\$ 1,810,962	\$ 6,836,547
Local	\$ 4,307,728	\$ 912,250	\$ 632,861	\$ 1,432,851	\$ 7,285,690
TOTAL	\$ 20,685,675	\$ 12,663,594	\$ 20,096,255	\$ 20,134,761	\$ 60,756,569

B. Programmed Expenditures for Local Projects

The table below summarizes the programmed local expenditures, by funding source, for projects in the FY 2014-2017 TIP. The available STP funding has been programmed to ensure a 5 % reserve to cover project cost overruns. Any usage of funds from this reserve will be subject to the BMCMPPO's Change Order Policy.

Funding Source	Fiscal Year				
	2014	2015	2016	2017	TOTAL
STP	\$ 3,566,642	\$ 2,800,668	\$ 1,378,524	\$ 2,562,050	\$ 10,307,883
STP Balance	\$ -	\$ -	\$ -	\$ 3,169,354	\$ 3,169,354
TE	\$ 1,630,000	\$ -	\$ -	\$ -	\$ 1,630,000
TA	\$ -	\$ 166,800	\$ 152,762	\$ 152,762	\$ 472,324
TA Balance	\$ -	\$ -	\$ 68,038	\$ -	\$ 68,038
HSIP	\$ -	\$ 251,532	\$ 389,686	\$ 389,686	\$ 1,030,903
HSIP Balance	\$ -	\$ -	\$ 1,558,848	\$ -	\$ 1,558,848
Bridge	\$ 71,614	\$ -	\$ 66,106	\$ -	\$ 137,720
SRTS	\$ 20,000	\$ 55,000	\$ -	\$ -	\$ 75,000
FTA 5307/09	\$ 2,427,128	\$ 3,086,737	\$ 3,400,178	\$ 4,034,673	\$ 12,948,716
FTA 5311	\$ 713,651	\$ 742,139	\$ 816,353	\$ 897,988	\$ 3,170,131
FTA 5316	\$ 286,047	\$ -	\$ -	\$ -	\$ 286,047
FTA 5317	\$ 47,500	\$ -	\$ -	\$ -	\$ 47,500
PMTF	\$ 2,857,110	\$ 2,971,394	\$ 3,109,649	\$ 3,255,373	\$ 12,193,527
Farebox	\$ 1,609,939	\$ 1,674,336	\$ 1,741,310	\$ 1,810,962	\$ 6,836,547
Local	\$ 4,307,728	\$ 912,250	\$ 632,861	\$ 1,432,851	\$ 7,285,690
TOTAL	\$ 17,537,359	\$ 12,660,856	\$ 13,314,314	\$ 17,705,699	\$ 61,218,228

C. Programmed Expenditures for State Projects

Funding Source	Fiscal Years				
	2014	2015	2016	2017	TOTAL
NHS	\$ 36,412,800	\$ 27,394,742	\$ 17,270,400	\$ 16,000,000	\$ 97,077,942
Bridge	\$ 1,216,000	\$ 1,327,600	\$ 480,000	\$ 880,000	\$ 3,903,600
HSIP	\$ 200,000	\$ -	\$ -	\$ -	\$ 200,000
State	\$ 9,459,700	\$ 7,118,086	\$ 4,437,600	\$ 4,220,000	\$ 25,235,386
TOTAL	\$ 47,288,500	\$ 35,840,428	\$ 22,188,000	\$ 21,100,000	\$ 126,416,928

D. Programmed Projects

The following tables provide a description of each project programmed in the Transportation Improvement Program for fiscal years 2014 to 2017. The tables are organized by implementing entity in the following order: Indiana Department of Transportation, Monroe County, City of Bloomington, Town of Ellettsville, Bloomington Transit and Rural Transit. At the end of each agency's section is a summary of programmed expenditures by funding source for each fiscal year.

Additionally, each project which involves an identifiable location is also accompanied by a visualization of the approximate project boundaries. The dashed white lines provide an estimation of project location based on best information available at the time this document was developed. These graphics are provided for the sake of reference only and should not be interpreted as exact delineations of project alignment.

A Google Map of projects sponsored by the Indiana Department of Transportation, Monroe County, City of Bloomington and the Town of Ellettsville can be viewed using the follow web address.

https://mapsengine.google.com/map/edit?mid=zP9N9A8PII9U.kw7_nTo9nxok&hl=en

Project Letting List				
Des #	Project Name	Project Sponsor	Anticipated Letting Date	Completed (Yes, No or In Progress)
0801059	Fullerton Pike	Monroe County	August 2016	In Progress
0600370	Karst Farm Greenway Phase 1	Monroe County	May 2014	In Progress
0902263	Karst Farm Greenway Phase 2a	Monroe County	August 2014	In Progress
1382431	Karst Farm Greenway Phase 3	Monroe County	Waiting on TAP call for projects	In Progress
0801060	Mt. Tabor Bridge	Monroe County	March 2015	Y
0900216	17th St. & Arlington Rd. Roundabout	City of Bloomington	Let in 2014	In Progress
0901710	17th St. & Jordan Ave. Intersection	City of Bloomington	December 2014	In Progress
1297060	Old SR 37 & Dunn St. Intersection	City of Bloomington	August 2015	In Progress
0901730	Tapp Rd. & Rockport Rd. Intersection	City of Bloomington	March 2017	In Progress
0902258	University Courts Brick Street Restoration	City of Bloomington	Let in 2014	In Progress
1382429	Black Lumber Trail Spur	City of Bloomington	March 2015	In Progress
1382416	Sign Upgrades (Zones 5-8)	City of Bloomington	Let in 2013	In Progress
1400166	Bloomington Bikeways Projects	City of Bloomington	August 2016	In Progress
1400167	Downtown Pedestrian Improvements	City of Bloomington	August 2016	In Progress

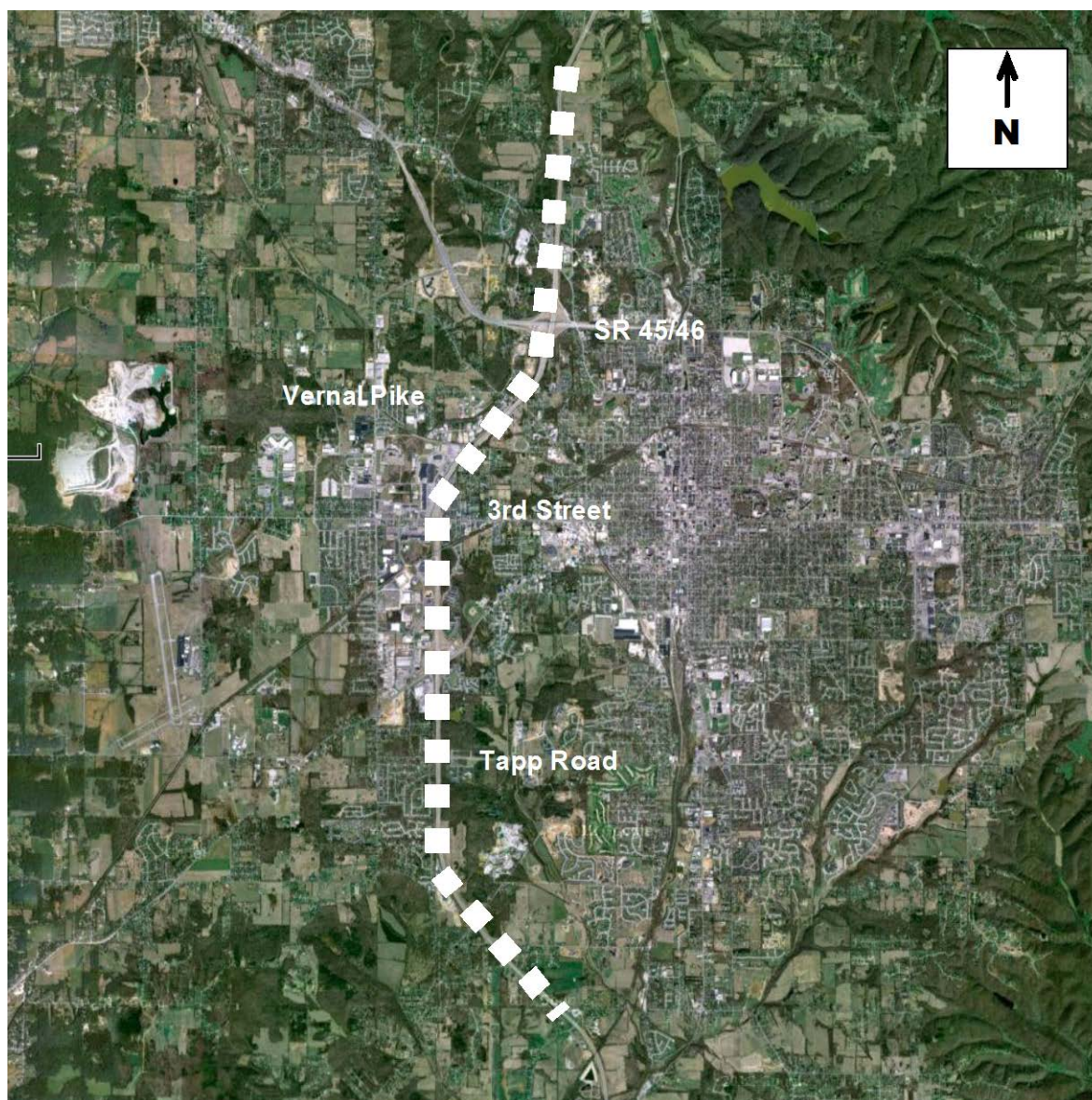
Programmed Projects: State of Indiana

State of Indiana Projects		Funding Source	Fiscal Year			
			2014	2015	2016	2017
Project:	New Signal Installation					
Location:	SR 46 and Matthews Drive at RP 47 + 08 in Ellettsville	BE				
Description:	Signal modernization at State Route 46 and Matthews Drive in Ellettsville	RW				
DES #:	1173647	NHS	\$ 172,800			
Support:		State	\$ 43,200			
Allied Projects		TOTAL:	\$ 216,000			



Programmed Projects: State of Indiana

State of Indiana Projects			Funding Source	Fiscal Year			
				2014	2015	2016	2017
Project:	I-69 Section 5	RE	NHS State	\$ 6,400,000	\$ 1,600,000		
Location:	Kinser Pike to Victor Pike		\$ 1,600,000	\$ 400,000			
Description:	Conversion of State Route 37 to fully access controlled interstate from Kinser Pike to Victor Pike	RW	NHS State	\$ 13,840,000	\$ 8,000,000		
			\$ 3,460,000	\$ 2,000,000			
Des #:	1297885, 1382776	CS	NHS State	\$ 16,000,000	\$ 16,000,000	\$ 16,000,000	\$ 16,000,000
Support:			\$ 4,000,000	\$ 4,000,000	\$ 4,000,000	\$ 4,000,000	\$ 4,000,000
Allied Projects	I-69 Section 4		TOTAL:	\$ 45,300,000	\$ 32,000,000	\$ 20,000,000	\$ 20,000,000



Fiscal Year 2014 – 2017 Transportation Improvement Program
Bloomington/Monroe County Metropolitan Planning Organization

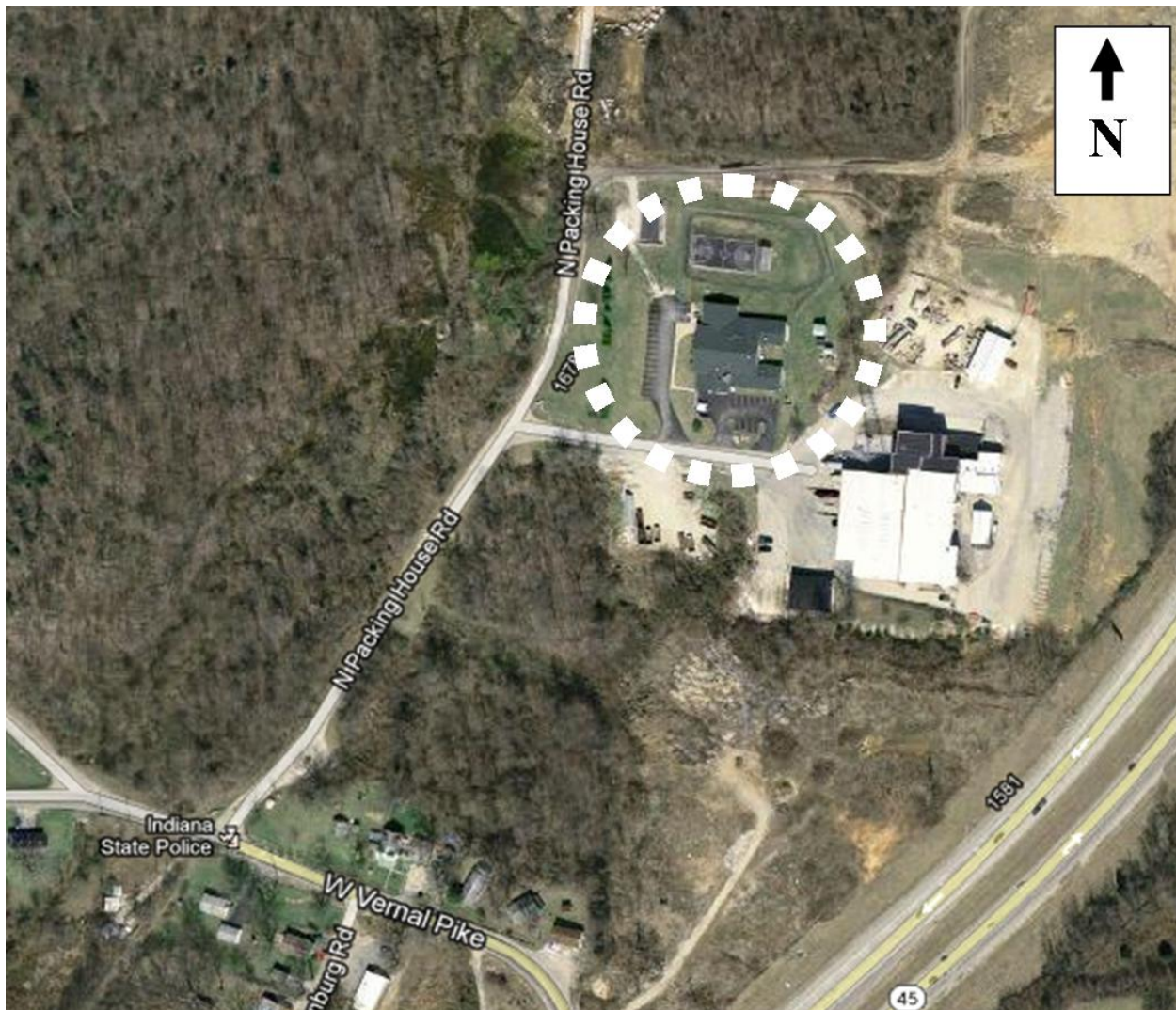
Programmed Projects: State of Indiana

State of Indiana Projects		Funding Source	Fiscal Year			
			2014	2015	2016	2017
Project:	Pavement Project	PE				
Location:	On State Route 45 from State Route 46 to ECL of Unionville	RW				
Description:	HMA Overlay, Preventive Maintenance	CH				
DES #:	1296962	NHS			\$ 1,270,400	
Support:		State			\$ 317,600	
Allied Projects		TOTAL:			\$ 1,588,000	



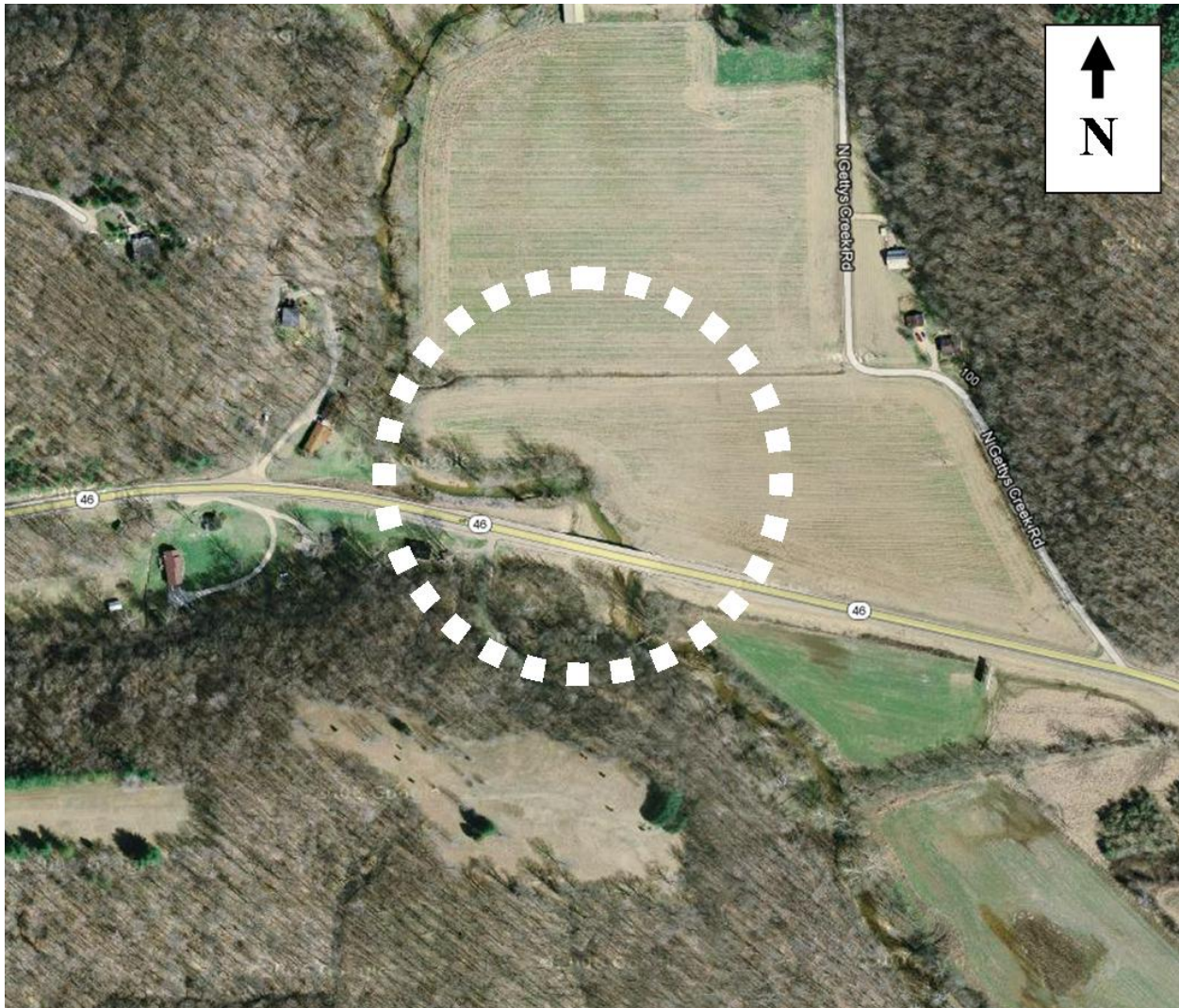
Programmed Projects: State of Indiana

State of Indiana Projects		Funding Source	Fiscal Year			
			2014	2015	2016	2017
Project:	ISP parking lot maintenance	PE				
Location:	Parking lot @ Indiana State Police in Bloomington	RW				
Description:	HMA Overlay, Preventative Maintenance	CN	State	\$ 52,500		
DES #:	1173506					
Support:						
Allied Projects		TOTAL:	\$ 52,500			



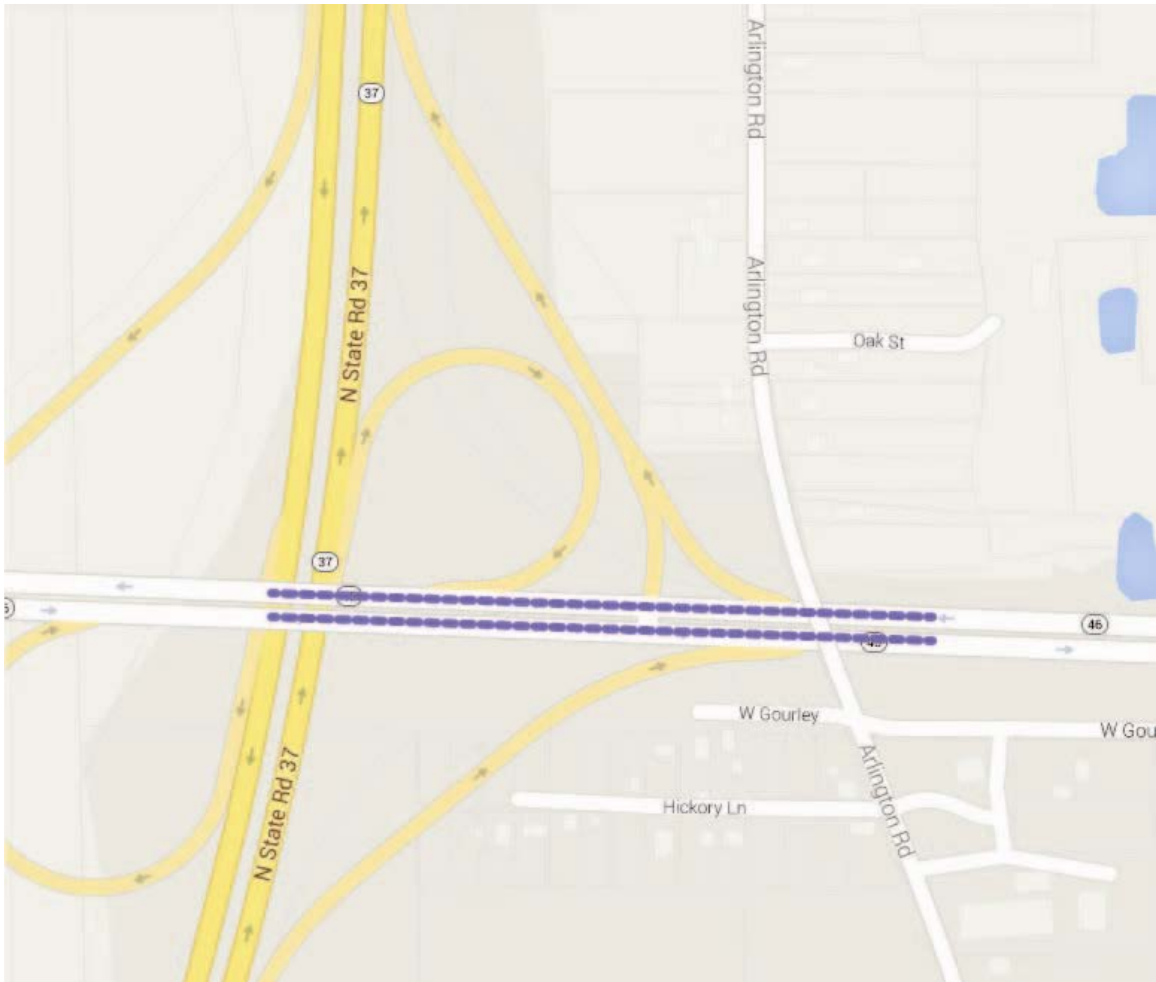
Programmed Projects: State of Indiana

State of Indiana Projects		Funding Source	Fiscal Year			
			2014	2015	2016	2017
Project:	Bridge Rehabilitation	BR	\$ 16,000			
Location:	3.00 miles E of SR-446 over Stephens Creek on SR-46	State	\$ 4,000			
Description:	Bridge rehabilitation over Stephens Creek on State Route 46, 3 miles east of State Route 446.	RW				
DES #:	1297004	BR		\$ 197,600		
Support:		State		\$ 49,400		
Allied Projects		TOTAL:		\$ 247,000		\$ -



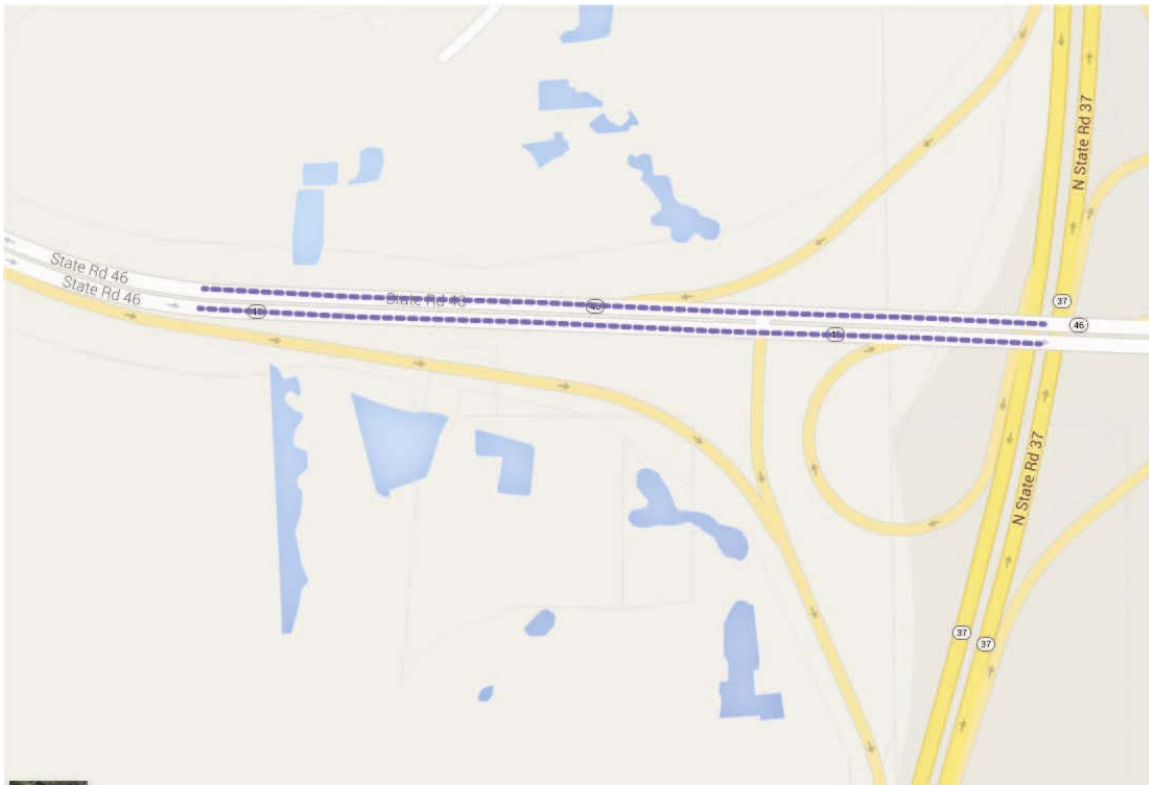
Programmed Projects: State of Indiana

State of Indiana Projects		Funding Source	Fiscal year			
			2014	2015	2016	2017
Project:	SR 45	PE				
Location:	From SR 37 to the end of Concrete Section (RP 38+13 to 38+53)					
Description:	Concrete Pavement Restoration (CPR)	RW				
DES#	1401344	CN	STP State		\$ 164,000	
Support:					\$ 41,000	
Allied Projects:	DES# 1401351	TOTAL			\$ 205,000	



Programmed Projects: State of Indiana

State of Indiana Projects		Funding Source	Fiscal year			
			2014	2015	2016	2017
Project:	SR 46	PE				
Location:	From end of Concrete Section to SR 37					
Description:	Concrete Pavement Restoration (CPR)	RW				
DES#	1401351	CN	STP State		\$ 163,200	
Support:					\$ 40,800	
Allied Projects:	DES# 1401344	TOTAL			204,000	



Programmed Projects: State of Indiana

State of Indiana Projects		Funding Source	Fiscal Year			
			2014	2015	2016	2017
Project:	Bridge Inspections	PE	BR	\$ 480,000	\$ 480,000	\$ 480,000
Location:	Various		State	\$ 120,000	\$ 120,000	\$ 120,000
Description:	Statewide underwater bridge inspections	RW				
Des #:	1297250	CN				
Support:						
Allied Projects:		TOTAL:	\$ 600,000	\$ 600,000	\$ 600,000	\$ 600,000

State of Indiana Projects		Funding Source	Fiscal Year			
			2014	2015	2016	2017
Project:	Bridge Inspections	PE	BR	\$ 480,000	\$ 400,000	\$ 400,000
Location:	Various		State	\$ 120,000	\$ 100,000	\$ 100,000
Description:	Statewide bridge load rating inspections	RW				
DES#:	1297451	CN				
Support:						
Allied Projects:	n/a	TOTAL	\$ 600,000	\$ 500,000	\$ -	\$ 500,000

State of Indiana Projects		Funding Source	Fiscal year			
			2014	2015	2016	2017
Project:	Bridge Inspections	PE	BR	\$ 200,000		
Location:	Various Statewide		State	\$ 50,000		
Description:	Quality Assurance/Quality Control program on both State and County bridge inspection data.	RW				
DES#	1382761	CN				
Support:						
Allied Projects:		TOTAL	\$ 250,000			

State of Indiana Projects		Funding Source	Fiscal year			
			2014	2015	2016	2017
Project:	Bridge Inspections	PE	BR	\$ 40,000		
Location:	Various Statewide		State	\$ 10,000		
Description:	Statewide bridge rehabilitation and emergency inspection	RW				
DES#	1297613	CN				
Support:						
Allied Projects:		TOTAL	\$ 50,000			

Programmed Projects: State of Indiana

State of Indiana Projects		Funding Source	Fiscal year			
			2014	2015	2016	2017
Project:	Raised Pavement Marking	PE				
Location:	South SR 37					
Description:	Replacement/Refurbishment of raised pavement markings on South SR 37.	RW				
DES#	1173441	CN	HSIP	\$ 200,000		
Support:						
Allied Projects:		TOTAL	\$ 200,000			

State of Indiana Projects		Funding Source	Fiscal year			
			2014	2015	2016	2017
Project:	State Route 446	PE				
Location:	SR 446, E Moores Pike to SR 46					
Description:	Surface treatment of SR 446 from E Moores Pike to SR 46	RW				
DES#	1383223	CN	STP State	\$ 227,200 \$ 56,800		
Support:						
Allied Projects:	State Route 46 Des#1383224	TOTAL		\$ 284,000		

State of Indiana Projects		Funding Source	Fiscal year			
			2014	2015	2016	2017
Project:	State Route 46	PE				
Location:	SR 46, Red Hill Road to end of concrete section near SR 37					
Description:	Surface treatment to SR 46 from Red Hill Road to end of concrete section near SR 37	RW				
DES#	1383224	CN	STP	\$ 1,648,000		
Support:			State	\$ 412,000		
Allied Projects:	SR 446 Des#1383223	TOTAL		\$ 2,060,000		

State of Indiana Projects			Funding Source	Fiscal year			
				2014	2015	2016	2017
Project:	QA/QC on Bridge Inspection Data	PE	BR		\$ 250,000		
Location:	Varies						
Description:	Quality control and quality assurance program on both State and County bridge inspection data	RW					
		CN					
DES#	1400933						
Support:							
Allied Projects:		TOTAL			\$ 250,000		

Programmed Projects: State of Indiana

State of Indiana Projects		Funding Source	Fiscal year			
			2014	2015	2016	2017
Project:	Traffic Signal Visibility Improvement	PE				
Location:	On SR 46 from Arlington Rd. to Clarizz Blvd					
Description:	Installation of back plates on 13 signals	RW				
DES#	1401180	CN	HSIP		\$ 464,000	
Support:			Local		\$ 116,000	
Allied Projects:		TOTAL			\$ 580,000	

Summary of Programmed Expenditures for State of Indiana Projects

Funding Source	Fiscal Years				
	2014	2015	2016	2017	TOTAL
NHS	\$ 36,412,800	\$ 27,475,200	\$ 17,597,600	\$ 16,000,000	\$ 97,485,600
Bridge	\$ 1,216,000	\$ 1,327,600	\$ 480,000	\$ 880,000	\$ 3,903,600
HSIP	\$ 200,000	\$ -	\$ 464,000		\$ 664,000
State	\$ 9,459,700	\$ 7,138,200	\$ 4,635,400	\$ 4,220,000	\$ 25,453,300
TOTAL	\$ 47,288,500	\$ 35,941,000	\$ 23,177,000	\$ 21,100,000	\$ 127,506,500

Programmed Projects: Monroe County

Monroe County Projects		Funding Source	Fiscal Year			
			2014	2015	2016	2017
Project:	Fullerton Pike/Gordon Pike/Rhorer Rd.					
Location:	475 feet west of the intersection of Old SR 37 and proceed east to the end point, 200 feet east of Walnut Street Pike	PE Local	\$ 385,400			
Description:	Turn lanes and the installation of a new traffic signal at the Walnut Street Pike intersection	RW Local		\$ 811,800		
DES#:	0801059	STP				\$ 2,562,050
Support:	GPP, LRTP	STP <i>Balance</i>				\$ 529,354
		Local				\$ 772,851
Allied Projects:	SR 37/I-69, Sare Road	TOTAL	\$ 385,400	\$ 811,800	\$ -	\$ 3,864,255

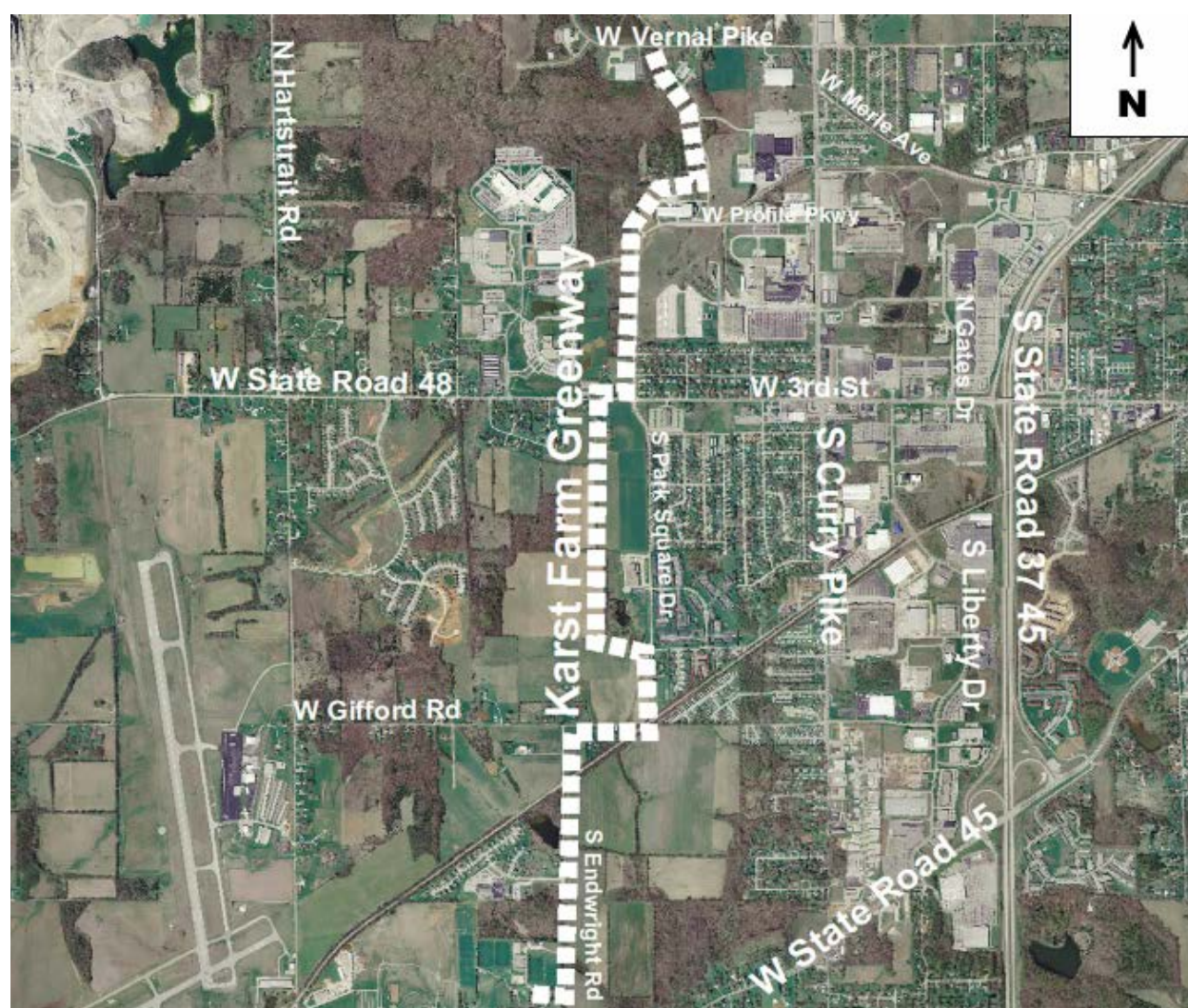
Note: This project is expected to incur \$22,415,800 in additional costs through Federal and local funding in outlying years beyond what is reflected in the project table.



Programmed Projects: Monroe County

Monroe County Projects		Funding Source	Fiscal Year			
			2014	2015	2016	2017
Project:	Karst Farm Greenway (Phase I)	PE				
Location:	South of Vernal Pike to Karst Farm Park	RW				
Description:	Preliminary engineering, Right-of-Way and construction of a multi-use trail for non-motorized use, including site amenities (~4.00 miles long)	TE*	\$ 1,500,000			
DES#:	0600370	Local	\$ 401,328			
Support:	L RTP, MCATGSP, BATGSP, ERCP					
Allied Projects:	Ellettsville Heritage Trail, B-Line Trail	TOTAL	\$ 1,901,328	\$ -	\$ -	\$ -

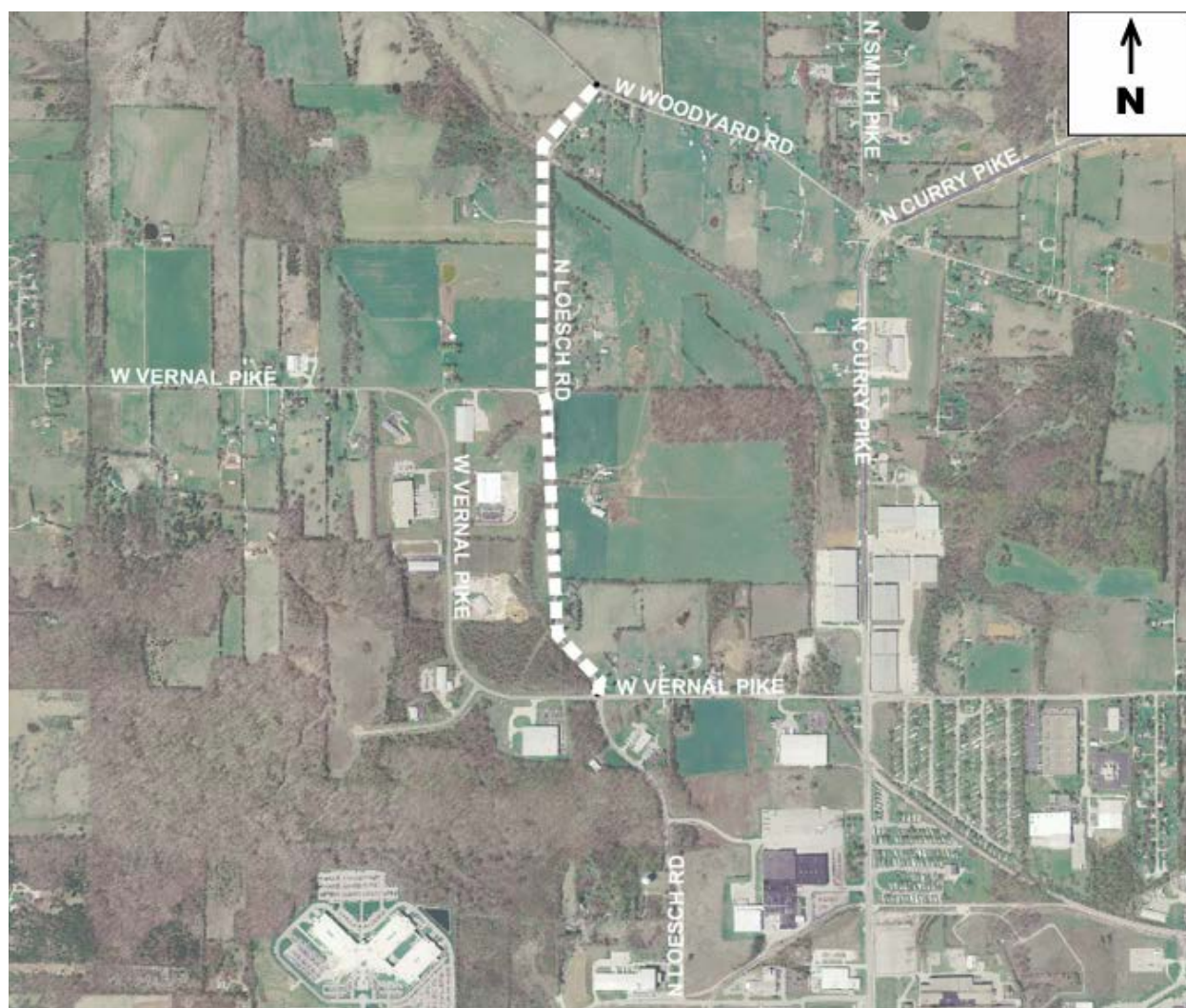
*TE funds were awarded through the statewide transportation enhancements program



Programmed Projects: Monroe County

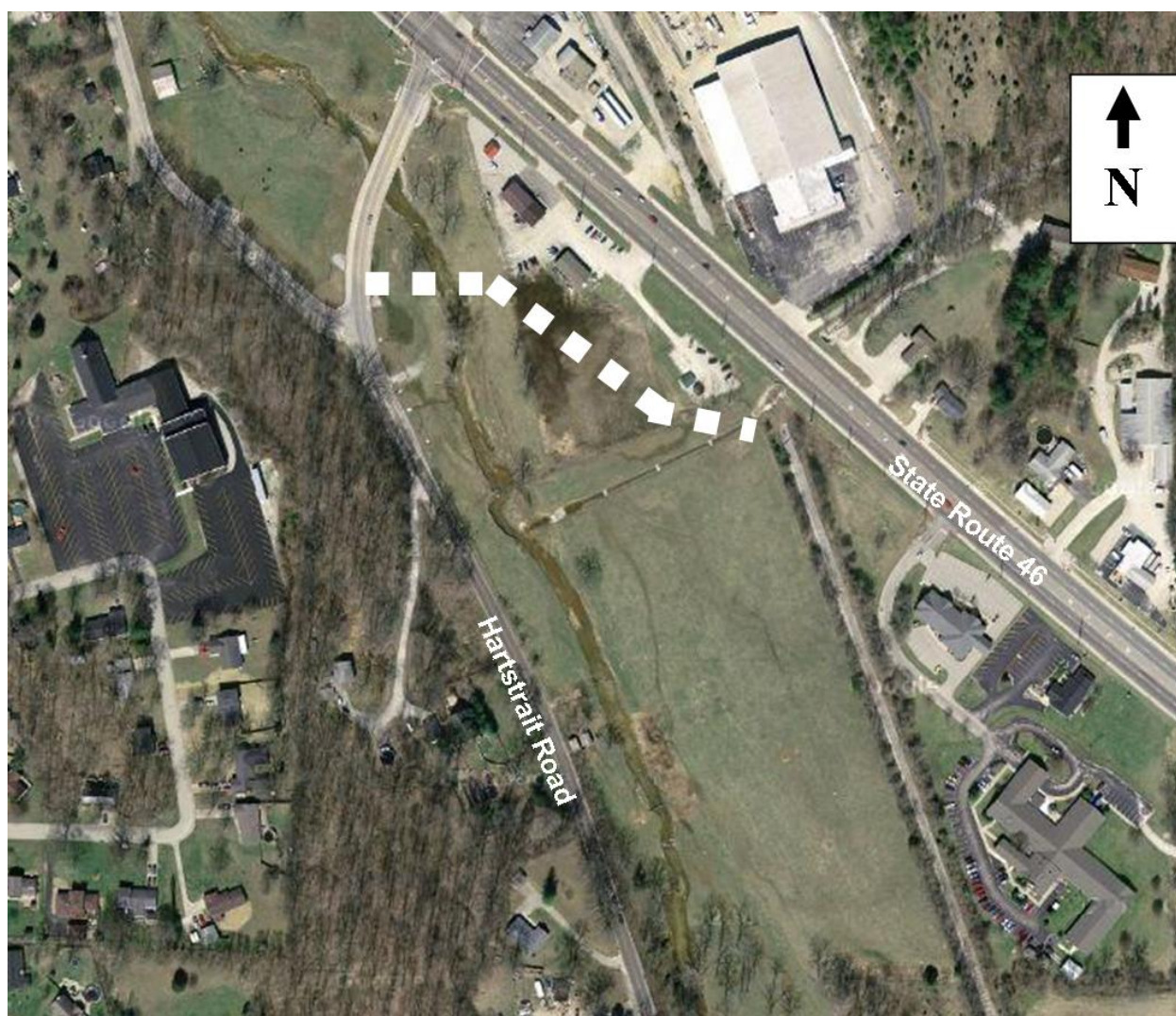
Monroe County Projects		Funding Source	Fiscal Year			
			2014	2015	2016	2017
Project:	Karst Farm Greenway (Phase 2a)	PE	Local	\$ 8,000		
Location:	Vernal Pike to Woodyard Rd.					
Description:	Preliminary engineering, Right-of-Way and construction of a multi-use trail for non-motorized use, including site amenities (~1.1 miles long)	RW	Local	\$ 91,200		
DES#:	0902263	TE*		\$ 430,000		
Support:	LRTP, MCATGSP, BATGSP, ERCP	TA 2015		\$ 120,400		
		Local		\$ 137,600		
Allied Projects:	Ellettsville Heritage Trail, B-Line Trail	TOTAL	\$ 99,200	\$ 688,000	\$ -	\$ -

*TE funds were awarded through the local transportation enhancements program



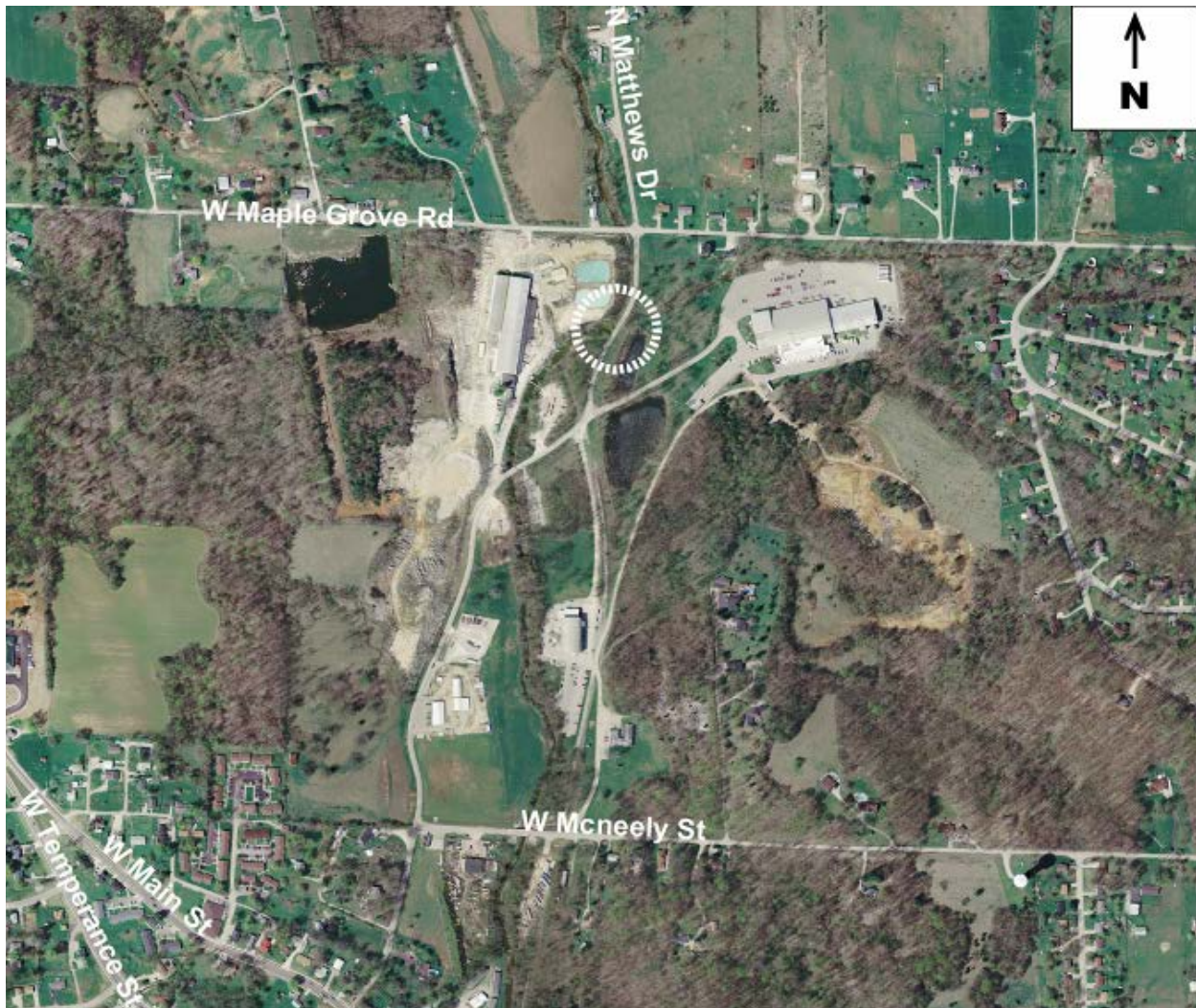
Programmed Projects: Monroe County

Monroe County Projects			Funding Source	Fiscal Year			
				2014	2015	2016	2017
Project:	Karst Farm Greenway (Phase 3)		TAP		\$ 38,400	\$ 18,960	
Location:	From railbanked area to Hartstrait Road	PE	Local		\$ 9,600	\$ 4,740	
Description:	Construction of multi-use trail	RW	TAP			\$ 8,000	
			Local			\$ 2,000	
DES#:	1382431	GN	TAP			\$ 127,089	
Support:	LRTP, MCATGSP, BATGSP, ERCP		TAP Balance			\$ 68,038	
			Local			\$ 48,782	
Allied Projects:	Other Karst Farm Phases, Ellettsville Heritage Trail, B-Line Trail	TOTAL		\$ -	\$ 48,000	\$ 277,609	\$ -



Programmed Projects: Monroe County

Monroe County Projects		Funding Source	Fiscal Year			
			2014	2015	2016	2017
Project:	Mt. Tabor Road Bridge #33					
Location:	Over Jack's Defeat Creek, between McNeely Street & Maple Grove Road	LE Local	\$ 43,000			
Description:	Bridge replacement	RW Local	\$ 15,500			
DES#:	0801060	STP		\$ 1,781,000		
Support:	Bridge Inventory & Safety Inspection, LRTP	CS Local		\$ 445,250		
Allied Projects:		TOTAL	\$ 58,500	\$ 2,226,250	\$ -	\$ -



Programmed Projects: Monroe County

Monroe County Projects		Funding Source	Fiscal Year			
			2014	2015	2016	2017
Project:	Bridge Safety Inspection & Inventory	PE	BR		\$ 66,106	
Location:	various locations in Monroe County		Local	\$ 17,904	\$ 16,526	
Description:	Bridge safety inspection and rating	RW				
DES#:	1382121	CN				
Support:	L RTP, NBIS					
Allied Projects:		TOTAL	\$ 89,518	\$ -	\$ 82,632	\$ -

Monroe County Projects		Funding Source	Fiscal Year			
			2014	2015	2016	2017
Project:	Signal Backplates	PE	Local		\$ 17,500	
Location:	All county signal locations					
Description:	Installation of backplates at signalized intersections	RW				
DES#:	1500397	CN	HSIP		\$ 74,025	
=			Local		\$ 8,225	
Allied Projects:		TOTAL	\$ -	\$ -	\$ 99,750	\$ -

Summary of Programmed Expenditures for Monroe County

Funding Source		Fiscal Year				
		2014	2015	2016	2017	TOTAL
STP	Annual Allocation	\$ -	\$ 1,781,000	\$ -	\$ 2,562,050	\$ 4,343,050
	Prior Year Balance	\$ -	\$ -	\$ -	\$ 529,354	\$ 529,354
TE	Annual Allocation	\$ 1,500,000	\$ 430,000	\$ -	\$ -	\$ 1,930,000
	Prior Year Balance	\$ -	\$ -	\$ -	\$ -	\$ -
TAP	Annual Allocation	\$ -	\$ 158,800	\$ 146,049	\$ -	\$ 304,849
	Prior Year Balance	\$ -	\$ -	\$ 68,038	\$ -	\$ 68,038
HSIP	Annual Allocation	\$ -	\$ -	\$ 74,025	\$ -	\$ 74,025
	Prior Year Balance	\$ -	\$ -	\$ -	\$ -	\$ -
BR	Annual Allocation	\$ 71,614	\$ -	\$ 66,106	\$ -	\$ 137,720
LOCAL	-----	\$ 962,332	\$ 1,404,250	\$ 73,533	\$ 772,851	\$ 3,212,966
TOTAL		\$ 2,533,946	\$ 3,774,050	\$ 427,751	\$ 3,864,255	\$ 10,600,002

Programmed Projects: City of Bloomington

City of Bloomington Projects		Funding Source	Fiscal Year			
			2014	2015	2016	2017
Project:	17th St. & Arlington Rd. Roundabout					
Location:	Intersection of Arlington Road, W. 17th Street and N. Monroe Street	PE				
Description:	Replacement of "K" intersection with a modern roundabout to serve this intersection of three streets to improve safety and facilitate better traffic flow	RW				
DES#:	0900216	STP	\$ 3,430,000			
Support:	L RTP	Local	\$ 857,500			
Allied Projects:	Crestline Development, Vernal Pike & Crescent Rd.	TOTAL	\$ 4,287,500	\$ -	\$ -	\$ -



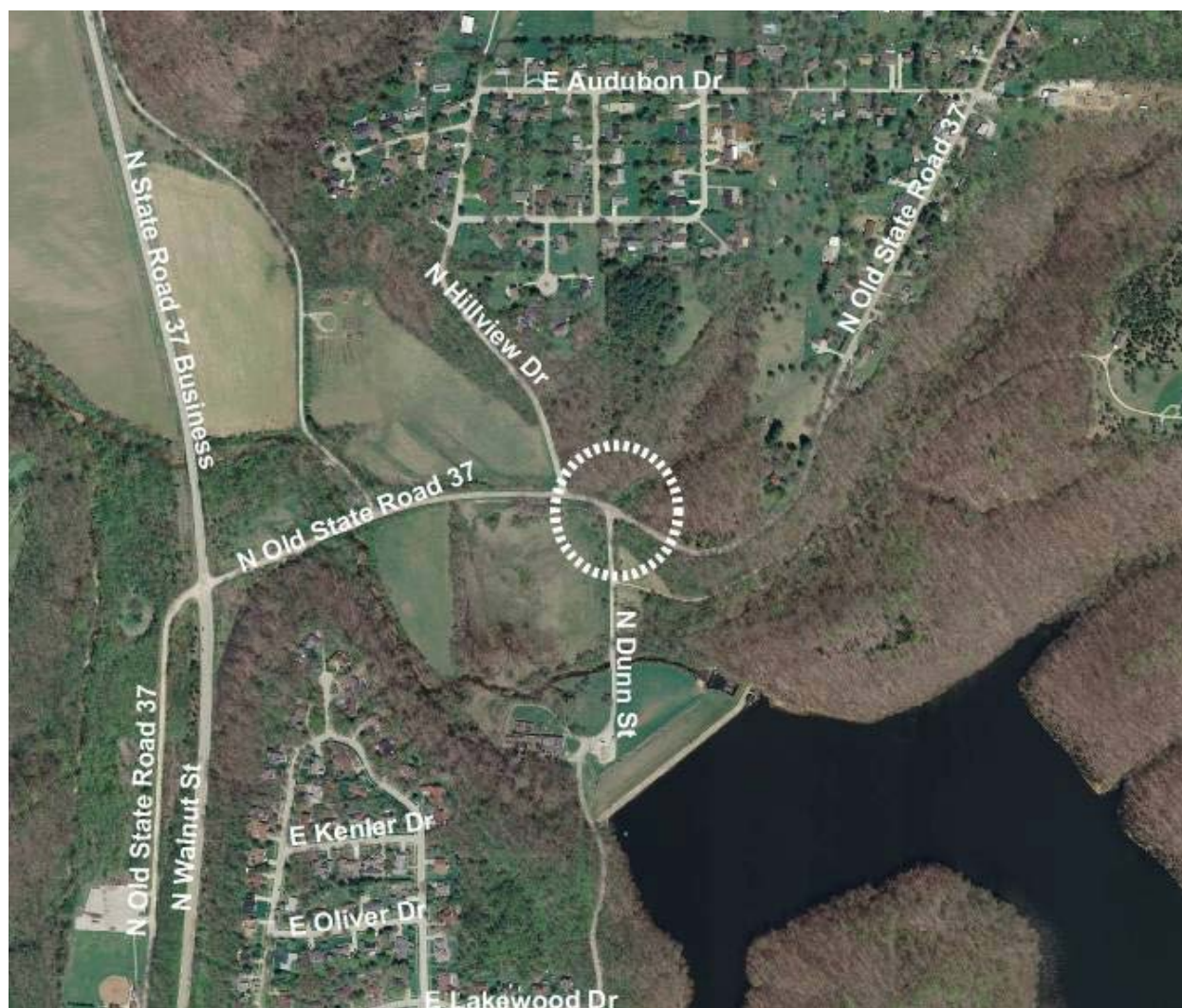
Programmed Projects: City of Bloomington

City of Bloomington Projects		Funding Source	Fiscal Year			
			2014	2015	2016	2017
Project:	17th St. & Jordan Ave.					
Location:	Intersection of E 17th Street and N. Jordan Avenue	SE				
Description:	Improve vertical geometry and sight distance at the intersection and on approaches	RW				
DES#:	0901710	STP 2015		\$ 434,468		
Support:	L RTP	STPflex 2015		\$ 251,532		
		Local		\$ 171,500		
Allied Projects:	17th and Fee Intersection Realignment, SR45/46 Bypass	TOTAL	\$ -	\$ 857,500	\$ -	



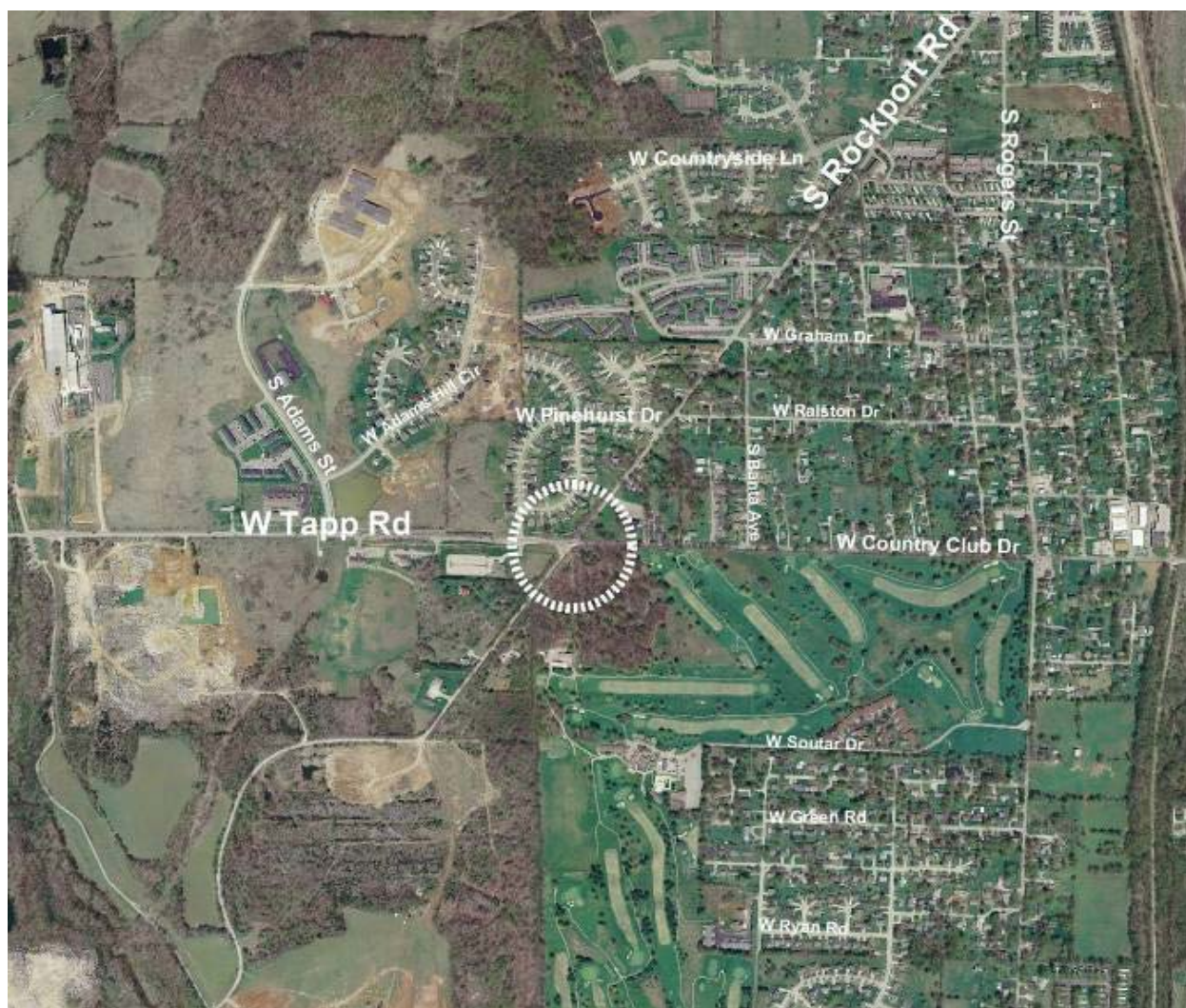
Programmed Projects: City of Bloomington

City of Bloomington Projects		Funding Source	Fiscal Year			
			2014	2015	2016	2017
Project:	Old SR 37 & Dunn St. Intersection Improvements	STP Local				
Location:	At the intersection of Old SR 37 & Dunn St.					
Description:	Improve horizontal and vertical geometry and sight distance at the intersection and on approaches	STP HSIP Local			\$ 100,000 \$ 25,000	
DES#:	1297060	NO Balance			\$ 171,658 \$ 1,524,813	
Support:	L RTP				\$ 212,338	
Allied Projects:	Proposed development on Old SR 37	TOTAL	\$ -	\$ -	\$ 2,033,809	\$ -



Programmed Projects: City of Bloomington

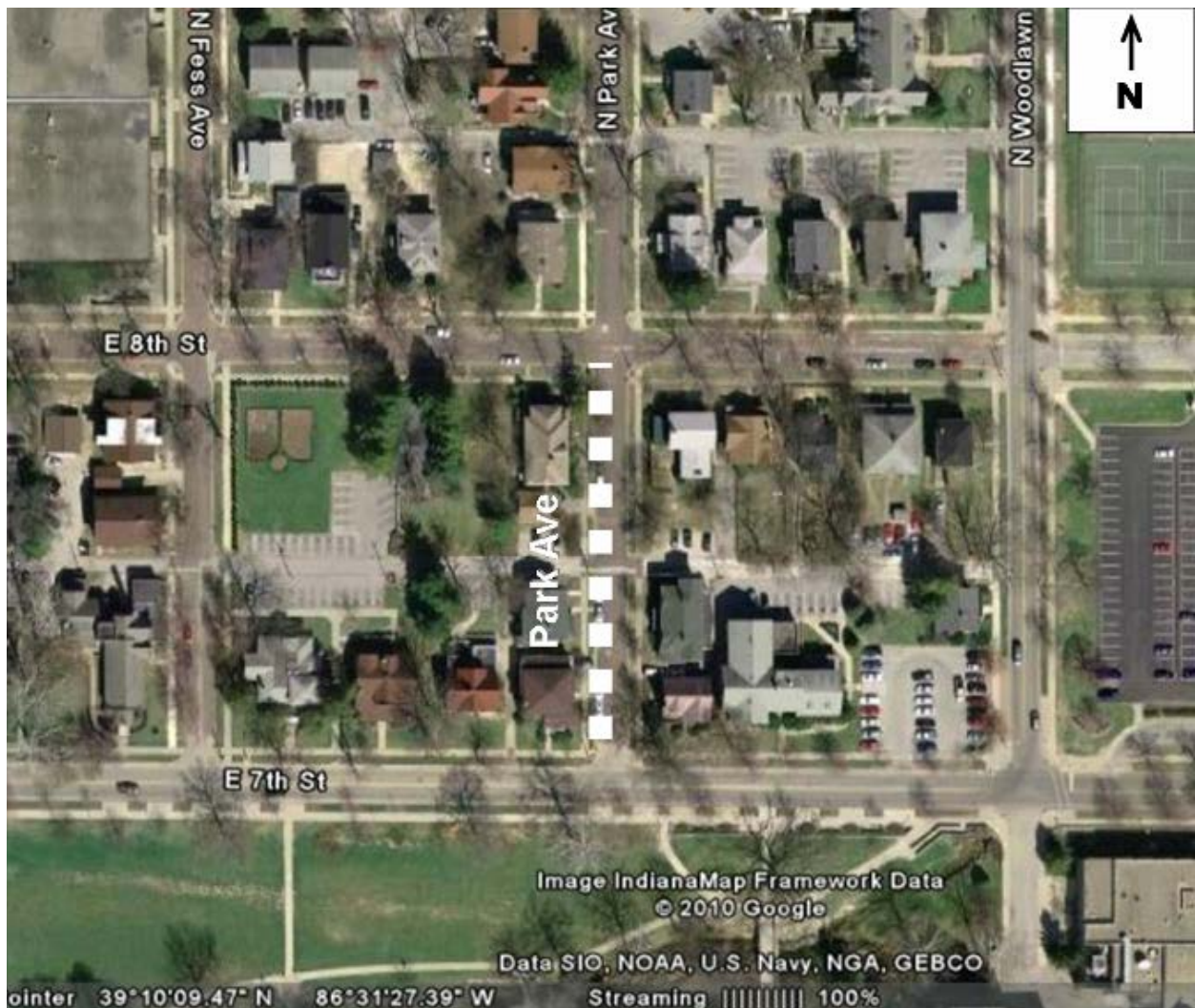
City of Bloomington Projects		Funding Source	Fiscal Year			
			2014	2015	2016	2017
Project:	Tapp Rd & Rockport Rd Intersection	STP Local		\$ 421,200		
Location:	At the intersection of Tapp Rd/Country Club Dr. and Rockport Rd.			\$ 105,300		
Description:	Intersection improvements to correct a skew, improve sight distance & geometry and add bicycle and pedestrian facilities	STP Local			\$ 600,000	
DES#:	0901730	STP Local			\$ 150,000	
Support:	L RTP, BBPTGSP					
Allied Projects:	Tapp/Adams Roundabout, Rogers/Country Club Intersection Improvements	TOTAL	\$ -	\$ 526,500	\$ 750,000	\$ -



Programmed Projects: City of Bloomington

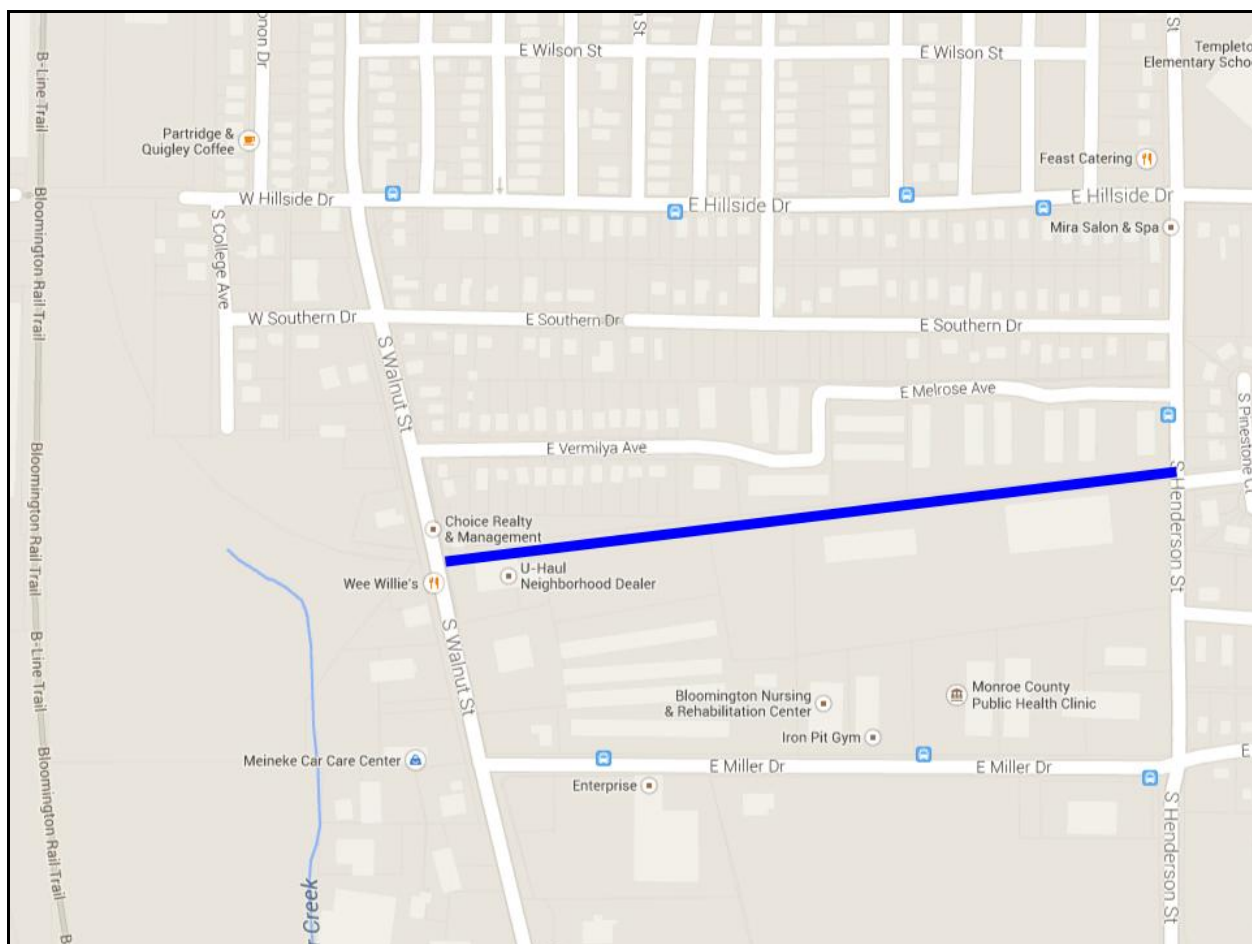
City of Bloomington Projects		Funding Source	Fiscal Year			
			2014	2015	2016	2017
Project:	University Courts Brick St. Restoration					
Location:	Park Avenue from 7th St to 8th St. (~.1mi)	PE				
Description:	Phased restoration of brick streets in the University Courts Historic District including 8th St. intersection and replacement of sidewalks and curbing	RW				
DES#:	0902258	TE*	\$ 130,000			
Support:	Historic Survey	Local	\$ 134,354			
Allied Projects:		TOTAL	\$ 264,354	\$ -	\$ -	\$ -

*TE funds were awarded through the local transportation enhancements program



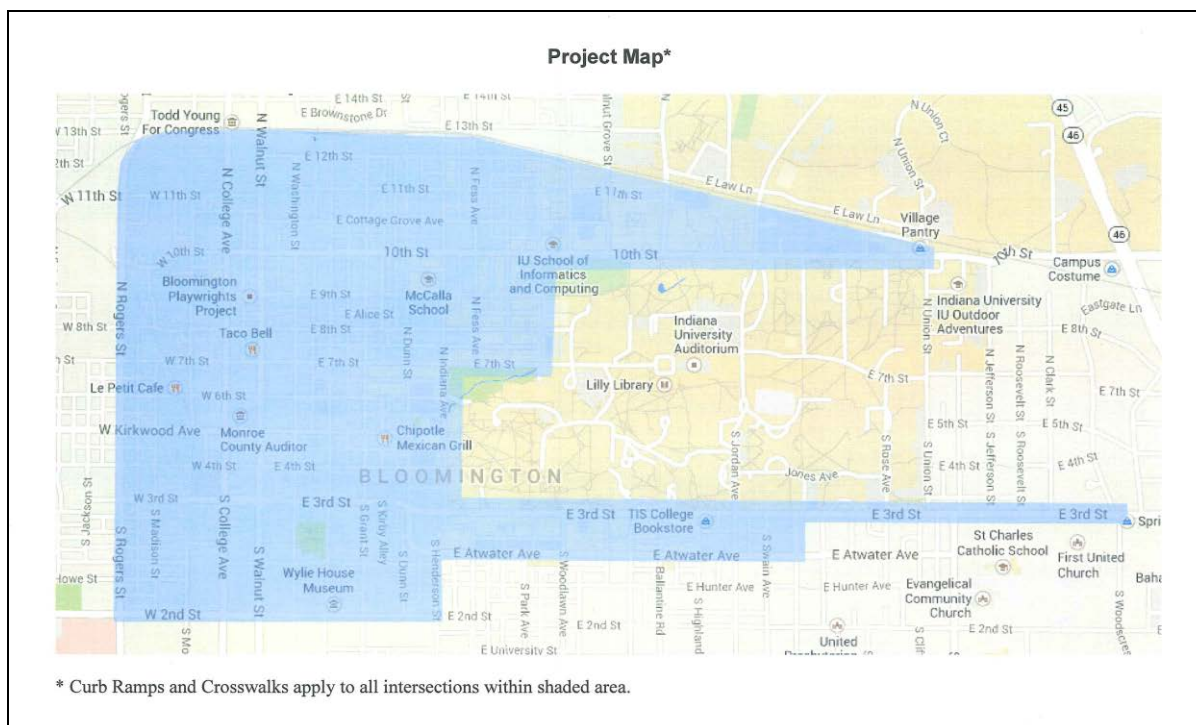
Programmed Projects: City of Bloomington

City of Bloomington Projects		Funding Source	Fiscal Year			
			2014	2015	2016	2017
Project:	Black Lumber Trail spur	STP 2015 Local		\$ 64,000		
Location:	Henderson Street to Walnut Street			\$ 16,000		
Description:	Construction of a multi-use trail for non-motorized use	RW				
DES#:	1382429	STP 2016 Local			\$ 406,866	
Support:	BATGSP, PMP				\$ 101,717	
Allied Projects:	B-Line Trail, B-Line Trail Switchyard	TOTAL	\$ -	\$ 80,000	\$ 508,583	\$ -

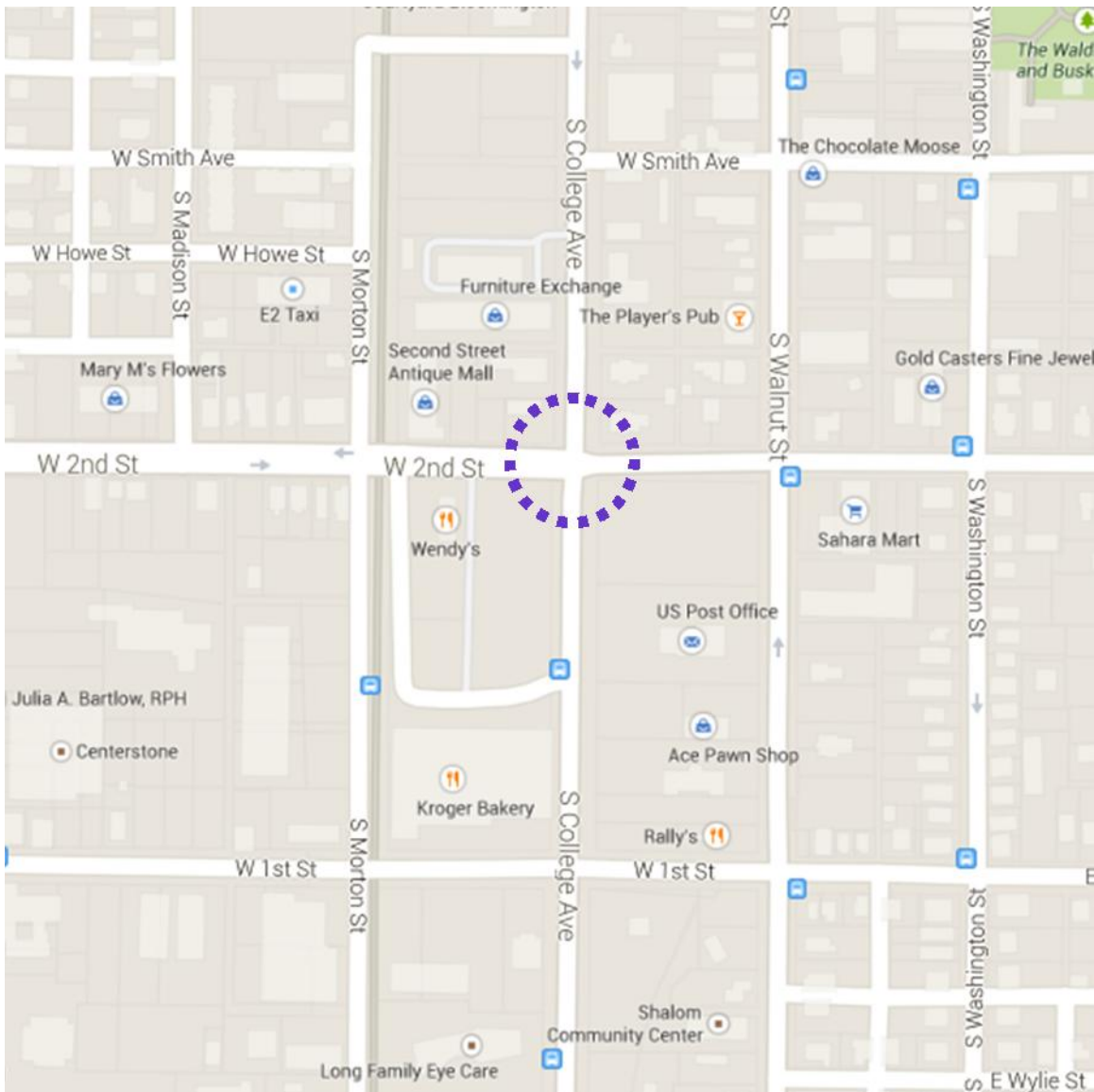


Programmed Projects: City of Bloomington

City of Bloomington Projects		Funding Source	Fiscal year			
			2014	2015	2016	2017
Project:	Downtown Intersection Improvements	<div> <div>IND</div> <div>ADA</div> <div>CH</div> </div>				
Location:	Downtown Bloomington					
Description:	Retrofitting or reconstructing intersection curb ramps to ensure compliance with ADA, (Rogers St., Indiana RR tracks, Indiana Ave., and 2nd St.) and the 3rd St./Awater and 10th St corridors through IU					
DES#	1400166		HSIP			\$ 423,720
Support:	ADA Transition Plan		Local			\$ 47,080
Allied Projects:		TOTAL	\$ -	\$ -	\$ -	\$ 470,800

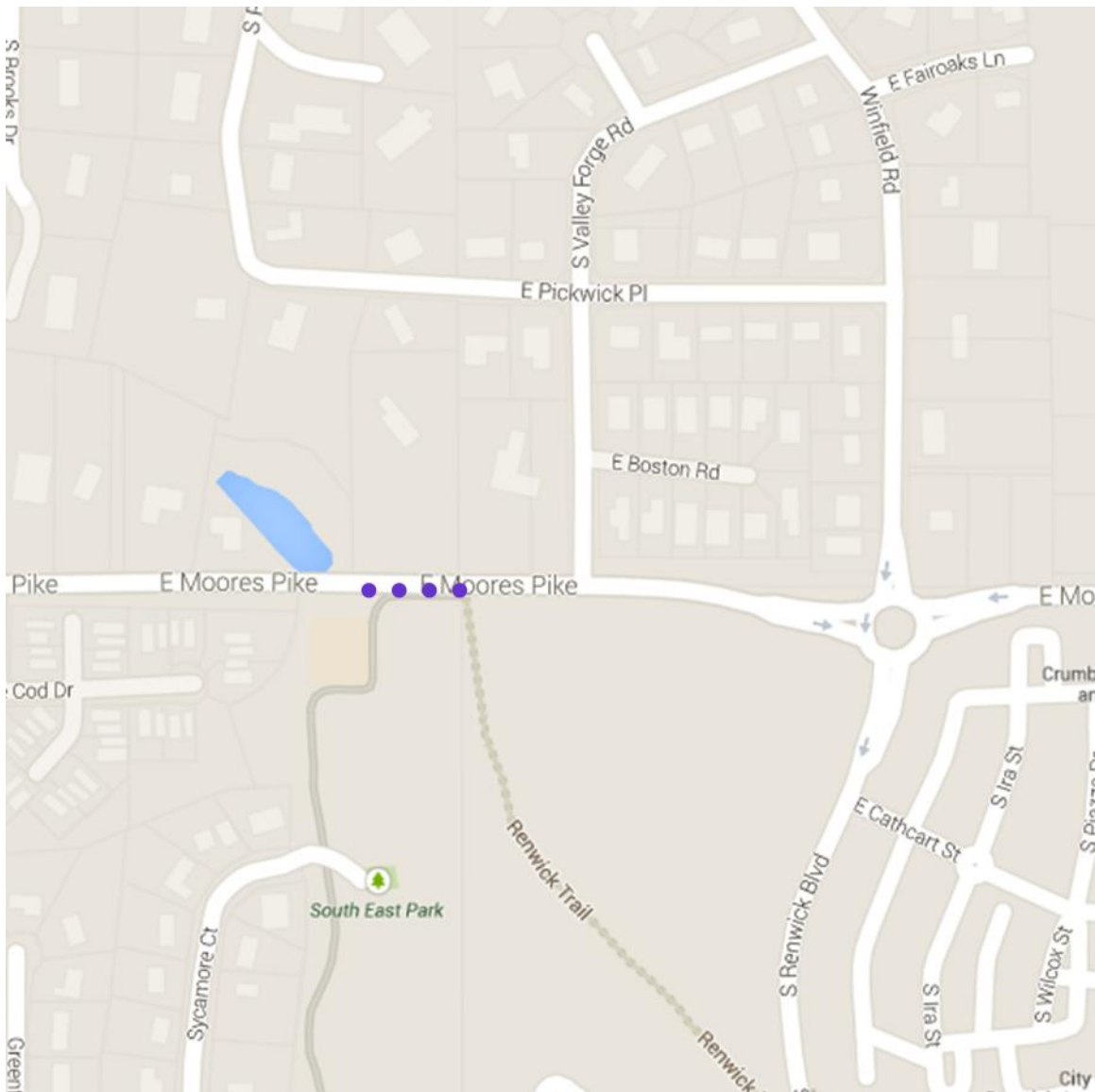


City of Bloomington Projects		Funding Source	Fiscal year			
			2014	2015	2016	2017
Project:	2nd & College Signal Replacement	PE				
Location:	2nd St. & College Ave. Intersection	RW				
Description:	Signal replacement and upgrade	CN	STP Balance			\$ 165,000
DES#	1500376	Local				\$ 41,250
Support:	L RTP, Crash Report					
Allied Projects:		TOTAL	\$ -	\$ -	\$ -	\$ 206,250



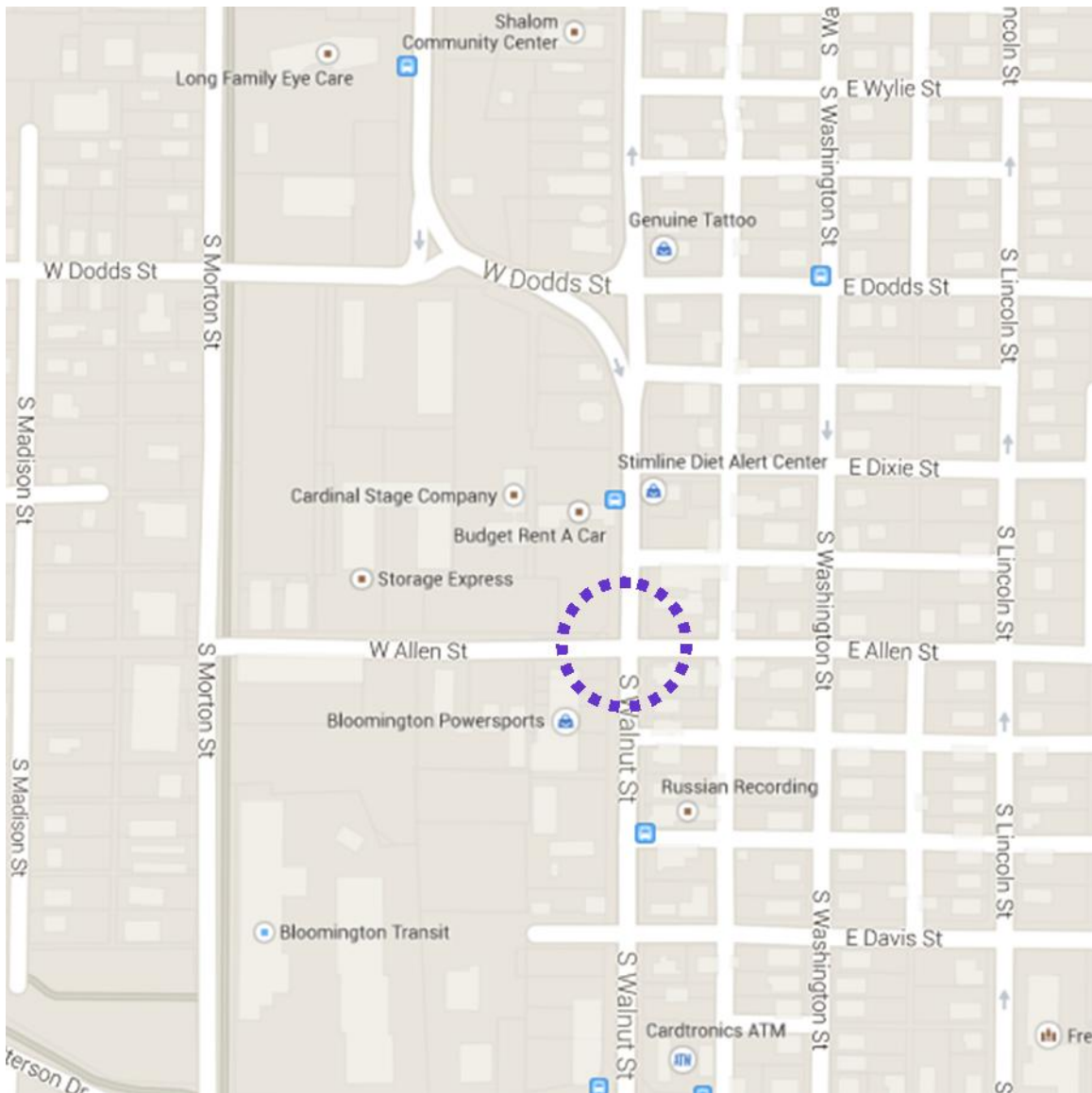
Amended: April 10, 2015

City of Bloomington Projects		Funding Source	Fiscal year			
			2014	2015	2016	2017
Project:	Moore's Pike Guardrail					
Location:	200 feet west of Valley Forge Road to 400 west of Valley Forge Road on south side of Moores Pike	PE				
Description:	Guardrail installation	RW				
DES#	1500377	CN	STP			\$ 6,884
Support:			HSIP			\$ 28,116
Allied Projects:			Local			\$ 4,845
		TOTAL	\$ -	\$ -	\$ -	\$ 39,845

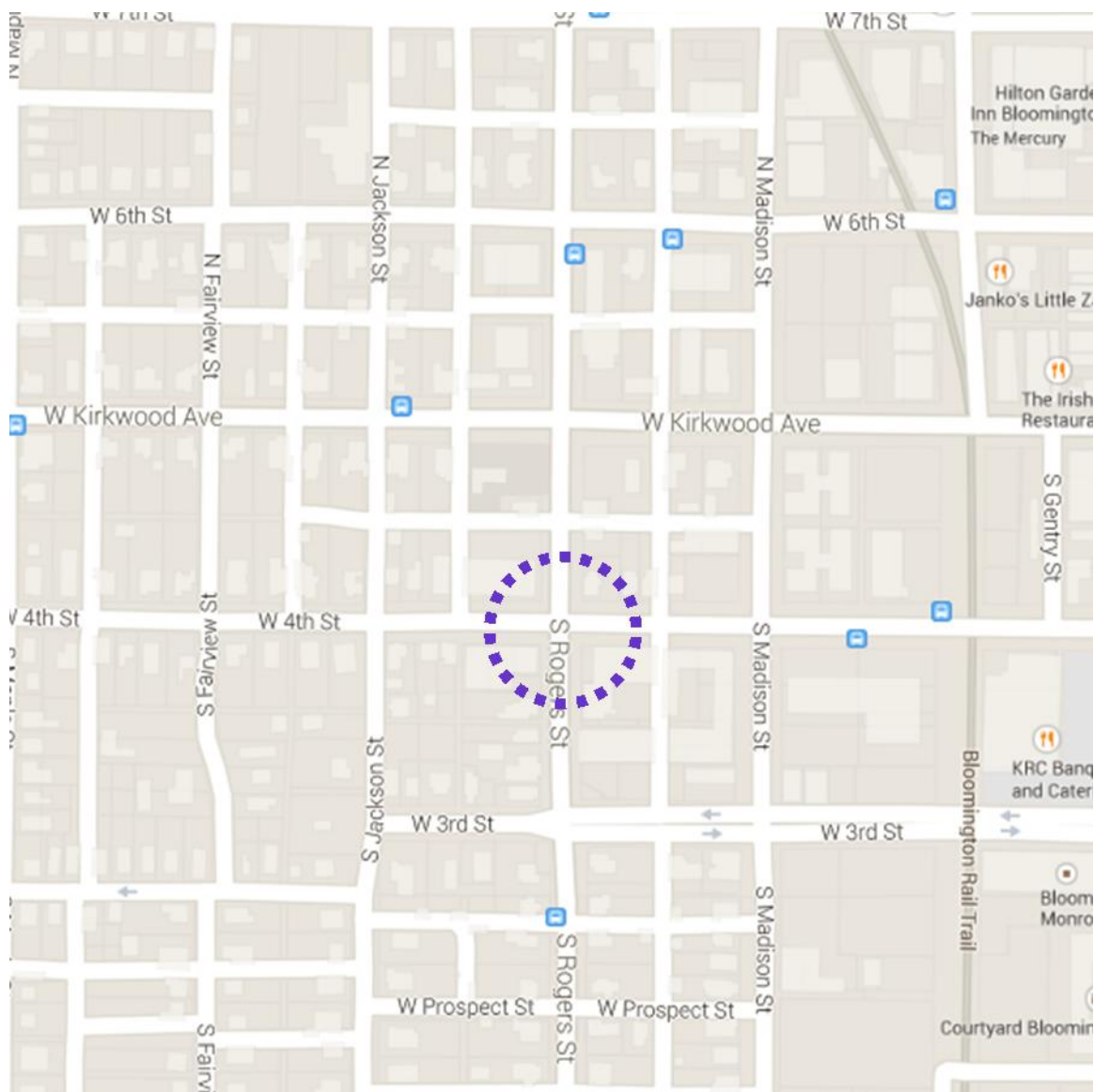


Fiscal Year 2014 – 2017 Transportation Improvement Program
 Bloomington/Monroe County Metropolitan Planning Organization

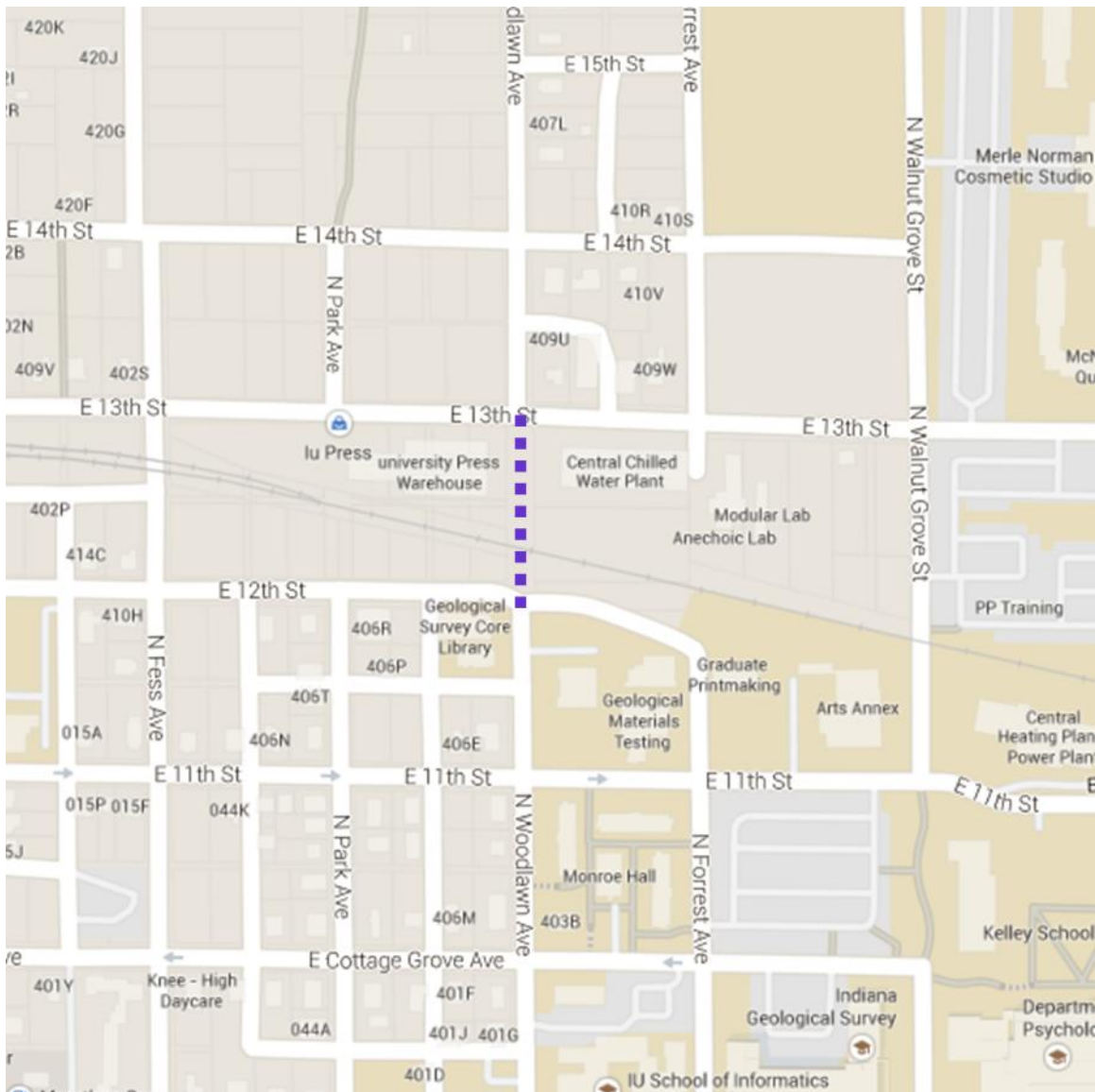
City of Bloomington Projects		Funding Source	Fiscal year			
			2014	2015	2016	2017
Project:	Allen St. & Walnut St. RRFB					
Location:	Intersection of Allen St. & Walnut St.	PE				
Description:	Installation of rectangular rapid flashing beacon (RRFB) at the intersection of Allen St. and Walnut St.	RW				
DES#	1500378	STP				\$ 6,100
Support:	LRTP, Bikeways Implementation Plan	HSIP				\$ 18,900
		Local				\$ 3,625
Allied Projects:		TOTAL	\$ -	\$ -	\$ -	\$ 28,625



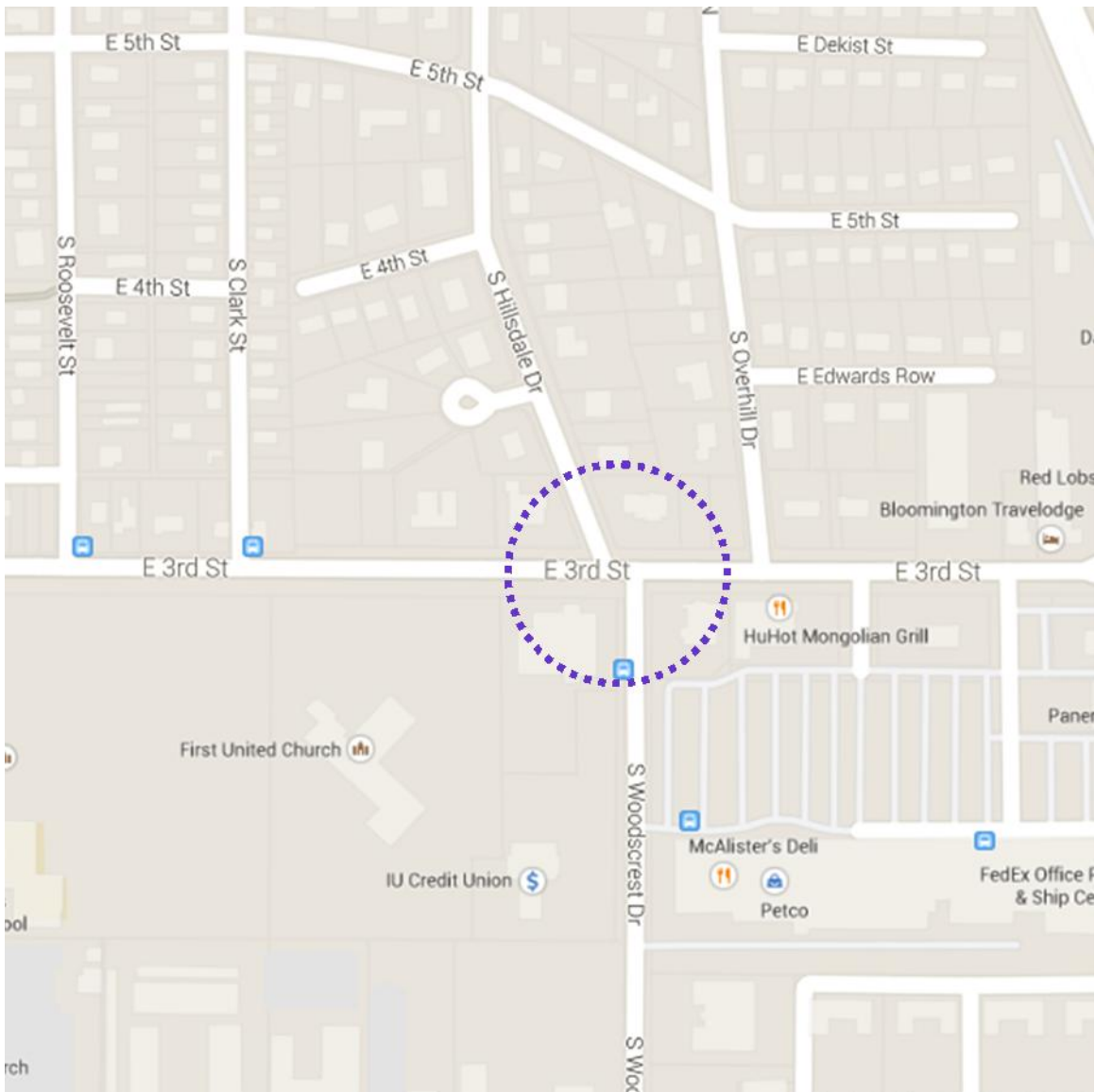
City of Bloomington Projects		Funding Source	Fiscal year			
			2014	2015	2016	2017
Project:	4th St. & Rogers St. Pedestrian Island	PE				
Location:	4th St. & Rogers St. intersection	RW				
Description:	Installation of a pedestrian refuge island at the intersection of 4th St. & Rogers St.	STP				\$ 38,432
DES#	1500379	HSIP				\$ 36,568
Support:	L RTP, Bikeways Implementation Plan	Local				\$ 13,671
Allied Projects:		TOTAL				\$ 88,671



City of Bloomington Projects		Funding Source	Fiscal year			
			2014	2015	2016	2017
Project:	Woodlawn Railroad Crossing					
Location:	Railroad crossing at Woodlawn Ave. between 12th & 13th Streets	PE				
Description:	Construction of at grade railroad crossing	RW				
DES#	1500380	STP Local			395,118 98,780	
Support:						
Allied Projects:		TOTAL			\$ 493,898	\$ -

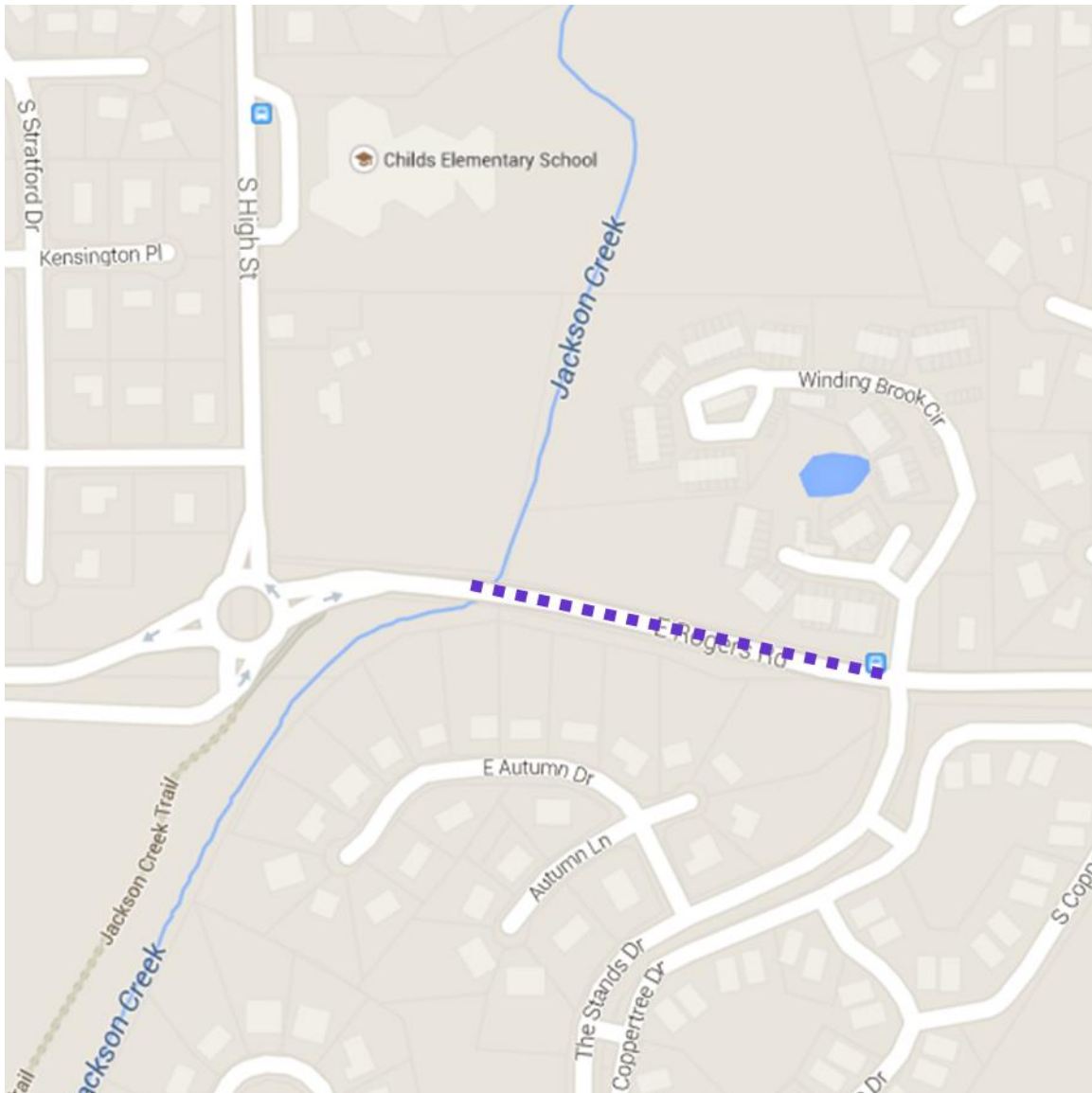


City of Bloomington Projects		Funding Source	Fiscal year			
			2014	2015	2016	2017
Project:	3rd & Woodcrest Signal Replacement					
Location:	Intersection of 3rd St. & Woodcrest Dr.	PE				
Description:	Signal and curb ramp upgrade	RW				
DES#	1500381	STP				\$ 215,000
Support:	LRTP, Crash Report	Local				\$ 53,750
Allied Projects:		TOTAL				\$ 268,750

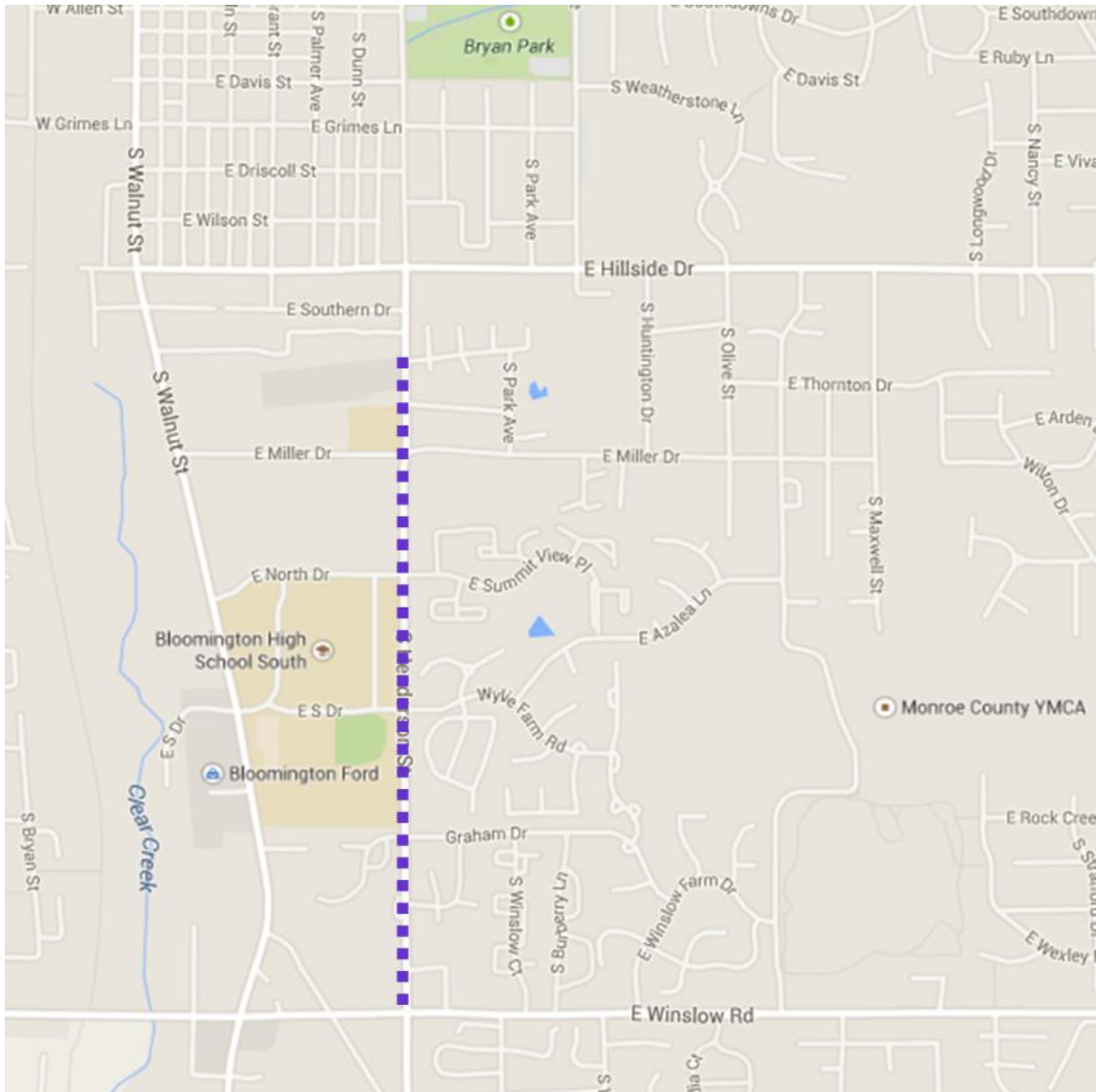


Amended: April 10, 2015

City of Bloomington Projects		Funding Source	Fiscal year			
			2014	2015	2016	2017
Project:	E. Rogers Rd. Sidepath	STP				\$ 21,592
Location:	E. Rogers Rd. at the Jackson Creek bridge to The Stands Dr.	STP Balance				\$ 38,408
		Local				\$ 15,000
Description:	Construction of sidepath along E. Rogers Rd. and pedestrian enhancements across E. Rogers at The Stands Dr.	RW				
DES#	1500382	CN				
Support:	BPTGSP, LRTP					
Allied Projects:		TOTAL				\$ 75,000

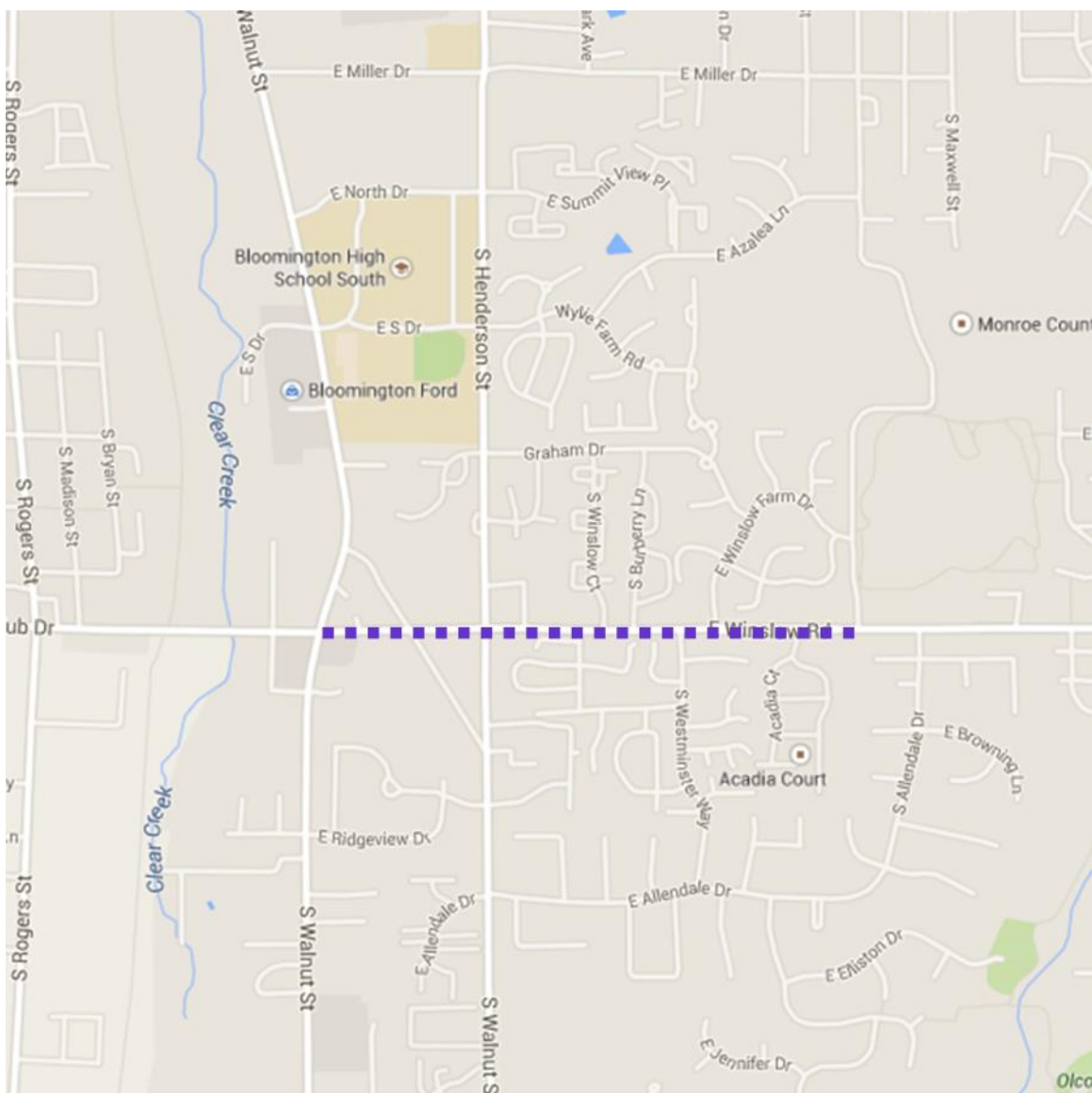


City of Bloomington Projects		Funding Source	Fiscal year			
			2014	2015	2016	2017
Project:	South Henderson Sidepath	TAP				\$ 154,049
Location:	S. Henderson from eastern termini of Black Lumber Trail to Winslow Rd.	STP Balance				\$ 5,951
		Local				\$ 40,000
Description:	Construction of 8 foot sidepath between the Black Lumber Trail and Winslow Road. Pedestrian enhancements also included at Henderson St., Miller Dr., South Dr., North Dr., & Graham Dr.	RW				
DES#	1500384	CN				
Support:	BPTGSP					
Allied Projects:	Black Lumber Trail & Winslow Rd. Sidepath	TOTAL				\$ 200,000



Amended: April 10, 2015

City of Bloomington Projects		Funding Source	Fiscal year			
			2014	2015	2016	2017
Project:	Winslow Road Sidepath	STP				\$ 120,000
Location:	Winslow Rd. from S. Walnut St. to S. Highland Ave.	Local				\$ 30,000
Description:	Construction of 8 foot sidepath					
DES#	1500383					
Support:	L RTP, BPTGSP					
Allied Projects:		TOTAL				\$ 150,000



Summary of Programmed Expenditures for City of Bloomington

Funding Source		Fiscal Year				
		2014	2015	2016	2017	TOTAL
STP	Annual Allocation	\$ 3,430,000	\$ 1,171,200	\$ 1,673,642	\$ 21,592	\$ 6,296,434
	Prior Year Balance	\$ -	\$ -	\$ -	\$ 595,775	\$ 595,775
TE	Annual Allocation	\$ 130,000	\$ -	\$ -	\$ -	\$ 130,000
	Prior Year Balance	\$ -	\$ -	\$ -	\$ -	\$ -
TAP	Annual Allocation	\$ -	\$ -	\$ -	\$ -	\$ -
	Prior Year Balance	\$ -	\$ -	\$ -	\$ -	\$ -
HSIP	Annual Allocation	\$ -	\$ -	\$ -	\$ 83,584	\$ 83,584
	Prior Year Balance	\$ -	\$ -	\$ 1,524,813	\$ -	\$ 1,524,813
Bridge	Annual Allocation	\$ -	\$ -	\$ -	\$ -	\$ -
Local		\$ 991,854	\$ 292,800	\$ 489,055	\$ 168,092	\$ 1,941,801
TOTAL		\$ 4,551,854	\$ 1,464,000	\$ 3,687,510	\$ 869,043	\$ 10,572,407

Programmed Projects: Bloomington Transit

Bloomington Transit Projects			Fiscal Year			
			2014	2015	2016	2017
Project:	25 Foot Buses	FTA 5307	\$ 67,500			
Description:	Purchase of a new 25 foot bus	Local	\$ 16,875			
DES#:	1172616					
Support:	LRTP, TDP	TOTAL	\$ 84,375	\$ -	\$ -	\$ -

Bloomington Transit Projects			Fiscal Year			
			2014	2015	2016	2017
Project:	40 Foot Buses	FTA 5307	\$ 336,000	\$ 704,000	\$ 1,081,600	
Description:	Purchase of 40 foot buses	FTA 5309				\$ 1,499,819
		STP			\$ 360,000	
		STP Balance				\$ 1,440,000
DES#:	1400645, 1382501, 1382499, 1382500, 1500400, 1500401	Local	\$ 74,667	\$ 156,444	\$ 384,356	\$ 734,955
Support:	LRTP, TDP	TOTAL	\$ 410,667	\$ 860,444	\$ 1,825,956	\$ 3,674,774

Bloomington Transit Projects			Fiscal Year			
			2014	2015	2016	2017
Project:	BT Access Vehicles	FTA 5307	\$82,115	\$ 85,400	\$ 90,523	
Description:	Replacement of 1 2001 and 1 2002 BT Access vans in 2013; 2 2008 BT Access vans in 2014; 2 2008 BT Access vans in 2015; 2 expansion BT Access vans in 2016; and 2 2012 BT Access vans in 2017	Local	\$20,529	\$ 21,350	\$ 22,631	
DES#:	1172619, 1172620, 1382502, 1382503					
Support:	LRTP, TDP	TOTAL	\$ 102,644	\$ 106,750	\$ 113,154	\$ -

Bloomington Transit Projects			Fiscal Year			
			2014	2015	2016	2017
Project:	Fare Collection Equipment	FTA 5307/5309	\$ 12,000			\$ 1,200,000
Description:	Replace a 2002 portable fare revenue auditor in 2014 which securely stores fare revenues from the bus to the counting room	Local	\$ 3,000			\$ 300,000
DES#:	1382516					
Support:	TDP, ITS	TOTAL	\$ 15,000	\$ -	\$ -	\$ 1,500,000

Bloomington Transit Projects			Fiscal Year			
			2014	2015	2016	2017
Project:	Maintenance	FTA 5307	\$ 100,000	\$ 104,000	\$ 140,000	\$ 145,600
Description:	Capitalize the purchase of engine/ transmission rebuilds & tires for BT fixed route vehicles.	Local	\$ 25,000	\$ 26,000	\$ 35,000	\$ 36,400
DES#:	1172624, 1172625, 1382504, 1382505					
Support:	LRTP, TDP	TOTAL	\$ 125,000	\$ 130,000	\$ 175,000	\$ 182,000

Programmed Projects: Bloomington Transit

Bloomington Transit Projects			Fiscal Year			
			2014	2015	2016	2017
Project:	Operational Assistance	FTA 5307	\$ 1,702,313	\$ 1,982,617	\$ 2,022,269	\$ 2,103,969
Description:	Federal, State and Local Assistance for the operation of BT's fixed route & Access Service including late weeknight service.	FTA 5316	\$ 286,047	\$ -	\$ 103,144	\$ 104,176
		PMTF	\$ 2,546,235	\$ 2,648,084	\$ 2,471,308	\$ 2,520,734
		Local	\$ 1,647,127	\$ 1,713,012	\$ 1,833,692	\$ 1,870,366
		Fares	\$ 1,609,939	\$ 1,674,336	\$ 1,639,233	\$ 1,672,017
DES#:	1172613, 1172614, 1382506, 1382507					
Support:	LRTP, GPP, TDP	TOTAL	\$ 7,791,661	\$ 8,018,049	\$ 8,069,646	\$ 8,271,262

Bloomington Transit Projects			Fiscal Year			
			2014	2015	2016	2017
Project:	Passenger Shelters	FTA 5307	\$ 25,600			\$ 35,360
Description:	Purchase of 6 new shelters/benches in 2014 and 6 more in 2016.	Local	\$ 6,400			\$ 8,840
DES#:	1172628, 1382508					
Support:	LRTP, GPP, TDP	TOTAL	\$ 32,000	\$ -	\$ -	\$ 44,200

Bloomington Transit Projects			Fiscal Year			
			2014	2015	2016	2017
Project:	Support & Maintenance Vehicles	FTA 5307	\$ 68,000	\$ 70,720	\$ 24,000	
Description:	Purchase support & maintenance vehicles	Local	\$ 17,000	\$ 17,680	\$ 6,000	
DES#:	1382509, 1382510, 1382511					
Support:	GPP, TDP, LRTP	TOTAL	\$ 85,000	\$ 88,400	\$ 30,000	\$ -

Bloomington Transit Projects			Fiscal Year			
			2014	2015	2016	2017
Project:	Paratransit AVL & Scheduling Technology	FTA 5307		\$ 120,000		
Description:	Replace the existing 2002 paratransit scheduling software & purchase scheduling software with AVL technology	Local		\$ 30,000		
DES#:	1382517					
Support:	GPP, TDP, LRTP	TOTAL	\$ -	\$ 150,000	\$ -	\$ -

Bloomington Transit Projects			Fiscal Year			
			2014	2015	2016	2017
Project:	Portable Maintenance Lifts	FTA 5307	\$ 33,600			
Description:	Purchase a complete set of portable maintenance lifts for one BT vehicle maintenance bay.	Local	\$ 8,400			
DES#:	1382518					
Support:	GPP, TDP, LRTP	TOTAL	\$ 42,000	\$ -	\$ -	\$ -

Programmed Projects: Bloomington Transit

Bloomington Transit Projects		Fiscal Year			
		2014	2015	2016	2017
Project:	Fuel Usage Hardware/Software	FTA 5307		\$ 20,000	
Description:	Replace the 1997 fuel usage hardware/software that is used to track, report and monitor fuel usage for both the BT and IU Campus Buses	Local		\$ 5,000	
DES#:	138519				
Support:	GPP, TDP, LRTP	TOTAL	\$ -	\$ 25,000	\$ -

Bloomington Transit Projects		Fiscal Year			
		2014	2015	2016	2017
Project:	Paratransit Security Camera Technology	FTA 5307		\$ 32,000	
Description:	Equip all paratransit vehicles with security cameras for purposes of investigating accidents and customer incidents	Local		\$ 8,000	
DES#:	1382512				
Support:	GPP, TDP, LRTP	TOTAL	\$ -	\$ -	\$ 40,000

Bloomington Transit Projects		Fiscal Year			
		2014	2015	2016	2017
Project:	Bus Radio Communications Technology	FTA 5307			\$ 160,000
Description:	Replace the 2005 bus radio communications system in 2017. This would provide replacement radios for all fixed route buses.	Local			\$ 40,000
DES#:	1382513				
Support:	GPP, TDP, LRTP	TOTAL	\$ -	\$ -	\$ 200,000

Bloomington Transit Projects		Fiscal Year			
		2014	2015	2016	2017
Project:	Mobility Management Program	FTA 5317	\$ 22,500		
Description:	Volunteer driver program & vouchers for accessible taxi service.	Local	\$ 7,500		
DES#:	1298241				
Support:		TOTAL	\$ 30,000	\$ -	\$ -

Bloomington Transit Projects		Fiscal Year			
		2014	2015	2016	2017
Project:	Mobility Management Program	FTA 5317	\$ 25,000	\$ 25,000	\$ 25,000
Description:	Consumer education on area transportation options and provision of vouchers for accessible taxi service	Local	\$ 10,000	\$ 10,000	\$ 10,000
DES#:	1383559				
Support:	Coordinated Human Services Plan and Des#1298241	TOTAL	\$ 35,000	\$ -	\$ 35,000

Summary of Programmed Expenditures for Bloomington Transit

Funding Source	Fiscal Year				
	2014	2015	2016	2017	TOTAL
STP	\$ -	\$ -	\$ 360,000	\$ -	\$ 360,000
STP Prior Year Balance	\$ -	\$ -	\$ -	\$ 1,440,000	\$ 1,440,000
FTA 5307/5309	\$ 2,427,128	\$ 3,086,737	\$ 3,366,392	\$ 5,144,748	\$ 14,025,005
FTA 5311	\$ -	\$ -	\$ -	\$ -	\$ -
FTA 5316	\$ 286,047	\$ -	\$ -	\$ 104,176	\$ 390,223
FTA 5317	\$ 47,500	\$ -	\$ -	\$ 25,000	\$ 72,500
PMTF	\$ 2,546,235	\$ 2,648,084	\$ 2,471,308	\$ 2,520,734	\$ 10,186,361
Farebox	\$ 1,609,939	\$ 1,674,336	\$ 1,639,233	\$ 1,672,017	\$ 6,595,525
Local	\$ 1,761,831	\$ 1,813,042	\$ 2,285,323	\$ 3,000,561	\$ 8,860,757
TOTAL	\$ 8,678,680	\$ 9,222,199	\$ 10,122,256	\$ 13,907,236	\$ 41,930,371

Programmed Projects: Rural Transit

Rural Transit Projects			Fiscal Year			
			2014	2015	2016	2017
Project:	Operating Budget	FTA 5311	\$ 713,651	\$ 742,139	\$ 816,353	\$ 897,988
Description:	Operating budget assistance. Monroe, Owen, Lawrence & Putnam Counties.	PMTF	\$ 310,875	\$ 323,310	\$ 355,641	\$ 391,205
		Local	\$ 507,711	\$ 528,019	\$ 580,821	\$ 638,903
DES#:	1382514, 1382515					
Support:	Coordinated Plan	TOTAL	\$ 1,532,237	\$ 1,593,468	\$ 1,752,815	\$ 1,928,096

Bloomington Transit Projects			Fiscal Year			
			2014	2015	2016	2017
Project:	Bus Maintenance	STP			\$ 150,000	
Description:	Rehabilitation and preventative maintenance of bus fleet in 2016	Local			\$ 37,500	
DES#:	1500402					
Support:		TOTAL	\$ -	\$ -	\$ 187,500	\$ -

Summary of Programmed Expenditures for Rural Transit

Funding Source	Fiscal Year				
	2014	2015	2016	2017	TOTAL
STP	\$ -	\$ -	\$ 150,000	\$ -	\$ 150,000
FTA 5307/5309	\$ -	\$ -	\$ -	\$ -	\$ -
FTA 5311	\$ 713,651	\$ 742,139	\$ 816,353	\$ 897,988	\$ 3,170,131
FTA 5316	\$ -	\$ -	\$ -	\$ -	\$ -
FTA 5317	\$ -	\$ -	\$ -	\$ -	\$ -
PMTF	\$ 310,875	\$ 323,310	\$ 355,641	\$ 391,205	\$ 1,381,031
Farebox	\$ -	\$ -	\$ -	\$ -	\$ -
Local	\$ 507,711	\$ 528,019	\$ 618,321	\$ 638,903	\$ 2,292,954
TOTAL	\$ 1,532,237	\$ 1,593,468	\$ 1,790,315	\$ 1,928,096	\$ 6,844,116

Programmed Projects: Monroe County Community School Corporation

MCCSC Projects		Funding Source	Fiscal Year			
			2014	2015	2016	2017
Project:	Safe Routes to School Non-Infrastructure	SRTS	\$ 20,000	\$ 55,000		
Location:	Various					
Description:	Comprehensive education, encouragement & outreach activities aimed at increasing walking, biking & safety at 7 elementary schools					
DES#:	1173691					
Support:						
Allied Projects:		TOTAL:	\$ 20,000	\$ 55,000		

Summary of Programmed Expenditures: Monroe County Community School Corporation

Funding Source	2014	2015	2016	2017	TOTAL
SRTS	\$ 20,000	\$ 55,000	\$ -	\$ -	\$ 75,000
Local	\$ -	\$ -	\$ -	\$ -	\$ -
TOTAL	\$ 20,000	\$ 55,000	\$ -	\$ -	\$ 75,000

Appendix I: Abbreviations and Definitions List

A for a full listing of acronyms and definitions can be found online at:
www.bloomington.in.gov/Transportation_Acronym_Dictionary

ADA	Americans with Disabilities Act
BL	City of Bloomington
BMCMPPO	Metropolitan Planning Organization
CAC	Citizens Advisory Committee
BR	Bridge Replacement and Rehabilitation
BT	Bloomington Transit
CN	Construction
EJ	Environmental Justice
EV	Town of Ellettsville
FHWA	Federal Highway Administration
FTA	Federal Transit Administration
FY	Fiscal Year (for the TIP: July 1 through June 30)
HSIP	Highway Safety Improvement Program
IN	State of Indiana
INDOT	Indiana Department of Transportation
INSTIP	Indiana Statewide Transportation Improvement Program
ISP	Indiana State Police
IU	Indiana University
LPA	Local Public Agency
L RTP	Long Range Transportation Plan
MAP-21	Moving Ahead for Progress in the 21 st Century
MC	Monroe County
MPA	Metropolitan Planning Area
NHS	National Highway System
PC	Policy Committee
PE	Preliminary Engineering
PMTF	Public Mass Transportation Fund
RW	Right-of-Way
RT	Rural Transit
STP	Surface Transportation Program
TAC	Technical Advisory Committee
TA	Transportation Alternatives
TE	Transportation Enhancements
TIF	Tax Increment Financing District
TIP	Transportation Improvement Program
UAB	Urbanized Area Boundary
UPWP	Unified Planning Work Program

Appendix II: Complete Streets Compliance

Complete Streets Compliance of Local Projects					
LPA	Project	Brief Description	Compliant*	Exempt*	Not Applicable*
MC	Fullerton Pike/Gordon Pike/Rhorer Rd.	Road reconstruction and safety improvements, including bituminous pavement, curb, gutter, sidewalk, side path, bridges and drainage appurtenances. (0.32 miles long)	✓		
MC	Karst Farm Greenway (Phase I)	Preliminary engineering, Right-of-Way and construction of a multi-use trail for non-motorized use, including site amenities (~4.00 miles long)			✓
MC	Karst Farm Greenway (Phase IIa)	Preliminary engineering, Right-of-Way and construction of a multi-use trail for non-motorized use, including site amenities (~4.00 miles long)			✓
MC	Karst Farm Greenway (Phase 3)	Preliminary engineering, Right-of-Way and Construction of a multi-use trail for non-motorized use, including site amenities			✓
MC	Mt. Tabor Road Bridge #33	Bridge replacement and road realignment	✓		
MC	Bridge Inventory	Reinspection of all 137 structures over 20 feet in span length in accordance with the National Bridge Inspection Standards established by the Federal Highway Administration.			✓
BL	W. 2nd Street Feasibility Study	Study to evaluate alternatives and designs for corridor improvements to W. 2nd St. with emphasis on Walnut St to Patterson Dr. because of Bloomington Hospital	✓		
BL	17th St. & Arlington Rd. Roundabout	Replacement of "K" intersection with a modern roundabout to serve this intersection of three streets to improve safety and facilitate better traffic flow	✓		
BL	17th St. & Jordan Ave.	Improve vertical geometry and sight distance at the intersection and on approaches			✓
BL	Black Lumber Trail Spur	Construction of a multi-use trail for non-motorized use			✓
BL	Old SR 37 & Dunn St. Intersection Improvements	Improve horizontal and vertical geometry and sight distance at the intersection and on approaches		✓	
BL	Bloomington Bikeways Projects	Pavement marking for on-street bicycle facilities as outlined in the City's Bikeways Implementation Plan			✓
BL	Tapp Rd & Rockport Rd Intersection	Modernize intersection and upgrade from 4-way stop to signal	✓		
BL	University Courts Brick Street Restoration	Phased restoration of brick streets in the historic University Courts neighborhood			✓
BL	Downtown Pedestrian Improvements	Retrofitting or reconstructing intersection curb ramps to ensure compliance with ADA. (Rogers St., Indiana RR tracks, Indiana Ave., and 2nd St.) and the 3rd St./Atwater and 10th St. corridors through IU			✓
BL	Upgrade Signs (Zones 5-8) Phase 2	Replace outdated regulatory, warning, and guide signs to meet the Manual on Uniform Traffic Control Devices MUTCD) retroreflectivity requirements on roadways			✓

*Compliance with the Complete Streets Policy is determined by the Policy Committee at the time of adoption of this document or when new local projects are amended in to the Transportation Improvement Program

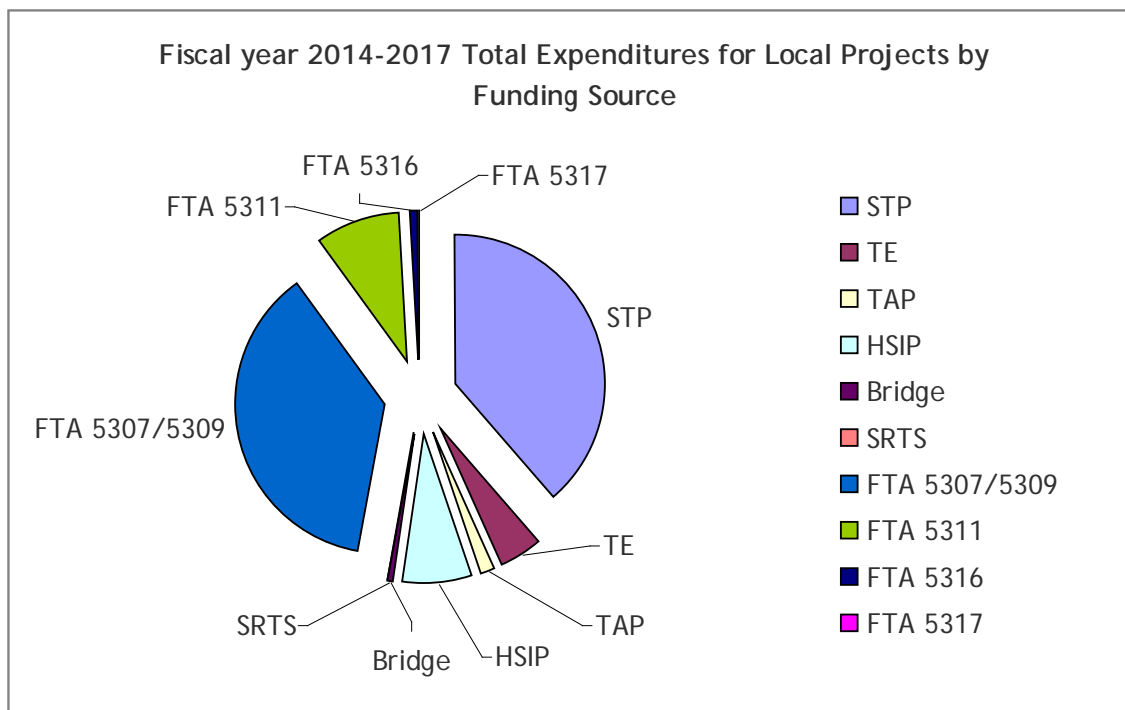
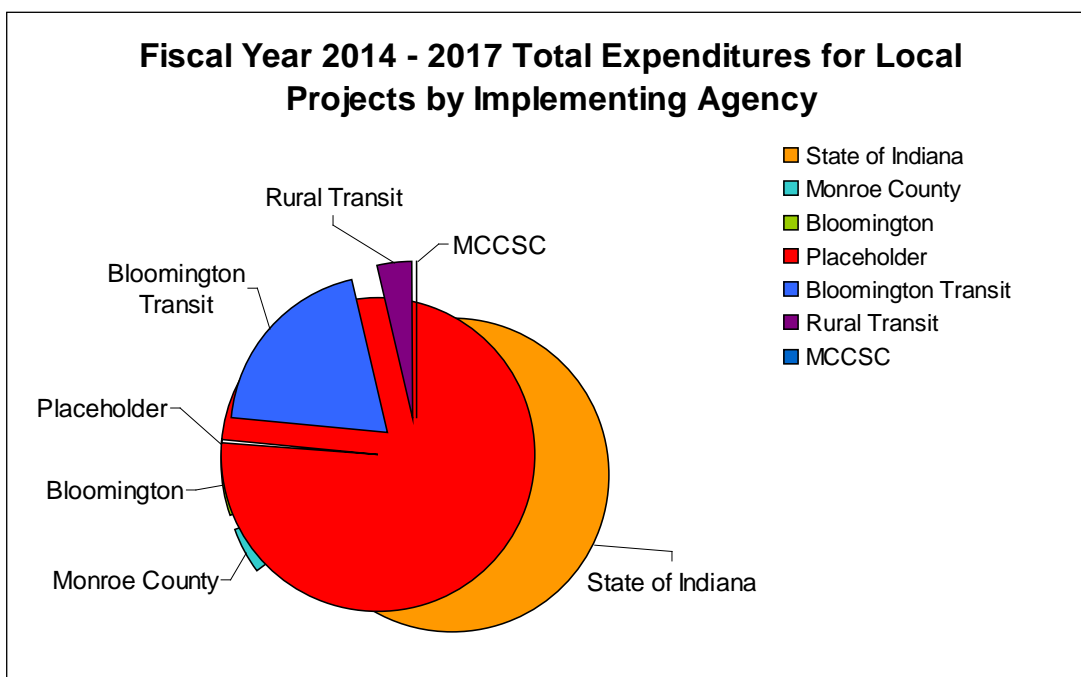
Appendix II continued: Complete Streets Compliance

Complete Streets Compliance of Local Projects					
LPA	Project	Brief Description	Compliant*	Exempt*	Not Applicable*
EV	Ellettsville Heritage Trail (Ph I)	Construction of a multi-use trail for non-motorized use, including site amenities.			✓
EV	Ellettsville Heritage Trail (Ph II)	Construction of a multi-use trail bridge for non-motorized use.			✓
RT	Operating Budget	Operating budget assistance. Monroe, Owen, Lawrence & Putnam Counties.			✓
BT	25 Foot Buses	Purchase of one new 25-foot bus			✓
BT	40 Foot Buses	Purchase of three 40-foot buses in 2015, three in 2016, and four in 2017			✓
BT	BT Access Vehicles	Replace three 2002 20-foot buses in 2015, three 2003 buses in 2016 and four 2003 buses in 2017			✓
BT	Fare Collection Equipment	Replace a 2002 portable fare revenue auditor in 2014 which securely stores fare revenues from the bus to the counting room			✓
BT	Maintenance	Capitalize the purchase of engine/transmission rebuilds & tires for BT fixed route vehicles.			✓
BT	Operational Assistance	Federal, State and Local Assistance for the operation of BT's fixed route & Access Service including late weeknight service.			✓
BT	Passenger Shelters	Purchase 5-10 passenger shelters for BT fixed route stops.			✓
BT	Support & Maintenance Vehicles	Purchase support & maintenance vehicles			✓
BT	Paratransit AVL & Schedule	Replace the existing 2002 paratransit scheduling software & purchase scheduling software with AVL technology			✓
BT	Portable Maintenance Lifts	Purchase a complete set of portable maintenance lifts for one BT vehicle maintenance bay			✓
BT	Fuel Usage Hardware/Software	Replace the 1997 fuel usage hardware/software that is used to track, report and monitor fuel usage for both the BT and IU Campus buses			✓
BT	Paratransit Security Camera	Equip all paratransit vehicles with security cameras for purposes of investigating accidents and customer incidents			✓
BT	Bus Radio Communications Technology	Replace the 2005 bus radio communications system in 2017. This would provide replacement radios for all fixed route buses			✓
BT	Mobility Management Program	Volunteer driver program & vouchers for accessible taxi service.			✓
BT	Mobility Management Program	Consumer education on area transportation options and provision of vouchers for accessible taxi service			✓

*Compliance with the Complete Streets Policy is determined by the Policy Committee at the time of adoption of this document or when new local projects are amended into the Transportation Improvement Program.

Appendix III: Total Expenditure Charts

The following charts illustrate how transportation funding will be spent as identified in this document. It should be noted that revenues and expenditures related to transit include operational expenses and illustrative projects.



Appendix IV: Listing of Projects by Year

The following tables represent a compilation of annual expenditures and the funding sources for all projects. **It is important to note that State project costs are not included in the totals.** Please note that 5% of available STP funding has been set aside in a Change Order Reserve. The intent of setting aside this money is to provide a source of revenue to cover project cost overruns. Any use of funds from this reserve will be subject to the BMCMPPO Change Order Policy. Any figures or projects in *italics* are illustrative.

2014 Local Public Agency Project Listing																
2014 Local Projects		Phase	NHS/STP	TE	TA	SRTS	HSIP	Bridge	FTA 5307/09	FTA 5311	FTA 5316	FTA 5317	PMTF	Farebox	Local	TOTAL
IN	Pavement Markings	CN	\$ -	\$ -	\$ -	\$ -	\$ 200,000	\$ -	\$ -	\$ -	\$ -	\$ -	\$ -	\$ -	\$ -	\$ 200,000
IN	ISP Parking Lot Maintenance	CN	\$ 52,500	\$ -	\$ -	\$ -	\$ -	\$ -	\$ -	\$ -	\$ -	\$ -	\$ -	\$ -	\$ -	\$ 52,500
IN	New Signal Installation	CN	\$ 172,800	\$ -	\$ -	\$ -	\$ -	\$ -	\$ -	\$ -	\$ -	\$ -	\$ -	\$ -	\$ 43,200	\$ 216,000
IN	Bridge Rehabilitation	PE	\$ -	\$ -	\$ -	\$ -	\$ -	\$ 16,000	\$ -	\$ -	\$ -	\$ -	\$ -	\$ -	\$ 4,000	\$ 20,000
IN	I-69 Section 5	PE	\$ 6,400,000	\$ -	\$ -	\$ -	\$ -	\$ -	\$ -	\$ -	\$ -	\$ -	\$ -	\$ -	\$ 1,600,000	\$ 8,000,000
IN	I-69 Section 5	RW	\$ 13,840,000	\$ -	\$ -	\$ -	\$ -	\$ -	\$ -	\$ -	\$ -	\$ -	\$ -	\$ -	\$ 3,460,000	\$ 17,300,000
IN	I-69 Section 5	CN	\$ 16,000,000	\$ -	\$ -	\$ -	\$ -	\$ -	\$ -	\$ -	\$ -	\$ -	\$ -	\$ -	\$ 4,000,000	\$ 20,000,000
IN	Bridge Inspections (underwater)	PE	\$ -	\$ -	\$ -	\$ -	\$ -	\$ 480,000	\$ -	\$ -	\$ -	\$ -	\$ -	\$ -	\$ 120,000	\$ 600,000
IN	Bridge Inspections (load rating)	PE	\$ -	\$ -	\$ -	\$ -	\$ -	\$ 480,000	\$ -	\$ -	\$ -	\$ -	\$ -	\$ -	\$ 120,000	\$ 600,000
IN	Bridge Inspections (quality control)	PE	\$ -	\$ -	\$ -	\$ -	\$ -	\$ 200,000	\$ -	\$ -	\$ -	\$ -	\$ -	\$ -	\$ 50,000	\$ 250,000
IN	Bridge Inspections (rehab and emergency)	PE	\$ -	\$ -	\$ -	\$ -	\$ -	\$ 40,000	\$ -	\$ -	\$ -	\$ -	\$ -	\$ -	\$ 10,000	\$ 50,000
BL	17th & Arlington	CN	\$ 3,430,000	\$ -	\$ -	\$ -	\$ -	\$ -	\$ -	\$ -	\$ -	\$ -	\$ -	\$ -	\$ 857,500	\$ 4,287,500
BL	U. Courts Historic Street Restoration	CN	\$ -	\$ 130,000	\$ -	\$ -	\$ -	\$ -	\$ -	\$ -	\$ -	\$ -	\$ -	\$ -	\$ 134,354	\$ 264,354
BL	2015 Bikeways Projects	PE	\$ -	\$ -	\$ -	\$ -	\$ -	\$ -	\$ -	\$ -	\$ -	\$ -	\$ -	\$ -	\$ 75,000	\$ 75,000
BL	West 2nd St. Feasibility Study	PE	\$ 100,000	\$ -	\$ -	\$ -	\$ -	\$ -	\$ -	\$ -	\$ -	\$ -	\$ -	\$ -	\$ 25,000	\$ 125,000
MC	Bridge Inspection & Inventory	PE	\$ -	\$ -	\$ -	\$ -	\$ -	\$ 71,614	\$ -	\$ -	\$ -	\$ -	\$ -	\$ -	\$ 17,904	\$ 89,518
MC	Fullerton Pike/Gordon Pike/Rhorer Rd	PE	\$ -	\$ -	\$ -	\$ -	\$ -	\$ -	\$ -	\$ -	\$ -	\$ -	\$ -	\$ -	\$ 385,400	\$ 385,400
MC	Mt. Tabor Road Bridge #33	PE	\$ -	\$ -	\$ -	\$ -	\$ -	\$ -	\$ -	\$ -	\$ -	\$ -	\$ -	\$ -	\$ 43,000	\$ 43,000
MC	Mt. Tabor Road Bridge #33	RW	\$ -	\$ -	\$ -	\$ -	\$ -	\$ -	\$ -	\$ -	\$ -	\$ -	\$ -	\$ -	\$ 15,500	\$ 15,500
MC	Karst Farm Ph 1	CN	\$ -	\$ 1,500,000	\$ -	\$ -	\$ -	\$ -	\$ -	\$ -	\$ -	\$ -	\$ -	\$ -	\$ 401,328	\$ 1,901,328
MC	Karst Farm Ph 2a	PE	\$ -	\$ -	\$ -	\$ -	\$ -	\$ -	\$ -	\$ -	\$ -	\$ -	\$ -	\$ -	\$ 8,000	\$ 8,000
MC	Karst Farm Ph 2a	RW	\$ -	\$ -	\$ -	\$ -	\$ -	\$ -	\$ -	\$ -	\$ -	\$ -	\$ -	\$ -	\$ 91,200	\$ 91,200
RT	Operating Budget	n/a	\$ -	\$ -	\$ -	\$ -	\$ -	\$ -	\$ -	\$ 713,651	\$ -	\$ -	\$ 310,875	\$ -	\$ 507,711	\$ 1,532,237
BT	Operating Assistance	n/a	\$ -	\$ -	\$ -	\$ -	\$ -	\$ -	\$ 1,702,313	\$ -	\$ 286,047	\$ -	\$ 2,546,235	\$ 1,609,939	\$ 1,647,127	\$ 7,791,661
BT	Maintenance & Support Vehicles	n/a	\$ -	\$ -	\$ -	\$ -	\$ -	\$ -	\$ 68,000	\$ -	\$ -	\$ -	\$ -	\$ -	\$ 17,000	\$ 85,000
BT	40 Foot Buses	n/a	\$ -	\$ -	\$ -	\$ -	\$ -	\$ -	\$ 336,000	\$ -	\$ -	\$ -	\$ -	\$ -	\$ 84,000	\$ 420,000
BT	BT Access Vehicles	n/a	\$ -	\$ -	\$ -	\$ -	\$ -	\$ -	\$ 82,115	\$ -	\$ -	\$ -	\$ -	\$ -	\$ 20,529	\$ 102,644
BT	25 Foot Buses	n/a	\$ -	\$ -	\$ -	\$ -	\$ -	\$ -	\$ 67,500	\$ -	\$ -	\$ -	\$ -	\$ -	\$ 16,875	\$ 84,375
BT	Engine/Transmission Rebuilds/Tires	n/a	\$ -	\$ -	\$ -	\$ -	\$ -	\$ -	\$ 100,000	\$ -	\$ -	\$ -	\$ -	\$ -	\$ 25,000	\$ 125,000
BT	Portable Maintenance Lifts	n/a	\$ -	\$ -	\$ -	\$ -	\$ -	\$ -	\$ 33,600	\$ -	\$ -	\$ -	\$ -	\$ -	\$ 8,400	\$ 42,000
BT	Passenger Shelters	n/a	\$ -	\$ -	\$ -	\$ -	\$ -	\$ -	\$ 25,600	\$ -	\$ -	\$ -	\$ -	\$ -	\$ 6,400	\$ 32,000
BT	Fare Collection Equipment	n/a	\$ -	\$ -	\$ -	\$ -	\$ -	\$ -	\$ 12,000	\$ -	\$ -	\$ -	\$ -	\$ -	\$ 3,000	\$ 15,000
BT	Mobility Management Program	n/a	\$ -	\$ -	\$ -	\$ -	\$ -	\$ -	\$ -	\$ -	\$ -	\$ 22,500	\$ -	\$ -	\$ 7,500	\$ 30,000
BT	Mobility Management Program	n/a	\$ -	\$ -	\$ -	\$ -	\$ -	\$ -	\$ -	\$ -	\$ -	\$ 25,000	\$ -	\$ -	\$ 10,000	\$ 35,000
MCCSC	Safe Routes to School Non-Infrastructure	n/a	\$ -	\$ -	\$ -	\$ 20,000	\$ -	\$ -	\$ -	\$ -	\$ -	\$ -	\$ -	\$ -	\$ -	\$ 20,000
MPO	5% Change Order Reserve	n/a	\$ 136,642	\$ -	\$ -	\$ -	\$ -	\$ -	\$ -	\$ -	\$ -	\$ -	\$ -	\$ -	\$ -	\$ 136,642
TOTAL			\$ 3,666,642	\$ 1,630,000	\$ -	\$ 20,000	\$ -	\$ 71,614	\$ 2,427,128	\$ 713,651	\$ 286,047	\$ 47,500	\$ 2,857,110	\$ 1,609,939	\$ 4,407,728	\$ 17,737,359

Amended: April 10, 2015

2015 Local Public Agency Project Listing										
2015 Local Projects	Phase	NHS/STP	TE	TA	SRTS	HSIP	Bridge	Local	TOTAL	
IN I-69 Section 5	PE	\$ 1,600,000	\$ -	\$ -	\$ -	\$ -	\$ -	\$ 400,000	\$	2,000,000
IN I-69 Section 5	RW	\$ 8,000,000	\$ -	\$ -	\$ -	\$ -	\$ -	\$ 2,000,000	\$	10,000,000
IN I-69 Section 5	CN	\$ 16,000,000	\$ -	\$ -	\$ -	\$ -	\$ -	\$ 4,000,000	\$	20,000,000
IN Bridge Inspections (underwater)	PE	\$ -	\$ -	\$ -	\$ -	\$ -	\$ 480,000	\$ 120,000	\$	600,000
IN Bridge Inspections (load rating)	PE	\$ -	\$ -	\$ -	\$ -	\$ -	\$ 400,000	\$ 100,000	\$	500,000
IN Bridge Inspections (QA/QC)	PE	\$ 250,000	\$ -	\$ -	\$ -	\$ -	\$ -	\$ -	\$	250,000
BL Dunn & Old 37	RW	\$ 100,000	\$ -	\$ -	\$ -	\$ -	\$ -	\$ 25,000	\$	125,000
BL Black Lumber Spur	PE	\$ 64,000	\$ -	\$ -	\$ -	\$ -	\$ -	\$ 16,000	\$	80,000
BL 17th & Jordan	CN	\$ 434,468	\$ -	\$ -	\$ -	\$ 251,532	\$ -	\$ 171,500	\$	857,500
BL Bikeways Projects	CN	\$ -	\$ -	\$ -	\$ -	\$ -	\$ -	\$ -	\$	-
BL Pedestrian Curb Ramps	CN	\$ -	\$ -	\$ -	\$ -	\$ -	\$ -	\$ -	\$	-
BL Tapp & Rockport	PE	\$ 421,200	\$ -	\$ -	\$ -	\$ -	\$ -	\$ 105,300	\$	526,500
MC Mt. Tabor Bridge	CN	\$ 1,781,000	\$ -	\$ -	\$ -	\$ -	\$ -	\$ 445,250	\$	2,226,250
MC Karst Farm Trail Phase 2a	CN	\$ -	\$ 430,000	\$ 120,400	\$ -	\$ -	\$ -	\$ 137,600	\$	688,000
MC Karst Farm Trail Phase 3	PE	\$ -	\$ -	\$ 38,400	\$ -	\$ -	\$ -	\$ 9,600	\$	48,000
MC Karst Farm Trail Phase 3	RW	\$ -	\$ -	\$ 8,000	\$ -	\$ -	\$ -	\$ 2,000	\$	10,000
MCCSC Safe Routes to School Non-Infrastructure	n/a	\$ -	\$ -	\$ -	\$ 55,000	\$ -	\$ -	\$ -	\$	55,000
TOTAL		\$ 2,800,668	\$ 430,000	\$ 166,800	\$ 55,000	\$ 251,532	\$ -	\$ 912,250	\$	4,616,250

*Note: State project costs are not included in the totals.

2015 Transit Agency Project Listing								
2015 Local Projects	Phase	FTA 5307/09	FTA 5311	PMTF	Farebox	Local	TOTAL	
RT Operating Budget	n/a	\$ -	\$ 742,139	\$ 323,310	\$ -	\$ 528,019	\$	1,593,468
BT Operating Assistance	n/a	\$ 1,982,617	\$ -	\$ 2,648,084	\$ 1,674,336	\$ 1,713,012	\$	8,018,049
BT Maintenance/Support Vehicles	n/a	\$ 70,720	\$ -	\$ -	\$ -	\$ 17,680	\$	88,400
BT BT Access Vehicles	n/a	\$ 85,400	\$ -	\$ -	\$ -	\$ 21,350	\$	106,750
BT 40 Foot Buses	n/a	\$ 704,000	\$ -	\$ -	\$ -	\$ 176,000	\$	880,000
BT Engine/Transmission Rebuilds/Tires	n/a	\$ 104,000	\$ -	\$ -	\$ -	\$ 26,000	\$	130,000
BT Paratransit AVL & Scheduling Tech.	n/a	\$ 120,000	\$ -	\$ -	\$ -	\$ 30,000	\$	150,000
BT Fuel Usage Hardware/Software	n/a	\$ 20,000	\$ -	\$ -	\$ -	\$ 5,000	\$	25,000
TOTAL		\$ 3,086,737	\$ 742,139	\$ 2,971,394	\$ 1,674,336	\$ 2,517,061	\$	10,991,667

2016 Local Public Agency Project Listing											
2016 Local Projects		Phase	NHS/STP	STP Balance	TAP	TAP Balance	HSIP	HSIP Balance	Bridge	Local	TOTAL
IN	Pavement Project	CN	\$ 1,270,400	\$ -	\$ -	\$ -	\$ -	\$ -	\$ -	\$ 317,600	\$ 1,588,000
IN	I-69 Section 5	CN	\$ 16,000,000	\$ -	\$ -	\$ -	\$ -	\$ -	\$ -	\$ 4,000,000	\$ 20,000,000
IN	Bridge Inspections (underwater)	PE	\$ -	\$ -	\$ -	\$ -	\$ -	\$ -	\$ 480,000	\$ 120,000	\$ 600,000
BL	Dunn & Old 37	CN	\$ 171,658	\$ -	\$ -	\$ -	\$ -	\$ 1,524,813	\$ -	\$ 212,338	\$ 1,908,809
BL	Dunn & Old 37	RW	\$ 100,000	\$ -	\$ -	\$ -	\$ -	\$ -	\$ -	\$ 25,000	\$ 125,000
BL	Black Lumber Trail	CN	\$ 406,866	\$ -	\$ -	\$ -	\$ -	\$ -	\$ -	\$ 101,717	\$ 508,583
BL	Tapp & Rockport	RW	\$ 600,000	\$ -	\$ -	\$ -	\$ -	\$ -	\$ -	\$ 150,000	\$ 750,000
BL	Woodlawn Railroad Crossing	CN	\$ 395,118	\$ -	\$ -	\$ -	\$ -	\$ -	\$ -	\$ 98,780	\$ 493,898
MC	Signal Backplates	CN	\$ -	\$ -	\$ -	\$ -	\$ 74,025	\$ -	\$ -	\$ 8,225	\$ 82,250
MC	Karst Farm Trail Phase 3	PE	\$ -	\$ -	\$ 18,960	\$ -	\$ -	\$ -	\$ -	\$ 4,740	\$ 23,700
MC	Karst Farm Trail Phase 3	RW	\$ -	\$ -	\$ 8,000	\$ -	\$ -	\$ -	\$ -	\$ 2,000	\$ 10,000
MC	Karst Farm Trail Phase 3	CN	\$ -	\$ -	\$ 127,089	\$ 68,038	\$ -	\$ -	\$ -	\$ 48,782	\$ 243,909
MC	Bridge Inspection & Inventory	PE	\$ -	\$ -	\$ -	\$ -	\$ -	\$ -	\$ 66,106	\$ 16,526	\$ 82,632
TOTAL			\$ 1,673,642	\$ -	\$ 154,049	\$ 68,038	\$ 74,025	\$ 1,524,813	\$ 66,106	\$ 668,107	\$ 4,228,780

*Note: State project costs are not included in the totals.

2016 Transit Agency Project Listing									
2016 Local Projects		STP	FTA 5307/09	FTA 5311	FTA 5316	PMTF	Farebox	Local	TOTAL
RT	Operating Budget	\$ -	\$ -	\$ 816,353	\$ -	\$ 355,641	\$ -	\$ 580,821	\$ 1,752,815
RT	Bus Maintenance	\$150,000	\$ -	\$ -	\$ -	\$ -	\$ -	\$ 37,500	\$ 37,500
BT	Operating Assistance	\$ -	\$ 2,022,269	\$ -	\$ 102,123	\$ 2,471,308	\$ 1,639,233	\$ 1,833,692	\$ 8,068,625
BT	Engine/Transmission Rebuilds & Tires	\$ -	\$ 140,000	\$ -	\$ -	\$ -	\$ -	\$ 35,000	\$ 175,000
BT	Security Camera Technology	\$ -	\$ 32,000	\$ -	\$ -	\$ -	\$ -	\$ 8,000	\$ 40,000
BT	BT Access Vehicles	\$ -	\$ 90,523	\$ -	\$ -	\$ -	\$ -	\$ 22,631	\$ 113,154
BT	Surveillance Equipment	\$ -	\$ 40,000	\$ -	\$ -	\$ -	\$ -	\$ 10,000	\$ 50,000
BT	Fleet Maintenance Software	\$ -	\$ 16,000	\$ -	\$ -	\$ -	\$ -	\$ 4,000	\$ 20,000
BT	Exhaust System Upgrade	\$ -	\$ 48,000	\$ -	\$ -	\$ -	\$ -	\$ 12,000	\$ 60,000
BT	Purchase 40 foot buses	\$360,000	\$ 1,081,600	\$ -	\$ -	\$ -	\$ -	\$ 360,400	\$ 1,442,000
Total		\$510,000	\$ 3,470,392	\$ 816,353	\$ 102,123	\$ 2,826,949	\$ 1,639,233	\$ 2,904,044	\$ 11,759,094

2017 Local Public Agency Project Listing											
2017 Local Projects	Phase	NHS/STP	STP Balance	TAP	TAP Balance	HSIP	HSIP Balance	Bridge	Local	TOTAL	
IN I-69 Section 5	CN	\$ 16,000,000		\$ -	\$ -	\$ -	\$ -	\$ -	\$ 4,000,000	\$	20,000,000
IN Bridge Inspections (underwater)	PE	\$ 480,000		\$ -	\$ -	\$ -	\$ -	\$ -	\$ 120,000	\$	600,000
IN Bridge Inspections (load rating)	PE	\$ 400,000		\$ -	\$ -	\$ -	\$ -	\$ -	\$ 100,000	\$	500,000
BL Downtown Intersection Improvements	CN	\$ -	\$ -	\$ -	\$ -	\$ 423,720	\$ -	\$ -	\$ 47,080	\$	470,800
BL 2nd & College Signal Replacement	CN	\$ -	\$ 165,000	\$ -	\$ -	\$ -	\$ -	\$ -	\$ 41,250	\$	206,250
BL Moores Pike Guardrail	CN	\$ -	\$ 6,884	\$ -	\$ -	\$ 28,116	\$ -	\$ -	\$ 4,845	\$	39,845
BL Allen & Walnut RRFB	CN	\$ -	\$ 6,100	\$ -	\$ -	\$ 18,900	\$ -	\$ -	\$ 3,625	\$	28,625
BL 4th & Rogers Ped Island	CN	\$ -	\$ 38,432	\$ -	\$ -	\$ 36,568	\$ -	\$ -	\$ 13,671	\$	88,671
BL 3rd & Woodscrest Signal Replacement	CN	\$ -	\$ 215,000	\$ -	\$ -	\$ -	\$ -	\$ -	\$ 53,750	\$	268,750
BL E. Rogers Rd. Sidepath	PE	\$ 21,592	\$ 38,408	\$ -	\$ -	\$ -	\$ -	\$ -	\$ 15,000	\$	75,000
BL South Henderson Sidepath	PE	\$ -	\$ -	\$ 154,049	\$ -	\$ -	\$ -	\$ -	\$ 5,951	\$	160,000
BL Winslow Rd. Sidepath	PE	\$ -	\$ 120,000	\$ -	\$ -	\$ -	\$ -	\$ -	\$ 30,000	\$	150,000
MC Fullerton Pike/Gordon Pike/Rhorer	CN	\$ 2,562,050	\$ 529,354	\$ -	\$ -	\$ -	\$ -	\$ -	\$ 772,851	\$	3,864,255
TOTAL		\$ 2,583,642	\$ 1,119,178	\$ 154,049	\$ -	\$ 507,304	\$ -	\$ -	\$ 988,023	\$	5,352,196

*Note: State project costs are not included in the totals.

2017 Transit Agency Project Listing										
2017 Local Projects	STP	FTA 5307/09	FTA 5311	FTA 5316	FTA 5317	PMTF	Farebox	Local	TOTAL	
RT Operating Budget	\$ -	\$ -	\$ 897,988	\$ -	\$ -	\$ 391,205	\$ -	\$ 638,903	\$	1,928,096
BT Operating Assistance	\$ -	\$ 2,062,715	\$ -	\$ 104,176	\$ -	\$ 2,520,734	\$ 1,672,017	\$ 1,870,366	\$	8,230,008
BT Engine/Transmission Rebuilds & Tires	\$ -	\$ 145,600	\$ -	\$ -	\$ -	\$ -	\$ -	\$ 36,400	\$	182,000
BT Bus Radio Communication Technology	\$ -	\$ 160,000	\$ -	\$ -	\$ -	\$ -	\$ -	\$ 40,000	\$	200,000
BT Fare Collection Equipment	\$ -	\$ 1,200,000	\$ -	\$ -	\$ -	\$ -	\$ -	\$ 300,000	\$	1,500,000
BT Mobility Management Program	\$ -	\$ -	\$ -	\$ -	\$ 25,000	\$ -	\$ -	\$ 10,000	\$	35,000
BT Passenger Shelters	\$ -	\$ 35,360	\$ -	\$ -	\$ -	\$ -	\$ -	\$ 8,840	\$	44,200
BT Purchase 40 foot buses	\$ 1,440,000	\$ 1,499,819	\$ -	\$ -	\$ -	\$ -	\$ -	\$ 734,955	\$	3,674,774
Total	\$ 1,440,000	\$ 5,103,494	\$ 897,988	\$ 104,176	\$ 25,000	\$ 2,911,939	\$ 1,672,017	\$ 3,639,464	\$	15,794,078

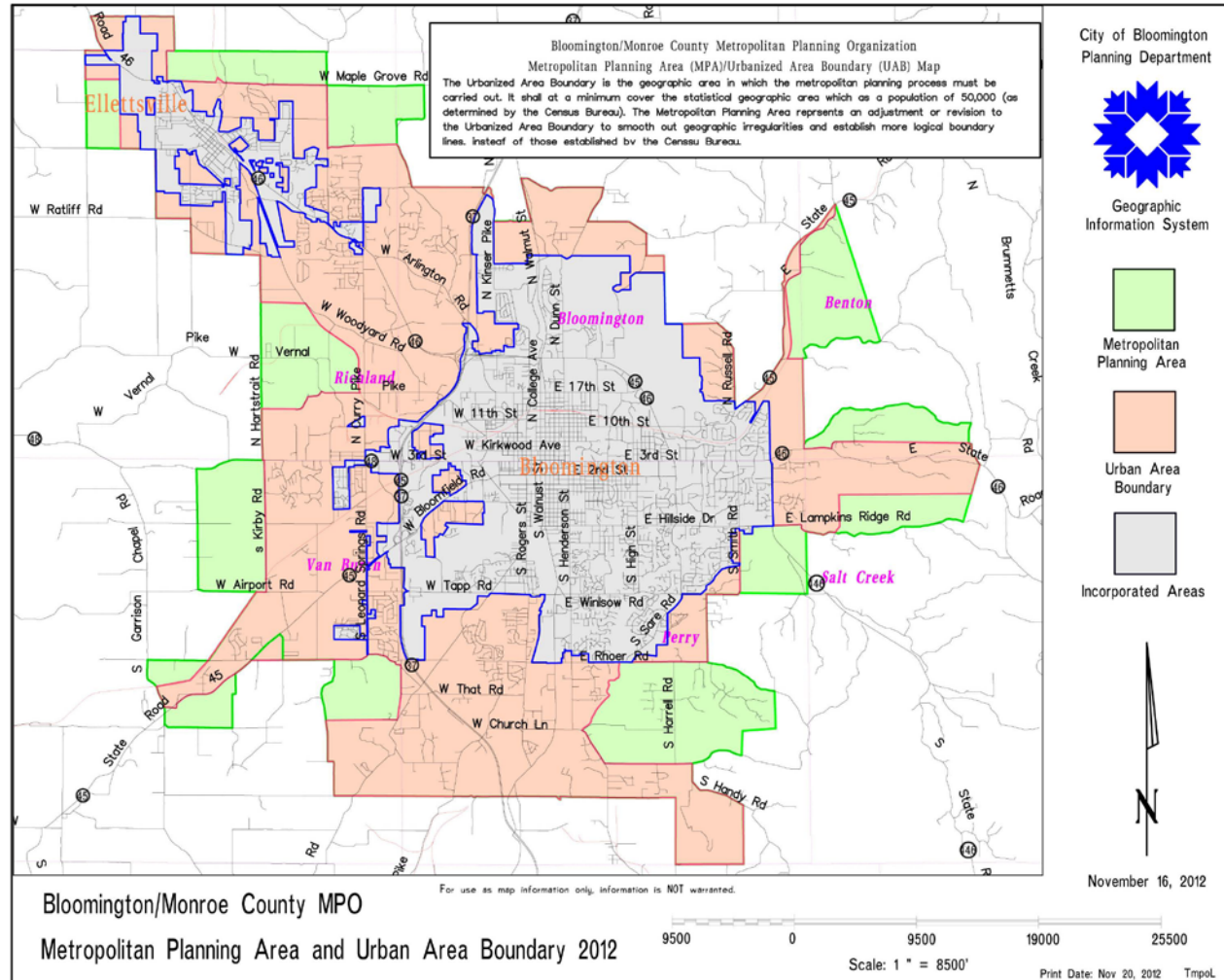
Amended: April 10, 2015

Outlying Years (FY 2018 and beyond) Project Listing													
Outlying Year Projects	Phase	STP	TA	HSIP	Bridge	FTA 5307/09	FTA 5311	FTA 5316	PMTF	Farebox	Local	TOTAL	
IN I-69 Section 5	PE	\$ 320,000	\$ -	\$ -	\$ -	\$ -	\$ -	\$ -	\$ -	\$ -	\$ 80,000	\$ 400,000	
IN I-69 Section 5	RW	\$ 1,600,000	\$ -	\$ -	\$ -	\$ -	\$ -	\$ -	\$ -	\$ -	\$ 400,000	\$ 2,000,000	
IN I-69 Section 5	CN	\$ 64,400,000	\$ -	\$ -	\$ -	\$ -	\$ -	\$ -	\$ -	\$ -	\$ 16,100,000	\$ 80,500,000	
MC Fullerton Pike/Gordon Pike/Rhorer	PE	\$ -	\$ -	\$ -	\$ -	\$ -	\$ -	\$ -	\$ -	\$ -	\$ 1,099,600	\$ 1,099,600	
MC Fullerton Pike/Gordon Pike/Rhorer	RW	\$ -	\$ -	\$ -	\$ -	\$ -	\$ -	\$ -	\$ -	\$ -	\$ 1,303,200	\$ 1,303,200	
MC Fullerton Pike/Gordon Pike/Rhorer	CN	\$ 16,010,400	\$ -	\$ -	\$ -	\$ -	\$ -	\$ -	\$ -	\$ -	\$ 4,002,600	\$ 20,013,000	
TOTAL of local projects only		\$ 82,330,400	\$ -	\$ -	\$ -	\$ -	\$ -	\$ -	\$ -	\$ -	\$ 6,405,400	\$ 22,415,800	

*Note: State project costs are not included in the totals.

Appendix V: Urbanized Area Boundary

The Urbanized Area Boundary (UAB) is the geographic area in which the metropolitan planning process must be carried out. It shall at a minimum cover the statistical geographic area which has a population of 50,000 as determined by the U.S. Census Bureau. The Metropolitan Planning Area (MPA) represents an adjustment or revision to the Urbanized Area Boundary to smooth out geographic irregularities and establish more logical boundary lines, instead of those established by the Census Bureau.



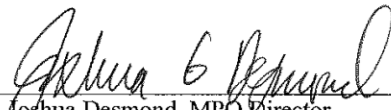
Appendix VI: Self Certification

METROPOLITAN TRANSPORTATION PLANNING PROCESS CERTIFICATION

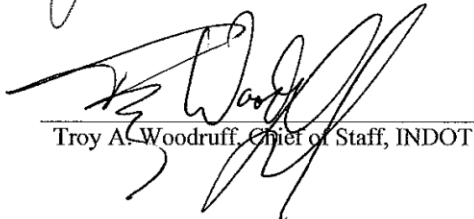
In accordance with 23 CFR 450.334, the Indiana Department of Transportation and the Bloomington/Monroe County Metropolitan Planning Organization for the Bloomington urbanized area hereby certify that the transportation planning process is addressing the major issues in the metropolitan planning area and is being conducted in accordance with all applicable requirements of Titles 23 and 49 USC, specifically:

- I. 23 U.S.C. 134, 49 U.S.C. Section 5303 and this subpart;
- II. In nonattainment and maintenance area, section 174 and 176 (c) and (d) of the Clean Air Act, as amended (42 U.S.C. 7504, 7506 (c) and (d) and 40 CFR part 93;
- III. Title VI of the Civil Rights Act of 1964, as amended (42 U.S.C. 2000d-1) and 49 CFR part 21;
- IV. 49 U.S.C. 5332, prohibiting discrimination on the basis of race, color, creed, national origin, sex, or age in employment or in business opportunities;
- V. Section 1101 (b) of the MAP-21 (Pub.L. 112-41) and 49 CFR part 26 regarding the involvement of disadvantaged business enterprises in USDOT funded projects;
- VI. 23 CFR part 230, regarding the implementation of an equal employment opportunity program on Federal and Federal-aid highway construction contracts;
- VII. The provisions of the Americans with Disabilities Act of 1990 (42 U.S.C. 12101 Et. seq.) and 49 CFR parts 27, 37, and 38;
- VIII. The Older Americans Act, as amended (42 U.S.C. 6101), prohibiting discrimination on the basis of age in programs or activities receiving Federal financial assistance;
- IX. Section 324 of title 23 U.S.C. regarding prohibition or discrimination based on gender; and
- X. Section 504 of the Rehabilitation Act of 1973 (29 U.S.C. 794) and 49 CFR part 27 regarding discrimination against individuals with disabilities.

In May 2011, the United States Department of Transportation conducted an on-site certification review of the Bloomington/Monroe County MPO urban transportation planning process. The USDOT issued a subsequent finding that the Bloomington/Monroe County MPO was fully certified as meeting all pertinent requirements.


Joshua Desmond, MPO Director

4/23/13
Date


Troy A. Woodruff, Chief of Staff, INDOT

4/25/13
Date

Appendix VII: Resolutions



Bloomington/Monroe County Metropolitan Planning Organization

ADOPTION RESOLUTION FY 2013-13

RESOLUTION ADOPTING THE FISCAL YEAR 2014-2017 TRANSPORTATION IMPROVEMENT PROGRAM (TIP) as presented to the Policy Committee of the Bloomington/Monroe County Metropolitan Planning Organization on June 14, 2013.

WHEREAS, the Bloomington/Monroe County Metropolitan Planning Organization (BMCMPPO) is the organization designated by the Governor of Indiana as the Metropolitan Planning Organization responsible for carrying out, with the State of Indiana, the provisions of 23 U.S.C. 134, and capable of meeting the requirements thereof for the Bloomington, Indiana urbanized area; and

WHEREAS, in cooperation with the State, the BMCMPPO must develop and maintain, and has developed and maintained, a Transportation Improvement Program which illustrates how federal funds will be expended on transportation projects within the urbanized area over the next four fiscal years; and

WHEREAS, public comment on the proposed FY 2014-2017 TIP was sought and received during the public comment period from May 3, 2013 to June 3, 2013; and

WHEREAS, the Federal Highway Administration has issued planning emphasis areas to the State's Metropolitan Planning Organization; and

WHEREAS, the Policy Committee has agreed to form a joint City, County Fullerton Pike study committee to evaluate the overall project with regard to land use, transportation and future demands and subsequently report to the Policy Committee at the next regularly scheduled meeting.

NOW, THEREFORE, BE IT RESOLVED:

- (1) The Bloomington/Monroe County Metropolitan Planning Organization adopts the Fiscal Year 2014-2017 Transportation Improvement Program
- (2) That the adopted document shall be forwarded to all relevant public officials and government agencies, and shall be available for public inspection during regular business hours at the City of Bloomington Planning Department, located in the Showers Center City Hall at 401 North Morton Street, Bloomington, Indiana.

PASSED AND ADOPTED by the Policy Committee by a vote of 10 - 3 upon this 14th day of June, 2013.


Kent McDaniel
Chair, Policy Committee
Bloomington/Monroe County MPO


Attest: Anya Dragovich
Sr. Transportation Planner
Bloomington/Monroe County MPO