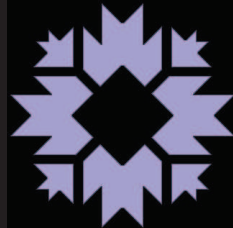


# The Planning & Transportation Post

The Newsletter of the City of Bloomington Planning and Transportation Department



## City of Bloomington Planning and Transportation Department

401 N. Morton St., Suite 130  
Bloomington, IN 47404  
p: 812.349.3423

e: [planning@bloomington.in.gov](mailto:planning@bloomington.in.gov)  
[bloomington.in.gov/planning](http://bloomington.in.gov/planning)  
[facebook.com/bloomingtonplanning](https://facebook.com/bloomingtonplanning)  
[twitter.com/bloomplantrans](https://twitter.com/bloomplantrans)



## Save the Date for 2014 Open Streets Bloomington

Bloomington's first Open Streets event was held in September 2013. Open Streets, sometimes called Ciclovias or Sunday Streets, can be thought of as a parade turned inside out. At a parade, participants typically just sit passively along the edges watching while the parade moves by. Instead, an Open Streets event is made up of those who would normally sit and watch; now they themselves become the parade, which is the focus of an Open Streets event.

In last year's inaugural event, more than 1,800 people participated, and Downtown Bloomington, Inc. awarded Open Streets Bloomington with its Downtown Revitalization Award. Save the date for the 2014 event: **Sunday, October 5**. Check the website for more details: <http://openstreetsbloomington.com/>

## City of Bloomington Planning and Transportation Department Formed

Notice anything different around here? The Planning Department and Public Works - Engineering Division have now merged to form the new Planning and Transportation Department. With this change, the Department has moved to Suite 130 in City Hall. Our phone number remains as (812) 349-3423, but our fax number has changed to (812) 349-3520. Additionally, you can still contact us via e-mail at [planning@bloomington.in.gov](mailto:planning@bloomington.in.gov).

The new combined department will allow for greater coordination from plan stage through implementation, for both private development and transportation improvements. Prior to the merger, developers and contractors had to apply for certificates of zoning compliance separately from engineering permits and encroachment licenses. Staff members that are responsible for reviewing planning and engineering permits, as well as inspecting new developments, are now housed within the same office. Efforts are already underway to facilitate an even smoother development permitting process. Also part of the merger, two new City of Bloomington advisory commissions will be supported by the Planning and Transportation Department. These include the Traffic Commission and the Bicycle Pedestrian Safety Commission.

Staff members assigned to transportation planning and engineering will also be working together to bring publicly supported plans for a

*Continued on page 3*



# 2007-2011 Greenspace Report

The City of Bloomington Environmental Commission (EC) began conducting a periodic assessment of greenspace gain or loss in 1993. The Report was updated this summer. To be categorized as greenspace for the purposes of the Report, three characteristics must be met: 1) the area must possess a permeable surface and includes forested, shrubbery and grassy areas, parks, golf courses, cemeteries, and agricultural areas; 2) the area must be greater than one contiguous acre; and 3) the area must be more than ten feet from any man-made development, such as roads, parking lots, and buildings. This generally excludes most lawns, roadside plantings, and small tree-covered plots, including parks, golf courses and some common open spaces.

The city's greenspace is divided into these categories: total greenspace, Indiana University (IU) greenspace, park greenspace, and non-IU/non-park (referring to other greenspace generally privately owned). From 2007 to 2011 there have been fluctuations in greenspace loss and gain. The percentage lost in IU greenspace from 2007-2011 is 0.4%, bringing the acreage to 1,216.64 acres. The percentage gained in park greenspace from 2007-2011 is 6.2%, bringing the acreage to 1,461.47 acres. The percentage lost in Non-IU/Non-Park from 2007-2011 is 1.9%, bringing the acreage to 3,760.08 acres. The overall percentage lost in greenspace from 2007-2011 is -0.1%. This means that the city gained more greenspace than it lost, which brings the overall acreage to 6,438.19 acres, gaining 8.86 acres more than the 2007 overall acreage.

The EC completed its first greenspace report in 1993. Since then, the loss or increase of greenspace has been recorded for the following years: 1993, 1998, 2002, 2003, 2005, 2006, 2007, and 2011. The most recent aerial photographs available today are from 2011. To be consistent with the reports from 1993-2011, the totals in this document include the former Areas Intended for Annexation (AIFA). Although these areas are not within City limits, they were formerly under the City's planning jurisdiction. Today, the AIFA is within the Monroe County Planning Department's jurisdiction. The greenspace in these areas is included in the greenspace report for comparison purposes.

The 2007-2011 report marks the first time since 1993 that total greenspace within the city increased rather than decreased. In 2011, the Parks and Recreation Department obtained 85.34 acres of greenspace while IU and non-IU/non-park lost 76.48 acres of greenspace, leading to a 8.86 acres overall gain. Since 1993, all categories of greenspace have declined, with the exception of park greenspace. The 8.86 acres of park greenspace was gained between 2007 and 2011.

Overall greenspace Citywide has leveled out. The observed reversal of the trend of decreasing greenspace could serve as a turning point for preserving and gaining greenspace in the future.

To read the full report, please see <http://bloomington.in.gov/>

## New Bike Map Available

A new bike map is now available. Although the City of Bloomington has been publishing a bike map since 1994, this is the first time that areas outside of City limits have been included in the map. Collaboration between the City of Bloomington Planning and Transportation Department and Monroe County Planning Department allowed for both the City and County to be included. The City side of the map shows bicycle infrastructure throughout the City, while the County side of the map rates roads for suitability for beginner bicyclists.



Destinations such as bike shops, schools, and parks are included as well as safety tips for riders. Now riders can start at a location in the City, such as Bryan Park, and bike out into the County, perhaps going to Oliver Winery, without much difficulty or confusion. A convenient pocket sized version of the map is also available. The bike map website provides a PDF of the map and locations where a paper copy can be picked up: <http://bloomington.in.gov/bike>

## Construction Buzz

### 1 901 W. Cottage Grove Ave. Habitat for Humanity

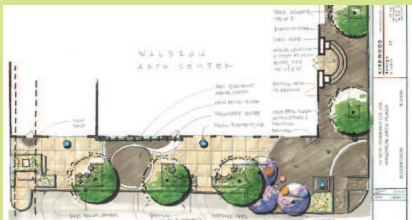
The Plan Commission approved a Planned Unit Development for a subdivision containing 35 units of attached and detached single-family homes. Site work will begin soon, with construction starting in 2015.



*A rendering of the future homes*

### 2 122 S. Walnut St. Waldron Arts Center

Construction is now underway to install a new streetscape in front of the Waldron Arts Center. Design elements will include new trees, lightposts, a plaza area and public art.



*A new look for the Waldron Center*

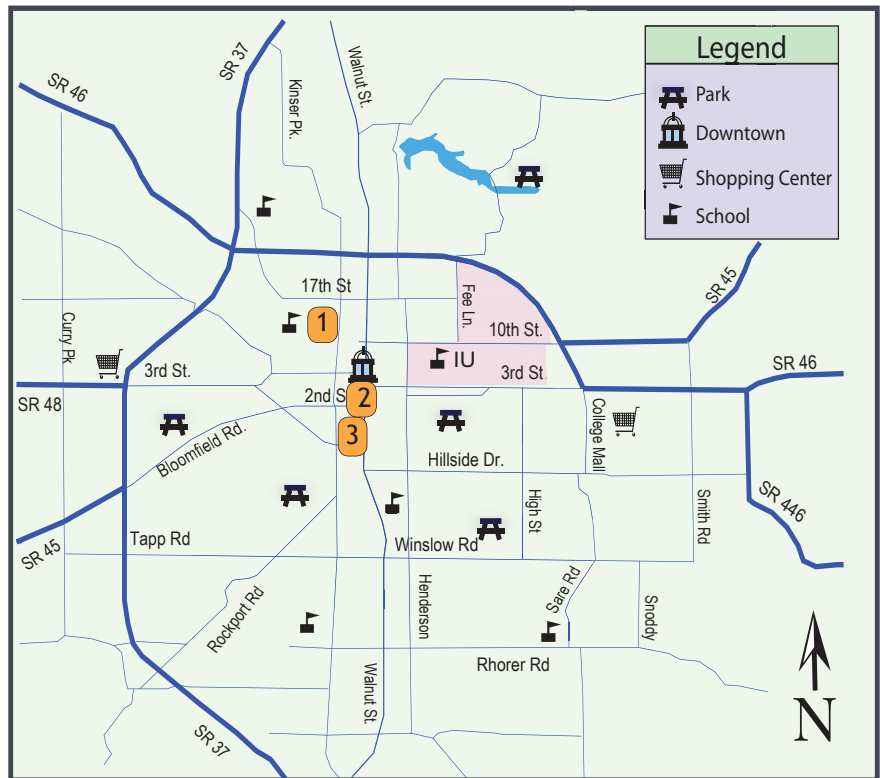
### 3 922 S. Morton St. Cardinal Spirits

The Board of Zoning Appeals approved a Conditional Use for a craft distillery. It will include production and tasting areas. Remodeling is underway, with an expected opening in 2014.



*Remodeling for Cardinal Spirits*

## Construction Buzz Location Map



## New Department (continued)

safe, balanced transportation system to fruition. They will be working to ensure that citizens are involved throughout the process and will carry out progressive plans, which promote streets that serve all users, as well as providing more funding for bicycling and pedestrian improvements.

Wondering when you'll need to contact us? Here are just some of the additional duties that now fall within the Department's purview:

- Construction and reconstruction for sidewalk, street and intersection designs;
- New (or changes to) existing signs, traffic signals, streets, and intersections;
- Processing of plats and public improvement bonds;
- Right-of-way (ROW) and grading permits;
- Erosion control;
- Requests to use the public ROW, such as: construction dumpsters, travel lane closures, sidewalk closures and work in alleys;
- Encroachments into the public ROW, such as canopies/awnings, grease traps/interceptors, outdoor seating, and water meter pits;
- Street addresses and issues regarding street names.

To find out more, please call or stop by our new office in City Hall.



# Bicycle Instructor Corps

Congratulations to the recent graduates of the Bicycle Instructor Corps! This program requires applicants to complete their League Certified Instructor (LCI) certification, which is offered through the League of American Bicyclists. A total of fourteen people, eight of whom are local residents, graduated the Bicycle Instructor Corps program. This weekend long training event, held in August, was hosted by the City of Bloomington. The rigorous 3-day certification process ensures that these latest graduates will have the ability to offer classes to the public that cover safe bicycle riding techniques and skills. The 2014 Bicycle Instructor Corps was funded through a Bloomington Bicycle Club grant. This grant was utilized to pay the \$300 LCI certification fee for six of the local candidates, each of whom was selected by the Bicycle and Pedestrian Safety Commission.



*New graduates pose alongside their LCI instructors at City Hall*

**City of Bloomington Planning and Transportation Department**  
**401 N. Morton St., Suite 130**  
**P.O. Box 100**  
**Bloomington, IN 47402**

**Subscribe to the *Post* and receive  
three newsletters per year via email.**

**Simply send your request to:**

**[planning-news+subscribe@bloomington.in.gov](mailto:planning-news+subscribe@bloomington.in.gov)**

**To unsubscribe, send an email to:**

**[planning-news+unsubscribe@bloomington.in.gov](mailto:planning-news+unsubscribe@bloomington.in.gov)**



**CITY OF BLOOMINGTON**

**BLOOMINGTON • MONROE COUNTY**

