

# The Bloomington Police Department



# The Bloomington Police Department

- History of the Department
- Administrative, Patrol and Detective Divisions
- Specialized Units
- Jurisdiction
- Programs
- Information Sharing

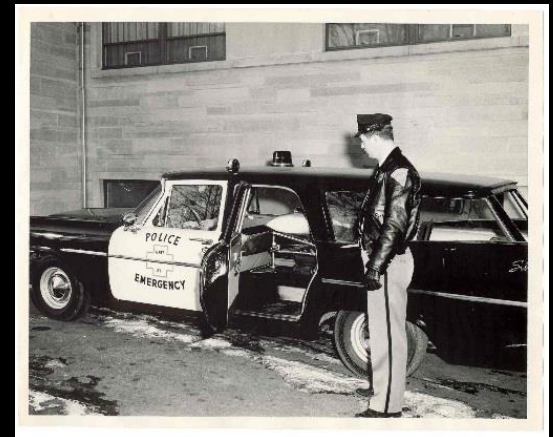
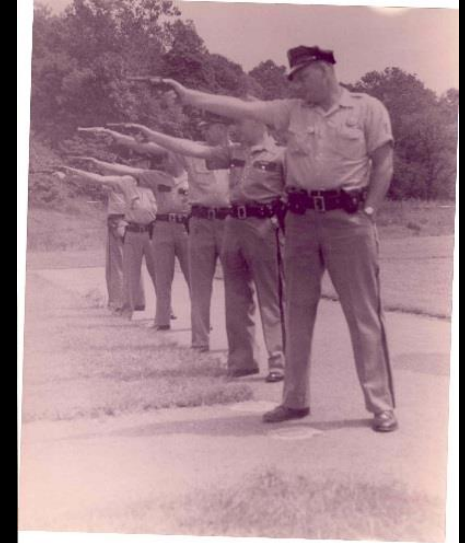
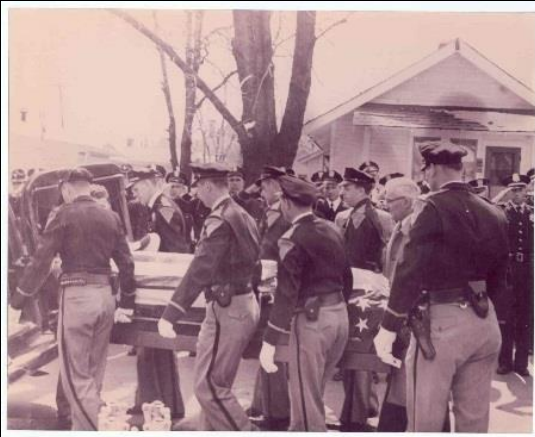
# The Bloomington Police Department

- Mission Statement

*The mission of the Bloomington Police Department is to safeguard life and property while respecting diversity, encouraging civility, solving problems, and maintaining a high standard of individual integrity and professionalism.*

# The Bloomington Police Department

Our History...



# The Bloomington Police Department

- Bloomington becomes an incorporated town in 1847.
- The first Town Marshal was David B. Judah. He served from 1847 to 1853.
- In 1860 “Night Watchers” began patrolling the City.
- In 1876 Bloomington becomes a City.
- On September 18, 1899 the City Council approved the formation of the Bloomington Police Department.



# The Bloomington Police Department



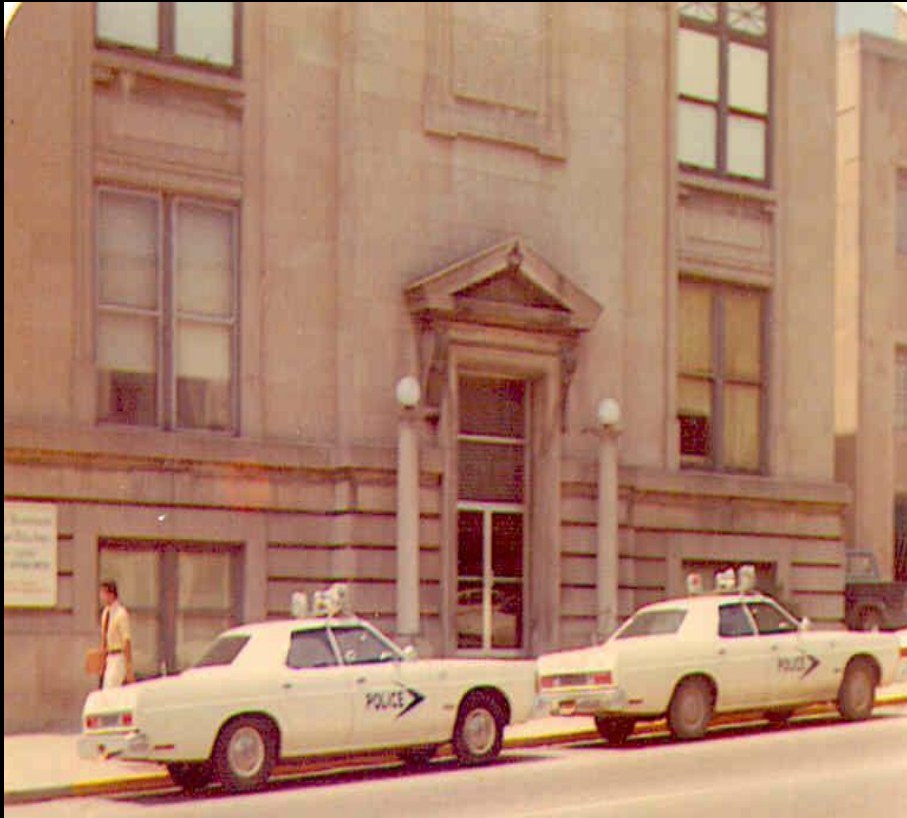
September 18, 1899  
The City fire engine house on the Court House lawn is designated as the first Police Headquarters by the City Council.

# Circa 1910

## Bloomington's First Uniform Police Force



# The Bloomington Police Department



- In 1915, the Police Department moves to the new City Hall building at 122 South Walnut Street.



# The Bloomington Police Department

- On December 20, 1916, the City Council approved the purchase of an automobile for use as a police car. The cost was \$380.00.
- On June 22, 1922 the City purchases the first motorcycle to be used by the Police Department.



# The Bloomington Police Department

- On September 7, 1937, the first radio equipment is purchased.
- In 1939 the City Council established an 8 hour work day for Officers. Before this date, Officers worked 12 hour shifts.

# The Bloomington Police Department

- 1939 Police salaries:
  - The Chief made \$2100.00 a year
  - Captains made \$32.00 a week
  - Patrolmen made \$28.00 a week

# The Bloomington Police Department

- In 1956 the first portable radio is purchased. It was a 15 pound suitcase-style radio.
- In 1958 call boxes are installed in schools, around the Court House, and in other busy locations



# The Bloomington Police Department

- Between 1958 and 1973, the Police Department operated the ambulance service. Officers were not trained as medics. It operated more as a speedy taxi service to the hospital.
- “Load ‘em and go!”  
was the motto



# The Bloomington Police Department

- In 1986, the Police Department moves to the lower level of the Justice Building. The Courts, Sheriff's Department, Jail and Police Department are all located in one building.



# The Bloomington Police Department

- In 1998, the Police Department moves into its current location at 220 East Third Street. The building was originally built for Police Headquarters in 1963, but was occupied by City Hall instead. The communications center combines City and County dispatch as well as fire and ambulance. Central Dispatch begins.

# The Bloomington Police Department

## Fallen Officers

- November 24, 1928, Officer Ralph Pogue was the first officer killed in the line of duty while serving a search warrant on a “blind tiger”. Blind tigers were places that sold illegal alcohol during Prohibition. Pogue was shot in the stomach with a .38 revolver.



# The Bloomington Police Department

- December 24, 1928 Chief Perry Cardwell succumbed to injuries sustained approximately one year earlier while directing traffic at a local football game.

His injuries caused him to leave the police department and health continued to decline until he finally succumbed to his injuries becoming the second officer killed in the line of duty.

# The Bloomington Police Department

- March 25, 1955 Police Officer Dale Mishler is killed in the line of duty. Officer Mishler and Officer Jerry Green began chasing a vehicle toward Ellettsville and lost control of their police car and crashed. Officer Mishler was killed instantly and Officer Green was seriously injured. He never fully recovered and died in 1967.



# The Bloomington Police Department

- August 15, 1975 Donald Owens becomes the fifth Officer killed in the line of duty. He was shot with his own gun while escorting a prisoner to court.



# The Bloomington Police Department





# The Bloomington Police Department

## Personnel

- 100 sworn officers
- 54 civilian employees
  - Records
  - Dispatch
  - Administrative
  - Parking Enforcement

# The Bloomington Police Department

## Administrative Ranks

- Chief
- Deputy Chief
- Captain of Operations
- Captain of Administration

# The Bloomington Police Department

- Other Ranks within the Department
  - Lieutenant
  - Sergeant
  - Senior Police Officer
  - Officer First Class
  - Probationary Police Officer (1<sup>st</sup> Year)
  - Detective is a position and not a rank

# The Bloomington Police Department



The Police Department is divided into Operations and Administrative Divisions.

The Operations Division consists of:

- Patrol Division
- Detective Division



# The Bloomington Police Department

- Patrol Division Organizational Chart
  - Captain of Operations
  - Lieutenant (1 for each of 3 shifts)
  - Sergeant (3 per shift)
  - Officers (several assigned to a Sergeant or a “rotation”)

# The Bloomington Police Department

- Within the Patrol Division Police Officers perform a variety of tasks everyday.



# The Bloomington Police Department

- Snowy weather causing traffic problems.

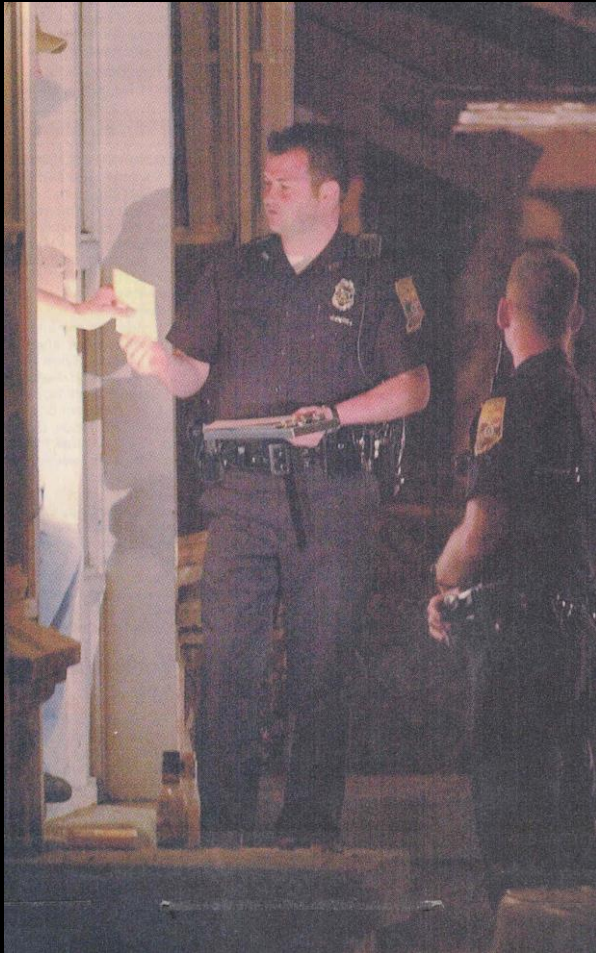


# The Bloomington Police Department

- Officers arresting protesters.



# The Bloomington Police Department

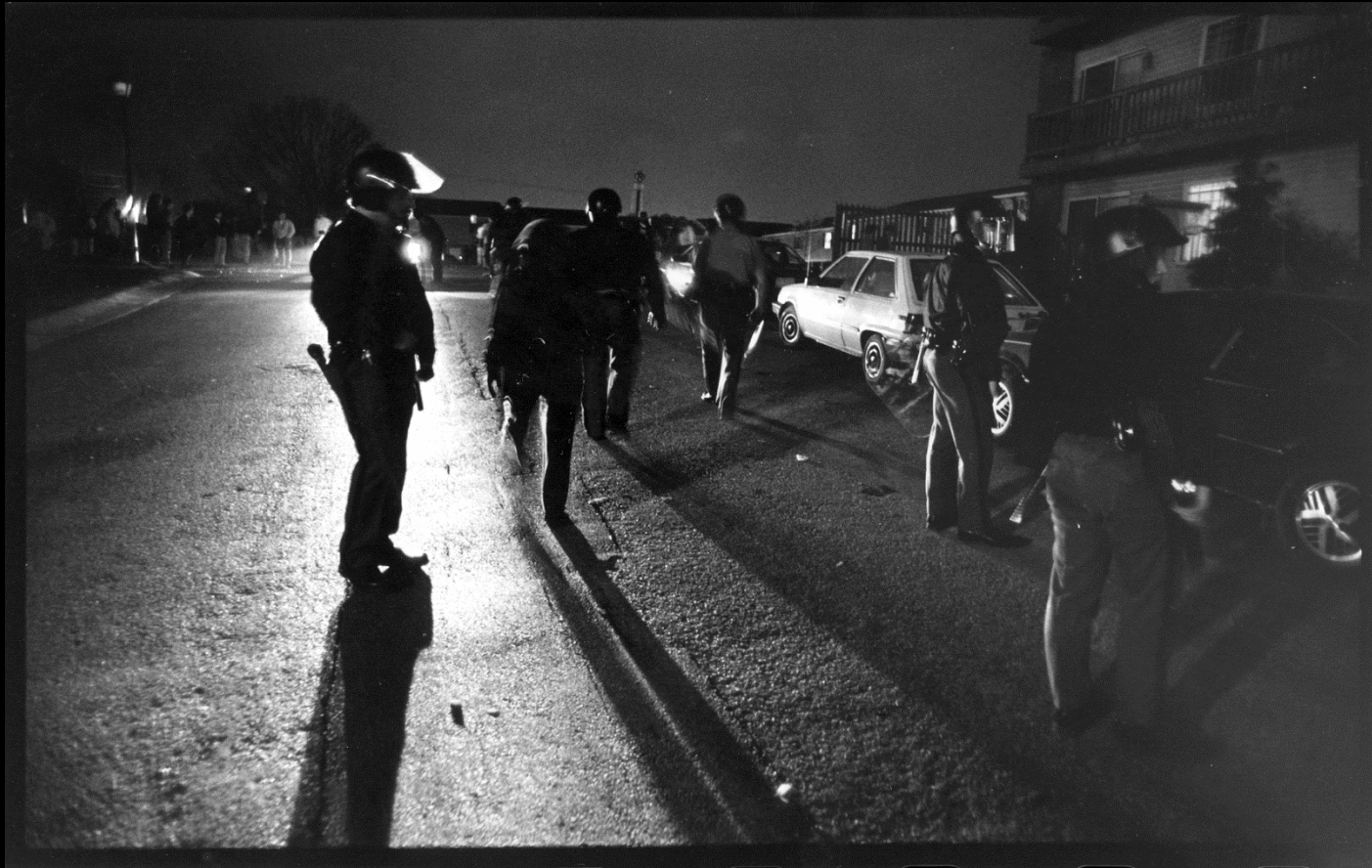


- Officers working Quiet Nights.



# The Bloomington Police Department

“A previous Little 500”



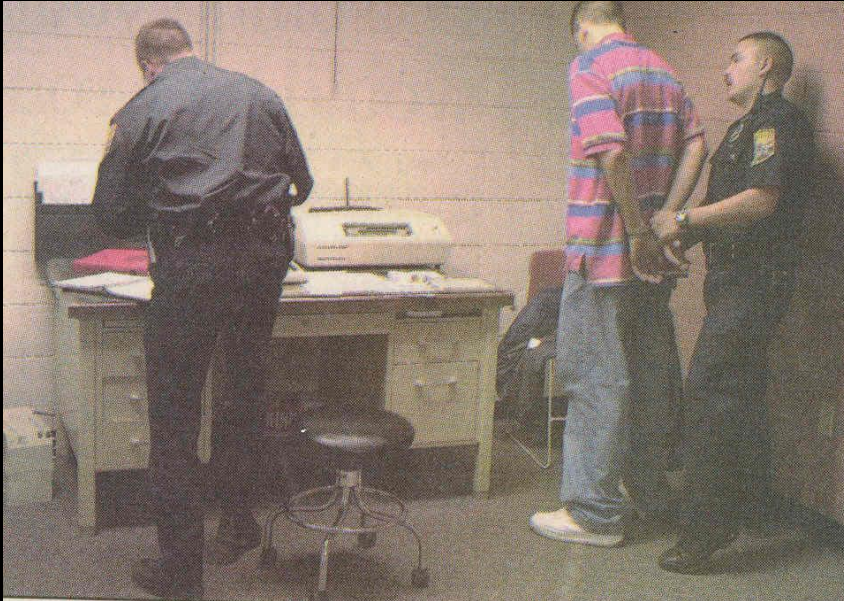


# The Bloomington Police Department

- Officers working a serious vehicle accident.



# The Bloomington Police Department



- Officers with suspected drunk driver in the Breath Test Room.

# The Bloomington Police Department

- Detective Division Organizational Chart
  - Captain of Operations
  - Lieutenant
  - Sergeants
  - Detectives (General Assignment)
    - there are 10 Detective positions
  - Special Investigations Unit (SIU)
  - Evidence Technicians

# The Bloomington Police Department

- Cases Worked by Detectives
  - Homicides
  - Robbery
  - Burglary
  - Sexual Assault
  - Child Molesting



# The Bloomington Police Department

- Cases Worked by Detectives
  - Fraud
  - Forgery
  - Death Investigations
    - suicide
    - suspicious deaths
    - drug overdose

# The Bloomington Police Department

- Cases Worked by Detectives
  - Internal Theft
  - Drugs
  - Assist Uniform Division with:
    - locating witnesses, victims or suspects
    - obtaining statements



# The Bloomington Police Department

- Detective Specialties
  - Sex Crimes
  - Financial Crimes
  - Forensic Computer Analysis
  - Cell Phone Analysis and Mapping
  - Drug Investigations
  - Video Analysis

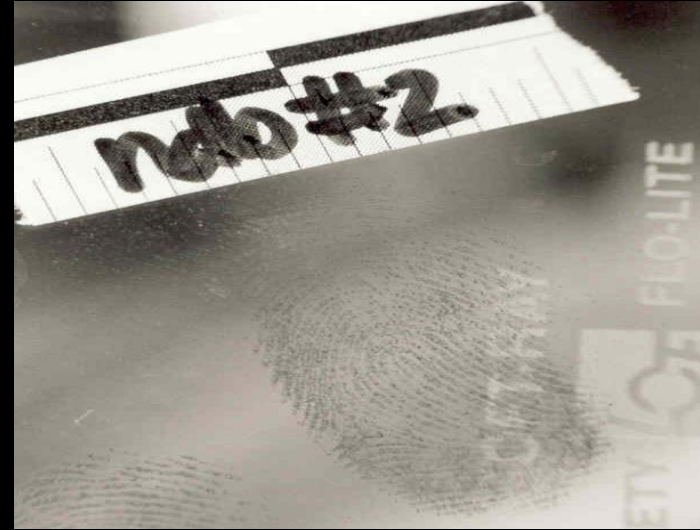
# The Bloomington Police Department



- The Special Investigations Unit (SIU) investigates drug offenses, manages confidential informants, conducts surveillance or is involved in other plainclothes operations.
- There are currently 5 members of the SIU

# The Bloomington Police Department

- The Detective Division has 2 Evidence Techs who are responsible for processing the crime scenes of cases worked by BPD.
- Evidence Techs also manage the Property Room.



# The Bloomington Police Department

## Specialized Units

- Civil Disturbance Unit (CDU)
- Dive Team
- Critical Incident Response Team (CIRT)
- Honor Guard
- Bike Patrol
- Canine Unit
- Training Division
- Downtown Resource Officer (DRO)
- Field Training Officer (FTO)
- Accident Reconstruction
- Special Investigations Unit (SIU)
- Crime Analysis Unit
- Cyber Crimes Unit





# The Bloomington Police Department

## Specialized Units



### DIVE TEAM

-A multi-jurisdictional team of volunteer divers called upon to search for persons, evidence of crimes, and recover lost or stolen property from lakes, rivers and quarries.

# The Bloomington Police Department

## Specialized Units

### CRITICAL INCIDENT RESPONSE TEAM (CIRT)

-A highly-trained and disciplined team designed to handle emergencies and situations involving extreme danger. Regular training and conditioning are an integral part of the program.





# The Bloomington Police Department

## Specialized Units

### Honor Guard

-Represents BPD at special events such as 9/11 and National Police Week Ceremonies or visitation and funerals for retired members



# The Bloomington Police Department

Specialized Units



## K-9 Unit

- Trained to track fugitives, search for suspects and drugs, search out accident victims and assist in finding lost persons.

# The Bloomington Police Department

- The Training Division is responsible for providing Officers with in-service training on a monthly basis, updating Officers on changes in the law and keeping records of training that must be submitted to the State.



# The Bloomington Police Department

## Specialized Units

- Downtown Resource Officers (DRO)

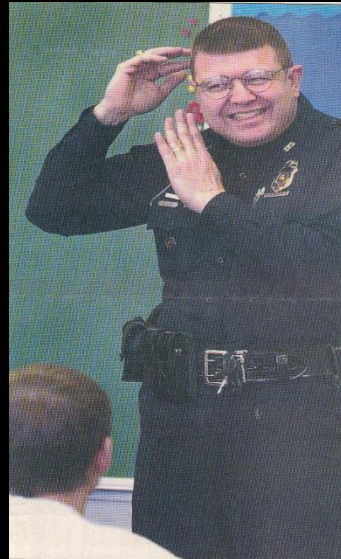
Officers patrol the City's Downtown District and areas adjacent to the IU campus. The DRO Program increases exposure to the public and enhances the Department's community policing initiatives. Officers frequently connect those in need with various social services in coordination with those agencies.



# The Bloomington Police Department

## Specialized Units

- Cops in Schools are at high schools and middle schools during the mornings, lunch and when school lets out for the day. They also attend extra-curricular events.





# The Bloomington Police Department

- Administrative Division
  - Records
  - Dispatch
  - Administrative Assistants
  - Parking Enforcement
  - Crime Analysis Unit
  - Recruiting and Hiring
  - Community Outreach
  - Public Information



# The Bloomington Police Department

- The Bloomington Police Department patrols an area over 20 square miles with over 207 street miles.
- The City has a population of over 84,000 people.
- There are 100 Bloomington Police Officers.

# The Bloomington Police Department

- The Bloomington Police Department operates with 3 shifts:
  - Morning Shift: 5:30 am to 2:00 pm
  - Afternoon Shift: 1:30 pm to 10:00 pm
  - Night Shift: 9:30 pm to 6:00 am
  - Detectives: 8:00 am through 10:00 pm plus “on call” availability at night and on weekends for major crimes

# The Bloomington Police Department

## Employment Requirements

- Candidates to the Department must meet the following requirements at the time of application:
  - Be 21 years of age and less than 36 at time of appointment
  - Be a high school graduate. A college degree is preferred
  - Have a valid Indiana driver's license

# The Bloomington Police Department

- Be a resident of Monroe County or an adjacent county at the time of appointment
- Be of good moral character as determined by a thorough background investigation and polygraph examination.
- Complete interviews with the Police Screening Committee and the Board of Public Safety.

# The Bloomington Police Department

- Pass the physical fitness standards of the Indiana Law Enforcement Academy.
- Successful applicants must pass a psychological screening and physical examination performed by a licensed physician chosen by the Police Pension Board.
- Be accepted into the Police Public Employment Retirement Fund (PERF).

# The Bloomington Police Department

- Starting salary is \$46,806 while a Probationary Police Officer for 1 year
- Once promoted to Officer First Class after 1 year, base pay is \$52,006
- Overtime Pay
- Shift Differential
- Specialty Pay
- Education Pay



# The Bloomington Police Department

- Community Outreach Programs
  - Downtown Resource Officer (DRO)
  - Neighborhood Resource Officer (NRO)
  - Cops in Schools
  - Coffee with a Cop
  - National Night Out
  - LGBTQ Liaison

# The Bloomington Police Department

- BPD Citizen's Police Academy
- Police Explorer Program
- Teen Academy
- Civilian Ride Along Program
- Drug Treatment Court
- Speaking Engagements (Neighborhood Associations, IU, Ivy Tech, MCCSC Schools, and other community groups)

# The Bloomington Police Department

- Social Media and Information Sharing
  - Facebook
    - crime tips
    - appearances or events in the community
  - Fur-Ever Friend Friday
  - Twitter (@BltgINPolice)
  - Instagram
  - YouTube

# The Bloomington Police Department

- Social Media and Information Sharing
  - B Clear Open Data (City website)  
(<https://bloomington.in.gov/>)
  - White House Police Data Initiative  
(<https://publicsafetydataportal.org/>)
  - Interactive Crime Map (City website)  
(<https://bloomington.in.gov/>)

# The Bloomington Police Department

## QUESTIONS?

