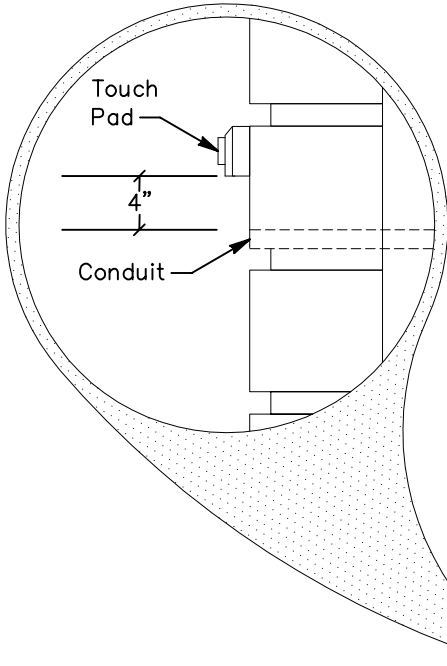
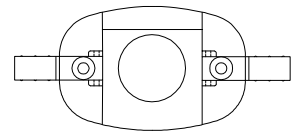


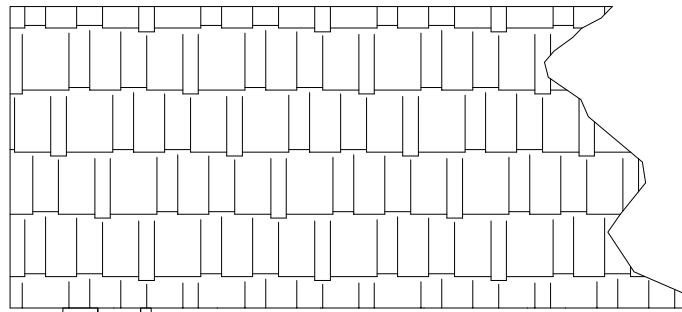
Radio Read Touch pad
Front view



Touch Pad

4"

Conduit



Conduit through exterior wall (by Contractor)

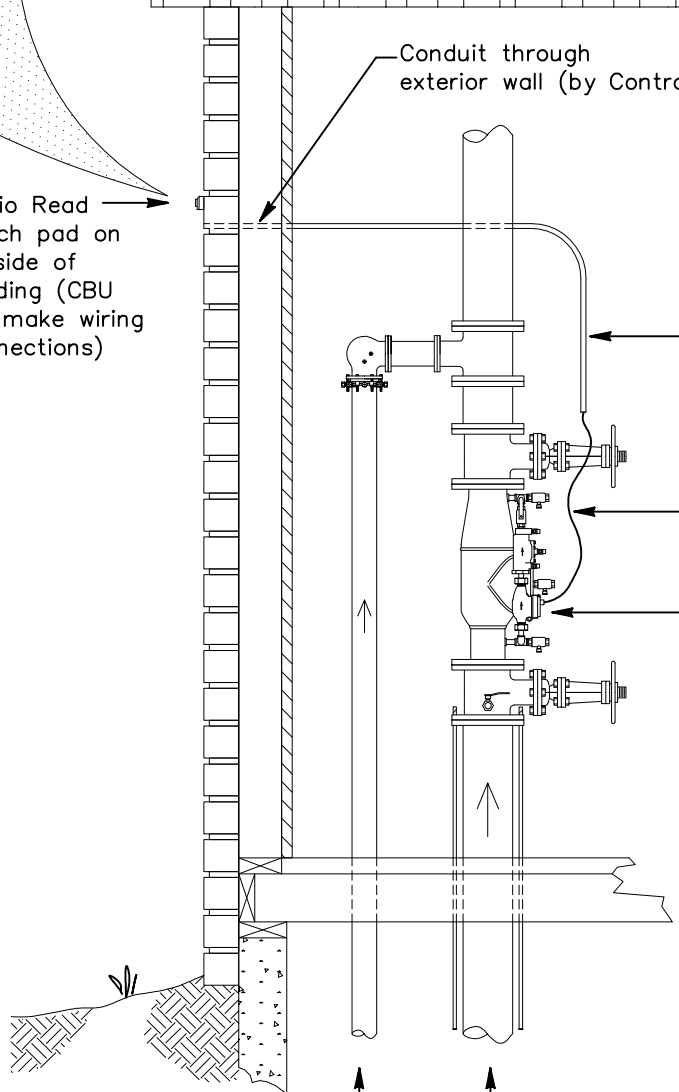
Radio Read Touch pad on outside of building (CBU will make wiring connections)

Touch Pad height To Grade 8' Min 12' Max

Conduit 1/2" Min. (by Contractor)

3 Conductor 22 AWG Telephone Cable (by Contractor)

Bypass Detector Meter location on Double Detector Check Assembly in building (CBU will make wiring connections)



Fire Department Connection into the building's Riser Room

Fire Line into the building's Riser Room

*Note:
Allow min. 2' extra wire both at meter and outside for CBU to make connection

NO SCALE

FIRE LINE DOUBLE CHECK VALVE
METER CONDUIT INSTALLATION DETAIL

City of Bloomington Utilities Engineering Department

G.A.N
7/11/2016

Drawing File:
I:\COMMON\STANDARD DRAWINGS\STD34.dwg

STANDARD
DETAIL
NUMBER

34