

# Vegetation Management Report

Jon Behrman



# Overview

- Vegetation Management Crew
  - 1.5 Full Time Staff – fully licensed Pesticide Applicators
  - 5 Seasonal Registered Technicians
  - Primary focus is promoting biodiversity through native plants
- Responsibilities
  - Manage vegetation on over 2,000 acres of City Properties
  - Maintain and install native plantings
  - Monitor and assess sites for ecological sustainability
  - Train and work with volunteers to remove invasive species



# Invasive Species

## Invasive Species Definition

- Methods of Control
  - Mechanical
  - Cultural
  - Biological
  - Chemical
  - EDUCATION



# Asian Bush Honeysuckle

*Lonicera maackii*

- Areas of Most Concern
  - Upper Cascades Park
  - Griffy Lake Nature Preserve
  - Ferguson Dog Park
  - Bloomington Rail Trail, B-Line Trail
  - City Wide



30 + Acres treated

Treatment- Herbicide (cut stump, foliar)

# AmeriCorps Oak 2 Crew

- Removed 10 heavily infested acres of Asian Bush Honeysuckle in Upper Cascades Park



# Garlic Mustard

*Alliaria petiolata*

- Areas of Main Concern
  - Leonard Springs Nature Park
  - Griffy Lake Nature Preserve
  - Wapehani Mountain Bike Park
  - Winslow Woods Park
  - Goat Farm/Olcott Park



30 + Acres Treated  
Treatment- Hand Pulling, Foliar  
Herbicide

# Japanese Stiltgrass

*Microstegium vimineum*

- Areas of Main Concern
  - Griffy Lake Nature Preserve
  - Leonard Springs Nature Park
  - Olcott Park
  - Goat Farm
  - Winslow Woods Park
  - RCA Park



Over 206 Acres Treated

Treatment- Hand Pulling,  
Herbicide

# Other Woody Invasives:

## Callery Pear, Multiflora Rose, Tree of Heaven

- Areas of Main Concern
  - Olcott Park
  - Goat Farm
  - Bryan Park



9.87 Acres Treated  
Treatment- Mowing, herbicide  
(cut stump, basal bark, foliar),

# Native Plant Installations

## 4,858 Native Plants Installed

- Showers Building
- Courthouse Square
- Mills Pool
- Rose Hill Cemetery
- Goat Farm Spring
- Griffy Lake Shoreline

## Wapehani Dam Salvage

- Allison Jukebox
- Miller-Showers Park



# Native Tree Planting

- Over 3,000 DNR Saplings planted
  - Trees donated by Eco Logic, LLC
  - Soil stabilization
  - Mast Production/wildlife value
  - Carbon sequestration
  - Oaks, Hickories, Walnut, Cherry
- Locations
  - Southeast Park
  - Griffy Lake Nature Preserve
  - Rev. Ernest Butler Park





# Management Plans

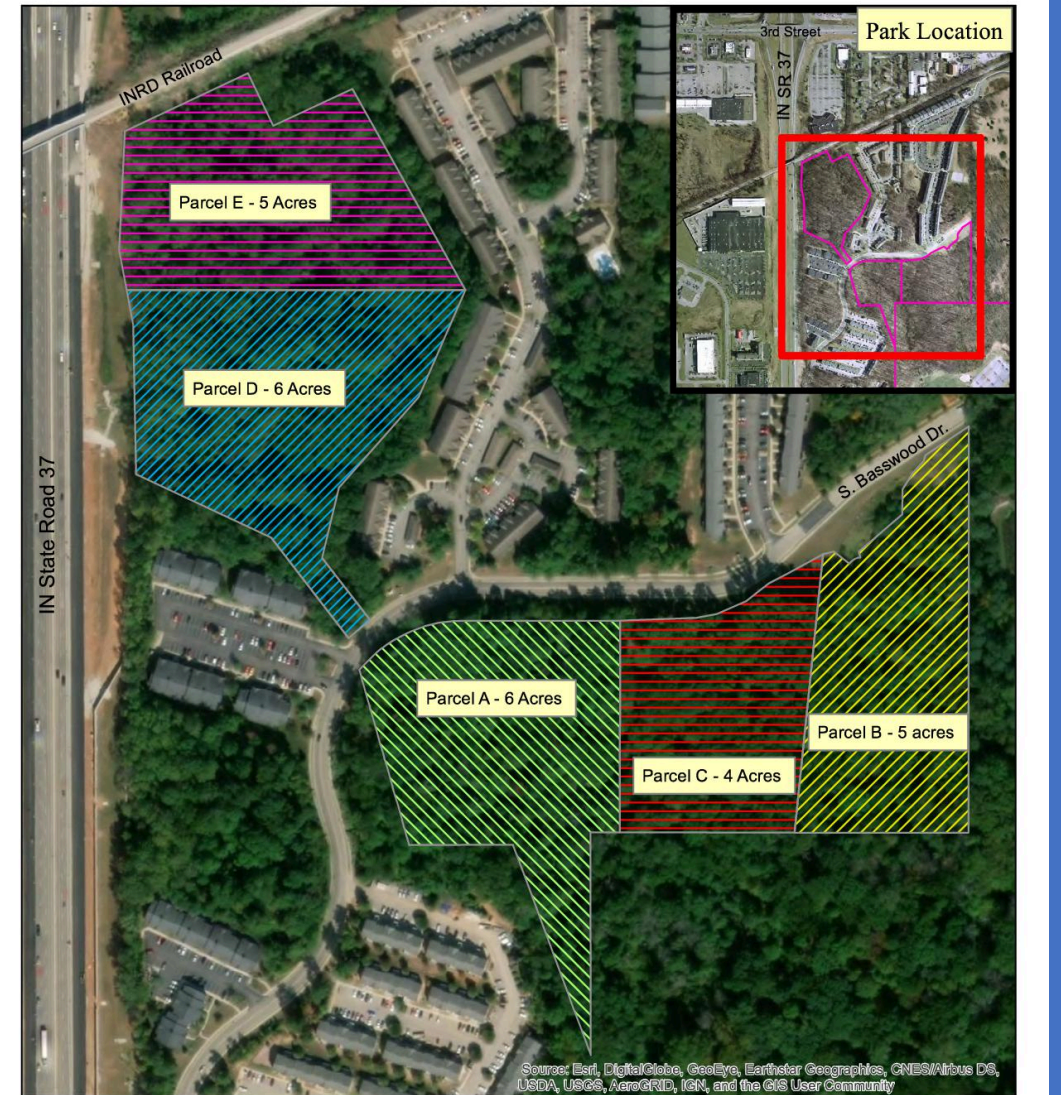
Completed by Eco Logic, LLC



# Browns Woods

- Heavily infested with Asian Bush Honeysuckle
  - Low biodiversity in herb layer
- Storm water
- Deer Browse

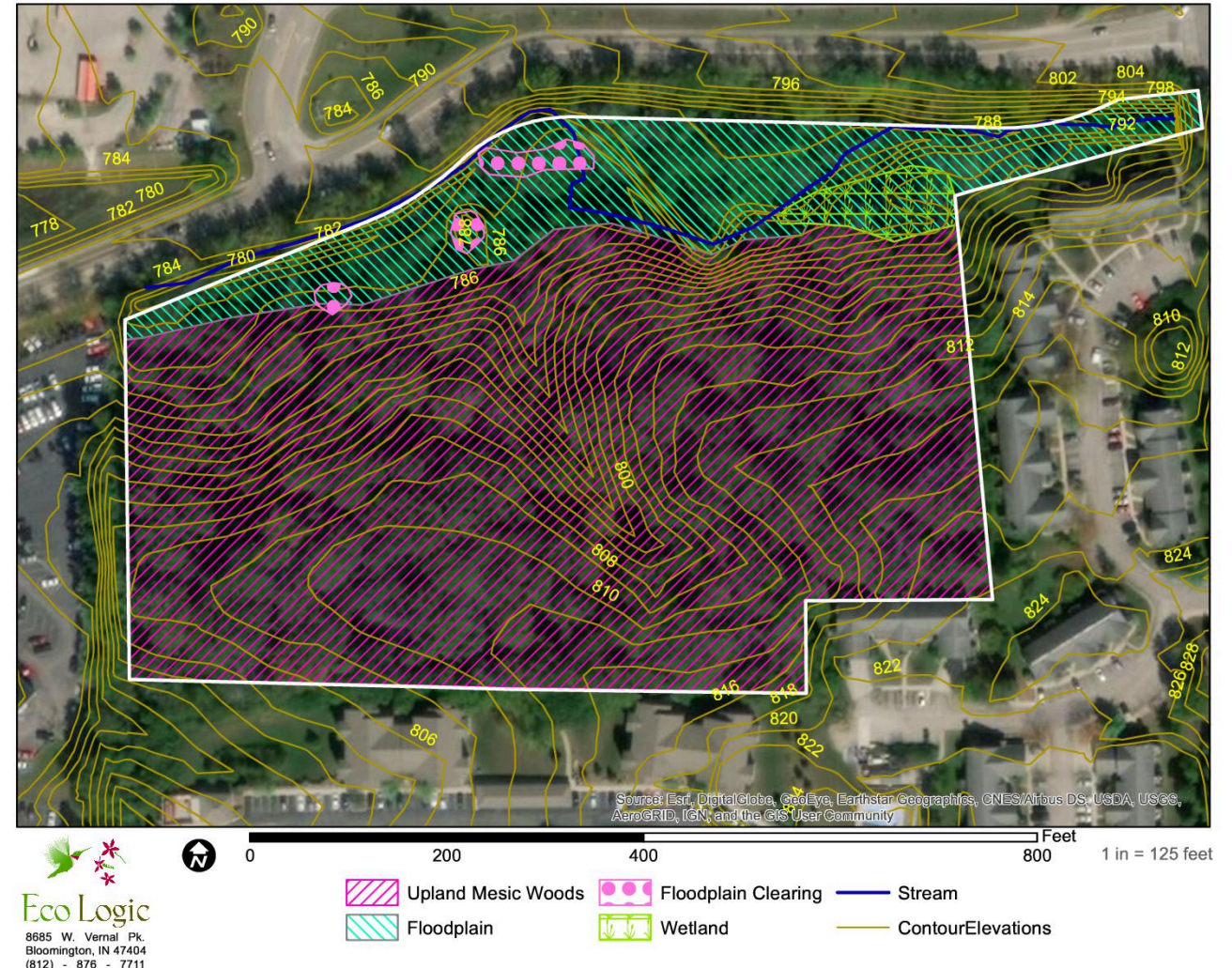
## Browns Woods Restoration Parcels



# Latimer Woods

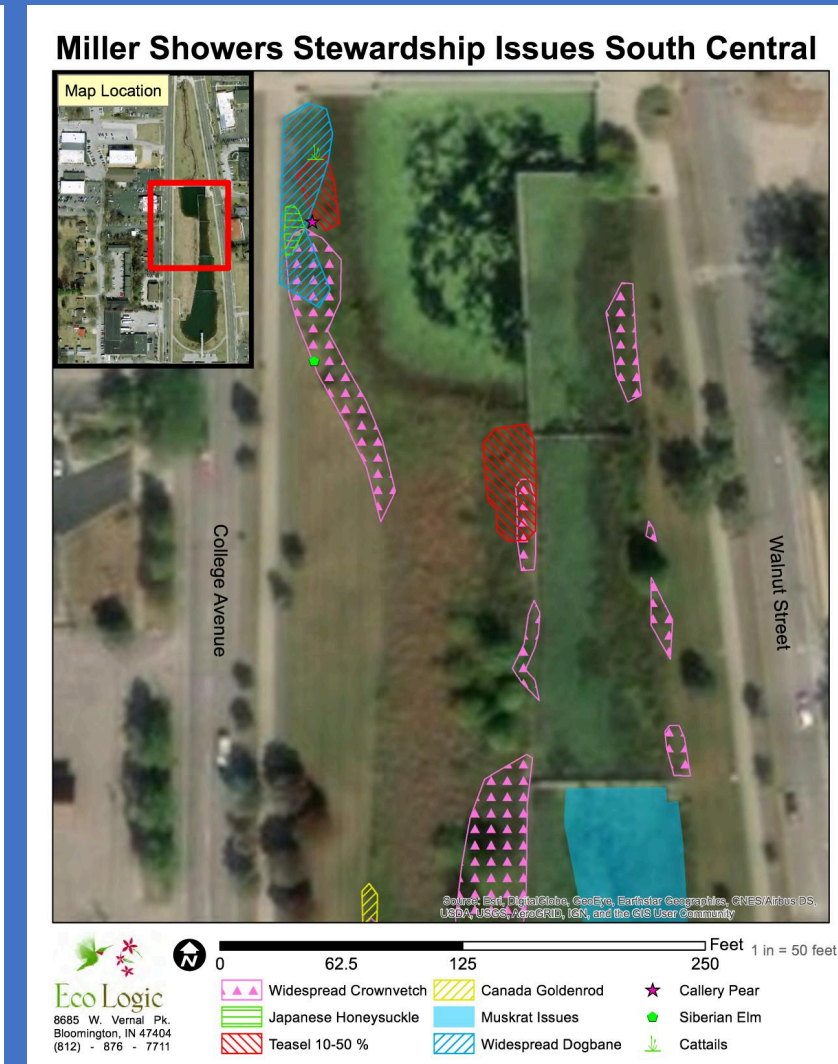
- Flashy Storm water
- Edge Issues
  - Increased trash, invasive species
- Invasives
  - Asian Bush Honeysuckle
  - Oriental Bittersweet
  - Lesser Celandine
  - Purple Wintercreeper
    - Volunteer Opportunities

Latimer Woods Native Plant Communities and Physical Features



# Miller-Showers Park

- Invasive Species
  - Crown Vetch
  - Common Teasel
  - Callery Pear
  - Bush Honeysuckle
- Sedimentation
- Algae

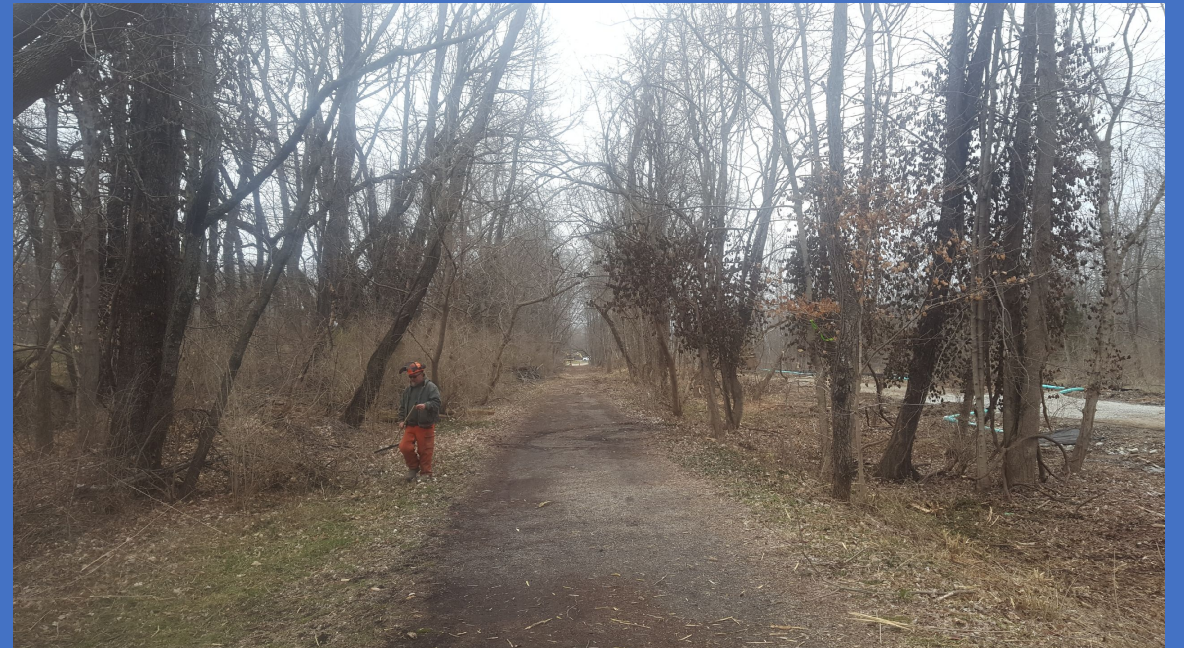


# Projects



# Bloomington Rail Trail

- FECON
- Asian Bush Honeysuckle
- Purple Wintercreeper Vine
- Oriental Bittersweet Vine



# Prairie Restoration

- Locations
  - Olcott Park
  - Goat Farm
- Invasives:
  - Canada Goldenrod
  - Canada Thistle
  - Woody Invasives



# Griffy Shoreline Stabilization

- Goals
  - Reduce Sedimentation
  - Reduce Nutrient Loading
  - Provide Pollinator Habitat
  - Trash Buffer
  - Aesthetic



# Outreach

- Volunteers – 800 hours!
- Education
- Preventative rather than Reactive



# Next Steps for 2019



# Griffy Ecological Assessment

- Addressing Climate Change
- Ecosystem Resiliency
- Flagship species such as blueberries
- Nuts and bolts management plan



# Griffy and Fire

- Historical Management Style
- Promotes forest health
  - Oak/Hickory Regeneration
  - Native Blueberry and Huckleberry Production



# 1st Saturdays Field Days

- First Saturday of the month  
March – November
- In partnership with MC-IRIS
- Education and  
volunteerism focused on  
preserving biodiversity



# Miller-Showers Installation

- 4,179 Native Perennials
- Focused on improving “curb appeal”

