

ADDENDUM NO. 1
TO THE
DRAWINGS AND SPECIFICATIONS
FOR THE
Bloomfield Road, Arlington Road Paving Project

Issued From: The City of Bloomington
Planning and Transportation Department
Post Office Box 100
401 North Morton Street, Suite #130
Bloomington, Indiana 47402

Issue Date: November 15th, 2019

Letting Date: November 20th, 2019

This Addendum No.1 to the drawings and specifications shall supplement, amend and become a part of the Bid documents, plans, and specifications for the Bloomfield Road, Arlington Road Paving Project. All bids and construction contracts shall be based on these modifications to the original contract documents. Bidders shall acknowledge receipt of this Addendum on the Bid Form. Failure to do so may subject the Bidder to disqualification.

Item No. 1: A pre-bid meeting was conducted on Friday, November 8th, 2019. The following is a partial list of items that were addressed in that meeting:

- 1) This project will utilize Community Crossing Matching Grant (CCMG) funds. Therefore all material placed will require delivery ticket to be submitted in order to be eligible for payment. The delivery tickets must specify where on the project the materials were placed.
- 2) All Bidders must have an Affirmative Action Plan (AAP) and a Drug Testing Policy approved by the City Legal Department prior to the letting date. Additionally, and a relatively new requirement, is that each Bidder must have a Harassment Policy approved as a part of their AAP.
- 3) The cost for temporary pavement markings shall be included in the cost of *MAINTAINING TRAFFIC*. The use of temporary skip pavement markings are approved for short duration temporary traffic control.


Item No. 2: All of the following changes to the project requirements have been posted to an updated version of the Proposal Schedule of Pay Items. Bidders shall ensure they use the schedule that is attached to this Addendum.

1. An additional two (2) loop detectors have been added to the quantities on Bloomfield Road for a total of fourteen (14) loop detectors. Quantities for *SIGNAL CABLE, ROADWAY LOOP, COPPER, 1C/14 GA* and *SAW CUT FOR ROADWAY LOOP DETECTOR AND SEALANT* have been adjusted accordingly.

Item No. 3: Plans for the project have been added to the website and attached to this addendum. Additionally, a red-line plan sheet for the construction of the Bloomfield-SR45 intersection has been included as a reference.

Item No. 4: Questions and Answers

- (Q) Will there be an item added for removal of the RPM's on Arlington or Bloomfield Roads or will that cost be incidental to the Snowplowable Raised Pavement Markers?
(A) The cost of removal of the existing RPM's shall be included in the cost of *MILLING, ASPHALT, 1 1/2 IN.*
- (Q) Will there be any intersections or turn lanes to pave as part of either of these projects?
(A) Yes, intersections and turn lanes are included in this project. See plan sheets to determine milling and paving limits.

	<p>CERTIFIED BY: </p> <p>NEIL KOPPER INTERIM TRANSPORTATION & TRAFFIC ENGINEER CITY OF BLOOMINGTON, IN</p>
--	---

Acknowledge receipt of the addendum by representing it on the Bid Form in Section B and submitting a signed copy with your bid proposal.

RECEIVED BY: CONTRACTOR (FIRM AND ADDRESS)

SIGNATURE: _____

DATE: _____

PRINTED NAME: _____

TITLE: _____



Project Title : ARLINGTON ROAD PAVING

LINE	ITEM	DESCRIPTION	Approximate Quantity and Units	UNITS	UNIT PRICE	BID AMOUNT
A 001	105-06845	CONSTRUCTION ENGINEERING	1	LS	-	-
A 002	109-08359	LIQUIDATED DAMAGES	1	LS	\$1.00	\$1.00
A 003	110-01001	MOBILIZATION AND DEMOBILIZATION	1	LS	-	-
A 004	306-08034	MILLING, ASPHALT, 1 1/2 IN.	24646	SYS	-	-
A 005	401-10258	JOINT ADHESIVE, SURFACE	16976	LFT	-	-
A 006	401-07321	HMA, 2, 64, SURFACE, 9.5mm (TYPE B)	2034	TON	-	-
A 007	406-05521	ASPHALT FOR TACK COAT	24646	SYS	-	-
A 008	720-44000	CASTING, ADJUST TO GRADE, MANHOLE AND INLETS	2	EACH	-	-
A 009	720-94840	CASTING, VALVE, ADJUST TO GRADE	14	EACH	-	-
A 010	801-06775	MAINTAINING TRAFFIC	1	LS	-	-
A 011	808-06703	LINE, THERMOPLASTIC, SOLID, WHITE, 4"	10133	LFT	-	-
A 012	808-09381	RETRO-REFLECTIVITY TESTING	1	LUMP	-	-
A 013	808-75245	LINE, THERMOPLASTIC, SOLID, YELLOW, 4"	9962	LFT	-	-
A 014	808-75297	TRANSVERSE MARKING, THERMOPLASTIC, STOP LINE, 24 IN	20	LFT	-	-
A 015	808-75998	SNOWPLOWABL RAISED PAVEMENT MARKER	90	EACH	-	-

TOTAL ARLINGTON BASE BID (A001 thru A015): -

CONTINUED TO NEXT PAGE



Project Title : BLOOMFIELD ROAD PAVING

LINE	ITEM	DESCRIPTION	Approximate Quantity and Units	UNITS	UNIT PRICE	BID AMOUNT
B 001	105-06845	CONSTRUCTION ENGINEERING	1	LS	-	-
B 002	109-08359	LIQUIDATED DAMAGES	1	LS	\$1.00	\$1.00
B 003	110-01001	MOBILIZATION AND DEMOBILIZATION	1	LS	-	-
B 004	306-08034	MILLING, ASPHALT, 1 1/2 IN.	28895	SYS	-	-
B 005	401-10258	JOINT ADHESIVE, SURFACE	17738	LFT	-	-
B 006	401-07321	HMA, 2, 64, SURFACE, 9.5mm (TYPE B)	2503	TON	-	-
B 007	406-05521	ASPHALT FOR TACK COAT	28895	SYS	-	-
B 008	720-44000	CASTING, ADJUST TO GRADE, MANHOLE AND INLETS	16	EACH	-	-
B 009	720-94840	CASTING, VALVE, ADJUST TO GRADE	12	EACH	-	-
B 010	801-06775	MAINTAINING TRAFFIC	1	LS	-	-
B 011	805-78470	SIGNAL CABLE, ROADWAY LOOP, COPPER, 1C/14 GA	770	LFT	-	-
B 012	805-78795	SAW CUT FOR ROADWAY LOOP DETECTOR AND SEALANT	810	LFT	-	-
B 013	808-03439	TRANSVERSE MARKING, THERMOPLASTIC, CROSSWALK LINE, WHITE, 24 IN.	240	LFT	-	-
B 014	808-06701	LINE, THERMOPLASTIC, BROKEN, WHITE, 4 IN.	938	LFT	-	-
B 015	808-06703	LINE, THERMOPLASTIC, SOLID, WHITE, 4 IN.	8690	LFT	-	-
B 016	808-09381	RETRO-REFLECTIVITY TESTING	1	LUMP	-	-
B 016	808-75240	LINE, THERMOPLASTIC, BROKEN, YELLOW, 4 IN.	3355	LFT	-	-
B 017	808-75245	LINE, THERMOPLASTIC, SOLID, YELLOW, 4 IN.	7869	LFT	-	-
B 018	808-75297	TRANSVERSE MARKING, THERMOPLASTIC, STOP LINE, 24 IN	136	LFT	-	-
B 019	808-75320	PAVEMENT MESSAGE MARKING, THERMOPLASTIC, LANE INDICATION ARROW	27	EACH	-	-
B 020	808-75325	PAVEMENT MESSAGE MARKING, THERMOPLASTIC, (ONLY)	8	EACH	-	-
B 021	808-75998	SNOWPLOWABL RAISED PAVEMENT MARKER	83	EACH	-	-

TOTAL BLOOMFIELD BASE BID (B001 thru B021):

Bidder acknowledges that:

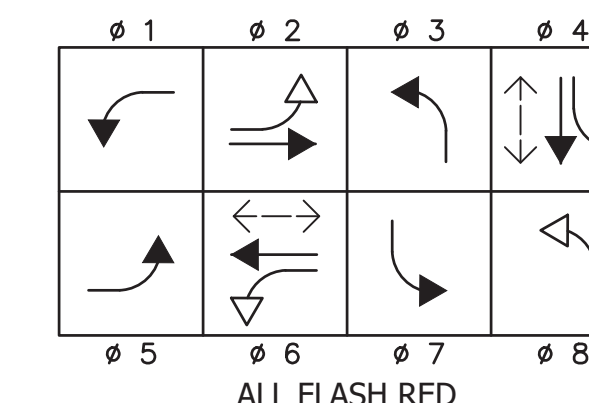
- each Bid Unit Price includes an amount considered by Bidder to be adequate to cover Contractor's overhead and profit for each separately identified item, and
- estimated quantities are not guaranteed, and are solely for the purpose of comparison of Bids, and final payment for all Unit Price Work will be based on actual quantities, determined as provided in the Contract Documents.

LOOP TAGGING TABLE

Loop No or Channel	Direction	Lane	Phase	Loops	C	C #	Lead-in and Rack Labels
-	E	L	5	1,2,3,4	*		-EL5-1,2,3,4 *
-	E	A	2	1,2,3,4	*		-EA2-1,2,3,4 *
-	E	B	2	1,2,3,4	*		-EB2-1,2,3,4 *
-	E	R	2	1,2,3,4	*		-ER2-1,2,3,4 *
-	S	L	7	1,2,3,4	*		-SL7-1,2,3,4 *
-	S	A	4	1,2,3,4	*		-SA4-1,2,3,4 *
-	W	L	1	1,2,3,4	*		-WL1-1,2,3,4 *
-	W	A	6	1,2,3,4	*		-WA6-1,2,3,4 *
-	W	B	6	1,2,3,4	*		-WB6-1,2,3,4 *
-	N	L	3	1	*		-NL3-1 *
-	N	A	8	1	*		-NA8-1 *
-	E	A	2	5			-EA2-5
-	E	B	2	5			-EB2-5
-	W	A	6	5			-WA6-5
-	W	B	6	5			-WB6-5
-	N	L	3	2,3,4			-NL3-2,3,4
-	N	A	8	2,3			-NA8-2,3

- NOTES:**
- All existing signal cables to be removed and replaced.
 - All signs shown on plans are for information only. Refer to signing plans for additional ground mounted and catenary span mounted signs.
 - Existing video detection cameras and arms to be removed. Equipment to remain the property of the City of Bloomington.

PHASE DIAGRAM



LEGEND

- Exist. controller/cabinet
- Exist. strain pole
- Exist. detector housing
- Exist. 1 way, 3 section (12" red, 12" amber, 12" green) Signal indication
- Exist. 1 way, 3 section (12" red, 12" amber arrow, 12" green arrow) Signal indication
- Exist. 1 way, 5 section (12" red, 12" amber & arrow, 12" green & arrow) Signal indication
- Exist. sensor loop
- Exist. traffic handhole
- Exist. video detection
- Controller/cabinet
- Strain pole
- Yagi Antenna (with Ethernet Radio)
- Cable, Coaxial for Antenna
- Signal pedestal on Type "A" foundation
- Pedestrian indication
- Push button
- Traffic handhole
- Disconnect hanger
- 2" Steel Conduit
- Detector housing
- 1 way, 3 section (12" red, 12" amber, 12" green) signal indication with back plate
- 1 way, 3 section (12" red arrow, 12" amber arrow & 12" green arrow) signal indication with back plate
- 1 way, 5 section (12" red, 12" amber & arrow, 12" green & arrow) signal indication with back plate
- 1 way, 4 section (12" red arrow, 12" amber flashing arrow, 12" amber arrow, 12" green arrow) signal indication with back plate
- Proposed sensor loop
- Proposed sign on overhead span
- Proposed sheet sign

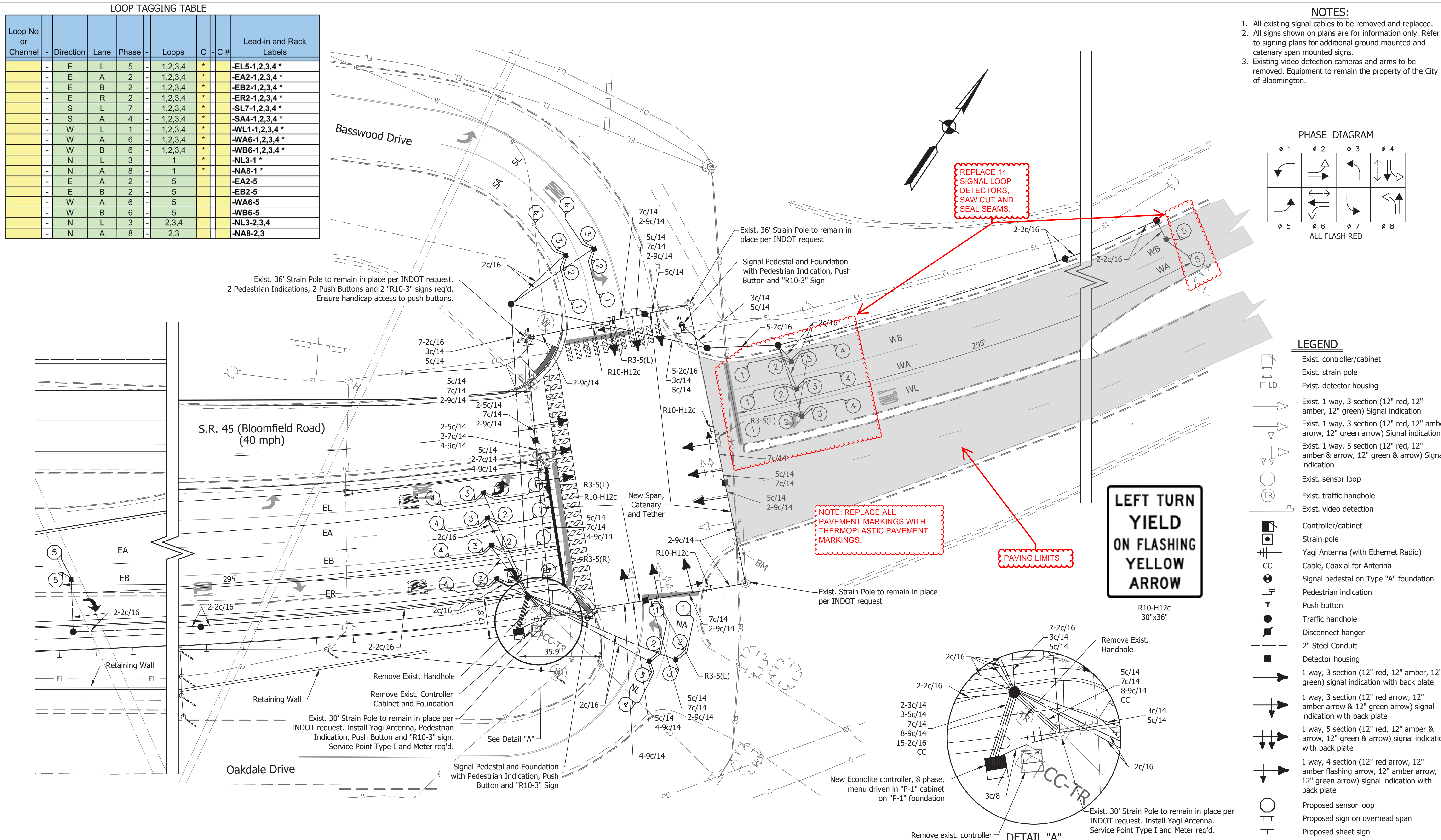
**LEFT TURN
YIELD
ON FLASHING
YELLOW
ARROW**

R10-H12c
30"x36"

PAVING LIMITS

NOTE: REPLACE ALL
PAVEMENT MARKINGS WITH
THERMOPLASTIC PAVEMENT
MARKINGS.

REPLACE 14
SIGNAL LOOP
DETECTORS,
SAW CUT AND
SEAL SEAMS.



Exist. 36' Strain Pole to remain in place per INDOT request.
2 Pedestrian Indications, 2 Push Buttons and 2 "R10-3" signs req'd.
Ensure handicap access to push buttons.

Exist. 36' Strain Pole to remain in place per INDOT request
Signal Pedestal and Foundation with Pedestrian Indication, Push Button and "R10-3" Sign

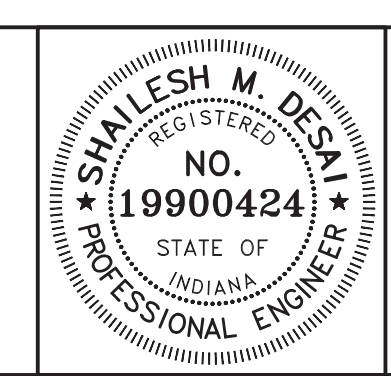
Exist. Strain Pole to remain in place per INDOT request

Exist. 30' Strain Pole to remain in place per INDOT request. Install Yagi Antenna, Pedestrian Indication, Push Button and "R10-3" sign. Service Point Type I and Meter req'd.

Remove exist. controller cabinet and foundation
Exist. 30' Strain Pole to remain in place per INDOT request. Install Yagi Antenna. Service Point Type I and Meter req'd.

DIRECTORY: F:\2017\17-3790 I-69 sec 5 d1z30 sheet drawings\70 Signal\SR 45 DU 06-01.dwg
 FILE: 1297885-TR-S-SIGPLN-06-01.dwg
 DIMSCALE: 1/8" = 1' LTSCALE: 20
 PLOTTED BY: tebback
 DATE: Dec 08, 2017 - 3:36pm

DATE	REVISION
11/1/2017	FDC-582 - Updated signal plans
12/13/2017	NDC-311 - SR 45 Intersection Revisions



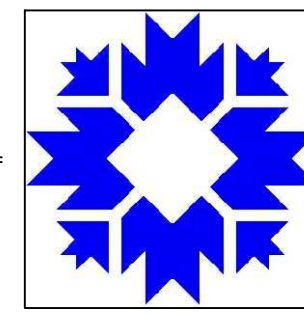
RECOMMENDED FOR APPROVAL	<i>Shailesh M. Desai</i>	11/1/2017
DESIGNED:	SMD	DRAWN:
CHECKED:	JRE	CHECKED:
		SMD

INDIANA
DEPARTMENT OF TRANSPORTATION

TRAFFIC SIGNAL MODERNIZATION, DU 6
S.R. 45 @ BASSWOOD / OAKDALE DRIVE
MONROE COUNTY SEYMOUR DISTRICT

COMM. NO.		
SCALE	BRIDGE FILE	
1" = 20'	N/A	
DESIGNATION		
1297885		
SURVEY BOOK	DWG NO.	SHEET
N/A	TR-SG-04	58B of 77
CONTRACT	PROJECT	
XXXX	1297885	

CITY OF BLOOMINGTON
ENGINEERING DEPARTMENT



NORTH ARLINGTON ROAD
MILL AND REPAVE

ROUTE: NORTH ARLINGTON ROAD



CITY OF BLOOMINGTON
MONROE COUNTY
INDIANA

INDIANA DEPARTMENT OF TRANSPORTATION
STANDARD SPECIFICATIONS DATED 2020
AND CURRENT SUPPLEMENTS THERETO, TO
BE USED WITH THESE PLANS

RECOMMENDED FOR APPROVAL _____	
CITY ENGINEER _____	DATE _____
DESIGNED: _____	DRAWN: _____
CHECKED: _____	CHECKED: XX

**CITY OF BLOOMINGTON
ENGINEERING DEPARTMENT**

NORTH ARLINGTON ROAD
MILL AND REPAVE

HORIZONTAL SCALE	BRIDGE FILE
VERTICLE SCALE	DESIGNATION
SURVEY BOOK	SHEETS
CONTRACT	1 of 4
	PROJECT

I:\common\Transportation Engineering\Projects\Bloomfield Paving 2020\Plan Set\CAD\ARLINGTON-3.dwg



1. SEAM SEAL ALL TRANSVERSE AND LONGITUDINAL PAVEMENT JOINTS.
2. COST OF RPM REMOVAL TO BE INCLUDED IN THE COST OF MILLING.
3. REPLACE ALL PAVEMENT MARKINGS.
4. COST OF TEMPORARY PAVEMENT MARKINGS SHALL BE INCLUDED IN THE COST OF MAINTENANCE OF TRAFFIC.

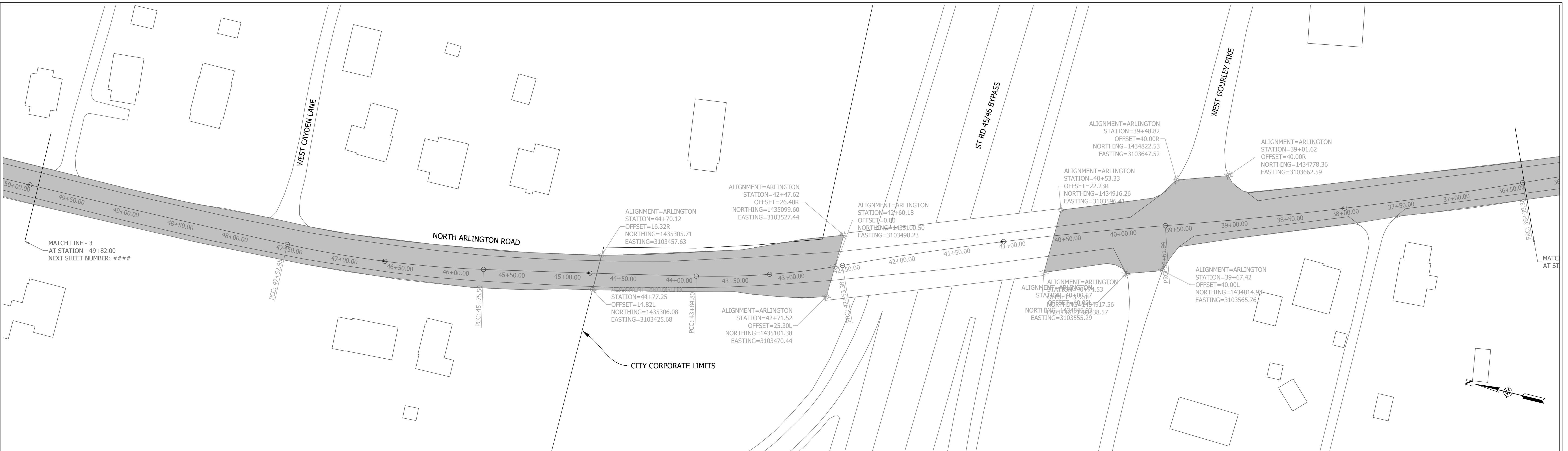
RECOMMENDED FOR APPROVAL	CITY ENGINEER	DATE
DESIGNED:	DRAWN:	
CHECKED:	CHECKED:	

**CITY OF BLOOMINGTON
ENGINEERING DIVISION**

**NORTH ARLINGTON ROAD
MILL AND REPAVING**

HORIZONTAL SCALE	BRIDGE FILE
1" = 40'	DESIGNATION
VERTICLE SCALE	SHEETS
	2 of 4
SURVEY BOOK	PROJECT
CONTRACT	

I:\common\Transportation Engineering\Projects\Bloomington-Bloomfield Paving 2020\Plan_Sets\CAD\ARLINGTON\3.dwg
 11/2/2019



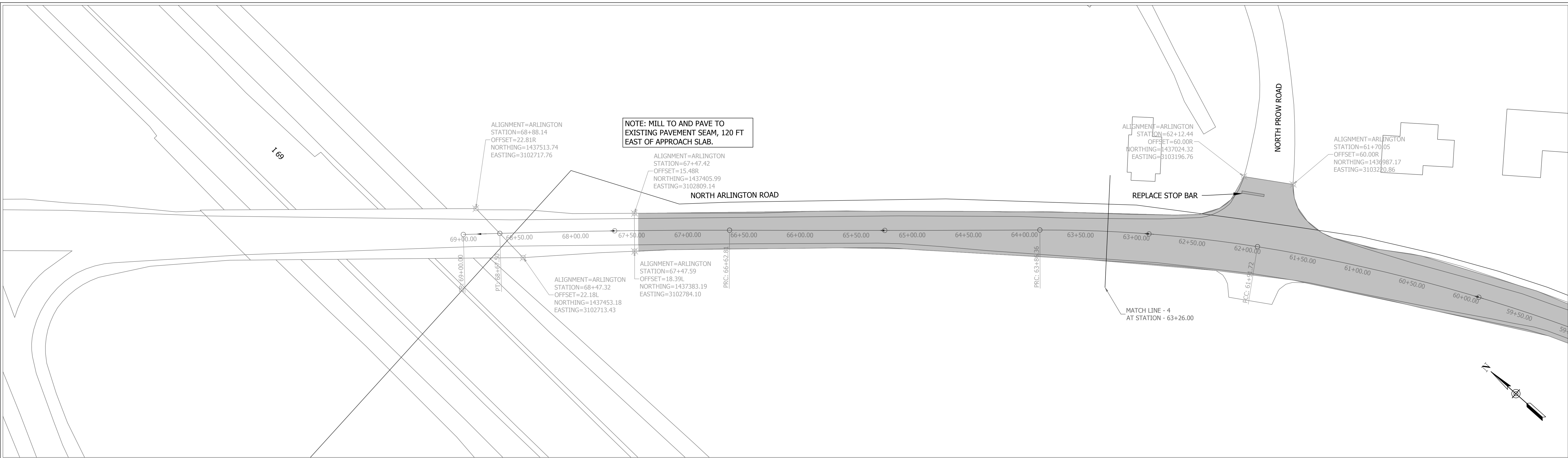
- SEAM SEAL ALL TRANSVERSE AND LONGITUDINAL PAVEMENT JOINTS.
- COST OF RPM REMOVAL TO BE INCLUDED IN THE COST OF MILLING.
- REPLACE ALL PAVEMENT MARKINGS.
- COST OF TEMPORARY PAVEMENT MARKINGS SHALL BE INCLUDED IN THE COST OF MAINTENANCE OF TRAFFIC.

RECOMMENDED FOR APPROVAL	CITY ENGINEER	DATE
DESIGNED:	DRAWN:	
CHECKED:	CHECKED:	

**CITY OF BLOOMINGTON
 ENGINEERING DIVISION**

**NORTH ARLINGTON ROAD
 MILL AND REPAVING**

HORIZONTAL SCALE	BRIDGE FILE
1" = 40'	DESIGNATION
VERTICLE SCALE	SHEETS
	3 of 4
SURVEY BOOK	PROJECT
CONTRACT	



1. SEAM SEAL ALL TRANSVERSE AND LONGITUDINAL PAVEMENT JOINTS.
2. COST OF RPM REMOVAL TO BE INCLUDED IN THE COST OF MILLING.
3. REPLACE ALL PAVEMENT MARKINGS.
4. COST OF TEMPORARY PAVEMENT MARKINGS SHALL BE INCLUDED IN THE COST OF MAINTENANCE OF TRAFFIC.

RECOMMENDED FOR APPROVAL _____	
CITY ENGINEER	DATE
DESIGNED: _____	DRAWN: _____
CHECKED: _____	CHECKED: _____

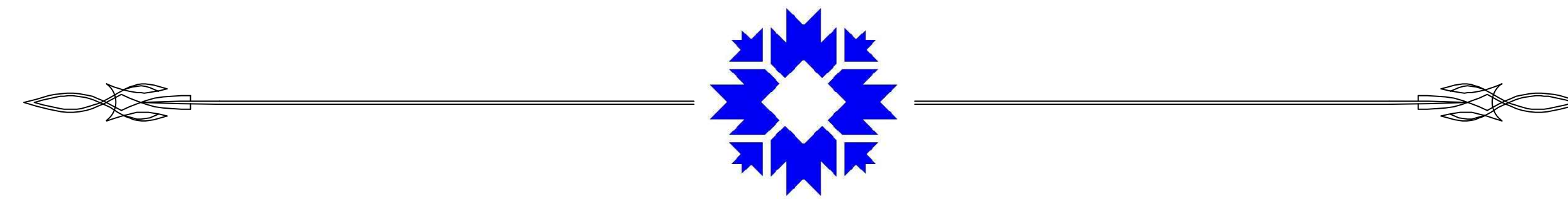
**CITY OF BLOOMINGTON
ENGINEERING DIVISION**

**NORTH ARLINGTON ROAD
MILL AND REPAVING**

HORIZONTAL SCALE 1" = 40'	BRIDGE FILE
VERTICLE SCALE	DESIGNATION
SURVEY BOOK	SHEETS 4 of 4
CONTRACT	PROJECT

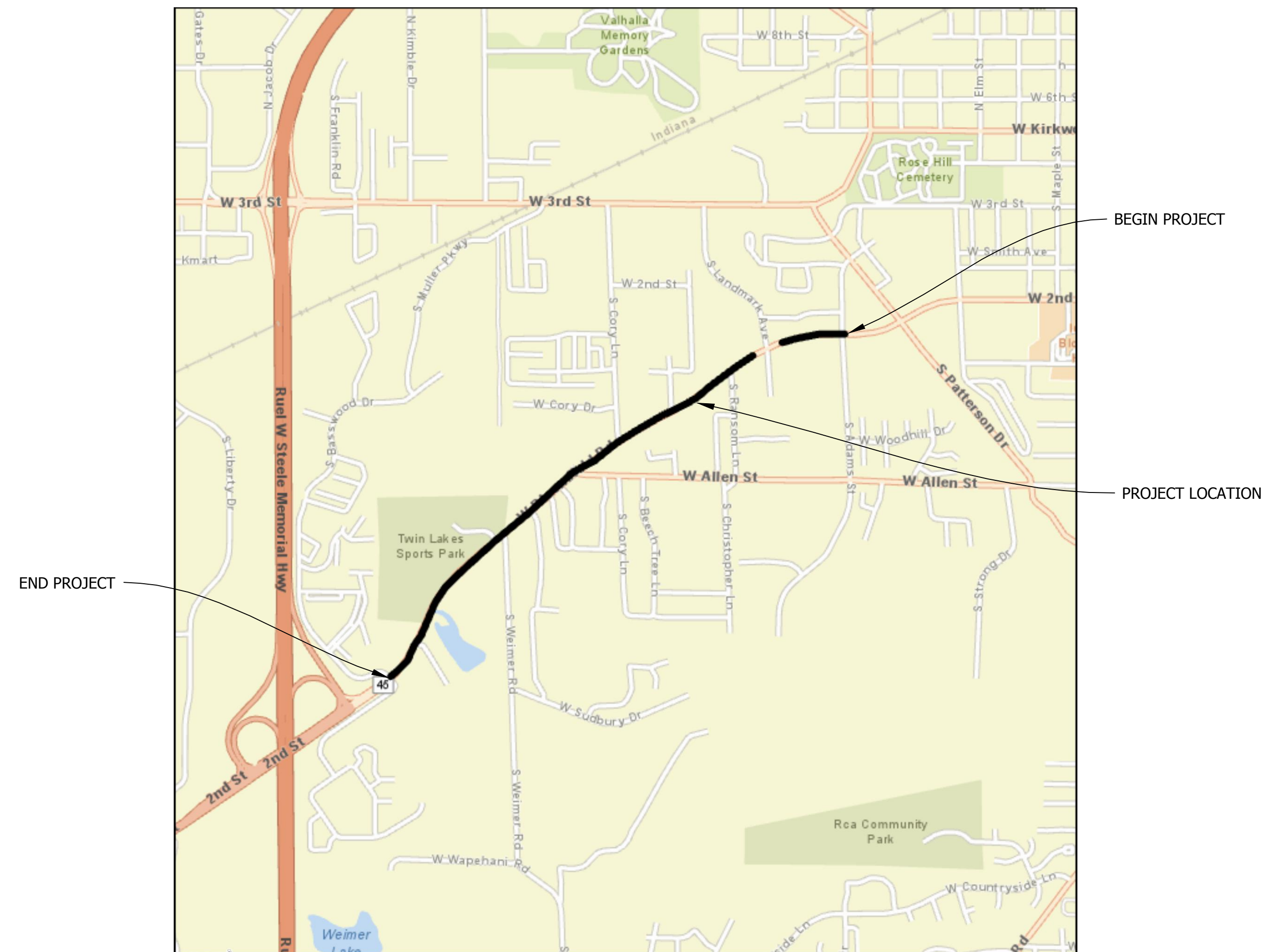
I:\common\Transportation Engineering\Projects\Arlington-Bloomfield Paving 2020\Plan_Sets\CAD\ARLINGTON-3.dwg 11/2/2019

CITY OF BLOOMINGTON
ENGINEERING DEPARTMENT



WEST BLOOMFIELD
ROAD PAVING

ROUTE: WEST BLOOMFIELD ROAD



CITY OF BLOOMINGTON
MONROE COUNTY
INDIANA

INDIANA DEPARTMENT OF TRANSPORTATION
STANDARD SPECIFICATIONS DATED 2020
AND CURRENT SUPPLEMENTS THERETO, TO
BE USED WITH THESE PLANS

I:\common\Transportation Engineering\Projects\Arlington-Bloomfield Paving 2020\Plan Set\CAD\Bloomfield 3.dwg
9/6/2013

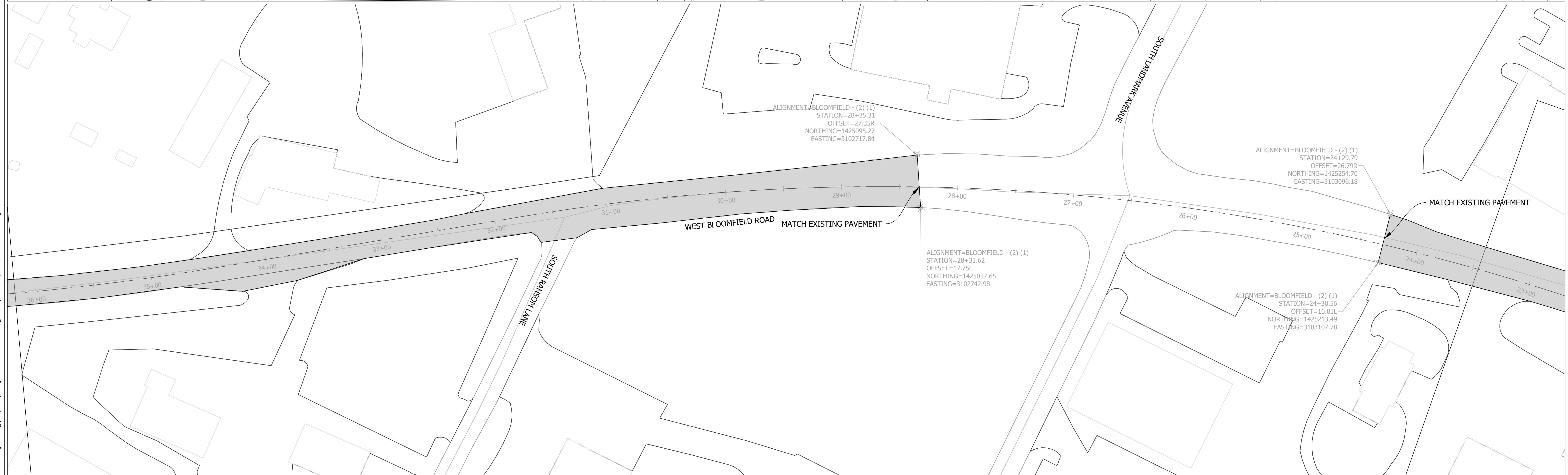
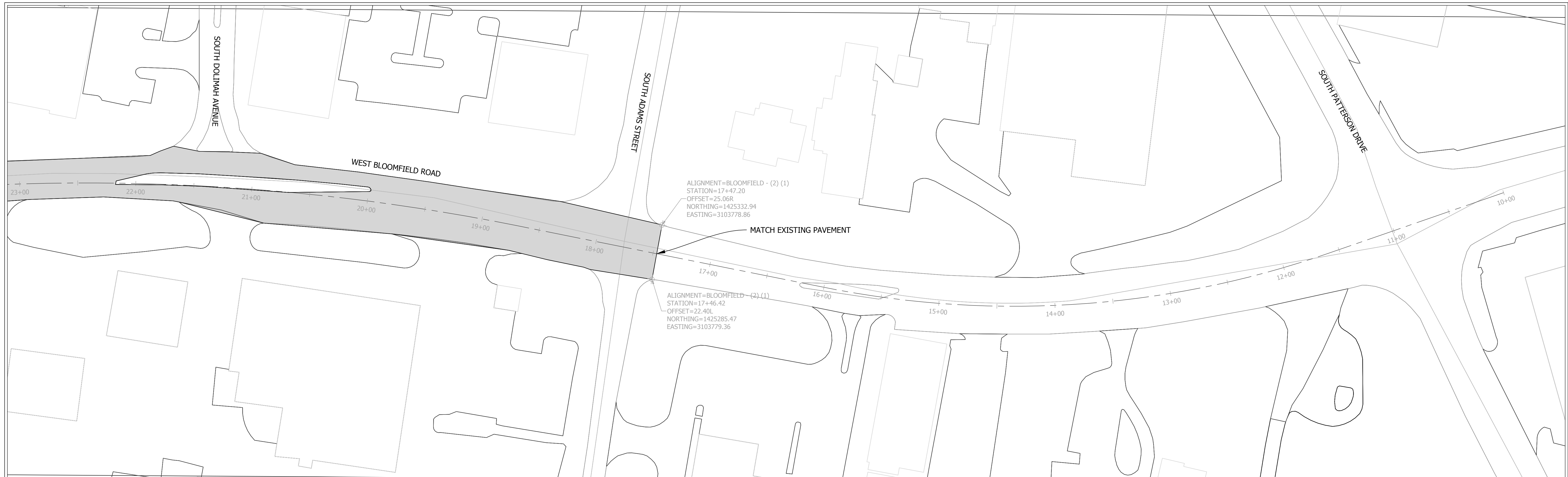
RECOMMENDED
FOR APPROVAL _____
CITY ENGINEER DATE

DESIGNED: _____ DRAWN: _____
CHECKED: _____ CHECKED: _____

CITY OF BLOOMINGTON
ENGINEERING DEPARTMENT

BLOOMFIELD ROAD
PAVING PLAN

HORIZONTAL SCALE	BRIDGE FILE
VERTICLE SCALE	DESIGNATION
SURVEY BOOK	SHEETS
CONTRACT	1 of 4 PROJECT



I:\common\Transportation Engineering\Projects\Arlington-Bloomfield Paving 2020\Plan Set\CAD\Bloomfield 3.dwg 9/6/2013

1. REMOVE ALL EXISTING RPM'S AND REPLACE WITH NEW. COST OF REMOVAL SHALL BE INCLUDED IN THE COST OF MILLING.
2. THE COST OF TEMPORARY PAVEMENT MARKINGS ARE TO BE INCLUDED IN THE COST OF MAINTENANCE OF TRAFFIC.
3. SEAM SEAL ALL LONGITUDINAL AND TRANSVERSE PAVEMENT JOINTS.
4. CONTRACTOR SHALL REPLACE ALL PAVEMENT MARKINGS AS CURRENTLY CONFIGURED.

RECOMMENDED FOR APPROVAL	
CITY ENGINEER	DATE
DESIGNED:	DRAWN:
CHECKED:	CHECKED:

**CITY OF BLOOMINGTON
ENGINEERING DEPARTMENT**

**BLOOMFIELD ROAD
PAVING PLAN**

HORIZONTAL SCALE 1" = 40'	BRIDGE FILE
VERTICLE SCALE	DESIGNATION
SURVEY BOOK	SHEETS
CONTRACT	2 of 4
	PROJECT

I:\Common\Transportation\Engineering\Projects\Arlington-Bloomfield Paving 2020\Plan Set\CAD\Bloomfield 3.dwg 9/6/2013



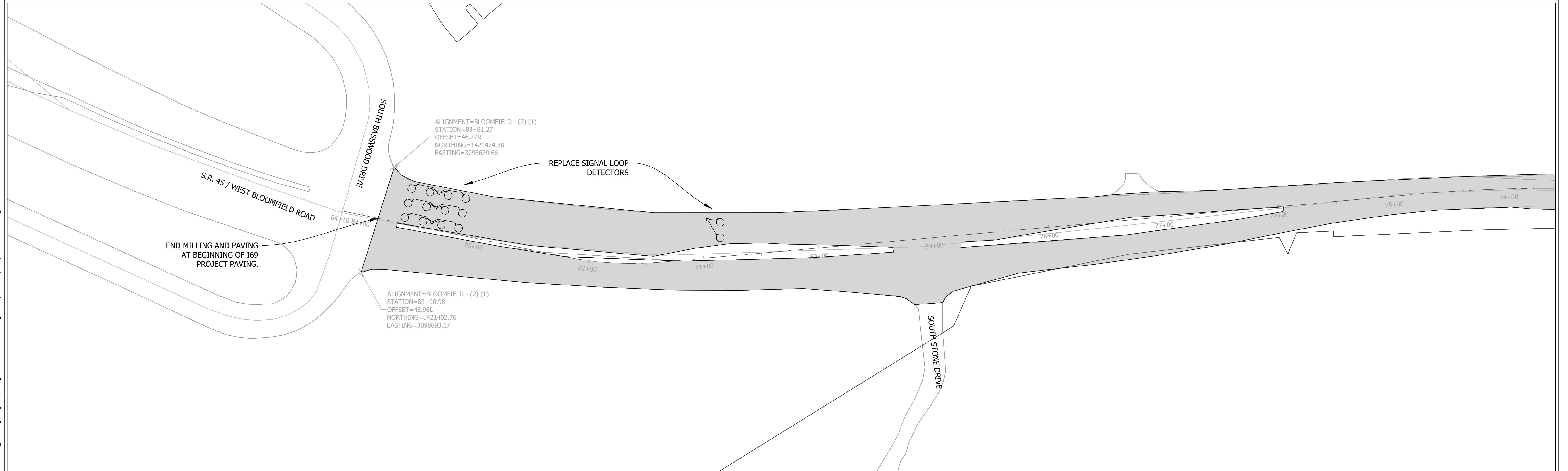
1. REMOVE ALL EXISTING RPM'S AND REPLACE WITH NEW. COST OF REMOVAL SHALL BE INCLUDED IN THE COST OF MILLING.
2. THE COST OF TEMPORARY PAVEMENT MARKINGS ARE TO BE INCLUDED IN THE COST OF MAINTENANCE OF TRAFFIC.
3. SEAM SEAL ALL LONGITUDINAL AND TRANSVERSE PAVEMENT JOINTS.
4. CONTRACTOR SHALL REPLACE ALL PAVEMENT MARKINGS AS CURRENTLY CONFIGURED.

RECOMMENDED FOR APPROVAL _____	
CITY ENGINEER	DATE
DESIGNED: _____	DRAWN: _____
CHECKED: _____	CHECKED: _____

**CITY OF BLOOMINGTON
ENGINEERING DEPARTMENT**

**BLOOMFIELD ROAD
PAVING PLAN**

HORIZONTAL SCALE 1" = 40'	BRIDGE FILE
VERTICLE SCALE	DESIGNATION
SURVEY BOOK	SHEETS
CONTRACT	3 of 4
	PROJECT



I:\common\Transportation Engineering\Projects\Arlington-Bloomfield Paving 2020\Plan Set\CAD\Bloomfield 3.dwg 9/6/2013

1. REMOVE ALL EXISTING RPM'S AND REPLACE WITH NEW. COST OF REMOVAL SHALL BE INCLUDED IN THE COST OF MILLING.
2. THE COST OF TEMPORARY PAVEMENT MARKINGS ARE TO BE INCLUDED IN THE COST OF MAINTENANCE OF TRAFFIC.
3. SEAM SEAL ALL LONGITUDINAL AND TRANSVERSE PAVEMENT JOINTS.
4. CONTRACTOR SHALL REPLACE ALL PAVEMENT MARKINGS AS CURRENTLY CONFIGURED.

RECOMMENDED FOR APPROVAL _____
 CITY ENGINEER DATE

DESIGNED: _____ DRAWN: _____
 CHECKED: _____ CHECKED: _____

**CITY OF BLOOMINGTON
 ENGINEERING DEPARTMENT**

BLOOMFIELD ROAD
 PAVING PLAN

HORIZONTAL SCALE 1" = 40'	BRIDGE FILE
VERTICLE SCALE	DESIGNATION
SURVEY BOOK	SHEETS
CONTRACT	4 of 4
	PROJECT