

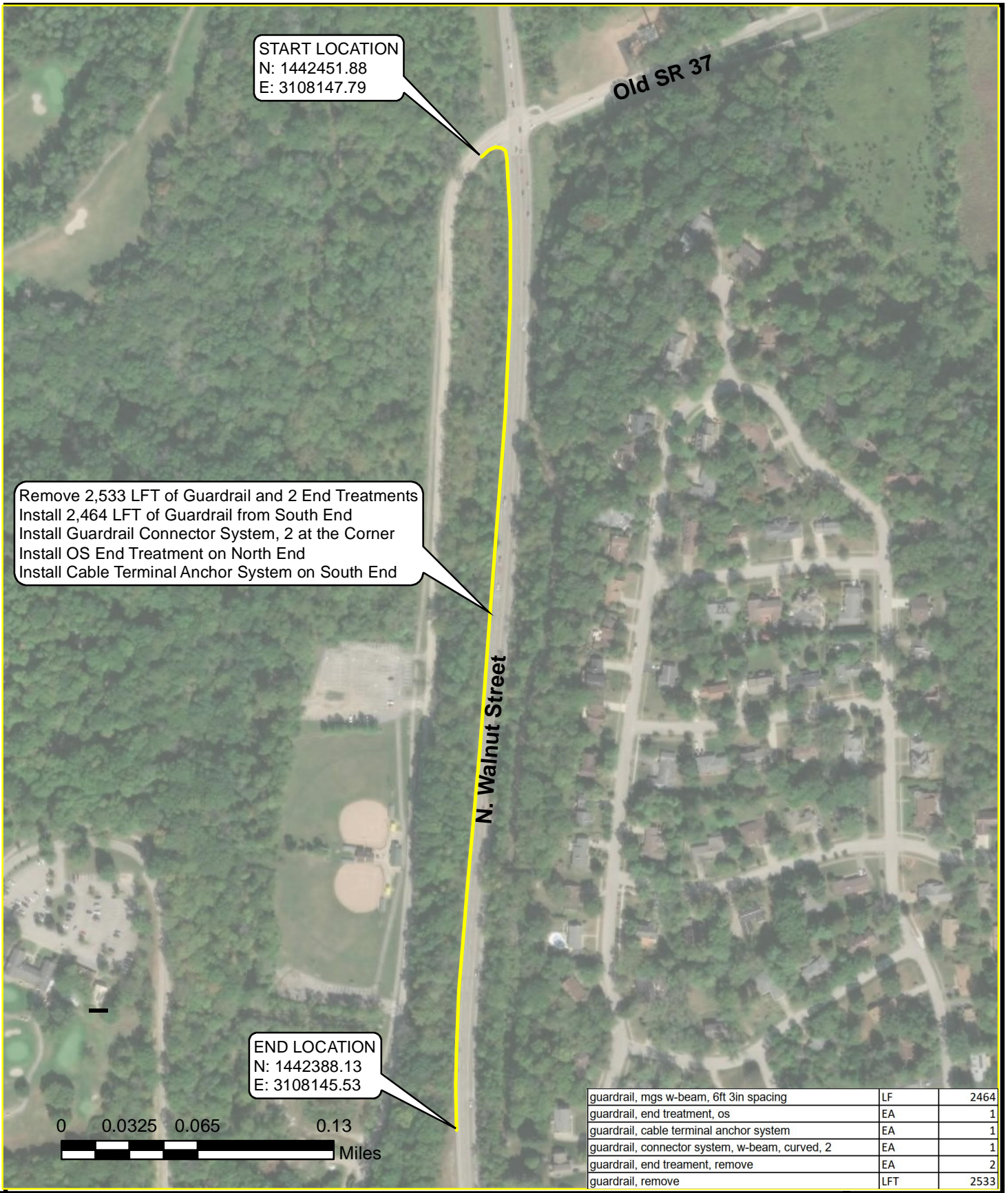
guardrail, mgs w-beam, 6ft 3in spacing	LF	35
guardrail, end treatment, os	EA	1
guardrail, terminal system, w-beam curved, 7	EA	1
guardrail, end treatment, remove	EA	2
guardrail, remove	LFT	65

**GUARDRAIL REPLACEMENT  
 LOCATION 1  
 NORTH WALNUT STREET at OLD SR 37 (NW CORNER)**

CITY OF BLOOMINGTON, INDIANA

**SA  
 STRAND  
 ASSOCIATES®**

LOCATION 1  
 JOB # 4607.001

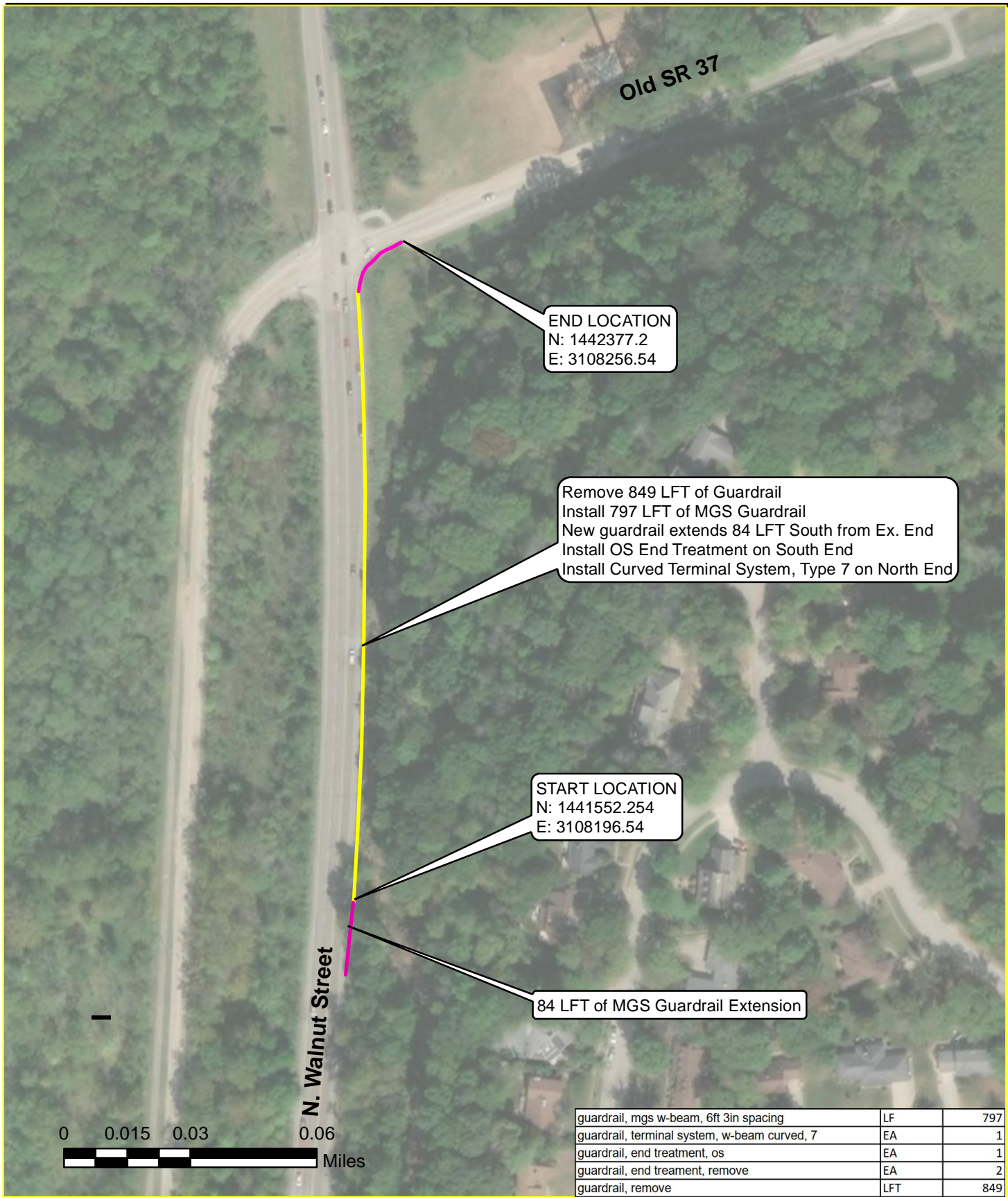


**GUARDRAIL REPLACEMENT**  
**LOCATION 2**  
**NORTH WALNUT STREET at OLD SR 37 - WEST SIDE**  
**CITY OF BLOOMINGTON, INDIANA**



**LOCATION 2**  
**JOB # 4607.001**

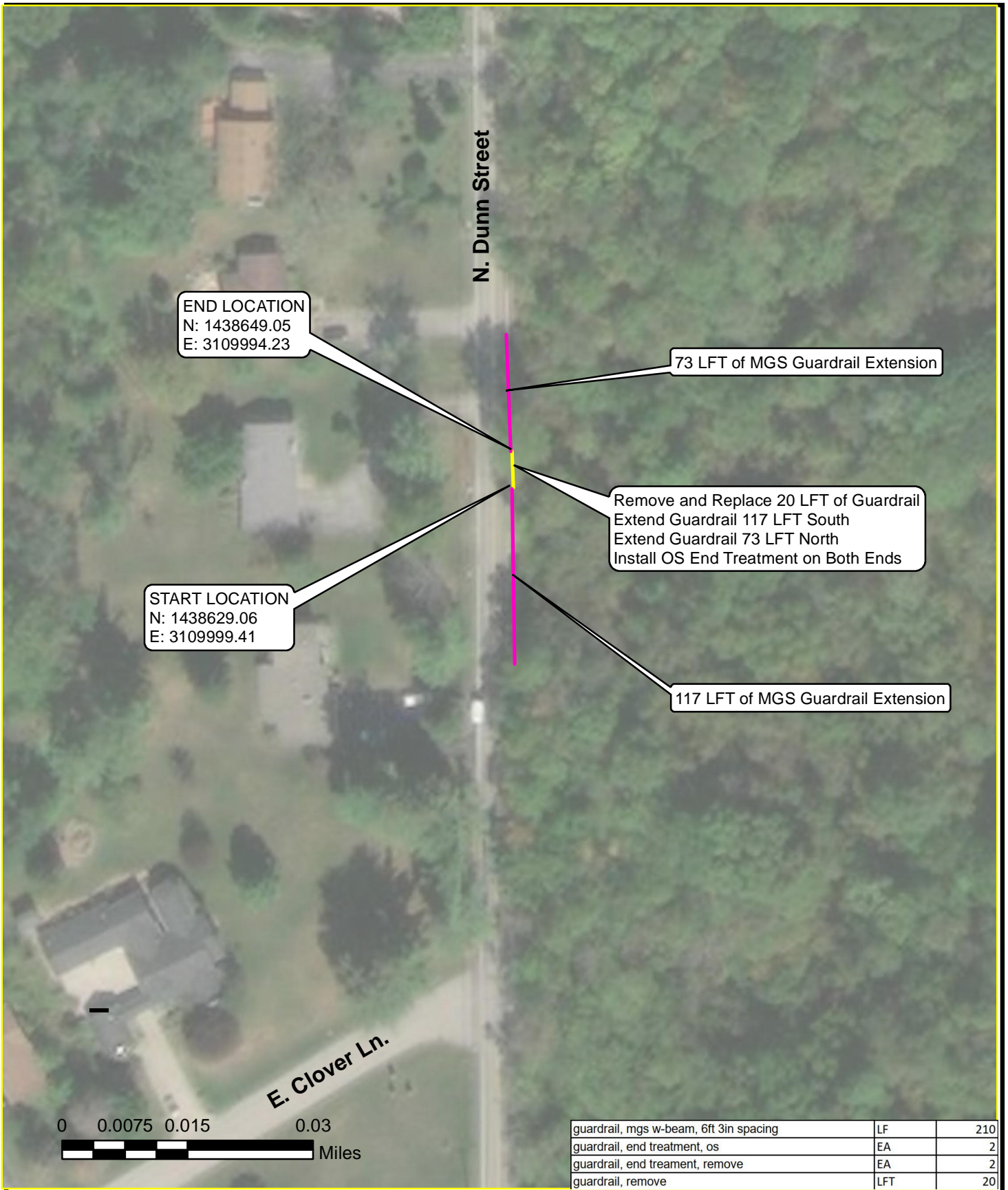




**GUARDRAIL REPLACEMENT**  
**LOCATION 3**  
**NORTH WALNUT STREET at OLD SR 37 - EAST SIDE**  
**CITY OF BLOOMINGTON, INDIANA**



**LOCATION 3**  
**JOB # 4607.001**



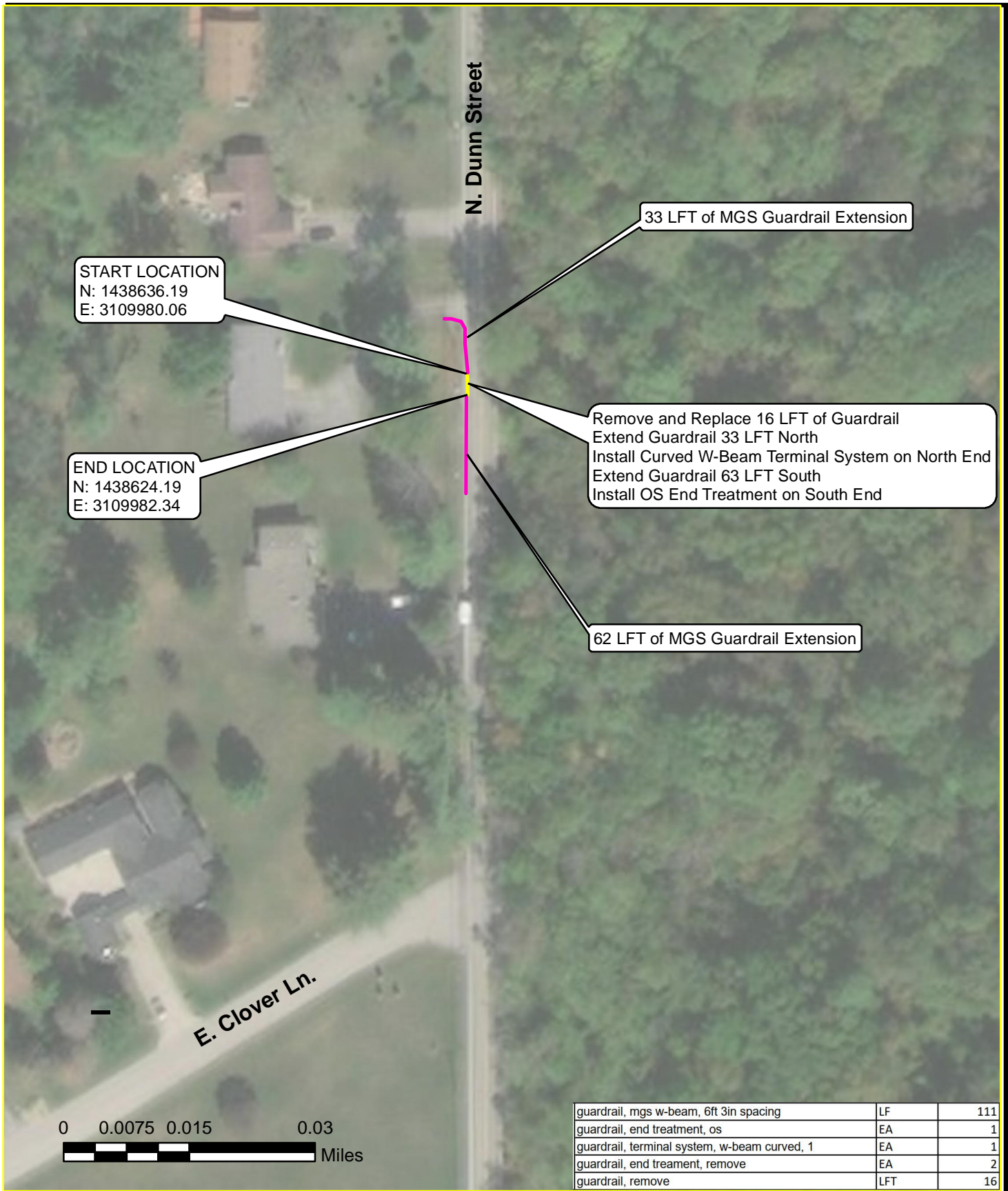
guardrail, mgs w-beam, 6ft 3in spacing	LF	210
guardrail, end treatment, os	EA	2
guardrail, end treatment, remove	EA	2
guardrail, remove	LFT	20

**GUARDRAIL REPLACEMENT  
 LOCATION 4  
 NORTH DUNN STREET - EAST SIDE  
 CITY OF BLOOMINGTON, INDIANA**



**LOCATION 4  
 JOB # 4607.001**





**GUARDRAIL REPLACEMENT  
LOCATION 5  
NORTH DUNN STREET - WEST SIDE**

CITY OF BLOOMINGTON, INDIANA



LOCATION 5  
JOB # 4607.001

**END LOCATION**  
 N: 1438922.63  
 E: 3114323.84

204 LFT of MGS Guardrail Extension

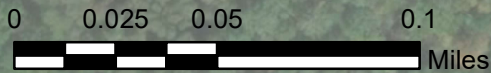
N. Hinkle Rd.

Griffey Lake

Remove and Replace 1,818 LFT of Guardrail  
 Extend Guardrail 204 LFT North  
 Install Cable Terminal Anchor on North End  
 Extend Guardrail 61 LFT South  
 Install OS End Treatment on South End

**START LOCATION**  
 N: 1437198.35  
 E: 3114628.62

61 LFT of MGS Guardrail Extension



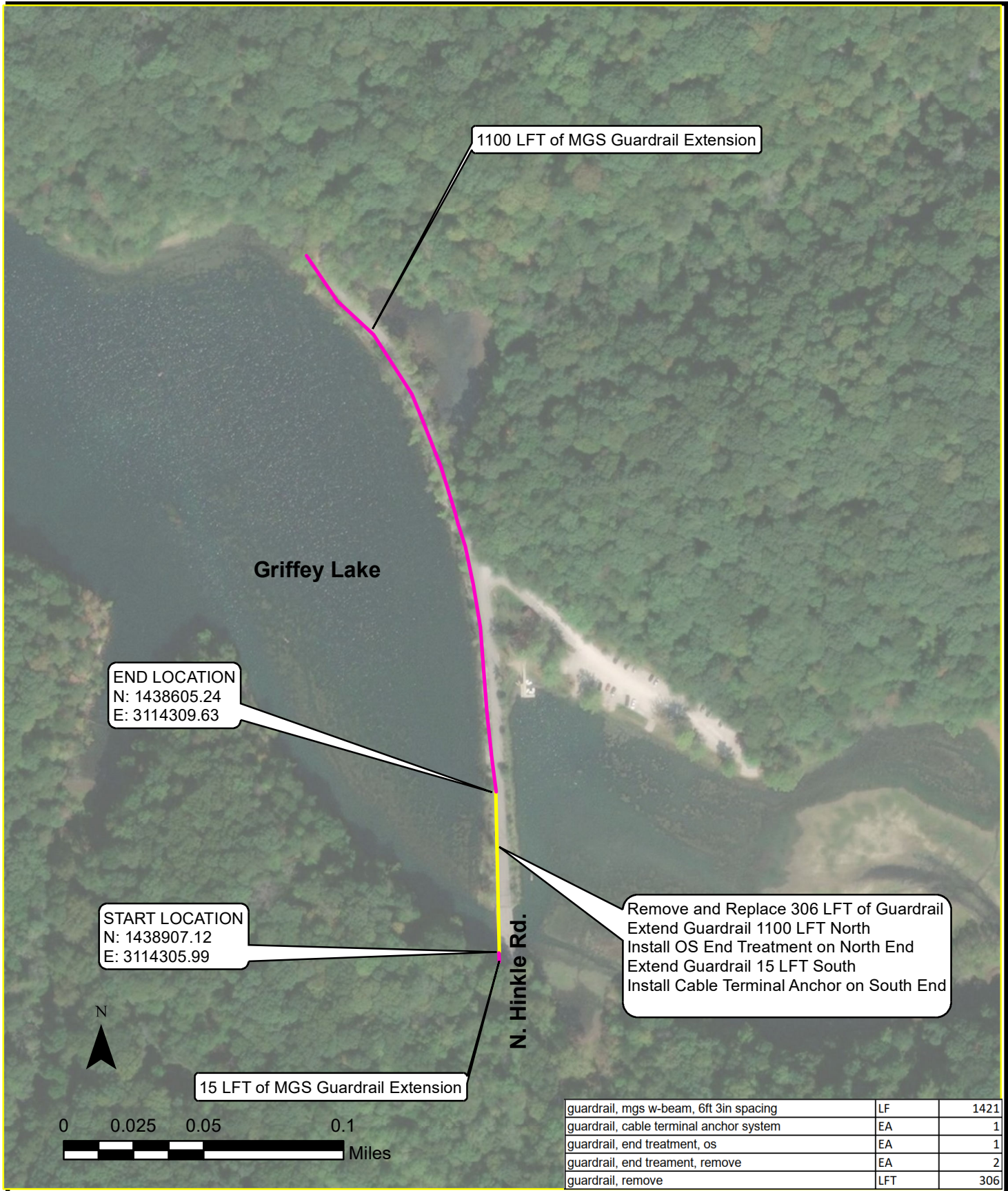
guardrail, mgs w-beam, 6ft 3in spacing	LF	2083
guardrail, cable terminal anchor system	EA	1
guardrail, end treatment, os	EA	1
guardrail, end treatment, remove	EA	2
guardrail, remove	LFT	1818

**GUARDRAIL REPLACEMENT  
 LOCATION 6  
 NORTH HINKLE DRIVE - EAST SIDE  
 CITY OF BLOOMINGTON, INDIANA**



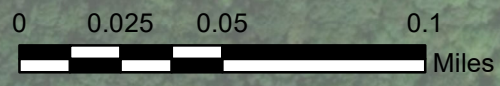
**LOCATION 6  
 JOB # 4607.001**





END LOCATION  
N: 1438605.24  
E: 3114309.63

START LOCATION  
N: 1438907.12  
E: 3114305.99

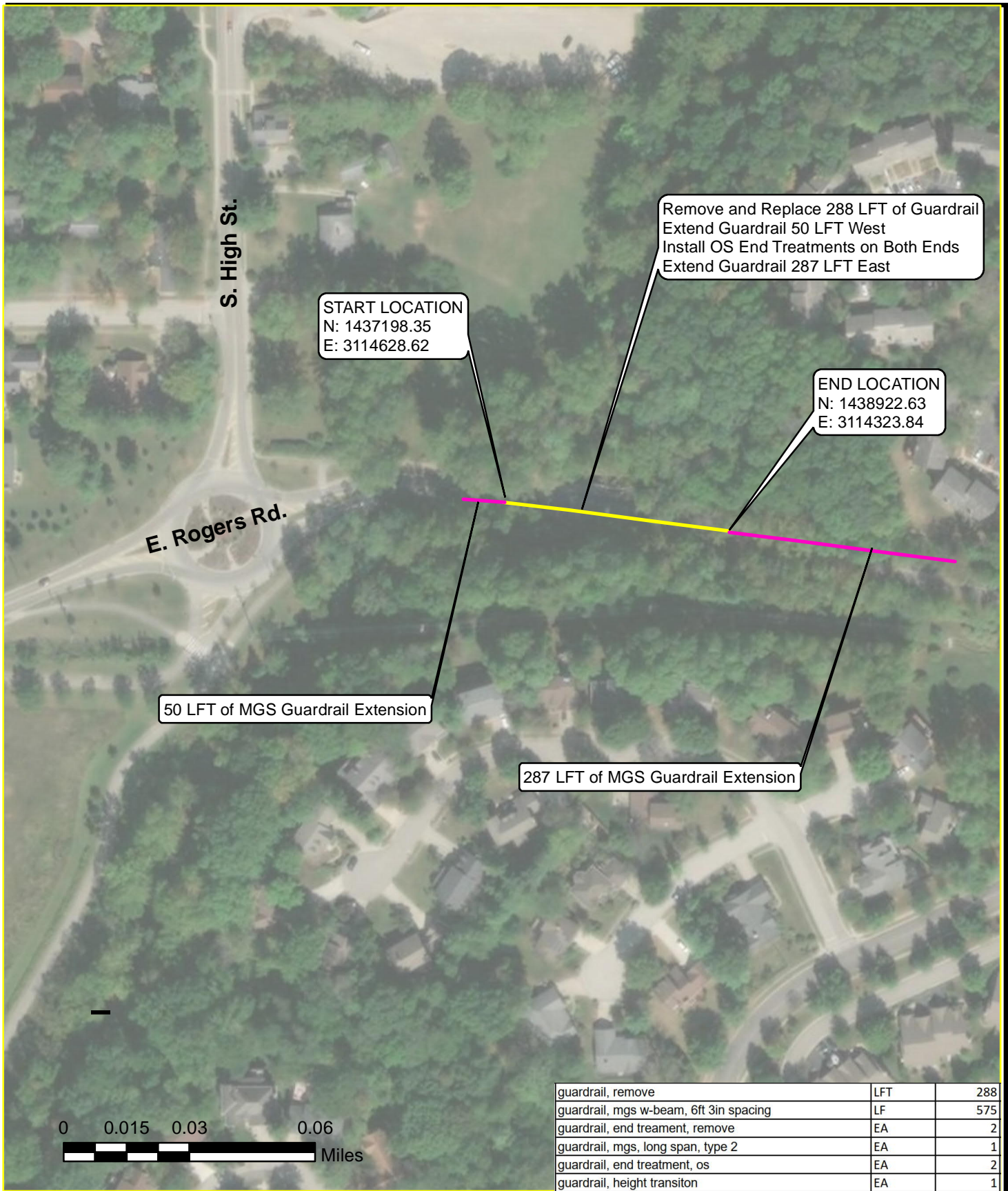


**GUARDRAIL REPLACEMENT  
LOCATION 7  
NORTH HINKLE DRIVE - WEST SIDE  
CITY OF BLOOMINGTON, INDIANA**



**LOCATION 7  
JOB # 4607.001**



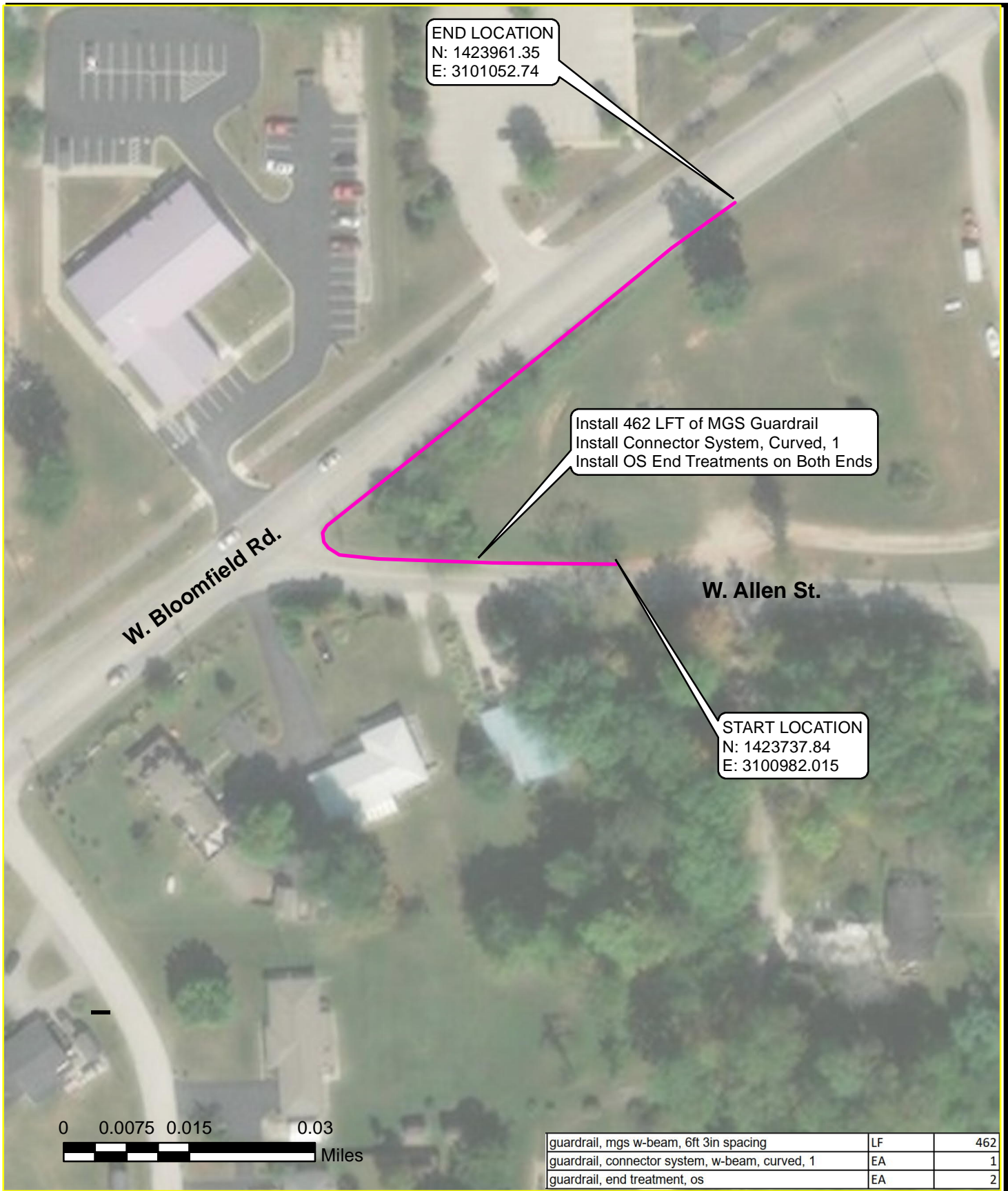


**GUARDRAIL REPLACEMENT  
LOCATION 8  
E. ROGERS RD. - SOUTH SIDE  
CITY OF BLOOMINGTON, INDIANA**



**LOCATION 8  
JOB # 4607.001**



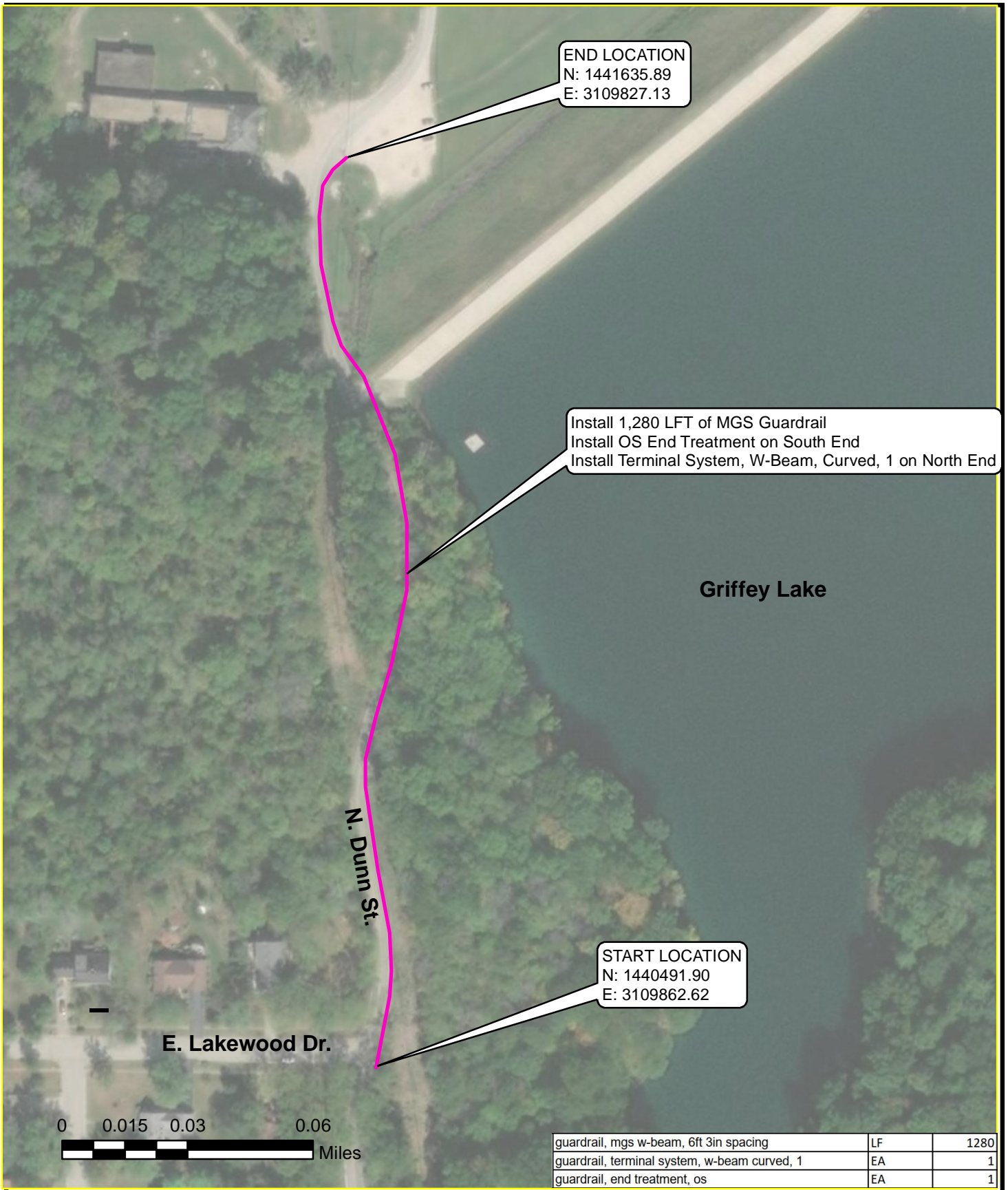


GUARDRAIL INSTALLATION  
LOCATION 9  
W. BLOOMFIELD RD. at W. ALLEN ST.

CITY OF BLOOMINGTON, INDIANA



LOCATION 9  
JOB # 4607.001

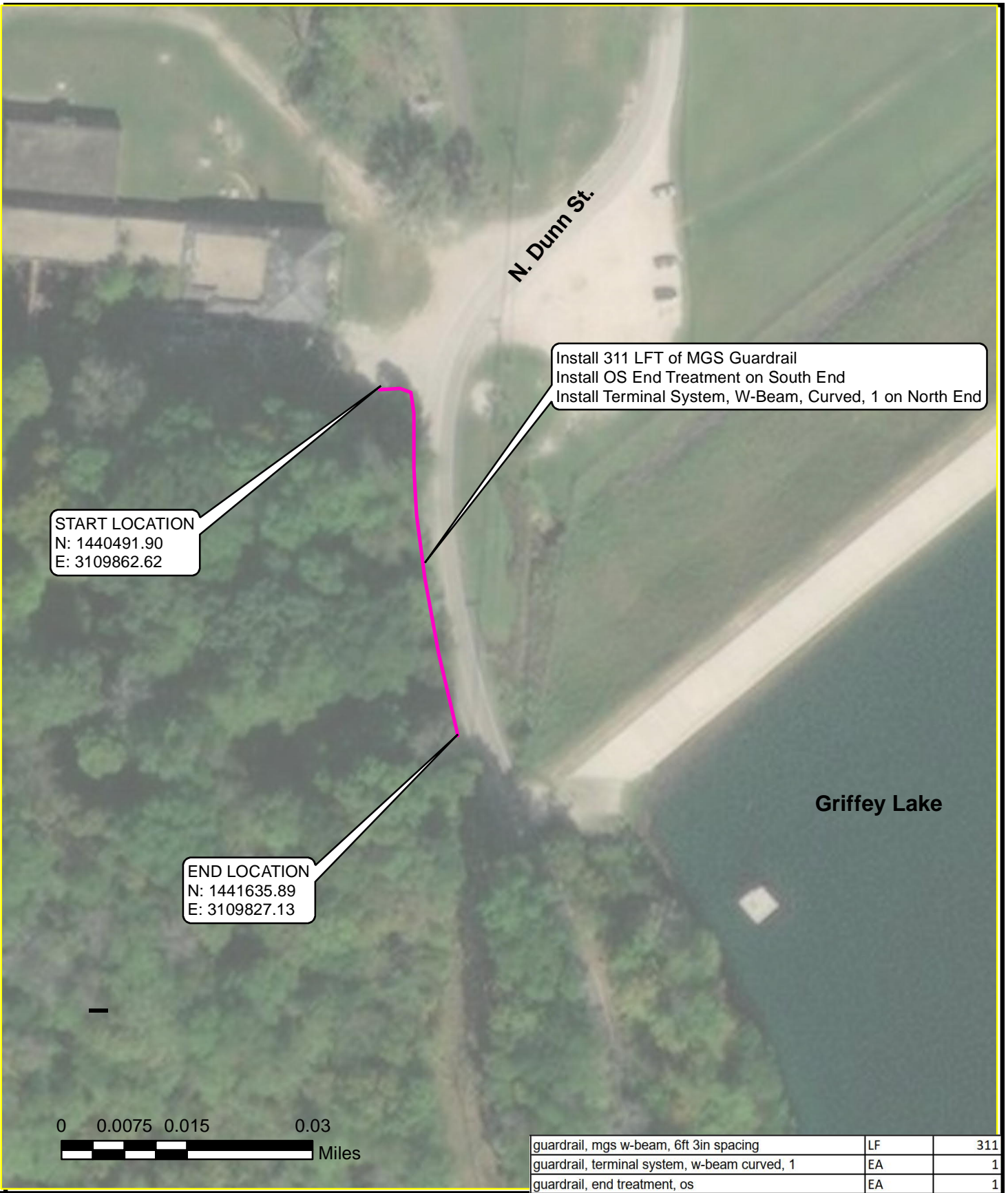


**GUARDRAIL INSTALLATION**  
**LOCATION 10**  
**N. DUNN ST. at E. LAKEWOOD DR. - EAST SIDE**  
**CITY OF BLOOMINGTON, INDIANA**



**LOCATION 10**  
**JOB # 4607.001**





**GUARDRAIL INSTALLATION**  
**LOCATION 11**  
**N. DUNN ST. at E. LAKEWOOD DR. - WEST SIDE**  
**CITY OF BLOOMINGTON, INDIANA**



**LOCATION 11**  
**JOB # 4607.001**