

Meeting at the Mill: A Conversation About a



SUSTAINABILITY
INVESTMENT FUND

Welcome!

Agenda for the Evening

- Presentations:
 - **Matt Flaherty** - City Council, At-Large
 - **Lauren Travis** - Assistant Director of Sustainability
 - **Andrea Webster** - Implementation Manager, Environmental Resilience Institute at IU
 - **Mayor John Hamilton**
- Break-Out Public Input Sessions:
 - Seven themed tables with subject-matter experts
 - Four 20-minute sessions

Why We're Here

- To listen and discuss a Sustainability Investment Fund
- Proposed by Mayor John Hamilton on January 1 and the State of the City Address (view on CATS)
- A dedicated fund to invest in a better future, a more resilient economy, and a healthier community

Why a dedicated Sustainability Investment Fund?

- Climate change will impact our local economy and community
- Our residents have told us we need to prepare
- To protect our future and our most vulnerable community members, while improving the lives of our residents today

What Is a Local Income Tax (or LIT)?

- An income tax paid by individuals at the local level
 - Monroe County's current LIT rate is 1.345%
 - A 0.5% increase would put Monroe County's LIT rate at 1.845%
- For someone making \$40,000/year, a 0.5% increase would be \$200/year or a little less than \$4/week
- LIT revenues go to cities, towns, and counties*
- 0.5% increase would generate ~\$16 million per year

* Edit: an earlier version of these slides stated that LIT revenues were allocated proportionate to population, but this is in fact only one of two possible ways in which revenues can be allocated (see IC 6-3.6-6-9)

Our Local Income Tax in Context

- Monroe County's current LIT rate is the 22nd lowest out of 92 Indiana counties
- 2019 LIT rates for mid-sized Indiana cities

City	LIT Tax Rate
Bloomington	1.345%
Carmel	1.00%
Fishers	1.00%
Lafayette	1.10%
Columbus	1.75%
Fort Wayne	1.48%
Evansville	1.20%
Kokomo	1.75%
Terre Haute	2.00%
South Bend	1.75%
Muncie	1.50%

How is a Local Income Tax Passed?

- Gather public input and identifying community needs
- Passed by Monroe County Local Income Tax Council
- Voting share divided by population
- Amount of tax and timing of a vote
- When would a LIT rate change go into effect?

Common Questions

- The need for a dedicated fund
- Transparency, process, and measuring success
- Equity and tax burden
- Why does climate change matter to Bloomington
- Representation and where LIT revenues go

More Opportunities for Input

- Wednesday, March 11 – 6:30 PM in City Council Chambers
 - Climate Action & Resilience Committee Meeting
- Sustainability Investment Fund FAQ available at www.bloomington.in.gov/sustainability
 - Includes Online Feedback Form

Break-Out Session Topics (4 x 20-minute sessions)

1. **Public Transit** – Lew May, Zac Huneck
2. **Mobility Options** – Beth Rosenbarger, Mallory Rickbeil
3. **Finance and Economic Equity** – Alex Crowley, Kevin Curran
4. **Sustainable Housing** – Amber Skoby, Doris Sims
5. **Local Food** – Dave Rollo, Rachel Beyer
6. **Green Infrastructure** – Vic Kelson, Adam Wason
7. **Planning for Climate Change** – Lauren Travis, Andrea Webster

Lauren Travis

Assistant Director of Sustainability



SUSTAINABILITY
INVESTMENT FUND



SUSTAINABLE BLOOMINGTON

What is a sustainable community?

SOCIAL EQUITY

EQUAL ACCESS FOR ALL

- Ensure self-sufficiency for all residents
- Services prioritized to meet resident's basic needs
- Equal access to high-quality public services

Outcomes: reduced poverty rates

ECONOMIC VIBRANCY

DIVERSE AND THRIVING ECONOMY

- Equitable job opportunities
- Entrepreneurial small business climate
- Sustainable development

Outcomes: reduced income inequality

ENVIRONMENTAL RESILIENCY

PROTECT NATURAL RESOURCES

- Improve stewardship of natural resources
- Reduce pollution from greenhouse gas emissions
- Optimize energy, transportation, local food, waste, water, natural and built systems

Outcomes: reduced environmental impact

Bloomington will become a sustainability leader by working as a community to **preserve our natural resources**, maintain our distinct culture, build a **diverse and thriving economy**, and ensure a healthy and **equitable standard of living**. (Sustainability Action Plan, 2018)

How can Bloomington and Monroe County ensure diverse, high-quality development, enhancement of natural resources, and self-sufficiency for all residents in the decades to come?

63% OF ALL HOUSEHOLDS IN BLOOMINGTON CAN NOT AFFORD BASIC NECESSITIES LIKE HOUSING, CHILDCARE, FOOD, HEALTHCARE, AND TRANSPORTATION (UNITED WAY, 2018 ALICE UPDATE).

BETWEEN 2012 AND 2016, 6% MORE HOUSEHOLDS WERE EXPERIENCING FINANCIAL HARDSHIP.

A SIGNIFICANT PROPORTION OF BLOOMINGTON HOUSEHOLDS CANNOT SUSTAIN A SECURE AND ECONOMICALLY VIABLE LIVELIHOOD.

SUSTAINABILITY INVESTMENTS

As Bloomington changes and grows, it is necessary to ensure that community needs are being met.



Investment in these focus areas addresses these needs and would improve economic, social, and environmental outcomes in Bloomington and Monroe County.

EFFICIENT, RESPONSIVE, FORWARD THINKING

How can local government reduce costs, increase efficiency, and modernize infrastructure while simultaneously addressing Bloomington's sustainability and climate challenges?

Andrea Webster

Implementation Manager
IU Environmental Resilience Institute

How will Bloomington be impacted
by climate change?



PREPARED FOR ENVIRONMENTAL CHANGE GRAND CHALLENGE INITIATIVE
ENVIRONMENTAL RESILIENCE INSTITUTE

Climate Impacts – Bloomington



PREPARED FOR ENVIRONMENTAL CHANGE GRAND CHALLENGE INITIATIVE
ENVIRONMENTAL RESILIENCE INSTITUTE

Climate Impacts – Bloomington

Hoosier Resilience Index
hri.eri.iu.edu

High Temperatures

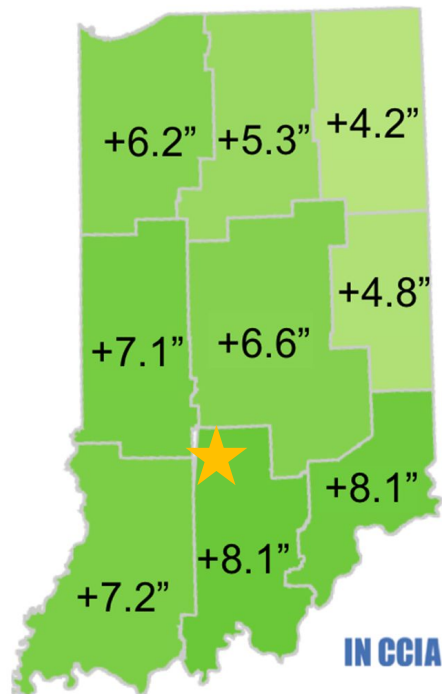
	Current Average	2050s Projected Average
More days per year above 90°F	26	74 - 87
More nights per year above 68°F	25	57 - 69



PREPARED FOR ENVIRONMENTAL CHANGE GRAND CHALLENGE INITIATIVE
ENVIRONMENTAL RESILIENCE INSTITUTE

Climate Impacts – Bloomington

Hoosier Resilience Index
hri.eri.iu.edu



More Rain and Snow

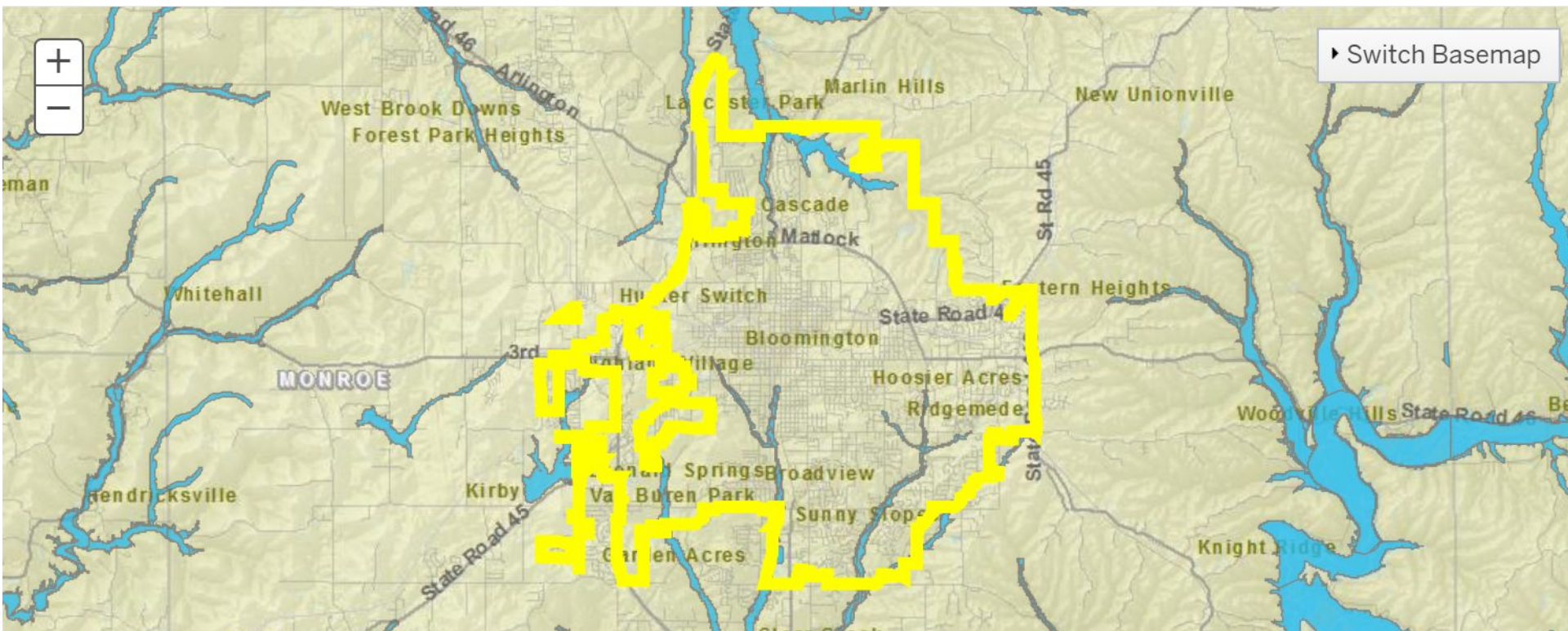
	Current Average	2050s Projected Average
More heavy precipitation events per decade	19	22 - 23

Monroe County: an average of 8.1 inches more of rain and snow over the course of a year

Change in annual average precipitation
based on linear trend between 1895 to 2019

Climate Impacts – Bloomington

Hoosier Resilience Index
hri.eri.iu.edu



Climate Impacts – Bloomington

Hoosier Resilience Index
hri.eri.iu.edu

Bloomington has 634 acres in the floodplain

- Developed: 465 acres
- Wetlands: 112 acres
- Agriculture: 57 acres

(based on 2010 land use data)

What is a floodplain?

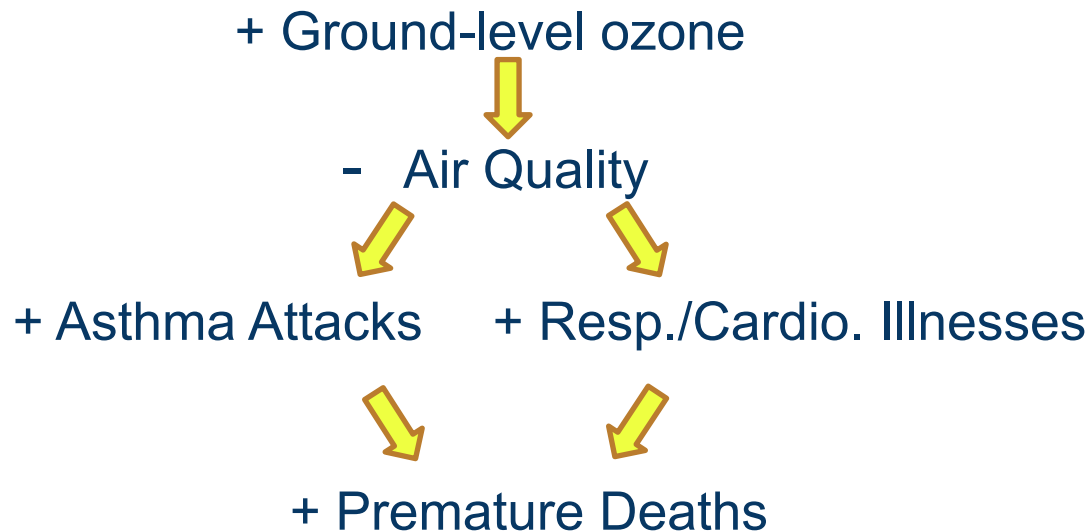
The area next to rivers and streams that is likely to flood



PREPARED FOR ENVIRONMENTAL CHANGE GRAND CHALLENGE INITIATIVE
ENVIRONMENTAL RESILIENCE INSTITUTE

Climate Impacts – Bloomington Residents & Businesses

Extreme Heat



PREPARED FOR ENVIRONMENTAL CHANGE GRAND CHALLENGE INITIATIVE
ENVIRONMENTAL RESILIENCE INSTITUTE

Climate Impacts – Bloomington Residents & Businesses

Extreme Heat Nights

+ Emergency Room Visits



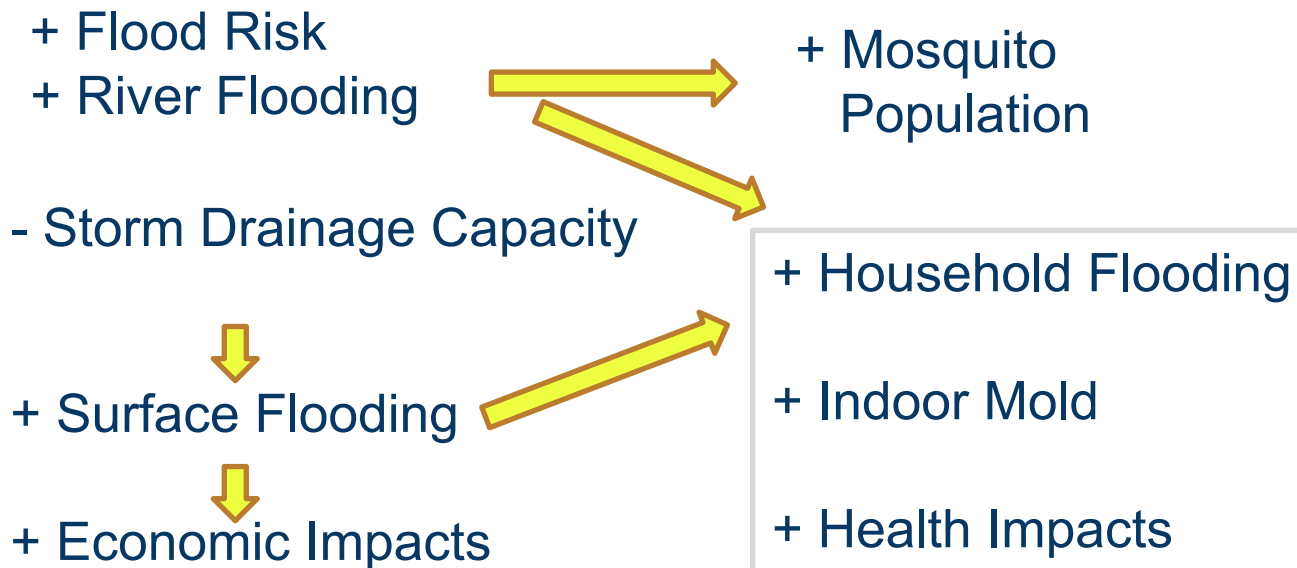
+ Premature Deaths



PREPARED FOR ENVIRONMENTAL CHANGE GRAND CHALLENGE INITIATIVE
ENVIRONMENTAL RESILIENCE INSTITUTE

Climate Impacts – Bloomington Residents & Businesses

Increasing Precipitation



PREPARED FOR ENVIRONMENTAL CHANGE GRAND CHALLENGE INITIATIVE
ENVIRONMENTAL RESILIENCE INSTITUTE

Adaptation Actions – Extreme Heat

- Develop an extreme heat management plan
 - Advanced warning program
 - Educate about heat related illnesses
 - Reduce heat impacts in the built environment (vegetation, cool roofs, parking lot shading)



PREPARED FOR ENVIRONMENTAL CHANGE GRAND CHALLENGE INITIATIVE
ENVIRONMENTAL RESILIENCE INSTITUTE

Adaptation Actions - Flooding

- Prepare culverts and ditches for flooding
- Add lots and lots of plants
- Ensure critical infrastructure is not vulnerable to flooding
- Develop a debris management plan to direct post-flood response
- Ensure storm sewer system capacity is appropriate for heavy precipitation events



PREPARED FOR ENVIRONMENTAL CHANGE GRAND CHALLENGE INITIATIVE
ENVIRONMENTAL RESILIENCE INSTITUTE

Remarks from Mayor John Hamilton



Break-Out Session Topics (4 x 20-minute sessions)

1. **Public Transit** – Lew May, Zac Huneck
2. **Mobility Options** – Beth Rosenbarger, Mallory Rickbeil
3. **Finance and Economic Equity** – Alex Crowley, Kevin Curran
4. **Sustainable Housing** – Amber Skoby, Doris Sims
5. **Local Food** – Dave Rollo, Rachel Beyer
6. **Green Infrastructure** – Vic Kelson, Adam Wason
7. **Planning for Climate Change** – Lauren Travis, Andrea Webster