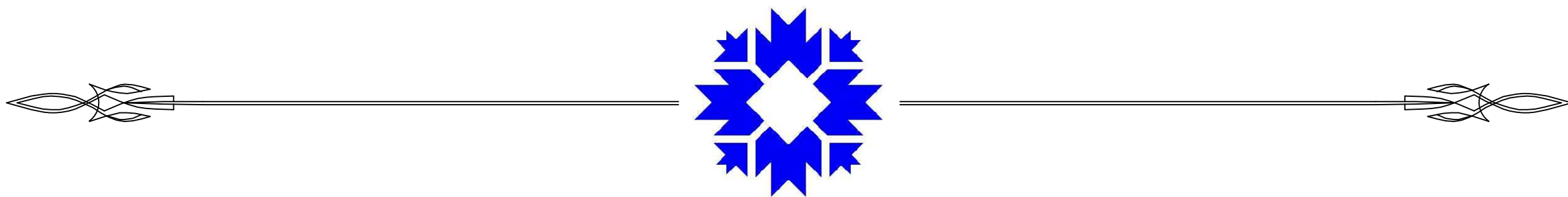


CITY OF BLOOMINGTON  
PLANNING AND TRANSPORTATION DEPARTMENT

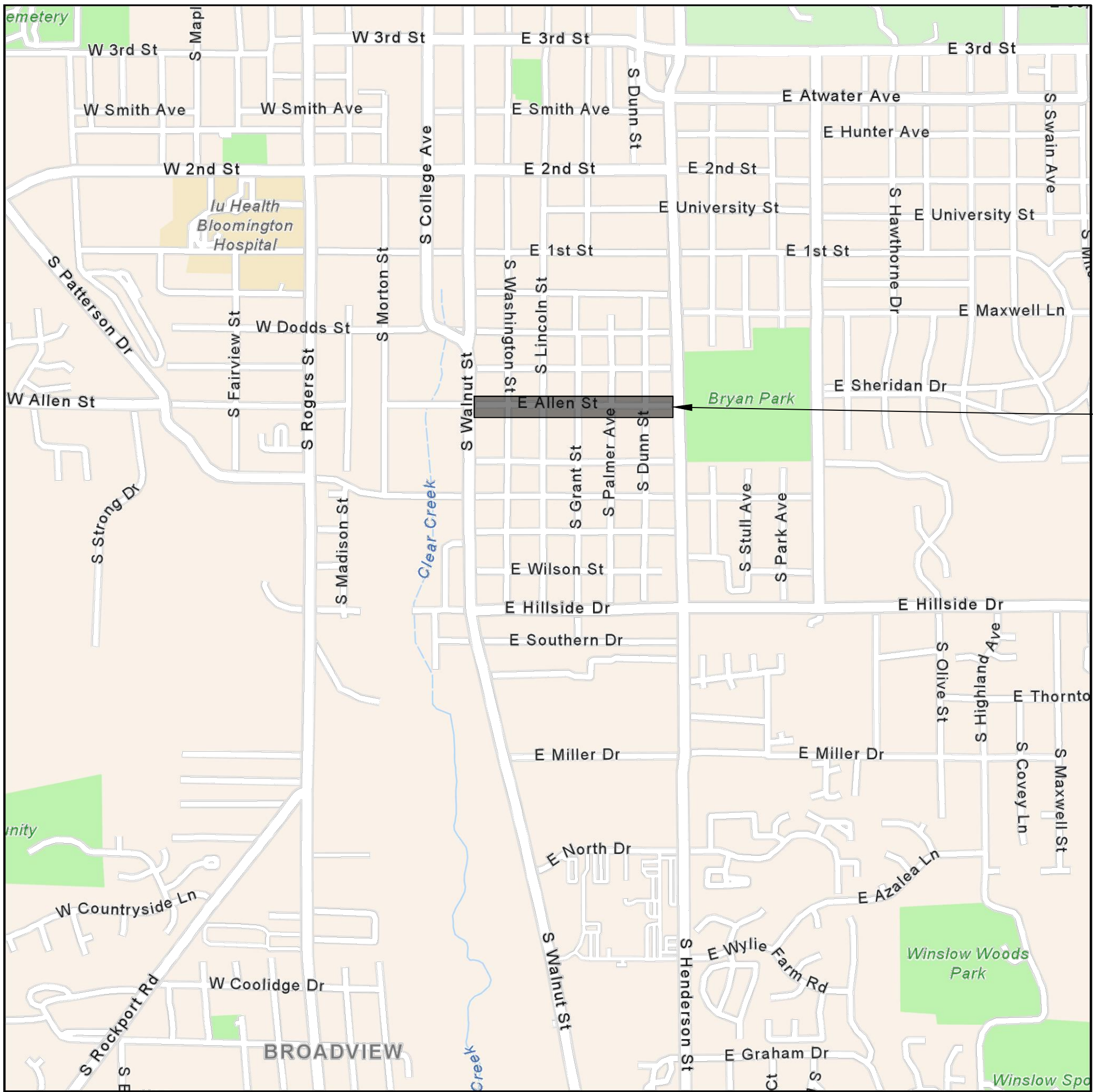


EAST ALLEN STREET  
TRAFFIC CALMING

ROUTE: EAST ALLEN STREET FROM SOUTH WALNUT STREET TO SOUTH HENDERSON STREET

SECTION 04, T-8-N, R-1-W, PERRY TOWNSHIP, MONROE COUNTY, INDIANA

REMOVE TEMPORARY TRAFFIC CALMING, INSTALL TRAFFIC CUSHION, INSTALL FOUR BUMP-OUTS.

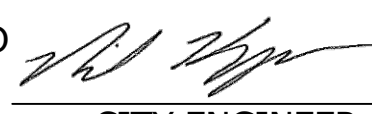


PROJECT LOCATION

CITY OF BLOOMINGTON  
MONROE COUNTY  
INDIANA

INDIANA DEPARTMENT OF TRANSPORTATION  
STANDARD SPECIFICATIONS DATED 2020  
AND CURRENT SUPPLEMENTS THERETO, TO  
BE USED WITH THESE PLANS



RECOMMENDED FOR APPROVAL		10/22/2020
CITY ENGINEER		DATE
DESIGNED:	DRAWN: REA	
CHECKED:	CHECKED:	

CITY OF BLOOMINGTON  
ENGINEERING DEPARTMENT

EAST ALLEN STREET  
TRAFFIC CALMING

HORIZONTAL SCALE	BRIDGE FILE
VERTICLE SCALE	DESIGNATION
SURVEY BOOK	SHEETS
CONTRACT	1 of 6 PROJECT

UTILITIES


**City of Bloomington  
Parking Enforcement**  
401 N Morton Street  
Suite #120  
Raye Ann Cox  
812-349-3436

**City of Bloomington  
Street Department**  
1981 South Henderson St  
Joe Vandeventer  
812-349-3448

**Water and Sewer**  
City of Bloomington  
Utility Department  
600 E Miller Drive  
Bloomington, IN 47401  
Jane Fleig  
812-339-1444

**Gas**  
Vectren  
205 S Madison St  
Bloomington, IN 47404  
812-330-4009

**Electricity**  
Duke Energy  
1100 West 2nd Street  
Bloomington, IN 47403  
Kerry Ducker  
812-337-3035

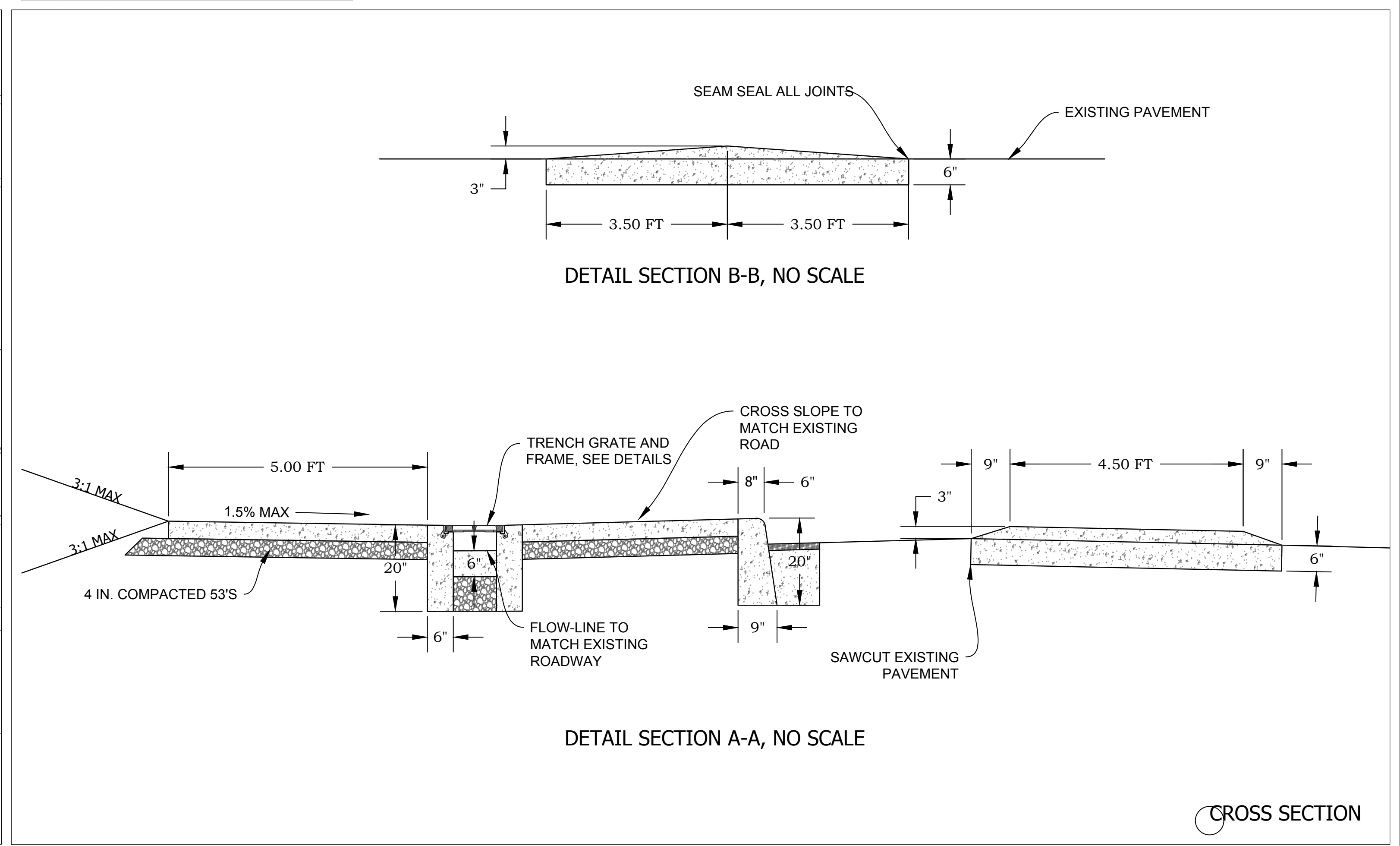
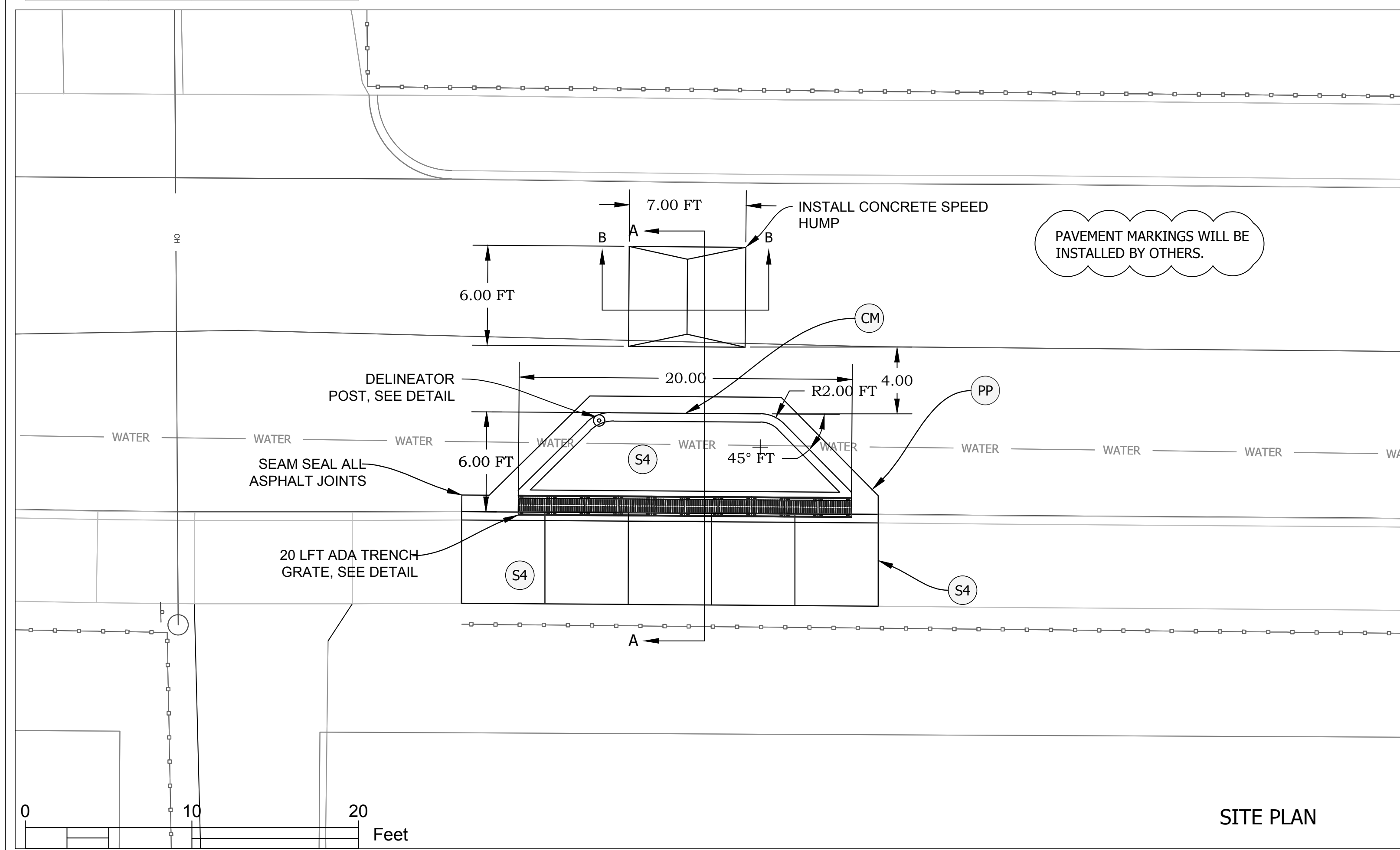
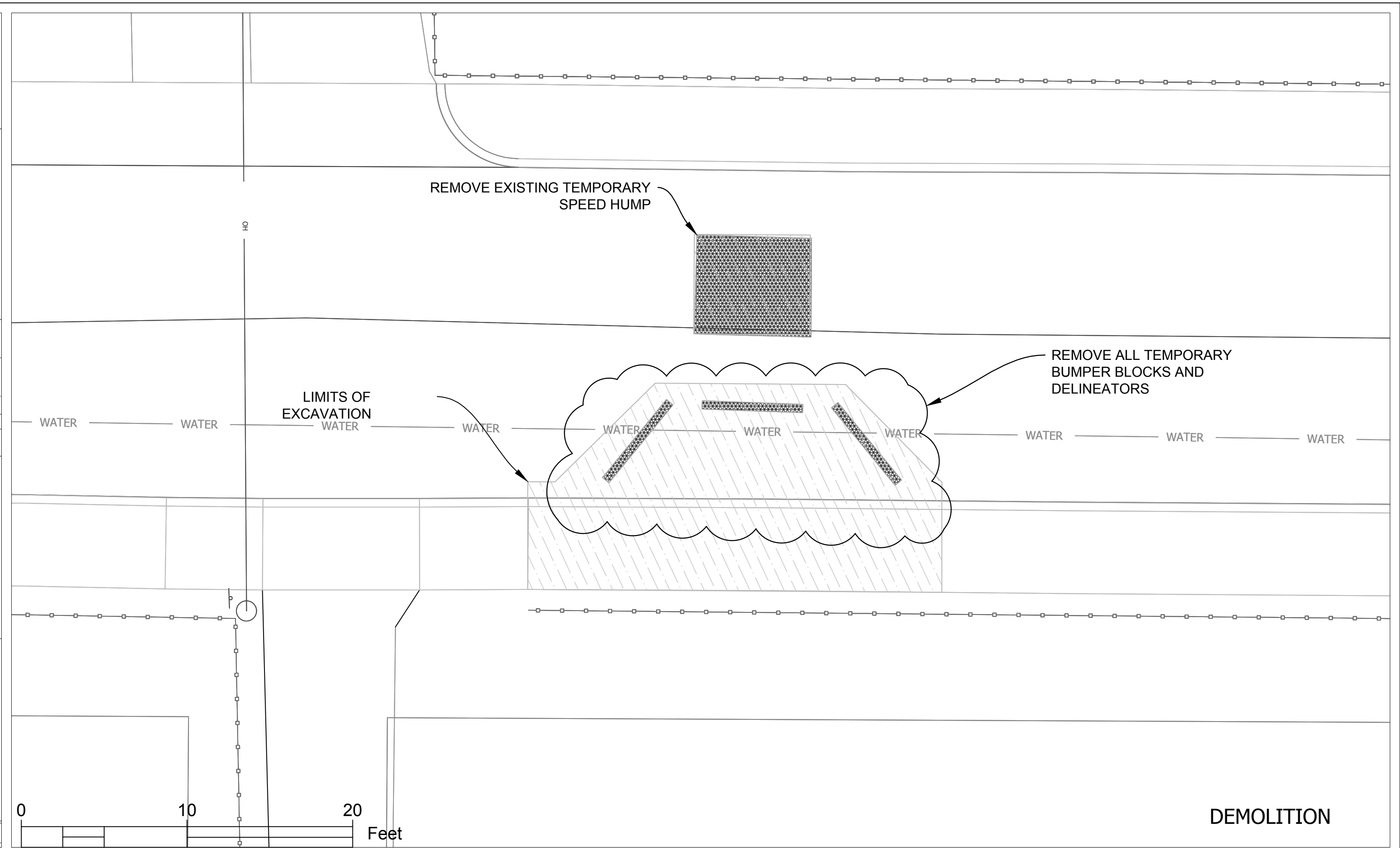
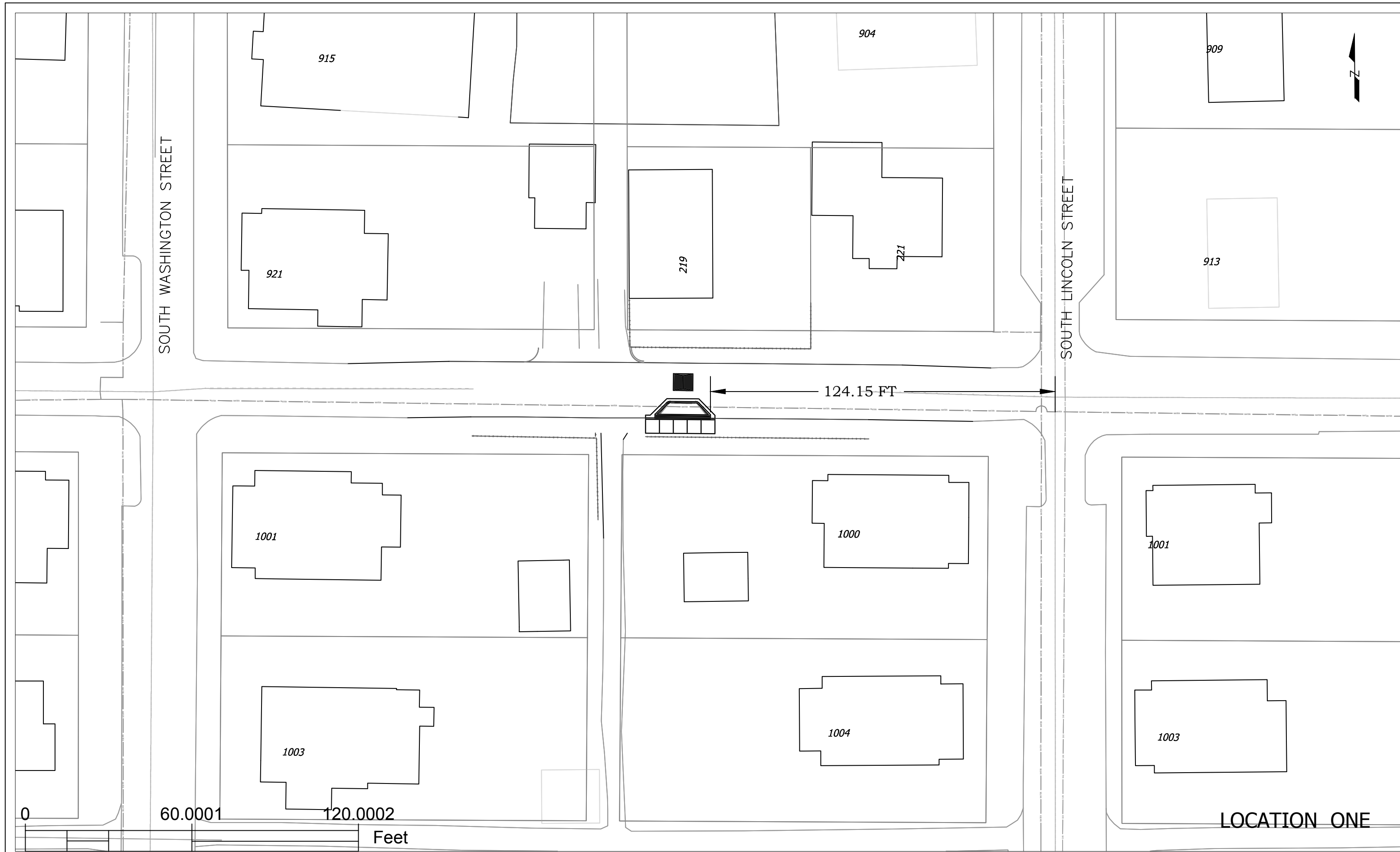


GENERAL NOTES	
**	Existing utilities: Existing buried utilities shown in the plan are shown in accordance with the available records and field information available to the engineer. Other utilities may also be present. It is anticipated that numerous buried utility lines are likely to be encountered during construction. The contractor shall be responsible for field locating and coordinating with the owners of the existing utilities to determine the location of their buried facilities. The contractor shall contact City Engineering of any conflicts between existing utilities and proposed work.
**	Maintenance of traffic (vehicular and pedestrian): Continuous maintenance of access to business and residences shall be provided along with protection of the public from construction activities at all times. Temporary traffic control shall be provided by the contractor and in accordance with the latest addition of the Indiana MUTCD. Contractor shall be responsible for keeping the project site in a neat and safe condition at all times.
	Pavement markings for this contract will be done by others.

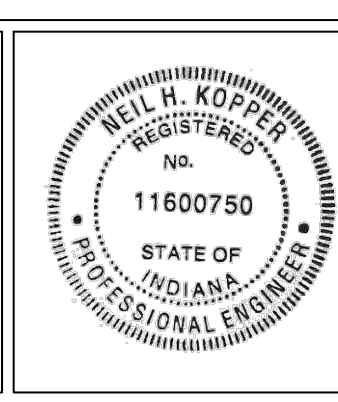
INDEX TO SHEETS	
SHEET NO.	DRAWING INDEX
1	TITLE SHEET
2	INDEX AND GENERAL NOTES
3	SITE PLAN, SITE ONE
4	SITE PLAN, SITE TWO
5	SITE PLAN, SITE THREE
6	DETAILS

REVISIONS		
SHEET NO.	DATE	REVISED





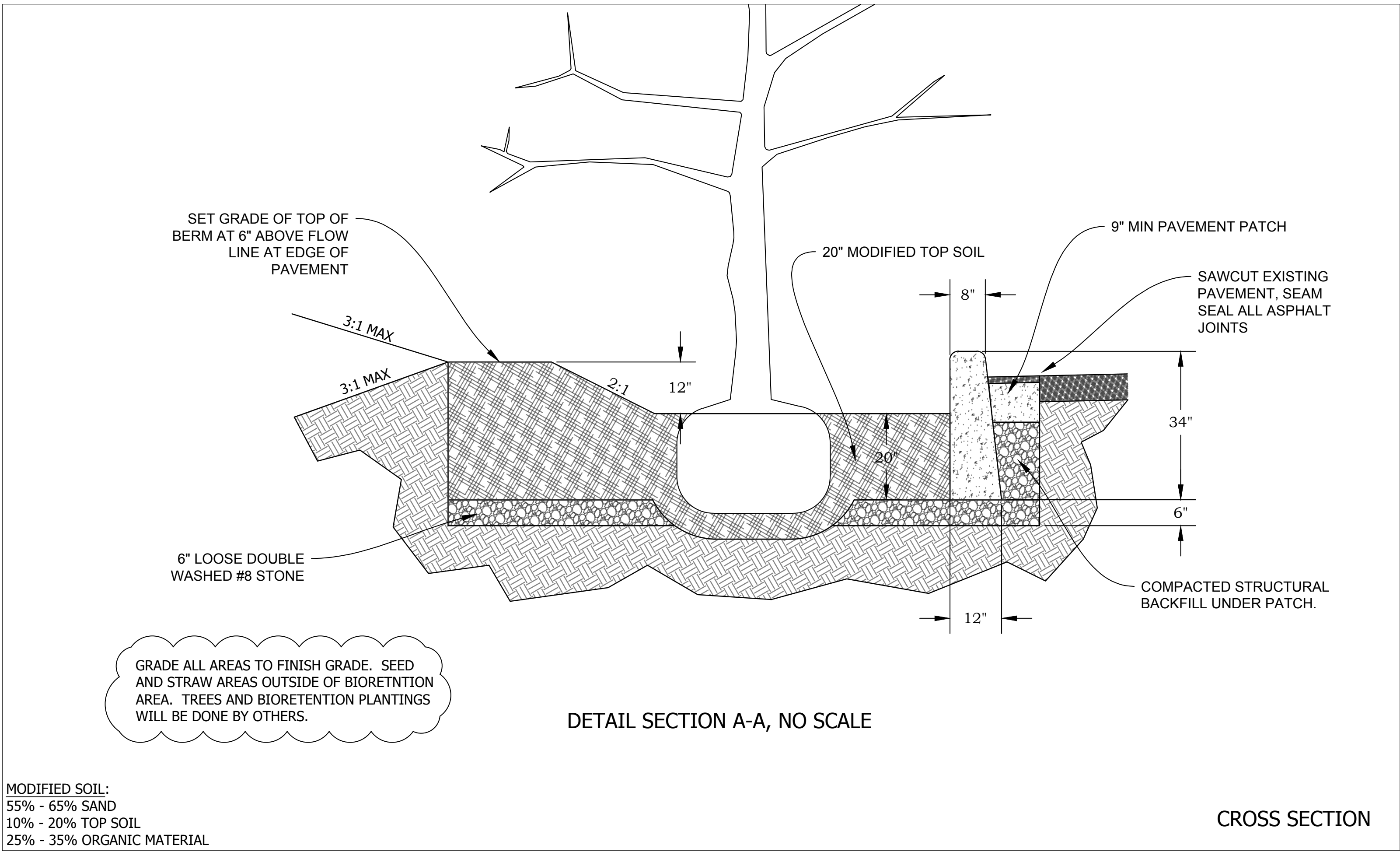
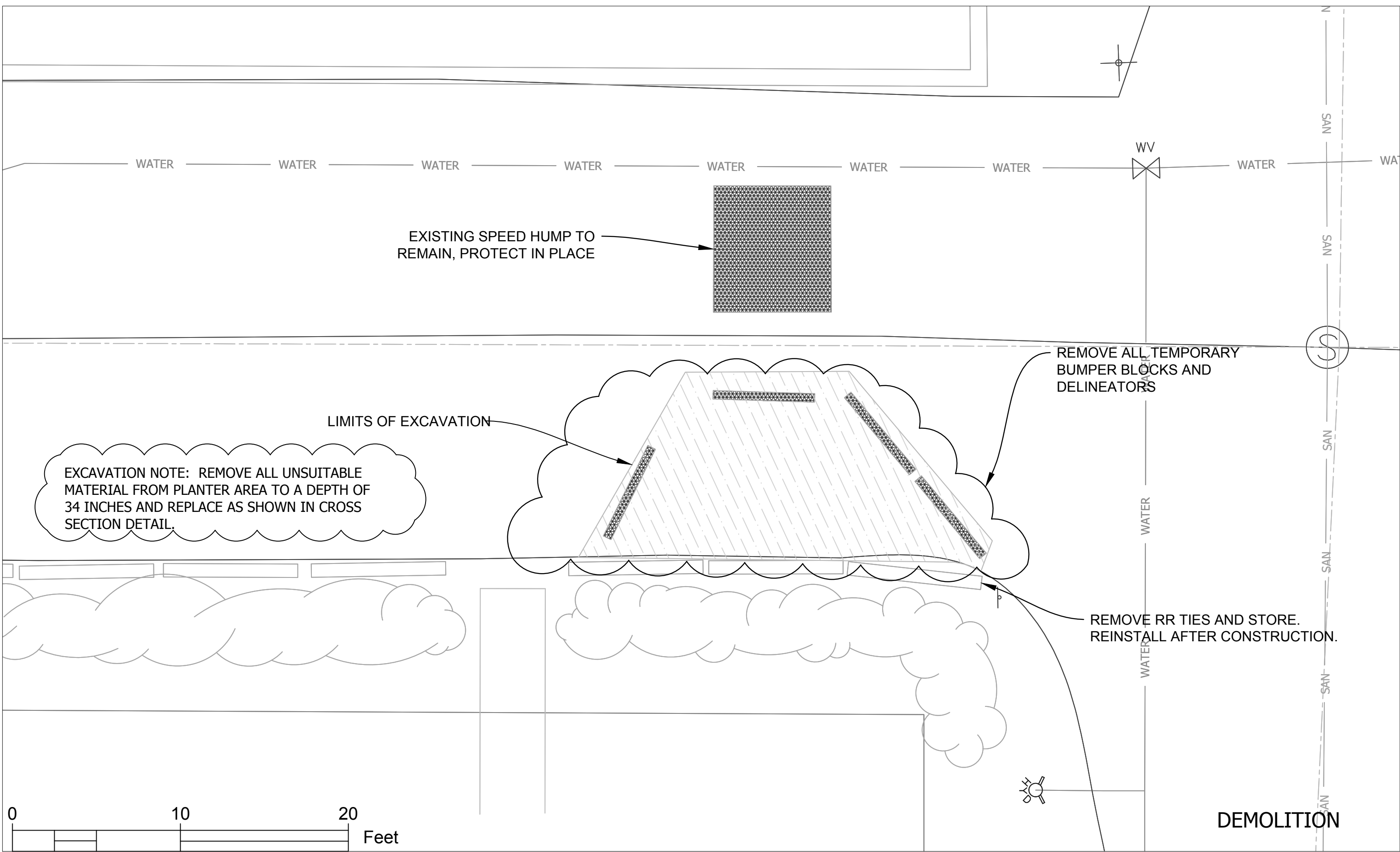
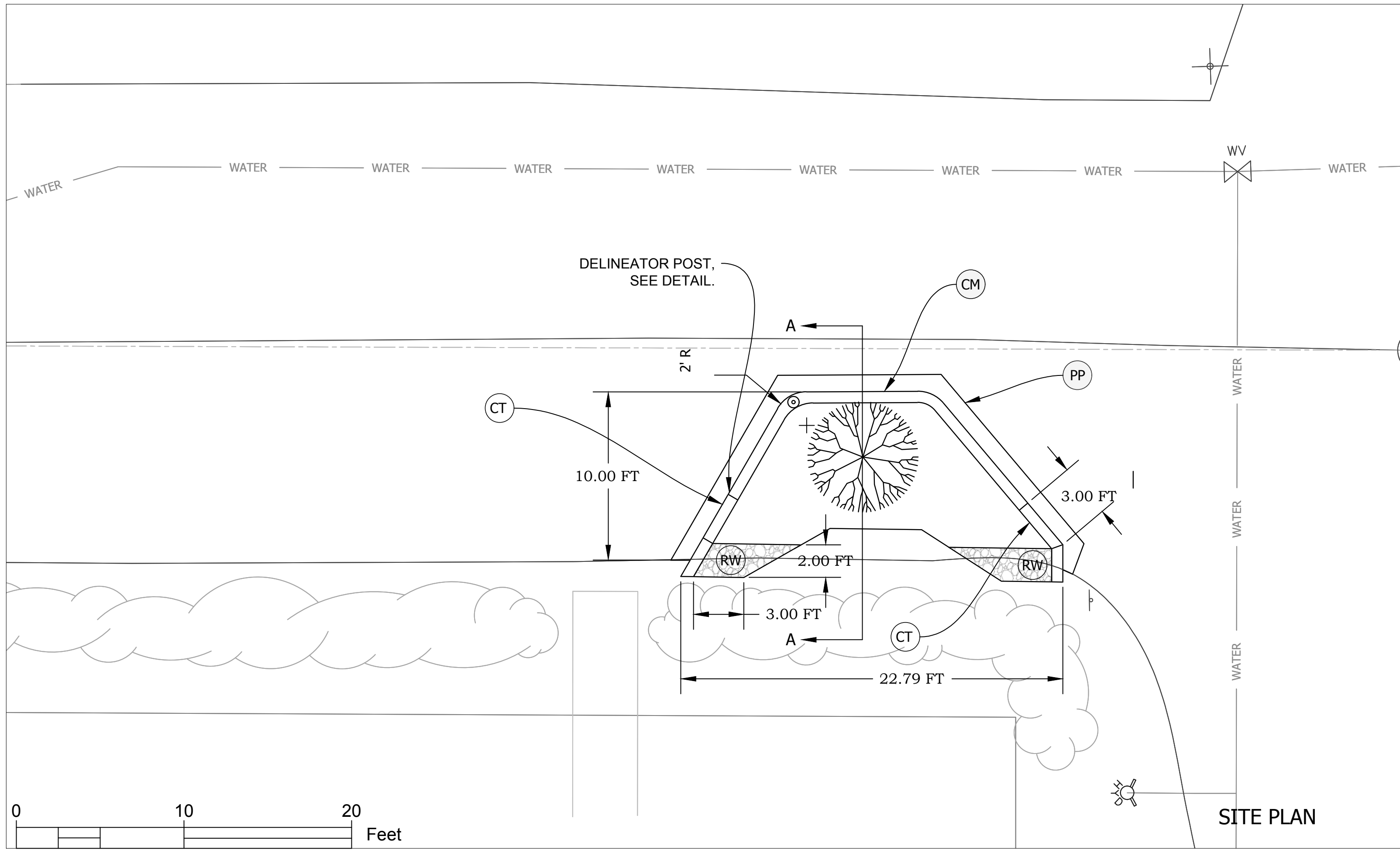
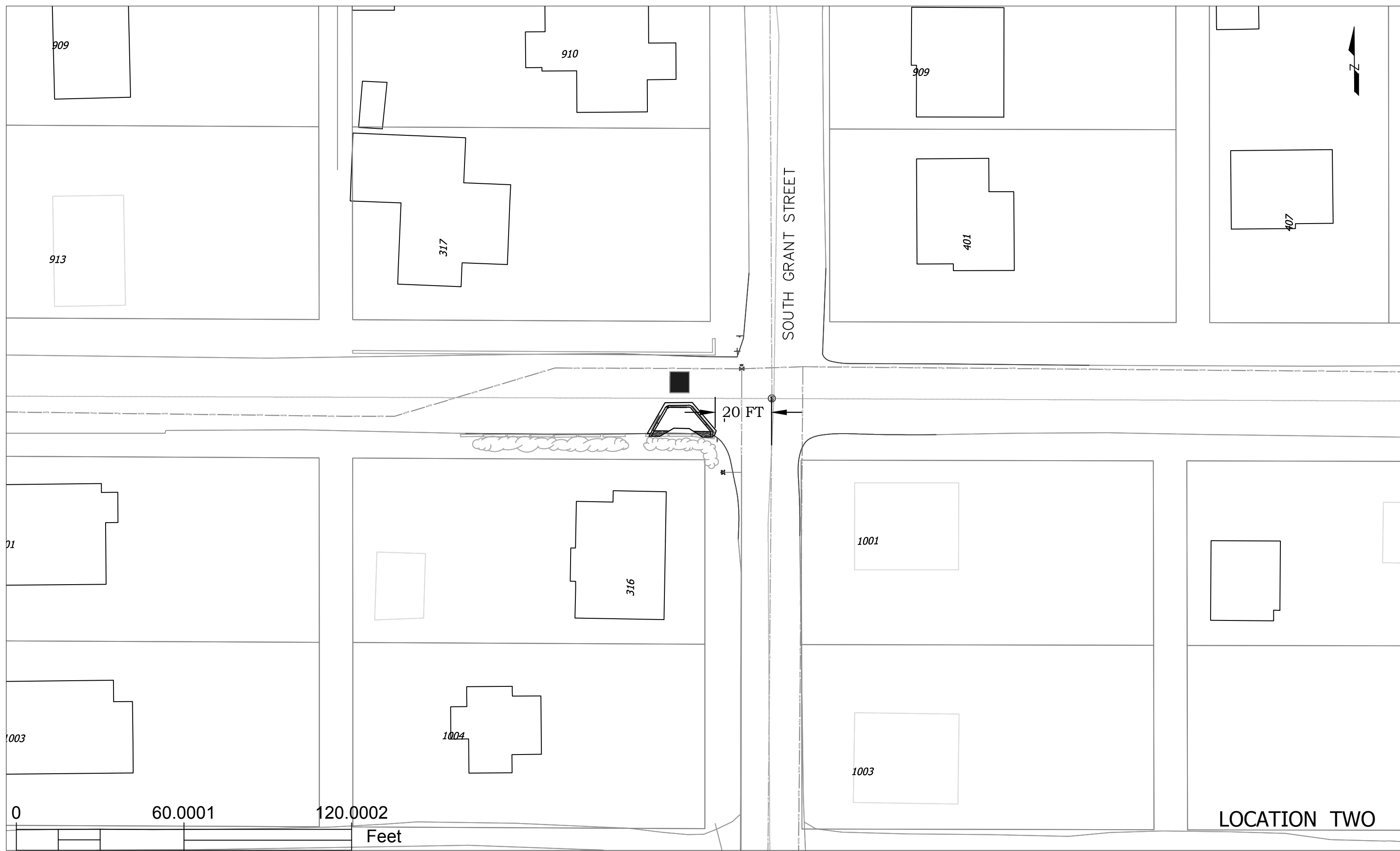
<div>CT</div> 3' Curb Taper, Concrete, Modified	<div>S4</div> Sidewalk, 4" Concrete on 4" Compacted Aggregate #53's
<div>RW</div> 6" Riprap, Uniform type 'B' on Geotextile Type 1A	<div>CM</div> Standing Curb, Concrete, Modified
	<div>PP</div> Pavement Patch, 1 1/2" HMA Surface on 9" PCCP



RECOMMENDED FOR APPROVAL	<div>10/22/2020</div>
CITY ENGINEER	DATE
DESIGNED:	DRAWN: REA
CHECKED:	CHECKED:

CITY OF BLOOMINGTON ENGINEERING DEPARTMENT
EAST ALLEN STREET TRAFFIC CALMING

HORIZONTAL SCALE 1" = 10'	BRIDGE FILE
VERTICLE SCALE	DESIGNATION
SURVEY BOOK	SHEETS
CONTRACT	3 of 6 PROJECT



(CT) 3' Curb Taper, Concrete, Modified  
(RW) 6" Riprap, Uniform type 'B' on Geotextile Type 1A

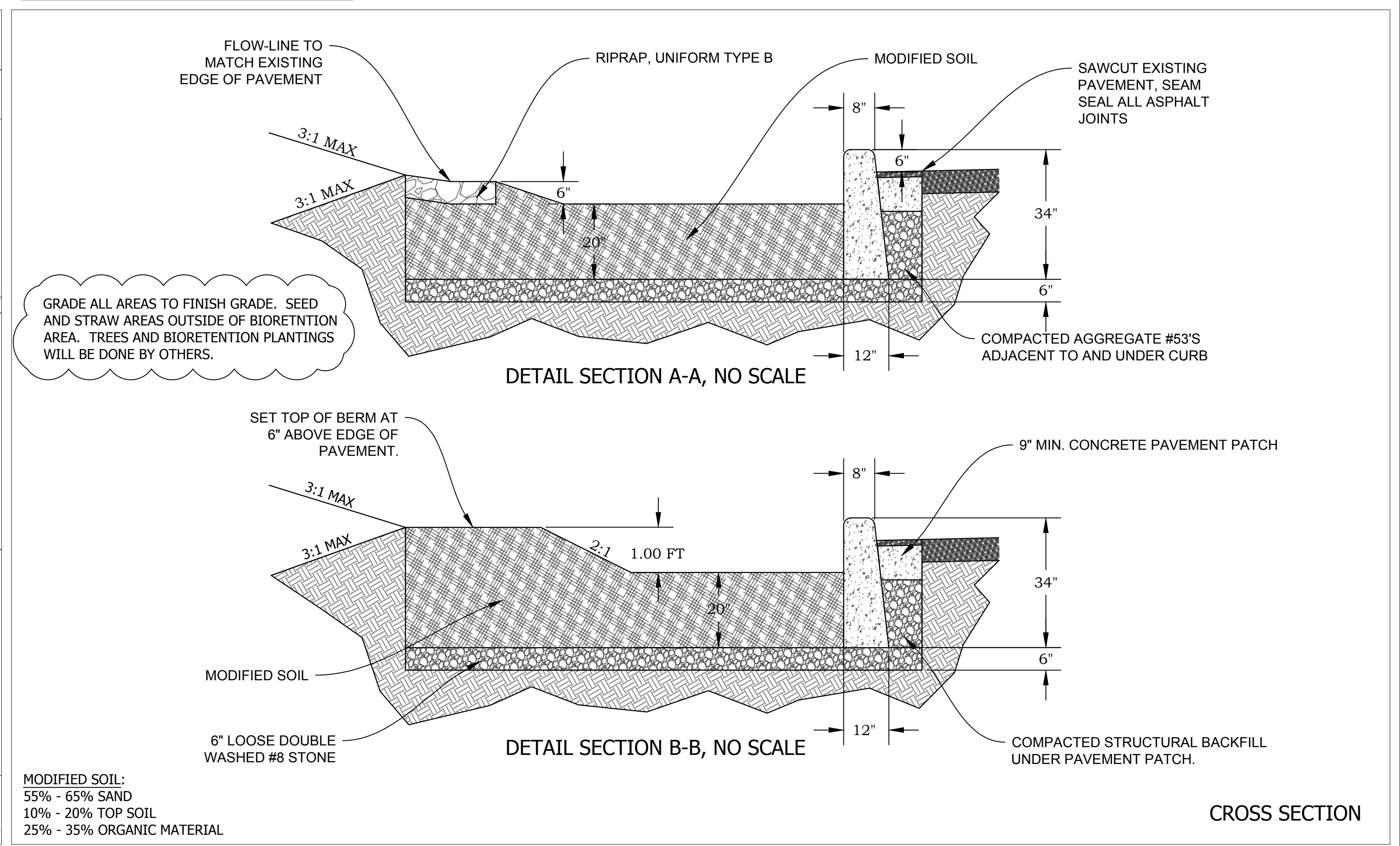
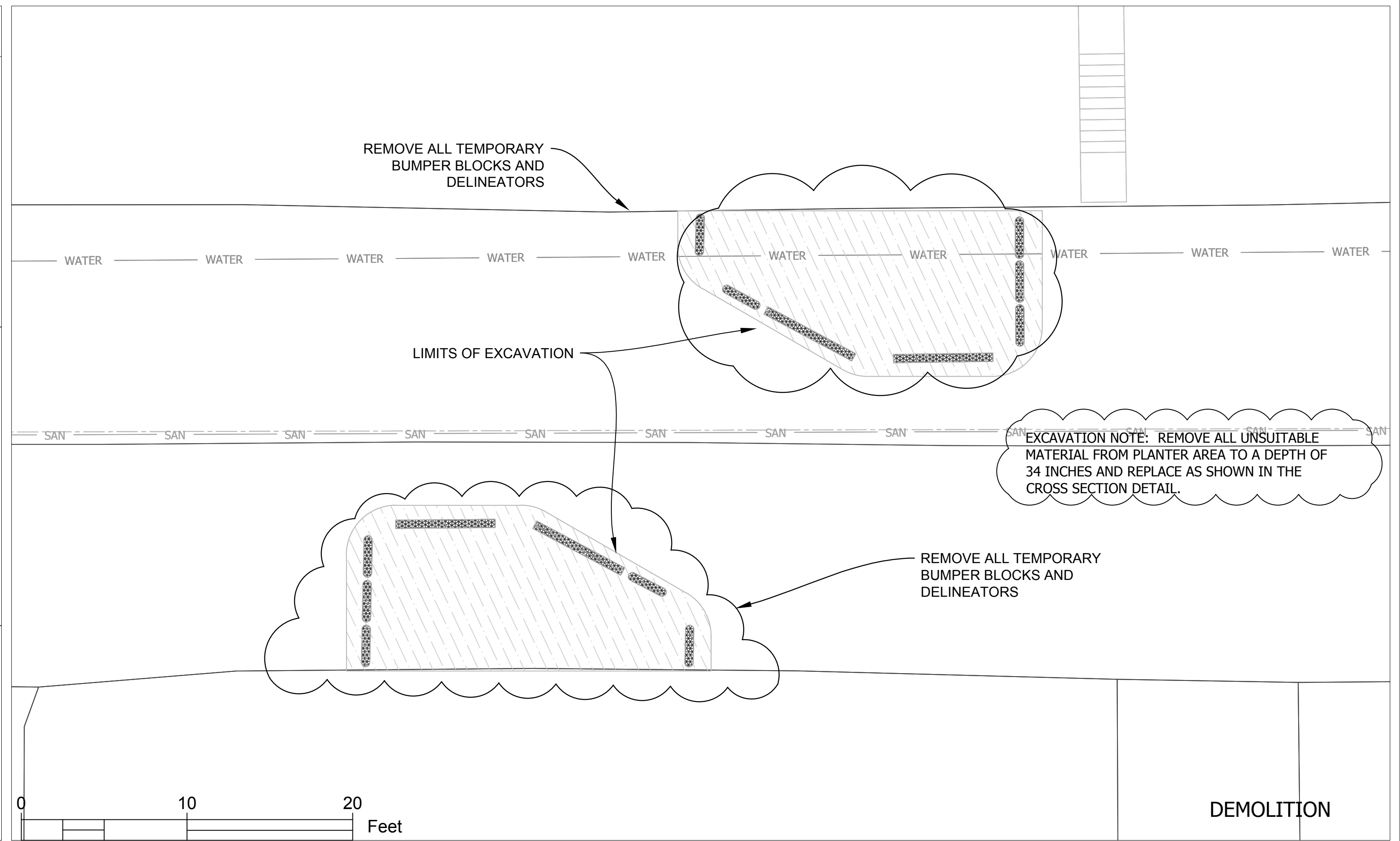
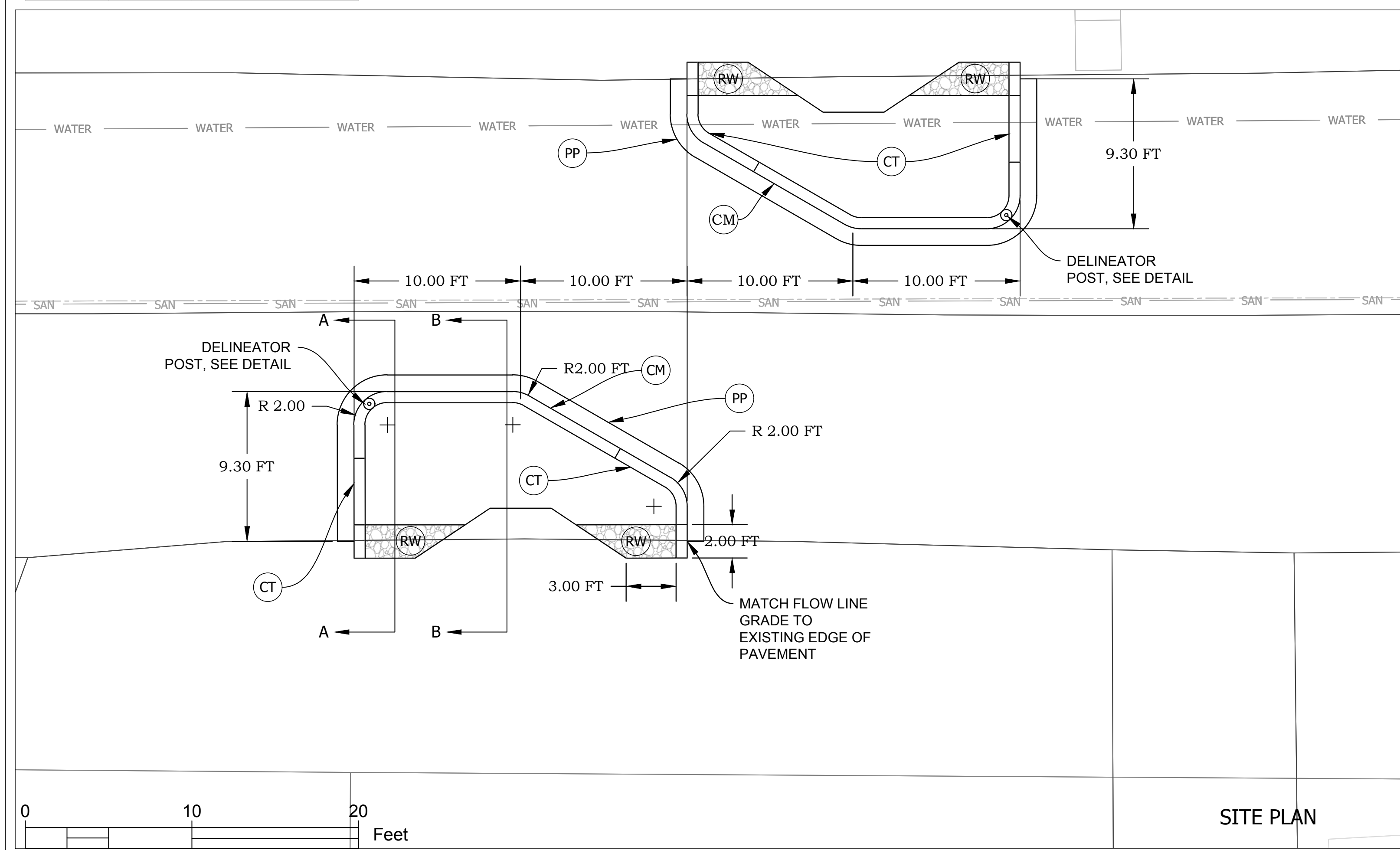
(CM) Standing Curb, Concrete, Modified  
(PP) Pavement Patch, 1 1/2" HMA Surface on 9" PCCP



RECOMMENDED FOR APPROVAL *Neil H. Kopper* 10/22/2020  
CITY ENGINEER DATE  
DESIGNED: DRAWN: REA  
CHECKED: CHECKED:

CITY OF BLOOMINGTON  
ENGINEERING DEPARTMENT  
EAST ALLEN STREET  
TRAFFIC CALMING

HORIZONTAL SCALE 1" = 10'	BRIDGE FILE
VERTICLE SCALE	DESIGNATION
SURVEY BOOK	SHEETS
CONTRACT	4 of 6 PROJECT



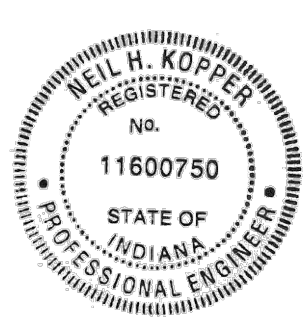
- CT


3' Curb Taper, Concrete, Modified
- CM
- Standing Curb, Concrete, Modified

RW

6" Riprap, Uniform type 'B' on Geotextile Type 1A

PP



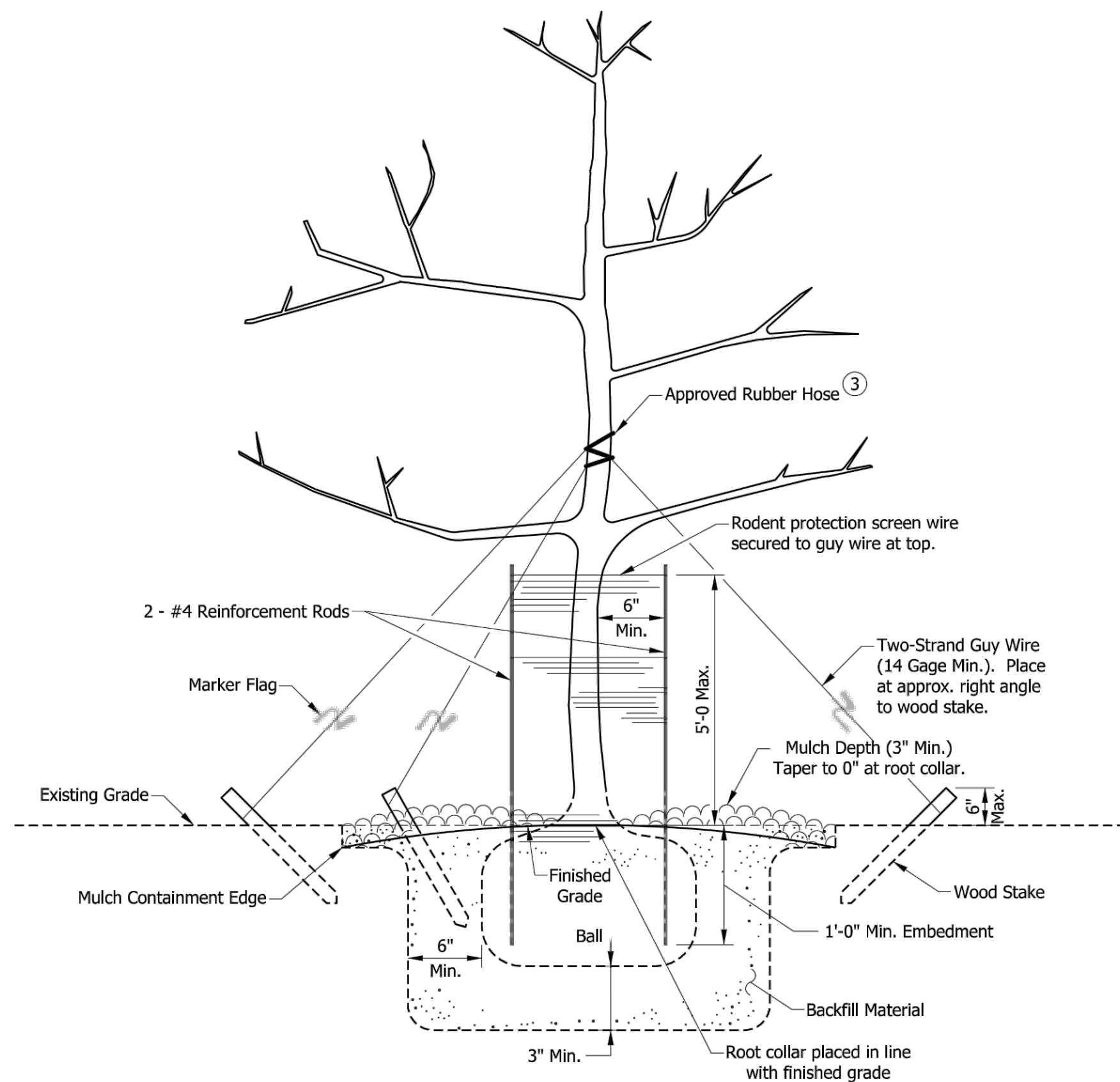
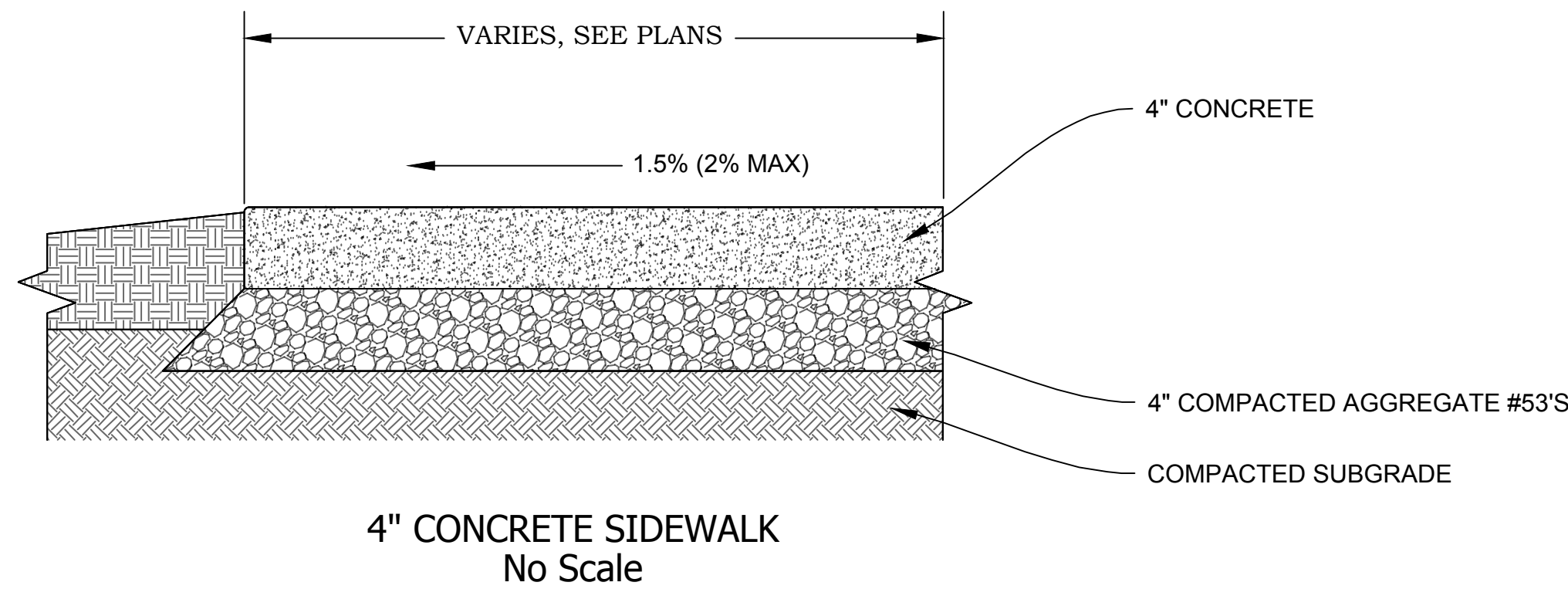
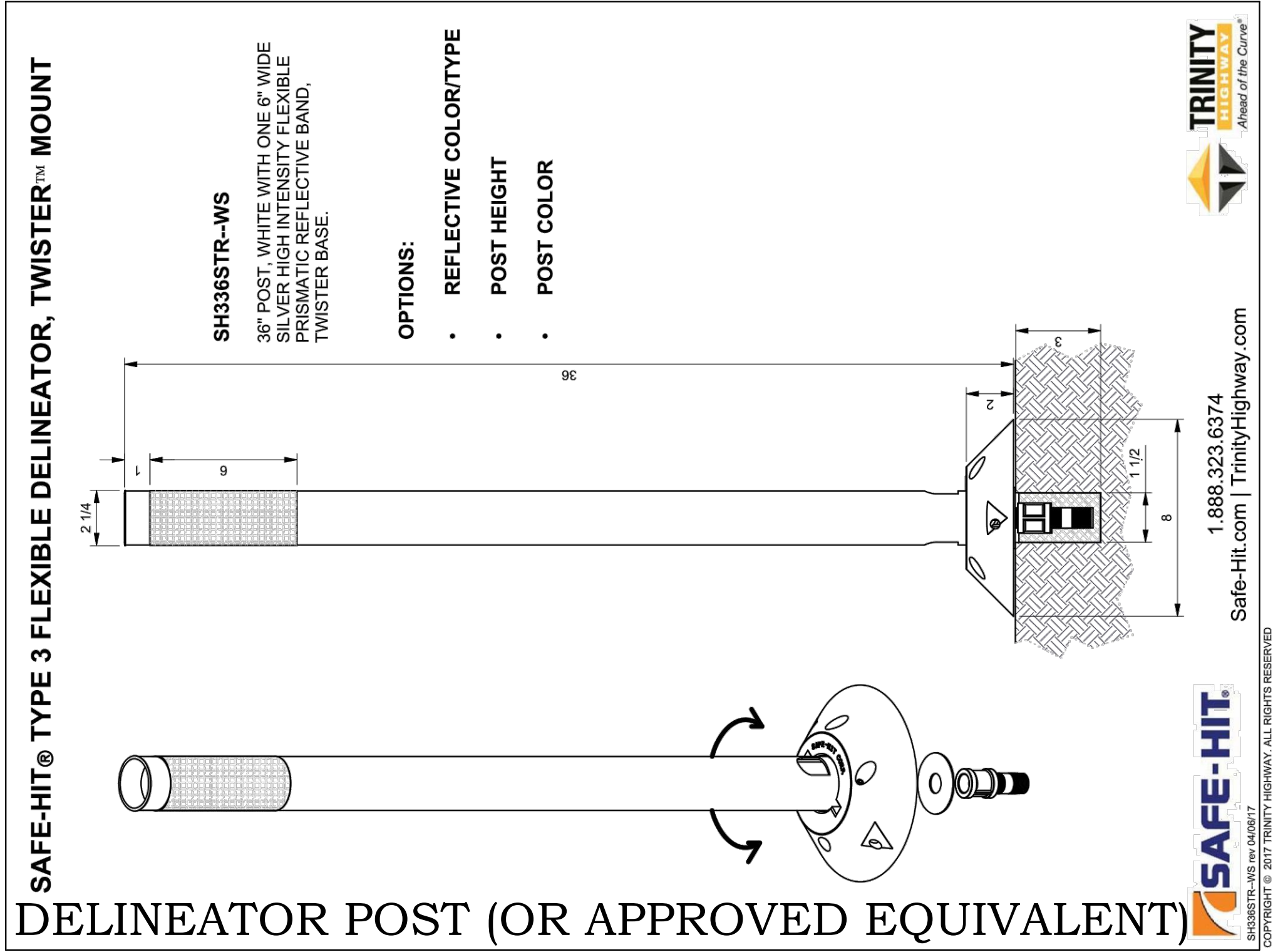
RECOMMENDED FOR APPROVAL		10/22/2020
DESIGNED:	DRAWN:	REA
CHECKED:	CHECKED:	

**CITY OF BLOOMINGTON  
ENGINEERING DEPARTMENT**

EAST ALLEN STREET  
TRAFFIC CALMING

HORIZONTAL SCALE 1" = 10'	BRIDGE FILE
VERTICLE SCALE	DESIGNATION
SURVEY BOOK	SHEETS
CONTRACT	5 of 6 PROJECT



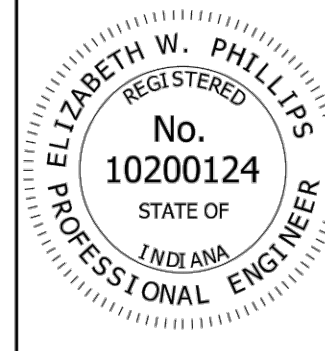


**NOTES:**

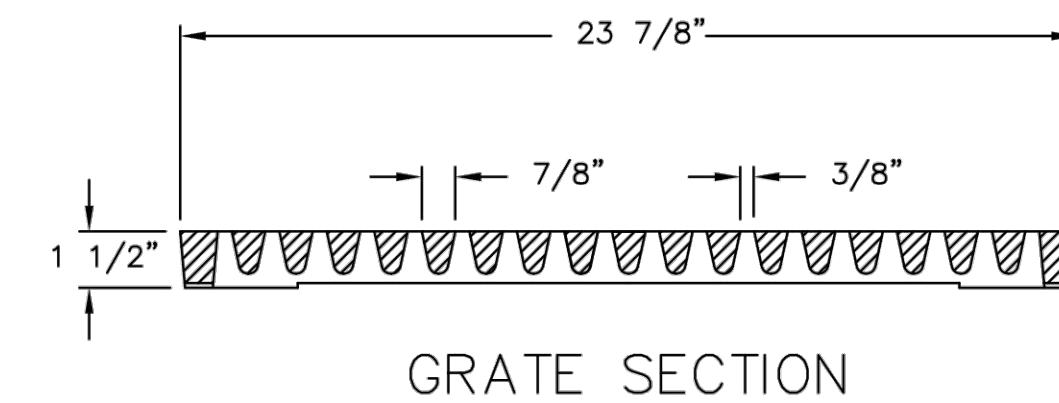
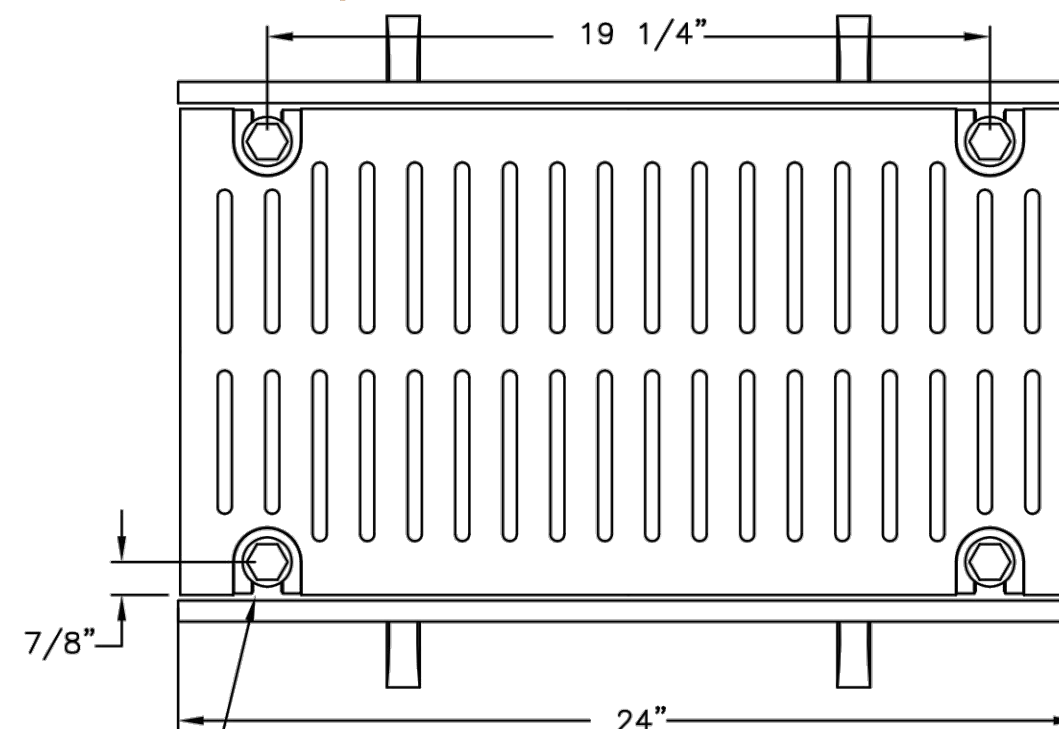
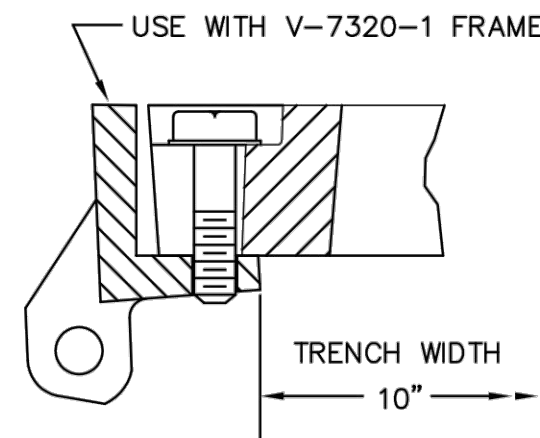
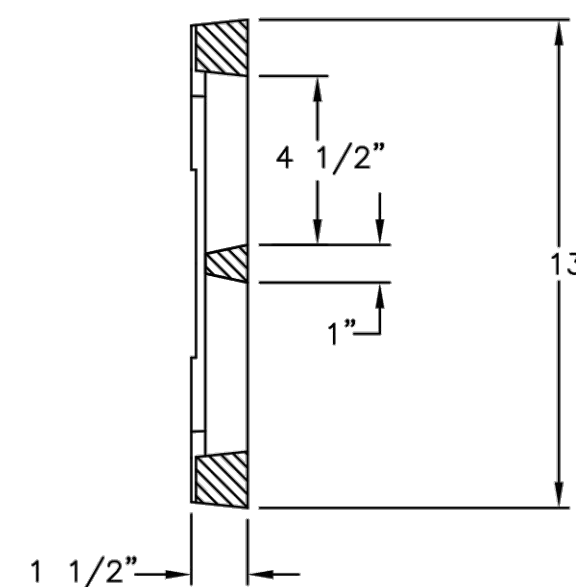
1. This detail applies to Evergreen Trees 48 in. tall and over with exception that screen wire protection shall not be required.
2. Plastic coil type protective wrapping will be acceptable as an alternative to the screen wire and reinforcement rod method of tree protection or staked trees of less than 2 in. caliper.
- ③ See Standard Drawing E 622-LSPL-11 for Rubber Hose Detail.

NOTE: TREE PLANTING WILL BE DONE BY OTHERS.

NOTE: 2 IN. OR GREATER TREE REQUIRED FOR THIS PROJECT. DETAIL IS PROVIDED FOR PLANTING AND STAKING PURPOSES.

INDIANA DEPARTMENT OF TRANSPORTATION	
PLANTING BALLED AND BURLAPPED TREE 1 1/4 IN. CALIPER AND GREATER SEPTEMBER 2018	
STANDARD DRAWING NO. E 622-LSPL-03	
	<p>/s/ Elizabeth W. Phillips 03/20/18 DESIGN STANDARDS ENGINEER DATE</p> <p>/s/ John Leckie 05/09/18 CHIEF ENGINEER DATE</p>

**V7320-1 V7383-20 Assembly**



**CAUTION: DO NOT DISASSEMBLE BOLTED GRATES BEFORE SETTING SECTIONS IN CONCRETE**



**Product Number**

47383261

**Design Features**

-Materials  
Trench Rail  
Gray Iron (CL35)  
Trench Grate  
Gray Iron (CL35)

-Design Load  
Heavy Duty  
-Open Area  
64 SQ. INCHES  
-Coating  
Undipped  
-√ Designates Machined Surface

**Certification**

- ASTM A48  
-  
-Country of Origin: USA

**Major Components**

47320110  
47383203

**Drawing Revision**

08/26/2006 Designer: DEW  
04/12/2012 Revised By: DJH

**Disclaimer**

Weights (lbs./kg) dimensions (inches/mm) and drawings provided for your guidance. We reserve the right to modify specifications without prior notice.  
CONFIDENTIAL: This drawing is the property of EJ GROUP, Inc., and embodies confidential information, registered marks, patents, trade secret information, and/or know how that is the property of EJ GROUP, Inc. Copyright © 2011 EJ GROUP, Inc. All rights reserved.

**Contact**

800.626.4653  
ejco.com

RECOMMENDED FOR APPROVAL  10/22/2020  
CITY ENGINEER DATE

DESIGNED: \_\_\_\_\_ DRAWN: REA  
CHECKED: \_\_\_\_\_ CHECKED: \_\_\_\_\_



**CITY OF BLOOMINGTON  
ENGINEERING DEPARTMENT**

**EAST ALLEN STREET  
TRAFFIC CALMING**

HORIZONTAL SCALE BRIDGE FILE

VERTICLE SCALE DESIGNATION

SURVEY BOOK SHEETS

CONTRACT 6 of 6 PROJECT