

Legend

Base Map

- Railroad
- Drainage basin divide
- Drain.basin major-divide
- Drain.basin minor-divide
- Creek
- Intermittent stream
- Spot elevation
- Contour line
- Index contour line with elevation
- Building with address
- Fence
- 100-year flood plain
- PLS sect. 1/4-sect lines
- 1000-foot grid line
- Edge of pavement
- Edge of travelled lane
- Edge of alley
- Street centerline
- Alley centerline
- Private road centerline
- Parking area
- Municipal boundary line
- Municipal boundary ticks on city side
- Zoning boundary
- Township boundary

Neighborhood Association Boundary

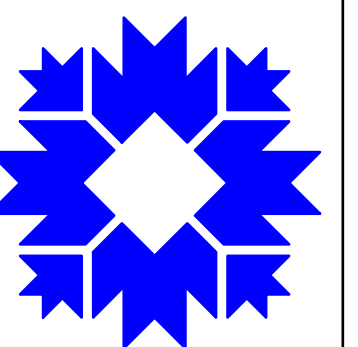
Proposed Conservation District

- Contributing
- Non-Contributing
- Notable
- Outstanding

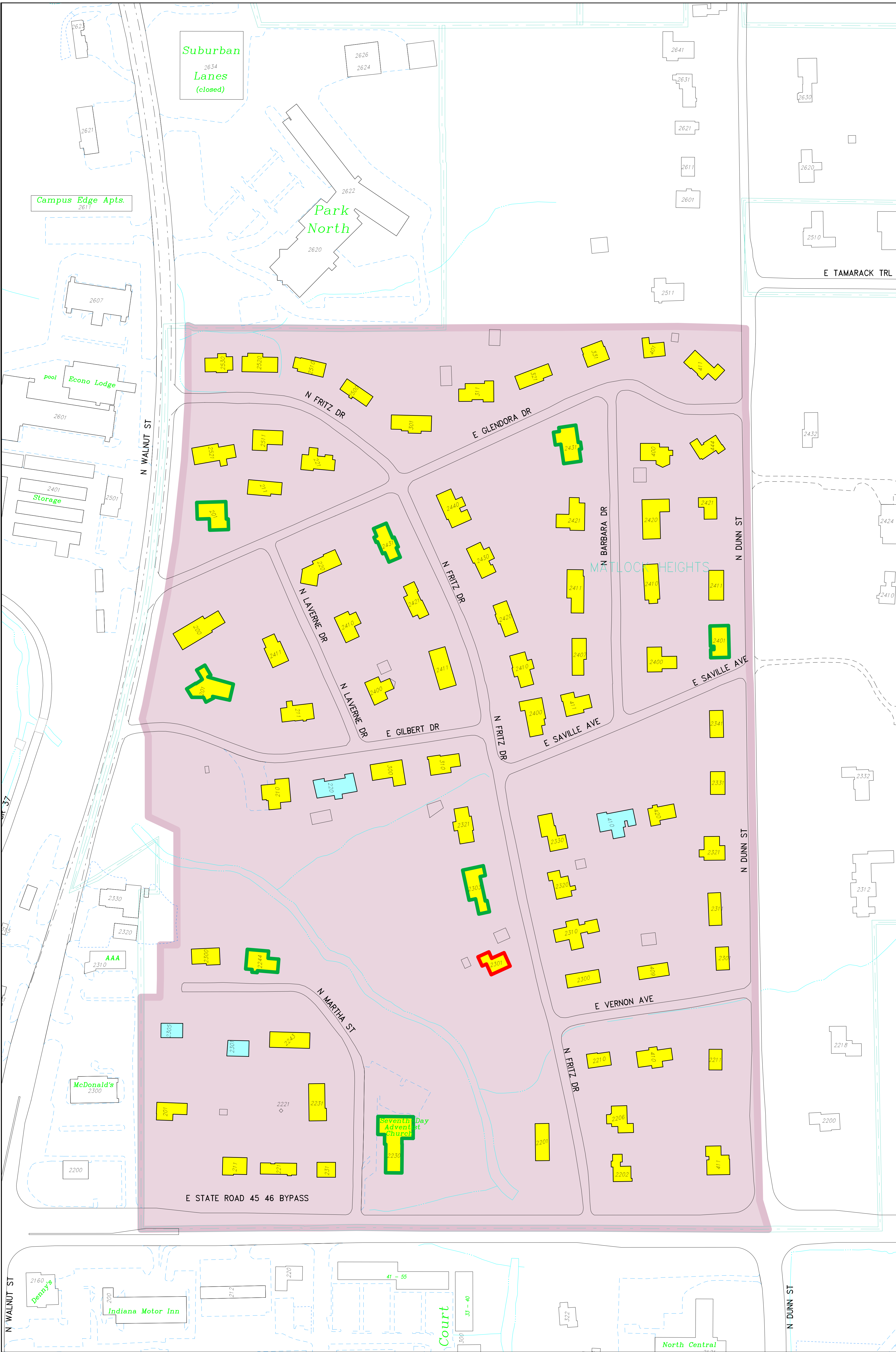
TmathtcdDP

Jan 2, 2014

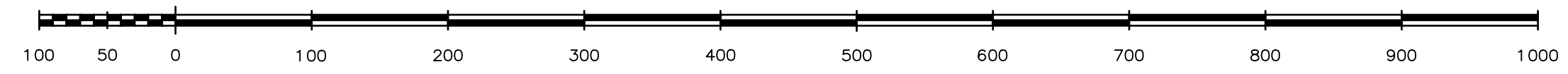
stierm



City of Bloomington
HAND Department
Geographic Information System



Scale: 1" = 100'



City of Bloomington, Indiana
Geographic Information System

This map was produced by the City of Bloomington GIS, for use by the City and general public as map information. The topographic and planimetric information is based on aerial photography flown in March 1991 and March 1992. Updates from aerial orthorectification took place in April 1998, April 2003, March 2006, and April 2010. Information is updated by GIS technicians from development drawings, plats, and other sources. The accuracy of information contained in this document is based on National Mapping Standards, however it is NOT warranted.

The Corporation boundary reflects annexations effective January 1, 2012.
Information and Technology Services Department
9 January 2013

Housing and Neighborhood Development
Matlock Heights Proposed Conservation District
& Historic Survey Rating