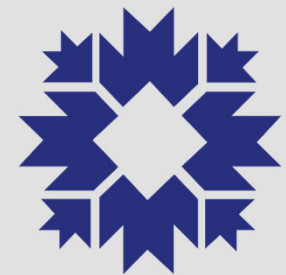


RESIDENTIAL STORMWATER GRANTS 2021

January 19, 2021

Zoom



CITY OF BLOOMINGTON
UTILITIES

AGENDA

- **Introductions**
- **Residential Stormwater Grants: 2021**
- **Bloomington's Watersheds**
- **Residential Stormwater Practices**
- **Submitting the Letter of Intent (Optional) and Application**
- **Question and Answer Session**
- **Adjourn**

CITY OF BLOOMINGTON MS4 STAFF

Holly McLauchlin

Moderator

Kriste Lindberg

Stormwater Education
Specialist

**Sam Arthur and Brent
Solbrig**

Green Infrastructure Crew

Chris Wang

Stormwater Intern



DEADLINES

Letter of Intent Due (Optional)

Monday, February 1, 2021 by 5 pm

Applications Due

Monday, March 1, 2021 by 5 pm

SUBMITALS

Submit Applications To:

Letter of Intent and Application

bloomington.in.gov/utilities/stormwater/grants



RESIDENTIAL STORMWATER GRANTS

- Addressing neighborhood drainage and erosion issues
- Small grants for stormwater projects on private property
- CBU will award a total of \$70,000 in 2021

A Little History - 2019 GRANTS

- **\$35,000 was allocated for the 2019 program**
- **26 applications totaling \$167,000**
- **Eleven projects were awarded:**
 - Four rain gardens
 - Four driveway culverts
 - One dry creek bed
 - One ditch stabilization/rain garden
 - One drainage improvement project
- **Project costs ranged from around \$500 to \$5,000**

2020 GRANTS

- **\$70,000 was allocated for the 2020 program**
- **50 applications totaling \$275,857.98**
- **16 projects were awarded (of these projects 8 are located in census blocks with the lowest median neighborhood incomes; these projects comprise \$36,883):**
 - Five rain gardens
 - Eight dry creek beds
 - One ditch stabilization/rain garden
 - Two drainage improvement projects
- **Project costs ranged from around \$2,000 to \$8,000; average was about \$5,000**

ELIGIBILITY



- **Single-family residential properties**
- **Applicants must pay the City of Bloomington's stormwater fee**
- **Applicant(s) must be the owner(s) of the property**
- **The parcels must be contiguous**

LETTER OF INTENT (optional) and APPLICATION INSTRUCTIONS

- First, contact us for more info and a Site Visit
- Read the Guidelines (see website)
- Choose a Contractor
- Applicant Information
- Project Information
- Description of Existing Conditions
- Description of Proposed Project

bloomington.in.gov/utilities/stormwater/grants



APPLICATION INSTRUCTION - Attachments

- Location Map
- Photographs
- Plan View Sketch
- Cost Estimate





CHOOSING A CONTRACTOR

- Licensed and bonded
- Are they insured?
- Drainage experience
- Ask for examples
- Ask for references

PROJECT SELECTION

- **Technical Staff Review**

- Location
- Drainage area
- Proximity to waterways or stormwater infrastructure
- Potential to reduce flooding
- Potential to improve water quality
- Median neighborhood income levels

- **Appointed Review Committee**

- Application materials
- Lower income neighborhoods
- Preference to number of people/area served
- Project feasibility
- Potential benefits

AWARDED PROJECTS

- **Grant Agreement**
- **CBU will inspect final projects**
- **All payments will be made in arrears**
- **5-year Maintenance Plan**



WHAT IS STORMWATER?

Water that flows over land from rainfall or snowmelt, before it enters natural waterways



OUR CHANGING CLIMATE

More frequent and intense rainfall events punctuated by longer periods of drought.

Remember February 7, 2019?



**MAYOR
JOHN
HAMILTON**

“As climate change makes stormwater challenges more frequent and severe, the city is committed to working with property owners to control flooding and mitigate future damage in environmentally responsible ways.”

We have an
opportunity to make
a difference.



STORMWATER PROGRAMS

- Storm Drain Marking Program
- Adopt-a-Drain
- Residential Stormwater Grants
- Homeowner Video Series

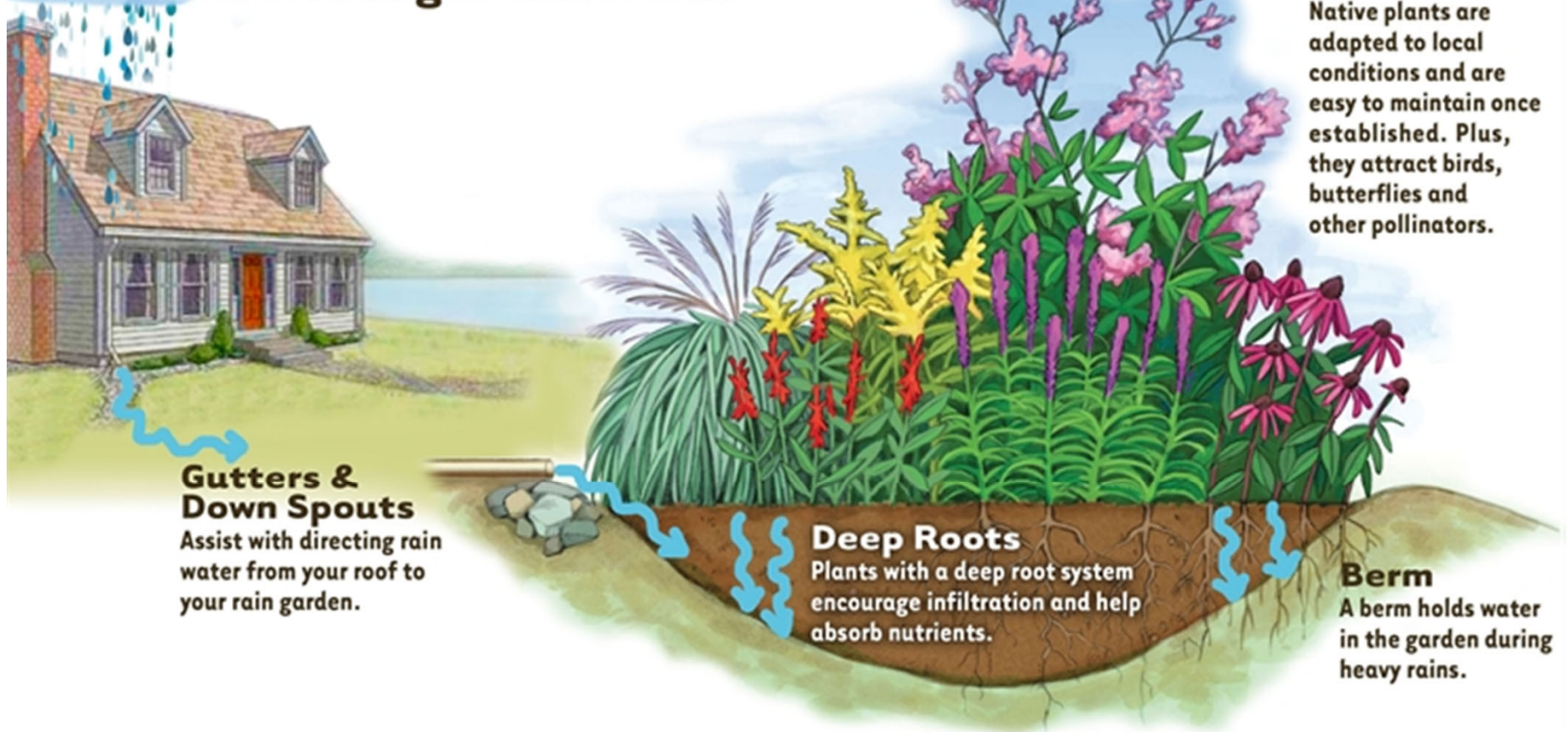




RESIDENTIAL STORMWATER PRACTICES

- Rain gardens
- Bioswales
- Dry Creek Beds
- Detention or Retention Ponds
- Ditch Stabilization
- Driveway Culverts

How does a rain garden work?



Gutters & Down Spouts

Assist with directing rain water from your roof to your rain garden.

Deep Roots

Plants with a deep root system encourage infiltration and help absorb nutrients.

Berm

A berm holds water in the garden during heavy rains.

Native Plants

Native plants are adapted to local conditions and are easy to maintain once established. Plus, they attract birds, butterflies and other pollinators.

RAIN GARDEN



BIOSWALE

- **Linear channel that is planted with vegetation similar to a rain garden**
- **Great for pollutant removal**
- **Requires engineered soil**
- **Large drainage areas will require an underdrain**

DRY CREEK BED

- Only carries water after rain events
- Not meant for ponding water or removing pollutants



RETENTION AND DETENTION PONDS – Maintenance

- Capture runoff to prevent downstream flooding
- May improve water quality





DRIVEWAY CULVERTS

- **Interface between public and private infrastructure**
- **Requires pre-construction meeting with CBU, the contractor, and the homeowner**

SUBMITTALS

**Submit Letter of Intent and
Applications To:**

bloomington.in.gov/utilities/stormwater/grants

CONTACT

Kriste Lindberg

Stormwater Education Specialist

stormwater@bloomington.in.gov

(812) 349-3617

QUESTIONS?

THANK YOU!