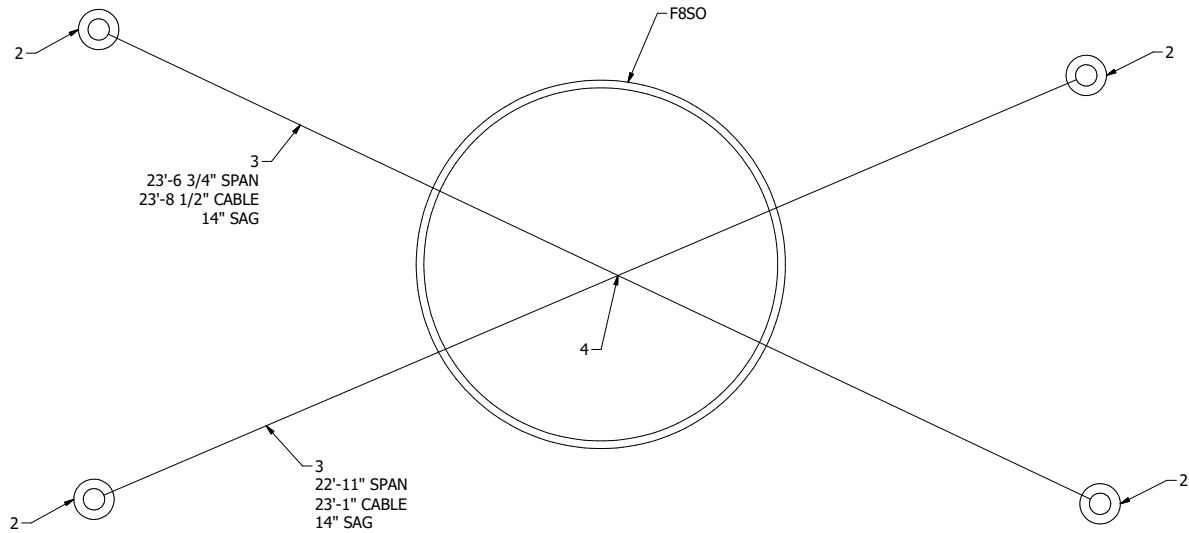


**NOTES:**

1. These cables and poles have NOT been fully engineered. Current sizing and pricing is subject to change until final engineering is complete.
2. Final engineering will occur once the layout has been approved and an engineering fee is paid.
3. Poles should be oriented so that the pad eyes are in line with the cables.
4. Cable lengths should be measured from center of clevis pins and must be verified prior to release.
5. Sag should be at least 5% of cable span length. Less sag will result in higher reactions and possible failure.
6. Take up for all turnbuckles will be split as half open and half closed.
7. All rings must have at least 4 mounting points. Rings larger than 8' in diameter should have no less than 6 mounting points and may require more depending on the layout.
8. It is recommended that equidistant mounting points are used for rings larger than 6' in diameter.
9. Any changes made to the layout after final engineering will require re-engineering and additional fees will be applied.
10. If required, drawings will be sealed for structural review with an Indiana P.E. Stamp. All dimensions (including minimum sag) must be verified in field after installation via Special Inspection by a third party inspector.
11. Layout not to scale.



**PEOPLES PARK LAYOUT**

ELEVATION: Ground Level

STAMP

**STRUCTURA**  
 9635 Widmer Rd. phone 913.390.8787  
 Lenexa, KS 66215 projects@structura.com

People's Park  
 Bloomington, IN

SHEET NUMBER

1 of 1

REVISION

C

DATE

12/17/2020

DRAWING

Peoples Park.idw

**PARTS LIST**

ITEM	QTY	PART NUMBER	DESCRIPTION
F850	1	AURA-RNG-D-8-L40SO-S(XX)-CA-STD	Aura Ring, Direct, 8' Diameter, Specify CCT and Output, Specify Stain, Catenary
2	4	ST-RND-15-5-S-C(XX)-CAT(0)-STD	Steel Round Pole, 15' Height, 5.563" Standard Wall, Specify Paint, One Pad Eye at 0 deg
3	2	CAB-14-119-ME-386-33-STD	Stainless Steel Cable, 1/4" Dia, 1x19, Marine Eyes, 3/8x6 J&J Turnbuckles
4	1	CC-14	Adjustable Cross Clip, 1/4" Cables
N/A	N/A	Required Engineering Fee - Sealed Reactions	\$1500
N/A	N/A	Optional Engineering Fee - Stamped Drawings	+\$1000