

**Categorical Exclusion**

**Appendix H**

**Air Quality**

Indiana Department of Transportation (INDOT)  
 State Preservation and Local Initiated Projects FY 2020 - 2024

SPONSOR	CONTR ACT # / LEAD DES	STIP NAME	ROUTE	WORK TYPE	LOCATION	DISTRICT	MILES	FEDERAL CATEGORY	Estimated Cost left to Complete Project*	PROGRAM	PHASE	FEDERAL	MATCH	2020	2021	2022	2023	2024
Bloomington	38353 / 1500398	Init.	VA VARI	Bike/Pedestrian Facilities	Jackson Creek Trail - Phase 2	Seymour	0	STPBG		Local Funds	RW	\$0.00	\$94,199.00	\$94,199.00				
										Local Funds	CN	\$0.00	\$414,000.00	\$414,000.00				
										Bloomington MPO	RW	\$155,801.00	\$0.00	\$155,801.00				
										Bloomington MPO	CN	\$755,801.00	\$0.00	\$755,801.00				
										Bloomington MPO - PYB	CN	\$900,199.00	\$0.00	\$900,199.00				
Performance Measure Impacted: Reliability and Freight Reliability																		
Bloomington	38353 / 1500398	M 05	VA VARI	Bike/Pedestrian Facilities	Jackson Creek Trail - Phase 2	Seymour	0	Multiple	\$2,253,668.55	Local Funds	CN	\$0.00	\$450,199.00	\$450,199.00				
										Bloomington MPO	CN	\$450,000.00	\$0.00	\$450,000.00				
Performance Measure Impacted: Reliability and Freight Reliability																		
Comments:Modify CN FY 2021 funds \$900,199.																		
Indiana Department of Transportation	40060 / 1602147	Init.	SR 46	HMA Overlay, Preventive Maintenance	0.55 mile E of SR 45 (College Mall Rd) to SR 446	Seymour	1.413	NHPP		Road Construction	CN	\$482,677.60	\$120,669.40	\$603,347.00				
Performance Measure Impacted: Pavement Condition																		
Indiana Department of Transportation	40072 / 1700055	Init.	SR 45	HMA Overlay, Preventive Maintenance	From SR 445 to I-69 ( O & M Limits)	Seymour	11.17	STPBG		Road Construction	CN	\$2,302,065.60	\$575,516.40	\$2,877,582.00				
Performance Measure Impacted: Pavement Condition																		
Monroe County	40292 / 1700733	Init.	ST 1001	Safety Revisions	Intersection Improvement at Curry Pike, Woodyard Road, & Smith Pike Intersection	Seymour	0	STPBG		Local Funds	RW	\$0.00	\$200,000.00	\$200,000.00				
										Local Funds	CN	\$0.00	\$1,099,867.00	\$1,099,867.00				
										Bloomington MPO	CN	\$1,000,133.00	\$0.00	\$1,000,133.00				
Performance Measure Impacted: Safety																		
Bloomington	40293 / 1700735	Init.	ST 1014	Bike/Pedestrian Facilities	From existing B-Line Trail terminus at Adams Street to 171 h at Crescent	Seymour	.795	STPBG		Local Funds	RW	\$0.00	\$630,000.00	\$630,000.00				
										Local Funds	CN	\$0.00	\$287,500.00	\$287,500.00				
										Bloomington MPO	CN	\$1,150,000.00	\$0.00	\$1,150,000.00				
Performance Measure Impacted: Reliability and Freight Reliability																		
Bloomington	40293 / 1700735	A 03	ST 1014	Bike/Pedestrian Facilities	From existing B-Line Trail terminus at Adams Street to 171 h at Crescent	Seymour	.795	STPBG	\$2,717,500.00	Local Funds	CN	\$0.00	\$875,000.00	\$875,000.00				

\*Estimated Costs left to Complete Project column is for costs that may extend beyond the four years of a STIP. This column is not fiscally constrained and is for information purposes.

Indiana Department of Transportation (INDOT)

State Preservation and Local Initiated Projects FY 2020 - 2024

SPONSOR	CONTRACT # / LEAD DES	STIP NAME	ROUTE	WORK TYPE	LOCATION	DISTRICT	MILES	FEDERAL CATEGORY	Estimated Cost left to Complete Project*	PROGRAM	PHASE	FEDERAL	MATCH	2020	2021	2022	2023	2024
Performance Measure Impacted: Reliability and Freight Reliability																		
Comments:Amending Local CN phase for FY 2021. BMPO-TIP Resolution dated 4-12-19																		
Bloomington	40293 / 1700735	A 36	ST 1014	Bike/Pedestrian Facilities	From existing B-Line Trail terminus at Adams Street to 171 h at Crescent	Seymour	.795	STBG	\$3,982,050.00	Local Funds	RW	\$0.00	\$179,410.00		\$179,410.00			
										Bloomington MPO	RW	\$717,640.00	\$0.00		\$717,640.00			
Performance Measure Impacted: Reliability and Freight Reliability																		
Comments:Add new Phase RW \$897,050 to FY 2021. BMPO Meeting Minutes Dated 9/11/2020.																		
Bloomington	40294 / 1700736	Init.	VA 1036	Bike/Pedestrian Facilities	Multi-use Trail on Sare Road from Moores Pike to Buttonwood Lane	Seymour	.833	STPBG		Local Funds	CN	\$0.00	\$333,500.00	\$333,500.00				
										Bloomington MPO	CN	\$1,334,000.00	\$0.00	\$1,334,000.00				
Performance Measure Impacted: Reliability and Freight Reliability																		
Bloomington	40294 / 1700736	A 07	VA 1036	Bike/Pedestrian Facilities	Multi-use Trail on Sare Road from Moores Pike to Buttonwood Lane	Seymour	.833	STBG	\$2,736,645.00	Local Funds	CN	\$0.00	\$523,801.00	\$523,801.00				
										Bloomington MPO - PYB	CN	\$182,199.00	\$0.00	\$182,199.00				
Performance Measure Impacted: Reliability and Freight Reliability																		
Comments:CN PYB Phase for \$182,199 FY 2020. Bloomington MPO Tip Page via Administrative modification Tip Dated 5-10-19. CN Local Phase for \$523,801 FY 2020, Bloomington MPO Tip Page via Administrative modification Dated 5-10-2019.																		
Bloomington	40336 / 1700974	Init.	VA 1032	Bike/Pedestrian Facilities	Systematic safety improvements expected to include approximately 25	Seymour	0	STPBG		Local Funds	CN	\$0.00	\$99,316.00	\$99,316.00				
										Bloomington MPO	CN	\$470,684.00	\$0.00	\$470,684.00				
Performance Measure Impacted: Reliability and Freight Reliability																		
Bloomington	40337 / 1700976	Init.	VA 1032	Bike/Pedestrian Facilities	Systematic safety improvements expected to include approximately 25	Seymour	0	STPBG		Local Funds	CN	\$0.00	\$99,316.00	\$99,316.00				
										Bloomington MPO	CN	\$470,684.00	\$0.00	\$470,684.00				
Performance Measure Impacted: Reliability and Freight Reliability																		
Monroe County	40890 / 1702957	Init.	IR 1059	New Road Construction	Industrial Park Drive Extension/ Vernal Pike Connector Road	Seymour	.5	STPBG		Group III Program	CN	\$7,088,000.00	\$0.00			\$7,088,000.00		
										Local Funds	CN	\$0.00	\$3,474,000.00		\$1,702,000.00	\$1,772,000.00		
										Bloomington MPO	CN	\$6,808,000.00	\$0.00		\$6,808,000.00			
Performance Measure Impacted: Pavement Condition																		
Monroe County	40890 / 1702957	A 07	IR 1059	New Road Construction	Industrial Park Drive Extension/ Vernal Pike Connector Road	Seymour	.5	STBG	\$9,289,700.00	Group IV Program	RW	\$836,000.00	\$0.00		\$836,000.00			

\*Estimated Costs left to Complete Project column is for costs that may extend beyond the four years of a STIP. This column is not fiscally constrained and is for information purposes.



**Categorical Exclusion**

**Appendix I**

**Additional Studies/Reports**

**hydrogeology inc.**

1211 S Walnut St  
Bloomington, IN 47401

**B-Line Trail Extension**

**Bloomington, Indiana**

## **Karst Feature Survey**

AZTEC Engineering  
Attn: Adrian Reid, P.E.  
320 W. 8th Street, Suite 100  
Bloomington, IN 47403

May 7, 2019



---

Jason N. Krothe, LPG -2511  
Senior Geologist, President



## Karst Feature Survey

## B-Line Trail Extension Bloomington, Indiana

Prepared for:  
AZTEC Engineering

Prepared by:  
Hydrogeology, Inc.  
1211 S. Walnut Street  
Bloomington, Indiana 47401  
Tel 812.339.3560  
Fax 812.339.3557

Date:  
May 7, 2019

*This document is intended only for the use of the individual or entity for which it was prepared and may contain information that is privileged, confidential and exempt from disclosure under applicable law. Any dissemination, distribution or copying of this document is strictly prohibited.*

## Table of Contents

<b>Executive Summary</b>	<b>1</b>
<b>1.0 Project Overview</b>	<b>2</b>
1.1 Introduction	2
1.2 Karst Survey Area	2
1.3 Karst Geology/ Physiography	2
<b>2.0 Karst Survey Results</b>	<b>3</b>
2.1 Field Survey	4
2.2 Karst Feature Management Plan	4
2.3 Study Limitations	4
<b>3.0 Summary and Conclusions</b>	<b>5</b>
<b>4.0 References</b>	<b>6</b>

### Figures

Figure 1	Site Location
Figure 2	B-Line Trail Extension
Figure 3	Closed Depression
Figure 4	Previous Dye Traces
Figure 5	Karst Features
Figure 6	Karst Features (B-1, B-2, B-3)
Figure 7	Karst Features (B-4, B-5, B-6, B-7)
Figure 8	Vegetated Areas

### Appendices

A	Field Photos
B	Karst Feature Treatment Technical Specifications



**Executive Summary**

On behalf of AZTEC Engineering, Hydrogeology Inc. (HGI) conducted a karst survey for the proposed extension of the B-Line Trail in Bloomington, Monroe County, Indiana - Figure 1. The survey area is underlain by the St. Louis Limestone, which is one of the primary karst forming bedrock units in Indiana. Seven sinkholes were documented during the field survey. Based on the design plans for this project it appears all seven sinkholes have been avoided. However, all the sinkholes identified in this report should be protected with erosion and sediment controls measures during construction and until after re-vegetation has occurred in areas disturbed during construction. Previous dye traces in the survey area indicate divergent groundwater flow to the northwest and south/southeast. Vegetation was present in portions of the survey area. Vegetation can obscure karst features and removal of such vegetation was beyond the scope of work for this project. It is possible additional karst features will be identified during excavation and ground clearing activities. Any potential karst feature identified during those activities should be protected with erosion and sediment control measures and inspected by a karst expert.

## 1.0 Project Overview

### 1.1 Introduction

This survey was conducted to identify any karst features that could be impacted by the extension of the B-Line Trail in Bloomington, Indiana. The B-Line trail extensions runs from N Adams Street to N Crescent Drive (Figure 1). The survey was conducted by Hydrogeology Inc. (HGI) of Bloomington, Indiana.

### 1.2 Karst Survey Area

The karst survey area for this project consisted of an approximately 4,150-foot alignment for the B-Line Trail extension (Figure 2). When possible, a 50-ft buffer outside of the alignment was inspected for karst features. Where appropriate, areas outside of the 50-ft buffer were examined for karst features. Buildings and other man-made structures prevented inspection out to 50-ft in some areas.

### 1.3 Karst Geology / Physiography

The study area is located with the Mitchell Plateau physiographic region. The Mitchell Plateau is prone to sinkhole development and contains most of the sinkholes in Indiana. Carbonate bedrock of the Blue River Group, consisting of the St. Louis Limestone, underlies the survey area (Hasenmueller, et al, 2009). The St. Louis Limestone is one of the primary karst forming bedrock units in Indiana.

### 1.4 Karst Desktop Review

A desktop review was conducted prior to field survey to identify any previously mapped karst features relevant to the study area. Topographic map and Light Detecting and Ranging (LIDAR) data were utilized to identify sinkholes, caves, and springs. Three potential sinkholes were identified from the desktop review and later confirmed (Sinkhole B-3, B-4 and B-7) in the field survey.

One closed depression was identified during the desktop review that was determined not to be a sinkhole upon field review. The closed depression is approximately 200 ft wide with the last closed topographic contour at 832 ft and is located on the north side of the railroad bed (Appendix A, Figure 3). A drainage structure is located on the southern end of the closed depression that transmits surface runoff under the railroad bed and discharges on the south side of railroad bed. The closed depression was examined for karst development including soil piping and other signs of internal surface drainage. No such signs were observed. It is the opinion of HGI that this closed depression is solely the result of the alteration of the existing topography from the construction of the railroad bed and not karst in nature.

Multiple dye traces have been conducted in the study area (Figure 4, Fitch, 1994). Based on the results of those traces, groundwater flow in the survey area likely exhibits divergent flow to the northwest and south/southeast.

## 2.0 Karst Survey Results

### 2.1 – Field Survey

A field survey was conducted on March 6, 2018. Seven sinkholes were identified within the survey area (Figures 5-7, Appendix A). Sinkholes were field located with a Trimble® GeoXT handheld GPS unit, which has sub-meter accuracy. Sinkhole dimensions were based on 2-ft topographic contours (Monroe County, 2010). HGI was provided with design plans from Aztec Engineering for the project. Based on those plans no sinkholes are expected to have direct impact from the construction (Figures 6 & 7). The following karst features were documented during the field survey.

#### *Sinkhole B-1*

B-1 is a sinkhole with no throat or bedrock visible. It is filled with tires and other debris. The sinkhole is approximately 20-ft long by 11-ft wide by 2-ft deep.

#### *Sinkhole B-2*

B-2 is a potential sinkhole that had standing water in it at the time of field inspection. It is approximately 130-ft long by 105-ft wide by 4-ft deep.

#### *Sinkhole B-3*

B-3 is a sinkhole with no throat or bedrock present. It is approximately 65-ft long by 35-ft wide by 4-ft deep.

#### *Sinkhole B-4*

B-4 is a sinkhole with a defined channel in the bottom draining into a debris filled throat. It is approximately 315-ft long by 235-ft wide by 16-ft deep. This sinkhole would be a suitable injection point for a dye trace.

#### *Sinkhole B-5*

B-5 is a sinkhole with no throat or bedrock present. It is approximately 110-ft long by 80-ft wide by 6-ft deep.

### *Sinkhole B-6*

B-6 is a sinkhole with no throat or bedrock present. It is approximately 40-ft long by 25-ft wide by 2-ft deep.

### *Sinkhole B-7*

B-7 is a sinkhole with no throat or bedrock present. It is approximately 310-ft long by 275-ft wide by 16-ft deep.

## **2.2 Karst Feature Management Plan**

Seven sinkholes were identified in the survey area. There are three recommended mitigation measures for the documented sinkholes:

- 1.) Avoidance & Protection –When possible, avoidance of sinkholes is the preferred mitigation measure. Based on plans provided to HGI by Aztec Engineering, all sinkholes appear to have been avoided. Although the sinkholes appear to have been avoided, they should be protected with appropriate erosion and sediment control measures during construction and until the areas disturbed during construction have been re-vegetated.
- 2.) Aggregate Cap – Any sinkhole within the construction limits, that cannot be avoided, and is not under pavement should receive an aggregate cap as detailed in Appendix B.
- 3.) Concrete Cap – Any sinkhole under pavement should receive as concrete cap as detailed in Appendix B.

## **2.3 Study Limitations**

The identification of karst features for the study area was limited to surface inspection. No subsurface investigations were conducted. Undocumented karst features are likely present in the subsurface. Vegetation was present in portions of the study area (Figure 8). Identification of karst surface features can be difficult in areas with dense ground vegetation. Clearing of ground vegetation was not within the scope of work for this project.

### 3.0 Summary and Conclusions

Seven sinkholes were identified in the survey area for this project. It does not appear that any of the identified sinkholes will be directly impacted by the B-Line Trail Extension. However, all sinkholes identified in this report should be protected with appropriate erosions and sediment control measures during construction and until re-vegetation of the areas disturbed during construction has occurred. Previous dye traces in the survey area indicate divergent groundwater flow to the northwest and south/southeast. Dense vegetation was present in a large portion of the survey area, and vegetation clearing was beyond the scope of work for this project. If any potential karst feature is discovered during ground clearing operations or excavation, the feature should be protected by erosion and sediment control measures and inspected by a karst expert.

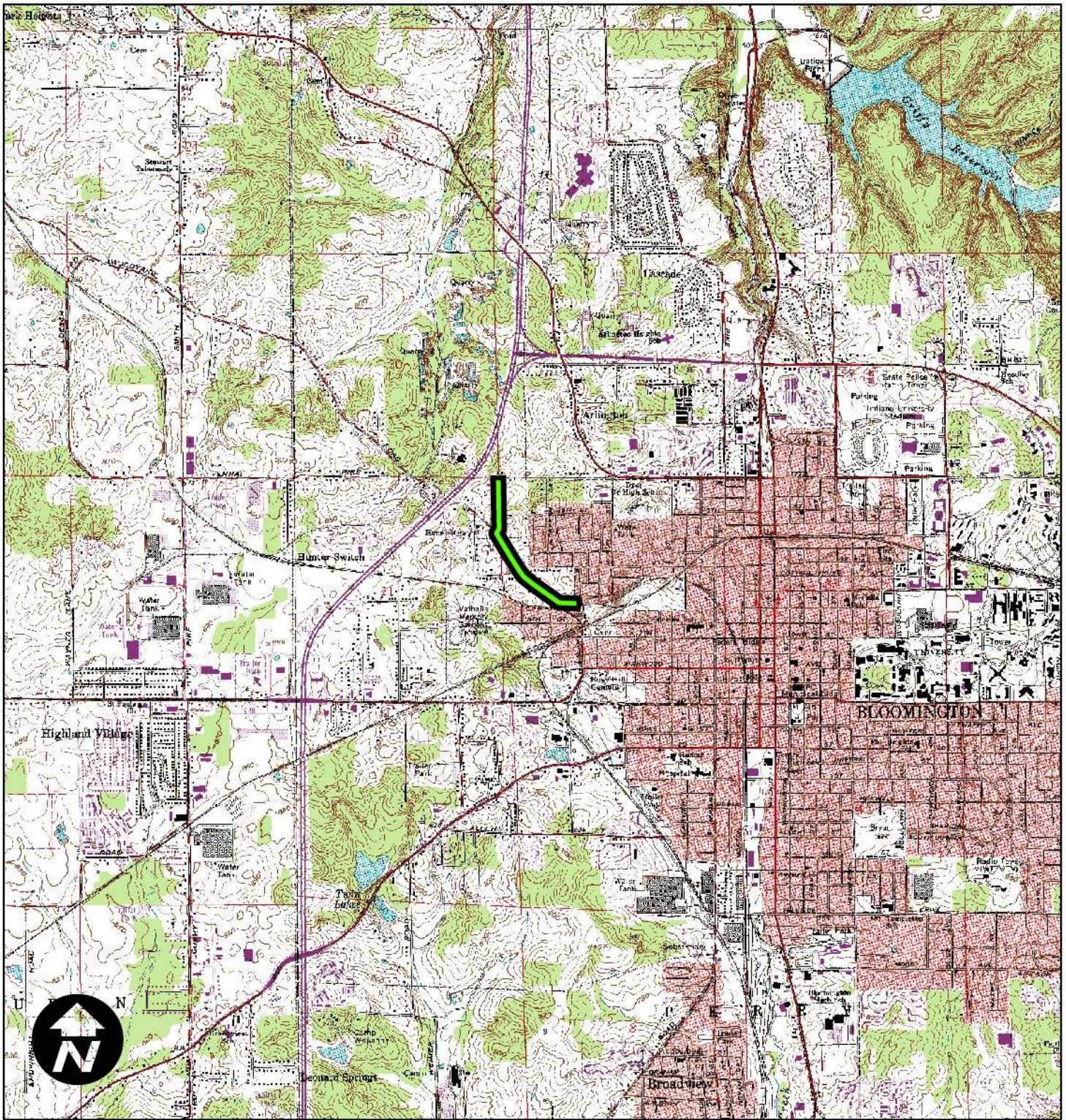
## 4.0 REFERENCES

Fitch, James R., Jr. "A Karst Groundwater Study to Delineate the Quarry Spring Basin Groundwaters Near the Lemon Lane Landfill, West-Central Bloomington, Indiana." Thesis. Indiana University, 1994. Print.

Hasenmueller, W. A., Estell, C. M., Keith, B., Thompson, T. A. 2009, Bedrock Geologic Map of Monroe County, Indiana: Indiana Geological Survey Miscellaneous Map 73

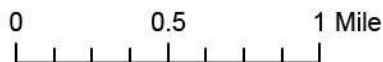
Monroe County, Indiana, 2011, 2-ft topographic contours.

U.S. Geologic Survey. 1980b. Bloomington Quadrangle, Indiana: 7.5-minute series (topographic).



**LEGEND**

 Site location



**B-LINE TRAIL EXTENSION  
KARST SURVEY  
BLOOMINGTON, IN**

**SITE LOCATION**

Monroe County



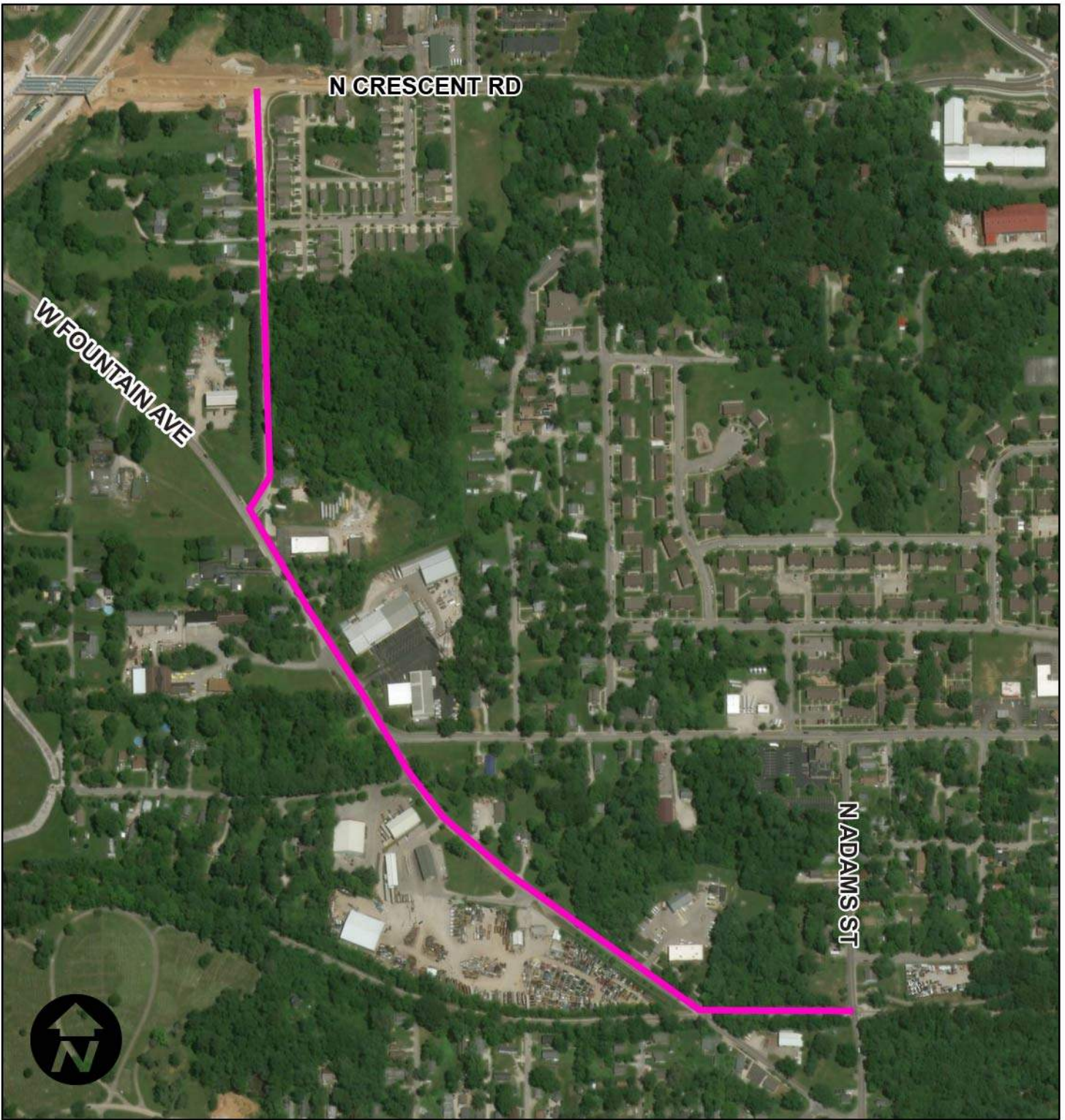
SOURCE: Indiana University Spatial Data Portal.

REFERENCE: U.S.G.S. 7.5 Minute Series Topographic Quadrangles: Bloomington, Indiana 1982.

**hydrogeology inc.**

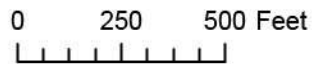
FIGURE

**1**



**LEGEND**

 **B-Line Trail Extension**



**B-LINE TRAIL EXTENSION  
KARST SURVEY  
BLOOMINGTON, IN**

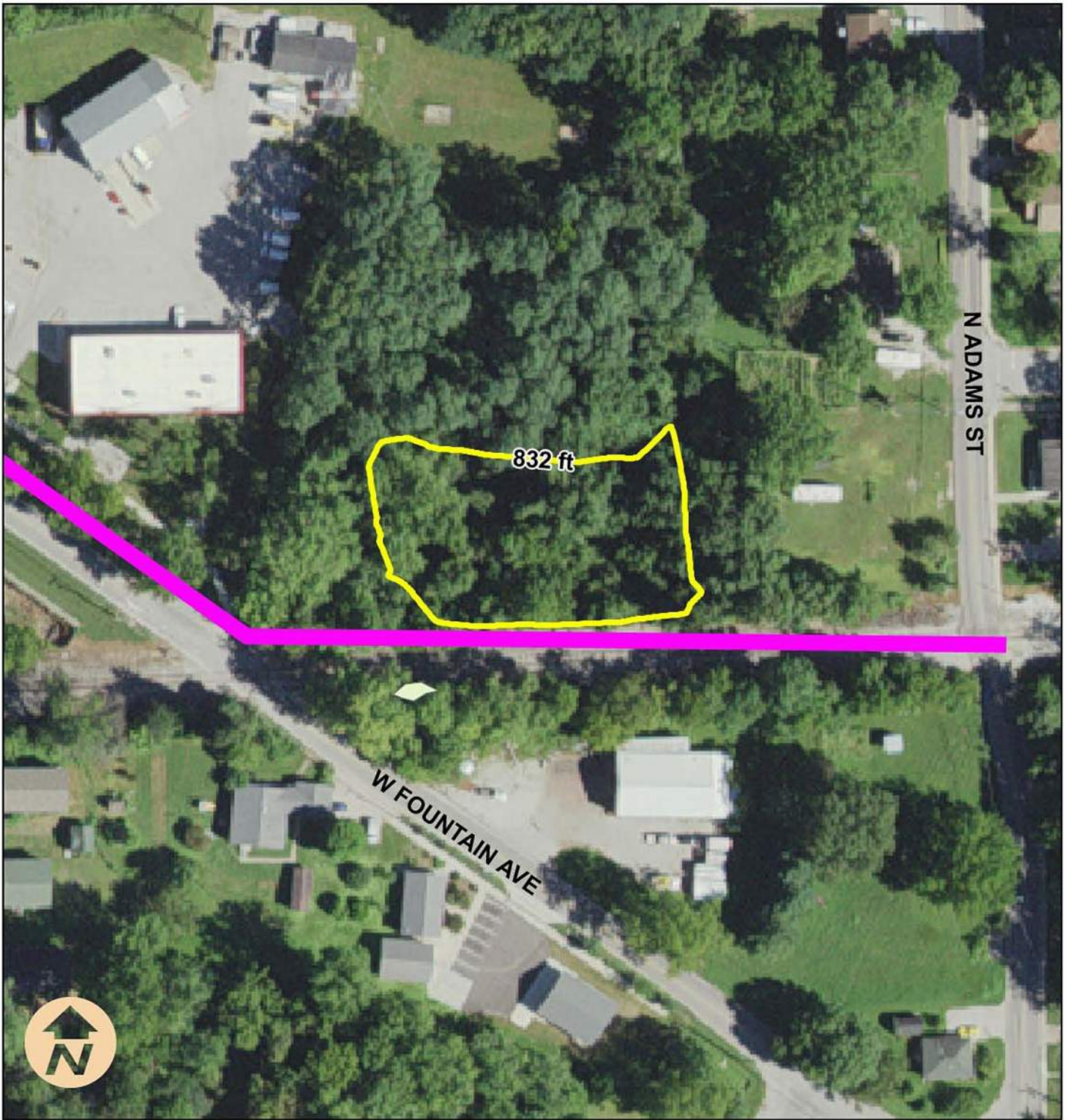
**B-LINE TRAIL EXTENSION**

**hydrogeology inc.**

FIGURE  
**2**

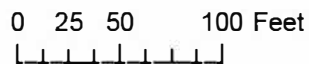
Image Source: National Agriculture Imagery Program (NAIP), Farm Services Agency (FSA), U. S. Department of Agriculture (USDA), UITS, Indiana Spatial Data Portal.





**LEGEND**

-  **Closed Depression**
-  **B-Line Trail Extension**



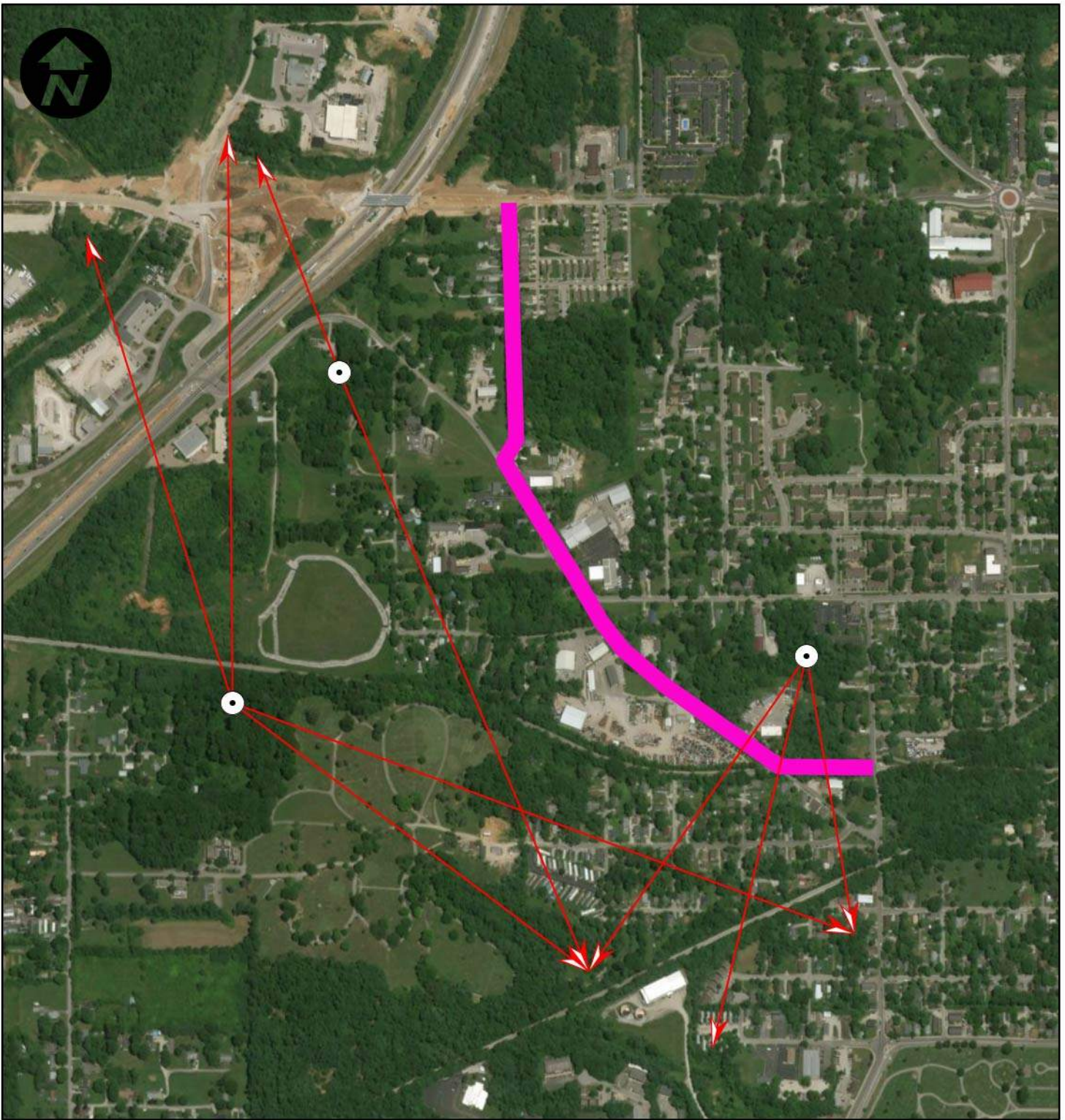
**B-LINE TRAIL EXTENSION  
KARST SURVEY  
BLOOMINGTON, IN**

**CLOSED DEPRESSION**

**hydrogeology inc.**

FIGURE  
**3**

Image Source: National Agriculture Imagery Program (NAIP), Farm Services Agency (FSA), U. S. Department of Agriculture (USDA), UITS, Indiana Spatial Data Portal.



**LEGEND**



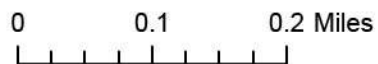
**Dye Injection Point**



**Dye Straight-line Travel Path**



**B-Line Trail Extension**



**B-LINE TRAIL EXTENSION  
KARST SURVEY  
BLOOMINGTON, IN**

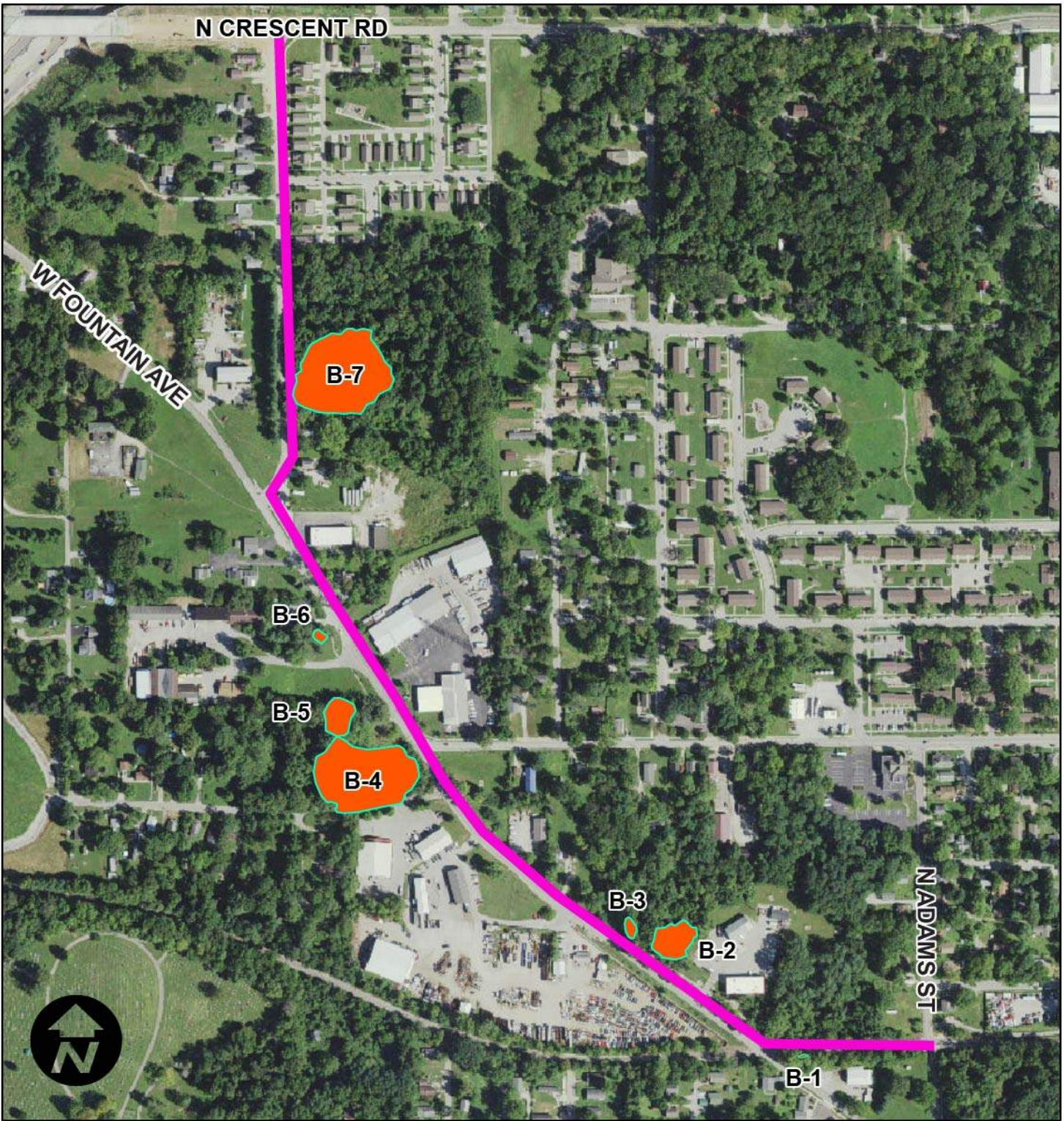
**PREVIOUS DYE TRACES**

**hydrogeology inc.**

FIGURE

**4**

Image Source: National Agriculture Imagery Program (NAIP), Farm Services Agency (FSA), U. S. Department of Agriculture (USDA), UITS, Indiana Spatial Data Portal.



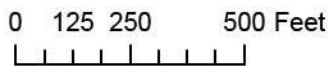
**LEGEND**



Sinkhole (depicted by last closed topographic contour)



B-Line Trail Extension



**B-LINE TRAIL EXTENSION  
KARST SURVEY  
BLOOMINGTON, IN**

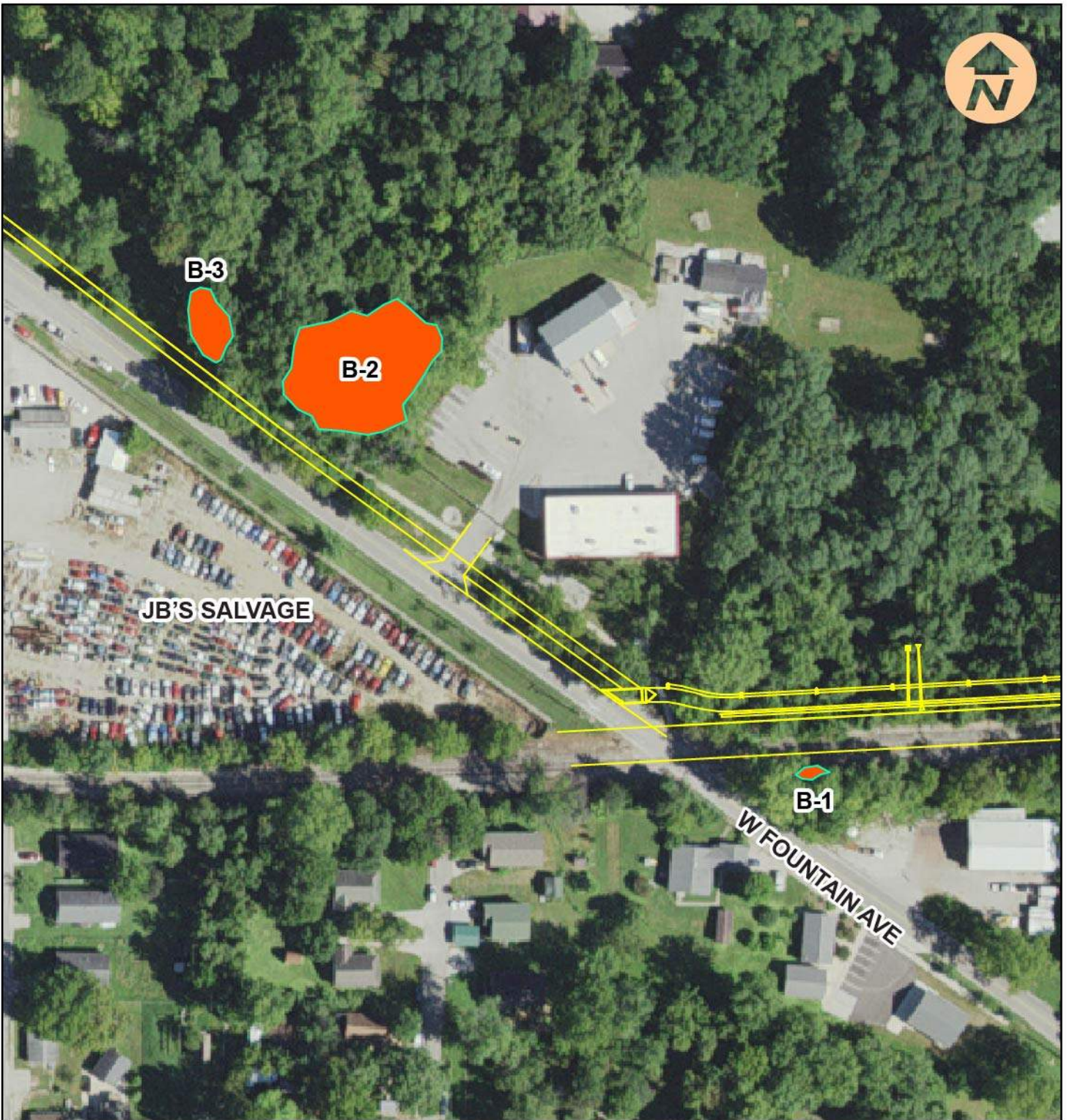
**KARST FEATURES**

hydrogeology inc.

FIGURE

**5**

Image Source: National Agriculture Imagery Program (NAIP), Farm Services Agency (FSA), U. S. Department of Agriculture (USDA), UIITS, Indiana Spatial Data Portal.



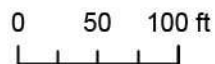
**LEGEND**



Sinkhole (depicted by last closed topographic contour)



B-Line Trail Extension Plans (Aztec Engineering)



**B-LINE TRAIL EXTENSION  
KARST SURVEY  
BLOOMINGTON, IN**

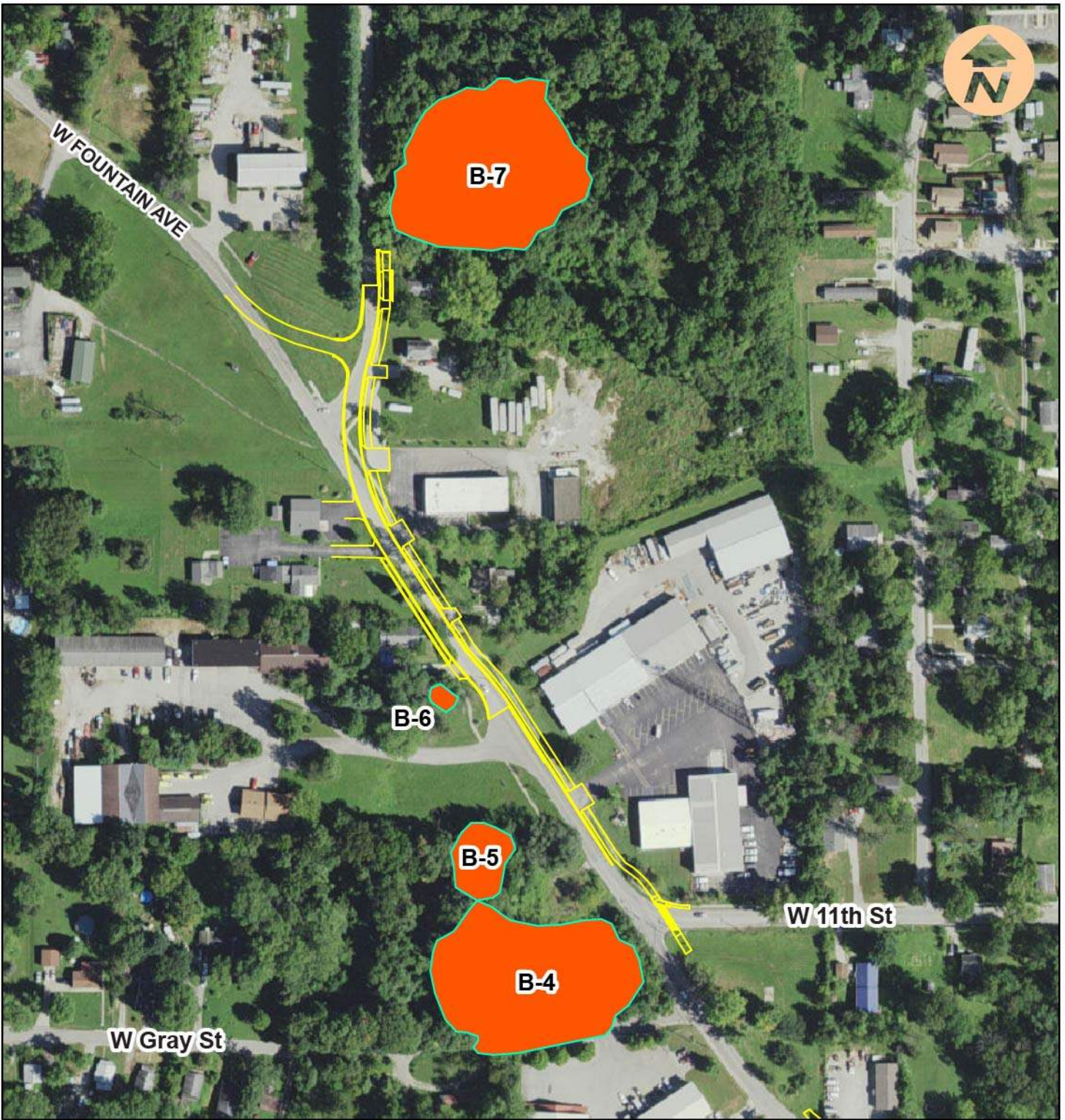
**KARST FEATURES  
B-1, B-2, B-3**

hydrogeology inc.

FIGURE

**6**

Image Source: National Agriculture Imagery Program (NAIP), Farm Services Agency (FSA), U. S. Department of Agriculture (USDA), UITS, Indiana Spatial Data Portal.



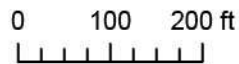
**LEGEND**



Sinkhole (depicted by last closed topographic contour)



B-Line Trail Extension Plans (Aztec Engineering)



**B-LINE TRAIL EXTENSION  
KARST SURVEY  
BLOOMINGTON, IN**

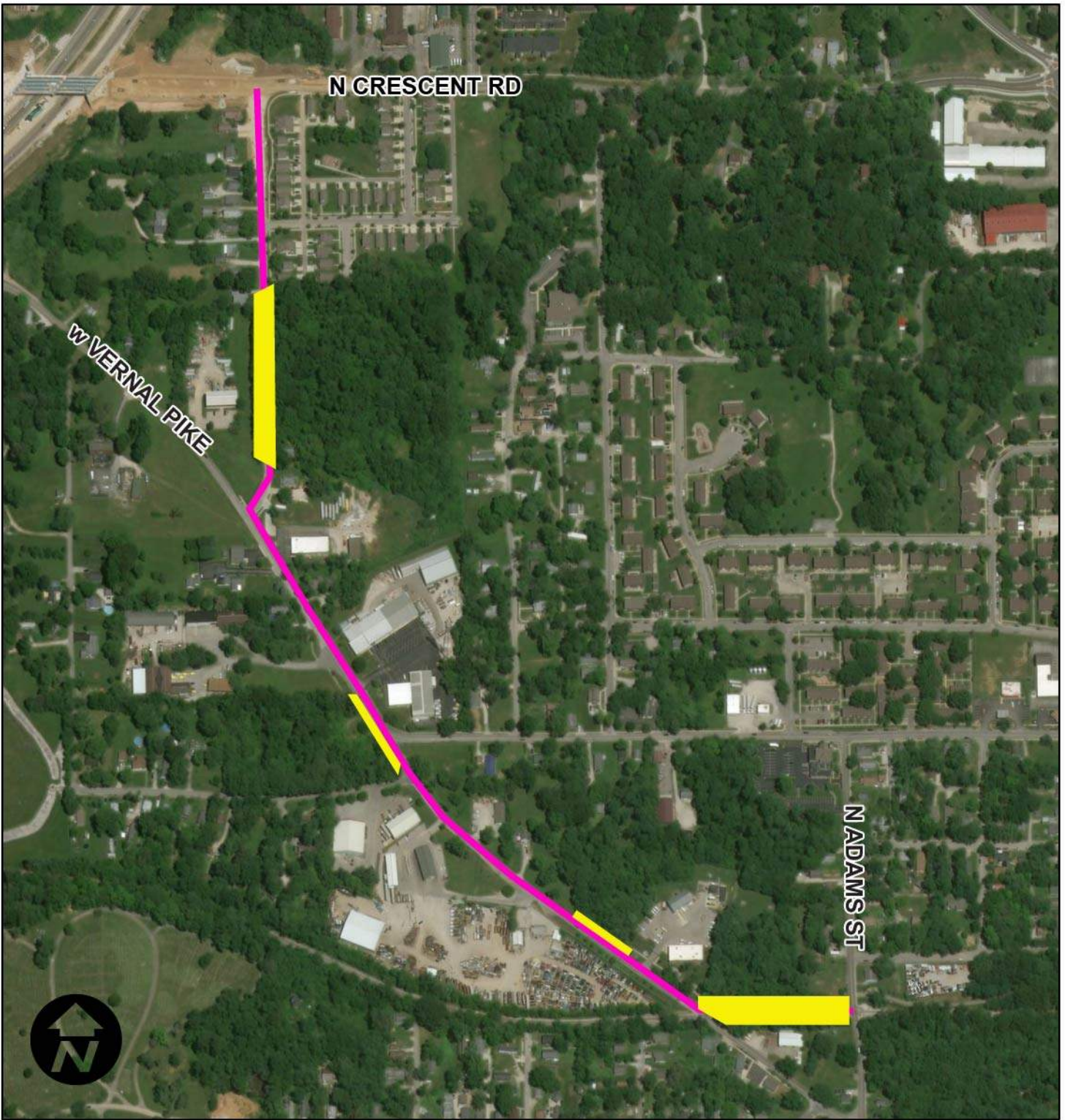
**KARST FEATURES  
B-4, B-5, B-6, B-7**

hydrogeology inc.

FIGURE

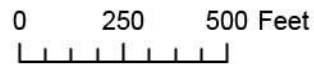
**7**

Image Source: National Agriculture Imagery Program (NAIP), Farm Services Agency (FSA), U. S. Department of Agriculture (USDA), UITS, Indiana Spatial Data Portal.



**LEGEND**

- Vegetated Areas**
- B-Line Trail Extension**



**B-LINE TRAIL EXTENSION  
KARST SURVEY  
BLOOMINGTON, IN**

**VEGETATED AREAS**

**hydrogeology inc.**

FIGURE  
**8**

<p><b>Feature Designation:</b> B-1</p>	
<p><b>Coordinates (UTM meters):</b> 538781E, 4335813N</p>	
<p><b>Photograph Date:</b> 3-6-2018</p>	
<p><b>Comments:</b> Sinkhole with no throat or bedrock present. Sinkhole is approximately 20 ft long by 11 ft wide by 2 ft deep.</p>	
<p><b>Recommended treatment:</b> To be determined.</p>	

<p><b>Feature Designation:</b> B-2</p>	
<p><b>Coordinates (UTM meters):</b> 538664E, 4335920N</p>	
<p><b>Photograph Date:</b> 3-6-2018</p>	
<p><b>Comments:</b> Sinkhole with no throat or bedrock present. Sinkhole is approximately 130 ft long by 105 ft wide by 4 ft deep. The sinkhole was water filled at the time of field inspection.</p>	
<p><b>Recommended treatment:</b> To be determined.</p>	


<b>Feature Designation:</b> B-3
<b>Coordinates (UTM meters):</b> 538625E, 4335930N
<b>Photograph Date:</b> 3-6-2018
<b>Comments:</b> Sinkhole with no throat or bedrock present. Sinkhole is approximately 65 ft long by 35 ft wide by 4 ft deep.
<b>Recommended treatment:</b> To be determined.




<b>Feature Designation:</b> B-4
<b>Coordinates (UTM meters):</b> 538365E,4336071N
<b>Photograph Date:</b> 3-6-2018
<b>Comments:</b> Sinkhole with swallet. Sinkhole is approximately 315 ft long by 235 ft wide by 16 ft deep. Would be a suitable dye injection location.
<b>Recommended treatment:</b> To be determined.





<p><b>Feature Designation:</b> B-5</p>	
<p><b>Coordinates (UTM meters):</b> 538359E, 4336126N</p>	
<p><b>Photograph Date:</b> 3-6-2018</p>	
<p><b>Comments:</b> Sinkhole with no throat or bedrock present. Sinkhole is approximately 110 ft long by 80 ft wide by 6 ft deep.</p>	
<p><b>Recommended treatment:</b> To be determined.</p>	

<p><b>Feature Designation:</b> B-6</p>	
<p><b>Coordinates (UTM meters):</b> 538341E, 4336197N</p>	
<p><b>Photograph Date:</b> 3-6-2018</p>	
<p><b>Comments:</b> Sinkhole with no throat or bedrock present. Sinkhole is approximately 40 ft long by 25 ft wide by 2 ft deep.</p>	
<p><b>Recommended treatment:</b> To be determined.</p>	

**Feature Designation:**

B-7

**Coordinates (UTM meters):**

538359E, 4336447N

**Photograph Date:** 3-6-2018


**Comments:**

Sinkhole with no throat or bedrock present. Sinkhole is approximately 310 ft long by 275 ft wide by 16 ft deep.

**Recommended treatment:**

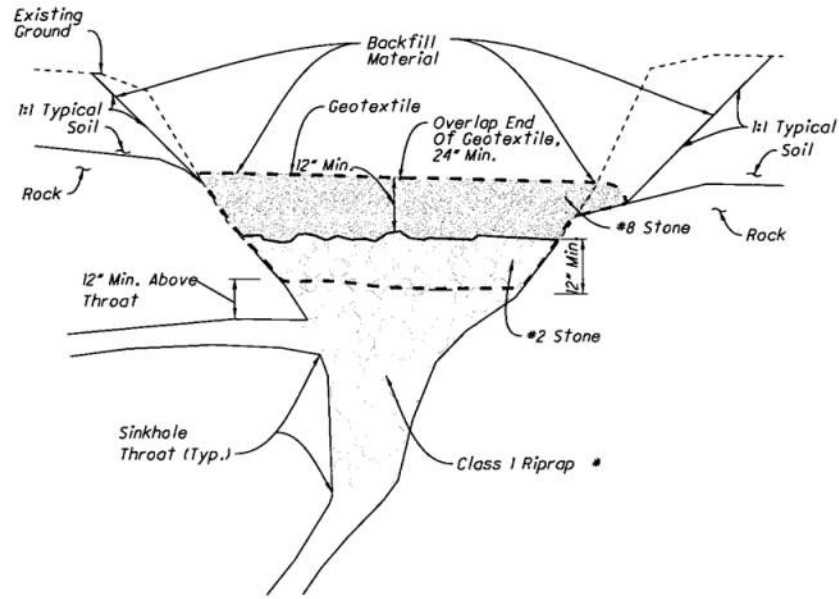
To be determined.



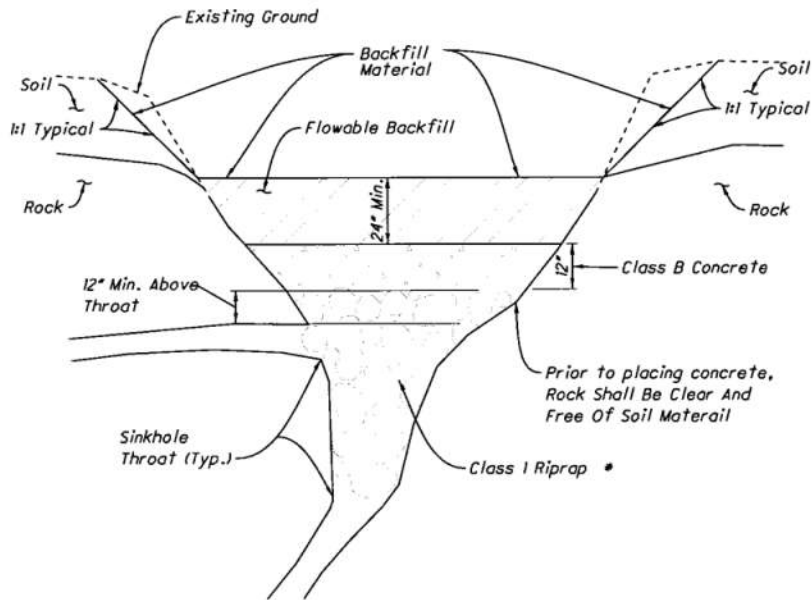
<p><b>Feature Designation:</b> Closed Depression (non-karst)</p>	
<p><b>Coordinates (UTM meters):</b> 538782E, 4335604N</p>	
<p><b>Photograph Date:</b> 4-18-2019</p>	
<p><b>Comments:</b> Ground surface within closed depression. No signs of soil piping or karst development.</p>	
<p><b>Recommended treatment:</b> None</p>	

<p><b>Feature Designation:</b> Closed Depression (non-karst)</p>	
<p><b>Coordinates (UTM meters):</b> 538782E, 4335604N</p>	
<p><b>Photograph Date:</b> 4-18-2019</p>	
<p><b>Comments:</b> Drainage box on southern end of the closed depression. Transmits surface run-off from north side of railroad bed to south side of railroad bed.</p>	
<p><b>Recommended treatment:</b> None.</p>	

## Appendix B - Karst Feature Treatment Technical Specifications



Sinkhole Repair - Aggregate Cap  
N.T.S.



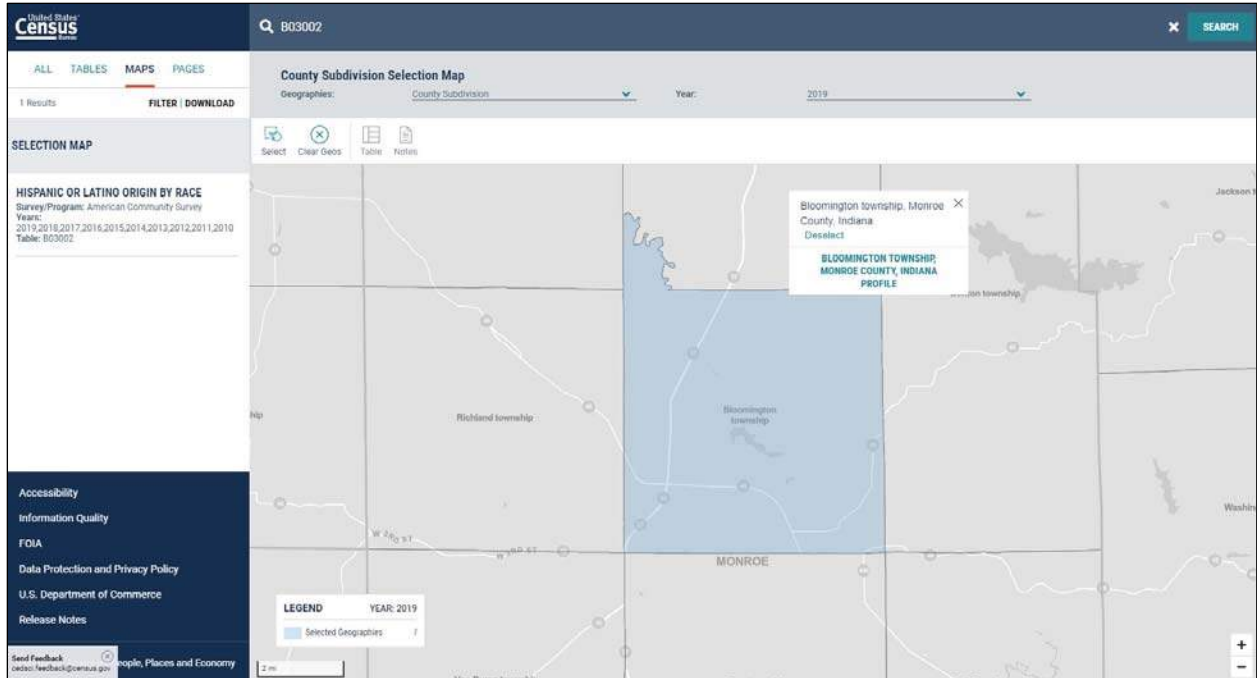
Sinkhole Repair - Concrete Cap  
N.T.S.

**NOTE:** This Appendix B is part of the Karst Feature Survey.

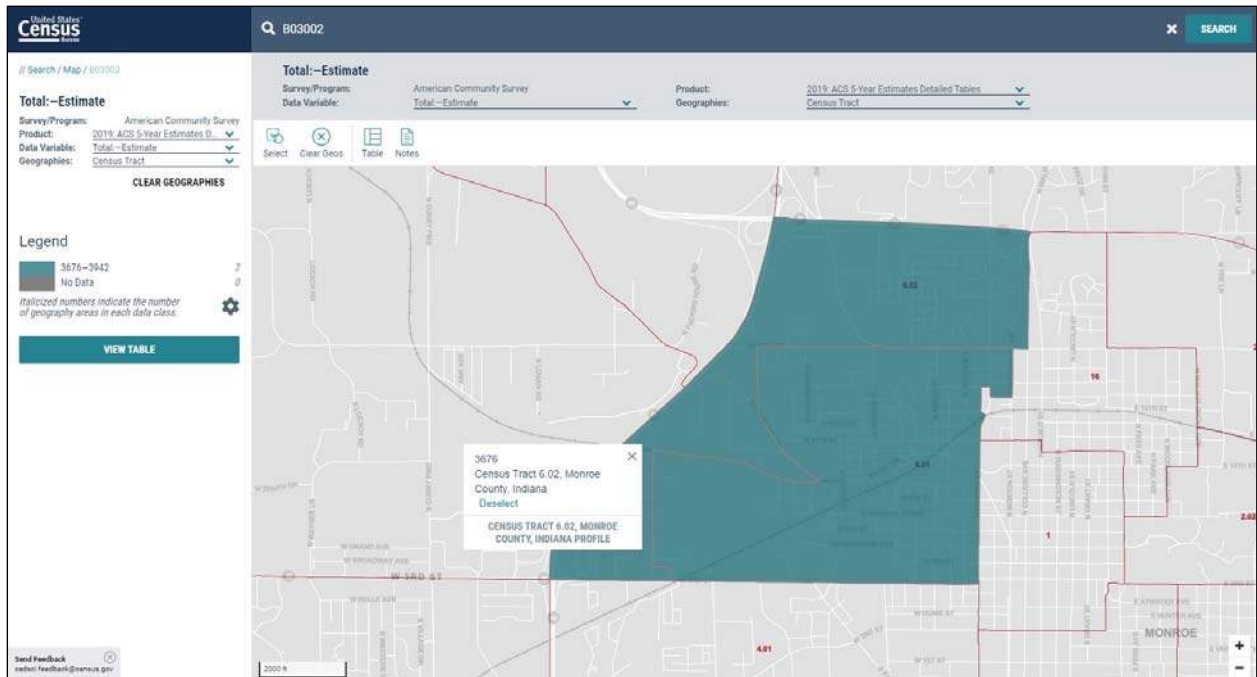
**Land and Water Conservation Fund (LWCF) County Property List for Indiana (Last Updated July 2020)**

ProjectNumber	SubProjectCode	County	Property
1800363	1800363T	Monroe	Allens Creek SRA
1800232	1800232	Monroe	Allens Creek State Recreation Area, Monroe Reservoir
1800423	1800423	Monroe	Bryan Park & Pool
1800190	1800190A	Monroe	Cascades Community Park
1800158	1800158	Monroe	Crestmont Park
1800026	1800026	Monroe	Fairfax Beach & SRA - Monroe Reservoir
1800039	1800039	Monroe	Fairfax Beach & State Recreation Area, Monroe Reservoir
1800118	1800118E	Monroe	Fairfax SRA
1800490	1800490	Monroe	Jackson Creek County Park
1800129	1800129	Monroe	Karst Farm Park
1800084	1800084	Monroe	Moore's Creek State Recreation Area, Monroe Reservoir
1800190	1800190B	Monroe	Park Ridge East Park
1800190	1800190C	Monroe	Park Ridge West Park
1800160	1800160	Monroe	Park Square Park (Highland Village Park)
1800171	1800171W	Monroe	Paynetown SRA
1800033	1800033	Monroe	Paynetown SRA - Monroe Reservoir
1800157	1800157	Monroe	Southeast Park
1800487	1800487	Monroe	Thomson Park
1800504	1800504	Monroe	Thomson Park
1800509	1800509	Monroe	Thomson Park
1800572	1800572	Monroe	Will Detmer Park
1800190	1800190D	Monroe	Winslow Sports Complex

\*Park names may have changed. If acquisition of publically owned land or impacts to publically owned land is anticipated, coordination with IDNR, Division of Outdoor Recreation, should occur.



**Map of COC: Bloomington Township**



**Map of AC 1: Census Tract 6.01; AC2: Census Tract 6.02**

# POVERTY STATUS IN THE PAST 12 MONTHS BY SEX BY AGE

Note: This is a modified view of the original table produced by the U.S. Census Bureau. This download or printed version may have missing information from the original table.

## Bloomington township, Monroe County, Indiana

Label	Estimate	Margin of Error
▼ Total:	32,280	±853
▼ Income in the past 12 months below poverty level:	14,266	±994
▼ Male:	7,478	±775
Under 5 years	241	±145
5 years	56	±62
6 to 11 years	242	±120
12 to 14 years	90	±68
15 years	63	±62
16 and 17 years	108	±57
18 to 24 years	5,069	±672
25 to 34 years	603	±274
35 to 44 years	311	±126
45 to 54 years	276	±127
55 to 64 years	307	±135
65 to 74 years	76	±55
75 years and over	36	±38
▼ Female:	6,788	±671
Under 5 years	202	±93
5 years	25	±27
6 to 11 years	185	±95
12 to 14 years	146	±93
15 years	36	±52
16 and 17 years	45	±37
18 to 24 years	4,413	±532
25 to 34 years	880	±208
35 to 44 years	275	±102
45 to 54 years	252	±110
55 to 64 years	205	±120
65 to 74 years	73	±57

# POVERTY STATUS IN THE PAST 12 MONTHS BY SEX BY AGE

Note: This is a modified view of the original table produced by the U.S. Census Bureau. This download or printed version may have missing information from the original table.

## Bloomington township, Monroe County, Indiana

Label	Estimate	Margin of Error
▼ Total:	32,280	±853
▼ Income in the past 12 months below poverty level:	14,266	±994
▶ Male:	7,478	±775
▼ Female:	6,788	±671
Under 5 years	202	±93
5 years	25	±27
6 to 11 years	185	±95
12 to 14 years	146	±93
15 years	36	±52
16 and 17 years	45	±37
18 to 24 years	4,413	±532
25 to 34 years	880	±208
35 to 44 years	275	±102
45 to 54 years	252	±110
55 to 64 years	205	±120
65 to 74 years	73	±57
75 years and over	51	±35
▼ Income in the past 12 months at or above poverty level:	18,014	±953
▼ Male:	9,293	±639
Under 5 years	395	±148
5 years	7	±11
6 to 11 years	341	±103
12 to 14 years	253	±113
15 years	77	±50
16 and 17 years	125	±69
18 to 24 years	1,387	±304
25 to 34 years	2,478	±335
35 to 44 years	1,123	±218
45 to 54 years	837	±171



# POVERTY STATUS IN THE PAST 12 MONTHS BY SEX BY AGE

Note: This is a modified view of the original table produced by the U.S. Census Bureau. This download or printed version may have missing information from the original table.

## Bloomington township, Monroe County, Indiana

Label	Estimate	Margin of Error
▼ Total:	32,280	±853
▼ Income in the past 12 months below poverty level:	14,266	±994
▶ Male:	7,478	±775
▶ Female:	6,788	±671
▼ Income in the past 12 months at or above poverty level:	18,014	±953
▼ Male:	9,293	±639
Under 5 years	395	±148
5 years	7	±11
6 to 11 years	341	±103
12 to 14 years	253	±113
15 years	77	±50
16 and 17 years	125	±69
18 to 24 years	1,387	±304
25 to 34 years	2,478	±335
35 to 44 years	1,123	±218
45 to 54 years	837	±171
55 to 64 years	896	±138
65 to 74 years	715	±161
75 years and over	659	±130
▼ Female:	8,721	±577
Under 5 years	333	±107
5 years	85	±59
6 to 11 years	459	±135
12 to 14 years	155	±81
15 years	84	±62
16 and 17 years	125	±103
18 to 24 years	1,011	±277
25 to 34 years	1,603	±273
35 to 44 years	1,166	±223

# POVERTY STATUS IN THE PAST 12 MONTHS BY SEX BY AGE

Note: This is a modified view of the original table produced by the U.S. Census Bureau. This download or printed version may have missing information from the original table.

## Bloomington township, Monroe County, Indiana

Label	Estimate	Margin of Error
▼ Total:	32,280	±853
▼ Income in the past 12 months below poverty level:	14,266	±994
▶ Male:	7,478	±775
▶ Female:	6,788	±671
▼ Income in the past 12 months at or above poverty level:	18,014	±953
▶ Male:	9,293	±639
▼ Female:	8,721	±577
Under 5 years	333	±107
5 years	85	±59
6 to 11 years	459	±135
12 to 14 years	155	±81
15 years	84	±62
16 and 17 years	125	±103
18 to 24 years	1,011	±277
25 to 34 years	1,603	±273
35 to 44 years	1,166	±223
45 to 54 years	751	±154
55 to 64 years	1,053	±171
65 to 74 years	979	±138
75 years and over	917	±198

# POVERTY STATUS IN THE PAST 12 MONTHS BY SEX BY AGE

Note: This is a modified view of the original table produced by the U.S. Census Bureau. This download or printed version may have missing information from the original table.

Label	Census Tract 6.01, Monroe County, Indiana		Census Tract 6.02, Monroe County, Indiana	
	Estimate	Margin of Error	Estimate	Margin of Error
▼ Total:	3,924	±350	3,635	±365
▼ Income in the past 12 months below poverty level:	1,812	±378	1,652	±344
▼ Male:	819	±259	754	±211
Under 5 years	85	±62	33	±30
5 years	0	±12	14	±20
6 to 11 years	142	±98	55	±46
12 to 14 years	43	±47	20	±33
15 years	30	±50	23	±33
16 and 17 years	48	±50	17	±24
18 to 24 years	157	±94	334	±151
25 to 34 years	124	±87	42	±41
35 to 44 years	49	±38	33	±30
45 to 54 years	54	±44	60	±64
55 to 64 years	47	±36	104	±67
65 to 74 years	40	±40	19	±29
75 years and over	0	±12	0	±12
▼ Female:	993	±240	898	±311
Under 5 years	72	±59	69	±56
5 years	7	±10	0	±12
6 to 11 years	54	±53	17	±26

# POVERTY STATUS IN THE PAST 12 MONTHS BY SEX BY AGE

Note: This is a modified view of the original table produced by the U.S. Census Bureau. This download or printed version may have missing information from the original table.

	Census Tract 6.01, Monroe County, Indiana		Census Tract 6.02, Monroe County, Indiana	
Label	Estimate	Margin of Error	Estimate	Margin of Error
▼ Total:	3,924	±350	3,635	±365
▼ Income in the past 12 months below poverty level:	1,812	±378	1,652	±344
▶ Male:	819	±259	754	±211
▼ Female:	993	±240	898	±311
Under 5 years	72	±59	69	±56
5 years	7	±10	0	±12
6 to 11 years	54	±53	17	±26
12 to 14 years	34	±26	0	±12
15 years	4	±7	2	±4
16 and 17 years	14	±18	11	±16
18 to 24 years	205	±103	595	±286
25 to 34 years	221	±103	87	±61
35 to 44 years	141	±72	60	±55
45 to 54 years	85	±52	43	±42
55 to 64 years	101	±94	7	±11
65 to 74 years	42	±46	7	±11
75 years and over	13	±14	0	±12
▼ Income in the past 12 months at or above poverty level:	2,112	±356	1,983	±305
▼ Male:	1,135	±223	1,069	±198
Under 5 years	42	±38	8	±13

# POVERTY STATUS IN THE PAST 12 MONTHS BY SEX BY AGE

Note: This is a modified view of the original table produced by the U.S. Census Bureau. This download or printed version may have missing information from the original table.

	Census Tract 6.01, Monroe County, Indiana		Census Tract 6.02, Monroe County, Indiana	
Label	Estimate	Margin of Error	Estimate	Margin of Error
▼ Total:	3,924	±350	3,635	±365
▼ Income in the past 12 months below poverty level:	1,812	±378	1,652	±344
▶ Male:	819	±259	754	±211
▶ Female:	993	±240	898	±311
▼ Income in the past 12 months at or above poverty level:	2,112	±356	1,983	±305
▼ Male:	1,135	±223	1,069	±198
Under 5 years	42	±38	8	±13
5 years	0	±12	0	±12
6 to 11 years	27	±31	18	±20
12 to 14 years	6	±10	19	±28
15 years	17	±20	0	±12
16 and 17 years	6	±9	15	±18
18 to 24 years	102	±64	270	±121
25 to 34 years	338	±139	341	±133
35 to 44 years	173	±80	100	±60
45 to 54 years	113	±51	131	±67
55 to 64 years	133	±53	51	±37
65 to 74 years	137	±72	90	±42
75 years and over	41	±34	26	±26
▼ Female:	977	±213	914	±178

# POVERTY STATUS IN THE PAST 12 MONTHS BY SEX BY AGE

Note: This is a modified view of the original table produced by the U.S. Census Bureau. This download or printed version may have missing information from the original table.

	Census Tract 6.01, Monroe County, Indiana		Census Tract 6.02, Monroe County, Indiana	
Label	Estimate	Margin of Error	Estimate	Margin of Error
▼ Total:	3,924	±350	3,635	±365
▼ Income in the past 12 months below poverty level:	1,812	±378	1,652	±344
▶ Male:	819	±259	754	±211
▶ Female:	993	±240	898	±311
▼ Income in the past 12 months at or above poverty level:	2,112	±356	1,983	±305
▶ Male:	1,135	±223	1,069	±198
▼ Female:	977	±213	914	±178
Under 5 years	54	±38	15	±17
5 years	36	±41	12	±20
6 to 11 years	20	±30	11	±17
12 to 14 years	34	±31	41	±47
15 years	0	±12	29	±41
16 and 17 years	0	±12	0	±12
18 to 24 years	130	±103	149	±116
25 to 34 years	246	±93	158	±64
35 to 44 years	178	±80	176	±93
45 to 54 years	100	±52	100	±53
55 to 64 years	93	±46	131	±55
65 to 74 years	86	±33	54	±44
75 years and over	0	±12	38	±36

# Table Notes

## POVERTY STATUS IN THE PAST 12 MONTHS BY SEX BY AGE

**Survey/Program:**

American Community Survey

**Universe:**

Population for whom poverty status is determined

**Year:**

2019

**Estimates:**

5-Year

**Table ID:**

B17001

Although the American Community Survey (ACS) produces population, demographic and housing unit estimates, it is the Census Bureau's Population Estimates Program that produces and disseminates the official estimates of the population for the nation, states, counties, cities, and towns and estimates of housing units for states and counties.

Source: U.S. Census Bureau, 2015-2019 American Community Survey 5-Year Estimates

Data are based on a sample and are subject to sampling variability. The degree of uncertainty for an estimate arising from sampling variability is represented through the use of a margin of error. The value shown here is the 90 percent margin of error. The margin of error can be interpreted roughly as providing a 90 percent probability that the interval defined by the estimate minus the margin of error and the estimate plus the margin of error (the lower and upper confidence bounds) contains the true value. In addition to sampling variability, the ACS estimates are subject to nonsampling error (for a discussion of nonsampling variability, see ACS Technical Documentation). The effect of nonsampling error is not represented in these tables.

The 2015-2019 American Community Survey (ACS) data generally reflect the September 2018 Office of Management and Budget (OMB) delineations of metropolitan and micropolitan statistical areas. In certain instances, the names, codes, and boundaries of the principal cities shown in ACS tables may differ from the OMB delineation lists due to differences in the effective dates of the geographic entities.

Estimates of urban and rural populations, housing units, and characteristics reflect boundaries of urban areas defined based on Census 2010 data. As a result, data for urban and rural areas from the ACS do not necessarily reflect the results of ongoing urbanization.

**Explanation of Symbols:**

An "\*\*" entry in the margin of error column indicates that either no sample observations or too few sample observations were available to compute a standard error and thus the margin of error. A statistical test is not appropriate.

An "-" entry in the estimate column indicates that either no sample observations or too few sample observations were available to compute an estimate, or a ratio of medians cannot be calculated because one or both of the median estimates falls in the lowest interval or upper interval of an open-ended distribution, or the margin of error associated with a median was larger than the median itself.

An "-" following a median estimate means the median falls in the lowest interval of an open-ended distribution.

An "+" following a median estimate means the median falls in the upper interval of an open-ended distribution.

An "\*\*\*" entry in the margin of error column indicates that the median falls in the lowest interval or upper interval of an open-ended distribution. A statistical test is not appropriate.

An "\*\*\*\*\*" entry in the margin of error column indicates that the estimate is controlled. A statistical test for sampling variability is not appropriate.

An "N" entry in the estimate and margin of error columns indicates that data for this geographic area cannot be displayed because the number of sample cases is too small.

An "(X)" means that the estimate is not applicable or not available.

Supporting documentation on code lists, subject definitions, data accuracy, and statistical testing can be found on the American Community Survey website in the Technical Documentation section.

Sample size and data quality measures (including coverage rates, allocation rates, and response rates) can be found on the American Community Survey website in the Methodology section.



# HISPANIC OR LATINO ORIGIN BY RACE

Note: This is a modified view of the original table produced by the U.S. Census Bureau. This download or printed version may have missing information from the original table.

## Bloomington township, Monroe County, Indiana

Label	Estimate	Margin of Error
▼ Total:	46,349	±37
▼ Not Hispanic or Latino:	44,435	±275
White alone	36,492	±631
Black or African American alone	1,550	±303
American Indian and Alaska Native alone	64	±60
Asian alone	4,410	±421
Native Hawaiian and Other Pacific Islander alone	15	±21
Some other race alone	39	±34
▼ Two or more races:	1,865	±385
Two races including Some other race	30	±38
Two races excluding Some other race, and three or more races	1,835	±385
▼ Hispanic or Latino:	1,914	±268
White alone	1,605	±271
Black or African American alone	21	±33
American Indian and Alaska Native alone	0	±25
Asian alone	0	±25
Native Hawaiian and Other Pacific Islander alone	0	±25
Some other race alone	167	±78
▼ Two or more races:	121	±78
Two races including Some other race	0	±25
Two races excluding Some other race, and three or more races	121	±78

# HISPANIC OR LATINO ORIGIN BY RACE

**Note: This is a modified view of the original table produced by the U.S. Census Bureau. This download or printed version may have missing information from the original table.**

## Census Tract 6.01, Monroe County, Indiana

Label	Estimate	Margin of Error
▼ Total:	3,942	±355
▼ Not Hispanic or Latino:	3,840	±352
White alone	3,041	±357
Black or African American alone	310	±199
American Indian and Alaska Native alone	32	±55
Asian alone	148	±108
Native Hawaiian and Other Pacific Islander alone	0	±12
Some other race alone	0	±12
▼ Two or more races:	309	±217
Two races including Some other race	0	±12
Two races excluding Some other race, and three or more races	309	±217
▼ Hispanic or Latino:	102	±65
White alone	81	±67
Black or African American alone	0	±12
American Indian and Alaska Native alone	0	±12
Asian alone	0	±12
Native Hawaiian and Other Pacific Islander alone	0	±12
Some other race alone	21	±24
▼ Two or more races:	0	±12
Two races including Some other race	0	±12
Two races excluding Some other race, and three or more races	0	±12

# HISPANIC OR LATINO ORIGIN BY RACE

**Note: This is a modified view of the original table produced by the U.S. Census Bureau. This download or printed version may have missing information from the original table.**

## Census Tract 6.02, Monroe County, Indiana

Label	Estimate	Margin of Error
▼ Total:	3,676	±368
▼ Not Hispanic or Latino:	3,525	±367
White alone	2,771	±362
Black or African American alone	228	±137
American Indian and Alaska Native alone	0	±12
Asian alone	249	±183
Native Hawaiian and Other Pacific Islander alone	0	±12
Some other race alone	10	±17
▼ Two or more races:	267	±144
Two races including Some other race	0	±12
Two races excluding Some other race, and three or more races	267	±144
▼ Hispanic or Latino:	151	±90
White alone	78	±53
Black or African American alone	21	±33
American Indian and Alaska Native alone	0	±12
Asian alone	0	±12
Native Hawaiian and Other Pacific Islander alone	0	±12
Some other race alone	9	±11
▼ Two or more races:	43	±54
Two races including Some other race	0	±12
Two races excluding Some other race, and three or more races	43	±54

# Table Notes

## HISPANIC OR LATINO ORIGIN BY RACE

**Survey/Program:**

American Community Survey

**Universe:**

Total population

**Year:**

2019

**Estimates:**

5-Year

**Table ID:**

B03002

Although the American Community Survey (ACS) produces population, demographic and housing unit estimates, it is the Census Bureau's Population Estimates Program that produces and disseminates the official estimates of the population for the nation, states, counties, cities, and towns and estimates of housing units for states and counties.

Source: U.S. Census Bureau, 2015-2019 American Community Survey 5-Year Estimates

Data are based on a sample and are subject to sampling variability. The degree of uncertainty for an estimate arising from sampling variability is represented through the use of a margin of error. The value shown here is the 90 percent margin of error. The margin of error can be interpreted roughly as providing a 90 percent probability that the interval defined by the estimate minus the margin of error and the estimate plus the margin of error (the lower and upper confidence bounds) contains the true value. In addition to sampling variability, the ACS estimates are subject to nonsampling error (for a discussion of nonsampling variability, see ACS Technical Documentation). The effect of nonsampling error is not represented in these tables.

The 2015-2019 American Community Survey (ACS) data generally reflect the September 2018 Office of Management and Budget (OMB) delineations of metropolitan and micropolitan statistical areas. In certain instances, the names, codes, and boundaries of the principal cities shown in ACS tables may differ from the OMB delineation lists due to differences in the effective dates of the geographic entities.

Estimates of urban and rural populations, housing units, and characteristics reflect boundaries of urban areas defined based on Census 2010 data. As a result, data for urban and rural areas from the ACS do not necessarily reflect the results of ongoing urbanization.

**Explanation of Symbols:**

An "\*\*\*" entry in the margin of error column indicates that either no sample observations or too few sample observations were available to compute a standard error and thus the margin of error. A statistical test is not appropriate.

An "-" entry in the estimate column indicates that either no sample observations or too few sample observations were available to compute an estimate, or a ratio of medians cannot be calculated because one or both of the median estimates falls in the lowest interval or upper interval of an open-ended distribution, or the margin of error associated with a median was larger than the median itself.

An "-" following a median estimate means the median falls in the lowest interval of an open-ended distribution.

An "+" following a median estimate means the median falls in the upper interval of an open-ended distribution.

An "\*\*\*\*" entry in the margin of error column indicates that the median falls in the lowest interval or upper interval of an open-ended distribution. A statistical test is not appropriate.

An "\*\*\*\*\*" entry in the margin of error column indicates that the estimate is controlled. A statistical test for sampling variability is not appropriate.

An "N" entry in the estimate and margin of error columns indicates that data for this geographic area cannot be displayed because the number of sample cases is too small.

An "(X)" means that the estimate is not applicable or not available.

Supporting documentation on code lists, subject definitions, data accuracy, and statistical testing can be found on the American Community Survey website in the Technical Documentation section.

Sample size and data quality measures (including coverage rates, allocation rates, and response rates) can be found on the American Community Survey website in the Methodology section.

**POVERTY STATUS IN THE PAST 12 MONTHS BY SEX BY AGE**

TABLE ID: B17001  
 SURVEY/PROGRAM: American Community Survey  
 PRODUCT: ACS 5-Year Estimates Detailed Tables

Note: The table shown may have been modified by user selections. Some information may be missing.

Label	Bloomington township, Monroe County, Indiana		Census Tract 6.01, Monroe County, Indiana		Census Tract 6.02, Monroe County, Indiana	
	Estimate	Margin of Error	Estimate	Margin of Error	Estimate	Margin of Error
Total:	32,280	±853	3,924	±350	3,635	±365
Income in the past 12 months below poverty level:	14,266	±994	1,812	±378	1,652	±344
Male:	7,478	±775	819	±259	754	±211
Under 5 years	241	±145	85	±62	33	±30
5 years	56	±62	0	±12	14	±20
6 to 11 years	242	±120	142	±98	55	±46
12 to 14 years	90	±68	43	±47	20	±33
15 years	63	±62	30	±50	23	±33
16 and 17 years	108	±57	48	±50	17	±24
18 to 24 years	5,069	±672	157	±94	334	±151
25 to 34 years	603	±274	124	±87	42	±41
35 to 44 years	311	±126	49	±38	33	±30
45 to 54 years	276	±127	54	±44	60	±64
55 to 64 years	307	±135	47	±36	104	±67
65 to 74 years	76	±55	40	±40	19	±29
75 years and over	36	±38	0	±12	0	±12
Female:	6,788	±671	993	±240	898	±311
Under 5 years	202	±93	72	±59	69	±56
5 years	25	±27	7	±10	0	±12
6 to 11 years	185	±95	54	±53	17	±26
12 to 14 years	146	±93	34	±26	0	±12
15 years	36	±52	4	±7	2	±4
16 and 17 years	45	±37	14	±18	11	±16
18 to 24 years	4,413	±532	205	±103	595	±286
25 to 34 years	880	±208	221	±103	87	±61
35 to 44 years	275	±102	141	±72	60	±55
45 to 54 years	252	±110	85	±52	43	±42
55 to 64 years	205	±120	101	±94	7	±11
65 to 74 years	73	±57	42	±46	7	±11
75 years and over	51	±35	13	±14	0	±12
Income in the past 12 months at or above poverty level:	18,014	±953	2,112	±356	1,983	±305
Male:	9,293	±639	1,135	±223	1,069	±198
Under 5 years	395	±148	42	±38	8	±13
5 years	7	±11	0	±12	0	±12
6 to 11 years	341	±103	27	±31	18	±20
12 to 14 years	253	±113	6	±10	19	±28
15 years	77	±50	17	±20	0	±12
16 and 17 years	125	±69	6	±9	15	±18
18 to 24 years	1,387	±304	102	±64	270	±121
25 to 34 years	2,478	±335	338	±139	341	±133
35 to 44 years	1,123	±218	173	±80	100	±60
45 to 54 years	837	±171	113	±51	131	±67
55 to 64 years	896	±138	133	±53	51	±37
65 to 74 years	715	±161	137	±72	90	±42
75 years and over	659	±130	41	±34	26	±26
Female:	8,721	±577	977	±213	914	±178
Under 5 years	333	±107	54	±38	15	±17
5 years	85	±59	36	±41	12	±20
6 to 11 years	459	±135	20	±30	11	±17
12 to 14 years	155	±81	34	±31	41	±47
15 years	84	±62	0	±12	29	±41
16 and 17 years	125	±103	0	±12	0	±12
18 to 24 years	1,011	±277	130	±103	149	±116
25 to 34 years	1,603	±273	246	±93	158	±64
35 to 44 years	1,166	±223	178	±80	176	±93
45 to 54 years	751	±154	100	±52	100	±53
55 to 64 years	1,053	±171	93	±46	131	±55
65 to 74 years	979	±138	86	±33	54	±44
75 years and over	917	±198	0	±12	38	±36

Percent Low-income  
 125 Percent of COC  
 Potential Low-income EJ Impact?

44.19  
 55.24

46.18  
 AC < 125% COC  
 No

45.45  
 AC < 125% COC  
 No

**HISPANIC OR LATINO ORIGIN BY RACE**

TABLE ID: B03002  
 SURVEY/PROGRAM: American Community Survey  
 PRODUCT: ACS 5-Year Estimates Detailed Tables

**Note: The table shown may have been modified by user selections. Some information may be missing.**

Label	Bloomington township, Monroe County, Indiana		Census Tract 6.01, Monroe County, Indiana		Census Tract 6.02, Monroe County, Indiana	
	Estimate	Margin of Error	Estimate	Margin of Error	Estimate	Margin of Error
Total:	46,349	±37	3,942	±355	3,676	±368
Not Hispanic or Latino:	44,435	±275	3,840	±352	3,525	±367
White alone	36,492	±631	3,041	±357	2,771	±362
Black or African American alone	1,550	±303	310	±199	228	±137
American Indian and Alaska Native alone	64	±60	32	±55	0	±12
Asian alone	4,410	±421	148	±108	249	±183
Native Hawaiian and Other Pacific Islander alone	15	±21	0	±12	0	±12
Some other race alone	39	±34	0	±12	10	±17
Two or more races:	1,865	±385	309	±217	267	±144
Two races including Some other race	30	±38	0	±12	0	±12
Two races excluding Some other race, and three or more races	1,835	±385	309	±217	267	±144
Hispanic or Latino:	1,914	±268	102	±65	151	±90
White alone	1,605	±271	81	±67	78	±53
Black or African American alone	21	±33	0	±12	21	±33
American Indian and Alaska Native alone	0	±25	0	±12	0	±12
Asian alone	0	±25	0	±12	0	±12
Native Hawaiian and Other Pacific Islander alone	0	±25	0	±12	0	±12
Some other race alone	167	±78	21	±24	9	±11
Two or more races:	121	±78	0	±12	43	±54
Two races including Some other race	0	±25	0	±12	0	±12
Two races excluding Some other race, and three or more races	121	±78	0	±12	43	±54

Number Non-white/minority	9,857	901	905
Percent Non-white/minority	21.27	22.86	24.62
125 Percent of COC	26.58	AC < 125% COC	AC < 125% COC
Potential Minority EJ Impact?		No	No