

2022

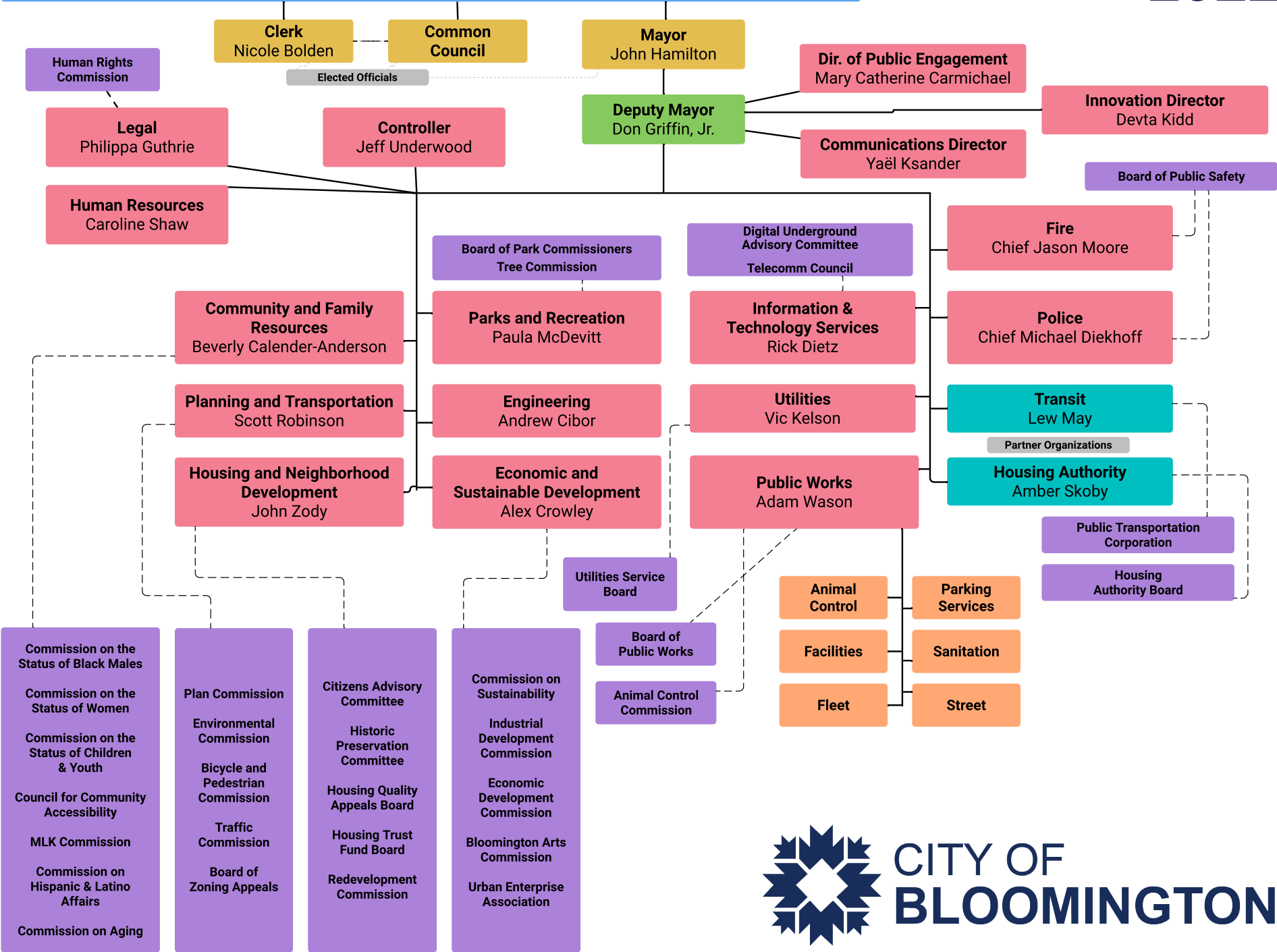
ORGANIZATIONAL CHARTS

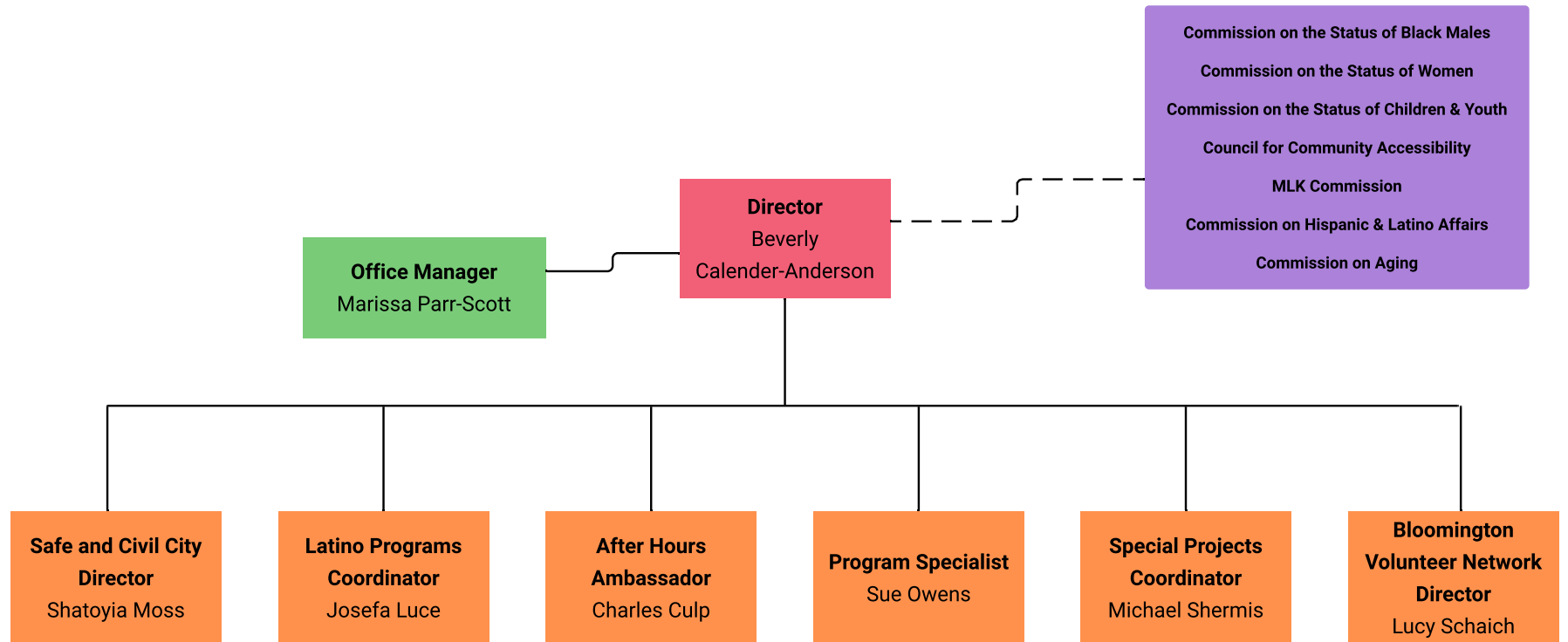


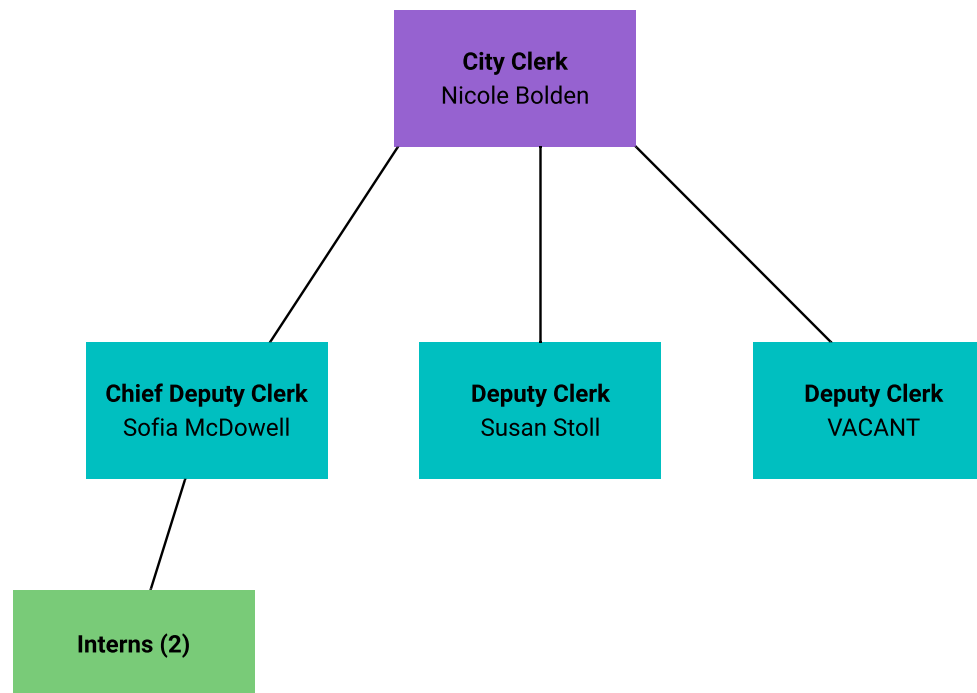
CITY OF
BLOOMINGTON

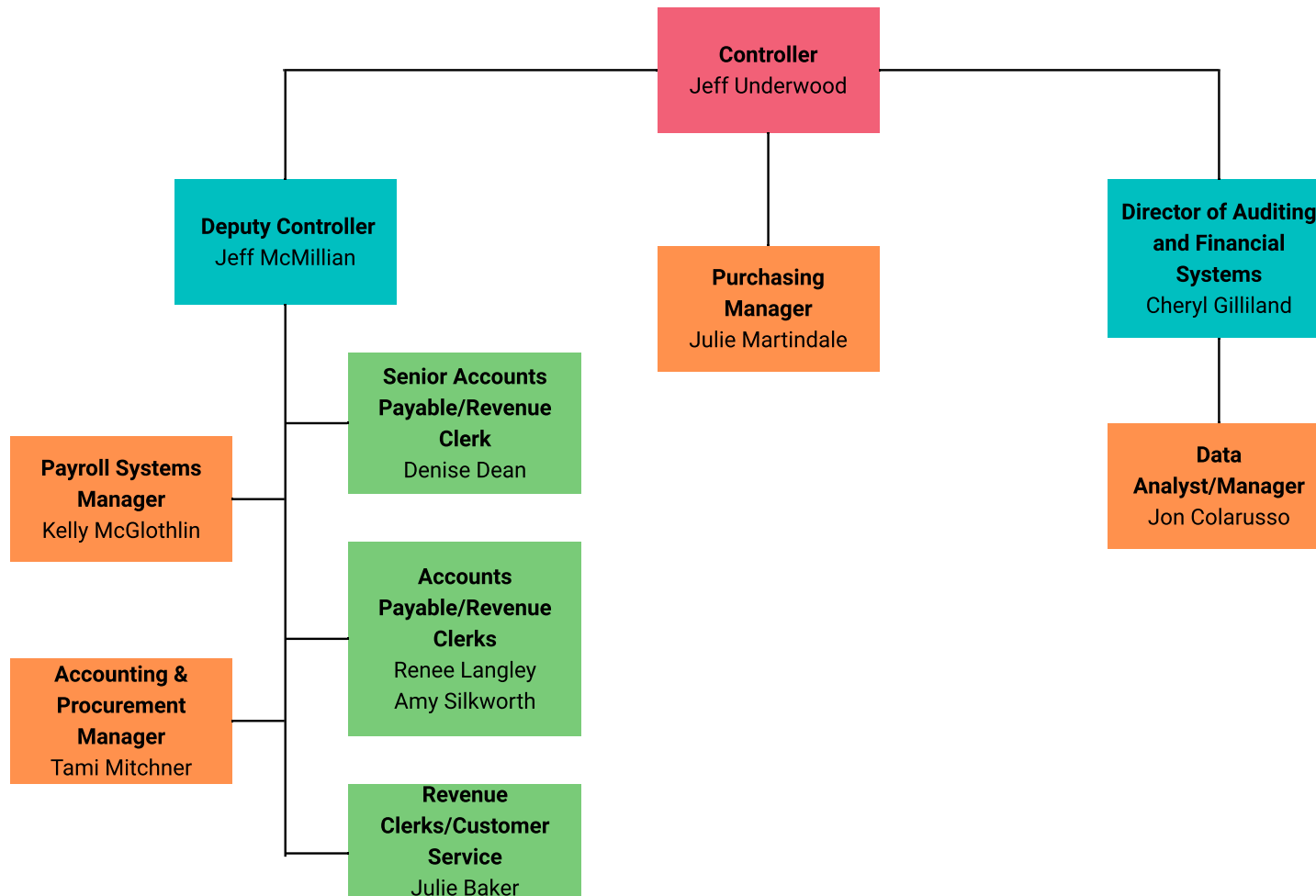
CITY OF BLOOMINGTON RESIDENTS

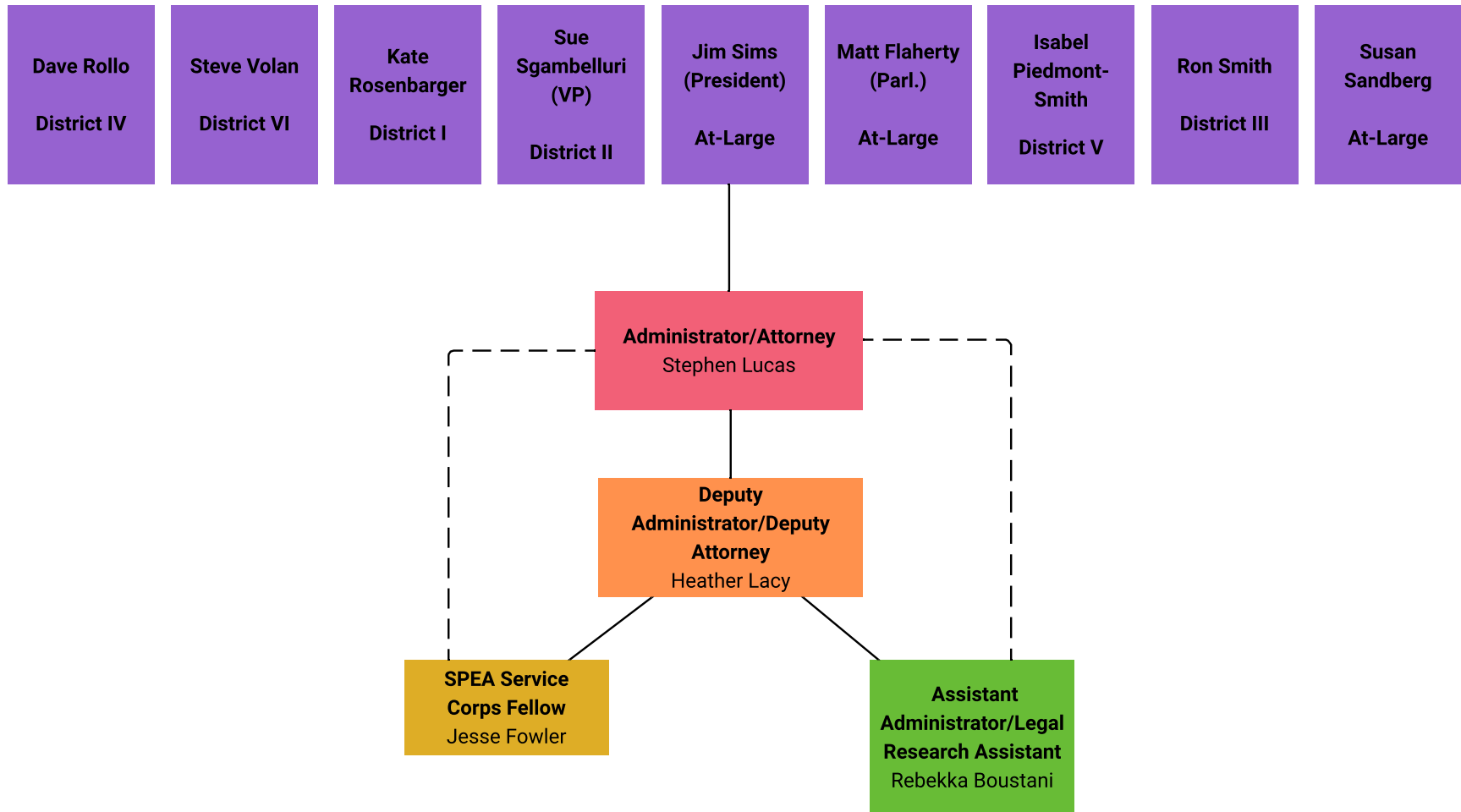
2022



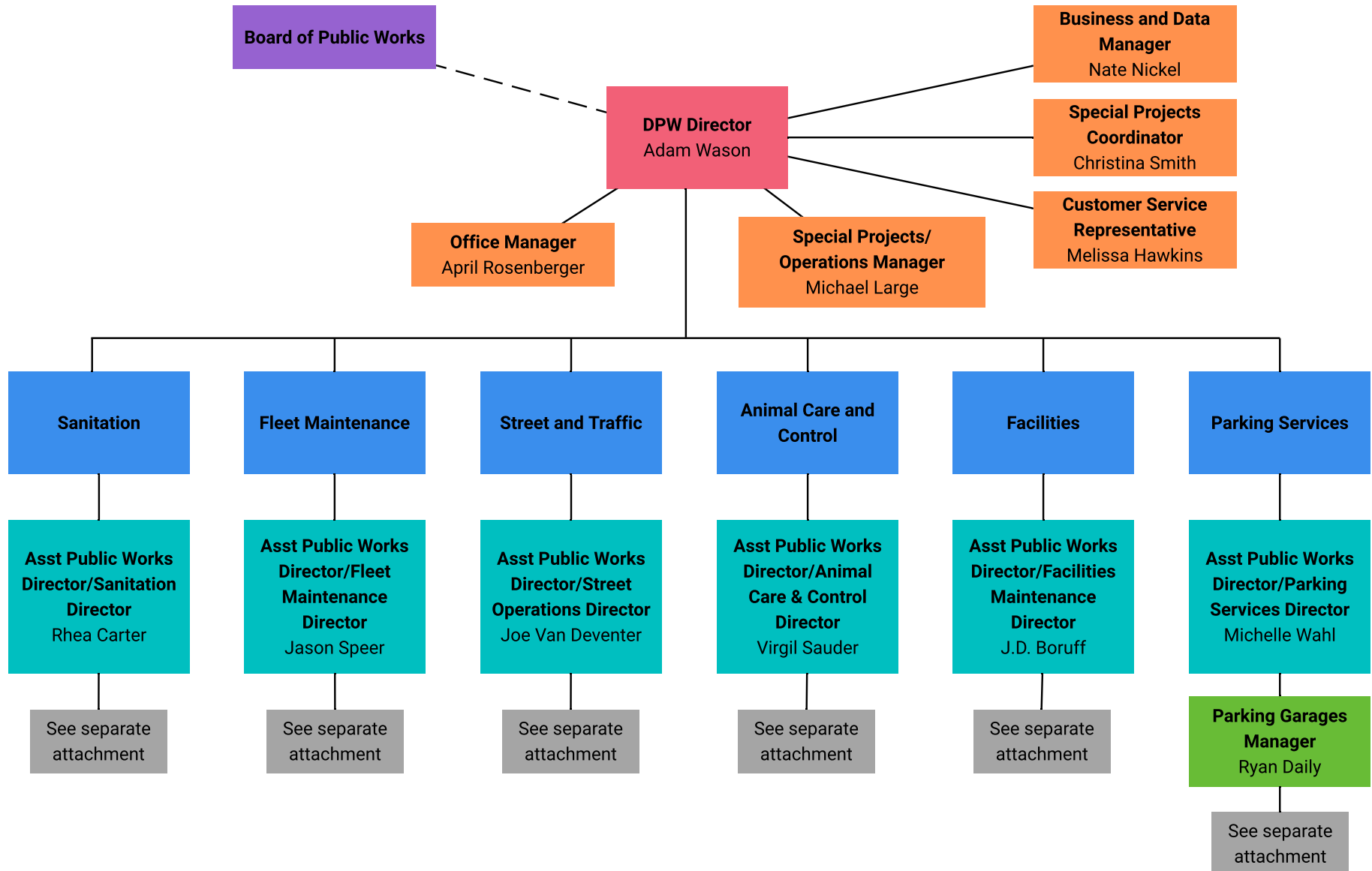


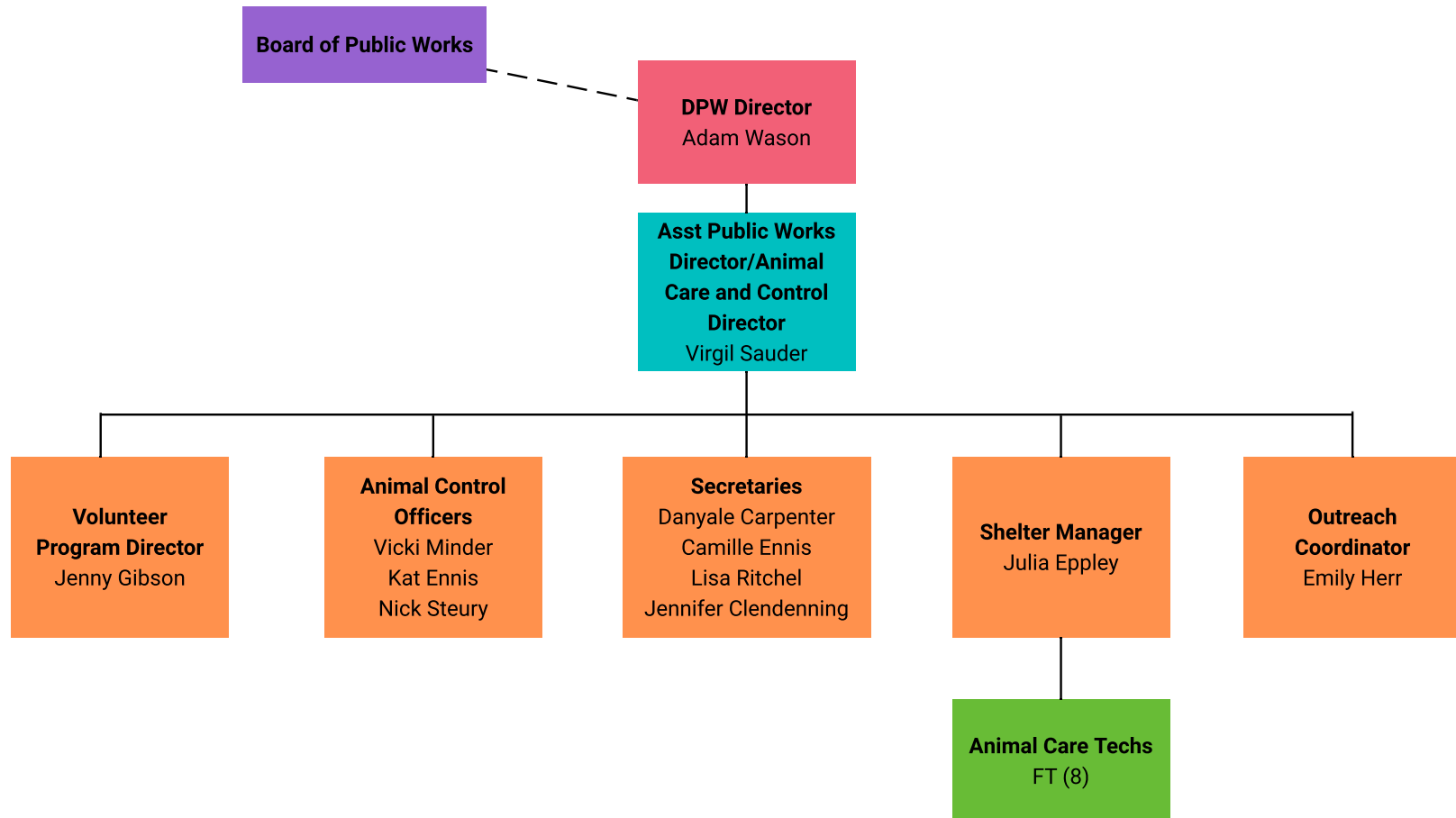


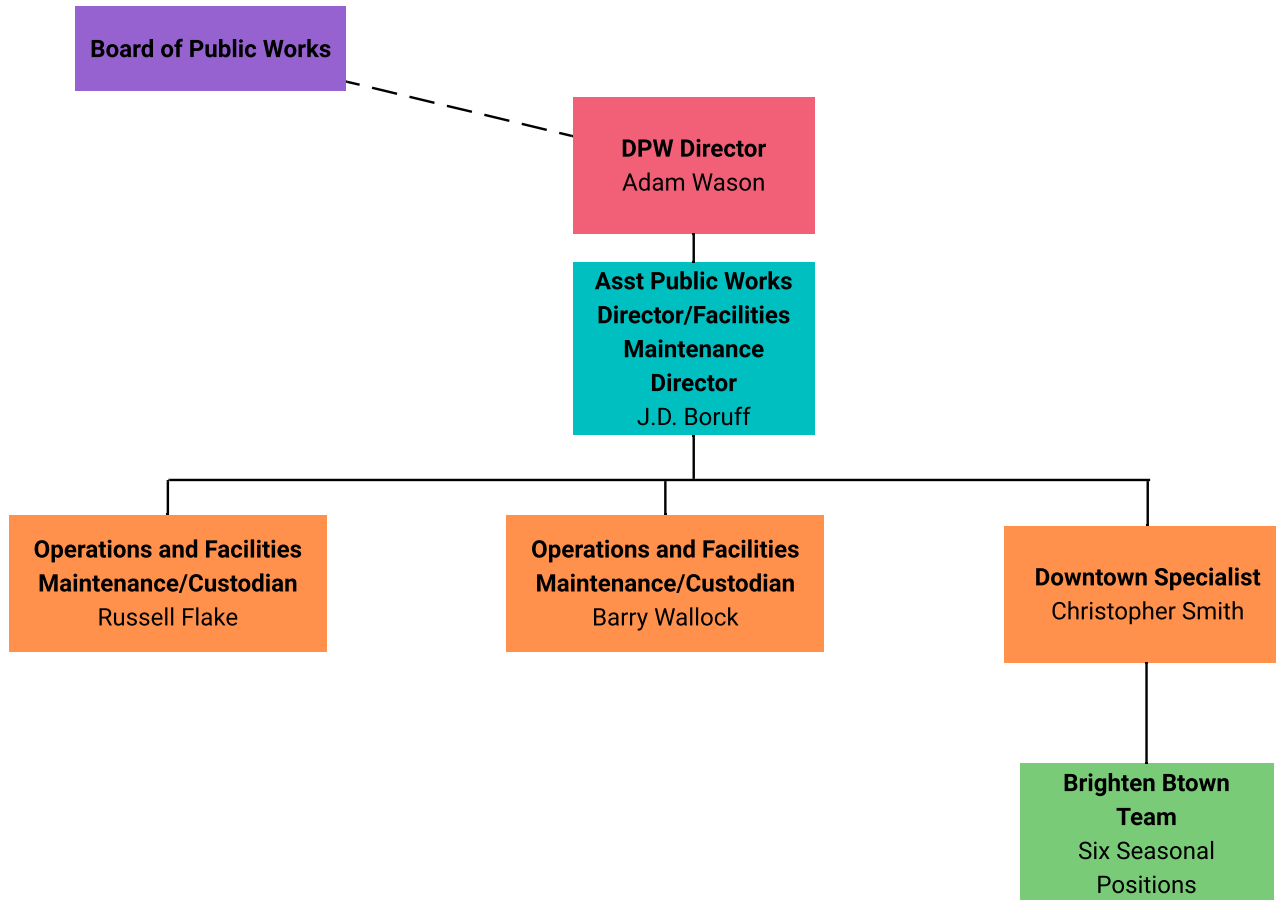


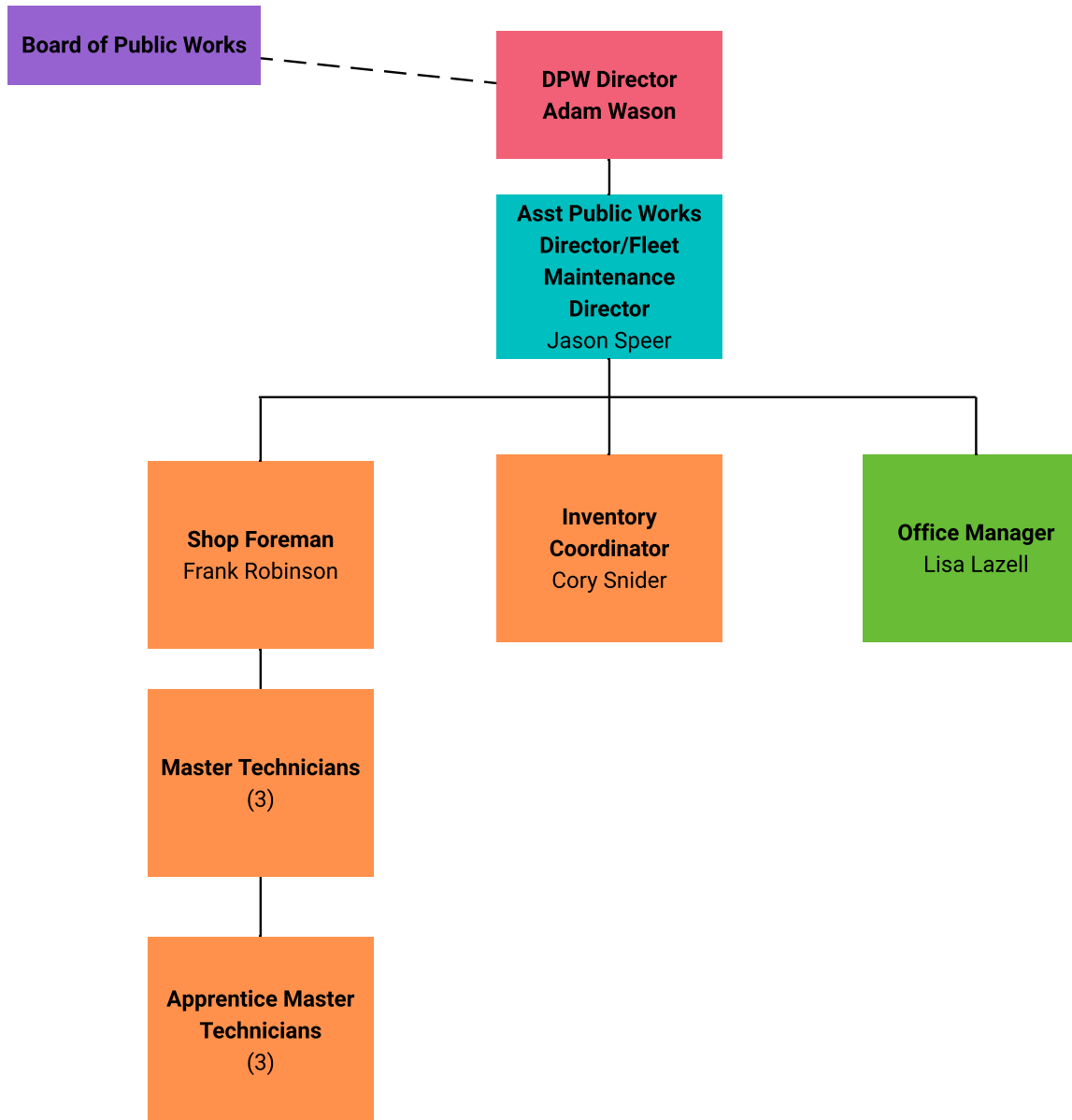


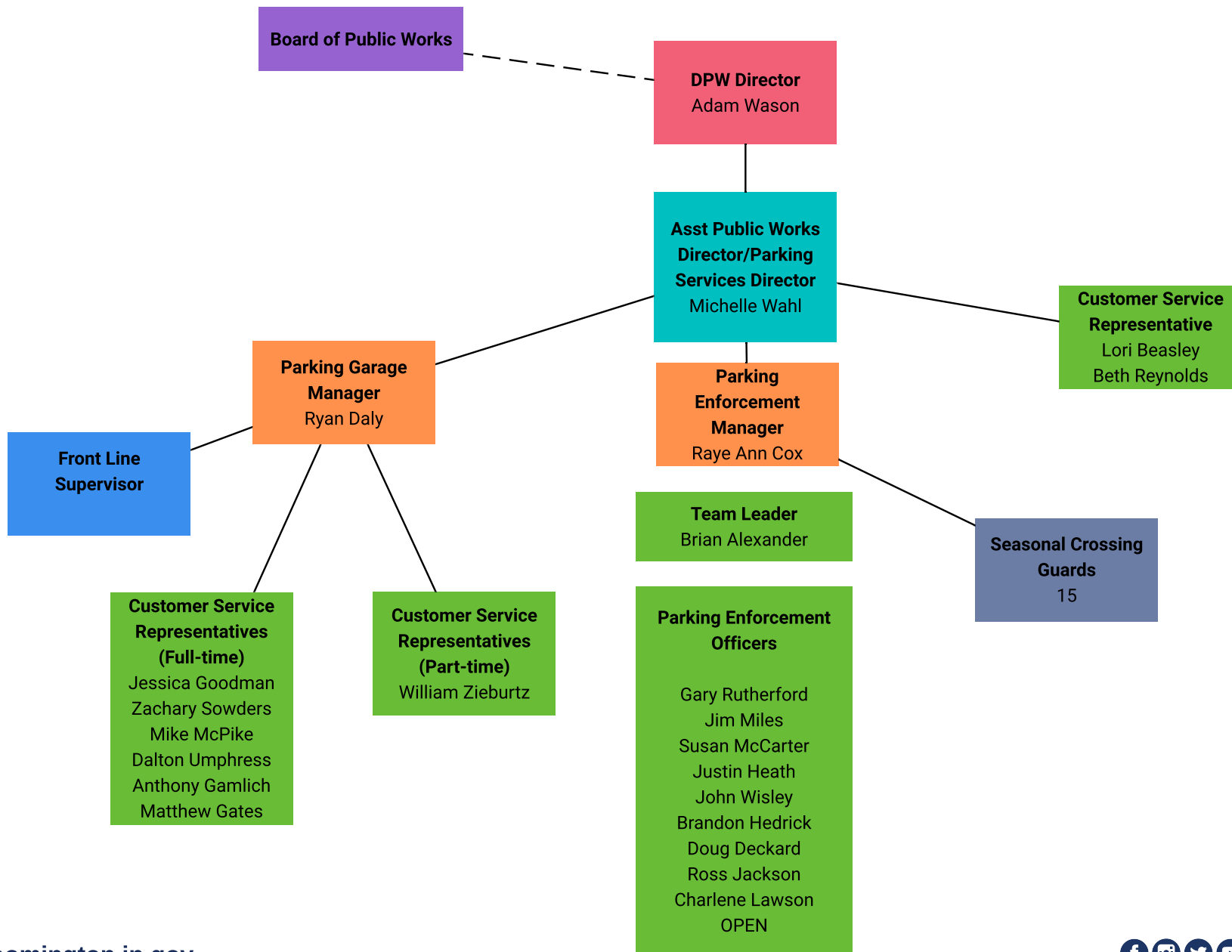
DEPARTMENT OF PUBLIC WORKS

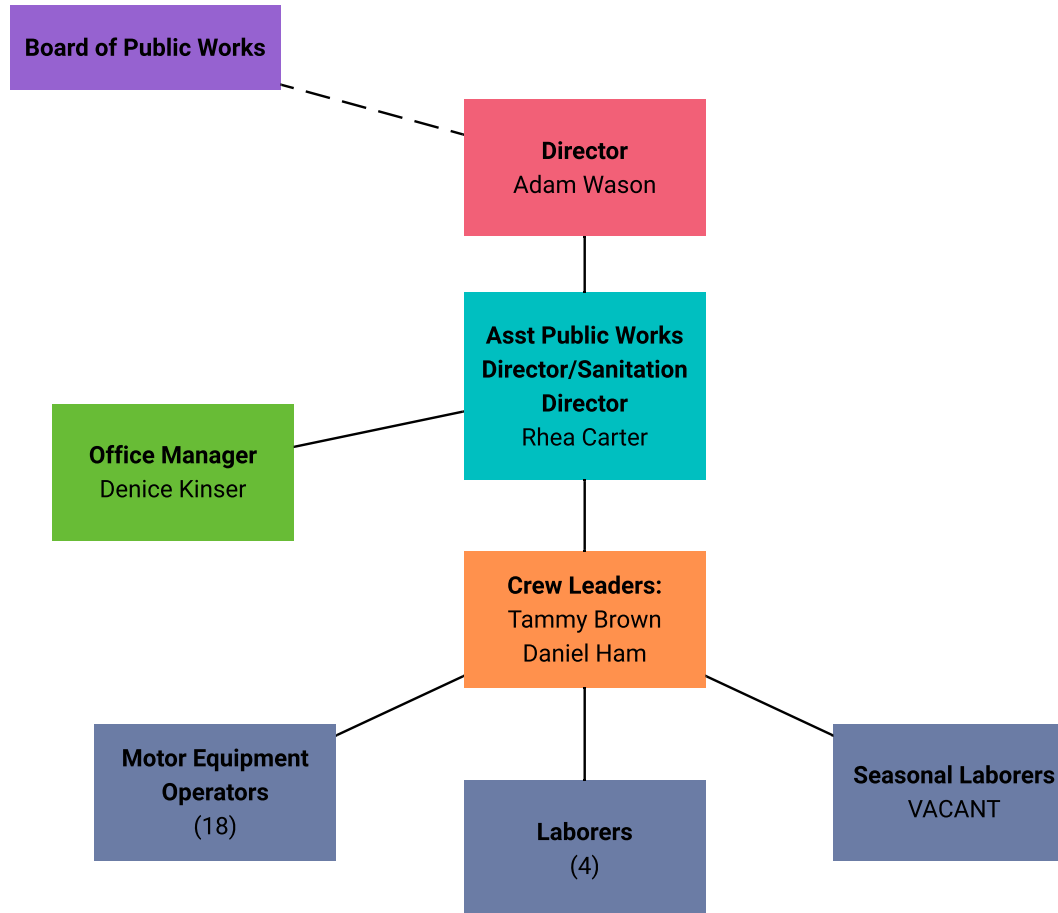


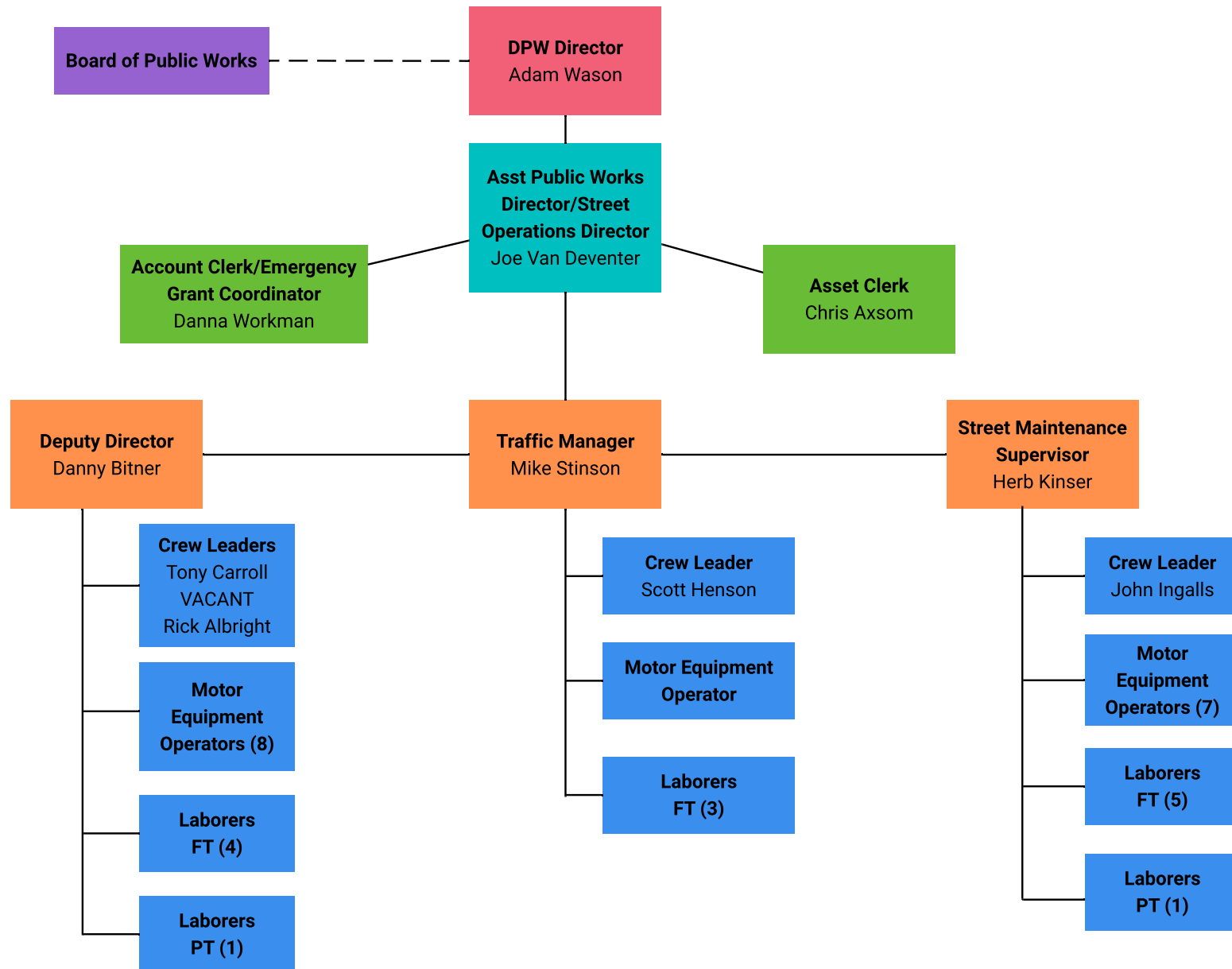
DEPARTMENT OF PUBLIC WORKS:
ANIMAL CARE AND CONTROL



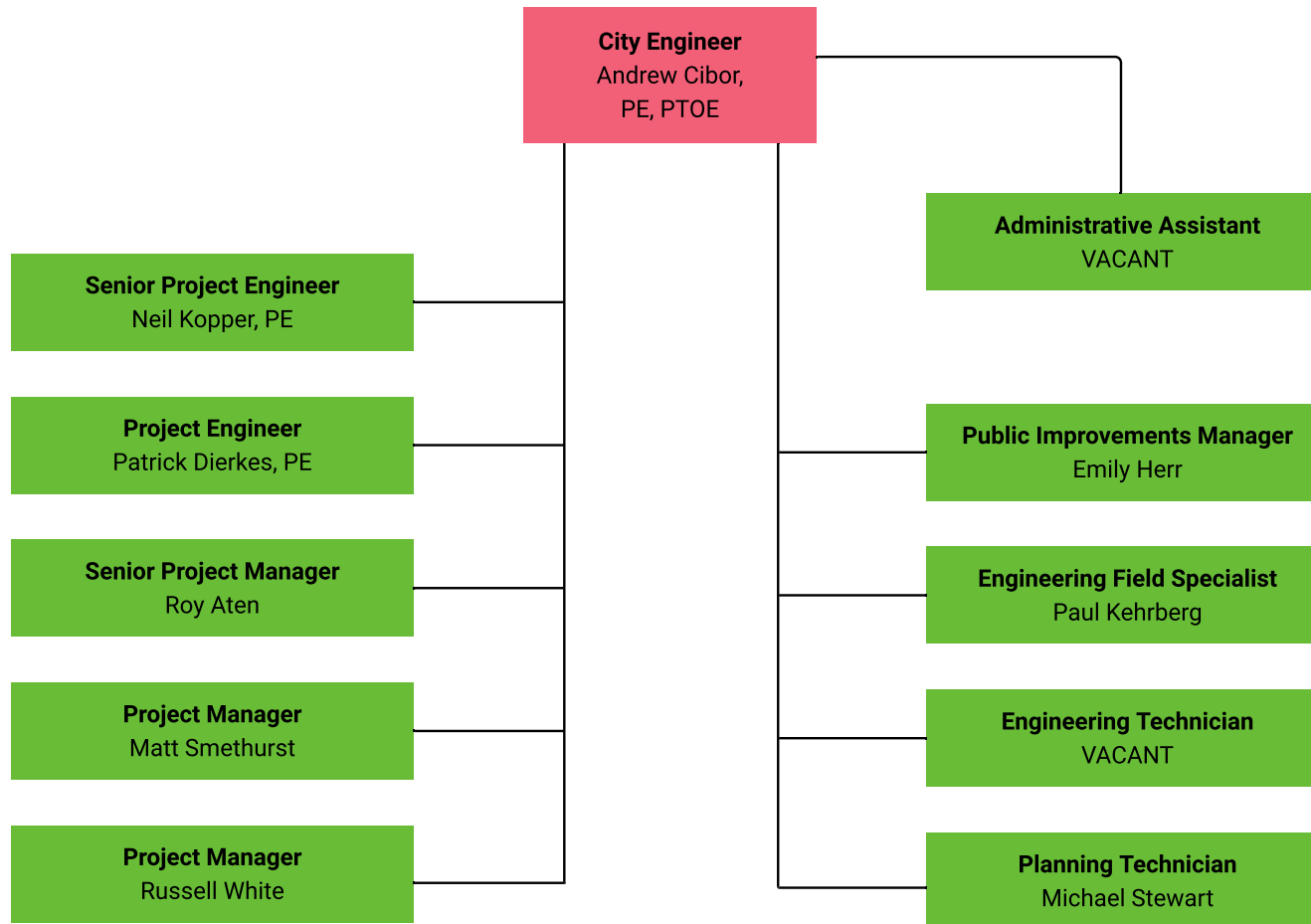


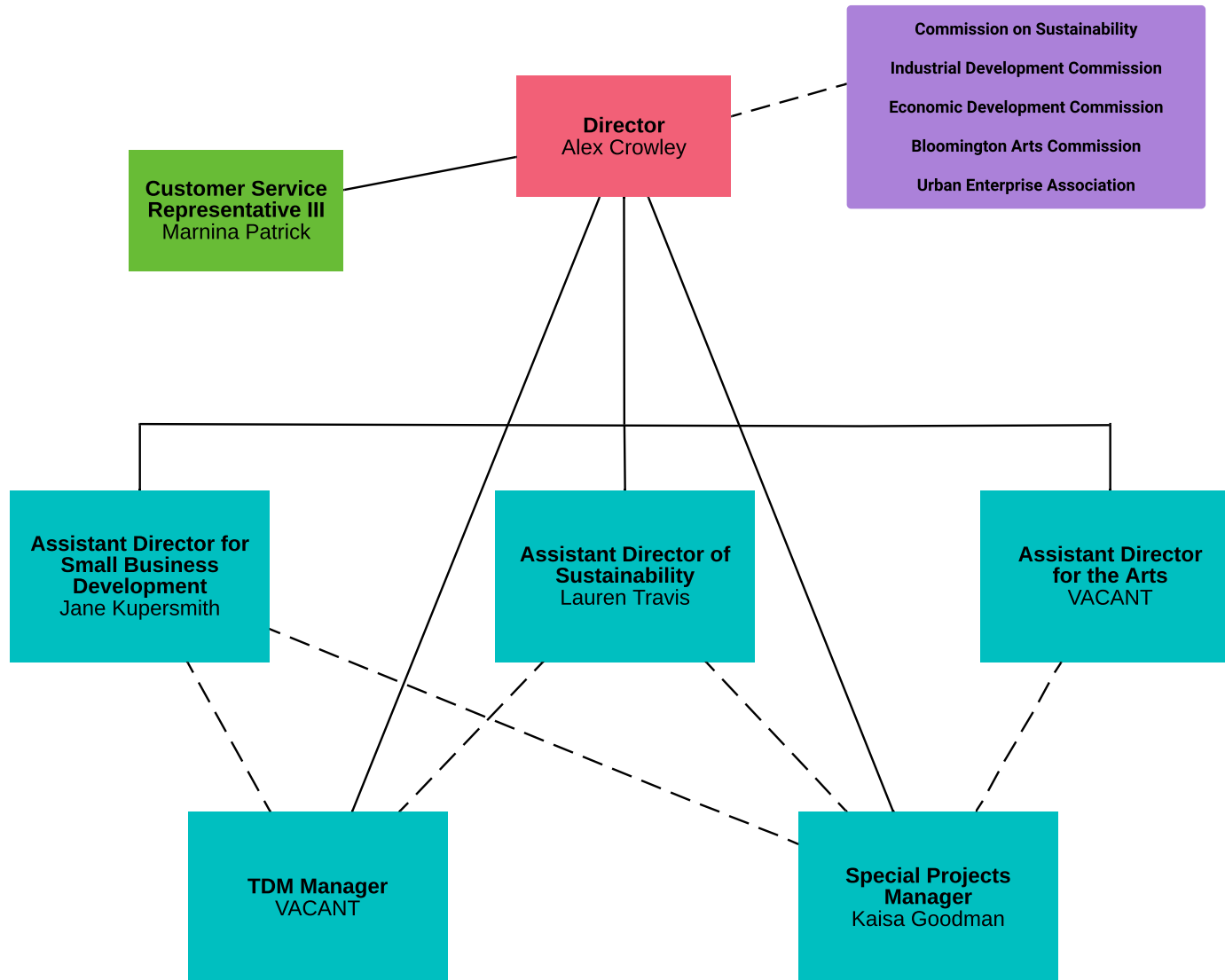


DEPARTMENT OF PUBLIC WORKS:
SANITATION

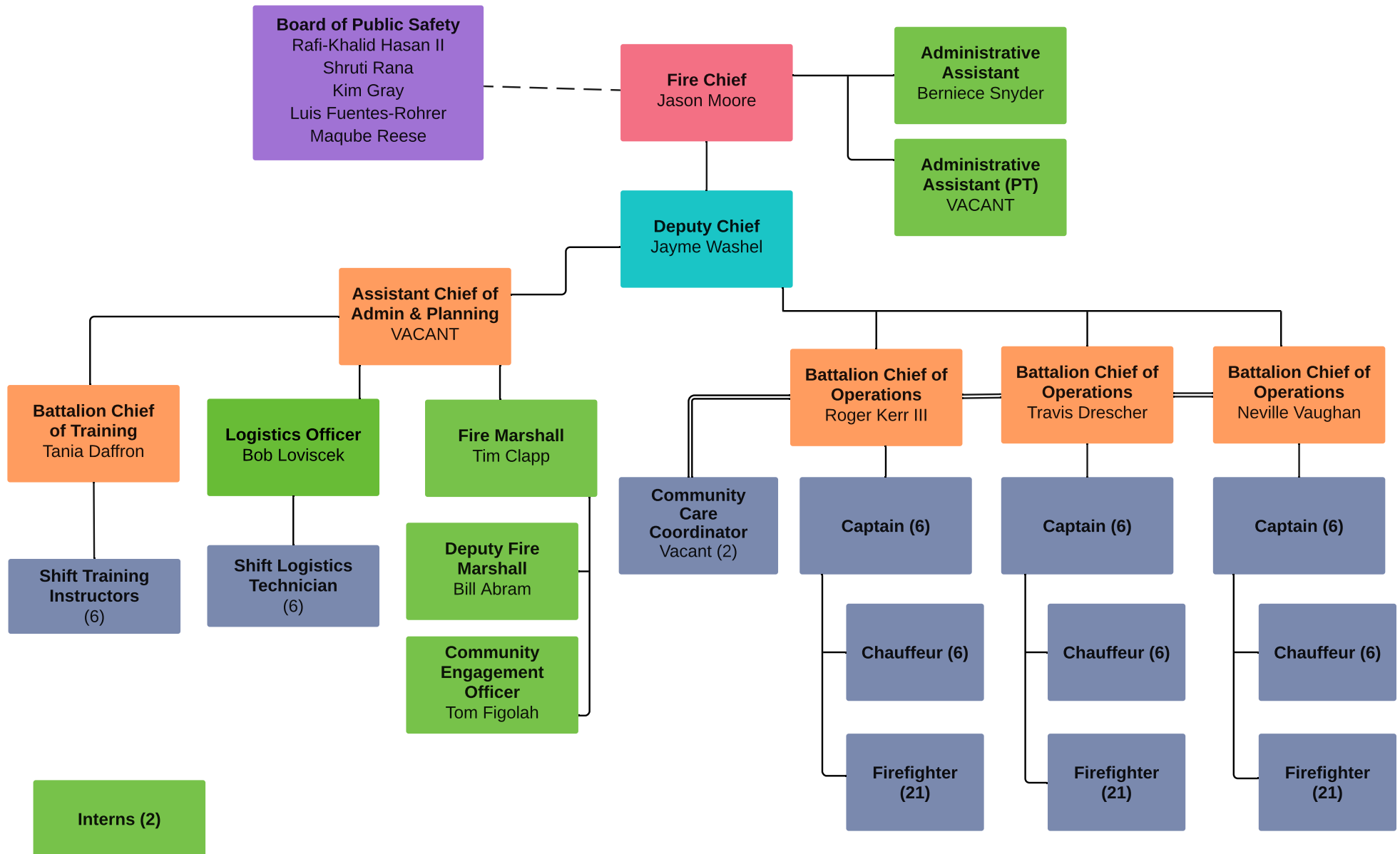
PUBLIC WORKS DEPARTMENT:
STREET & TRAFFIC

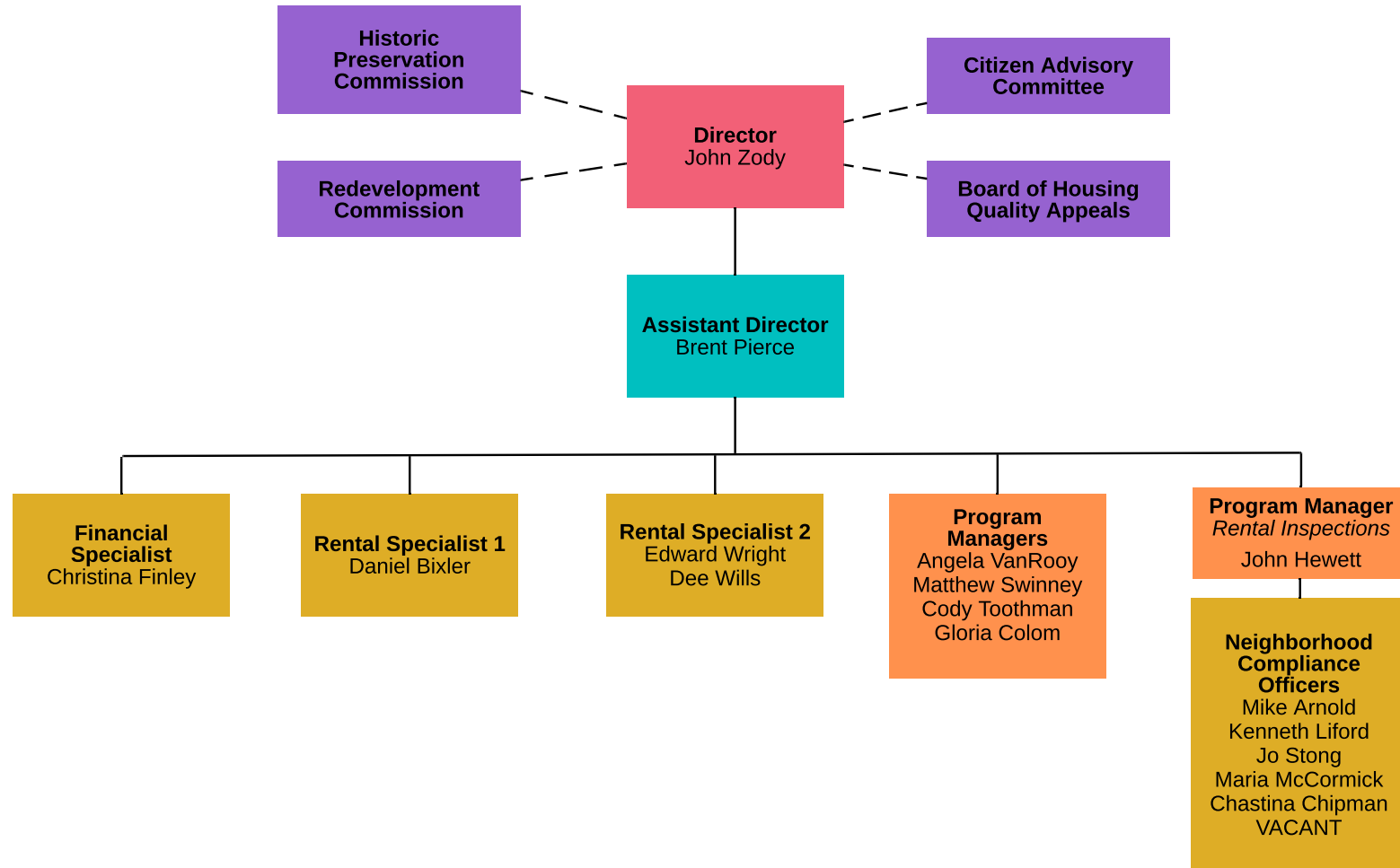
ENGINEERING DEPARTMENT



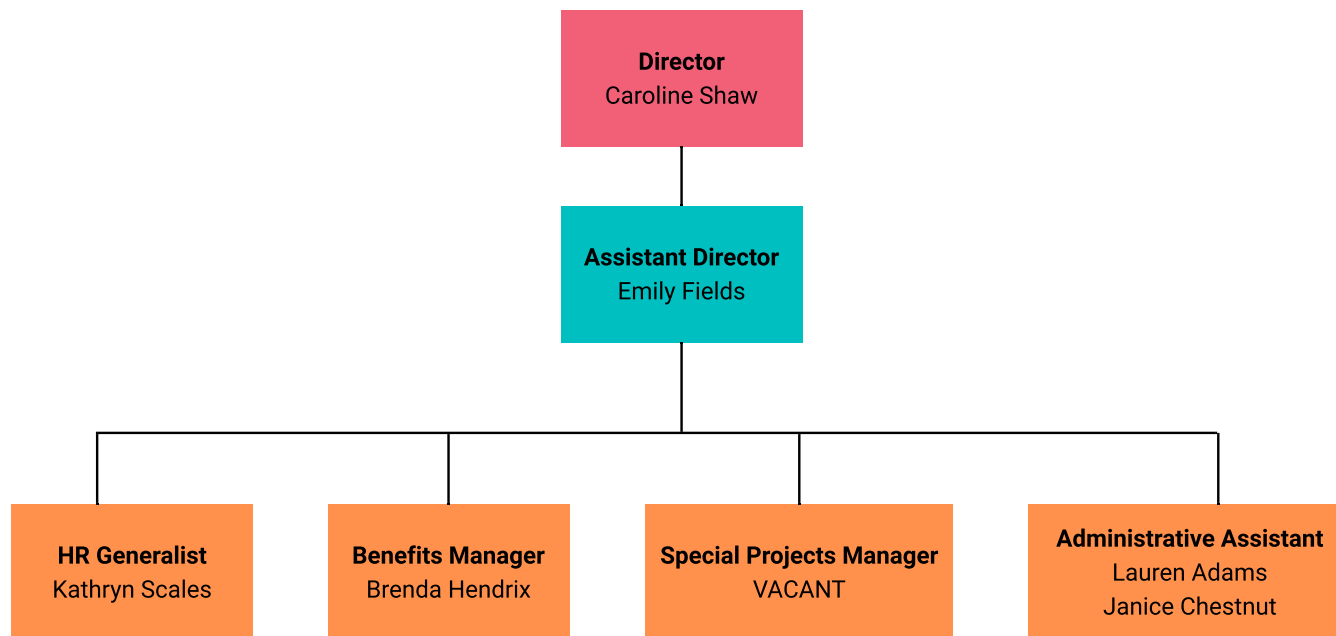


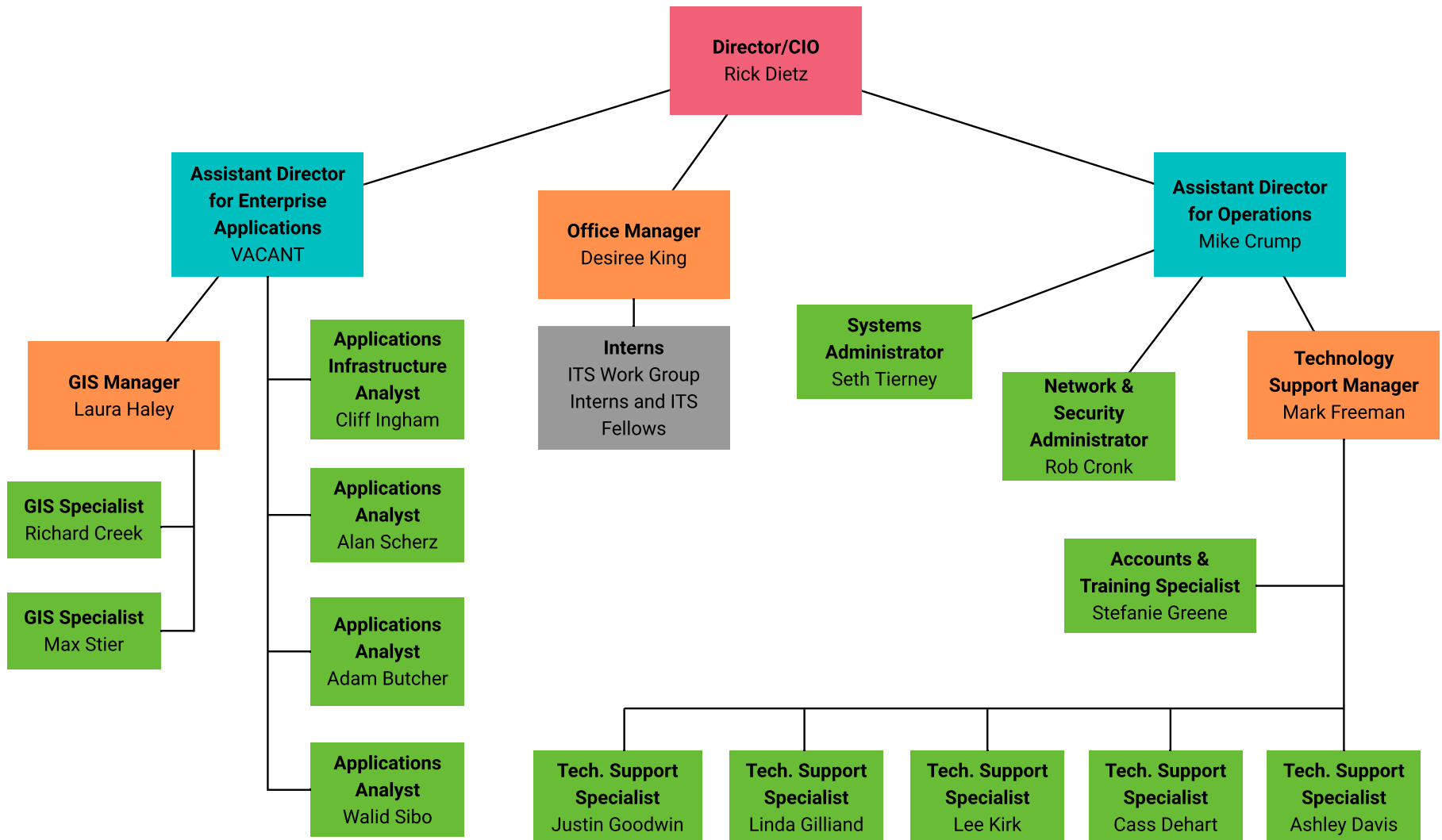
BLOOMINGTON FIRE DEPARTMENT

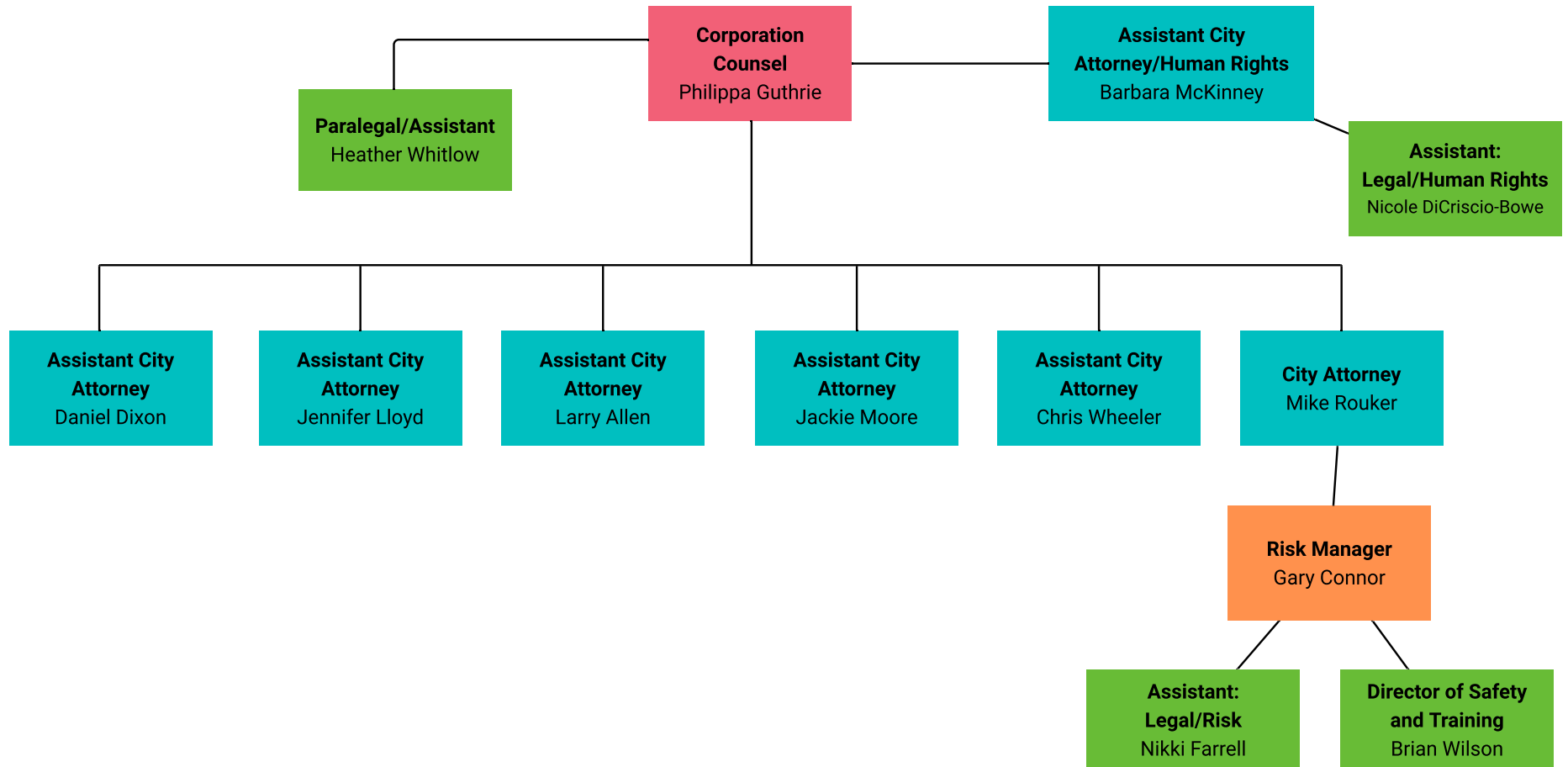


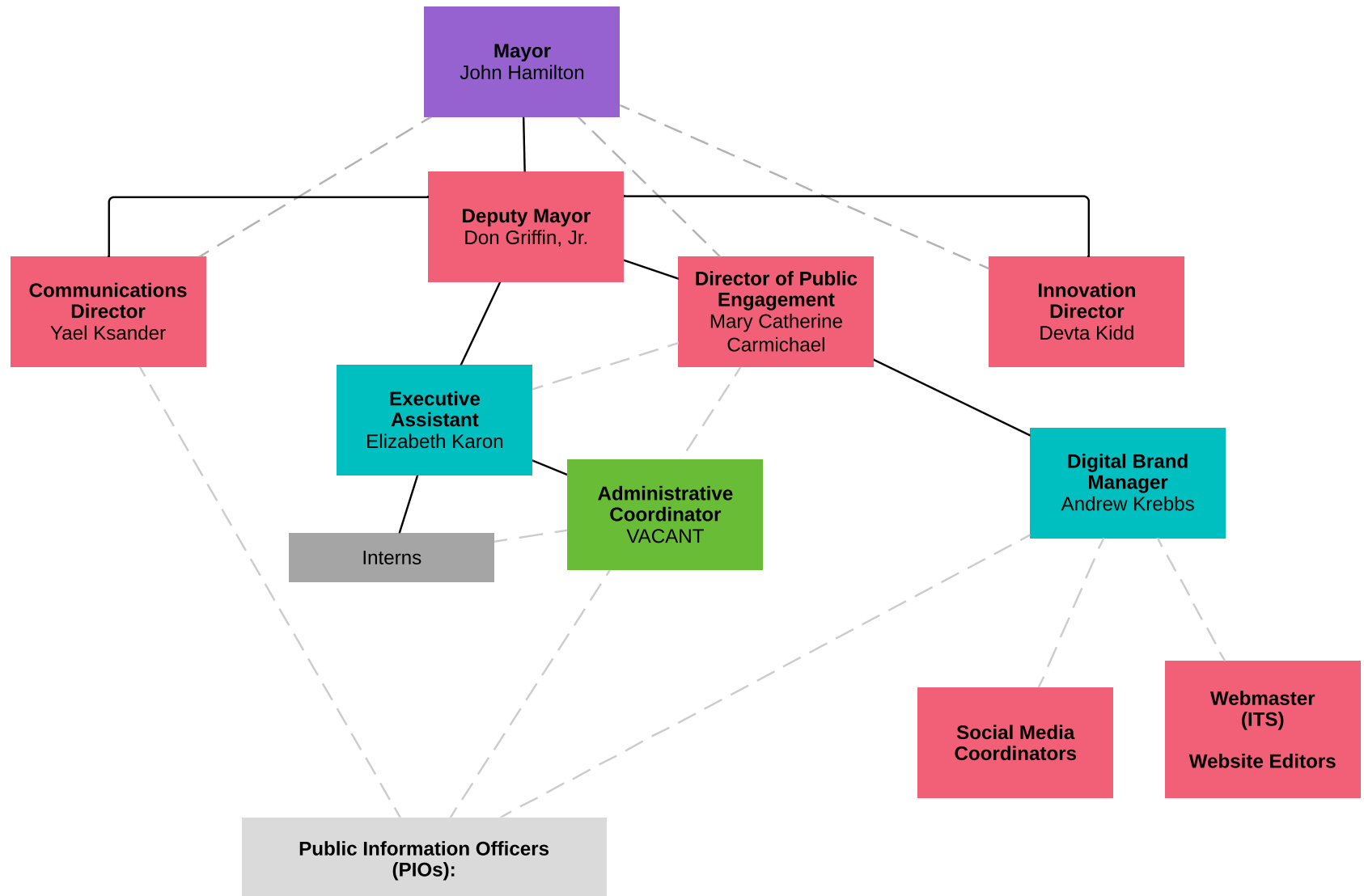


HUMAN RESOURCES DEPARTMENT

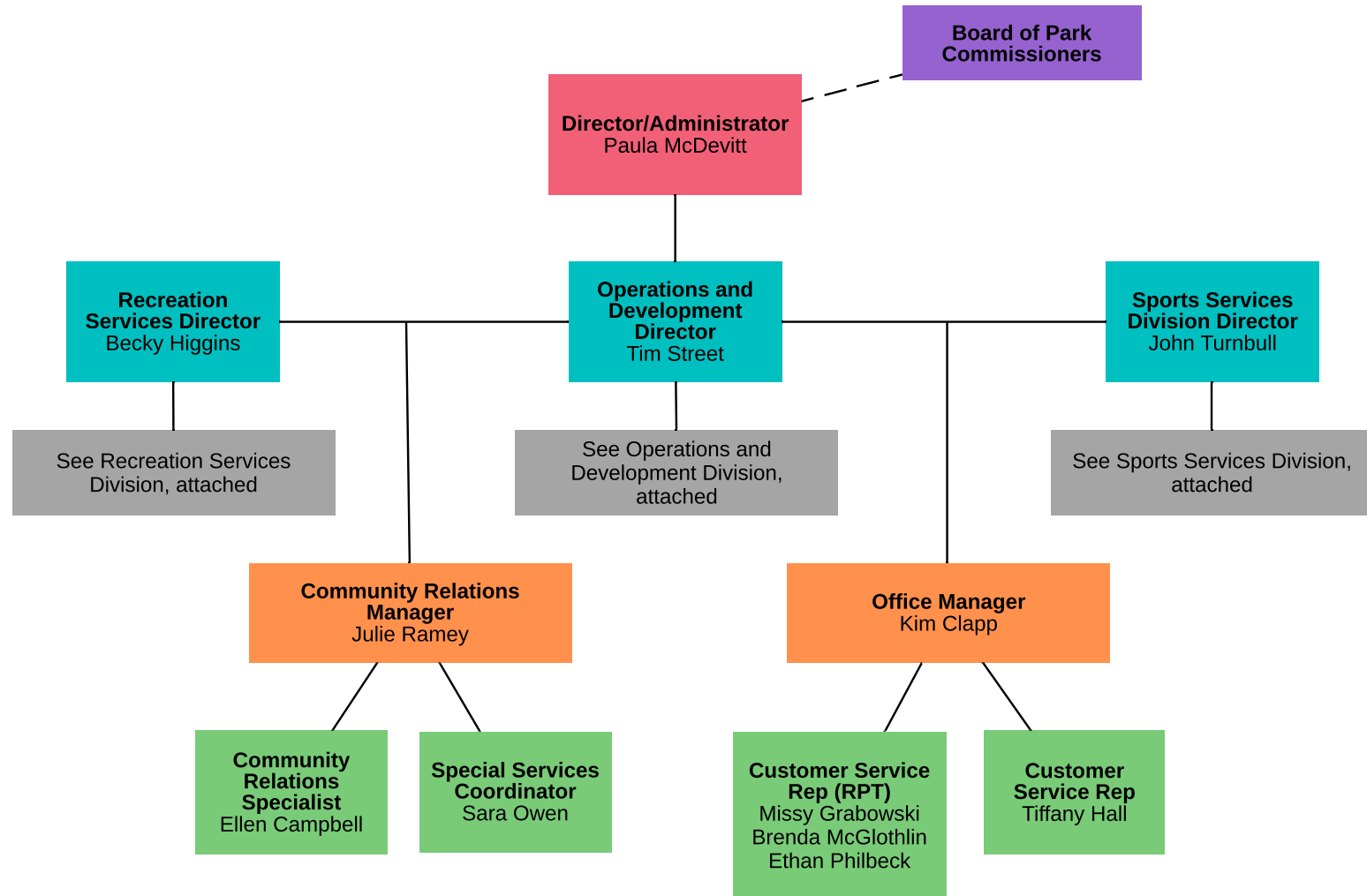


INFORMATION & TECHNOLOGY
SERVICES DEPARTMENT: ITS

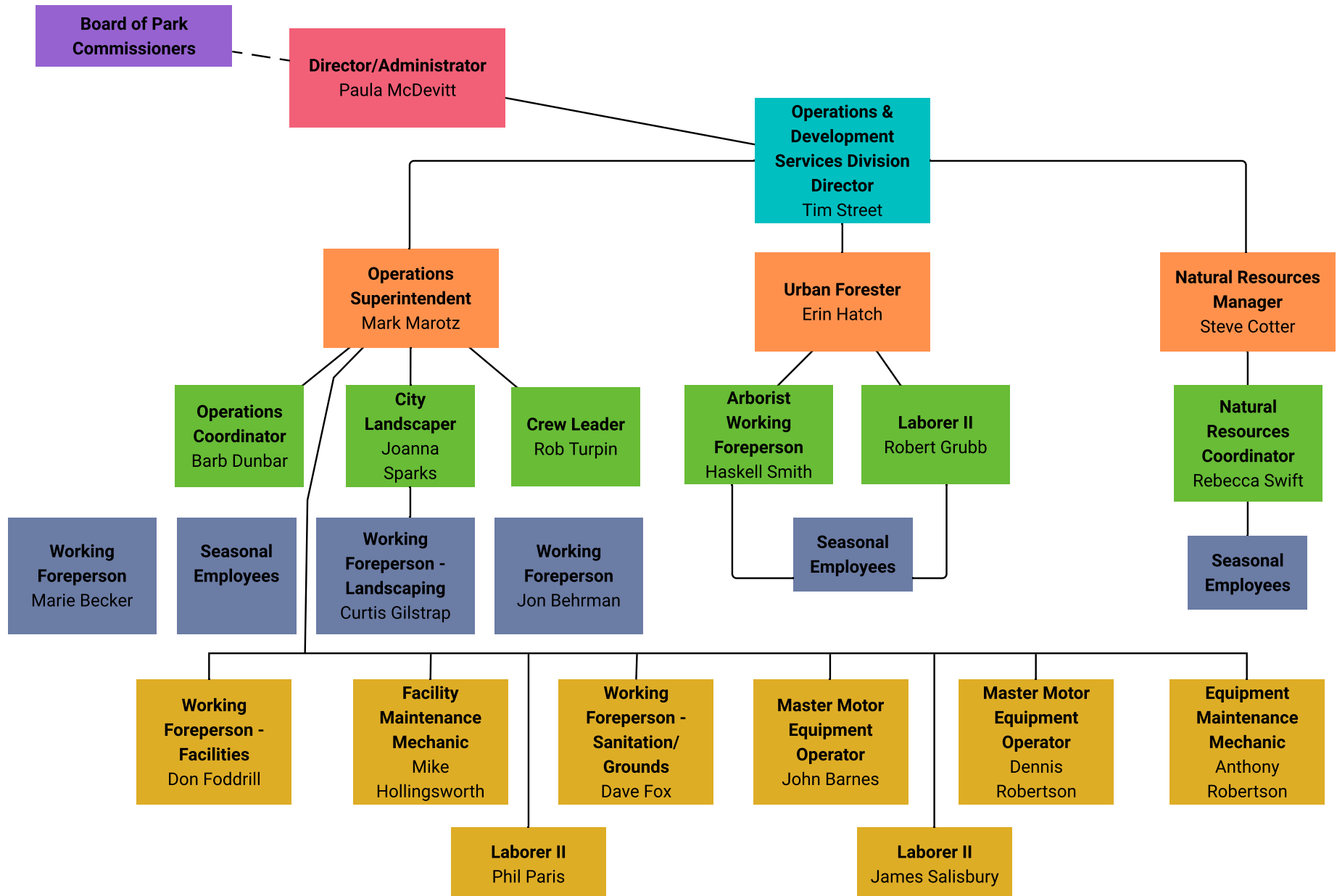




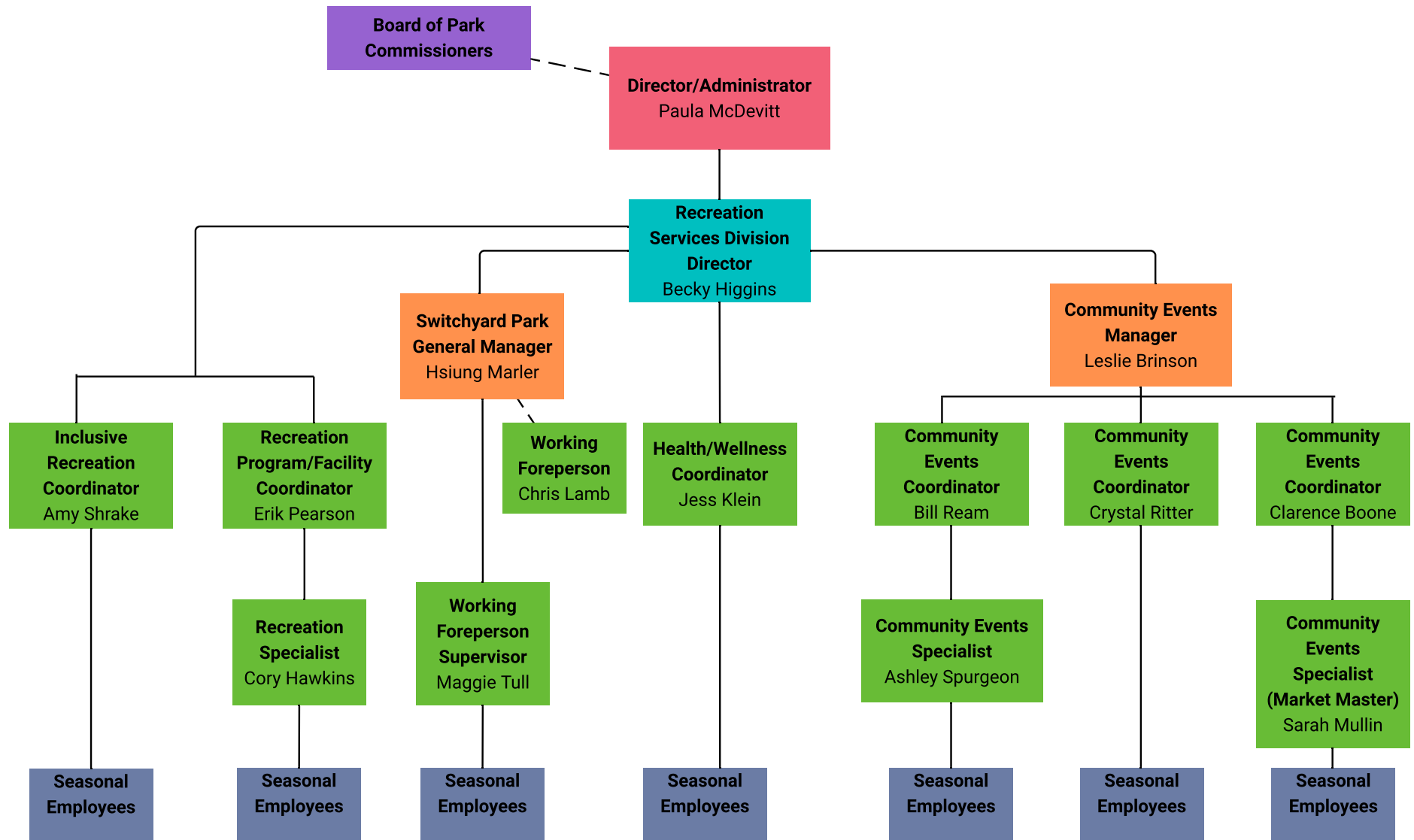
PARKS & RECREATION DEPARTMENT

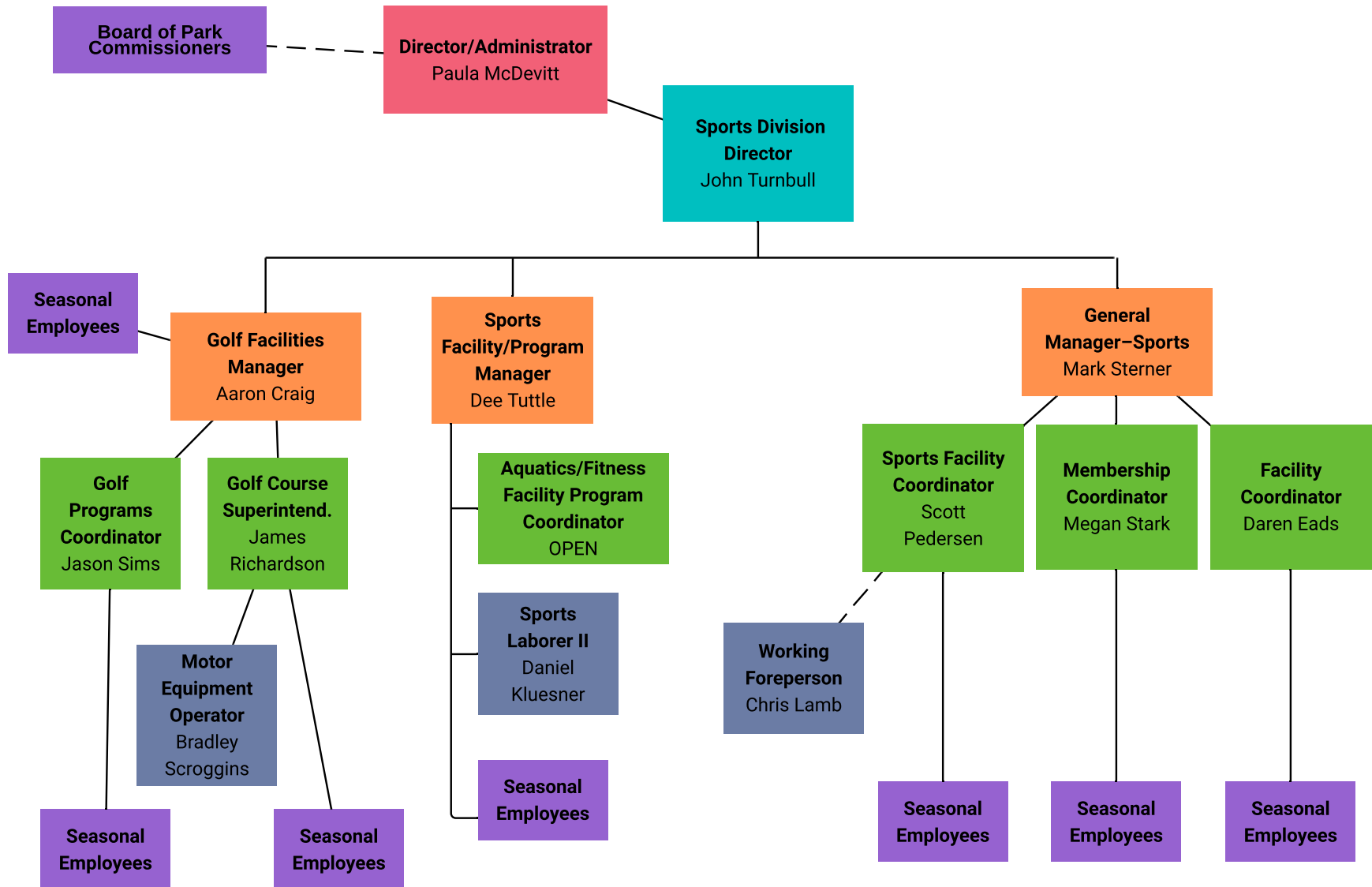


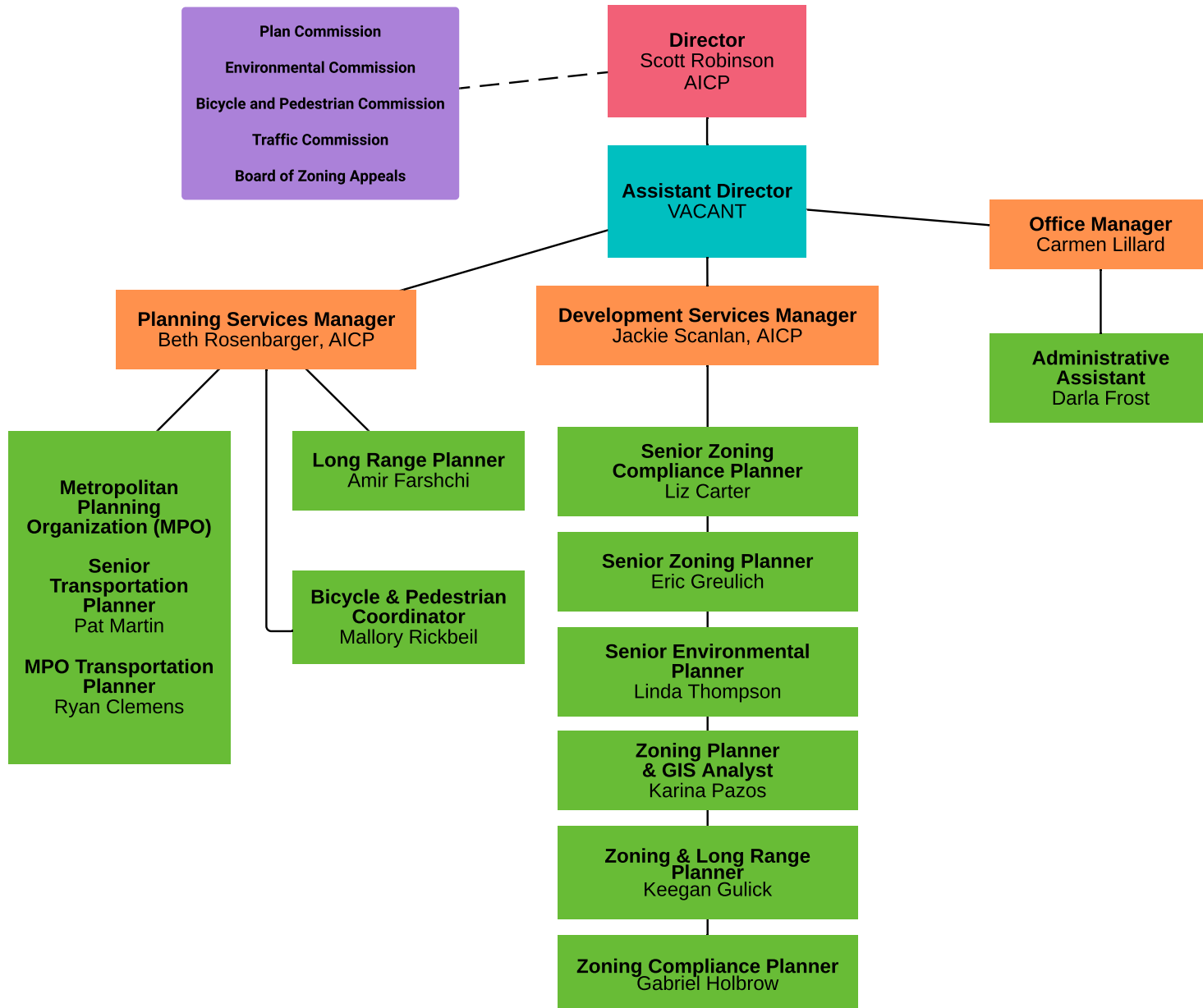
PARKS & RECREATION DEPARTMENT: OPERATIONS & DEVELOPMENT DIVISION



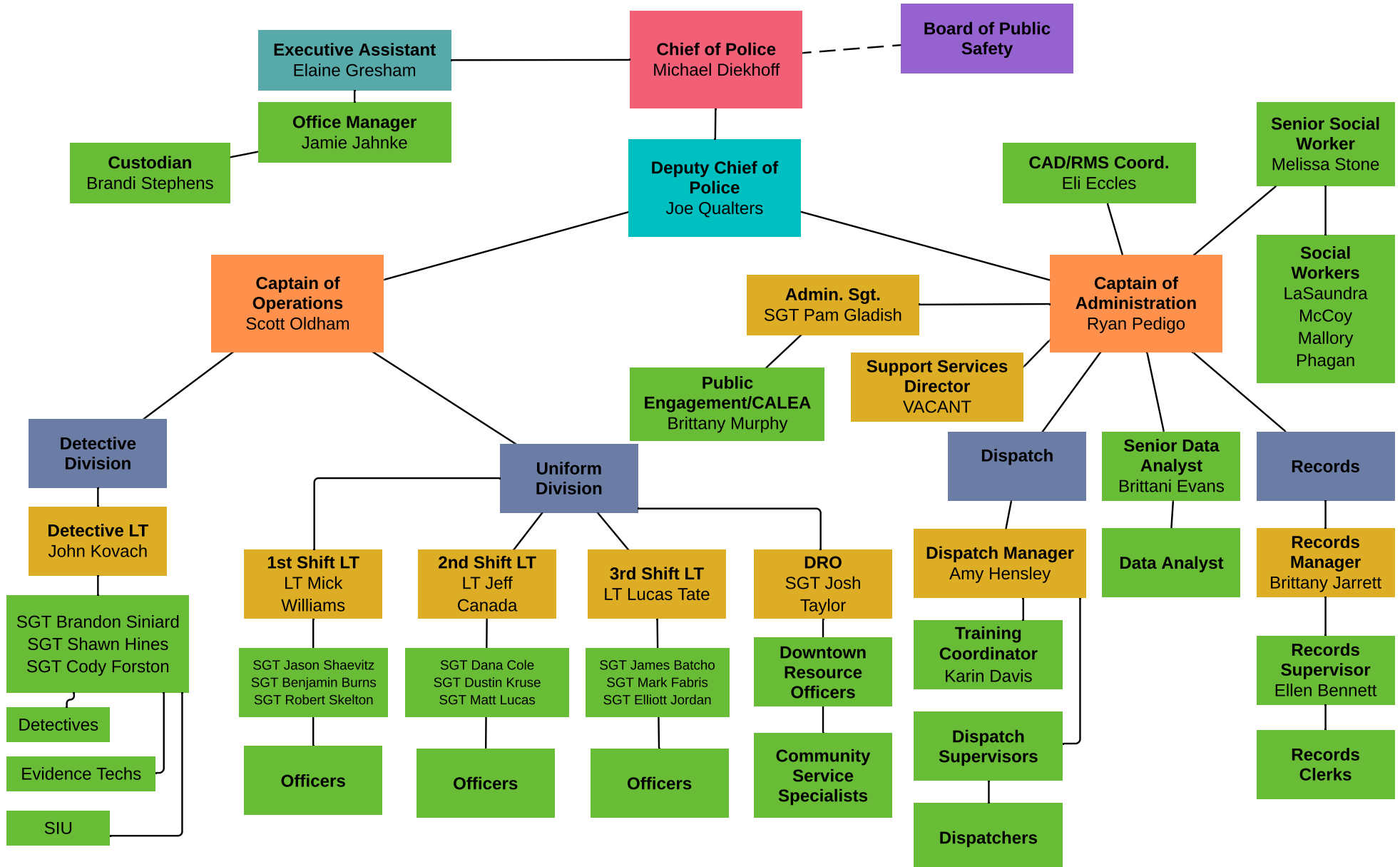
PARKS & RECREATION DEPARTMENT: RECREATION SERVICES DIVISION



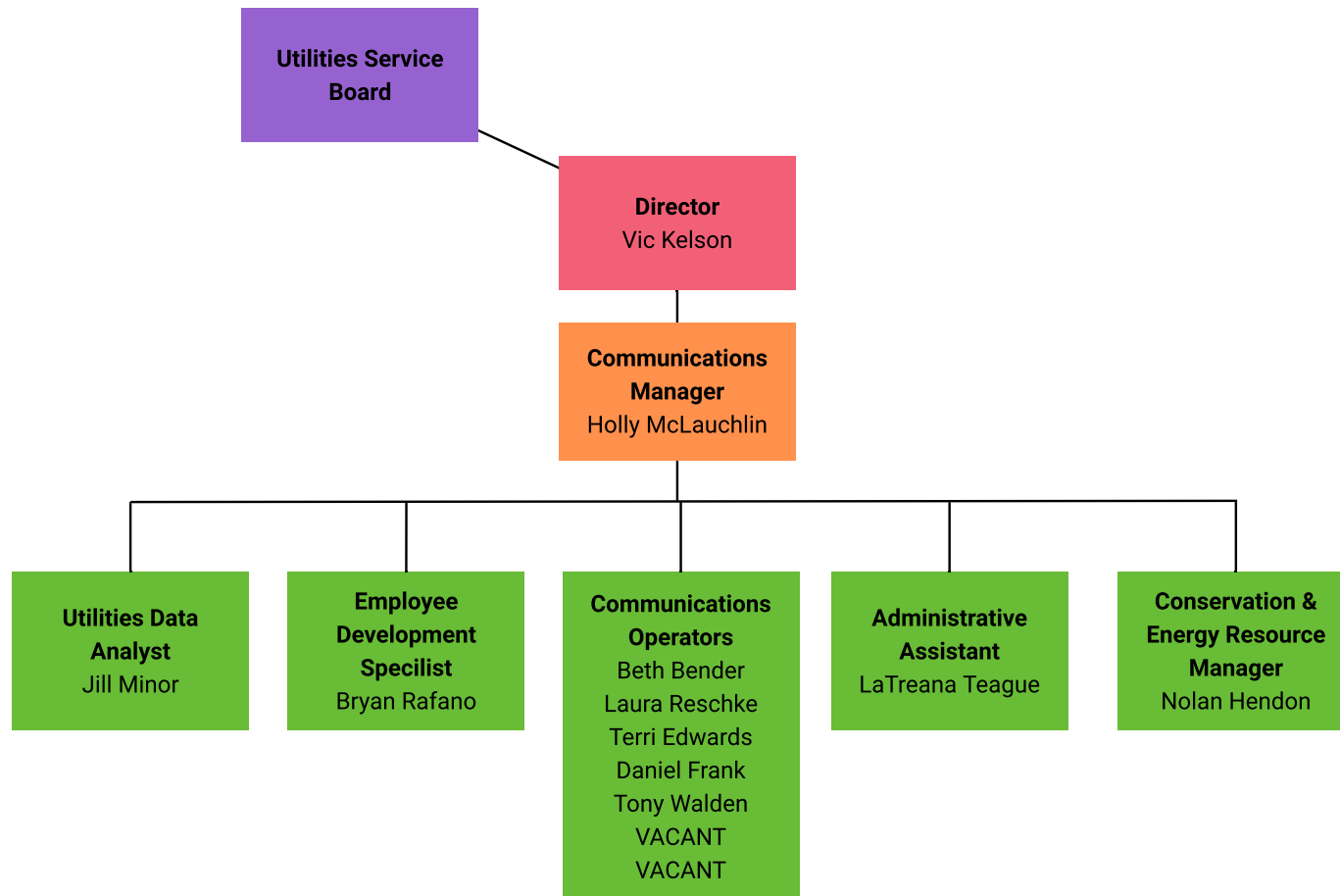
PARKS & RECREATION DEPARTMENT:
SPORTS DIVISION

**PLANNING & TRANSPORTATION
DEPARTMENT**

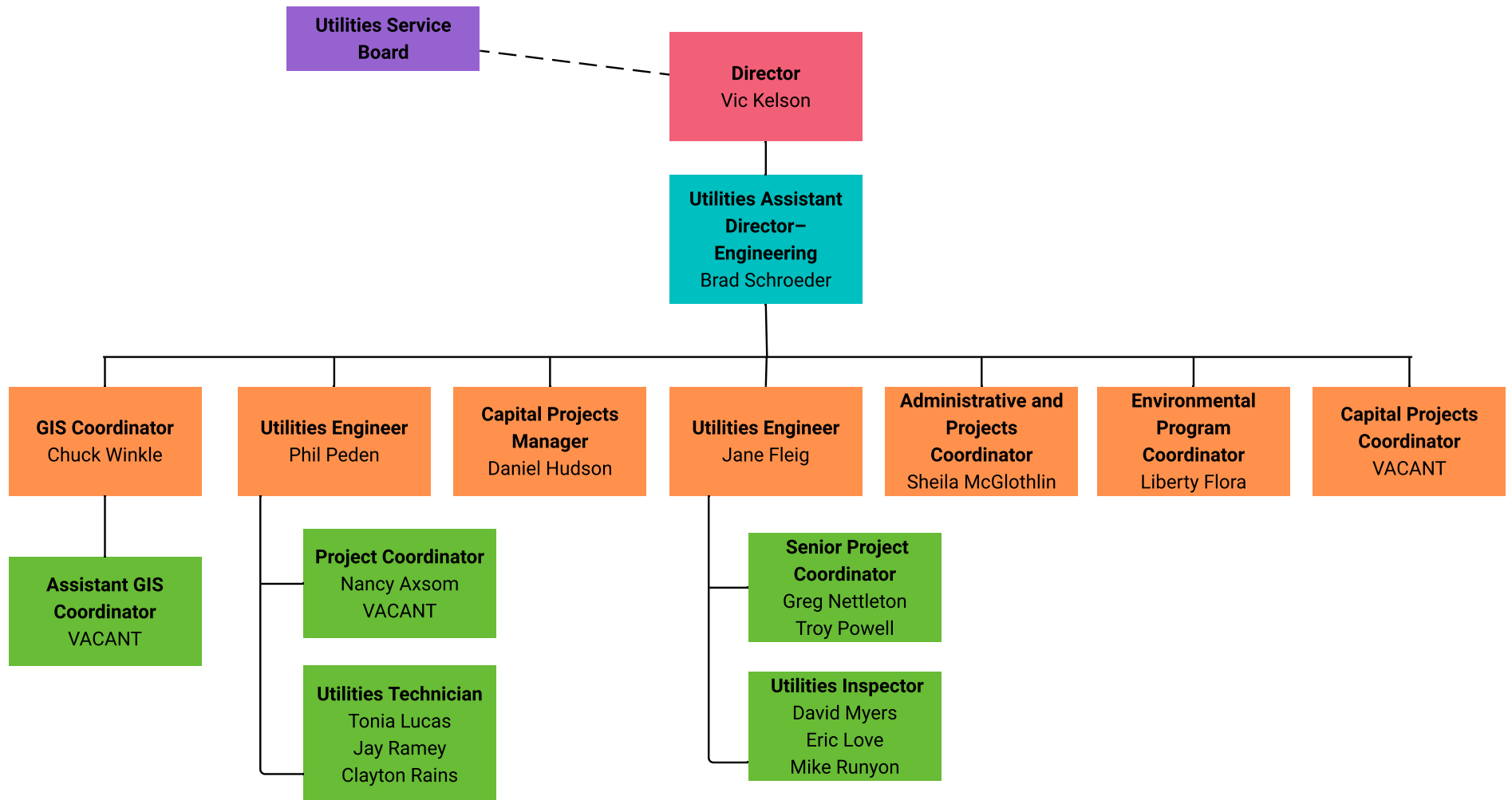
BLOOMINGTON POLICE DEPARTMENT



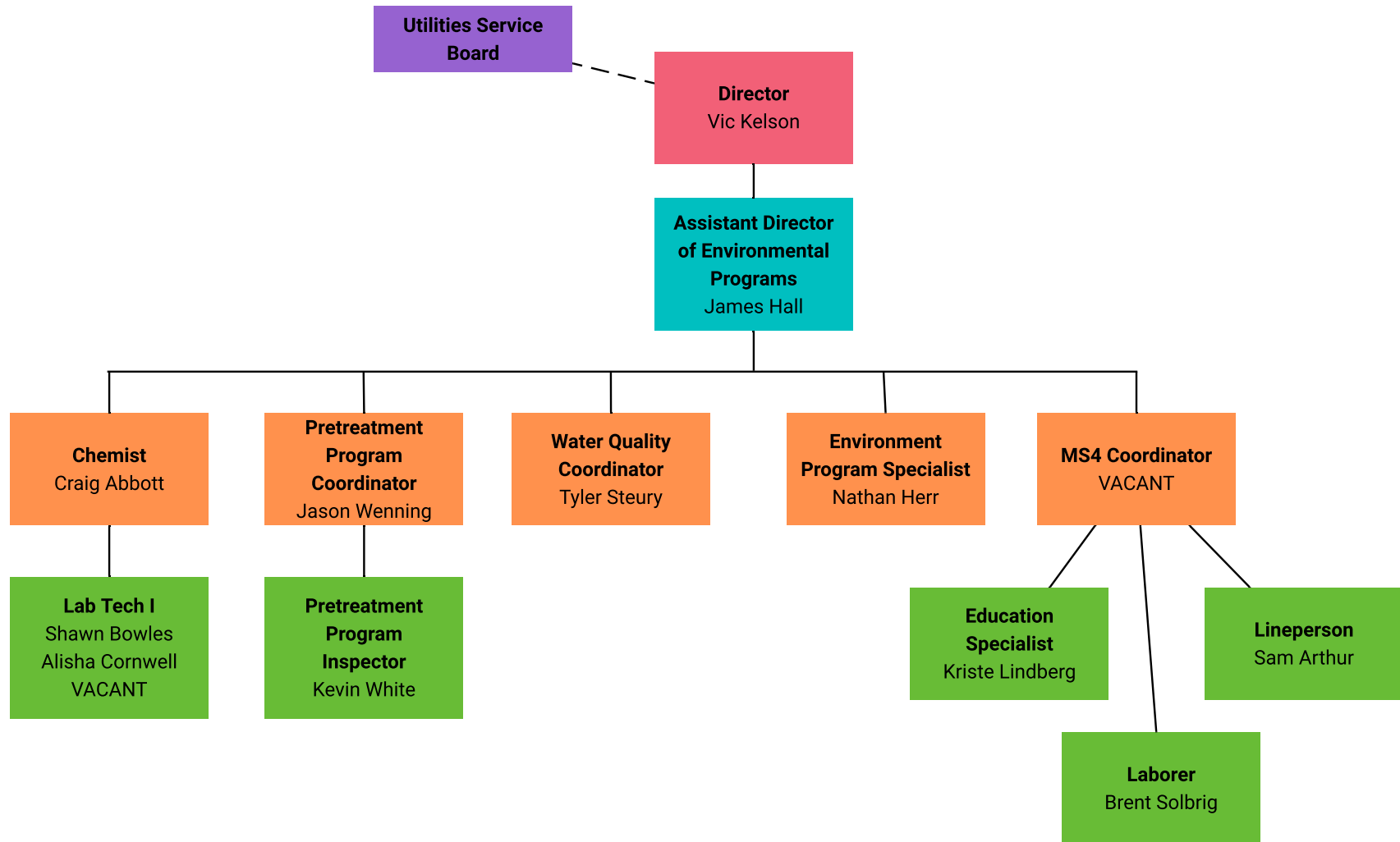
UTILITIES: ADMINISTRATION

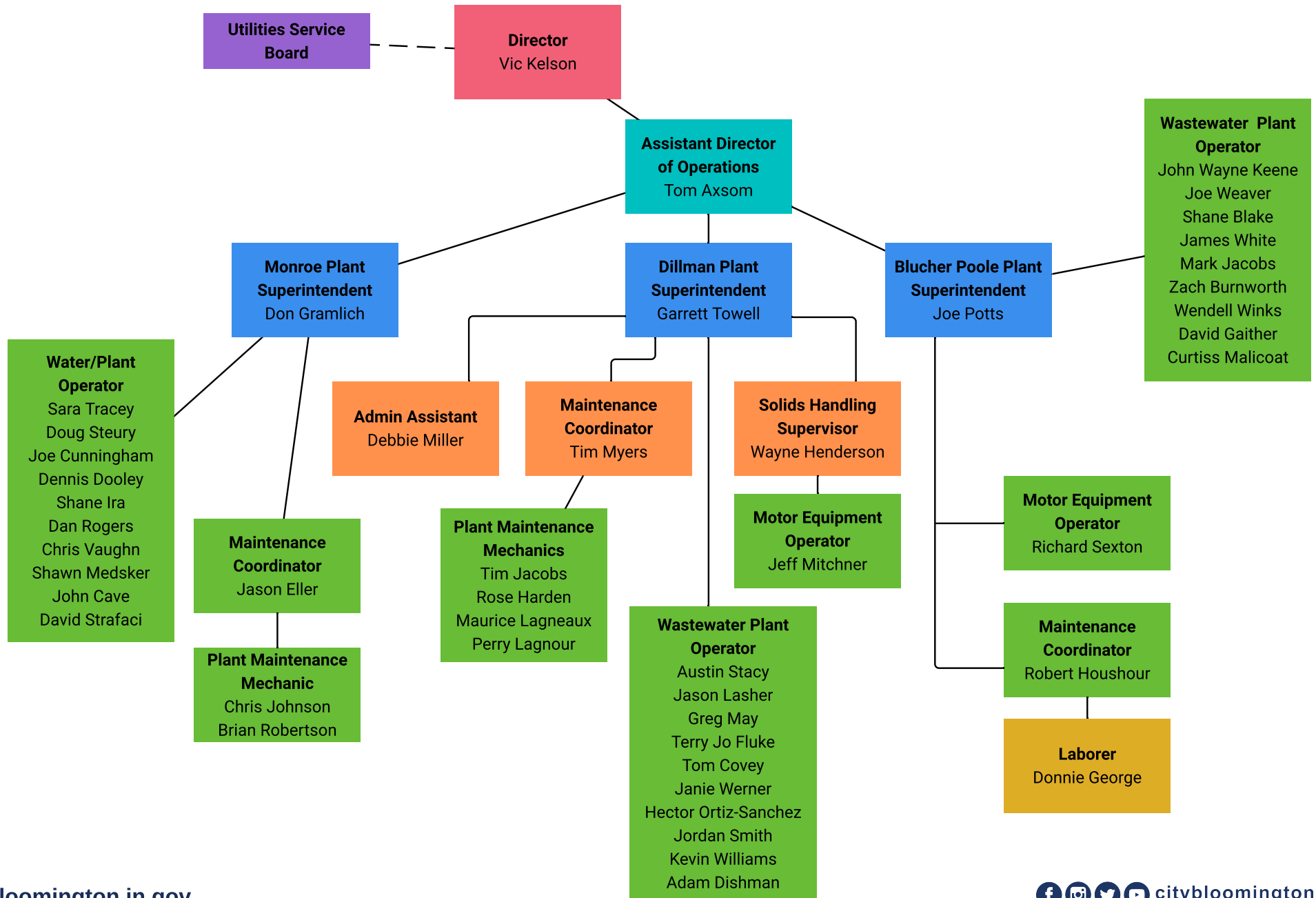


UTILITIES: ENGINEERING

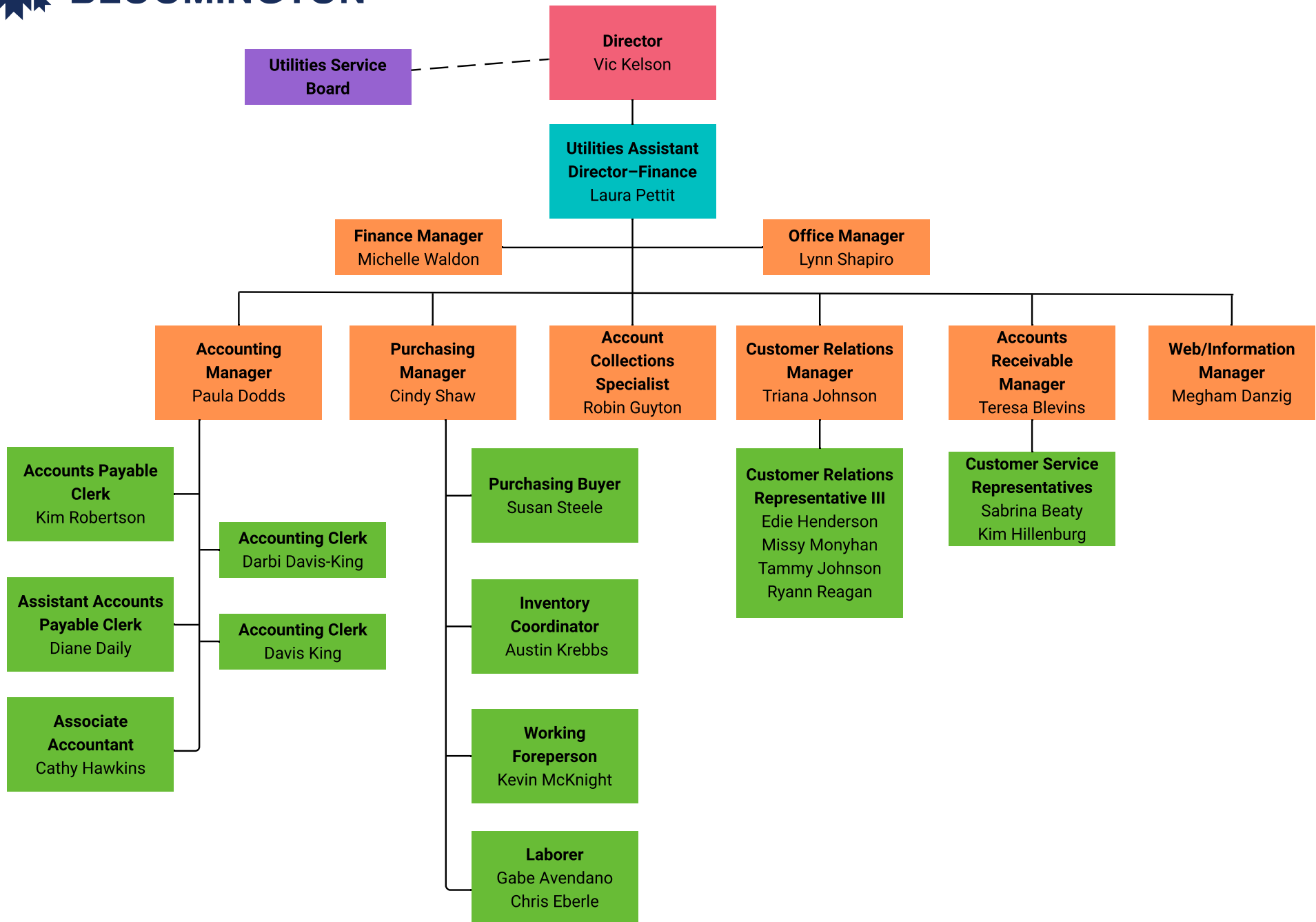


UTILITIES: ENVIRONMENTAL PROGRAMS





UTILITIES: FINANCE



UTILITIES: TRANSMISSION & DISTRIBUTION

