

Watersheds and Weather

Kriste Lindberg, MS4CECI
Stormwater Education Specialist



CITY OF BLOOMINGTON
UTILITIES

THE NATION BEHAVES WELL IF IT TREATS
THE NATURAL RESOURCES AS ASSETS
WHICH IT MUST TURN OVER
TO THE NEXT GENERATION
INCREASED AND NOT IMPAIRED IN VALUE

THEODORE ROOSEVELT 1910

H-135

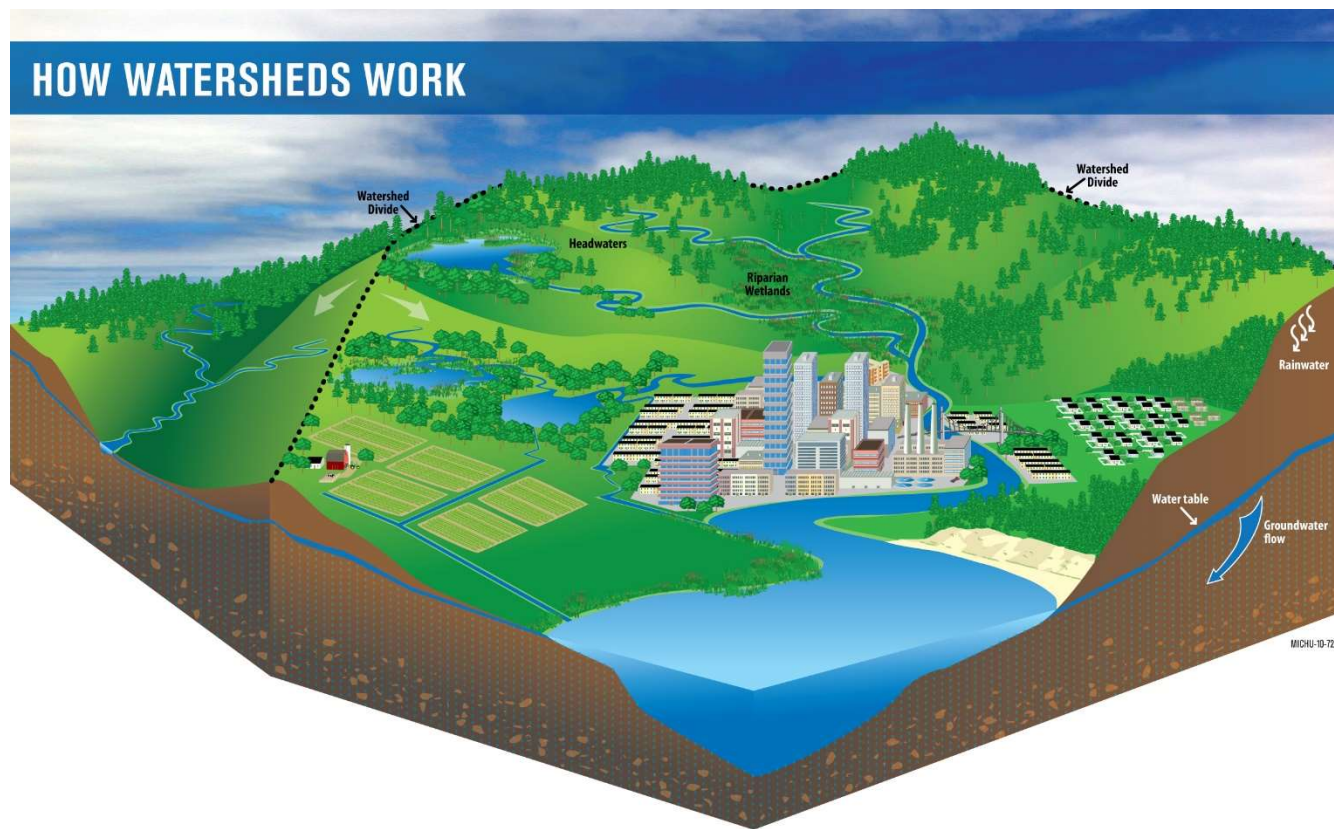
WHAT IS STORMWATER?

Water that flows over land from rainfall or snowmelt, before it enters natural waterways



WATERSHEDS

Areas of land that drain to particular bodies of water.



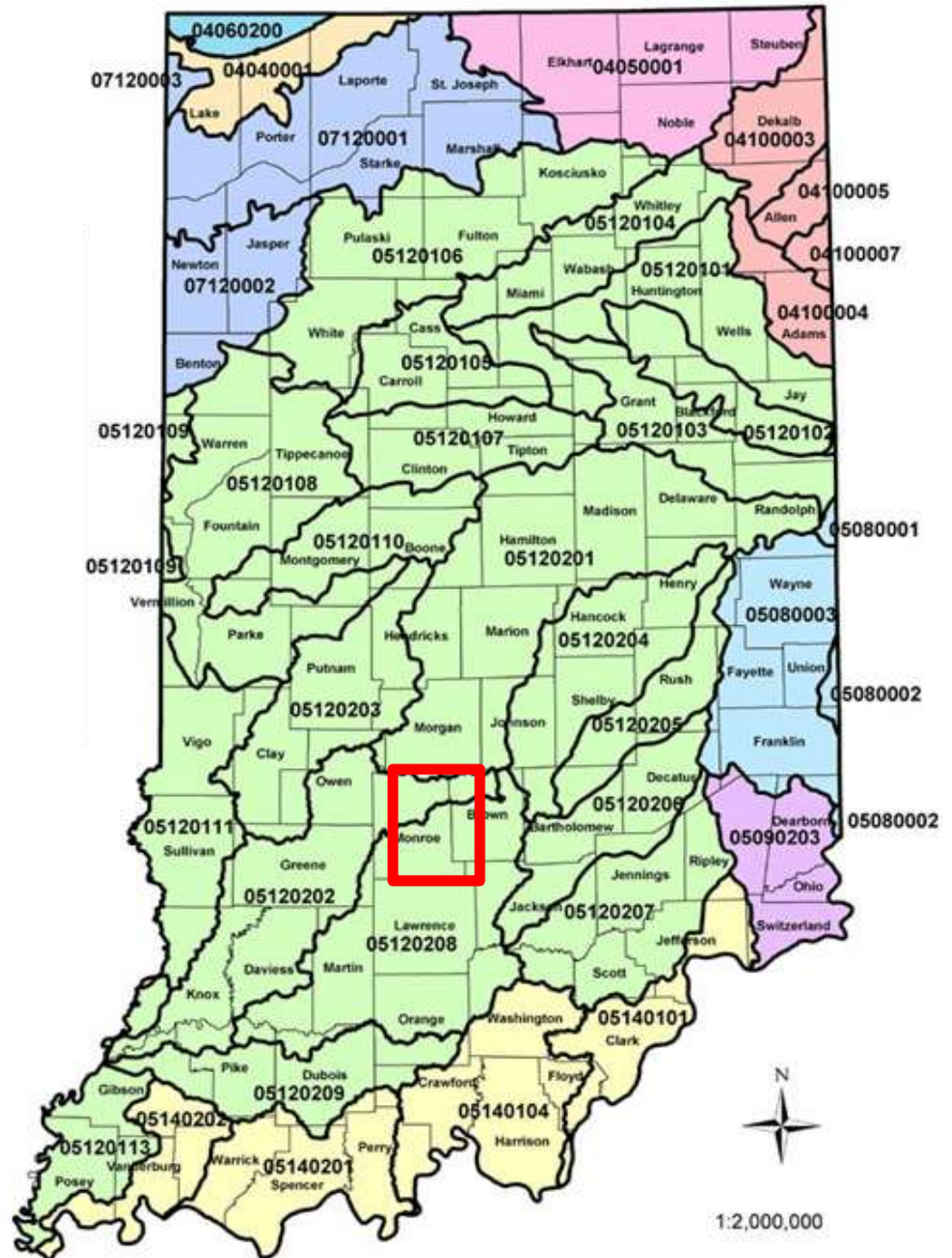
Hydrologic Unit Code (HUC)

- A **standardized numbering system** so all can “speak the same language”
- The **smaller** the number, the **bigger** the watershed; the **bigger** the number, the **smaller** the watershed
- **HUC 12** most commonly used (smallest watershed)

Indiana's Watersheds

An example:
Shows the area of
the major
watershed divide
in Bloomington.

(Wabash River
drainage)

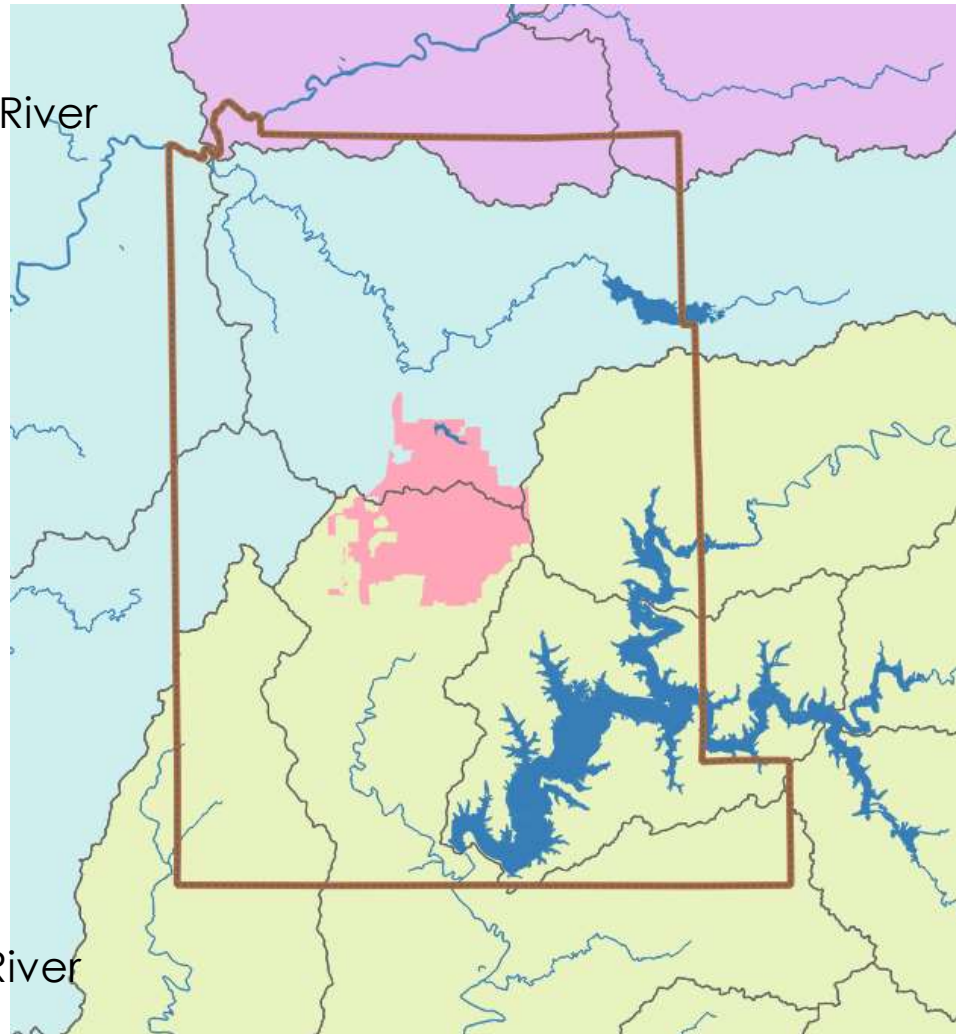


Prepared By
Cindy Martin
March 2004

A closer look...

← Drains to West Fork White River

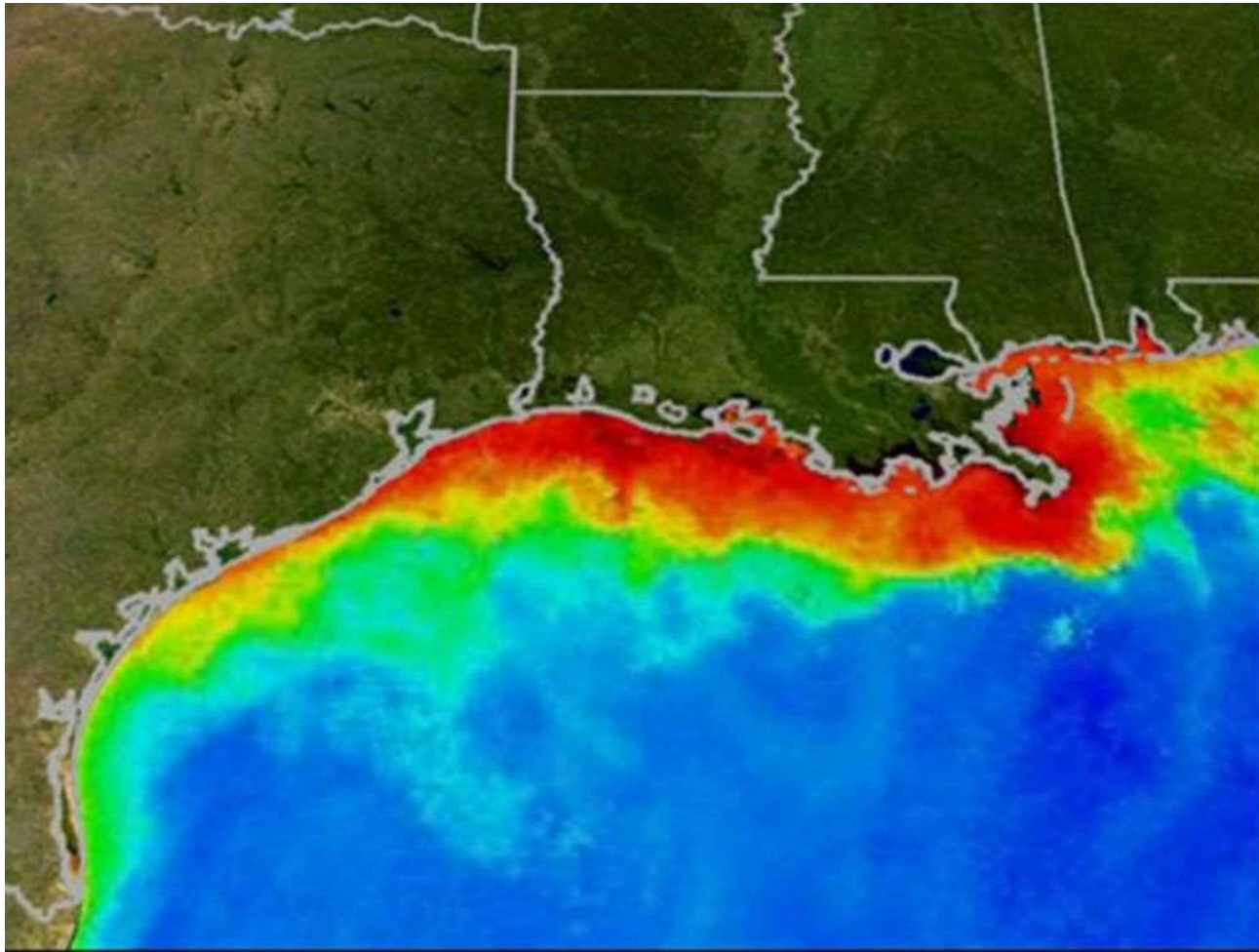
← Drains to East Fork White River



Bloomington Impacts More



Bloomington:
Jordan River
Clear Creek
East Fork of White River
White River
Wabash River
Ohio River
Mississippi River
Gulf of Mexico and beyond



Gulf of Mexico – “Dead Zone”

SEDIMENT



**The #1
pollutant by
volume in the
State of
Indiana**

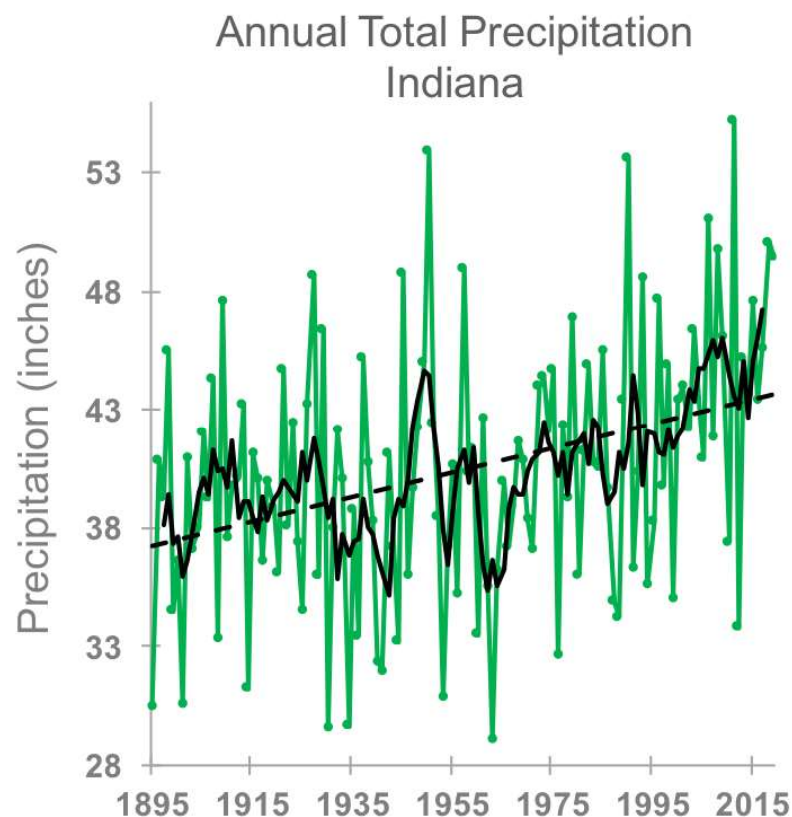
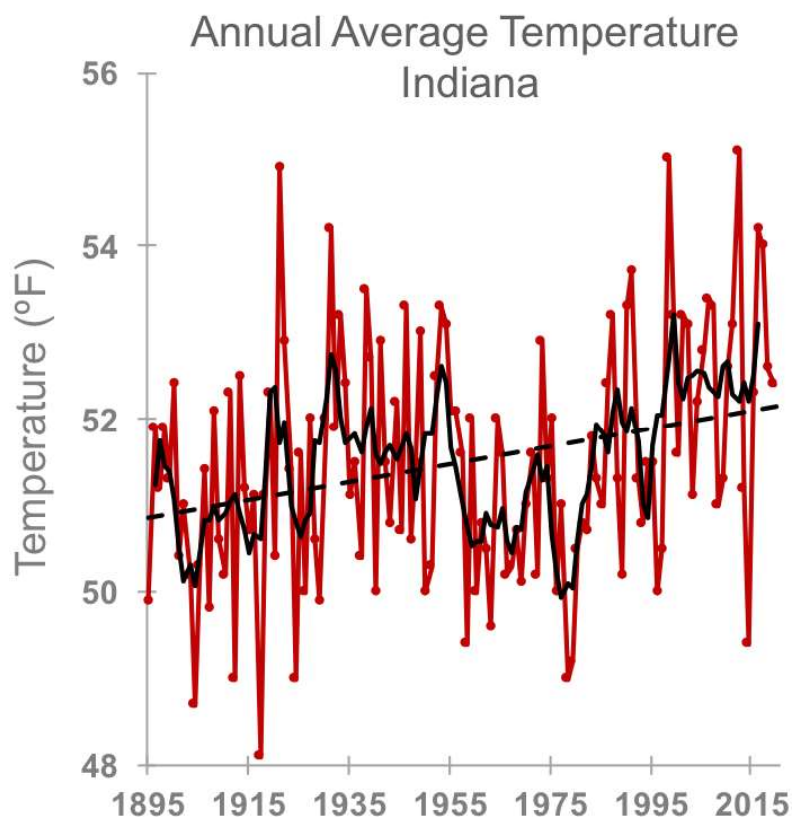
OUR CHANGING CLIMATE

More frequent and intense rainfall events punctuated by longer periods of drought.

**Remember
February 7, 2019?**



Indiana is getting warmer and wetter



Climate Trends 1895-2019: Indiana has warmed 1.3°F and annual precipitation has increased 6.5”.

Reference: Purdue Climate
Change Research Center



The patterns are affecting us individually and societally, including:

- **Infrastructure**
- **Agriculture, Health, Finances**
- **Overall quality of life**

We have an
opportunity to make
a difference.



**MAYOR
JOHN
HAMILTON**

“As climate change makes stormwater challenges more frequent and severe, the city is committed to working with property owners to control flooding and mitigate future damage in environmentally responsible ways.”



RESIDENTIAL STORMWATER PRACTICES

- Rain gardens
- Bioswales
- Dry Creek Beds
- Detention or Retention Ponds
- Ditch Stabilization
- Driveway Culverts

Questions?

Kriste Lindberg
City of Bloomington Utilities
Stormwater Education Specialist
lindberk@Bloomington.in.gov

