

# DRAINING YOUR POOL?

## Follow these simple guidelines...

Draining swimming pools and spas can pollute our waterways, including streams and lakes. The water may contain chemicals — chlorine, bromine, salt and more — that are harmful to our water, wildlife, and ourselves.

All types of chemicals used in pool and spa maintenance must be neutralized before being released into the environment.

The best steps to make sure our waterways remain clean is to...

- Let pool water stand untreated for at least seven (7) days to help allow chlorine or bromine to dissipate.
- Test the pH of the pool water to ensure it is close to neutral, near pH 7 (best would be between 6.5 and 8.5) before draining. Adjust the pH if necessary.
- Remove excess sediment, leaves, and other debris from the water.
- Drain pool water over a well-vegetated area on the owner's property to slow it down and aerate it. Pool water should not be drained directly into a storm drain or a stream. As a courtesy, avoid draining pool water across neighboring properties.
- Drain water at a slow rate so it does not erode stream banks downstream of the pool.

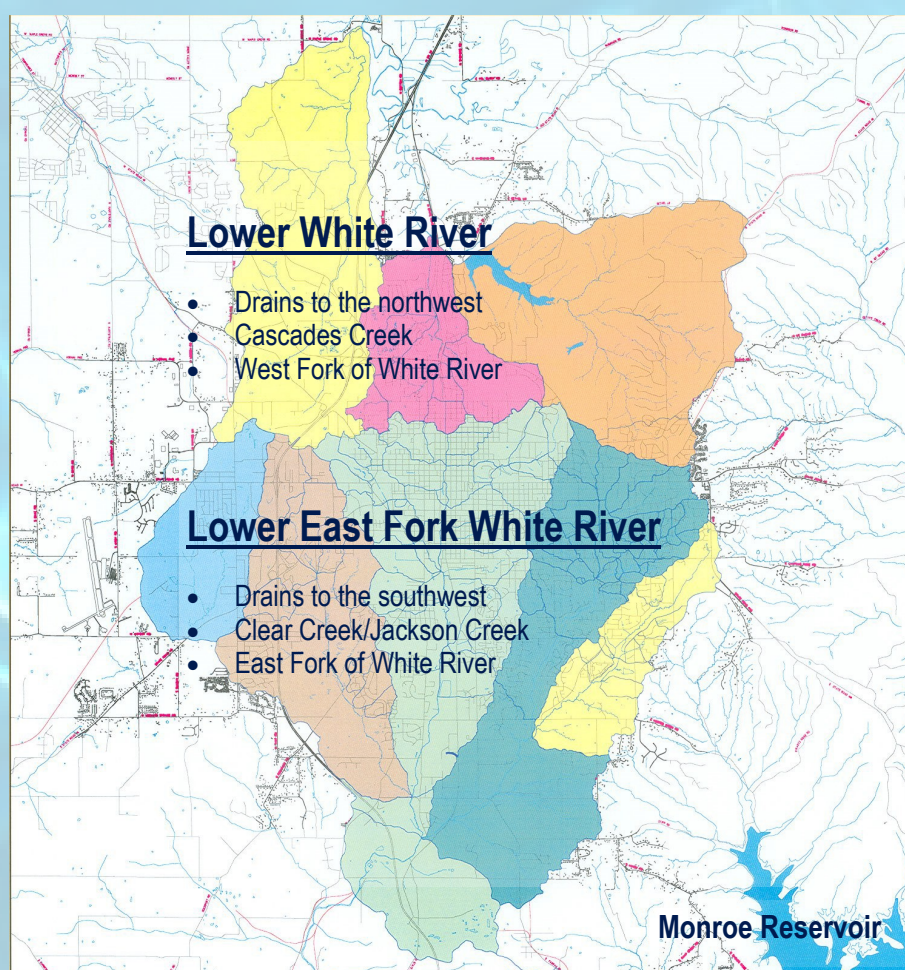
## Two Main Watersheds

The Bloomington area has two main watersheds, or areas of land that drain to particular bodies of water; the dividing line runs east-west, approximately along 11th Street.

**Note:** This is not only a thoughtful thing to do, **it is the law** - see BMC 10.20 "Illicit Stormwater Connection and Discharge", BMC 10.12.020 "Specific Prohibitions", as well as State Statute 327 IAC 15-13-14 "Storm water quality management plan illicit discharge detection and elimination".

Discharging chlorinated (or other chemically saturated) pool and spa water to a storm drain without following water quality recommendations is considered an illicit discharge and is regulated. The City of Bloomington is required to enforce this practice through a mandate. We (as well as the plants and animals) appreciate your cooperation.

You can bring unwanted pool chemicals to the Hazardous Materials Facility at the South Walnut Recycling Center located at 3400 S. Walnut St. or contact the Monroe County Solid Waste Management District, (812) 349-2020.



**BLOOMINGTON  
UTILITIES**

**City of Bloomington Utilities**

stormwater@bloomington.in.gov

(812) 349-3656

[www.bloomington.in.gov/utilities/stormwater](http://www.bloomington.in.gov/utilities/stormwater)