

October  
2021

# KIDS KRAZE

Programs and activities  
offered by



CITY OF BLOOMINGTON  
Parks and Recreation



For more information, contact the Bloomington Parks and Recreation Department at 812-349-3700 or visit us at [bloomington.in.gov/parks](http://bloomington.in.gov/parks).

[btownparks](https://www.instagram.com/btownparks)

[City of Bloomington, IN - Parks and Recreation](https://www.facebook.com/CityofBloomingtonIN-ParksandRecreation)

[BloomingtonParks](https://www.youtube.com/BloomingtonParks)

**Inclusive approach to recreation:** All City of Bloomington Parks and Recreation programs are inclusive to people with and without disabilities. Please contact our Inclusive Recreation Coordinator for more details: Amy Shrake, CTRS, 812-349-3747 or [shrakea@bloomington.in.gov](mailto:shrakea@bloomington.in.gov).

**Programs and events may be modified or cancelled based on local health department guidelines. For updated information, visit [bloomington.in.gov/parks](http://bloomington.in.gov/parks).**

**COVID-19  
SAFETY FIRST**



## Youth scholarships available from the Bloomington Parks Foundation!

For more information about how to apply for a scholarship for any Parks and Recreation program, contact the Bloomington Parks and Recreation office at 812-349-3700, or visit [bloomington.in.gov/node/3874](http://bloomington.in.gov/node/3874). Scholarship applications must be submitted at least two weeks prior to the program registration deadline.



## MOVIES IN THE PARKS

Community Events  
Hotline 812-349-3754



### The Dark Crystal

PG • 1982 • 1 hr 33 min  
Friday, October 1 • 8 p.m.  
Switchyard Park, 1601 S. Rogers St.



\*Celebrate National Hispanic Heritage Month with the Commission on Hispanic and Latino Affairs.

Bloomington Parks and Recreation and the Ryder Film Series present free movies on the big screen in city parks.

Movies begin at dusk; see estimated start times.

Please be aware that the movies have a rating of PG.

We request your assistance in determining if a particular movie is appropriate for your family. **Rain date October 2.**

#### Sponsors:

Amethyst House, Lisa J. Baker, DDS, Bluestone Tree, Choice Realty & Management, Crazy Horse, The Dog House, LLC, ISU The May Agency, The Niese Agency—State Farm, Office Easel Promotions, and World Wide Automotive Service



Saturday,  
October 16  
1-4 p.m.

RCA Community Park, 1400 W. RCA Park Dr.  
Admission is \$5/child • Geared toward ages 1-10 yrs.

For more information, visit [bloomington.in.gov/parks](http://bloomington.in.gov/parks).

Sponsored by:



Lisa J. Baker, DDS  
"Crows while you wait."

## DEARLY DEPARTED CEMETERY TOURS

The Monroe County History Center hosts guided walking tours with reenactors who share secrets that lie beneath the stones—and some haunted history, too!

Saturday, October 16

Rose Hill Cemetery, 1100 W. Fourth St.

5:30-6:30 p.m.— Family-friendly tour

Each tour is \$10 per person. Register by 10/12.

For ages 10 yrs. and up.

This is a walking tour; attendees must be able to walk at least one mile on uneven terrain. Flashlights are recommended.

For more information or to register, visit [bloomington.in.gov/parks/events](http://bloomington.in.gov/parks/events).  
Community Events Hotline: 349-3754



## Not-So-Scary Halloween Party



Get ready for a ghoulish good time as the Banneker gym transforms into a spooky spectacle, complete with games, arts and crafts, and candy too!

Friday, October 8 • 5:30-7:30 p.m.  
Banneker Community Center,  
930 W. Seventh St.

\$10/family • Pay at the door.  
For ages 3-10 yrs. w/parent.

## HOWL AT THE MOON

Friday, October 8  
7:30-8:30 p.m.  
FREE • For all ages

Switchyard Park, 1601 S. Rogers St. —  
Meet at the basketball courts.  
Park in the Grimes Lane parking lot.

All dog owners and animal lovers are invited to a glow-in-the-dark walk in Switchyard Park!

The first 50 dogs receive a glow stick for their collars! All well-behaved, leashed dogs are welcome. For more information, visit [bloomington.in.gov/parks/events](http://bloomington.in.gov/parks/events).

Sponsored by:



## EXCEL TAE KWON DO For all ages.

This class focuses on coordination, discipline and self-confidence in a fun and safe environment. Excel TKD is taught by Master Emeline O'Connor, a 4th-degree black belt with more than 20 years of experience.

**Beginner**—Tuesdays and Thursdays, 5:30-6:30 p.m.  
10/19-12/9 • Register by 10/17 • 350215-C

**Advanced**—Tuesdays, 6:45-7:45 p.m.  
and Thursdays, 5:30-6:30 p.m.

10/19-12/9 • Register by 10/17 • 350215-D

Twin Lakes Recreation Center, 1700 W. Bloomfield Rd.



## Bloomington Pumpkin Launch

Saturday, October 30

Activities include a children's area with fall-themed activities, live music, food vendors, and the festive feel of fall.

Monroe County Fairgrounds, 5700 W. Airport Rd.

Gates open and activities begin at 11 a.m. Launching begins at noon. Spectator admission: \$10 per vehicle.

Event sponsor: **IU Credit Union**

[bloomington.in.gov/pumpkinlaunch](http://bloomington.in.gov/pumpkinlaunch)

## Nature and the Outdoors

Price is per person. Children under age 12 yrs. must be accompanied by a registered adult. Activities may be both inside and outside, so please dress for the weather.

### Bug Fest

Check out cool insects, make a craft, participate in bug-themed activities, and much more. This event is a collaboration of Bloomington Parks and Recreation, Monroe County Parks and Recreation, The WonderLab Museum, Purdue Extension-Monroe County, and Hilltop Gardens at Indiana University. For more information and to pre-register, visit [hilltop.indiana.edu/events-programs-classes/bugfest/index.html](http://hilltop.indiana.edu/events-programs-classes/bugfest/index.html).

Sa 10/2 • 10 a.m.–3 p.m. • FREE • For all ages.

Hilltop Gardens at Indiana University, 2367 E. 10th St. 

### Rekindle the Ancient Fire

This program will go into thorough detail of finding, processing, and using the parts of a bow-drill kit. This includes knife safety, tree identification, history, and techniques. Every participant will leave with a kit and a working knowledge of how to use it, and how to make other kits in the future. Bring a fixed-blade knife if you have one. Instructor: Andrew Naugle

Sa 10/9 • 12:30–4 p.m. • Register by 10/5 • 340006-A

\$8/in-city, \$10/non-city • For ages 12 yrs. and up w/parent.

Lower Cascades Park, 2851 N. Old State Rd. 37—

Meet at the Sycamore Shelter.

### S'mores and Stories

Join us around a crackling fire as we eat s'mores and share stories about the origins of fall traditions. When did s'mores become a fall favorite campfire food? Why do we carve pumpkins? How do other cultures celebrate the fall season? Instructor: Shelbie Porter

Su 10/10 • 6–7 p.m. • Register by 10/6 • 340007-A

\$5/in-city, \$6/non-city • For all ages.

Lower Cascades Park, 2851 N. Old State Rd. 37—

Meet at the Sycamore Shelter.

### Fall Foliage Float

Paddle on Griffy Lake and see fall foliage from a different perspective as you float along. Learn why trees lose their leaves and change color. Boats, paddles, life vests, and binoculars are provided. Children under age 14 yrs. must be accompanied by a registered adult.

Program dependent on water levels at Griffy Lake.

F 10/22 • 5–6:30 p.m. • Register by 10/18 • 340008-A

\$8/in-city, \$10/non-city • For all ages.

Griffy Lake Nature Preserve, 3400 N. Headley Rd.—

Meet at the boathouse.



**NEW!**

### OuterSpatial

Ready to begin your adventure?

Discover new places, navigate scenic trails and make the most of your time by finding City of Bloomington Parks & Recreation on the OuterSpatial mobile app.



City of Bloomington Parks & Recreation

## Griffy Lake Nature Preserve

The boathouse is open through October!

3400 N. Headley Rd. • 812-349-3732

[bloomington.in.gov/griffylake](http://bloomington.in.gov/griffylake)

Boathouse hours: Saturday and Sunday, 9 a.m.–6 p.m.



**KID CITY**  
BREAK DAYS

## Summer fun ... when school's out!

Allison-Jukebox Community Center,  
351 S. Washington St. • 7:30 a.m.–5:30 p.m.  
Break Days are for students in grades K–6.

For more information about Break Days, contact Amy Shrake at 812-349-3747 or [shrakea@bloomington.in.gov](mailto:shrakea@bloomington.in.gov).

BREAK DAY	CODE	in-city FEE	non-city FEE	REGISTRATION AND PAYMENT DUE BY 5 p.m.
Thur., Oct. 7	345101-A	\$40	\$45	9/27
Fri., Oct. 8	345101-B	\$40	\$45	9/27
Tue., Nov. 2	345101-C	\$40	\$45	10/25

 City of Bloomington, IN - Parks and Recreation

 [kidcitybloomington](https://www.instagram.com/kidcitybloomington)

## 2021–2022 season FRANK SOUTHERN ICE ARENA

2100 S. Henderson St.  
[bloomington.in.gov/ice](http://bloomington.in.gov/ice)

Daily public skating sessions begin Oct. 15.  
Skating School registration is open now.



SESSION I (8 sessions)

Oct. 14–Dec. 11

Register by Oct. 13

\$80/in-city, \$90/non-city for all sessions except Figure Skating, which is \$100/in-city, \$110/non-city. For details, visit our website.

Skating School Open House:

Oct. 7, 5:30–7 p.m. and Oct. 9, 10:30 a.m.–noon

### Private Skating Lessons

Mondays, noon–2:30 p.m. and Fridays, 9–11:30 a.m.

For more information, contact Dee Tuttle at [tuttled@bloomington.in.gov](mailto:tuttled@bloomington.in.gov).



## Skate & Scare

Saturday, October 23 • 7–9 p.m.  
\$6 per person, \$3 skate rental • For all ages.

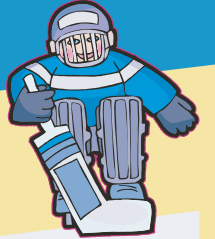
Sponsored by:



## HOUSE HOCKEY

"The COOLEST game in town"

An instructional league for the beginning through advanced hockey player.  
October 18–February 11  
Registration is ongoing.

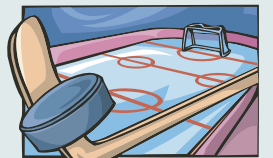


6U (DOB 2016/2015) • 325017-A  
M 6–7 p.m. and F 5:45–6:45 p.m.  
8U (DOB 2014/2013) • 325017-B  
M 6–7 p.m. and F 5:45–6:45 p.m.  
10U (DOB 2012/2011) • 325017-C  
M, W 7–8 p.m.  
12U (DOB 2010/2009) • 325017-D  
M, W 8:15–9:15 p.m.

In-city: \$175 6U/\$260 8U, 10U, and 12U  
Non-city: \$190 6U/\$275 8U, 10U, and 12U  
For more information, contact John Turnbull at [turnbulj@bloomington.in.gov](mailto:turnbulj@bloomington.in.gov) or 812-349-3712.

### Hockey Initiation I

A safe and positive experience for beginning hockey players. The primary focus of instruction is on correct skating, puck introduction, active games, and hockey basics. Equipment required: a bicycle helmet, hockey stick, and a pair of any type of gloves.



Su 10/31–12/12 • 1:45–2:45 p.m.

Register by 10/29 • 325018-A

\$55/in-city, \$60/non-city • For ages 5–14 yrs.