

ADDENDUM NO. 1

TO THE

DRAWINGS AND SPECIFICATIONS

FOR THE

South Walnut Street (Winslow to Ridgeview) Sidewalk Project

Issued From: The City of Bloomington
Planning and Transportation Department
Post Office Box 100
401 North Morton Street, Suite #130
Bloomington, Indiana 47404

Issue Date: November 30, 2021

Letting Date: December 20, 2021

This Addendum No.1 to the drawings and specifications shall supplement, amend and become a part of the Bid documents, plans, and specifications for the South Walnut Sidewalk (Winslow to Ridgeview) Sidewalk Project. All Bids and construction contracts shall be based on these modifications to the original contract documents. Bidders shall acknowledge receipt of this Addendum on the Bid Form. Failure to do so may subject the Bidder to disqualification.

Item No. 1: ADDITIONAL INFORMATION OR CLARIFICATIONS – LETTING DATE

The letting date for this project shall move from December 6th, 2021 to December 20th 2021. Sealed bids shall be received by the Department of Public Works, at City Hall, 401 North Morton Street, Atrium, Bloomington, Indiana, at or before 11:30 AM local time on December 20th, 2021. Bids will be publicly opened and read aloud at 12:00 Noon local time on December 20th, at a virtual meeting. Any bids received after the designated time will be returned unopened. Bids will be reviewed and the award may be made at the December 21th, 2021, virtual meeting or a subsequent virtual meeting of the Board of Public Works.

Item No. 2: ADDITIONAL INFORMATION OR CLARIFICATIONS – INSPECTION HOLES

The Contractor shall complete inspection holes to verify the depth and location of gas lines prior to ordering stormwater structures. Required inspection hole locations are provided in the attached document. The results of the inspection holes shall be provided to the Engineer at least ten days before the contractor orders materials. If unexpected conflicts are identified, then the Engineer will provide updated structure information to the Contractor. Inspection holes will be paid for at the contract unit price per each, Pay Item: 107-09358 Inspection Hole, Deeper Than 3 FT. The cost of all work pertaining to inspection holes shall be included in the cost of this pay item. Inspection hole work will have no effect on the allowable project duration days. The contractor shall be fully responsible for any delays or additional costs that arise if inspection holes are not completed as directed within this item.

An updated Schedule of Items is attached to this addendum. Note that this update also deletes some previously itemized removal items. Any removal items that are no longer listed in the Schedule of Pay Items shall be included in the cost of "Clearing Right-of-Way" as appropriate.

Item No. 3: ADDITIONAL INFORMATION OR CLARIFICATIONS - SPECIAL CONDITIONS

The following special conditions shall apply to this project in addition to the special conditions provided within the originally published bid packet.

BARRICADES, TRAFFIC SIGNS AND LIGHTS:

The Contractor shall erect barricades and maintain traffic signs and lights wherever required for safeguarding the public and they shall be acceptable to the Engineer.

TRAFFIC SIGNS:

All signs shall conform to current Indiana Manual on Uniform Traffic Control Devices and Section 801 of the Specifications. See INDOT Standard Drawings E 801-TCSN-01 thru E801-TCSN-06 for Traffic Control Sign Details.

DECREASED OR INCREASED QUANTITIES OF WORK:

These Special Provisions shall not be considered as a waiver of, nor shall they invalidate the right of the Engineer to increase or decrease quantities of work.

UTILITY INFORMATION:

All applicable sections of 105.06 and 107.20 shall apply except as amended elsewhere within the contract documents and as follows: Coordination with any applicable utility is the sole responsibility of the Contractor.

The Contractor shall be responsible for contacting the applicable utilities to coordinate his work prior to the commencement of any construction activities.

CenterPoint Energy:

CenterPoint Energy has both an 8" high pressure gas main and a 4" medium pressure gas line running the length of the project. The majority of the sidewalk construction will occur directly over the 8" HP Main, and there will be several crossings with the proposed storm utilities.

Contractor shall contact CenterPoint energy at least 1 day in advance whenever excavation is expected to occur within 18" of the 8" high pressure gas main. Contractor shall not proceed with excavation until a CenterPoint representative arrives on site. No vibratory compaction equipment may be used within 10' of the gas lines. Compaction must be performed by rolling or tamping only. Contractor shall not set equipment directly above 8" high pressure gas main, or walk equipment laterally above existing gas main. Contractor shall use protective matting if placement or movement of heavy equipment above gas line is unavoidable. Cross equipment over gas main at right angles.

CenterPoint Contacts: Tyler DePriest 812-330-4061 Tyler.DePriest@centerpointenergy.com
Timmy Langston 812.348.6703 timothy.langston@centerpointenergy.com

City of Bloomington Utilities (CBU):

Public utility infrastructure owned and operated by CBU within the project limits includes water, sanitary sewer, and storm drainage. No conflict with water or sewer infrastructure is anticipated. However, in compliance with IDEM requirements, contractor shall use water grade AWWA C900 DR18 pipe for storm drain construction where proposed storm drains will cross water lines within 18" vertical clearance, or approach waterlines within 10' horizontally. Storm manholes or inlets installed within 8' of water lines shall have the interior of the structure coated with waterproof epoxy coating. If during construction there is a relocation required within the project limits, CBU would require 7 days' notice to schedule relocation.

CBU Contacts: Greg Nettleton: 812-349-3625 nettletg@bloomington.in.gov
Phil Peden: 812-349-3634 pedenp@bloomington.in.gov
Nancy Axsom: 812-349-3689 axsomn@bloomington.in.gov

REMOVAL ITEMS:

The following removal items are not itemized for payment on an individual unit basis. These items include, but are not necessarily limited to, trees, brush, vegetation, pipes, fence, signs, gravel surfacing, paved side ditches and any other removal items not otherwise specified or directly paid for in the Schedule of Pay Items. The cost of labor, equipment, materials and all other incidentals necessary to perform the required work in accordance with 201 and 202 shall be included in the cost of "Clearing Right-of-Way" as appropriate.

PAVEMENT REMOVAL

This work includes sawcutting as required at limits of asphalt pavement removal to the full depth of the pavement section. Remaining pavement shall have a clean flush edge to enable the proper placement of new improvements.

The removal of pavement will be measured by the square yard, and will be paid for as "Pavement Removal, Modified". The cost of pavement removal shall include the cost of required sawcutting.

HMA PATCHING, MODIFIED

This work shall include placement of flowable fill (as required), 9" depth of 4,000 psi concrete, 2" HMA Surface, and joint sealant per detail 8/C801. The patch shall generally be used to restore the pavement section between the existing travel lane and the proposed curb and gutter.

HMA Patching will be measured by the square yard and paid for as "HMA Patching, Modified". All materials used shall conform to INDOTSS. The contract unit price shall include the cost of all associated materials, including flowable fill, 4,000 psi concrete, HMA surface, and joint sealant.

PCCP, 8 IN.

This work includes all formwork, reinforcing steel, placement, and finishing of Portland Cement Concrete Paving (PCCP) per detail 1/C801, "Heavy Duty Concrete Paving". All material and execution shall conform to INDOTSS.

Heavy Duty Concrete Paving will be measured by the square yard and paid for as "PCCP, 8 IN". The contract unit price shall include the cost of all associated material, equipment, and labor, including tooled or sawcut joints, expansion joint material, and sealant. Aggregate base will be paid for separately.

SIDEWALK, CONCRETE

This work includes all formwork, placement, and finishing of concrete sidewalk per detail 2/C801. All material and execution shall conform to INDOTSS.

Concrete sidewalk will be measured by the square yard and paid for as "Sidewalk, Concrete". The contract unit price shall include the cost of all associated material, equipment, and labor, including tooled or sawcut joints, expansion joint material, and sealant. Aggregate base will be paid for separately.

CURB, CONCRETE, MODIFIED (TALL CURB)

This work includes all formwork, reinforcing steel, placement, and finishing of tall standing concrete curb per detail 6/C801. All material and execution shall conform to INDOTSS.

Tall Standing Concrete Curb will be measured by the linear foot and paid for as "Curb, Concrete, Modified (Tall Curb)". The contract unit price shall include the cost of all associated material, equipment, and labor, including tooled or sawcut joints, expansion joint material, and sealant. Aggregate base will be paid for separately.

PIPE, HDPE DUAL WALL

This work includes all trench excavation, crushed stone bedding, furnishing and installation of pipe material, fittings (as required), and crushed stone primary backfill. All material and execution shall conform to INDOTSS.

Storm drainage piping will be measured by the linear foot and paid for as "PIPE, HDPE DUAL WALL, CIRCULAR, (diameter as indicated)". The contract unit price shall include the cost of all associated material, equipment, and labor, including crushed stone bedding and primary backfill, and all necessary fittings, couplings, and connections.

PIPE, PVC, AWWA C900

This work includes all trench excavation, crushed stone bedding, furnishing and installation of pipe material, fittings (as required), and crushed stone primary backfill. All material and execution shall conform to INDOTSS.

Contractor shall use water grade AWWA C900 DR 18 PVC pipe for storm drain construction where proposed storm drains will cross water lines within 18" vertical clearance, or approach existing water lines within 10' horizontally.

AWWA C900 PVC Storm drainage piping will be measured by the linear foot and paid for as "PIPE, PVC, AWWA C900, (diameter as indicated)". The contract unit price shall include the cost of all associated material, equipment, and labor, including crushed stone bedding and primary backfill, and all necessary fittings, couplings, and connections.

PIPE, TYPE 4, HDPE DUAL WALL, PERFORATED

This work includes all trench excavation, geotextile wrap, no. 8 crushed stone bedding, furnishing and installation of pipe material, fittings (as required), and no. 8 crushed stone primary backfill per detail 12/C801 "Underdrain Detail". All material and execution shall conform to INDOTSS.

Perforated underdrain piping will be measured by the linear foot and paid for as "PIPE, TYPE 4, HDPE DUAL WALL, CIRCULAR, 4 IN., PERFORATED". The contract unit price shall include the cost of all associated material, equipment, and labor, including geotextile fabric wrap, crushed stone bedding and primary backfill, and all necessary fittings, couplings, and connections.

RIVER ROCK, TYPE 5L

This work includes furnishing and placement of river rock surface material over perforated underdrain as indicated by detail 12/C801. River rock shall consist of rounded particles, 1" - 4" in size, with less than 5% sand, silt, or clay by weight.

River rock will be measured by the ton and paid for at the contract unit price for "RIVER ROCK TYPE 5L"

INLET

This work includes excavation, crushed stone bedding, furnishing and installation of precast concrete inlet structure, and casting adjusted to finish grade. Work item also includes connection to storm drain piping and finish work at pipe penetrations. All material and execution shall conform to INDOTSS.

Storm drain inlets will be measured and paid for by each, according to pay item "INLET, (Type)". The contract unit price shall include the cost of all associated material, equipment, and labor, crushed stone bedding, precast concrete structure, castings, risers, gaskets, and sealants.

MANHOLE

This work includes excavation, crushed stone bedding, furnishing and installation of precast concrete manhole structure, and casting adjusted to finish grade. Work item also includes connection to storm drain piping and finish work at pipe penetrations. All material and execution shall conform to INDOTSS. Storm drain manholes will be measured and paid for by each, according to pay item "MANHOLE, C4". The contract unit price shall include the cost of all associated material, equipment, and labor, crushed stone bedding, precast concrete structure, castings, risers, gaskets, and sealants.

WATERPROOF EPOXY COATING

This work includes the application of waterproof epoxy coating to the interior of storm drainage manholes and/or inlet structures as indicated on the project plans. Coating shall be applied where such structures are located within 8' of existing water utilities. Material and Installation shall conform to the following:

1. Material: Quality epoxy resin manufactured for the purpose of waterproofing the interior of concrete storm or sanitary manhole structures.
 - a. Epoxy Coating must be moisture tolerant and capable of being applied on a wet surface in a humid environment (up to 100% relative humidity).
 - b. Epoxy Coating shall adhere to concrete surface with minimum pull-off strength of 500 psi per ASTM D7234.
 - c. Water Absorption per ASTM D1653 <0.1g/sq.m.
 - d. Acceptable Manufacturers Include:
 - 1) Epoxytec

- 2) CLADLINER
 - 3) Spectrashield
2. Installation: Waterproof Epoxy Coating shall be installed per manufacturer recommendation.

Epoxy Coatings shall be measured per each structure, and paid for according to pay item "WATERPROOF EPOXY COATING". The contract unit price shall include the cost of all associated material, equipment, and labor.

Item No. 4: Attached revised pay items sheet.

	<p>CERTIFIED BY: <u>Neil Kopper</u></p> <p>NEIL KOPPER SENIOR PROJECT ENGINEER CITY OF BLOOMINGTON, IN</p>
--	---

Acknowledge receipt of the addendum by representing it on the Bid Form in Section B and submitting a signed copy with your quote proposal.

RECEIVED BY: CONTRACTOR (FIRM AND ADDRESS)

SIGNATURE: _____ **DATE:** _____

PRINTED NAME: _____

TITLE: _____



Project Title : South Walnut Street (Winslow to Ridgeview) Sidewalk

LINE	ITEM	DESCRIPTION	Approximate Quantity and Units	UNITS	UNIT PRICE	BID AMOUNT
001	105-06845	CONSTRUCTION ENGINEERING	1	LS	-	-
002	109-08359	LIQUIDATED DAMAGES	1	DOL	-	-
003	110-01001	MOBILIZATION AND DEMOBILIZATION	1	LS	-	-
004	201-52370	CLEARING RIGHT OF WAY	1	LS	-	-
005	202-02279	CURB AND GUTTER, REMOVE	175	LFT	-	-
006	202-02637	PIPE ABANDON AND GROUT FILL	50	LFT	-	-
007	202-02241	PAVEMENT REMOVAL, MODIFIED	700	SYS	-	-
008	203-02000	EXCAVATION, COMMON	750	CYS	-	-
009	203-02010	EXCAVATION, ROCK	30	CYS	-	-
010	205-12108	STORM WATER MANAGEMENT BUDGET	8500	DOL	-	-
011	301-12234	COMPACTED AGGREGATE NO 53	320	TON	-	-
012	304-07489	HMA PATCHING, MODIFIED	252	SYS	-	-
013	306-08034	MILLING, ASPHALT, 1 1/2 IN.	115	SYS	-	-
014	402-07434	HMA SURFACE, TYPE C	15	TON	-	-
015	402-07439	HMA INTERMEDIATE, TYPE C	10	TON	-	-
016	406-05521	ASPHALT FOR TACK COAT	232	SYS	-	-
017	502-06999	PCCP, 8 IN.	105	SYS	-	-
018	604-06070	SIDEWALK, CONCRETE	723	SYS	-	-
019	604-08086	CURB RAMP, CONCRETE	2	SYS	-	-
020	604-12083	DETECTABLE WARNING SURFACES	3	SYS	-	-
021	605-06120	CURB, CONCRETE (VERTICAL)	36	LFT	-	-
022	605-06140	CURB AND GUTTER, CONCRETE	1367	LFT	-	-
023	605-06155	CURB AND GUTTER, CONCRETE, MODIFIED (MOUNTABLE)	77	LFT	-	-
024	605-06126	CURB, CONCRETE, MODIFIED (TALL CURB)	224	LFT	-	-
025	606-03096	RIVER ROCK TYPE 5L	5	TONS	-	-
026	616-06406	RIPRAP, REVETMENT	25	SYS	-	-
027	616-12246	GEOTEXTILE FOR RIPRAP	25	SYS	-	-
028	621-04978	SEED MIXTURE, WITH STRAW MULCH	990	SYS	-	-
029	107-09358	INSPECTION HOLE, DEEPER THAN 3 FT.	6	EACH	-	-

CONTINUED TO NEXT PAGE



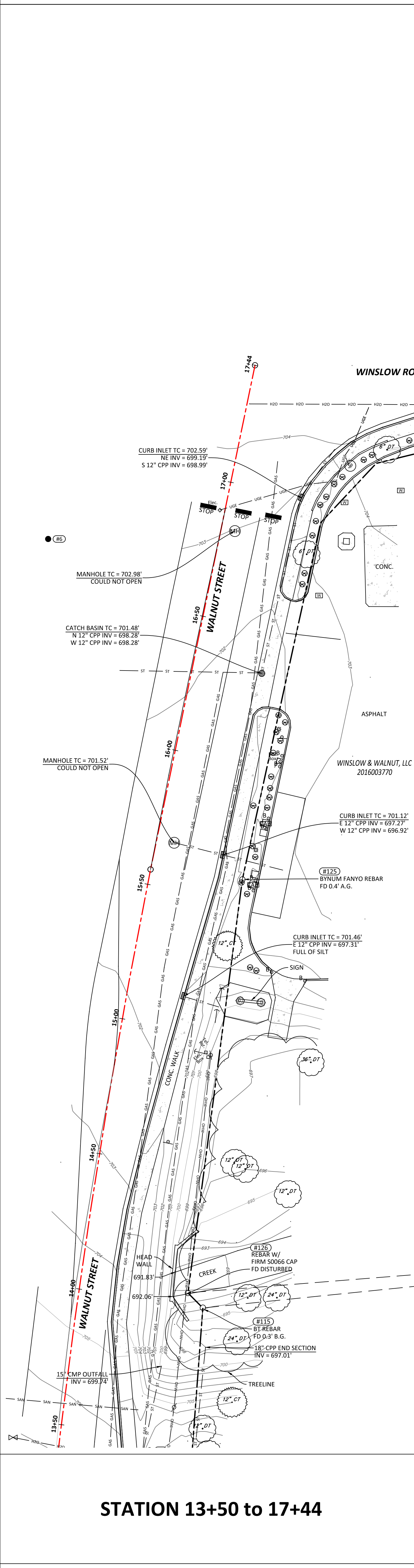
Project Title : South Walnut Street (Winslow to Ridgeview) Sidewalk

LINE	ITEM	DESCRIPTION	Approximate Quantity and Units	UNITS	UNIT PRICE	BID AMOUNT
030	621-06570	TOPSOIL	165	CYS	-	-
031	621-02770	EROSION CONTROL BLANKET	310	SYS	-	-
032	622-05646	PLANT, DECIDUOUS TREE, MULTI-STEM, 96 IN. TO 120 IN.	8	EACH	-	-
033	622-05650	PLANT, DECIDUOUS TREE, SINGLE STEM, OVER 2 IN. TO 2.5 IN.	21	EACH	-	-
034	715-05100	PIPE, HDPE DUAL WALL, CIRCULAR, 6 IN.	30	LFT	-	-
035	715-05101	PIPE, HDPE DUAL WALL, CIRCULAR, 12 IN.	900	LFT	-	-
036	715-05104	PIPE, HDPE DUAL WALL, CIRCULAR, 18 IN.	80	LFT	-	-
037	715-05108	PIPE, HDPE DUAL WALL, CIRCULAR, 24 IN.	60	LFT	-	-
038	715-05200	PIPE, TYPE 4, HDPE DUAL WALL, CIRCULAR, 4 IN., PERFORATED	320	LFT	-	-
039	715-46000	PIPE END SECTION, DIAMETER 12 IN.	1	EACH	-	-
040	715-90715	PIPE PVC, AWWA C900, 12 IN	80	LFT	-	-
041	718-04986	CLEANOUT	2	EACH	-	-
042	720-45030	INLET, E7	2	EACH	-	-
043	720-45045	INLET, J10	12	EACH	-	-
044	720-45410	MANHOLE, C4	2	EACH	-	-
045	720-98555	INLET, C15	1	EACH	-	-
046	720-99500	WATERPROOF EPOXY COATING	1	EACH	-	-
047	801-06775	MAINTAINING TRAFFIC	1	LS	-	-

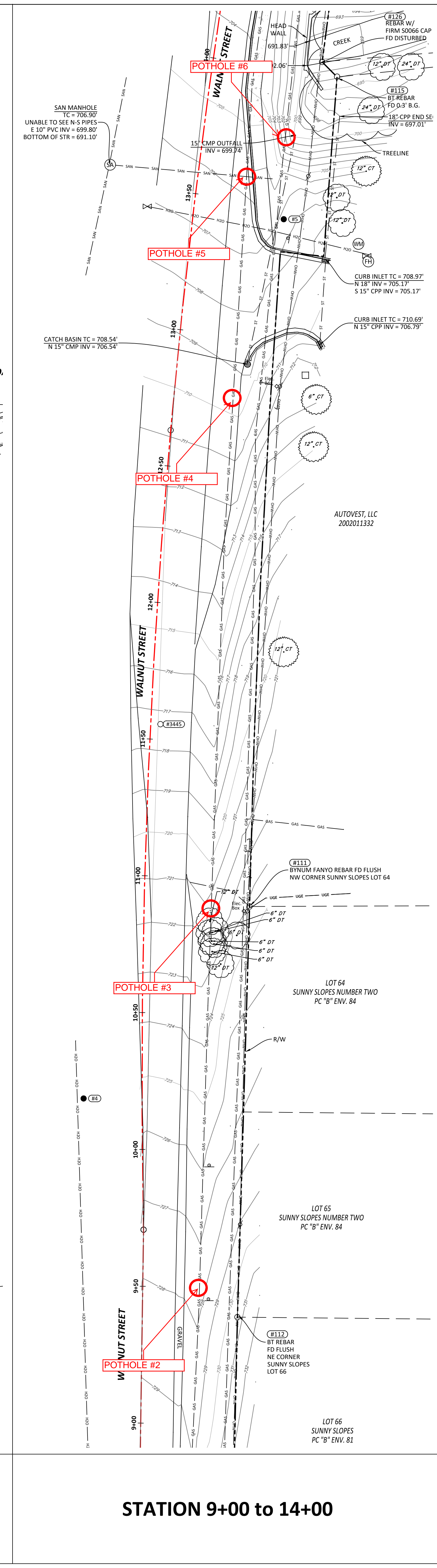
TOTAL PROJECT BID:	-
---------------------------	---

Bidder acknowledges that

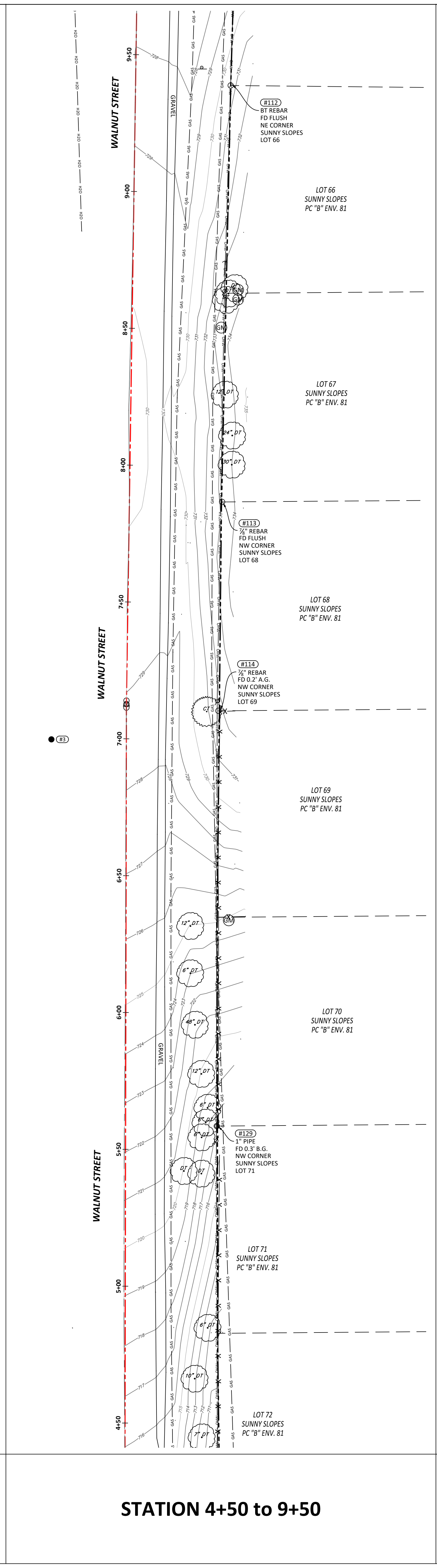
- each Bid Unit Price includes an amount considered by Bidder to be adequate to cover Contractor's overhead and profit for each separately identified item, and
- estimated quantities are not guaranteed, and are solely for the purpose of comparison of Bids, and final payment for all Unit Price Work will be based on actual quantities, determined as provided in the Contract Documents.



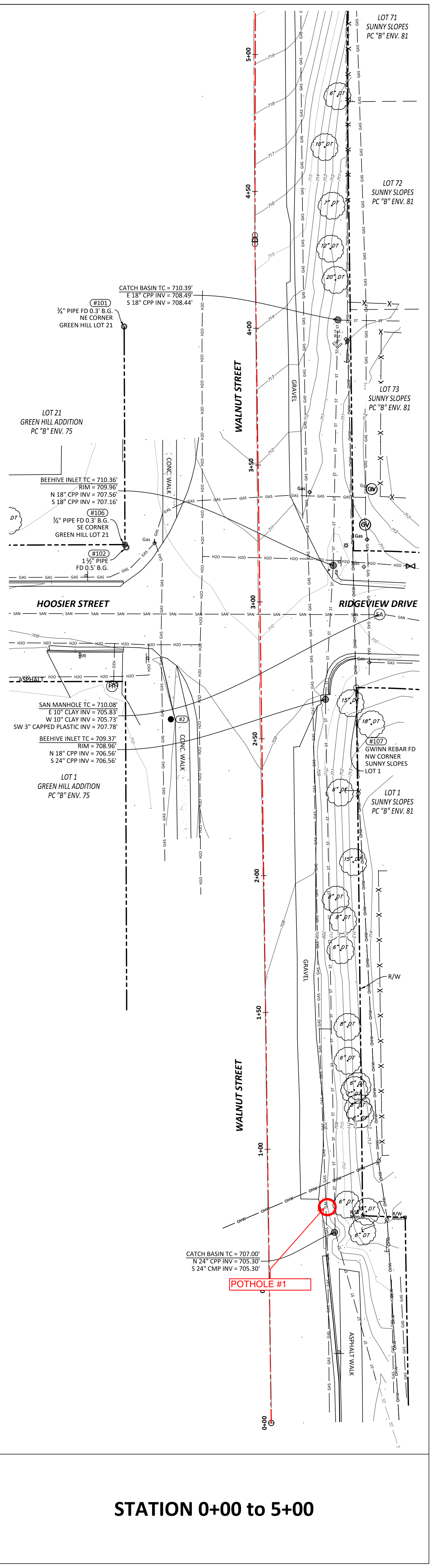
STATION 13+50 TO 17+44



STATION 9+00 TO 14+00

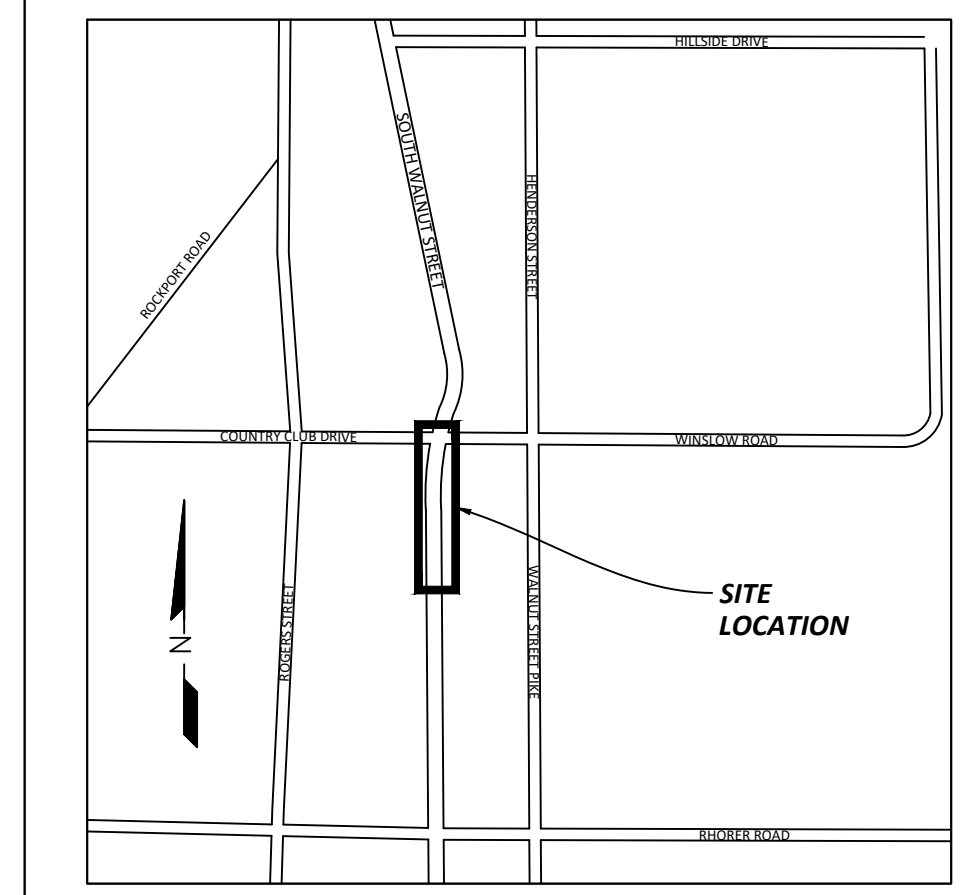


STATION 4+50 TO 9+50



STATION 0+00 TO 5+00

LOCATION MAP



NOTES

- FIELD WORK PERFORMED DECEMBER 24, 2020 - JANUARY 15, 2021.
- CONTOURS REPRESENT 1-FOOT INTERVALS.
- UTILITIES SHOWN HEREON ARE PER OBSERVED ABOVE GROUND EVIDENCE AND FROM UTILITY MARKINGS PLACED ON THE GROUND BY INDIANA'S MEMBER UTILITIES (SEE TICKETS BELOW). MEMBER UTILITIES DO NOT LOCATE PRIVATE LINES OR FACILITIES. MEMBER UTILITIES DO NOT LOCATE SERVICE LINES NOR ALL UTILITIES WHEN A SURVEY IS THE PURPOSE OF THE TICKET. OVERHEAD UTILITIES ARE IDENTIFIED AS OVERHEAD WITHOUT SPECIAL INVESTIGATION AS TO THE TYPE OR NATURE. STORM AND SANITARY INVERT ELEVATIONS, PIPE SIZES, AND MATERIALS ARE ALL APPROXIMATE BASED ON LIMITED INFORMATION AVAILABLE FROM THE SURFACE. NO STRUCTURES WERE ENTERED TO ACCURATELY MEASURE PIPE SIZES OR TO VERIFY PIPE TYPE AND MATERIAL. STRUCTURE GRATES AND COVERS SHOWN SHOULD NOT BE ASSUMED TO BE THE CENTER OF THE BELOW GROUND STRUCTURE. ALL UTILITIES INCLUDING LOCATIONS AND SIZES NEED TO BE VERIFIED PRIOR TO CONSTRUCTION EFFORTS.
- THE FOLLOWING ARE THE INDIANA 811 TICKET NUMBERS FOR THIS PROJECT: 2101122468, 2101122490, 2101122503, 2101122598, 2101122604, 2101122616, 2101122641.
- THE FOLLOWING ARE THE MEMBER UTILITIES NOTIFIED BY INDIANA 811:
 AT&T DISTRIBUTION
 BLOOMINGTON TRAFFIC DIV.
 BLOOMINGTON UTILITIES
 COMCAST
 DUKE ENERGY
 SMITHVILLE TELEPHONE CO.
 VECTREN
 COMMUNICATIONS
 TRAFFIC LIGHTS
 WATER, SEWER
 CABLE TV
 ELECTRIC
 TELEPHONE
 GAS
- The utilities shown on this survey represent Quality Level B standard of care. The American Society of Civil Engineers (ASCE) has developed an important standard of care guideline, Standard Guideline for the Collection and Depiction of Existing Subsurface Utility Data, C/ASCE 38-02. This standard guideline describes four quality levels of utility depiction: Quality Level D - information derived from existing records or oral recollections; Quality Level C - information obtained by surveying and plotting visible above-ground utility features and by using professional judgment in correlating this information to Quality Level D; Quality Level B - information obtained through the application of appropriate surface geophysical methods to determine the existence and approximate horizontal position of subsurface utilities; Quality Level A - precise horizontal and vertical location of utilities obtained by the actual exposure and subsequent measurement of subsurface utilities, usually at a specific point. To order a copy of ASCE Standard 38-02, please go to the ASCE Bookstore: <http://www.pubs.asce.org/> or call 1-800-548-2723.
- THIS DRAWING IS NOT INTENDED TO BE REPRESENTED AS A RETRACEMENT OR ORIGINAL BOUNDARY SURVEY, A ROUTE SURVEY, OR A SURVEYOR LOCATION REPORT.

CONTROL POINTS

HORIZONTAL DATUM: Reference Frame NAD 83(2011) Epoch 2010.0000, Indiana State Plane Coordinates West Zone, U.S. Survey Feet.
 VERTICAL DATUM: NAVD88 (Computed using Geoid 12A), U.S. Survey Feet.

POINT #	NORTHING	EASTING	ELEVATION	DESCRIPTION
1	1414628.5905	3109347.6508	707.35	MAG NAIL, offset
2	1414960.7756	3109277.6971	709.37	5/8" Rebar w/ Cap
3	1415403.4435	3109281.5364	728.83	5/8" Rebar w/ Cap
4	1415722.2379	3109290.8451	724.90	5/8" Rebar w/ Cap
5	1416043.4889	3109363.9825	707.33	5/8" Rebar w/ Cap
6	1416376.4435	3109326.9424	702.69	5/8" Rebar w/ Cap

LEGEND

- A YARD LIGHT
- ⊕ LIGHT POLE
- ⊕ SIGNAL POLE
- ⊕ UTILITY POLE
- ⊕ QUIP WIRE
- ⊕ CATCH BASIN
- ⊕ CURB INLET
- ⊕ ELECTRIC MH
- ⊕ MANHOLE
- ⊕ PHONE MH
- ⊕ SANITARY MH
- ⊕ SIGNAL MH
- ⊕ STEAM MH
- ⊕ STORM MH
- ⊕ WATER MH
- ⊕ ELEC. METER
- ⊕ CLEANOUT
- ⊕ GAS METER
- ⊕ GAS VALVE
- ⊕ WATER VALVE
- ⊕ FIRE HYDRANT
- ⊕ SPR. HOSEBOX
- ⊕ SPRINKLER
- ⊕ FENCE
- ⊕ GUARDRAIL
- ⊕ OVERHEAD WIRES
- ⊕ UNDER ELEC.
- ⊕ GAS LINE
- ⊕ SAN SEWER LINE
- ⊕ STORM SEWER LINE
- ⊕ UNDER TELEPHONE
- ⊕ EXISTING WATER LINE
- ⊕ CHILLED WATER LINE
- ⊕ SIGN
- ⊕ R.O.M. MON. MONITORING WELL
- ⊕ BOLLARD
- ⊕ BORE HOLE
- ⊕ DOWNSPROUT
- ⊕ GATE POST
- ⊕ POLE
- ⊕ PARKING METER
- ⊕ SPIGOT
- ⊕ T-POST
- ⊕ WOOD POST
- ⊕ PARKING SPACES
- ⊕ PHONE VAULT
- ⊕ STEAM VAULT
- ⊕ VALVE VAULT
- ⊕ AC UNIT
- ⊕ PHONE BOOTH
- ⊕ BIRD FEEDER
- ⊕ MAILBOX
- ⊕ PROP. TANK
- ⊕ PARKING BLOCK
- ⊕ FD AXEL
- ⊕ FD BRASS DICK
- ⊕ FD COT GIN SPDL
- ⊕ FD CHISELED X
- ⊕ SET CHISELED X
- ⊕ SET DRILL HOLE
- ⊕ FD HARBOR MON.
- ⊕ SET HARBOR MON.
- ⊕ SET HUB/TACK
- ⊕ FD REBAR
- ⊕ SET REBAR
- ⊕ FD MAG NAIL
- ⊕ SET MAG NAIL
- ⊕ SET NAIL
- ⊕ FD PIPE
- ⊕ FD RR SPIKE
- ⊕ SET RR SPIKE
- ⊕ FD STONE
- ⊕ RECORDED B&D
- ⊕ MEASURED B&D
- ⊕ CALCULATED B&D
- ⊕ (PROP) PROPORTIONAL DIST.
- ⊕ A.G. ABOVE GROUND
- ⊕ B.G. BELOW GROUND
- ⊕ CONF. TREE
- ⊕ DECID. TREE
- ⊕ SHRUB
- ⊕ PHONE RISER-BOX
- ⊕ TV RISER-BOX
- ⊕ ELEC. RISER-BOX
- ⊕ GAS RISER-BOX

BRCJ
 LAND SURVEYING • CIVIL ENGINEERING • GIS
 1351 West Tapp Road Bloomington, Indiana 47403
 Phone: 812-336-8277 www.brcjvll.com

CITY OF BLOOMINGTON

PRELIMINARY NOT FOR CONSTRUCTION

SOUTH WALNUT STREET SIDEWALK IMPROVEMENTS
 SOUTH WALNUT STREET
 BLOOMINGTON, INDIANA

BRCJ Project No: 10525
 Inspection Hole Locations

EXISTING SITE CONDITION PLAN

Scale: 1" = 20'

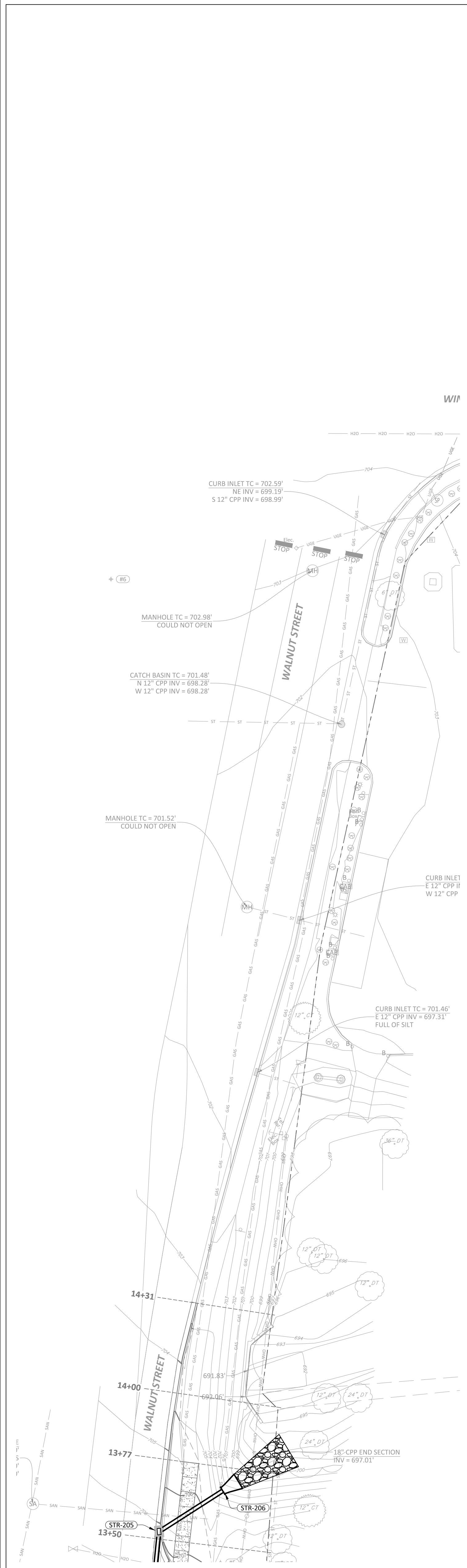
Date: 2021-10-27
 Issue: 100% CONSTRUCTION DOCUMENTS

REVISION SCHEDULE

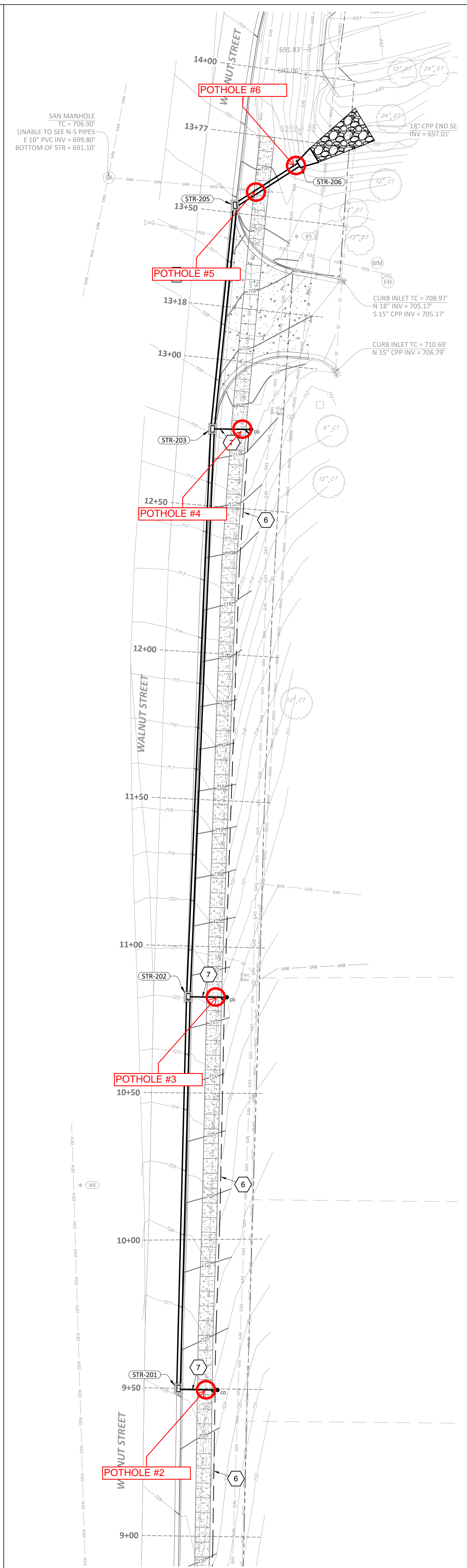
Rev. #	Rev. Description:	Issue Date

Drawn By: DLN
 Designed By: DLN
 Checked By: WSR

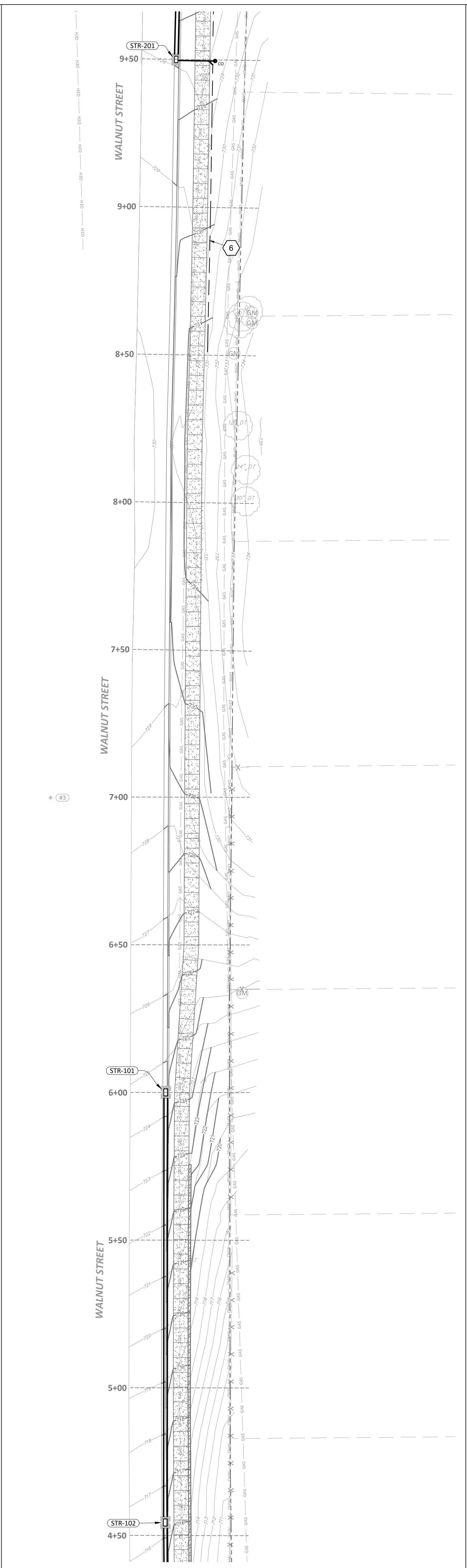
C101



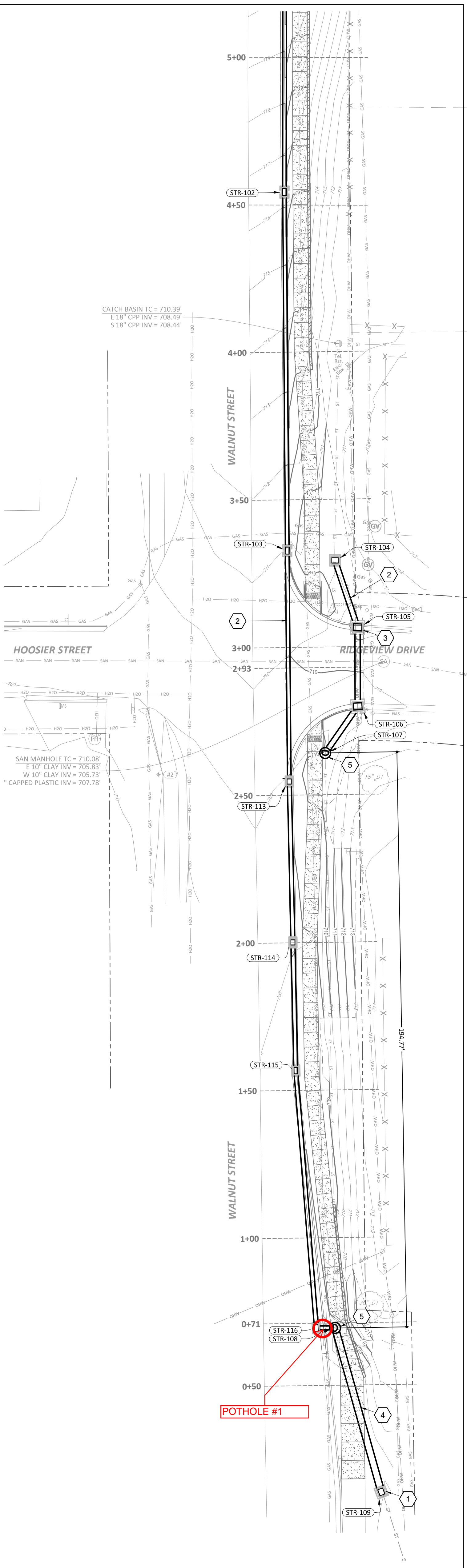
STATION 13+50 to 17+44



STATION 9+00 to 14+00



STATION 4+50 to 9+50



STATION 0+00 to 5+00

GENERAL NOTES

- A. REFER TO DEMOLITION PLANS FOR SEQUENCE OF UTILITY REPLACEMENT TO ENSURE CONTIGUOUS SERVICE OF ALL UTILITIES.
- B. CONTRACTOR SHALL BE RESPONSIBLE FOR CUTTING AND PATCHING AS REQUIRED TO COMPLETELY INSTALL THE WORK INDICATED.
- C. CONTRACTOR SHALL COORDINATE EXACT UTILITY LOCATIONS WITH THE OWNER AND LOCAL UTILITY COMPANIES PRIOR TO COMMENCING ANY WORK. CONTACT THE INDIANA UNDERGROUND PLANT PROTECTION SERVICES, INC. AT 1-800-382-5544 AND OTHER UTILITIES PRIOR TO ANY EXCAVATION ON THE SITE.
- D. ALL WORK ASSOCIATED WITH WATER AND SEWER SYSTEMS SHALL COMPLY WITH THE STANDARDS & REQUIREMENTS OF THE INDIANA DEPT. OF ENVIRONMENTAL MANAGEMENT (IDEM), THE INDIANA STATE DEPARTMENT OF HEALTH (ISHH), THE AMERICAN WATER WORKS ASSOCIATION (AWWA), THE GREAT LAKES-UPPER MISSISSIPPI BOARD OF STATE PUBLIC HEALTH AND ENVIRONMENTAL MANAGERS (GLUMBE), THE INDIANA PLUMBING CODE AND THE CITY OF BLOOMINGTON UTILITIES CONSTRUCTION SPECIFICATIONS.
- E. CONTRACTOR IS REQUIRED TO VERIFY FIELD CONDITIONS AND NOTIFY ARCHITECT/ENGINEER OF ANY DISCREPANCIES PRIOR TO BEGINNING WORK.
- F. CONTRACTOR SHALL SET ALL EXISTING AND PROPOSED CASTINGS AND CLEANOUT COVERS TO FINAL FINISHED GRADE.
- G. A MINIMUM OF 18 INCHES VERTICAL SEPARATION SHALL BE MAINTAINED BETWEEN WATER AND SANITARY/STORM SEWER LINES UNLESS OTHERWISE INDICATED. UNLESS WRITTEN PERMISSION IS GIVEN BY THE ENGINEER, SEWERS CROSSING WATER MAINS SHALL BE LAID TO MAINTAIN A MINIMUM VERTICAL DISTANCE OF 18 INCHES BETWEEN THE OUTSIDE OF THE WATER MAIN AND OUTSIDE OF THE SEWER MAIN. THIS SHALL BE THE CASE WHETHER THE WATER MAIN IS ABOVE OR BELOW THE SEWER. THE CROSSING SHALL BE ARRANGED SO THAT THE JOINTS IN THE SEWER MAIN WILL BE EQUIDISTANT AND AS FAR AS POSSIBLE FROM THE JOINTS IN THE WATER MAIN. THE CROSSING MUST BE AT A MINIMUM ANGLE OF 45° MEASURED FROM THE CENTERLINE OF THE SEWER AND WATER MAINS. WHERE A WATER MAIN CROSSES UNDER A SEWER, ADEQUATE STRUCTURAL SUPPORT SHALL BE PROVIDED FOR THE SEWER TO MAINTAIN LINE AND GRADE.
- H. A MINIMUM OF 10 FEET HORIZONTAL SEPARATION SHALL BE MAINTAINED BETWEEN WATER AND SANITARY/STORM SEWER LINES UNLESS OTHERWISE INDICATED. UNLESS WRITTEN PERMISSION IS GIVEN BY THE ENGINEER.
- I. ALL STORM AND SANITARY MANHOLES AND STORM INLET STRUCTURES SHALL HAVE A MINIMUM SEPARATION OF 8' FROM WATER MAINS.
- J. ALL STORM LATERALS SHALL HAVE A MINIMUM COVER OF 24" UNLESS NOTED OTHERWISE.
- K. ALL SANITARY AND STORM LATERALS SHALL HAVE A MINIMUM SLOPE OF 1/8" PER FOOT UNLESS NOTED OTHERWISE.
- L. WHERE DISSIMILAR PIPING MATERIALS ARE JOINED TOGETHER ALONG GRADITY SANITARY AND STORM LATERALS, THE CONTRACTOR SHALL USE A NON-SHEAR COUPLING EQUAL TO FERRO.
- M. PRE-CONSTRUCTION MEETING: EFFECTIVE MARCH 1, 2010, ALL PROJECTS WILL REQUIRE A PRE-CONSTRUCTION MEETING WITH THE CITY OF BLOOMINGTON UTILITIES (CBU) PRIOR TO THE START OF CONSTRUCTION. THE CONTRACTOR AND/OR DEVELOPER MUST CONTACT THE UTILITIES TECHNICIAN AT 812.349.3676 TO SCHEDULE THE MEETING.
- N. UTILITIES INSPECTION: CONTRACTOR SHALL NOTIFY THE CITY OF BLOOMINGTON UTILITIES ENGINEERING DEPARTMENT ONE (1) WORKING DAY PRIOR TO CONSTRUCTION OF ANY WATER, STORM OR SANITARY SEWER UTILITY WORK. A CBU INSPECTOR MUST HAVE NOTICE 50 WORK CAN BE INSPECTED, DOCUMENTED, AND A PROPER AS-BUILT MADE. WHEN CONTRACTOR WORKS ON WEEKENDS, A CBU DESIGNATED HOLIDAY, OR BEYOND NORMAL CBU WORK HOURS, THE CONTRACTOR WILL PAY FOR THE INSPECTOR OVERTIME. FOR CBU WORK HOURS AND HOLIDAY INFORMATION, PLEASE CONTACT THE CITY OF BLOOMINGTON UTILITIES DEPARTMENT AT 812.349.3676.

PLAN NOTES

1. INSTALL NEW TYPE E INLET STRUCTURE AT TERMINUS OF EXISTING 24" HDPE STORM DRAIN PIPE. SEAL ANNULAR SPACES WITH NON-SHRINKING GROUT.
2. CONSTRUCT STORM DRAIN USING 12" DIAMETER ANVIA CSD PVC PIPE. CENTER LENGTH OF PIPE OVER CROSSING WATER LINE SUCH THAT PIPE JOINTS ARE AS FAR AS POSSIBLE FROM WATER LINE.
3. APPLY WATERPROOF EPOXY COATING TO INTERIOR OF INLET STRUCTURE.
4. REMOVE EXISTING 24" CMP, INSTALL 24" HDPE STORM DRAIN IN SAME ALIGNMENT.
5. REMOVE EXISTING INLET STRUCTURE, INSTALL NEW MANHOLE ON EXISTING 36" HDPE STORM DRAIN PIPE.
6. 4" DIAMETER PERFORATED HDPE TYPE CP UNDERDRAIN PIPING. INSTALL PER DETAIL 12/C801.
7. 6" SOLID WALL N-12 HDPE TYPE S DRAIN PIPE. CROSS UNDER SIDEWALK AND CONNECT TO CURB INLET AS INDICATED. INSTALL CLEANOUT AT CONNECTION WITH PERFORATED PIPING, FLUSH WITH GRADE. REFER TO DETAIL 13/C801.



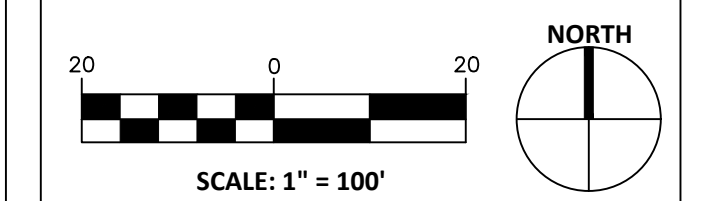
PRELIMINARY
NOT FOR
CONSTRUCTION

**SOUTH WALNUT STREET
SIDEWALK IMPROVEMENTS**
SOUTH WALNUT STREET
BLOOMINGTON, INDIANA

BRCJ Project No: 10525

SITE UTILITIES PLAN

Inspection Hole Locations



Date: Issue:
2021-10-27 100% CONSTRUCTION DOCUMENTS

REVISION SCHEDULE		
Rev. #	Rev. Description:	Issue Date



LEGEND

- ⊙ STORM DRAIN MANHOLE - REFER TO DETAIL 15/C801
- ⊞ STORM DRAIN INLET - REFER TO DETAIL 14/C801
- 4" PERFORATED UNDERDRAIN - REFER TO DETAIL 12/C801
- ⊙ CLEANOUT - REFER TO DETAIL 13/C801

Drawn By: AEK
Designed By: AEK
Checked By: WSR

C601