

# SITE PACKAGE

## ISSUED FOR CONSTRUCTION

ENGINEER'S PROJECT NO. 10727  
DATE: 2022-05-16

## SHEET INDEX

- C100 TITLE SHEET
- C101 EXISTING SITE CONDITION PLAN
- C201 SELECTIVE SITE DEMOLITION PLAN
- C301 SITE IMPROVEMENT PLAN
- C401 SITE GRADING PLAN
- C402 SITE SECTIONS
- C501 SITE LANDSCAPE PLAN
- C601 SITE DETAILS
- C701 MAINTENANCE OF TRAFFIC PLAN

# NORTH DUNN STREET SIDEWALK IMPROVEMENTS 15TH TO 16TH

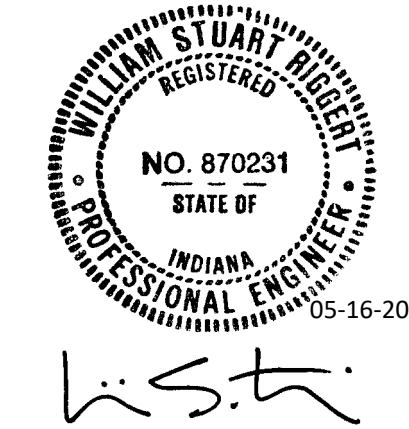
## OWNER'S ADDRESS:

City of Bloomington  
401 N Morton St.  
Bloomington, IN 47404

## PROJECT ADDRESS:

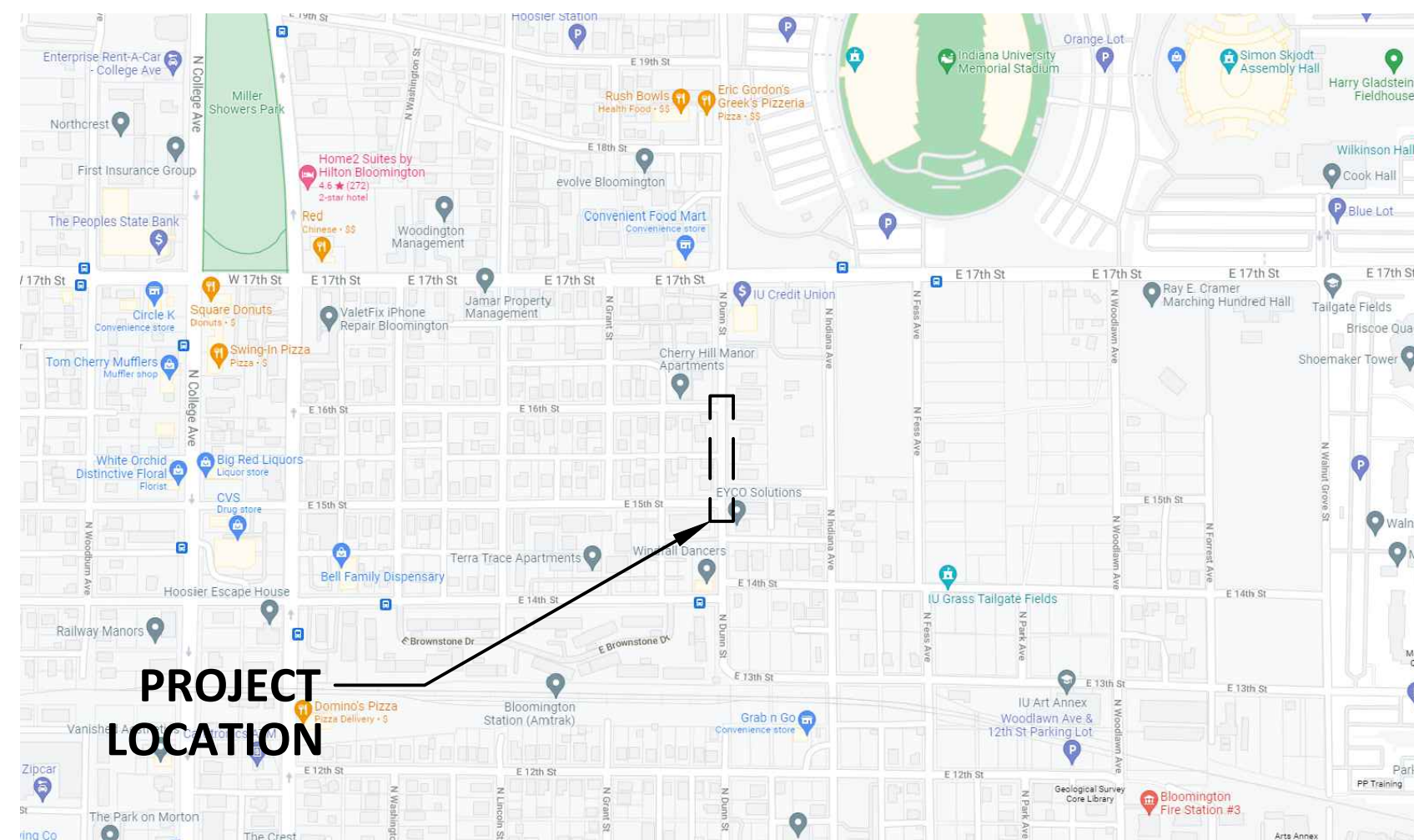
North Dunn Street, between 15th and 16th Streets  
Bloomington, IN 47408

## STAMPS & APPROVALS:

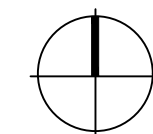


## SPECIFICATIONS

- REFER TO PROJECT MANUAL
- CITY OF BLOOMINGTON CONSTRUCTION SPECIFICATIONS
- INDIANA DEPARTMENT OF TRANSPORTATION STANDARD SPECIFICATIONS 2022 AND SUPPLEMENTS THERETO



PROJECT LOCATION MAP  
NTS



Bledsoe Riggert Cooper James  
**BRCJ**  
LAND SURVEYING • CIVIL ENGINEERING • GIS  
1351 West Tapp Road Bloomington, Indiana 47403  
Phone: 812-336-8277 www.brcjcivil.com



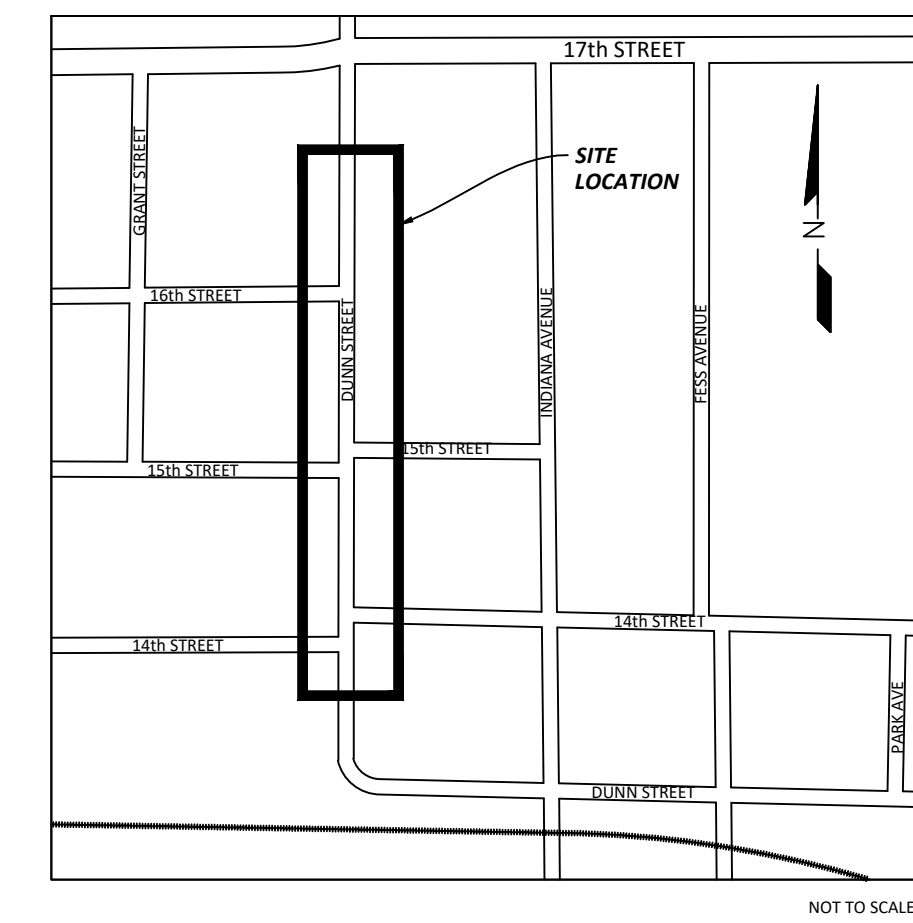


# NOTES

- FIELD WORK PERFORMED JUNE 7 - 10, 2021.
- CONTOURS REPRESENT 1-FOOT INTERVALS. ELEVATIONS SHOWN HEREON ARE BASED UPON IU NETWORK CONTROL MONUMENTS 2015. ELEVATIONS ARE TO NAVD88.
- UTILITIES SHOWN HEREON ARE PER OBSERVED ABOVE GROUND EVIDENCE AND FROM UTILITY MARKINGS PLACED ON THE GROUND BY INDIANA811 MEMBER UTILITIES (SEE TICKETS BELOW). MEMBER UTILITIES DO NOT LOCATE PRIVATE LINES OR FACILITIES. MEMBER UTILITIES DO NOT LOCATE SERVICE LINES NOR ALL UTILITIES WHEN A SURVEY IS THE PURPOSE OF THE TICKET. OVERHEAD UTILITIES ARE IDENTIFIED AS OVERHEAD WITHOUT SPECIAL INVESTIGATION AS TO THE TYPE OR NATURE. STORM AND SANITARY INVERT ELEVATIONS, PIPE SIZES, AND MATERIALS ARE ALL APPROXIMATE BASED ON LIMITED INFORMATION AVAILABLE FROM THE SURFACE. NO STRUCTURES WERE ENTERED TO ACCURATELY MEASURE PIPE SIZES OR TO VERIFY PIPE TYPE AND MATERIAL. STRUCTURE GRATES AND COVERS SHOWN SHOULD NOT BE ASSUMED TO BE THE CENTER OF THE BELOW GROUND STRUCTURE. ALL UTILITIES INCLUDING LOCATIONS AND SIZES NEED TO BE VERIFIED PRIOR TO CONSTRUCTION EFFORTS.
- THE FOLLOWING IS THE INDIANA 811 TICKET NUMBER FOR THIS PROJECT: 2106074768.
- THE FOLLOWING ARE THE MEMBER UTILITIES NOTIFIED BY INDIANA 811:
 

AT&T - DISTRIBUTION	COMMUNICATIONS
BLOOMINGTON TRAFFIC DIVISION, CITY OF	TRAFFIC LIGHTS
BLOOMINGTON UTILITIES, CITY OF	SEWER, WATER
CENTERPOINT ENERGY (SOUTH) (FORMERLY VECTREN)	GAS
COMCAST CABLE (SOUTH)	CABLE TV
DUKE ENERGY	ELECTRIC
INDIANA UNIVERSITY (BLOOMINGTON)	FIBER OPTIC
SMITHVILLE TELEPHONE	COMM., FIBER OPTIC
WINDSTREAM	COMMUNICATIONS
ZAYO BANDWIDTH	FIBER OPTIC
- The utilities shown on this survey represent Quality Level B standard of care. The American Society of Civil Engineers (ASCE) has developed an important standard of care guideline, Standard Guideline for the Collection and Depiction of Existing Subsurface Utility Data, CIVASCE 38-02. This standard guideline describes four quality levels of utility depiction:
  - Quality Level D - Information derived from existing records or oral recollections.
  - Quality Level C - Information obtained by surveying and plotting visible above-ground utility features and by using professional judgment in correlating this information to Quality Level D.
  - Quality Level B - Information obtained through the application of appropriate surface geophysical methods to determine the existence and approximate horizontal position of subsurface utilities.
  - Quality Level A - Precise horizontal and vertical location of utilities obtained by the actual exposure and subsequent measurement of subsurface utilities, usually at a specific point.
 To order a copy of ASCE Standard 38-02, please go to the ASCE Bookstore: <http://www.pubs.asce.org/> or call 1-800-548-2723.
- THIS DRAWING IS NOT INTENDED TO BE REPRESENTED AS A RETRACEMENT OR ORIGINAL BOUNDARY SURVEY, A ROUTE SURVEY, OR A SURVEYOR LOCATION REPORT

# LOCATION MAP



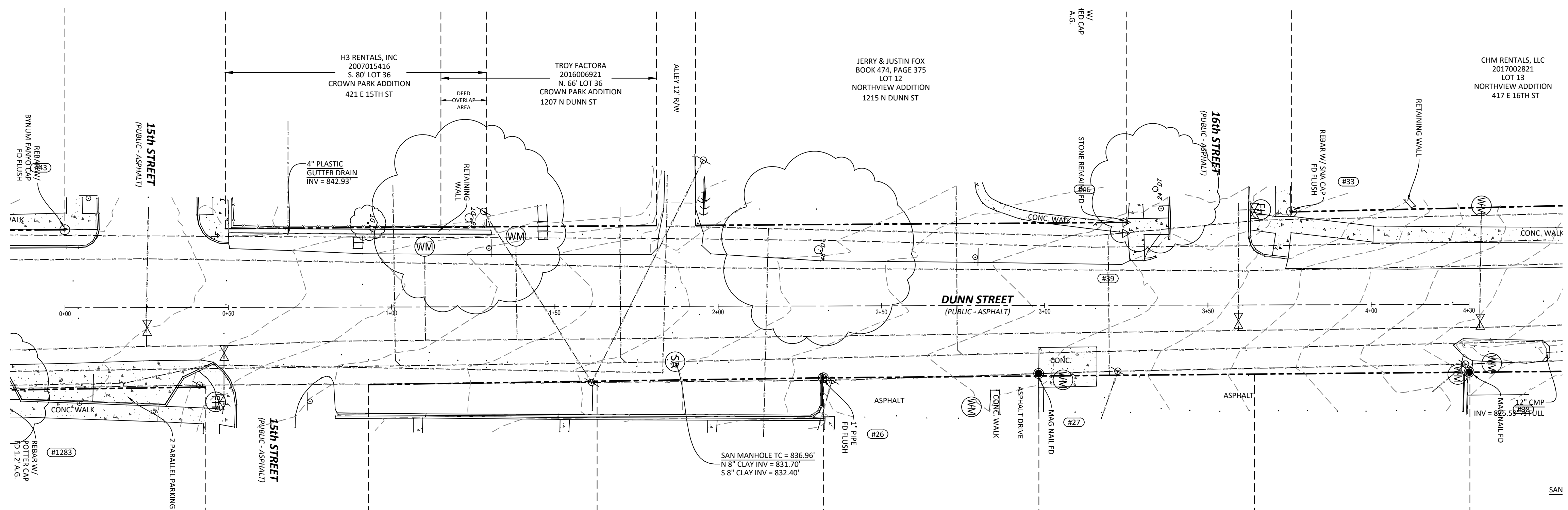
# CONTROL POINTS

HORIZONTAL DATUM: Reference Frame NAD 83(2011) Epoch 2010.0000, Indiana State Plane Coordinates West Zone, U.S. Survey Feet.  
 VERTICAL DATUM: NAVD88 (Computed using Geoid 12A), U.S. Survey Feet.

POINT #	NORTHING	EASTING	ELEVATION	DESCRIPTION
2	1432193.3000	3110143.7980	801.41	MON 02-2015
3	1429402.9170	3110182.2780	770.68	MON 03-2015
6	1431679.8750	3111723.1440	796.71	MON 06-2015
23	1430915.2630	3110070.0690	830.92	MAG NAIL
24	1431006.7080	3110062.2230	835.70	BF REBAR
25	1431008.8980	3110113.1420	833.38	RR SPIKE
26	1431566.5910	3110104.8810	835.68	1" PIPE
27	1431632.5240	3110103.5690	834.14	MAG NAIL
28	1431896.2520	3110102.0100	820.63	RR SPIKE
29	1431930.8420	3110096.7490	819.60	MAG NAIL
30	1431994.2540	3110101.3780	814.72	R/W MON
31	1431969.7230	3110048.2110	818.66	REBAR
32	1431865.1490	3110079.8870	824.00	MAG NAIL
33	1431709.9880	3110054.0980	834.08	SVA REBAR
34	1432117.3780	3110073.0180	807.60	MAG NAIL
35	1431065.7280	3110117.5940	835.99	5/8" REBAR W/ CAP
36	1431877.0610	3110100.5900	821.90	MAG NAIL
37	1431830.2430	3110102.6290	824.08	MAG NAIL
38	1431764.3490	3110103.1540	827.81	MAG NAIL
40	1431082.4900	3110067.8480	837.42	MAG NAIL
41	1431071.3100	3110112.1140	835.53	RR SPIKE
42	1431202.2720	3110060.6660	842.15	BF REBAR
43	1431334.3030	3110059.5530	843.52	BF REBAR
44	1431658.7430	3109984.8290	840.31	REBAR
45	1431658.2540	3109934.7390	842.01	BRG REBAR

# LEGEND

▲ YARD LIGHT	--- FENCE	⊙ FD AXEL
⊙ LIGHT POLE	--- GUARDRAIL	⊙ FD BRASS DISK
⊙ SIGNAL POLE	--- OVERHEAD WIRES	⊙ FD COT GIN SPIDLE
⊙ UTILITY POLE	--- UNDER ELEC.	⊙ FD CHISELED X
⊙ GUY WIRE	--- GAS LINE	⊙ SET CHISELED X
⊙ CATCH BASIN	--- SAN SEWER LINE	⊙ SET DRILL HOLE
⊙ CURB INLET	--- STORM SEWER LINE	⊙ FD HARISON MON.
⊙ ELECTRIC MH	--- UNDER TELEPHONE	⊙ SET HARISON MON.
⊙ MANHOLE	--- EXISTING WATER LINE	⊙ SET HUB/TACK
⊙ PHONE MH	--- CHILLED WATER LINE	⊙ FD REBAR
⊙ SANITARY MH	--- SIGN	⊙ SET REBAR
⊙ SIGNAL MH	⊙ R.O.W. MON.	⊙ FD MAG NAIL
⊙ STEAM MH	⊙ MONITORING WELL	⊙ FD NAIL
⊙ STORM MH	⊙ BOLLARD	⊙ SET NAIL
⊙ WATER MH	⊙ BORE HOLE	⊙ FD PIPE
⊙ ELEC. METER	⊙ DOWNSPOUT	⊙ FD RR SPIKE
⊙ CLEANOUT	⊙ GATE POST	⊙ SET RR SPIKE
⊙ GAS METER	⊙ POLE	⊙ FD STONE
⊙ GAS VALVE	⊙ PARKING METER	⊙ RECORDED B&D
⊙ WATER VALVE	⊙ SPRIGIT	⊙ MEASURED B&D
⊙ FIRE HYDRANT	⊙ T-POST	⊙ CALCULATED B&D
⊙ SPR. HOOKUP	⊙ WOOD POST	⊙ (PROV) PROPORTIONAL DIST.
⊙ SPRINKLER	⊙ PARKING SPACES	⊙ A.G. ABOVE GROUND
	⊙ TRANSFORMER	⊙ B.G. BELOW GROUND
	⊙ ELEC. VAULT	⊙ CONF. TREE
	⊙ PHONE VAULT	⊙ DECID. TREE
	⊙ STEAM VAULT	⊙ SHRUB
	⊙ VALVE VAULT	⊙ PHONE RISER-BOX
	⊙ AC UNIT	⊙ TV RISER-BOX
	⊙ PHONE BOOTHS	⊙ ELEC. RISER-BOX
	⊙ BIRD FEEDER	⊙ GAS RISER-BOX
	⊙ MAILBOX	
	⊙ PROP. TANK	
	⊙ PARKING BLOCK	



**CITY OF BLOOMINGTON**

---

**Bledsoe Riggert Cooper James**  
**BRCJ**  
 LAND SURVEYING • CIVIL ENGINEERING • GIS

1351 West Tapp Road Bloomington, Indiana 47403  
 Phone: 812-336-8277 www.brjcivil.com

---

**NORTH DUNN STREET  
 SIDEWALK IMPROVEMENTS  
 15TH TO 16TH**

NORTH DUNN STREET  
 BLOOMINGTON, IN 47408  
 BRCJ Project No: 10727

**EXISTING SITE  
 CONDITION PLAN**

SCALE: 1" = 20'

Date: 05-16-2022 Issue: ISSUED FOR CONSTRUCTION

---

**REVISION SCHEDULE**

Rev. #	Rev. Description:	Issue Date

---

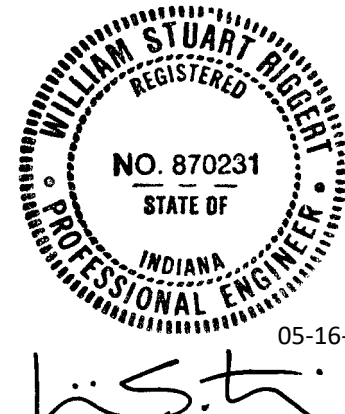
Survey By: CLP  
 Drawn By: RJL  
 Checked By: CLP

C101





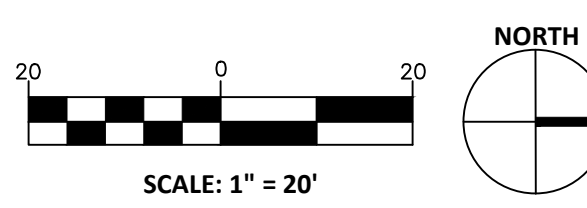
**BRCJ**  
 LAND SURVEYING • CIVIL ENGINEERING • GIS  
 1351 West Tapp Road Bloomington, Indiana 47403  
 Phone: 812-336-8277 www.brcjcivil.com



**NORTH DUNN STREET  
 SIDEWALK IMPROVEMENTS  
 15TH TO 16TH**

NORTH DUNN STREET  
 BLOOMINGTON, IN 47408  
 BRCJ Project No: 10727

**SELECTIVE SITE  
 DEMOLITION PLAN**



Date: 05-16-2022 Issue: ISSUED FOR CONSTRUCTION

**REVISION SCHEDULE**

Rev. #	Rev. Description:	Issue Date

Drawn By: LPS  
 Designed By: WSR  
 Checked By: WSR

**C201**

**GENERAL NOTES**

- CONTRACTOR IS REQUIRED TO VERIFY FIELD CONDITIONS AND NOTIFY ENGINEER OF ANY DISCREPANCIES PRIOR TO START OF WORK.
- THE LOCATION OF UTILITIES SHOWN ARE APPROXIMATE. CONTRACTOR SHALL COORDINATE EXACT UTILITY LOCATIONS WITH THE LOCAL UTILITY COMPANIES PRIOR TO COMMENCING ANY WORK. CONTACT THE INDIANA UNDERGROUND PLANT PROTECTION SERVICES, INC. AT 1-800-382-5544.
- CONTRACTOR SHALL IMPLEMENT THE CONSTRUCTION OF STORMWATER POLLUTION PREVENTION MEASURES PRIOR TO START OF WORK TO ENSURE SEDIMENT DOES NOT LEAVE THE SITE.
- THIS PLAN SHOWS THE OVERALL AREAS OF DEMOLITION TO ALLOW CONSTRUCTION OF IMPROVEMENTS. THE EXACT AREAS OF DEMOLITION SHALL BE ESTABLISHED AND RESTORED BY THE CONTRACTOR. CONTRACTOR SHALL REMOVE ALL DEMOLISHED MATERIAL FROM THE SITE UNLESS NOTED OTHERWISE.
- REMOVE EXISTING STRUCTURES, ASPHALT, CONCRETE, GRAVEL, SOIL, LANDSCAPING AND OTHER MATERIALS AS REQUIRED TO CONSTRUCT DESIGNED IMPROVEMENTS UNLESS NOTED OTHERWISE.
- CONTRACTOR SHALL SAW CUT ALONG PAVEMENTS AND OTHER ADJOINING SURFACES TO REMAIN. SIDEWALKS AND CURBS SHALL BE REMOVED TO THE NEXT CLOSEST JOINT BEYOND.
- AREAS DISTURBED DURING DEMOLITION, CONSTRUCTION, AND GRADING ACTIVITIES SHALL BE RESTORED TO PRE-EXISTING CONDITIONS OR BETTER, UNLESS NOTED OTHERWISE.
- THE CONTRACTOR SHALL BE RESPONSIBLE FOR ALL DEMOLITION WORK NECESSARY IN ORDER TO COMPLETE THE PROJECT AS DESIGNED.
- CONTRACTOR TO PROTECT ALL EXISTING VEGETATION NOT SCHEDULED FOR REMOVAL.
- ANY REQUIRED DRIVEWAY/ACCESS CLOSURES SHALL BE SCHEDULED WITH THE OWNER A MINIMUM OF 7 DAYS IN ADVANCE.
- CONTRACTOR SHALL PROVIDE ADVANCE WARNING SIGNAGE, BARRICADES AND FLAGGERS AS REQUIRED WHEN WORKING ALONG, NEAR, OR WITHIN THE STREET. ALL TRAFFIC CONTROLLING AND TRAFFIC CONTROL DEVICES SHALL CONFORM TO THE INDIANA MANUAL OF UNIFORM TRAFFIC CONTROL DEVICES.

**PLAN NOTES 1**

- REMOVE EXISTING TREE.
- REMOVE EXISTING ASPHALT PAVING. SAW CUT REMAINING PAVEMENT AT EDGE TO CREATE A CLEAN FLUSH EDGE TO INSTALL NEW PAVEMENT AGAINST.
- MILL EXISTING ASPHALT PAVING.
- REMOVE EXISTING CONCRETE PAVEMENT.
- REMOVE EXISTING CONCRETE CURB.
- REMOVE EXISTING SIDEWALK AND RAMPS.
- REMOVE EXISTING CONCRETE BLOCK RETAINING WALL.
- CAREFULLY REMOVE AND SALVAGE EXISTING SIGN FOR REINSTALLATION.
- EXISTING FIRE HYDRANT TO REMAIN.
- EXISTING SIDEWALK TO REMAIN.
- LIMESTONE RETAINING WALL TO REMAIN.
- REMOVE CHAIN-LINK FENCE ADJACENT TO CONCRETE BLOCK RETAINING WALL REMOVAL.
- APPROXIMATE LOCATION OF WATER METERS. CONTRACTOR TO CAREFULLY REMOVE UNDERGROWTH VEGETATION AND UNCOVER METERS. NOTIFY CBU WHEN METERS HAVE BEEN UNCOVERED. COORDINATE WITH CBU, NANCY AXOM 812.349.3689, TO RELOCATE METERS BEHIND RIGHT-OF-WAY IF NECESSARY.
- APPROXIMATE LOCATION OF SANITARY SEWER LATERAL TO REMAIN.
- APPROXIMATE LOCATION OF NATURAL GAS SERVICE LINE. CONTRACTOR TO FIELD VERIFY LOCATION PRIOR TO START OF WORK.

**LEGEND**

- |                |                         |                            |
|----------------|-------------------------|----------------------------|
| ⊗ YARD LIGHT   | --- FENCE               | ⊗ FD AXEL                  |
| ⊗ LIGHT POLE   | --- GUARDRAIL           | ⊗ FD BRASS DISK            |
| ⊗ SIGNAL POLE  | --- OVERHEAD WIRES      | ⊗ FD COT GIN SPOLE         |
| ⊗ UTILITY POLE | --- UNDER ELEC.         | ⊗ SET CHISELED X           |
| ⊗ GUY WIRE     | --- GAS LINE            | ⊗ SET CHISELED X           |
| ⊗ CATCH BASIN  | --- SAN SEWER LINE      | ⊗ SET DRILL HOLE           |
| ⊗ CURB INLET   | --- STORM SEWER LINE    | ⊗ FD HARISON MON.          |
| ⊗ ELECTRIC MH  | --- UNDER TELEPHONE     | ⊗ SET HARISON MON.         |
| ⊗ MANHOLE      | --- EXISTING WATER LINE | ⊗ SET HUB/TACK             |
| ⊗ PHONE MH     | --- CHILLED WATER LINE  | ⊗ FD REBAR                 |
| ⊗ SANITARY MH  | --- SIGN                | ⊗ SET REBAR                |
| ⊗ SIGNAL MH    | --- R.O.W. MON.         | ⊗ FD MAG NAIL              |
| ⊗ STEAM MH     | --- MONITORING WELL     | ⊗ SET MAG NAIL             |
| ⊗ STORM MH     | --- BOLLARD             | ⊗ SET MAG NAIL             |
| ⊗ WATER MH     | --- BORE HOLE           | ⊗ SET NAIL                 |
| ⊗ ELEC. METER  | --- DOWNSPOUT           | ⊗ FD PIPE                  |
| ⊗ CLEANOUT     | --- GATE POST           | ⊗ FD RR SPIKE              |
| ⊗ GAS METER    | --- POLE                | ⊗ SET RR SPIKE             |
| ⊗ GAS VALVE    | --- PARKING METER       | ⊗ FD STONE                 |
| ⊗ WATER VALVE  | --- (R) SPIGOT          | ⊗ RECORD B&D               |
| ⊗ FIRE HYDRANT | --- T-POST              | ⊗ MEASURED B&D             |
| ⊗ SPR. HOOKUP  | --- WOOD POST           | ⊗ CALCULATED B&D           |
| ⊗ SPRINKLER    | --- PARKING SPACES      | ⊗ (PRO) PROPORTIONAL DIST. |
|                | --- TRANSFORMER         | ⊗ A.G. ABOVE GROUND        |
|                | --- ELEC. VAULT         | ⊗ B.G. BELOW GROUND        |
|                | --- PHONE VAULT         | ⊗ CONIF. TREE              |
|                | --- STEAM VAULT         | ⊗ DECID. TREE              |
|                | --- VALVE VAULT         | ⊗ SHRUB                    |
|                | --- AC UNIT             | ⊗ PHONE RISER-BOX          |
|                | --- PHONE BOOTH         | ⊗ TV RISER-BOX             |
|                | --- BIRD FEEDER         | ⊗ ELEC. RISER-BOX          |
|                | --- MAILBOX             | ⊗ GAS RISER-BOX            |
|                | --- PROP. TANK          |                            |
|                | --- PARKING BLOCK       |                            |

- [Pattern] LIMITS OF CONCRETE PAVEMENT REMOVAL
- [Pattern] LIMITS OF ASPHALT PAVEMENT REMOVAL
- [Pattern] LIMITS OF MILLED ASPHALT
- [Pattern] LIMITS OF BLOCK WALL REMOVAL
- [Symbol] TREE PROTECTION FENCING

**UTILITY CONTACTS**

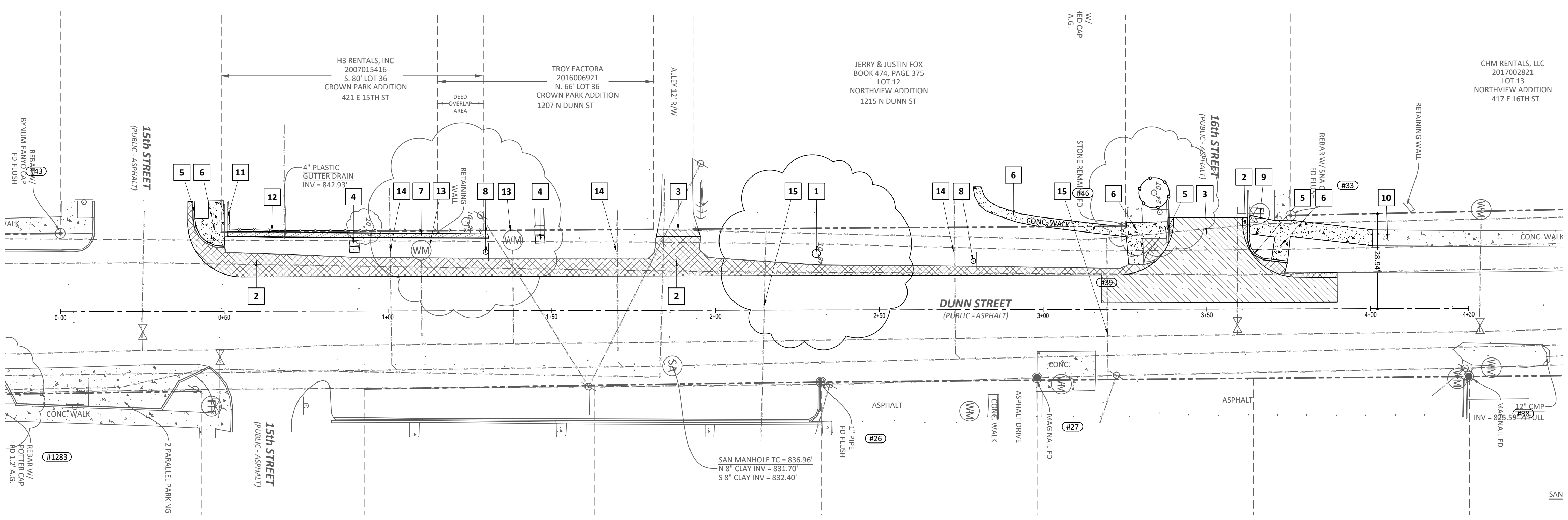
AT&T  
 Robert Wheat - (812) 847-2239

DUKE ENERGY  
 Quentin Knight - (812) 277-3112

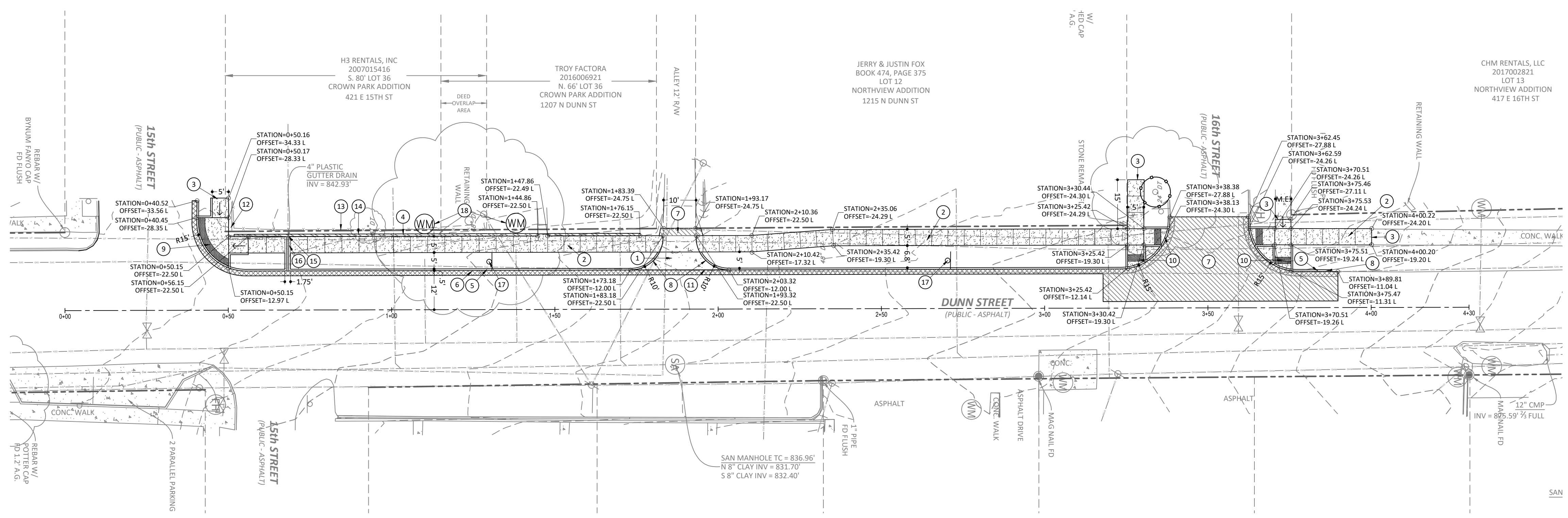
CITY OF BLOOMINGTON UTILITIES (CBU)  
 Nancy Axom - (812) 349-3689

CENTERPOINT ENERGY/VECTREN  
 Timothy Langston - (812) 348-6703  
 Robert Ellis - (314) 391-9723

COMCAST  
 Steve McAtor - (812) 366-3090







**GENERAL NOTES**

- A. ALL DIMENSIONS ARE TO FACE OF CURB, POINT OF TANGENCY, EDGE OF PAVEMENT, EDGE OF WALK, FACE OF BUILDING OR FENCING, UNLESS OTHERWISE NOTED. CURB RETURN RADIUS TO FACE OF CURB. COORDINATE DIMENSIONS WITH ARCHITECTURAL. CONTRACTOR SHALL NOTIFY ENGINEER OF ANY DISCREPANCIES PRIOR TO BEGINNING WORK.
- B. CONTRACTOR IS REQUIRED TO VERIFY FIELD CONDITIONS AND NOTIFY ENGINEER OF ANY DISCREPANCIES PRIOR TO BEGINNING WORK.
- C. ALL DISTURBED AREAS SHALL RECEIVE 6" OF TOP SOIL, SEED AND MULCH OR BE IMPROVED AS NOTED OTHERWISE.
- D. SIGNAGE AND PAVEMENT MARKINGS SHALL COMPLY WITH THE INDIANA MANUAL ON UNIFORM TRAFFIC CONTROL DEVICES.
- E. ALL STREET CUTS FOR UTILITIES AND OTHER IMPROVEMENTS SHALL BE REPAIRED AS DETAILED.
- F. CONTRACTOR SHALL NOT SET EQUIPMENT DIRECTLY ABOVE 10" HIGH PRESSURE GAS MAIN, OR WALK EQUIPMENT LATERALLY ABOVE EXISTING GAS MAIN. CONTRACTOR SHALL USE PROTECTIVE MATTING IF PLACEMENT OR MOVEMENT OF HEAVY EQUIPMENT ABOVE GAS LINE IS UNAVOIDABLE. CROSS EQUIPMENT OVER GAS MAIN AT RIGHT ANGLES.
- G. CONTRACTOR SHALL NOT USE VIBRATORY COMPACTION EQUIPMENT WITHIN 10" OF HIGH PRESSURE GAS MAIN. COMPACTION OF SUBGRADE AND AGGREGATE BASE MATERIALS OVER GAS MAIN MUST BE ACHIEVED BY ROLLING AND TAMPING ONLY.
- H. ALL EXISTING FOLIAGE AND TREE LIMBS SHALL BE TRIMMED BACK TO 1 FOOT PAST THE EDGE OF NEW SIDEWALK AND ALLOW 7 FEET OVERHEAD CLEARANCE.

**PLAN NOTES ①**

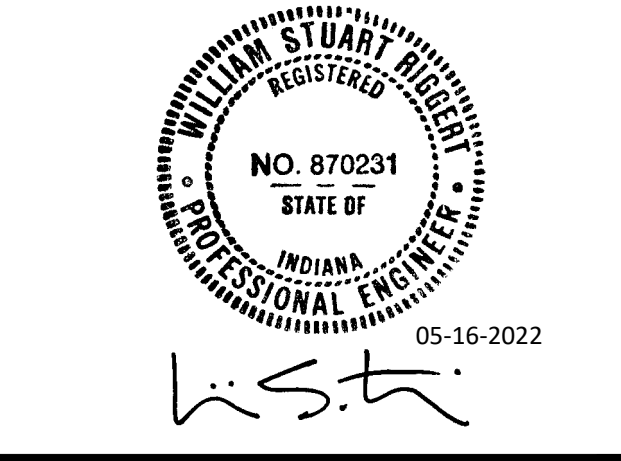
1. CONCRETE PAVEMENT, 9" PCCP ON 12" OF COMPACTED INDOT NO. 53 COARSE AGGREGATE - REFER TO DETAIL 13/C601
2. CONCRETE PAVEMENT, STANDARD DUTY, 4" THICK - REFER TO DETAIL 1/C601
3. NEW CONCRETE TO EXISTING CONCRETE - REFER TO DETAIL 2/C601
4. TALL STANDING CONCRETE CURB - REFER TO DETAIL 3/C601
5. STANDING CONCRETE CURB - REFER TO DETAIL 5/C601
6. ASPHALT PAVEMENT PATCH - REFER TO DETAIL 6/C601
7. ASPHALT MILL, BITUMINOUS WEDGE AND LEVEL - REFER TO DETAIL 7/C701
8. CONCRETE CURB TRANSITION FROM FLUSH TO 6" HEIGHT - REFER TO DETAIL 4/601
9. INDOT STANDARD CURB RAMP - DEPRESSED CORNER CURB RAMP - REFER TO DETAIL 10/C601
10. INDOT STANDARD CURB RAMP - PERPENDICULAR CURB RAMP - REFER TO DETAIL 11/C601
11. 1 1/2" BEVELED EDGE OVER 6" RUN - REFER TO SECTION B-B, DETAIL 12/C601
12. EXISTING LIMESTONE WALL TO REMAIN.
13. REPLACE EXISTING CHAIN-LINK FENCE TO MATCH EXISTING OR BETTER.
14. EXISTING ACCESS TO DUNN STREET FROM RESIDENCE AT 421 E. 15<sup>TH</sup> STREET TO BE REMOVED. INSTALL TALL STANDING CONCRETE CURB AS INDICATED.
15. APPARENT DOWNSPOUT DRAIN LINE WITH 4" DISCHARGE PIPE. CONTRACTOR TO FIELD VERIFY LOCATION OF EXISTING PIPING ON THE WEST SIDE OF THE NEW TALL STANDING CONCRETE CURB. MODIFY AS REQUIRED AND EXTEND WITH 4" SCHEDULE 40 PVC AND FITTINGS THROUGH NEW CURB TO SIDEWALK TRENCH DRAIN AS INDICATED. SET BOTTOM OF PIPE AS BASE OF CONCRETE TRENCH DRAIN.
16. SIDEWALK TRENCH DRAIN, EIJV V7381-20 W/ 6" CONCRETE COLLAR, CURB CUT AT OUTLET - REFER TO DETAIL 9/C601.
17. SIGN, NO PARKING, RE-INSTALLED
18. WATER METERS TO BE RELOCATED BEHIND RIGHT-OF-WAY BY CBU IF NECESSARY. CONTRACTOR TO PERFORM EXCAVATION TO ALLOW CBU TO RELOCATE METER AND THEN BACKFILL. COORDINATE W/ CBU, NANCY AXSON 812.349.3689.

**LEGEND**

- LIMITS OF NEW 4" THICK CONCRETE PAVEMENT
- LIMITS OF NEW 9" THICK CONCRETE PAVEMENT
- LIMITS OF ASPHALT PAVEMENT PATCH
- LIMITS OF RESURFACED ASPHALT
- TALL CURB



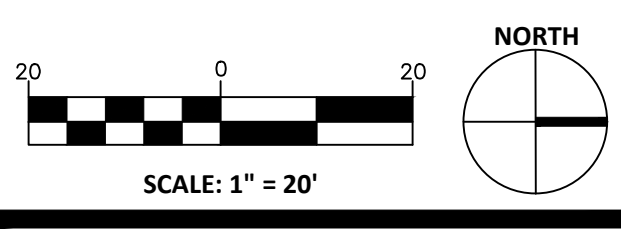
**BRCJ**  
 LAND SURVEYING • CIVIL ENGINEERING • GIS  
 1351 West Tapp Road Bloomington, Indiana 47403  
 Phone: 812-336-8277 www.brcjcivil.com



**NORTH DUNN STREET  
 SIDEWALK IMPROVEMENTS  
 15TH TO 16TH**

NORTH DUNN STREET  
 BLOOMINGTON, IN 47408  
 BRCJ Project No: 10727

**SITE IMPROVEMENT PLAN**



Date: 05-16-2022 Issue: ISSUED FOR CONSTRUCTION

**REVISION SCHEDULE**

Rev. #	Rev. Description:	Issue Date

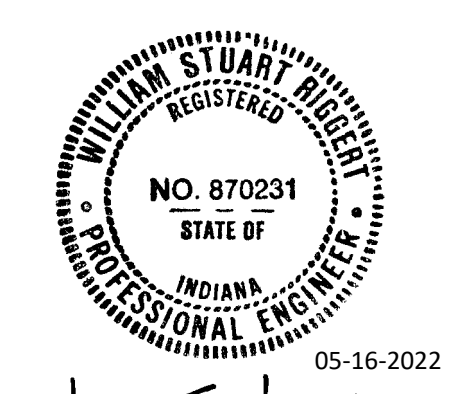
Drawn By: LPS  
 Designed By: WSR  
 Checked By: WSR

**C301**





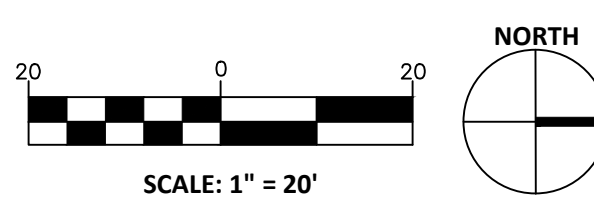
1351 West Tapp Road Bloomington, Indiana 47403  
Phone: 812-336-8277 www.brjcivil.com



### NORTH DUNN STREET SIDEWALK IMPROVEMENTS 15TH TO 16TH

NORTH DUNN STREET  
BLOOMINGTON, IN 47408  
BRCJ Project No: 10727

### SITE GRADING PLAN



Date: 05-16-2022  
Issue: ISSUED FOR CONSTRUCTION

#### REVISION SCHEDULE

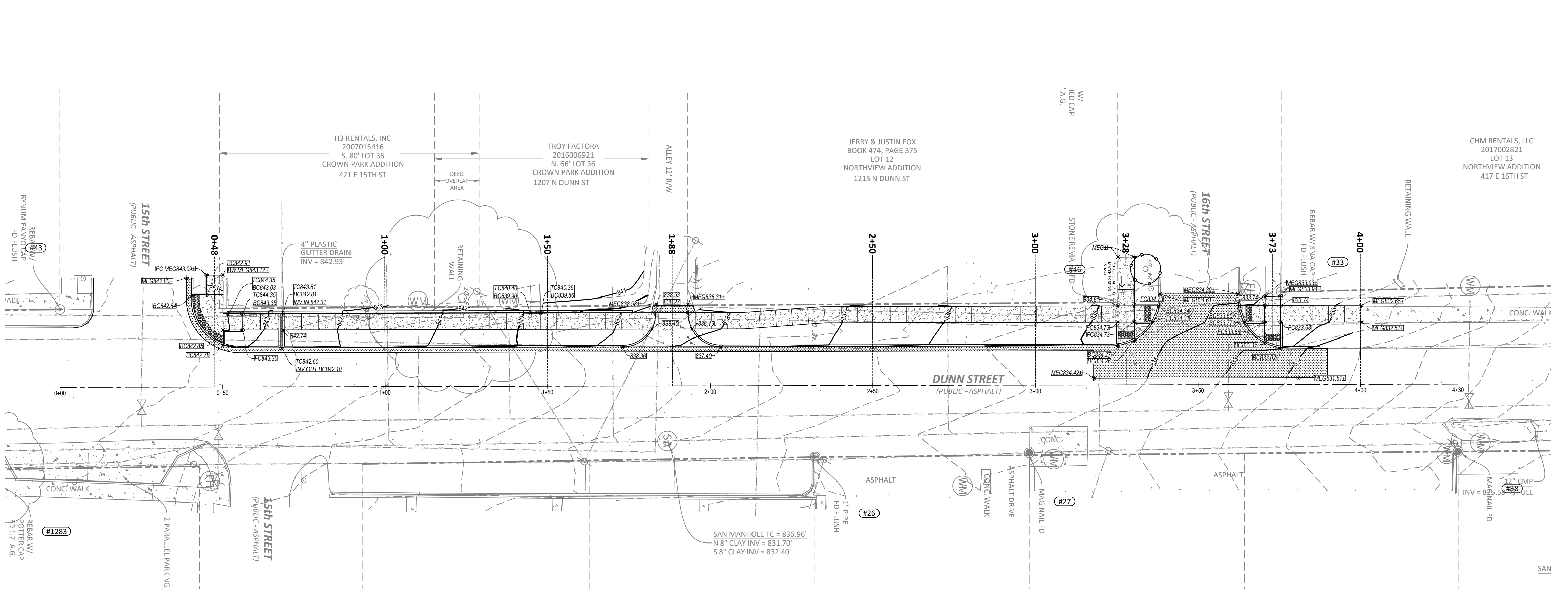
Rev. #	Rev. Description:	Issue Date

Drawn By: LPS  
Designed By: WSR  
Checked By: WSR

# C401

## GENERAL NOTES

- GRADE ALL AREAS TO THE FINISH GRADES SHOWN.
- CONTRACTOR TO VERIFY FIELD CONDITIONS WITH RESPECT TO THE PROPOSED GRADING PLANS AND NOTIFY ENGINEER OF ANY AND ALL DISCREPANCIES PRIOR TO BEGINNING WORK.
- INSTALL AND MAINTAIN EROSION CONTROL DEVICES AS REQUIRED AND WHERE NECESSARY TO CONTROL SEDIMENT.
- CONTRACTOR SHALL PREVENT SURFACE WATER AND GROUND WATER FROM ENTERING EXCAVATIONS, FROM PONDING ON PREPARED SUBGRADES AND FROM FLOODING PROJECT SITE AND SURROUNDING AREAS. PROTECT SUBGRADES FROM SOFTENING, UNDERMINING, WASHOUT AND DAMAGE BY RAIN OR WATER ACCUMULATION. THIS WILL REQUIRE SUPPLEMENTAL GRADING ABOVE AND BEYOND THAT SHOWN.
- CONTRACTOR SHALL ADJUST ALL CASTINGS TO FINISHED GRADE.
- CONTRACTOR SHALL ESTABLISH FINISH GRADES TO ENSURE POSITIVE DRAINAGE WITH NO PONDING.
- LONGITUDINAL SIDEWALK SLOPE SHALL NOT EXCEED 5%, UNLESS NOTED OTHERWISE. TRANSVERSE SIDEWALK SLOPE SHALL NOT EXCEED 1.5%.
- SPOT GRADES GIVEN AT THE FACE OF CURB INDICATE PAVEMENT EDGE/CURB INTERFACE (FLOW LINE) ELEVATION, UNLESS NOTED OTHERWISE. BOTTOM OF WALL ELEVATIONS INDICATE WHERE FINISH GRADE AND WALL MEET.
- ALL SLOPES 3:1 OR GREATER TO BE COVERED WITH NORTH AMERICAN GREEN SEASON EROSION CONTROL BLANKET OR APPROVED EQUAL. INSTALL PER MANUFACTURER'S INSTRUCTIONS.
- CONTRACTOR SHALL NOT SET EQUIPMENT DIRECTLY ABOVE 10" HIGH PRESSURE GAS MAIN, OR WALK EQUIPMENT LATERALLY ABOVE EXISTING GAS MAIN. CONTRACTOR SHALL USE PROTECTIVE MATTING IF PLACEMENT OR MOVEMENT OF HEAVY EQUIPMENT ABOVE GAS LINE IS UNAVOIDABLE. CROSS EQUIPMENT OVER GAS MAIN AT RIGHT ANGLES.
- CONTRACTOR SHALL NOT USE VIBRATORY COMPACTION EQUIPMENT WITHIN 10' OF HIGH PRESSURE GAS MAIN. COMPACTION OF SUBGRADE AND AGGREGATE BASE MATERIALS OVER GAS MAIN MUST BE ACHIEVED BY ROLLING AND TAMPING ONLY.



## LEGEND

- PROPOSED CONTOURS
- EXISTING CONTOURS
- SPOT ELEVATION
- MEG** MATCH EXISTING GRADE
- TW** TOP OF WALL
- BW** BOTTOM OF WALL AT FINISH GRADE ELEVATION
- TS** TOP OF STAIR - ELEVATION IS EQUAL ACROSS WIDTH
- BS** BOTTOM OF STAIR - ELEVATION IS EQUAL ACROSS WIDTH
- BC** BOTTOM OF CURB WHERE IT MEETS PAVEMENT. FOR STANDING AND CHAIR BACK CURBS, TOP OF CURB IS 6" ABOVE THIS ELEVATION UNLESS NOTED OTHERWISE. FOR ROLL CURBS, TOP OF CURB IS 3.5" ABOVE THIS ELEVATION, UNLESS NOTED OTHERWISE
- FL** FLOW LINE
- FC** FLUSH CURB - CURB IS IN FULLY DEPRESSED CONDITION
- TC** TOP OF CURB - PROVIDED ONLY WHEN CURB IS IN A NONSTANDARD HEIGHT CONDITION.
- TB** TOP OF BANK
- LIMITS OF RESURFACED ASPHALT
- LIMITS OF CONCRETE PAVING

**Know what's below. Call before you dig.**  
CALL 2 WORKING DAYS BEFORE YOU DIG  
**1-800-382-5544** CALL TOLL FREE  
PER INDIANA STATE LAW ICB 1-26,  
IT IS AGAINST THE LAW TO EXCAVATE  
WITHOUT NOTIFYING THE UNDERGROUND  
LOCATION SERVICE TWO (2) WORKING DAYS  
BEFORE COMMENCING WORK.



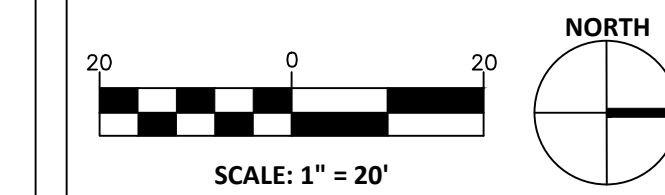


*W.S.R.*

**NORTH DUNN STREET  
SIDEWALK IMPROVEMENTS  
15TH TO 16TH**

NORTH DUNN STREET  
BLOOMINGTON, IN 47408  
BRCJ Project No: 10727

**SITE SECTIONS**



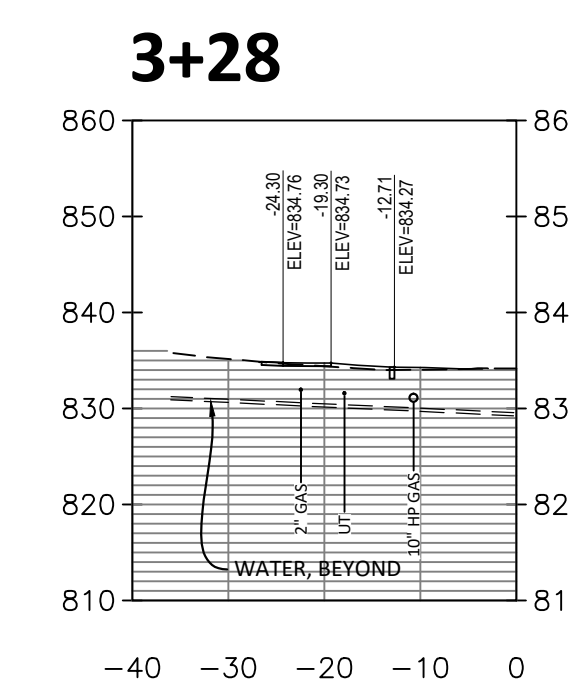
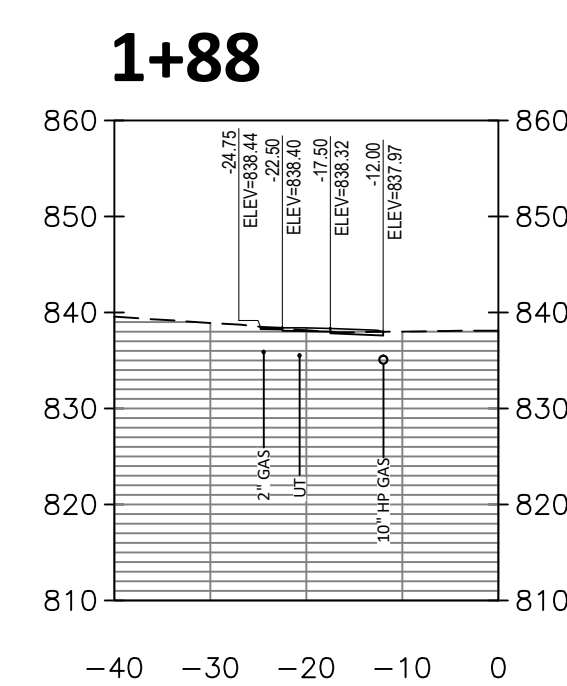
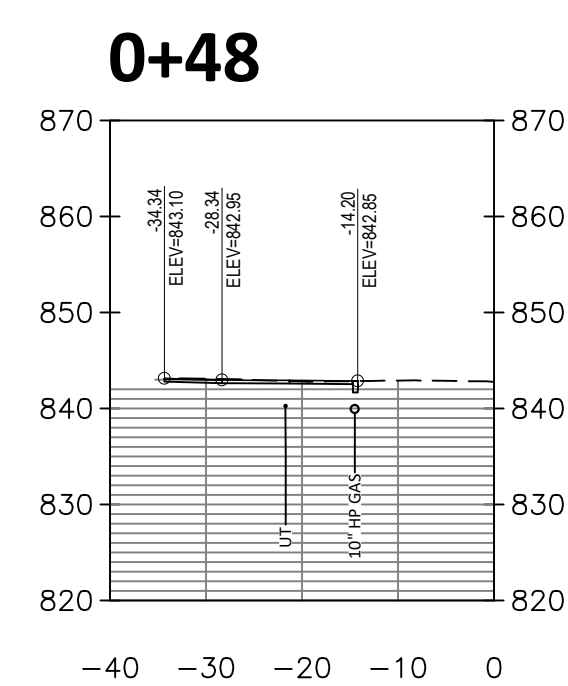
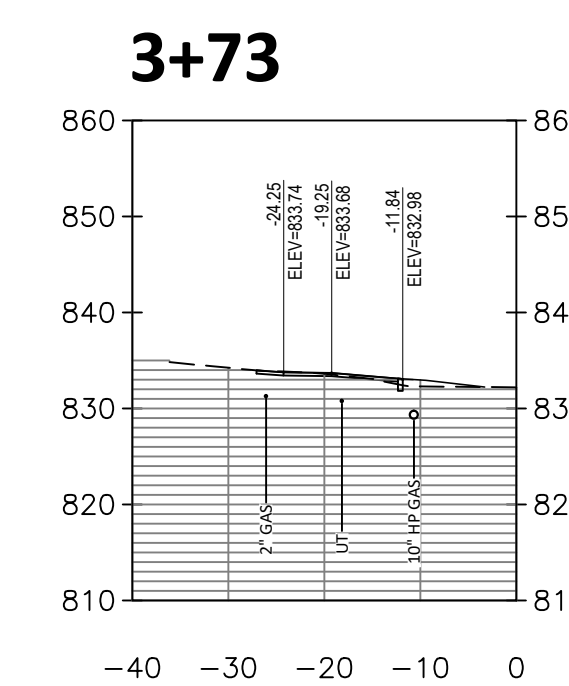
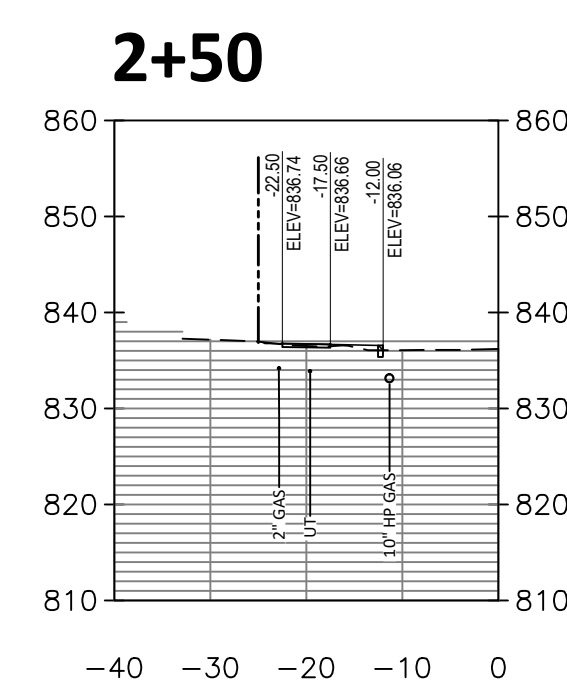
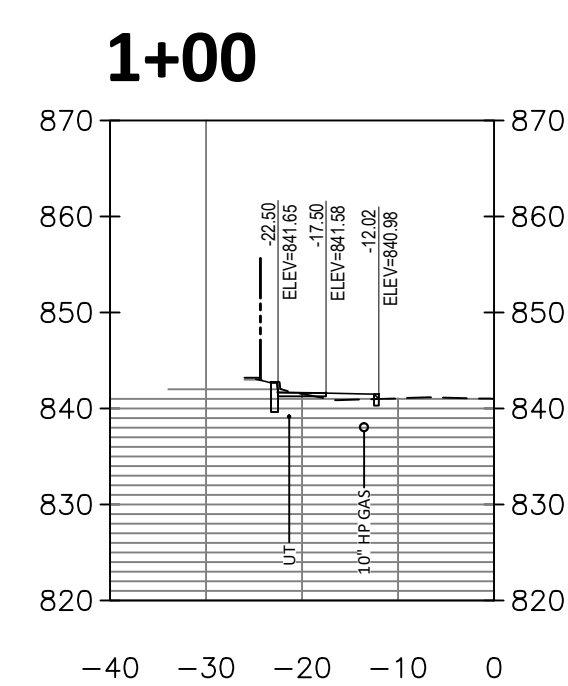
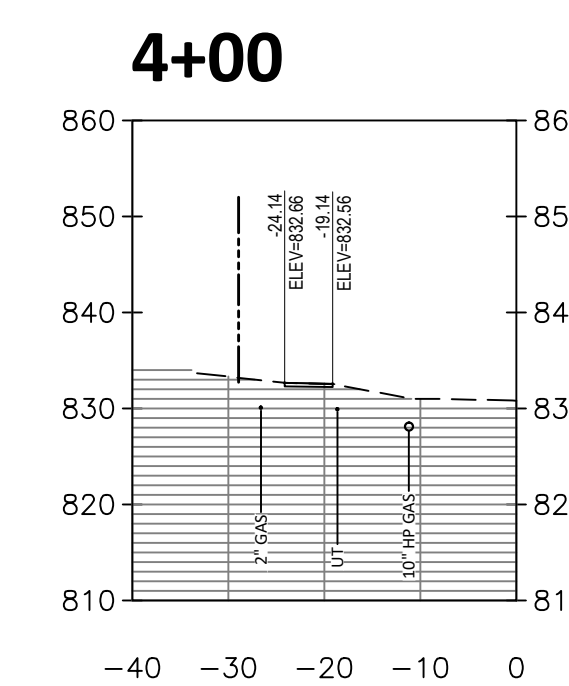
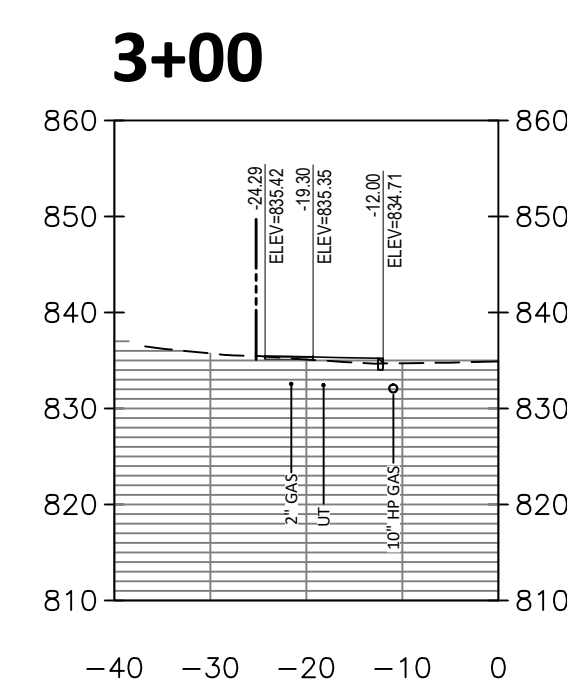
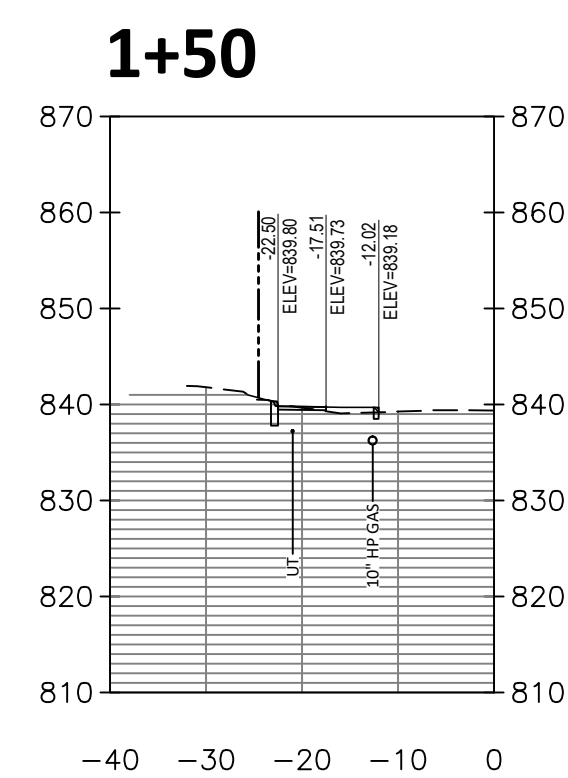
Date: 05-16-2022 Issue: ISSUED FOR CONSTRUCTION

**REVISION SCHEDULE**

Rev. #	Rev. Description:	Issue Date

Drawn By: LPS  
Designed By: WSR  
Checked By: WSR

**C402**

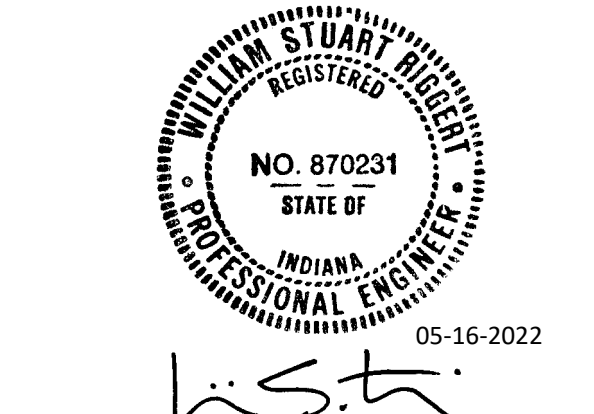


\* CONTRACTOR TO CONFIRM DEPTH,  
DIAMETER AND MATERIAL OF  
CROSSING UTILITIES PRIOR TO START  
OF CONSTRUCTION.





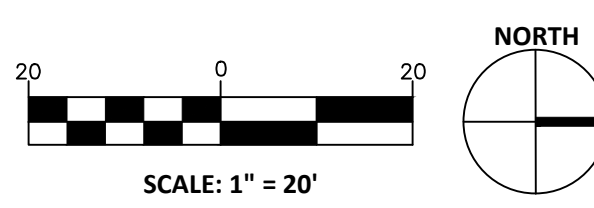
1351 West Tapp Road Bloomington, Indiana 47403  
Phone: 812-336-8277 www.brjcivil.com



**NORTH DUNN STREET  
SIDEWALK IMPROVEMENTS  
15TH TO 16TH**

NORTH DUNN STREET  
BLOOMINGTON, IN 47408  
BRJ Project No: 10727

**SITE LANDSCAPE PLAN**



Date: 05-16-2022 Issue: ISSUED FOR CONSTRUCTION

**REVISION SCHEDULE**

Rev. #	Rev. Description:	Issue Date

Drawn By: LPS  
Designed By: LPS  
Checked By: WSR

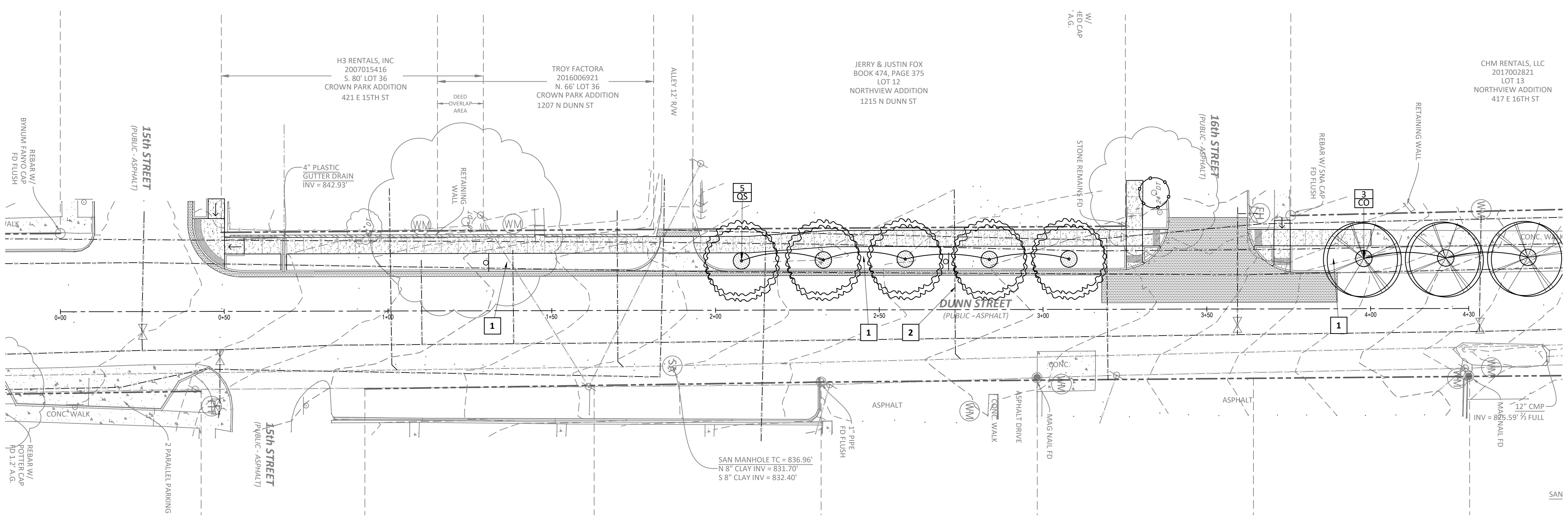
**C501**

**GENERAL NOTES**

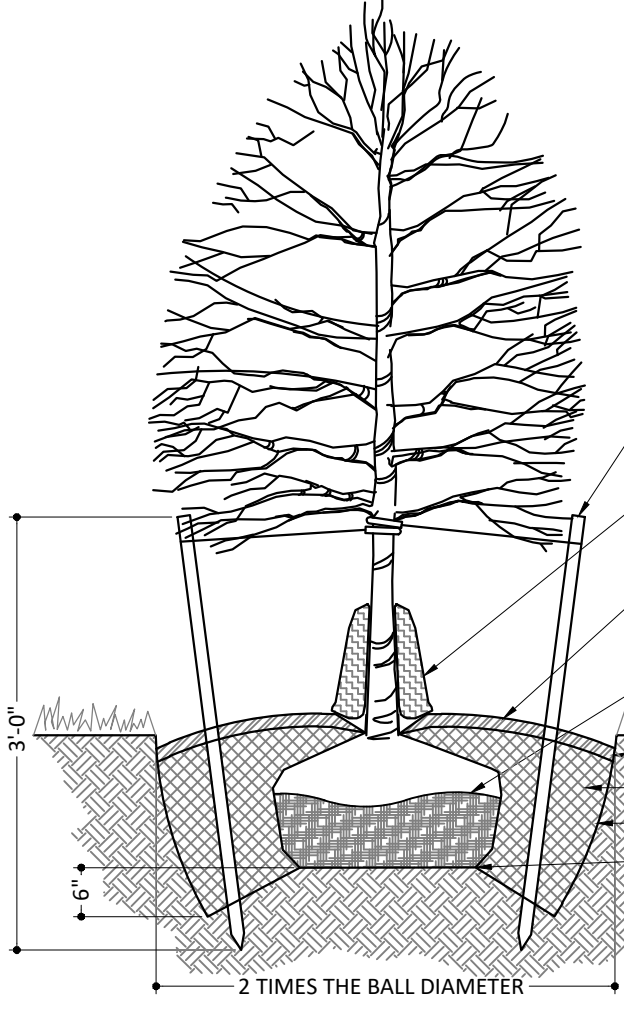
- THE CONTRACTOR SHALL LOCATE ALL UTILITIES AND VERIFY SITE CONDITION INFORMATION ON DRAWINGS PRIOR TO STARTING WORK AND PROMPTLY REPORT ANY DISCREPANCIES OR DEVIATIONS FROM THE INFORMATION SHOWN ON THE PLAN TO THE DESIGNER AND OWNER. THE OWNER IS NOT RESPONSIBLE FOR UNAUTHORIZED CHANGES OR EXTRA WORK REQUIRED TO CORRECT UNREPORTED DISCREPANCIES.
- THE CONTRACTOR SHALL SUPPLY ALL PLANT MATERIAL IN QUANTITIES AND CONDITIONS SUFFICIENT TO COMPLETE THE PLANTING AS SHOWN ON THE LANDSCAPE PLAN. PLANT MATERIAL QUANTITIES SHOWN ON PLAN TAKE PRECEDENCE OVER THOSE IN THE PLANT LIST.
- ALL PLANT MATERIAL SHALL CONFORM TO ANSI Z 60-1996 AND CURRENT ASSOCIATION OF AMERICAN NURSERYMEN STANDARDS. NO PARK GRADE MATERIAL SHALL BE ACCEPTED.
- SPECIMEN SIZES INDICATED ON PLANT SCHEDULE ARE MINIMUM ACCEPTABLE SIZES. LARGER SPECIMENS MAY BE UTILIZED.
- ALL PLANTING MASSES SHALL BE CONTAINED WITHIN MULCH BEDS AND RECEIVE 3" THICK SHREDED HARDWOOD MULCH. ALL TREES OUTSIDE PLANTING BED AREAS SHALL RECEIVE A 5' MIN. DIAMETER MULCH RING AT BASE.
- ALL LANDSCAPED AREAS NOT BARK MULCHED SHALL BE SEEDED OR SODDED AS INDICATED, UNLESS NOTED OTHERWISE. ALL OTHER AREAS DISTURBED, GRADED OR OTHERWISE MODIFIED BY NEW CONSTRUCTION SHALL RECEIVE 6" OF TOP SOIL, SEED AND MULCH. SEE SPECIFICATIONS FOR SEEDING REQUIREMENTS.
- ALL PLANT MATERIAL SHALL BEAR THE SAME RELATIONSHIP TO FINISH GRADE AS THE PLANT'S ORIGINAL GRADE PRIOR TO DIGGING. ALL PLANTS SHALL BE SET PLUMB. UNLESS NOTED OTHERWISE, IT IS THE CONTRACTOR'S OPTION TO STAKE TREES. HOWEVER, IT SHALL REMAIN THE CONTRACTOR'S RESPONSIBILITY TO ASSURE PLANTS REMAIN PLUMB UNTIL THE END OF CONTRACTED GUARANTEE PERIOD.
- ALL PLANTINGS SHALL BE WATERED DURING THE FIRST 24 HOUR PERIOD AFTER PLANTING. WATER THOROUGHLY TO ENSURE ALL AIR POCKETS ARE REMOVED AROUND ROOT BALL.
- CONTRACTOR IS RESPONSIBLE FOR WATERING AND MAINTAINING PLANT MATERIAL UNTIL TIME OF ACCEPTED ESTABLISHMENT.
- ALL PLANTING BED EDGES TO BE SPADE CUT UNLESS SPECIFIED WITH MOW STRIP OR OTHER INSTALLED EDGING.
- PLACE BIODEGRADABLE STRAW BLANKET NORTH AMERICAN GREEN S150BN OR APPROVED EQUAL ON SLOPES OF OR EXCEEDING 3:1 OR AS OTHERWISE INDICATED OR DIRECTED BY ENGINEER.
- COORDINATE LANDSCAPE PLAN WITH ALL WATER QUALITY AND EROSION CONTROL MEASURES.
- IF OWNER REQUESTS, PLANTS SHALL BE STAKED AND/OR FIELD-LOCATED BY DESIGNER AND CONTRACTOR. FINAL LOCATIONS OF TREES SHOULD BE ADJUSTED IF NEEDED TO AVOID OVERHEAD AND UNDERGROUND UTILITIES.
- ANY PLANT MATERIAL SUBSTITUTIONS INSTALLED WITHOUT APPROVAL FROM DESIGNER AND/OR OWNER SHALL BE REPLACED AT CONTRACTOR'S EXPENSE.
- ALL PLANTING MATERIALS, REGARDLESS OF SIZE SPECIFIED, SHALL BE OF SIZES THAT COMPLY WITH CITY OF BLOOMINGTON UDO LANDSCAPING STANDARDS.
- NO HEAVY MACHINERY/EQUIPMENT SHALL BE USED WITHIN ROOT ZONES OF EXISTING TREES THAT ARE TO REMAIN, EXCEPT WERE DISTURBANCE IS INDICATED. CONTRACTOR SHALL ENSURE EXISTING TREES TO REMAIN ARE PROTECTED AND FULLY PRESERVED DURING THE CONSTRUCTION/GRADING PROCESS.

**PLAN NOTES**

- SEED AND MULCH OVER 6" OF TOPSOIL TO COVER GRADED AND DISTURBED AREAS - REFER TO SPECIFICATIONS
- FIELD VERIFY LOCATION OF SANITARY SEWER LATERAL AND ADJUST PLANTS TO MAINTAIN 10' OF SEPARATION. LANDSCAPE CONTRACTOR TO COORDINATE WITH CBU AND OWNER'S REPRESENTATIVE.



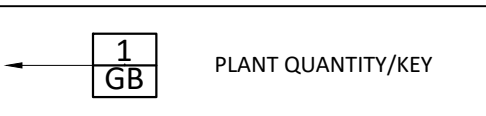
- GENERAL NOTES:**
- STAKE TREES ONLY IF THEY DO NOT REMAIN PLUMB
  - DO NOT HEAVILY PRUNE TREES AT PLANTING. PRUNE ONLY CROSSOVER LIMBS, CO-DOMINANT LEADERS, AND BROKEN OR DEAD BRANCHES. SOME INTERIOR TWIGS AND LATERAL BRANCHES MAY BE PRUNED, HOWEVER, DO NOT REMOVE TERMINAL BUDS OF BRANCHES THAT EXTEND TO THE EDGE OF THE CROWN.
  - TREES MUST BE PLANTED SUCH THAT THE TRUNK FLARE IS VISIBLE AT THE TOP OF THE ROOT BALL. DO NOT COVER THE TOP OF THE ROOT BALL WITH SOIL. AFTER INSTALLATION, FINISH GRADE OF ROOT BALL SHOULD BE AT OR ABOVE SURROUNDING GRADE.



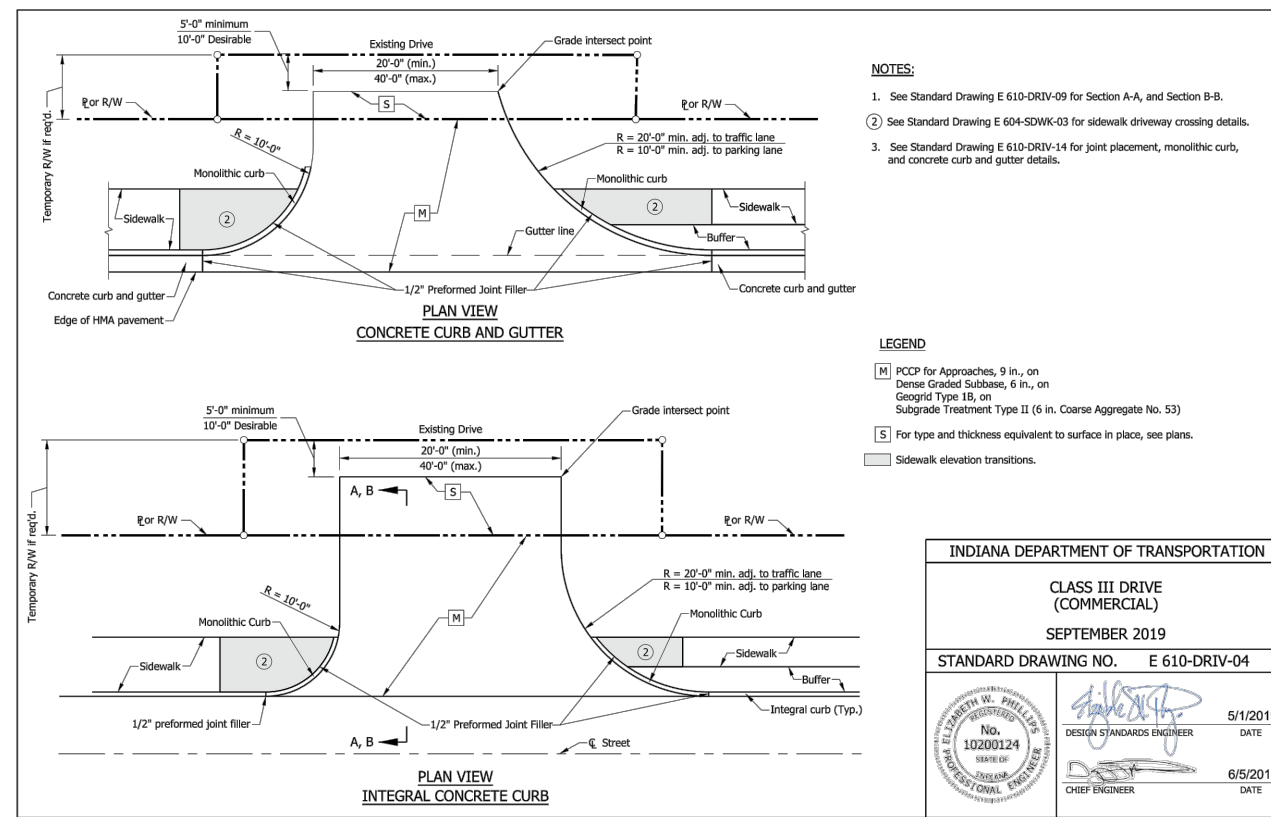
**PLANTING SCHEDULE**

KEY	QUANTITY	SCIENTIFIC NAME	COMMON NAME	SIZE	CONDITION
<b>OVERSTORY TREES</b>					
CO	3	Celtis occidentalis	Hackberry	2" Caliper Minimum	B & B
OS	5	Quercus shumardii	Shumard Oak	2" Caliper Minimum	B & B

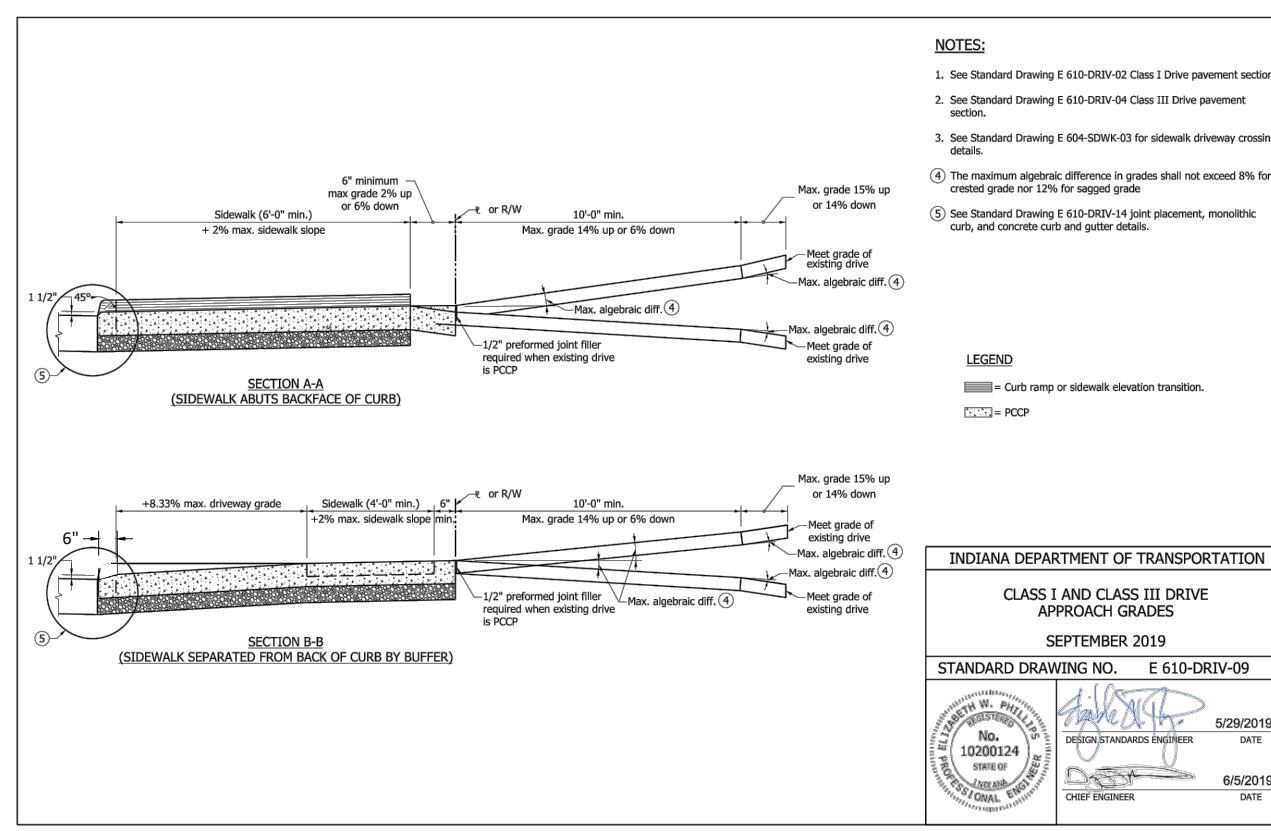
**LEGEND**



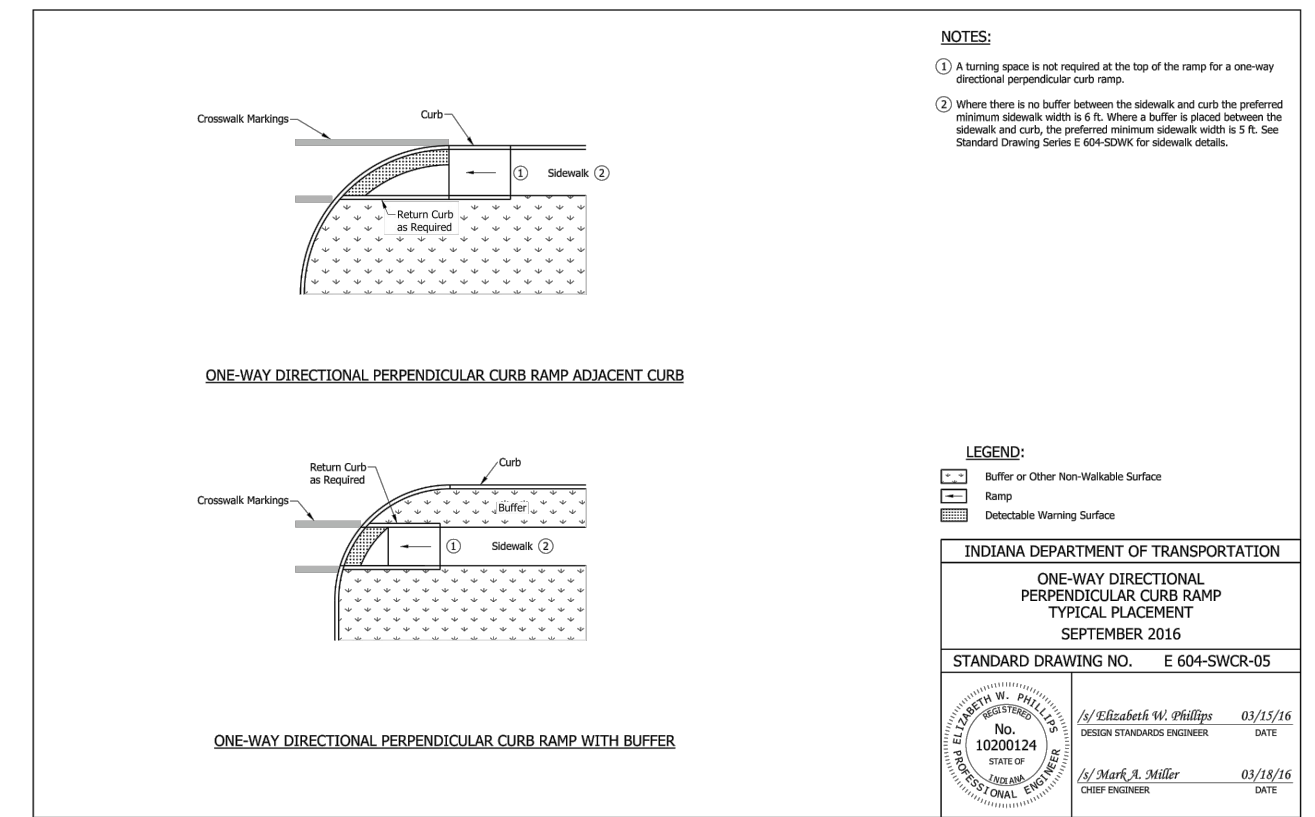




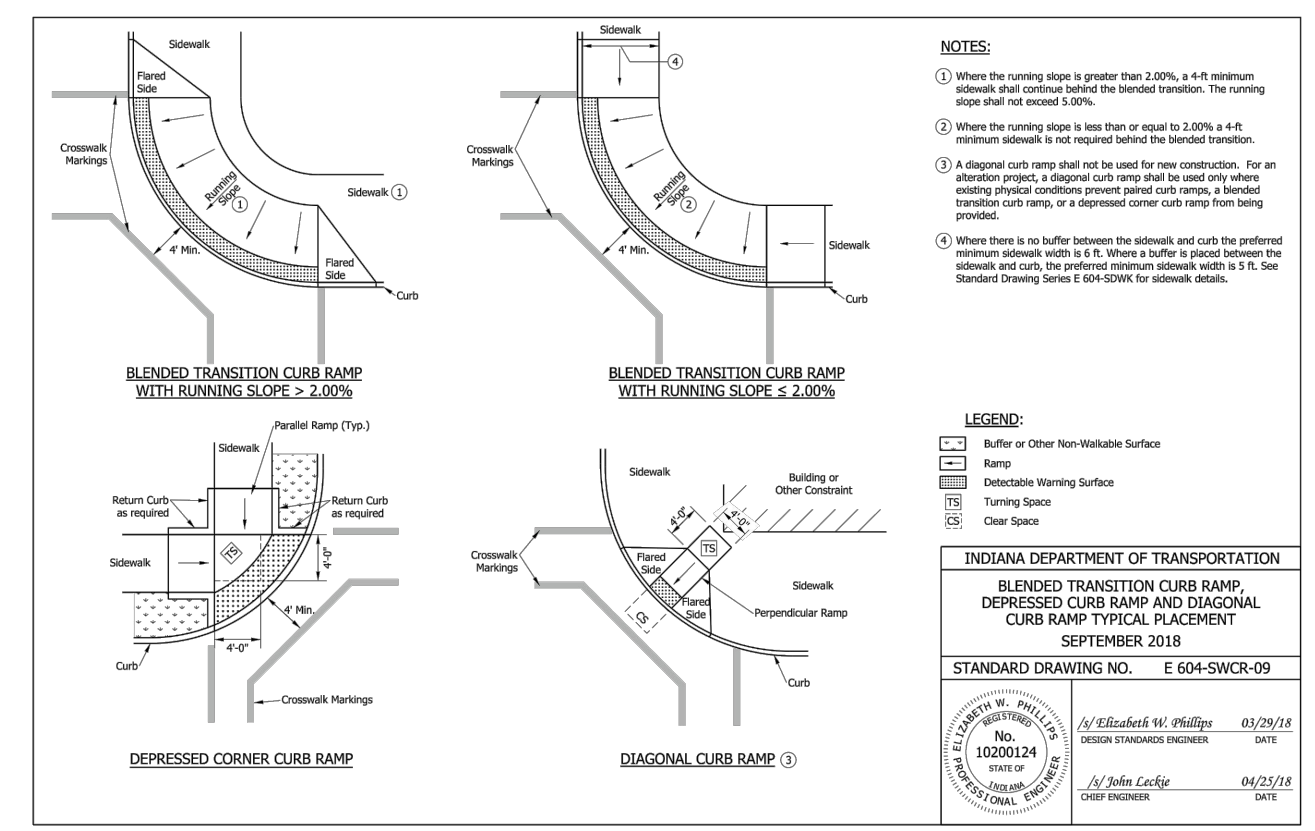
13 INDOT STANDARD CLASS III DRIVE



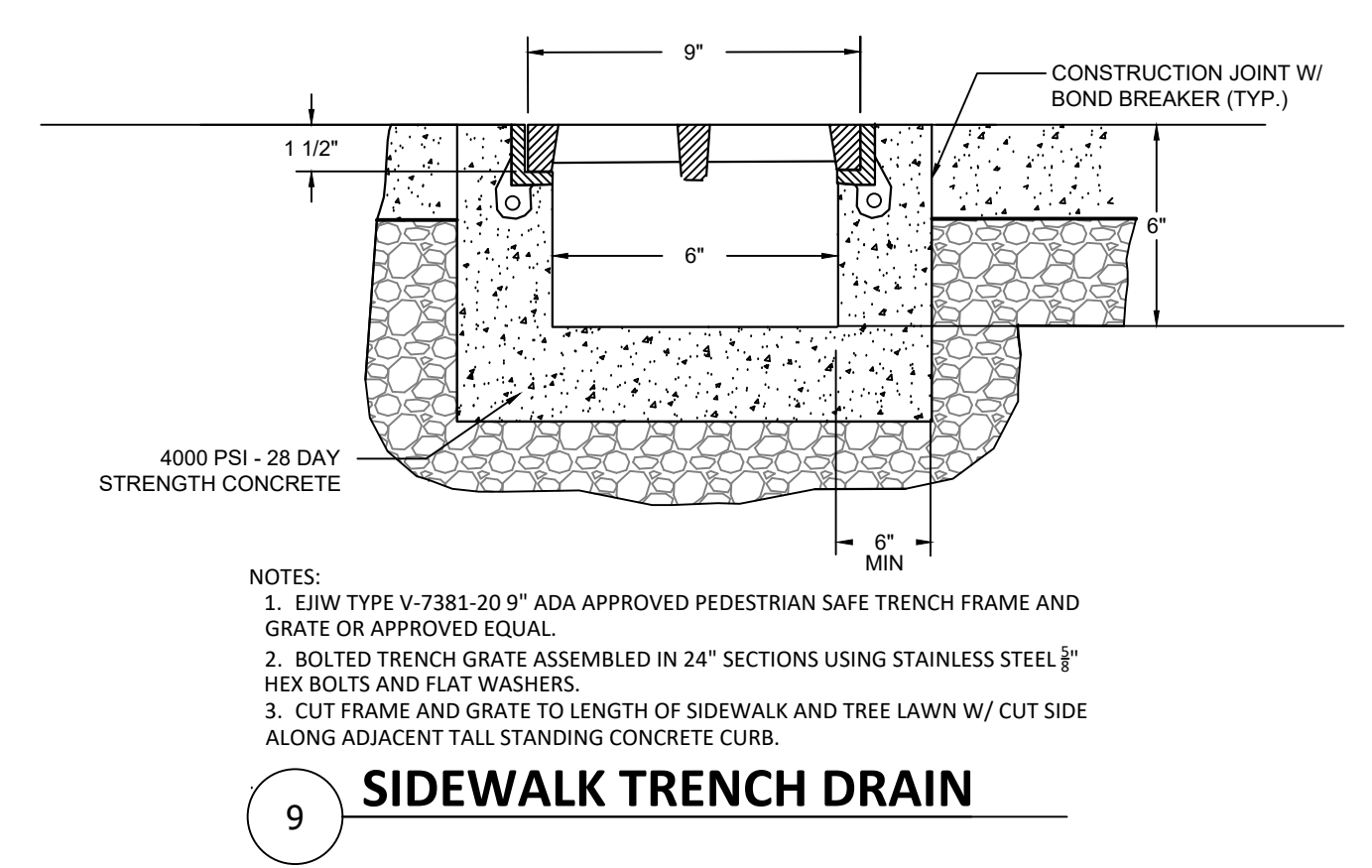
12 INDOT STANDARD CLASS III DRIVE APPROACH



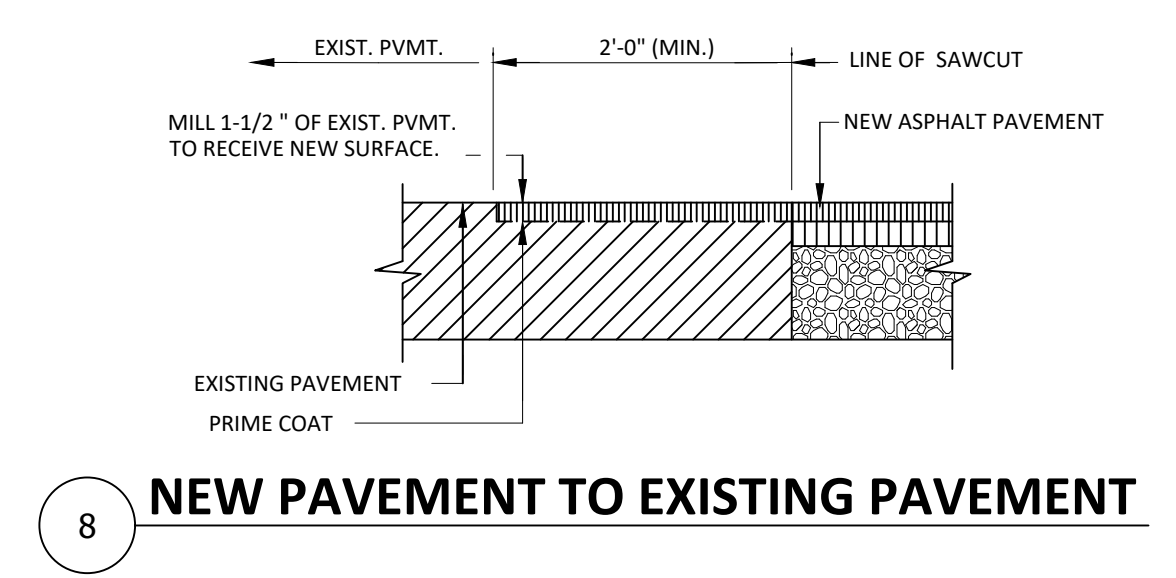
11 INDOT STANDARD CURB RAMP



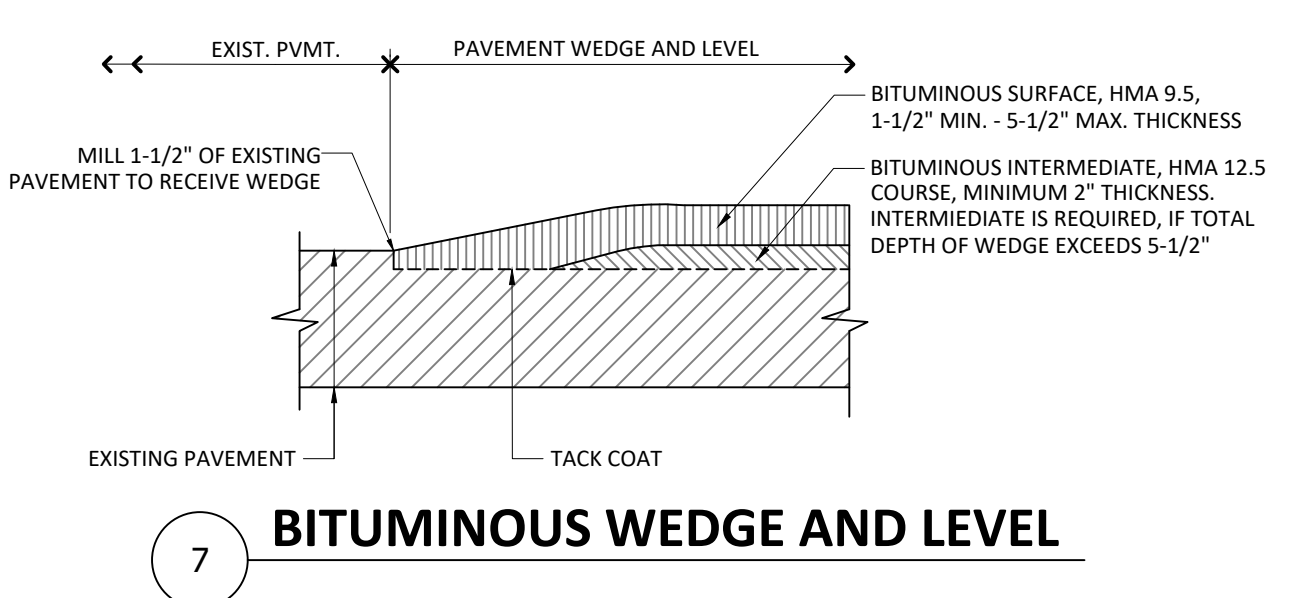
10 INDOT STANDARD CURB RAMP



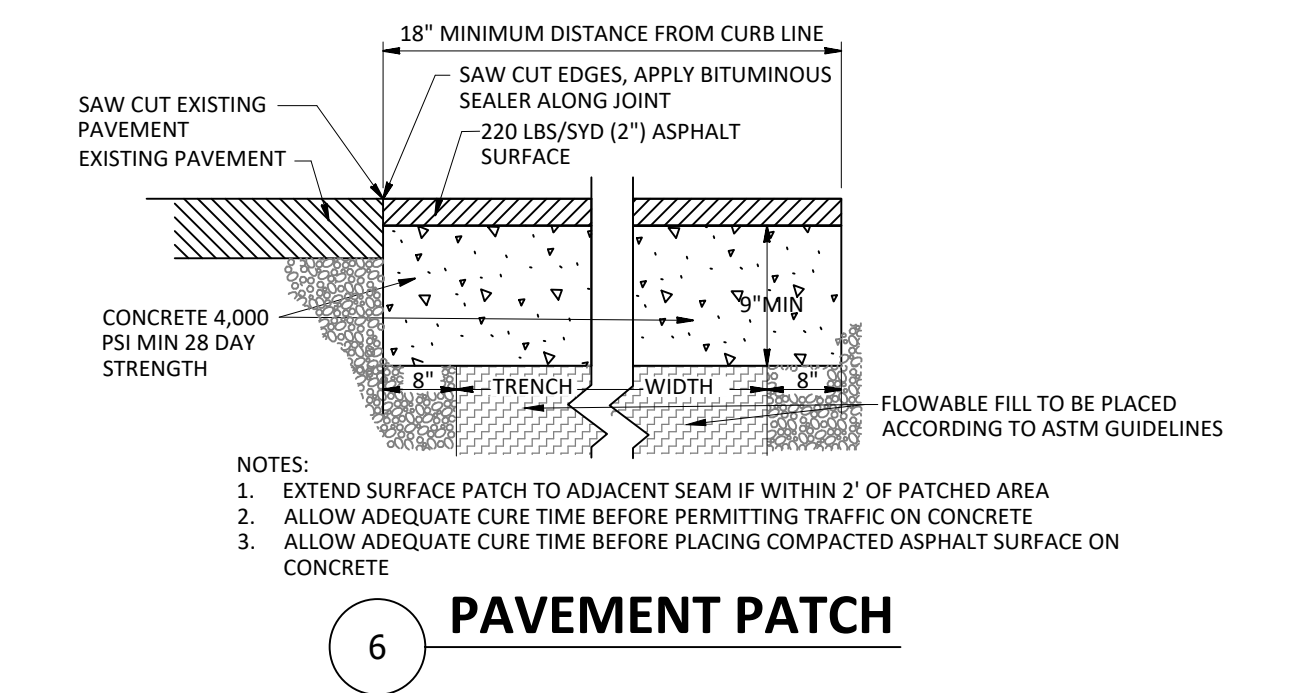
9 SIDEWALK TRENCH DRAIN



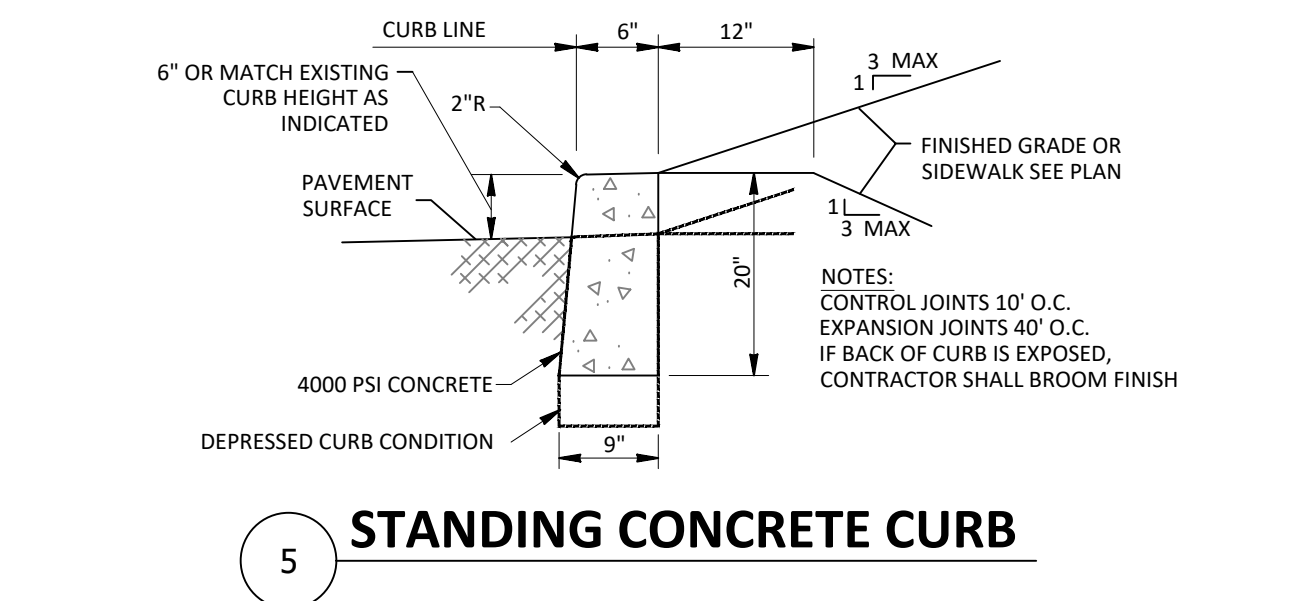
8 NEW PAVEMENT TO EXISTING PAVEMENT



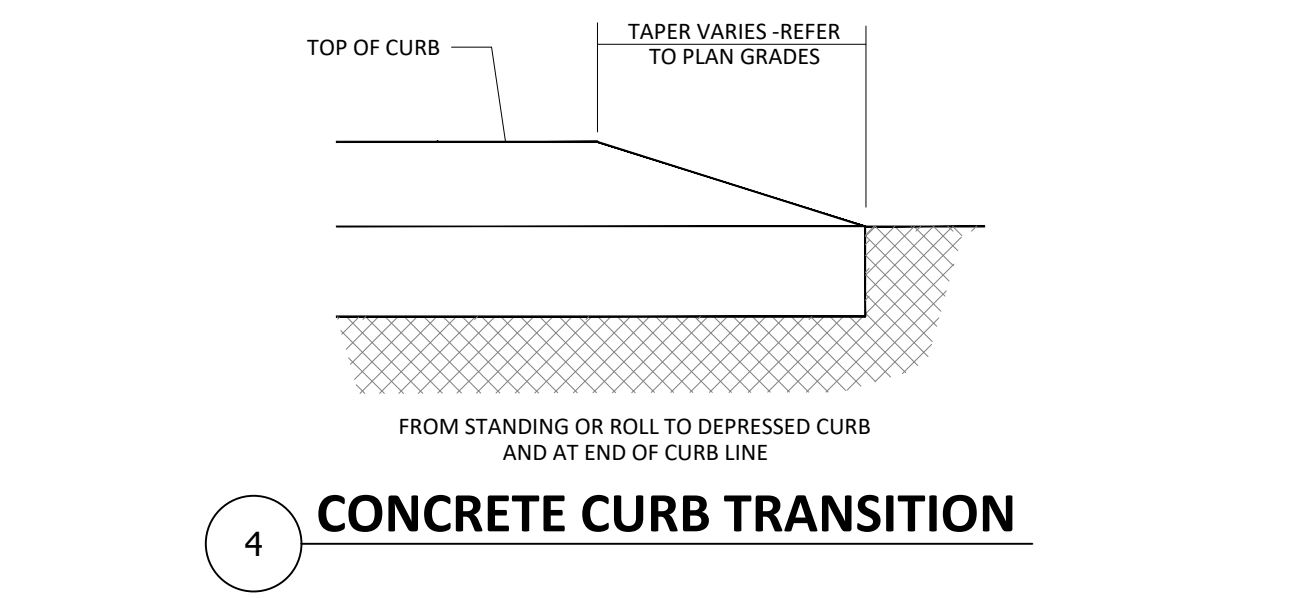
7 BITUMINOUS WEDGE AND LEVEL



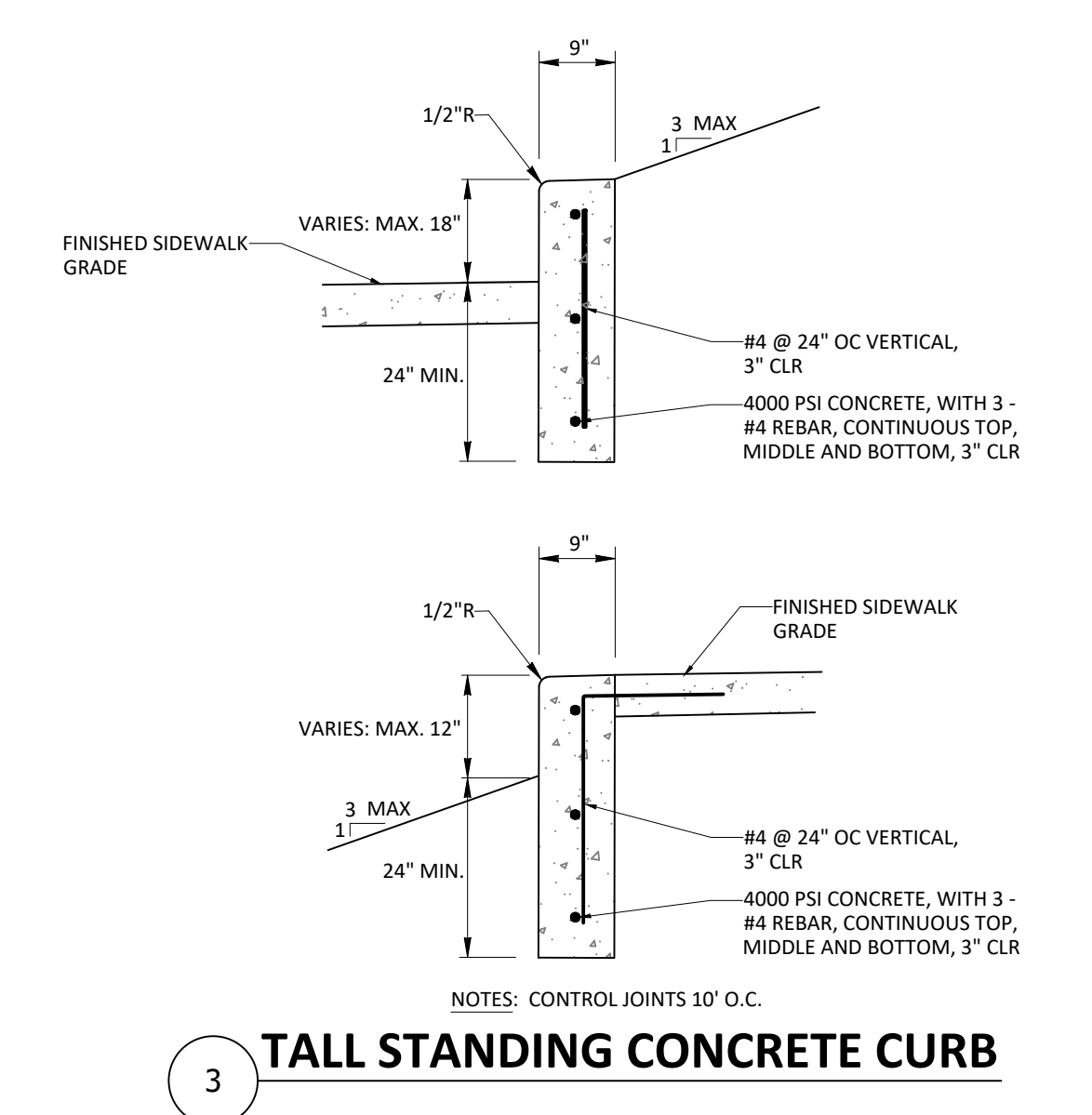
6 PAVEMENT PATCH



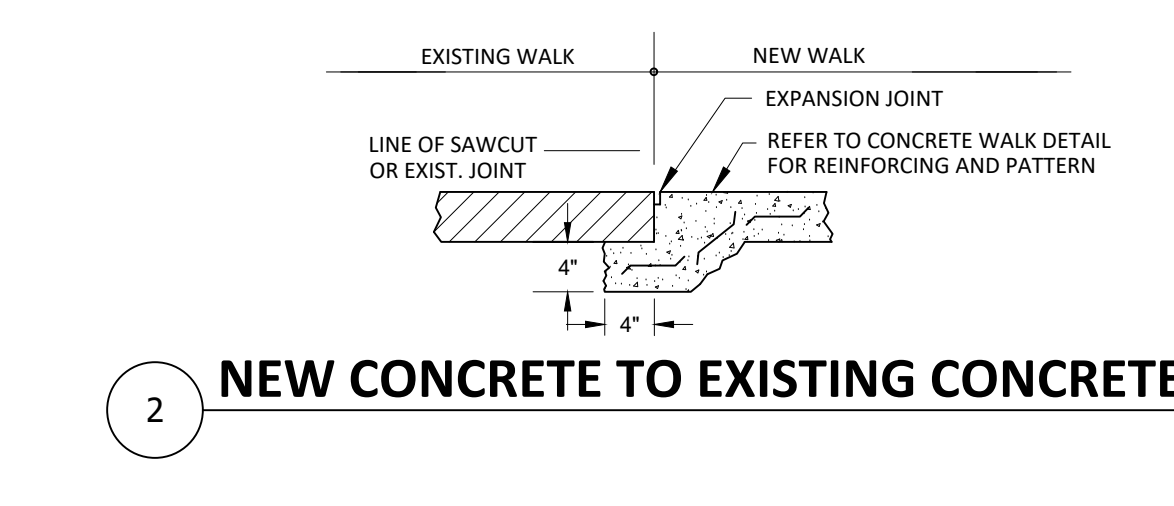
5 STANDING CONCRETE CURB



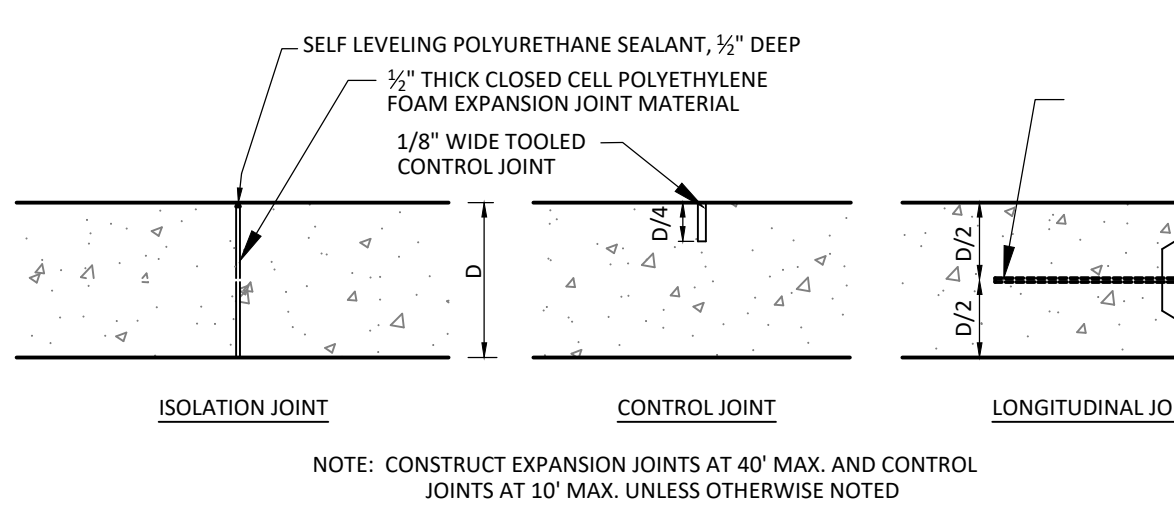
4 CONCRETE CURB TRANSITION



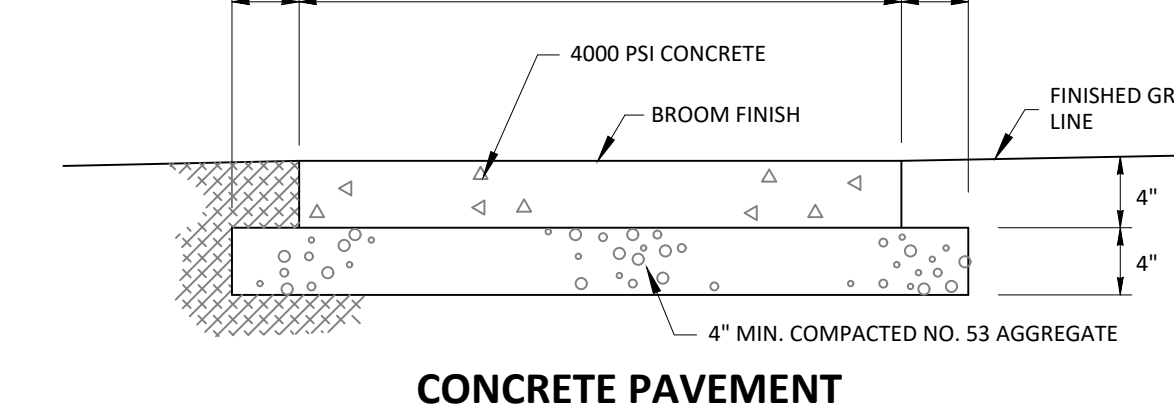
3 TALL STANDING CONCRETE CURB



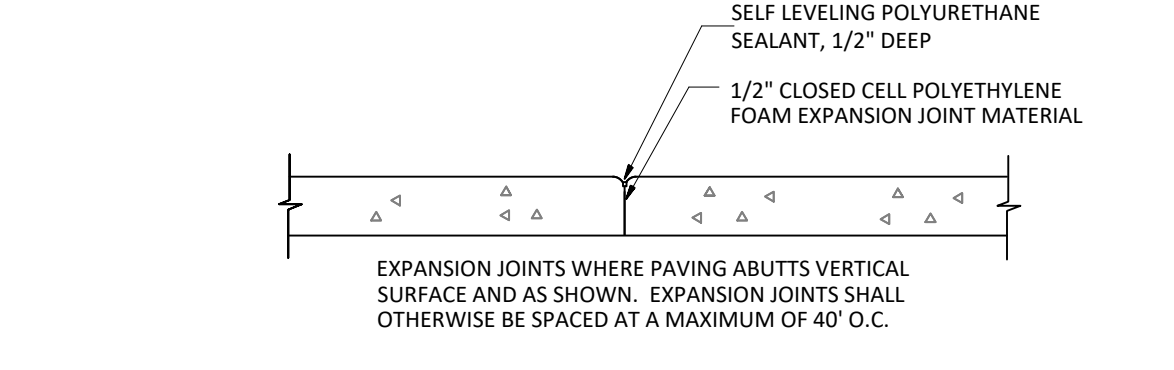
2 NEW CONCRETE TO EXISTING CONCRETE



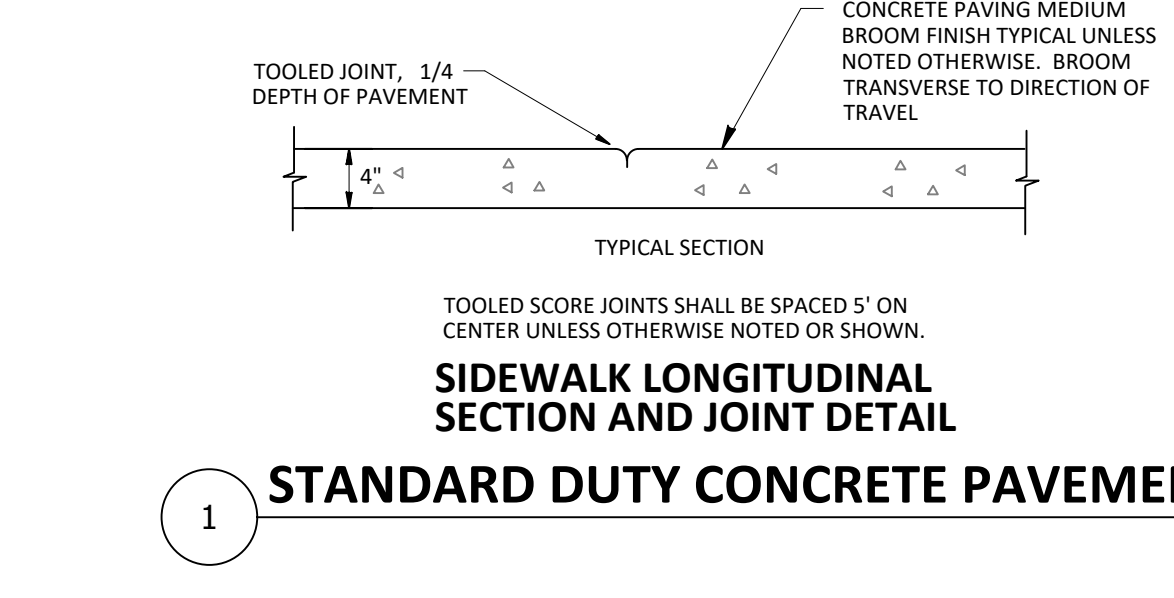
CONCRETE JOINT DETAILS



CONCRETE PAVEMENT



TYPICAL EXPANSION JOINT



1 STANDARD DUTY CONCRETE PAVEMENT



**NORTH DUNN STREET SIDEWALK IMPROVEMENTS 15TH TO 16TH**

NORTH DUNN STREET BLOOMINGTON, IN 47408 BRCJ Project No: 10727

**SITE DETAILS**

SCALE: NOT TO SCALE

Date: 05-16-2022 Issue: ISSUED FOR CONSTRUCTION

REVISION SCHEDULE		
Rev. #	Rev. Description:	Issue Date

Drawn By: LPS  
Designed By: WSR  
Checked By: WSR

**C601**





### GENERAL NOTES

- CONTRACTOR SHALL PROVIDE ADVANCE WARNING SIGNAGE, BARRICADES AND FLAGGERS AS REQUIRED WHEN WORKING ALONG, NEAR, OR WITHIN THE CITY OF BLOOMINGTON'S STREETS AND ALLEYS. ALL TRAFFIC CONTROLLING AND TRAFFIC CONTROL DEVICES SHALL CONFORM TO THE INDIANA MANUAL OF UNIFORM TRAFFIC CONTROL DEVICES AND BE INSTALLED FOR A MINIMUM OF SEVEN (7) WORKING DAYS PRIOR TO CLOSING ANY STREET, ALLEY OR PORTION THEREOF. THE CONTRACTOR SHALL CONTACT THE CITY OF BLOOMINGTON ENGINEERING DEPARTMENT AT (812) 349-3913 TO MAKE NECESSARY ARRANGEMENTS.
- CONTRACTOR SHALL CONTACT THE CITY OF BLOOMINGTON TRANSIT FOR A MINIMUM OF TWENTY (20) WORKING DAYS PRIOR TO CLOSING OF STREET TO COORDINATE ALTERNATE ROUTE FOR SOUTHBOUND AND NORTHBOUND BUS NO. 1 NORTH FEE LANE/BHS NORTH.
- TRENCHES SHALL BE FILLED DAILY OR COVERED WITH METAL PLATES TO PREVENT ACCESS DURING NON-WORK HOURS.
- CHANNELIZATION DRUM SPACING IS 60' MAXIMUM IN TANGENT CHANNELIZATION ALONG NORTH DUNN STREET AND 50' MAXIMUM ALONG EAST 15TH STREET.

### LEGEND

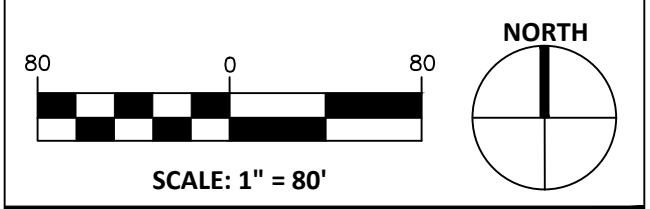
- CONSTRUCTION SIGN - SHAPE PER MUTCD
- BARRICADE - INDOT TYPE III
- PROJECT WORK SITE
- CHANNELIZATION DRUM - INDOT STANDARD
- NORTH BOUND TRAFFIC



### NORTH DUNN STREET SIDEWALK IMPROVEMENTS 15TH TO 16TH

NORTH DUNN STREET  
BLOOMINGTON, IN 47408  
BRCJ Project No: 10727

### MAINTENANCE OF TRAFFIC



Date: 05-16-2022 Issue: ISSUED FOR CONSTRUCTION

REVISION SCHEDULE		
Rev. #	Rev. Description:	Issue Date

Drawn By: LPS  
Designed By: LPS  
Checked By: WSR

# C701