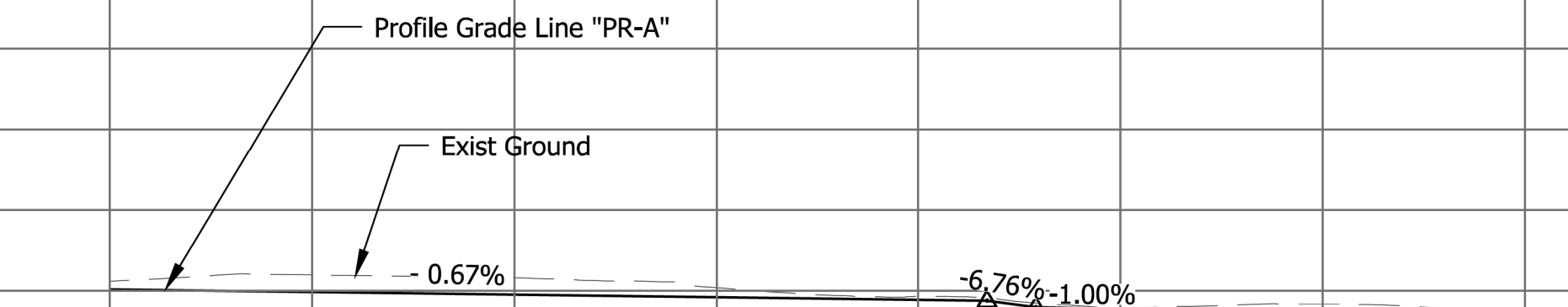
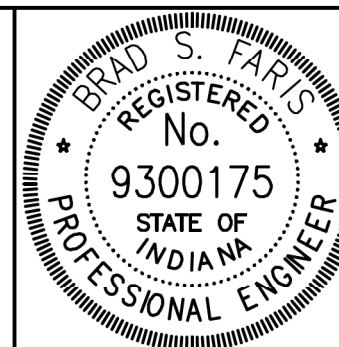


All R/W this sheet described from Line "S-8-CRE", unless otherwise noted.  
Lines "P" to be constructed.

[illegible]

55+00 56+00

- |  |  |   |
|--|--|---|
| <div style="border: 1px solid black; border-radius: 50%; width: 30px; height: 30px; display: flex; align-items: center; justify-content: center; margin-bottom: 5px;">F</div> <div style="border: 1px solid black; border-radius: 50%; width: 30px; height: 30px; display: flex; align-items: center; justify-content: center; margin-bottom: 5px;">F1</div> <div style="border: 1px solid black; border-radius: 50%; width: 30px; height: 30px; display: flex; align-items: center; justify-content: center; margin-bottom: 5px;">CR</div> <div style="border: 1px solid black; border-radius: 50%; width: 30px; height: 30px; display: flex; align-items: center; justify-content: center;">13</div> | <p>Concrete Sidewalk, 4 In. on<br/>4 In. Compacted Aggregate, No. 53, Base</p> <p>HMA for Sidewalk: See Typical Section</p> <p>Concrete Curb Ramp</p> <p>Concrete Curb</p> | <div style="border: 1px solid black; border-radius: 50%; width: 30px; height: 30px; display: flex; align-items: center; justify-content: center; margin-bottom: 5px;">15</div> <p>Combined Concrete Curb and Gutter, Modified</p> |
|--|--|---|



RECOMMENDED FOR APPROVAL	<i>Brook &amp; Fazio</i>	12-06-22
DESIGN ENGINEER		DATE
DESIGNED: <u>BSF</u>	DRAWN: <u>PRD</u>	
CHECKED: <u>BSF</u>	CHECKED: <u>LAR</u>	

CITY OF BLOOMINGTON  
B-LINE TRAIL EXTENSION & MULTI-USE PATH

PLAN & PROFILE  
STA. 54+50 TO STA. 56+33 "P"

SCALE		BRIDGE FILE	
1" = 20'		N/A	
VERTICAL SCALE		DESIGNATION	
1" = 10'		1700735	
SURVEY BOOK		SHEETS	
N/A		28	of 106
CONTRACT		PROJECT	
R-40293		1700735	



