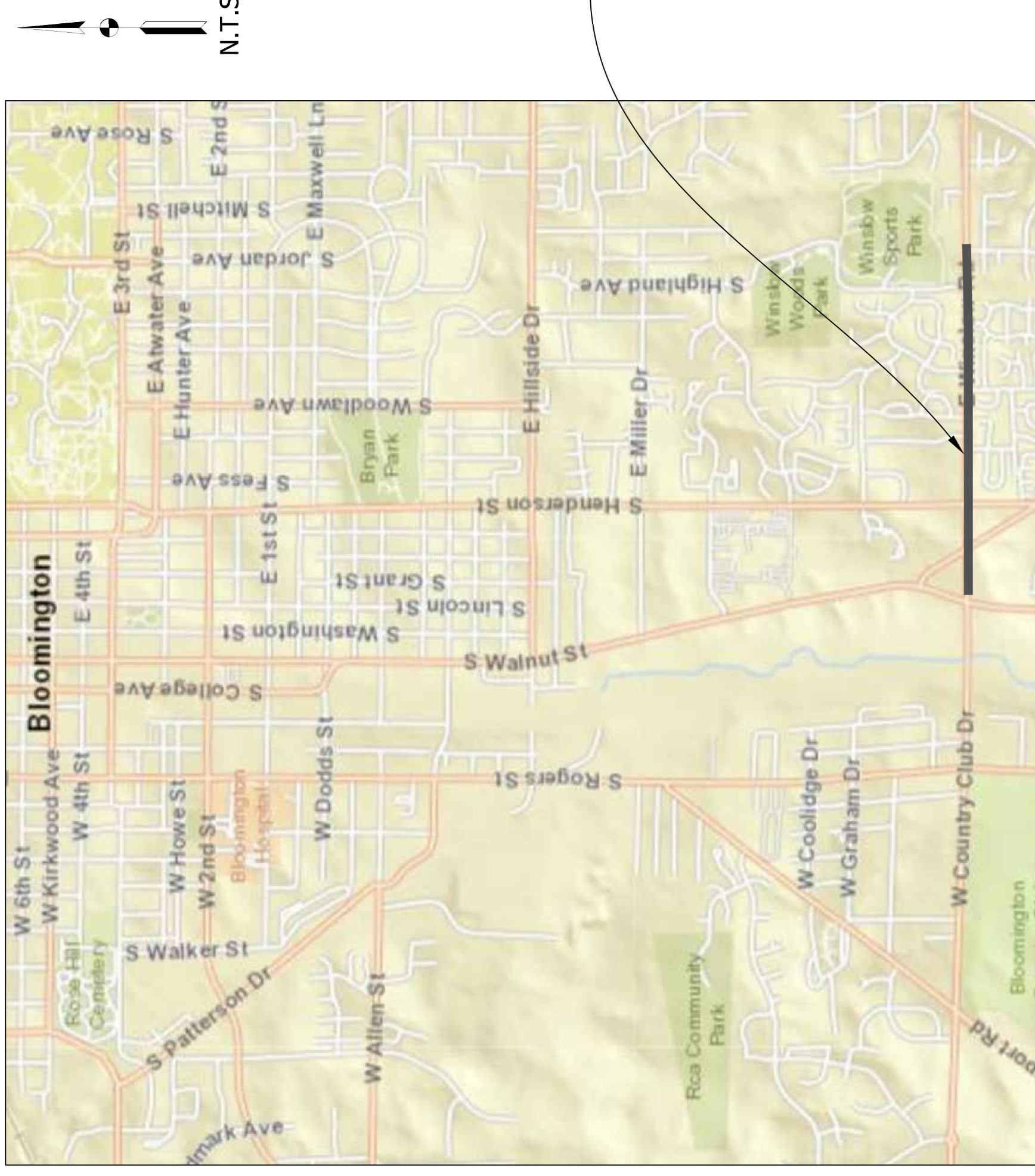




WINSLOW (WALNUT TO ALLENDALE) RESURFACING

ROUTE: WINSLOW ROAD, STARTING 41' EAST OF THE EAST LEG STOP BAR OF THE INTERSECTION OF WALNUT STREET & WINSLOW ROAD TO EAST END OF THE INTERSECTION OF WALNUT STREET & ALLENDALE DRIVE
SOUTHEAST SECTION LINE OF SECTION 9, T-8-N, R-1-W, PERRY TOWNSHIP, MONROE COUNTY, INDIANA
MILLING, HMA PAVEMENT, SIDEWALK, CURB RAMP AND PAVEMENT MARKING REPLACEMENT.



PROJECT LOCATION

DATA	
TRAFFIC DATA	XXX(ROAD NAME)
AADT (2021)	
AADT (2041 PROJECTED)	
DHV (2041 PROJECTED)	
DIRECTIONAL DISTRIBUTION	
TRUCKS	
DESIGN DATA	XXX(ROAD NAME)
DESIGN SPEED	XXX MPH
PROJECT DESIGN CRITERIA	PEDESTRIAN
FUNCTIONAL CLASSIFICATION	LOCAL
RURAL/URBAN	RURAL
TERRAIN	LEVEL
ACCESS CONTROL	NA

GENERAL NOTES:

Pavement Patch, item "p", shall follow Asphalt Surface Street Cut Repair detail. Flowable fill is not required when there is no trench. Asphalt sealer at joints is not applicable if area is included within surface overlay. "p" locations are not specified in all locations on plan sheets. "p" shall be 12" width when used adjacent to new "13", "15", and CR, installation.

Contractor shall minimize disruption to adjacent landscaping. Any disturbed landscape areas shall receive mulched seeding.

Sidewalks and Curb Ramps shall comply with PROWAG and INDOT standard details. Detectable Warning Surfaces shall comply with the City's approved material list.

Contractor shall contact Indiana Underground Location Service, 811, prior to commencing excavation work.

Blue raised pavement markers shall be installed adjacent to existing fire hydrants. Hydrant locations not shown on plans.

All longline pavement markings are dimensioned to face of curb (FOC), lip of gutter or edge of pavement and center of stripe. For double lane lines, dimensions are to the point midway between the two lines.

Maintenance of traffic (vehicular and pedestrian): Continuous maintenance of access to businesses and residences shall be provided along with protection of the public from construction activities at all times. Temporary traffic control shall be provided by the contractor and shall be in accordance with the latest edition of the Indiana MUTCD. During paving operations, the Contractor is required to provide temporary traffic control consistent with short-duration or mobile operations. During concrete operations requiring use of the roadway, the Contractor is required to provide temporary traffic control consistent with a lane closure on a two-lane road using flaggers. The contractor shall limit blocking the existing sidewalk to only times necessitated by sidewalk construction work. Appropriate pedestrian maintenance of traffic signage shall be in place during any sidewalk disruptions. A pedestrian walkaround consistent with City of Bloomington Municipal Code 12.08.110 shall be provided if a portion of the sidewalk is closed for more than 48 hours.

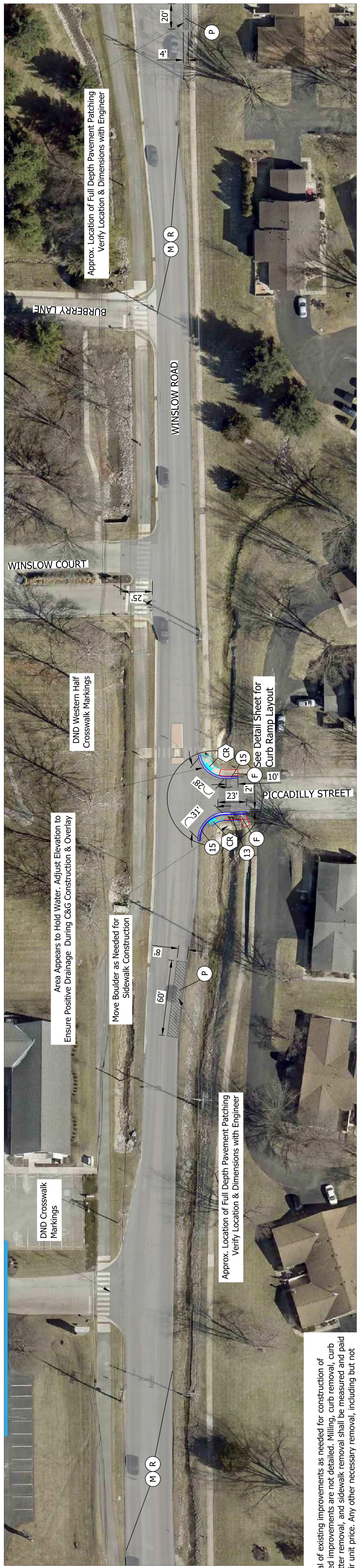
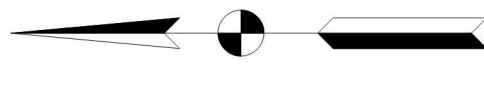
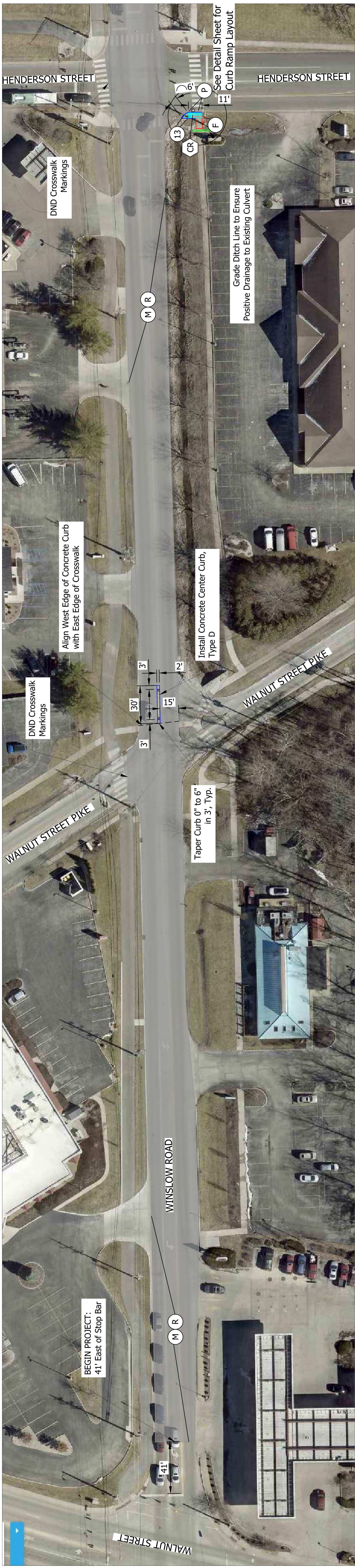
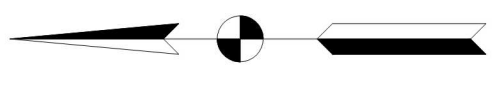
Contractor shall be responsible for keeping the project site in a neat and safe condition at all times

CITY OF BLOOMINGTON STANDARD DRAWINGS FOUND AT: BLOOMINGTON.IN.GOV/ENGINEERING/RESOURCES TO BE USED WITH THESE PLANS

INDIANA DEPARTMENT OF TRANSPORTATION STANDARD SPECIFICATIONS DATED 2022 AND CURRENT SUPPLEMENTS THERETO, TO BE USED WITH THESE PLANS

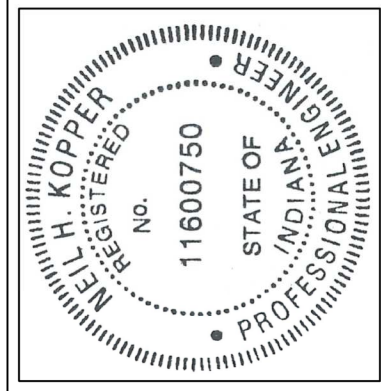
CITY OF BLOOMINGTON ENGINEERING DEPARTMENT	HORIZONTAL SCALE	BRIDGE FILE
	VERTICLE SCALE	DESIGNATION
WINSLOW (WALNUT TO ALLENDALE) RESURFACING	SURVEY BOOK	SHEETS
	CONTRACT	01 of 08 PROJECT
RECOMMENDED FOR APPROVAL	ENGINEER	DATE
DESIGNED: NHK	DRAWN: PRD	
CHECKED: NHK	CHECKED: PRD	

CITY OF BLOOMINGTON
MONROE COUNTY
INDIANA



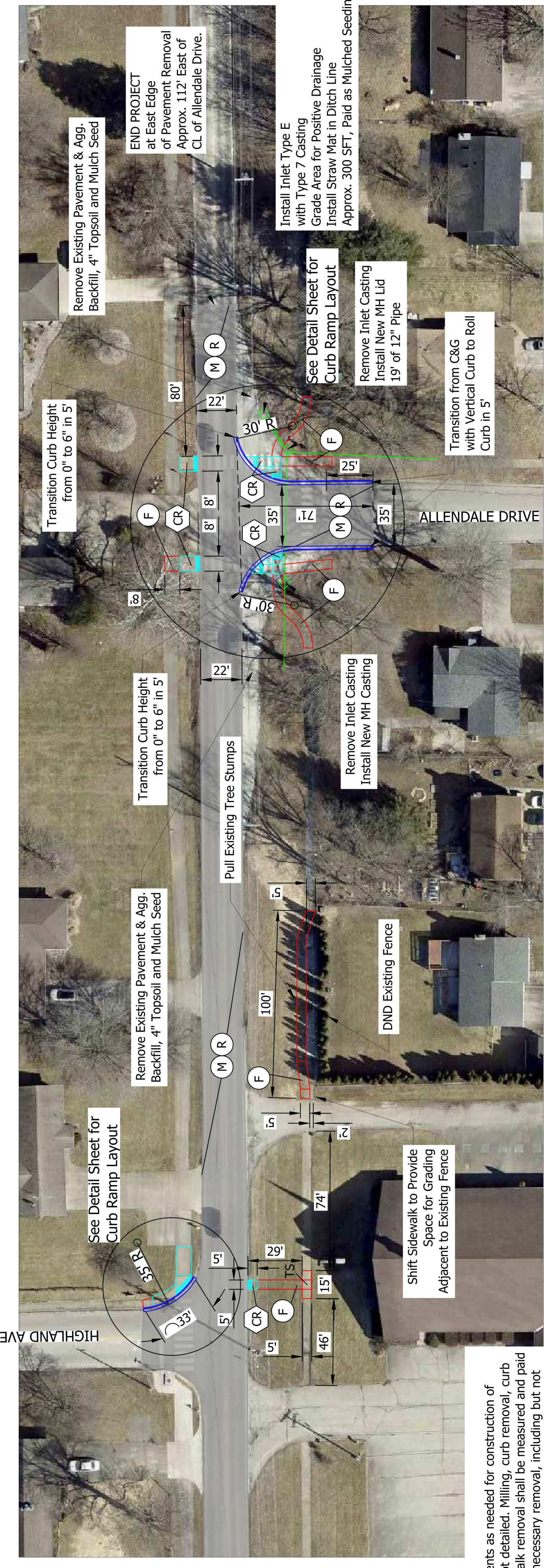
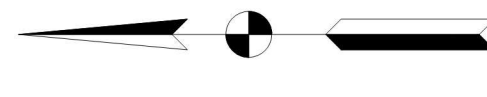
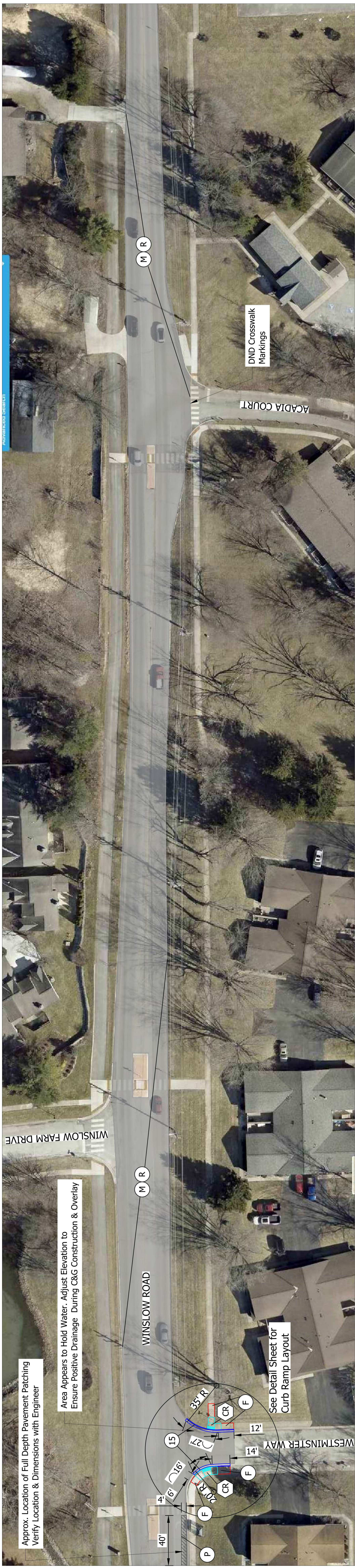
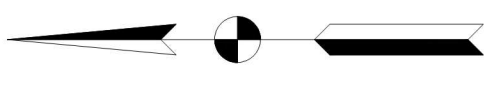
Notes:
 Removal of existing improvements as needed for construction of proposed improvements are not detailed. Milling, curb removal, curb and gutter removal, and sidewalk removal shall be measured and paid per their unit price. Any other necessary removal, including but not limited to full depth pavement removal, drainage structure removal, and soil excavation, shall be included within the cost of Clearing Right of Way.
 Dimensions are approximate and shall be verified by Engineer prior to start of work.

(M)	Milling, Asphalt, 1-1/2 in.	(13)	Concrete Curb
(R)	165 #/syd HMA Surface, Type B, 64, 9.5 mm	(15)	Concrete Curb and Gutter, Modified
(F)	Sidewalk, Concrete, 4 In., ON #53 Agg., 4 In.	(P)	Patch, 165 #/syd HMA Surface, ON PCCP, 9 In.
(CR)	Curb Ramp, Concrete		



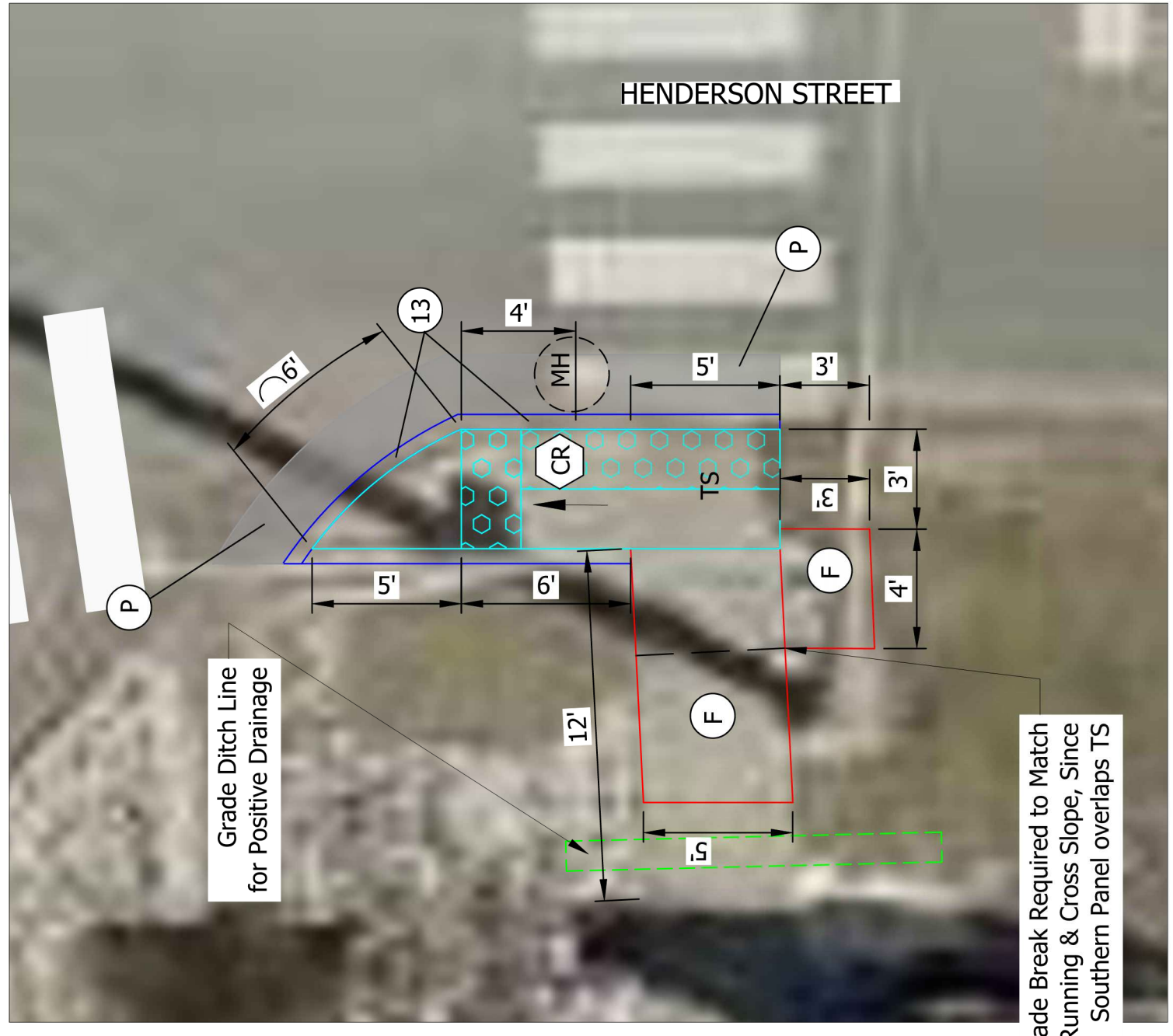
RECOMMENDED FOR APPROVAL	<i>[Signature]</i>	ENGINEER	DATE	02/27/2023
DESIGNED: NHK		DRAWN: PRD		
CHECKED: NHK		CHECKED: PRD		

CITY OF BLOOMINGTON ENGINEERING DEPARTMENT	
HORIZONTAL SCALE	1" = 40'
VERTICLE SCALE	N/A
SURVEY BOOK	N/A
CONTRACT	N/A
SHEETS	02 of 08
PROJECT	WINSLOW RESURFACING

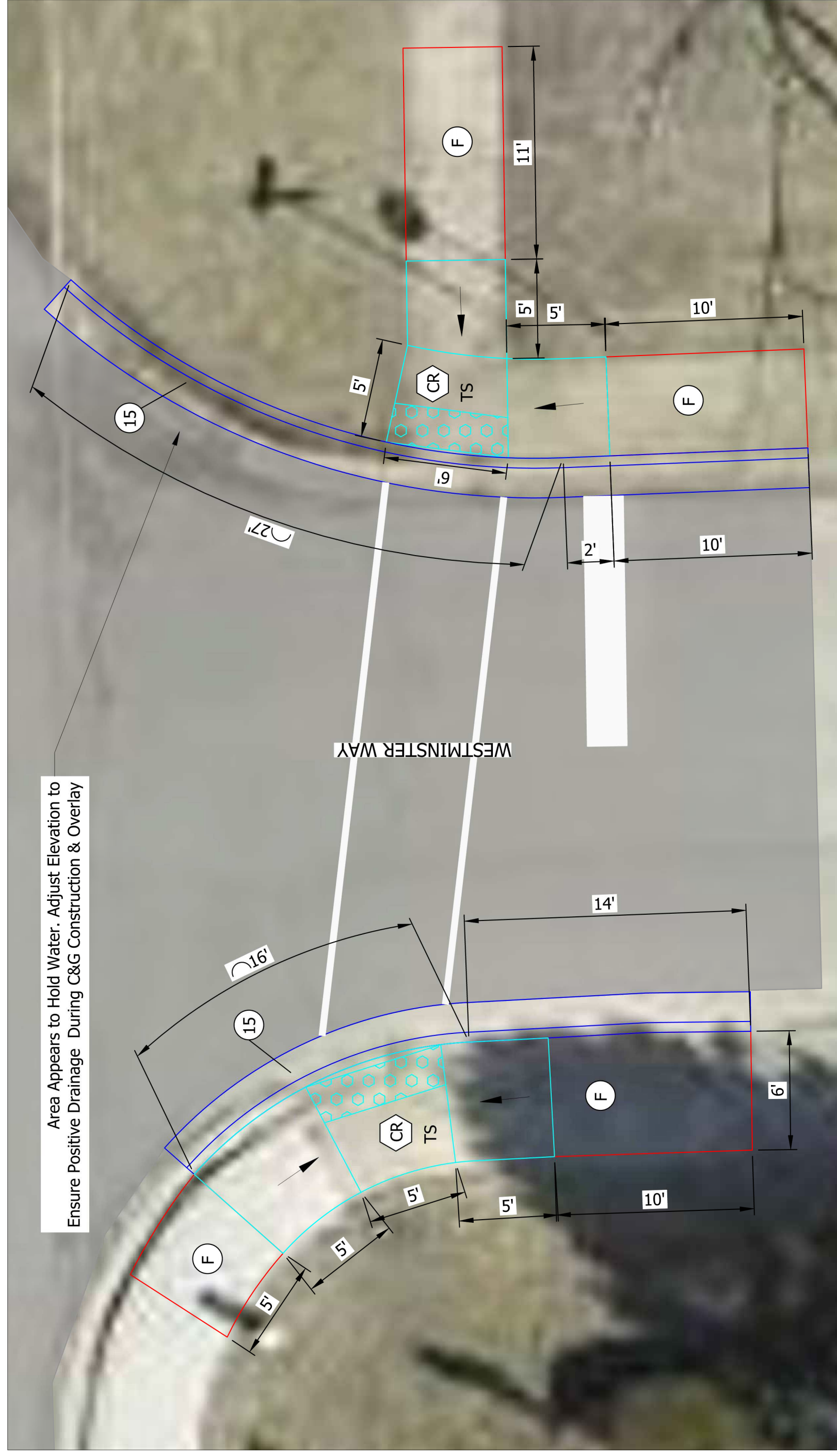


Notes:
 Removal of existing improvements as needed for construction of proposed improvements are not detailed. Milling, curb removal, curb and gutter removal, and sidewalk removal shall be measured and paid per their unit price. Any other necessary removal, including but not limited to full depth pavement removal, drainage structure removal, and soil excavation, shall be included within the cost of Clearing Right of Way.
 Dimensions are approximate and shall be verified by Engineer prior to start of work.

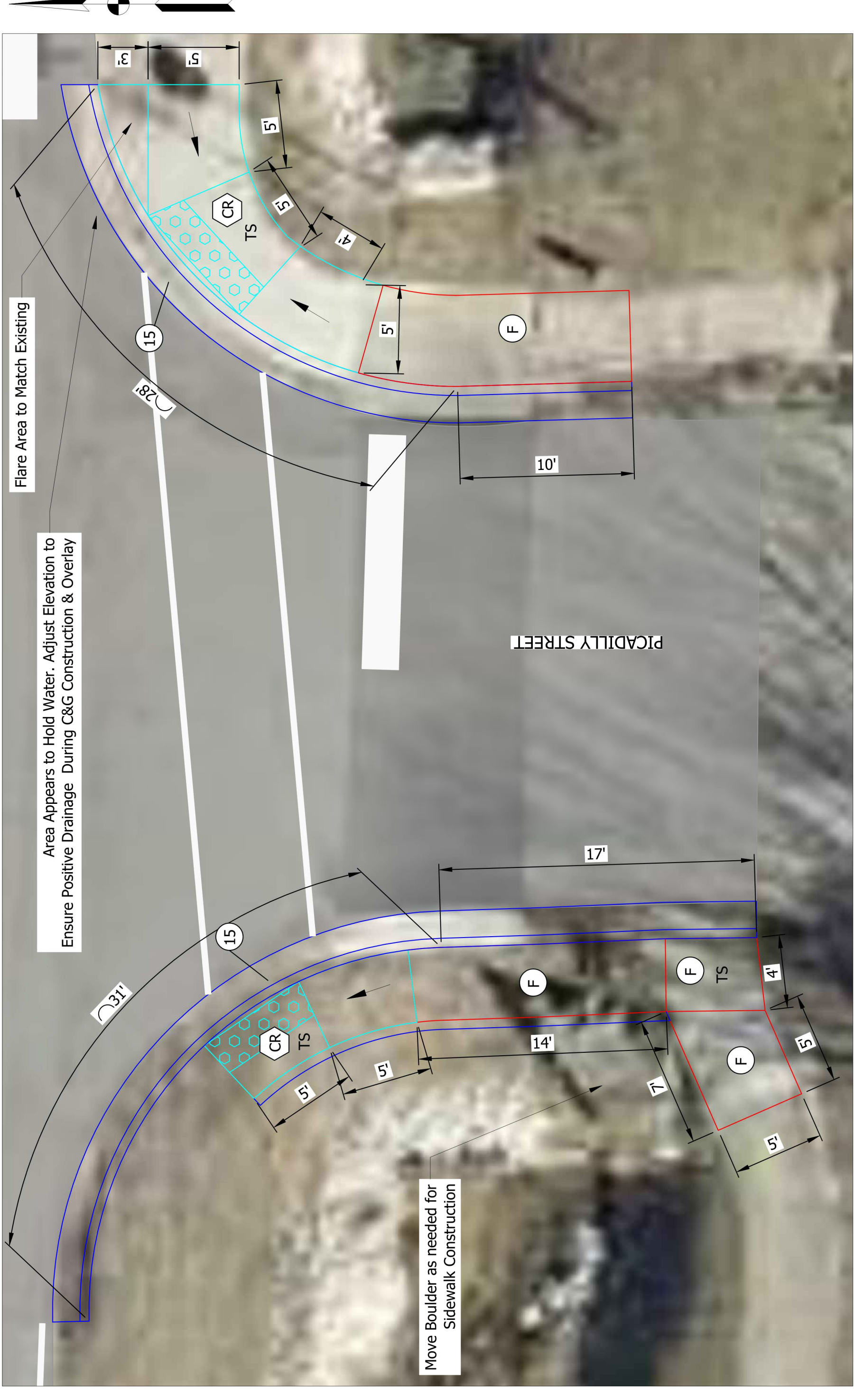
(M)	Milling, Asphalt, 1-1/2 in.	(13)	Concrete Curb	CITY OF BLOOMINGTON ENGINEERING DEPARTMENT	RECOMMENDED FOR APPROVAL		02/27/2023	DATE	HORIZONTAL SCALE 1" = 40'	BRIDGE FILE N/A
(R)	165 #/syd HMA Surface, Type B, 64, 9.5 mm	(15)	Concrete Curb and Gutter, Modified		DESIGNED: NHK	DRAWN: PRD			VERTICLE SCALE N/A	DESIGNATION N/A
(F)	Sidewalk, Concrete, 4 In.	(P)	Patch, 165 #/syd HMA Surface, ON PCCP, 9 In.		CHECKED: NHK	CHECKED: PRD			SURVEY BOOK N/A	SHEETS 03 of 08
(CR)	Curb Ramp, Concrete, w/ Detectable Warning	(TS)	Turning Space, 1.50% Ea. Way Desirable, 2.00% Max.	WINSLOW (WALNUT TO ALLENDALE) RESURFACING					CONTRACT N/A	PROJECT WINSLOW RESURFACING



SOUTHWEST CORNER WINSLOW/HENDERSON
Scale: 1"=5'

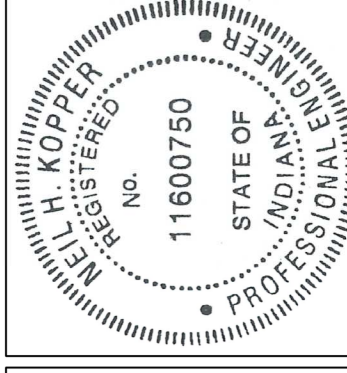


WINSLOW/WESTMINSTER WAY INTERSECTION
Scale: 1"=5'



WINSLOW/PICADILLY INTERSECTION
Scale: 1"=5'

- (M) Milling, Asphalt, 1-1/2 in.
- (R) 165 #/syd HMA Surface, Type B, 64, 9.5 mm
- (F) Sidewalk, Concrete, 4 In.
- (CR) Curb Ramp, Concrete
- (13) Concrete Curb
- (15) Concrete Curb and Gutter, Modified
- (P) Patch, 165 #/syd HMA Surface, ON PCCP, 9 In.
- (TS) Turning Space, 1.50% Ea. Way Desirable, 2.00% Max.

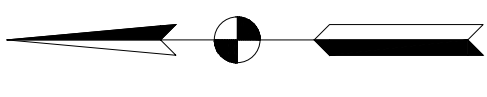


RECOMMENDED FOR APPROVAL	<i>[Signature]</i>	ENGINEER	DATE	02/27/2023
DESIGNED: NHK		DRAWN: PRD		
CHECKED: NHK		CHECKED: PRD		

CITY OF BLOOMINGTON ENGINEERING DEPARTMENT		HORIZONTAL SCALE	BRIDGE FILE
		AS NOTED	N/A
		VERTICLE SCALE	DESIGNATION
		N/A	N/A
		SURVEY BOOK	SHEETS
		N/A	04
		CONTRACT	PROJECT
		N/A	WINSLOW RESURFACING

WINSLOW (WALNUT TO ALLENDALE) RESURFACING CURB RAMP DETAILS

Notes:
Removal of existing improvements as needed for construction of proposed improvements are not detailed. Milling, curb removal, curb and gutter removal, and sidewalk removal shall be measured and paid per their unit price. Any other necessary removal, including but not limited to full depth pavement removal, drainage structure removal, and soil excavation, shall be included within the cost of Clearing Right of Way.
Dimensions are approximate and shall be verified by Engineer prior to start of work.



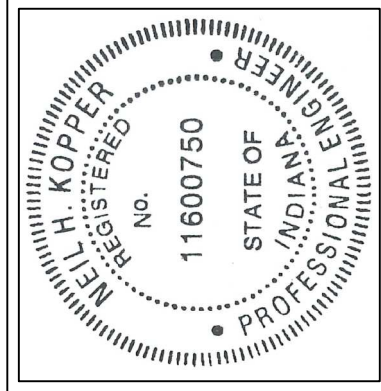
CURB RAMP DETAILS
WINSLOW/HIGHLAND INTERSECTION
 Scale: 1"=5'

Notes:
 Removal of existing improvements as needed for construction of proposed improvements are not detailed. Milling, curb removal, curb and gutter removal, and sidewalk removal shall be measured and paid per their unit price. Any other necessary removal, including but not limited to full depth pavement removal, drainage structure removal, and soil excavation, shall be included within the cost of Clearing Right of Way.
 Dimensions are approximate and shall be verified by Engineer prior to start of work.

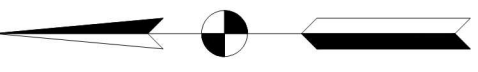
HORIZONTAL SCALE	BRIDGE FILE
AS NOTED	N/A
VERTICLE SCALE	DESIGNATION
N/A	N/A
SURVEY BOOK	SHEETS
N/A	05 of 08
CONTRACT	PROJECT
N/A	WINSLOW RESURFACING

CITY OF BLOOMINGTON ENGINEERING DEPARTMENT	WINSLOW (WALNUT TO ALLENDALE) RESURFACING CURB RAMP DETAILS
---	--

RECOMMENDED FOR APPROVAL	ENGINEER	DATE
	<i>[Signature]</i>	02/27/2023
DESIGNED: NHK	DRAWN: PRD	
CHECKED: NHK	CHECKED: PRD	



(M)	Milling, Asphalt, 1-1/2 in.	(13)	Concrete Curb
(R)	165 #/syd HMA Surface, Type B, 64, 9.5 mm	(15)	Concrete Curb and Gutter, Modified
(F)	Sidewalk, Concrete, 4 In.	(P)	Patch, 165 #/syd HMA Surface, ON PCCP, 9 In.
(CR)	Curb Ramp, Concrete	TS	Turning Space, 1.50% Ea. Way Desirable, 2.00% Max.



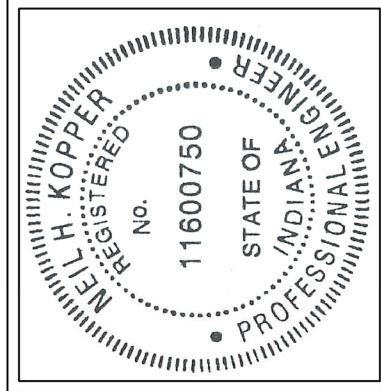
Notes:
 Removal of existing improvements as needed for construction of proposed improvements are not detailed. Milling, curb removal, curb and gutter removal, and sidewalk removal shall be measured and paid per their unit price. Any other necessary removal, including but not limited to full depth pavement removal, drainage structure removal, and soil excavation, shall be included within the cost of Clearing Right of Way.
 Dimensions are approximate and shall be verified by Engineer prior to start of work.

CURB RAMP DETAILS
WINSLOW/ALLELENDALE INTERSECTION
 Scale: 1"=5'

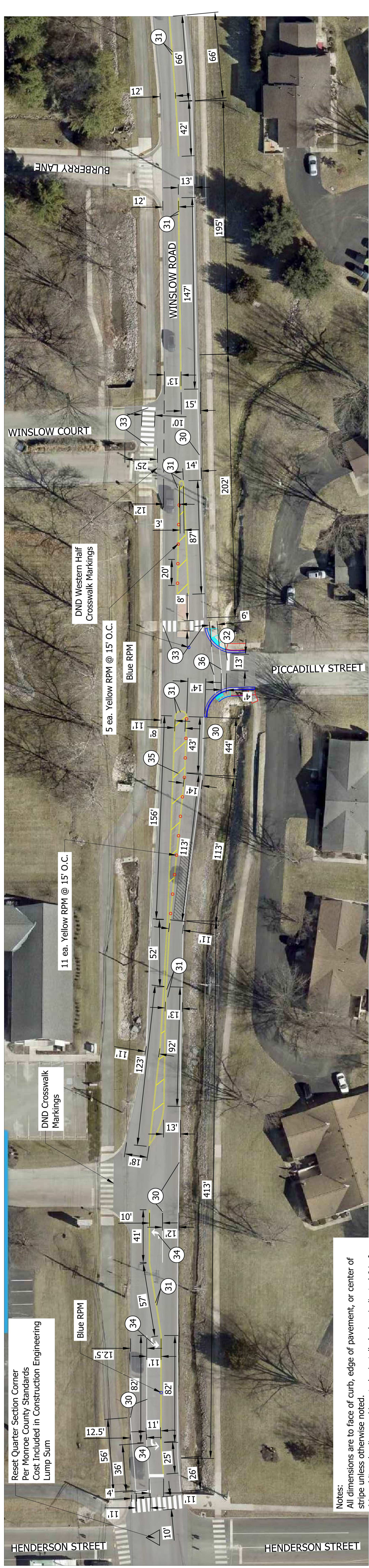
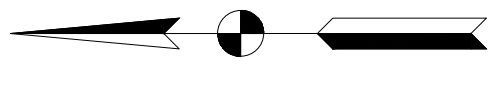
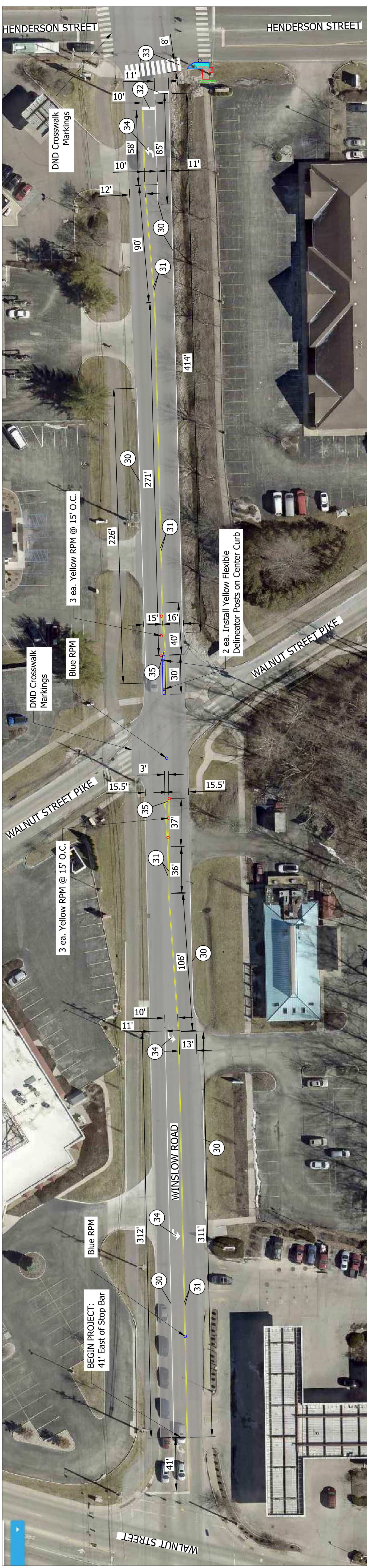
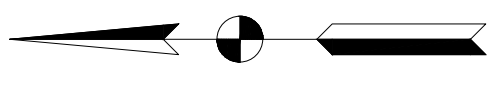
HORIZONTAL SCALE	BRIDGE FILE
AS NOTED	N/A
VERTICLE SCALE	DESIGNATION
N/A	N/A
SURVEY BOOK	SHEETS
N/A	06 of 08
CONTRACT	PROJECT
N/A	WINSLOW RESURFACING

CITY OF BLOOMINGTON ENGINEERING DEPARTMENT	WINSLOW (WALNUT TO ALLENDALE) RESURFACING CURB RAMP DETAILS
--	--

RECOMMENDED FOR APPROVAL	02/27/2023	DATE
	ENGINEER	
DESIGNED: NHK	DRAWN: PRD	
CHECKED: NHK	CHECKED: PRD	

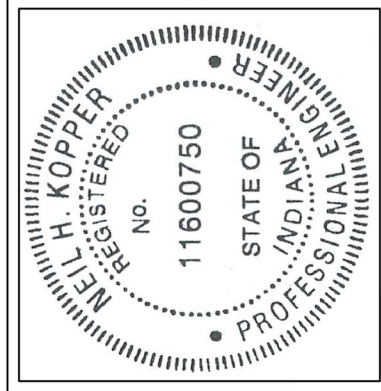


(M)	Milling, Asphalt, 1-1/2 in.	(13)	Concrete Curb
(R)	165 #/syd HMA Surface, Type B, 64, 9.5 mm	(15)	Concrete Curb and Gutter, Modified
(F)	Sidewalk, Concrete, 4 In.	(P)	Patch, 165 #/syd HMA Surface, ON PCCP, 9 In.
(CR)	Curb Ramp, Concrete	(TS)	Turning Space, 1.50% Ea. Way Desirable, 2.00% Max.



Notes:
 All dimensions are to face of curb, edge of pavement, or center of stripe unless otherwise noted.
 4 in. white edge line markings to be installed when indicated 6 in from edge of pavement.
 Dimensions are approximate and shall be verified by Engineer prior to start of work.
 Raised pavement markers (RPMs) shall be snowplowable

- 30 Line, Thermoplastic, Solid, White, 4 in.
- 31 Line, Thermoplastic, Solid, Yellow, 4 in.
- 32 Transverse Markings, Thermoplastic, Stop Bar, White 24 in.
- 33 Transverse Markings, Thermoplastic, Crosswalk Line, White 24 in. @ 4' O.C.
- 34 Pavement Message Markings, Thermoplastic, White, Arrow
- 35 Crosshatch Line, Thermoplastic, Yellow, 12 in.
- 36 Transverse Markings, Thermoplastic, Crosswalk Line, White, 6 in.

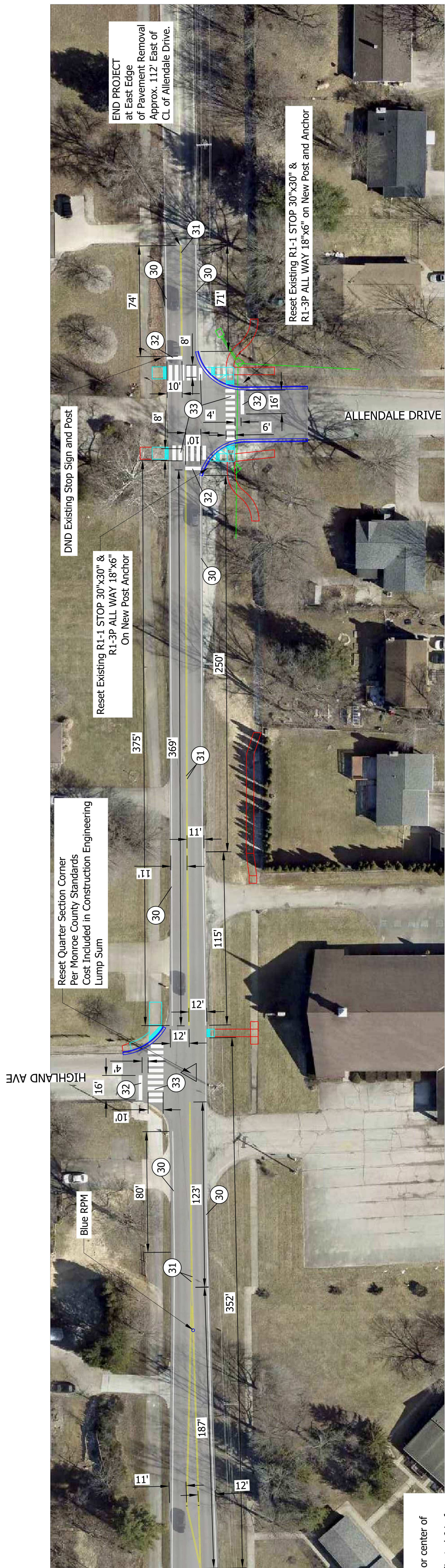
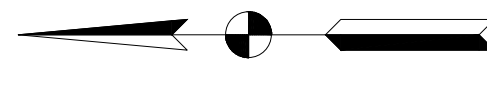
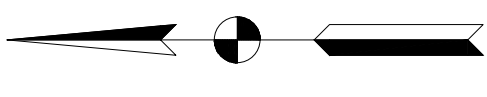


RECOMMENDED FOR APPROVAL		ENGINEER	DATE
DESIGNED: NHK		DRAWN: PRD	
CHECKED: NHK		CHECKED: PRD	

**CITY OF BLOOMINGTON
 ENGINEERING DEPARTMENT**

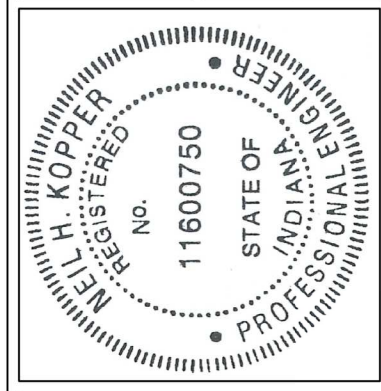
**WINSLOW (WALNUT TO ALLENDALE)
 RESURFACING
 PAVEMENT MARKINGS**

HORIZONTAL SCALE	BRIDGE FILE
1" = 40'	N/A
VERTICLE SCALE	DESIGNATION
N/A	N/A
SURVEY BOOK	SHEETS
N/A	07 of 08
CONTRACT	PROJECT
N/A	WINSLOW RESURFACING



Notes:
 All dimensions are to face of curb, edge of pavement, or center of stripe unless otherwise noted.
 4 in. white edge line markings to be installed when indicated 6 in from edge of pavement.
 Dimensions are approximate and shall be verified by Engineer prior to start of work.
 Raised pavement markers (RPMs) shall be snowplowable

- 30 Line, Thermoplastic, Solid, White, 4 in.
- 31 Line, Thermoplastic, Solid, Yellow, 4 in.
- 32 Transverse Markings, Thermoplastic, Stop Bar, White 24 in.
- 33 Transverse Markings, Thermoplastic, Crosswalk Line, White 24 in. @ 4' O.C.
- 34 Pavement Message Markings, Thermoplastic, White, Arrow
- 35 Crosshatch Line, Thermoplastic, Yellow, 12 in.
- 36 Transverse Markings, Thermoplastic, Crosswalk Line, White, 6 in.



RECOMMENDED FOR APPROVAL	<i>[Signature]</i>	ENGINEER	DATE	02/27/2023
DESIGNED: NHK		DRAWN: PRD		
CHECKED: NHK		CHECKED: PRD		

**CITY OF BLOOMINGTON
 ENGINEERING DEPARTMENT**

**WINSLOW (WALNUT TO ALLENDALE)
 RESURFACING
 PAVEMENT MARKINGS**

HORIZONTAL SCALE	1" = 40'	BRIDGE FILE	N/A
VERTICLE SCALE	N/A	DESIGNATION	N/A
SURVEY BOOK	N/A	SHEETS	08 of 08
CONTRACT	N/A	PROJECT	WINSLOW RESURFACING