

ADDENDUM NO. 1
TO THE
DRAWINGS AND SPECIFICATIONS
FOR THE
Hopewell Phase I East Infrastructure – Re-Bid

Issued From: The City of Bloomington
Engineering Department
Post Office Box 100
401 North Morton Street, Suite #130
Bloomington, Indiana 47402

Issue Date: April 12, 2023

Letting Date: May 3, 2023

This Addendum No. 1 to the drawings and specifications shall supplement, amend, and become a part of the Bid documents, plans, and specifications for the Hopewell Phase I East Infrastructure Re-Bid project. All bids and construction contracts shall be based on these modifications to the original contract documents. Bidders shall acknowledge receipt of this Addendum on the Bid Form. Failure to do so may subject the Bidder to disqualification.

Item No. 1: Project Completion Incentive

The incentive date is October 31, 2024. In order to induce the Contractor to expedite the work as much as possible, an additional lump sum payment of \$2,200.00 will be paid as an incentive amount for each consecutive calendar day the project has reached Substantial Completion prior to the incentive date. A limit of 60 calendar days or \$132,000.00 total will be the maximum incentive.

If Substantial Completion is not achieved before the incentive date, then no incentive payment will be made.

An earlier incentive date will not be considered.

The incentive date will not be adjusted for delays in award due to the Contractor's efforts toward conformance with the requirements of the special provisions for the Instruction to Bidders, delays caused by the Contractor in the issuance of the notice to proceed, or delays caused due to adjustments in quantities except as defined below.

The incentive date will be adjusted due to delays caused by the Owner in issuance of the notice to proceed in accordance with 108.08 only if such delays affect the controlling operation of the incentive operations.

The incentive date will be adjusted if the work is materially changed in accordance with 104.02. The limit to any adjustment to the incentive date shall be December 31, 2024. No incentive will be paid for performance of work after December 31, 2024.

Item No. 2: Revisions to the Drawings

Drawing: C101A – Hardscape Details – Perimeter Sidewalk Plan

DELETE existing sheet C101A – Hardscape Details – Perimeter Sidewalk Plan in its entirety and **INSERT** attached revised sheet C101A – Hardscape Details – Perimeter Sidewalk Plan.

Drawing: C203 – Centerstone Lot Utility Plan

DELETE existing sheet C203 – Centerstone Lot Utility Plan in its entirety and **INSERT** attached revised sheet C203 – Centerstone Lot Utility Plan.

Drawing: C212 – Centerstone Underground Detention System Details

DELETE existing sheet C212 – Centerstone Underground Detention System Details in its entirety and **INSERT** attached revised sheet C212 – Centerstone Underground Detention System Details.

Drawing: C301 – Storm Sewer Plan & Profile

DELETE existing sheet C301 – Storm Sewer Plan & Profile in its entirety and **INSERT** attached revised sheet C301 – Storm Sewer Plan & Profile.

Drawing: C501 – Water Plan & Profile

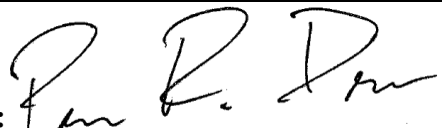
DELETE existing sheet C501 – Water Plan & Profile in its entirety and **INSERT** attached revised sheet C501 – Water Plan & Profile.

Drawing: C601 – Fiber Optic Plan & Profile

DELETE existing sheet C601 – Fiber Optic Plan & Profile in its entirety and **INSERT** attached revised sheet C601 – Fiber Optic Plan & Profile.

Drawing: C802 – Drainage Details

DELETE existing sheet C802 – Drainage Details in its entirety and **INSERT** attached revised sheet C802 – Drainage Details.

	 CERTIFIED BY: _____ PATRICK DIERKES PROJECT ENGINEER CITY OF BLOOMINGTON, IN
--	--

Acknowledge receipt of the addendum by representing it on the Bid Form in Section B and submitting a signed copy with your bid proposal.

(CONTINUED)

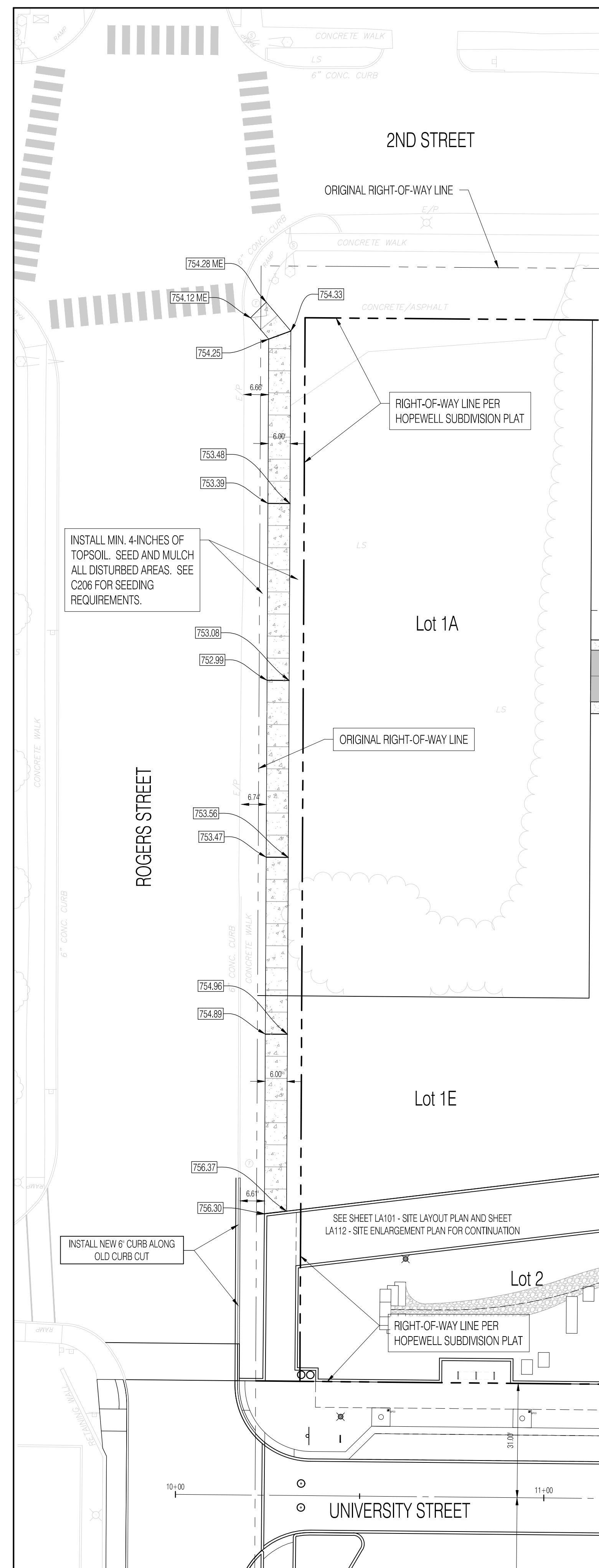
RECEIVED BY: CONTRACTOR (FIRM AND ADDRESS)

SIGNATURE: _____

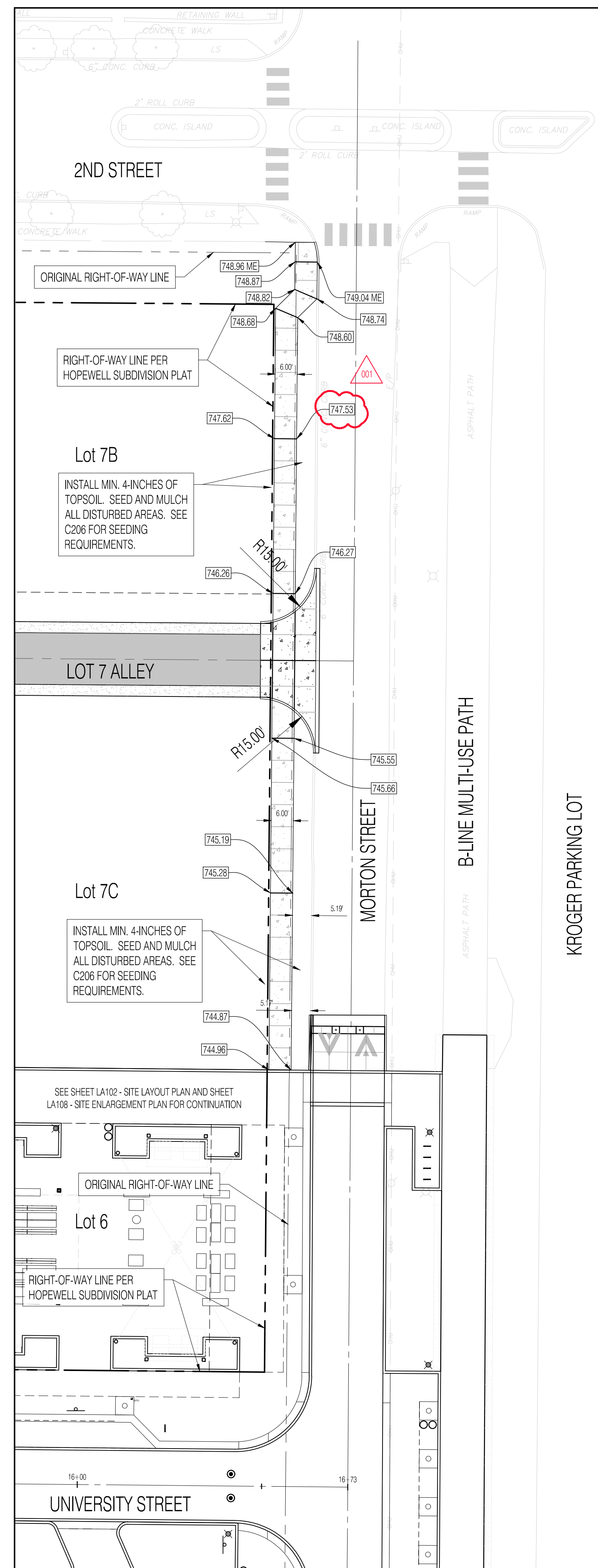
DATE: _____

PRINTED NAME: _____

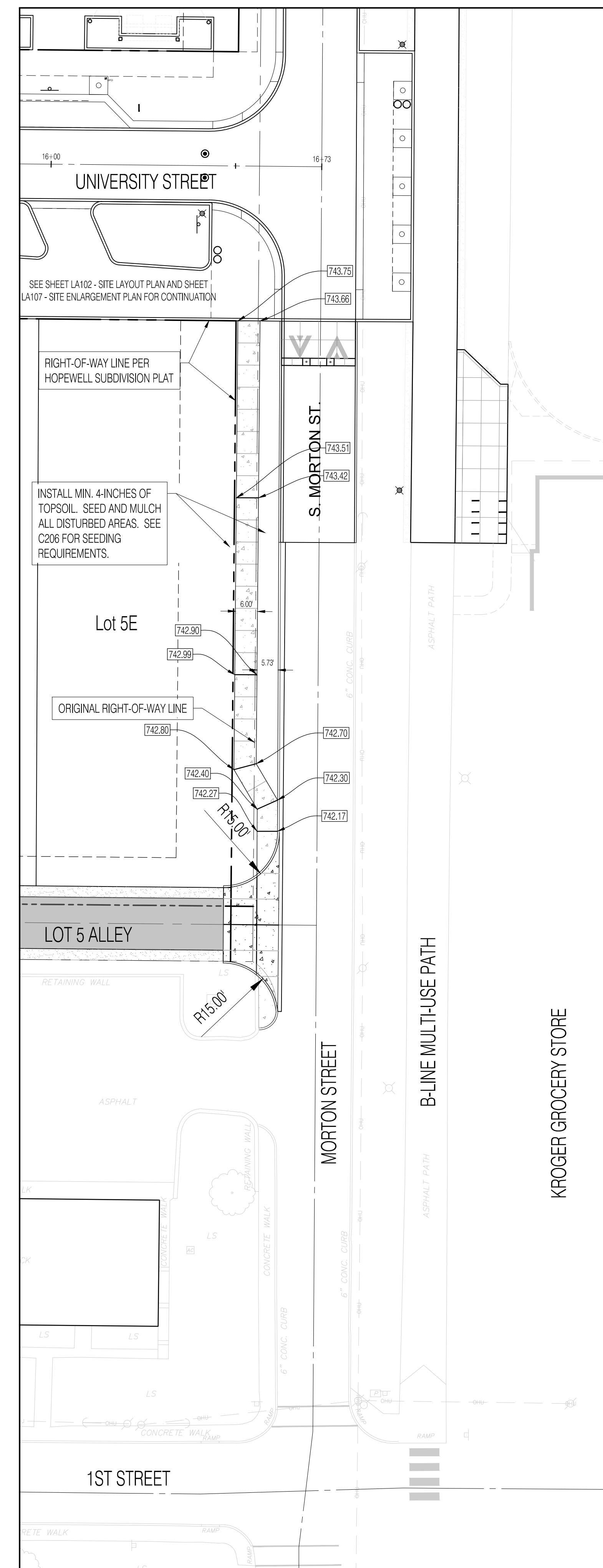
TITLE: _____



ROGERS STREET - NORTH OF UNIVERSITY STREET



MORTON STREET - NORTH OF UNIVERSITY STREET

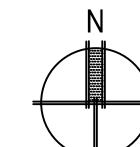


MORTON STREET - SOUTH OF UNIVERSITY STREET



PERIMETER SIDEWALK PLAN

Scale: 1" = 20'-0"



NO.	DATE	DESCRIPTION
001	04/11/2023	ADDENDUM 1

CLIENT:

 Bloomington, IN 47403

DESIGN TEAM:

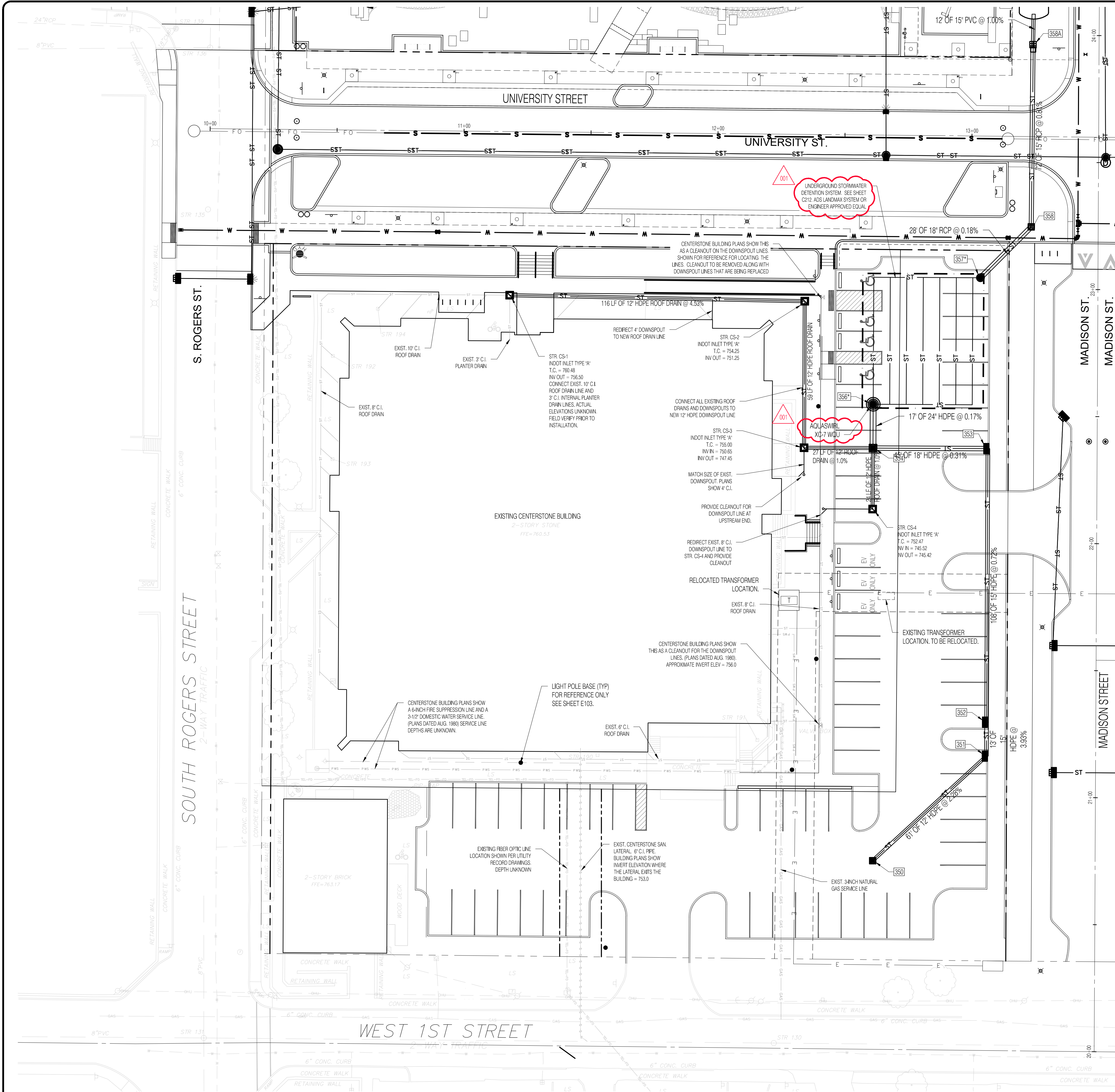
 ARCHITECTURAL
 CIVIL ENGINEERING
 PLANNING
 LAND SURVEYING

CERTIFIED BY:

 MATTHEW D. WALLACE
 REGISTERED PROFESSIONAL ENGINEER
 INDIANA
 No. 10302418
 STATE OF INDIANA

HOPEWELL INFRASTRUCTURE & SITE ENGINEERING
PHASE 1 EAST - RE-BID
 CITY OF BLOOMINGTON
 BLOOMINGTON, INDIANA 47403

DATE: 03/15/2023	PROJECT NO.: 21-0049
DRAWN BY: RDR	CHECKED BY: MDW
DRAWING STATUS: RE-BID	
SHEET TITLE: PERIMETER SIDEWALK PLAN	
SHEET NO.: C101A	



LEGEND:

- RIGHT OF WAY LINE (EXISTING RW)
- EASEMENT LINE
- CENTER LINE
- RIGHT OF WAY LINE (NEW RW)
- PARKING STRIP
- ST --- STORM SEWER
- 6\"/>

EX EXISTING
 INV INVERT ELEVATION
 MH MAN-HOLE
 RCP REINFORCED CONCRETE PIPE
 TC TOP OF CURB/TOP OF CASTING GRADE

UTILITY NOTES

- CONTRACTOR SHALL SCHEDULE A PRECONSTRUCTION MEETING WITH THE CITY OF BLOOMINGTON UTILITIES (CBU) DEPARTMENT PRIOR TO THE START OF CONSTRUCTION. CALL THE UTILITIES TECHNICIAN AT 812-349-3676 TO INITIATE THIS PROCESS.
- THE UTILITIES INDICATED ON THE PLANS AND SURVEY MAY NOT BE A COMPLETE INVENTORY OF ALL EXISTING UTILITIES ON AND AROUND THE SITE. THE LOCATION AND SIZE OF THESE UTILITIES MAY BE APPROXIMATE. UTILITY INFORMATION WAS GATHERED OR SUPPLIED BY OTHERS AND THE DESIGN SHOWN ON THESE PLANS RELIES ON THE ACCURACY OF THE UTILITY INFORMATION. THE LANDSCAPE ARCHITECT SHALL NOT BE HELD LIABLE FOR INCORRECT OR MISLEADING UTILITY INFORMATION INDICATED, IMPLIED, OR NOT INDICATED ON THESE PLANS.
- CONTRACTOR SHALL TAKE PARTICULAR CARE WHEN EXCAVATING IN AND AROUND EXISTING UTILITY LINES AND EQUIPMENT. VERIFYING FIELD LOCATIONS OF EXISTING UTILITIES ARE THE RESPONSIBILITY OF THE CONTRACTOR. FIELD LOCATIONS OF EXISTING UTILITIES SHALL BE DETERMINED EITHER BY AN AUTHORIZED REPRESENTATIVE OF THE UTILITY OR A PRIVATE UNDERGROUND UTILITY LOCATER SERVICE PRIOR TO THE START OF EXCAVATING. VERIFY MINIMUM UTILITY COVER REQUIREMENTS BY THE UTILITY. MAINTAIN MINIMUM UTILITY COVER REQUIREMENTS DURING CONSTRUCTION WITHOUT DAMAGING UTILITIES.
- CONTRACTOR SHALL NOTIFY UTILITIES 72 HOURS BEFORE CONSTRUCTION IS TO START TO VERIFY UTILITIES PRESENT ON THE SITE. ALL VERIFICATIONS, LOCATIONS, SIZE, AND DEPTHS SHALL BE MADE BY THE APPROPRIATE UTILITY. WHEN EXCAVATING AROUND OR OVER EXISTING UTILITIES, THE CONTRACTOR SHALL NOTIFY THE UTILITY COMPANY SO A REPRESENTATIVE OF THE UTILITY CAN BE PRESENT DURING THE EXCAVATION TO OBSERVE EXCAVATIONS.
- THE CONTRACTOR SHALL BEAR EXPENSES TO REMOVE, RELOCATE, AND / OR MODIFY UTILITIES REQUIRED TO BE ADJUSTED FOR SUCCESSFUL COMPLETION OF CONSTRUCTION ACTIVITIES. THE CONTRACTOR SHALL VERIFY WITH UTILITIES EXISTING UTILITIES THAT MAY CONFLICT WITH CONSTRUCTION ACTIVITIES. CONTRACTOR SHALL VERIFY PLANNED FUTURE UTILITY IMPROVEMENTS THAT MAY IMPACT CONSTRUCTION ACTIVITIES.
- CONTRACTOR SHALL ADJUST ALL UTILITY COVERS, FRAMES, CASTINGS, LIDS, ACCESS PANELS, STRUCTURES AND RISERS IN SUCH A MANNER TO BE FLUSH WITH PROPOSED FINISH GRADES. CONTRACTOR SHALL TAKE CARE TO NOT DAMAGE UTILITY COVERS, FRAMES, CASTINGS, LIDS, ACCESS PANELS, STRUCTURES AND RISERS DURING CONSTRUCTION.
- CONTRACTOR SHALL COORDINATE WITH UTILITIES FOR RELOCATION, REMOVAL OR ABANDONMENT OF UTILITY FACILITIES ON-SITE OR CROSSING THE SITE. DO NOT INTERRUPT UTILITY FACILITIES SERVING OCCUPIED FACILITIES USED BY THE OWNER OR OTHERS WITHOUT PRIOR WRITTEN AUTHORIZATION.
- COSTS INCURRED BY THE CONTRACTOR COORDINATING NEW UTILITY SERVICES SHALL BE PAID FOR BY THE CONTRACTOR.
- UTILITY CONNECTIONS TO EXISTING FACILITIES SHALL BE VERIFIED WITH THE OWNERS REPRESENTATIVE AND COORDINATED WITH THE UTILITY PRIOR TO BEGINNING CONSTRUCTION ACTIVITIES.
- MAINTAIN SEPARATION REQUIRED BY UTILITIES AND AUTHORITIES HAVING JURISDICTION BETWEEN UTILITIES AND STRUCTURES.
- UTILITY SLEEVES SHALL WHERE INDICATED SHALL BE SCHEDULE 80 PVC PIPE OF DIAMETER NOTED ON DRAWINGS UNLESS NOTED OTHERWISE. WHERE POSSIBLE MULTIPLE PIPE LOCATIONS SHALL BE GANGED OR STACKED TO MINIMIZE SPACE REQUIREMENTS. UTILITY SLEEVES SHALL EXTEND A MINIMUM OF 24\"/>

GENERAL UTILITY NOTES

- THE CONTRACTOR IS CAUTIONED THAT THE LOCATIONS AND/OR ELEVATIONS OF EXISTING UTILITIES AS SHOWN ON THESE PLANS IS BASED ON RECORDS OR VARIOUS UTILITY COMPANIES, AND WHERE POSSIBLE, MEASUREMENTS TAKEN IN THE FIELD. THIS INFORMATION IS NOT TO BE RELIED UPON AS BEING EXACT OR COMPLETE. THE CONTRACTOR IS RESPONSIBLE FOR THE ACCURATE LOCATION OF ALL UTILITIES AND HAZARDS WHETHER SHOWN OR NOT. THE CONTRACTOR MUST CONTACT THE APPROPRIATE UTILITY COMPANY AT LEAST 48 HOURS PRIOR TO ANY EXCAVATION TO REQUEST EXACT FIELD LOCATION OF UTILITIES.
- ALL UTILITY TRENCHES SHALL BEGIN AT THE LOWEST ELEVATION AND SHALL PROGRESS UPWARD.
- WHERE POSSIBLE, ALL UTILITY TRENCHES SHALL BE CUT THROUGH THE COMPACTED SUBGRADE SOIL, AND BACKFILLED PRIOR TO THE PLACEMENT OF THE COMPACTED AGGREGATE PAVEMENT BASE.
- UNLESS STATED OTHERWISE IN THESE CONTRACT DOCUMENTS, THE INSTALLATION OF THE ROOF DRAIN COLLECTOR PIPING SHALL BE THE RESPONSIBILITY OF THE SITE UTILITY CONTRACTOR.
- ALL STORM PIPE (12\"/>

STRUCTURE DATA TABLE

STR. #	TC	INV. IN	INV. OUT	PIPES IN	PIPES OUT	STRUCTURE	CASTING
350	751.70		750.00 (NE)		12\"/>		
351	750.28	748.61 (SW)	748.41 (N)	12\"/>			
352	749.42	747.88 (S)	747.78 (N)	15\"/>			
353	750.77	747.00 (S)	746.80 (W)	15\"/>			
354	752.17	746.66 (E) 747.06 (W) 747.06 (S)	746.26 (N)	18\"/>			
356*	752.55	746.23 (S)		24\"/>			
357*	751.89		746.00 (NE)	18\"/>			
358	750.25	745.95 (SW)	745.68 (N)	18\"/>			
CS-1	757.60		756.50 (E)	12\"/>			
CS-2	754.78	751.25 (W)	751.25 (S)	12\"/>			
CS-3	755.45	750.65 (N)	750.45 (E)	12\"/>			
CS-4	751.91		747.30 (N)	12\"/>			

NOTE: ALL STORMWATER INFRASTRUCTURE LOCATED WITHIN LOTS 3 AND 4, INCLUDING ALL INLETS, MANHOLES, STORM SEWERS, WATER QUALITY UNITS, DETENTION SYSTEMS, ROOF DRAINS, AND OTHER SIMILAR ITEMS, ARE TO BE MAINTAINED BY THE PROPERTY OWNER.

REVISIONS

NO.	DATE	DESCRIPTION
001	04/11/2023	ADDENDUM 1

CLIENT:

CITY OF BLOOMINGTON
Bloomington, IN 47403

DESIGN TEAM

shrewsberry
REA
ARCHITECTURAL
CIVIL ENGINEERING
PLANNING
LAND SURVEYING

BEA
ARCHITECTURAL
CIVIL ENGINEERING
PLANNING
LAND SURVEYING

STYAN PATYK & ASSOCIATES, INC.
528 North Walnut Street
Bloomington, Indiana 47404 (812) 332-8030

CERTIFIED BY:

MATTHEW D. WALLACE
REGISTERED
No. 10302418
STATE OF
INDIANA
PROFESSIONAL ENGINEER

Matthew D. Wallace

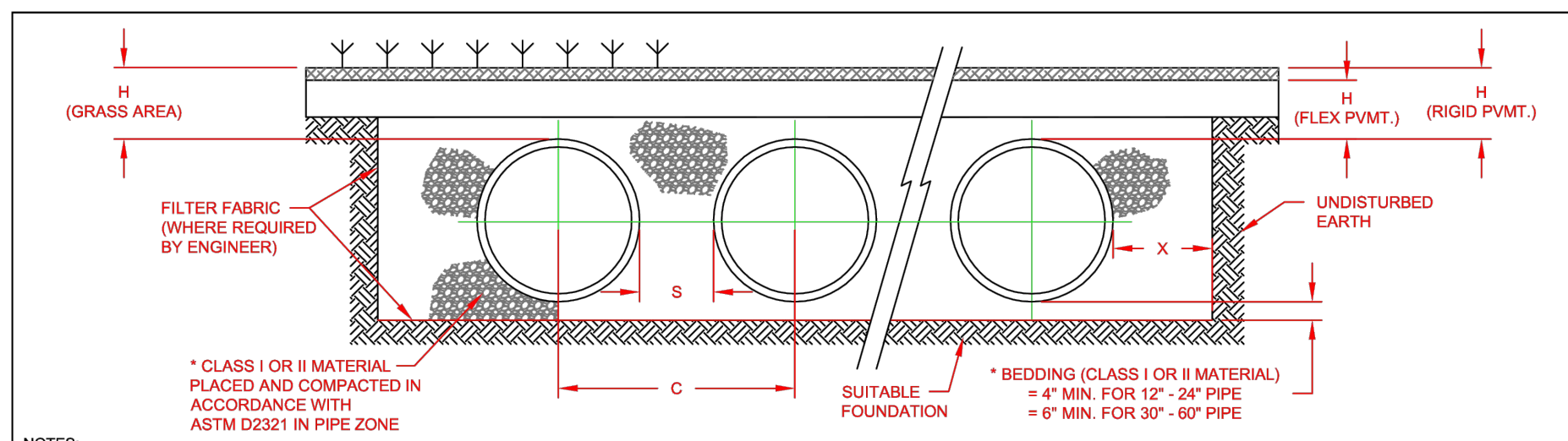
© COPYRIGHTED BY SHREWSBERRY AND ASSOCIATES

HOPEWELL INFRASTRUCTURE & SITE ENGINEERING
PHASE 1 EAST - RE-BID
CITY OF BLOOMINGTON
BLOOMINGTON, INDIANA 47403

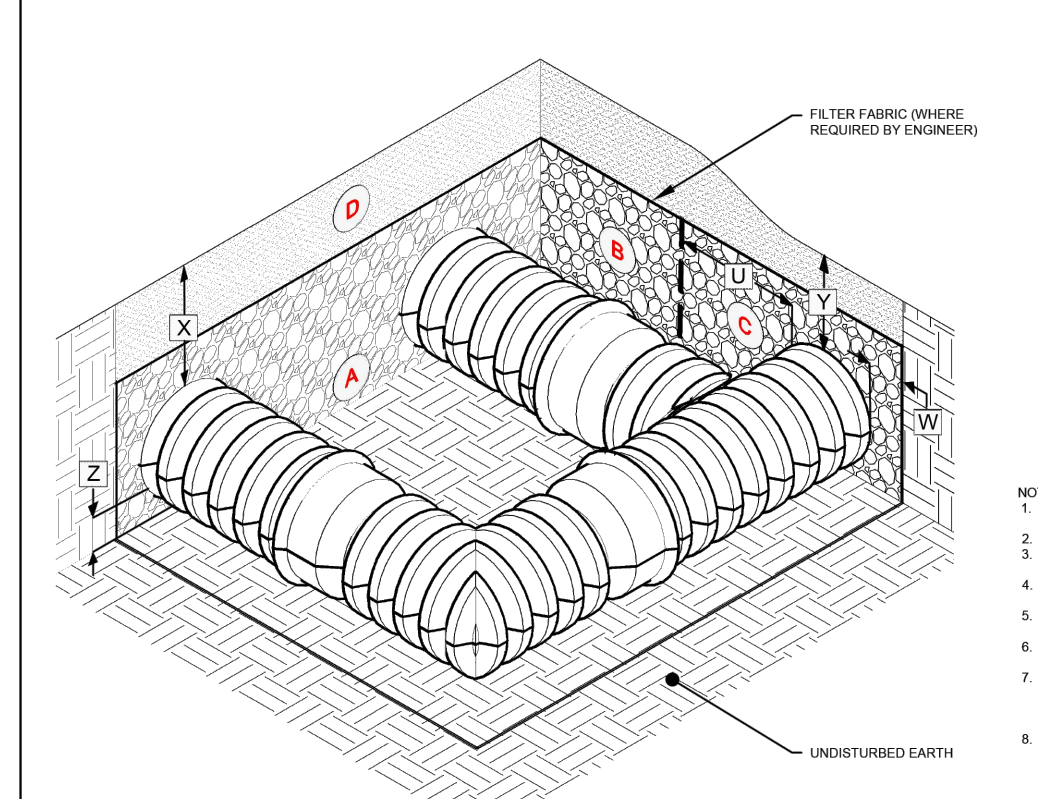
DATE: 03/15/2023 PROJECT NO.: 21-0049
DRAWN BY: RDR CHECKED BY: MDW
DRAWING STATUS: RE-BID
SHEET TITLE: CENTERSTONE LOT UTILITY PLAN
SHEET NO.: C203



UTILITY PLAN
Scale: 1" = 20'-0"

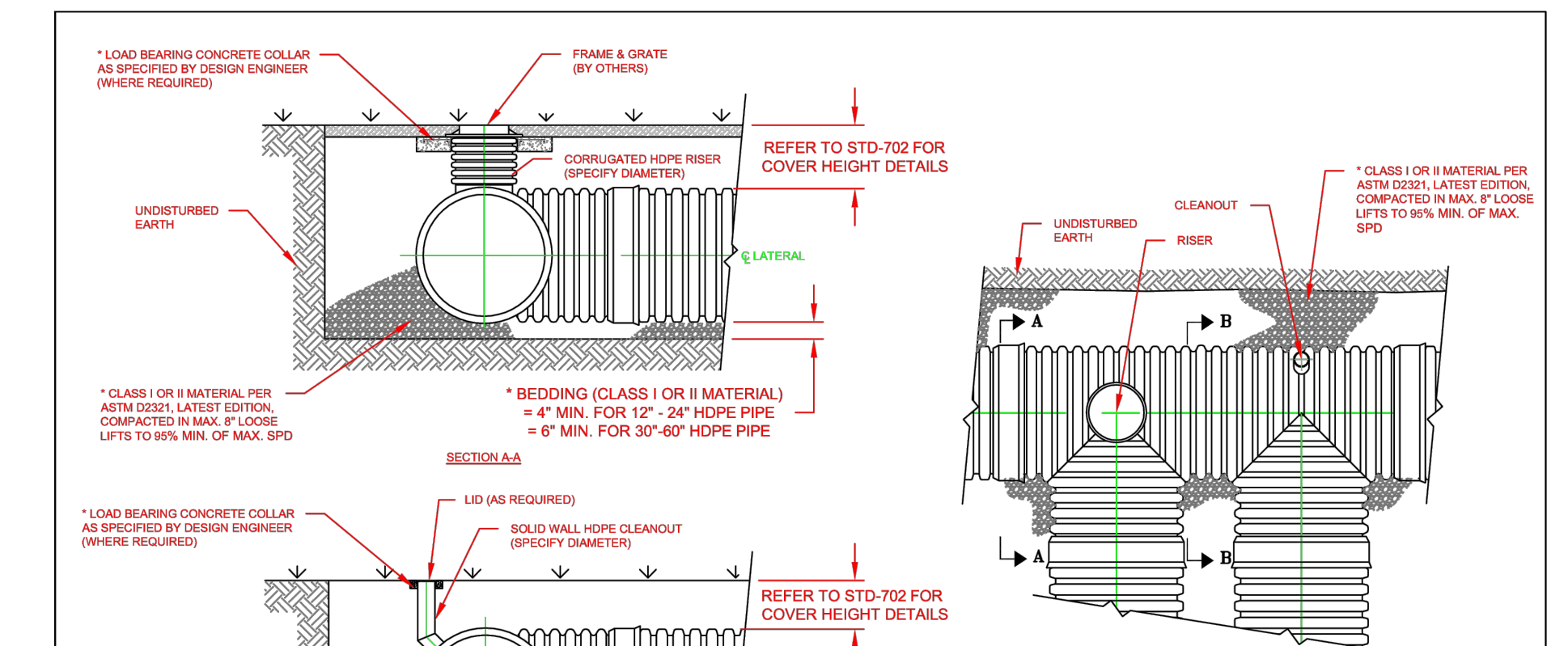


NOMINAL DIAMETER	NOMINAL O.D.	TYPICAL SPACING "S"	TYPICAL SPACING "C"	TYPICAL SIDE WALL "X"	H (NON-TRAFFIC)	H (TRAFFIC)
12"	14.5"	11"	25.5"	8"	12"	12"
15"	17"	11.5"	29"	10"	12"	12"
18"	21"	12"	33"	12"	12"	12"
24"	28"	14"	41.5"	15"	12"	12"
30"	36"	15"	51"	18"	12"	12"
36"	42"	16"	59"	20"	12"	12"
42"	49"	17"	67.5"	22"	12"	12"
48"	56"	18"	76.5"	24"	12"	12"
54"	63"	19"	85.5"	26"	12"	12"
60"	70"	20"	94.5"	28"	12"	12"
72"	84"	22"	113"	32"	12"	12"
84"	98"	24"	132"	36"	12"	12"
96"	112"	26"	151"	40"	12"	12"
108"	126"	28"	170"	44"	12"	12"
120"	140"	30"	189"	48"	12"	12"
132"	154"	32"	208"	52"	12"	12"
144"	168"	34"	227"	56"	12"	12"
156"	182"	36"	246"	60"	12"	12"
168"	196"	38"	265"	64"	12"	12"
180"	210"	40"	284"	68"	12"	12"
192"	224"	42"	303"	72"	12"	12"
204"	238"	44"	322"	76"	12"	12"
216"	252"	46"	341"	80"	12"	12"
228"	266"	48"	360"	84"	12"	12"
240"	280"	50"	379"	88"	12"	12"
252"	294"	52"	398"	92"	12"	12"
264"	308"	54"	417"	96"	12"	12"
276"	322"	56"	436"	100"	12"	12"
288"	336"	58"	455"	104"	12"	12"
300"	350"	60"	474"	108"	12"	12"



NOMINAL DIAMETER	NOMINAL DIAMETER		
	12-24"	30-36"	42-60"
U MIN. FITTING EMBEDMENT LIMIT	12" (305 mm)	12" (305 mm)	12" (305 mm)
V TYPICAL SIDE WALL	12" (305 mm)	12" (305 mm)	12" (305 mm)
W MIN. PIPE COVER DEPTH UNDER NON-TRAFFIC	12" (305 mm)	12" (305 mm)	12" (305 mm)
X MIN. PIPE COVER DEPTH UNDER TRAFFIC	12" (305 mm)	12" (305 mm)	12" (305 mm)
Y MIN. FITTINGS COVER DEPTH UNDER TRAFFIC	12" (305 mm)	12" (305 mm)	12" (305 mm)
Z MIN. FITTINGS COVER DEPTH UNDER TRAFFIC	12" (305 mm)	12" (305 mm)	12" (305 mm)
1 BEDDING DEPTH	4" (102 mm)	4" (102 mm)	4" (102 mm)
2 MINIMUM COVER DEPTH	12" (305 mm)	12" (305 mm)	12" (305 mm)

MATERIAL LOCATION	ASTM MATERIAL CLASSIFICATION	AASHTO MATERIAL CLASSIFICATION	COMPACTION / DENSITY REQUIRED
D	NA*	NA*	PREPARE PER SITE DESIGN ENGINEER'S PLANS. PAVED INSTALLATIONS MAY HAVE SPECIFIC MATERIAL AND PREPARATION REQUIREMENTS.
C	CLASS I OR II	AASHTO M145 A1, A3 OR AASHTO M43 AS, A6, A66, A67, A68	COMPACT TO MAXIMUM 90% STANDARD PROCTOR DENSITY
B	CLASS I OR II	AASHTO M145 A1, A3 OR AASHTO M43 AS, A6, A66, A67, A68	COMPACT PER THE LATEST EDITION OF ASTM D3231 SPECIFICATIONS
A	CLASS I OR II	AASHTO M145 A1, A3 OR AASHTO M43 AS, A6, A66, A67, A68	COMPACT TO 90% STANDARD PROCTOR DENSITY



MATERIAL LOCATION	ASTM MATERIAL CLASSIFICATION	AASHTO MATERIAL CLASSIFICATION	COMPACTION / DENSITY REQUIRED
D	NA*	NA*	PREPARE PER SITE DESIGN ENGINEER'S PLANS. PAVED INSTALLATIONS MAY HAVE SPECIFIC MATERIAL AND PREPARATION REQUIREMENTS.
C	CLASS I OR II	AASHTO M145 A1, A3 OR AASHTO M43 AS, A6, A66, A67, A68	COMPACT TO MAXIMUM 90% STANDARD PROCTOR DENSITY
B	CLASS I OR II	AASHTO M145 A1, A3 OR AASHTO M43 AS, A6, A66, A67, A68	COMPACT PER THE LATEST EDITION OF ASTM D3231 SPECIFICATIONS
A	CLASS I OR II	AASHTO M145 A1, A3 OR AASHTO M43 AS, A6, A66, A67, A68	COMPACT TO 90% STANDARD PROCTOR DENSITY

ADVANCED DRAINAGE SYSTEMS, INC. ("ADS") HAS PREPARED THIS DETAIL BASED ON INFORMATION PROVIDED TO ADS. THIS DRAWING IS INTENDED TO DEPICT THE COMPONENTS AS REQUESTED. ADS HAS NOT PERFORMED ANY ENGINEERING OR DESIGN SERVICES FOR THIS PROJECT, NOR HAS ADS INDEPENDENTLY VERIFIED THE INFORMATION SUPPLIED. THE INSTALLATION DETAILS PROVIDED HEREIN ARE GENERAL RECOMMENDATIONS AND ARE NOT SPECIFIC TO THIS PROJECT. THE DESIGN ENGINEER SHALL REVIEW THESE DETAILS PRIOR TO CONSTRUCTION. IT IS THE ORIGINAL ENGINEER'S RESPONSIBILITY TO ENSURE THE DETAILS PROVIDED HEREIN MEET OR EXCEEDS THE APPLICABLE NATIONAL, STATE, OR LOCAL REQUIREMENTS AND TO ENSURE THAT THE DETAILS PROVIDED HEREIN ARE ACCEPTABLE FOR THIS PROJECT.

REVISIONS: 01 GENERAL UPDATES AND RENAMED TJR 02/19/16

ADVANCED DRAINAGE SYSTEMS, INC. ("ADS") HAS PREPARED THIS DETAIL BASED ON INFORMATION PROVIDED TO ADS. THIS DRAWING IS INTENDED TO DEPICT THE COMPONENTS AS REQUESTED. ADS HAS NOT PERFORMED ANY ENGINEERING OR DESIGN SERVICES FOR THIS PROJECT, NOR HAS ADS INDEPENDENTLY VERIFIED THE INFORMATION SUPPLIED. THE INSTALLATION DETAILS PROVIDED HEREIN ARE GENERAL RECOMMENDATIONS AND ARE NOT SPECIFIC TO THIS PROJECT. THE DESIGN ENGINEER SHALL REVIEW THESE DETAILS PRIOR TO CONSTRUCTION. IT IS THE ORIGINAL ENGINEER'S RESPONSIBILITY TO ENSURE THE DETAILS PROVIDED HEREIN MEET OR EXCEEDS THE APPLICABLE NATIONAL, STATE, OR LOCAL REQUIREMENTS AND TO ENSURE THAT THE DETAILS PROVIDED HEREIN ARE ACCEPTABLE FOR THIS PROJECT.

REVISIONS: 01 GENERAL UPDATES AND RENAMED TJR 02/19/16

ADVANCED DRAINAGE SYSTEMS, INC. ("ADS") HAS PREPARED THIS DETAIL BASED ON INFORMATION PROVIDED TO ADS. THIS DRAWING IS INTENDED TO DEPICT THE COMPONENTS AS REQUESTED. ADS HAS NOT PERFORMED ANY ENGINEERING OR DESIGN SERVICES FOR THIS PROJECT, NOR HAS ADS INDEPENDENTLY VERIFIED THE INFORMATION SUPPLIED. THE INSTALLATION DETAILS PROVIDED HEREIN ARE GENERAL RECOMMENDATIONS AND ARE NOT SPECIFIC TO THIS PROJECT. THE DESIGN ENGINEER SHALL REVIEW THESE DETAILS PRIOR TO CONSTRUCTION. IT IS THE ORIGINAL ENGINEER'S RESPONSIBILITY TO ENSURE THE DETAILS PROVIDED HEREIN MEET OR EXCEEDS THE APPLICABLE NATIONAL, STATE, OR LOCAL REQUIREMENTS AND TO ENSURE THAT THE DETAILS PROVIDED HEREIN ARE ACCEPTABLE FOR THIS PROJECT.

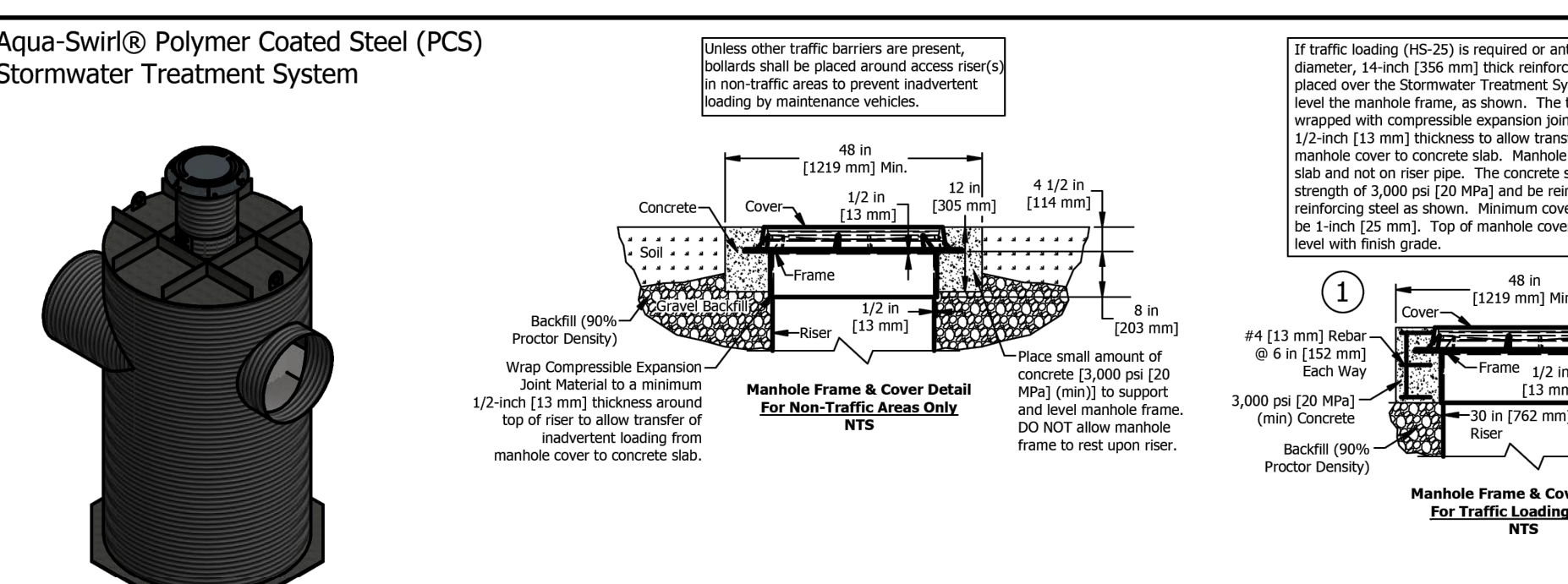
REVISIONS: 01 GENERAL UPDATES AND RENAMED TJR 02/19/16

NO.	DATE	DESCRIPTION
01	04/11/2023	ADDENDUM 1

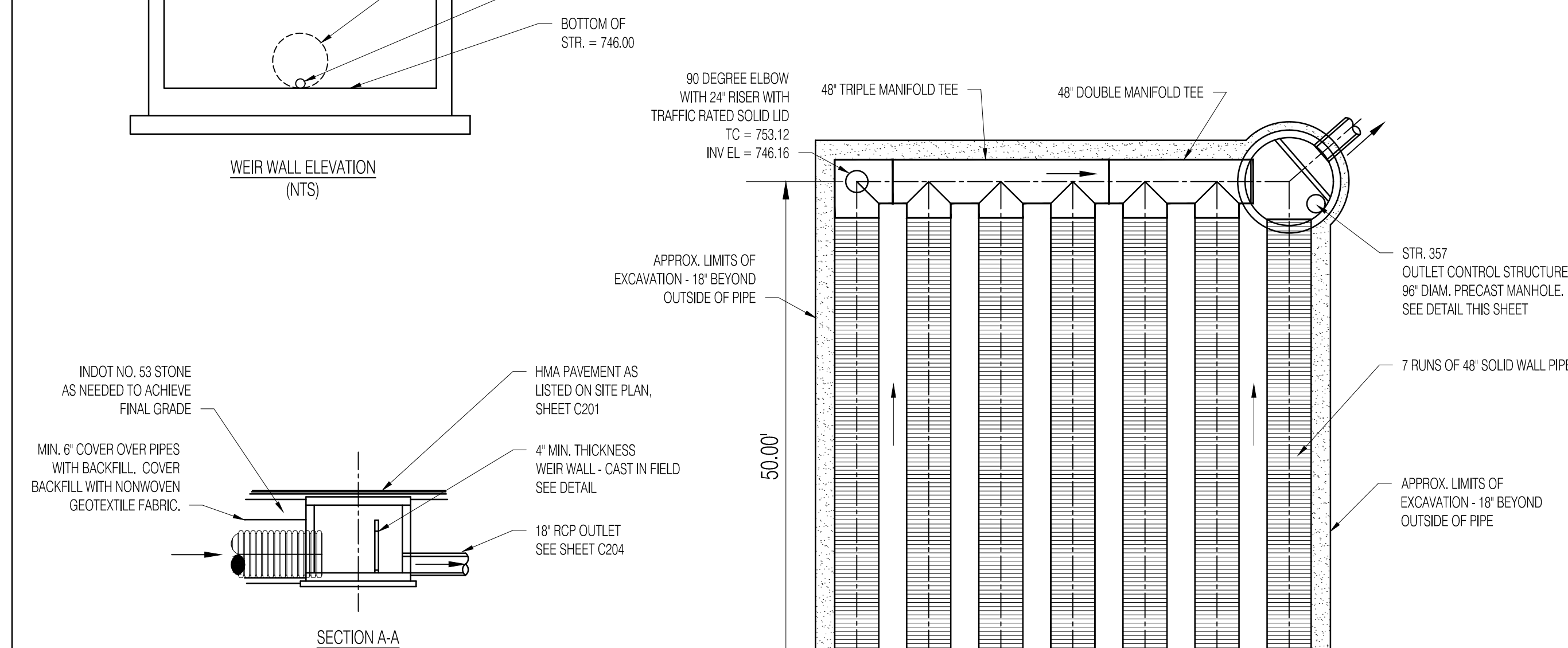
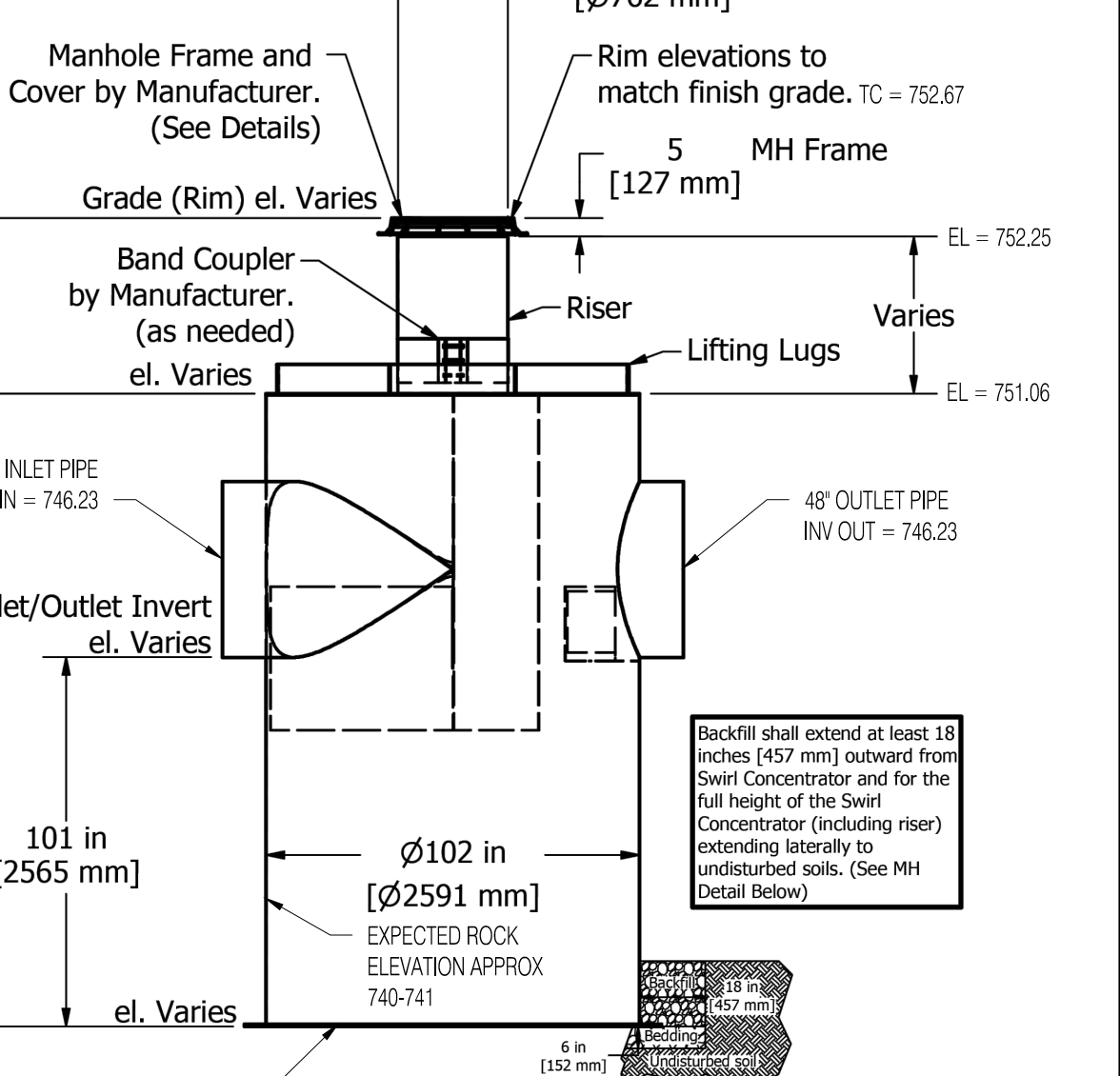
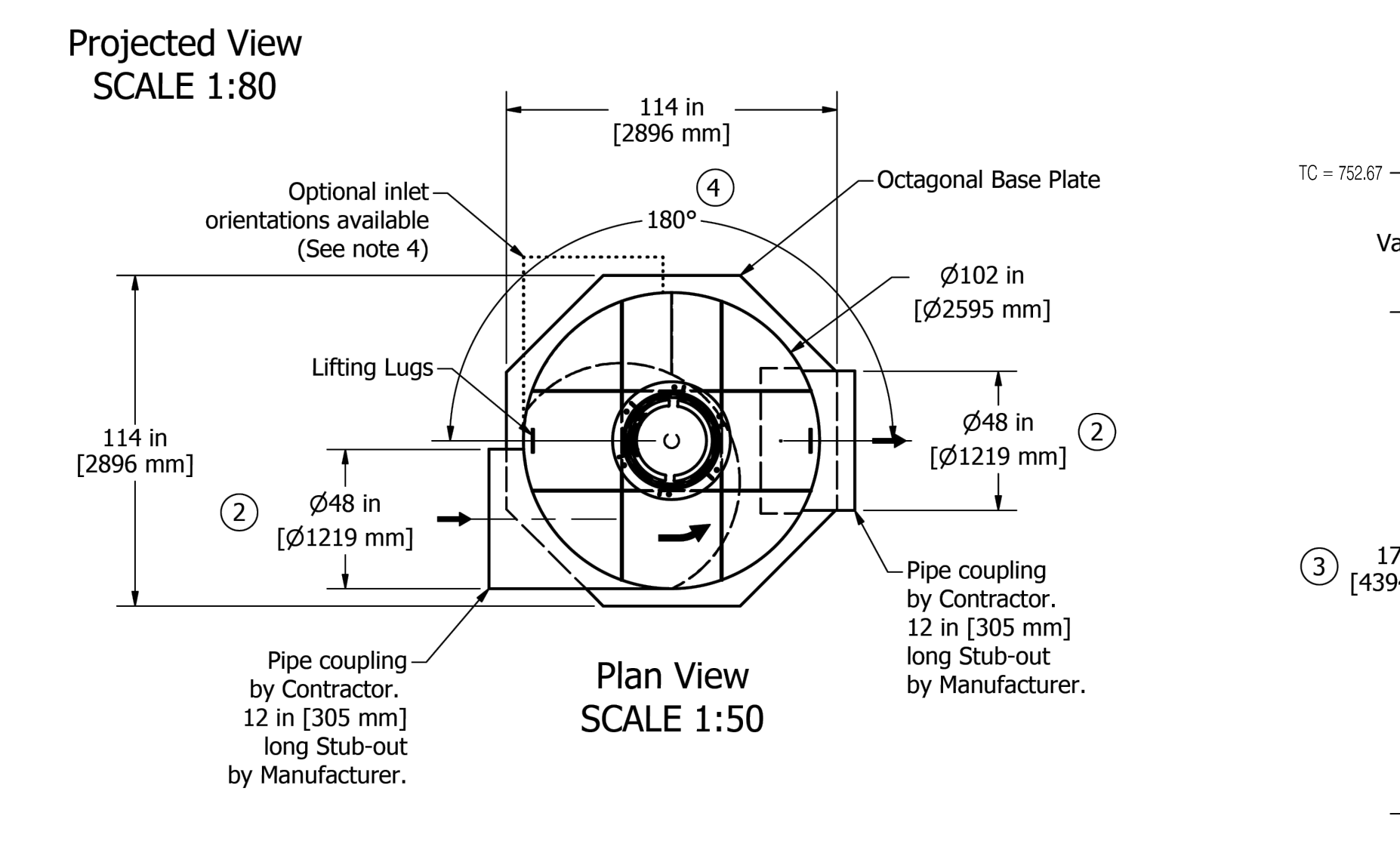
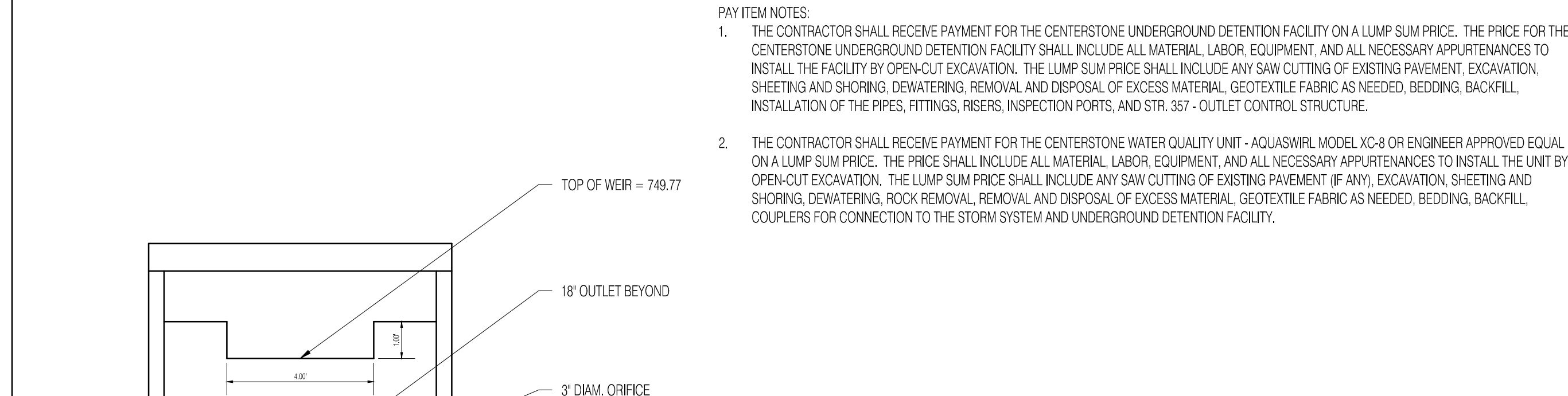
CITY OF BLOOMINGTON
Bloomington, IN 47403

shrewsberry
REASONABLE ENGINEERING ASSOCIATES, INC.

CERTIFIED BY
MATTHEW D. WALLACE
REGISTERED PROFESSIONAL ENGINEER
No. 10302418
STATE OF INDIANA



- Please see accompanied Aqua-Swirl® specification notes. See Site Plan for actual System orientation. Approximate dry (pick) weight: 5000 lbs [2300 kg].
- As an alternative, 42 in [1067 mm] diameter, HS-20/25 rated precast concrete rings may be substituted. 14 in [356 mm] thickness must be maintained.
 - XC-8 inlet/outlet pipe size ranges up to 48 in [1219 mm].
 - XC-8 chamber height may vary up to 173 in [4394 mm], depending on inlet/outlet pipe size.
 - Orientation may vary from a minimum of 90° to a maximum of 180°. Clockwise or counterclockwise orientation as needed.



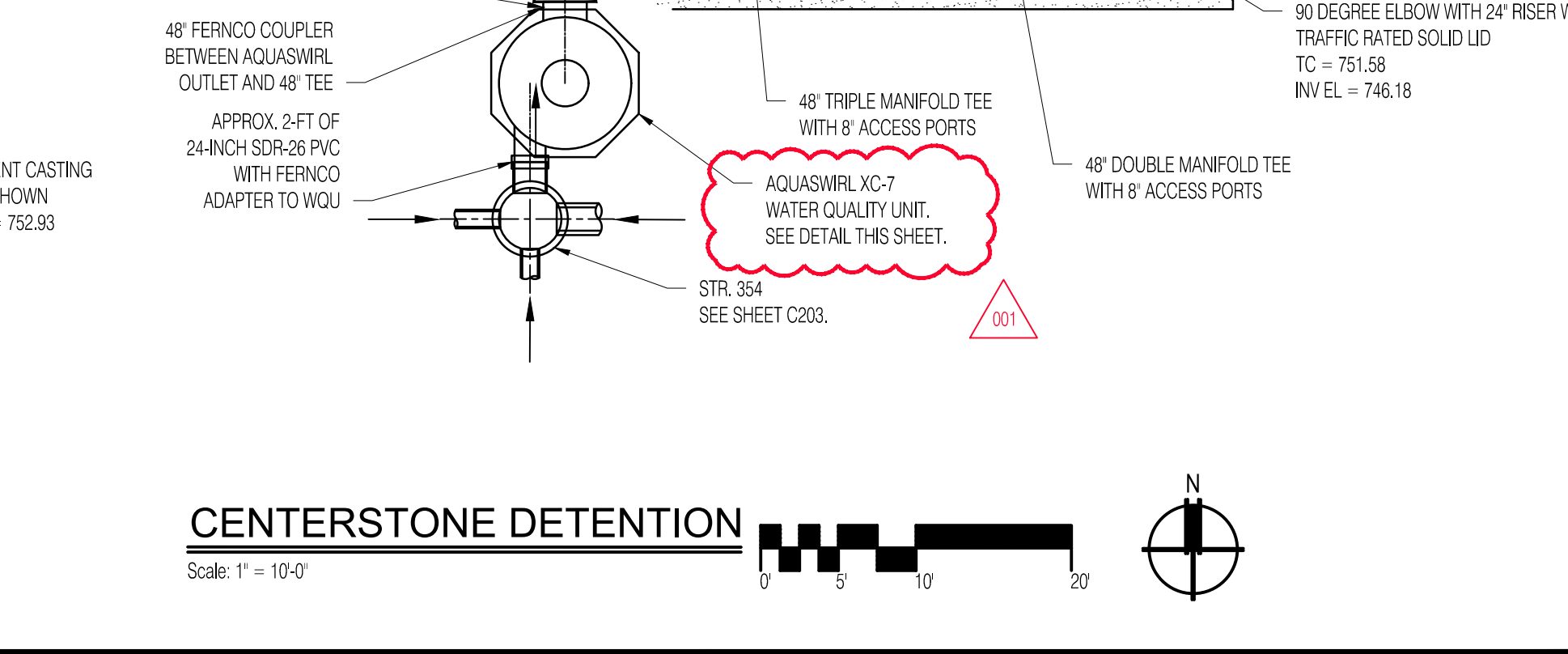
AquaShield
Aqua-Swirl® Xcelerator XC-8 CCW
Standard Detail

Structure #1: XC-8 STD
Drawn By: Ofiores
Scale: As Shown
Date: 2/25/2021
U.S. Patent No. 6,524,473 and other Patent Pending

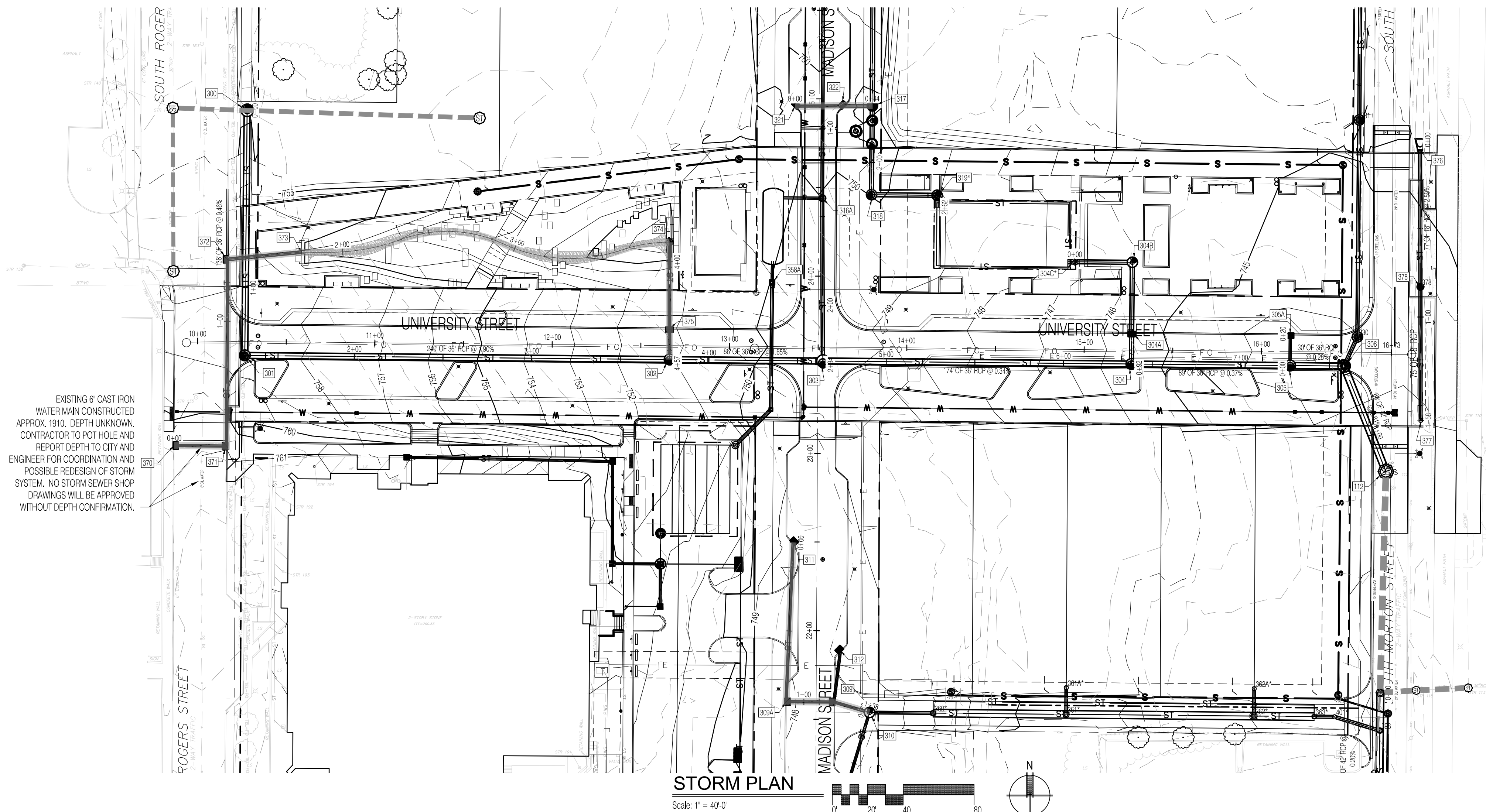
STR. 357 - OUTLET CONTROL STRUCTURE
STR. 354 - SEE SHEET C203.

HOPEWELL INFRASTRUCTURE & SITE ENGINEERING
PHASE 1 EAST - RE-BID
CITY OF BLOOMINGTON, INDIANA 47403

DATE: 03/15/2023
DRAWN BY: RDR
DRAWING STATUS: RE-BID
PROJECT NO.: 21-0049
CHECKED BY: MDW
SHEET TITLE: CENTERSTONE UNDERGROUND DETENTION SYSTEM DETAILS
SHEET NO.: C212

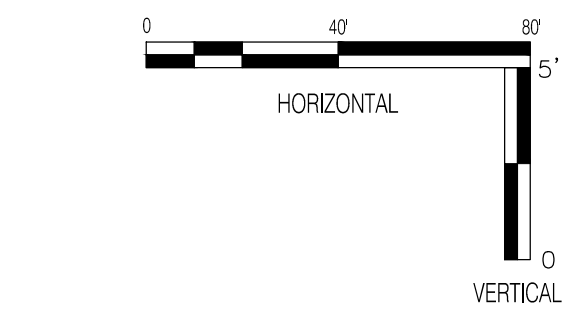


CENTERSTONE DETENTION
Scale: 1" = 10'-0"



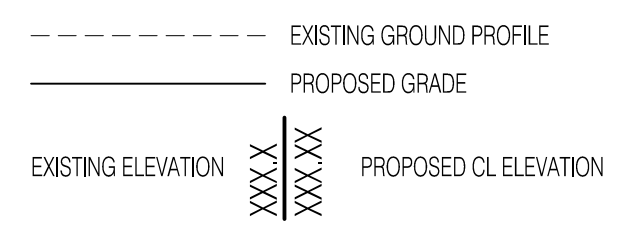
LEGEND:

- RIGHT OF WAY LINE (EXISTING RW)
- EASEMENT LINE
- CENTER LINE
- RIGHT OF WAY LINE (NEW RW)
- LOT LINE
- PARKING STRIPING
- P W S --- WATER MAIN
- ST --- STORM SEWER
- S --- SANITARY SEWER
- EX --- EXISTING
- INV --- INVERT ELEVATION
- MH --- MANHOLE
- RCP --- REINFORCED CONCRETE PIPE
- TC --- TOP OF CURB/TOP OF CASTING GRADE
- GRANULAR BACKFILL - SEE DETAIL SHEET C303



GENERAL NOTES

1. TEMPORARY TRAFFIC CONTROL DURING CONSTRUCTION TO CONFORM TO APPLICABLE LOCAL AND STATE STANDARDS.
2. ALL CONSTRUCTION ACTIVITY ON THIS SITE TO BE PERFORMED IN COMPLIANCE WITH APPLICABLE O.S.H.A. STANDARDS FOR WORKERS SAFETY.
3. IT SHALL BE THE CONTRACTORS RESPONSIBILITY TO FIELD VERIFY ALL UTILITY LOCATIONS BEFORE CONSTRUCTION BEGINS.
4. IT SHALL BE THE CONTRACTORS RESPONSIBILITY TO FIELD VERIFY ALL EXISTING ELEVATIONS BEFORE CONSTRUCTION BEGINS.
5. THE STORM SEWER SYSTEM SHALL BE CONSTRUCTED PER DESIGN SPECIFIED AND AS APPROVED THE CITY OF BLOOMINGTON ON THE FINAL APPROVED CONSTRUCTION PLANS. DEVIATIONS FROM THE APPROVED DESIGN SHALL ONLY BE PERMITTED DUE TO SPECIAL CIRCUMSTANCES OR DIFFICULTY DURING CONSTRUCTION AND WILL REQUIRE PRIOR FIELD APPROVAL FROM A DESIGNATED REPRESENTATIVE OF THE CITY OF BLOOMINGTON IN ADDITION TO SUPPLEMENTAL APPROVAL BY THE DESIGN ENGINEER. AN EXPLANATION OF ANY SUCH DEVIATION SHALL BE INCLUDED AS A REQUIREMENT ON AS-BUILT RECORD DRAWINGS SUBMITTED FOR RELEASE OF PERFORMANCE GUARANTEES. APPROVED DESIGN SLOPES IDENTIFIED AS GENERATING VELOCITIES OF 2.5 FPS OR LESS OR 10 FPS OR GREATER (AT FULL FLOW CAPACITY) SHALL REQUIRE AS-BUILT CERTIFICATION AT THE TIME OF CONSTRUCTION, PRIOR TO BACKFILLING THE PIPE. THE CONTRACTOR IS INSTRUCTED TO AS-BUILT EACH SECTION OF STORM PIPE AS IT IS BEING INSTALLED TO ENSURE COMPLIANCE WITH THE DESIGN PLANS AND AS APPROVED BY THE CITY OF BLOOMINGTON.
6. NO EARTH DISTURBING ACTIVITY MAY COMMENCE WITHOUT AN APPROVED STORM WATER MANAGEMENT PERMIT.
7. ALL STORM WATER DRAINAGE CASTINGS SHALL BE LABELED WITH ENVIRONMENTAL MESSAGING "DUMP NO WASTE".
8. ALL CONCRETE PIPE JOINTS SHALL BE CONTINUOUS O-RING GASKET CONFORMING TO ASTM C 443.



REVISIONS

NO.	DATE	DESCRIPTION
1	04/11/2023	ADDENDUM 1

CLIENT:

Bloomington, IN 47403

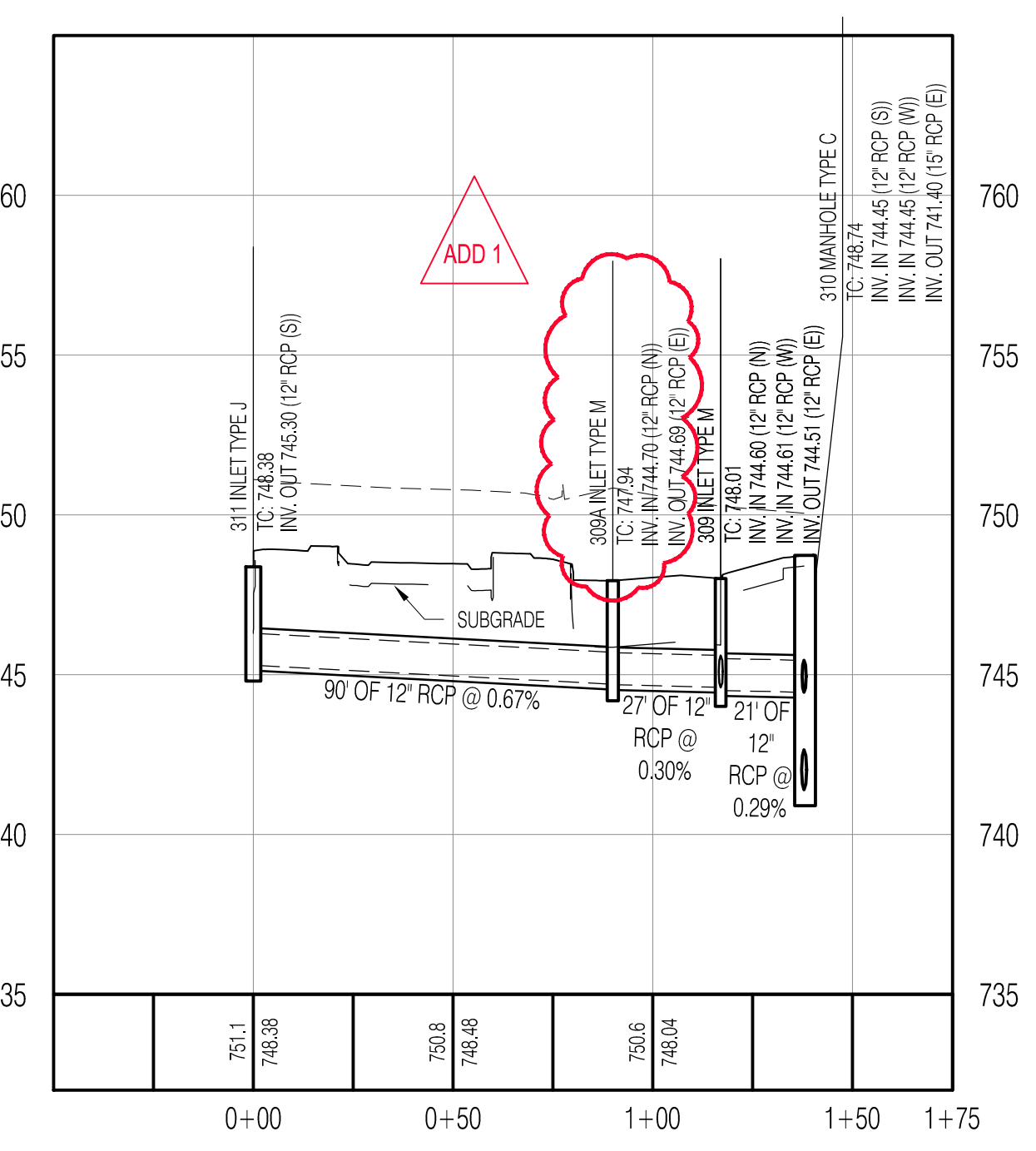
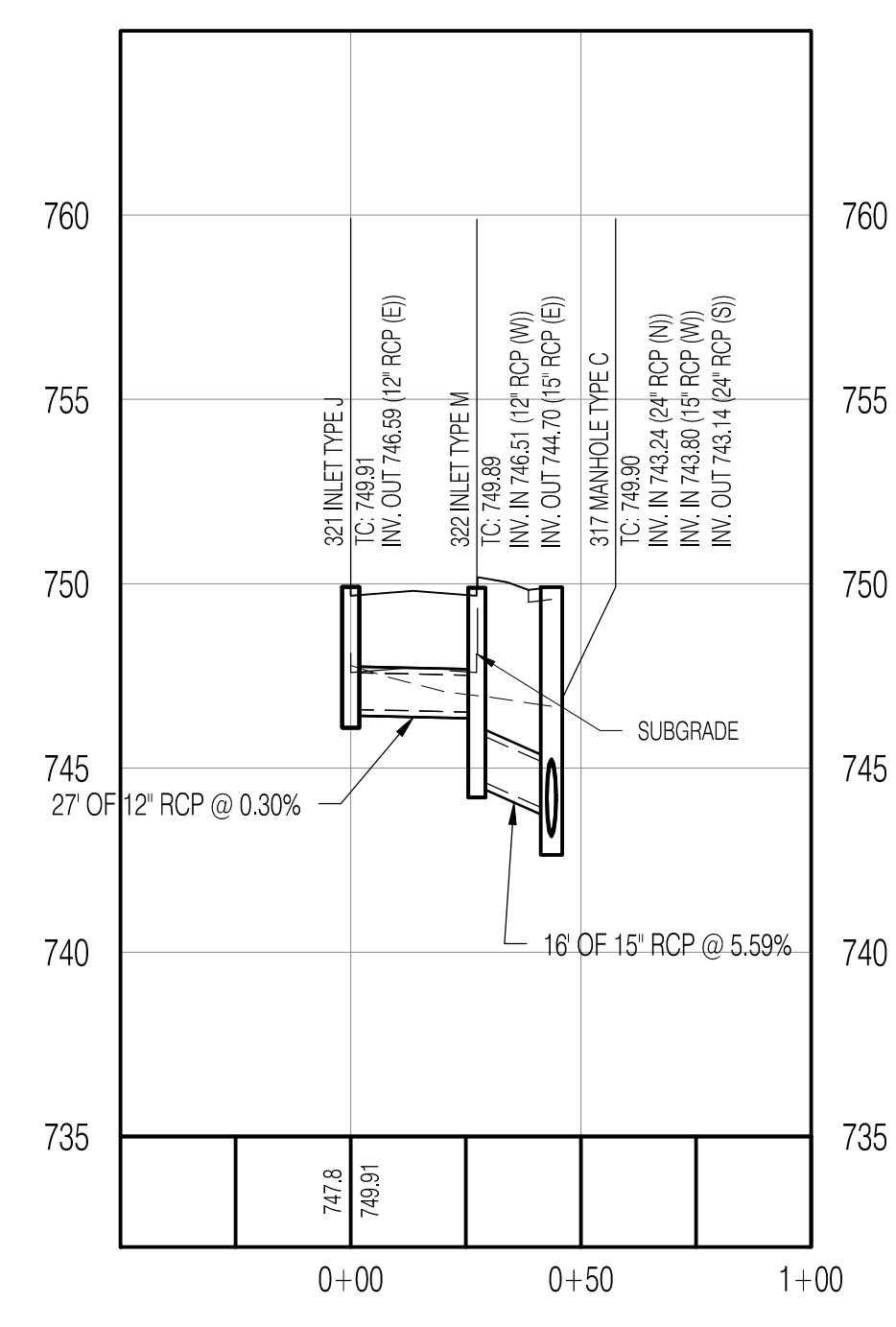
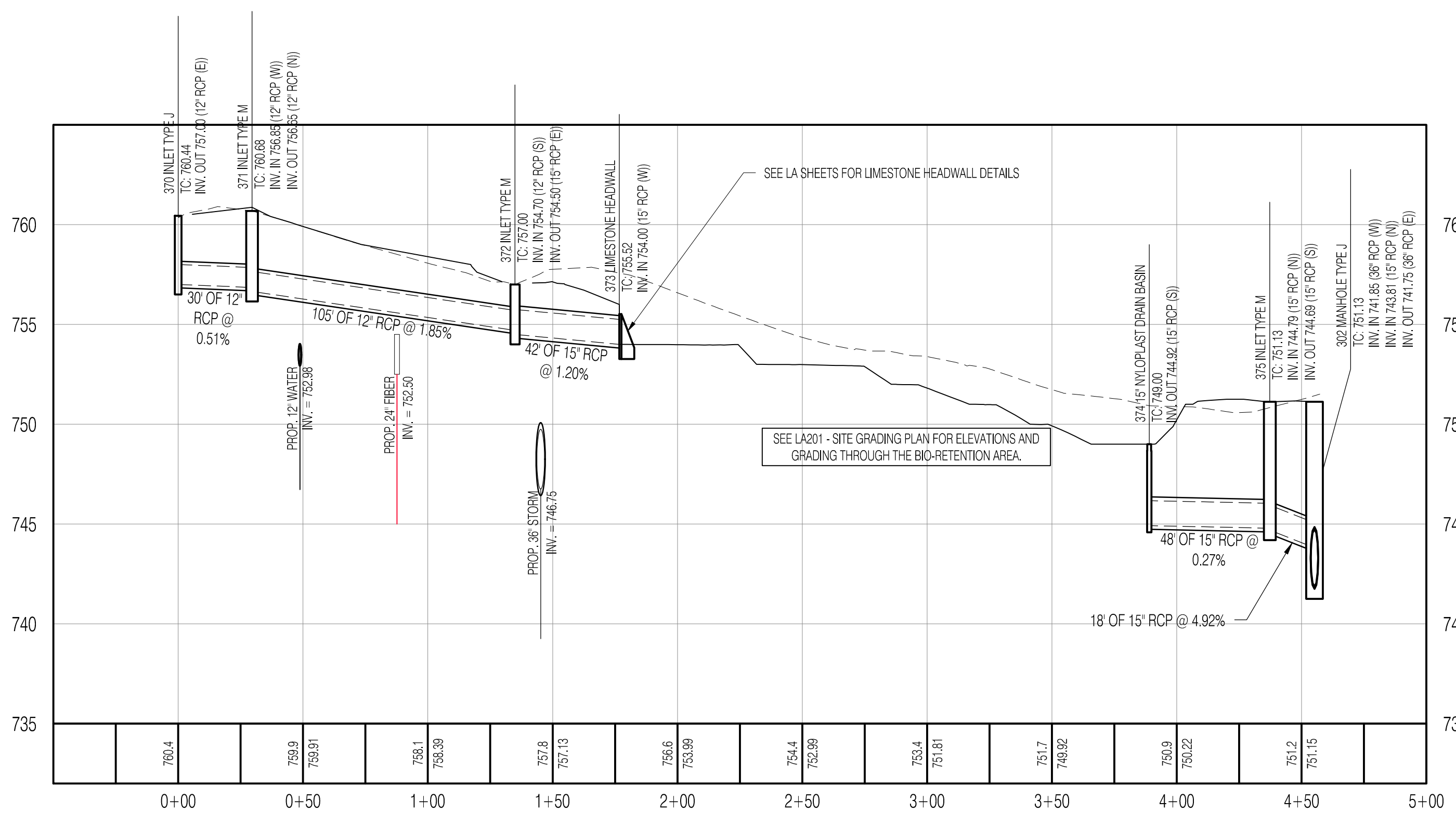
DESIGN TEAM

shrewsberry REA
ARCHITECTURAL
CIVIL ENGINEERING
PLANNING
LAND SURVEYING

CERTIFIED BY:

Matthew D. Wallace
REGISTERED PROFESSIONAL ENGINEER
No. 10302418
STATE OF INDIANA

© COPYRIGHTED BY SHREWSBERRY AND ASSOCIATES

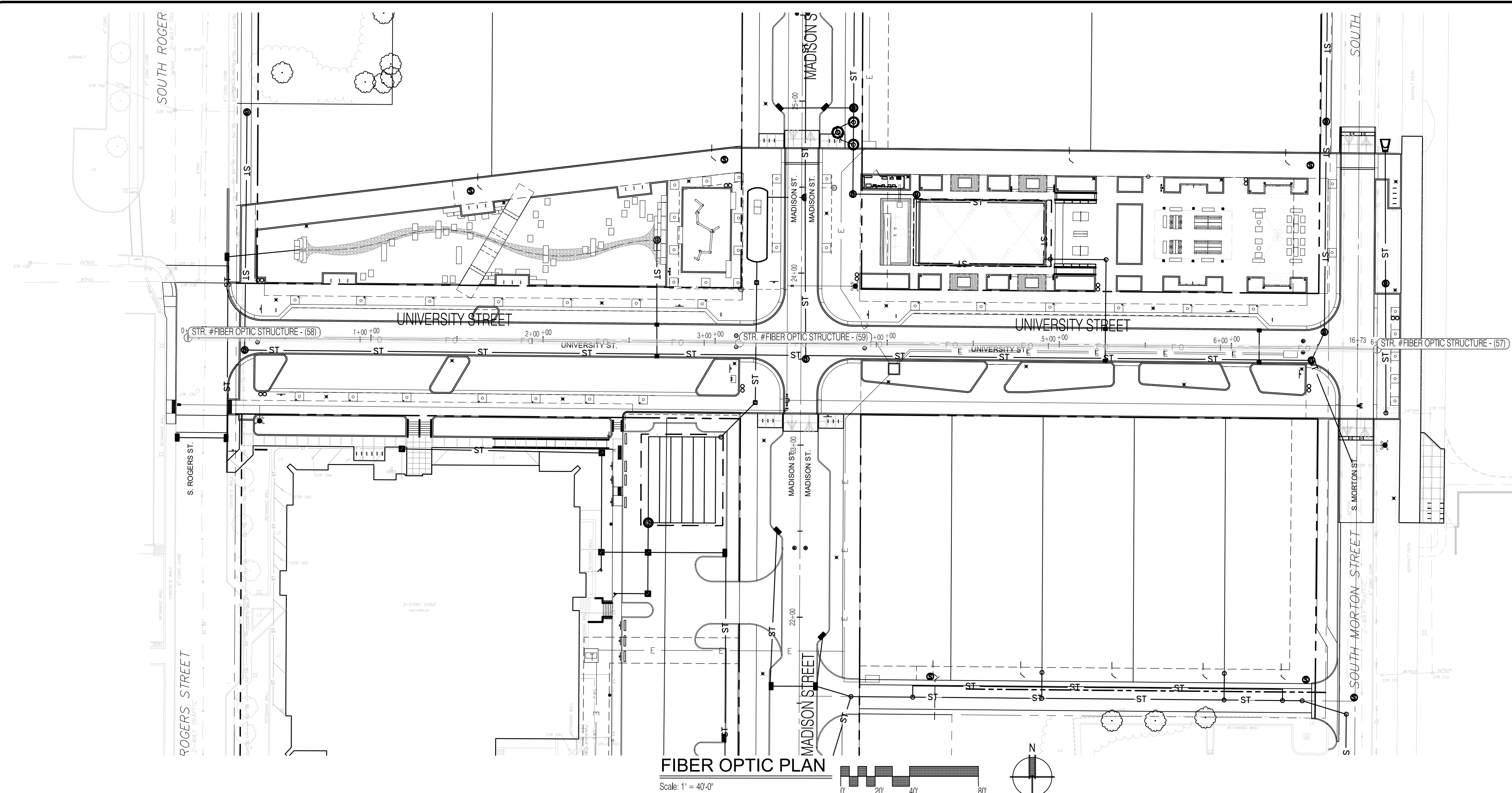


HOPEWELL INFRASTRUCTURE & SITE ENGINEERING
PHASE 1 EAST - RE-BID
CITY OF BLOOMINGTON, INDIANA 47403

DATE: 03/15/2023 PROJECT NO: 21-0049
DRAWN BY: RDR CHECKED BY: MDW
DRAWING STATUS: RE-BID
SHEET TITLE: STORM SEWER PLAN & PROFILE
SHEET NO: C301

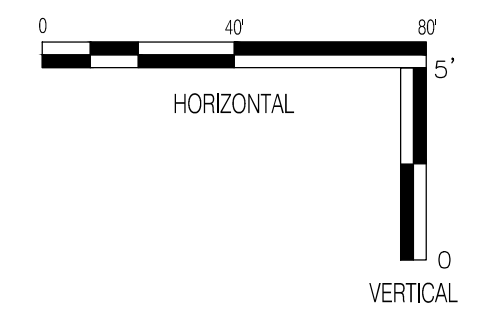


C:\Projects\2023\21-0049\Drawings\Sheet\StormSewerPlan.dwg



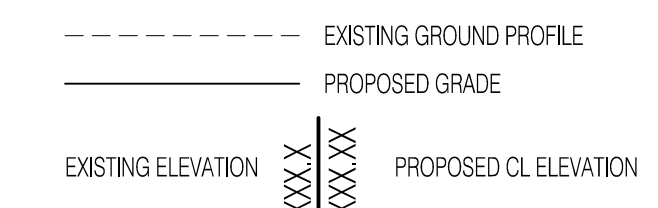
LEGEND:

- RIGHT OF WAY LINE (EXISTING RW)
- - - EASEMENT LINE
- - - CENTER LINE
- - - RIGHT OF WAY LINE (NEW RW)
- - - LOT LINE
- - - PARKING STRIPING
- - - WATER MAIN
- - - STORM SEWER
- - - SANITARY SEWER
- - - FIBER OPTIC
- EX EXISTING
- IN INVERT ELEVATION
- MH MANHOLE
- RCF REINFORCED CONCRETE PIPE
- TC TOP OF CURB/TOP OF CASTING GRADE
- ▨ GRANULAR BACKFILL - SEE DETAIL SHEET C603



GENERAL NOTES

1. TEMPORARY TRAFFIC CONTROL DURING CONSTRUCTION TO CONFORM TO APPLICABLE LOCAL AND STATE STANDARDS.
2. ALL CONSTRUCTION ACTIVITY ON THIS SITE TO BE PERFORMED IN COMPLIANCE WITH APPLICABLE O.S.H.A. STANDARDS FOR WORKERS SAFETY.
3. IT SHALL BE THE CONTRACTORS RESPONSIBILITY TO FIELD VERIFY ALL UTILITY LOCATIONS BEFORE CONSTRUCTION BEGINS.
4. IT SHALL BE THE CONTRACTORS RESPONSIBILITY TO FIELD VERIFY ALL EXISTING ELEVATIONS BEFORE CONSTRUCTION BEGINS.
5. NO EARTH DISTURBING ACTIVITY MAY COMMENCE WITHOUT AN APPROVED STORM WATER MANAGEMENT PERMIT.
6. WORK ON THIS SHEET IS INCLUDED IN THE FOLLOWING PAY ITEMS:
 FIBER OPTIC CONDUIT - INCLUDES ALL WORK REQUIRED TO CONSTRUCT FIBER OPTIC TRENCH PER THE DETAIL BELOW. ALL EXCAVATION, BACKFILL, AND RELATED WORK SHALL BE INCLUDED IN THE COST. THIS WORK WILL BE MEASURED FOR PAYMENT BY LINEAR FOOT AND SHALL BE PAID FOR AT THE CONTRACT UNIT PRICE PER LINEAR FOOT.
 FIBER OPTIC JUNCTION BOX - INCLUDES ALL WORK REQUIRED TO INSTALL FIBER OPTIC JUNCTION BOXES SHOWN ON THE PLANS. ALL EXCAVATION, BACKFILL, AND RELATED WORK SHALL BE INCLUDED IN THE COST. THIS WORK WILL BE MEASURED FOR PAYMENT BY EACH AND SHALL BE PAID FOR AT THE CONTRACT UNIT PRICE PER EACH.
7. THE CONTRACTOR SHALL COORDINATE WORK WITH THE CITY PRIOR TO INSTALLATION OF FIBER OPTIC CONDUIT.

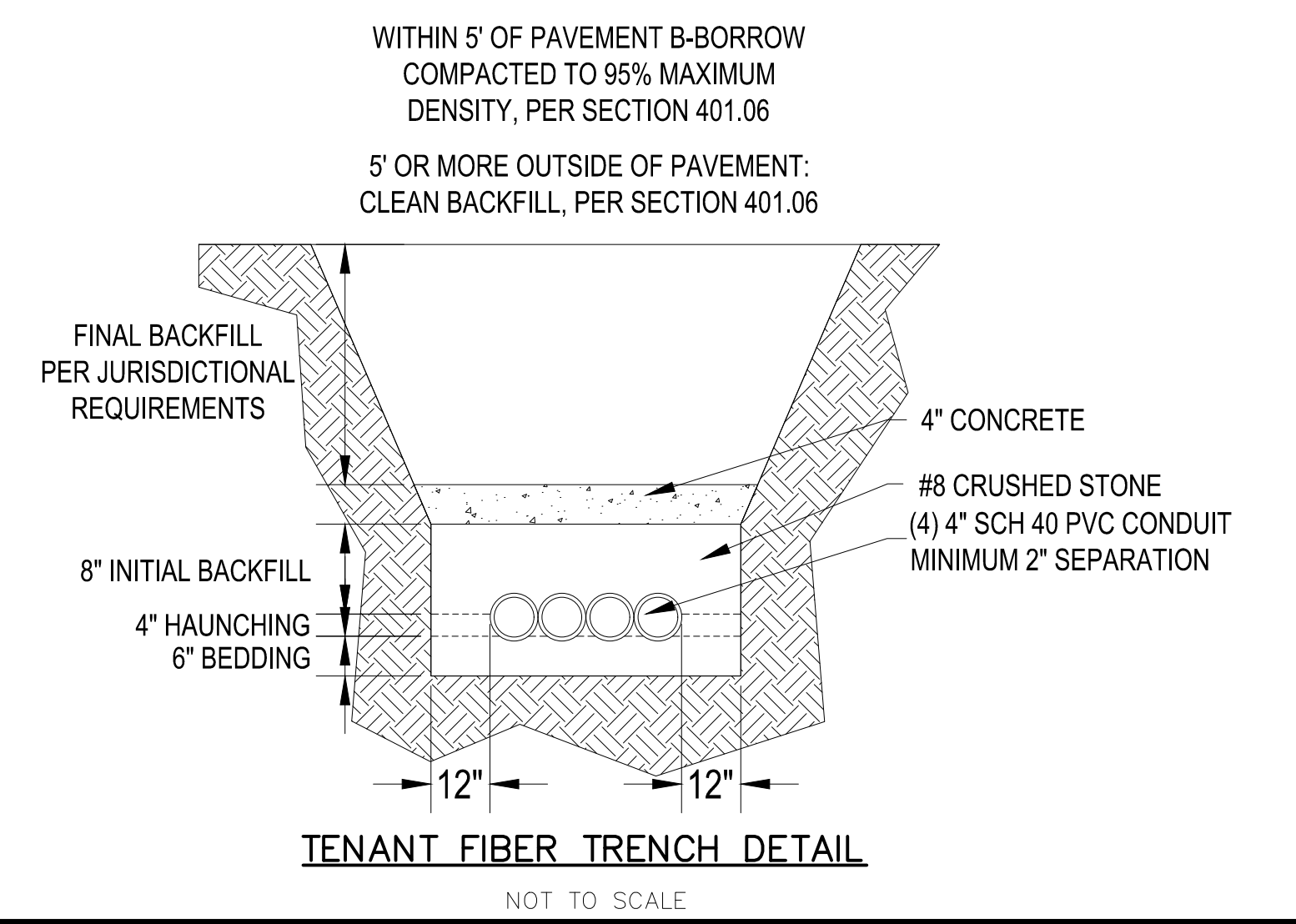
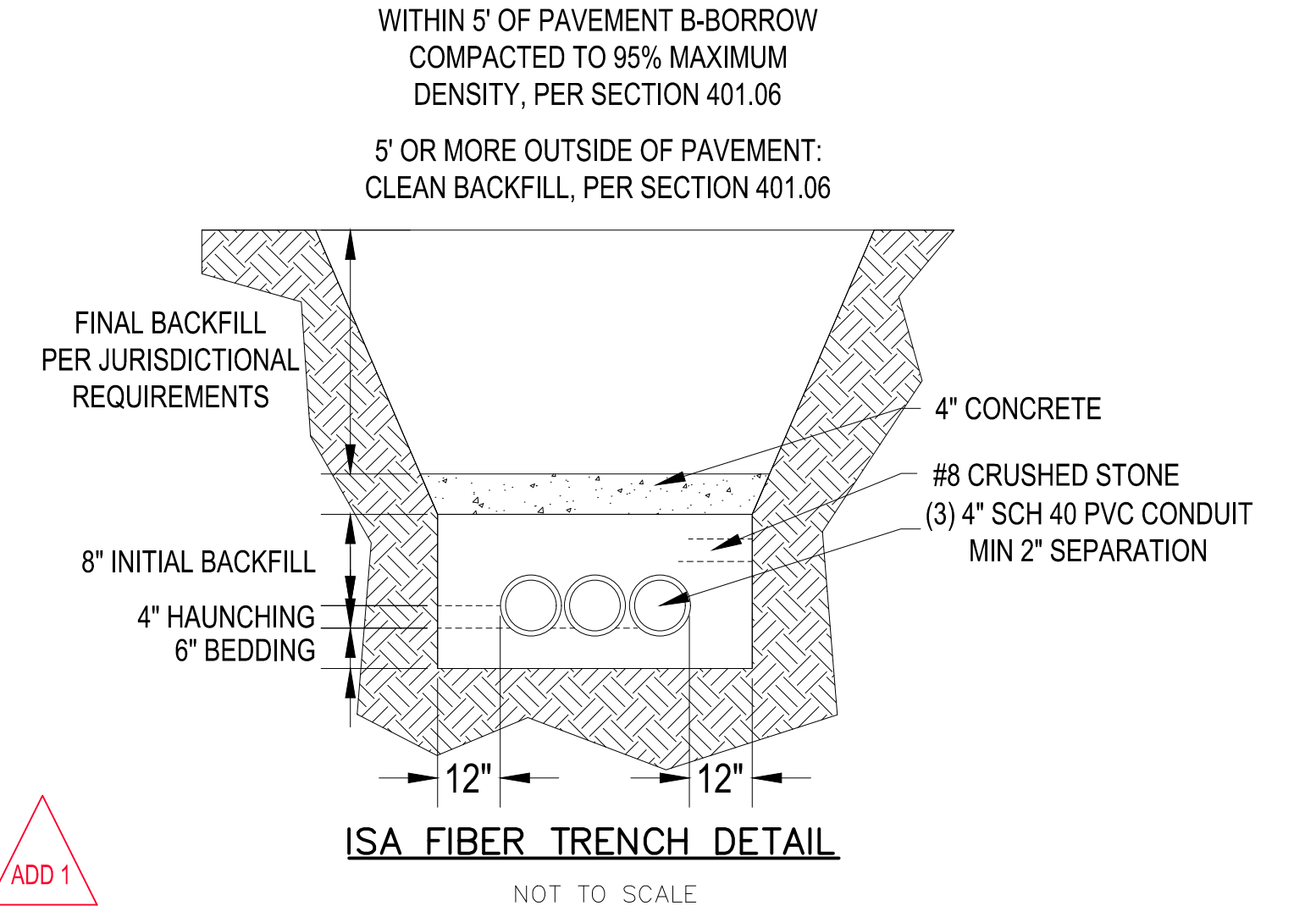
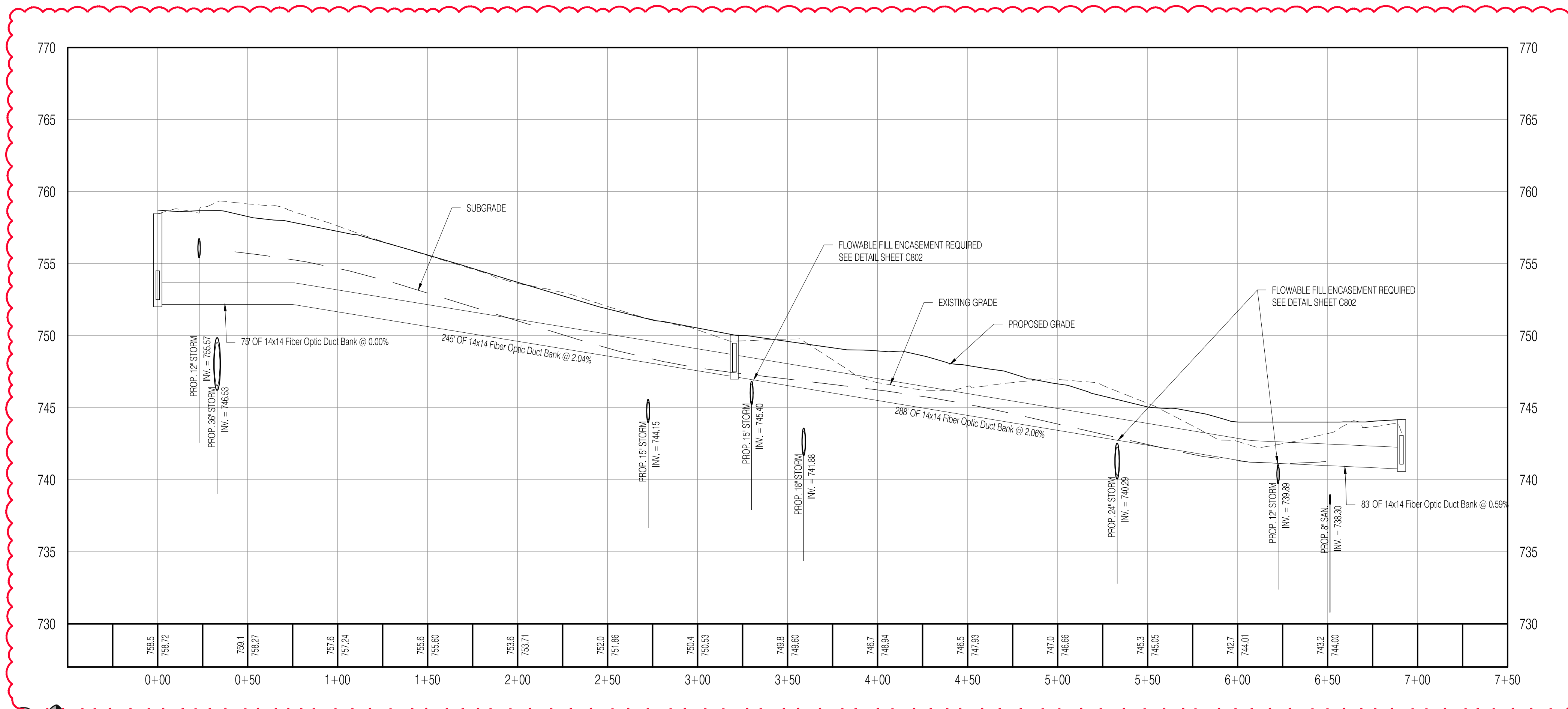


REVISIONS	
NO.	DATE DESCRIPTION
1	04/11/2023 ADDENDUM 1

CLIENT:
CITY OF BLOOMINGTON
 Bloomington, IN 47403

DESIGN TEAM:
shrewsberry REA
 ARCHITECTURAL CIVIL ENGINEERING PLANNING LAND SURVEYING
 BEA
 BRYAN PATTO & ASSOCIATES, INC.
 528 North Walnut Street
 Bloomington, Indiana 47404 (317) 332-8030

CERTIFIED BY:
MATTHEW D. WALLACE
 REGISTERED PROFESSIONAL ENGINEER
 No. 10302418
 STATE OF INDIANA
 Copyrighted by SHREWSBERRY AND ASSOCIATES

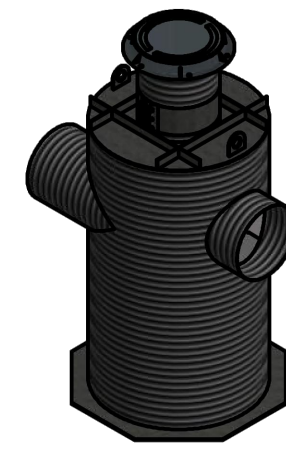


HOPEWELL INFRASTRUCTURE & SITE ENGINEERING
 PHASE 1 EAST - RE-BID
 CITY OF BLOOMINGTON, INDIANA 47403

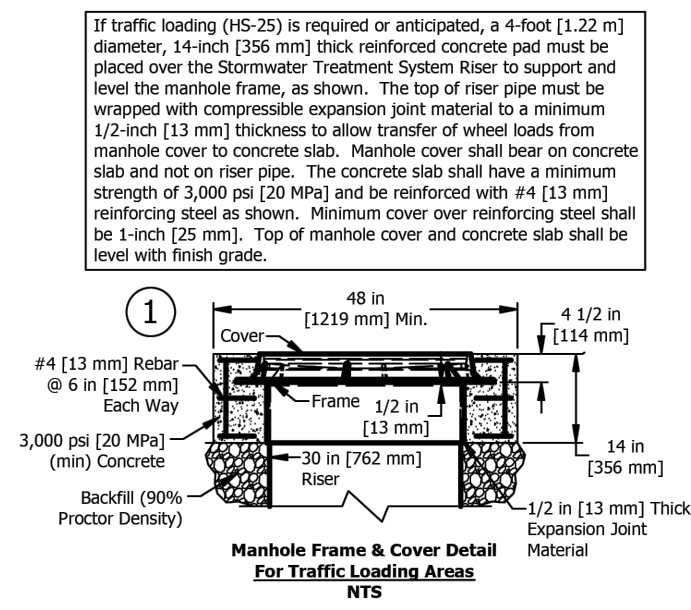
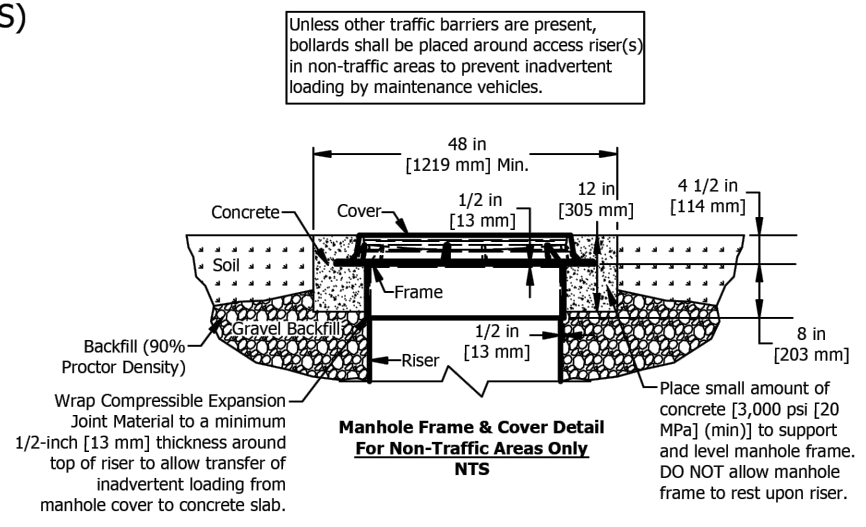
DATE: 03/15/2023	PROJECT NO.: 21-0049
DRAWN BY: RDR	CHECKED BY: MDW
DRAWING STATUS: RE-BID	
SHEET TITLE: FIBER OPTIC PLAN & PROFILE	
SHEET NO.: C601	



Aqua-Swirl® Polymer Coated Steel (PCS) Stormwater Treatment System

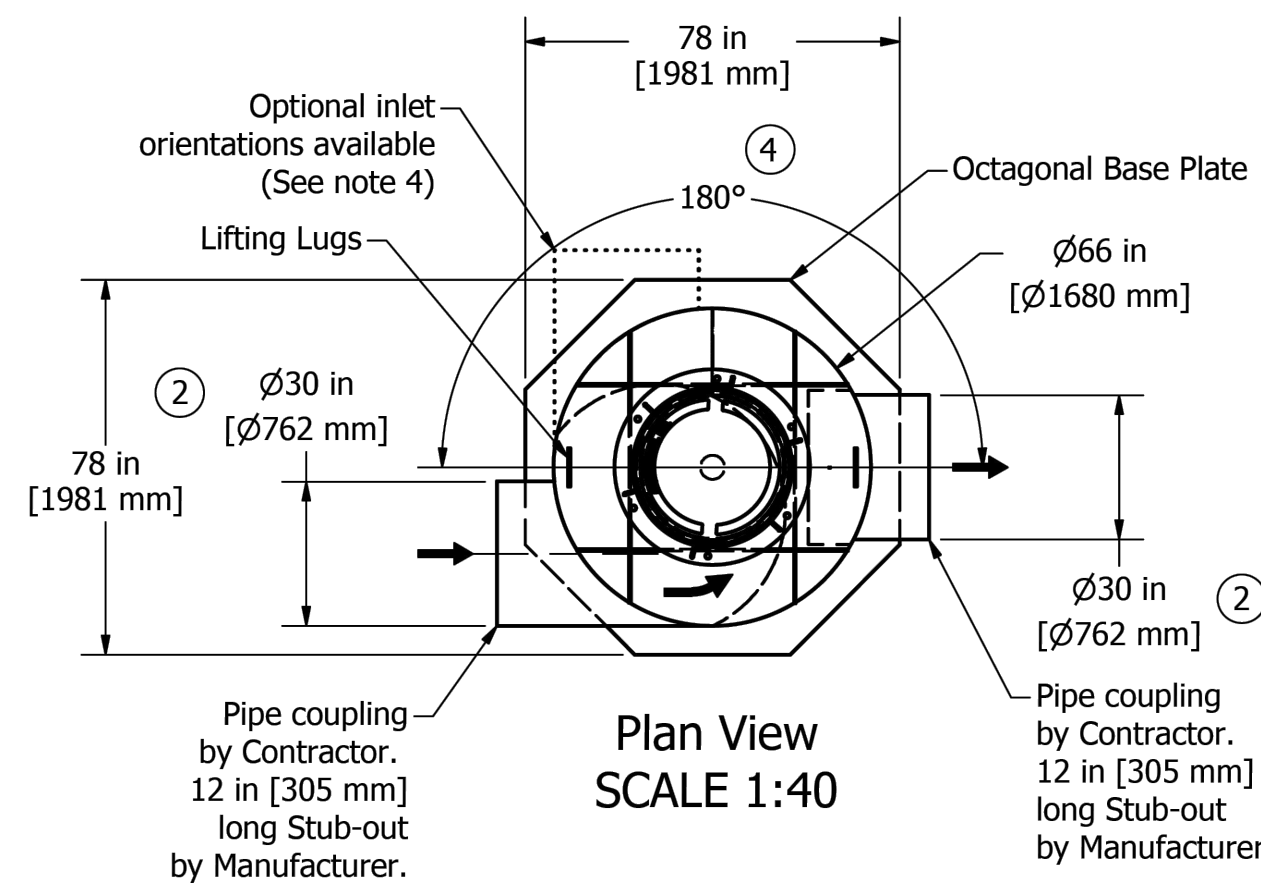


Projected View
SCALE 1:70

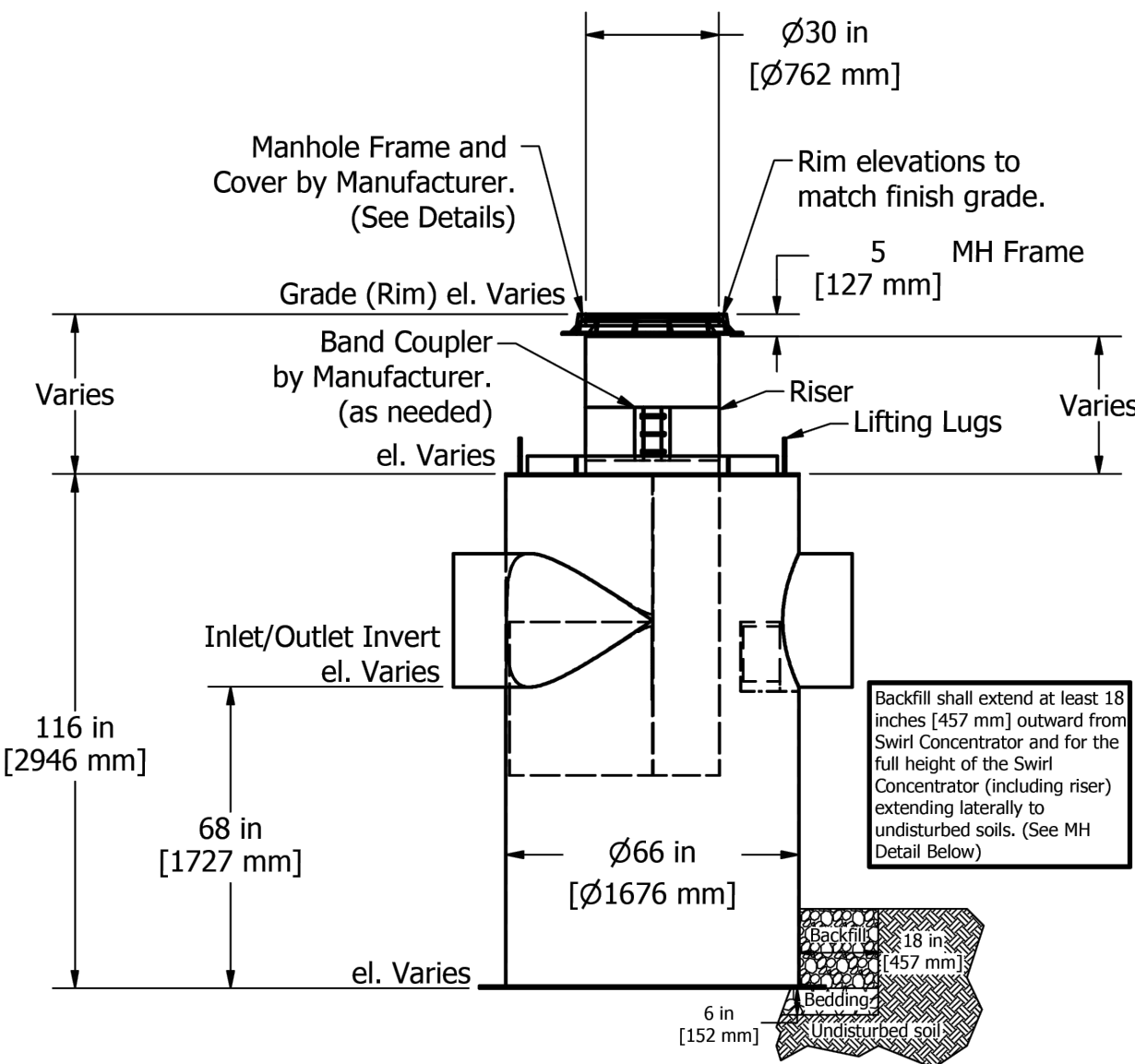


Please see accompanied Aqua-Swirl® specification notes. See Site Plan for actual system orientation. Approximate dry (pick) weight: 2200 lbs [1000 kg].

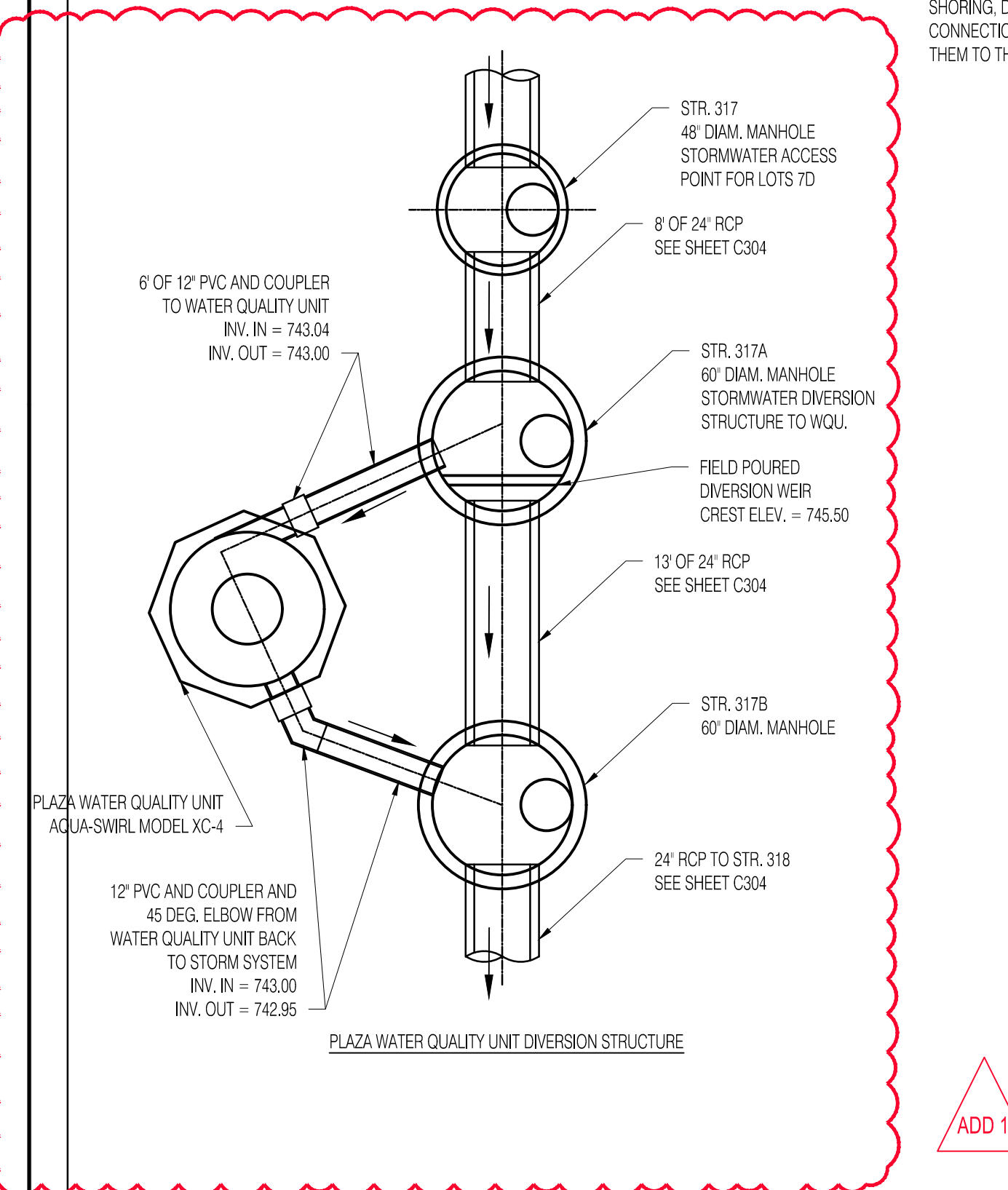
- ① As an alternative, 42 in [1067 mm] diameter, HS-20/25 rated precast concrete rings may be substituted. 14 in [356 mm] thickness must be maintained.
- ② XC-5 inlet/outlet pipe size ranges up to 30 in [762 mm]
- ③ XC-5 chamber height may vary up to 116 in [2946 mm], depending on inlet/outlet pipe size.
- ④ Orientation may vary from a minimum of 90° to a maximum of 180°. Clockwise or counterclockwise orientation as needed.



Plan View
SCALE 1:40

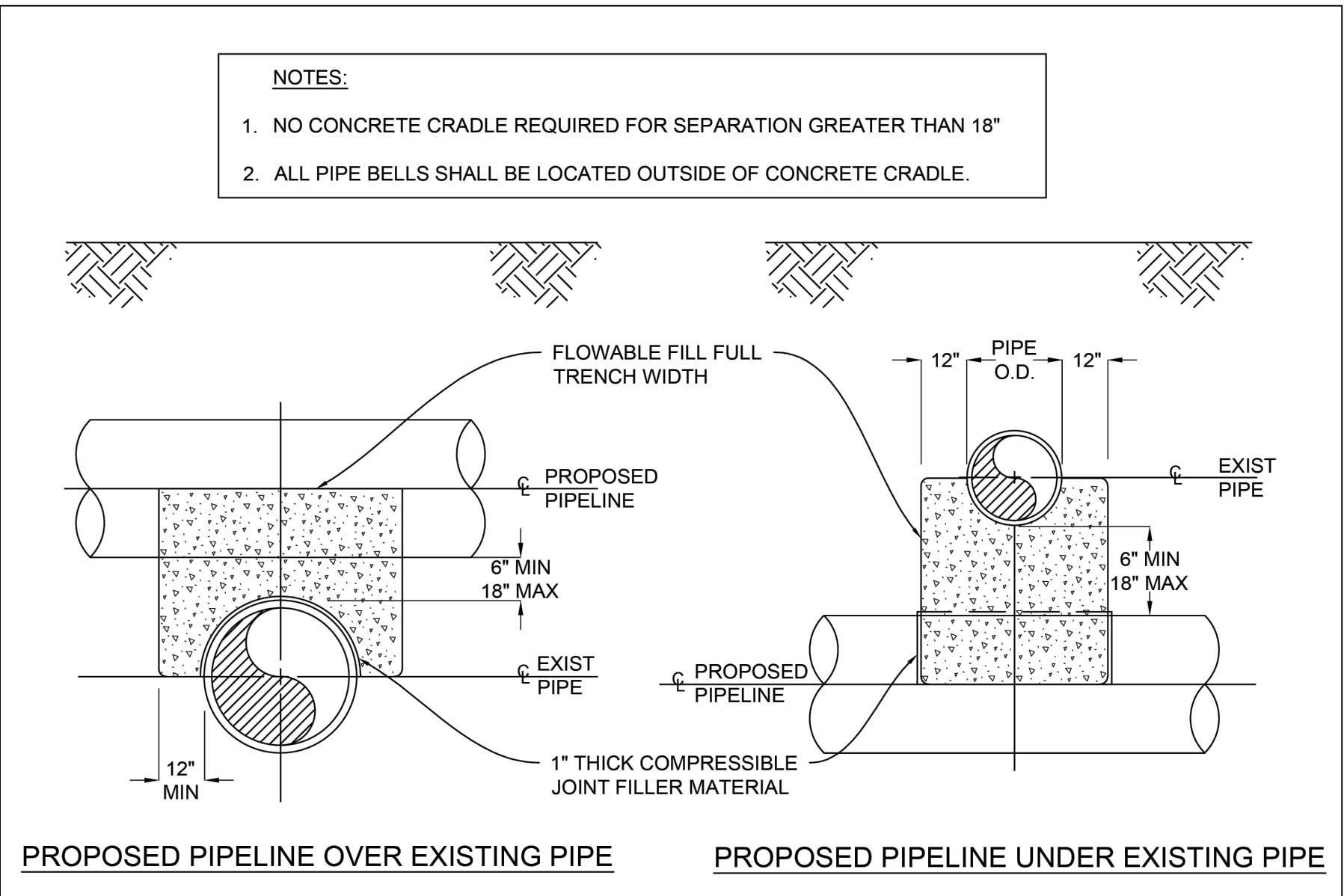
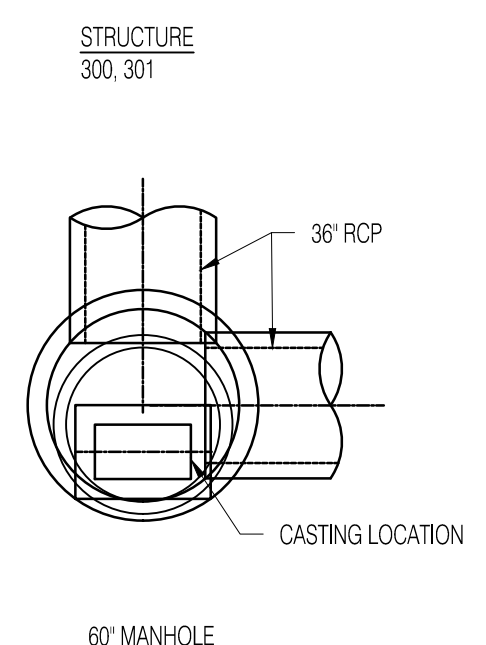
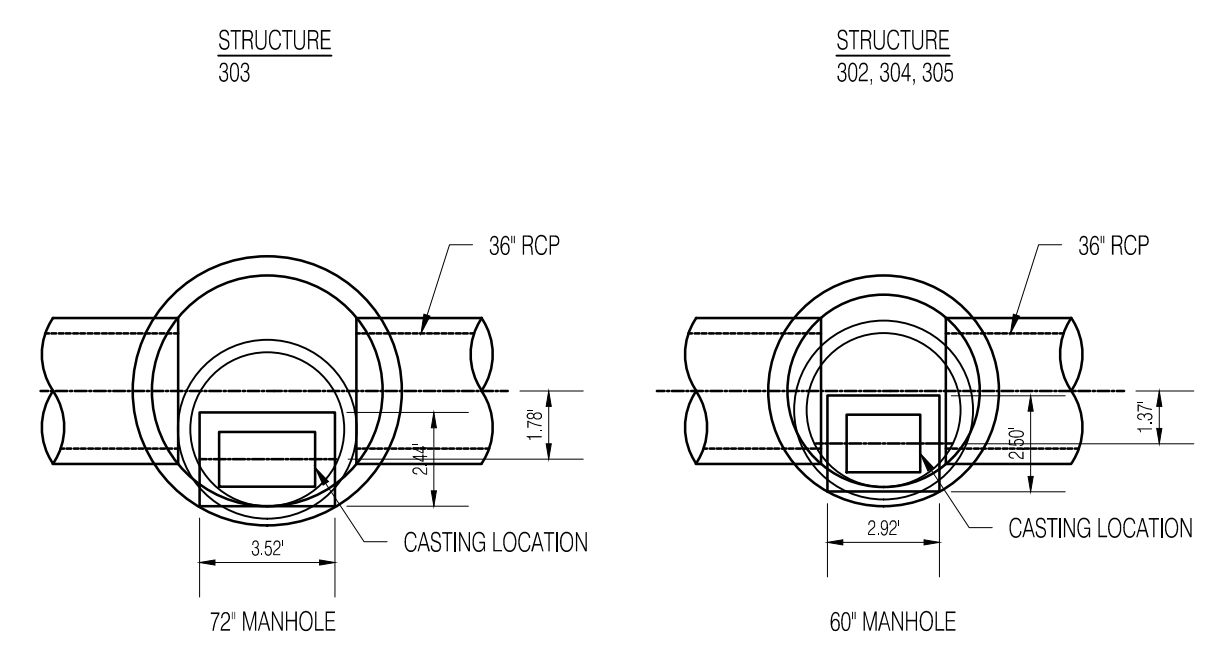


Elevation View
SCALE 1:40



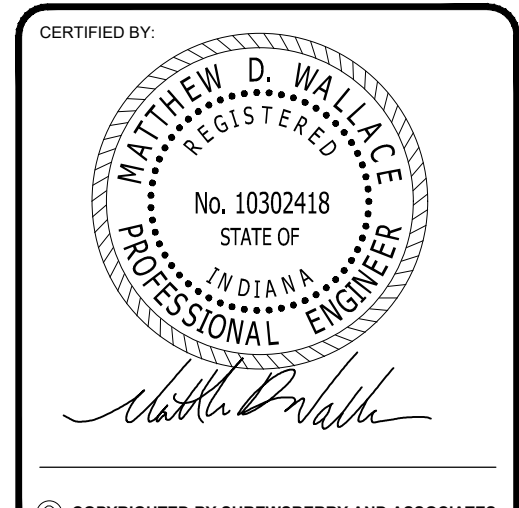
PAY ITEM NOTES:
1. 2. THE CONTRACTOR SHALL RECEIVE PAYMENT FOR THE PLAZA WATER QUALITY UNIT - AQUASWIRL MODEL XC-4 OR ENGINEER APPROVED EQUAL ON A LUMP SUM PRICE. THE LUMP SUM PRICE SHALL INCLUDE ALL MATERIAL, LABOR, EQUIPMENT, AND ALL NECESSARY APPURTENANCES TO INSTALL THE FACILITY BY OPEN-CUT EXCAVATION. THE LUMP SUM PRICE SHALL INCLUDE ANY SAW CUTTING OF EXISTING PAVEMENT, EXCAVATION, SHEETING AND SHORING, DEWATERING, REMOVAL AND DISPOSAL OF EXCESS MATERIAL, GEOTEXTILE FABRIC AS NEEDED, BEDDING, BACKFILL, COUPLERS FOR CONNECTION TO THE STORM SYSTEM AND UNDERGROUND DETENTION FACILITY. STRUCTURES 317A, AND 317B ALONG WITH THE PIPES THAT CONNECT THEM TO THE INCOMING AND OUTGOING STORM SEWER SYSTEM ARE TO BE INCLUDED IN THE WATER QUALITY UNIT LUMP SUM PRICE.

<p>2733 Kanawha Drive, Suite 111, Chattanooga, TN 37445 Phone (888) 344-9084 Fax (423) 826-2112 www.aquashieldinc.com</p>	<p>Aqua-Swirl® XAccelerator XC-5 CCW</p>	<p>Structure #: XC-5 STD Drawn By: OF/ares Scale: As Shown Date: 2/25/2021 U.S. Patent No. 6524473 and other Patent Pending</p>	<p>Rvwed: [] Rvw. Date: []</p>
	<p>Standard Detail</p>		



- NOTES:**
1. NO CONCRETE CRADLE REQUIRED FOR SEPARATION GREATER THAN 18"
 2. ALL PIPE BELLS SHALL BE LOCATED OUTSIDE OF CONCRETE CRADLE.

NO.	DATE	DESCRIPTION
1	04/11/2023	ADDENDUM 1



HOPEWELL INFRASTRUCTURE & SITE ENGINEERING
PHASE 1 EAST - RE-BID
 CITY OF BLOOMINGTON, INDIANA 47403

DATE: 03/15/2023	PROJECT NO.: 21-0049
DRAWN BY: RDR	CHECKED BY: MDW
DRAWING STATUS: RE-BID	
SHEET TITLE: DRAINAGE DETAILS	
SHEET NO.: C802	