

CBU IS YOUR WATER SOURCE

City of Bloomington Utilities (CBU) is responsible for:

- treatment and distribution of water
- collection and treatment of wastewater
- channeling of stormwater storage tanks

Water CBU treats from Lake Monroe serves all of Monroe County and parts of Brown County (about 120,000 people) through CBU infrastructure, IU, and 9 wholesale customers. The sewer utility serves approximately 20,300 customers with an average daily flow of about 16 million gallons per day through more than 320 miles of pipe, and 39 lift stations

CONNECTING SERVICE

To sign up for water and/or sewer service, follow this QR code for our sign-up tutorial



PAYING YOUR BILL

There are multiple ways to pay your bill, including electronic options. Scan the QR code below to:



- Create an online account through which you can pay your bill with a credit or debit card
- Sign up for Aquapay, a service that allows you to have your monthly bill automatically deducted from a checking or savings account
- View mail, phone, and in-person options

SEE YOUR WATER USAGE AND SET LEAK ALERTS



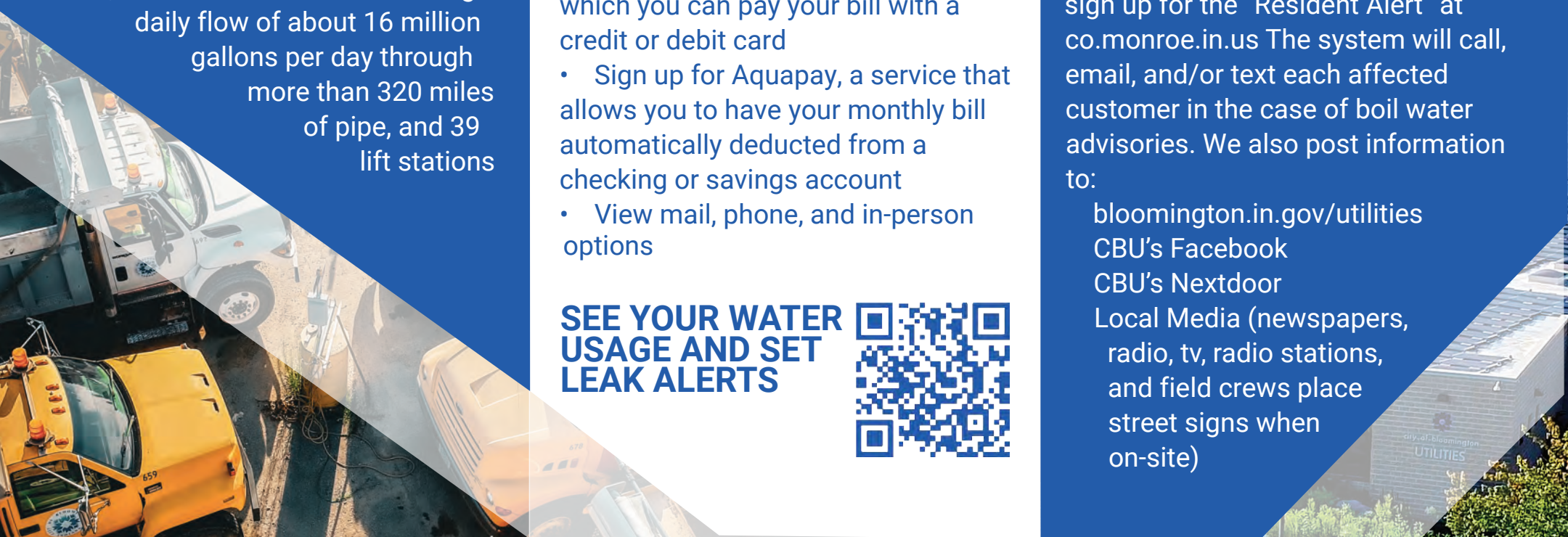
PAYING FOR SANITATION SERVICE

The Sanitation service fee for your trash will be included in your monthly bill. Cost depends on the size of the cart you choose. If your new home does not already have trash and recycling carts, please call Sanitation at 812-349-3443

EMERGENCY ALERTS

The best way to get alerted about emergency work CBU's doing is to sign up for the "Resident Alert" at co.monroe.in.us The system will call, email, and/or text each affected customer in the case of boil water advisories. We also post information to:

- bloomington.in.gov/utilities
- CBU's Facebook
- CBU's Nextdoor
- Local Media (newspapers, radio, tv, radio stations, and field crews place street signs when on-site)



STORMWATER

Did you know that over 11,000 inlets and approximately 99 miles of pipes and ditches make up Bloomington's stormwater system?



How it works - Rainwater runs over the ground, enters storm drains, flows through pipes, and into streams.
Note: The water is not filtered along the way; therefore, only rain should enter storm drains

If you see something going into an inlet and are worried about the effects on our local environment, give us a call on our 24 hour number at 812-339-1444

You can also help by adopting a storm drain in your neighborhood, and helping to keep it clear of debris.



Customer Relations 812-349-3930

600 E Miller Dr
Bloomington, IN 47401

Office Hours:
8:00 am to 5:00 pm
Monday - Friday

24/7 Emergency line is
available at 812-349-3930



812.339.1444
www.bloomington.in.gov

Your Guide To
**CITY OF
BLOOMINGTON
UTILITIES**

