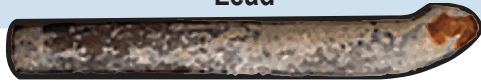


Types of Water Pipes

Lead



A dull, silver-gray color that is easily scratched with a coin. Use a magnet...strong magnets will **not** cling to lead pipes.

Galvanized



A dull, silver-gray color. Use a magnet...strong magnets **will** typically cling to galvanized pipes.

Copper



The color of a copper penny.

Plastic



White, rigid pipe that is joined to water supply piping with a clamp

Lead in Home Plumbing

Prior to 1986, it was common for plumbers to use fixtures containing lead or lead solder. CBU adjusts the water's chemistry at the treatment plant to reduce the possibility of lead dissolving into the water from these sources. If your home has pre-1986 plumbing, you may want to have it inspected by a licensed plumber to identify lead and galvanized pipes. If you believe your home may have lead plumbing, there are steps you can take to reduce exposure:

- Run the tap for several minutes before use
- Use only cold water for cooking or drinking
- Clean faucet aerators
- Purchase a home filter certified for lead removal



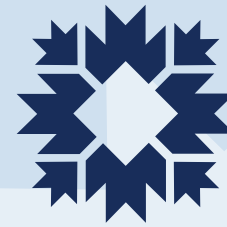
**For more
information about the
Service Line Inventory
visit:**

bloomington.in.gov/inventory



Contact us at:

wq@bloomington.in.gov
(812) 349-3655



**CITY OF
BLOOMINGTON**
UTILITIES



*Let's
Get the
Lead Out!*

**Service Line
Inventory**

Water Quality is Our Top Priority

Providing safe, reliable water is our top priority. To ensure your water meets all local, state, and federal safety standards, City of Bloomington Utilities (CBU) analyzes thousands of samples every year for a wide range of contaminants, including lead.

Elevated levels of lead in the human body can pose serious health risks, particularly for pregnant women, infants, and young children.

CBU's drinking water does not contain lead when it leaves the treatment plant. However, water can dissolve lead particles in private service lines and fixtures containing lead.

CBU provides free in-home water testing kits for customers who want to check for the presence of lead. You can request a water test by emailing wq@bloomington.in.gov.

More detailed information about the overall water quality of CBU's drinking water may be found in the annual water quality report at

bloomington.in.gov/utilities/water-quality.

What is the Service Line Inventory?

CBU is inventorying all private and public water service lines in our distribution system. The Service Line Inventory (SLI) is a requirement of the United States Environmental Protection Agency (EPA) for municipal utilities to locate lead water lines that remain actively in service on both the private and public side of the water distribution system.

How it Works

CBU is using several methods to create an inventory of the entire distribution system that we will submit to the EPA for approval. We are using data from GIS and building plans, historical data such as materials available when the building was constructed, and physically looking at pipes throughout the city.

How You Can Help

For properties selected for the physical inventory, CBU will send a letter and request a Right of Entry Agreement with the property owner, which grants permission so CBU can access the property to excavate, locate, and identify the material of your water service line. If you already know the composition of your water service line from prior plumbing work, please contact CBU to report your findings. This will save CBU time as we will not need to dig on your property.

What to Expect

The day of the project, CBU will excavate two holes-- one on the private side of the water meter and one on the public side of the meter. From these two excavations, CBU will determine the composition of both sides of the line. The holes will be filled, smoothed, and covered in grass seed and straw that same day. This process should take approximately one hour to complete. Neither owners nor tenants are required to be present.

What Happens After

All lead water service lines that CBU identifies will be recorded into an inventory list and incorporated into the comprehensive city-wide lead service line replacement schedule. Details on line replacement will be available in the coming months.

Typical Water Service Line

