

The Habitat Connectivity Plan & Pledge

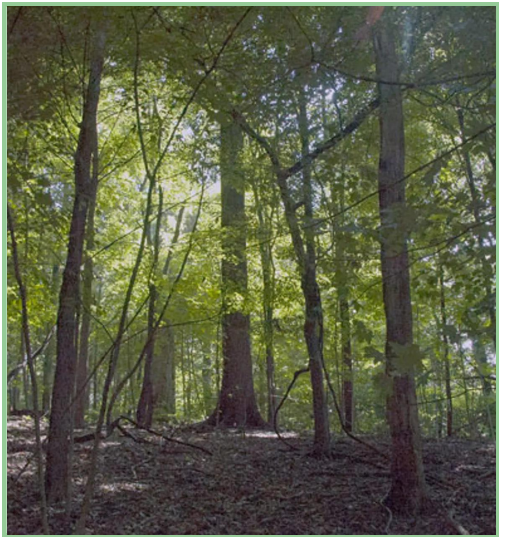
Bloomington's sights would mean nothing if not for the natural world in which they're embedded. Conserving and enhancing this nature — which has been in Bloomington for much longer than we have — is not only paramount to keeping our community beautiful, but also to keeping its residents, of all species, healthy and prosperous. The Environmental Commission created a pledge and Habitat Connectivity Map for landowners that decide to participate in this program. The QR code scans to the EC's Habitat Connectivity webpage with links, instructions, and examples attached.



<https://bloomington.in.gov/boards/environment/habitat-connectivity>

The mission of the Environmental Commission is to advise the City of Bloomington on how its actions and policies may preserve and enhance the quality of Bloomington's environment, including the life supporting processes that natural ecological systems provide to humans and other organisms.

Bloomington Habitat Connectivity Pledge



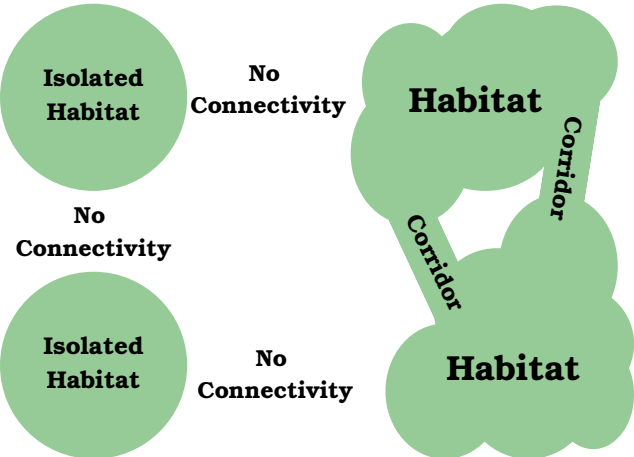
**A program developed by the
Bloomington Environmental
Commission**

Recommendations

- 1** Conserve habitat before, during, and after development.
- 2** Prioritize the habitat potential and permanent connectivity of an area when making land use decisions.
- 3** Connect isolated areas of habitat by producing greenspace corridors.
- 4** Enhance habitat quality in stable areas.
- 5** Inform Bloomington residents of the ecological benefits of habitat connectivity and encourage citizen involvement in habitat restoration.

Why do we preserve our land?

Greenspaces contribute to plant and animal habitat, ecological diversity, healthy air, soil, and water, reductions in energy use, and climate-change mitigation. The smallest greenspace can make the world of difference to enhance an ecosystem.



Why should we care?

Very few people can mimic a mature upland forest ecosystem in their urban landscape, hence this connectivity project. Think of the whole city as the ecosystem, and if you have one large canopy tree, this can be your contribution. If you plant native shrubs or herbaceous plants for pollinators, that is your contribution. No one can do it alone, but combining the features in our yards or patios with the neighboring ones, renews a native upland forest habitat called Bloomington.



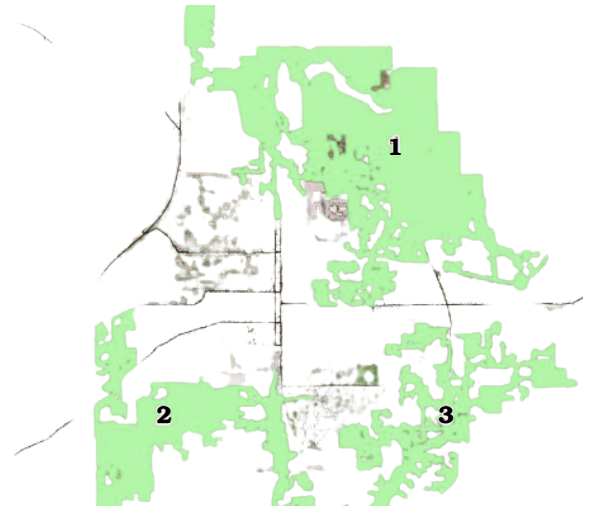
Image courtesy of VisitBloomington.com

The threat of invasive species.

Native species are important to the ecological processes that shape our environment and human life in Bloomington. Invasive species threaten the extinction of our native species. Our job is to remove as many invasive species as possible so that Bloomington's greenspaces flourish.

The Bloomington Habitat Connectivity Plan

Bloomington is fortunate to have three large zones of habitat, termed *Priority Greenspace Areas*: No.1 Griffy Lake; No.2 Clear Creek; and No.3 Jackson Creek.



Our goal is to connect these areas and fight habitat fragmentation. We want to ensure that flora and fauna are safe moving from place to place. A high-quality corridor will improve biodiversity, making it easier for species from different parts of the city to cultivate and reproduce. Biological diversity is important to maintain the ecological services that species provide; these are so essential to a thriving ecosystem and local economy, we can no longer afford further decline in biodiversity within the city limits.

The Environmental Commission asks interested landowners to plant and preserve native species and remove invasive species from their property. Adding your greenspace to the Habitat Connectivity map will help to illustrate the habitat corridors between our three Priority Greenspace Areas.