



# Clear Creek Culvert Reconstruction Update



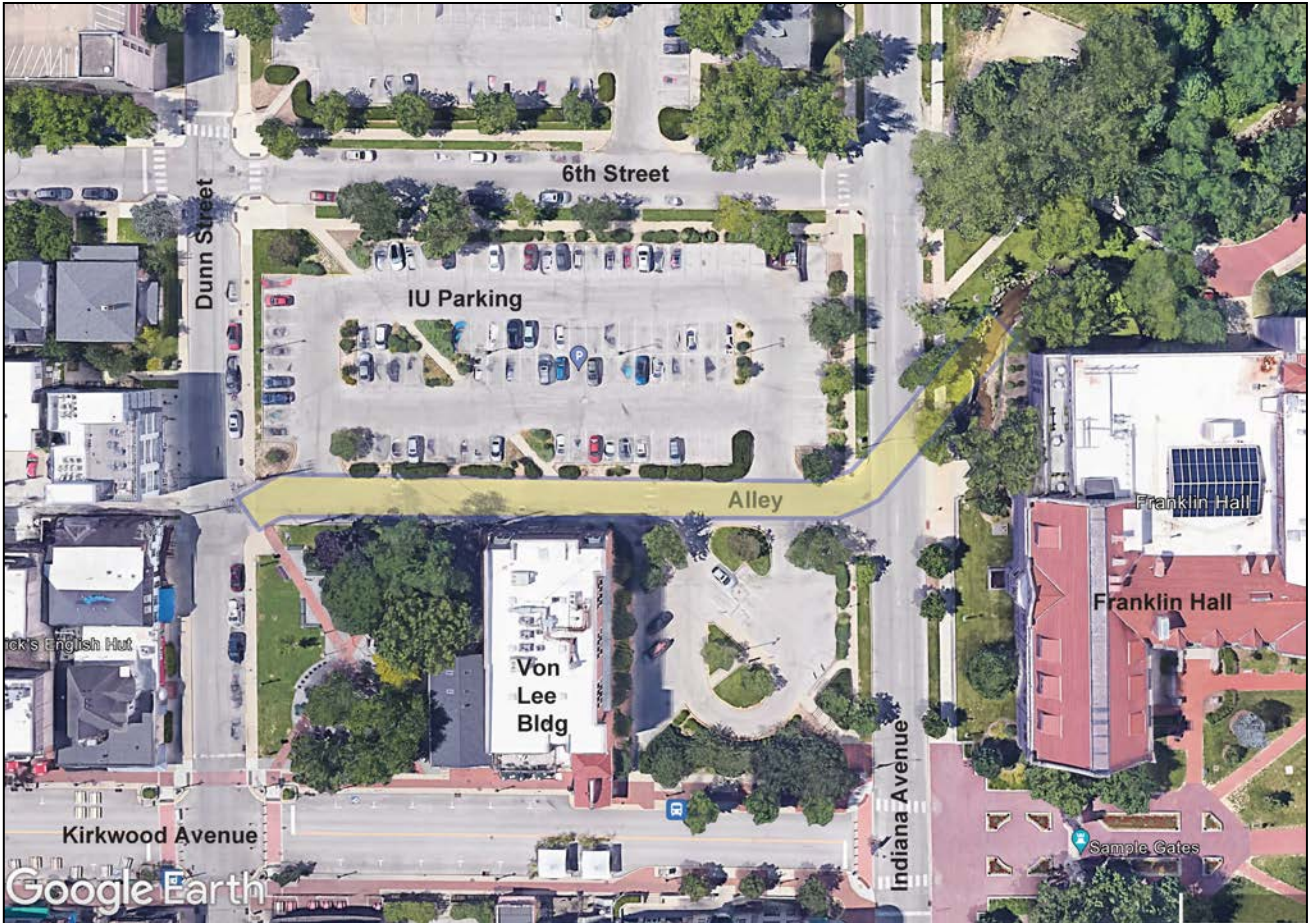
**November 9, 2023**





# Clear Creek Culvert Reconstruction

## Dunn Street to Indiana Avenue







# Clear Creek Culvert Reconstruction

## *Project Includes:*

### **Storm -**

- *Replacement of the Box Culvert and connecting storm sewers*
- *Additional inlets for surface drainage*
- *Extension of the culvert to the northwest corner of Franklin Hall*

### **Sanitary –**

- *Replacement of the sanitary interceptor that occupies part of the existing culvert*
- *Eliminate the sanitary pipe that crosses in front of the culvert opening*

**Water –** *Completion of a desired connection (8” Main) in Indiana Avenue*



# Clear Creek Culvert Reconstruction

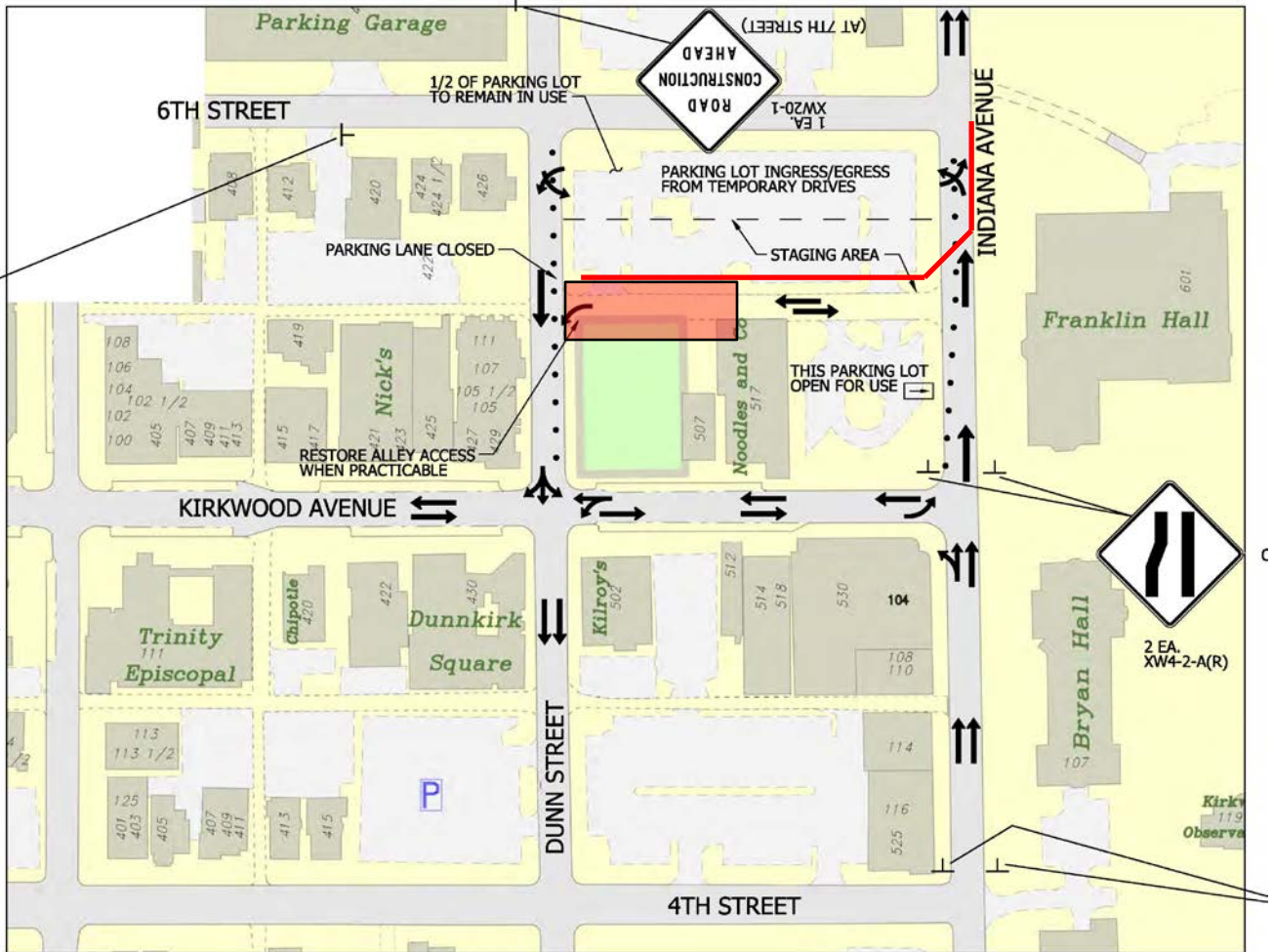
## ***Restoration -***

- ***All areas west of Indiana to be restored to match current layout of parking lots, landscaping, sidewalks, curbs, etc.***
- ***The Alley will have a better-defined inverted crown (drain to center) then three inlets through the top of the culvert in the alley***





# Clear Creek Culvert Reconstruction



Pre-Project Utility Relocations

Utility Relocation (Electric/Telecoms)

Work is complete





# Clear Creek Culvert Reconstruction



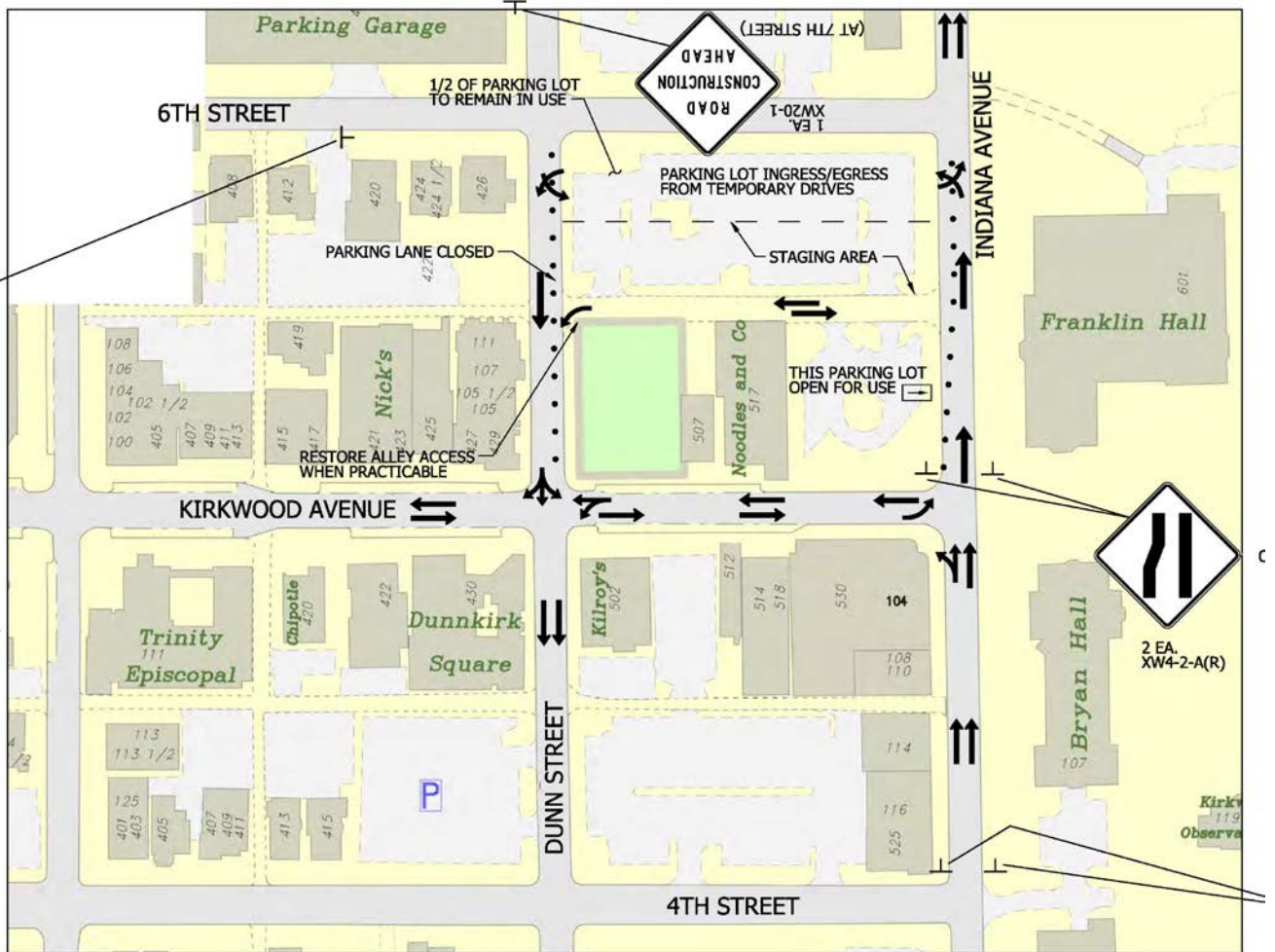
## Phase 1 Sanitary Interceptor Relocation

- Closure of Alley Apron at Dunn
- Crossing of Indiana
- Set up primary staging area in IU parking lot

**Approx. 4 weeks – January 2024**



# Clear Creek Culvert Reconstruction



CLOSE PARKING LANE  
STARTING AT 6TH STREET

## Phase 1 Anticipated Traffic Pattern

**Indiana Ave - Open 1 Lane either left or right for  
Sanitary Sewer installation**

**Short term closure of Alley at Dunn but can reopen  
once sanitary work is clear**





# Clear Creek Culvert Reconstruction



## Phase 2

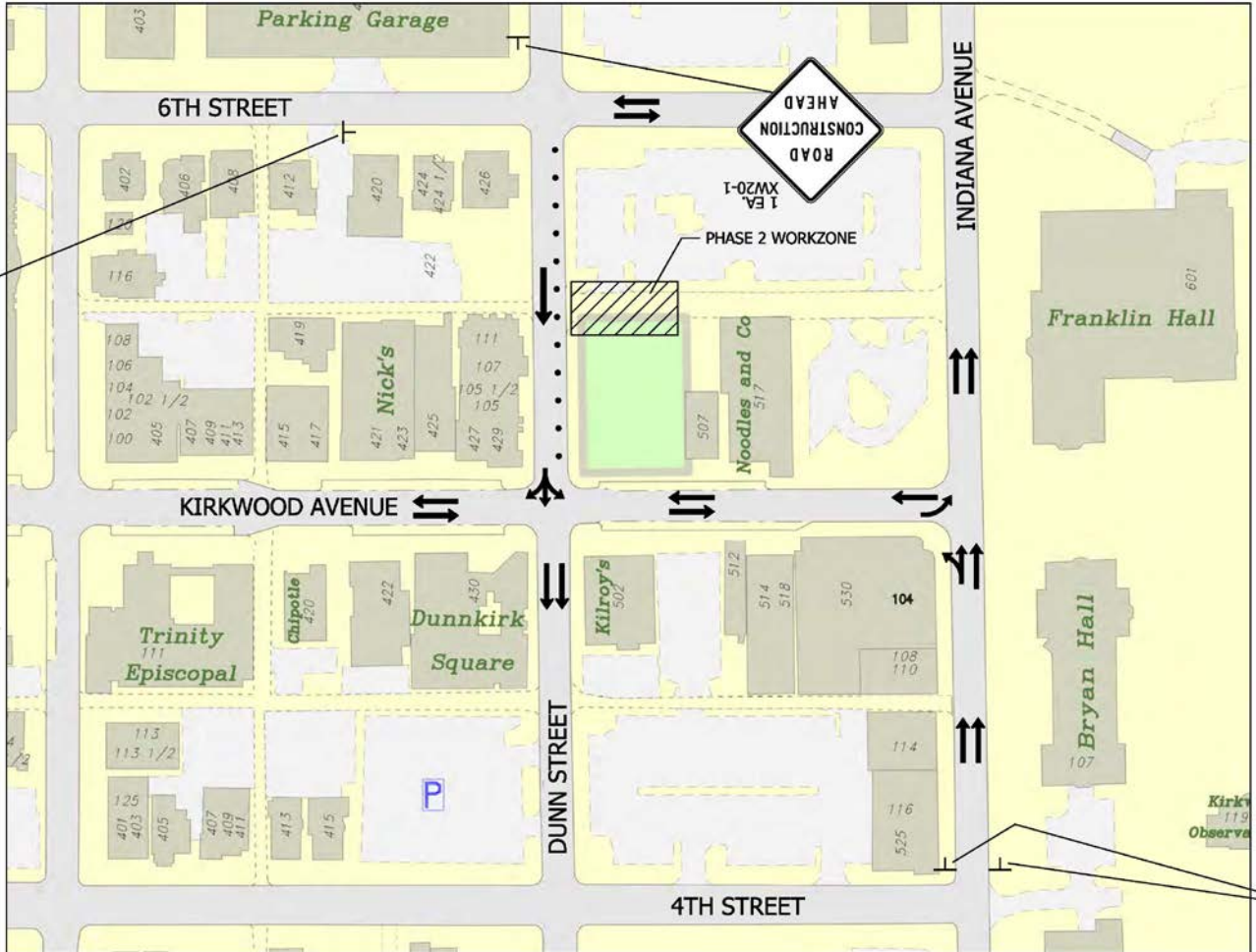
**First Section of Culvert –  
Closure of Alley at Dunn  
Access to Bike Garage and Von Lee from Indiana**

**~4-6 weeks Early Feb- Mid March 2024**





# Clear Creek Culvert Reconstruction



CLOSE PARKING LANE  
STARTING AT 6TH STREET

## Phase 2 Anticipated Traffic Pattern

**Access to Bike Garage and Von Lee from Indiana**



# Clear Creek Culvert Reconstruction



## Phase 3

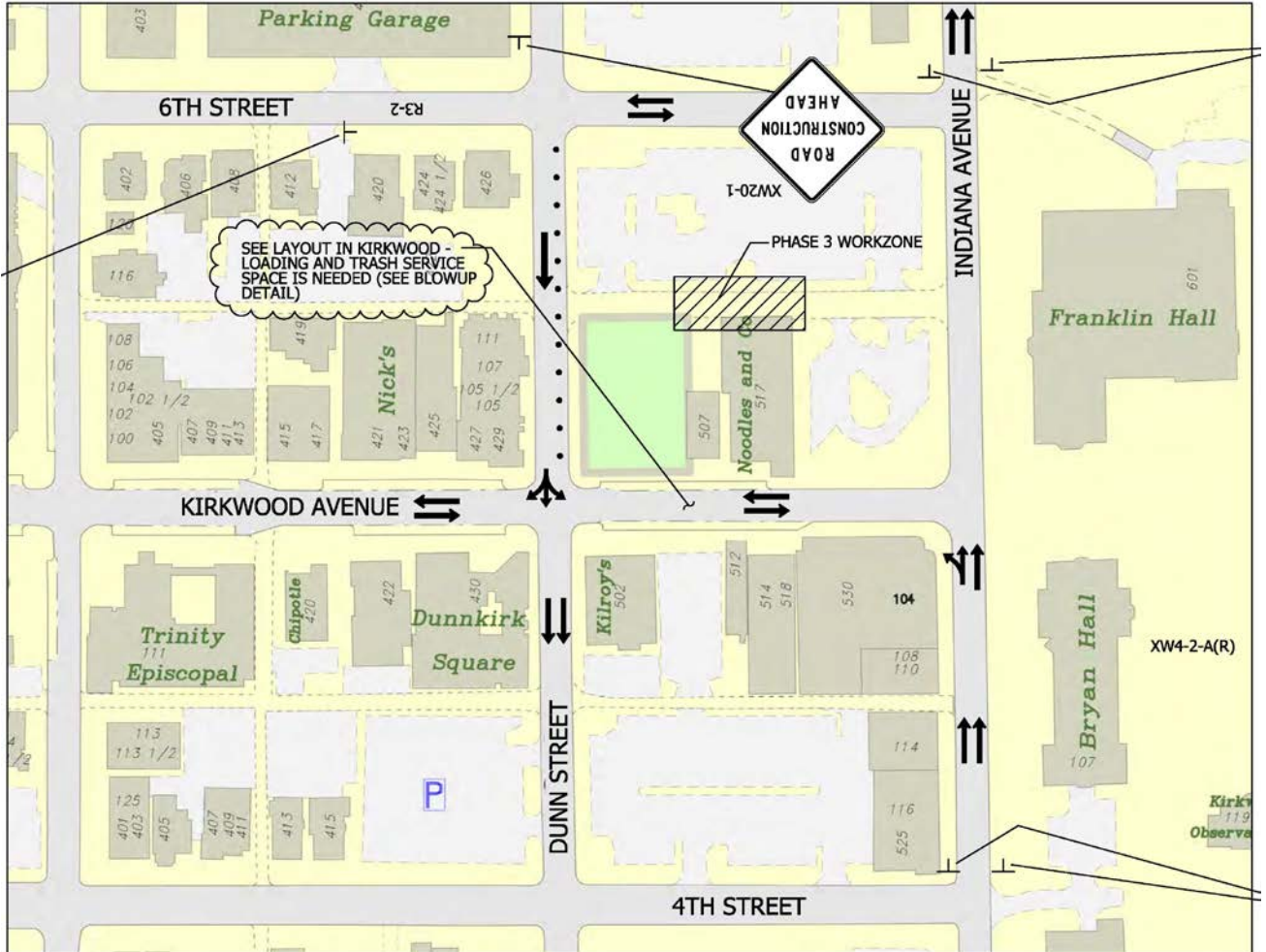
**Section behind Bike Garage and Von Lee  
Alley open at Indiana to IU parking lot  
Modified use of parking lane on Kirkwood**

**~4-6 weeks (Mid March to End of April 2024)**





# Clear Creek Culvert Reconstruction

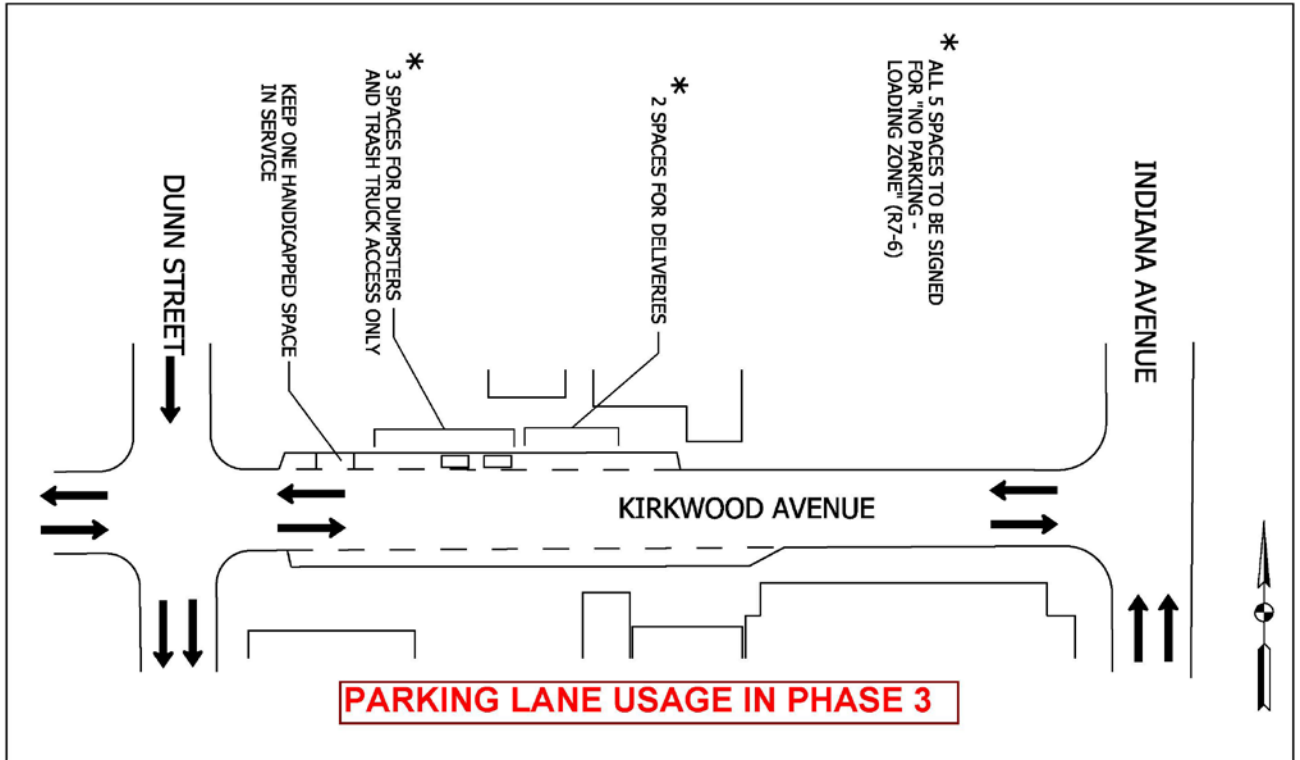


CLOSE PARKING LANE  
STARTING AT 6TH STREET

## Phase 3 Anticipated Traffic Pattern



# Clear Creek Culvert Reconstruction



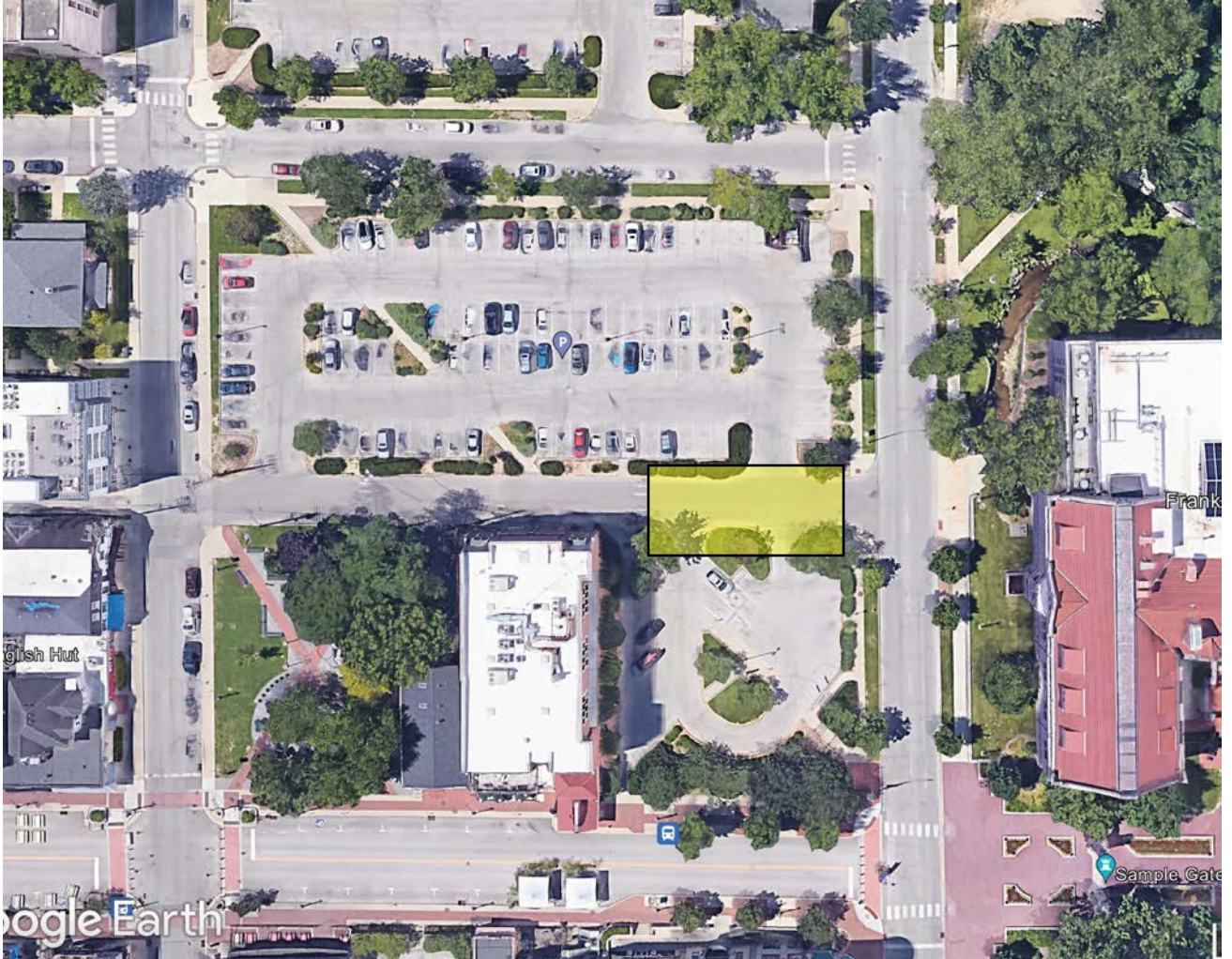
## Phase 3

Short Term Impact to Parking Lane Usage on Kirkwood





# Clear Creek Culvert Reconstruction



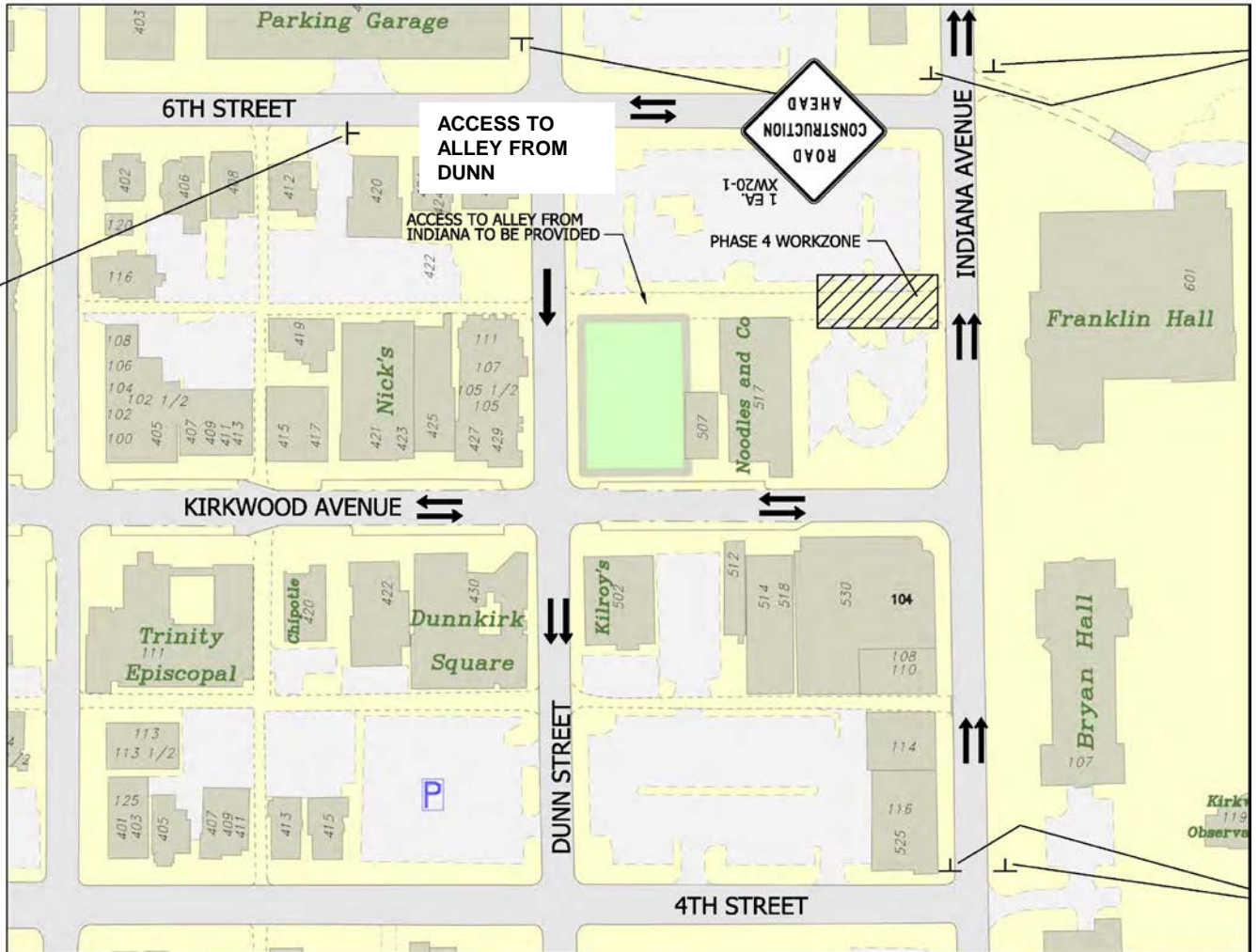
## Phase 4

**Closure of Alley at Indiana  
Access to Bike Garage and Von Lee from Dunn  
Normal operations of Kirkwood restored**

**~4 weeks duration – May 2024**



# Clear Creek Culvert Reconstruction



Phase 4  
Anticipated Traffic Pattern





# Clear Creek Culvert Reconstruction



## Phase 5

**Culvert under Indiana Avenue**

**Closure of Indiana - Formal posted detours**

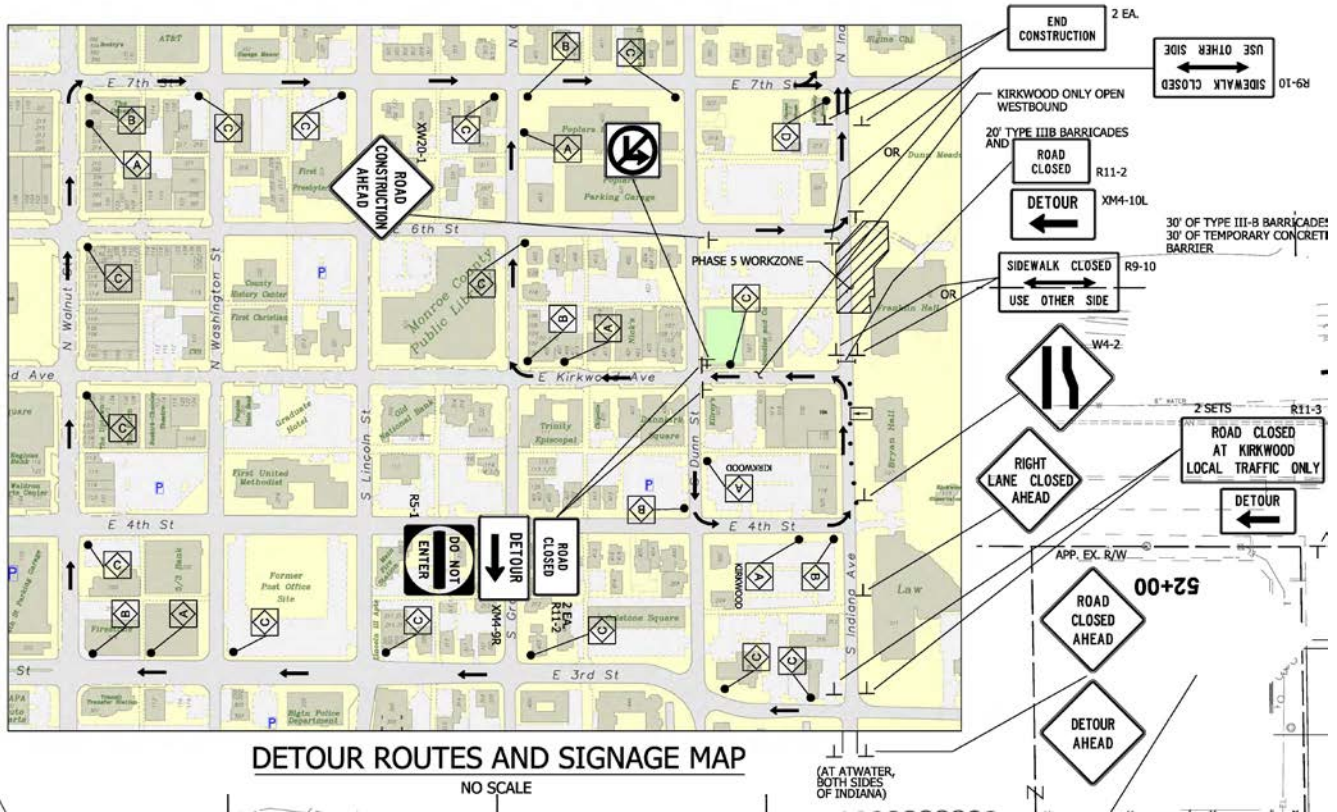
**Only westbound traffic on Kirkwood allowed**

**Access to Bike Garage and Von Lee from Dunn**

**~8-10 weeks (June-Early August 2024) – Req'd to  
reopen Indiana prior to student return**



# Clear Creek Culvert Reconstruction



## Phase 5 Anticipated Traffic Pattern





# **Clear Creek Culvert Reconstruction**

*Item for Discussion –*

*Construction Phase Communication  
Format, Frequency, Location*

*My contact info:*

**[bridgway@eticagroup.com](mailto:bridgway@eticagroup.com)**

**317-370-9672**



# Clear Creek Watershed Hydraulic Analysis

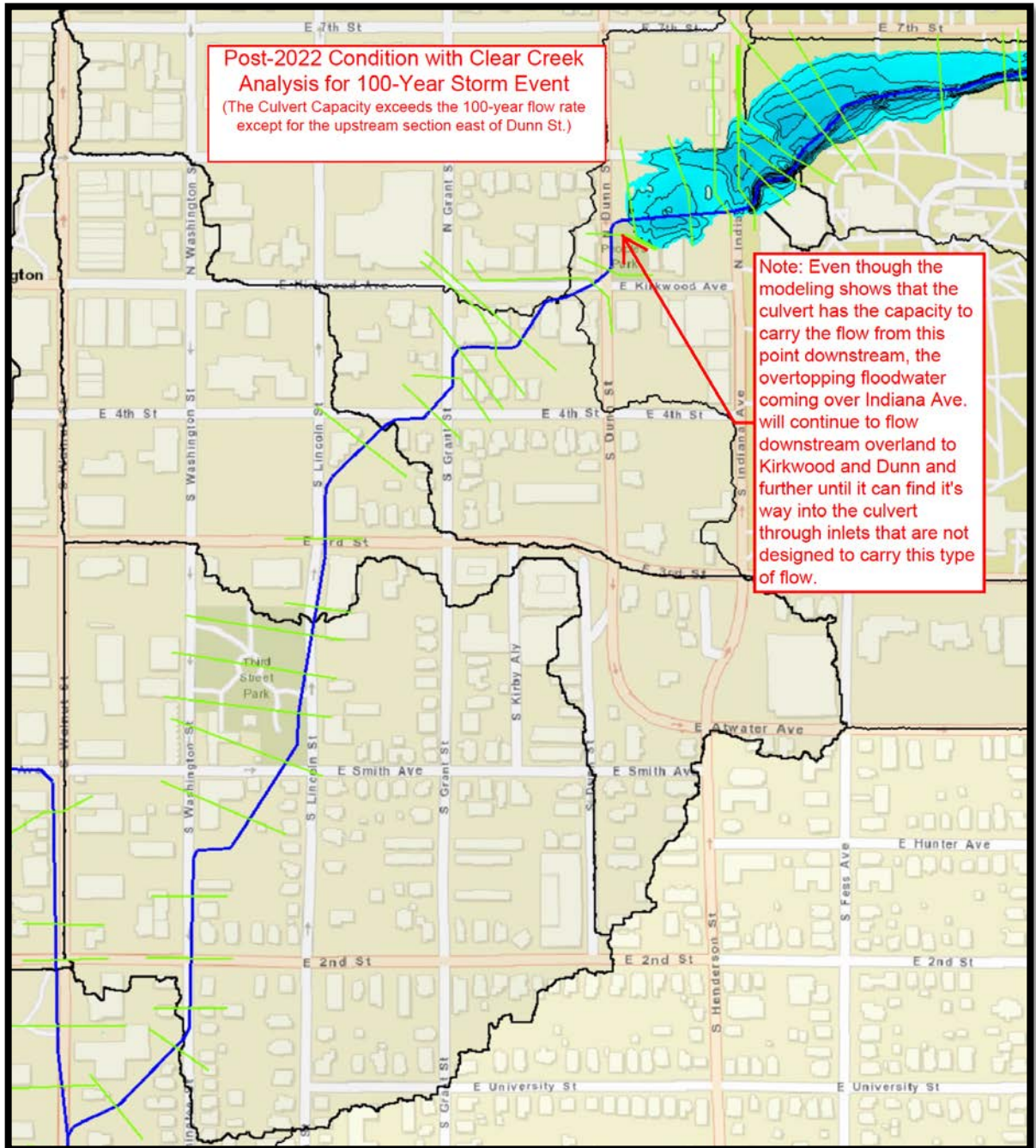


***Pre-2022 Condition***  
***Estimated 100-Year Storm Event***  
***On Aerial Map – Centered on Kirkwood***





# Clear Creek Watershed Hydraulic Analysis

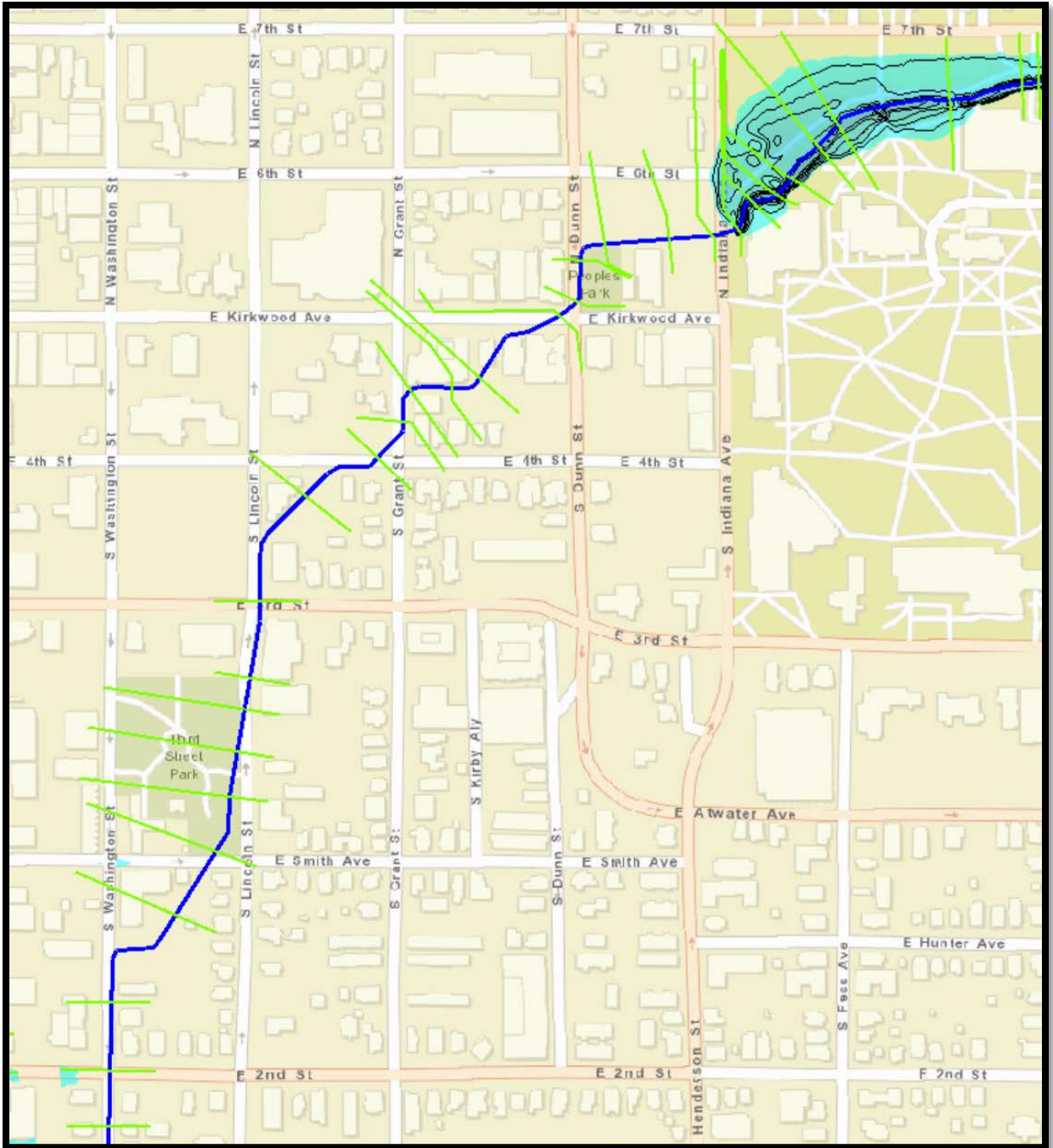


**Current Condition (Post-2022 Project)**

**Estimated 100-Year Storm Event**



# Clear Creek Watershed Hydraulic Analysis



***Anticipated Condition after 2024 Project***

***Estimated 100-Year Storm Event***