

RESIDENTIAL STORMWATER GRANTS 2024



AGENDA

- **Introductions**
- **Residential Stormwater Grants 2024**
- **Bloomington's Watersheds**
- **Residential Stormwater Practices**
- **Question and Answer Session**
- **Adjourn**

CITY OF BLOOMINGTON MS4 STAFF

Kriste Lindberg

Stormwater Education Specialist

Liz Carter

MS4 Program Coordinator



DEADLINES

Applications Due

**Sunday, September 1, 2024
by 5 pm**

SUBMITTALS

Submit Applications To:

bloomington.in.gov/utilities/stormwater/grants

RESIDENTIAL STORMWATER GRANTS

- Addressing neighborhood drainage and erosion issues
- Small grants for stormwater projects on private property



2023 GRANTS

- **6 projects** were awarded comprising a combination of bioswales, dry creek beds, rain gardens, and other erosion control measures.
- **Project costs varied; average was about \$6,000**

ELIGIBILITY



- **Single-family residential properties**
- **Applicants must pay the City of Bloomington's stormwater fee**
- **Applicant(s) must be the owner(s) of the property**
- **The parcels must be contiguous (next to each other)**

APPLICATION INSTRUCTIONS

- First, contact us for more info
- Read the Guidelines (see website)
- Choose a Contractor
- Fill out Application, including:
 - Provide applicant Information
 - Project Information
 - Description of Existing Conditions
 - Description of Proposed Project

bloomington.in.gov/utilities/stormwater/grants



CHOOSING A CONTRACTOR: TIPS

- Licensed and bonded
- Insured
- Drainage experience
- Ask for examples
- Ask for references

APPLICATION INSTRUCTION - Attachments

- Location Map
- Photographs (up to 4, please no videos)
- Plan View Sketch
- Cost Estimate



PROJECT SELECTION

Staff Review

- Location
- Drainage area
- Proximity to waterways or stormwater infrastructure
- Potential to reduce flooding
- Potential to improve water quality
- Median neighborhood income levels

Review Committee

- Application materials
- Equity
- Preference to number of people/area served
- Project feasibility
- Potential benefits in relation to stormwater system

AWARDED PROJECTS

- **Grant Agreement**
- **CBU will do a site visit before the project commences and inspect the project once it is finished**
- **CBU pays the contractor after a successful final site inspection has been conducted.**
- **5-year Maintenance Plan**



WHAT IS STORMWATER?

Water that flows over land from rainfall or snowmelt, before it enters natural waterways



OUR CHANGING CLIMATE

More frequent and intense rainfall events punctuated by longer periods of drought.

Remember June and July, 2021?



We have an
opportunity to make
a difference.

STORMWATER PROGRAMS

- Storm Drain Marking Program
- Adopt-a-Drain
- Residential Stormwater Grants
- Stormwater Education Series

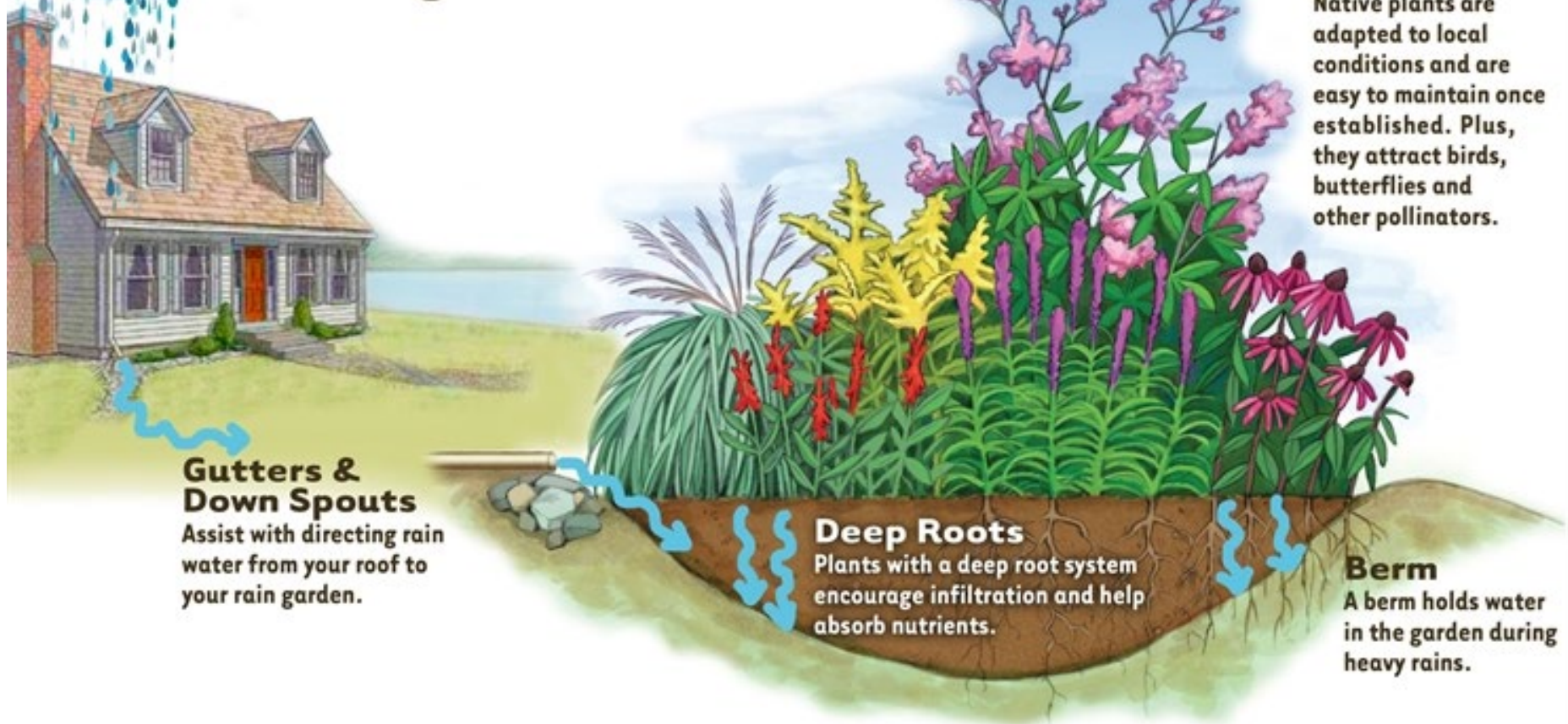




RESIDENTIAL STORMWATER PRACTICES

- Rain gardens
- Bioswales
- Dry Creek Beds
- Detention or Retention Ponds
- Ditch Stabilization
- Driveway Culverts

How does a rain garden work?



Gutters & Down Spouts

Assist with directing rain water from your roof to your rain garden.

Deep Roots

Plants with a deep root system encourage infiltration and help absorb nutrients.

Berm

A berm holds water in the garden during heavy rains.

Native Plants

Native plants are adapted to local conditions and are easy to maintain once established. Plus, they attract birds, butterflies and other pollinators.

RAIN GARDEN



BIOSWALE

- Linear channel that is planted with vegetation similar to a rain garden
- Great for pollutant removal
- Requires engineered soil
- Large drainage areas will require an underdrain

DRY CREEK BED

- Only carries water after rain events
- Not meant for ponding water or removing pollutants
- CBU prefers projects which emphasize vegetative cover over “gray” infrastructure.



BIORETENTION PONDS



RETENTION AND DETENTION PONDS – Maintenance

- Capture runoff to prevent downstream flooding
- May improve water quality





DRIVEWAY CULVERTS

- **Interface between public and private infrastructure**
- **Requires pre-construction meeting with CBU, the contractor, and the homeowner**

SUBMITTALS

Submit Complete Applications To:

bloomington.in.gov/utilities/stormwater/grants

CONTACT

Stormwater Education Specialist

stormwater@bloomington.in.gov

(812) 349-3617

QUESTIONS?

THANK YOU!