

City of Bloomington, IN

Fire Department

Residents Academy 2024

Presented by Tom Figolah
Fire Prevention Officer



Fire Prevention Week

October 6-12



SMOKE ALARMS

Make Them WORK For You!™

FPFA FIRE PREVENTION WEEK

fpw.org

©2009 National Fire Protection Association. Smoke is a trademark of NFPA.

The poster features a cartoon fire dog wearing a yellow and red fire jacket and helmet, pointing its right index finger upwards towards a white smoke alarm. The smoke alarm has sound waves emanating from it, with the words "BEEP BEEP" written in red. The background is a light yellow gradient. The bottom of the poster has a red banner with various logos and text.

Mission



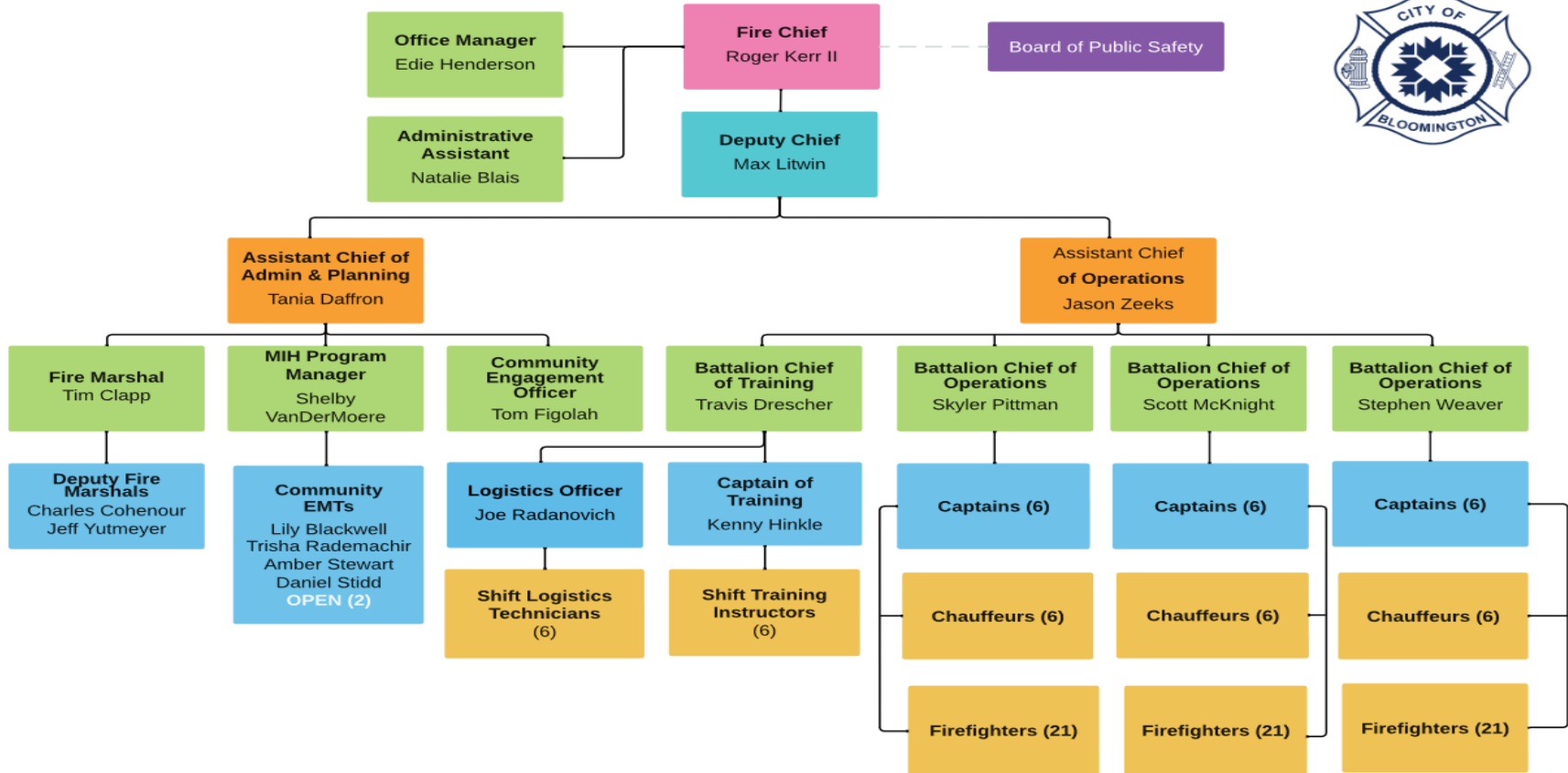
The **City of Bloomington Fire Department** exists to provide **excellent public safety** to everyone who lives in, works in, or visits the City, through superb **fire prevention, public education, mobile integrated healthcare, and emergency management/mitigation** completed by credentialed and trusted officials who receive first-rate training and high quality equipment.

Fire Department – Personnel

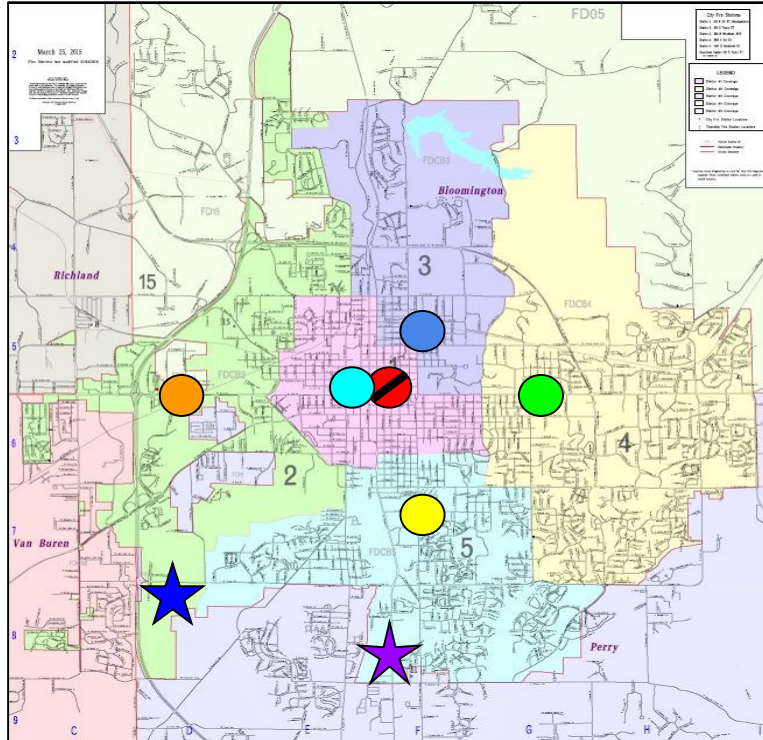
- Prevention 4 full-time employees
- Training 2 full-time employees
- Operations 105 full-time employees 97 now
(35 per shift, 3 shifts) 6
Prob.
- Administration 5 full-time employees
1 part-time employee
- MIH pending) **120.5 Full Time Employees** 5 full-time employees (2



BFD Shift Organization



Fire Department – Stations and Apparatus



- Station 1 (HQ) – 300 E. 4th St. (Built in 1990)**
Out of Service Due to Flood, Mid October move back in.
- Temp Station 1 - 226 S. College Ave.**
Engine, Command SUV, Squad
- Station 2 – 209 S. Fairfield Dr. (Built in 2001)**
100 Ft Platform, Engine
- Station 3 – 900 N. Woodlawn Ave. (Built in 1963)**
Engine
- Station 4 – 2201 E. 3rd St. (Built in 1971)**
75 Ft Quint (Aerial/Engine)
- Station 5 – 1987 S. Henderson St. (Built in 1988)**
Engine, Brush Truck
- ★ Training/Logistics – 2917 S. McIntire Dr. (Leased 2020)**
- ★ Fire Training Tower – 3230 S. Walnut St. (Refurbished 2020)**

We also maintain two reserve engines and one reserve aerial





Fire Department – Personnel

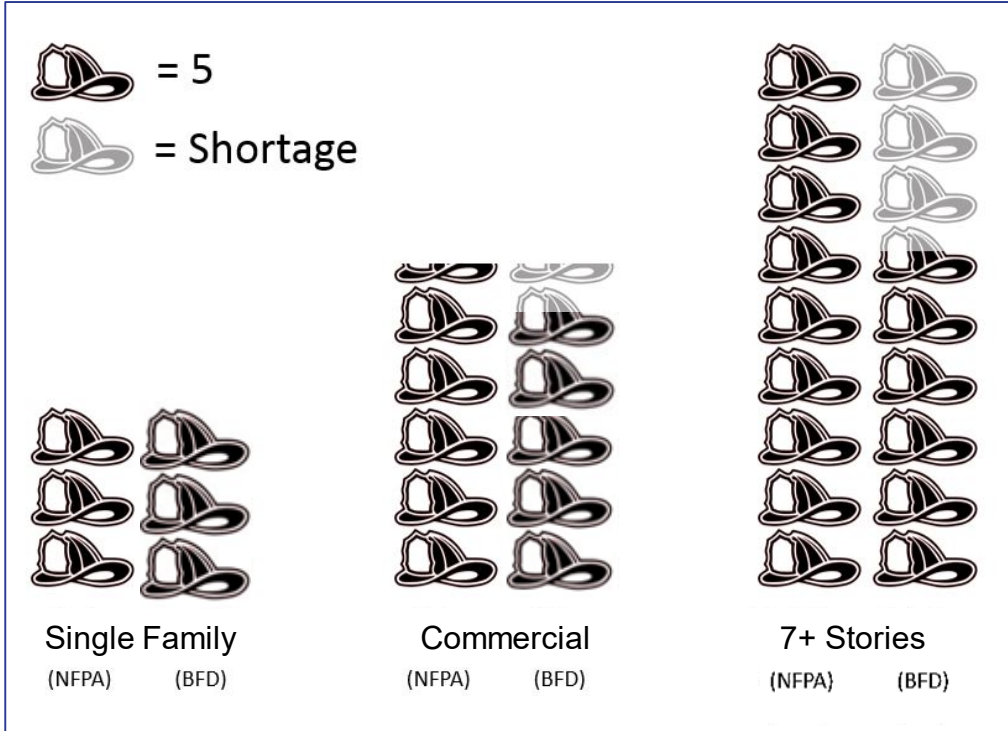
Current Department Diversity Profile

- 7% Female, 93% Male, 0% Other
- 4.3% BIPOC, 95.7% White
- 1.8% LGBTQ+



2023 Largest and most diverse recruit class
in department history

Fire Department – Staffing (NFPA 1710)



NFPA recommends:

Single Family House Fire	15 FF's
Commercial Fire	28 FF's
Building 7+ Stories (Fire)	43+FF's

Fire Department – Emergency Response

3 Shifts, Each Work 24 Hours

Fire Suppression

Emergency Medical Services (EMS)

Rescue

Hazardous Condition Investigations



Fire Department – Technical Rescue

Ice Rescue and Slow Water

Confined Space

Rope Rescue

Vehicle Machinery



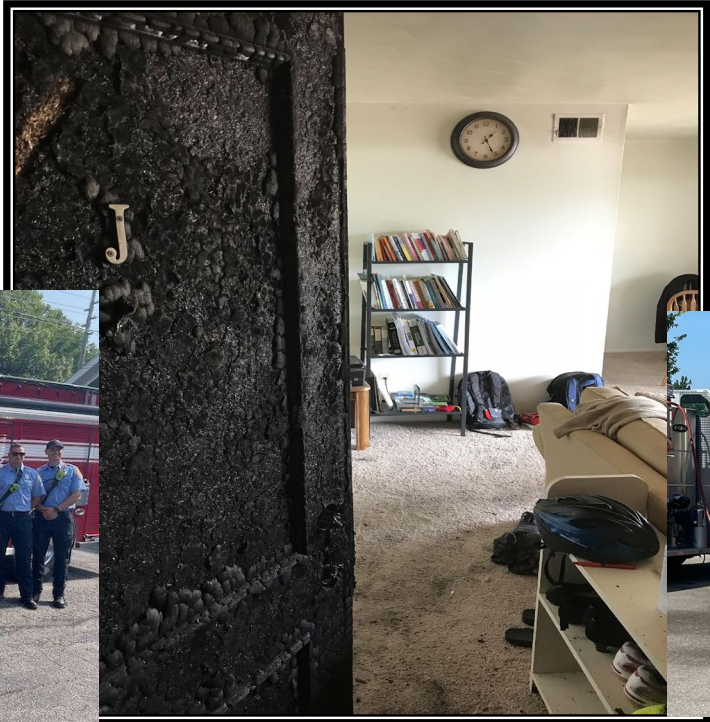
Fire Department – Prevention

There are three E's that serve as the foundation for a prevention division.

- **Education:** 8,033 Community contacts ranging from station tours to community CPR training (Jan-Aug.- 7,623)
- **Enforcement:** 1,253 (1,570) Fire inspections, 276 (126) Preplans, and 42 (32) Fire investigations.
- **Engineering:** 532 (430) Plan reviews, consultations, and Knox Box updates



Fire Department Prevention/Education/Outreach



Fire Department – Mobile Integrated Healthcare MIH

Improve the lives of individuals who need assistance in managing both chronic and short-term medical conditions, medications, or other crises. Focus on preventing 911 calls for service by working with other service providers to ensure continuity of care and follow-up thus ensuring individuals have a long-term solution.

Our goal is to improve quality of life for the patient by at least 1' %!

Fire Department – Mobile Integrated Healthcare MIH

- Formally established the program in the 4th Quarter of 2022
- New Community EMT's completed new State required training and began establishing community relationships
- Only fire-based program south of Indianapolis area



Fire Department – Mobile Integrated Healthcare MIH

MIH Provider Certifications

- Community Health Worker (CHW)
- Mental Health First Aid
- Car Seat Technician (CPST)
- GEMS & Dementia Friendly Providers
- Safe Sleep Certified
- Perinatal Mental Health Certified
- Breastfeeding Peer Counselor
- CPR Instructor
- Critical Incident Stress Mngt. (CISM)

Program Areas

- 1- Elderly Management
- 2- Substance Use & Mental Health
- 3- Healthy Living
- 4- Great Families

Fire Department – Mobile Integrated Healthcare MIH

- Received 100th referral to the program August 2023 (in less than 1 year)
- Received 270th referral to the program August 2024
- MIH providers visit patients a minimum of 3 times with an average of 8 times
- 350 patient interactions for the team August 2024 - this means BFD was working with community members at least 350 times in addition to 911 calls
- BIG WINS!

Fire Department – Training

- **2023 Hours– (45,838 hrs) 108% of Goal**
- **Reoccurring** – necessary to maintain skills and knowledge (19,318 hrs)
- **New Certification** – upgrading or adding to capabilities (4,205 hrs)
- **Physical Fitness** – maintains readiness and employee health (9,010 hrs)
- **Other/Specialty** – i.e. protocols, safe place, etc. (10,944 hrs)



Fire Department – Training Tower

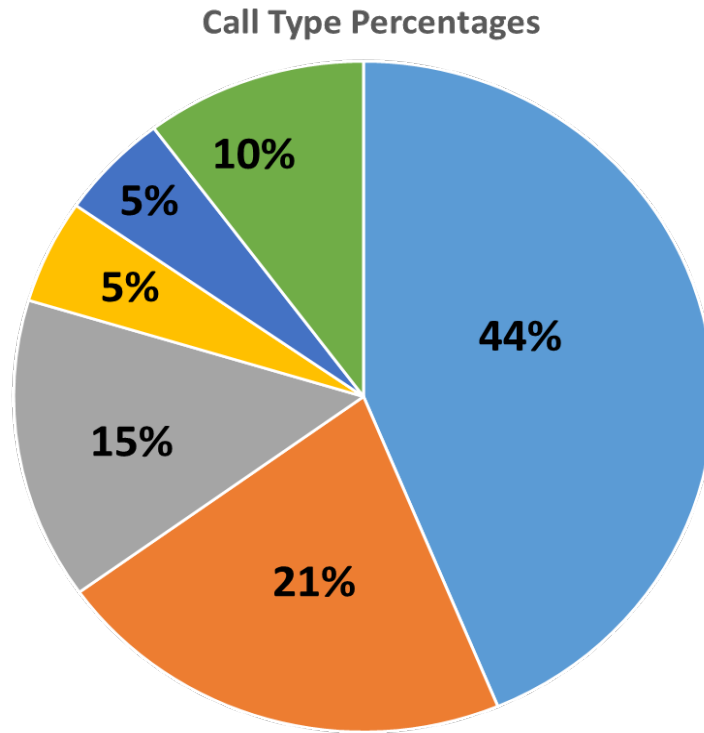


Fire Department – Operations (Call Types cont.)

Call Type		2022	2023	Diff 2022
Rescue/EMS		2,876	2,602	(+173)
False Alarm		864	1,278	(+11)
Other		870	454	
Fire		304	191	
Hazardous Condition	306	198	(+46)	
Service Call		451	609	(-190)
<hr/>				
Total Calls in 2023	5,961	4032	(+78)	



Fire Department – Operations (call types)



■ Rescue/EMS ■ False Alarms ■ Other ■ Fire ■ Haz Condition ■ Service Call



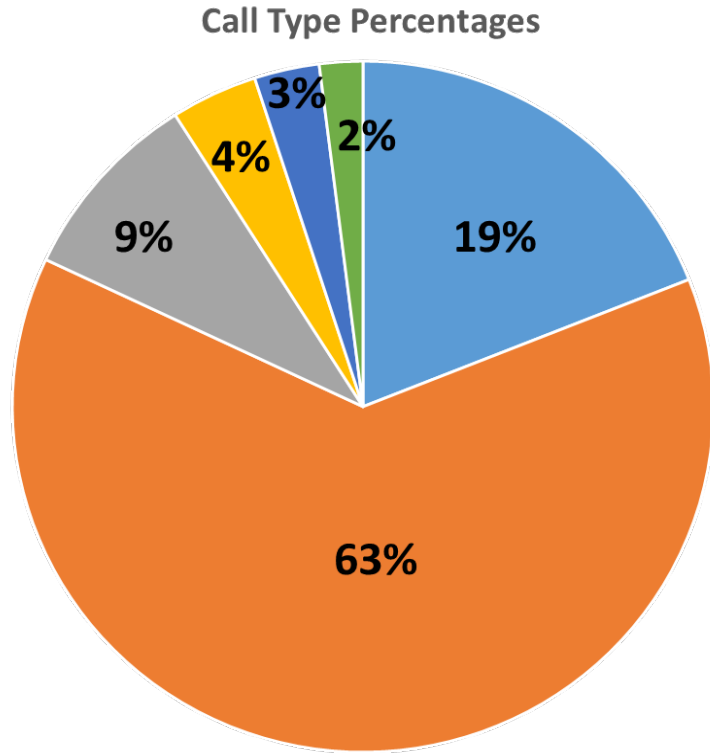
Fire Department – Operations (Call Types)

Call Type

<u>2023</u>	<u>Diff 2022</u>	<u>2024</u>	
Rescue/EMS		148	(+11)
81			
False Alarm		477	(+44)
284			
Other		70	
(+12)	32		
Fire		29	
(+11)	5		

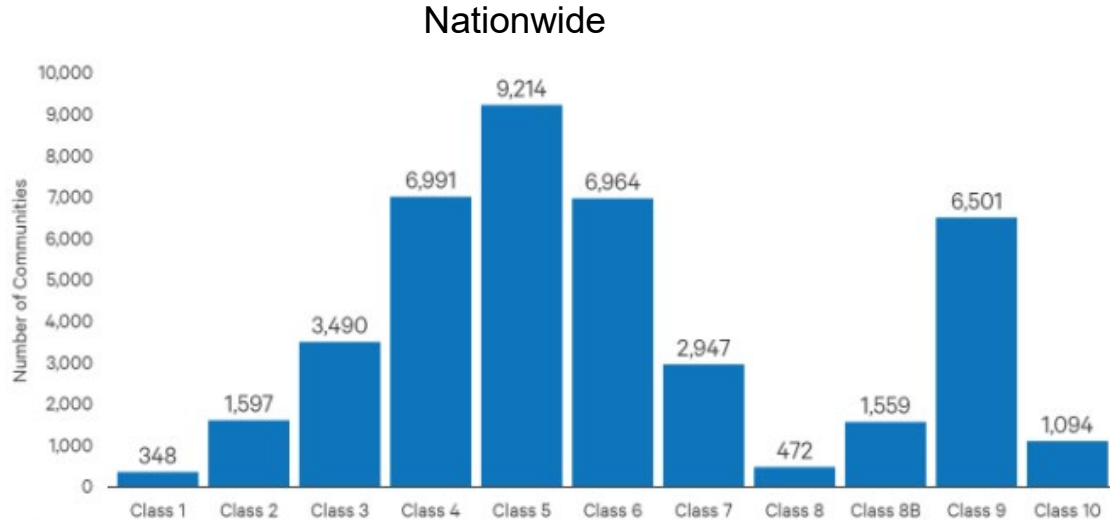


Fire Department – Operations (Call Types)





Fire Department – Operations (ISO Rating)



**City of Bloomington has an
Insurance Services Office (ISO)**

Rating of 1/1x

Top .01% of rated departments in the US
Top .05% of rated departments in Indiana
Best rated department in Monroe County



Fire Department – Administration

- Annual operating budget for 2024: **\$18,080,286**
 - (\$1,840,133 or 11% more than 2023 funding)
- Proposed operating budget for 2025: **\$20,571,661**
 - (\$2,491,375 or 14% more than 2024 funding)



Summary Budget Allocations	2022 Actual	2023 Actual	2024 Actual	2025 Actual	Change (\$)	Change (%)
100 - Personnel Services	10,623,730	11,641,610	12,340,178	15,692,529	3,352,351	27%
200 - Supplies	350,609	286,198	762,453	1,079,201	316,748	42%
300 - Other Services	1,048,001	2,117,963	2,661,655	1,399,931	1,261,724	-47%
400 - Capital Outlays	539,823	1,483,030	2,316,000	2,400,000	84,000	4%
Total	12,562,162	15,527,800	15,080,286	20,571,661	2,491,375	14%

Fire Department – Administration

2025 - The Fire Department's general fund, PS-LIT, and ED-LIT budget request is **\$20,571,661**, an overall increase of \$2,491,375 or 14%.

Fire Department 2025 Total Budget by Fund

Category	General Fund	ED LIT	Public Safety LIT	Total
1	15,275,013	417,516	0	15,692,529
2	735,131	0	344,070	1,079,201
3	1,394,431	5,500	0	1,399,931
4	0	0	2,400,000	2,400,000
Total	17,404,575	423,016	2,744,070	20,571,661

Fire Department – Administration

Here are some highlights of significance:

Category 1 – Personnel request is \$15,692,529, an increase of 27%.

Much of this is based on the wage increase agreement between the City and Local 586 reached through collective bargaining.

★ Unanimous YES vote from the union employees.

Fire Department – Administration

Category 2 – Supplies request is \$1,079,201, an increase of 42%.

- \$79,070 Radios/IT replacement
- \$75,000 Full quarter master system (uniforms, fire gear)
- \$75,000 Exercise equipment
- \$73,700 Vehicle Preemptive Devices (stoplight controls)

Fire Department – Administration

Category 3 – Other Services & Charges request is \$1,399,931, an decrease of 47%.

- Completion of Station 1
- The design phase of Station 3
- Training and travel
- Utility bills

Fire Department – Administration

Category 4 – Capital Outlays request is \$2,400,00, an increase of 4%.

- **Scheduled Equipment and Vehicle Replacement**

- \$1,000,000 Rescue Truck
- \$875,000 Replace Engine 4
- \$75,000 Replace Battalion 1
- \$60,000 SCBA Compressor
- \$50,000 Gear Washer

Fire Department – Administration

Category 4 – Capital Outlays, cont.

- **Facility Maintenance Projects**

- \$150,000 Station 1, Station 3, and Training / Logistics
- \$100,000 Station 2 maintenance projects
- \$80,000 Station 4 maintenance projects
- \$50,000 Station 5 maintenance projects

Why does it cost so much?

Helmet	\$385
Flash hood	\$100
Mask	\$820
Coat	\$2300
Pants	\$2100
Gloves	\$130
Boots	\$365
SCBA	\$6200
Spare Bottle	\$1000

Tools - \$11,000

Thermal camera - \$4000

Annual Physicals - \$1,200

Total:
\$13,400



Why does it cost so much?

New Fire Engine

\$850,000



Fire Growth and Development

 **HOME FURNISHING COMPARISON** 



NATURAL  04:31 **SYNTHETIC**

Close Before You Doze



Close Before You Doze



Close Before You Doze



Close Before You Doze



Fire Department – Conclusion



The City of Bloomington Fire Department has been serving and protecting the citizens/visitors of Bloomington and Indiana University for more than **124 years.**

Fire Department – Conclusion

Through continued support by the taxpayers and City Administration, our firefighters are well credentialed, have access to high-quality equipment, and receive first-rate training.

We are **Proud of our Personnel** and the important job they complete **24/7/365**.



For More Information

Tom Figolah – Fire Prevention Officer
Bloomington Fire Department

812-332-9763 headquarters

812-349-3888 direct office line

figolaht@bloomington.in.gov

bloomington.in.gov/fire