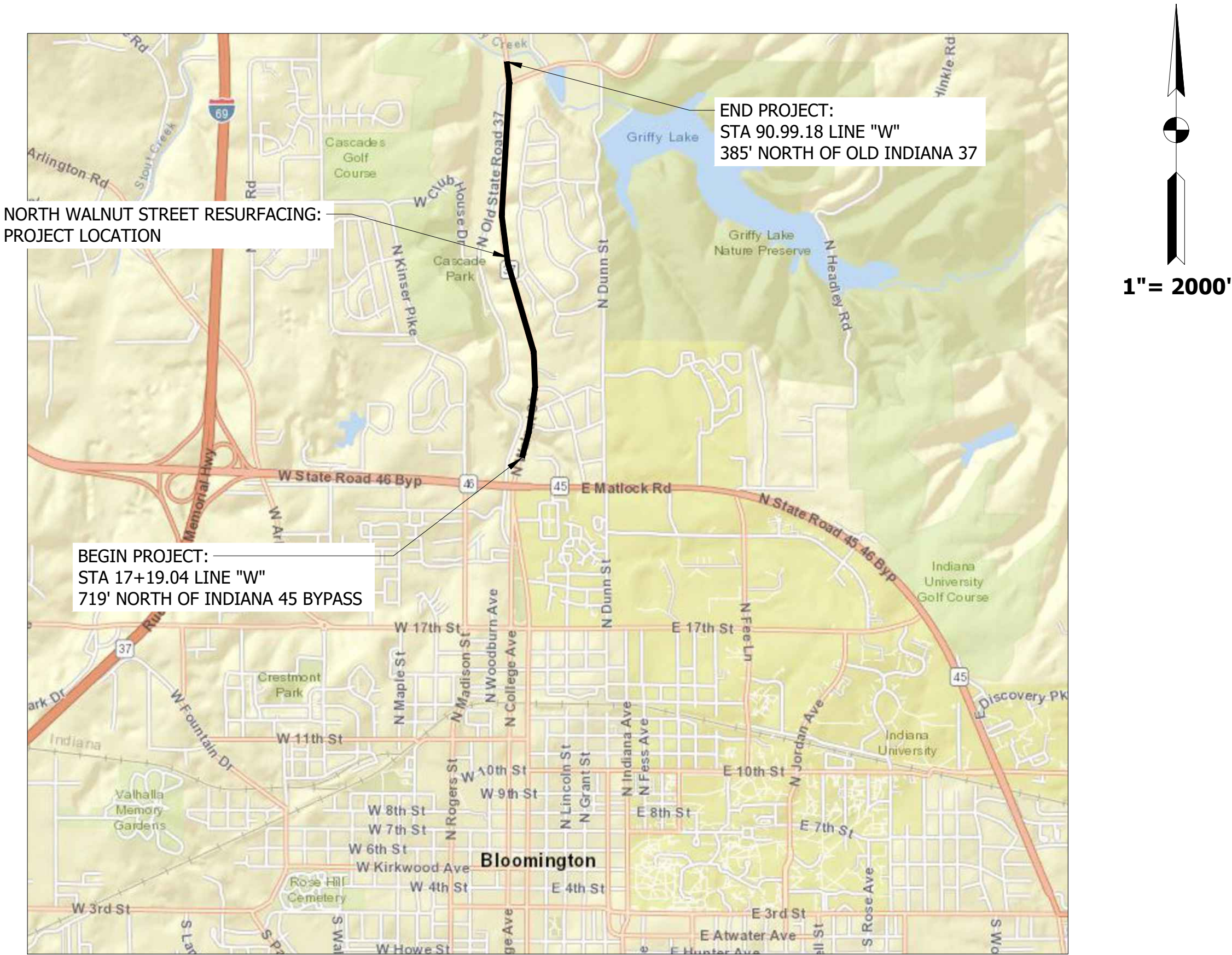


CITY OF BLOOMINGTON

NORTH WALNUT STREET RESURFACING

INDIANA 45 BYPASS TO OLD INDIANA 37

ROUTES: NORTH WALNUT STREET, STARTING AT THE EXISTING PAVING BREAK 719 FEET NORTH OF THE INDIANA 45 BYPASS AND NORTH WALNUT STREET INTERSECTION TO EXISTING PAVING BREAK 385 FEET NORTH OF THE OLD INDIANA 37 AND NORTH WALNUT STREET INTERSECTION
NORTH WALNUT STREET IS IN OF SECTION 21 & 28, T-9-N, R-1-W,
BLOOMINGTON TOWNSHIP, MONROE COUNTY, INDIANA
MILLING, HMA PAVEMENT, GUARDRAIL, CURB RAMP AND PAVEMENT MARKING REPLACEMENT



CITY OF BLOOMINGTON
MONROE COUNTY
INDIANA

GENERAL NOTES:
Pavement Patch, item "P", shall follow Asphalt Surface Street Cut Repair detail. Flowable fill is not required when there is no trench. Hot Poured Joint Adhesive (S906, a, 5) shall be used in joints between new asphalt and old asphalt, curb faces, gutter faces and concrete edges. "P" locations are not specified in all locations on plan sheets. "P" shall be 12" width when used adjacent to new "13", "15", "18" and "CR", installation.

Safety edge shall be constructed for all HMA pavements adjacent to aggregate or earth shoulders. The contractor shall identify the device(s) used to construct the safety edge in accordance with 409.03(c).

Contractor shall minimize disruption to adjacent landscaping. Any disturbed turf areas shall receive mulched seeding. Any disturbed landscaping shall be replaced with equal or better.

Sidewalks and Curb Ramps shall comply with PROWAG and INDOT standard details. All sidewalks, curbs and curb ramps shall be constructed on 4" of #53 compacted aggregate. Detectable Warning Surfaces shall comply with the City's approved material list.

Contractor shall contact Indiana Underground Location Service, 811, prior to commencing excavation work.

Blue raised pavement markers shall be installed adjacent to existing fire hydrants. Hydrant locations not show on plans.

All longline pavement markings are dimensioned to face of curb (FOC), lip of gutter or edge of pavement and center of stripe. For double lane lines, dimensions are to the point midway between the two lines.

Maintenance of traffic (vehicular and pedestrian): Continuous maintenance of access to businesses and residences shall be provided along with protection of the public from construction activities at all times. Temporary traffic control shall be provided by the contractor and shall be in accordance with the latest edition of the Indiana MUTCD. During paving operations with live traffic, the Contractor is required to provide temporary traffic control consistent with short-duration or mobile operations. During concrete operations requiring use of a roadway open to live traffic, the Contractor is required to provide temporary traffic control consistent with a lane closure on a two-lane road using flaggers. The contractor shall limit blocking the existing sidewalk to only times necessitated by sidewalk construction work. Appropriate pedestrian maintenance of traffic signage shall be in place during any sidewalk disruptions. If a sidewalk/multiuse path is blocked, and a sidewalk/multiuse path is available on the opposite side of the street, a detour route shall be provided on the opposite side of the street. If no sidewalk/multiuse path is available on the other side of the street, the closure shall be limited to 24 hours. If more than 24 hours, a walkaround shall be provided. Coordinate all pedestrian/vehicle detours with the City, Bloomington Transit and MCCSC when within 0.25 miles of a school. A pedestrian walkaround consistent with City of Bloomington Municipal Code 12.08.110 shall be provided if a portion of the sidewalk is closed for a period or periods totaling 24 hours or more.

Contractor shall be responsible for keeping the project site in a neat and safe condition at all times.

CITY OF BLOOMINGTON STANDARD DRAWINGS FOUND AT:
BLOOMINGTON.IN.GOV/ENGINEERING/RESOURCES TO BE
USED WITH THESE PLANS.

INDIANA DEPARTMENT OF TRANSPORTATION STANDARD
SPECIFICATIONS DATED 2024 AND CURRENT
SUPPLEMENTS THERETO, TO BE USED WITH THESE PLANS.

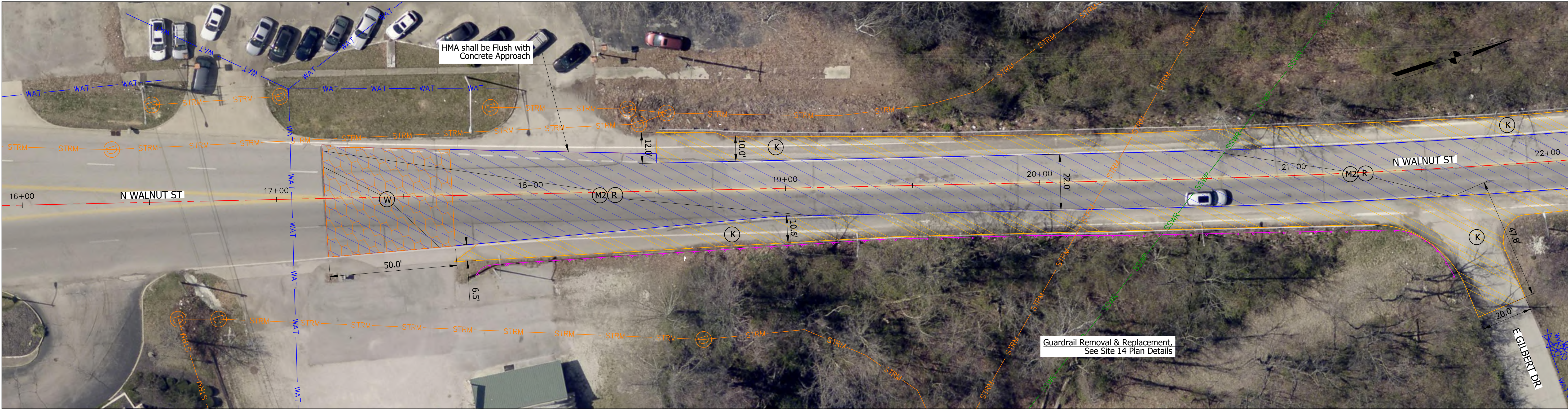
HORIZONTAL SCALE	BRIDGE FILE
N.T.S.	N/A
VERTICLE SCALE	DESIGNATION
N/A	N/A
SURVEY BOOK	SHEETS
N/A	1 of 20
CONTRACT	PROJECT
N/A	NORTH WALNUT RESURFACING



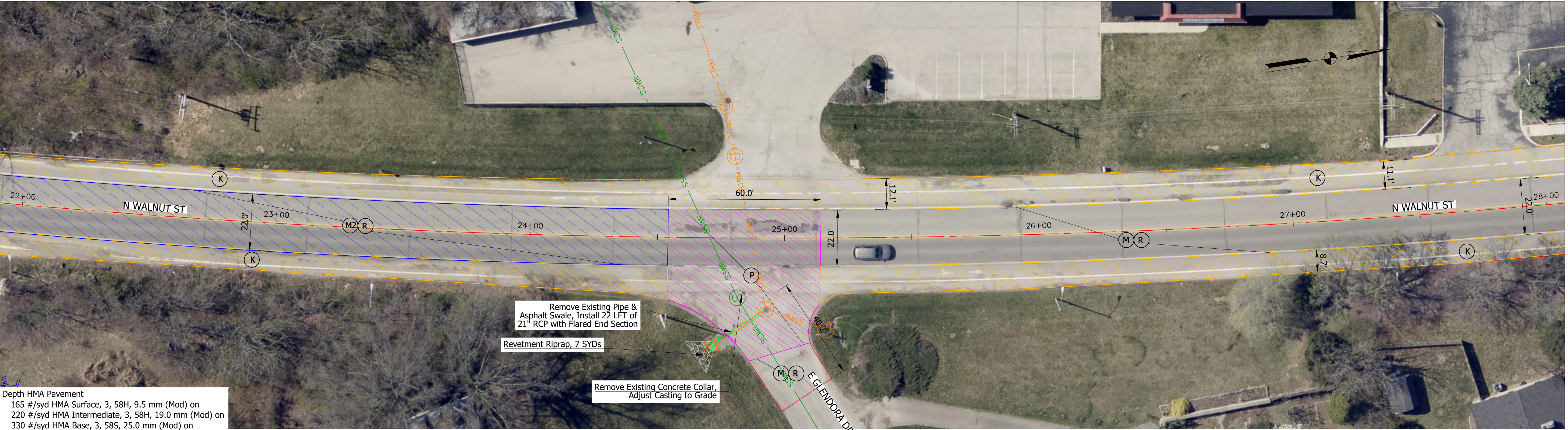
RECOMMENDED FOR APPROVAL	<i>Pat R. Dierkes</i>	04/15/2025
	ENGINEER	DATE
DESIGNED: PRD	DRAWN: PRD	
CHECKED: NK	CHECKED:	

CITY OF BLOOMINGTON
ENGINEERING DEPARTMENT

EAST WINSLOW ROAD RESURFACING
ALLENDALDE DRIVE TO SARE ROAD



Notes:
Variable milling depths are based upon road cores to ensure existing HMA is removed to the existing PCCP road. Milling depths shall be adjusted to ensure PCCP road is exposed and scarified. HMA resurfacing shall be 1-1/2" for the entire project, except in areas indicated for wedge and level to matching existing approaches.



(K) Full Depth HMA Pavement
165 #/syd HMA Surface, 3, 58H, 9.5 mm (Mod) on
220 #/syd HMA Intermediate, 3, 58H, 19.0 mm (Mod) on
330 #/syd HMA Base, 3, 58S, 25.0 mm (Mod) on
6 In. #53 Compacted Agg.

- (M) Milling, Asphalt, 1-1/2 in.
- (M1) Milling, Asphalt, 2 in.
- (M2) Milling, Asphalt, 2-1/2 in.
- (R) 165 #/syd HMA Surface, 3, 58H, 9.5 mm (Mod)
- (F) Sidewalk, Concrete, 4 In. on 4 In. #53 Compacted Agg.

- (CR) Curb Ramp, Concrete
- (13) Concrete Curb
- (15) Concrete Curb and Gutter, Modified
- (P) Patch, 165 #/syd HMA Surface, 3, 58H, 9.5 mm (Mod) on PCCP, 9 In.
- TS Turning Space, 1.50% Ea. Way Desirable, 2.00% Max.

- (42) Remove Pavement & Agg. Base, Backfill with B-Borrow & 4" Topsoil, Mulch Seed
- (C) PCCP, 12 In., Colored Red on 6 In. #53 Compacted Agg. on
- (W) Wedge & Level, Type B



RECOMMENDED FOR APPROVAL <i>Pat R. Dierkes</i> ENGINEER 04/15/2025 DATE	
DESIGNED: PRD	DRAWN: PRD
CHECKED: NK	CHECKED:

CITY OF BLOOMINGTON
ENGINEERING DEPARTMENT

NORTH WALNUT STREET RESURFACING
PLAN VIEW
STA 16+00 to STA 28+00 LINE "PR-W"

HORIZONTAL SCALE 1" = 20'	BRIDGE FILE N/A
VERTICLE SCALE N/A	DESIGNATION N/A
SURVEY BOOK N/A	SHEETS 2 of 20
CONTRACT N/A	PROJECT NORTH WALNUT RESURFACING



Notes:
Variable milling depths are based upon road cores to ensure existing HMA is removed to the existing PCCP road. Milling depths shall be adjusted to ensure PCCP road is exposed and scarified. HMA resurfacing shall be 1-1/2" for the entire project, except in areas indicated for wedge and level to matching existing approaches.



(K) Full Depth HMA Pavement
165 #/syd HMA Surface, 3, 58H, 9.5 mm (Mod) on
220 #/syd HMA Intermediate, 3, 58H, 19.0 mm (Mod) on
330 #/syd HMA Base, 3, 58S, 25.0 mm (Mod) on
6 In. #53 Compacted Agg.

(M)	Milling, Asphalt, 1-1/2 in.	(CR)	Curb Ramp, Concrete	(42)	Remove Pavement & Agg. Base, Backfill with B-Borrow & 4" Topsoil, Mulch Seed
(M1)	Milling, Asphalt, 2 in.	(13)	Concrete Curb	(C)	PCCP, 12 In., Colored Red on 6 In. #53 Compacted Agg. on
(M2)	Milling, Asphalt, 2-1/2 in.	(15)	Concrete Curb and Gutter, Modified	(W)	Wedge & Level, Type B
(R)	165 #/syd HMA Surface, 3, 58H, 9.5 mm (Mod)	(P)	Patch, 165 #/syd HMA Surface, 3, 58H, 9.5 mm (Mod) on PCCP, 9 In.		
(F)	Sidewalk, Concrete, 4 In. on 4 In. #53 Compacted Agg.	TS	Turning Space, 1.50% Ea. Way Desirable, 2.00% Max.		



RECOMMENDED FOR APPROVAL	<i>Pat R. Dierkes</i>	04/15/2025
	ENGINEER	DATE
DESIGNED: PRD	DRAWN: PRD	
CHECKED: NK	CHECKED:	

CITY OF BLOOMINGTON
ENGINEERING DEPARTMENT

NORTH WALNUT STREET RESURFACING
PLAN VIEW
STA 28+00 to STA 40+00 LINE "PR-W"

HORIZONTAL SCALE	BRIDGE FILE
1" = 20'	N/A
VERTICLE SCALE	DESIGNATION
N/A	N/A
SURVEY BOOK	SHEETS
N/A	3 of 20
CONTRACT	PROJECT
N/A	NORTH WALNUT RESURFACING

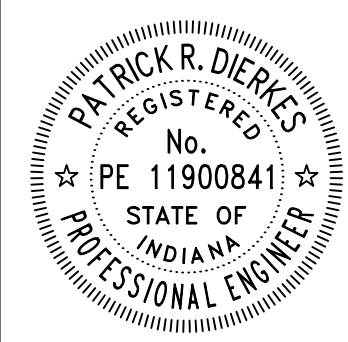


Notes:
Variable milling depths are based upon road cores to ensure existing HMA is removed to the existing PCCP road. Milling depths shall be adjusted to ensure PCCP road is exposed and scarified. HMA resurfacing shall be 1-1/2" for the entire project, except in areas indicated for wedge and level to matching existing approaches.



(K) Full Depth HMA Pavement
165 #/syd HMA Surface, 3, 58H, 9.5 mm (Mod) on
220 #/syd HMA Intermediate, 3, 58H, 19.0 mm (Mod) on
330 #/syd HMA Base, 3, 58S, 25.0 mm (Mod) on
6 In. #53 Compacted Agg.

- | | | | | | |
|------|---|------|---|------|--|
| (M) | Milling, Asphalt, 1-1/2 in. | (CR) | Curb Ramp, Concrete | (42) | Remove Pavement & Agg. Base, Backfill with B-Borrow & 4" Topsoil, Mulch Seed |
| (M1) | Milling, Asphalt, 2 in. | (13) | Concrete Curb | (C) | PCCP, 12 In., Colored Red on 6 In. #53 Compacted Agg. on |
| (M2) | Milling, Asphalt, 2-1/2 in. | (15) | Concrete Curb and Gutter, Modified | (W) | Wedge & Level, Type B |
| (R) | 165 #/syd HMA Surface, 3, 58H, 9.5 mm (Mod) | (P) | Patch, 165 #/syd HMA Surface, 3, 58H, 9.5 mm (Mod) on PCCP, 9 In. | | |
| (F) | Sidewalk, Concrete, 4 In. on 4 In. #53 Compacted Agg. | TS | Turning Space, 1.50% Ea. Way Desirable, 2.00% Max. | | |

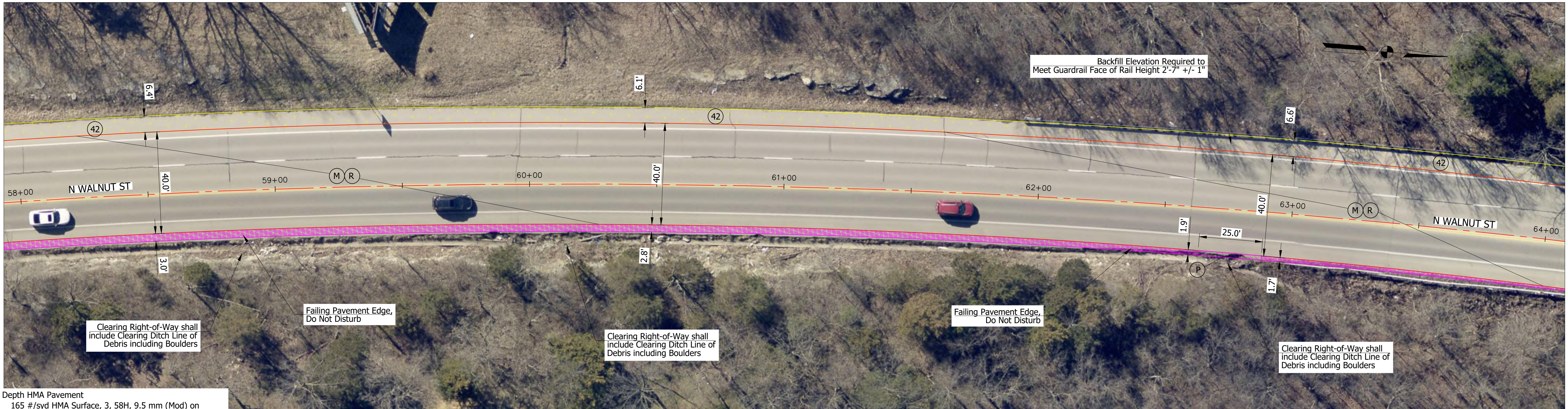
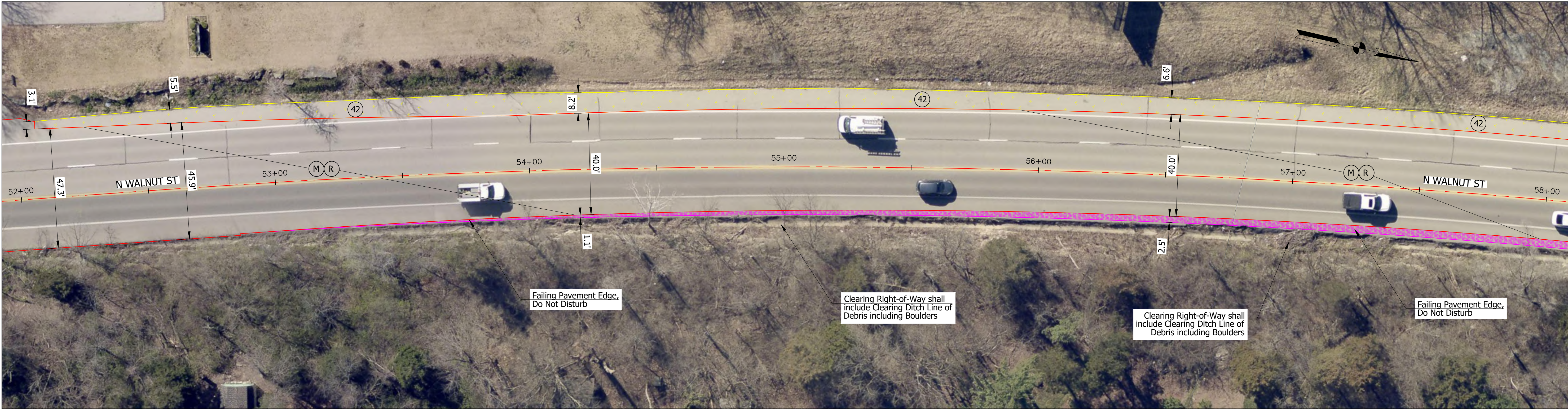


RECOMMENDED FOR APPROVAL <i>Pat R. Dierkes</i> 04/15/2025 ENGINEER DATE	
DESIGNED: PRD	DRAWN: PRD
CHECKED: NK	CHECKED:

**CITY OF BLOOMINGTON
ENGINEERING DEPARTMENT**

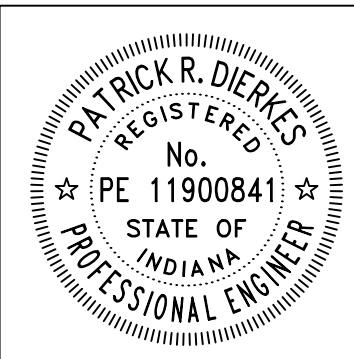
**NORTH WALNUT STREET RESURFACING
PLAN VIEW
STA 40+00 to STA 52+00 LINE "PR-W"**

HORIZONTAL SCALE 1" = 20'	BRIDGE FILE N/A
VERTICLE SCALE N/A	DESIGNATION N/A
SURVEY BOOK N/A	SHEETS 4 of 20
CONTRACT N/A	PROJECT NORTH WALNUT RESURFACING



(K) Full Depth HMA Pavement
165 #/syd HMA Surface, 3, 58H, 9.5 mm (Mod) on
220 #/syd HMA Intermediate, 3, 58H, 19.0 mm (Mod) on
330 #/syd HMA Base, 3, 58S, 25.0 mm (Mod) on
6 In. #53 Compacted Agg.

(M)	Milling, Asphalt, 1-1/2 in.	(CR)	Curb Ramp, Concrete	(42)	Remove Pavement & Agg. Base, Backfill with B-Borrow & 4" Topsoil, Mulch Seed
(M1)	Milling, Asphalt, 2 in.	(13)	Concrete Curb	(C)	PCCP, 12 In., Colored Red on 6 In. #53 Compacted Agg. on
(M2)	Milling, Asphalt, 2-1/2 in.	(15)	Concrete Curb and Gutter, Modified	(W)	Wedge & Level, Type B
(R)	165 #/syd HMA Surface, 3, 58H, 9.5 mm (Mod)	(P)	Patch, 165 #/syd HMA Surface, 3, 58H, 9.5 mm (Mod) on PCCP, 9 In.		
(F)	Sidewalk, Concrete, 4 In. on 4 In. #53 Compacted Agg.	TS	Turning Space, 1.50% Ea. Way Desirable, 2.00% Max.		



RECOMMENDED FOR APPROVAL	<i>Pat R. Dierkes</i>	04/15/2025
	ENGINEER	DATE
DESIGNED: PRD	DRAWN: PRD	
CHECKED: NK	CHECKED:	

CITY OF BLOOMINGTON
ENGINEERING DEPARTMENT

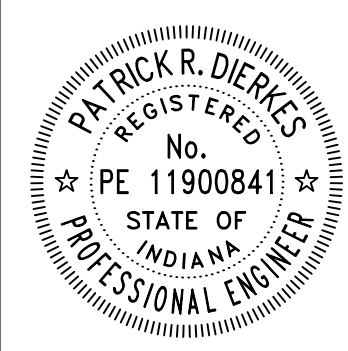
NORTH WALNUT STREET RESURFACING
PLAN VIEW
STA 52+00 to STA 64+00 LINE "PR-W"

HORIZONTAL SCALE 1" = 20'	BRIDGE FILE N/A
VERTICLE SCALE N/A	DESIGNATION N/A
SURVEY BOOK N/A	SHEETS 5 of 20
CONTRACT N/A	PROJECT NORTH WALNUT RESURFACING



(K) Full Depth HMA Pavement
165 #/syd HMA Surface, 3, 58H, 9.5 mm (Mod) on
220 #/syd HMA Intermediate, 3, 58H, 19.0 mm (Mod) on
330 #/syd HMA Base, 3, 58S, 25.0 mm (Mod) on
6 In. #53 Compacted Agg.

(M)	Milling, Asphalt, 1-1/2 in.	(CR)	Curb Ramp, Concrete	(42)	Remove Pavement & Agg. Base, Backfill with B-Borrow & 4" Topsoil, Mulch Seed
(M1)	Milling, Asphalt, 2 in.	(13)	Concrete Curb	(C)	PCCP, 12 In., Colored Red on 6 In. #53 Compacted Agg. on
(M2)	Milling, Asphalt, 2-1/2 in.	(15)	Concrete Curb and Gutter, Modified	(W)	Wedge & Level, Type B
(R)	165 #/syd HMA Surface, 3, 58H, 9.5 mm (Mod)	(P)	Patch, 165 #/syd HMA Surface, 3, 58H, 9.5 mm (Mod) on PCCP, 9 In.		
(F)	Sidewalk, Concrete, 4 In. on 4 In. #53 Compacted Agg.	TS	Turning Space, 1.50% Ea. Way Desirable, 2.00% Max.		

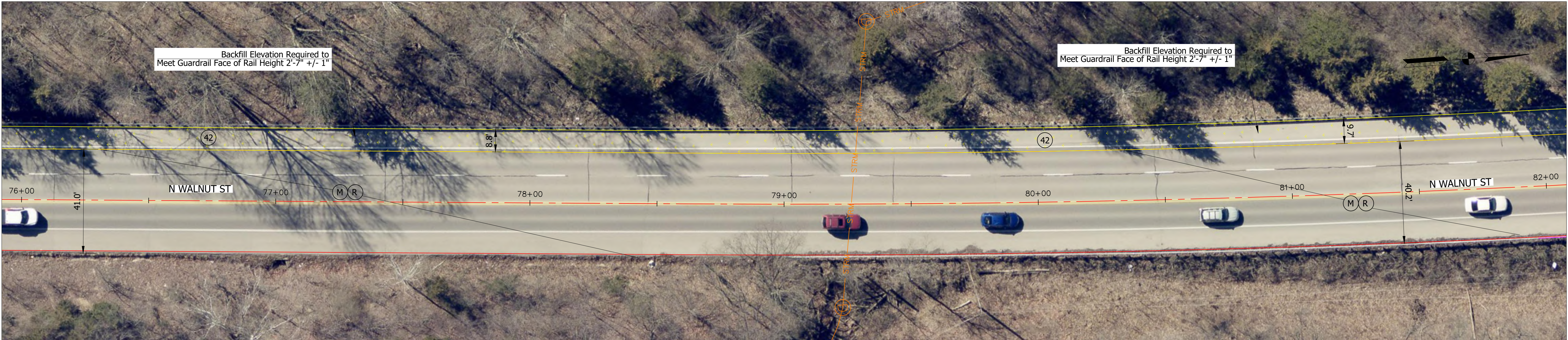


RECOMMENDED FOR APPROVAL	<i>Patrick R. Dierkes</i>	04/15/2025
ENGINEER	DATE	
DESIGNED: PRD	DRAWN: PRD	
CHECKED: NK	CHECKED:	

**CITY OF BLOOMINGTON
ENGINEERING DEPARTMENT**

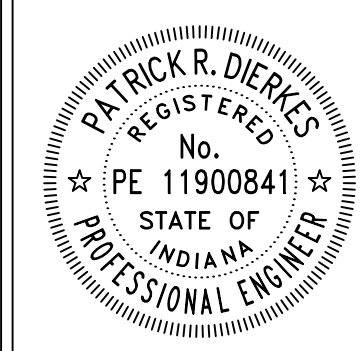
**NORTH WALNUT STREET RESURFACING
PLAN VIEW
STA 64+00 to STA 76+00 LINE "PR-W"**

HORIZONTAL SCALE	BRIDGE FILE
1" = 20'	N/A
VERTICLE SCALE	DESIGNATION
N/A	N/A
SURVEY BOOK	SHEETS
N/A	6 of 20
CONTRACT	PROJECT
N/A	NORTH WALNUT RESURFACING



(K) Full Depth HMA Pavement
165 #/syd HMA Surface, 3, 58H, 9.5 mm (Mod) on
220 #/syd HMA Intermediate, 3, 58H, 19.0 mm (Mod) on
330 #/syd HMA Base, 3, 58S, 25.0 mm (Mod) on
6 In. #53 Compacted Agg.

(M)	Milling, Asphalt, 1-1/2 in.	(CR)	Curb Ramp, Concrete	(42)	Remove Pavement & Agg. Base, Backfill with B-Borrow & 4" Topsoil, Mulch Seed
(M1)	Milling, Asphalt, 2 in.	(13)	Concrete Curb	(C)	PCCP, 12 In., Colored Red on 6 In. #53 Compacted Agg. on
(M2)	Milling, Asphalt, 2-1/2 in.	(15)	Concrete Curb and Gutter, Modified	(W)	Wedge & Level, Type B
(R)	165 #/syd HMA Surface, 3, 58H, 9.5 mm (Mod)	(P)	Patch, 165 #/syd HMA Surface, 3, 58H, 9.5 mm (Mod) on PCCP, 9 In.		
(F)	Sidewalk, Concrete, 4 In. on 4 In. #53 Compacted Agg.	TS	Turning Space, 1.50% Ea. Way Desirable, 2.00% Max.		



RECOMMENDED FOR APPROVAL	<i>Pat R. Dierkes</i>	04/15/2025
ENGINEER	DATE	
DESIGNED: PRD	DRAWN: PRD	
CHECKED: NK	CHECKED:	

CITY OF BLOOMINGTON
ENGINEERING DEPARTMENT

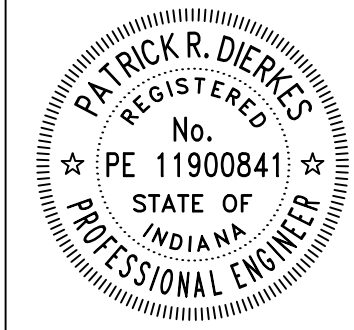
NORTH WALNUT STREET RESURFACING
PLAN VIEW
STA 76+00 to STA 88+00 LINE "PR-W"

HORIZONTAL SCALE	BRIDGE FILE
1" = 20'	N/A
VERTICLE SCALE	DESIGNATION
N/A	N/A
SURVEY BOOK	SHEETS
N/A	7 of 20
CONTRACT	PROJECT
N/A	NORTH WALNUT RESURFACING



- (K) Full Depth HMA Pavement
165 #/syd HMA Surface, 3, 58H, 9.5 mm (Mod) on
220 #/syd HMA Intermediate, 3, 58H, 19.0 mm (Mod) on
330 #/syd HMA Base, 3, 58S, 25.0 mm (Mod) on
6 In. #53 Compacted Agg.

(M)	Milling, Asphalt, 1-1/2 in.	(CR)	Curb Ramp, Concrete	(42)	Remove Pavement & Agg. Base, Backfill with B-Borrow & 4" Topsoil, Mulch Seed
(M1)	Milling, Asphalt, 2 in.	(13)	Concrete Curb	(C)	PCCP, 12 In., Colored Red on 6 In. #53 Compacted Agg. on
(M2)	Milling, Asphalt, 2-1/2 in.	(15)	Concrete Curb and Gutter, Modified	(W)	Wedge & Level, Type B
(R)	165 #/syd HMA Surface, 3, 58H, 9.5 mm (Mod)	(P)	Patch, 165 #/syd HMA Surface, 3, 58H, 9.5 mm (Mod) on PCCP, 9 In.		
(F)	Sidewalk, Concrete, 4 In. on 4 In. #53 Compacted Agg.	TS	Turning Space, 1.50% Ea. Way Desirable, 2.00% Max.		



RECOMMENDED FOR APPROVAL	<i>Patrick R. Dierkes</i>	04/15/2025
	ENGINEER	DATE
DESIGNED: PRD	DRAWN: PRD	
CHECKED: NK	CHECKED:	

CITY OF BLOOMINGTON
ENGINEERING DEPARTMENT

NORTH WALNUT STREET RESURFACING
PLAN VIEW
STA 88+00 to STA 94+00 LINE "PR-W"

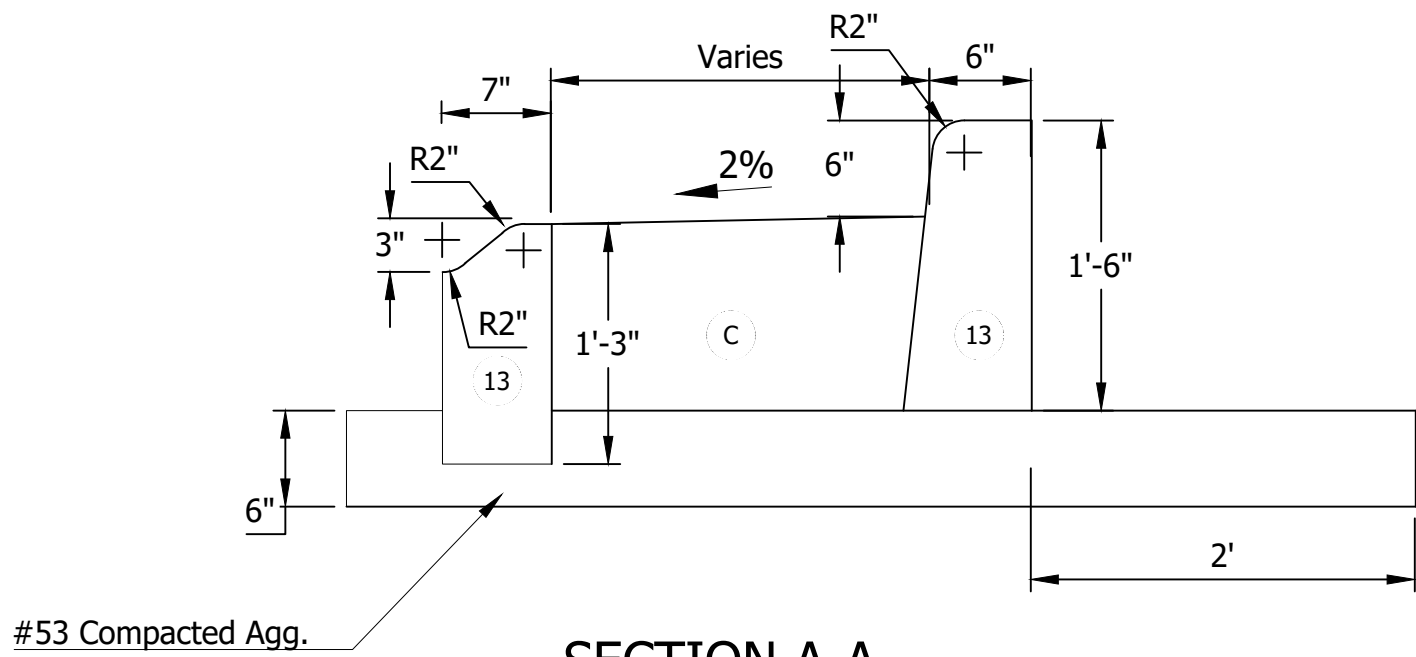
HORIZONTAL SCALE	BRIDGE FILE
1" = 20'	N/A
VERTICLE SCALE	DESIGNATION
N/A	N/A
SURVEY BOOK	SHEETS
N/A	8 of 20
CONTRACT	PROJECT
N/A	NORTH WALNUT RESURFACING



CURB RAMP DETAILS
EAST SIDE NORTH WALNUT STREET & OLD INDIANA 37
Scale: 1"=5'



CURB RAMP DETAILS
NORTHWEST CORNER NORTH WALNUT STREET & OLD INDIANA 37
Scale: 1"=5'



SECTION A-A
TRUCK APRON
Scale: 1"=1'

- Notes:
- Dimensions and layouts shown are considered the maximum required to meet PROWAG requirements. If additional removal/reconstruction is required the Contractor shall notify the Owner for approval.
 - Curb ramps shall slope to the roadway. Contractor shall set turning space elevations to ensure curb ramps slope to the roadway. Ponding at curb ramps shall be corrected at the Contractor's expense.
 - Curbs at curb ramps shall taper from 0" to 6" in the distance called out on the curb ramp details. Flare slopes in pedestrian circulation routes shall not exceed 10.0%. In non-pedestrian circulation routes flares shall not exceed 25.0%.
 - All exposed curb faces shall be finished. Back of curbs in grass areas, item "42", shall be finished as needed to achieve grass slopes of 6:1 max.
 - Pavement patching along curb face shall be considered incidental to the cost of curb construction. All patching required shall be full depth PCCP with 1-1/2" of asphalt surface.
 - Tree roots impacted during construction shall be sawcut flush.
 - All existing valves, manholes, vaults and other facilities shall be adjusted to grade as needed for construction. Contractor shall coordinate as needed with the appropriate utility.
 - Meters and sign posts impacted during construction shall be relocated/replaced. Contractor shall provide temporary signage as needed during construction.

PLOTTED: Tuesday, April 15, 2025 5:55:32 PM

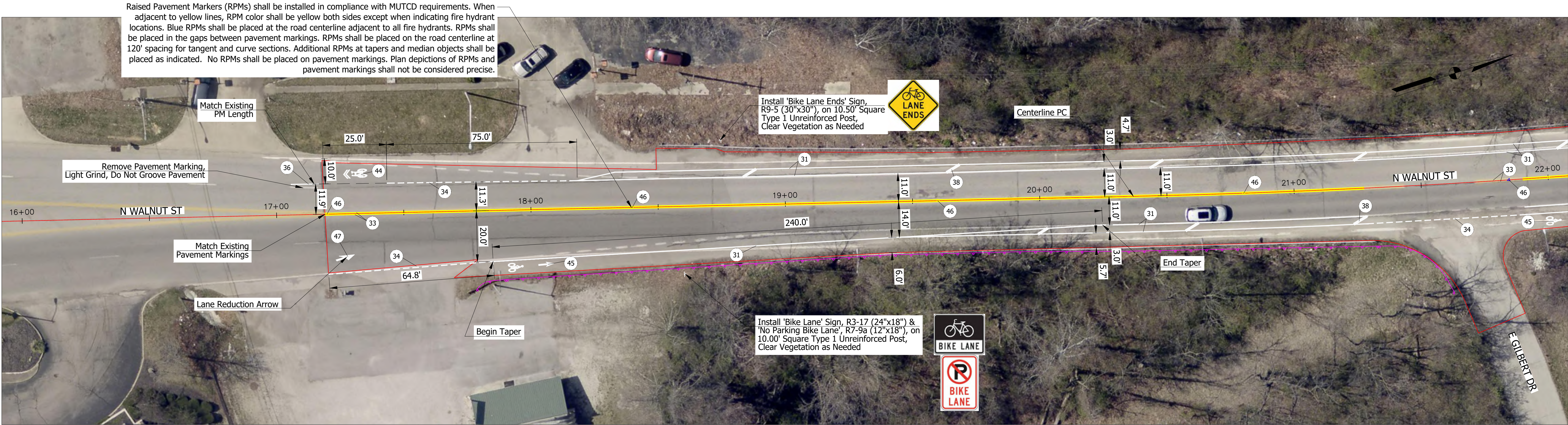
(M)	Milling, Asphalt, 1-1/2 in.	(CR)	Curb Ramp, Concrete	(42)	Remove Pavement & Agg. Base, Backfill with B-Borrow & 4" Topsoil, Mulch Seed
(M1)	Milling, Asphalt, 2 in.	(13)	Concrete Curb	(C)	PCCP, 12 In., Colored Red on 6 In. #53 Compacted Agg. on
(M2)	Milling, Asphalt, 2-1/2 in.	(15)	Concrete Curb and Gutter, Modified	(W)	Wedge & Level, Type B
(R)	165 #/syd HMA Surface, 3, 58H, 9.5 mm (Mod)	(P)	Patch, 165 #/syd HMA Surface, 3, 58H, 9.5 mm (Mod) on PCCP, 9 In.		
(F)	Sidewalk, Concrete, 4 In. on 4 In. #53 Compacted Agg.	TS	Turning Space, 1.50% Ea. Way Desirable, 2.00% Max.		



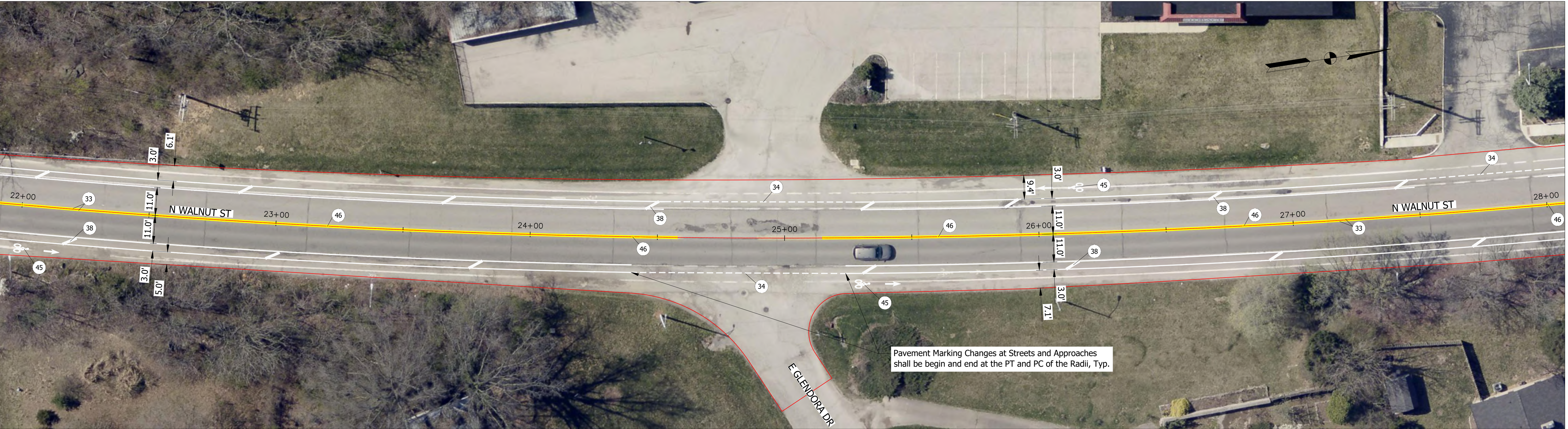
RECOMMENDED FOR APPROVAL	<i>Patrick R. Dierkes</i>	04/15/2025
ENGINEER	DATE	
DESIGNED: PRD	DRAWN: PRD	
CHECKED: NK	CHECKED:	

CITY OF BLOOMINGTON
ENGINEERING DEPARTMENT
NORTH WALNUT STREET RESURFACING
CURB RAMP DETAILS

HORIZONTAL SCALE	BRIDGE FILE
1" = 5'	N/A
VERTICLE SCALE	DESIGNATION
N/A	N/A
SURVEY BOOK	SHEETS
N/A	9 of 20
CONTRACT	PROJECT
N/A	NORTH WALNUT RESURFACING

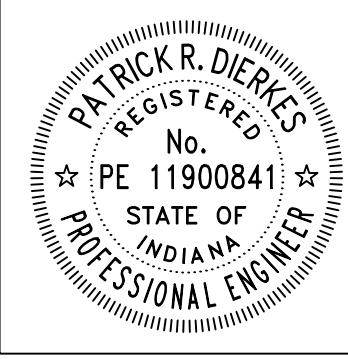


Notes:
Proposed road centerline to be centered on existing PCCP concrete roadbed.



PLOTTED: Wednesday, April 16, 2025 5:16:28 AM
FILE: N_WALNUT_PM_SHEET_01.DWG

30	Curb, Painting, Yellow	36	Line, Thermoplastic, Broken, White, 4 in. (7' Solid, 21' Gap)	41	Transverse Markings, Thermoplastic, Crosswalk Line, White, 24 in., Spacing as Dimensioned	46	Snowplowable Raised Pavement Marker
31	Line, Thermoplastic, Solid, White, 4 in.	37	Line, Thermoplastic, Broken, Yellow, 4 in. (7' Solid, 21' Gap)	42	Transverse Markings, Thermoplastic, Stop Line, 24 in.	47	Pavement Message Marking, Thermoplastic Lane Reduction Arrow
32	Line, Thermoplastic, Solid, White, 6 in.	38	Transverse Marking, Thermoplastic, Crosshatch Line, White, 12 in. (45 Deg. Angle, 80' Spacing)	43	Pavement Message Marking, Thermoplastic Lane Indication Arrow		
33	Line, Thermoplastic, Solid, Yellow, 4 in.	39	Transverse Marking, Thermoplastic, Crosshatch Line, Yellow, 12 in. (45 Deg. Angle)	44	Pavement Message Marking, Thermoplastic, White, Shared Lane		
34	Line, Thermoplastic, Dotted, White, 4 in. (2' Solid, 4' Gap)	40	Transverse Marking, Thermoplastic, Crosswalk Line, White, 6 in.	45	Pavement Message Marking, Thermoplastic, Bicycle Lane Marking		
35	Line, Thermoplastic, Dotted, Yellow, 4 in. (2' Solid, 4' Gap)						

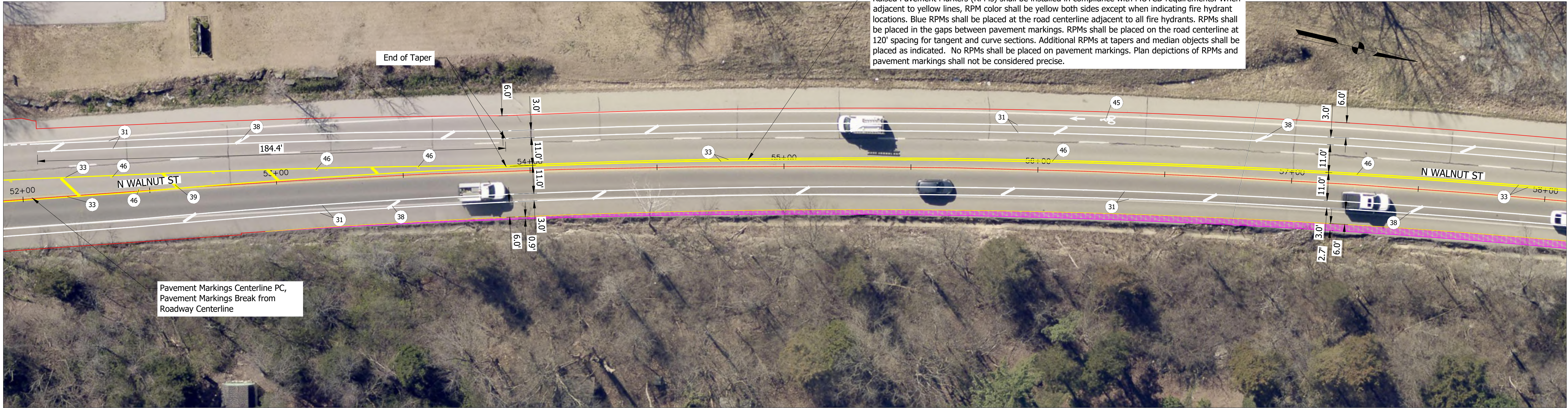


RECOMMENDED FOR APPROVAL	<i>Patrick R. Dierkes</i>	04/15/2025
ENGINEER	DATE	
DESIGNED: PRD	DRAWN: PRD	
CHECKED: NK	CHECKED:	

**CITY OF BLOOMINGTON
ENGINEERING DEPARTMENT**

**NORTH WALNUT STREET RESURFACING
PLAN VIEW
STA 16+00 to STA 28+00 LINE "PR-W"**

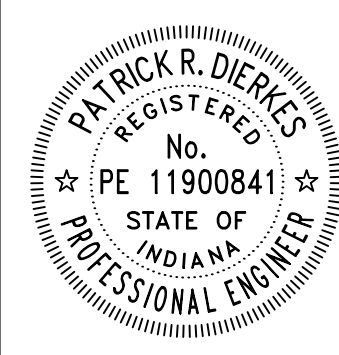
HORIZONTAL SCALE	BRIDGE FILE
1" = 20'	N/A
VERTICLE SCALE	DESIGNATION
N/A	N/A
SURVEY BOOK	SHEETS
N/A	10 of 20
CONTRACT	PROJECT
N/A	NORTH WALNUT RESURFACING



PLOTTED: Wednesday, April 16, 2025 4:46:11 PM

FILE: N_WALNUT_PM_SHEET_04.DWG

- | | | | | | | | |
|----|---|----|--|----|---|----|-------------------------------------|
| 30 | Curb, Painting, Yellow | 36 | Line, Thermoplastic, Broken, White, 4 in. (7' Solid, 21' Gap) | 41 | Transverse Markings, Thermoplastic, Crosswalk Line, White, 24 in., Spacing as Dimensioned | 46 | Snowplowable Raised Pavement Marker |
| 31 | Line, Thermoplastic, Solid, White, 4 in. | 37 | Line, Thermoplastic, Broken, Yellow, 4 in. (7' Solid, 21' Gap) | 42 | Transverse Markings, Thermoplastic, Stop Line, 24 in. | | |
| 32 | Line, Thermoplastic, Solid, White, 6 in. | 38 | Transverse Marking, Thermoplastic, Crosshatch Line, White, 12 in. (45 Deg. Angle, 80' Spacing) | 43 | Pavement Message Marking, Thermoplastic Lane Indication Arrow | | |
| 33 | Line, Thermoplastic, Solid, Yellow, 4 in. | 39 | Transverse Marking, Thermoplastic, Crosshatch Line, Yellow, 12 in. (45 Deg. Angle) | 44 | Pavement Message Marking, Thermoplastic, White, Shared Lane | | |
| 34 | Line, Thermoplastic, Dotted, White, 4 in. (2' Solid, 4' Gap) | 40 | Transverse Marking, Thermoplastic, Crosswalk Line, White, 6 in. | 45 | Pavement Message Marking, Thermoplastic, Bicycle Lane Marking | | |
| 35 | Line, Thermoplastic, Dotted, Yellow, 4 in. (2' Solid, 4' Gap) | | | | | | |

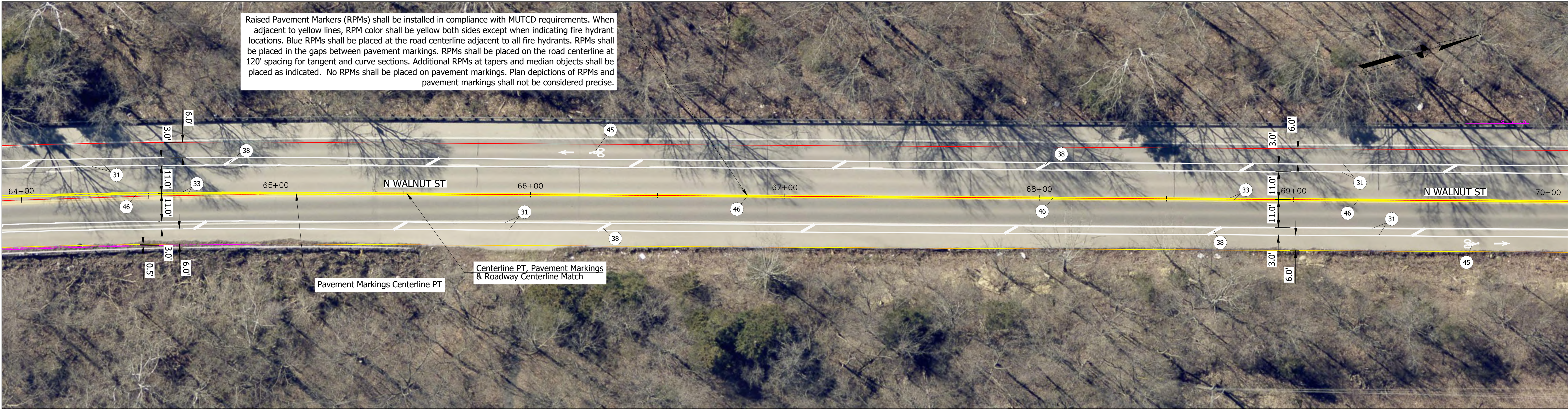


RECOMMENDED FOR APPROVAL <i>Pat R. Dierkes</i> ENGINEER 04/15/2025 DATE	
DESIGNED: PRD	DRAWN: PRD
CHECKED: NK	CHECKED:

**CITY OF BLOOMINGTON
ENGINEERING DEPARTMENT**

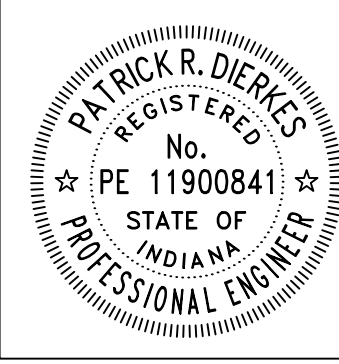
**NORTH WALNUT STREET RESURFACING
PLAN VIEW
STA 52+00 to STA 64+00 LINE "PR-W"**

HORIZONTAL SCALE 1" = 20'	BRIDGE FILE N/A
VERTICLE SCALE N/A	DESIGNATION N/A
SURVEY BOOK N/A	SHEETS 13 of 20
CONTRACT N/A	PROJECT NORTH WALNUT RESURFACING



PLOTTED: Wednesday, April 16, 2025 6:27:53 AM
FILE: N_WALNUT_PM_SHEET_05.DWG

30	Curb, Painting, Yellow	36	Line, Thermoplastic, Broken, White, 4 in. (7' Solid, 21' Gap)	41	Transverse Markings, Thermoplastic, Crosswalk Line, White, 24 in., Spacing as Dimensioned	46	Snowplowable Raised Pavement Marker
31	Line, Thermoplastic, Solid, White, 4 in.	37	Line, Thermoplastic, Broken, Yellow, 4 in. (7' Solid, 21' Gap)	42	Transverse Markings, Thermoplastic, Stop Line, 24 in.		
32	Line, Thermoplastic, Solid, White, 6 in.	38	Transverse Marking, Thermoplastic, Crosshatch Line, White, 12 in. (45 Deg. Angle, 80' Spacing)	43	Pavement Message Marking, Thermoplastic Lane Indication Arrow		
33	Line, Thermoplastic, Solid, Yellow, 4 in.	39	Transverse Marking, Thermoplastic, Crosshatch Line, Yellow, 12 in. (45 Deg. Angle)	44	Pavement Message Marking, Thermoplastic, White, Shared Lane		
34	Line, Thermoplastic, Dotted, White, 4 in. (2' Solid, 4' Gap)	40	Transverse Marking, Thermoplastic, Crosswalk Line, White, 6 in.	45	Pavement Message Marking, Thermoplastic, Bicycle Lane Marking		
35	Line, Thermoplastic, Dotted, Yellow, 4 in. (2' Solid, 4' Gap)						



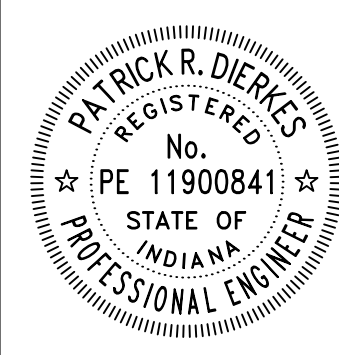
RECOMMENDED FOR APPROVAL	<i>Pat R. Dierkes</i>	04/15/2025
ENGINEER	DATE	
DESIGNED: PRD	DRAWN: PRD	
CHECKED: NK	CHECKED:	

CITY OF BLOOMINGTON ENGINEERING DEPARTMENT
NORTH WALNUT STREET RESURFACING PLAN VIEW STA 64+00 to STA 76+00 LINE "PR-W"

HORIZONTAL SCALE 1" = 20'	BRIDGE FILE N/A
VERTICLE SCALE N/A	DESIGNATION N/A
SURVEY BOOK N/A	SHEETS 14 of 20
CONTRACT N/A	PROJECT NORTH WALNUT RESURFACING



30	Curb, Painting, Yellow	36	Line, Thermoplastic, Broken, White, 4 in. (7' Solid, 21' Gap)	41	Transverse Markings, Thermoplastic, Crosswalk Line, White, 24 in., Spacing as Dimensioned	46	Snowplowable Raised Pavement Marker
31	Line, Thermoplastic, Solid, White, 4 in.	37	Line, Thermoplastic, Broken, Yellow, 4 in. (7' Solid, 21' Gap)	42	Transverse Markings, Thermoplastic, Stop Line, 24 in.		
32	Line, Thermoplastic, Solid, White, 6 in.	38	Transverse Marking, Thermoplastic, Crosshatch Line, White, 12 in., (45 Deg. Angle, 80' Spacing)	43	Pavement Message Marking, Thermoplastic Lane Indication Arrow		
33	Line, Thermoplastic, Solid, Yellow, 4 in.	39	Transverse Marking, Thermoplastic, Crosshatch Line, Yellow, 12 in., (45 Deg. Angle)	44	Pavement Message Marking, Thermoplastic, White, Shared Lane		
34	Line, Thermoplastic, Dotted, White, 4 in. (2' Solid, 4' Gap)	40	Transverse Marking, Thermoplastic, Crosswalk Line, White, 6 in.	45	Pavement Message Marking, Thermoplastic, Bicycle Lane Marking		
35	Line, Thermoplastic, Dotted, Yellow, 4 in. (2' Solid, 4' Gap)						



RECOMMENDED FOR APPROVAL	<i>Patrick R. Dierkes</i>	04/15/2025
ENGINEER	DATE	
DESIGNED: PRD	DRAWN: PRD	
CHECKED: NK	CHECKED:	

CITY OF BLOOMINGTON
ENGINEERING DEPARTMENT

NORTH WALNUT STREET RESURFACING
PLAN VIEW
STA 76+00 to STA 88+00 LINE "PR-W"

HORIZONTAL SCALE	BRIDGE FILE
1" = 20'	N/A
VERTICLE SCALE	DESIGNATION
N/A	N/A
SURVEY BOOK	SHEETS
N/A	15 of 20
CONTRACT	PROJECT
N/A	NORTH WALNUT RESURFACING

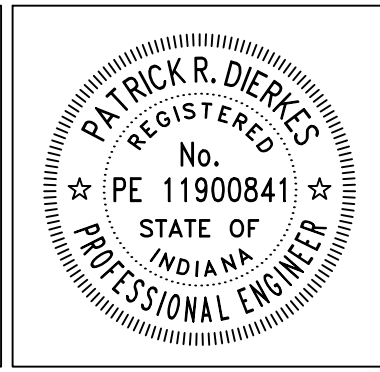
PLOTTED: Wednesday, April 16, 2025 7:01:24 AM
 FILE: N_WALNUT_PM_SHEET_07.DWG


- 30 Curb, Painting, Yellow
- 31 Line, Thermoplastic, Solid, White, 4 in.
- 32 Line, Thermoplastic, Solid, White, 6 in.
- 33 Line, Thermoplastic, Solid, Yellow, 4 in.
- 34 Line, Thermoplastic, Dotted, White, 4 in. (2' Solid, 4' Gap)
- 35 Line, Thermoplastic, Dotted, Yellow, 4 in. (2' Solid, 4' Gap)

- 36 Line, Thermoplastic, Broken, White, 4 in. (7' Solid, 21' Gap)
- 37 Line, Thermoplastic, Broken, Yellow, 4 in. (7' Solid, 21' Gap)
- 38 Transverse Marking, Thermoplastic, Crosshatch Line, White, 12 in. (45 Deg. Angle, 80' Spacing)
- 39 Transverse Marking, Thermoplastic, Crosshatch Line, Yellow, 12 in. (45 Deg. Angle)
- 40 Transverse Marking, Thermoplastic, Crosswalk Line, White, 6 in.

- 41 Transverse Markings, Thermoplastic, Crosswalk Line, White, 24 in., Spacing as Dimensioned
- 42 Transverse Markings, Thermoplastic, Stop Line, 24 in.
- 43 Pavement Message Marking, Thermoplastic Lane Indication Arrow
- 44 Pavement Message Marking, Thermoplastic, White, Shared Lane
- 45 Pavement Message Marking, Thermoplastic, Bicycle Lane Marking

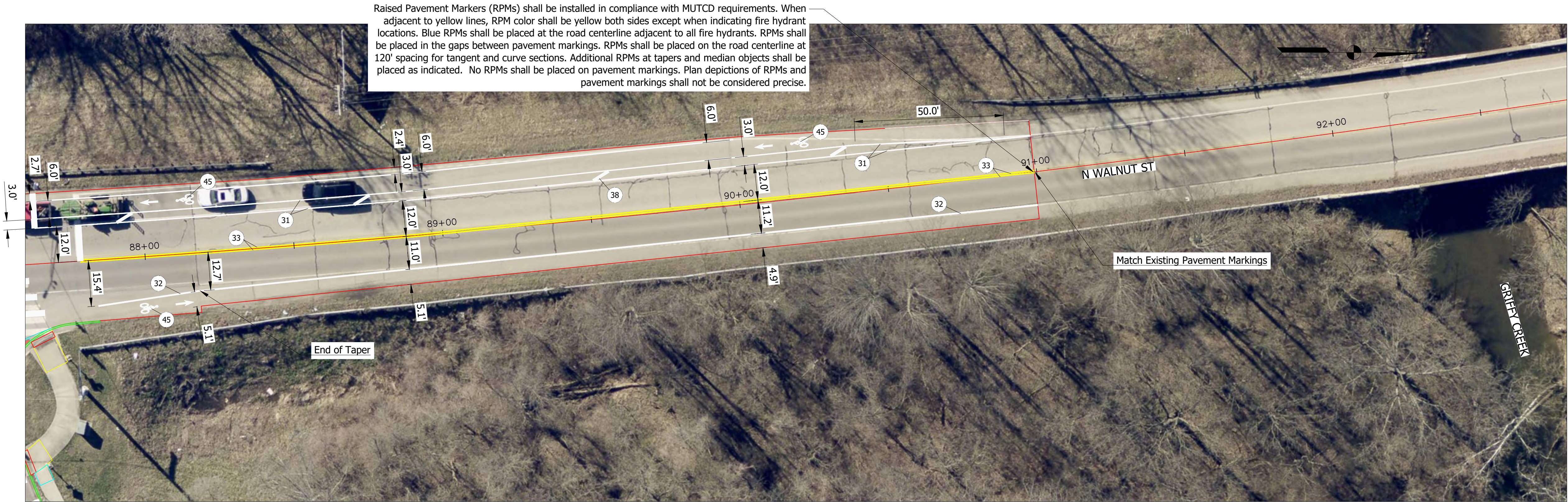
- 46 Snowplowable Raised Pavement Marker

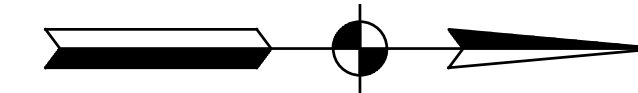


RECOMMENDED FOR APPROVAL 		04/15/2025
ENGINEER		DATE
DESIGNED: PRD	DRAWN: PRD	
CHECKED: NK	CHECKED:	

CITY OF BLOOMINGTON ENGINEERING DEPARTMENT	
NORTH WALNUT STREET RESURFACING PLAN VIEW STA 88+00 to STA 94+00 LINE "PR-W"	

HORIZONTAL SCALE 1" = 20'	BRIDGE FILE N/A
VERTICLE SCALE N/A	DESIGNATION N/A
SURVEY BOOK N/A	SHEETS 16 of 20
CONTRACT N/A	PROJECT NORTH WALNUT RESURFACING





CITY OF BLOOMINGTON
BOARD OF PARKS COMMISSIONERS

SEC. 21, T9N, R1W
BLOOMINGTON TWP.
MONROE COUNTY

North Walnut Street

REMOVE 62.50 LFT EXISTING GUARDRAIL
INSTALL 112.50 LFT MGS GUARDRAIL
WITH LONG POST

INSTALL GUARDRAIL END TREATMENT, TYPE OS

REMOVE GUARDRAIL END TREATMENT

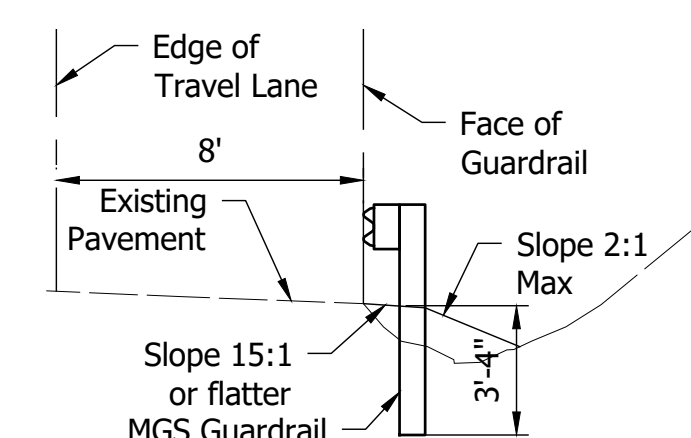
INV. 24 IN. X 36 IN. CULVERT = 634.50

INSTALL MGS GUARDRAIL CABLE TERMINAL ANCHOR
-N.E. CORNER OF WINGWALL BURIED

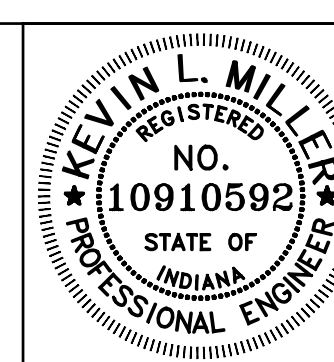
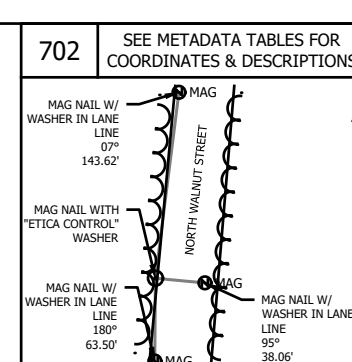
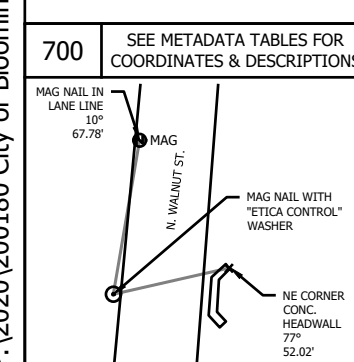
App. Exist. PL & R/W

WEISKOPF, BARBARA N
REVOCABLE TRUST

ANDREWS, JAMES R.
& PATRICIA H.



GUARDRAIL TYPICAL
Section A-A
Scale: 1" = 5'



RECOMMENDED FOR APPROVAL *Kevin L. Miller* DESIGN ENGINEER DATE 01/07/22

DESIGNED: JRE DRAWN: JRE

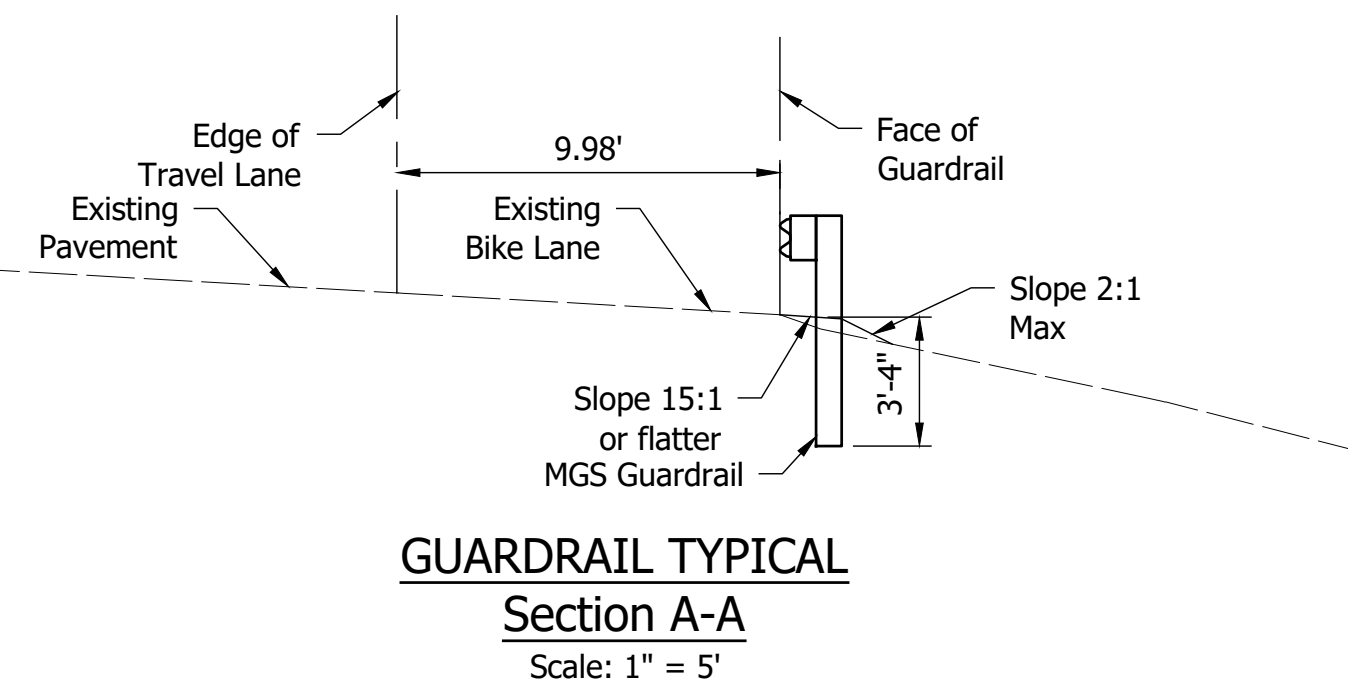
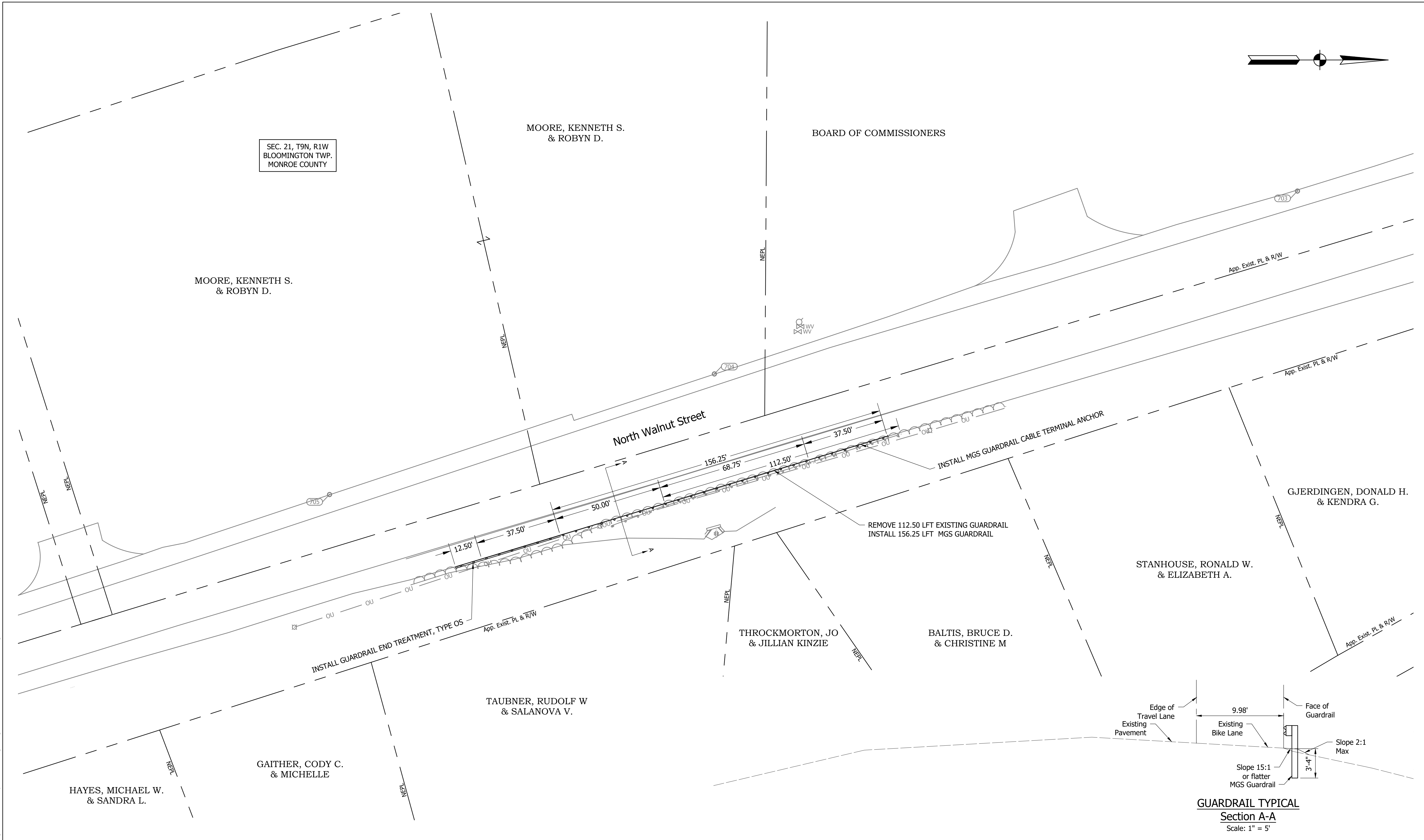
CHECKED: KLM CHECKED: AJS

INDIANA DEPARTMENT
OF TRANSPORTATION

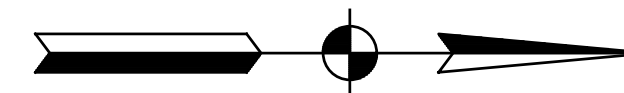
CONSTRUCTION DETAILS
SITE 6

SCALE	BRIDGE FILE
1" = 10'	N.A.
VERT. SCALE	DESIGNATION
N.A.	1900404
SURVEY BOOK	SHEETS
N.A.	10 of 15
CONTRACT	PROJECT
R-41897	1900404

P:\2020\200180 City of Bloomington Guardrail Improvement\Eng Design\Plans\Sheets\20-180 Plan 07.dwg 07 & 20 Andrew Stein 1/10/2022 12:57 PM



<div>703</div> <div>SEE METADATA TABLES FOR COORDINATES & DESCRIPTIONS</div> <div></div>	<div>704</div> <div>SEE METADATA TABLES FOR COORDINATES & DESCRIPTIONS</div> <div></div>	<div>705</div> <div>SEE METADATA TABLES FOR COORDINATES & DESCRIPTIONS</div> <div></div>	<div></div>	<div>RECOMMENDED FOR APPROVAL</div> <div></div> <div>DESIGN ENGINEER</div> <div>01/07/22</div> <div>DATE</div>	<div>INDIANA DEPARTMENT OF TRANSPORTATION</div>	<div>SCALE</div> <div>BRIDGE FILE</div> <div>1" = 20'</div> <div>N.A.</div> <div>VERT. SCALE</div> <div>DESIGNATION</div> <div>N.A.</div> <div>1900404</div>
<div>DESIGNED: JRE</div> <div>DRAWN: JRE</div> <div>CHECKED: KLM</div> <div>CHECKED: AJS</div>					<div>CONSTRUCTION DETAILS</div> <div>SITE 7</div>	<div>SURVEY BOOK</div> <div>SHEETS</div> <div>N.A.</div> <div>11 of 15</div> <div>CONTRACT</div> <div>PROJECT</div> <div>R-41897</div> <div>1900404</div>



SEC. 28, T9N, R1W
BLOOMINGTON TWP.
MONROE COUNTY

SAEEDI, GUL M.
& ZAKIRA

BLOOMINGTON,
CITY OF

AMERICAN STORAGE
LLC

GLADSON,
JEFFREY L.

INSTALL CURVED W-BEAM GUARDRAIL
TERMINAL SYSTEM, TYPE 1

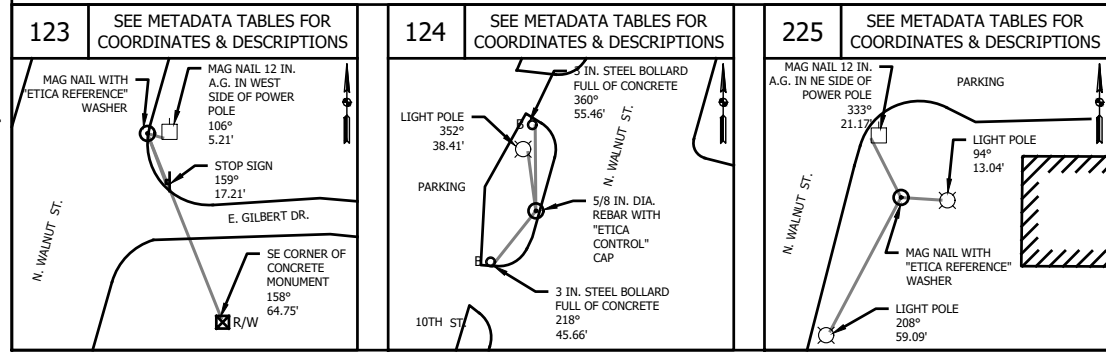
PAY LIMIT OF CURVED TERMINAL SYSTEM

REMOVE 356.25 LFT EXISTING GUARDRAIL &
INSTALL 343.75 LFT MGS GUARDRAIL

INSTALL CURVED W-BEAM GUARDRAIL
TERMINAL SYSTEM, TYPE 9

GUARDRAIL TYPICAL
Section A-A
Scale: 1" = 5'

GUARDRAIL TYPICAL
Section B-B
Scale: 1" = 5'



RECOMMENDED FOR APPROVAL	<i>Kevin L. Miller</i>	DESIGN ENGINEER	01/07/22	DATE
DESIGNED: JRE	DRAWN: JRE			
CHECKED: KLM	CHECKED: AJS			

INDIANA DEPARTMENT
OF TRANSPORTATION

CONSTRUCTION DETAILS
SITE 14

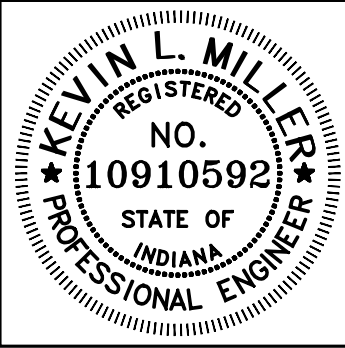
SCALE	BRIDGE FILE
1" = 20'	N.A.
VERT. SCALE	DESIGNATION
N.A.	1900404
SURVEY BOOK	SHEETS
N.A.	13 of 15
CONTRACT	PROJECT
R-41897	1900404

P:\2020\200180 City of Bloomington Guardrail Improvement\Eng Design\Plans\Sheets\20-180 Plan 14.dwg 14 Andrew Stein 1/10/2022 1:00 PM

P:\2020\200180 City of Bloomington Guardrail Improvement\Eng Design\Plans\Sheets\20-180 Tables.dwg GRT 01 Andrew Stein 1/10/2022 1:01 PM

GUARDRAIL SUMMARY TABLE																																	
LOCATION					MGS W-BEAM GUARDRAIL LENGTH														CURVED W-BEAM GUARDRAIL SYSTEM														
SITE NUMBER	STREET NAME	SIDE OF STREET			STANDARD POST AT 6 FT 3 IN. SPA.	LONG POST (10') AT 6 FT 3 IN. SPA.		STANDARD POST SHOP CURVED AT 6 FT 3 IN. SPA	LONG POST (10') SHOP CURVED AT 6 FT 3 IN. SPA		MGS GUARDRAIL SIDE-MOUNTED POST, DECK		STANDARD POST AT 3 FT 1.5 IN. SPA.	DOUBLE FACED AT 6 FT 3 IN. SPA.	DOUBLE FACED AT 3 FT 1.5 IN. SPA.	GUARDRAIL FLARE RATE		MGS GUARDRAIL TRANSITION TYPE TGB, NO CURB	GUARDRAIL TRANSITION TYPE ____		GUARDRAIL END TREATMENT TYPE OS	MGS GUARDRAIL CABLE TERMINAL ANCHOR		TERMINAL SYSTEM		CONNECTOR SYSTEM		GUARDRAIL REMOVE	GUARDRAIL RESET	IMPACT ATTENUATOR TYPE ____	IMPACT ATTENUATOR TYPE ____	REMARKS	
		NORTH	SOUTH	WEST																				EAST	TYPE	EACH	TYPE						EACH
1	DUNN			X	110.75																			1	1			12.5					
2	HEADLEY			X	62.5	1568.75		87.5			16										1	1					1518.75						
6	WALNUT			X		112.5															1	1					62.5						
7	WALNUT			X	156.25																1	1					112.5						
12	WILLIS			X	56.25																			2	1	1	1	50					
12	WILLIS			X	143.75																			2	1			162.5				USE DOUBLE BLOCKOUTS	
12	WILLIS			X																				1	1								
14	WALNUT			X	343.75																			1	1			356.25					
14	WALNUT			X																				9	1								
TOTALS					500	112.5		87.5	0		16						0				2	2			2		1	531.25					

Markups to this summary page were done to edit summary totals only. Original design quantities, per their respective sites, by the stamping engineering were not changed. Markups were performed by Patrick Dierkes, PE on 04/15/2025



RECOMMENDED FOR APPROVAL	<i>Kevin L. Miller</i>	01/07/22
	DESIGN ENGINEER	DATE
DESIGNED: JRE	DRAWN: JRE	
CHECKED: KLM	CHECKED: AJS	

INDIANA DEPARTMENT OF TRANSPORTATION
GUARDRAIL TABLE

SCALE	BRIDGE FILE
1" = 20'	N.A.
VERT. SCALE	DESIGNATION
N.A.	1900404
SURVEY BOOK	SHEETS
N.A.	14 of 15
CONTRACT	PROJECT
R-41897	1900404