

Collisions by injury severity (mapped/actual)

- ▲ Fatal (11/11)
- Incapacitating injury (169/209)

Collisions by month, 2021

Month	Collisions				% of total		
	Total	Speed-related	Alcohol-impaired	Motorcycle	Speed-related	Alcohol-impaired	Motorcycle
January	250	56	10	1	22.4%	4.0%	0.4%
February	252	52	3	0	20.6%	1.2%	0.0%
March	238	15	8	1	6.3%	3.4%	0.4%
April	267	23	4	6	8.6%	1.5%	2.2%
May	260	29	3	3	11.2%	1.2%	1.2%
June	262	37	6	2	14.1%	2.3%	0.8%
July	286	26	2	9	9.1%	0.7%	3.1%
August	333	40	7	12	12.0%	2.1%	3.6%
September	404	33	4	6	8.2%	1.0%	1.5%
October	420	45	5	11	10.7%	1.2%	2.6%
November	349	21	2	3	6.0%	0.6%	0.9%
December	322	29	2	5	9.0%	0.6%	1.6%
Total	3,643	406	56	59	11.1%	1.5%	1.6%

Collisions by municipality, 2021

Municipality	Collisions				% of total		
	Total	Speed-related	Alcohol-impaired	Motorcycle	Speed-related	Alcohol-impaired	Motorcycle
Bloomington	2,409	203	24	28	8.4%	1.0%	1.2%
Ellettsville	159	8	0	2	5.0%	0.0%	1.3%
Stinesville	0	0	0	0	N/A	N/A	N/A
Rural	1,048	193	32	29	18.4%	3.1%	2.8%
Unknown	27	2	0	0	7.4%	0.0%	0.0%
Total	3,643	406	56	59	11.1%	1.5%	1.6%

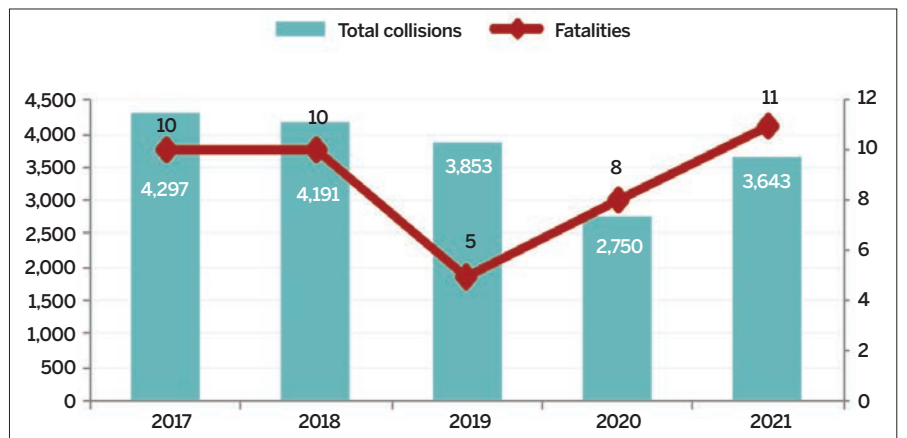
County collisions overview, 2017–21

	2017	2018	2019	2020	2021
Total collisions	4,297	4,191	3,853	2,750	3,643
Fatalities	10	10	5	8	11
Motorcycle collisions	67	81	54	45	59
Speed-related collisions	399	464	402	290	406
Alcohol-impaired collisions	76	60	64	47	56
Overall restraint use	79.6%	82.1%	81.4%	82.4%	86.1%

Driver statistics, 2021

Age group	Licensed drivers	Drivers in crashes	Per 10K licensed
15–20	5,166	1,019	1,972.5
21–24	6,088	863	1,417.5
25–44	29,718	1,830	615.8
45–64	24,179	1,239	512.4
65+	17,614	558	316.8
Total	82,765	5,509	665.6

Total collisions and fatalities, 2017–21





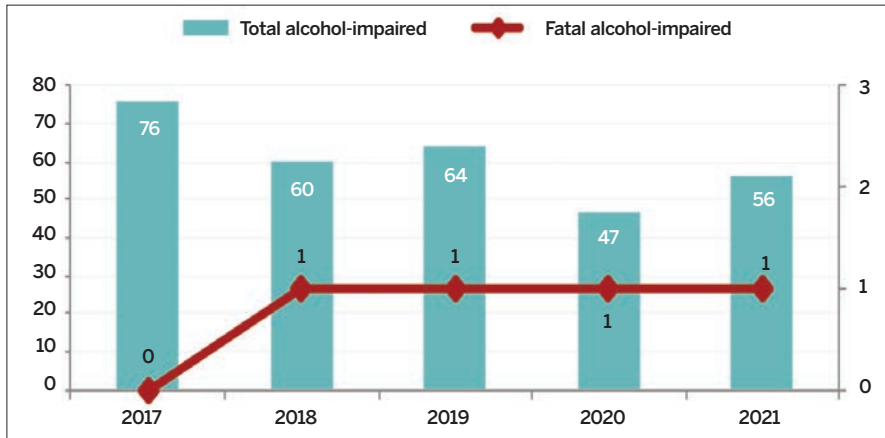
Individuals in collisions, 2021

Person type	Total	Fatal injuries	Nonfatal injuries
Driver	5,564	11	654
Occupant	193	0	183
Pedalcyclist	25	0	20
Pedestrian	41	0	35
Animal-drawn vehicle operator	0	0	0
Total	5,823	11	892

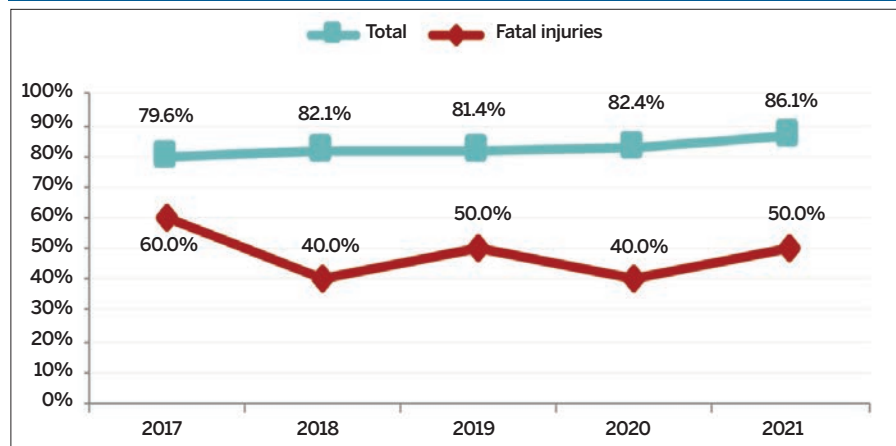
Impaired drivers in collisions, by age, 2021

Age group	Total drivers in collisions	Impaired drivers	% impaired
15-20	1,019	3	0.3%
21-24	863	5	0.6%
25-44	1,830	12	0.7%
45-64	1,239	7	0.6%
65+	558	0	0.0%
Total	5,509	27	0.5%

Alcohol-impaired collisions, 2017-21



Percentage restrained in collisions, 2017-21



Percentage of passenger vehicle drivers and passengers involved in collisions who were not wearing a seatbelt, by vehicle type, 2021

